



Legionella (Legionnaires' Disease and Pontiac Fever)

Legionella home page

About the Disease

Fast Facts

For Clinicians

For Media

Outbreaks

For Health Departments

Environmental Specimen
Collection & Management

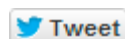
Diagnostic Testing

ELITE Program for Labs

Publications



2



Email page link



Print page

Contact Us:



Centers for Disease
Control and
Prevention
1600 Clifton Rd
Atlanta, GA 30333



800-CDC-INFO
(800-232-4636)
TTY: (888) 232-6348

New Hours of
Operation
8am-8pm
ET/Monday-Friday
Closed Holidays



cdcinfo@cdc.gov

Related Links

ELITE program
application

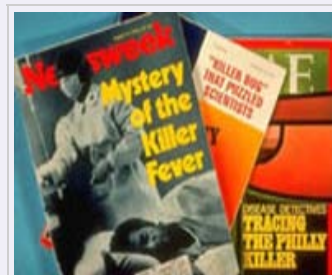
CDC *Legionella* Healthy
Swimming web site

CDC Vessel Sanitation
Program

Unexplained Respiratory
Disease Outbreaks
(URDO)

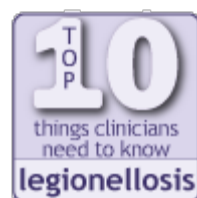
European Legionnaires'
Disease Surveillance
Network (ELDSNet)

Legionnaires' disease (LEE-juh-nares) is caused by a type of bacterium called *Legionella* (LEE-juh-nell-a). The bacterium is named after a 1976 outbreak, when many people who went to a Philadelphia convention of the American Legion suffered from this disease, a type of pneumonia (lung infection). A milder infection, also caused by *Legionella* bacteria, is called Pontiac fever. The term "legionellosis" (LEE-juh-nuh-low-sis) may be used to refer to either Legionnaires' disease or Pontiac fever.



The pictured magazine covers feature the work of public health professionals in 1976 as they raced to trace the origin of the first documented outbreak of Legionnaires' disease in Philadelphia, Pennsylvania.

For Clinicians



Top 10 things every

For Health Departments

- Identify and report travel-associated Legionnaires' disease
- Epidemiologic investigation tools

[more »](#)

clinician needs to know about legionellosis including diagnosing, testing, obtaining a specimen for culture, treating, and reporting cases.

[more »](#)

Environmental Specimen Collection & Management



Recovery of *Legionella* Manual

- Sampling protocol
- Procedures for collecting and processing
- Potential sampling sites

 [Email](#)  [Print](#)

ELITE Program

The



Environmental Legionella Isolation Techniques Evaluation (ELITE) Program was created as a way for laboratories to test their *Legionella* isolation techniques against standardized samples.

[more »](#)

Page last reviewed: February 5, 2013
Page last updated: February 5, 2013
Content source: [National Center for Immunization and Respiratory Diseases, Division of Bacterial Diseases](#)

[Home](#) [A-Z Index](#) [Site Map](#) [Policies](#) [Using this Site](#) [Link to Us](#) [All Languages](#) [CDC Mobile](#) [Contact CDC](#)

Centers for Disease Control and Prevention 1600 Clifton Rd. Atlanta, GA 30333, USA
800-CDC-INFO (800-232-4636) TTY: (888) 232-6348 - [Contact CDC-INFO](#)

