

From: "Richard Kahn" <rakahn@sbcglobal.net>
To: "Eric Jameson" <EJameson@dnr.state.ga.us>
Date: Thursday, 31 August, 2006 17:58:39
Subject: Addition of a new shielding design to our registry

ES
11905
9/1/2006
#1200

Dear Eric:

As we discussed last week, we would like to amend our registry to include a new shielding version of our CNA. The analyzer is virtually identical functionally with the same measuring chamber. The biggest difference is that with this unit the end user will need limit access around the unit when it is operating (a radiation survey is attached following the drawing). We include a safety interlock with the unit that will immediately shut down the neutron emissions to zero when the restricted area is accessed. ★

Please let me know whatever else I need to provide you to amend the registry - and please feel free to call me anytime.

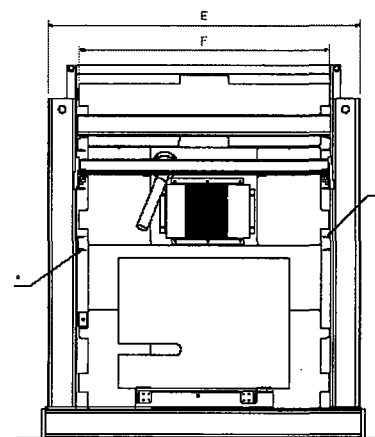
Thanks and best regards,

EADS* SODERN NORTH AMERICA, INC.
Richard A. Kahn, President

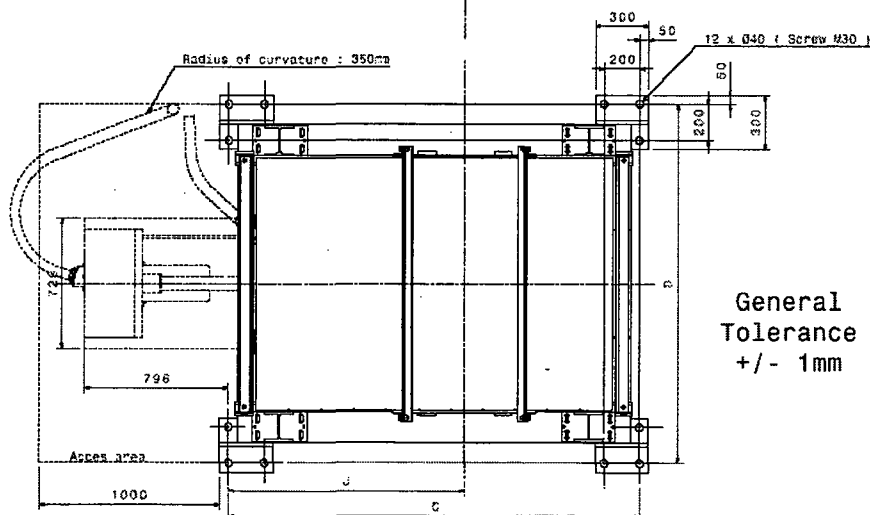
10455 Pacific Center Court
San Diego, CA 92121-4339
Phone: (858) 457-2000 Fax: (858) 457-2002
email: rkahn@sodernusa.com

! NOT TO SCALE !

Technical drawing of a mechanical assembly, likely a testing machine, showing dimensions A, B, C, D, E, F, G, H, I, J, K, L, M, N, O, P, Q, R, S, T, U, V, W, X, Y, Z. The drawing includes a side view and a top view, with a note "NOT TO SCALE".



Emission module : extended position

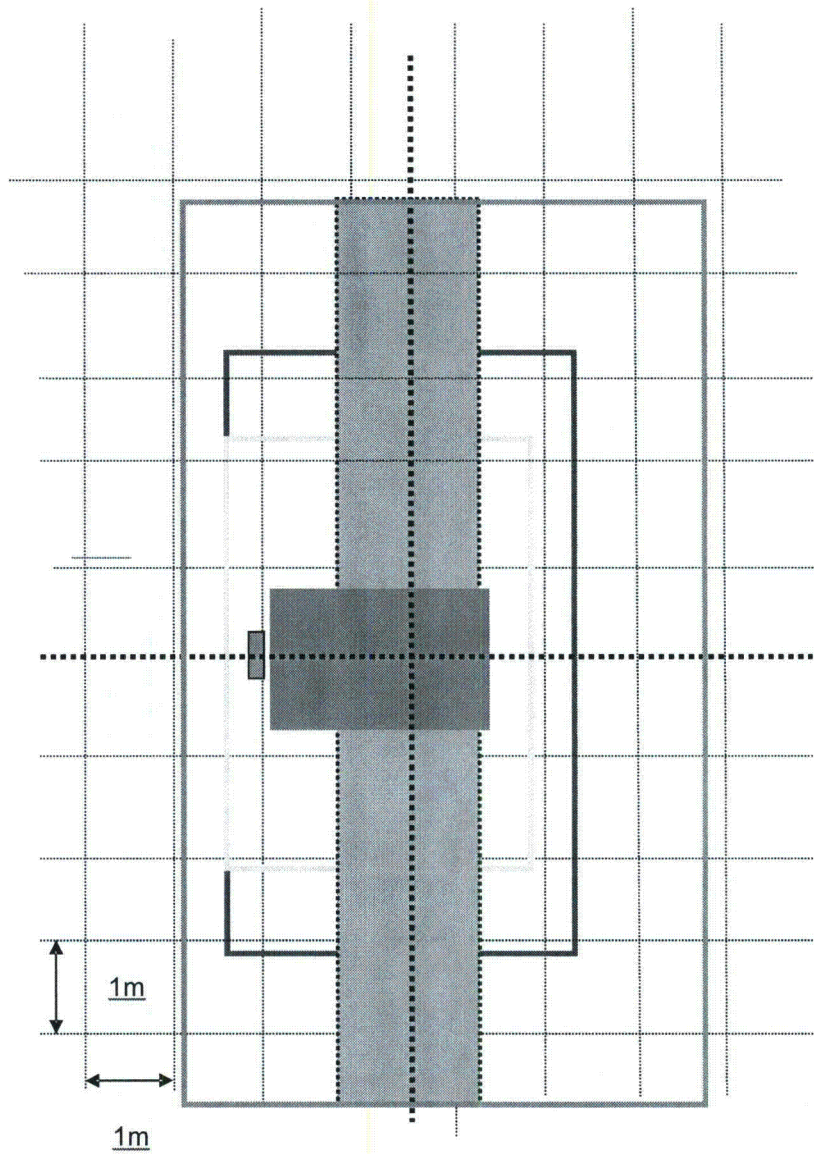






General
Tolerance
+/- 1mm

[illegible]

	800-S	1000-S	1200-S	1400-S
	(mm)	(mm)	(mm)	(mm)
Belt Width	800	1000	1200	1400
A	1810	1810	1810	2010
B	1850	1850	1900	1900
C	1830	1830	1830	2030
D	1590	1590	1590	1590
E	1350	1350	1350	1350
F	1050	1050	1050	1050
Weight	2300 Kg	2500 Kg	2600 Kg	3100 Kg

DOSE RATE MAP – CNA Gen III-S "(Small)"



	Conveyor Belt	Inaccessible area during CNA operation
	Perimeter A	< 2.5 mrem/h
	Perimeter B	< 0.75 mrem/h
	Perimeter P	< 0.25 mrem/h