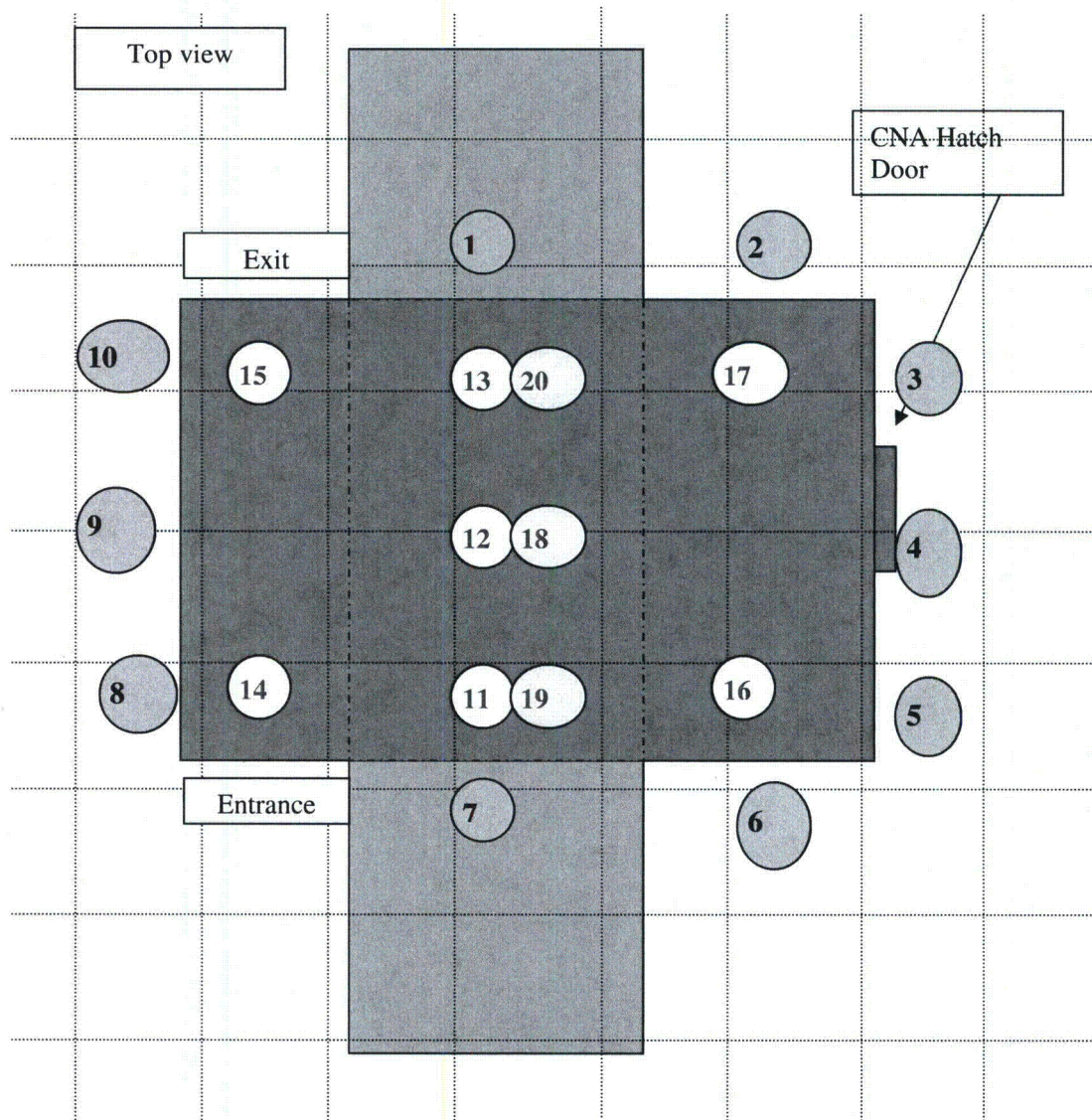


Coal CNA

Map of Radiation Survey Points



Points 1-10: Measurements recorded at height of 1m around perimeter
 Points 11-17: Measurements recorded along top surface
 Points 18-20: Measurements recorded along bottom surface



Device: Genie 16G S/N: M1124

Flux : 2.2×10^7 n/s

All data are in: X mRem/Hr; ___ mSv/Hr.

Conversion: 10 uSv = 1 mRem

NO MATERIAL ON BELT

*N/A Not available due to space limitations

| LOC | GAMMA | | NEUTRON | | TOTAL $\gamma + \eta$ | |
|-----|-------|--------|---------|--------|-----------------------|--------|
| | 30 cm | 100 cm | 30 cm | 100 cm | 30 cm | 100 cm |
| 1 | 0.60 | 0.18 | 3.50 | 1.0 | 4.1 | 1.18 |
| 2 | 0.06 | 0.07 | 0.22 | 0.26 | 0.28 | 0.33 |
| 3 | 0.055 | 0.05 | 0.1 | 0 | 0.155 | 0.05 |
| 4 | 0.055 | 0.049 | 0.23 | 0.007 | 0.285 | 0.056 |
| 5 | 0.075 | 0.066 | 0.08 | 0.001 | 0.155 | 0.067 |
| 6 | 0.08 | 0.09 | 0.23 | 0.26 | 0.26 | 0.35 |
| 7 | 0.60 | 0.16 | 3.50 | 1.10 | 4.1 | 1.26 |
| 8 | 0.06 | N/A | 0.007 | N/A | 0.067 | N/A |
| 9 | 0.1 | N/A | 0.1 | N/A | 0.2 | N/A |
| 10 | 0.06 | N/A | 0.005 | N/A | 0.065 | N/A |
| 11 | 0.09 | 0 | 0.13 | 0 | 0.22 | 0 |
| 12 | 0.08 | 0 | 0.16 | 0 | 0.24 | 0 |
| 13 | 0.07 | 0 | 0.12 | 0 | 0.19 | 0 |
| 14 | 0.04 | 0 | 0.03 | 0 | 0.07 | 0 |
| 15 | 0.03 | 0 | 0.04 | 0 | 0.07 | 0 |
| 16 | 0.04 | 0 | 0.03 | 0 | 0.07 | 0 |
| 17 | 0.03 | 0 | 0.04 | 0 | 0.07 | 0 |
| 18 | 0.46 | N/A | 3.5 | N/A | 3.96 | N/A |
| 19 | 0.1 | N/A | 0.5 | N/A | 0.6 | N/A |
| 20 | 0.2 | N/A | 0.3 | N/A | 0.5 | N/A |

Detection Instruments:

Meter: Victoreen 190N S/N: 106245

Probe: Victoreen RP-N S/N: 106037

Meter: Radiagem 2000 S/N: 225

Calibration Due: 05/27/06

Calibration Due: 05/27/06

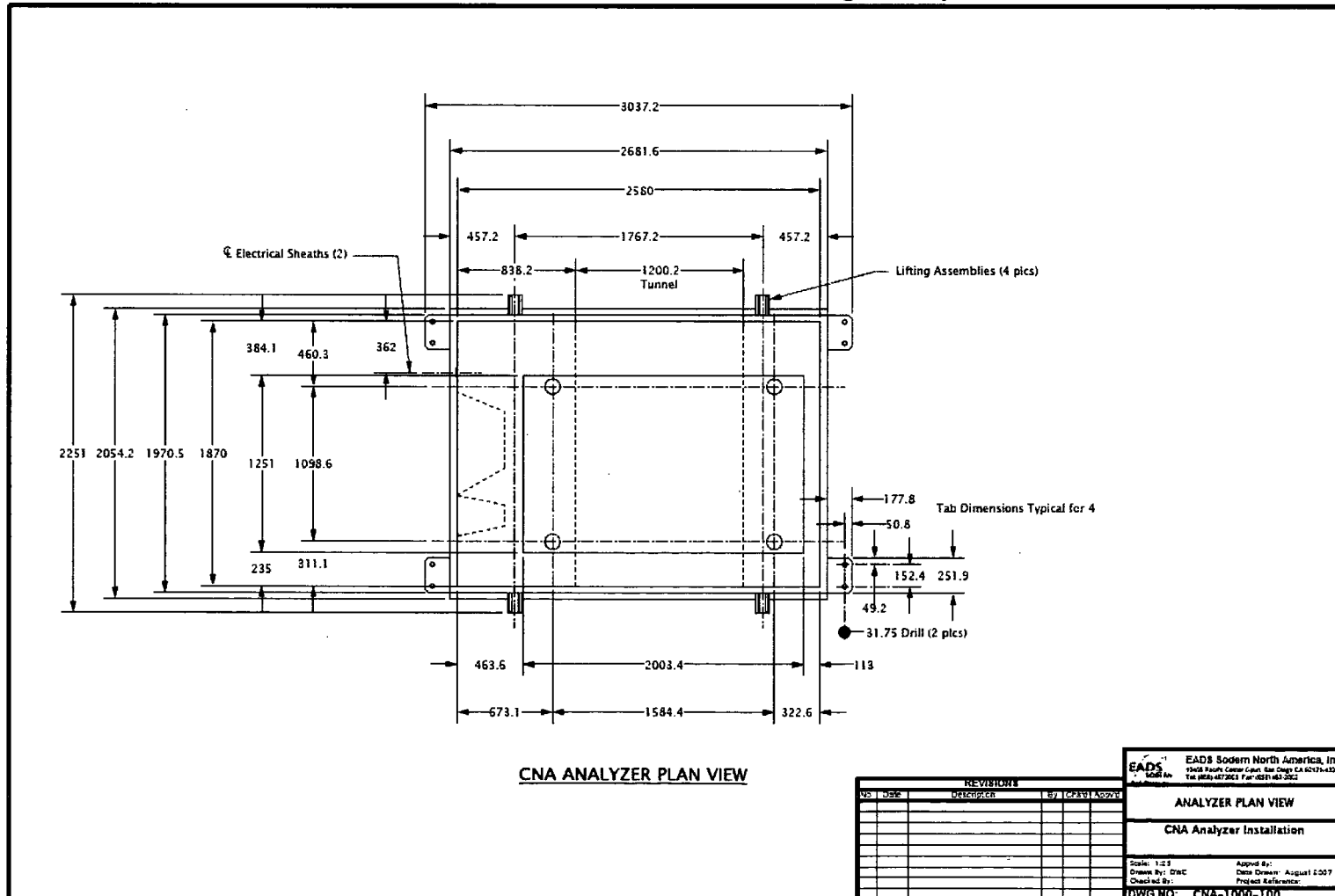
Calibration Due: 06/30/06

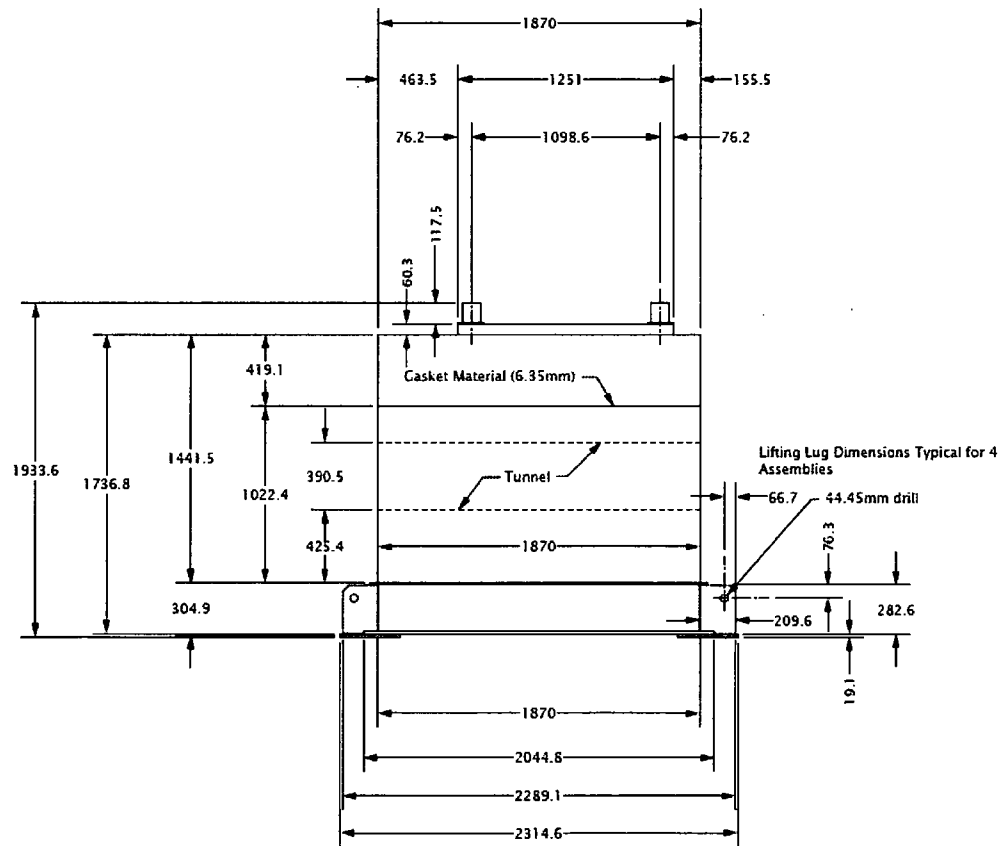
Customer Support Engineer: _____

Date: July 28, 2006

Damien J. Smith
EADS Sodern NA

APPENDIX 1: Mechanical Interfaces Drawing - Complete CNA





CNA ANALYZER RIGHT SIDE VIEW

| REVISIONS | | | | |
|-----------|------|-------------|----|----------------|
| No | Date | Description | By | Check/Approved |
| | | | | |
| | | | | |
| | | | | |
| | | | | |
| | | | | |
| | | | | |
| | | | | |
| | | | | |
| | | | | |

| | |
|---|---------------------------------------|
| EADS | EADS Sodern North America, Inc |
| 13456 South Center Court, San Diego CA 92121-4329 | |
| Tel: (619) 437-2000 Fax: (619) 437-3002 | |
| ANALYZER PLAN VIEW | |
| CNA Analyzer Installation | |
| Scale: 1:1 | Approved By: |
| Drawn By: DMC | Date Drawn: August 2007 |
| Checked By: | Project Reference: |
| DWG NO: CNA-1000-105 | |

