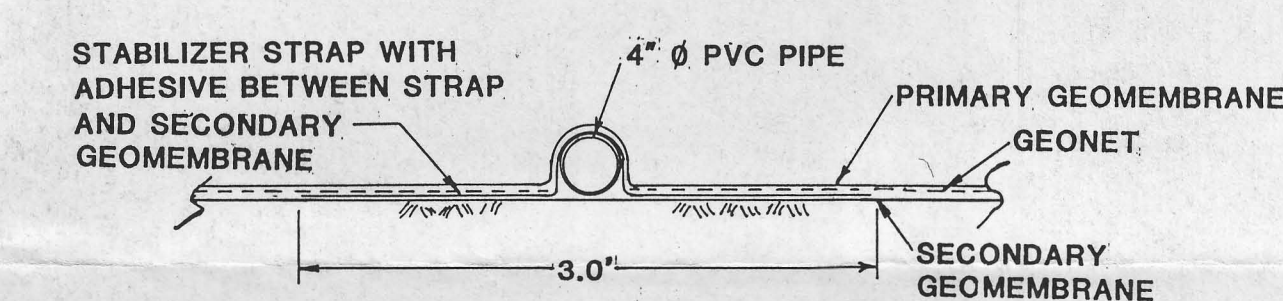
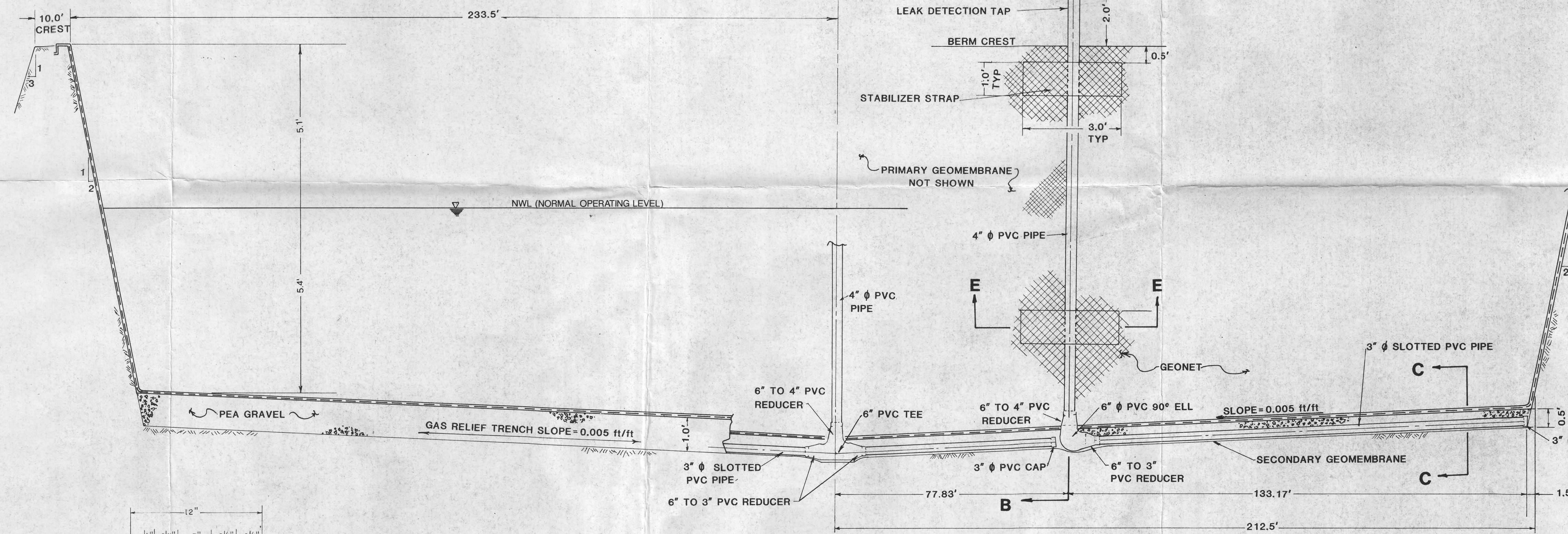


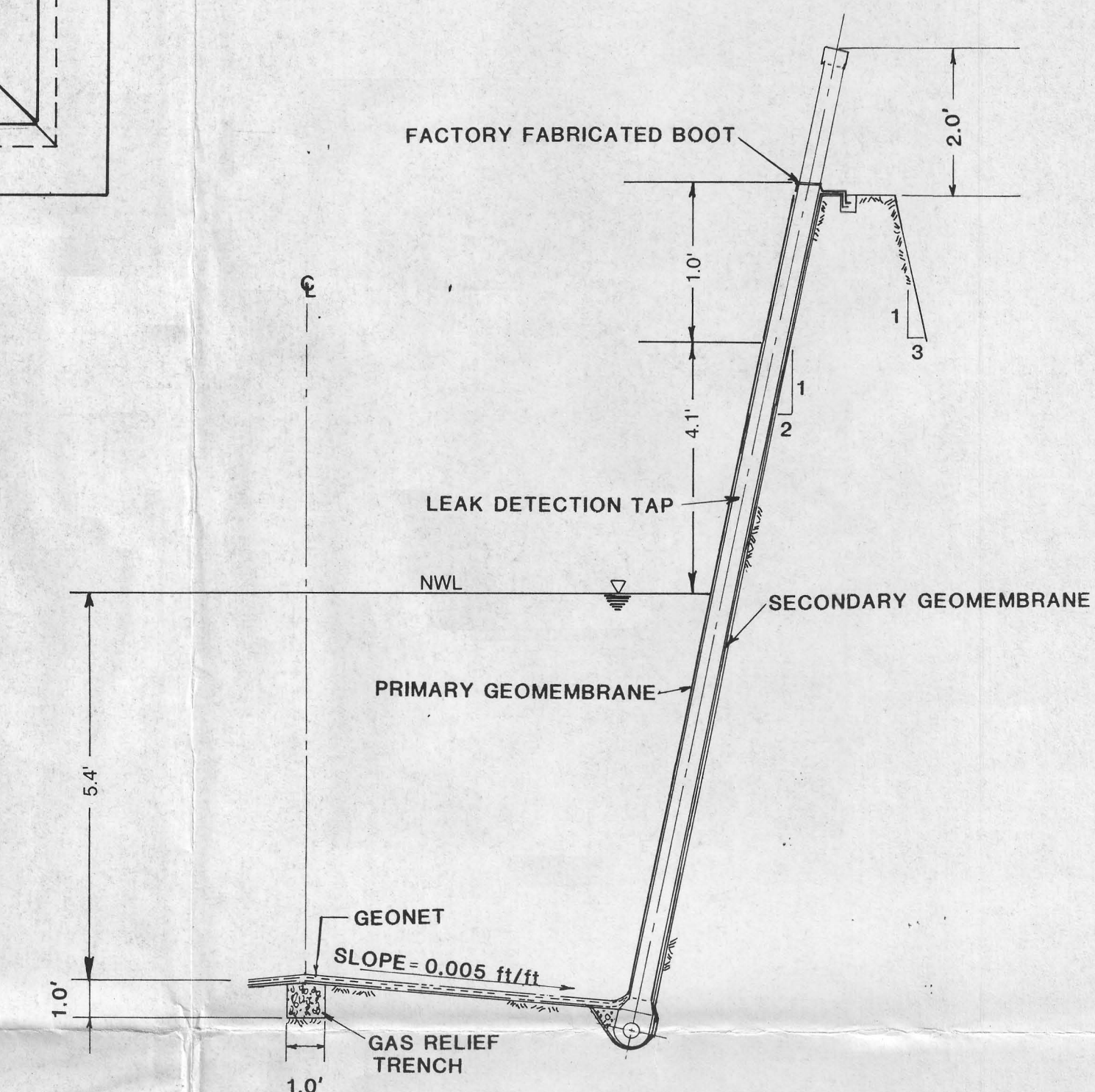
**TYPICAL EVAPORATION POND  
PLAN VIEW**  
SCALE: 1" = 20'



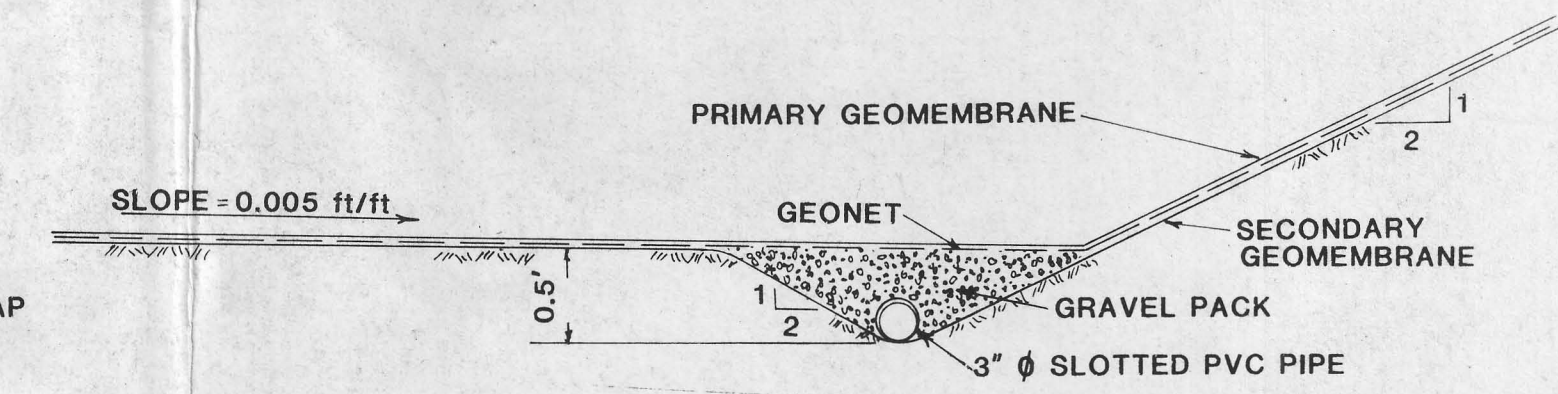
**ENLARGED SECTION E-E**



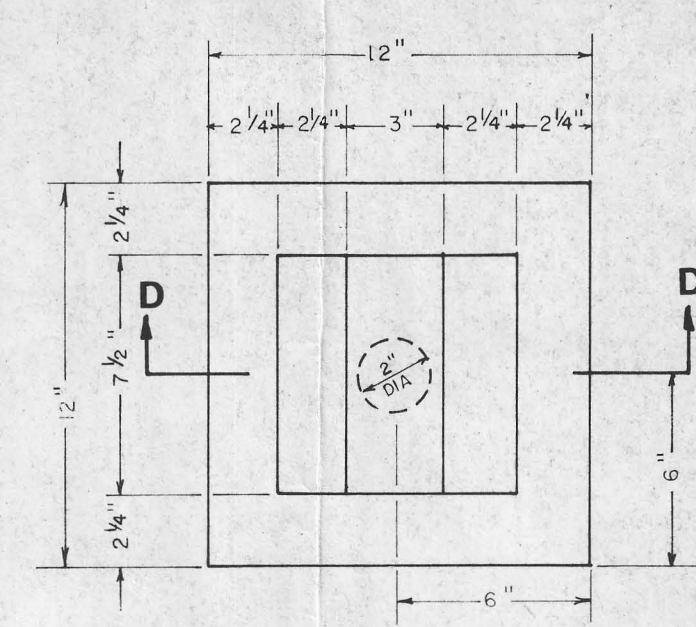
**SECTION A-A**  
SCALE: HOR. 1" = 20', VERT. 1" = 2'



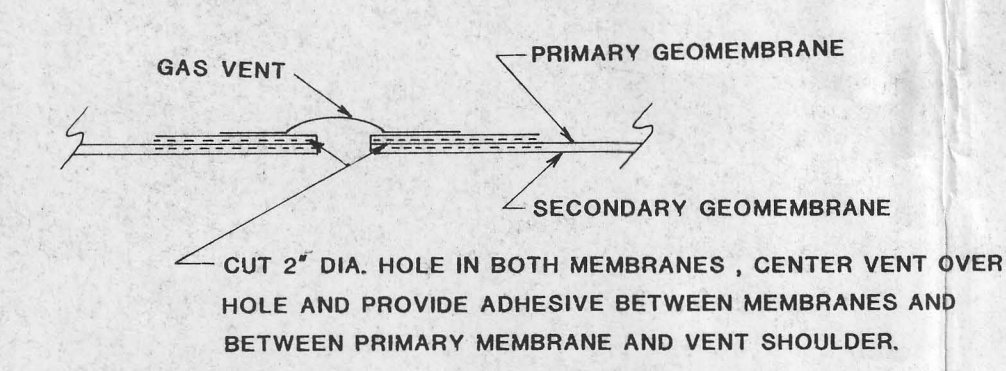
**SECTION B-B**  
SCALE: HOR. 1" = 20', VERT. 1" = 2'



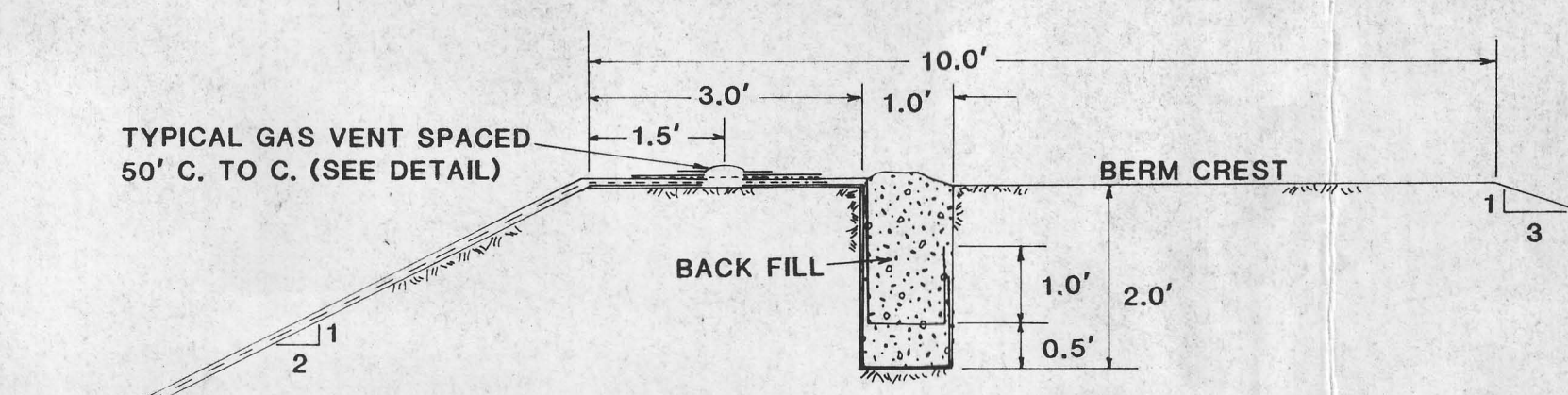
**ENLARGED SECTION C-C**  
SCALE: 1" = 1'



**TYPICAL GAS VENT DETAIL**  
SCALE: 1" = 6"

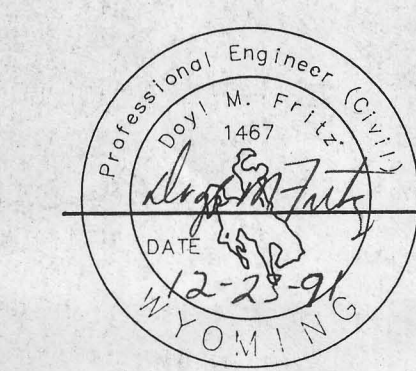


**SECTION D-D**



**LINER TERMINATION DETAIL**  
SCALE: 1" = 2'

**CERTIFICATE OF ENGINEER**  
STATE OF WYOMING) SS  
COUNTY OF SHERIDAN)  
I, Doyle M. Fritz, hereby certify that these drawings were prepared by myself or under my direct supervision based on topographic maps supplied by Pathfinder Mines Corporation and that they correctly represent the facilities described in the accompanying application which are designed to meet the requirements of the Wyoming Environmental Quality Act and its regulations.



SHEET 5 OF 5

**PATHFINDER MINES CORPORATION**

**CONSTRUCTION DETAILS,  
OPTION B  
(DOUBLE LINER OPTION)**

REVISIONS	
Date	By

**WWC ENGINEERING**  
A DIVISION OF WESTERN WATER CONSULTANTS, INC.  
• CIVIL - MINING - CONSTRUCTION ENGINEERING •

1949 SUGARLAND DR., SUITE 134 P.O. BOX 4128 701 ANTLER DR.  
SHERIDAN, WY. 82801 LARAMIE, WY. 82001 CASPER, WY. 82601  
(307) 672-0761 (307) 742-0031 (307) 473-2707

FILE: Drawn By: KR Checked By: DMF Date: 12-20-91 Scale: AS SHOWN