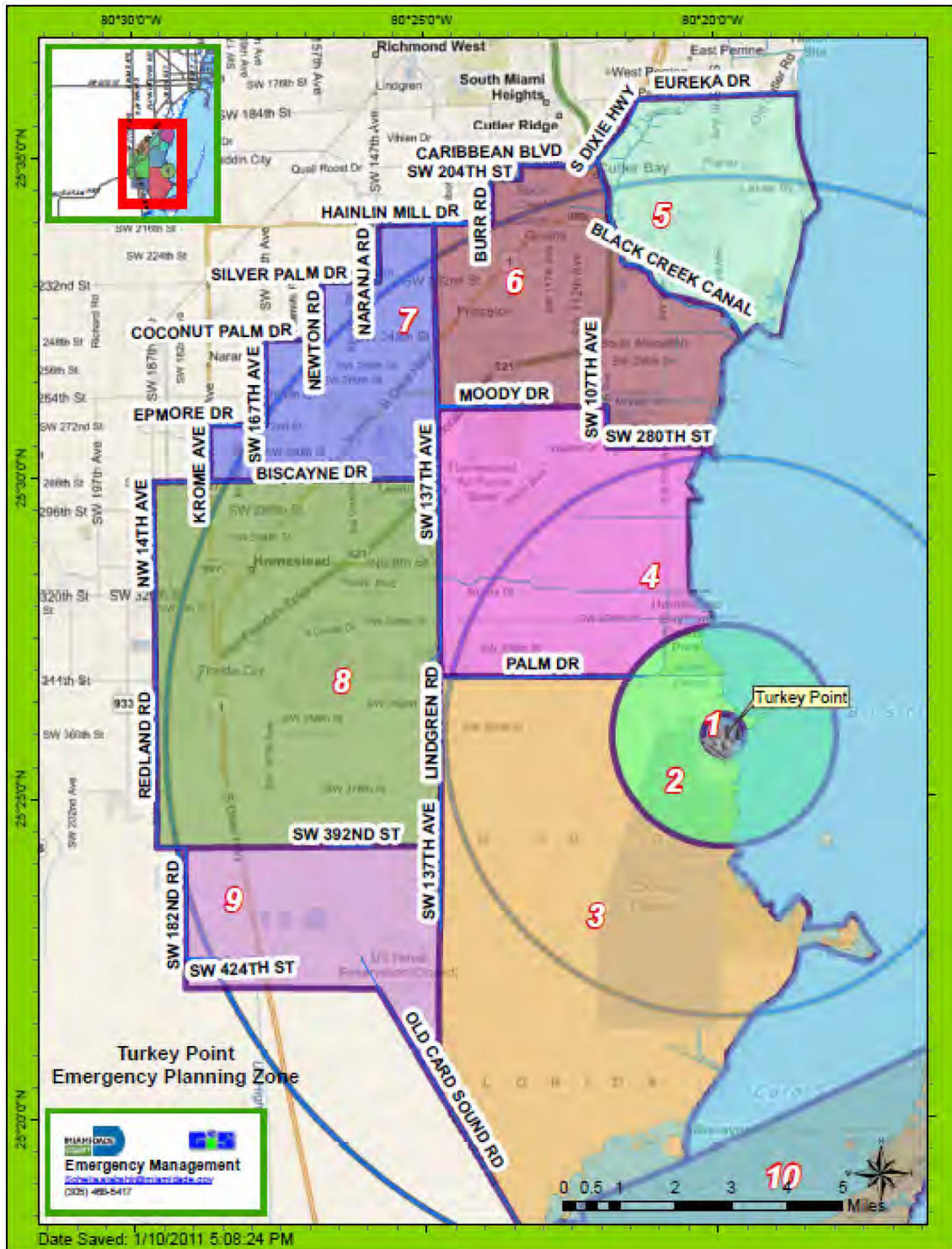

TURKEY POINT NUCLEAR POWER PLANT SITE PLAN

FIGURES TABLE OF CONTENTS		PAGE
II-1	Turkey Point Nuclear Power Plant 10-mile Emergency Planning Zone	II-35
II-2	Turkey Point Nuclear Power Plant 50-mile Ingestion Pathway Zone	II-36
II-3	Miami-Dade County Primary/Support Responsibilities	II-37
II-4	Miami-Dade County Organizational Chart.....	II-38
II-5	Monroe County Primary/Support Responsibilities	II-39
II-6	Monroe County Organizational Chart.....	II-41
II-7	Miami-Dade County Emergency Operations Centers and Facilities	II-42
II-8	Monroe County Emergency Operations Centers.....	II-43
II-9	Miami-Dade County Reception Centers and Shelters	II-44
II-10	Miami-Dade County Monitoring/Washdown Stations	II-47
II-11	Monroe County Monitoring/Washdown Stations, Reception Centers, and Shelters	II-48
II-12	Miami-Dade and Monroe County Radiological Emergency Equipment and Supplies.....	II-50
II-13	Medical/Special Needs Facilities, Turkey Point 10 mile Emergency Planning Zone	II-52
II-14	Population Distribution, Turkey Point 10 mile Emergency Planning Zone	II-58
II-15	Evacuation Routes, Turkey Point 10 mile EPZ.....	II-59
II-16	Evacuation Time and Traffic Capacity Estimates, Turkey Point 10 mile Emergency Planning Zone	II-60
II-17	Schools, Turkey Point 10-mile Emergency Planning Zone.....	II-61
II-18	Daycare Centers, Turkey Point 10-mile Emergency Planning Zone	II-66
II-19	Public/Private Airports and Emergency Hospital Helipads	II-77

TURKEY POINT NUCLEAR POWER PLANT SITE PLAN

FIGURE II-1
TURKEY POINT NUCLEAR POWER PLANT 10 MILE EMERGENCY PLANNING ZONE



TURKEY POINT NUCLEAR POWER PLANT SITE PLAN

FIGURE II-2
TURKEY POINT NUCLEAR POWER PLANT 50-MILE INGESTION PATHWAY ZONE

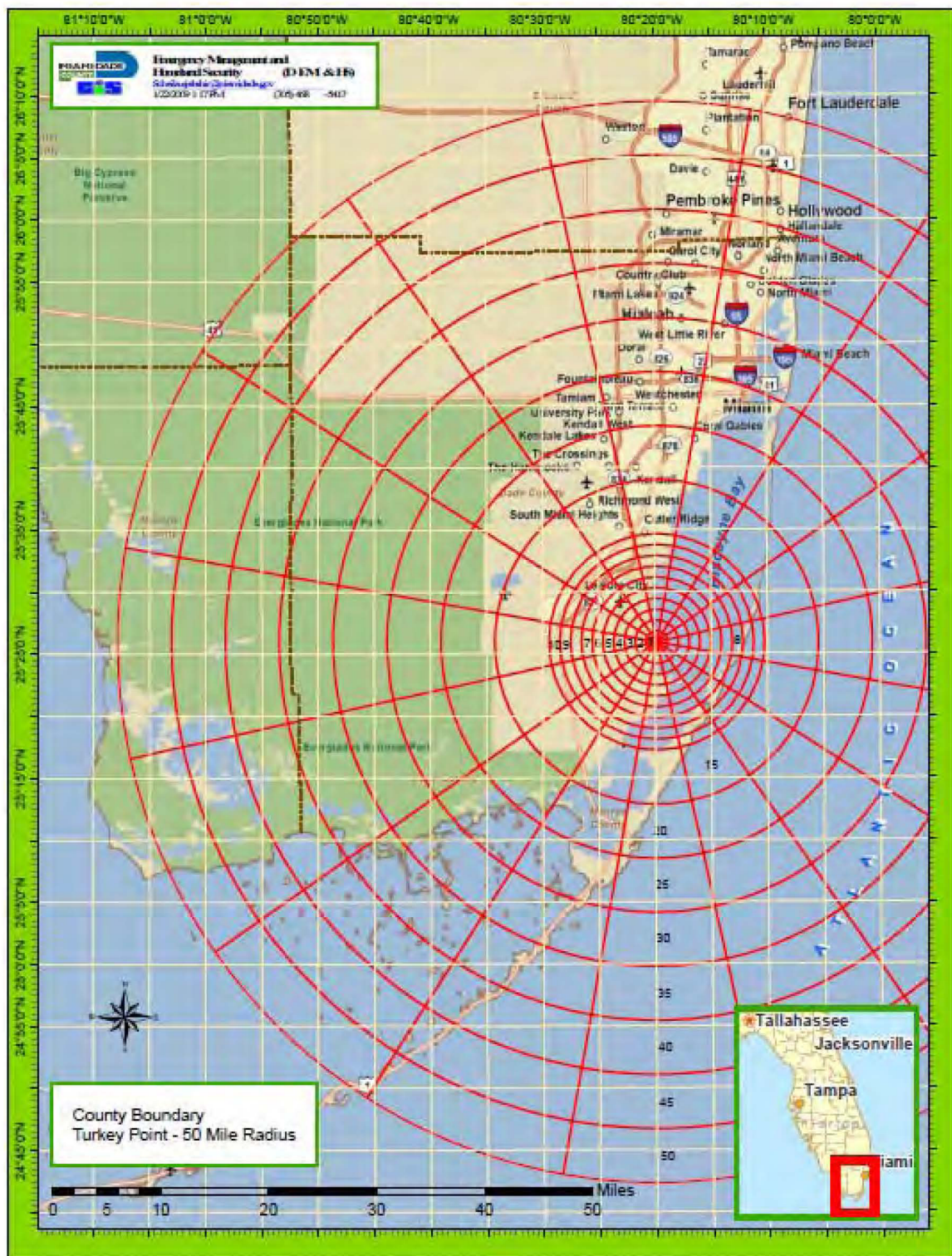


FIGURE II-3 (CONTINUED)

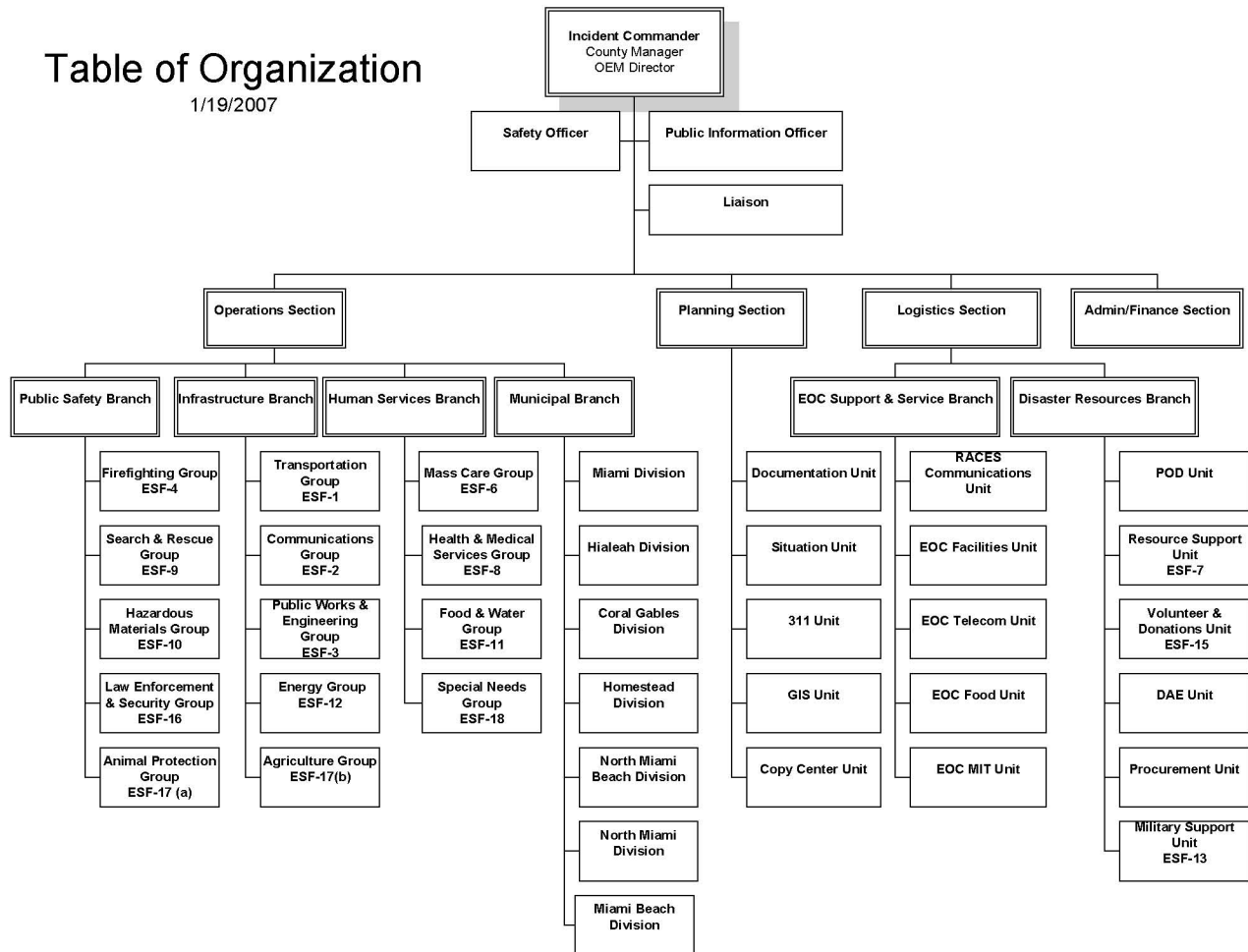
[illegible]

TURKEY POINT NUCLEAR POWER PLANT SITE PLAN

FIGURE II-4
MIAMI-DADE COUNTY ORGANIZATIONAL CHART

Table of Organization

1/19/2007



TURKEY POINT NUCLEAR POWER PLANT SITE PLAN

**FIGURE II-5
MONROE COUNTY PRIMARY/SUPPORT RESPONSIBILITIES**

Direction and Control:	<u>Primary:</u> Emergency Management Department <u>Support:</u> Emergency Management Department; State of Florida
Emergency Alert/Notification:	<u>Primary:</u> Communications, Ocean Reef Public Safety, Emergency Management Department, State of Florida
Communications:	<u>Primary:</u> Communications, Emergency Management Department; State of Florida
Accident Assessment:	<u>Primary:</u> Florida Department of Health-Bureau of Radiation Control; Licensee
Protective Response:	<u>Primary:</u> Emergency Management Department, County Mayor <u>Support:</u> State of Florida
Public Alert/Notification:	<u>Primary:</u> Communications <u>Support:</u> Emergency Management, Ocean Reef Public Safety, Fire Rescue, Sheriff's Office
Public Information:	<u>Primary:</u> Sheriff's Office PIO <u>Support:</u> Emergency Management, State of Florida, Licensee
Radiological Exposure Control:	<u>Primary:</u> Fire Rescue, Licensee <u>Support:</u> Florida Department of Health-Bureau of Radiation Control
Decontamination:	<u>Primary:</u> Fire Rescue
Control of Access to Evacuated Area:	<u>Primary:</u> Sheriff's Office, Florida Highway Patrol <u>Support:</u> Fish and Wildlife Commission, Fire Rescue
Field Monitoring and Sampling:	<u>Primary:</u> Florida Department Health-Bureau of Radiation Control <u>Support:</u> Licensee
Registration of Evacuees:	<u>Primary:</u> American Red Cross
Fire & Rescue:	<u>Primary:</u> Fire Rescue

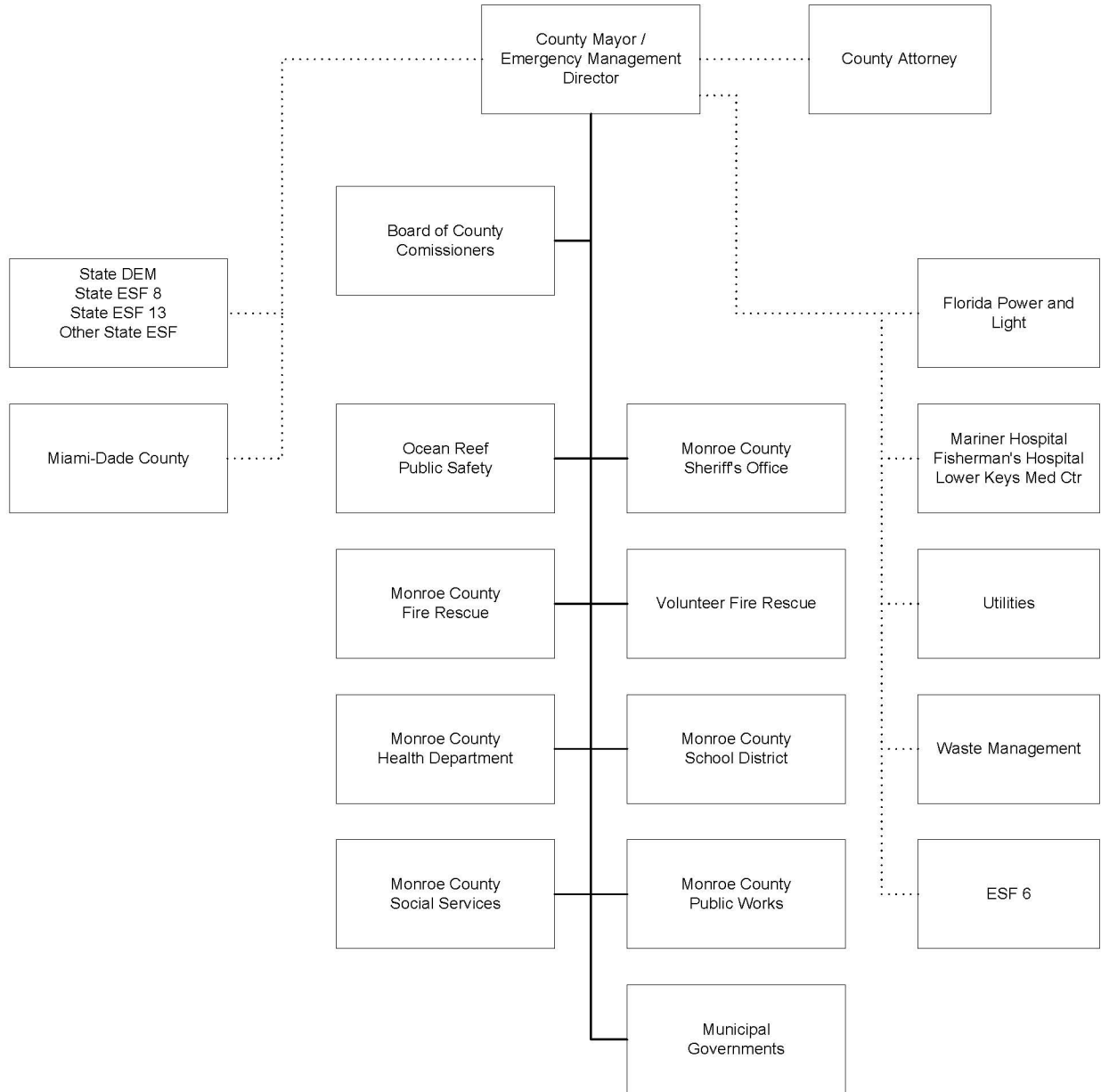
Appendix II

TURKEY POINT NUCLEAR POWER PLANT SITE PLAN

	Support: Ocean Reef Public Safety
Emergency Medical Services:	<u>Primary:</u> Fire Rescue/EMS Key Largo Ambulance <u>Support:</u> Department of Public Health, Ocean Reef Public Safety,
Law Enforcement:	<u>Primary:</u> Sheriff's Office, Florida Highway Patrol <u>Support:</u> Fish and Wildlife Commission
Transportation:	<u>Primary:</u> Social Services Department, School District <u>Support:</u> Emergency Management Department; Ocean Reef Public Safety; Volunteer Ambulance
Food Quality:	<u>Primary:</u> DOH
Potable Water:	<u>Primary:</u> DOH
Shelter/Care:	<u>Primary:</u> American Red Cross, School District
Public Health/Sanitation:	<u>Primary:</u> DOH <u>Support:</u> Solid Waste Management, State of Florida
Social Services:	<u>Primary:</u> Social Services Department <u>Support:</u> State of Florida
Road Passage/Maintenance:	<u>Primary:</u> Public Works Division, Florida Department of Transportation
Security:	<u>Primary:</u> Sheriff's Office <u>Support:</u> Florida Highway Patrol, Fish and Wildlife Commission
Traffic Control:	<u>Primary:</u> Sheriff's Office <u>Support:</u> Florida Highway Patrol, Fish and Wildlife Commission
Recovery and Re-entry:	<u>Primary:</u> Florida Department of Health-Bureau of Radiation Control, Emergency Management Department, Licensee

TURKEY POINT NUCLEAR POWER PLANT SITE PLAN

FIGURE II-6
MONROE COUNTY ORGANIZATIONAL CHART

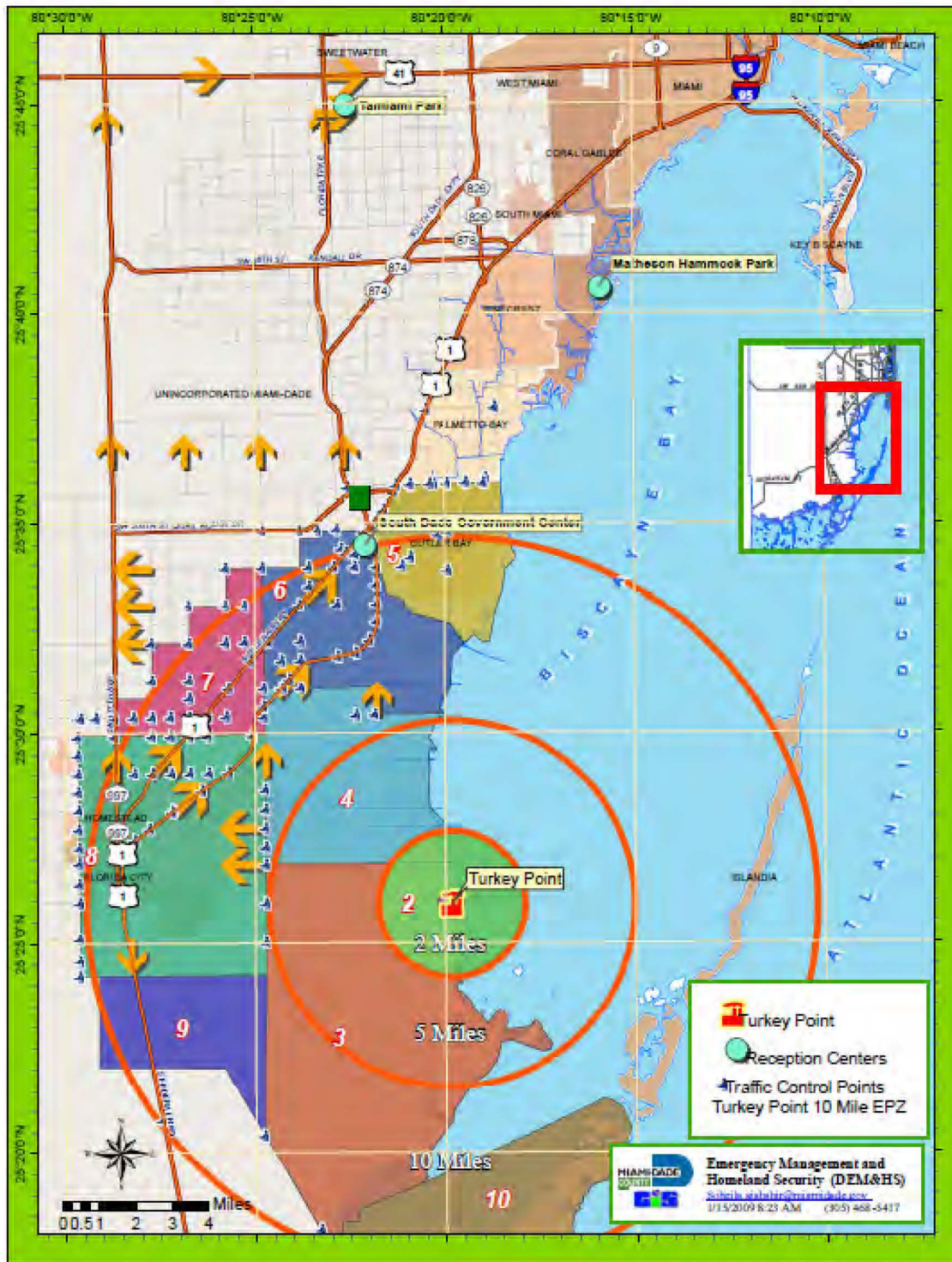


Direction and Control —————
Coordination

Revised 06/2011

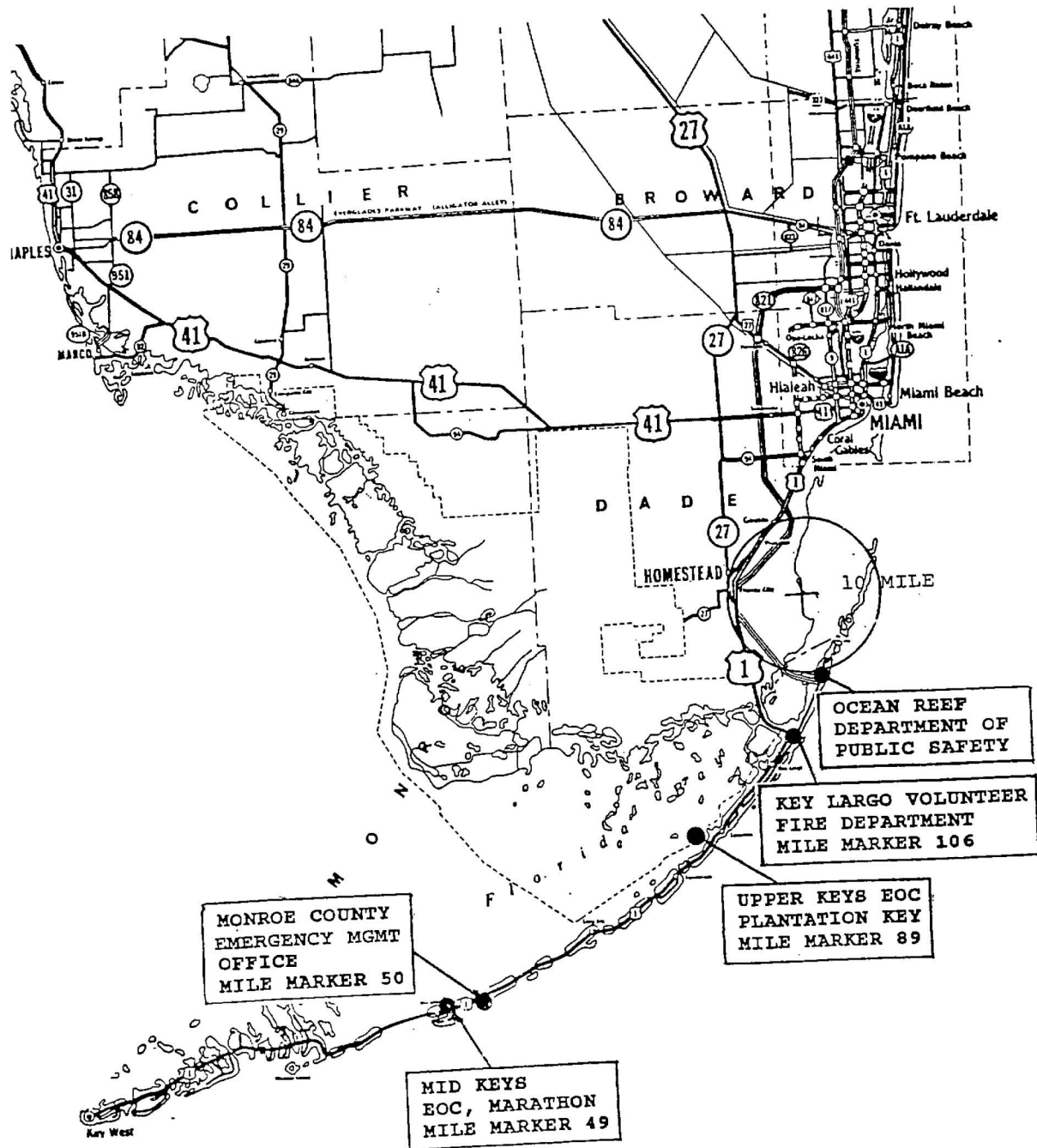
TURKEY POINT NUCLEAR POWER PLANT SITE PLAN

FIGURE II-7
MIAMI-DADE COUNTY EMERGENCY OPERATIONS CENTERS AND FACILITIES



TURKEY POINT NUCLEAR POWER PLANT SITE PLAN

FIGURE II-8
MONROE COUNTY EMERGENCY OPERATION CENTERS



TURKEY POINT NUCLEAR POWER PLANT SITE PLAN

**FIGURE II-9
MIAMI-DADE COUNTY RECEPTION CENTERS AND SHELTERS**

EMERGENCY RECEPTION CENTERS		CAPACITY
1.	Tamiami Park (Primary) 10901 Coral Way Miami Florida	5000*
2.	Florida International University (Secondary) 10700 SW 8th Street (Tamiami Trail) Miami, Florida	

EMERGENCY SHELTER/CARE CENTERS		CAPACITY
<i>Primary Shelters</i>		
1.	Barbara Goleman Senior 14100 NW 89th Ave	1248
2.	Charles R Drew Middle 1801 NW 60th St	1050
3.	Dr Michael M Krop Senior 1410 NE 215th St	3383
4.	Felix Valera Senior 15255 SW 96th St	2913
5.	South Miami Senior 6856 SW 53rd St	2500
6.	Doral Middle 5005 NW 112th Ave	1357
7.	Miami Carol City Senior 3422 NW 187th St	2322
8.	Miami Coral Park Senior 8865 SW 16th St	1131
9.	North Miami Beach Senior 1247 NE 167th St	3152
10.	W R Thomas Middle 13001 SW 26th St	2050
11.	Dr Carlos J Finlay Elementary 851 SW 117th Ave	1407
12.	Hialeah-Miami Lakes Senior 7977 W 12th Ave	1264
13.	Miami Sunset Senior 13125 SW 72nd St	1085
14.	North Miami Middle 13105 NE 7th Ave	1303
15.	Orchard Villa Elementary 5720 NW 13th Ave	1179

TURKEY POINT NUCLEAR POWER PLANT SITE PLAN

FIGURE II-9 continued

EMERGENCY SHELTER/CARE CENTERS		CAPACITY
<i>Secondary Shelters</i>		
1.	Ben Sheppard Elementary 5700 W 24th Ave	1420
2.	Hammocks Middle 9889 Hammocks Blvd	1467
3.	Miami Southridge Senior 19355 SW 114th Ave	1082
4.	Palm Lakes Elementary 7450 W 16th Ave	649
5.	Paul L Dunbar Elementary 505 NW 20th St	786
6.	Eneida M Hartner Elementary 401 NW 29th St	1306
7.	Claude Pepper Elementary 14550 SW 96th St	1258
8.	Miami Northwestern Senior 1100 NW 71st St	567
9.	Palmetto Senior 7460 SW 118th St	2313
10.	Sunshine Pavilion at Tamiami Park 10901 Coral Way	2450
11.	Dante Fascell Elementary 15625 SW 80th St	931
12.	Gilbert Porter Elementary 15851 SW 112th St	1769
13.	Joe Hall Elementary 1901 SW 134th Ave	914
14.	Olinda Elementary 5536 NW 21st Ave	1701
15.	Stirrup Elementary 330 NW 97th Ave	775
<i>Tertiary Shelters</i>		
1.	Bowman Foster Ashe Elementary 6601 SW 152nd Ave	1386
2.	Calusa Elementary 9580 W Calusa Club Dr	900
3.	Citrus Grove Middle 2153 NW 3rd St	447
4.	Greynolds Park PLC 1575 NE 177th St	519
5.	James Bright Elementary 2530 W 10th Ave	1208
6.	Kelsey L Pharr Elementary 2000 NW 46th St	569
7.	Lake Stevens Elementary 5101 NW 183rd St	1018

TURKEY POINT NUCLEAR POWER PLANT SITE PLAN

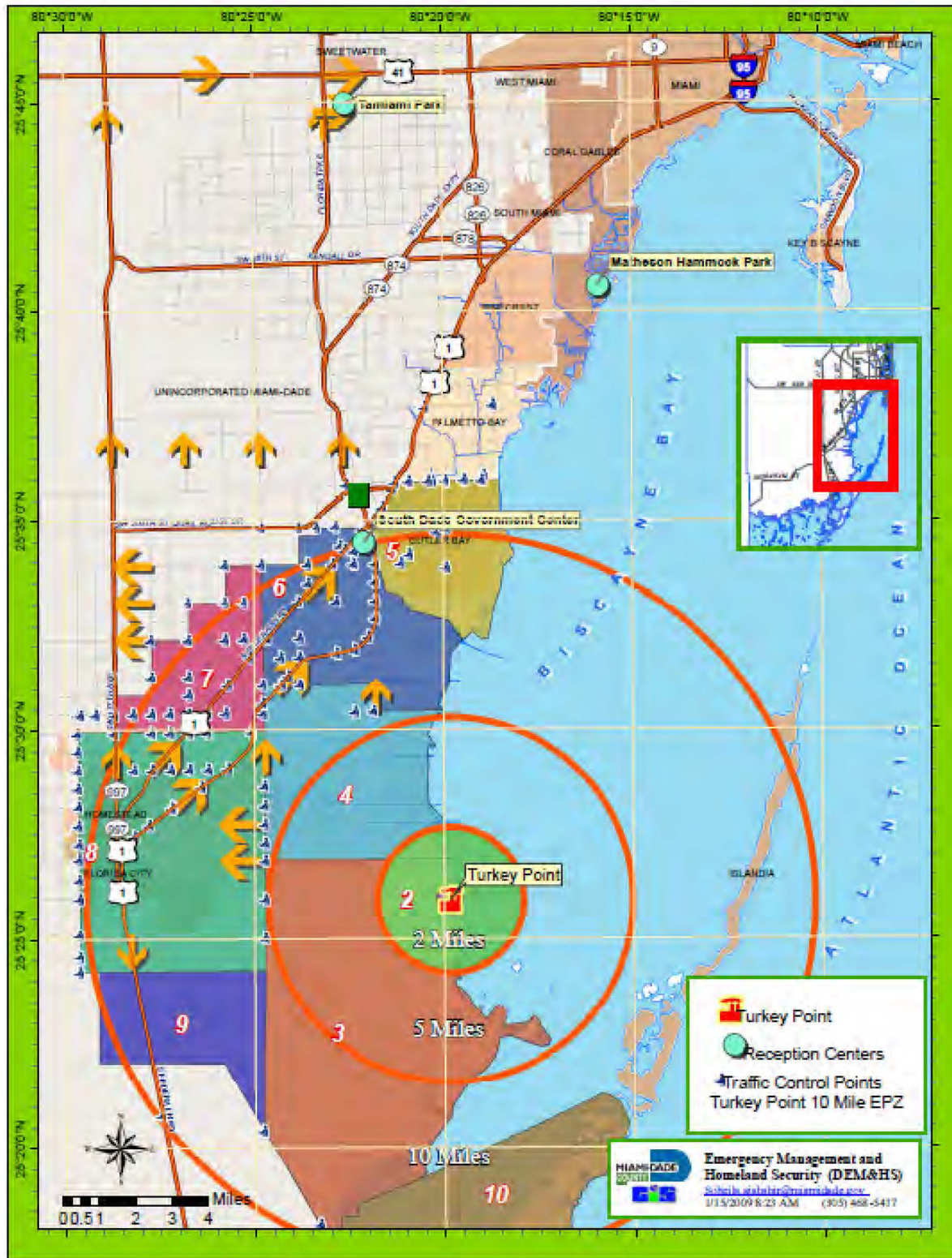
FIGURE II-9 continued

EMERGENCY SHELTER/CARE CENTERS		CAPACITY
<i>Tertiary Shelters (continued)</i>		
8.	M S Douglas Elementary 11901SW 2nd St	1569
9.	Miami Killian Senior 10655 SW 97th Ave	420
10.	Miami Shores Elementary 10351 NE 5th Ave	287
11.	Norwood Elementary 19810 NW 14th Ct	1027
12.	Oliver Hoover Elementary 9050 Hammocks Blvd	1273
13.	Palm Springs North Elementary 17615 NW 82nd Ave	1029
14.	Royal Green Elementary 13047 SW 47th St	563
15.	Ruth Kruse Owens 11001 SW 76th St	741
16.	Southwood Middle 16301 SW 80th Ave	516
17.	Village Green Elementary 12265 SW 34th St	565
TOTAL CAPACITY		60769

Appendix II

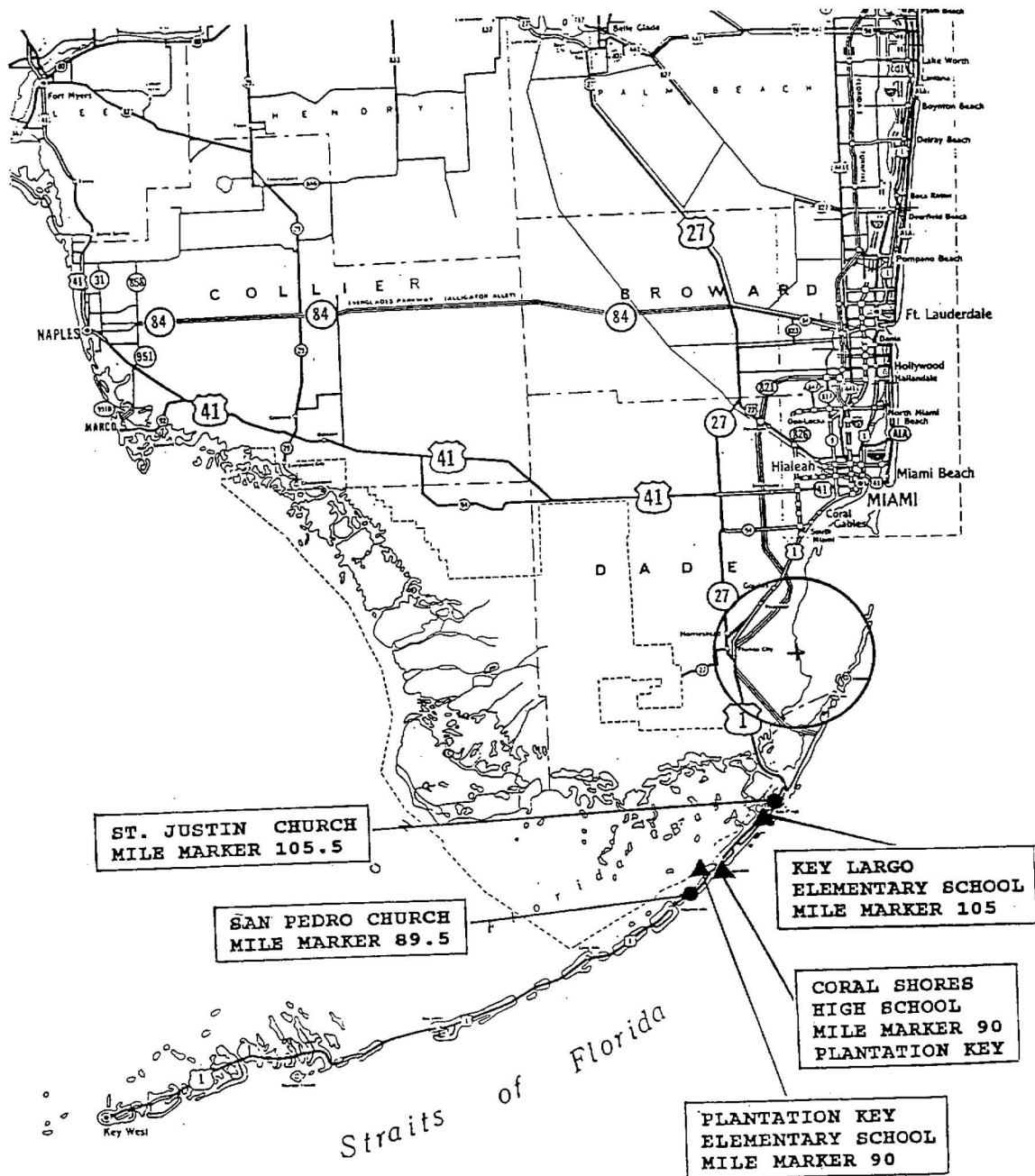
TURKEY POINT NUCLEAR POWER PLANT SITE PLAN

FIGURE II-10
MIAMI-DADE COUNTY MONITORING AND WASHDOWN STATIONS



TURKEY POINT NUCLEAR POWER PLANT SITE PLAN

FIGURE II-11
MONROE COUNTY MONITORING & WASHDOWN STATIONS,
RECEPTION CENTERS, AND SHELTERS



TURKEY POINT NUCLEAR POWER PLANT SITE PLAN

FIGURE II-11 continued

EMERGENCY WORKER MONITORING & WASHDOWN STATION AND RECEPTION CENTER

Vehicle Washdown Station
Key Largo Fire Station #2
Mile Marker 106

<u>SHELTER RECEPTION CENTER</u>	<u>CAPACITY</u>
---------------------------------	-----------------

*Key Largo School Mile Marker 105 (oceanside)	1,435
--	-------

Total	1,435
-------	-------

*Primary monitoring/decontamination station and reception center

TURKEY POINT NUCLEAR POWER PLANT SITE PLAN

**FIGURE II-12
MIAMI-DADE COUNTY RADIOLOGICAL EMERGENCY EQUIPMENT AND SUPPLIES**

RADIOLOGICAL MONITORING EQUIPMENT

(45) CDV 777-1 radiological emergency response kits that include:

- 1 - CDV-700 low range detection meter
- 1 - CDV-715 high range detection meter
- 6 - Ludlum portal monitors

DOSIMETRY

500 dosimeter badges
500 CDV 139 dosimeters
500 CDV - 742 (0-200R)

PROTECTIVE CLOTHING

Fire/Rescue full turnout gear
Helmet
Nomex coat
Rubber boots
Rubber gloves
Tyvek suits
Self contained breathing apparatus
Law Enforcement all weather protective clothing

EMERGENCY EQUIPMENT

Decontamination equipment and supplies

COMMUNICATIONS EQUIPMENT

Hot Ring Down, dedicated telephone system
Emergency Satellite Communications System
Local Government 800 MHz Radio (Miami-Dade County)
Amateur Radio
Fire/Rescue Network
Law Enforcement Network
Med-Com
Commercial Telephones
Cellular Telephones
Police News-FA
Cable Television (CATV) Override

TURKEY POINT NUCLEAR POWER PLANT SITE PLAN

**FIGURE II-12
MONROE COUNTY RADIOLOGICAL EMERGENCY EQUIPMENT AND SUPPLIES**

RADIOLOGICAL MONITORING EQUIPMENT

(8) CD V-777-1 radiological emergency response kits which include:

- 1 - CD V-700 Low range detection meter
- 11 – Canberra Ultra/Radiac
- 1 – Ludlum Portal Monitor

DOSIMETRY

- (45) Radiological Response Team Go Kits
 - 1 - CDV - 139 (0-500 mR) dosimeter
 - 1 - CDV - 142 (0-2R) dosimeters
 - 1 - TLD Thermoluminescent dosimeters

(10) CDV - 750 Dosimeter Charging Units

(60) - CDV 138(0-200 mR) dosimeters

(27) – CDV 139 (0-500mR) dosimeters

(80) – CDV – 142 (0-20R) dosimeters

105 – TLD Thermoluminescent dosimeters

PROTECTIVE CLOTHING

Fire/Rescue full turnout gear

Helmet

Nomex gloves

Rubber boots

Leather gloves

Tyvek suits

Self contained breathing apparatus

EMERGENCY EQUIPMENT

Decontamination equipment and supplies

2 portable vehicle decontamination stations

COMMUNICATIONS EQUIPMENT

Hot Ring Down dedicated telephone system

Emergency Satellite Communications System

Dedicated telephone line between Key Largo Emergency Operation Center and Ocean Reef

Emergency Operation Center

Local Government Radio-Frequency Modulation (Monroe County)

Amateur radio

Commercial telephones

Cable Television

Fax Machines

Cellular Telephones

TURKEY POINT NUCLEAR POWER PLANT SITE PLAN

FIGURE II-13
MEDICAL FACILITIES WITHIN TURKEY POINT 10-MILE EMERGENCY PLANNING ZONE

NAME/ADDRESS	SECTOR	ZONE
1. 22 Street Group Home (Sunrise Community 444 NW 22 Street Homestead, 33030	15	8
2. Advanced ALF, Inc 14335 SW 288 th Street Homestead, 33033	Q8	7
3. Alita and John Haran ALF 1532 Flamingo Court Homestead, 33035	P9	8
4. Angeles Assisted Living Facility, Inc 29921 SW 151 Avenue Homestead, 33033	P8	8
5. B & B Home Care #1 20625 SW 114 Place Miami, 33033	15	6
6. Bel Aire Retirement Home 9955 SW 196 Street Homestead 33030	15	5
7. Bel Aire 8830 Carribean Blvd. Miami, 33157	A15	5
8. Belen Sweet Home ALF 11825 SW 206 th Street Miami, 33177	15	6
9. Bella Luna Retirement Home, Inc. 18700 SW 93rd Court Miami, 33157	A15	5
11. Bertha Elderly Care 9760 Memorial Road Miami, 33157	15	5
12. Bertha Elderly Care #2 10411 SW 198 th Street Miami, 33157	15	5
14. Blue Point Home Care 21910 SW 97 Court Miami, 33190	A10	5
15. Bright Happy Home, Inc 931 NE 17th Terrace Homestead, 33033	P9	8
16. Brookwood Gardens Convalescent Home 1990 South Canal Drive Homestead, 33035	P8	8
17. Caribbean Assisted Living Facility 9860 Caribbean Blvd Miami, 33189	15	5

Appendix II

TURKEY POINT NUCLEAR POWER PLANT SITE PLAN

18.	Cutler Bay Family Care, Inc 19431 Franjo Road Cutler Bay, 33157	15	5
19.	Cutler Bay Village 10425 SW 212th ST Miami, 33189	A10	5
20.	Del Real Home Care 13071 SW 260th Terrace Homestead, 33032	Q8	6
21.	Diaz Home Care ALF 13481 SW 268th Terrace Homestead, 33032	Q8	4
22.	Diaz Home Care ALF II, Inc 12211 SW 268th ST Homestead, 33032	R7	6
23.	Duran Home Care 26775 SW 129th Avenue Homestead, 33032	Q8	6
24.	East Ridge Retirement Village 19301 SW 87th Avenue Miami, 33157	15	5
25.	El Viejo Sol 4163 NE 16TH St Homestead, 33033	Q7	8
26.	Emanuel Adult ALF, Inc. 14950 Leisure DR Homestead, 33033	Q8	8
27.	Genesis Care Center Corp. 8395 SW 187 Terrace Miami, 33157	15	5
28.	God Is First ALF 11316 SW 246 Terrace Homestead, 33032	R8	6
29.	Good Time Home Care Corp. 8640 SW 185TH ST Cutler Bay, 33157	15	5
30.	Guardian Angel ALF 10265 Nicaragua Drive Cutler Bay, 33189	A10	5
31.	Harmony Family Home 9245 SW 208 Terrace Miami, 33189	A10	5
32.	HealthSouth Rehabilitation Hospital 20601 Old Cutler Road Miami, 33189	A10	5
33.	HealthSouth Rehabilitation Hospital of Miami 20601 Old Cutler Road Miami, 33189	A10	5

Appendix II

TURKEY POINT NUCLEAR POWER PLANT SITE PLAN

34.	Heaven Assisted Living Facility, Inc. 30136 SW 148 Place Homestead, 33033	P8	8
35.	Home Sweet Home 20700 SW 122nd Ave. Miami, 33177	R15	6
36.	Homestead Adult Day Care Center 653 SW 4 th Street Homestead, 33030	15	8
37.	Homestead Behavioral Clinic/Adult Day Care 654 NE 9 th Place Homestead, 33030	P10	8
38.	Homestead Hospital 975 Baptist Way Homestead, 33033	P8	8
39.	Homestead Manor 1330 NW 1 st Avenue Homestead, 33030	P10	8
40.	IFA Lola ALF, Inc 12230 SW 220 th Street Miami, 33170	R10	6
41.	Ive Home 20020 SW 113 Place Miami, 33189	15	6
42.	Ive Home II ALF 22636 SW 125 th Avenue Miami, 33170	R10	6
43.	Jackson Memorial Perdue Medical Center 19590 Old Cutler Road Miami, 33157	15	5
44.	Kayleen and Denis Care 15700 SW 296 th Street Homestead, 33033	P9	8
45.	Kenneth Home Care 10051 Haitian Drive Miami, 33189	A10	5
46.	Krome Apartments-Sunrise Community Inc. 1102 N Krome Avenue Homestead, 33030	P10	8
47.	Leisure City Home Care 14785 Coolidge Lane Homestead, 33033	Q8	8
48.	Living Well #1 24151 SW 107 th Avenue Homestead, 33032	R8	6
49.	Living Well #2 21280 Old Cutler Road Cutler Bay, 33189	A10	5
50.	Loreto Homes, Inc	15	8

Appendix II

TURKEY POINT NUCLEAR POWER PLANT SITE PLAN

	770 NW 9 th Court Homestead, 33030		
51.	M & J Quality Home Care, LLC 13231 SW 278 th Terrace Homestead, 33032	Q8	4
52.	Margreg Facilities 12412 SW 213 Terrace Miami, 33177	15	6
53.	Maria Home Care 14615 SW 288 th Street Miami, 33033	Q8	7
54.	Marlin Retirement ALF 20610 Marlin Road Cutler Bay, 33189	A10	5
55.	MD ALF 15735 SW 303 Terrace Homestead, 33033	P9	8
56.	Meadow Wood Homes 25799 SW 122 nd Place Miami, 33032	R8	6
57.	Merline's Place 28412 SW 135th Avenue Homestead, 33033	Q7	4
58.	Mi Renacer ALF 1305 SE 7th Street Homestead, 33033	P9	8
59.	Mother Golden Years II 29332 SW 143rd Court Homestead, 33033	Q8	8
60.	Mother Golden Years III 13621 SW 281st Terrace Homestead, 33033	Q8	4
61.	My Sweet Home 11312 SW 203rd Terrace Miami, 33189	R15	6
62.	Naranja Group Home 15190 SW 272 nd Street Naranja, 33032	Q9	7
63.	New Horizon Assisted Living 30110 SW 145 th Court Homestead, 33033	P8	8
64.	Nuestro Hogar 9384 SW 184TH TER Miami, 33157	15	5
65.	Old Cutler Retirement Home 21640 Old Cutler Road Miami, 33190	A10	5

Appendix II

TURKEY POINT NUCLEAR POWER PLANT SITE PLAN

66.	Palace Gardens - North 1351 North Krome Avenue Homestead, 33030	P10	8
67.	Paradise Villa ALF 21164 SW 92nd Place Cutler Bay, 33189	A10	5
68.	Paula's Mansion ALF 13206 SW 218th Terrace Miami, 33170	15	6
69.	Peace and Care South ALF 24027 SW 111 Avenue Miami, 33032	R9	6
70.	Pina & Fuerte Adult Care 14935 SW 297 St Homestead, 33033	P8	8
71.	Precious Moments ALF, Inc 9480 Dana Road Cutler Bay, 33157	15	5
72.	Rafaela's Home 20560 SW 113th Road Miami, 33189	15	6
73.	Rick and Dauvy ALF, Inc. 23120 SW 124th Avenue Miami, 33170	R10	6
74.	Riverside Senior Care 22712 SW 103 rd Court Miami, 33190	A9	5
75.	Rodeck ALF 9700 Montego Bay Drive Miami, 33189	A10	5
76.	San Rafael Home Health 13373 SW 283 rd Street Homestead, 33033	Q7	4
77.	Sara Home Care 29100 SW 172nd Avenue Miami, 33030	P10	8
78.	Serenity Adult Home Care Service 15401 SW 277 th Street Homestead, 33032	Q9	7
79.	Sol Radiante Inc. 221 NE 15 th Street Homestead, 33030	P10	8
80.	South Dade Adult Care Center 19590 Old Cutler Road Miami, 33157	15	5
81.	South Dade Homeless Asst. Health Center 28205 SW 125 th Avenue Homestead, 33033	Q7	4
82.	South Florida ALF	P9	8

Appendix II

TURKEY POINT NUCLEAR POWER PLANT SITE PLAN

	15994 SW 303 rd Terrace Homestead, 33033		
83.	St. Mary Adult Care #2 11271 SW 229 th Terrace Miami, 33170	R9	6
84.	Suany's Home 20411 SW 115 th Road Miami, 33189	15	6
85.	Swankridge Care Center 122 NW 7th Street Homestead, 33030	P10	8
86.	Swankridge Care Center II 120 NW 17th street Homestead, 33030	P15	8
87.	Sweet Mansion ALF, Inc 16925 SW 300TH ST Homestead, 33030	P10	8
88.	Sylvia's Senior Home II 23025 SW 120th Avenue Miami, 33170	R10	6
89.	The Gill Family Home Corp. 15201 SW 297 th Street Homestead, 33033	P8	8
90.	The Haven Retirement Home, Inc. 10601 Caribbean Boulevard Miami, 33189	A15	5
91.	Vereda Nueva, Inc. 12412 SW 215th Lane Miami, 33177	15	6
92.	Vicky's ALF 12438 SW 266 th Lane Homestead, 33032	R8	6
93.	Welcome Home ALF Corp. 8950 SW 215 th Terrace Cutler Bay, 33189	A10	5
94.	Whispering Pines Home Care, Inc 8830 SW 196 th Drive Cutler Bay, 33157	15	5