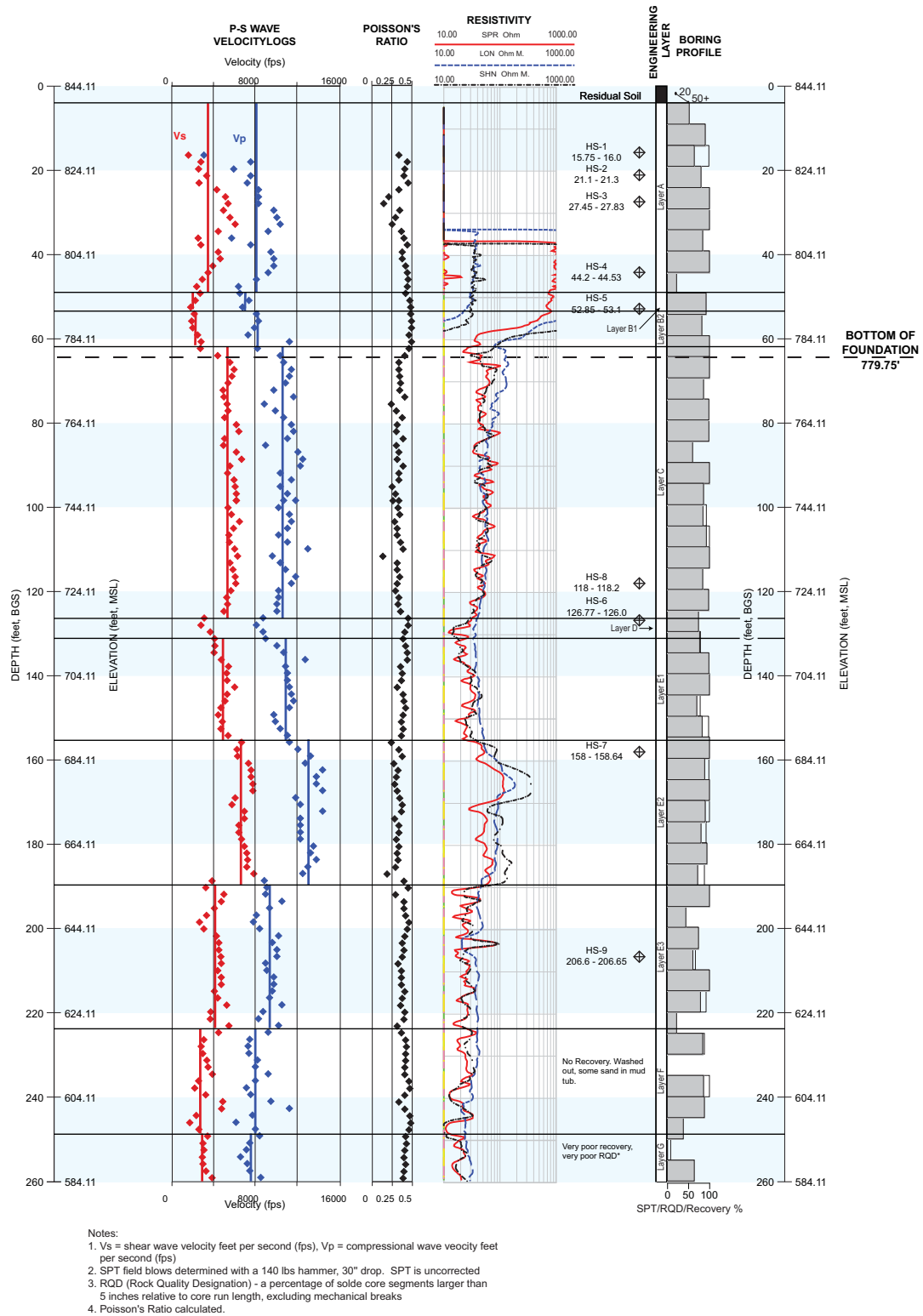
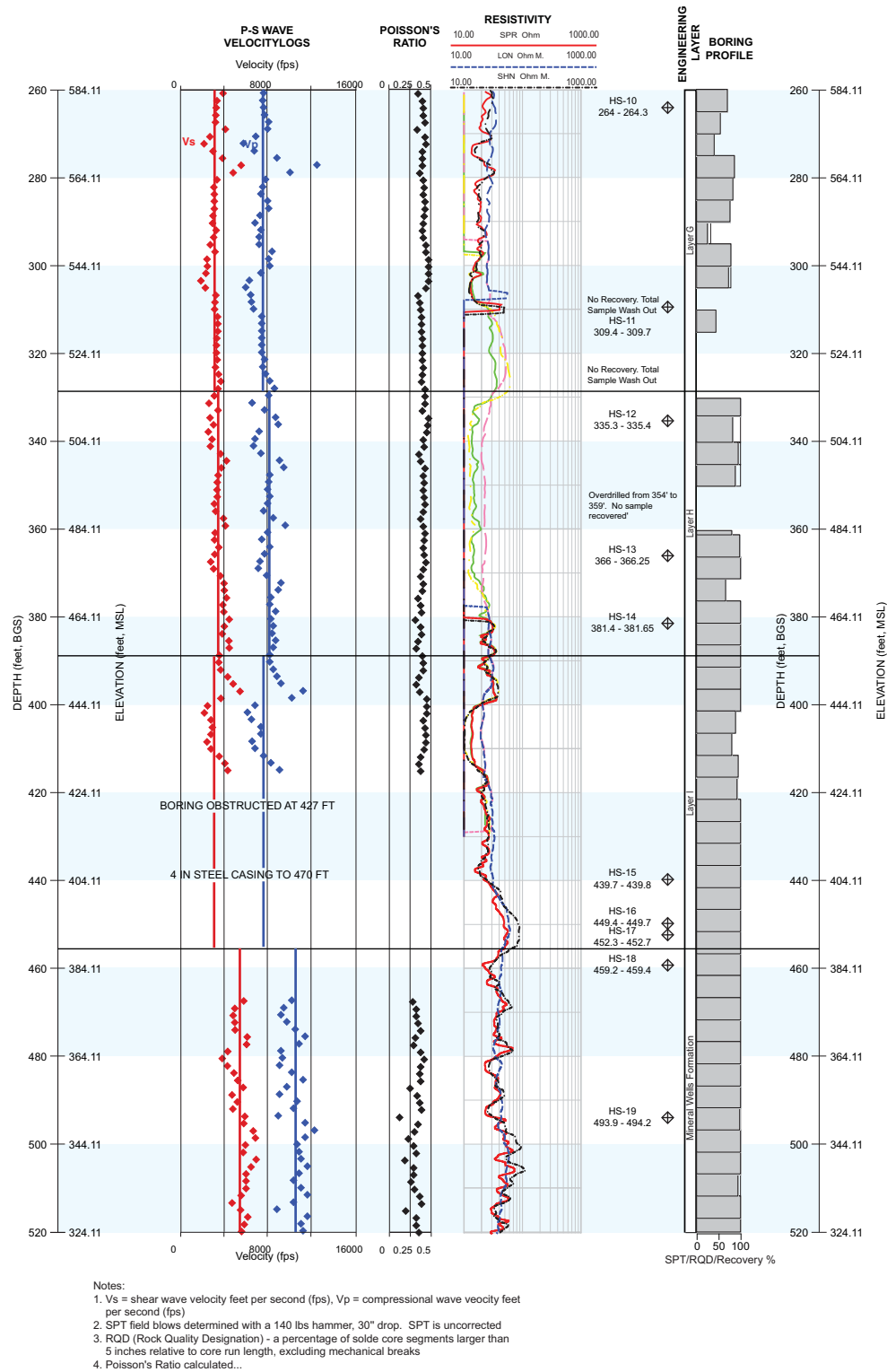


# **Comanche Peak Nuclear Power Plant, Units 3 & 4** **COL Application** **Part 2, FSAR**



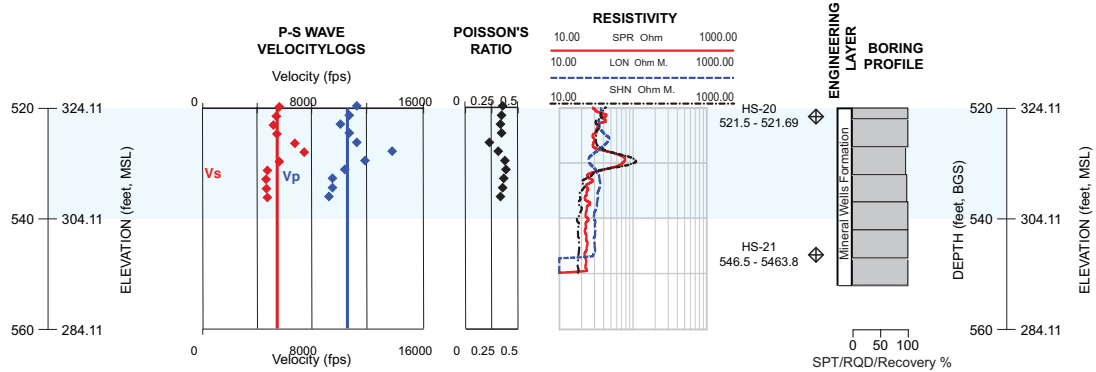
**Figure 2.5.4-208 Boring In Situ Test Summary Log, B-1012 (Sheet 1 of 3)**

# **Comanche Peak Nuclear Power Plant, Units 3 & 4** **COL Application** **Part 2, FSAR**



**Figure 2.5.4-208 Boring In Situ Test Summary Log, B-1012 (Sheet 2 of 3)**

# **Comanche Peak Nuclear Power Plant, Units 3 & 4** **COL Application** **Part 2, FSAR**



- Notes:
1. Vs = shear wave velocity feet per second (fps), Vp = compressional wave velocity feet per second (fps)
  2. SPT field blows determined with a 140 lbs hammer, 30" drop. SPT is uncorrected
  3. RQD (Rock Quality Designation) - a percentage of solid core segments larger than 5 inches relative to core run length, excluding mechanical breaks
  4. Poisson's Ratio calculated.

**Figure 2.5.4-208 Boring In Situ Test Summary Log, B-1012 (Sheet 3 of 3)**