

Comanche Peak Nuclear Power Plant, Units 3 & 4
COL Application
Part 2, FSAR

Comanche Peak COL - CPUP FIRS1_COV50 Analysis
Spectral Acceleration (g) at depth(ft)= 0.0 - outcrop (DCD TH
Duration) (Unsaturated granular fill)

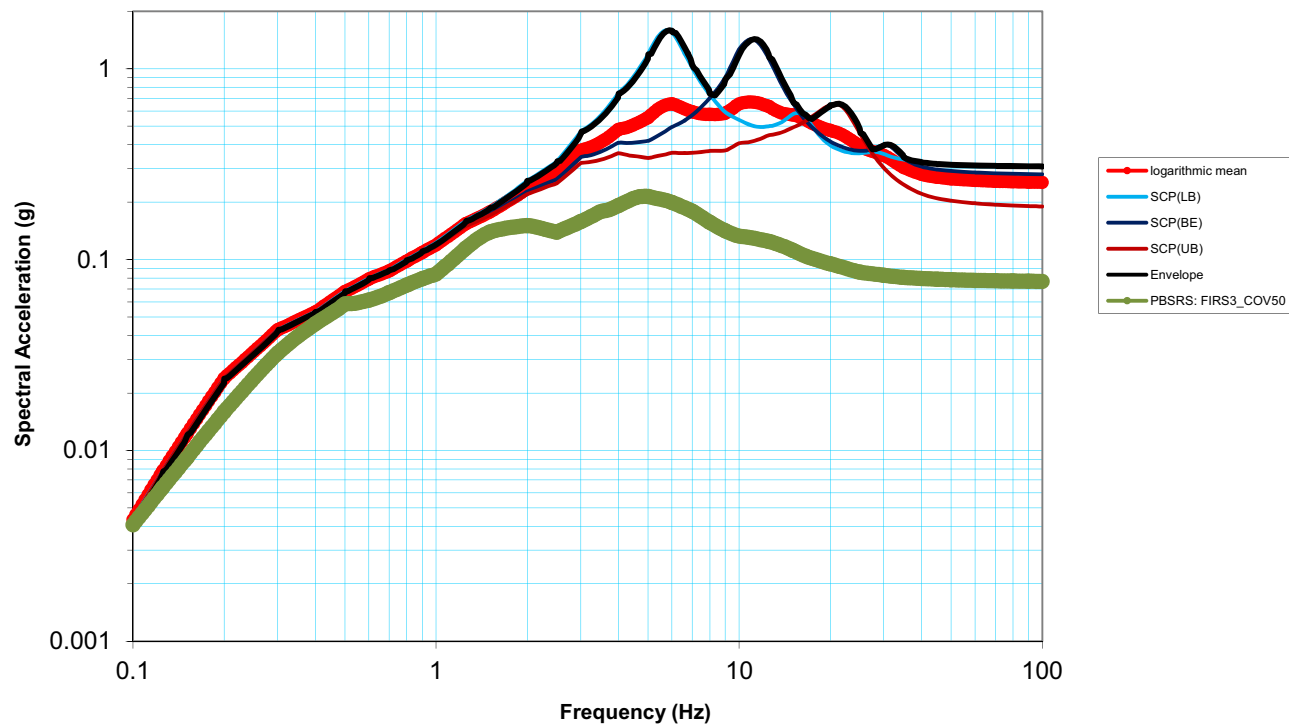


Figure 2.5.2-273 Comparison of envelope of spectral accelerations of the surface response spectra for LB, BE, and UB and the corresponding PBSRS, FIRS1_COV50 (Equivalent to FIRS2_COV50), CPUP, DCD time history strong motion duration, unsaturated granular fill, 5% damping