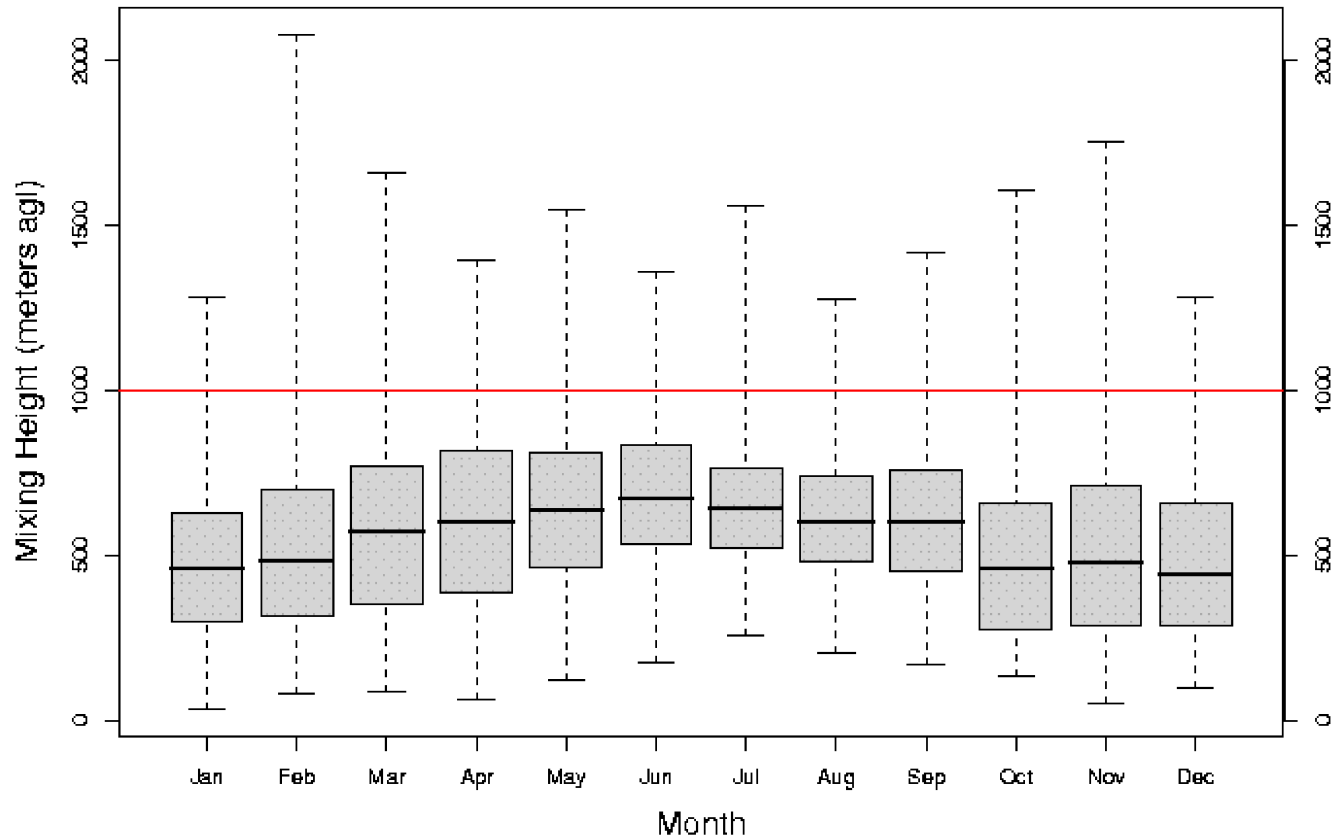


**Comanche Peak Nuclear Power Plant, Units 3 & 4  
COL Application  
Part 2, FSAR**

**AM – N 32°18.75' W 97°46.25'  
Daily Variability by Month**



Reference: Ventilation Climate Information System, USDOJ-USDA Joint Fire Science Program.  
<http://web.airfire.org/vcis>, accessed 9/10/2007.

**Figure 2.3-240 Annual Morning Mixing Height at CPNPP**