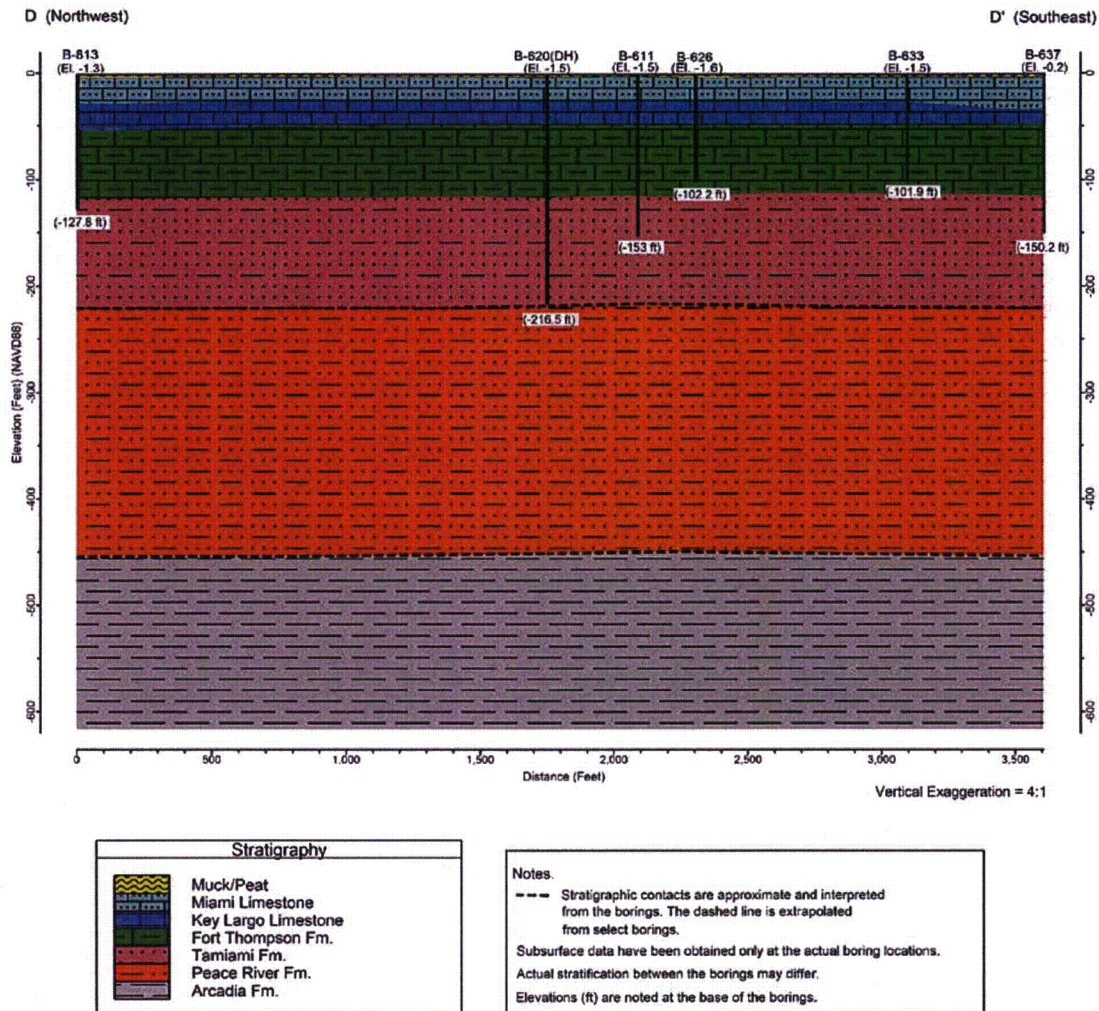


**Figure 2.5AA-201 Cross-Section D-D' (Vertical Exaggeration = 4:1)**

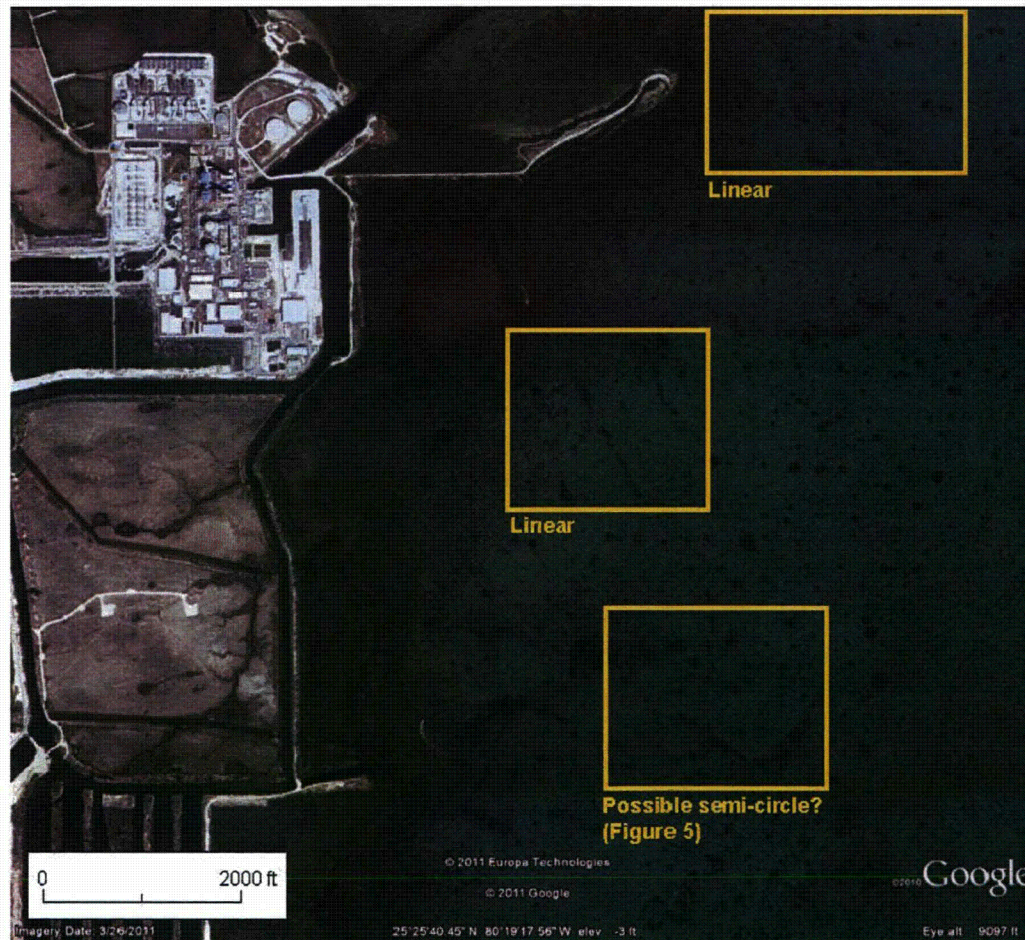
This figure appears in FSAR Section 2.5.1 as Figure 2.5.1-389





Proposed Turkey Point Units 6 and 7  
Docket Nos. 52-040 and 52-041  
FPL Response to NRC RAI No. 02.05.01-17 (eRAI 6024)  
L-2013-236 Attachment 15 Page 97 of 112

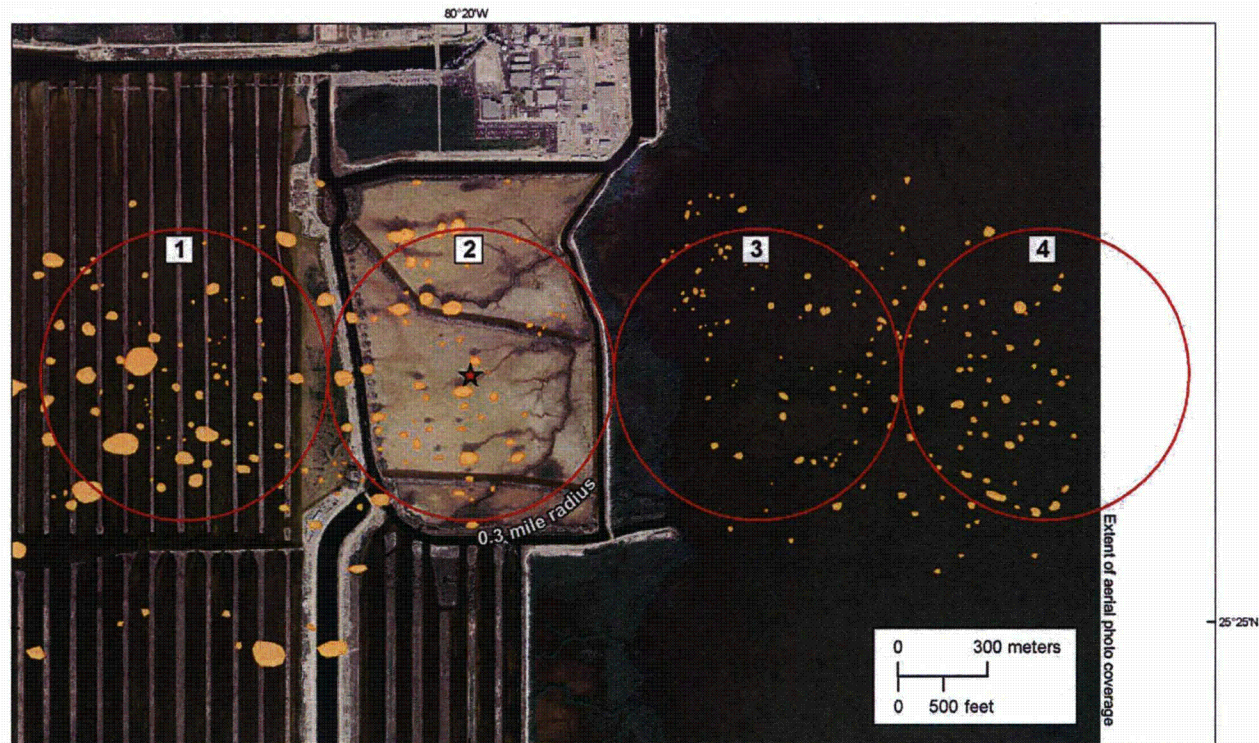
**Figure 2.5AA-202 Google Earth Image of Biscayne Bay Adjacent to the Turkey Point Units 6 & 7 Site Showing Possible Alignments of Vegetated Patches**



**Source: Reference 2.5AA-202**



**Figure 2.5AA-203 Areas Evaluated for Size and Density of Vegetated Patches**

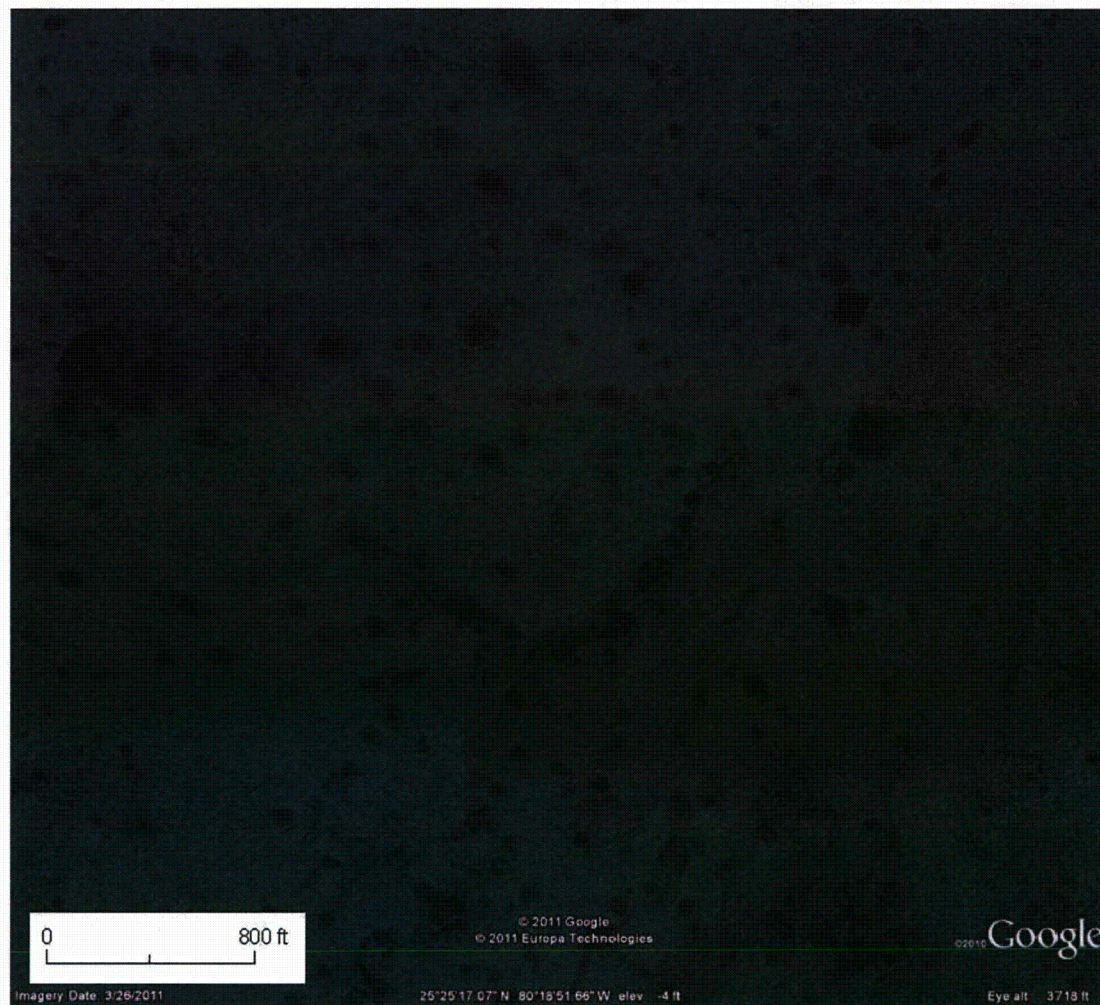


**Source: References 2.5.3-233 and 2.5.3-207**



Proposed Turkey Point Units 6 and 7  
Docket Nos. 52-040 and 52-041  
FPL Response to NRC RAI No. 02.05.01-17 (eRAI 6024)  
L-2013-236 Attachment 15 Page 99 of 112

**Figure 2.5AA-204 Close-Up View of Potential Semicircular Arrangement of Vegetated Patches**



**Source: Reference 2.5AA-203**



Proposed Turkey Point Units 6 and 7  
Docket Nos. 52-040 and 52-041  
FPL Response to NRC RAI No. 02.05.01-17 (eRAI 6024)  
L-2013-236 Attachment 15 Page 100 of 1132

**Figure 2.5AA-205 Google Earth Image of the Sinkhole Reported by Shinn et al.**



**Source: Reference 2.5AA-204**



Proposed Turkey Point Units 6 and 7  
Docket Nos. 52-040 and 52-041  
FPL Response to NRC RAI No. 02.05.01-17 (eRAI 6024)  
L-2013-236 Attachment 15 Page 101 of 112

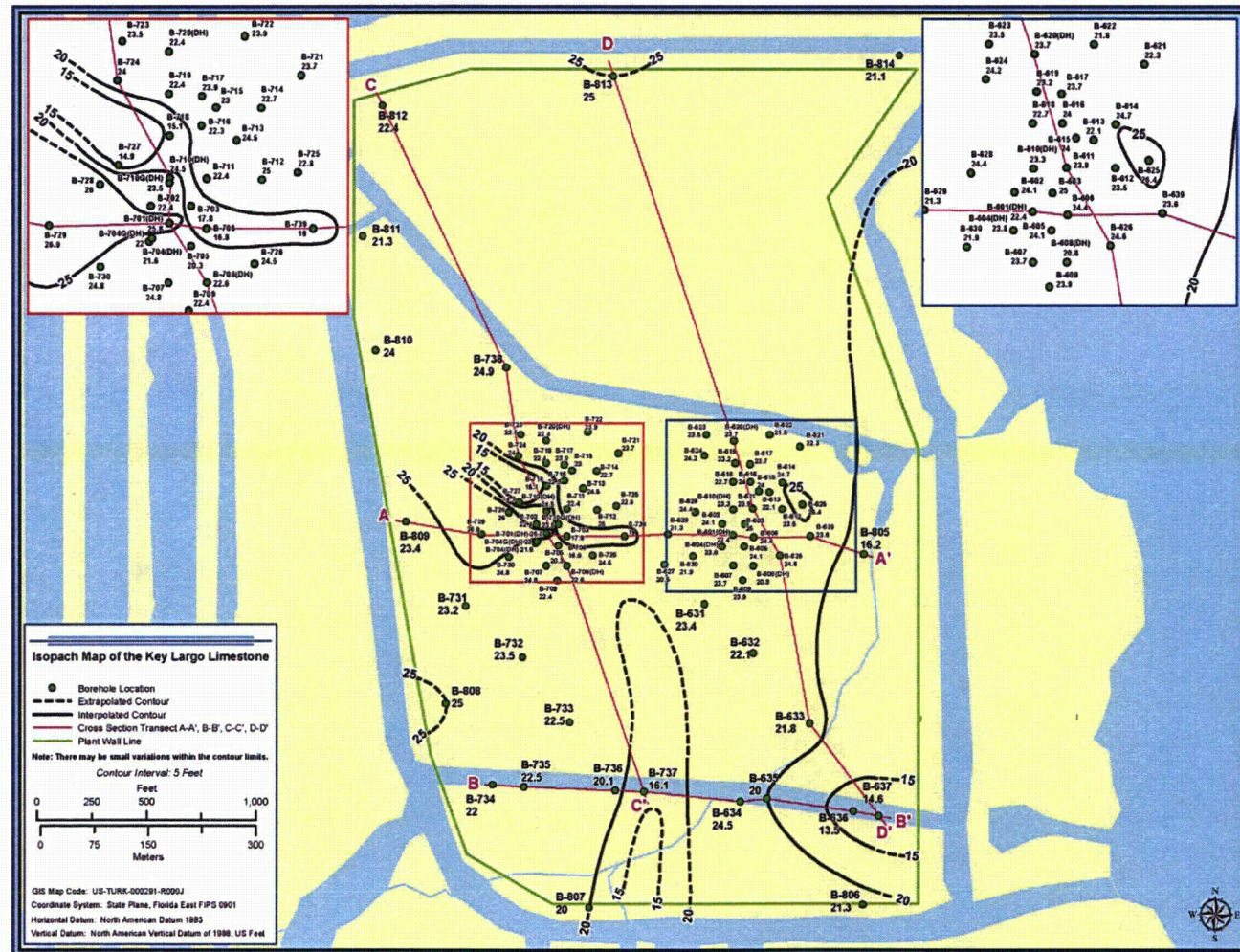
**Figure 2.5AA-206 Aerial Photo (1994) of Biscayne Bay Adjacent to the Turkey Point Units 6 & 7 Site**



**Source: Reference 2.5AA-205**

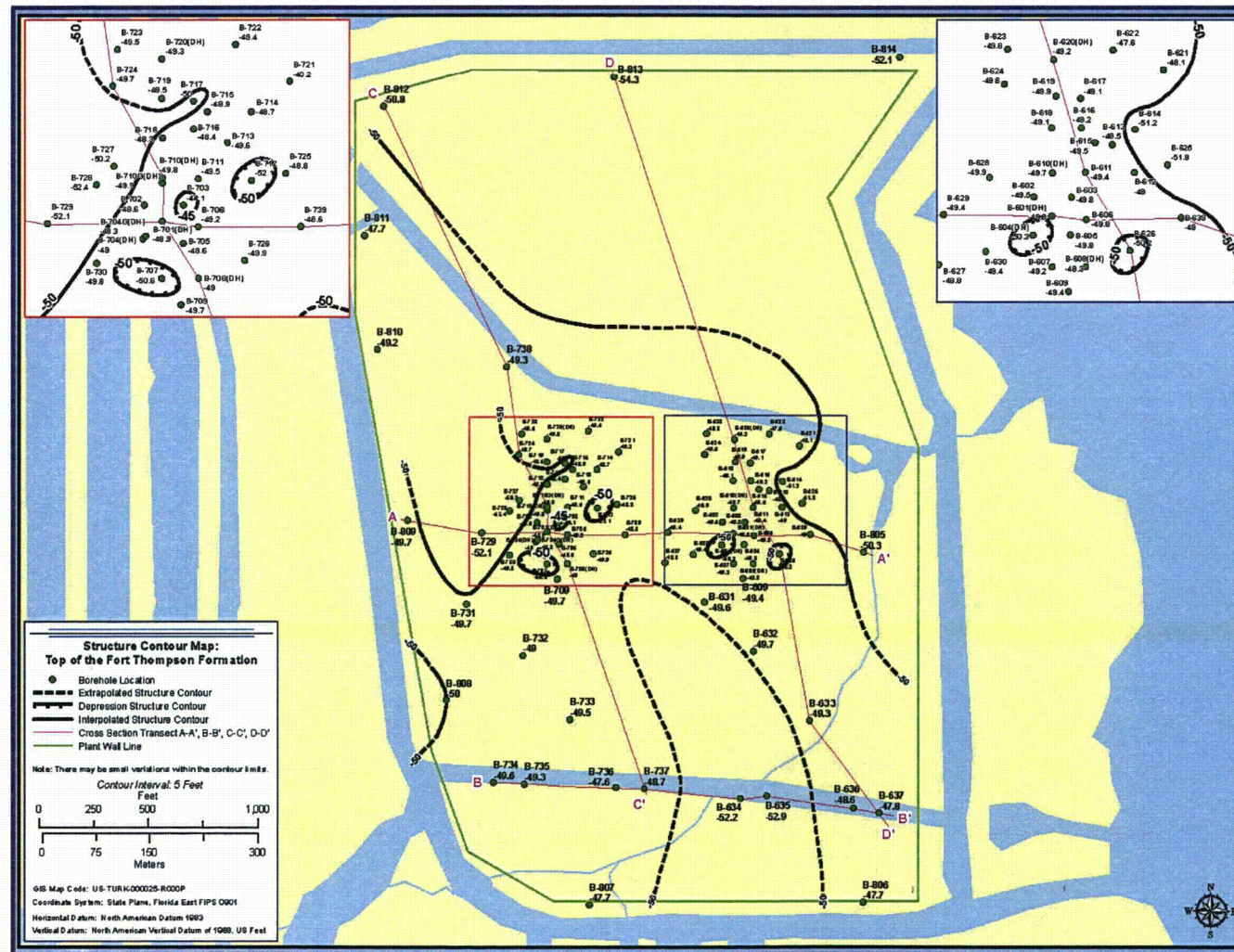


**Figure 2.5AA-207 Isopach Map of the Key Largo Limestone**  
This figure appears in FSAR Section 2.5.1 as Figure 2.5.1-342



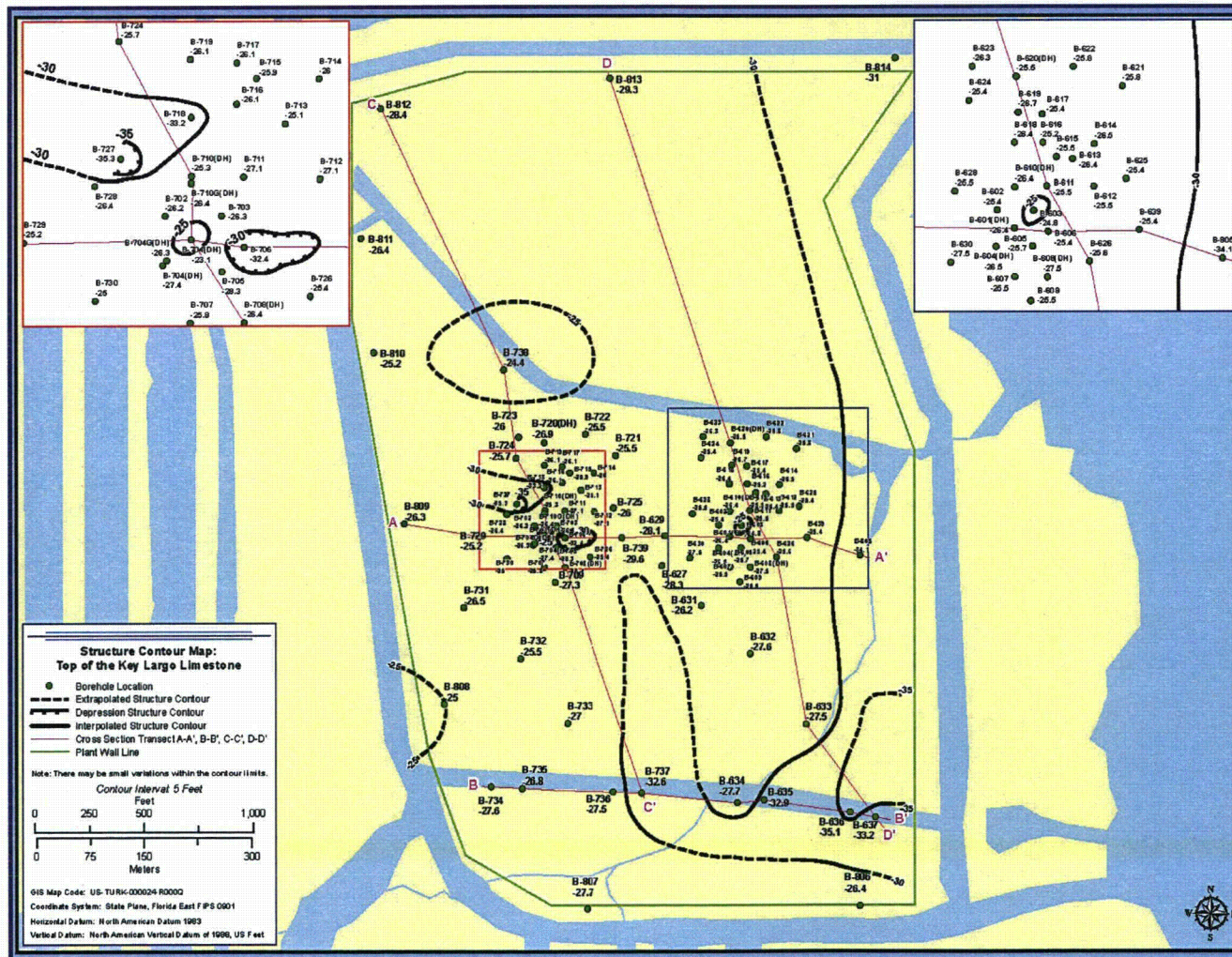


**Figure 2.5AA-208 Structure Contour Map of the Top of the Fort Thompson Formation**  
This figure appears in FSAR Section 2.5.1 as Figure 2.5.1-343



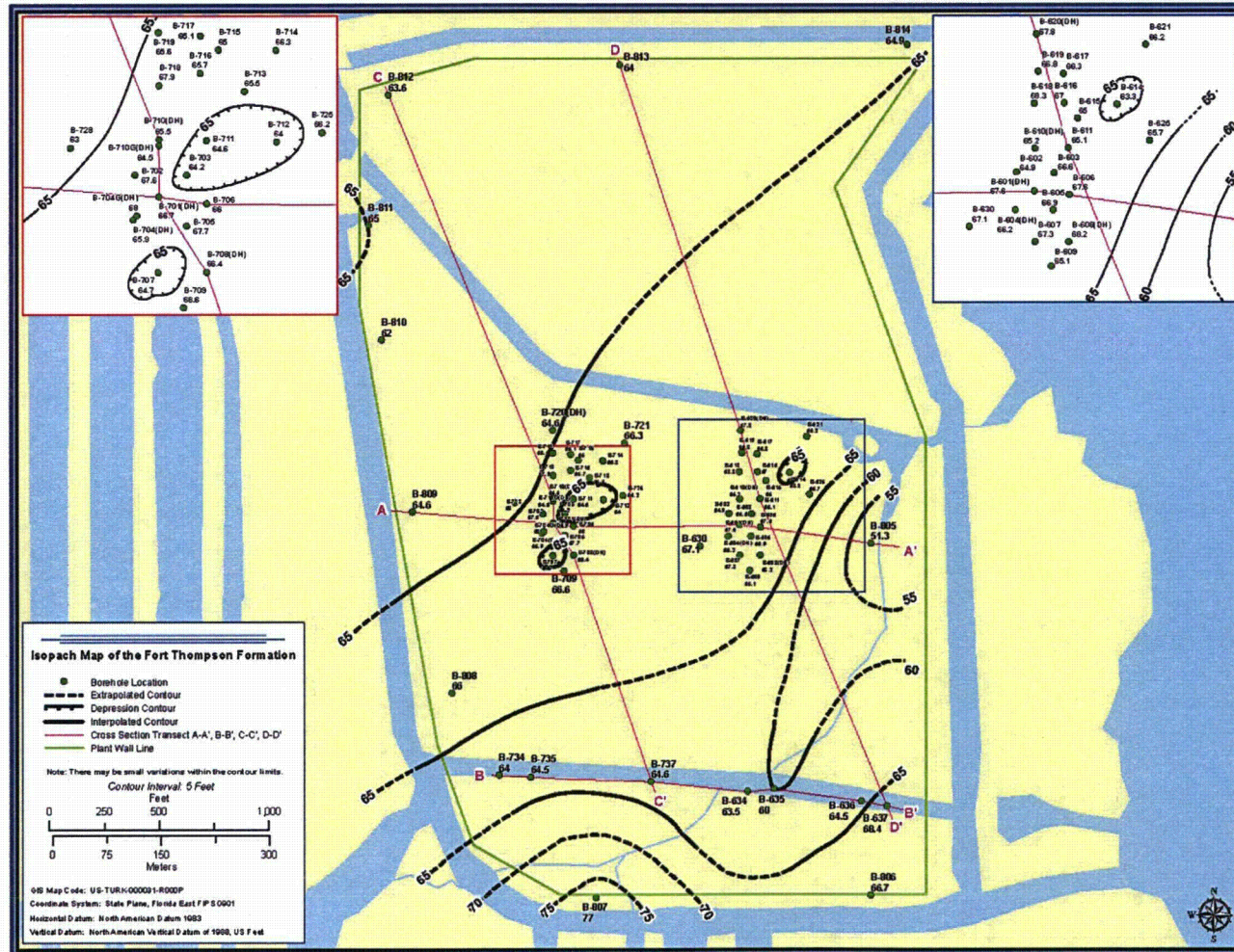


**Figure 2.5AA-209. Structure Contour Map of the Top of the Key Largo Limestone**  
This figure appears in FSAR Section 2.5.1 as Figure 2.5.1-349



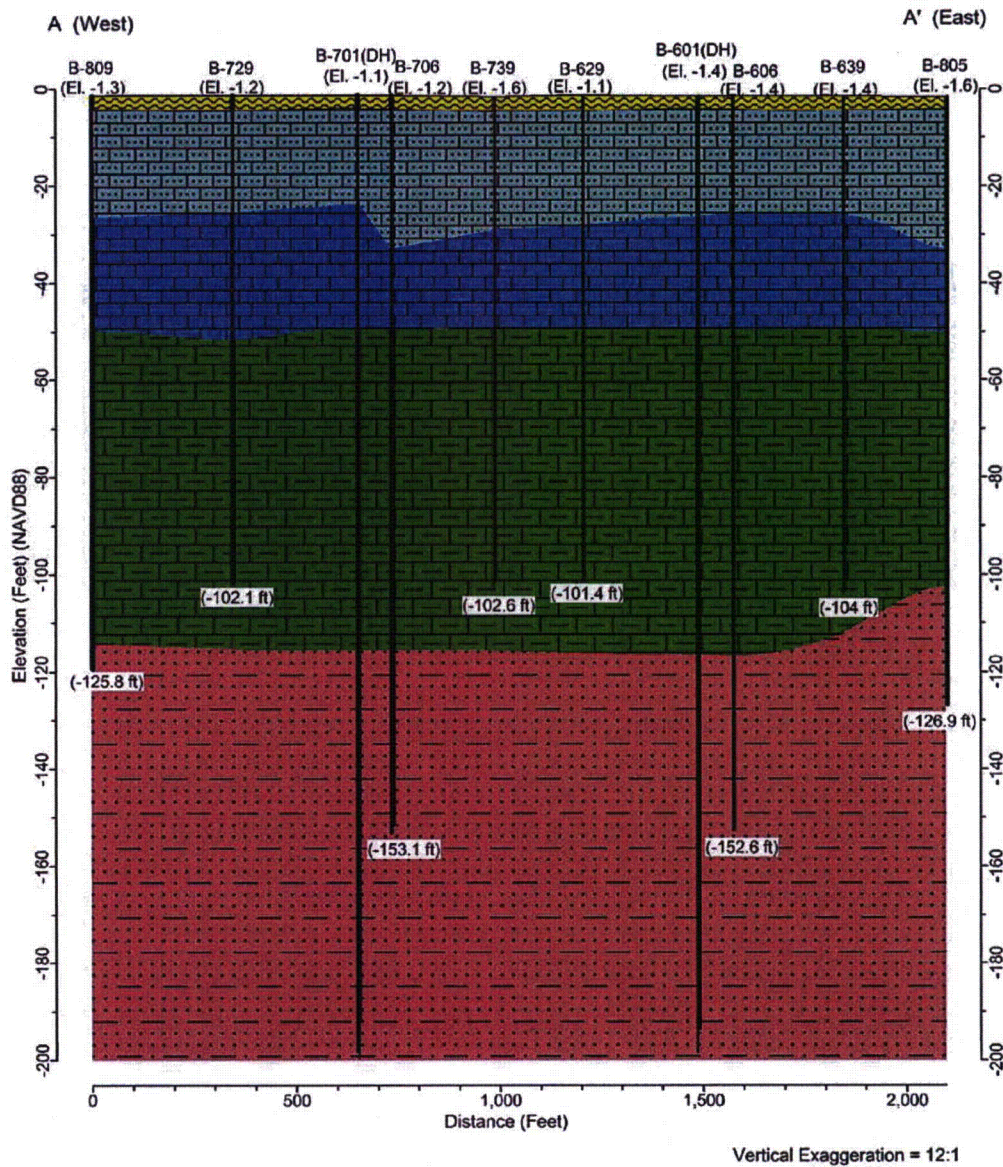


**Figure 2.5AA-210. Isopach Map of the Fort Thompson Formation**  
This figure appears in FSAR Section 2.5.1 as Figure 2.5.1-344





**Figure 2.5AA-211. Cross-Section A-A' Truncated (Vertical Exaggeration = 12:1)**  
This figure appears in FSAR Section 2.5.1 as Figure 2.5.1-338



Stratigraphy	
	Muck/Peat
	Miami Limestone
	Key Largo Limestone
	Fort Thompson Fm.
	Tamiami Fm.
	Peace River Fm.
	Arcadia Fm.

**Notes.**

Stratigraphic contacts are approximate and interpolated from the borings.

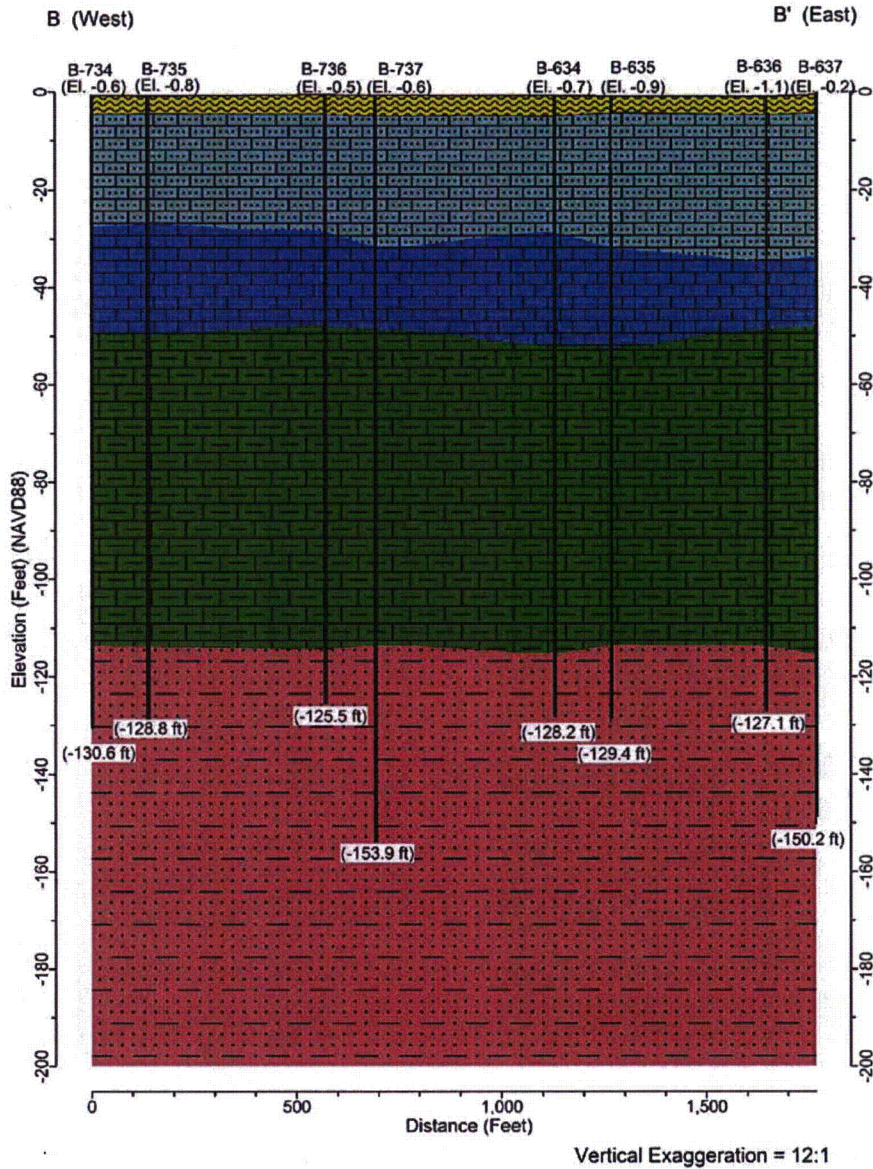
Subsurface data have been obtained only at the actual boring locations.

Actual stratification between the borings may differ.

Elevations (ft) are noted at the base of each boring.



**Figure 2.5AA-212. Cross-Section B-B' Truncated (Vertical Exaggeration = 12:1)**  
This figure appears in FSAR Section 2.5.1 as Figure 2.5.1-339



Stratigraphy	
	Muck/Peat
	Miami Limestone
	Key Largo Limestone
	Fort Thompson Fm.
	Tamiami Fm.
	Peace River Fm.
	Arcadia Fm.

**Notes.**

Stratigraphic contacts are approximate and interpolated from the borings.

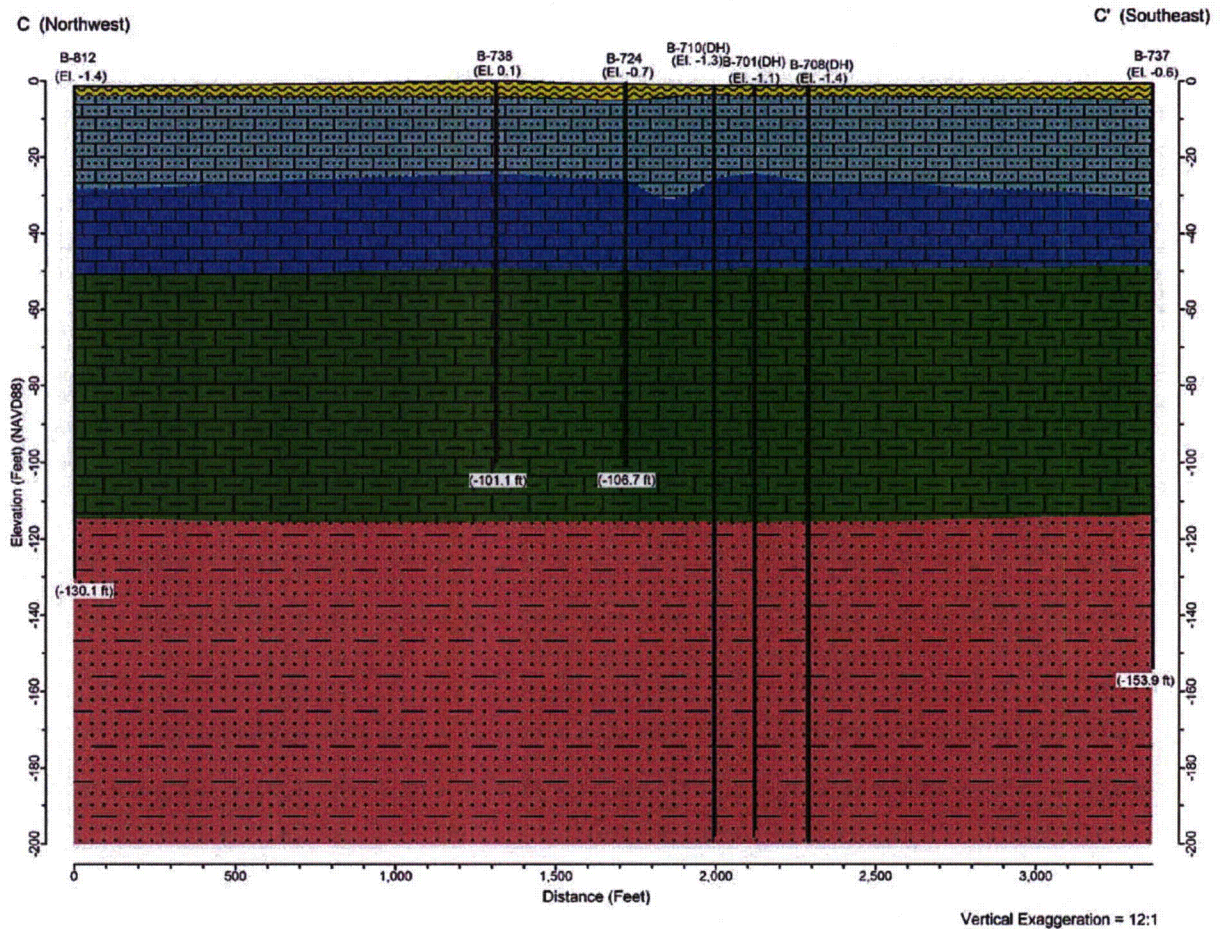
Subsurface data have been obtained only at the actual boring locations.

Actual stratification between the borings may differ.

Elevations (ft) are noted at the base of each boring.



**Figure 2.5AA-213. Cross-Section C-C' Truncated (Vertical Exaggeration = 12:1)**  
This figure appears in FSAR Section 2.5.1 as Figure 2.5.1-340

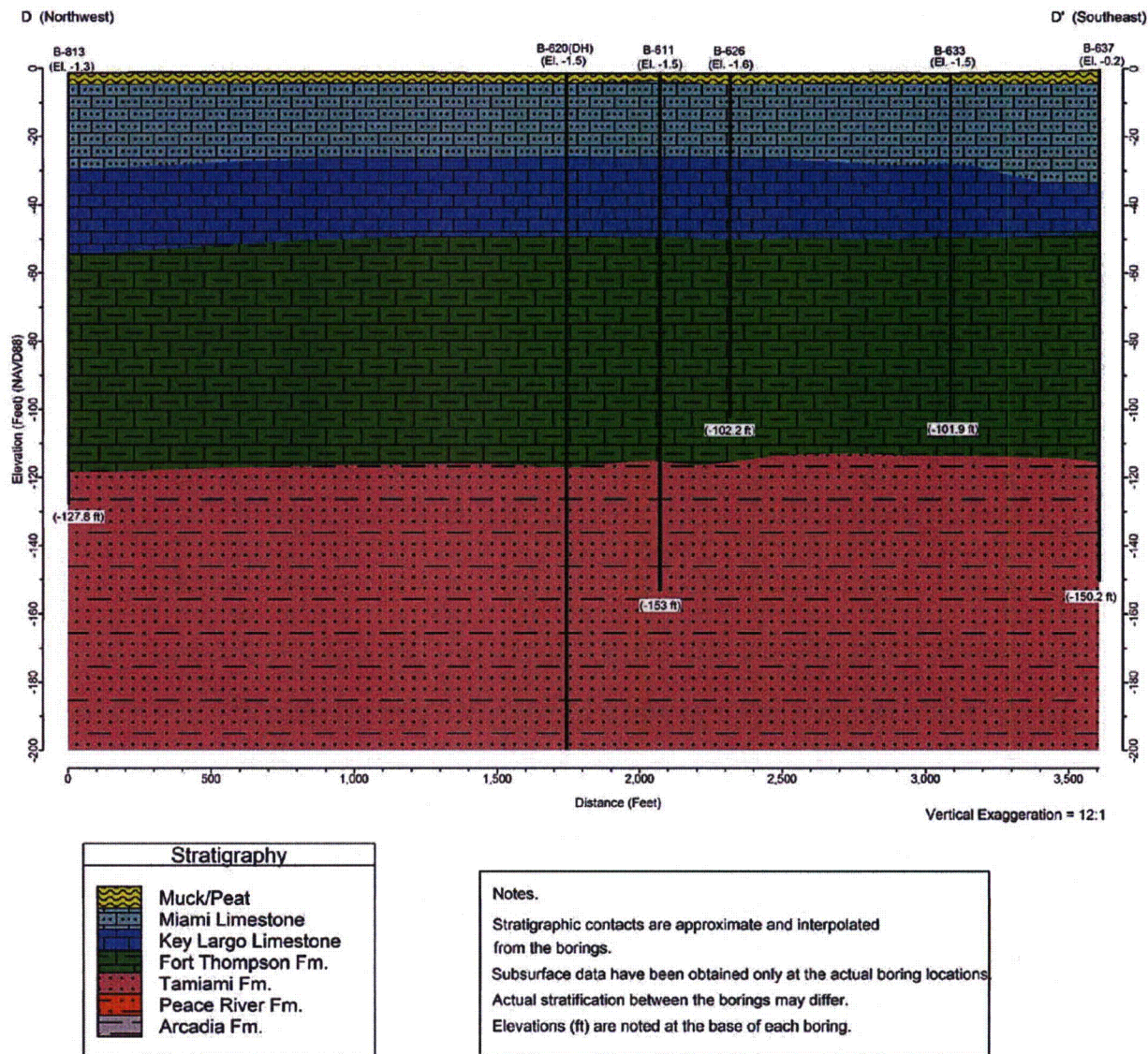


Stratigraphy	
	Muck/Peat
	Miami Limestone
	Key Largo Limestone
	Fort Thompson Fm.
	Tamiami Fm.
	Peace River Fm.
	Arcadia Fm.

**Notes.**  
Stratigraphic contacts are approximate and interpolated from the borings.  
Subsurface data have been obtained only at the actual boring locations.  
Actual stratification between the borings may differ.  
Elevations (ft) are noted at the base of each boring.

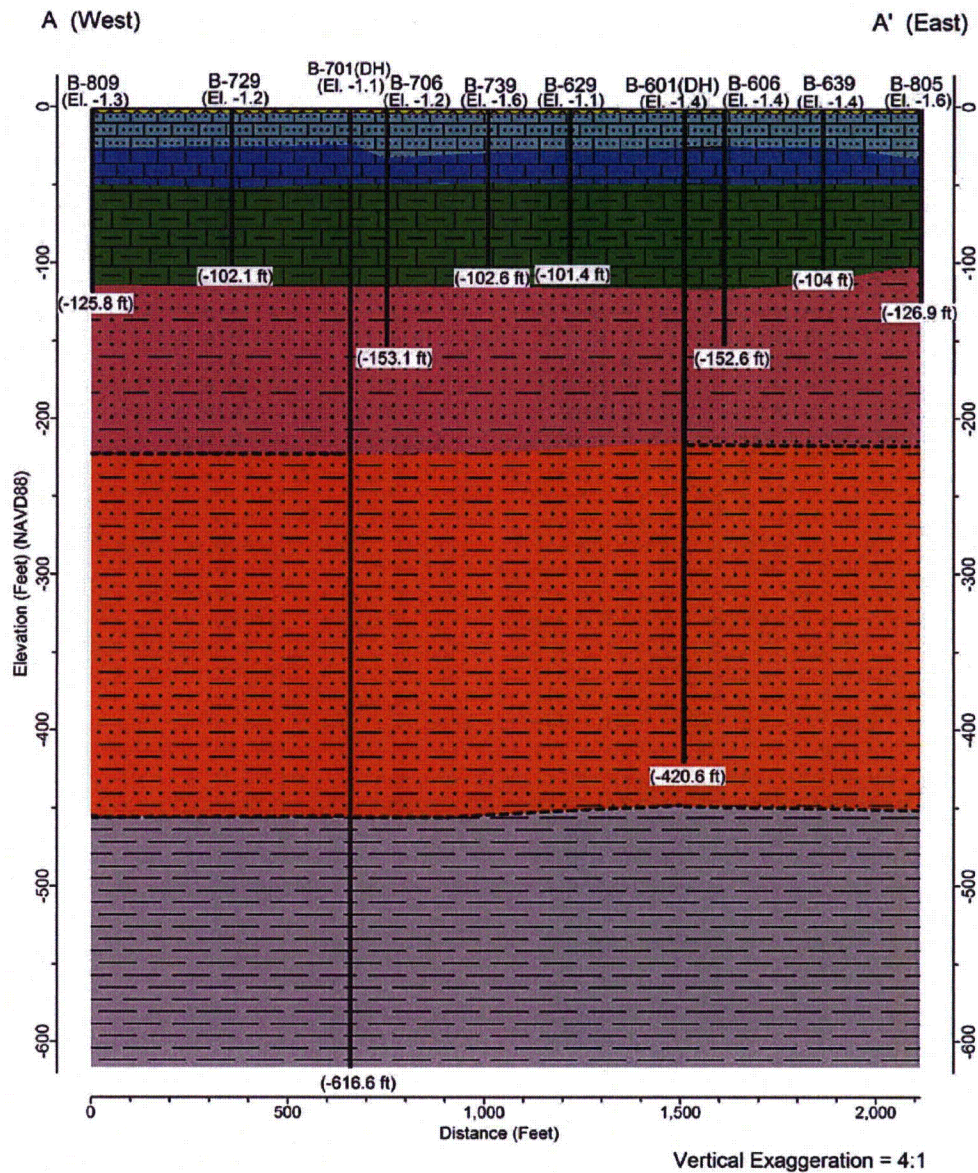


**Figure 2.5AA-214. Cross-Section D-D' Truncated' (Vertical Exaggeration = 12:1)**  
This figure appears in FSAR Section 2.5.1 as Figure 2.5.1-341





**Figure 2.5AA-215. Cross-Section A-A' (Vertical Exaggeration = 4:1)**  
This figure appears in FSAR Section 2.5.1 as Figure 2.5.1-386



Stratigraphy	
	Muck/Peat
	Miami Limestone
	Key Largo Limestone
	Fort Thompson Fm.
	Tamiami Fm.
	Peace River Fm.
	Arcadia Fm.

**Notes.**

----- Stratigraphic contacts are approximate and interpolated from the borings. The dashed line is an extrapolated stratigraphic contact.

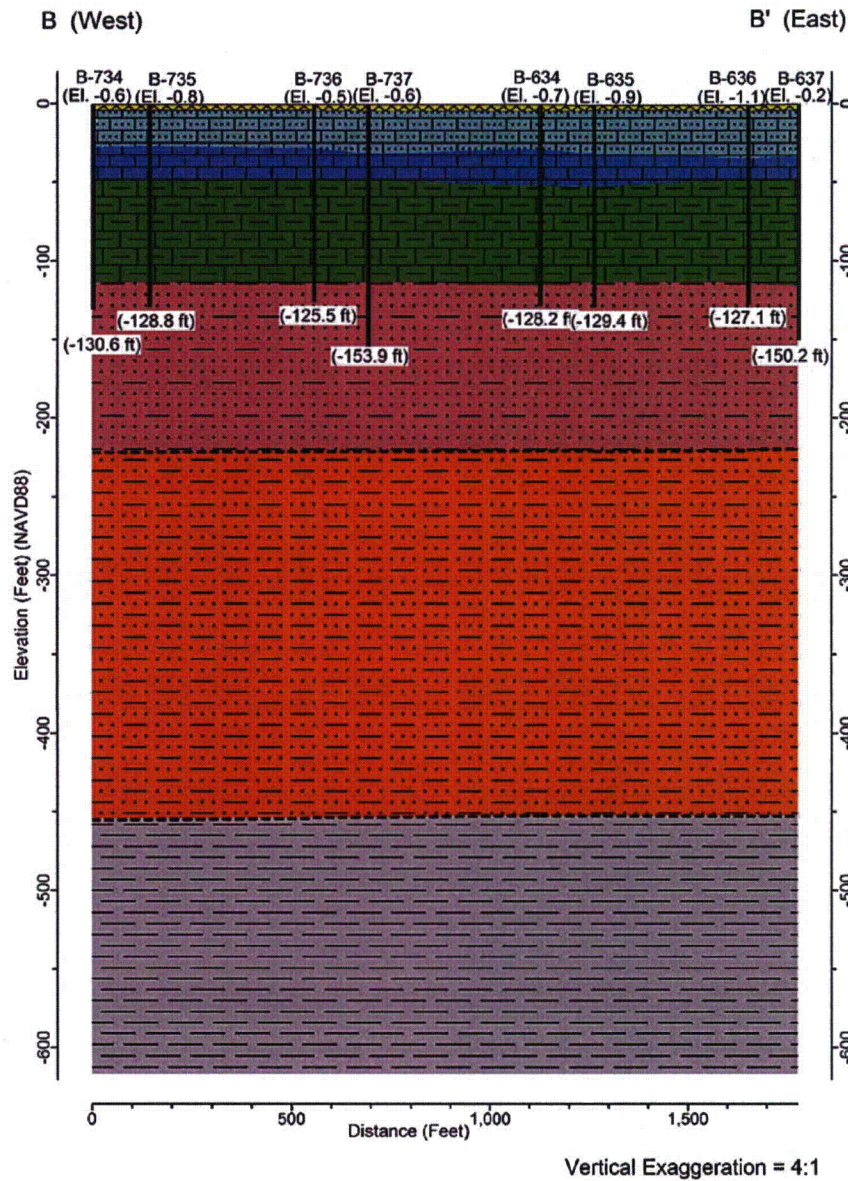
Subsurface data have been obtained only at the actual boring locations.

Actual stratification between the borings may differ.

Elevations (ft) are noted at the base of each boring.



**Figure 2.5AA-216. Cross-Section B-B' (Vertical Exaggeration = 4:1)**  
This figure appears in FSAR Section 2.5.1 as Figure 2.5.1-387



Stratigraphy	
	Muck/Peat
	Miami Limestone
	Key Largo Limestone
	Fort Thompson Fm.
	Tamiami Fm.
	Peace River Fm.
	Arcadia Fm.

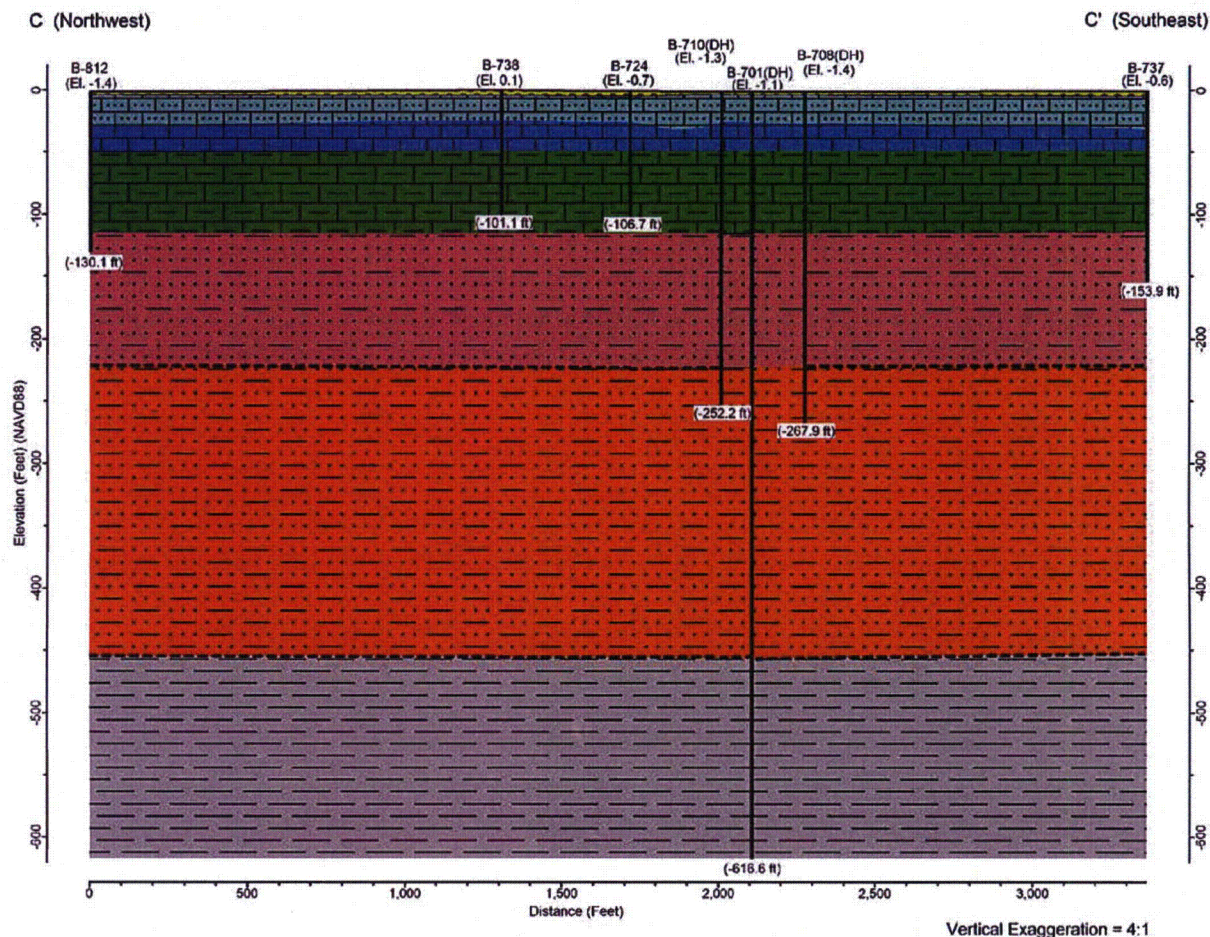
**Notes.**

--- Stratigraphic contacts are approximate and interpolated from the borings. The dashed line is an extrapolated stratigraphic contact.

Subsurface data have been obtained only at the actual boring locations. Actual stratification between the borings may differ. Elevations (ft) are noted at the base of each boring.



**Figure 2.5AA-217. Cross-Section C-C' (Vertical Exaggeration = 4:1)**  
This figure appears in FSAR Section 2.5.1 as Figure 2.5.1-388



**ASSOCIATED ENCLOSURES:**  
None