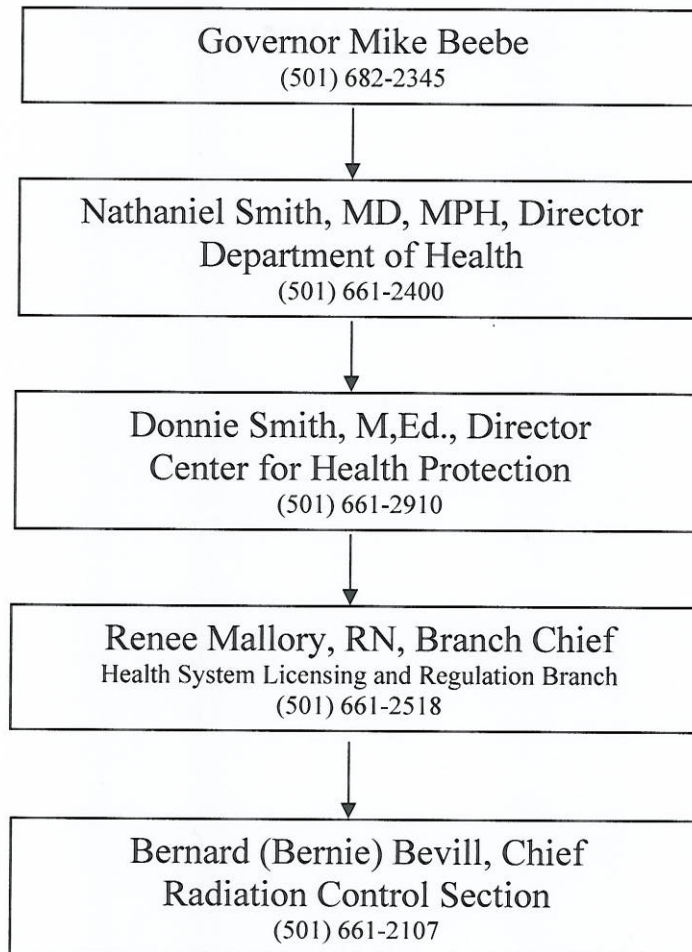


Organization Chart from Governor to Program Director



ARKANSAS DEPARTMENT OF HEALTH

Director and State Health Officer
Nathaniel Smith, MD, MPH

State Epidemiologist
Dirk Haselow, MD, PhD

Office of the General Counsel
Rick Hogan, JD, MPH, Chief General Counsel

Deputy State Health Officer and Chief Science Officer
Joe Bates, MD, MS

Deputy Director for Public Health Programs
Stephanie C. Williams, BSN, RNP

Deputy Director for Administration
Ann Purvis, JD

Minority Health and Health Disparities
Michelle Smith, PhD, MPH, Director

Health Communications and Marketing
Cathy Flanagan, MA, MPH, Director

Finance
Robert Brech, JD, Chief Financial Officer

Office of Governmental Affairs
Kathryn Hargis, MA, Policy Director

Human Resources and Professional Development
Xavier Heard, Director

Information Technology Services
Michael Kincaid, Chief Information Officer

Internal Audit
Bob Berry, CPA, Internal Audit Manager

Facilities Support Services
James Joiner, PE, Building Supply Manager

Center for Health Advancement
Nancy Jones, MD, MPH, Director
Mary Jones, MA, MPH, Deputy Director
Appathurai Balanuragan, MD, MPH, Assoc. Dir. for Science

Chronic Disease Branch
Alyssa Cover, M.Ed., CHES
Acting Branch Chief
Appathurai Balanuragan, MD, MPH
Medical Director

Family Health Branch
David Grimes, MD, MPH
Branch Chief

Nutrition WIC Branch
Susan Handford, MS, RD
Branch Chief

Office of Oral Health
Bryan Whitaker, DDS
Director

Tobacco Prevention and Cessation Program
Vacant
Branch Chief
Gary Wheeler, MD, MPS
Medical Director

Center for Health Protection
Dianne Smith, M.Ed., Director
Ryan Smith, Assoc. Dir. for Mgmt & Operations
William Mahon, MD, MPH, Assoc. Dir. for Science

Health System Licensing and Regulation Branch
Renee Mallory, RN
Branch Chief

Infectious Disease Branch
Gary Wheeler, MD, MPS
Branch Chief

Injury Prevention and Control Branch
William Temple, JD
Branch Chief

Pharmaco Services and Drug Control Branch
James Myatt, PD
Branch Chief

Preparedness and Emergency Response Branch
William Mason, MD, MPH
Branch Chief

Center for Local Public Health
Randy Lee, BSN, MPH, Director
Rick Sanders, Assoc. Dir. for Mgmt & Operations
Jennifer Dillman, MD, Assoc. Dir. for Science

Environmental Health Branch
Terry Paul, RS, CPH
Branch Chief

Hometown Health Support Services Branch
Andrea Ridgway, MS, RD
Branch Chief

In-Home Services Branch
Marcie Gibson, JD
Branch Chief

Local Public Health Offices Branch
Randy Lee, BSN, MPH
Branch Chief

Center for Public Health Practice
Joan Sauer, PhD, Director
Susan Wylie, Assoc. Dir. for Mgmt & Operations
Gordon Reeve, PhD, Assoc. Dir. for Science

Analytical Epidemiology Branch
Gordon Reeve, PhD
Branch Chief

Applied Epidemiology Branch
Shirley Louis, MS, CIH
Branch Chief and
Deputy State Epidemiologist

Health Statistics Branch
Paul Johnson, MSPH
Branch Chief

Office of Performance Improvement Management
Letitia de Graft-Johnson, DrPH
Director

Vital Records Branch
Vacant
Branch Chief

Public Health Laboratory
Glen Baker, MD, Director
Susan Wylie, Assoc. Dir. for Mgmt & Operations

Alcohol Testing Branch
Laura Bailey, MS
Branch Chief

Clinical/Biological Sciences Branch
Eric Rosenbaum, MD, MPH
Technical Director

Environmental/Chemistry Branch
Jeff Moran, PhD
Branch Chief

Department of Health Radiation Control Section

Bernie Beyvill, ADH Public Health Section Chief III

22109693 L025C/C123

Angela Minden, Health Physicist
22105697 B063C/C119

Wendy Krause, Budget Specialist
22106759 R027C/C117

Vernessa Minor, Admin. Specialist II
22105550 C056C/C112

Jared Thompson, Health Physicist Supervisor (Radioactive Material Program)

22105717 B044C/C121

Angela Hill, Health Physicist
22105032 B063C/C119

Tammy Kriesel, Health Physicist
22106796 B063C/C119

Kayla Avery, Health Physicist
22105862 B063C/C119

Robert Pemberton, Health Physicist
22105772 B063C/C119

Steve Mack, Health Physicist
22106313 B063C/C119

**Sandra Page, Administrative
Specialist III**
22104773 C056C/C112

Kim Wiebeck, Extra Help
22076921 9999,9999

David Snellings, Extra Help
22112197 9999,9999

Valerie Brown, Health Program Specialist II (Radiologic Technologist Program)

22131671 L048C/C118

Glynis Elmore, Administrative Specialist III
22105910 C056C/C112

VACANT, Administrative Specialist II
22104727 C073C/C109

Sherry Davidson, Health Physicist Supervisor (X-ray and Mammography Programs)

22105061 B044C/C121

Susan Dooley, Health Physicist
22106310 B063C/C119

VACANT, Health Physicist
22105428 B063C/C119

David Stephens, Health Physicist
22106551 B063C/C119

Kendra Christian, Health Physicist
22107001 B063C/C119

Melinda Davis, Health Physicist
22105104 B063C/C119

**Donna Thompson,
Health Physicist**
22104916 B063C/C119

**Ruby Forrest, Administrative
Specialist III**
22107005 C056C/C112