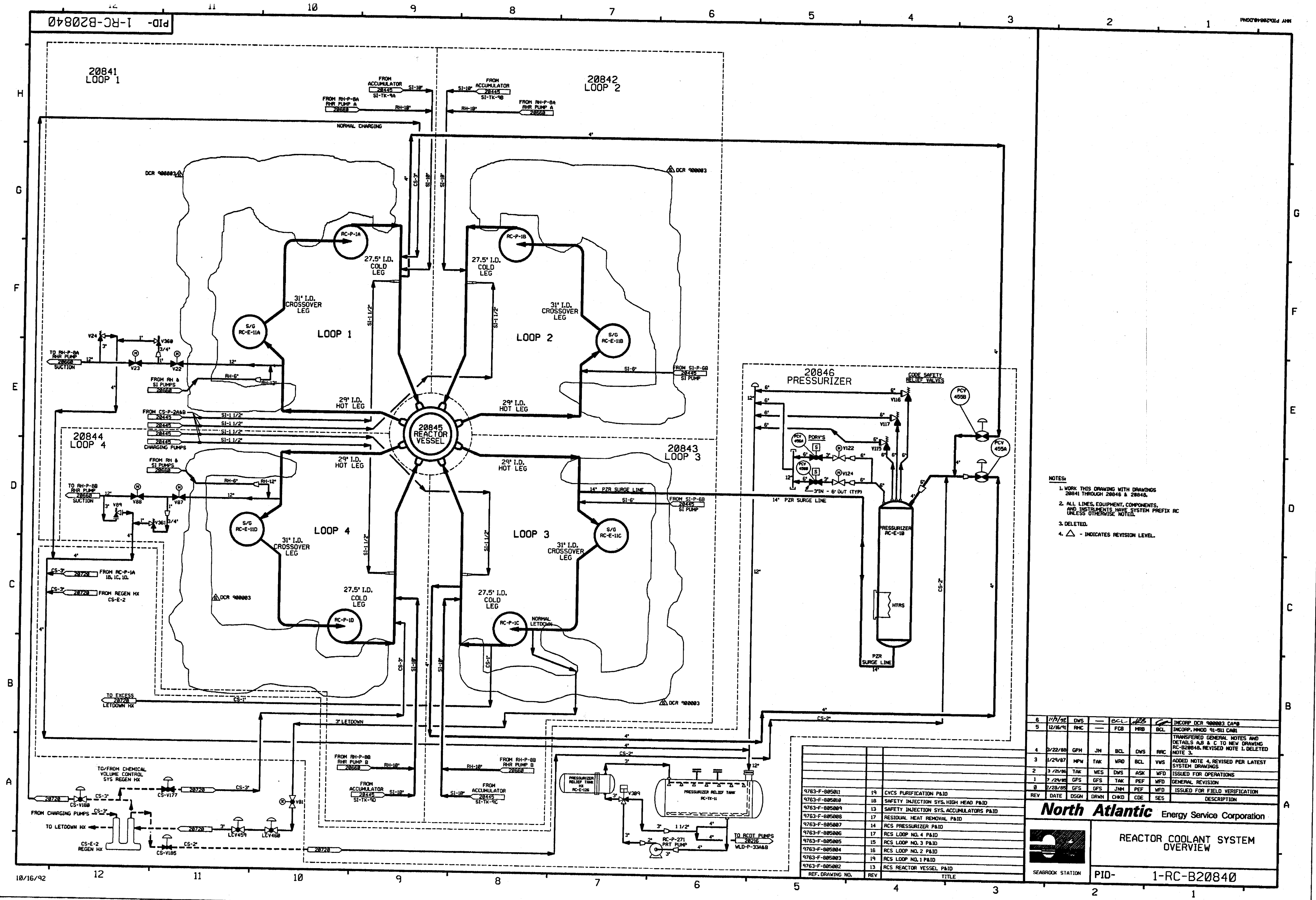


PID-1-RC-B20840



- NOTES:
- 1. WORK THIS DRAWING WITH DRAWINGS 20841 THROUGH 20846 & 20845.
 - 2. ALL LINES, EQUIPMENT, COMPONENTS, AND INSTRUMENTS HAVE SYSTEM PREFIX RC UNLESS OTHERWISE NOTED.
 - 3. DELETED.
 - 4. Δ - INDICATES REVISION LEVEL.

6	1/15/92	DWS		BCL	HRB	BCL	INCORP DCR 900003 CA#8
5	12/16/91	RMC		FCB	HRB	BCL	INCORP. MOD. 91-B1 CAN
4	2/22/88	GPH	JM	BCL	DWS	RRC	TRANSFERRED GENERAL NOTES AND DETAILS A, B & C TO NEW DRAWING RC-B20848. REVISED NOTE 1. DELETED NOTE 2.
3	1/24/87	HPW	TAK	WRD	BCL	VWS	ADDED NOTE 4. REVISED PER LATEST SYSTEM DRAWINGS
2	3/2/86	TAK	WES	DWS	ASK	WFD	ISSUED FOR OPERATIONS
1	7/29/85	GFS	GFS	TAK	PEF	WFD	GENERAL REVISION
0	2/28/85	GFS	GFS	JNM	PEF	WFD	ISSUED FOR FIELD VERIFICATION
REV	DATE	DSGN	DRWN	CHKD	CDE	SES	DESCRIPTION

REACTOR COOLANT SYSTEM OVERVIEW

SEABROOK STATION

PID-1-RC-B20840

9763-F-005011	19	CVCS PURIFICATION P&ID
9763-F-005018	18	SAFETY INJECTION SYS. HIGH HEAD P&ID
9763-F-005009	13	SAFETY INJECTION SYS. ACCUMULATORS P&ID
9763-F-005008	17	RESIDUAL HEAT REMOVAL P&ID
9763-F-005007	14	RCS PRESSURIZER P&ID
9763-F-005006	17	RCS LOOP NO. 4 P&ID
9763-F-005005	15	RCS LOOP NO. 3 P&ID
9763-F-005004	16	RCS LOOP NO. 2 P&ID
9763-F-005003	19	RCS LOOP NO. 1 P&ID
9763-F-005002	13	RCS REACTOR VESSEL P&ID
REF. DRAWING NO.	REV	TITLE

PID-1-RC-B20845

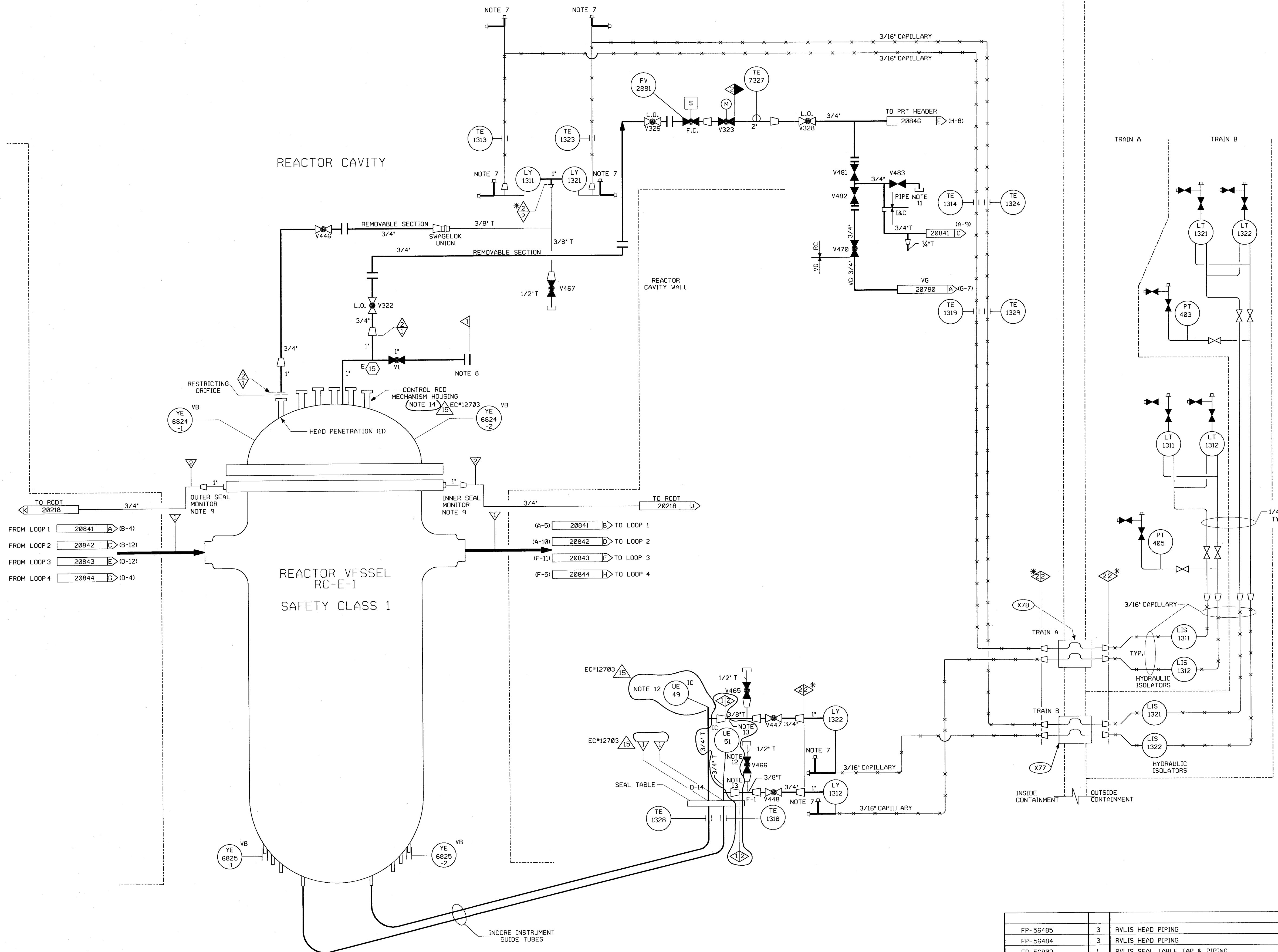
FOR P&ID REFERENCE DRAWINGS, SYMBOLS AND ABBREVIATIONS
REFER TO DRAWINGS P&ID - LEGEND 1 AND P&ID - LEGEND 2

REACTOR CONTAINMENT
BUILDING

TRAIN B
ELECTRICAL TUNNEL

REACTOR CAVITY

REACTOR VESSEL
RC-E-1
SAFETY CLASS 1



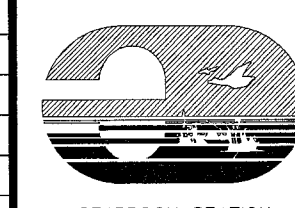
- NOTES:
1. INDICATES GENERAL NOTE NUMBER. REFER TO DRAWING 20848 FOR GENERAL NOTES.
 2. WORK THIS DRAWING WITH 20840, 20841, 20842, 20843, 20844, 20845 & 20846.
 3. ALL LINES, EQUIPMENT, COMPONENTS, AND INSTRUMENTATION HAVE SYSTEM PREFIX 'RC' UNLESS OTHERWISE NOTED.
 4. VENTS, DRAINS & TEST CONN. CODE BREAKS ARE AT THE DOWNSTREAM END OF THE OUTER ISOLATION VALVE PER 1-NHY-805111 UNLESS NOTED OTHERWISE.
 5. Δ - INDICATES REVISION LEVEL.
 6. DELETED
 7. CAPILLARY FILL & VENT VALVE: SEE FP-56496
 8. DURING PLANT OPERATION VENT IS SEALED WITH A SAFETY CLASS 1 BLIND FLANGE
 9. CLASS 1 TO CLASS 2 BOUNDARY AT THE METALLIC O-RING AND THE REACTOR VESSEL FLANGE.
 10. DELETED
 11. 1/8\"/>
 12. TYPICAL OF 58 CORE LOCATIONS. SEE 1-NHY-506647 FOR DESCRIPTION OF THE INCORE DETECTOR ASSEMBLIES AND CORRELATION OF THE CORE LOCATION TO TAG NUMBERS. SEE FP54049 FOR CORRELATION OF CORE LOCATION TO MOVABLE INCORE DETECTOR SYSTEM PATH.
 13. THE OTHER 56 CORE LOCATIONS HAVE THE SIDE BRANCH PLUGGED.
 14. SEE 1-NHY-310944 FOR CONTROL ROD DRIVE MECHANISM/ROD POSITION INDICATION CORE LOCATIONS AND TAG CROSS-REFERENCE.

EC*12783

PORTIONS OF THIS DRAWING ARE
NUCLEAR SAFETY RELATED

15	10/31/09	JM	BCS	WLF	INCORP EC*12783
14	4/3/08	BCS	JM	DOD	INCORP MMOD 07-523 DCN 00, 02 & MMOD 03-504 DCN 00
13	4/20/06	JM	BCS	RRB	INCORP CR 06-03016 REV 00
12	10/25/00	BCS	MRB	WFZ	INCORP DCR 96-0009 DCN-40
11	4/30/99	RWS	DWS	GRM	INCORP DCR 96-0009 DCN* 0
10	4/16/97	BCS	MPW	WNF	INCORP DCR 96-0015 CA 0
9	11/12/95	MPW	BCS	MHO	INCORP DCR 92-37 CA 01
8	11/11/89	MRB	PAL	OPM	INCORP DCR'S 87-136 CA-11 & 86-116 CA-23 REVISED CONTINUATION TAG LETTERS
7	12/15/87	GPM	DWS	PAS	REVISED NOTES, RENUMBERED NOTES, ADDED NOTE 4 & 9, FLOW RESTRICTOR INDICATOR SYMBOL, DELETED NOTE 6 & NNS-1 CLASS BOUNDARY, INCOMPLETE ITEMS ECA 05/104902F (CORRECTLY INCORP. PER FP-56502 PREVIOUS REV.)
6	11/04/86	JDM	BCL	RRC	REVISED SEAL TABLE INST. TAP CONNECTIONS PER FP-56902, ADDED CONT. FLAG REF. COORD'S AND INCOMPLETE ITEM, CORRECTED DRAFTING ERRORS, REMOVED ELECTRICAL SIGNALS PER UE&C P&ID.
0	3-7-85	GFS	JNM	WFD	ISSUED FOR FIELD VERIFICATION
REV	DATE	DSGN	CHKD	CE	DESCRIPTION

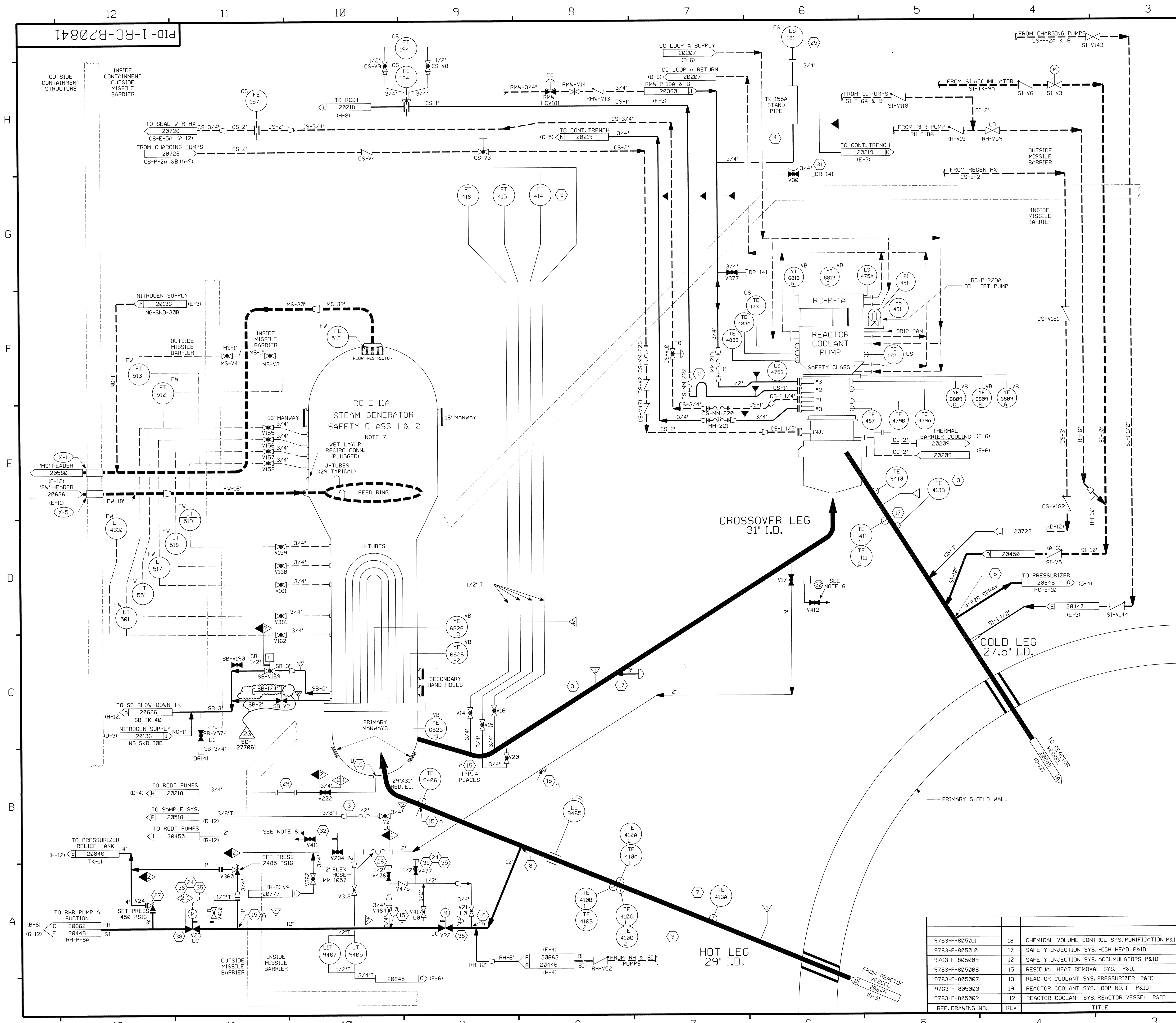
NEXTERA ENERGY
SEABROOK



REACTOR COOLANT SYSTEM
REACTOR VESSEL P & ID

PID- 1-RC-B20845

FP-56485	3	RVLIS HEAD PIPING
FP-56484	3	RVLIS HEAD PIPING
FP-56902	1	RVLIS SEAL TABLE TAP & PIPING
FP-56496	1	ITT BARTON TEE IN LINE FILL VALVES
FP-56493	1	HIGH VOLUME SENSOR
FP-56827	1	RVLIS CAPILLARY SCHEMATIC
9763-F-505275	0	INSTRUMENT INSTALLATION - RVLIS
9763-F-805002	13	RCS REACTOR VESSEL P&ID
REF. DRAWING NO.	REV	TITLE



FOR P&ID REFERENCE DRAWINGS, SYMBOLS AND ABBREVIATIONS
REFER TO DRAWINGS P&ID - LEGEND 1 AND P&ID - LEGEND 2

- NOTES:
- INDICATES GENERAL NOTE NUMBER - REFER TO DRAWING 20848 FOR GENERAL NOTES.
 - WORK THIS DRAWING WITH DRAWINGS 20840 AND 20842 THROUGH 20846 AND 20848.
 - ALL LINES, EQUIPMENT, COMPONENTS, AND INSTRUMENTATION HAVE SYSTEM PREFIX RC UNLESS OTHERWISE NOTED.
 - VENT, DRAIN & TEST CONN. CODE BREAKS ARE AT THE DOWNSTREAM END OF THE OUTER ISOLATION VALVE PER 1-NHY-805111, UNLESS NOTED OTHERWISE.
 - INDICATES REVISION LEVEL.
 - VALVE STEM LEAK-OFF ISOLATION VALVES V411 & V412 ARE TO BE MAINTAINED CLOSED. VALVE STEM LEAK-OFF TO BE CONSIDERED INOPERABLE.
 - STEAM GENERATOR SHELL SIDE IS ANS SAFETY CLASS 2 AND MANUFACTURED AS ASME CODE CLASS 1.

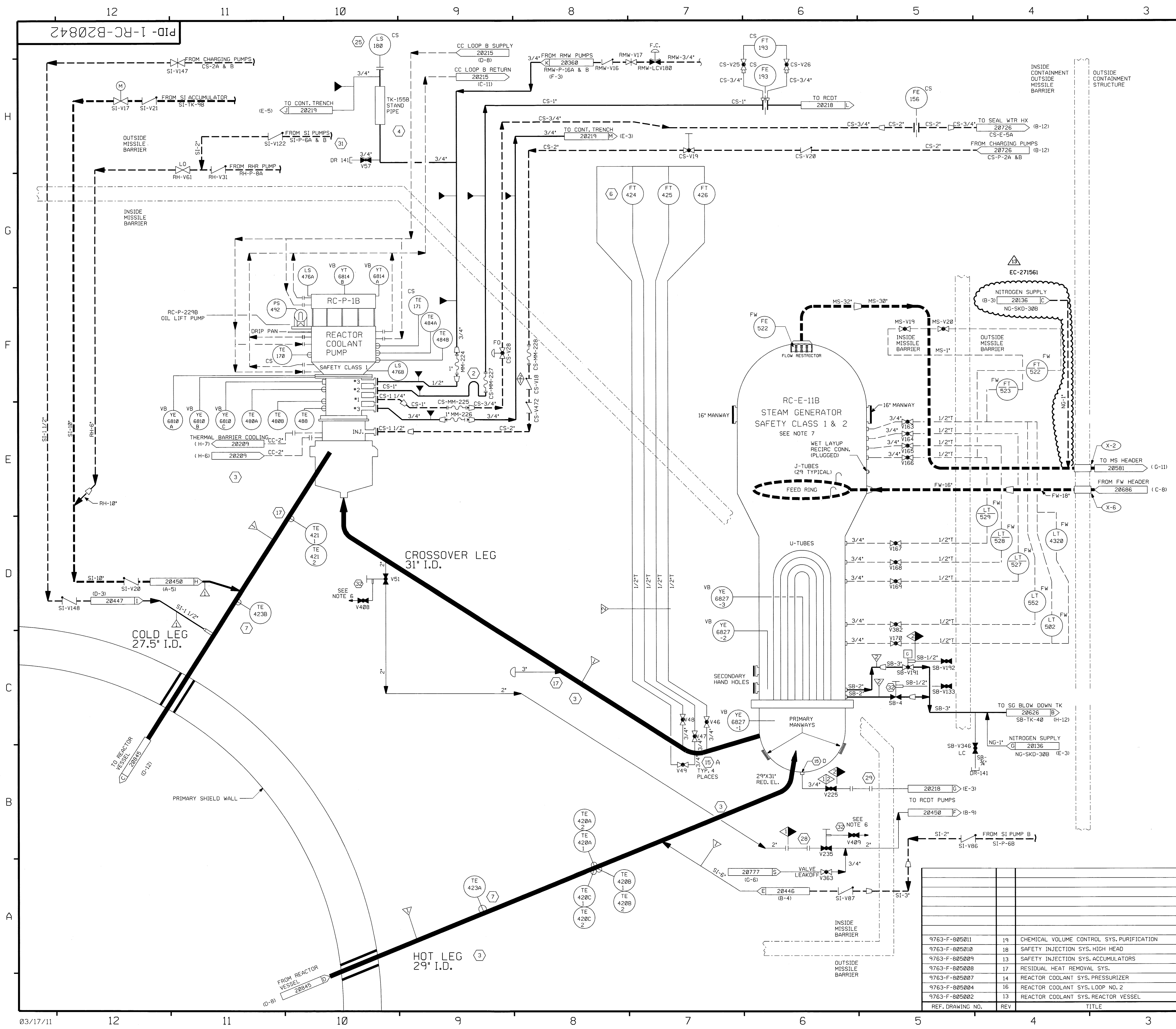
PORTIONS OF THIS DRAWING ARE
NUCLEAR SAFETY RELATED

23	10/12/12	JM	BCS	CIT	INCORP EC-277061
22	3/31/11	GPS	JM	BCS	INCORP EC-271561
21	04/03/08	JM	BCS	DDO	INCORP MMD 07-523 DCN 00
20	2/23/07	BCS	JM	RRB	INCORP CR 06-10182 REV. 0
19	8/12/03	BCS	JM	MPW	INCORP CR 03-06508 REV. 0
18	11/2/00	BCS	MPW	JPS	INCORP DCR 00-0010 DCN-00
17	7/3/98	DWS	MPW	DJM	INCORP DCR 910046 DCN*00
16	6/3/97	MPW	DWS	JPS	INCORP MMD 97-567 DCN*00
15	11/17/95	BCS	RRR	DMQ	INCORP DCR 95-23 CA*11
14	11/11/95	BCL	MPW	RRB	INCORP DCR 95-23 CA*0, 03
13	7/22/94	BCL	DWS	JEV	INCORP DCR 94-14 CA*0
12	11/3/92	DWS	BCL	ES	INCORP DCR 900003 CA*0
11	4-14-92	MRB	DWS	JEV	INCORP MMD 91-515 CA*0
10	9/5/91	GPM	FCB	IW	INCORP DCR 86-239 CA*0
9	8/23/91	GPM	JM	WF2	INCORP DCR 89-51 CA*06
8	12/29/89	MRB	APL	WFD	INCORP DCR 87-136 CA-03 & MMD 89-599 CA*0
7	10/14/88	MRB	GPM	RRR	INCORP NCR 86-60 REV. 1 ADDED VALVE LEAKOFF SYMBOL TO CLARIFY CLASS BREAK FOR SB-V189 & V2 PER UE & C P & ID 805003.
6	10/30/87	GPM	BCL	PAG	REV'D PIPING PER ERECTION ISOMETRIC. GEN. NOTE NO. 5, NOTES, RENUNCIATED NOTES, MOVED TECH. NOTES TO GEN. NOTES ON Dwg. RC-20848. ADDED DETAIL LETTER DESIGNATION FOR FLOW RESTRICTOR. DELETED DUPLICATED PIPING & INFO OF ASSOC. SYS. FLEX. HOSES, REDUNDANT CL. BOUNDARY & NOTES.
REV	DATE	DSGN	CHKD	CE	DESCRIPTION

REF. DRAWING NO.	REV	TITLE
9763-F-805011	18	CHEMICAL VOLUME CONTROL SYS. PURIFICATION P&ID
9763-F-805010	17	SAFETY INJECTION SYS. HIGH HEAD P&ID
9763-F-805009	12	SAFETY INJECTION SYS. ACCUMULATORS P&ID
9763-F-805008	15	RESIDUAL HEAT REMOVAL SYS. P&ID
9763-F-805007	13	REACTOR COOLANT SYS. PRESSURIZER P&ID
9763-F-805003	19	REACTOR COOLANT SYS. LOOP NO. 1 P&ID
9763-F-805002	12	REACTOR COOLANT SYS. REACTOR VESSEL P&ID

**REACTOR COOLANT SYSTEM
LOOP NO. 1**

PID- 1-RC-B20841



FOR P&ID REFERENCE DRAWINGS, SYMBOLS AND ABBREVIATIONS
REFER TO DRAWINGS P&ID - LEGEND 1 AND P&ID - LEGEND 2

- NOTES:
- INDICATES GENERAL NOTE NUMBER - REFER TO DRAWING 20848 FOR GENERAL NOTES.
 - WORK THIS DRAWING WITH DRAWINGS 20840, 20841 AND 20843 THROUGH 20846 AND 20848.
 - ALL LINES, EQUIPMENT, COMPONENTS, AND INSTRUMENTATION HAVE SYSTEM PREFIX RC UNLESS OTHERWISE NOTED.
 - VENT, DRAIN & TEST CONN. CODE BREAKS ARE AT THE DOWNSTREAM END OF THE OUTER ISOLATION VALVE PER I-NHY-885111 UNLESS NOTED OTHERWISE.
 - INDICATES REVISION LEVEL
 - VALVE STEM LEAK-OFF ISOLATION VALVES V408 & V409 ARE TO BE MAINTAINED CLOSED. VALVE STEM LEAK-OFF TO BE CONSIDERED INOPERABLE.
 - THE STEAM GENERATOR SHELL SIDE IS ANS SAFETY CLASS 2 AND WAS MANUFACTURED AS ASME CODE CLASS 1.

PORTIONS OF THIS DRAWING ARE
NUCLEAR SAFETY RELATED

13	3/31/11	GPS	JW	Bcs	INCORP EC-271561
12	02/23/07	BCS	JM	RRB	INCORP CR 06-10182 REV. 0
11	7/3/98	DWS	MPW	DJM	INCORP DCR 910046 DCN#00
10	7/22/94	BCL	DWS	JMcC	INCORP DCR 94-14 CA#0
9	11/3/92	DWS	BCL	ES	INCORP DCR 900003 CA#0
8	4/14/92	MRB	DWS	JEV	INCORP. MMOD 91-515 CA0
7	12/29/89	MRB	APL	WFO	INCORP. MMOD 89-599 CA
6	10/14/88	MRB	GPM	RRC	INCORP. NCR 86-60 REV 1 ADDED VALVE LEAKOFF SYMBOL TO CLARIFY CLASS BREAK FOR SB-V191 & SB-V4 PER UERC P&ID 505004. REV'D PIPING PER ERECTION ISO. NOTES, RENUMBERED NOTES, TRANSFERRED TECH. NOTES TO GENERAL NOTES ON DWG RC-20848. ADDED GENERAL NOTE NO'S, DETAIL LETTER DESIGNATION FOR FLOW RESTRICTOR, CONT. COORD. DELETED, DUPLICATED PIPING & INFO. OF ASSOC. SYS'S, FLEX HOSES, REDUNDANT CL BOUNDARY & NOTES.
5	02/15/87	GPM	DWS	PAG	DELETED Y1742A & B AND NOTE 5, ADDED Y6810A, B & C, Y16814A & B PER DRAWING 9763-M-506309
4	3/18/87	GPM	DWS	VWS	INCORP DCR 87-0074
3	3/18/87	JDM	QPO	VWS	ADDED 3/4" DIA TO ROOT VLV LINES, CORRECTED TUBING LINE SIZE TO 1/2" WAS 3/4", DELETED REF DWGS N/A REVISED TO CLARIFY DUPLICATIONS OF ASSOC. SYS. ADDED NCR 86/60A TO INCOMP. ITEMS LIST, MS-V296 WAS V236 PER UERC P&ID ADDED REF. LOCA COORD. RELOCATED MS-V19 & MS-V20 IN ERROR ADDED NOTE 12
2	10/17/86	PAL	BCL	RRC	ISSUED FOR OPERATIONS
1	3/21/86	TAK	DWS	WFO	ISSUED FOR FIELD VERIFICATION
0	7/16/85	GFS	TAK	WFO	
REV	DATE	DSGN	CHKD	CE	DESCRIPTION

NEXTERA ENERGY
SEABROOK





REACTOR COOLANT SYSTEM
LOOP NO. 2

PID- 1-RC-B20842

REF. DRAWING NO.	REV	TITLE
9763-F-805011	19	CHEMICAL VOLUME CONTROL SYS. PURIFICATION
9763-F-805010	18	SAFETY INJECTION SYS. HIGH HEAD
9763-F-805009	13	SAFETY INJECTION SYS. ACCUMULATORS
9763-F-805008	17	RESIDUAL HEAT REMOVAL SYS.
9763-F-805007	14	REACTOR COOLANT SYS. PRESSURIZER
9763-F-805004	16	REACTOR COOLANT SYS. LOOP NO. 2
9763-F-805002	13	REACTOR COOLANT SYS. REACTOR VESSEL



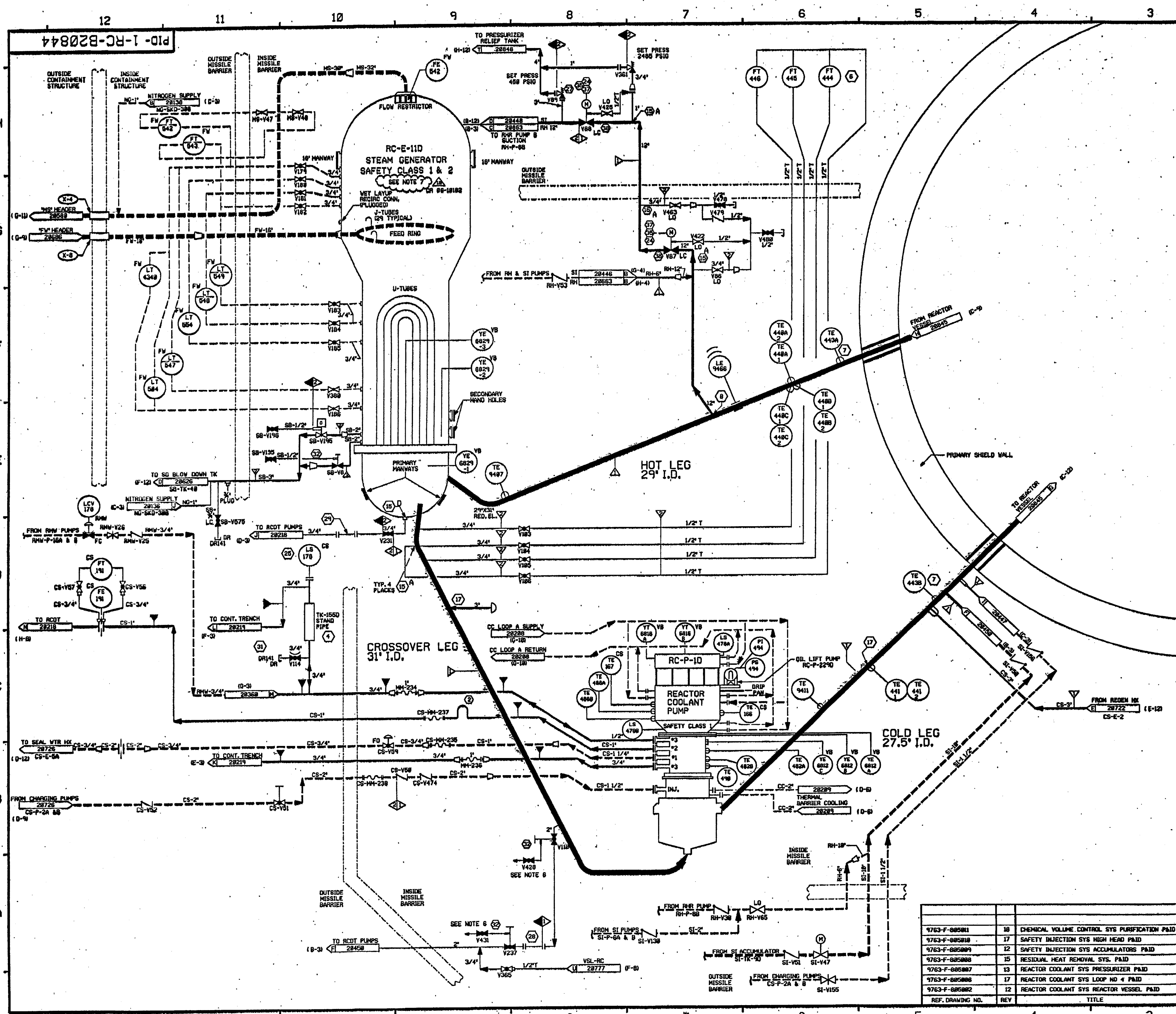
NOTES:

1.  INDICATES GENERAL NOTE NUMBER - REFER TO DRAWING 20848 FOR GENERAL NOTES.
2. WORK THIS DRAWING WITH DRAWINGS 20840, 20841, 20842, AND 20844 THROUGH 20846 AND 20848.
3. ALL LINES, EQUIPMENT, COMPONENTS, AND INSTRUMENTATION HAVE SYSTEM PREFIX RC UNLESS OTHERWISE NOTED.
4. VENTS, DRAINS & TEST CONN. COVE BREAKS ARE AT THE DOWNSTREAM END OF THE OUTER ISOLATION VALVE PER 1-NHY-805111 UNLESS NOTED OTHERWISE.
5.  INDICATES REVISION LEVEL.
6. VALVE STEM LEAK-OFF ISOLATION VALVES V392, V394, V395, V396, V398, V401 & V402 ARE NOT TO BE MAINTAINED CLOSED. VALVE STEM LEAK-OFF TO BE CONSIDERED INOPERABLE.
7. THE STEAM GENERATOR SHELL SIDE IS ANS SAFETY CLASS 2 AND WAS MANUFACTURED AS ASME CODE CLASS 1.

17	10/4/12	JM	CT	218	INCORP EC-275942
16	3/31/11	JM	JM	BCS	INCORP EC-271561
15	2/23/07	BCS	JM	RRB	INCORP, CR 06-10182 REV.0
14	7/3/98	MPW	DWS	DJM	INCORP DCR 91-46 DCN 00
13	7/22/94	BCL	DWS	JMCC	INCORP DCR 94-14 CA*0
12	11-3-92	DWS	BCL	ES	INCORP DCR 90-3 CA*0 & 90-40 CA*0
11	4-21-92	MRB	BCL	JEF	INCORP, MM0D 91-515 CA0
10	9/24/91	MRB	GPW	WVD	INCORP, MM0D 91-582 CA26
9	10/18/90	MRB	JM	RSQ	RE-INCORP ECA 05/103386B
EV	DATE	DSGN	CHKD	CE	DESCRIPTION



SEABROOK STATION




FOR PAID REFERENCE DRAWINGS, SYMBOLS AND ABBREVIATIONS
REFER TO DRAWING PAID - LEGEND 1 AND PAID - LEGEND 2

- NOTES
1. ○ INDICATES GENERAL NOTE NUMBER - REFER TO DRAWING 20840 FOR GENERAL NOTES.
 2. WORK THIS DRAWING WITH DRAWINGS 20840 THROUGH 20843 AND 20845 THROUGH 20848 & 20849.
 3. ALL LINES, EQUIPMENT, COMPONENTS AND INSTRUMENTATION HAVE SYSTEM PREFIX RC UNLESS OTHERWISE NOTED.
 4. VENT, DRAIN AND TEST CONNECTIONS ARE AT THE DOWNSTREAM END OF THE ISOLATION VALVE PER 1-WHY-88533 UNLESS NOTED OTHERWISE.
 5. △ - INDICATES REVISION LEVEL.
 6. VALVE STEM LEAK-OFF ISOLATION VALVES V420 & V421 ARE TO BE MAINTAINED CLOSED. VALVE STEM LEAK-OFF TO BE CONSIDERED IMPROPER.
 7. THE STEAM GENERATOR SHELL SIDE IS AWS CLASS 2 AND WAS MANUFACTURED AS AWS CODE CLASS 1.
CR 86-1802

PORTIONS OF THIS DRAWING ARE
NUCLEAR SAFETY RELATED

REV	DATE	DSGN	CHKD	CE	DESCRIPTION
18	3-21-77	BCS	JTM	SES	INCCRP CR 86-1802 REV. 8
17	1/2/76	MPW	DWS	DJM	INCCRP DCR 75-46 DCM 88
16	8/28/75	MPW	BCS	VMS	INCCRP MWD 76-558 DCM 81
15	11/22/76	MPW	BCS	DMO	INCCRP DCR 75-23 CA* 8, 3 & 11
14	7/22/74	BCL	DWS	JDOC	INCCRP DCR 74-8814 CA* 8
13	11/3/72	DMS	BCL	ES	INCCRP DCR 73-8803 CA* 8
12	4-28-72	MWB	DWS	RFB	INCCRP MWD 74-515 CA* 8
11	9/21/70	MWB	GPM	WFO	INCCRP MWD 74-582 CA* 8
10	9/5/71	GPM	FCB	IV	INCCRP DCR 86-231 CA* 8
REV	DATE	DSGN	CHKD	CE	DESCRIPTION

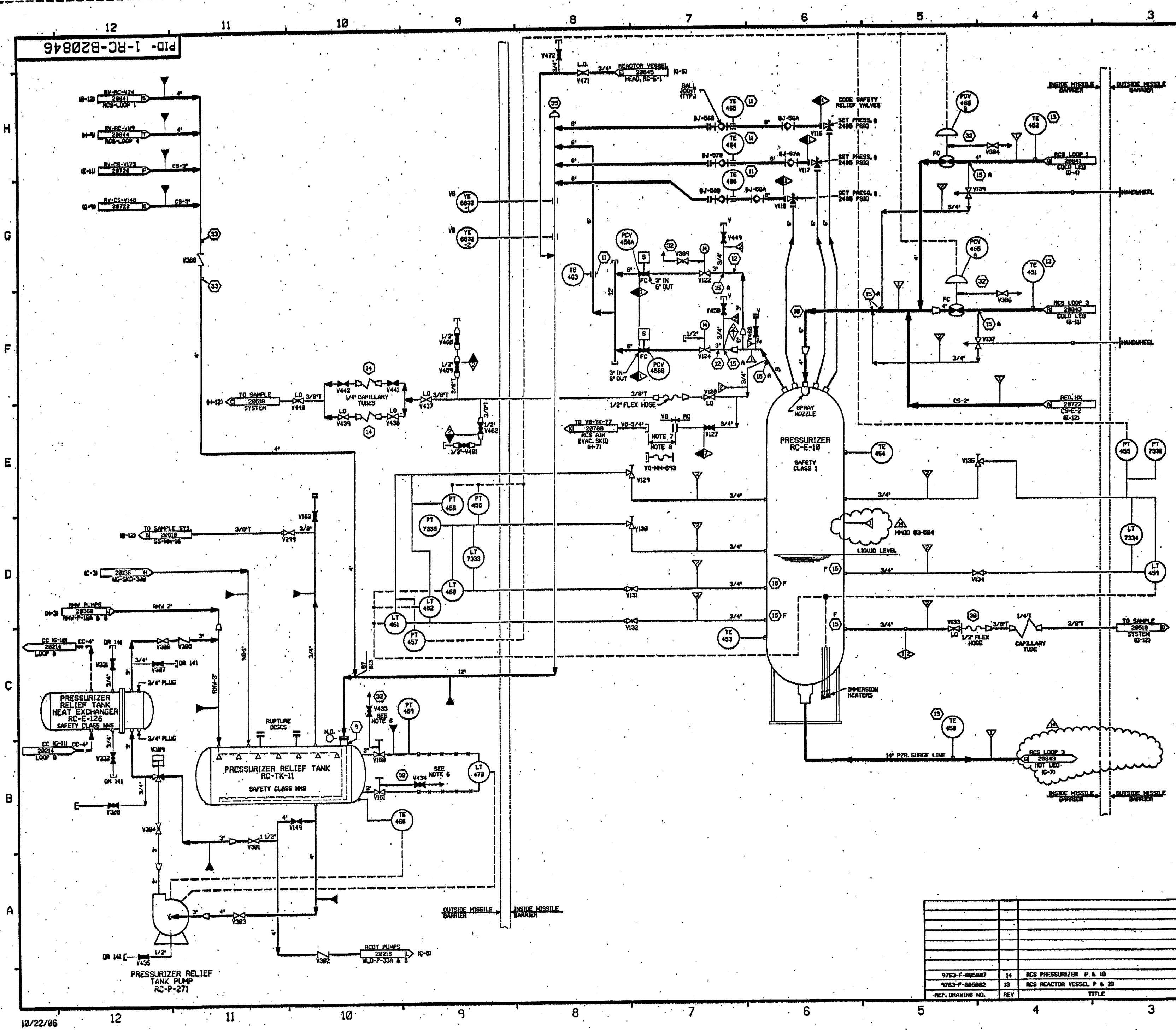
**FPL ENERGY**

Seabrook Station

REACTOR COOLANT SYSTEM
LOOP NO. 4

PID- 1-RC-B20844

REV	DATE	DSGN	CHKD	CE	DESCRIPTION
1763-F-885811	16				CHEMICAL VOLUME CONTROL SYS PURIFICATION PAID
1763-F-885818	17				SAFETY INJECTION SYS HIGH HEAD PAID
1763-F-885809	12				SAFETY INJECTION SYS ACCUMULATORS PAID
1763-F-885808	15				RESIDUAL HEAT REMOVAL SYS. PAID
1763-F-885807	13				REACTOR COOLANT SYS PRESSURIZER PAID
1763-F-885806	17				REACTOR COOLANT SYS LOOP NO 4 PAID
1763-F-885802	12				REACTOR COOLANT SYS REACTOR VESSEL PAID
REF. DRAWING NO.	REV	TITLE			



FOR PAID REFERENCE DRAWINGS, SYMBOLS AND ABBREVIATIONS
REFER TO DRAWINGS PAID - LEGEND 1 AND PAID - LEGEND 2

- NOTES:
1. INDICATES GENERAL NOTE NUMBER REFER TO DRAWING 20846 FOR GENERAL NOTES.
 2. WORK THIS DRAWING WITH DRAWINGS 20846 THRU 20848 & 20849.
 3. ALL LINES, EQUIPMENT, COMPONENTS AND INSTRUMENTS HAVE SYSTEM PREFIX, RC, UNLESS NOTED OTHERWISE.
 4. VENT, DRAIN & TEST COIL CODE BREAKS ARE AT THE DOWNSTREAM END OF THE OUTER ISOLATION VALVE PER 1-MY-0001 UNLESS NOTED OTHERWISE.
 5. INDICATES REVISION LEVEL.
 6. VALVE STEM LEAK-OFF ISOLATION VALVES V433 & V434 ARE TO BE MAINTAINED CLOSED. VALVE STEM LEAK-OFF TO BE CONSIDERED IMPERMEABLE.
 7. TYPON TUBING (REINFORCED POLYURETHANE "UREBRAC") TUBING TO BE INSTALLED WHEN REQUIRED DURING SHUTDOWN MODE FOR VENTING RC SYSTEM.
 8. DURING PRE-OUTAGE PRESSURIZER PURGING, A TEMPORARY SPOOL PIECE, TAG 1-RC-B20846-01, 1/2" DIA. 1/2" LONG, IS TO BE INSTALLED. TEMPORARY SPOOL PIECE WILL BE REMOVED FOLLOWING COMPLETION OF PURGING ACTIVITIES DCR 97-18.

PORTIONS OF THIS DRAWING ARE
NUCLEAR SAFETY RELATED

REV	DATE	DSGN	CHKD	CE	DESCRIPTION
14	10/22/86	BCS	JH	NRB	INCORP. HMOO 82-584 DCH-88 CORRECT CONTRIBUTION
13	12/18/87	BCS	DNS	ETH	INCORP. DCR 92-062 DCH 88
12	12/18/87	BCS	DNS	ETH	INCORP. DCR 92-16 DCH 88, 84
11	5/13/87	DNS	HPM	DNS	INCORP. DCR 97-0000 CH-88
10	5/26/87	HPM	DNS	ETH	INCORP. DCH 96-06 CMB
9	5/14/87	HPM	DNS	WFF	PARTIAL INCORP. DCR 92-16 CMB
8	12/18/86	NRB	FCB	BCL	INCORP. HMOO 91-581 CMB
7	1/24/86	NRB	JH	MLO	INCORP. HMOO 91-582 CMB
6	1/24/86	NRB	FCB	JV	INCORP. ECA 85/060608
5	12/28/85	NRB	CCM	MAC	INCORPORATED DCR 86-116 CA 6
4	12/13/86	NRB	GPM	MTJ	INCORPORATED DCR 86-28 REV 8
3	12/18/87	GPM	DNS	PAG	REVISED NOTE 1, 2 AND 4. EQUIP. CL. PER LEAC PAID. ADDED DETAIL LETTER DESIGNATION FOR FLOW RESTRICTION ORIF. CORPUS PAID. REF. NOTE DELETED. DUPLICATED INFO OF ASSOC. SYSTEM FLEX HOSES.
2	11/8/86	JHM	PAL	NRB	REMOVED PIPE SPEC BREAKS. INCORP. ECA 19/1185388
1	1/28/86	PAL	BCL	NRB	INCORP. ECA 19/1185414 REV. LEAKOFF. CONFIRMED FOR 1/15. 1/22/86. 1/25/86. 1/28/86. 1/31/86. 2/3/86. 2/6/86. 2/9/86. 2/12/86. 2/15/86. 2/18/86. 2/21/86. 2/24/86. 2/27/86. 3/1/86. 3/4/86. 3/7/86. 3/10/86. 3/13/86. 3/16/86. 3/19/86. 3/22/86. 3/25/86. 3/28/86. 3/31/86. 4/3/86. 4/6/86. 4/9/86. 4/12/86. 4/15/86. 4/18/86. 4/21/86. 4/24/86. 4/27/86. 4/30/86. 5/3/86. 5/6/86. 5/9/86. 5/12/86. 5/15/86. 5/18/86. 5/21/86. 5/24/86. 5/27/86. 5/30/86. 6/2/86. 6/5/86. 6/8/86. 6/11/86. 6/14/86. 6/17/86. 6/20/86. 6/23/86. 6/26/86. 6/29/86. 7/2/86. 7/5/86. 7/8/86. 7/11/86. 7/14/86. 7/17/86. 7/20/86. 7/23/86. 7/26/86. 7/29/86. 8/1/86. 8/4/86. 8/7/86. 8/10/86. 8/13/86. 8/16/86. 8/19/86. 8/22/86. 8/25/86. 8/28/86. 8/31/86. 9/3/86. 9/6/86. 9/9/86. 9/12/86. 9/15/86. 9/18/86. 9/21/86. 9/24/86. 9/27/86. 9/30/86. 10/3/86. 10/6/86. 10/9/86. 10/12/86. 10/15/86. 10/18/86. 10/21/86. 10/24/86. 10/27/86. 10/30/86. 11/2/86. 11/5/86. 11/8/86. 11/11/86. 11/14/86. 11/17/86. 11/20/86. 11/23/86. 11/26/86. 11/29/86. 12/2/86. 12/5/86. 12/8/86. 12/11/86. 12/14/86. 12/17/86. 12/20/86. 12/23/86. 12/26/86. 12/29/86. 1/1/87. 1/4/87. 1/7/87. 1/10/87. 1/13/87. 1/16/87. 1/19/87. 1/22/87. 1/25/87. 1/28/87. 1/31/87. 2/3/87. 2/6/87. 2/9/87. 2/12/87. 2/15/87. 2/18/87. 2/21/87. 2/24/87. 2/27/87. 2/28/87. 3/1/87. 3/4/87. 3/7/87. 3/10/87. 3/13/87. 3/16/87. 3/19/87. 3/22/87. 3/25/87. 3/28/87. 3/31/87. 4/3/87. 4/6/87. 4/9/87. 4/12/87. 4/15/87. 4/18/87. 4/21/87. 4/24/87. 4/27/87. 4/30/87. 5/3/87. 5/6/87. 5/9/87. 5/12/87. 5/15/87. 5/18/87. 5/21/87. 5/24/87. 5/27/87. 5/30/87. 6/2/87. 6/5/87. 6/8/87. 6/11/87. 6/14/87. 6/17/87. 6/20/87. 6/23/87. 6/26/87. 6/29/87. 7/2/87. 7/5/87. 7/8/87. 7/11/87. 7/14/87. 7/17/87. 7/20/87. 7/23/87. 7/26/87. 7/29/87. 8/1/87. 8/4/87. 8/7/87. 8/10/87. 8/13/87. 8/16/87. 8/19/87. 8/22/87. 8/25/87. 8/28/87. 8/31/87. 9/3/87. 9/6/87. 9/9/87. 9/12/87. 9/15/87. 9/18/87. 9/21/87. 9/24/87. 9/27/87. 9/30/87. 10/3/87. 10/6/87. 10/9/87. 10/12/87. 10/15/87. 10/18/87. 10/21/87. 10/24/87. 10/27/87. 10/30/87. 11/2/87. 11/5/87. 11/8/87. 11/11/87. 11/14/87. 11/17/87. 11/20/87. 11/23/87. 11/26/87. 11/29/87. 12/2/87. 12/5/87. 12/8/87. 12/11/87. 12/14/87. 12/17/87. 12/20/87. 12/23/87. 12/26/87. 12/29/87. 1/1/88. 1/4/88. 1/7/88. 1/10/88. 1/13/88. 1/16/88. 1/19/88. 1/22/88. 1/25/88. 1/28/88. 1/31/88. 2/3/88. 2/6/88. 2/9/88. 2/12/88. 2/15/88. 2/18/88. 2/21/88. 2/24/88. 2/27/88. 2/28/88. 3/1/88. 3/4/88. 3/7/88. 3/10/88. 3/13/88. 3/16/88. 3/19/88. 3/22/88. 3/25/88. 3/28/88. 3/31/88. 4/3/88. 4/6/88. 4/9/88. 4/12/88. 4/15/88. 4/18/88. 4/21/88. 4/24/88. 4/27/88. 4/30/88. 5/3/88. 5/6/88. 5/9/88. 5/12/88. 5/15/88. 5/18/88. 5/21/88. 5/24/88. 5/27/88. 5/30/88. 6/2/88. 6/5/88. 6/8/88. 6/11/88. 6/14/88. 6/17/88. 6/20/88. 6/23/88. 6/26/88. 6/29/88. 7/2/88. 7/5/88. 7/8/88. 7/11/88. 7/14/88. 7/17/88. 7/20/88. 7/23/88. 7/26/88. 7/29/88. 8/1/88. 8/4/88. 8/7/88. 8/10/88. 8/13/88. 8/16/88. 8/19/88. 8/22/88. 8/25/88. 8/28/88. 8/31/88. 9/3/88. 9/6/88. 9/9/88. 9/12/88. 9/15/88. 9/18/88. 9/21/88. 9/24/88. 9/27/88. 9/30/88. 10/3/88. 10/6/88. 10/9/88. 10/12/88. 10/15/88. 10/18/88. 10/21/88. 10/24/88. 10/27/88. 10/30/88. 11/2/88. 11/5/88. 11/8/88. 11/11/88. 11/14/88. 11/17/88. 11/20/88. 11/23/88. 11/26/88. 11/29/88. 12/2/88. 12/5/88. 12/8/88. 12/11/88. 12/14/88. 12/17/88. 12/20/88. 12/23/88. 12/26/88. 12/29/88. 1/1/89. 1/4/89. 1/7/89. 1/10/89. 1/13/89. 1/16/89. 1/19/89. 1/22/89. 1/25/89. 1/28/89. 1/31/89. 2/3/89. 2/6/89. 2/9/89. 2/12/89. 2/15/89. 2/18/89. 2/21/89. 2/24/89. 2/27/89. 2/28/89. 3/1/89. 3/4/89. 3/7/89. 3/10/89. 3/13/89. 3/16/89. 3/19/89. 3/22/89. 3/25/89. 3/28/89. 3/31/89. 4/3/89. 4/6/89. 4/9/89. 4/12/89. 4/15/89. 4/18/89. 4/21/89. 4/24/89. 4/27/89. 4/30/89. 5/3/89. 5/6/89. 5/9/89. 5/12/89. 5/15/89. 5/18/89. 5/21/89. 5/24/89. 5/27/89. 5/30/89. 6/2/89. 6/5/89. 6/8/89. 6/11/89. 6/14/89. 6/17/89. 6/20/89. 6/23/89. 6/26/89. 6/29/89. 7/2/89. 7/5/89. 7/8/89. 7/11/89. 7/14/89. 7/17/89. 7/20/89. 7/23/89. 7/26/89. 7/29/89. 8/1/89. 8/4/89. 8/7/89. 8/10/89. 8/13/89. 8/16/89. 8/19/89. 8/22/89. 8/25/89. 8/28/89. 8/31/89. 9/3/89. 9/6/89. 9/9/89. 9/12/89. 9/15/89. 9/18/89. 9/21/89. 9/24/89. 9/27/89. 9/30/89. 10/3/89. 10/6/89. 10/9/89. 10/12/89. 10/15/89. 10/18/89. 10/21/89. 10/24/89. 10/27/89. 10/30/89. 11/2/89. 11/5/89. 11/8/89. 11/11/89. 11/14/89. 11/17/89. 11/20/89. 11/23/89. 11/26/89. 11/29/89. 12/2/89. 12/5/89. 12/8/89. 12/11/89. 12/14/89. 12/17/89. 12/20/89. 12/23/89. 12/26/89. 12/29/89. 1/1/90. 1/4/90. 1/7/90. 1/10/90. 1/13/90. 1/16/90. 1/19/90. 1/22/90. 1/25/90. 1/28/90. 1/31/90. 2/3/90. 2/6/90. 2/9/90. 2/12/90. 2/15/90. 2/18/90. 2/21/90. 2/24/90. 2/27/90. 2/28/90. 3/1/90. 3/4/90. 3/7/90. 3/10/90. 3/13/90. 3/16/90. 3/19/90. 3/22/90. 3/25/90. 3/28/90. 3/31/90. 4/3/90. 4/6/90. 4/9/90. 4/12/90. 4/15/90. 4/18/90. 4/21/90. 4/24/90. 4/27/90. 4/30/90. 5/3/90. 5/6/90. 5/9/90. 5/12/90. 5/15/90. 5/18/90. 5/21/90. 5/24/90. 5/27/90. 5/30/90. 6/2/90. 6/5/90. 6/8/90. 6/11/90. 6/14/90. 6/17/90. 6/20/90. 6/23/90. 6/26/90. 6/29/90. 7/2/90. 7/5/90. 7/8/90. 7/11/90. 7/14/90. 7/17/90. 7/20/90. 7/23/90. 7/26/90. 7/29/90. 8/1/90. 8/4/90. 8/7/90. 8/10/90. 8/13/90. 8/16/90. 8/19/90. 8/22/90. 8/25/90. 8/28/90. 8/31/90. 9/3/90. 9/6/90. 9/9/90. 9/12/90. 9/15/90. 9/18/90. 9/21/90. 9/24/90. 9/27/90. 9/30/90. 10/3/90. 10/6/90. 10/9/90. 10/12/90. 10/15/90. 10/18/90. 10/21/90. 10/24/90. 10/27/90. 10/30/90. 11/2/90. 11/5/90. 11/8/90. 11/11/90. 11/14/90. 11/17/90. 11/20/90. 11/23/90. 11/26/90. 11/29/90. 12/2/90. 12/5/90. 12/8/90. 12/11/90. 12/14/90. 12/17/90. 12/20/90. 12/23/90. 12/26/90. 12/29/90. 1/1/91. 1/4/91. 1/7/91. 1/10/91. 1/13/91. 1/16/91. 1/19/91. 1/22/91. 1/25/91. 1/28/91. 1/31/91. 2/3/91. 2/6/91. 2/9/91. 2/12/91. 2/15/91. 2/18/91. 2/21/91. 2/24/91. 2/27/91. 2/28/91. 3/1/91. 3/4/91. 3/7/91. 3/10/91. 3/13/91. 3/16/91. 3/19/91. 3/22/91. 3/25/91. 3/28/91. 3/31/91. 4/3/91. 4/6/91. 4/9/91. 4/12/91. 4/15/91. 4/18/91. 4/21/91. 4/24/91. 4/27/91. 4/30/91. 5/3/91. 5/6/91. 5/9/91. 5/12/91. 5/15/91. 5/18/91. 5/21/91. 5/24/91. 5/27/91. 5/30/91. 6/2/91. 6/5/91. 6/8/91. 6/11/91. 6/14/91. 6/17/91. 6/20/91. 6/23/91. 6/26/91. 6/29/91. 7/2/91. 7/5/91. 7/8/91. 7/11/91. 7/14/91. 7/17/91. 7/20/91. 7/23/91. 7/26/91. 7/29/91. 8/1/91. 8/4/91. 8/7/91. 8/10/91. 8/13/91. 8/16/91. 8/19/91. 8/22/91. 8/25/91. 8/28/91. 8/31/91. 9/3/91. 9/6/91. 9/9/91. 9/12/91. 9/15/91. 9/18/91. 9/21/91. 9/24/91. 9/27/91. 9/30/91. 10/3/91. 10/6/91. 10/9/91. 10/12/91. 10/15/91. 10/18/91. 10/21/91. 10/24/91. 10/27/91. 10/30/91. 11/2/91. 11/5/91. 11/8/91. 11/11/91. 11/14/91. 11/17/91. 11/20/91. 11/23/91. 11/26/91. 11/29/91. 12/2/91. 12/5/91. 12/8/91. 12/11/91. 12/14/91. 12/17/91. 12/20/91. 12/23/91. 12/26/91. 12/29/91. 1/1/92. 1/4/92. 1/7/92. 1/10/92. 1/13/92. 1/16/92. 1/19/92. 1/22/92. 1/25/92. 1/28/92. 1/31/92. 2/3/92. 2/6/92. 2/9/92. 2/12/92. 2/15/92. 2/18/92. 2/21/92. 2/24/92. 2/27/92. 2/28/92. 3/1/92. 3/4/92. 3/7/92. 3/10/92. 3/13/92. 3/16/92. 3/19/92. 3/22/92. 3/25/92. 3/28/92. 3/31/92. 4/3/92. 4/6/92. 4/9/92. 4/12/92. 4/15/92. 4/18/92. 4/21/92. 4/24/92. 4/27/92. 4/30/92. 5/3/92. 5/6/92. 5/9/92. 5/12/92. 5/15/92. 5/18/92. 5/21/92. 5/24/92. 5/27/92. 5/30/92. 6/2/92. 6/5/92. 6/8/92. 6/11/92. 6/14/92. 6/17/92. 6/20/92. 6/23/92. 6/26/92. 6/29/92. 7/2/92. 7/5/92. 7/8/92. 7/11/92. 7/14/92. 7/17/92. 7/20/92. 7/23/92. 7/26/92. 7/29/92. 8/1/92. 8/4/92. 8/7/92. 8/10/92. 8/13/92. 8/16/92. 8/19/92. 8/22/92. 8/25/92. 8/28/92. 8/31/92. 9/3/92. 9/6/92. 9/9/92. 9/12/92. 9/15/92. 9/18/92. 9/21/92. 9/24/92. 9/27/92. 9/30/92. 10/3/92. 10/6/92. 10/9/92. 10/12/92. 10/15/92. 10/18/92. 10/21/92. 10/24/92. 10/27/92. 10/30/92. 11/2/92. 11/5/92. 11/8/92. 11/11/92. 11/14/92. 11/17/92. 11/20/92. 11/23/92. 11/26/92. 11/29/92. 12/2/92. 12/5/92. 12/8/92. 12/11/92. 12/14/92. 12/17/92. 12/20/92. 12/23/92. 12/26/92. 12/29/92. 1/1/93. 1/4/93. 1/7/93. 1/10/93. 1/13/93. 1/16/93. 1/19/93. 1/22/93. 1/25/93. 1/28/93. 1/31/93. 2/3/93. 2/6/93. 2/9/93. 2/12/93. 2/15/93. 2/18/93. 2/21/93. 2/24/93. 2/27/93. 2/28/93. 3/1/93. 3/4/93. 3/7/93. 3/10/93. 3/13/93. 3/16/93. 3/19/93. 3/22/93. 3/25/93. 3/28/93. 3/31/93. 4/3/93. 4/6/93. 4/9/93. 4/12/93. 4/15/93. 4/18/93. 4/21/93. 4/24/93. 4/27/93. 4/30/93. 5/3/93. 5/6/93. 5/9/93. 5/12/93. 5/15/93. 5/18/93. 5/21/93. 5/24/93. 5/27/93. 5/30/93. 6/2/93. 6/5/93. 6/8/93. 6/11/93. 6/14/93. 6/17/93. 6/20/93. 6/23/93. 6/26/93. 6/29/93. 7/2/93. 7/5/93. 7/8/93. 7/11/93. 7/14/93. 7/17/93. 7/20/93. 7/23/93. 7/26/93. 7/29/93. 8/1/93. 8/4/93. 8/7/93. 8/10/93. 8/13/93. 8/16/93. 8/19/93. 8/22/93. 8/25/93. 8/28/93. 8/31/93. 9/3/93. 9/6/93. 9/9/93. 9/12/93. 9/15/93. 9/18/93. 9/21/93. 9/24/93. 9/27/93. 9/30/93. 10/3/93. 10/6/93. 10/9/93. 10/12/93. 10/15/93. 10/18/93. 10/21/93. 10/24/93. 10/27/93. 10/30/93. 11/2/93. 11/5/93. 11/8/93. 11/11/93. 11/14/93. 11/17/93. 11/20/93. 11/23/93. 11/26/93. 11/29/93. 12/2/93. 12/5/93. 12/8/93. 12/11/93. 12/14/93. 12/17/93. 12/20/93. 12/23/93. 12/26/93. 12/29/93. 1/1/94. 1/4/94. 1/7/94. 1/10/94. 1/13/94. 1/16/94. 1/19/94. 1/22/94. 1/25/94. 1/28/94. 1/31/94. 2/3/94. 2/6/94. 2/9/94. 2/12/94. 2/15/94. 2/18/94. 2/21/94. 2/24/94. 2/27/94. 2/28/94. 3/1/94. 3/4/94. 3/7/94. 3/10/94. 3/13/94. 3/16/94. 3/19/94. 3/22/94. 3/25/94. 3/28/94. 3/31/94. 4/3/94. 4/6/94. 4/9/94. 4/12/94. 4/15/94. 4/18/94. 4/21/94. 4/24/94. 4/27/94. 4/30/94. 5/3/94. 5/6/94. 5/9/94. 5/12/94. 5/15/94. 5/18/94. 5/21/94. 5/24/94. 5/27/94. 5/30/94. 6/2/94. 6/5/94. 6/8/94. 6/11/94. 6/14/94. 6/17/94. 6/20/94. 6/23/94. 6/26/94. 6/29/94. 7/2/94. 7/5/94. 7/8/94. 7/11/94. 7/14/94. 7/17/94. 7/20/94. 7/23/94. 7/26/94. 7/29/94. 8/1/94. 8/4/94. 8/7/94. 8/10/94. 8/13/94. 8/16/94. 8/19/94. 8/22/94. 8/25/94. 8/28/94. 8/31/94. 9/3/94. 9/6/94. 9/9/94. 9/12/94. 9/15/94. 9/18/94. 9/21/94. 9/24/94. 9/27/94. 9/30/94. 10/3/94. 10/6/94. 10/9/94. 10/12/94. 10/15/94. 10/18/94. 10/21/94. 10/24/94. 10/27/94. 10/30/94. 11/2/94. 11/5/94. 11/8/94. 11/11/94. 11/14/94. 11/17/94. 11/20/94. 11/23/94. 11/26/94. 11/29/94. 12/2/94. 12/5/94. 12/8/94. 12/11/94. 12/14/94. 12/17/94. 12/20/94. 12/23/94. 12/26/94. 12/29/94. 1/1/95. 1/4/95. 1/7/95. 1/10/95. 1/13/95. 1/16/95. 1/19/95. 1/22/95. 1/25/95. 1/28/95. 1/31/95. 2/3/95. 2/6/95. 2/9/95. 2/12/95. 2/15/95. 2/18/95. 2/21/95. 2/24/95. 2/27/95. 2/28/95. 3/1/95. 3/4/95. 3/7/95. 3/10/95. 3/13/95. 3/16/95. 3/19/95. 3/22/95. 3/25/95. 3/28/95. 3/31/95. 4/3/95. 4/6/95. 4/9/95. 4/12/95. 4/15/95. 4/18/95. 4/21/95. 4/24/95. 4/27/95. 4/30/95. 5/3/95. 5/6/95. 5/9/95. 5/12/95. 5/15/95. 5/18/95. 5/21/95. 5/24/95. 5/27/95. 5/30/95. 6/2/95. 6/5/95. 6/8/95. 6/11/95. 6/14/95. 6/17/95. 6/20/95. 6/23/95. 6/26/95. 6/29/95. 7/2/95. 7/5/95. 7/8/95. 7/11/95. 7/14/95. 7/17/95. 7/20/95. 7/23/95. 7/26/95. 7/29/95. 8/1/95. 8/4/95.

RC-TTY-466 P&ID RC-820846
BLDG/EL: CTL/75' INSTL.
LOC. F-500090 LOOP M-506641(RC SYS)
DESCRIPTION: PRESS. RELIEF TEMP.

RC-TTY-465 P&ID RC-820846
BLDG/EL: CTL/75' INSTL.
LOC. F-500090 LOOP M-506641(RC SYS)
DESCRIPTION: PRESS. RELIEF TEMP.

RC-TTY-464 P&ID RC-820846
BLDG/EL: CTL/75' INSTL.
LOC. F-500090 LOOP M-506641(RC SYS)
DESCRIPTION: PRESS. RELIEF TEMP.

RC-LDY-470 P&ID RC-820846
BLDG/EL: CTL/75' INSTL.
LOC. F-500090 LOOP M-506643(RC SYS)
DESCRIPTION: PRESS. RELIEF TANK LEVEL

CS-TTY-125 P&ID CS-820722
BLDG/EL: CTL/75' INSTL.
LOC. F-500090 LOOP M-506269(CS SYS)
DESCRIPTION: LETDOWN VALVE RELIEF DISCH. TEMP.

RC-TTY-401 P&ID WLD-820218
BLDG/EL: CTL/75' INSTL.
LOC. F-500090 LOOP M-506662(WLD SYS)
DESCRIPTION: REACTOR VESSEL FLANGE LEAK-OFF TEMP.

LD-8330
CONTIN. SUMP "A"
EL. (-152'-9")
TRN. "A"
ELEC. TUN.
EL. 0'-0"

LD-8332
CONTIN. SUMP "B"
EL. (-152'-0")
TRN. "A"
ELEC. TUN.
EL. 0'-0"

LD-8333
CONTIN. SUMP "B"
EL. (-152'-0")
TRN. "A"
ELEC. TUN.
EL. 0'-0"

MM-UGY-5836 P&ID WLD-820218
BLDG/EL: CTL/75' INSTL.
LOC. F-500090 LOOP M-506695(WLD SYS)
DESCRIPTION: CONTIN. BLDG. SUMP "A" LEVEL

MM-UGY-5836 P&ID WLD-820218
BLDG/EL: CTL/75' INSTL.
LOC. F-500090 LOOP M-506695(WLD SYS)
DESCRIPTION: CONTIN. BLDG. SUMP "B" LEVEL

CS-L5-151 P&ID RC-820841
BLDG/EL: CONTN/0' INSTL.
LOC. F-500164 LOOP M-506280(CS SYS)
DESCRIPTION: RCP "A" SEAL LEAK-OFF STANDPIPE LEVEL

CS-L5-150 P&ID RC-820842
BLDG/EL: CONTN/0' INSTL.
LOC. F-500165 LOOP M-506281(CS SYS)
DESCRIPTION: RCP "B" SEAL LEAK-OFF STANDPIPE LEVEL

CS-L5-178 P&ID RC-820844
BLDG/EL: CONTN/0' INSTL.
LOC. F-500167 LOOP M-506283(CS SYS)
DESCRIPTION: RCP "D" SEAL LEAK-OFF STANDPIPE LEVEL

CS-FT-194 P&ID RC-820841
BLDG/EL: CONTN/12' INSTL.
LOC. F-500160 LOOP I-NHY-506280(CS SYS)
DESCRIPTION: RCP "A" SEAL #2 LEAKAGE FLOW

CS-FT-193 P&ID RC-820842
BLDG/EL: CONTN/12' INSTL.
LOC. F-500165 LOOP I-NHY-506281(CS SYS)
DESCRIPTION: RCP "B" SEAL #2 LEAKAGE FLOW

CS-FT-192 P&ID RC-820843
BLDG/EL: CONTN/12' INSTL.
LOC. F-500162 LOOP I-NHY-506282(CS SYS)
DESCRIPTION: RCP "C" SEAL #2 LEAKAGE FLOW

CS-FT-191 P&ID RC-820844
BLDG/EL: CONTN/12' INSTL.
LOC. F-500163 LOOP I-NHY-506283(CS SYS)
DESCRIPTION: RCP "D" SEAL #2 LEAKAGE FLOW

MAIN PLANT COMPUTER SYSTEM(MPCS)			
DIGITAL ALARMS	ANALOG	ANALOG	DIGITAL ALARMS
D4319(2) HI			
D4318(2) HI			
D4317(1) HI			
D4475(1) HI			
D4422(2) HI			
D4320(1) HI			
NONE	A1710 (2)		
NONE	A1711 (2)		
D4604(S) HI			
D4412 (5) HI			
D4413 (5) LO			
D4485 (5) LO			
D4486 (5) HI			
D4414 (5) HI			
D4415 (5) LO			
D4487 (5) LO			
D4608 (5) HI			
D4616 (5) HI			
D4617 (5) LO			
D4689 (5) LO			
D4690 (5) HI			
D4618 (5) HI			
D4619 (5) LO			
D4691 (5) LO			
NONE	A4220		
NONE	A4229		
NONE	A4228		
NONE	A4227		

VIA DUCT BANK BETWEEN PLANT & MET TOWER

MET TOWER INTERFACE BY YABC

RC-TTY-163 P&ID RC-820846
BLDG/EL: CTL/75' INSTL.
LOC. F-500090 LOOP M-506641(RC SYS)
DESCRIPTION: PRESS. RC-E-D RELIEF DISCH. TEMP.

SC-TTY-9189-44 P&ID RC-820845
BLDG/EL: TUNNEL/0' INSTL.
LOC. F-500090 LOOP M-506621(RC SYS)
DESCRIPTION: REACTOR VESSEL RC-E-1 VENT TEMP.

RC-TDY/TTY-468 P&ID RC-820846
BLDG/EL: CTL/75' INSTL.
LOC. F-500090 LOOP M-506643(RC SYS)
DESCRIPTION: PRESS. RELIEF TANK RC-TK-11 TEMP.

WLD-TTY-8343 P&ID WLD-820218
BLDG/EL: WFB/25' INSTL.
LOC. F-500312 LOOP M-506906(WLD SYS)
DESCRIPTION: OUTSIDE MISSILE BARRIER VALVE LEAK-OFF TEMP.

WLD-TTY-8348 P&ID WLD-820218
BLDG/EL: WFB/25' INSTL.
LOC. F-500312 LOOP M-506906(WLD SYS)
DESCRIPTION: INSIDE MISSILE BARRIER VALVE LEAK-OFF TEMP.

WLD-LY-1405 P&ID WLD-820218
BLDG/EL: WFB/25' INSTL.
LOC. F-500312 LOOP M-506904(WLD SYS)
DESCRIPTION: REACTOR COOLANT DRAIN TANK LEVEL

WLD-TY-1405-1 P&ID WLD-820218
BLDG/EL: WFB/25' INSTL.
LOC. F-500312 LOOP M-506904(WLD SYS)
DESCRIPTION: REACTOR COOLANT DRAIN TANK TEMP.

WLD-P-5A
WLD-P-5B
WLD-P-5C
WLD-P-5D
LOGIC M-504071(WLD SYS)
DESCRIPTION: SUMP PUMP RUNNING

REFER TO DWS F-500015 FOR DESCRIPTION OF THESE INPUTS

REFER TO DWS F-500016 FOR DESCRIPTION OF THESE INPUTS

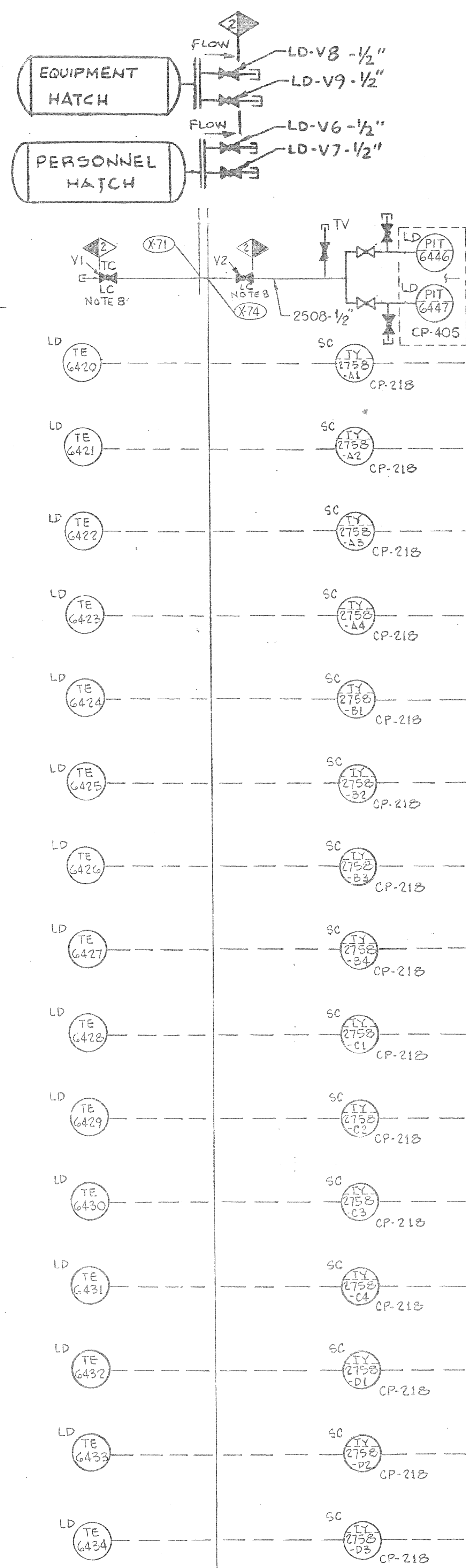
- NOTES:
1. ALL INSTRUMENTS ARE FOR UNIT 1 & 2.
 2. THIS DWS INCLUDES INSTRUMENTS FROM OTHER SYSTEMS USED FOR LEAK DETECTION.
 3. CABLE REQUIREMENT BETWEEN LE UNIT IS (1) RG 59/U COAX (1) 2/C #14 AWG (ONE CONDUCTOR OF 2/C CABLE USED FOR GROUND CONNECTION). MAX. CABLE LENGTH IS 250 FT.
 4. LD-LE-8333-1 (IDENTICAL TO LD-LE-8333) TO BE INSTALLED SPARE. CABLING TO BE RUN FROM LE THROUGH PENETRATION AND COILED NEAR LD-LIT-8333.

REFERENCES:

M-510000 (SIS)
M-500006
SD-25
SD-26
SD-30
SD-32
SD-69
DSD-18M-01
SD-91
F-500037-2,3,4 & 5
M-510004
M-500376

8	11/14	MRB	MRB	ZM	JPS	CA	INCORP EC 12704
REV	DATE	DSGN	DRWN	CHKD	CE	LDE	DESCRIPTION
Seabrook Station							
NEXTERA ENERGY				LEAK DETECTION SYSTEM INSTRUMENTATION ENGINEERING DIAGRAM			
1-NHY-500037-1				REV 8			

CONTAINMENT BLDG.



NOTE 3
DRY BULB (AMBIENT)
TEMP (RTD)

MAIN PLANT COMPUTER SYSTEM (MPCS)			
DIGITAL ALARMS	ANALOG	ANALOG	DIGITAL ALARMS
		A1731 (5)	NONE
		A1732 (5)	NONE
		A1733 (5)	NONE
NONE	SEE NOTE 5	A1734 (5)	NONE
NONE	A1716 (5)	A1735 (5)	NONE
NONE	A1717 (5)	A1736 (5)	NONE
NONE	A1718 (5)	A1737 (5)	NONE
NONE	A1719 (5)	A1738 (5)	NONE
NONE	A1720 (5)	A1739 (5)	NONE
NONE	A1721 (5)	A1740 (5)	NONE
NONE	A1722 (5)	A1741 (5)	NONE
NONE	A1723 (5)	SPARE	NONE
NONE	A1724 (5)	SPARE	NONE
NONE	A1725 (5)	SPARE	NONE
NONE	A1726 (5)	SPARE	NONE
NONE	A1727 (5)	SPARE	NONE
NONE	A1728 (5)	SPARE	NONE
NONE	A1729 (5)	SPARE	NONE
NONE	A1730 (5)		

CONTAINMENT BLDG.

DRY BULB (AMBIENT)
TEMP (RTD)

NOTE 3

DEW POINT
SENSORS

NOTE 4

Non-Functional
Abandoned in place

NOTES:

- ALL INSTRUMENTS ARE FOR UNITS 1 & 2.
- LEAK DETECTION INSTRUMENTS PREFIX "LD".
- CABLE FROM EACH TE OR ME TO THE CORRESPONDING TY OR MT TO BE 1/2 AWG TWISTED SHIELD TRIAD. BOTH ELEMENTS OF EACH DUAL ELEMENT RTD TO BE WIRED THRU PENETRATIONS.
- CABLE FROM MXY TO (6) ME'S TO BE (6) 1/2 AWG TWISTED SHIELDED PAIR.
- COMPUTER INPUT IS 5 1/2 DIGIT BCD TRANSMITTED FROM EITHER PIT. FIELD WIRING IS TO TERMINAL BLOCKS AT CP-405 AND MAY BE MANUALLY SWITCHED BETWEEN PIT'S BY SWITCHING CABLE PLUGS AT CP-405. CABLE REQUIREMENT IS ONE CABLE W/16 TWISTED PAIRS (16AWG) W/OVERALL SHIELD. MAXIMUM CABLE LENGTH IS 1000 FT. THE 21 CUSTOM INPUTS (LOGIC LEVEL) ARE DESIGNATED D5708 THRU D5728. CUSTOM INPUT CARDS @ IRTU 5 MUST PROVIDE A MINIMUM OF 17 BITS OF DATA.
- DELETED

7. DELETED

- NORMALLY LOCKED CLOSE ISOLATION VALVES TO BE LOCATED AS CLOSE TO CONTAINMENT AS POSSIBLE, WITHIN 10 FEET.

REFERENCES:

510000 (SIS)
500006
500037-1,3 & 4
SD 91

510004

7/1/84	-	ANC	CAZ	INCORPORATE 55-046 TCM
6/1/84	-	SM	APL	REVIS K70475 NOT USED FOR LD
				EDITORIAL ONLY REF 805510
				INCORPORATE 05/108-18-B
				INCORPORATE 08/118-18-C
				9763 F-0000-37
				SUPERCEDES JF&C DWG
				DESCRIPTION

LEAK DETECTION SYSTEM
INSTRUMENTATION ENGINEERING DIAGRAM

North Atlantic
Energy Service Corporation

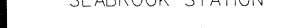
Seabrook
Station

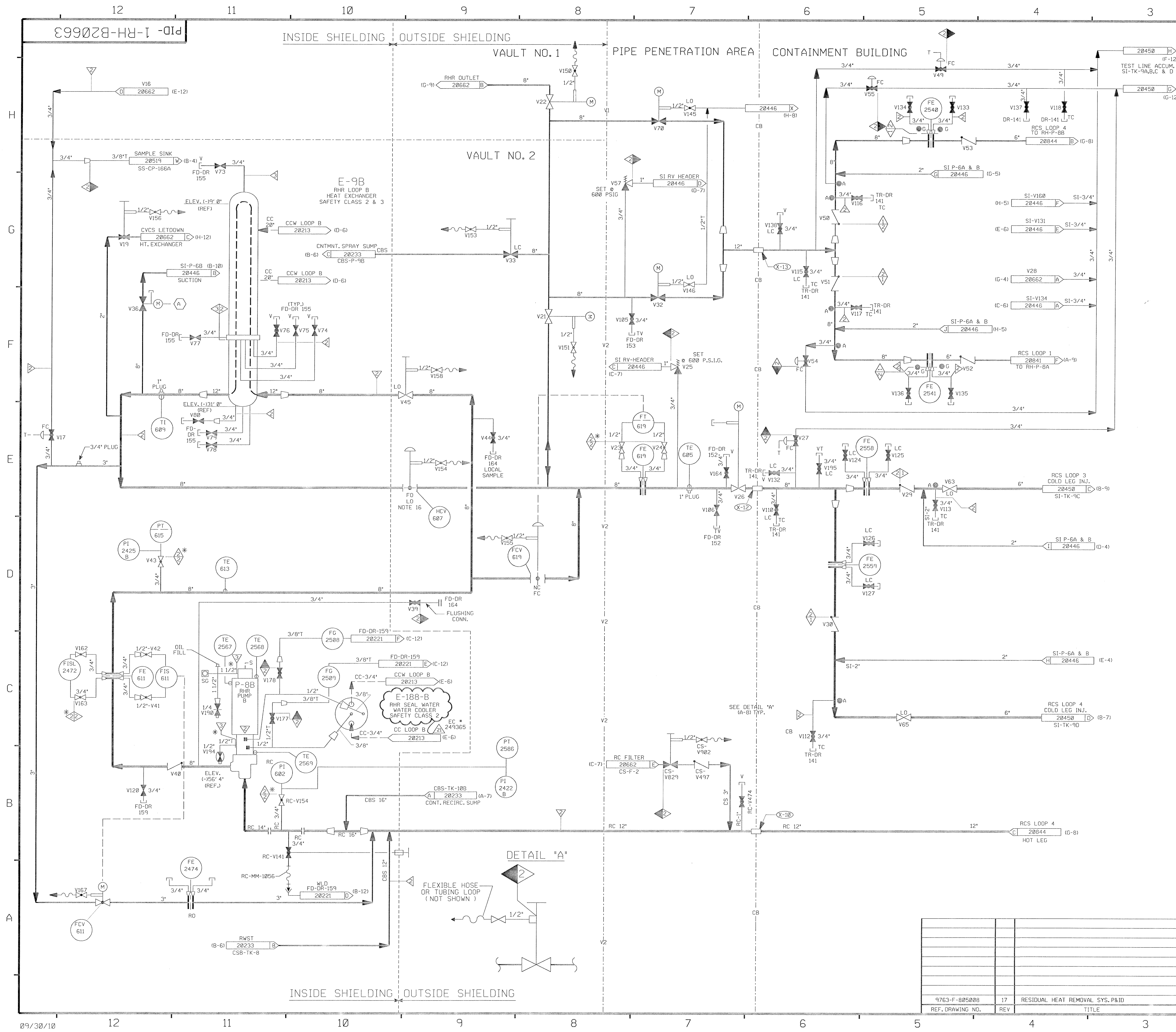
1-NHY-500037-2



NEXTERA ENERGY

SEABROOK

[illegible]



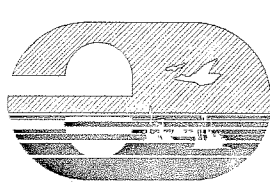
FOR P&ID REFERENCE DRAWINGS, SYMBOLS AND ABBREVIATIONS
REFER TO DRAWINGS P&ID - LEGEND 1 AND P&ID - LEGEND 2

◇ FURTHER ENGINEERING EVALUATION
TO EFFECT ECA 99/115181C.

- NOTES:
1. WORK THIS DRAWING WITH DRAWINGS 20660 & 20662, PORTIONS OF THIS DRAWING ARE DUPLICATED ON DRAWING SI-20446, SI-20448 & SI-20449 DUE TO DUAL SYSTEM FUNCTIONS.
 2. ALL LINES, VALVES, EQUIPMENT, COMPONENTS AND INSTRUMENTS HAVE SYSTEM PREFIX RHL UNLESS NOTED OTHERWISE.
 3. ● INDICATES 3/8\"

PORTIONS OF THIS DRAWING ARE
NUCLEAR SAFETY RELATED

REV	DATE	DSGN	CHKD	CE	DESCRIPTION
21	10/21/06	GPS	JW	BS	INCRP EC 249365
20	10-11-09	BCS	JM	RJF	INCRP EC 12725
19	12-2-00	BCS	JM	RRB	INCRP MMOD 01-515 DCN-00, 01
18	11/26/07	BCS	JM	RRB	INCRP MSE 07-126 REV. 0, MMOD 03-504 DCN-0
17	4/8/05	JM	BCS	RRB	INCRP DCR 02-002 DCN 05 & CLOSED DRAIN VALVES
16	8/22/00	BCS	DWS	ARB	INCRP DCR 99-0036 DCN-00
15	4/7/00	DWS	BCS	MPW	INCRP MMOD 990611 DCN*00
14	9/21/99	DWS	MPW	VWS	REINCRP DCR 090013 CA*00 INCRP, MMOD 99-524 DCN-00
13	11/14/97	BCS	MPW	DMD	PARTIAL INCRP MMOD 91-555 CA0
12	11/22/96	BCL	MPW	DMD	INCRP DCR 95-23 CA0
11	4/10/95	BCL	DWS	JHOC	INCRP DCR 89-54 CA0
10	3/28/94	BCL	MRB	GPM	INCRP MMOD 92-552 CA0
9	10/5/92	MRB	DWS	DMP	INCRP MMOD 92-506 CA0
8	4/17/92	MRB	DWS	RRB	INCRP MMOD 91-515 CA0
7	11/11/89	MRB	PAL	GRM	INCRP DCR 87-422 CA 13, 89-13 CA 03, 88-32 CA0, 87-136 CA11, & 86-712 DRAWING ENHANCEMENTS
6	10/30/87	GPM	DWS	PAS	INCORPORATED DCR 87-349 REV'D PIPING TO REFLECT AS INSTALLED CONF. & TO CLARIFY REDUNDANT SYS. DUPLICATION, DWS CON. NOTES 1, 3, & 8. ADDED DET. 'A' NOTE FOR VLV CS-V829. NEW FLOW RESTRICTOR INDICATOR SYM. OPEN ITEM NO. 1 & NOTE 15. DELETED NOTES 4, 9, 10 & 14. REF. DWS'S, PIPING SPEC BRKS PER NOTE 8, INCOMP. ITEM, INS-1 LL BOUNDARY. REVISED RC-V54 TO BE SHOWN OPEN PER LOOP DIA. 206623, INCRP NCR 82/8950, ADDED INCOMPLETE ITEM.
5	11/26/86	MRJ	WRD	RRR	ADDED ASME CLASS BREAKS AND PIPE LINE SIZES PER USEC P&ID. ADDED DRAIN INFO. PER ECA 99/115181C. CONTINUATION FLAG REFS. ADDED. ADDED REF. DWGS. AND NOTE 14, DELETED NOTE 13.
4	10/9/86	MRJ	MAP	RRR	INCRP NCR 73/48044. ADD ECA TO INCRP ITEMS. INCRP ECA 99/115181A & 99/112913B.
3	6-12-86	JDM	DWS	RRR	ECA 05/103888A. ISSUED FOR OPERATIONS.
2	1/29/86	DEE	DWS	ERD	UPDATED FORMAT & DWG INTERFACES.
1	4/19/85	DWS	TAK	WFD	INCRP ECA 99/19778 & 99/1974A.
0	11/04/84	DWS	RSL	REF	ISSUED FOR FIELD VERIFICATION.

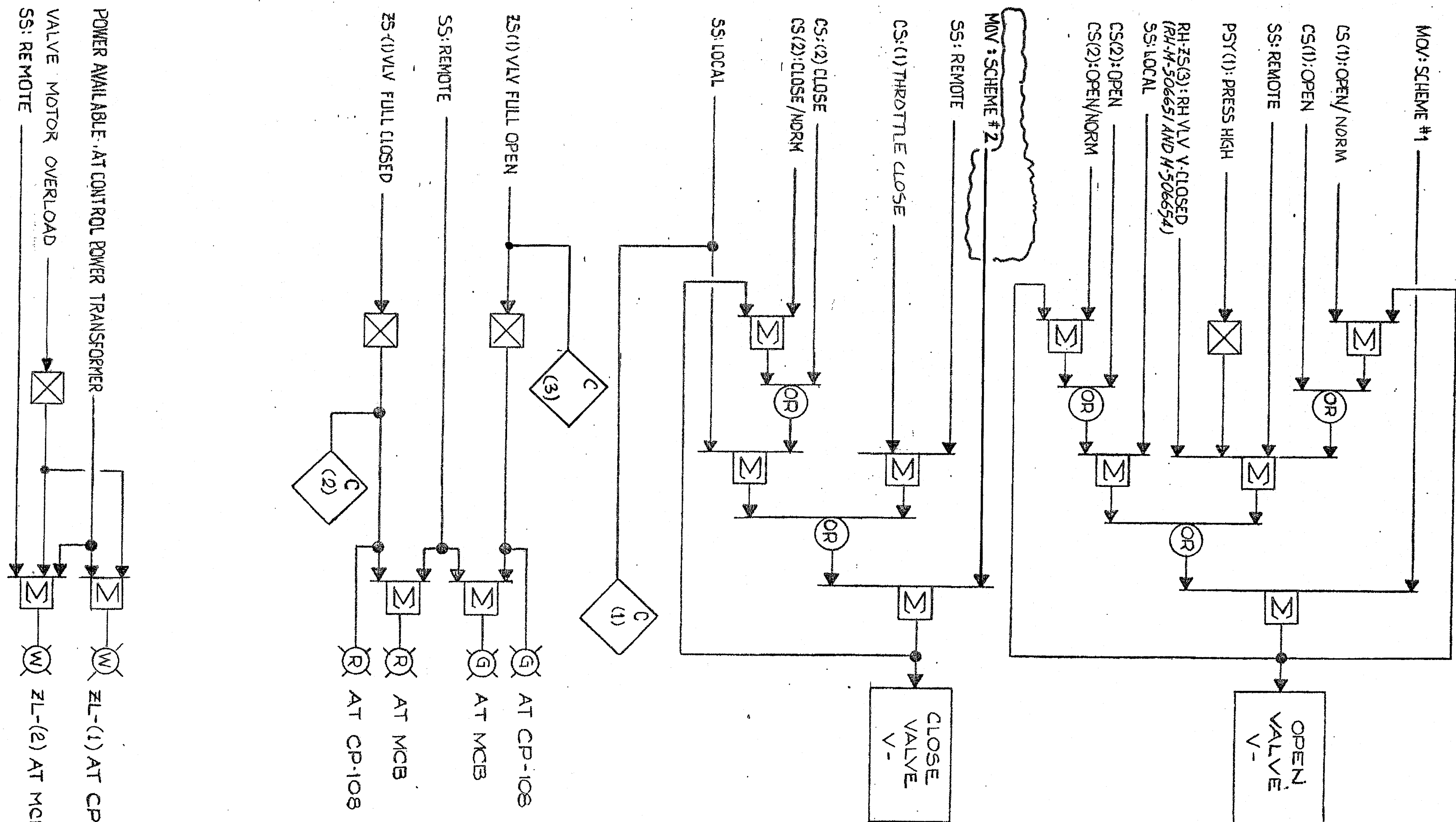


NEXTERA ENERGY
SEABROOK

RESIDUAL HEAT REMOVAL SYS.
TRAIN B CROSS-TIE
DETAIL

PID- 1-RH-B20663

REV	DATE	DSGN	CHKD	CE	DESCRIPTION
17	9763-F-805008	REF. DRAWING NO.			
16					
15					
14					
13					
12					
11					
10					
9					
8					
7					
6					
5					
4					
3					
2					
1					
0					



SEE DWG. M-503748 FOR
TABULATION & NOTES

THIS DWG SUPERSEDES
9763-M-500010 SHT 82 REV-P1

ISSUED-FOR-CONSTRUCTION

REV	DATE	DRWN	CHKD	CE	LDE	DESCRIPTION
15	8/21/99	MRJ	JWB	RPN	RWM	INCORP DCR 97-21 DCN-15
14	8/23/98	JWB	MRB	JWR	CM	PART OF DCR 97-21 DCN-13
13	6/12/97	MRB	JWB	JPS	RWM	PARTIAL INCORP. DCR 97-21, DCN-0
12	6-5-97	MRB	JWB	JPS	JPS	INCORP. DCR 97-021, DCN-0
11	8/29/91	MRB	GPM	APL	RPN	INCORP: DCR 89-24, CA- DCR 86-239, CA-1
10	3/26/87	BCE	HK	TPN	RPN	ECA 05/118 202 B 9763-M-503747 AND SUPERCEDES UE&C DWG. 5

NUCLEAR SAFETY RELATED

RC-ISOLATION VALVES
LOGIC DIAGRAM

New Hampshire
Yankee

Seabrook
Station

1-NHY- 503747 REV 15

DWG. TRANSFERRED TO CUSTODY
OF NHY AT REV. 6
LTR. 5104A0729 DTD. 10-21-86

CONTINUED FROM DMG M-503747

TRAIN	VALVE No. V-	CS (1)	ZL (1)	PSY-(1)	RH ZS (3)	ZS -(1)	FR 30001 SHT-	COMPUTER ID/IRTN		
		CS (2)	ZL-(2)	SS -	PSY-(2)	RH-V		(1)	(2)	(3)
B	V22	7302-1		7302-1	403A	2465-B	370	D7442	D4446	D7467
		7302-2	7302-2	7302		V35		4	6	5
A	V23	7303-1		7303-1	405A	2465-A	369	D7440	D4447	D7469
		7303-2	7303-2	7303		V35		3	5	7
A	V88	7311-1		7311-1	405A	2466-A	371	D7441	D4449	D7464
		7311-2	7311-2	7311		V36		3	5	6
B	V87	7310-1		7310-1	403A	2466-B	372	D7443	D4448	D7468
		7310-2	7310-2	7310		V36		4	6	6

THIS DWG SUPERSEDES
9763-M-500010 SH 83 REV P1

NUCLEAR SAFETY RELATED

RC-ISOLATION VALVES LOGIC DIAGRAM

New Hampshire
Yankee

Seabrook Station

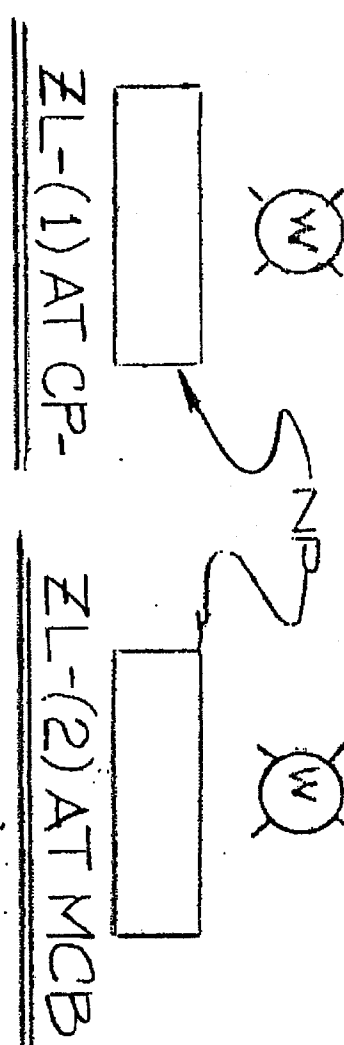
1-NHY- 503748	REV 10
---------------	--------

ZOTEF

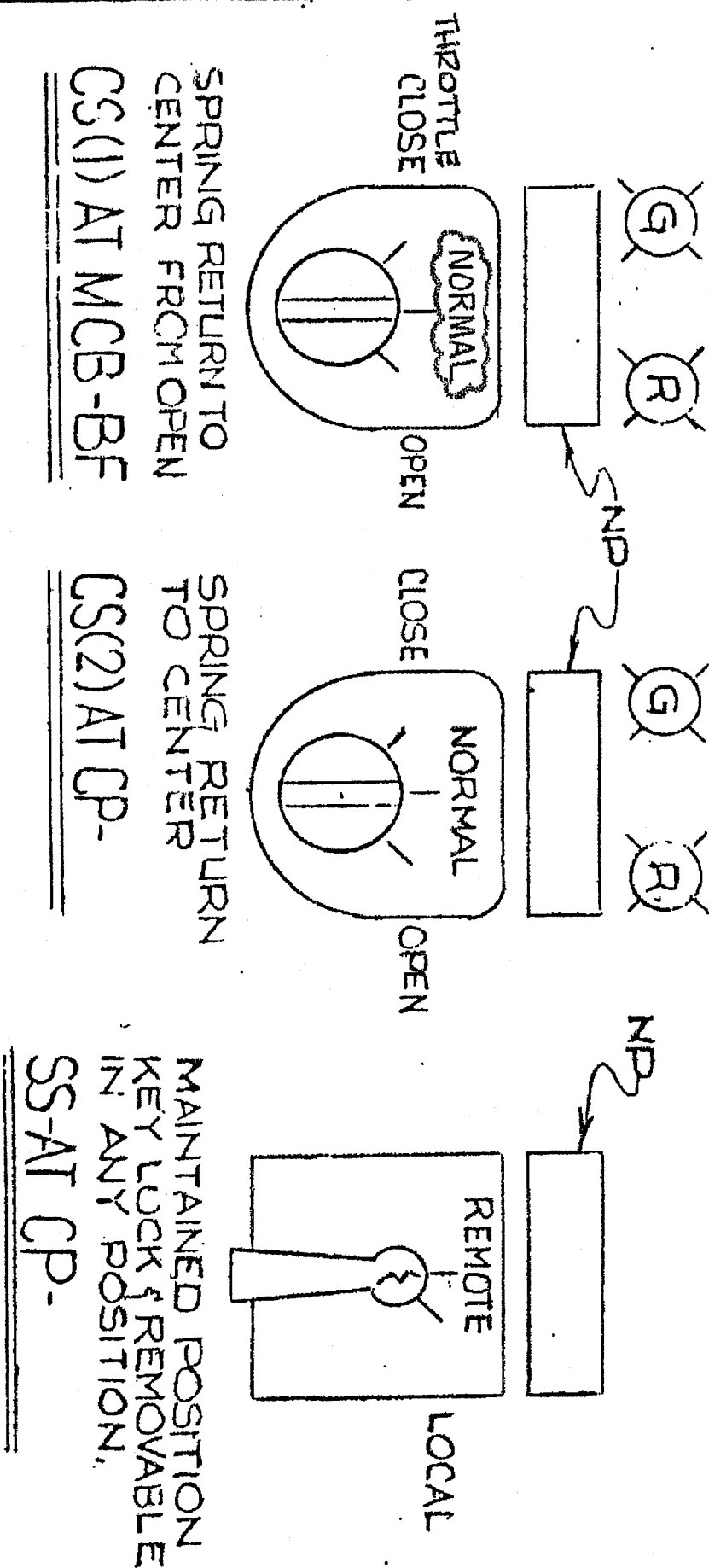
1. FOR DESCRIPTION OF LOGIC SYMBOLS SEE M-503100.
2. ZS-(1) LIMIT SWITCH ARE MOUNTED INSIDE MOTOR.


REFERENCE DOCUMENTS

EXP. NO. (SEE TABLE)
SD-NAH/NCH-281
M-506635
M-506636
M-503747
RH-M-506651
RH-M-506654
C-509036



(PART OF THIS DING. WAS PART
OF M-503747)

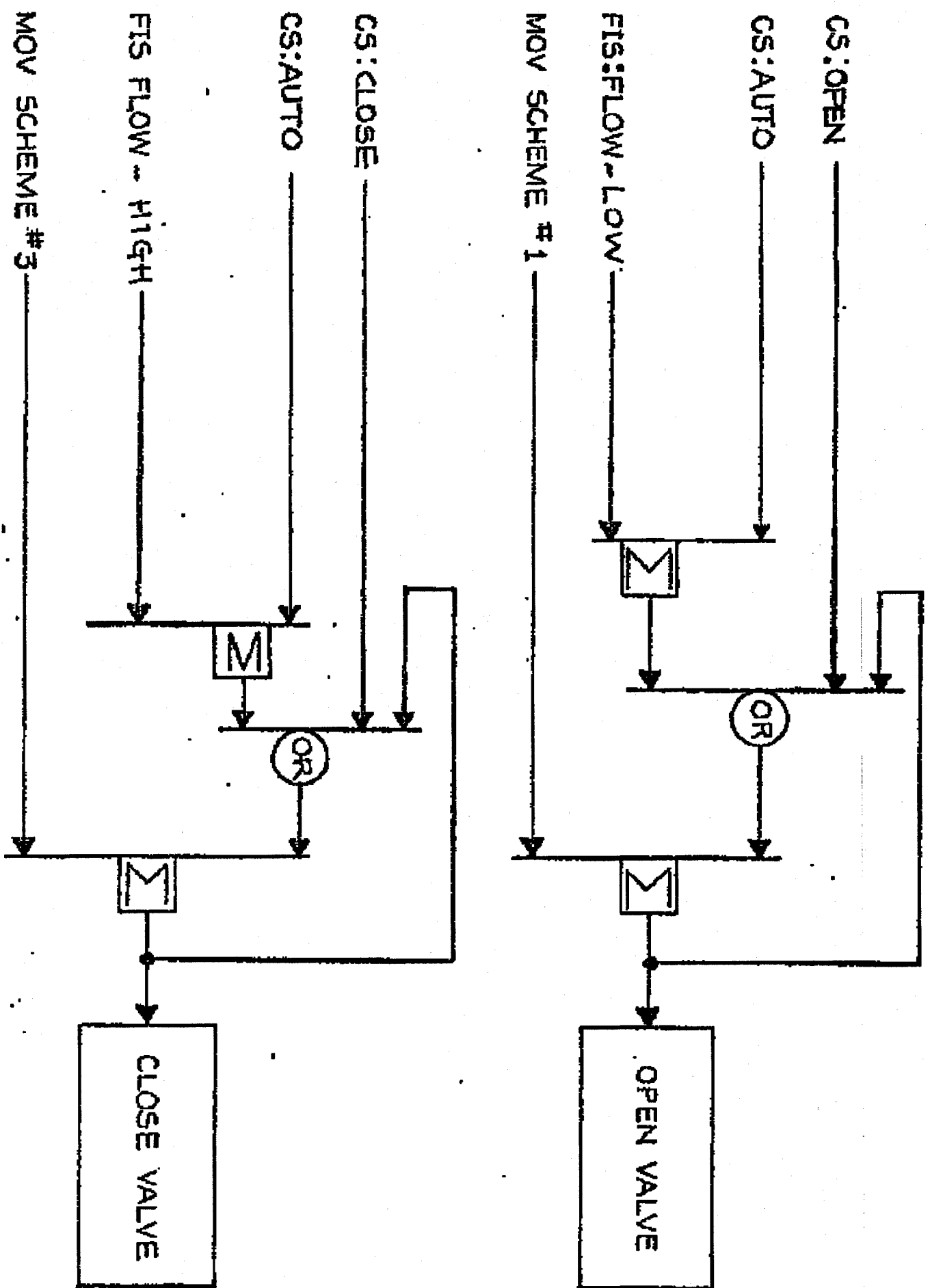


10	6-5-97	MRB	JWB	JPS	JPS	INCORP. DCR 97-021, DCN 00
9	8/29/91	MLL	AMR	WHZ	RPN	INCORP. DCR 86-239, CA-1
8	3/26/97	ACE	HK	TPN		INCORP. ECA 05/118202B 9763-M-503748 AND SUPERCEDES UE&C DWG.
REV	DATE	DRWN	CHKD	CE	LDE	DESCRIPTION

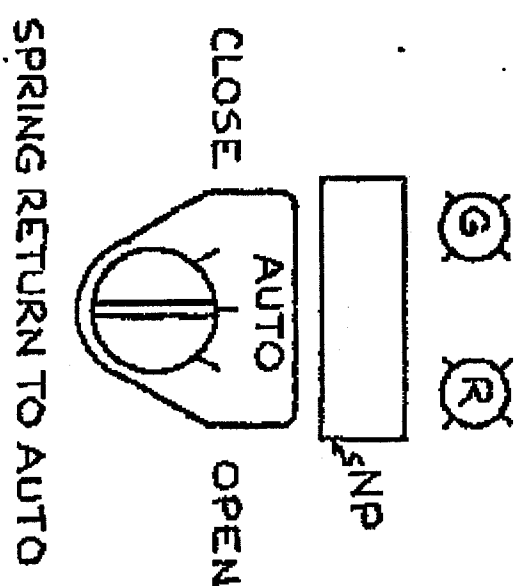
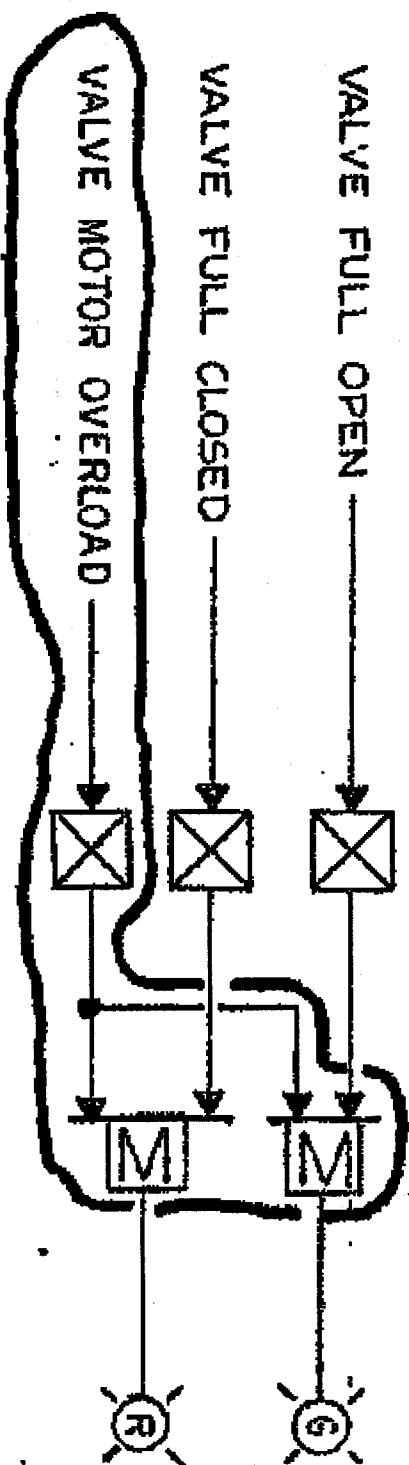
7	2/1/84	REV'D PER DCN 630076A EDITORIAL CHANGES	RPN	JT	AL GT	DPW	RPN
REV NO	DATE	DESCRIPTION	PE	DWN BY	AKD BY	RES ENG	SDE

1-NHY - 503748	REV
----------------	-----

14



TRAIN	RH PUMP RECIRC. VLV FCV-	CS-	FIS-	LOGIC REF FP-30001 SH.
A	610	610	610	212
B	611	611	611	213



CS AT MCB

ISSUED-FOR-CONSTRUCTION

NUCLEAR SAFETY RELATED

RH PUMPS LOW FLOW RECIRC VLVS
LOGIC DIAGRAM

New Hampshire
Yankee

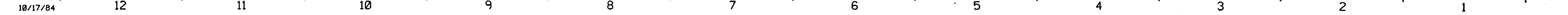
Seabrook
Station

1-NHY- 503764

6	2-28-85	SB-16055	RPN	EM	HK	LRV	RPN	-	-
5	11-15-80	DCN 03-0884A		JAW	M	JFO	RPN	-	-
4	2-14-80	REV'D REFERENCE		IO	W	JFB	IR	-	-
3	5-3-78	REV'D NOTE 1		ME	CE	JIC	AL	-	-
9	4/2/81	HP	APL	CEM	JFB	DCR 86-403, CA-4, TRN 'B'			
8	3/2/81	HP	APL	CEM	BER	DCR 86-403, CA-0, TRN 'A'			
7	3/2/81	RCE	HK	TPN	N/A	9763-M-503764 SUPERCEDES UE&C DWG3			
REV	DATE	DRWN	CHKD	CE	LDE	DESCRIPTION			

NOTES
1-FOR DESCRIPTION OF LOGIC
SYMBOLS SEE M-503100

REFERENCE DOCUMENTS
9763-M-506650
9763-F-805008
9763-M-506653
SD-NAH/NCH-283



PID- 1-RH-B20660

5 4 3