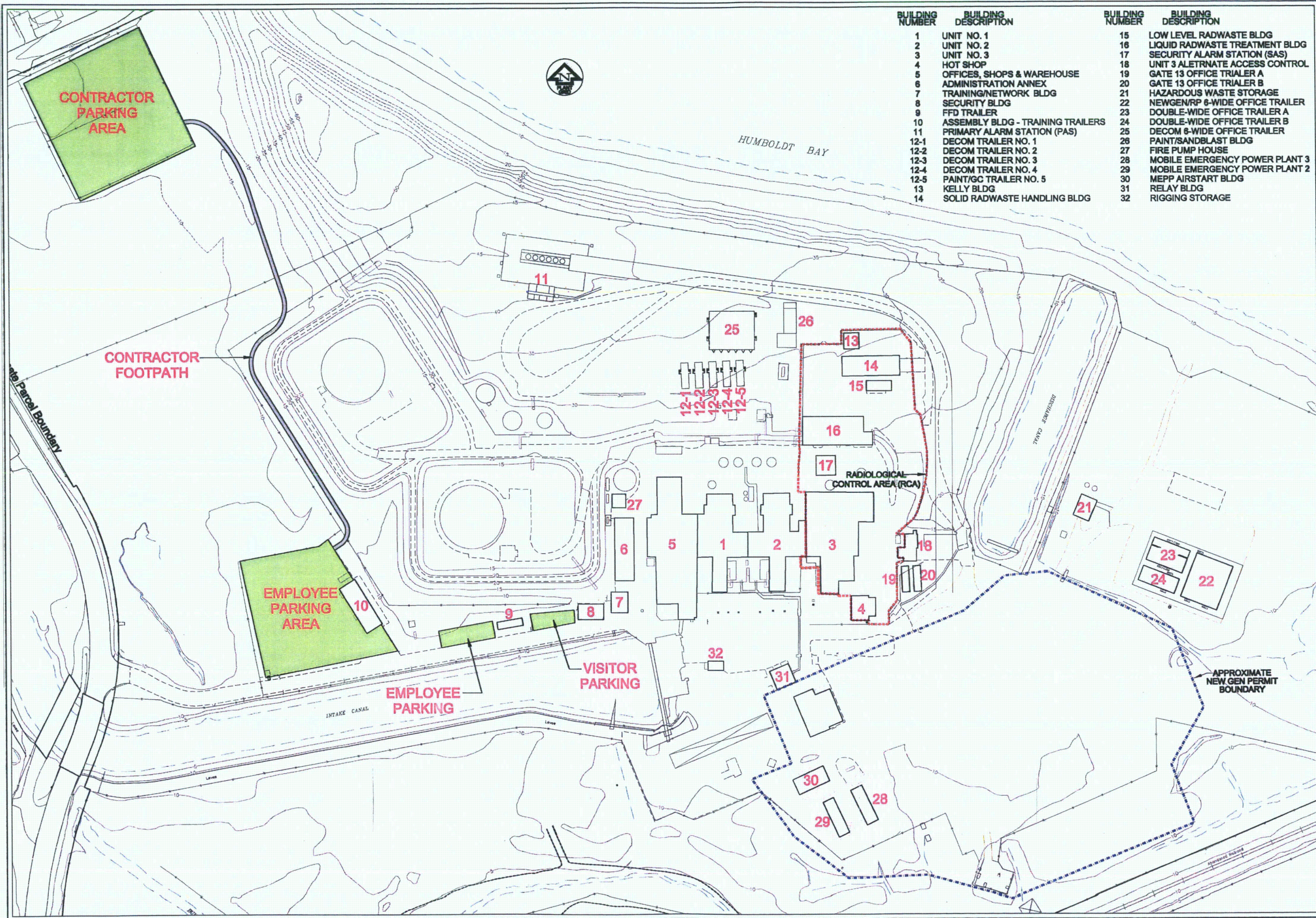


Appendix E

2008 Characterization Results for Surface and Subsurface Soils



BUILDING NUMBER	BUILDING DESCRIPTION	BUILDING NUMBER	BUILDING DESCRIPTION
1	UNIT NO. 1	15	LOW LEVEL RADWASTE BLDG
2	UNIT NO. 2	16	LIQUID RADWASTE TREATMENT BLDG
3	UNIT NO. 3	17	SECURITY ALARM STATION (SAS)
4	HOT SHOP	18	UNIT 3 ALTERNATE ACCESS CONTROL
5	OFFICES, SHOPS & WAREHOUSE	19	GATE 13 OFFICE TRIALER A
6	ADMINISTRATION ANNEX	20	GATE 13 OFFICE TRIALER B
7	TRAINING/NETWORK BLDG	21	HAZARDOUS WASTE STORAGE
8	SECURITY BLDG	22	NEWGEN/RP 6-WIDE OFFICE TRAILER
9	FFD TRAILER	23	DOUBLE-WIDE OFFICE TRAILER A
10	ASSEMBLY BLDG - TRAINING TRAILERS	24	DOUBLE-WIDE OFFICE TRAILER B
11	PRIMARY ALARM STATION (PAS)	25	DECOM 6-WIDE OFFICE TRAILER
12-1	DECOM TRAILER NO. 1	26	PAINT/SANDBLAST BLDG
12-2	DECOM TRAILER NO. 2	27	FIRE PUMP HOUSE
12-3	DECOM TRAILER NO. 3	28	MOBILE EMERGENCY POWER PLANT 3
12-4	DECOM TRAILER NO. 4	29	MOBILE EMERGENCY POWER PLANT 2
12-5	PAINT/GC TRAILER NO. 5	30	MEPP AIRSTART BLDG
13	KELLY BLDG	31	RELAY BLDG
14	SOLID RADWASTE HANDLING BLDG	32	RIGGING STORAGE

REVISIONS

NO.	DATE	DESCRIPTION
1		

ENERCON

Engineering & Construction

HUMBOLDT BAY POWER PLANT

CAMPUS MAP

PACIFIC GAS & ELECTRIC COMPANY

EUREKA, CALIFORNIA

SCALE: N.T.S.

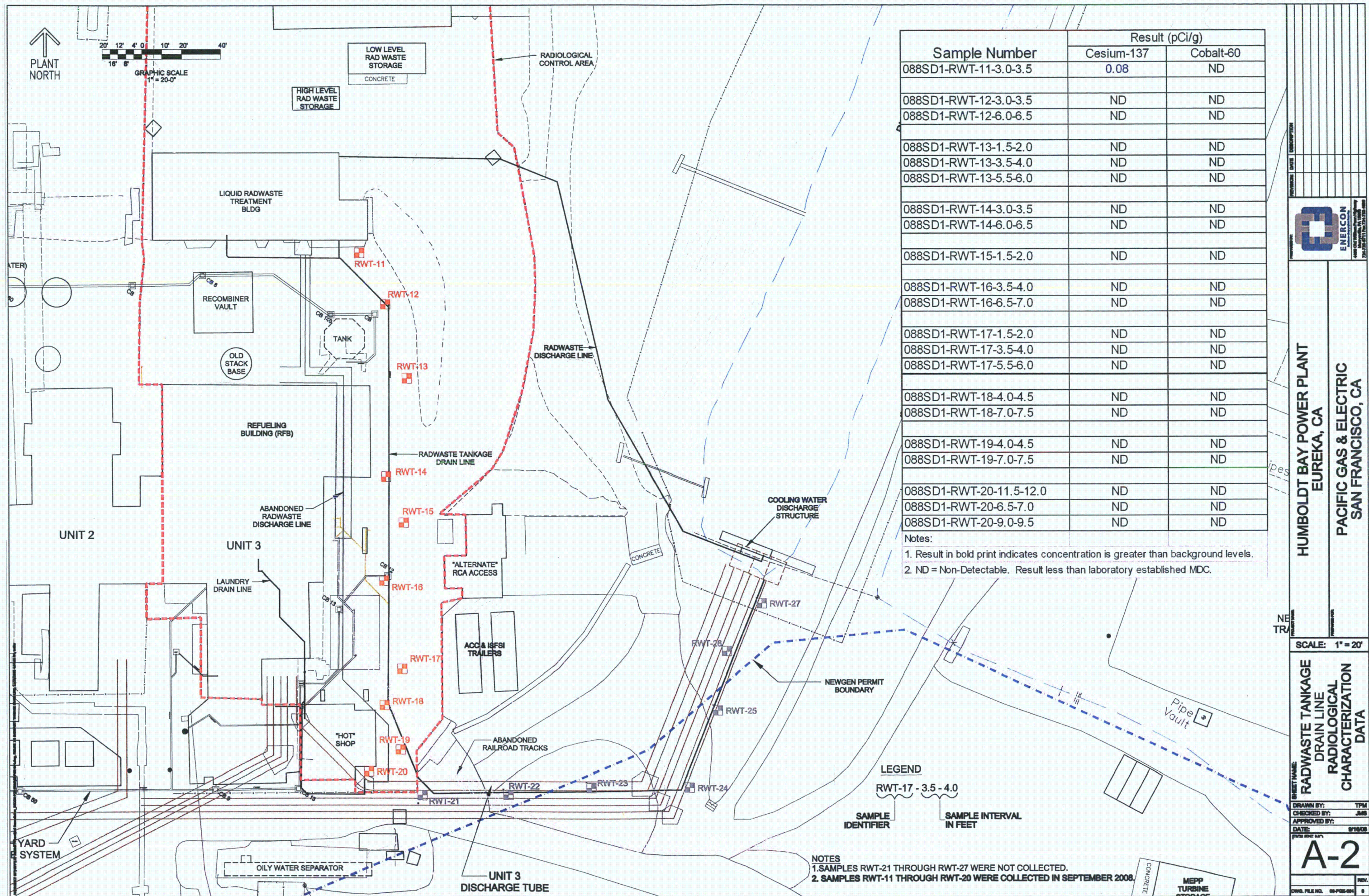
SHEET NAME:
BUILDING NUMBERS

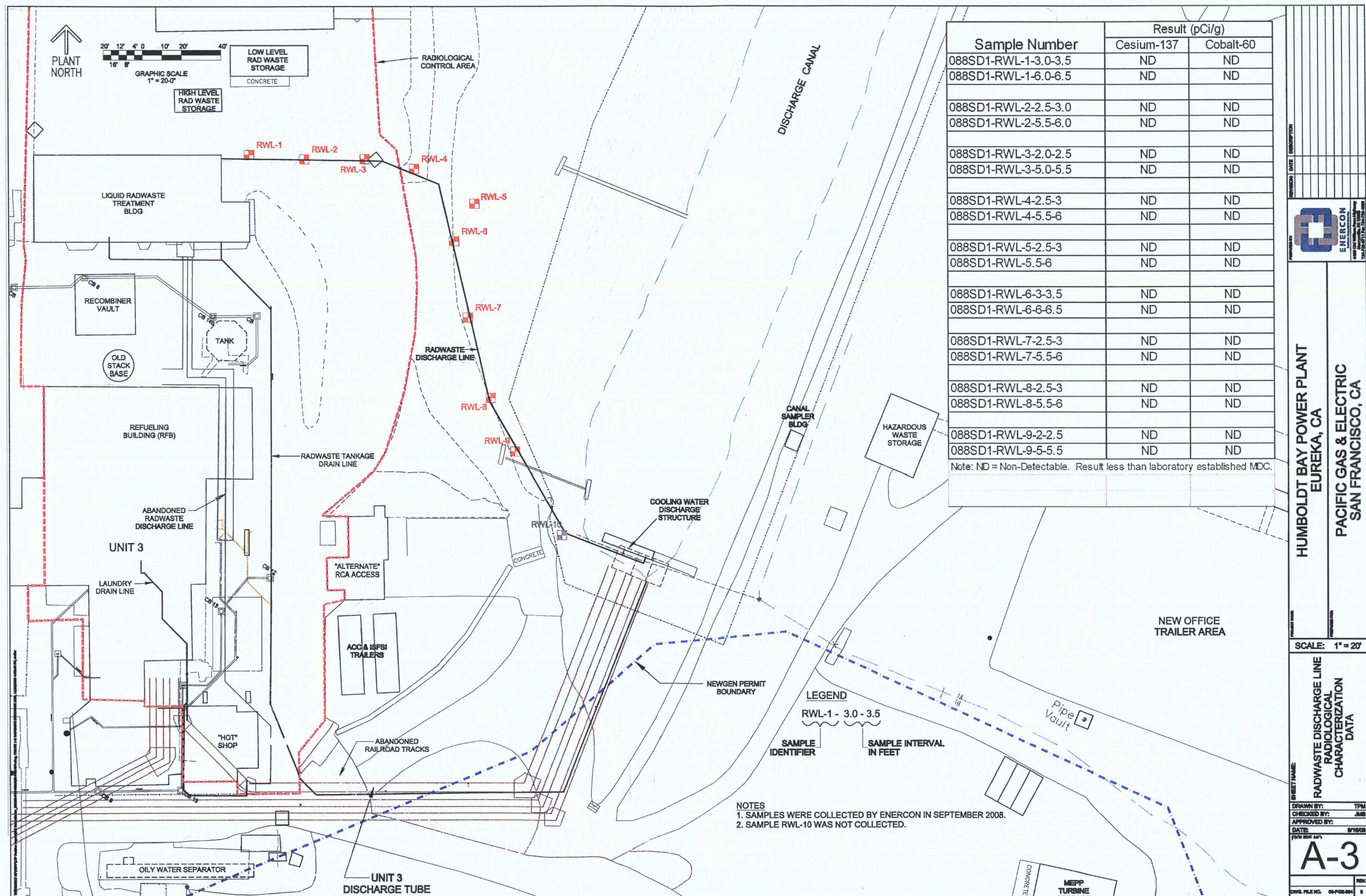
DRAWN BY: TPM
CHECKED BY: CED
APPROVED BY:
DATE: 9/23/08
SHEET NO. 1 OF 1
A-1

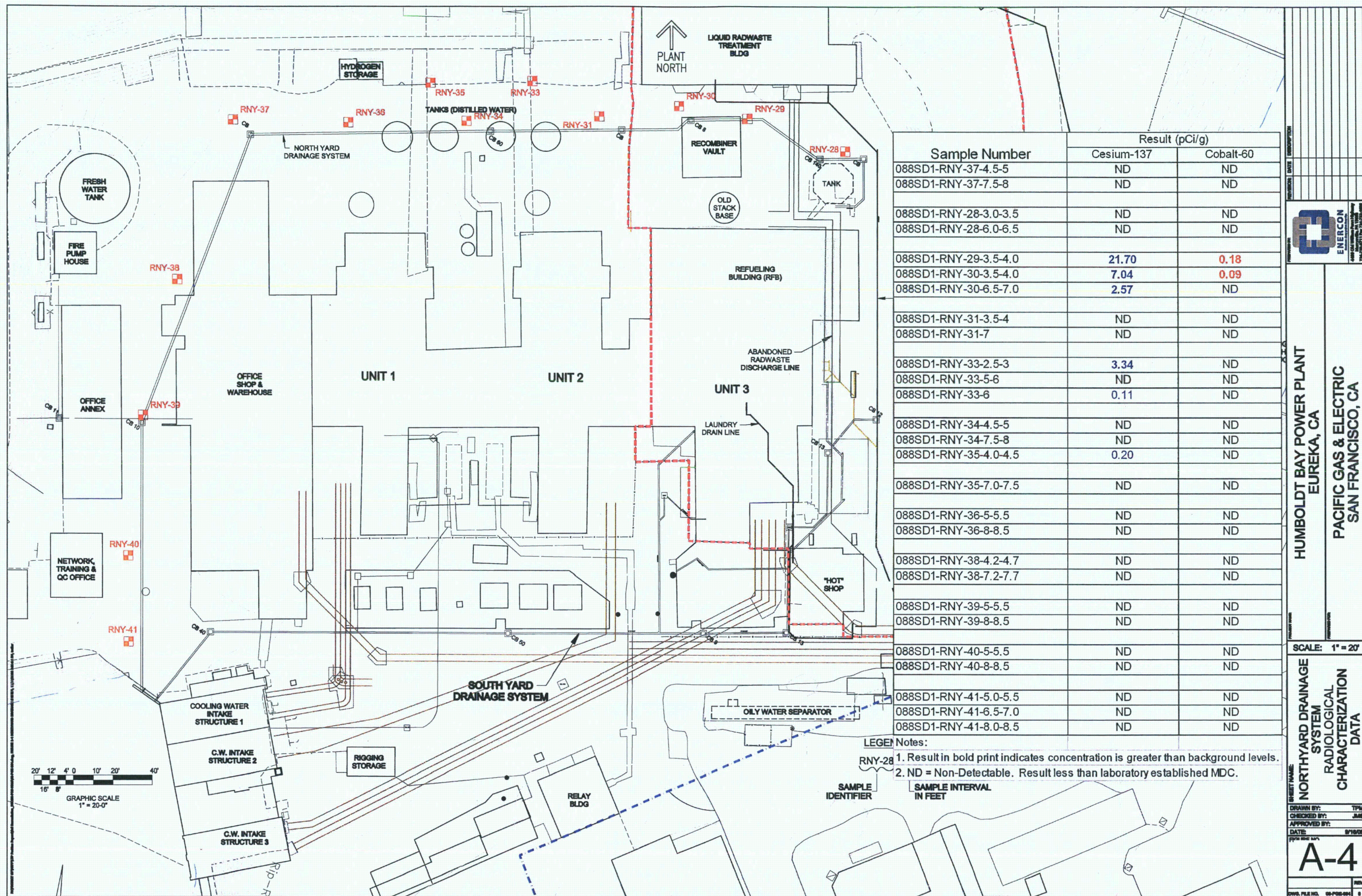
OWB, FILE NO. 08-PGS-001

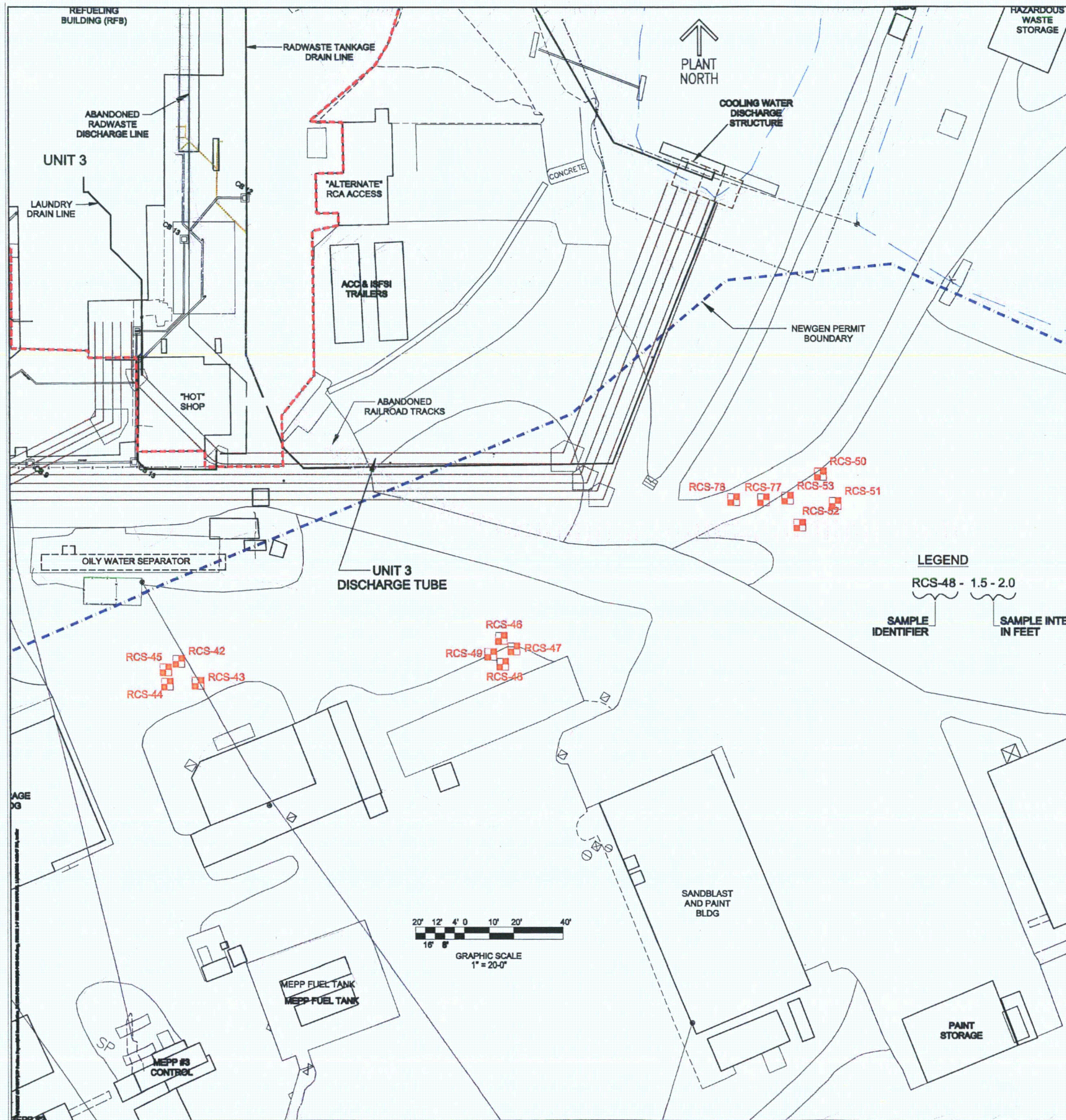
REV. 1

E-1









Sample Number	Result (pCi/g)	
	Cesium-137	Cobalt-60
088SD1-RCS-42-4-4.5	ND	ND
088SD1-RCS-42-5-5.5	0.19	ND
088SD1-RCS-43-4-4.5	ND	ND
088SD1-RCS-43-5-5-6	ND	ND
088SD1-RCS-44-4-4.5	ND	ND
088SD1-RCS-44-5-5-6	ND	ND
088SD1-RCS-45-4-4.5	ND	ND
088SD1-RCS-46-0-.5	0.31	ND
088SD1-RCS-46-1-5-2	ND	ND
088SD1-RCS-47-0-.5	0.06	ND
088SD1-RCS-47-1-5-2	ND	ND
088SD1-RCS-48-0-.5	0.31	ND
088SD1-RCS-48-1-5-2	ND	ND
088SD1-RCS-49-0-.5	0.55	ND
088SD1-RCS-49-1-5-2	ND	ND
088SD1-RCS-50-3-3.5	ND	ND
088SD1-RCS-50-4-5-5	ND	ND
088SD1-RCS-51-3-3.5	ND	ND
088SD1-RCS-51-4-5-5.0	ND	ND
088SD1-RCS-52-3-3.5	ND	ND
088SD1-RCS-52-4-5-5.0	ND	ND
088SD1-RCS-53-3-4.5	ND	ND
088SD1-RCS-53-4-5-5.0	ND	ND
088SD1-RCS-77-3-3.5	0.09	ND
088SD1-RCS-77-4-5-5.0	0.15	ND

Notes:
1. Result in bold print indicates concentration is greater than background levels.
2. ND = Non-Detectable. Result less than laboratory established MDC.

ENERCON

7200 SHAW BLVD
SAN FRANCISCO, CA 94121
415-774-1700

HUMBOLDT BAY POWER PLANT
EUREKA, CA

PACIFIC GAS & ELECTRIC
SAN FRANCISCO, CA

NEW GEN AREA
RADIOLOGICAL
CHARACTERIZATION
DATA

DRAWN BY: TFM

CHECKED BY: JAB

APPROVED BY:

DATE: 8/18/03

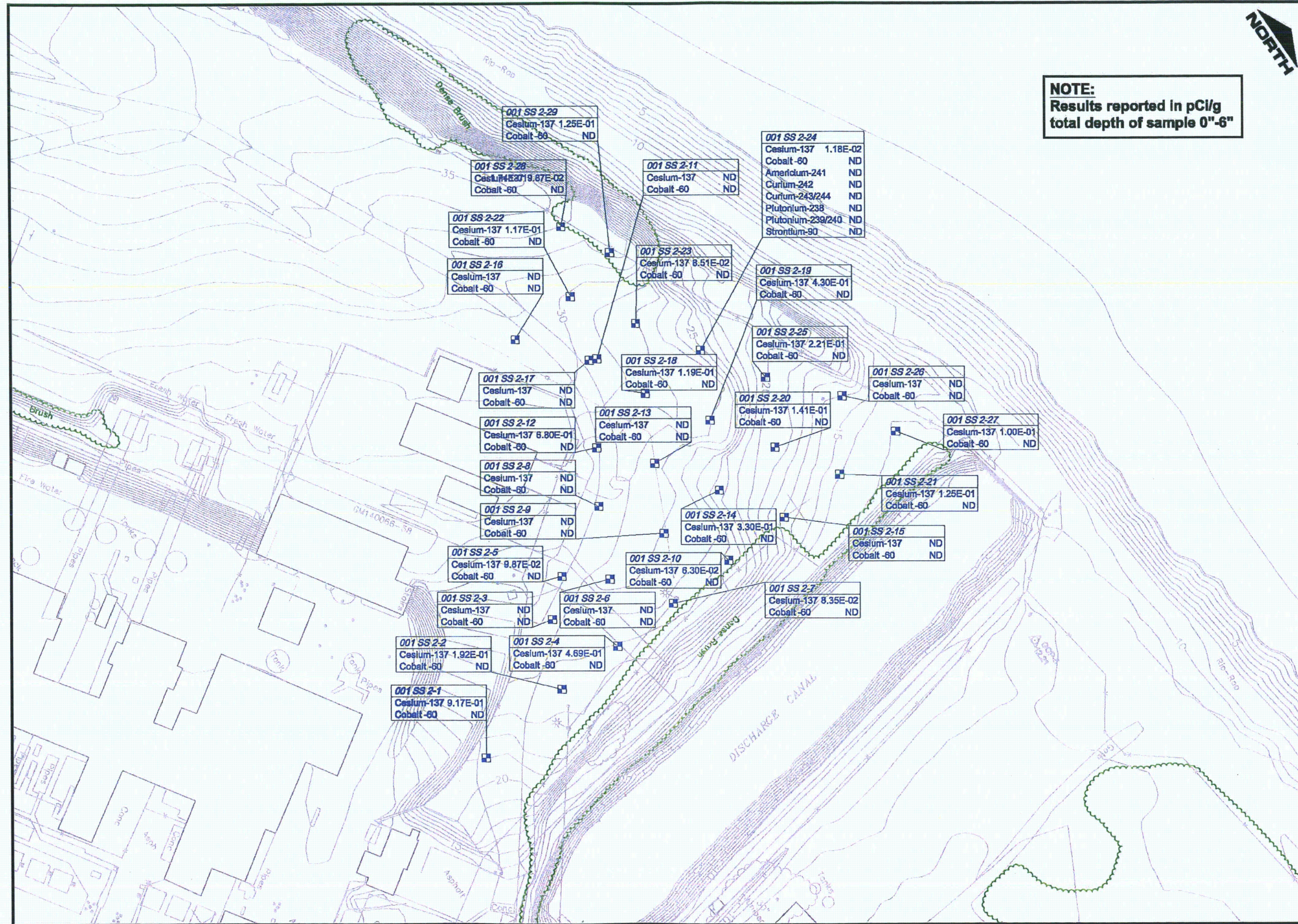
A-5

REV.

SCALE: 1" = 20'

DWG. FILE NO. 00-PGE-004

E-5



NOTE:
Results reported in pCi/g
total depth of sample 0"-6"

001 SS 2-29
Cesium-137 1.25E-01
Cobalt-60 ND

001 SS 2-28
Cesium-137 9.87E-02
Cobalt-60 ND

001 SS 2-22
Cesium-137 1.17E-01
Cobalt-60 ND

001 SS 2-16
Cesium-137 ND
Cobalt-60 ND

001 SS 2-11
Cesium-137 ND
Cobalt-60 ND

001 SS 2-24
Cesium-137 1.18E-02
Cobalt-60 ND
Americium-241 ND
Curium-242 ND
Curium-243/244 ND
Plutonium-238 ND
Plutonium-239/240 ND
Strontium-90 ND

001 SS 2-23
Cesium-137 8.51E-02
Cobalt-60 ND

001 SS 2-19
Cesium-137 4.30E-01
Cobalt-60 ND

001 SS 2-25
Cesium-137 2.21E-01
Cobalt-60 ND

001 SS 2-17
Cesium-137 ND
Cobalt-60 ND

001 SS 2-18
Cesium-137 1.19E-01
Cobalt-60 ND

001 SS 2-26
Cesium-137 ND
Cobalt-60 ND

001 SS 2-12
Cesium-137 6.80E-01
Cobalt-60 ND

001 SS 2-13
Cesium-137 ND
Cobalt-60 ND

001 SS 2-20
Cesium-137 1.41E-01
Cobalt-60 ND

001 SS 2-27
Cesium-137 1.00E-01
Cobalt-60 ND

001 SS 2-8
Cesium-137 ND
Cobalt-60 ND

001 SS 2-9
Cesium-137 ND
Cobalt-60 ND

001 SS 2-14
Cesium-137 3.30E-01
Cobalt-60 ND

001 SS 2-21
Cesium-137 1.25E-01
Cobalt-60 ND

001 SS 2-5
Cesium-137 9.87E-02
Cobalt-60 ND

001 SS 2-10
Cesium-137 6.30E-02
Cobalt-60 ND

001 SS 2-15
Cesium-137 ND
Cobalt-60 ND

001 SS 2-3
Cesium-137 ND
Cobalt-60 ND

001 SS 2-6
Cesium-137 ND
Cobalt-60 ND

001 SS 2-7
Cesium-137 8.35E-02
Cobalt-60 ND

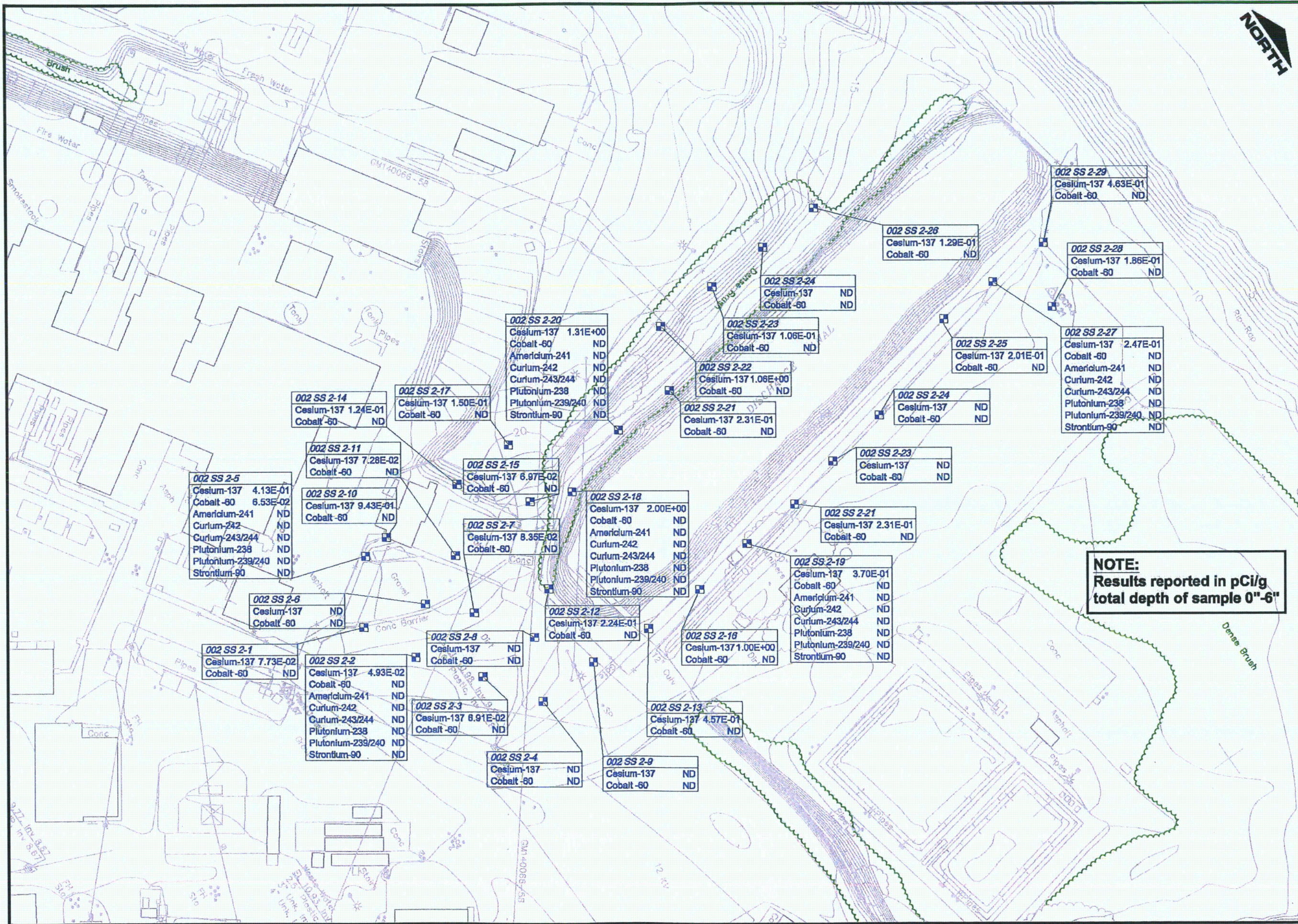
001 SS 2-2
Cesium-137 1.92E-01
Cobalt-60 ND

001 SS 2-4
Cesium-137 4.69E-01
Cobalt-60 ND

001 SS 2-1
Cesium-137 9.17E-01
Cobalt-60 ND

SURFACE SOIL SAMPLE
AREA 001 SS 2
PACIFIC GAS & ELECTRIC
HUMBOLDT BAY

SHEET NAME:
SCALE: 1"=60'
FIGURE:
001 SS2
DWG. NO. 08-PGE-004



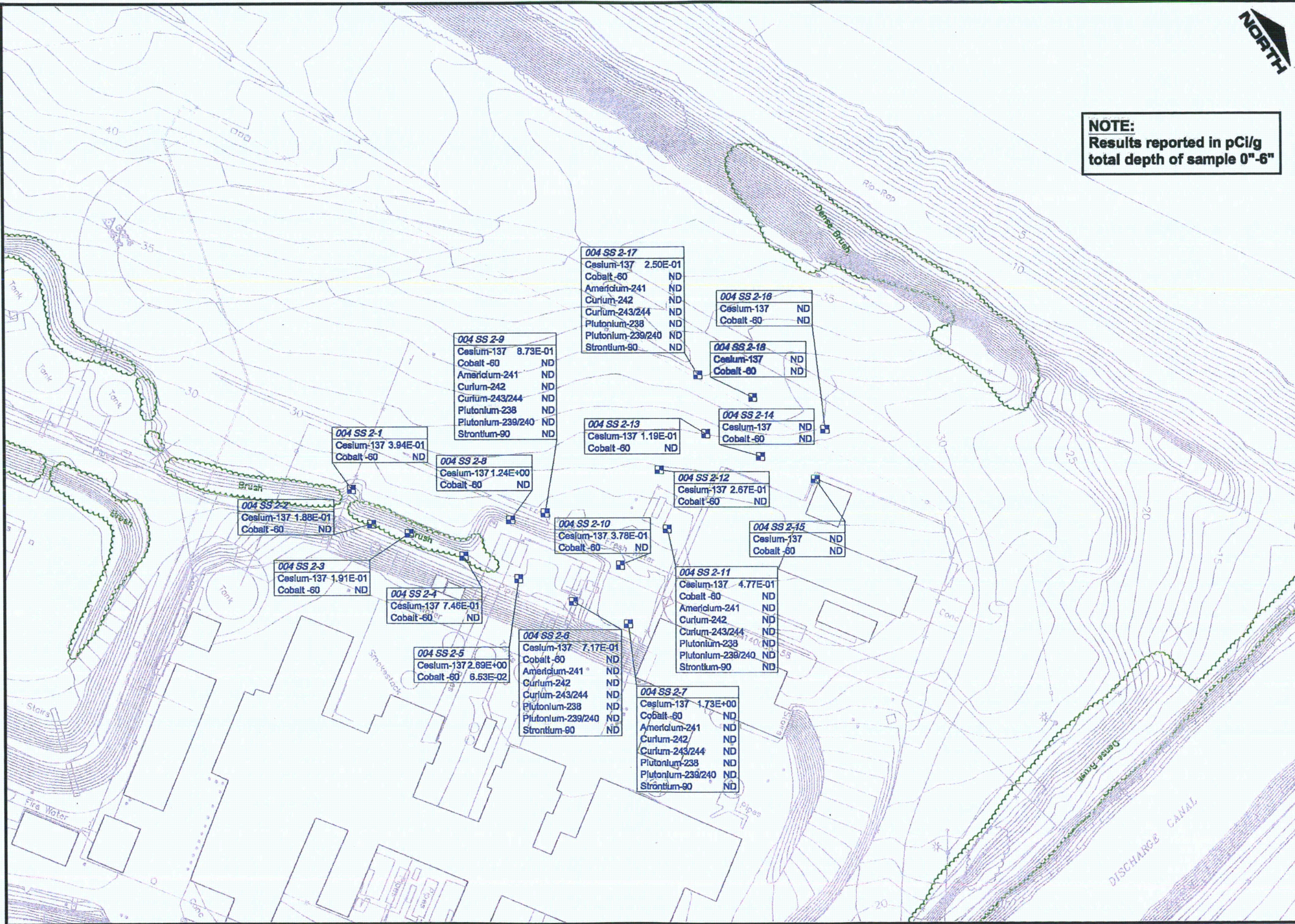
NOTE:
Results reported in pCi/g
total depth of sample 0"-6"

**SURFACE SOIL SAMPLE
AREA 002 SS 2
PACIFIC GAS & ELECTRIC
HUMBOLDT BAY**

DATE:	02/28/08
APPROVED BY:	N/A
CHECKED BY:	DA
DRAWN BY:	TM

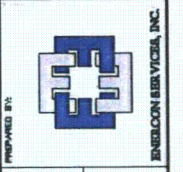


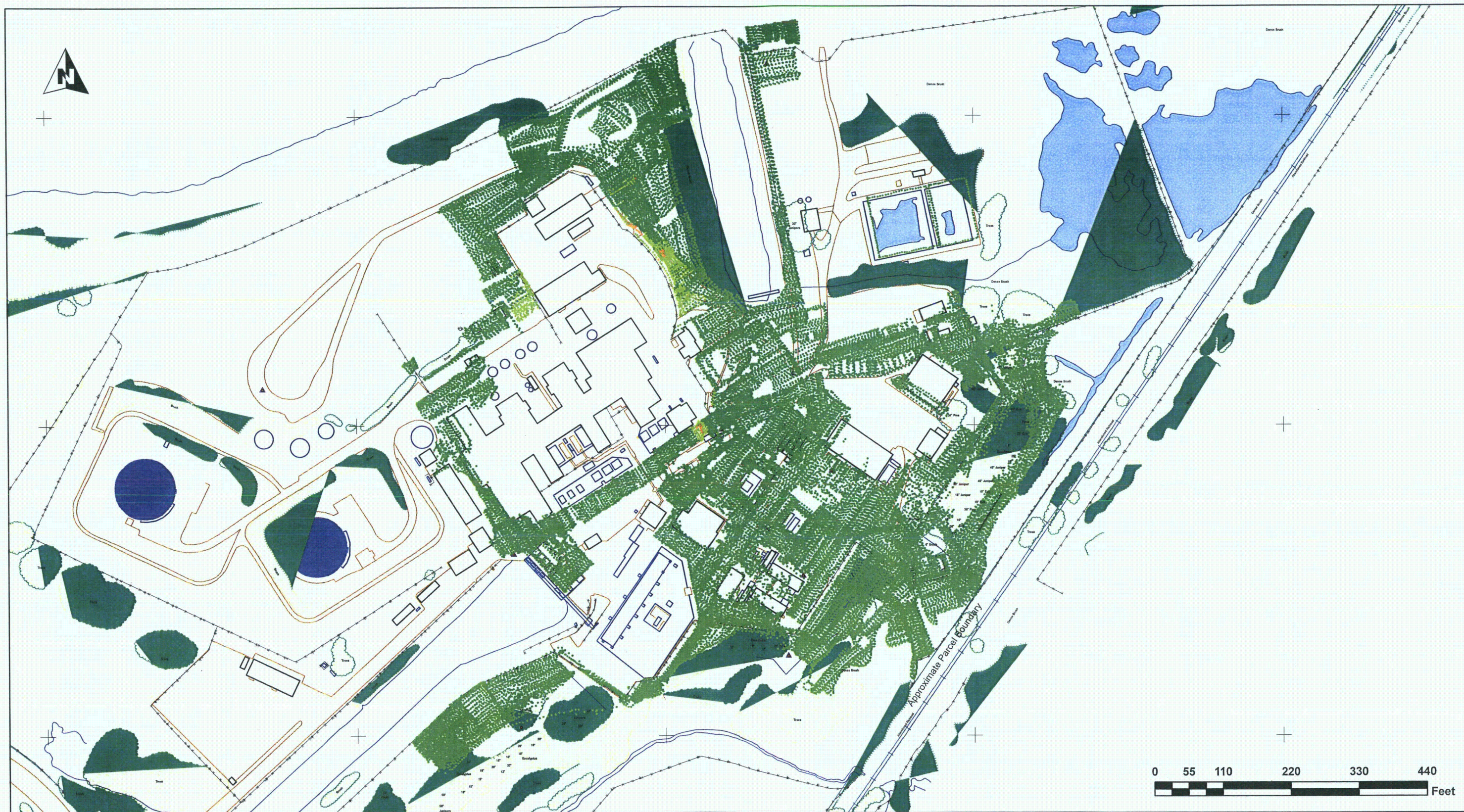
SHEET NAME:
SCALE: 1"=60'
FIGURE:
002 SS2
DWG. NO. 08-PGE-004



**SURFACE SOIL SAMPLE
AREA 004 SS 2
PACIFIC GAS & ELECTRIC
HUMBOLDT BAY**

SHEET NAME:
SCALE: 1"=60'
FIGURE:
004 SS2
DWG. NO. 08-PGE-004





LEGEND

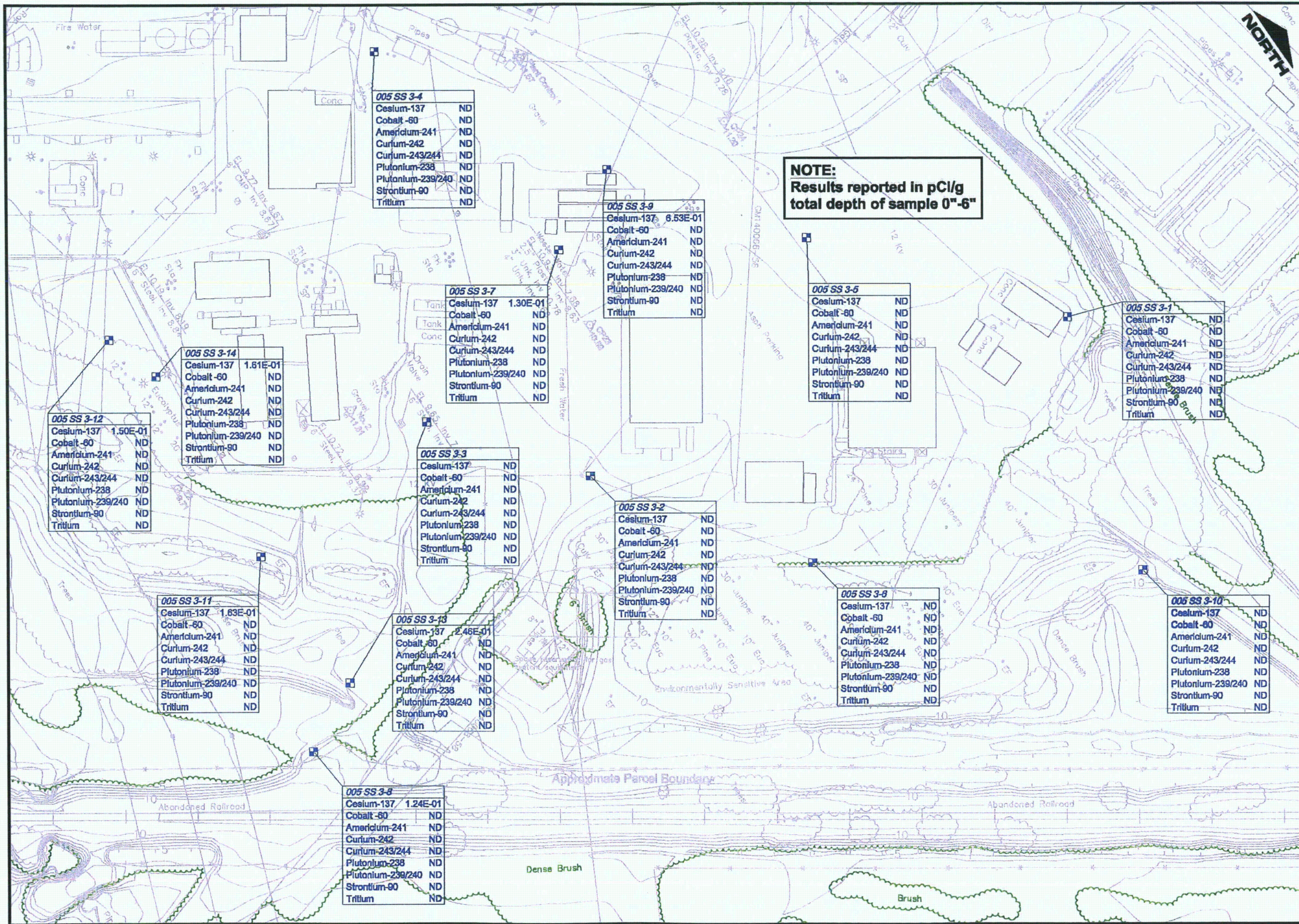
- 0 - 3000 cpm
- 3001 - 6000 cpm
- 6001 - 9000 cpm
- 9001 - > cpm

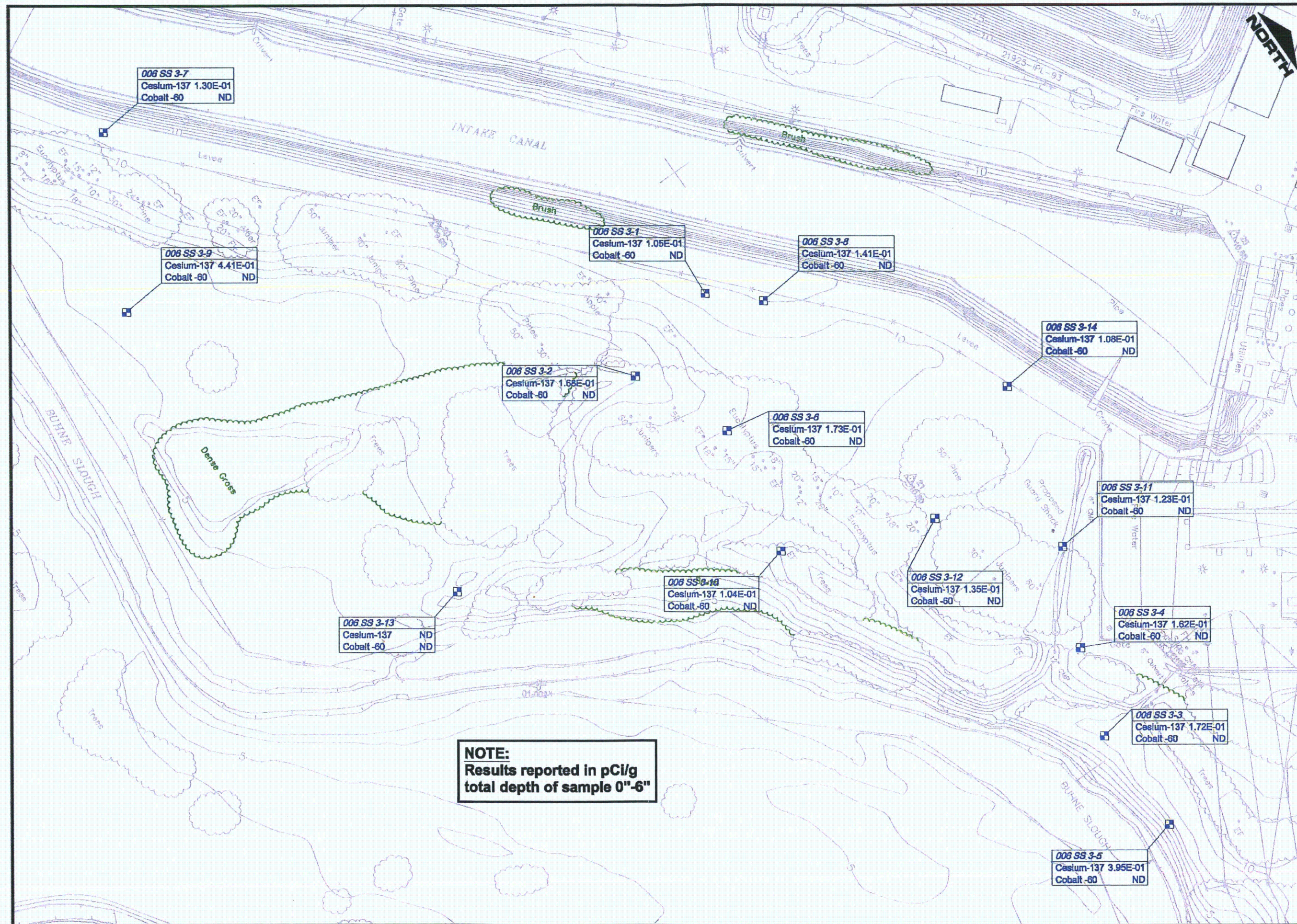
PREPARED FOR:
PACIFIC GAS & ELECTRIC
HUMBOLDT BAY POWER PLANT
GAMMA WALKOVER SCANS
OCTOBER 4, 2007
FIGURE A-10

PREPARED BY:

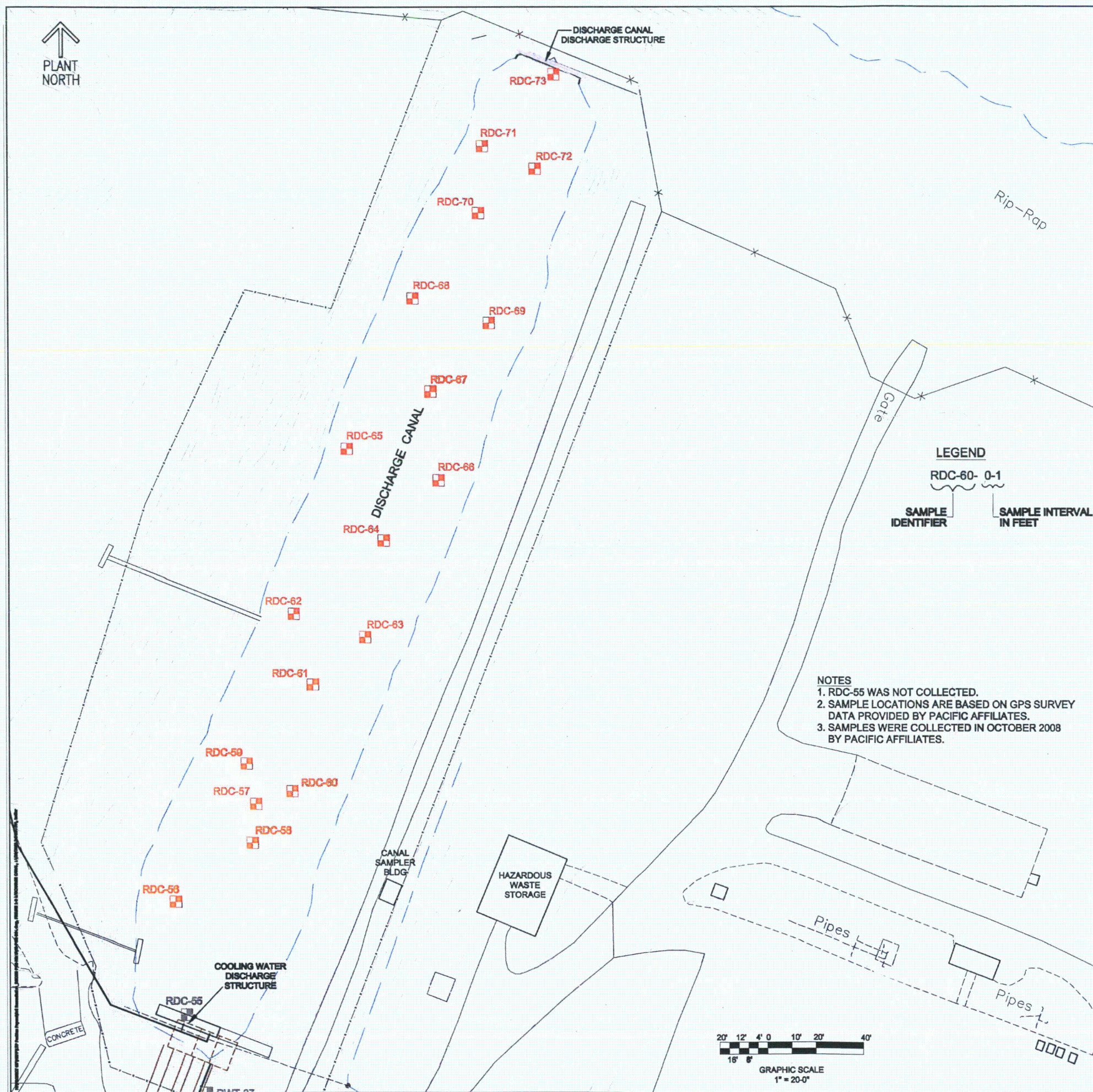


ENERCON SERVICES, INC.
 4499 Old William Penn Highway
 Marysville, PA 15568
 724-733-8711 Fax 724-733-4830





006 SS3 DWG. NO. 08-PGE-004	
SHEET NAME: SCALE: 1"=60' FIGURE:	PREPARED FOR: 006 SS3
SURFACE SOIL SAMPLE AREA 006 SS 3 PACIFIC GAS & ELECTRIC HUMBOLDT BAY	
DRAWN BY: CHECKED BY: APPROVED BY: DATE:	PREPARED BY: DATE:



Sample Number	Result (pCi/g)	
	Cesium-137	Cobalt-60
086SD1-RDC-59-0-1	1.87	ND
086SD1-RDC-59-1-2	0.72	ND
086SD1-RDC-60-0-1	0.51	ND
086SD1-RDC-60-1-2	40.50	0.80
086SD1-RDC-60-2-3	0.35	ND
086SD1-RDC-61-0-1	4.09	0.25
086SD1-RDC-61-1-2	0.21	ND
086SD1-RDC-61-2-3	ND	ND
086SD1-RDC-62-0-1	8.08	0.31
086SD1-RDC-62-1-2	0.33	ND
086SD1-RDC-62-2-3	0.22	ND
086SD1-RDC-63-0-1	3.27	0.25
086SD1-RDC-63-1-2	5.54	0.33
086SD1-RDC-63-2-3	0.12	ND
086SD1-RDC-64-0-1	0.98	ND
086SD1-RDC-64-1-2	11.90	0.26
086SD1-RDC-64-2-3	4.50	0.29
086SD1-RDC-65-0-1	2.59	ND
086SD1-RDC-65-1-2	1.97	0.17
086SD1-RDC-65-2-3	ND	ND
086SD1-RDC-66-0-1	0.42	ND
086SD1-RDC-66-1-2	0.94	ND
086SD1-RDC-67-0-1	30.60	0.29
086SD1-RDC-67-1-2	2.31	ND
086SD1-RDC-67-2-3	ND	ND
086SD1-RDC-68-0-1	1.37	ND
086SD1-RDC-68-1-2	5.68	0.22
086SD1-RDC-68-2-3	0.37	ND
086SD1-RDC-69-0-1	0.55	ND
086SD1-RDC-69-1-2	2.30	ND
086SD1-RDC-69-2-3	1.68	ND
086SD1-RDC-70-0-1	2.05	ND
086SD1-RDC-70-1-2	12.20	0.45
086SD1-RDC-70-2-3	ND	ND
086SD1-RDC-71-0-1	1.05	ND
086SD1-RDC-71-1-2	1.60	ND
086SD1-RDC-71-2-3	ND	ND
086SD1-RDC-72-0-1	0.33	ND
086SD1-RDC-72-1-2	0.11	ND
086SD1-RDC-73-0-1	ND	ND
086SD1-RDC-73-1-2	0.36	ND

Notes:
1. Result in bold print indicates concentration is greater than background levels.
2. ND= Non-Detectable. Result less than laboratory established MDC

HUMBOLDT BAY POWER PLANT
EUREKA, CA
PACIFIC GAS & ELECTRIC
SAN FRANCISCO, CA

SCALE: 1" = 20'

DISCHARGE CANAL
RADIOLOGICAL
CHARACTERIZATION
DATA

DRAWN BY: TPM
CHECKED BY: JMB
APPROVED BY:
DATE: 07/16/08
FIGURE NO.

A-13

REV.
DWG. FILE NO. 00-PG00-001 8