

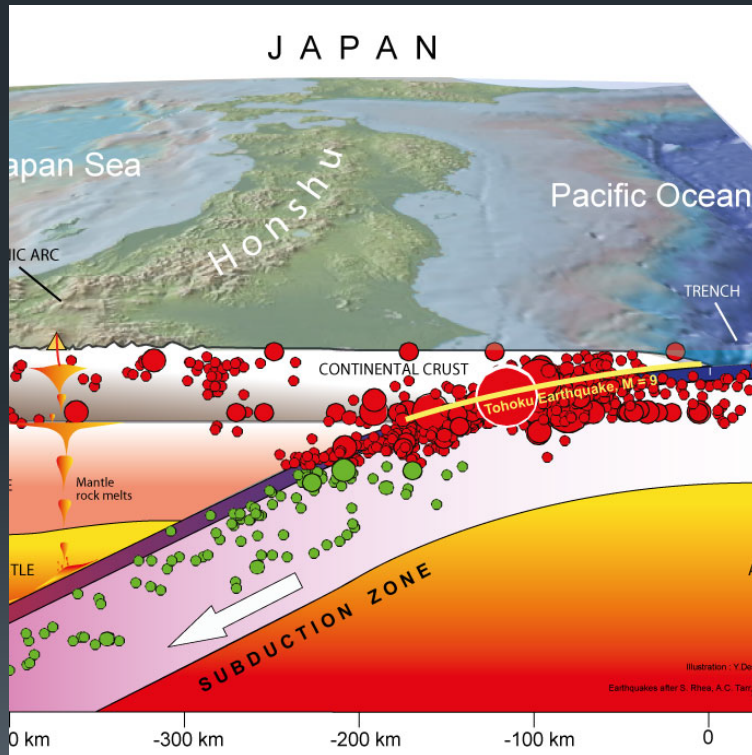
Fukushima, Two Years On: The NRC's Continued Implementation of Lessons Learned

Allison Macfarlane, Chairman, US NRC

At the Howard Baker Forum U.S.-Japan Roundtable

March 20, 2013

The earthquake and tsunami: March 11, 2011



NRC Response to the Accident

- Established Near Term Task Force
- Issued 12 Recommendations within 3 months
- Prioritized the 12 recommendations into 3 tiers



Post-Fukushima Considerations

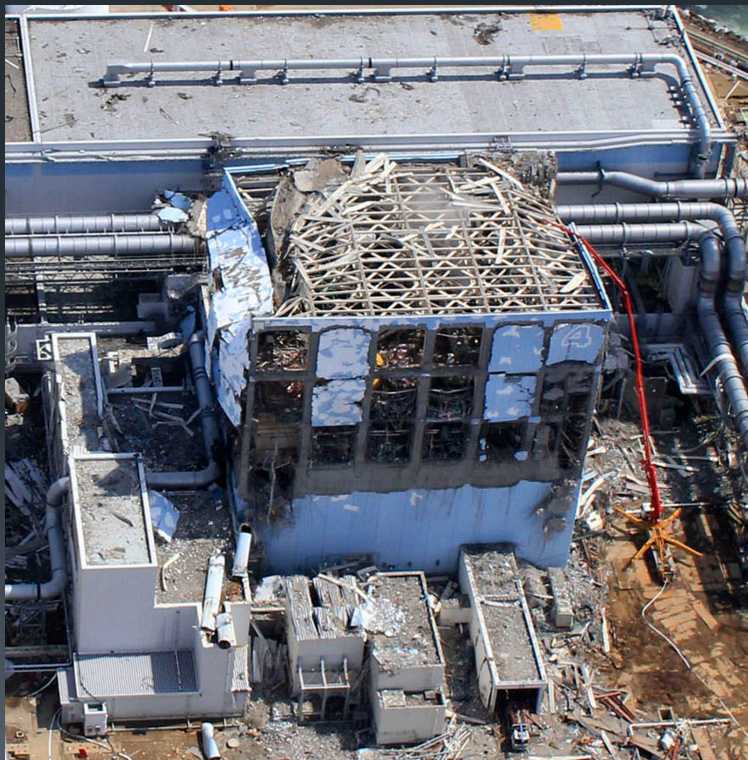
- Earthquake magnitude
- Tsunami height
- Multiple unit accident
- Station blackout



NRC in Japan, December 2012: Visit to Fukushima



NRC in Japan, December 2012: Visit to Fukushima



http://api.ninjq.com/files/YRkG3MfQ2FDxnDoOSCnHd9an9HvUx9UUeEiOeJaVj9snMn2EAEjOtMUp1roHbNpXyculVVZsvf7i*6DnpPLXMDz8DO7jYvnb/fukushima_4.jpg

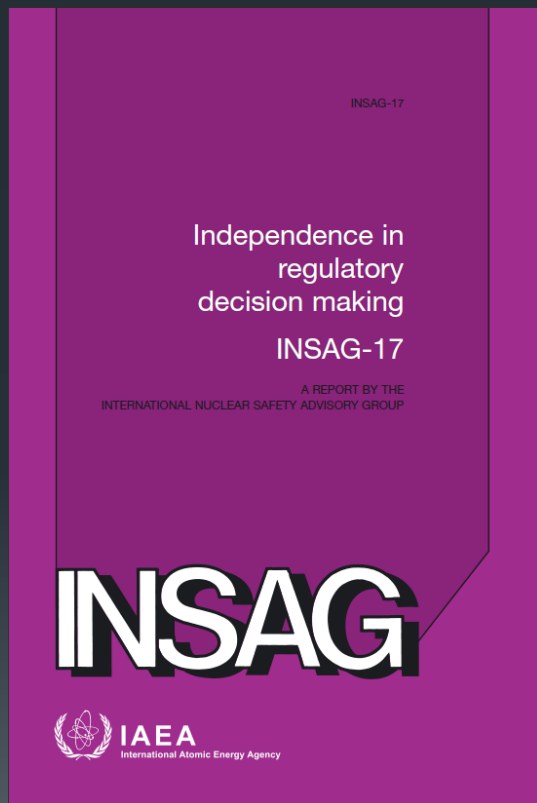
NRC in Japan, December 2012: Visit to Fukushima



NRC in Japan, December 2012: Bilateral with JNRA



Regulatory Effectiveness



- Independent
- Well-funded, staffed
- Free of undue influence
- Open, transparent process

Implementing Lessons Learned: Where Are We?



- Reviewing licensees' plans for implementing orders:
 - Mitigating strategies
 - Spent fuel pool instrumentation
- Reviewing licensees' reports on plant walk-downs:
 - Seismic hazards
 - Flooding hazards

Implementing Lessons Learned: Where Are We?

- Commission actions on:
 - Filtration strategies for BWR Mark I and II containments
 - Economic consequences



Public Communication



- Focus on internal and external communications
- Internal
 - Commission and staff
- External – more than 80 public meetings to date
 - Public, state and local governments, interest groups, industry, policy makers, international regulators
- Balancing other safety priorities

NRC's International Activities

- Nuclear safety assessments
- Ministerial conferences
- Technical and policy expertise for U.S. Government efforts
- Expert missions to Japan
- Review of IAEA safety standards
- Convention on Nuclear Safety



What's Next?

- Continuing our work on other proposed regulatory changes
 - Station blackout and emergency response
 - Integration of plant procedures
- Continued public and international engagement
- Focus on long-term predictability and stability



Thank You