

Status: ☒ Y ☐ N ☐ U

Seismic Walkdown Checklist (SWC)

Equipment ID No.: D03-83125-----P06

Equipment Class: (1) Motor Control Centers

Equipment Description: 125V DC/ RB 125V DC Distribution Panel #3

Project: Dresden 3 SWEL

Location (Bldg, Elev, Room/Area): Reactor, 570.00 ft, ALL

Manufacturer/Model: _____

Instructions for Completing Checklist

This checklist may be used to document the results of the Seismic Walkdown of an item of equipment on the SWEL. The space below each of the following questions may be used to record the results of judgments and findings. Additional space is provided at the end of this checklist for documenting other comments.

Anchorage

- | | |
|--|-----|
| 1. Is anchorage configuration verification required (i.e., is the item one of the 50% of SWEL items requiring such verification)? | Yes |
| 2. Is the anchorage free of bent, broken, missing or loose hardware? | Yes |
| 3. Is the anchorage free of corrosion that is more than mild surface oxidation? | Yes |
| 4. Is the anchorage free of visible cracks in the concrete near the anchors? | Yes |
| 5. Is the anchorage configuration consistent with plant documentation? (Note: This question only applies if the item is one of the 50% for which an anchorage configuration verification is required.) | Yes |
| 6. Based on the above anchorage evaluations, is the anchorage free of potentially adverse seismic conditions? | Yes |

Status: ☒ Y ☐ N ☐ U

Seismic Walkdown Checklist (SWC)

Equipment ID No.: D03-83125----P06

Equipment Class: (1) Motor Control Centers

Equipment Description: 125V DC/ RB 125V DC Distribution Panel #3

Interaction Effects

- | | |
|---|-----|
| 7. Are soft targets free from impact by nearby equipment or structures? | Yes |
| 8. Are overhead equipment, distribution systems, ceiling tiles and lighting, and masonry block walls not likely to collapse onto the equipment? | Yes |
| 9. Do attached lines have adequate flexibility to avoid damage? | Yes |
| 10. Based on the above seismic interaction evaluations, is equipment free of potentially adverse seismic interaction effects? | Yes |

Other Adverse Conditions

- | | |
|--|-----|
| 11. Have you looked for and found no adverse seismic conditions that could adversely affect the safety functions of the equipment? | Yes |
|--|-----|

Comments

SEWS Anchorage Notes:

MCC stitch welded to edge angle embedded in concrete.

Seismic Walkdown Team: J. Griffith & M. Wodarczyk - 8/2/2012

Evaluated by: James D. Griffith James Griffith

Date: 9/30/2012

Michael J. Wodarczyk

Michael Wodarczyk

9/30/2012

Status: ☒ Y ☐ N ☐ U

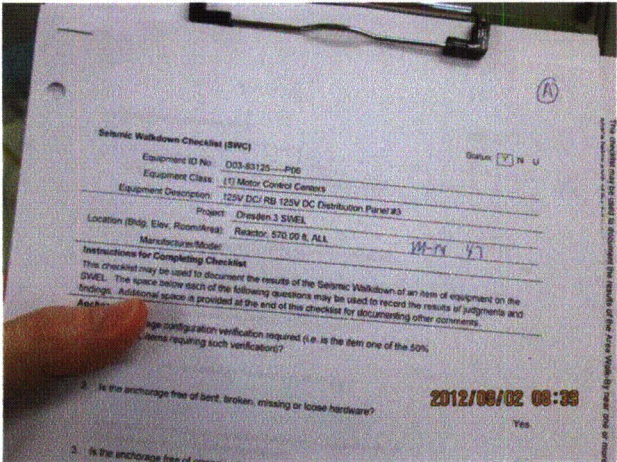
Seismic Walkdown Checklist (SWC)

Equipment ID No.: D03-83125-----P06

Equipment Class: (1) Motor Control Centers

Equipment Description: 125V DC/ RB 125V DC Distribution Panel #3

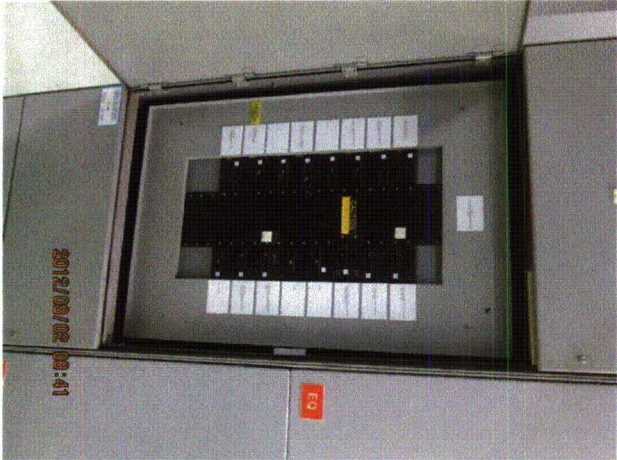
Photos



20120802-Dresden-3 029



20120802-Dresden-3 030



20120802-Dresden-3 031

Status: ☒ Y ☐ N ☐ U

Seismic Walkdown Checklist (SWC)

Equipment ID No.: D03-83250-3---B05

Equipment Class: (16) Battery Chargers and Inverters

Equipment Description: 250V DC/ Battery Charger #3

Project: Dresden 3 SWEL

Location (Bldg, Elev, Room/Area): Turbine, 538.00 ft, ALL

Manufacturer/Model: _____

Instructions for Completing Checklist

This checklist may be used to document the results of the Seismic Walkdown of an item of equipment on the SWEL. The space below each of the following questions may be used to record the results of judgments and findings. Additional space is provided at the end of this checklist for documenting other comments.

Anchorage

1. Is anchorage configuration verification required (i.e., is the item one of the 50% of SWEL items requiring such verification)? No
2. Is the anchorage free of bent, broken, missing or loose hardware? Yes
3. Is the anchorage free of corrosion that is more than mild surface oxidation? Yes
4. Is the anchorage free of visible cracks in the concrete near the anchors? Yes
Minor shrinkage cracks in floor judged to be acceptable.
5. Is the anchorage configuration consistent with plant documentation? (Note: This question only applies if the item is one of the 50% for which an anchorage configuration verification is required.) Not Applicable
6. Based on the above anchorage evaluations, is the anchorage free of potentially adverse seismic conditions? Yes

Status: ☒ Y ☐ N ☐ U

Seismic Walkdown Checklist (SWC)

Equipment ID No.: D03-83250-3--B05

Equipment Class: (16) Battery Chargers and Inverters

Equipment Description: 250V DC/ Battery Charger #3

Interaction Effects

- | | |
|--|-----|
| 7. Are soft targets free from impact by nearby equipment or structures? | Yes |
| 8. Are overhead equipment, distribution systems, ceiling tiles and lighting, and masonry block walls not likely to collapse onto the equipment?
<i>Overhead light fixtures judged to be acceptable.</i> | Yes |
| 9. Do attached lines have adequate flexibility to avoid damage? | Yes |
| 10. Based on the above seismic interaction evaluations, is equipment free of potentially adverse seismic interaction effects? | Yes |

Other Adverse Conditions

- | | |
|--|-----|
| 11. Have you looked for and found no adverse seismic conditions that could adversely affect the safety functions of the equipment? | Yes |
|--|-----|

Comments

Seismic Walkdown Team: J. Griffith & M. Wodarczyk - 7/30/2012

Evaluated by:  James Griffith

Date: 9/30/2012



Michael Wodarczyk

9/30/2012

Status: ☒ Y ☐ N ☐ U

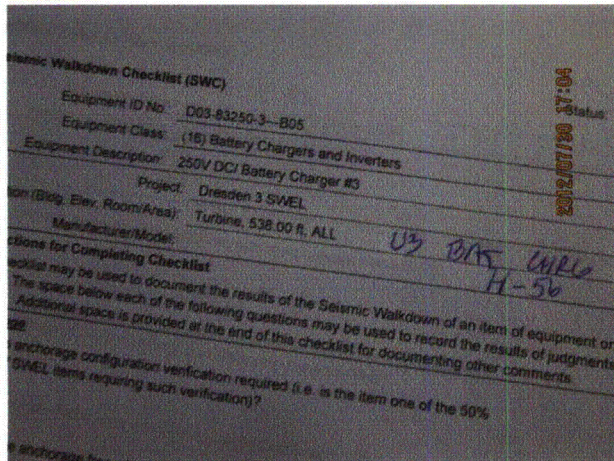
Seismic Walkdown Checklist (SWC)

Equipment ID No.: D03-83250-3---B05

Equipment Class: (16) Battery Chargers and Inverters

Equipment Description: 250V DC/ Battery Charger #3

Photos



20120730-Dresden-3 195



20120730-Dresden-3 196



20120730-Dresden-3 197



20120730-Dresden-3 198

Status: ☒ Y ☐ N ☐ U

Seismic Walkdown Checklist (SWC)

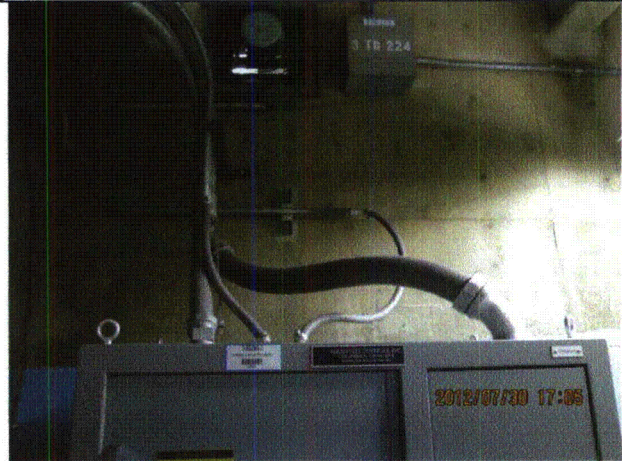
Equipment ID No.: D03-83250-3---B05

Equipment Class: (16) Battery Chargers and Inverters

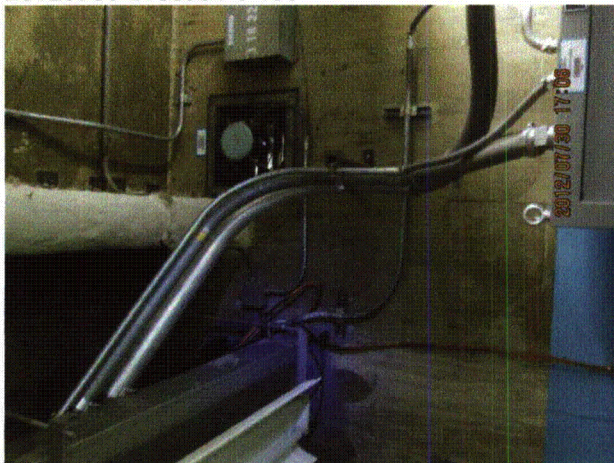
Equipment Description: 250V DC/ Battery Charger #3



20120730-Dresden-3 199



20120730-Dresden-3 200



20120730-Dresden-3 201



20120730-Dresden-3 202

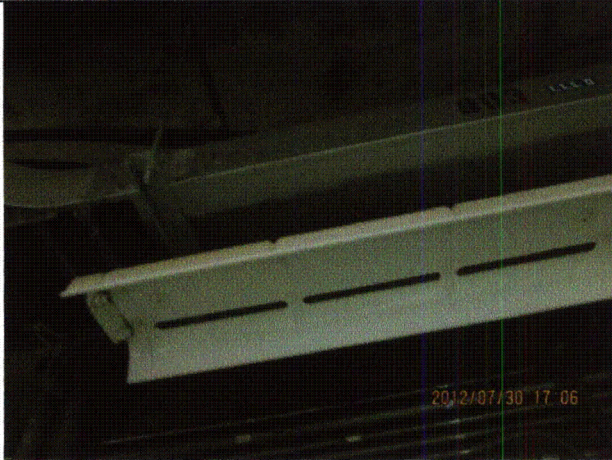
Status: ☒ Y ☐ N ☐ U

Seismic Walkdown Checklist (SWC)

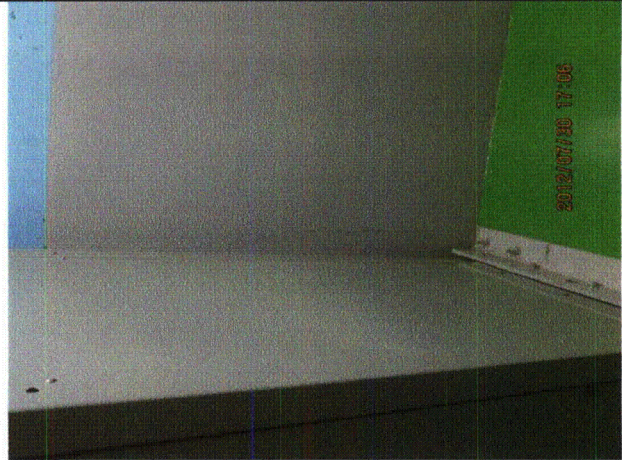
Equipment ID No.: D03-83250-3---B05

Equipment Class: (16) Battery Chargers and Inverters

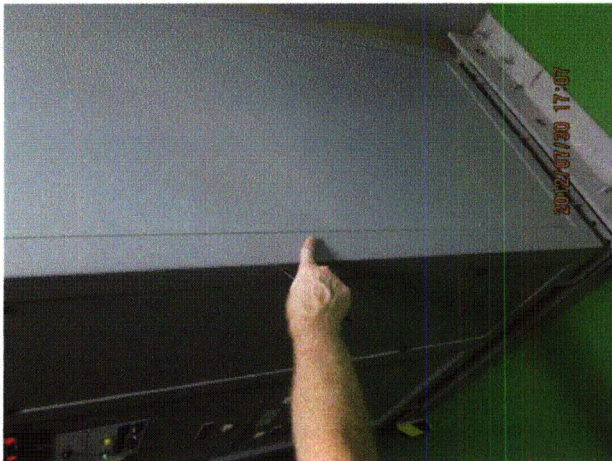
Equipment Description: 250V DC/ Battery Charger #3



20120730-Dresden-3 203



20120730-Dresden-3 204



20120730-Dresden-3 205



20120730-Dresden-3 206

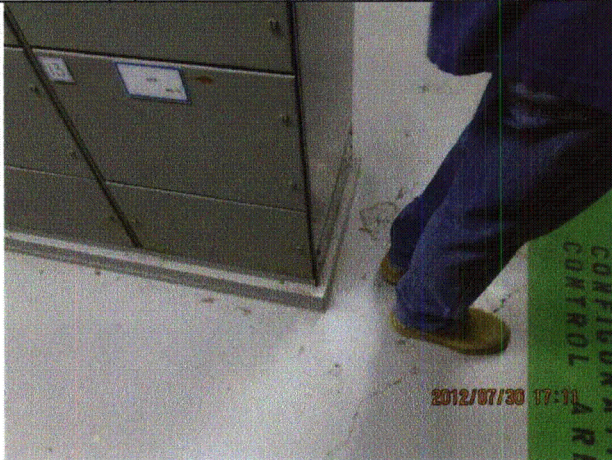
Status: ☒ Y ☐ N ☐ U

Seismic Walkdown Checklist (SWC)

Equipment ID No.: D03-83250-3---B05

Equipment Class: (16) Battery Chargers and Inverters

Equipment Description: 250V DC/ Battery Charger #3



20120730-Dresden-3 207



20120730-Dresden-3 208



20120730-Dresden-3 209



20120730-Dresden-3 210

Status: ☒ Y ☐ N ☐ U

Seismic Walkdown Checklist (SWC)

Equipment ID No.: D03-83250----B04

Equipment Class: (15) Batteries on Racks

Equipment Description: 250V DC/ Battery #3, Feed to TB MCC #3

Project: Dresden 3 SWEL

Location (Bldg, Elev, Room/Area): Turbine, 551.00 ft, ALL

Manufacturer/Model: _____

Instructions for Completing Checklist

This checklist may be used to document the results of the Seismic Walkdown of an item of equipment on the SWEL. The space below each of the following questions may be used to record the results of judgments and findings. Additional space is provided at the end of this checklist for documenting other comments.

Anchorage

1. Is anchorage configuration verification required (i.e., is the item one of the 50% of SWEL items requiring such verification)? Yes
2. Is the anchorage free of bent, broken, missing or loose hardware? Yes
3. Is the anchorage free of corrosion that is more than mild surface oxidation? Yes
4. Is the anchorage free of visible cracks in the concrete near the anchors? Yes
Minor shrinkage cracks in floor judged acceptable.
5. Is the anchorage configuration consistent with plant documentation? (Note: This question only applies if the item is one of the 50% for which an anchorage configuration verification is required.) Yes
6. Based on the above anchorage evaluations, is the anchorage free of potentially adverse seismic conditions? Yes

Status: ☒ Y ☐ N ☐ U

Seismic Walkdown Checklist (SWC)

Equipment ID No.: D03-83250-----B04

Equipment Class: (15) Batteries on Racks

Equipment Description: 250V DC/ Battery #3, Feed to TB MCC #3

Interaction Effects

7. Are soft targets free from impact by nearby equipment or structures? Yes
8. Are overhead equipment, distribution systems, ceiling tiles and lighting, and masonry block walls not likely to collapse onto the equipment? Yes
Overhead light fixtures, duct, and trolley hoist and beam judged acceptable.
9. Do attached lines have adequate flexibility to avoid damage? Yes
10. Based on the above seismic interaction evaluations, is equipment free of potentially adverse seismic interaction effects? Yes

Other Adverse Conditions

11. Have you looked for and found no adverse seismic conditions that could adversely affect the safety functions of the equipment? Yes
Trolley stops prevent trolley contact with jumper cable.

Comments

SEWS Anchorage Notes:

Each post leg is thru-bolted to an angle iron clip which is anchored by one or two 1/2" wedge expansion anchor to the concrete floor.

Seismic Walkdown Team: J. Griffith & M. Wodarczyk - 7/31/2012

Evaluated by: James D. Griffith James Griffith

Date: 9/30/2012

Michael J. Wodarczyk

Michael Wodarczyk

9/30/2012

Status: ☒ Y ☐ N ☐ U

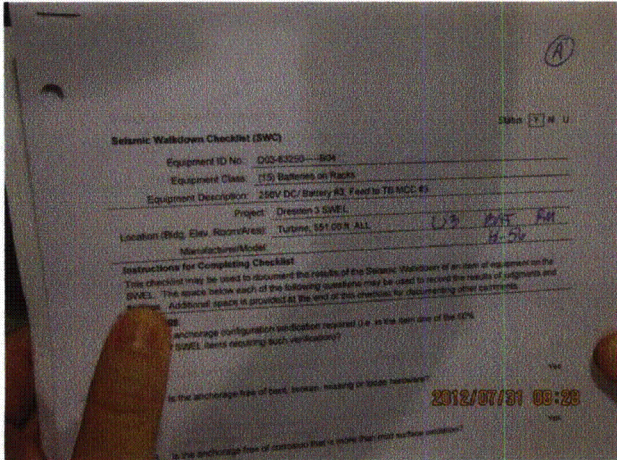
Seismic Walkdown Checklist (SWC)

Equipment ID No.: D03-83250-----B04

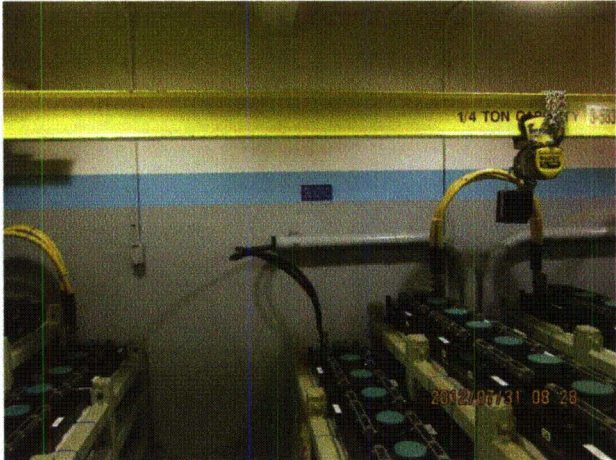
Equipment Class: (15) Batteries on Racks

Equipment Description: 250V DC/ Battery #3, Feed to TB MCC #3

Photos



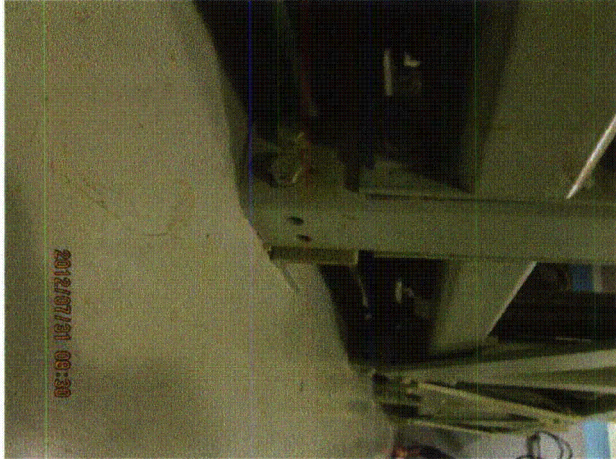
20120731-Dresden-3 053



20120731-Dresden-3 054



20120731-Dresden-3 055



20120731-Dresden-3 056

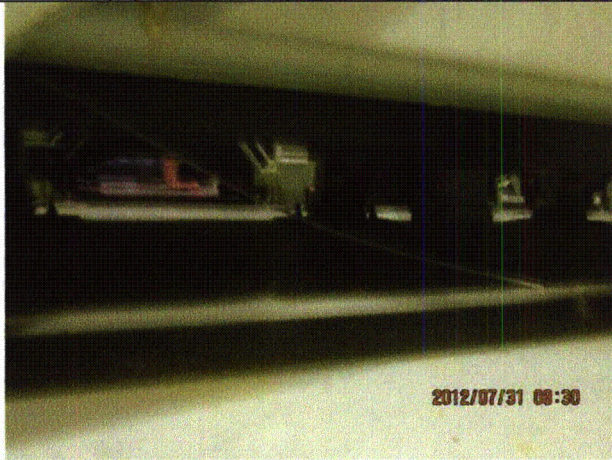
Status: ☒ Y ☐ N ☐ U

Seismic Walkdown Checklist (SWC)

Equipment ID No.: D03-83250-----B04

Equipment Class: (15) Batteries on Racks

Equipment Description: 250V DC/ Battery #3, Feed to TB MCC #3



20120731-Dresden-3 057



20120731-Dresden-3 058



20120731-Dresden-3 059



20120731-Dresden-3 060

Status: ☒ Y ☐ N ☐ U

Seismic Walkdown Checklist (SWC)

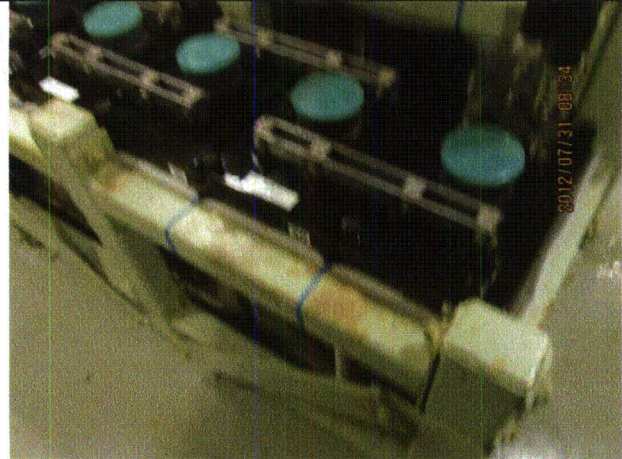
Equipment ID No.: D03-83250-----B04

Equipment Class: (15) Batteries on Racks

Equipment Description: 250V DC/ Battery #3, Feed to TB MCC #3



20120731-Dresden-3 061



20120731-Dresden-3 062



20120731-Dresden-3 063



20120731-Dresden-3 064

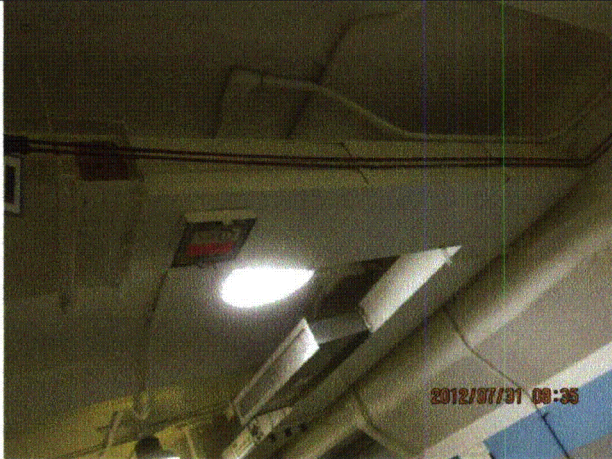
Status: ☒ Y ☐ N ☐ U

Seismic Walkdown Checklist (SWC)

Equipment ID No.: D03-83250-----B04

Equipment Class: (15) Batteries on Racks

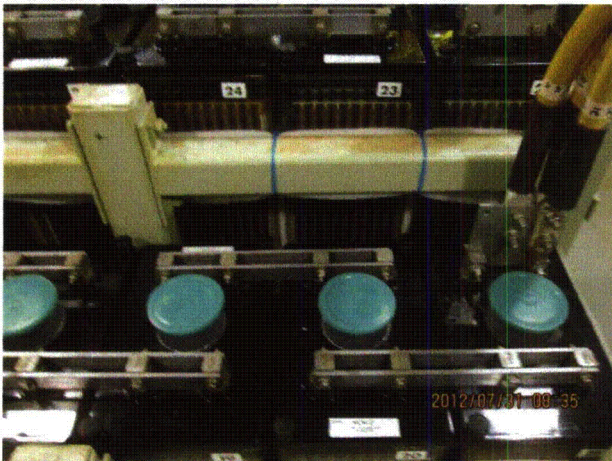
Equipment Description: 250V DC/ Battery #3, Feed to TB MCC #3



20120731-Dresden-3 065



20120731-Dresden-3 066



20120731-Dresden-3 067



20120731-Dresden-3 068

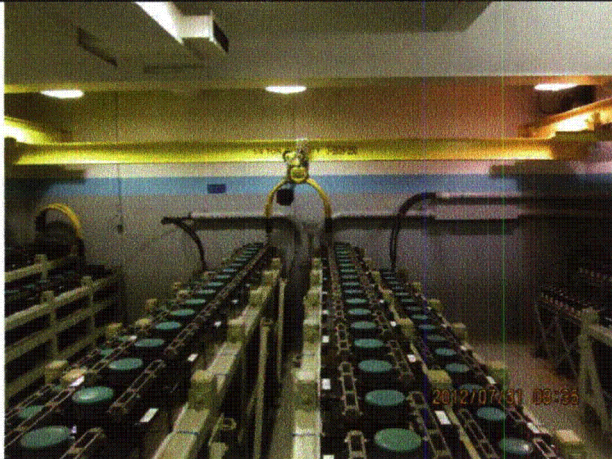
Status: ☒ Y ☐ N ☐ U

Seismic Walkdown Checklist (SWC)

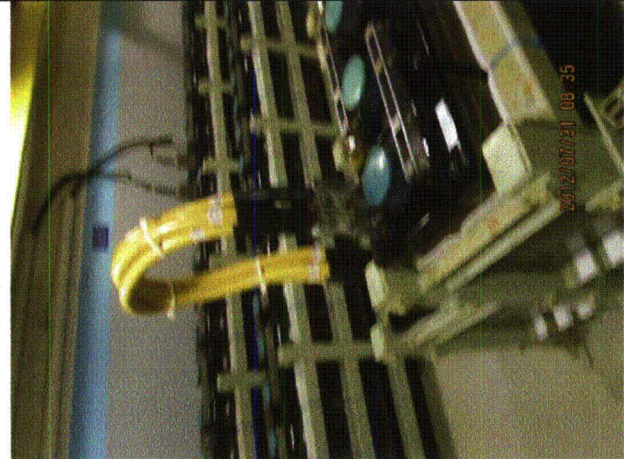
Equipment ID No.: D03-83250-----B04

Equipment Class: (15) Batteries on Racks

Equipment Description: 250V DC/ Battery #3, Feed to TB MCC #3



20120731-Dresden-3 069



20120731-Dresden-3 070



20120731-Dresden-3 071



20120731-Dresden-3 072

Status: ☒ Y ☐ N ☐ U

Seismic Walkdown Checklist (SWC)

Equipment ID No.: D03-83250-----B04

Equipment Class: (15) Batteries on Racks

Equipment Description: 250V DC/ Battery #3, Feed to TB MCC #3



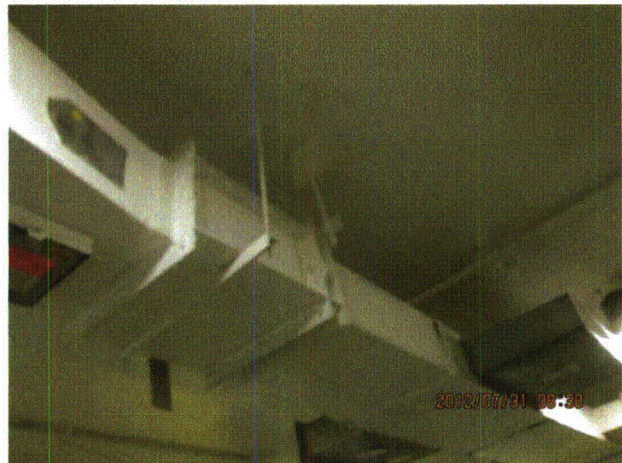
20120731-Dresden-3 073



20120731-Dresden-3 074



20120731-Dresden-3 075



20120731-Dresden-3 076

Status: ☒ Y ☐ N ☐ U

Seismic Walkdown Checklist (SWC)

Equipment ID No.: D03-9802A-A21-B11

Equipment Class: (14) Distribution Panels

Equipment Description: 24/48V DC/ Breaker to Battery Charger #3A (+)

Project: Dresden 3 SWEL

Location (Bldg, Elev, Room/Area): Turbine, 538.00 ft, ALL

Manufacturer/Model: _____

Instructions for Completing Checklist

This checklist may be used to document the results of the Seismic Walkdown of an item of equipment on the SWEL. The space below each of the following questions may be used to record the results of judgments and findings. Additional space is provided at the end of this checklist for documenting other comments.

Anchorage

- | | |
|--|----------------|
| 1. Is anchorage configuration verification required (i.e., is the item one of the 50% of SWEL items requiring such verification)? | No |
| 2. Is the anchorage free of bent, broken, missing or loose hardware? | Yes |
| 3. Is the anchorage free of corrosion that is more than mild surface oxidation? | Yes |
| 4. Is the anchorage free of visible cracks in the concrete near the anchors?
<i>Minor shrinkage cracks in floor judged to be acceptable.</i> | Yes |
| 5. Is the anchorage configuration consistent with plant documentation? (Note: This question only applies if the item is one of the 50% for which an anchorage configuration verification is required.) | Not Applicable |
| 6. Based on the above anchorage evaluations, is the anchorage free of potentially adverse seismic conditions? | Yes |

Status: ☒ Y ☐ N ☐ U

Seismic Walkdown Checklist (SWC)

Equipment ID No.: D03-9802A-A21-B11

Equipment Class: (14) Distribution Panels

Equipment Description: 24/48V DC/ Breaker to Battery Charger #3A (+)

Interaction Effects

- | | |
|---|-----|
| 7. Are soft targets free from impact by nearby equipment or structures? | Yes |
| 8. Are overhead equipment, distribution systems, ceiling tiles and lighting, and masonry block walls not likely to collapse onto the equipment?
<i>Overhead light fixtures judged to be acceptable. Adjacent masonry wall is safety-related.</i> | Yes |
| 9. Do attached lines have adequate flexibility to avoid damage? | Yes |
| 10. Based on the above seismic interaction evaluations, is equipment free of potentially adverse seismic interaction effects? | Yes |

Other Adverse Conditions

- | | |
|--|-----|
| 11. Have you looked for and found no adverse seismic conditions that could adversely affect the safety functions of the equipment? | Yes |
|--|-----|

IR 1394946:

Panel 3A 48/24VDC with doors that do not latch

Panel 3A 48/24VDC was found partially latched. Only one of three latches were engaged (the door was out of plane with the rest of the item).

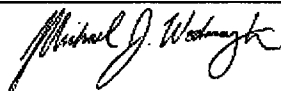
Communication from the shift manager informed Engineering that Operations personnel had secured the latches on 7/30/2012 at approximately 17:55 hours. Therefore, door is not a seismic concern.

Comments

Seismic Walkdown Team: J. Griffith & M. Wodarczyk - 7/31/2012

Evaluated by:  James Griffith

Date: 9/30/2012



Michael Wodarczyk

9/30/2012

Status: ☒ Y ☐ N ☐ U

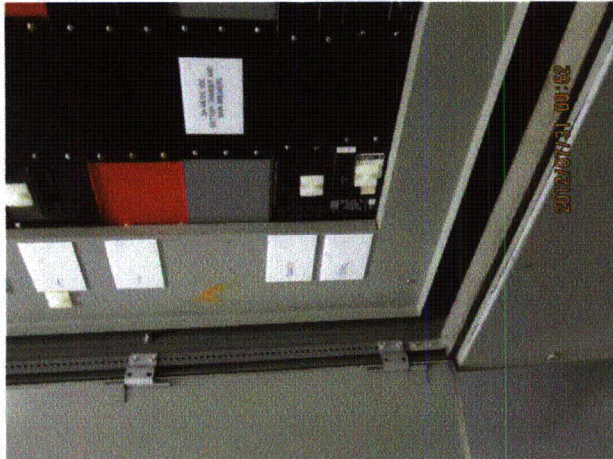
Seismic Walkdown Checklist (SWC)

Equipment ID No.: D03-9802A-A21-B11

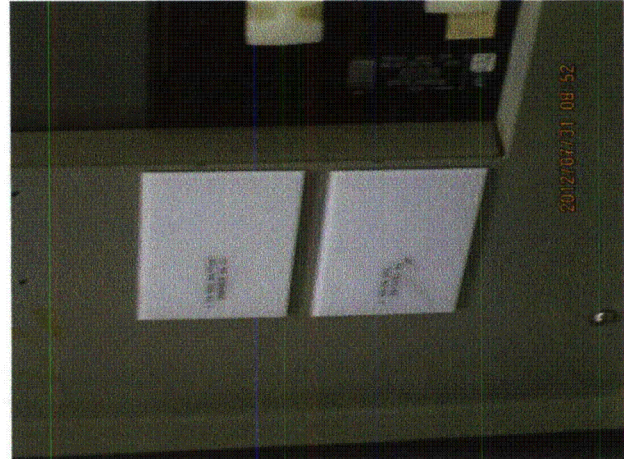
Equipment Class: (14) Distribution Panels

Equipment Description: 24/48V DC/ Breaker to Battery Charger #3A (+)

Photos



20120731-Dresden-3 083



20120731-Dresden-3 084



20120731-Dresden-3 085



20120731-Dresden-3 086

Status: ☒ Y ☐ N ☐ U

Seismic Walkdown Checklist (SWC)

Equipment ID No.: D03-9802A-A21-B11

Equipment Class: (14) Distribution Panels

Equipment Description: 24/48V DC/ Breaker to Battery Charger #3A (+)

Seismic Walkdown Checklist (SWC)

Equipment ID No. D03-9802A-A21-B11

Equipment Class (14) Distribution Panels

Equipment Description 24/48V DC/ Breaker to Battery Charger #3A (+)

Project Dresden 3 SWEL

Location (Bldg, Elec. Room/Area) Turbine, 544-99-11 ALL U3 DIA RM

Manufacturer/Model 536 H-52

Status: ☒ Y ☐ N

Instructions for Completing Checklist

This checklist may be used to document the results of the Seismic Walkdown of an item of equipment on the SWEL. The space below each of the following questions may be used to record the results of judgments and findings. Additional space is provided at the end of this checklist for documenting other comments.

Additional space is provided at the end of this checklist for documenting other comments.

1. Is anchorage configuration verification required (i.e. is the item one of the 50% of SWEL items requiring such verification)?

2. Is the anchorage free of bent, broken, missing or loose hardware?

2012/07/31 08:53

20120731-Dresden-3 087

Status: ☒ Y ☐ N ☐ U

Seismic Walkdown Checklist (SWC)

Equipment ID No.: D03-9802-A----P06

Equipment Class: (1) Motor Control Centers

Equipment Description: 24/48V DC/ Distribution Panel #3A

Project: Dresden 3 SWEL

Location (Bldg, Elev, Room/Area): Turbine, 538.00 ft, ALL

Manufacturer/Model: _____

Instructions for Completing Checklist

This checklist may be used to document the results of the Seismic Walkdown of an item of equipment on the SWEL. The space below each of the following questions may be used to record the results of judgments and findings. Additional space is provided at the end of this checklist for documenting other comments.

Anchorage

1. Is anchorage configuration verification required (i.e., is the item one of the 50% of SWEL items requiring such verification)? No
2. Is the anchorage free of bent, broken, missing or loose hardware? Yes
3. Is the anchorage free of corrosion that is more than mild surface oxidation? Yes
4. Is the anchorage free of visible cracks in the concrete near the anchors? Yes
Minor shrinkage cracks in floor judged to be acceptable.
5. Is the anchorage configuration consistent with plant documentation? (Note: This question only applies if the item is one of the 50% for which an anchorage configuration verification is required.) Not Applicable
6. Based on the above anchorage evaluations, is the anchorage free of potentially adverse seismic conditions? Yes

Status: ☒ Y ☐ N ☐ U

Seismic Walkdown Checklist (SWC)

Equipment ID No.: D03-9802-A---P06

Equipment Class: (1) Motor Control Centers

Equipment Description: 24/48V DC/ Distribution Panel #3A

Interaction Effects

7. Are soft targets free from impact by nearby equipment or structures? Yes
8. Are overhead equipment, distribution systems, ceiling tiles and lighting, and masonry block walls not likely to collapse onto the equipment? Yes
Light fixtures judged to be acceptable. Emergency light fixture No. 329 is adequately restrained.
9. Do attached lines have adequate flexibility to avoid damage? Yes
10. Based on the above seismic interaction evaluations, is equipment free of potentially adverse seismic interaction effects? Yes

Other Adverse Conditions

11. Have you looked for and found no adverse seismic conditions that could adversely affect the safety functions of the equipment? Yes
IR 1394946:

Panel 3A 48/24VDC with doors that do not latch

Panel 3A 48/24VDC was found partially latched. Only one of three latches were engaged (the door was out of plane with the rest of the item).

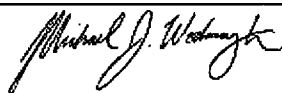
Communication from the shift manager informed Engineering that Operations personnel had secured the latches on 7/30/2012 at approximately 17:55 hours. Therefore, door is not a seismic concern.

Comments

Seismic Walkdown Team: J. Griffith & M. Wodarczyk - 7/30/2012

Evaluated by:  James Griffith

Date: 9/30/2012



Michael Wodarczyk

9/30/2012

Status: ☒ Y ☐ N ☐ U

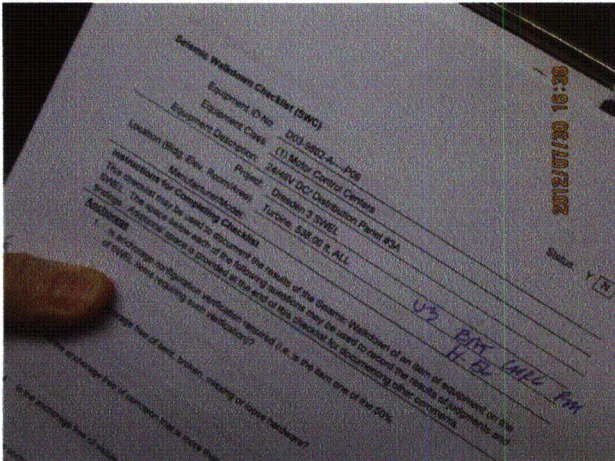
Seismic Walkdown Checklist (SWC)

Equipment ID No.: D03-9802-A----P06

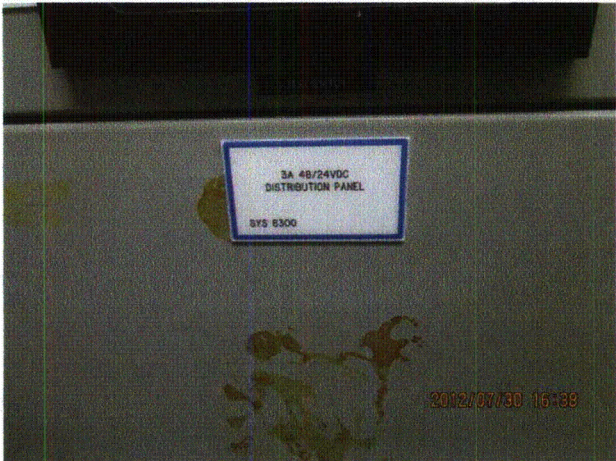
Equipment Class: (1) Motor Control Centers

Equipment Description: 24/48V DC/ Distribution Panel #3A

Photos



20120730-Dresden-3 154



20120730-Dresden-3 155



20120730-Dresden-3 156



20120730-Dresden-3 157

Status: ☒ Y ☐ N ☐ U

Seismic Walkdown Checklist (SWC)

Equipment ID No.: D03-9802-A---P06

Equipment Class: (1) Motor Control Centers

Equipment Description: 24/48V DC/ Distribution Panel #3A



20120730-Dresden-3 158



20120730-Dresden-3 159



20120730-Dresden-3 160



20120730-Dresden-3 161

Status: ☒ Y ☐ N ☐ U

Seismic Walkdown Checklist (SWC)

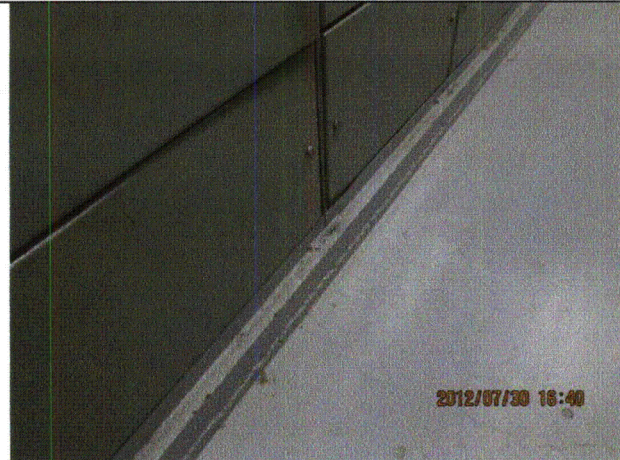
Equipment ID No.: D03-9802-A---P06

Equipment Class: (1) Motor Control Centers

Equipment Description: 24/48V DC/ Distribution Panel #3A



20120730-Dresden-3 162



20120730-Dresden-3 163



20120730-Dresden-3 164



20120730-Dresden-3 165

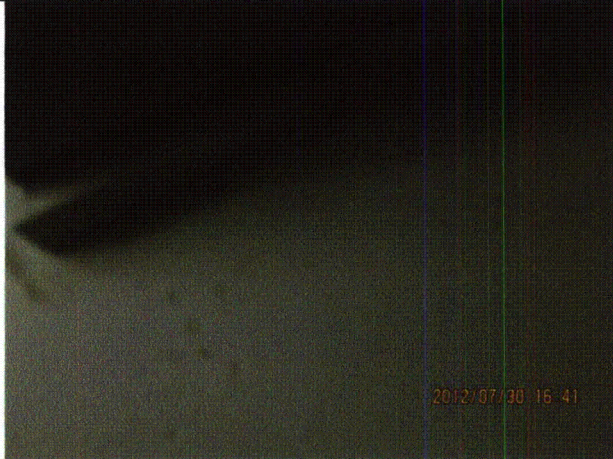
Status: ☒ Y ☐ N ☐ U

Seismic Walkdown Checklist (SWC)

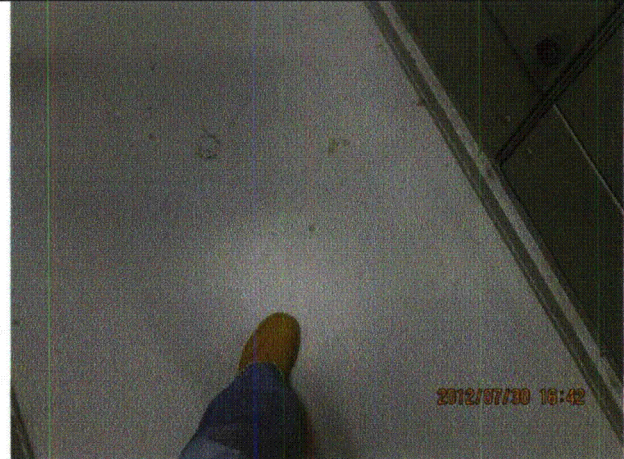
Equipment ID No.: D03-9802-A---P06

Equipment Class: (1) Motor Control Centers

Equipment Description: 24/48V DC/ Distribution Panel #3A



20120730-Dresden-3 166



20120730-Dresden-3 167



20120730-Dresden-3 168



20120730-Dresden-3 169

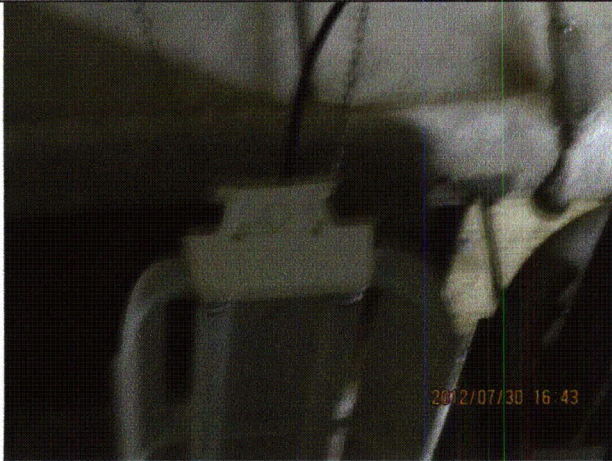
Status: ☒ Y ☐ N ☐ U

Seismic Walkdown Checklist (SWC)

Equipment ID No.: D03-9802-A----P06

Equipment Class: (1) Motor Control Centers

Equipment Description: 24/48V DC/ Distribution Panel #3A



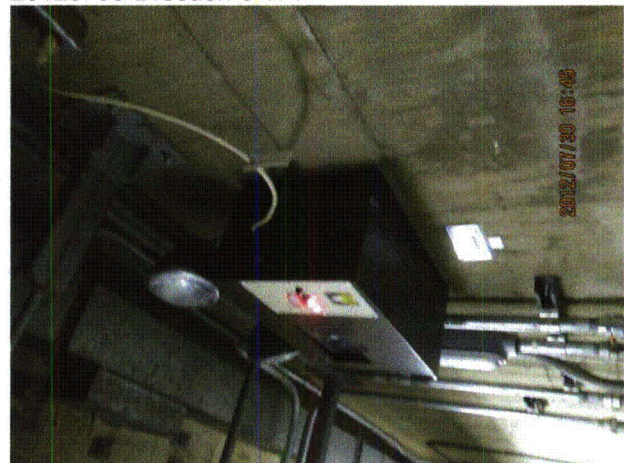
20120730-Dresden-3 170



20120730-Dresden-3 171



20120730-Dresden-3 172



20120730-Dresden-3 173

Status: ☒ Y ☐ N ☐ U

Seismic Walkdown Checklist (SWC)

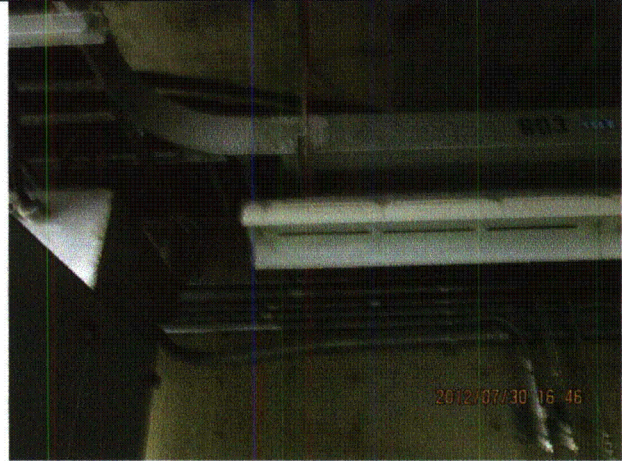
Equipment ID No.: D03-9802-A---P06

Equipment Class: (1) Motor Control Centers

Equipment Description: 24/48V DC/ Distribution Panel #3A



20120730-Dresden-3 174



20120730-Dresden-3 175



20120730-Dresden-3 176



20120730-Dresden-3 177

Status: ☒ Y ☐ N ☐ U

Seismic Walkdown Checklist (SWC)

Equipment ID No.: D03-9802-A---P06

Equipment Class: (1) Motor Control Centers

Equipment Description: 24/48V DC/ Distribution Panel #3A



20120730-Dresden-3 178

Status: ☒ Y ☐ N ☐ U

Seismic Walkdown Checklist (SWC)

Equipment ID No.: D03-DGCP

Equipment Class: (20) Instrumentation and Control Panels and Cabinets

Equipment Description: CONTROL PANEL/ Unit 3 Diesel Generator Control Panel

Project: Dresden 3 SWEL

Location (Bldg, Elev, Room/Area): Turbine, 517.50 ft, ALL

Manufacturer/Model:

Instructions for Completing Checklist

This checklist may be used to document the results of the Seismic Walkdown of an item of equipment on the SWEL. The space below each of the following questions may be used to record the results of judgments and findings. Additional space is provided at the end of this checklist for documenting other comments.

Anchorage

1. Is anchorage configuration verification required (i.e., is the item one of the 50% of SWEL items requiring such verification)? Yes
2. Is the anchorage free of bent, broken, missing or loose hardware? Yes
3. Is the anchorage free of corrosion that is more than mild surface oxidation? Yes
4. Is the anchorage free of visible cracks in the concrete near the anchors? Not Applicable
Control panel mounted to Diesel Generator skid.
5. Is the anchorage configuration consistent with plant documentation? (Note: This question only applies if the item is one of the 50% for which an anchorage configuration verification is required.) Yes
6. Based on the above anchorage evaluations, is the anchorage free of potentially adverse seismic conditions? Yes

Status: ☒ Y ☐ N ☐ U

Seismic Walkdown Checklist (SWC)

Equipment ID No.: D03-DGCP

Equipment Class: (20) Instrumentation and Control Panels and Cabinets

Equipment Description: CONTROL PANEL/ Unit 3 Diesel Generator Control Panel

Interaction Effects

- | | |
|---|-----|
| 7. Are soft targets free from impact by nearby equipment or structures? | Yes |
| 8. Are overhead equipment, distribution systems, ceiling tiles and lighting, and masonry block walls not likely to collapse onto the equipment?
<i>Overhead gallery well-supported. Adjacent masonry wall is safety-related.</i> | Yes |
| 9. Do attached lines have adequate flexibility to avoid damage? | Yes |
| 10. Based on the above seismic interaction evaluations, is equipment free of potentially adverse seismic interaction effects? | Yes |

Other Adverse Conditions

- | | |
|--|-----|
| 11. Have you looked for and found no adverse seismic conditions that could adversely affect the safety functions of the equipment? | Yes |
|--|-----|

Comments

SEWS Anchorage Notes:

Panel welded to the base of the skid and braced at the top to the expansion water tank that is supported by the Diesel Skid.

Seismic Walkdown Team: J. Griffith & M. Wodarczyk - 7/31/2012

Evaluated by: James D. Griffith James Griffith Date: 9/30/2012

Michael J. Wodarczyk Michael Wodarczyk 9/30/2012

Status: ☒ Y ☐ N ☐ U

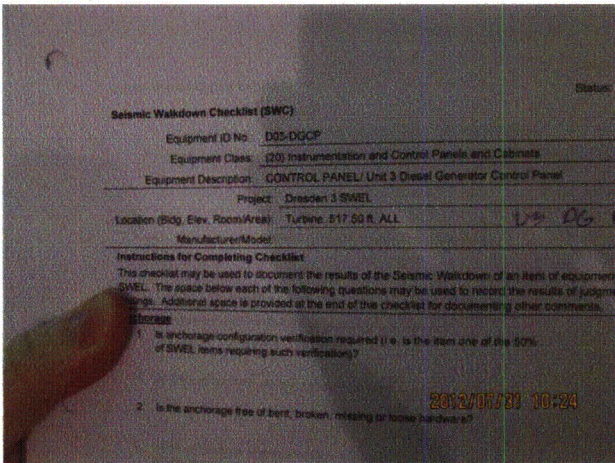
Seismic Walkdown Checklist (SWC)

Equipment ID No.: D03-DGCP

Equipment Class: (20) Instrumentation and Control Panels and Cabinets

Equipment Description: CONTROL PANEL/ Unit 3 Diesel Generator Control Panel

Photos



20120731-Dresden-3 196



20120731-Dresden-3 197



20120731-Dresden-3 198



20120731-Dresden-3 199

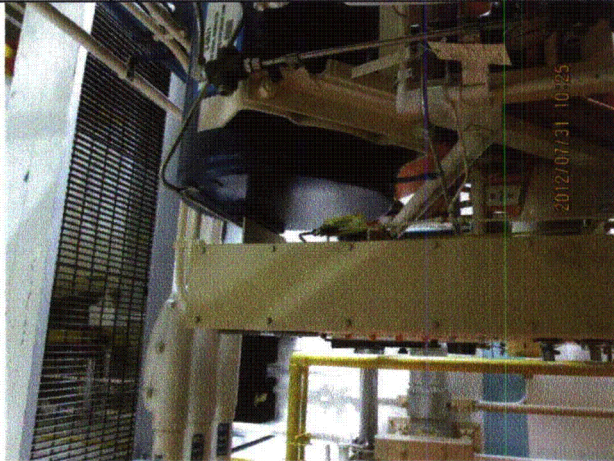
Status: ☒ Y ☐ N ☐ U

Seismic Walkdown Checklist (SWC)

Equipment ID No.: D03-DGCP

Equipment Class: (20) Instrumentation and Control Panels and Cabinets

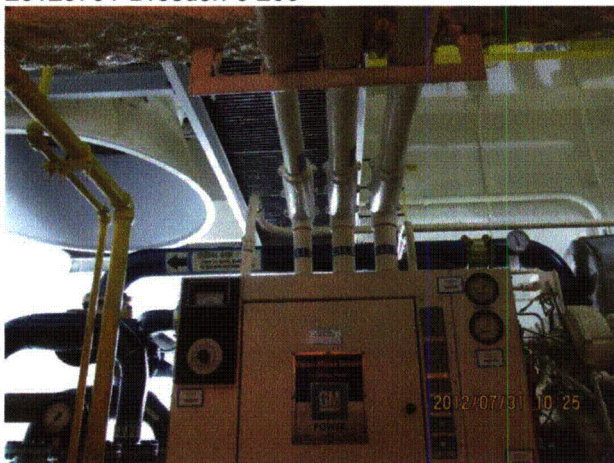
Equipment Description: CONTROL PANEL/ Unit 3 Diesel Generator Control Panel



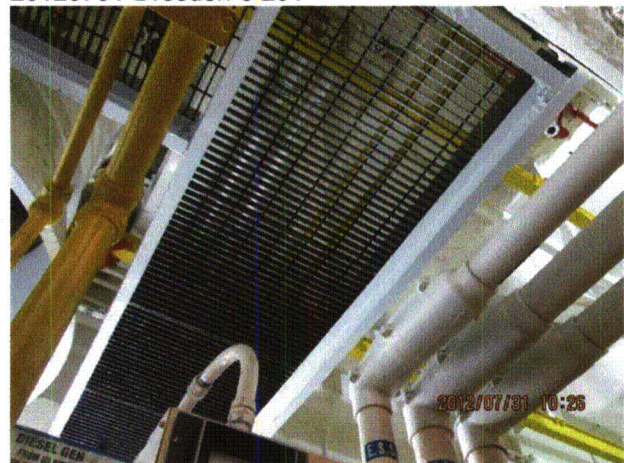
20120731-Dresden-3 200



20120731-Dresden-3 201



20120731-Dresden-3 202



20120731-Dresden-3 203

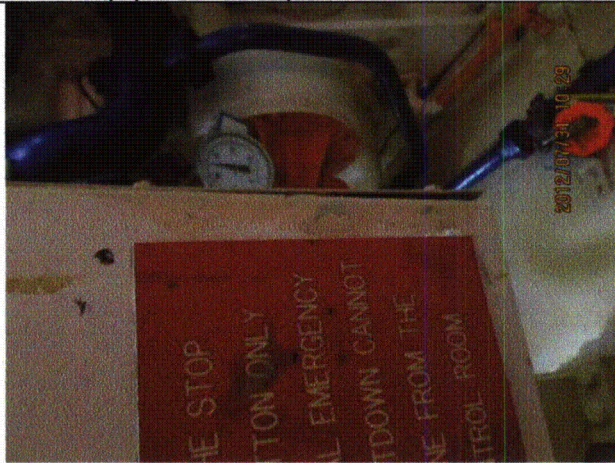
Status: ☒ Y ☐ N ☐ U

Seismic Walkdown Checklist (SWC)

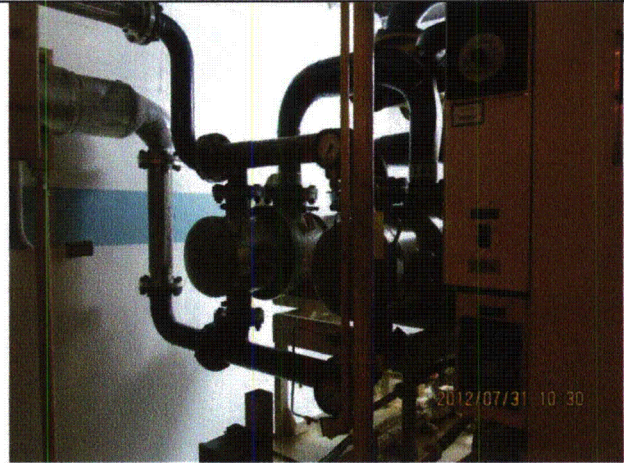
Equipment ID No.: D03-DGCP

Equipment Class: (20) Instrumentation and Control Panels and Cabinets

Equipment Description: CONTROL PANEL/ Unit 3 Diesel Generator Control Panel



20120731-Dresden-3 204



20120731-Dresden-3 205

Status: ☒ Y ☐ N ☐ U

Seismic Walkdown Checklist (SWC)

Equipment ID No.: D03-NGC

Equipment Class: (20) Instrumentation and Control Panels and Cabinets

Equipment Description: CONTROL PANEL/ Unit 3 Neutral Grounding Cabinet

Project: Dresden 3 SWEL

Location (Bldg, Elev, Room/Area): Turbine, 517.50 ft, ALL

Manufacturer/Model: _____

Instructions for Completing Checklist

This checklist may be used to document the results of the Seismic Walkdown of an item of equipment on the SWEL. The space below each of the following questions may be used to record the results of judgments and findings. Additional space is provided at the end of this checklist for documenting other comments.

Anchorage

1. Is anchorage configuration verification required (i.e., is the item one of the 50% of SWEL items requiring such verification)? No
2. Is the anchorage free of bent, broken, missing or loose hardware? Yes
3. Is the anchorage free of corrosion that is more than mild surface oxidation? Yes
4. Is the anchorage free of visible cracks in the concrete near the anchors? Yes
Minor shrinkage cracks in floor judged to be acceptable.
5. Is the anchorage configuration consistent with plant documentation? (Note: This question only applies if the item is one of the 50% for which an anchorage configuration verification is required.) Not Applicable
6. Based on the above anchorage evaluations, is the anchorage free of potentially adverse seismic conditions? Yes

Status: ☒ Y ☐ N ☐ U

Seismic Walkdown Checklist (SWC)

Equipment ID No.: D03-NGC

Equipment Class: (20) Instrumentation and Control Panels and Cabinets

Equipment Description: CONTROL PANEL/ Unit 3 Neutral Grounding Cabinet

Interaction Effects

7. Are soft targets free from impact by nearby equipment or structures? Yes

Emergency light No. 313 is judged to be adequately restrained.

8. Are overhead equipment, distribution systems, ceiling tiles and lighting, and masonry block walls not likely to collapse onto the equipment? Yes

9. Do attached lines have adequate flexibility to avoid damage? Yes

10. Based on the above seismic interaction evaluations, is equipment free of potentially adverse seismic interaction effects? Yes

Other Adverse Conditions

11. Have you looked for and found no adverse seismic conditions that could adversely affect the safety functions of the equipment? Yes

Comments

Seismic Walkdown Team: J. Griffith & M. Wodarczyk - 7/31/2012

Evaluated by: James D. Griffith James Griffith

Date: 9/30/2012

Michael J. Wodarczyk

Michael Wodarczyk

9/30/2012

Status: ☒ Y ☐ N ☐ U

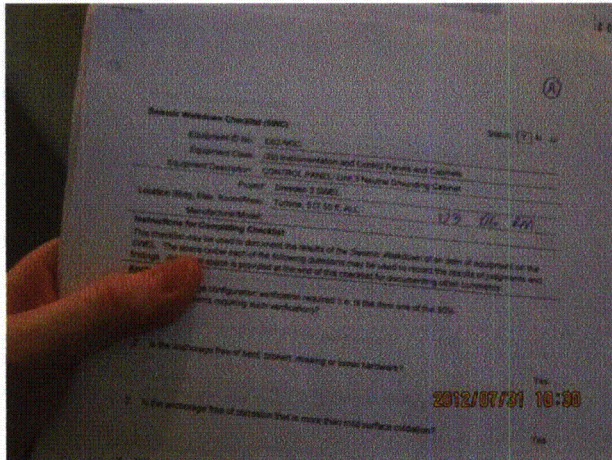
Seismic Walkdown Checklist (SWC)

Equipment ID No.: D03-NGC

Equipment Class: (20) Instrumentation and Control Panels and Cabinets

Equipment Description: CONTROL PANEL/ Unit 3 Neutral Grounding Cabinet

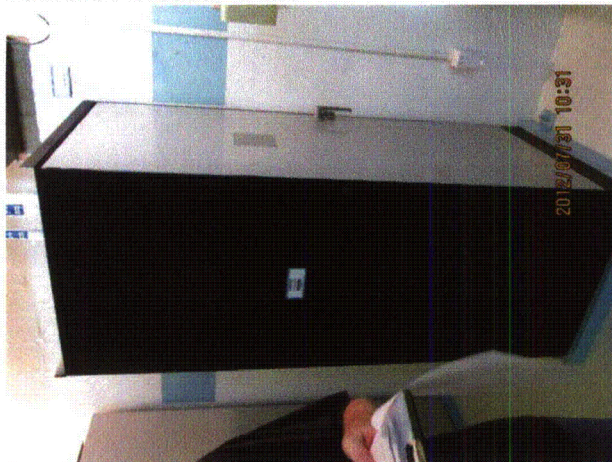
Photos



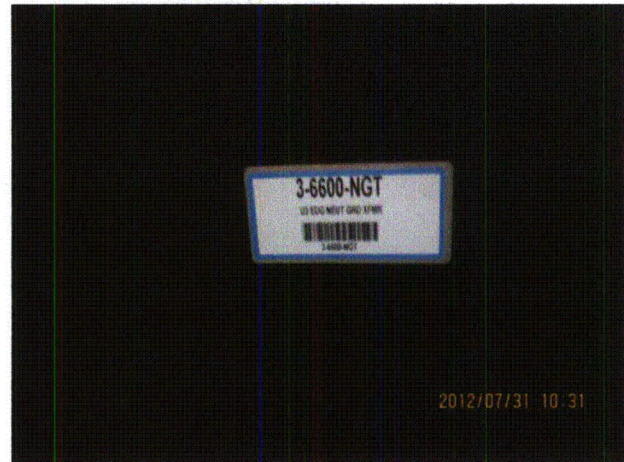
20120731-Dresden-3 206



20120731-Dresden-3 207



20120731-Dresden-3 208



20120731-Dresden-3 209

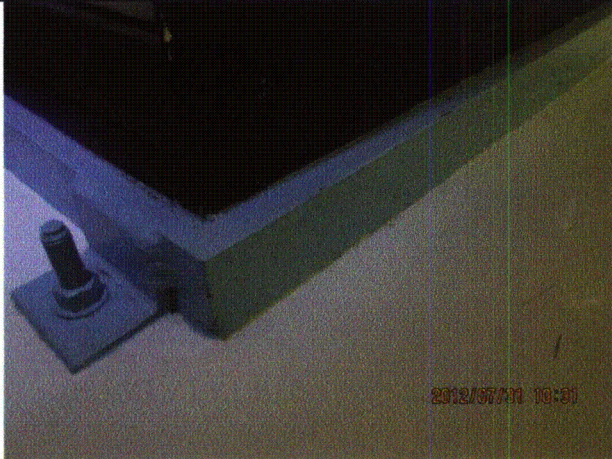
Status: ☒ Y ☐ N ☐ U

Seismic Walkdown Checklist (SWC)

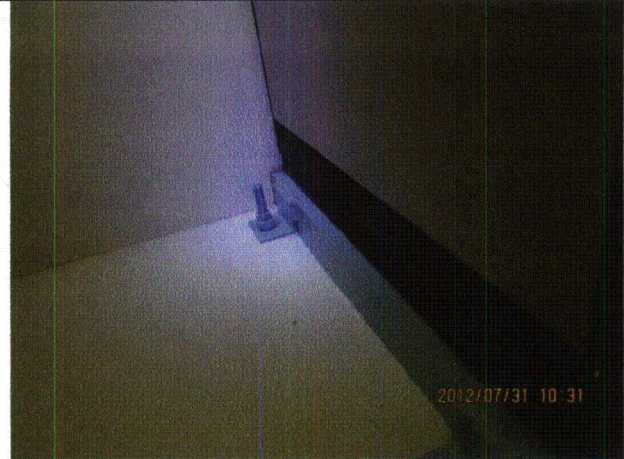
Equipment ID No.: D03-NGC

Equipment Class: (20) Instrumentation and Control Panels and Cabinets

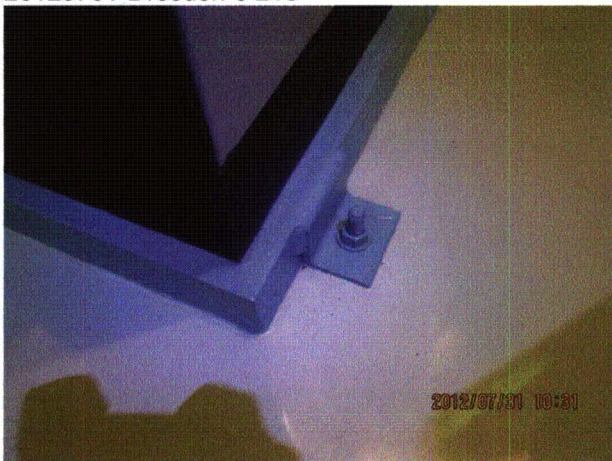
Equipment Description: CONTROL PANEL/ Unit 3 Neutral Grounding Cabinet



20120731-Dresden-3 210



20120731-Dresden-3 211



20120731-Dresden-3 212



20120731-Dresden-3 213

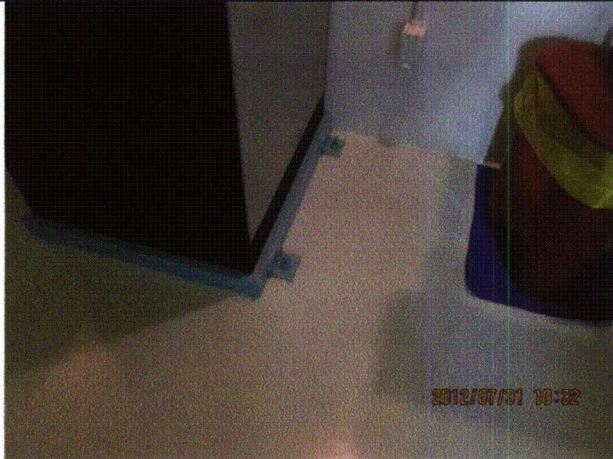
Status: ☒ Y ☐ N ☐ U

Seismic Walkdown Checklist (SWC)

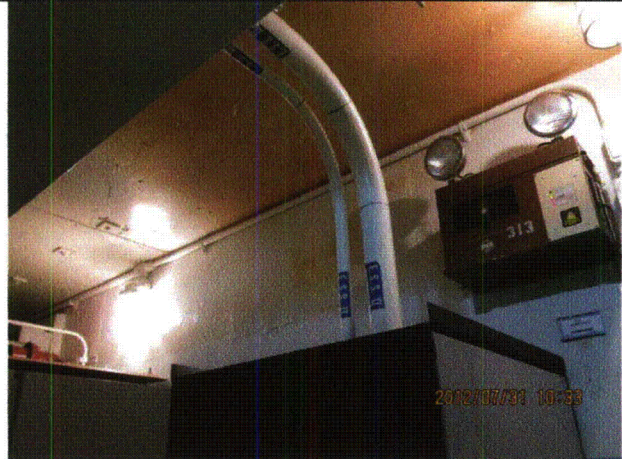
Equipment ID No.: D03-NGC

Equipment Class: (20) Instrumentation and Control Panels and Cabinets

Equipment Description: CONTROL PANEL/ Unit 3 Neutral Grounding Cabinet



20120731-Dresden-3 214



20120731-Dresden-3 215



20120731-Dresden-3 216



20120731-Dresden-3 217

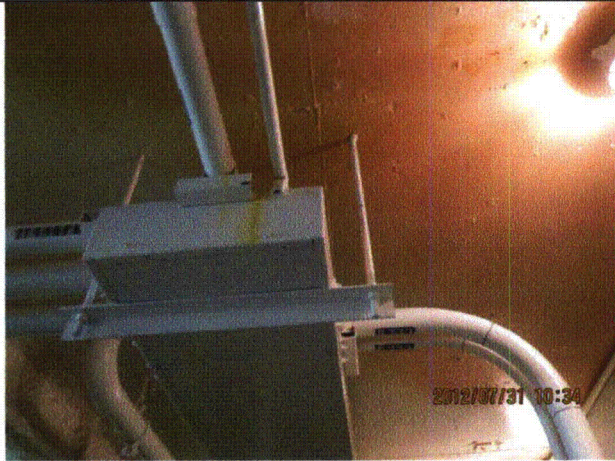
Status: ☒ Y ☐ N ☐ U

Seismic Walkdown Checklist (SWC)

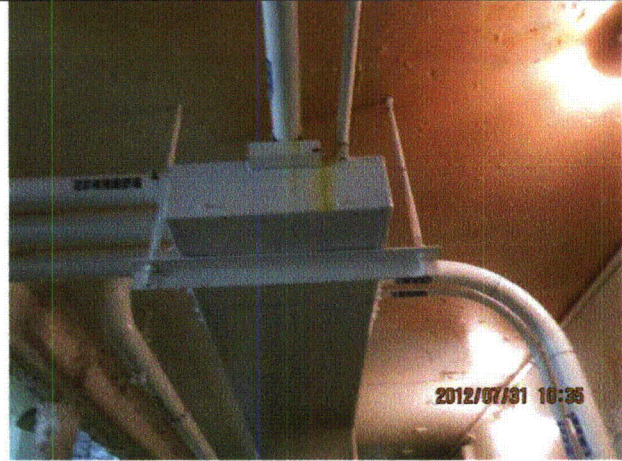
Equipment ID No.: D03-NGC

Equipment Class: (20) Instrumentation and Control Panels and Cabinets

Equipment Description: CONTROL PANEL/ Unit 3 Neutral Grounding Cabinet



20120731-Dresden-3 218



20120731-Dresden-3 219