

Status: ☒ Y ☐ N ☐ U

### Seismic Walkdown Checklist (SWC)

Equipment ID No.: D03-7838-1-1--P06

Equipment Class: (20) Instrumentation and Control Panels and Cabinets

Equipment Description: DISTRIBUTION PANELS/ Distribution Panel 38-1-1

Project: Dresden 3 SWEL

Location (Bldg, Elev, Room/Area): Reactor, 517.50 ft, ALL

Manufacturer/Model: \_\_\_\_\_

#### Instructions for Completing Checklist

This checklist may be used to document the results of the Seismic Walkdown of an item of equipment on the SWEL. The space below each of the following questions may be used to record the results of judgments and findings. Additional space is provided at the end of this checklist for documenting other comments.

#### Anchorage

1. Is anchorage configuration verification required (i.e., is the item one of the 50% of SWEL items requiring such verification)? Yes
2. Is the anchorage free of bent, broken, missing or loose hardware? Yes
3. Is the anchorage free of corrosion that is more than mild surface oxidation? Yes
4. Is the anchorage free of visible cracks in the concrete near the anchors? Yes  
*Minor shrinkage cracks in floor judged to be acceptable.*
5. Is the anchorage configuration consistent with plant documentation? (Note: This question only applies if the item is one of the 50% for which an anchorage configuration verification is required.) Yes
6. Based on the above anchorage evaluations, is the anchorage free of potentially adverse seismic conditions? Yes

Status: ☒ Y ☐ N ☐ U

**Seismic Walkdown Checklist (SWC)**

Equipment ID No.: D03-7838-1-1--P06

Equipment Class: (20) Instrumentation and Control Panels and Cabinets

Equipment Description: DISTRIBUTION PANELS/ Distribution Panel 38-1-1

**Interaction Effects**

7. Are soft targets free from impact by nearby equipment or structures? Yes
8. Are overhead equipment, distribution systems, ceiling tiles and lighting, and masonry block walls not likely to collapse onto the equipment? Yes  
*Emergency light adequately restrained.*
9. Do attached lines have adequate flexibility to avoid damage? Yes
10. Based on the above seismic interaction evaluations, is equipment free of potentially adverse seismic interaction effects? Yes

**Other Adverse Conditions**

11. Have you looked for and found no adverse seismic conditions that could adversely affect the safety functions of the equipment? Yes

**Comments**

SEWS Anchorage Notes:

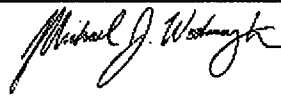
Panel bolted in each corner to Unistrut. The unistrut is bolted to the wall with three 3/8" shell expansion anchors on each side.

\*\*\*\*\*

Seismic Walkdown Team: J. Griffith & M. Wodarczyk - 8/1/2012

Evaluated by:  James Griffith

Date: 9/30/2012



Michael Wodarczyk

9/30/2012



Equipment Description: DISTRIBUTION PANELS/ Distribution Panel 38-1-1

[illegible]

38-1-1

2012/06/01 09:20

A photograph of a white metal safe with its door open. The safe is mounted on a wall. Inside the safe, there are several compartments and a digital display showing '0.00'. A timestamp '2012/08/01 09:20' is visible in the bottom right corner.

20120801-Dresden-3 092



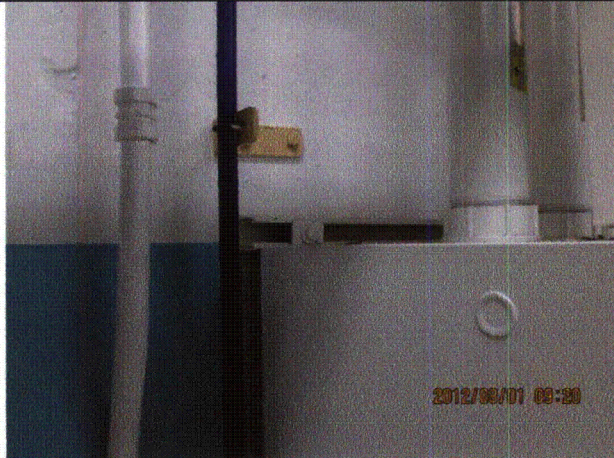
Status: ☒ Y ☐ N ☐ U

**Seismic Walkdown Checklist (SWC)**

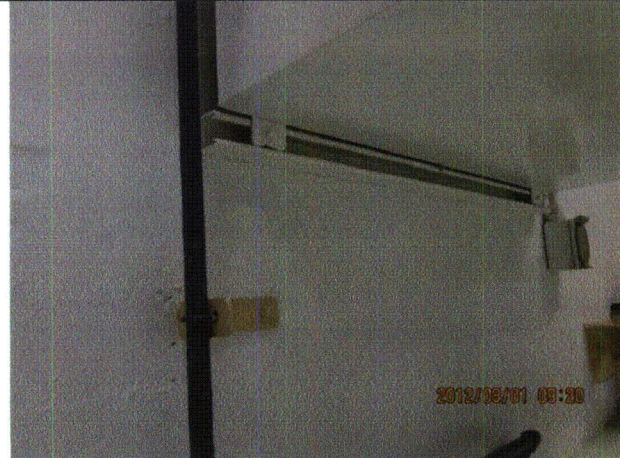
Equipment ID No.: D03-7838-1-1--P06

Equipment Class: (20) Instrumentation and Control Panels and Cabinets

Equipment Description: DISTRIBUTION PANELS/ Distribution Panel 38-1-1



20120801-Dresden-3 093



20120801-Dresden-3 094



20120801-Dresden-3 095



20120801-Dresden-3 096



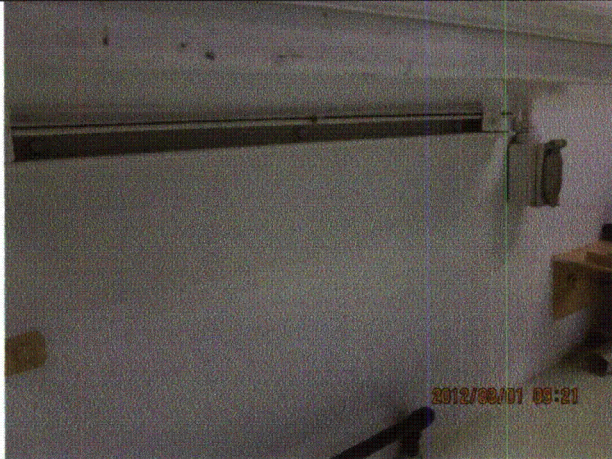
Status: ☒ Y ☐ N ☐ U

**Seismic Walkdown Checklist (SWC)**

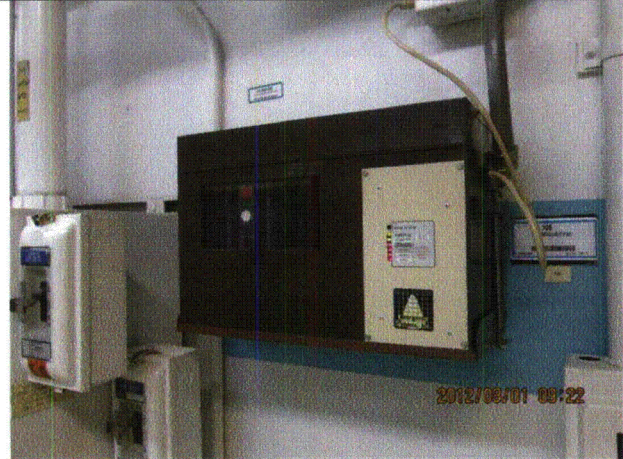
Equipment ID No.: D03-7838-1-1--P06

Equipment Class: (20) Instrumentation and Control Panels and Cabinets

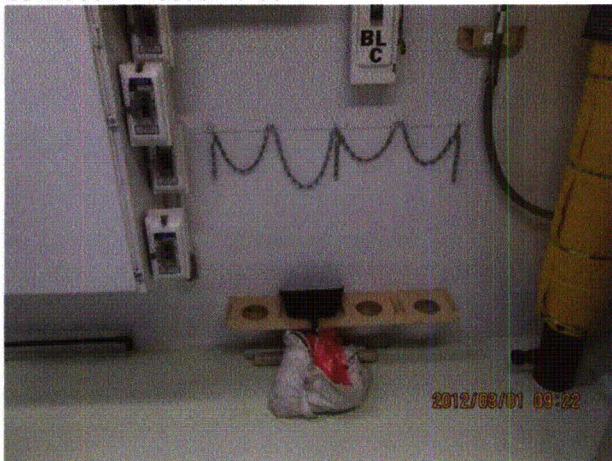
Equipment Description: DISTRIBUTION PANELS/ Distribution Panel 38-1-1



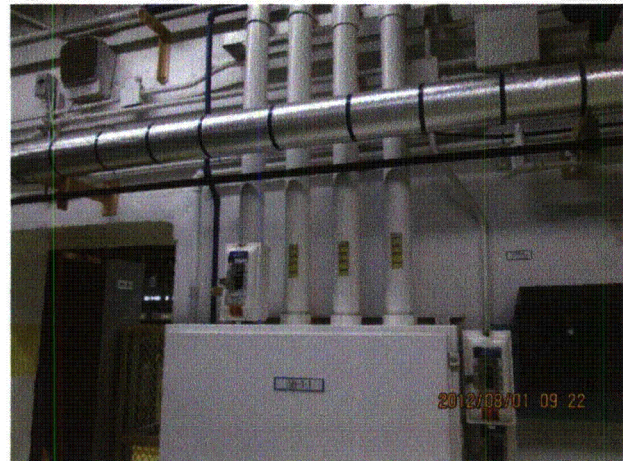
20120801-Dresden-3 097



20120801-Dresden-3 098



20120801-Dresden-3 099



20120801-Dresden-3 100



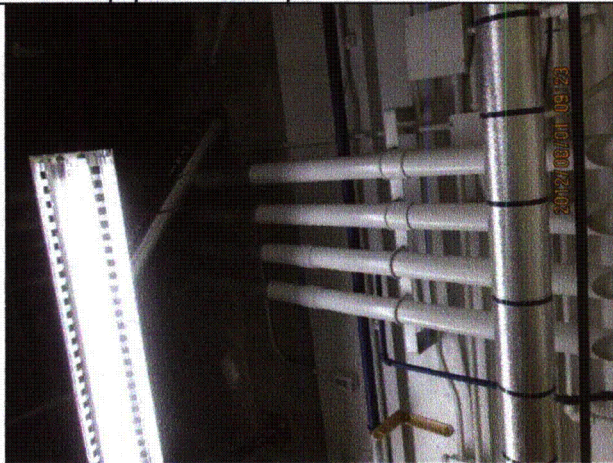
Status: ☒ Y ☐ N ☐ U

**Seismic Walkdown Checklist (SWC)**

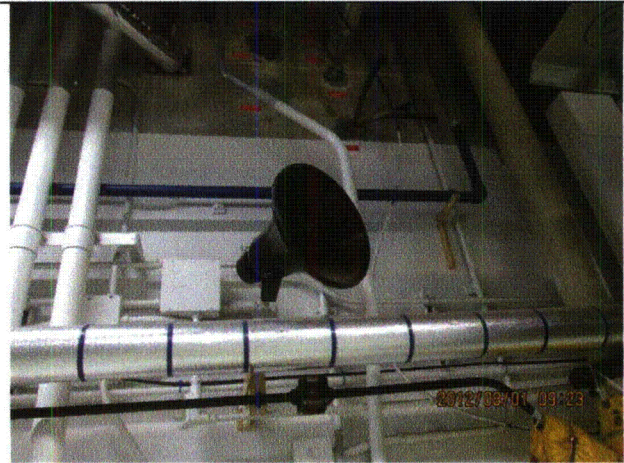
Equipment ID No.: D03-7838-1-1--P06

Equipment Class: (20) Instrumentation and Control Panels and Cabinets

Equipment Description: DISTRIBUTION PANELS/ Distribution Panel 38-1-1



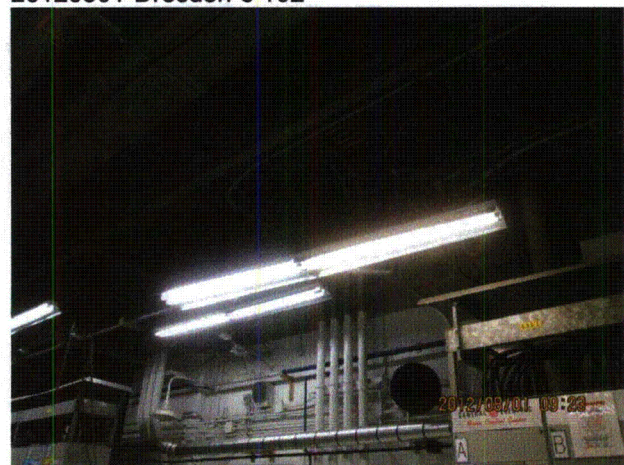
20120801-Dresden-3 101



20120801-Dresden-3 102



20120801-Dresden-3 103



20120801-Dresden-3 104



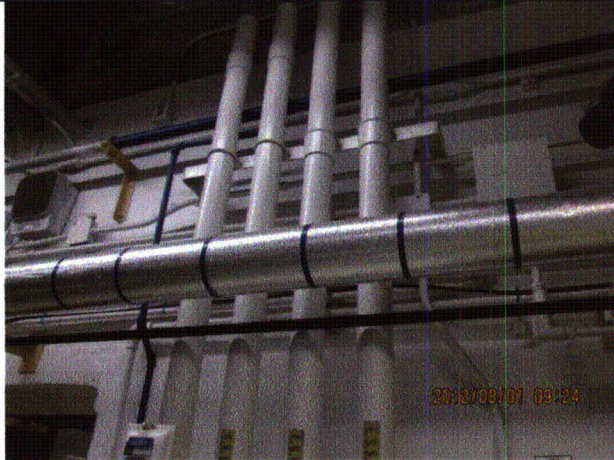
Status: ☒ Y ☐ N ☐ U

**Seismic Walkdown Checklist (SWC)**

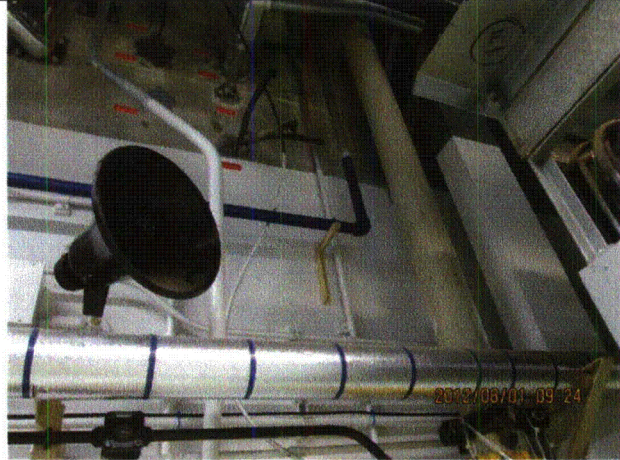
Equipment ID No.: D03-7838-1-1--P06

Equipment Class: (20) Instrumentation and Control Panels and Cabinets

Equipment Description: DISTRIBUTION PANELS/ Distribution Panel 38-1-1



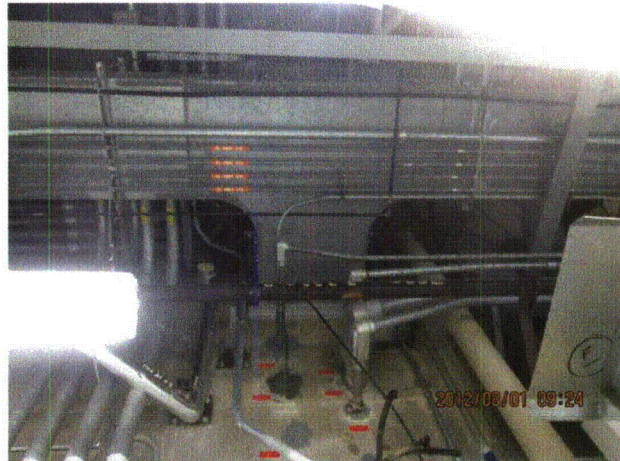
20120801-Dresden-3 105



20120801-Dresden-3 106



20120801-Dresden-3 107



20120801-Dresden-3 108



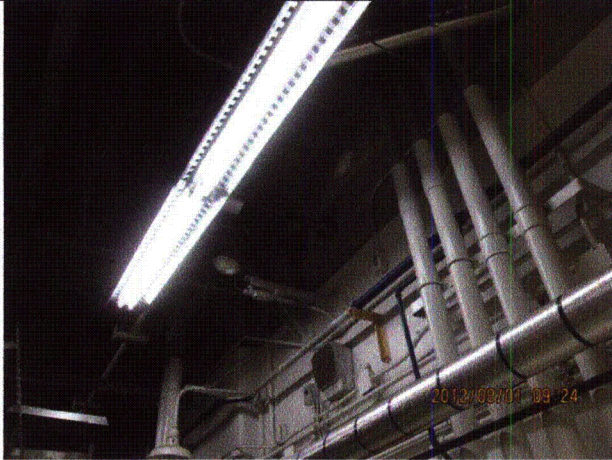
Status: ☒ Y ☐ N ☐ U

**Seismic Walkdown Checklist (SWC)**

Equipment ID No.: D03-7838-1-1--P06

Equipment Class: (20) Instrumentation and Control Panels and Cabinets

Equipment Description: DISTRIBUTION PANELS/ Distribution Panel 38-1-1



20120801-Dresden-3 109



20120801-Dresden-3 110

Status: ☒ Y ☐ N ☐ U

### Seismic Walkdown Checklist (SWC)

Equipment ID No.: D03-7838-2---M05

Equipment Class: (1) Motor Control Centers

Equipment Description: 480V AC/ MCC 38-2

Project: Dresden 3 SWEL

Location (Bldg, Elev, Room/Area): Turbine, 538.00 ft, ALL

Manufacturer/Model: \_\_\_\_\_

#### Instructions for Completing Checklist

This checklist may be used to document the results of the Seismic Walkdown of an item of equipment on the SWEL. The space below each of the following questions may be used to record the results of judgments and findings. Additional space is provided at the end of this checklist for documenting other comments.

#### Anchorage

1. Is anchorage configuration verification required (i.e., is the item one of the 50% of SWEL items requiring such verification)? Yes
2. Is the anchorage free of bent, broken, missing or loose hardware? Yes
3. Is the anchorage free of corrosion that is more than mild surface oxidation? Yes
4. Is the anchorage free of visible cracks in the concrete near the anchors? Yes  
*Minor shrinkage cracks in floor judged acceptable.*
5. Is the anchorage configuration consistent with plant documentation? (Note: This question only applies if the item is one of the 50% for which an anchorage configuration verification is required.) Yes
6. Based on the above anchorage evaluations, is the anchorage free of potentially adverse seismic conditions? Yes

Status: ☒ Y ☐ N ☐ U

**Seismic Walkdown Checklist (SWC)**

Equipment ID No.: D03-7838-2---M05

Equipment Class: (1) Motor Control Centers

Equipment Description: 480V AC/ MCC 38-2

**Interaction Effects**

- |  |     |
|--|-----|
| 7. Are soft targets free from impact by nearby equipment or structures?  | Yes |
| 8. Are overhead equipment, distribution systems, ceiling tiles and lighting, and masonry block walls not likely to collapse onto the equipment?<br><i>Overhead light fixtures are judged acceptable.</i> | Yes |
| 9. Do attached lines have adequate flexibility to avoid damage?  | Yes |
| 10. Based on the above seismic interaction evaluations, is equipment free of potentially adverse seismic interaction effects?  | Yes |

**Other Adverse Conditions**

- |  |     |
|--|-----|
| 11. Have you looked for and found no adverse seismic conditions that could adversely affect the safety functions of the equipment? | Yes |
|--|-----|

**Comments**

SEWS Anchorage Notes:

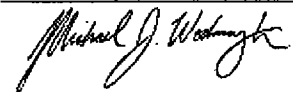
MCC stitch welded to edge angle embedded in concrete.

\*\*\*\*\*

Seismic Walkdown Team: J. Griffith & M. Wodarczyk - 7/31/2012

Evaluated by:  James Griffith

Date: 9/30/2012



Michael Wodarczyk

9/30/2012



Status: ☒ Y ☐ N ☐ U

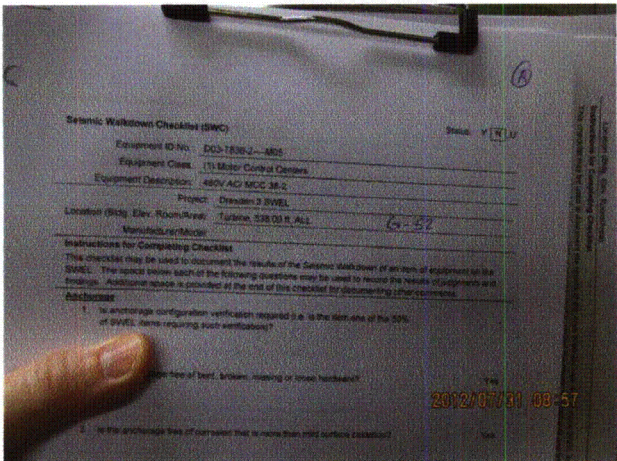
Seismic Walkdown Checklist (SWC)

Equipment ID No.: D03-7838-2----M05

Equipment Class: (1) Motor Control Centers

Equipment Description: 480V AC/ MCC 38-2

Photos



20120731-Dresden-3 088



20120731-Dresden-3 089



20120731-Dresden-3 090



20120731-Dresden-3 091



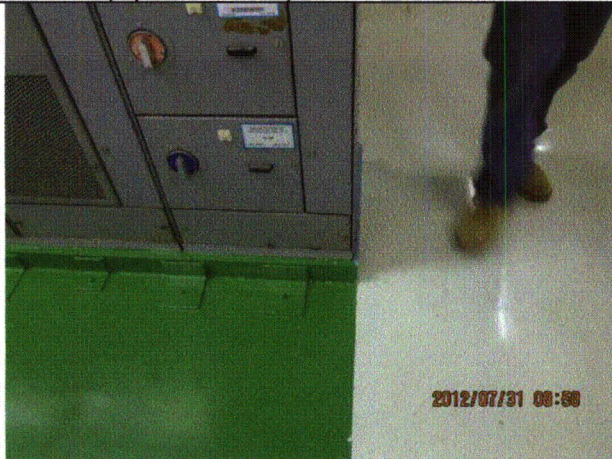
Status: ☒ Y ☐ N ☐ U

**Seismic Walkdown Checklist (SWC)**

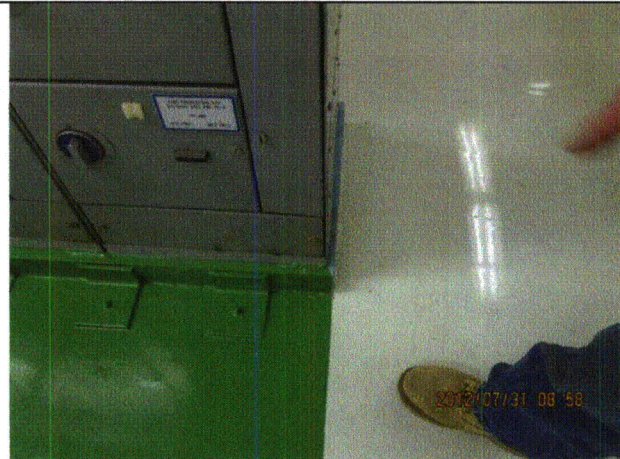
Equipment ID No.: D03-7838-2---M05

Equipment Class: (1) Motor Control Centers

Equipment Description: 480V AC/ MCC 38-2



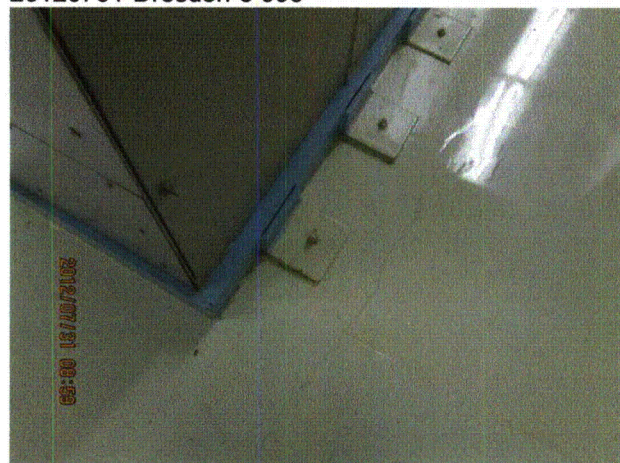
20120731-Dresden-3 092



20120731-Dresden-3 093



20120731-Dresden-3 094



20120731-Dresden-3 095



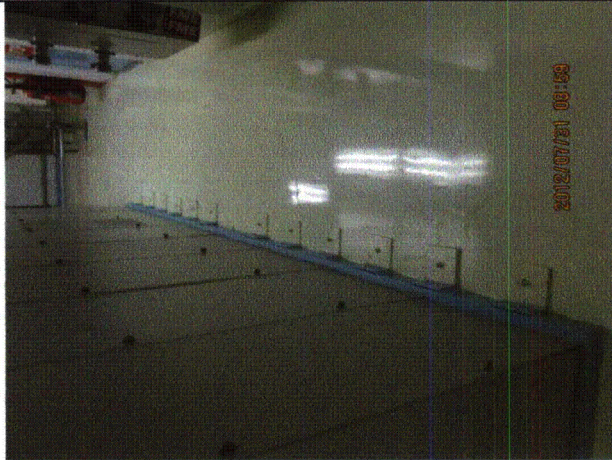
Status: ☒ Y ☐ N ☐ U

**Seismic Walkdown Checklist (SWC)**

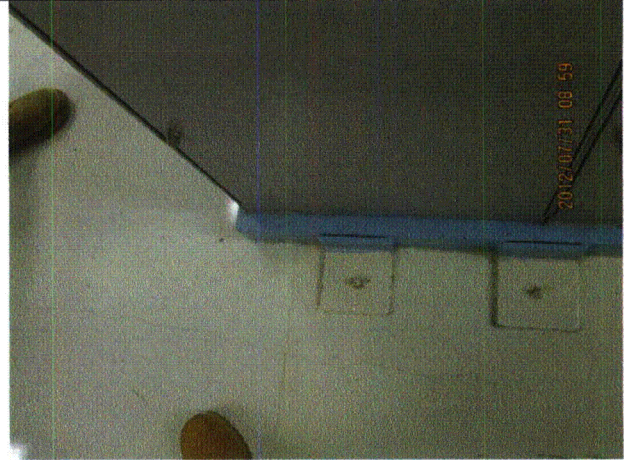
Equipment ID No.: D03-7838-2----M05

Equipment Class: (1) Motor Control Centers

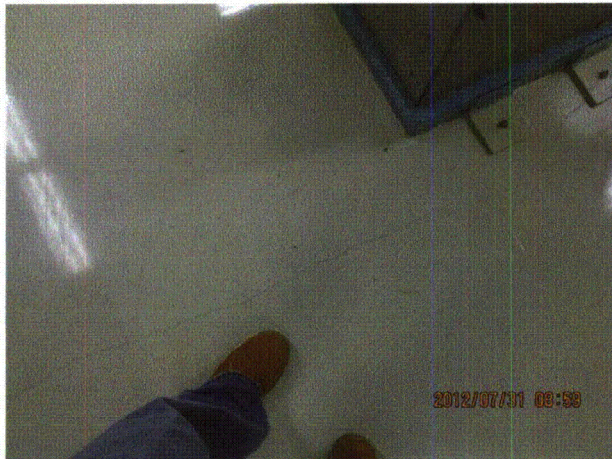
Equipment Description: 480V AC/ MCC 38-2



20120731-Dresden-3 096



20120731-Dresden-3 097



20120731-Dresden-3 098



20120731-Dresden-3 099



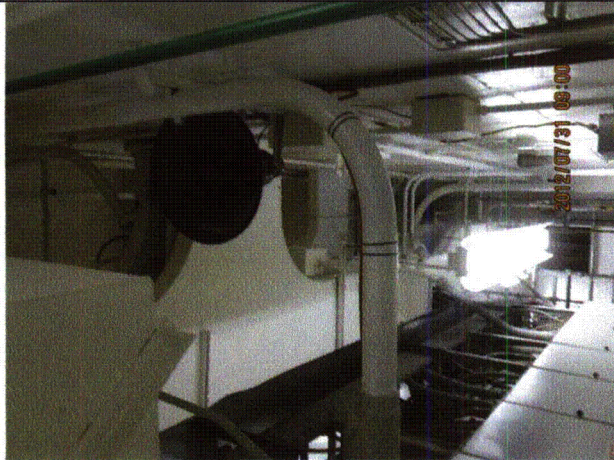
Status: ☒ Y ☐ N ☐ U

**Seismic Walkdown Checklist (SWC)**

Equipment ID No.: D03-7838-2----M05

Equipment Class: (1) Motor Control Centers

Equipment Description: 480V AC/ MCC 38-2



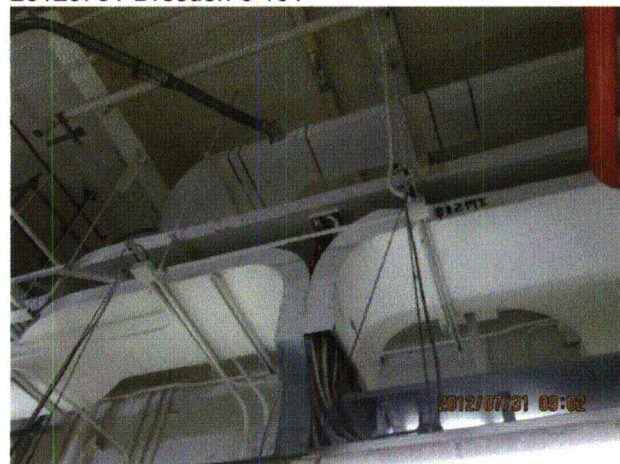
20120731-Dresden-3 100



20120731-Dresden-3 101



20120731-Dresden-3 102



20120731-Dresden-3 103



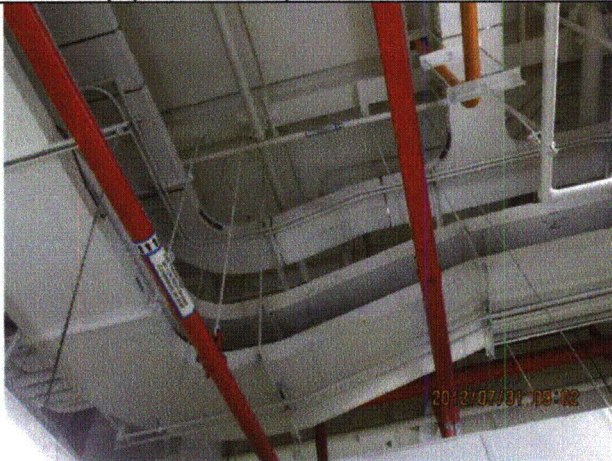
Status: ☒ Y ☐ N ☐ U

**Seismic Walkdown Checklist (SWC)**

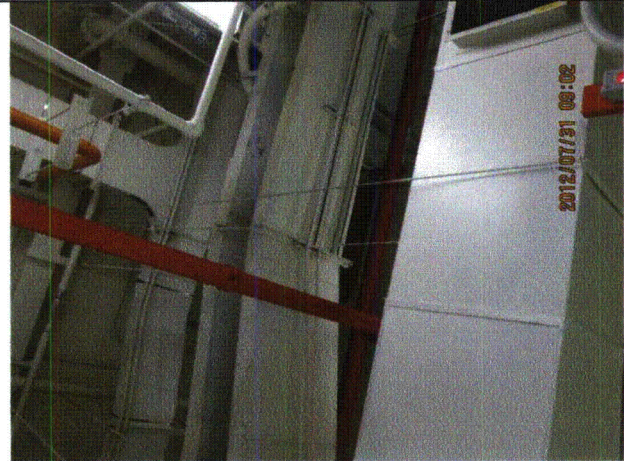
Equipment ID No.: D03-7838-2----M05

Equipment Class: (1) Motor Control Centers

Equipment Description: 480V AC/ MCC 38-2



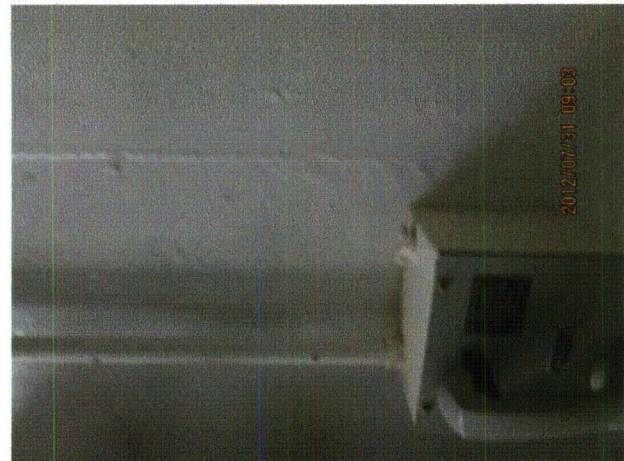
20120731-Dresden-3 104



20120731-Dresden-3 105



20120731-Dresden-3 106



20120731-Dresden-3 107

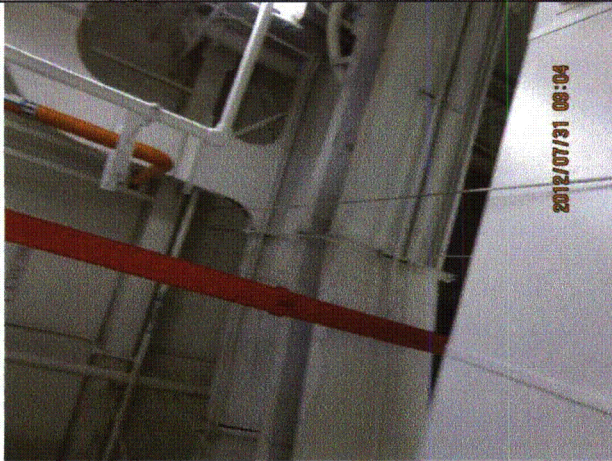
Status: ☒ Y ☐ N ☐ U

**Seismic Walkdown Checklist (SWC)**

Equipment ID No.: D03-7838-2----M05

Equipment Class: (1) Motor Control Centers

Equipment Description: 480V AC/ MCC 38-2



20120731-Dresden-3 108

Status: ☒ Y ☐ N ☐ U

**Seismic Walkdown Checklist (SWC)**

Equipment ID No.: D03-7839-2---M05

Equipment Class: (1) Motor Control Centers

Equipment Description: 480V AC/ MCC 39-2

Project: Dresden 3 SWEL

Location (Bldg, Elev, Room/Area): Turbine, 534.00 ft, ALL

Manufacturer/Model: \_\_\_\_\_

**Instructions for Completing Checklist**

This checklist may be used to document the results of the Seismic Walkdown of an item of equipment on the SWEL. The space below each of the following questions may be used to record the results of judgments and findings. Additional space is provided at the end of this checklist for documenting other comments.

**Anchorage**

1. Is anchorage configuration verification required (i.e., is the item one of the 50% of SWEL items requiring such verification)? Yes
  
2. Is the anchorage free of bent, broken, missing or loose hardware? Yes
  
3. Is the anchorage free of corrosion that is more than mild surface oxidation? Yes
  
4. Is the anchorage free of visible cracks in the concrete near the anchors? Yes  
*Minor shrinkage cracks in floor judged to be acceptable.*
  
5. Is the anchorage configuration consistent with plant documentation? (Note: This question only applies if the item is one of the 50% for which an anchorage configuration verification is required.) Yes
  
6. Based on the above anchorage evaluations, is the anchorage free of potentially adverse seismic conditions? Yes

Status: ☒ Y ☐ N ☐ U

**Seismic Walkdown Checklist (SWC)**

Equipment ID No.: D03-7839-2---M05

Equipment Class: (1) Motor Control Centers

Equipment Description: 480V AC/ MCC 39-2

**Interaction Effects**

7. Are soft targets free from impact by nearby equipment or structures? Yes

*Adjacent MCC 35-1 is judged to be adequately attached via intermittent welds to base pedestal.*

*Bottom of one door at back of MCC is slightly askew. Door is adequately latched and judged to be acceptable.*

8. Are overhead equipment, distribution systems, ceiling tiles and lighting, and masonry block walls not likely to collapse onto the equipment? Yes

9. Do attached lines have adequate flexibility to avoid damage? Yes

10. Based on the above seismic interaction evaluations, is equipment free of potentially adverse seismic interaction effects? Yes

**Other Adverse Conditions**

11. Have you looked for and found no adverse seismic conditions that could adversely affect the safety functions of the equipment? Yes

**Comments**

SEWS Anchorage Notes:

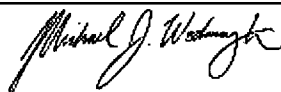
MCC stitch welded to edge angle embedded in concrete.

\*\*\*\*\*

Seismic Walkdown Team: J. Griffith & M. Wodarczyk - 7/31/2012

Evaluated by: James Griffith

Date: 9/30/2012



Michael Wodarczyk

9/30/2012



Status: ☒ Y ☐ N ☐ U

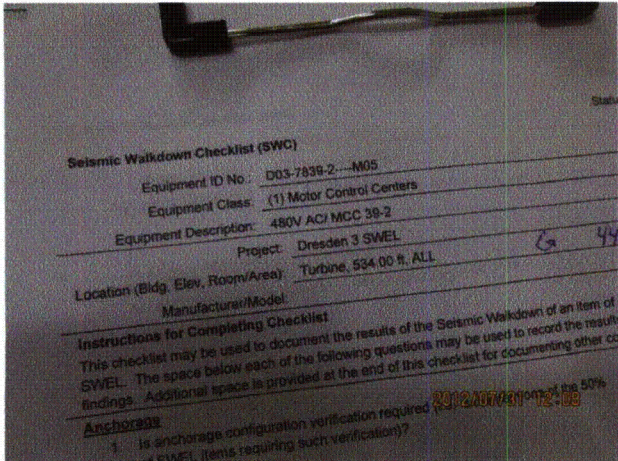
Seismic Walkdown Checklist (SWC)

Equipment ID No.: D03-7839-2----M05

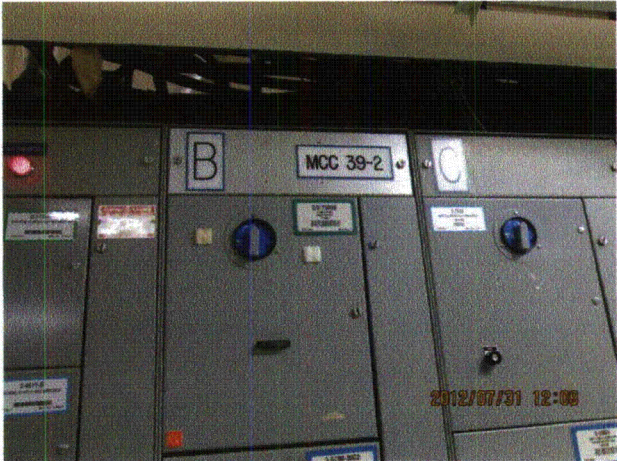
Equipment Class: (1) Motor Control Centers

Equipment Description: 480V AC/ MCC 39-2

Photos



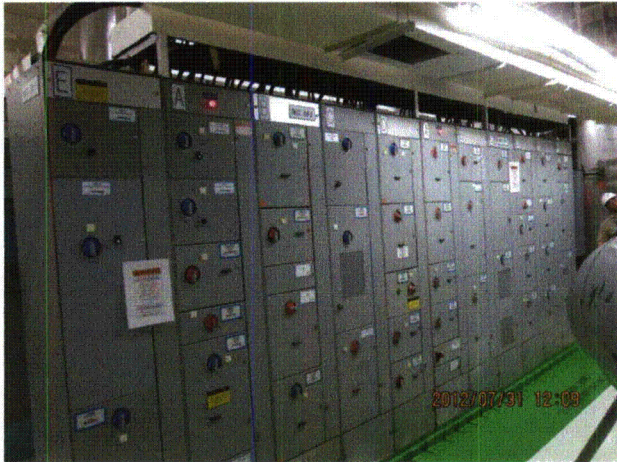
20120731-Dresden-3 267



20120731-Dresden-3 268



20120731-Dresden-3 269



20120731-Dresden-3 270



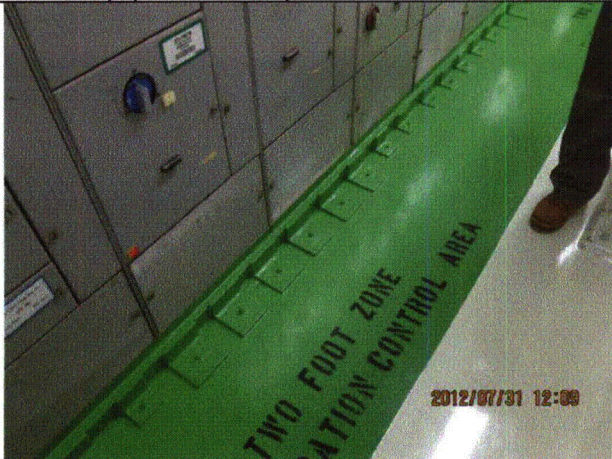
Status: ☒ Y ☐ N ☐ U

**Seismic Walkdown Checklist (SWC)**

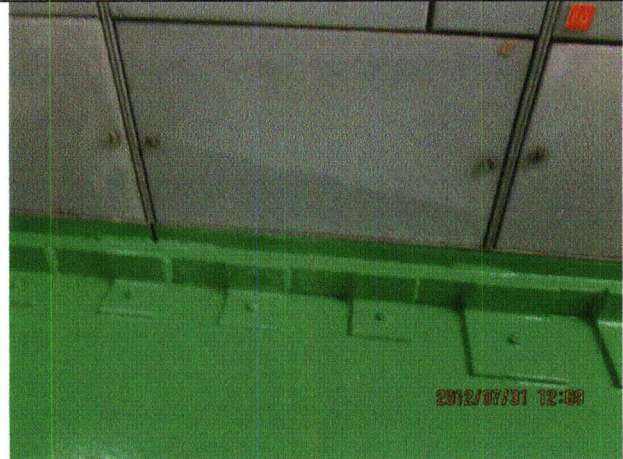
Equipment ID No.: D03-7839-2---M05

Equipment Class: (1) Motor Control Centers

Equipment Description: 480V AC/ MCC 39-2



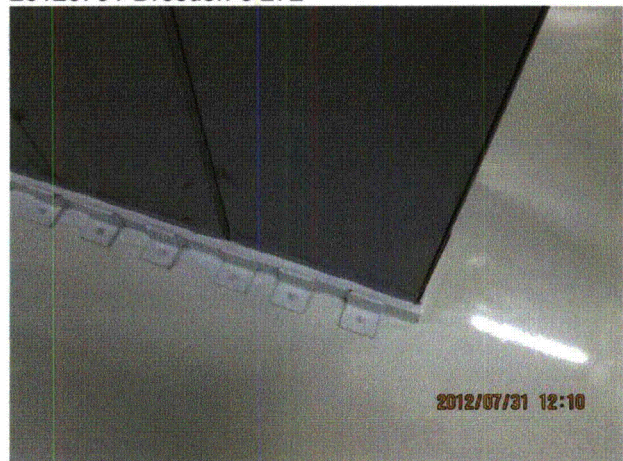
20120731-Dresden-3 271



20120731-Dresden-3 272



20120731-Dresden-3 273



20120731-Dresden-3 274



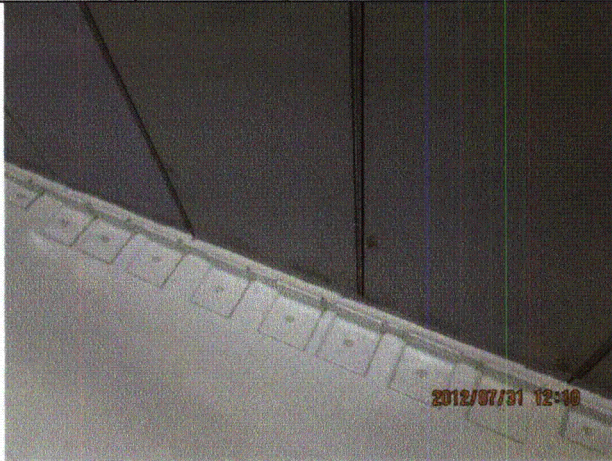
Status: ☒ Y ☐ N ☐ U

**Seismic Walkdown Checklist (SWC)**

Equipment ID No.: D03-7839-2----M05

Equipment Class: (1) Motor Control Centers

Equipment Description: 480V AC/ MCC 39-2



20120731-Dresden-3 275



20120731-Dresden-3 276



20120731-Dresden-3 277



20120731-Dresden-3 278



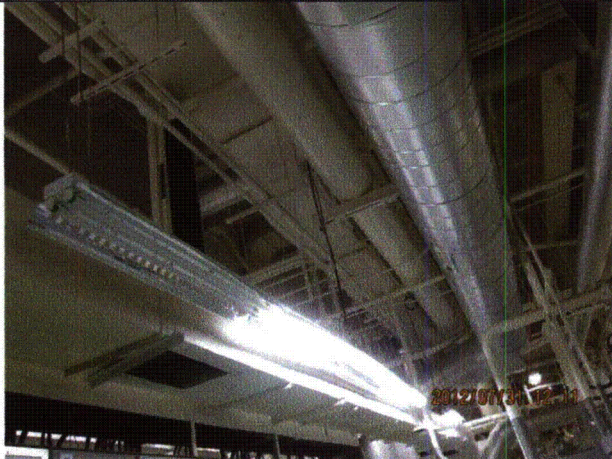
Status: ☒ Y ☐ N ☐ U

**Seismic Walkdown Checklist (SWC)**

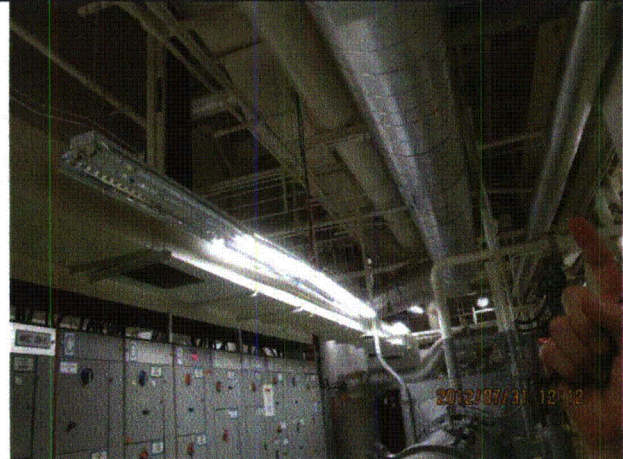
Equipment ID No.: D03-7839-2----M05

Equipment Class: (1) Motor Control Centers

Equipment Description: 480V AC/ MCC 39-2



20120731-Dresden-3 279



20120731-Dresden-3 280



20120731-Dresden-3 281



20120731-Dresden-3 282



Status: ☒ Y ☐ N ☐ U

**Seismic Walkdown Checklist (SWC)**

Equipment ID No.: D03-7839-2----M05

Equipment Class: (1) Motor Control Centers

Equipment Description: 480V AC/ MCC 39-2



20120731-Dresden-3 283



20120731-Dresden-3 284



20120731-Dresden-3 285

Status: ☒ Y ☐ N ☐ U

**Seismic Walkdown Checklist (SWC)**

Equipment ID No.: D03-8300--3A--B05

Equipment Class: (16) Battery Chargers and Inverters

Equipment Description: 125V DC/ Battery Charger #3A

Project: Dresden 3 SWEL

Location (Bldg, Elev, Room/Area): Turbine, 538.00 ft, ALL

Manufacturer/Model: \_\_\_\_\_

**Instructions for Completing Checklist**

This checklist may be used to document the results of the Seismic Walkdown of an item of equipment on the SWEL. The space below each of the following questions may be used to record the results of judgments and findings. Additional space is provided at the end of this checklist for documenting other comments.

**Anchorage**

- |  |                |
|--|----------------|
| 1. Is anchorage configuration verification required (i.e., is the item one of the 50% of SWEL items requiring such verification)?  | No             |
| 2. Is the anchorage free of bent, broken, missing or loose hardware?   | Yes            |
| 3. Is the anchorage free of corrosion that is more than mild surface oxidation?  | Yes            |
| 4. Is the anchorage free of visible cracks in the concrete near the anchors?   | Yes            |
| 5. Is the anchorage configuration consistent with plant documentation? (Note: This question only applies if the item is one of the 50% for which an anchorage configuration verification is required.) | Not Applicable |
| 6. Based on the above anchorage evaluations, is the anchorage free of potentially adverse seismic conditions?  | Yes            |

Status: ☒ Y ☐ N ☐ U

**Seismic Walkdown Checklist (SWC)**

Equipment ID No.: D03-8300--3A--B05

Equipment Class: (16) Battery Chargers and Inverters

Equipment Description: 125V DC/ Battery Charger #3A

**Interaction Effects**

7. Are soft targets free from impact by nearby equipment or structures? Yes
8. Are overhead equipment, distribution systems, ceiling tiles and lighting, and masonry block walls not likely to collapse onto the equipment? Yes  
*Overhead light fixtures judged acceptable.*
9. Do attached lines have adequate flexibility to avoid damage? Yes
10. Based on the above seismic interaction evaluations, is equipment free of potentially adverse seismic interaction effects? Yes

**Other Adverse Conditions**

11. Have you looked for and found no adverse seismic conditions that could adversely affect the safety functions of the equipment? Yes

**Comments**

Seismic Walkdown Team: J. Griffith & M. Wodarczyk - 7/31/2012

Evaluated by:

James D. Griffith James Griffith

Date: 9/30/2012

Michael J. Wodarczyk

Michael Wodarczyk

9/30/2012



Status: ☒ Y ☐ N ☐ U

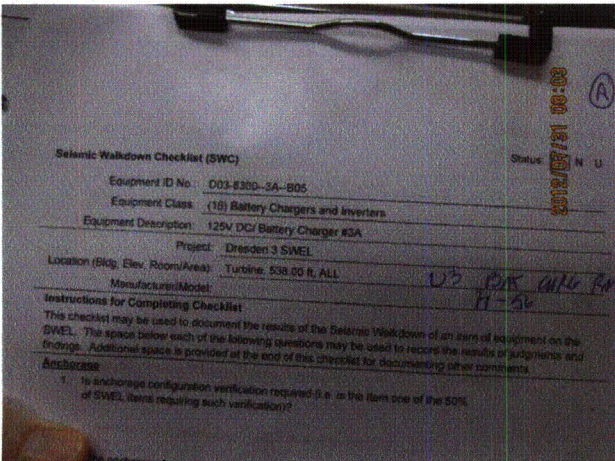
Seismic Walkdown Checklist (SWC)

Equipment ID No.: D03-8300--3A--B05

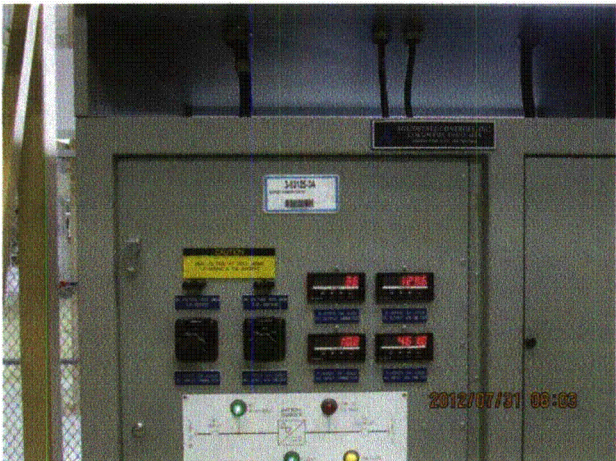
Equipment Class: (16) Battery Chargers and Inverters

Equipment Description: 125V DC/ Battery Charger #3A

Photos



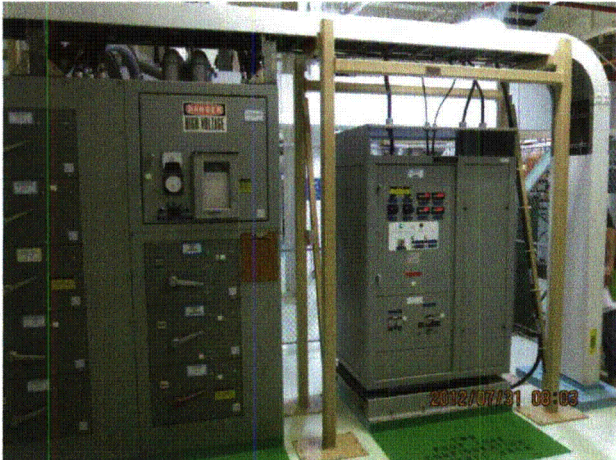
20120731-Dresden-3 001



20120731-Dresden-3 002



20120731-Dresden-3 003



20120731-Dresden-3 004



Status: ☒ Y ☐ N ☐ U

**Seismic Walkdown Checklist (SWC)**

Equipment ID No.: D03-8300--3A--B05

Equipment Class: (16) Battery Chargers and Inverters

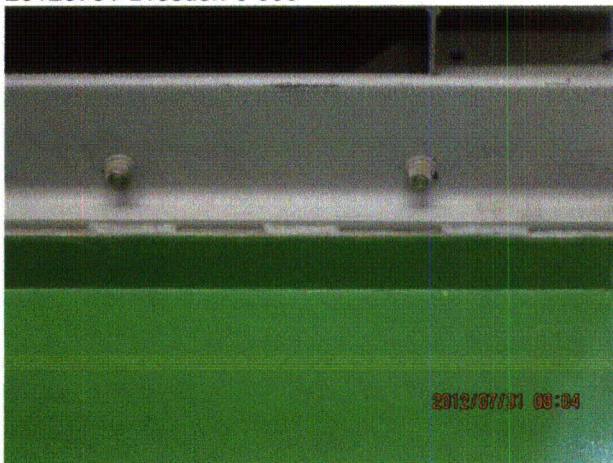
Equipment Description: 125V DC/ Battery Charger #3A



20120731-Dresden-3 005



20120731-Dresden-3 006



20120731-Dresden-3 007



20120731-Dresden-3 008



Status: ☒ Y ☐ N ☐ U

**Seismic Walkdown Checklist (SWC)**

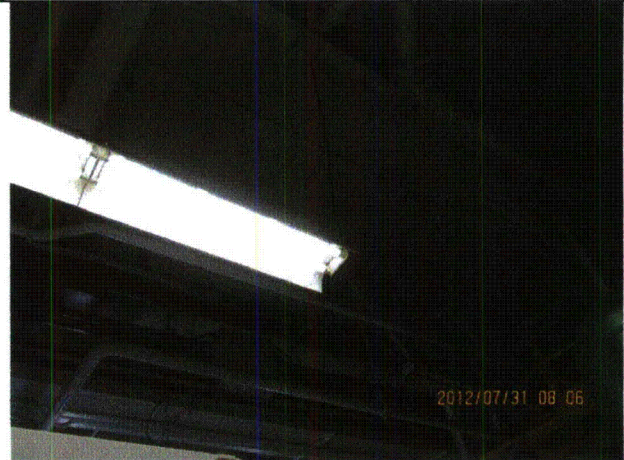
Equipment ID No.: D03-8300--3A--B05

Equipment Class: (16) Battery Chargers and Inverters

Equipment Description: 125V DC/ Battery Charger #3A



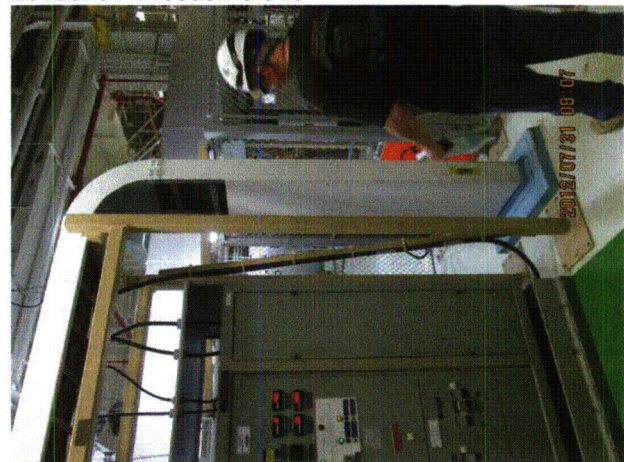
20120731-Dresden-3 009



20120731-Dresden-3 010



20120731-Dresden-3 011



20120731-Dresden-3 012



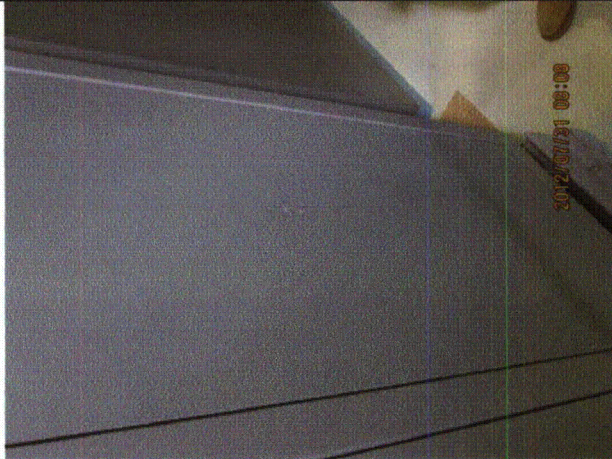
Status: ☒ Y ☐ N ☐ U

**Seismic Walkdown Checklist (SWC)**

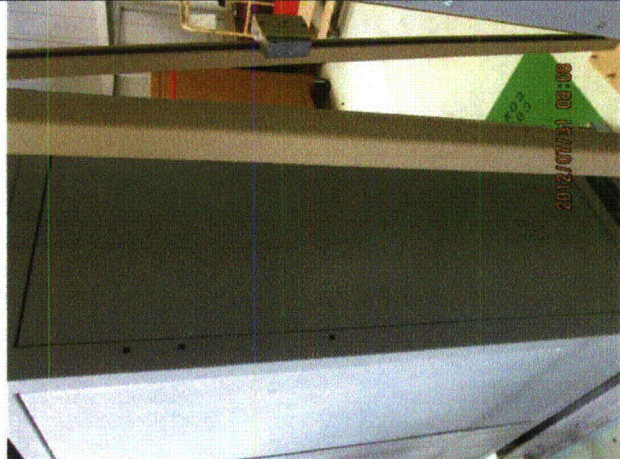
Equipment ID No.: D03-8300--3A--B05

Equipment Class: (16) Battery Chargers and Inverters

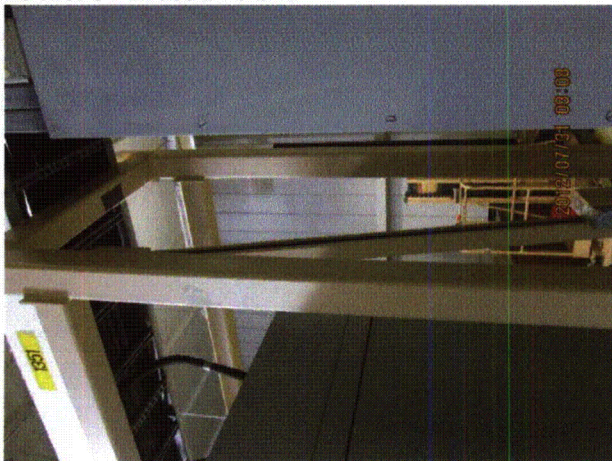
Equipment Description: 125V DC/ Battery Charger #3A



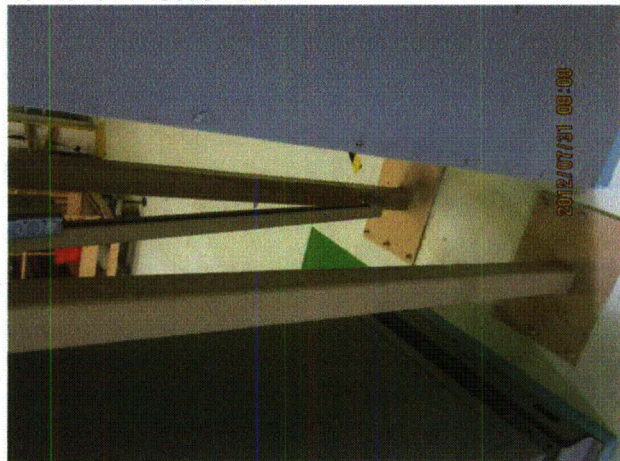
20120731-Dresden-3 013



20120731-Dresden-3 014



20120731-Dresden-3 015



20120731-Dresden-3 016

Status: ☒ Y ☐ N ☐ U

**Seismic Walkdown Checklist (SWC)**

Equipment ID No.: D03-8300--3--B05

Equipment Class: (16) Battery Chargers and Inverters

Equipment Description: 125V DC/ Battery Charger #3

Project: Dresden 3 SWEL

Location (Bldg, Elev, Room/Area): Turbine, 538.00 ft, ALL

Manufacturer/Model: \_\_\_\_\_

**Instructions for Completing Checklist**

This checklist may be used to document the results of the Seismic Walkdown of an item of equipment on the SWEL. The space below each of the following questions may be used to record the results of judgments and findings. Additional space is provided at the end of this checklist for documenting other comments.

**Anchorage**

1. Is anchorage configuration verification required (i.e., is the item one of the 50% of SWEL items requiring such verification)? No
2. Is the anchorage free of bent, broken, missing or loose hardware? Yes
3. Is the anchorage free of corrosion that is more than mild surface oxidation? Yes
4. Is the anchorage free of visible cracks in the concrete near the anchors? Yes  
*Minor shrinkage cracks in floor judged to be acceptable.*
5. Is the anchorage configuration consistent with plant documentation? (Note: This question only applies if the item is one of the 50% for which an anchorage configuration verification is required.) Not Applicable
6. Based on the above anchorage evaluations, is the anchorage free of potentially adverse seismic conditions? Yes

Status: ☒ Y ☐ N ☐ U

**Seismic Walkdown Checklist (SWC)**

Equipment ID No.: D03-8300--3---B05

Equipment Class: (16) Battery Chargers and Inverters

Equipment Description: 125V DC/ Battery Charger #3

**Interaction Effects**

- |   |     |
|---|-----|
| 7. Are soft targets free from impact by nearby equipment or structures?   | Yes |
| 8. Are overhead equipment, distribution systems, ceiling tiles and lighting, and masonry block walls not likely to collapse onto the equipment? | Yes |
| 9. Do attached lines have adequate flexibility to avoid damage?   | Yes |
| 10. Based on the above seismic interaction evaluations, is equipment free of potentially adverse seismic interaction effects?                   | Yes |

**Other Adverse Conditions**

- |  |     |
|--|-----|
| 11. Have you looked for and found no adverse seismic conditions that could adversely affect the safety functions of the equipment? | Yes |
|--|-----|

**Comments**

Seismic Walkdown Team: J. Griffith & M. Wodarczyk - 7/30/2012

Evaluated by: James D. Griffith James Griffith

Date: 9/30/2012



Michael Wodarczyk

9/30/2012



Status: ☒ Y ☐ N ☐ U

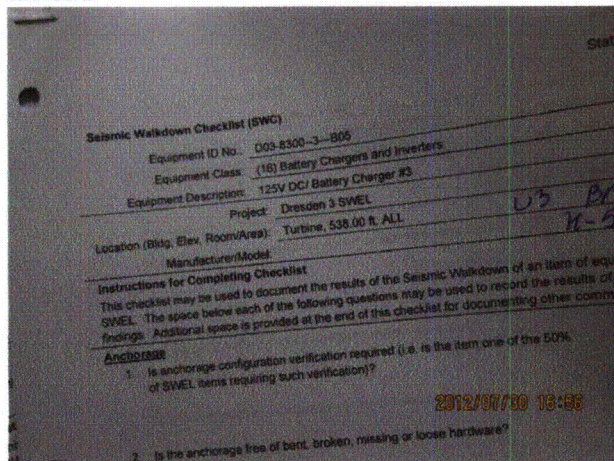
### Seismic Walkdown Checklist (SWC)

Equipment ID No.: D03-8300--3---B05

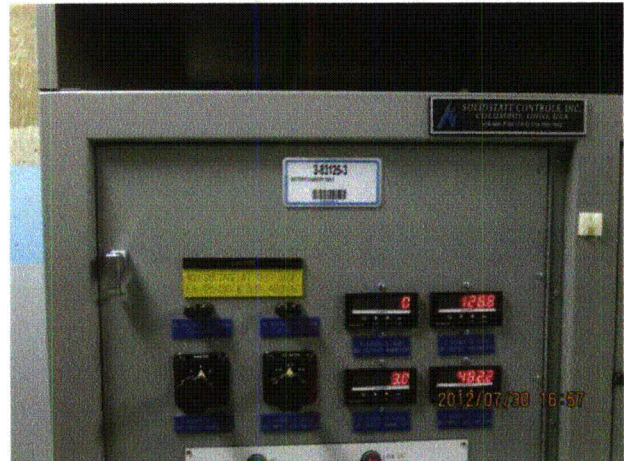
Equipment Class: (16) Battery Chargers and Inverters

Equipment Description: 125V DC/ Battery Charger #3

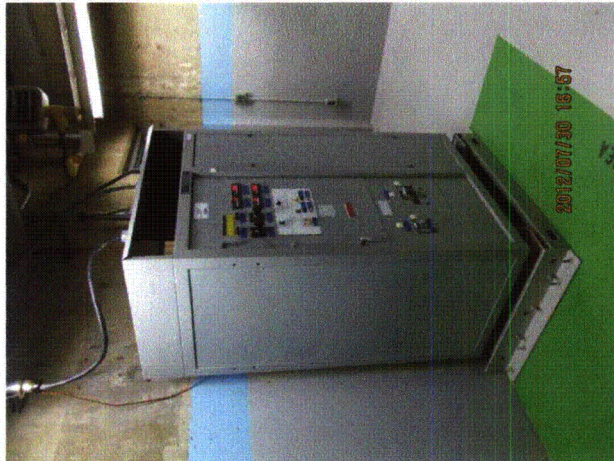
#### Photos



20120730-Dresden-3 179



20120730-Dresden-3 180



20120730-Dresden-3 181



20120730-Dresden-3 182



Status: ☒ Y ☐ N ☐ U

**Seismic Walkdown Checklist (SWC)**

Equipment ID No.: D03-8300--3---B05

Equipment Class: (16) Battery Chargers and Inverters

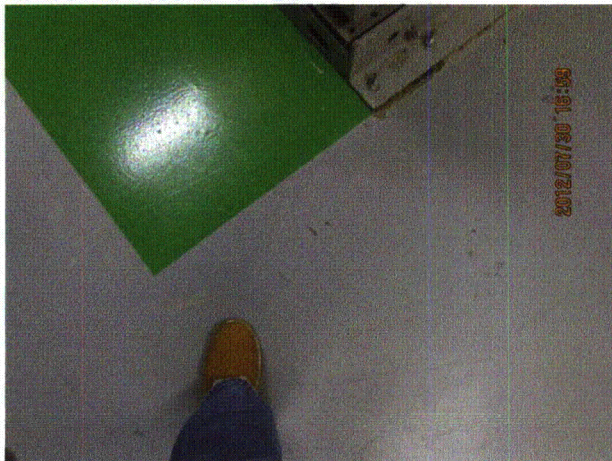
Equipment Description: 125V DC/ Battery Charger #3



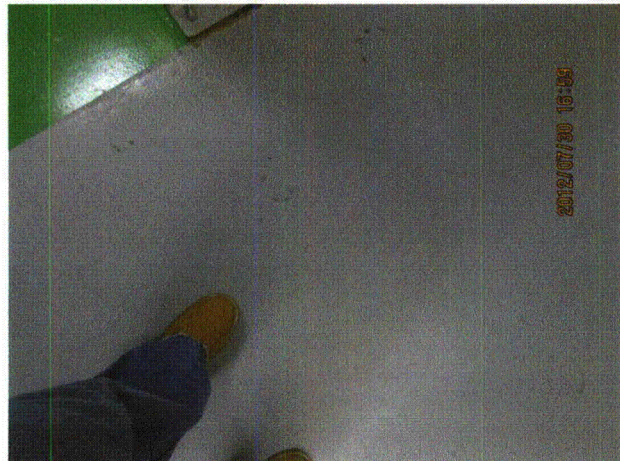
20120730-Dresden-3 183



20120730-Dresden-3 184



20120730-Dresden-3 185



20120730-Dresden-3 186



Status: ☒ Y ☐ N ☐ U

**Seismic Walkdown Checklist (SWC)**

Equipment ID No.: D03-8300--3---B05

Equipment Class: (16) Battery Chargers and Inverters

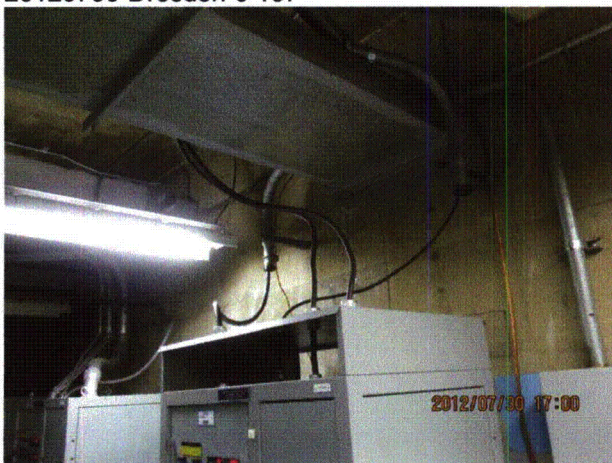
Equipment Description: 125V DC/ Battery Charger #3



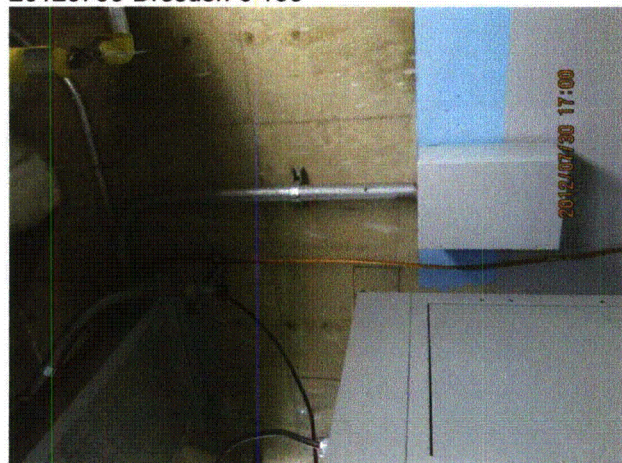
20120730-Dresden-3 187



20120730-Dresden-3 188



20120730-Dresden-3 189



20120730-Dresden-3 190



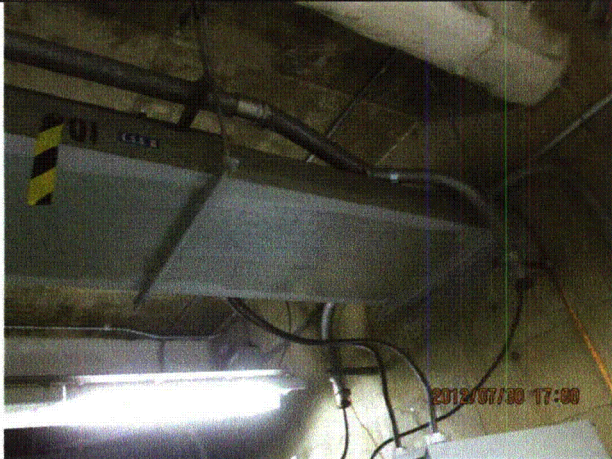
Status: ☒ Y ☐ N ☐ U

**Seismic Walkdown Checklist (SWC)**

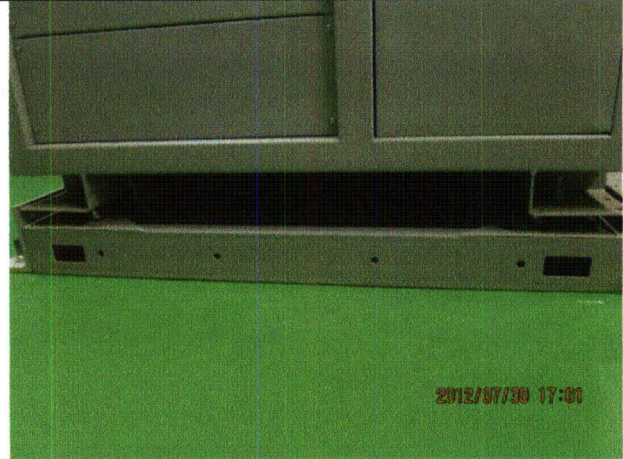
Equipment ID No.: D03-8300--3---B05

Equipment Class: (16) Battery Chargers and Inverters

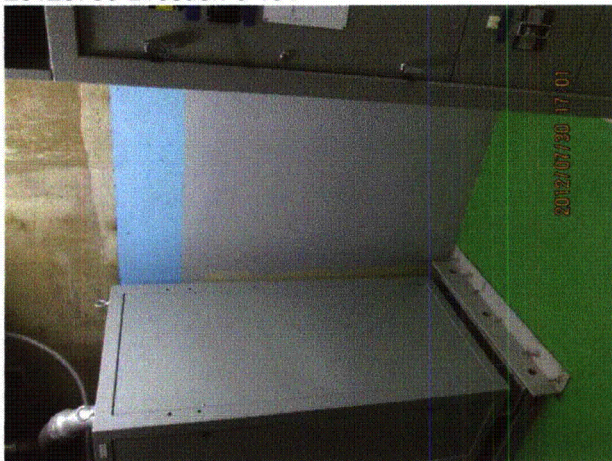
Equipment Description: 125V DC/ Battery Charger #3



20120730-Dresden-3 191



20120730-Dresden-3 192



20120730-Dresden-3 193



20120730-Dresden-3 194

Status: ☒ Y ☐ N ☐ U

**Seismic Walkdown Checklist (SWC)**

Equipment ID No.: D03-8300--BC--B04

Equipment Class: (15) Batteries on Racks

Equipment Description: 125V DC/ Battery #3, Feed to TB Battery Bus #3

Project: Dresden 3 SWEL

Location (Bldg, Elev, Room/Area): Turbine, 551.00 ft, ALL

Manufacturer/Model: \_\_\_\_\_

**Instructions for Completing Checklist**

This checklist may be used to document the results of the Seismic Walkdown of an item of equipment on the SWEL. The space below each of the following questions may be used to record the results of judgments and findings. Additional space is provided at the end of this checklist for documenting other comments.

**Anchorage**

1. Is anchorage configuration verification required (i.e., is the item one of the 50% of SWEL items requiring such verification)? Yes
  
2. Is the anchorage free of bent, broken, missing or loose hardware? Yes
  
3. Is the anchorage free of corrosion that is more than mild surface oxidation? Yes
  
4. Is the anchorage free of visible cracks in the concrete near the anchors? Yes
  
5. Is the anchorage configuration consistent with plant documentation? (Note: This question only applies if the item is one of the 50% for which an anchorage configuration verification is required.) Yes
  
6. Based on the above anchorage evaluations, is the anchorage free of potentially adverse seismic conditions? Yes



Status: ☒ Y ☐ N ☐ U

**Seismic Walkdown Checklist (SWC)**

Equipment ID No.: D03-8300--BC--B04

Equipment Class: (15) Batteries on Racks

Equipment Description: 125V DC/ Battery #3, Feed to TB Battery Bus #3

**Interaction Effects**

7. Are soft targets free from impact by nearby equipment or structures? Yes
8. Are overhead equipment, distribution systems, ceiling tiles and lighting, and masonry block walls not likely to collapse onto the equipment? Yes  
*Overhead light fixtures and trolley hoist and beam judged acceptable.*
9. Do attached lines have adequate flexibility to avoid damage? Yes
10. Based on the above seismic interaction evaluations, is equipment free of potentially adverse seismic interaction effects? Yes

**Other Adverse Conditions**

11. Have you looked for and found no adverse seismic conditions that could adversely affect the safety functions of the equipment? Yes

**Comments**

Seismic Walkdown Team: J. Griffith & M. Wodarczyk - 7/31/2012

Each post leg is through-bolted to an angle iron clip, which is anchored by one 3/8 inch concrete expansion anchor to the concrete floor in accordance with Drawing B-1893, Rev. D.

Evaluated by:

 James Griffith

Date: 9/30/2012



Michael Wodarczyk

9/30/2012

Status: ☒ Y ☐ N ☐ U

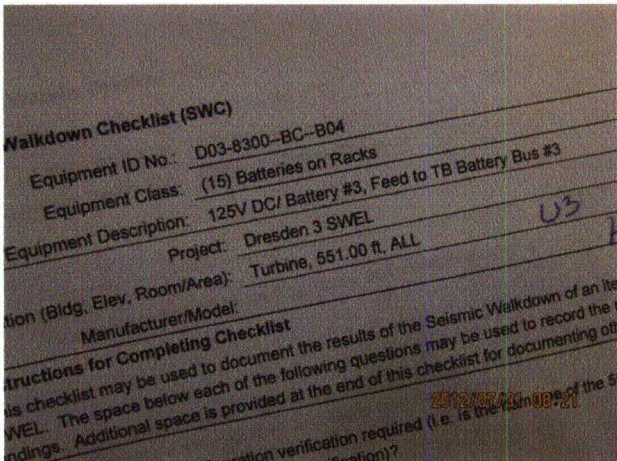
Seismic Walkdown Checklist (SWC)

Equipment ID No.: D03-8300-BC-B04

Equipment Class: (15) Batteries on Racks

Equipment Description: 125V DC/ Battery #3, Feed to TB Battery Bus #3

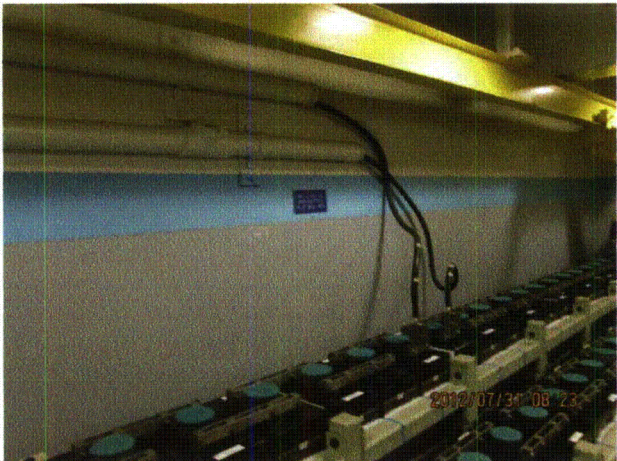
Photos



20120731-Dresden-3 036



20120731-Dresden-3 038



20120731-Dresden-3 037



20120731-Dresden-3 039



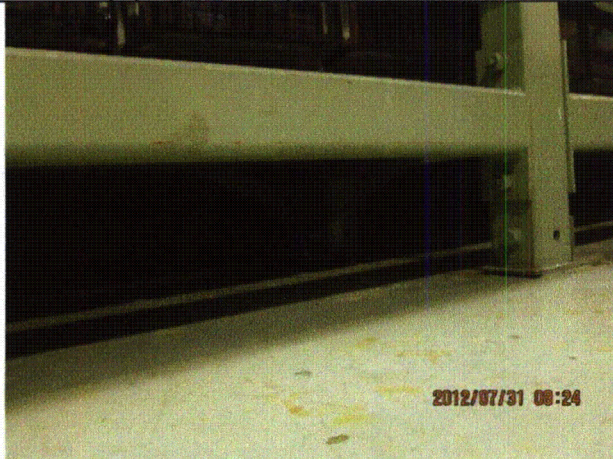
Status: ☒ Y ☐ N ☐ U

**Seismic Walkdown Checklist (SWC)**

Equipment ID No.: D03-8300--BC--B04

Equipment Class: (15) Batteries on Racks

Equipment Description: 125V DC/ Battery #3, Feed to TB Battery Bus #3



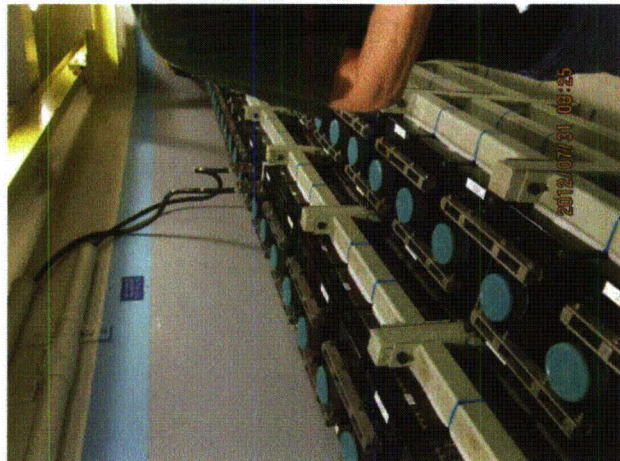
20120731-Dresden-3 040



20120731-Dresden-3 041



20120731-Dresden-3 042



20120731-Dresden-3 043



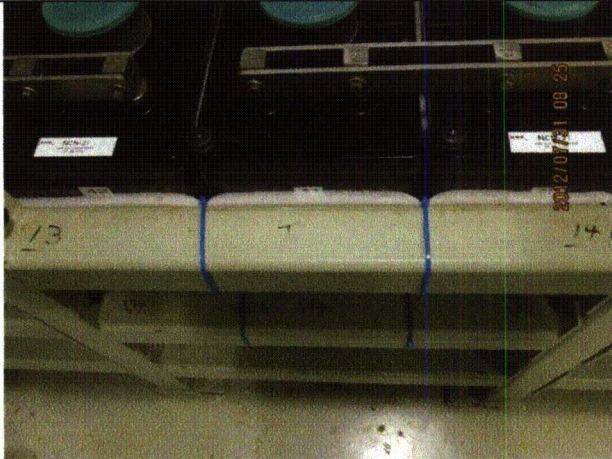
Status: ☒ Y ☐ N ☐ U

**Seismic Walkdown Checklist (SWC)**

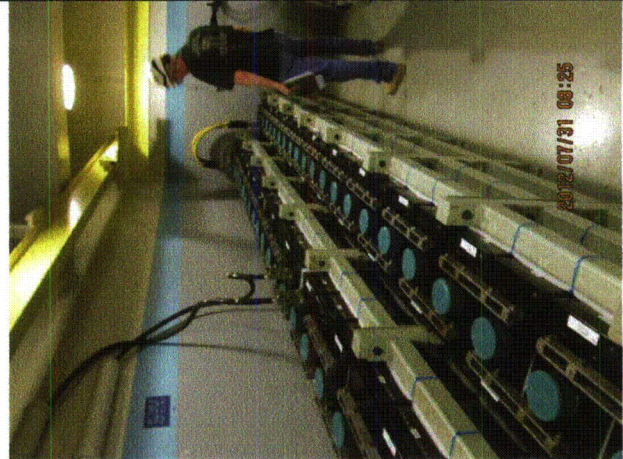
Equipment ID No.: D03-8300--BC--B04

Equipment Class: (15) Batteries on Racks

Equipment Description: 125V DC/ Battery #3, Feed to TB Battery Bus #3



20120731-Dresden-3 044



20120731-Dresden-3 045



20120731-Dresden-3 046



Status: ☒ Y ☐ N ☐ U

**Seismic Walkdown Checklist (SWC)**

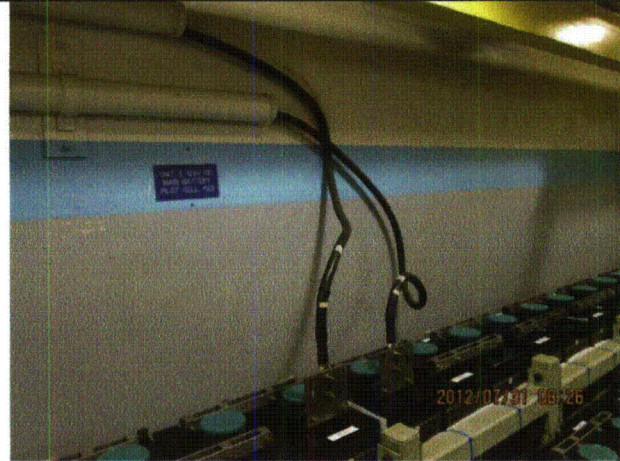
Equipment ID No.: D03-8300--BC--B04

Equipment Class: (15) Batteries on Racks

Equipment Description: 125V DC/ Battery #3, Feed to TB Battery Bus #3



20120731-Dresden-3 048



20120731-Dresden-3 049



20120731-Dresden-3 050



20120731-Dresden-3 051

Status: ☒ Y ☐ N ☐ U

**Seismic Walkdown Checklist (SWC)**

Equipment ID No.: D03-8300--BC--B04

Equipment Class: (15) Batteries on Racks

Equipment Description: 125V DC/ Battery #3, Feed to TB Battery Bus #3



20120731-Dresden-3 052



Status: ☒ Y ☐ N ☐ U

### Seismic Walkdown Checklist (SWC)

Equipment ID No.: D03-8303A-----M05

Equipment Class: (1) Motor Control Centers

Equipment Description: 250V DC/ MCC Bus #3A (ROB-RB MCC #3)

Project: Dresden 3 SWEL

Location (Bldg, Elev, Room/Area): Reactor, 570.00 ft, ALL

Manufacturer/Model: \_\_\_\_\_

#### Instructions for Completing Checklist

This checklist may be used to document the results of the Seismic Walkdown of an item of equipment on the SWEL. The space below each of the following questions may be used to record the results of judgments and findings. Additional space is provided at the end of this checklist for documenting other comments.

#### Anchorage

1. Is anchorage configuration verification required (i.e., is the item one of the 50% of SWEL items requiring such verification)? Yes
  
2. Is the anchorage free of bent, broken, missing or loose hardware? Yes
  
3. Is the anchorage free of corrosion that is more than mild surface oxidation? Yes
  
4. Is the anchorage free of visible cracks in the concrete near the anchors? Yes
  
5. Is the anchorage configuration consistent with plant documentation? (Note: This question only applies if the item is one of the 50% for which an anchorage configuration verification is required.) Yes
  
6. Based on the above anchorage evaluations, is the anchorage free of potentially adverse seismic conditions? Yes

Status: ☒ Y ☐ N ☐ U

**Seismic Walkdown Checklist (SWC)**

Equipment ID No.: D03-8303A-----M05

Equipment Class: (1) Motor Control Centers

Equipment Description: 250V DC/ MCC Bus #3A (ROB-RB MCC #3)

**Interaction Effects**

7. Are soft targets free from impact by nearby equipment or structures? Yes

*Western-most door on back of MCC has a minor misalignment at the hinge.  
Door is adequately latched and judged to be acceptable.*

8. Are overhead equipment, distribution systems, ceiling tiles and lighting, and masonry block walls not likely to collapse onto the equipment? Yes

9. Do attached lines have adequate flexibility to avoid damage? Yes

10. Based on the above seismic interaction evaluations, is equipment free of potentially adverse seismic interaction effects? Yes

**Other Adverse Conditions**

11. Have you looked for and found no adverse seismic conditions that could adversely affect the safety functions of the equipment? Yes

**Comments**

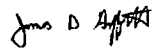
SEWS Anchorage Notes:

MCC stitch welded to edge angle embedded in concrete.

\*\*\*\*\*

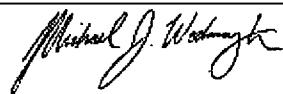
Seismic Walkdown Team: J. Griffith & M. Wodarczyk - 8/2/2012

Evaluated by:



James Griffith

Date: 10/24/2012



Michael Wodarczyk

10/24/2012



Status: ☒ Y ☐ N ☐ U

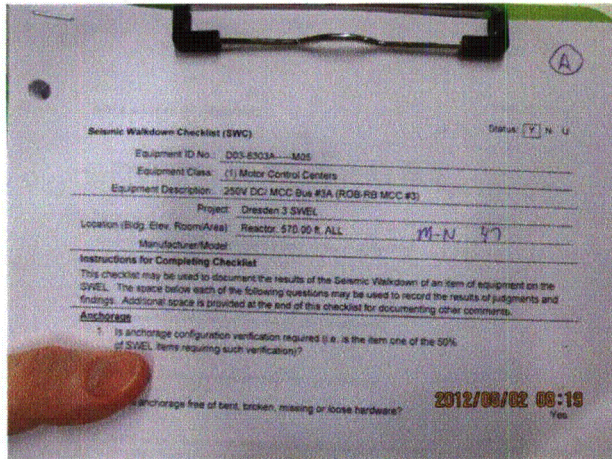
### Seismic Walkdown Checklist (SWC)

Equipment ID No.: D03-8303A-----M05

Equipment Class: (1) Motor Control Centers

Equipment Description: 250V DC/ MCC Bus #3A (ROB-RB MCC #3)

#### Photos



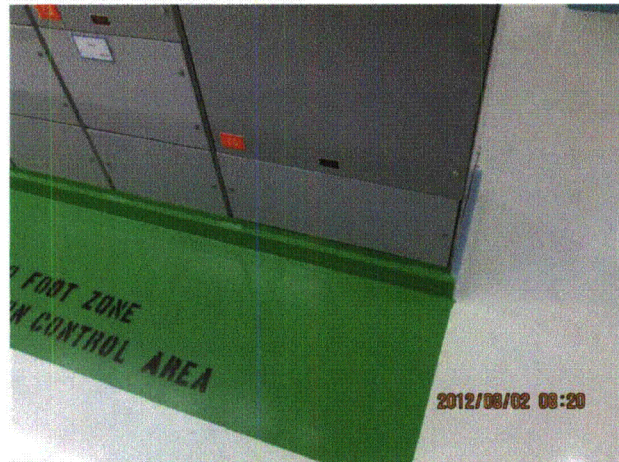
20120802-Dresden-3 001



20120802-Dresden-3 002



20120802-Dresden-3 003



20120802-Dresden-3 004



Status: ☒ Y ☐ N ☐ U

**Seismic Walkdown Checklist (SWC)**

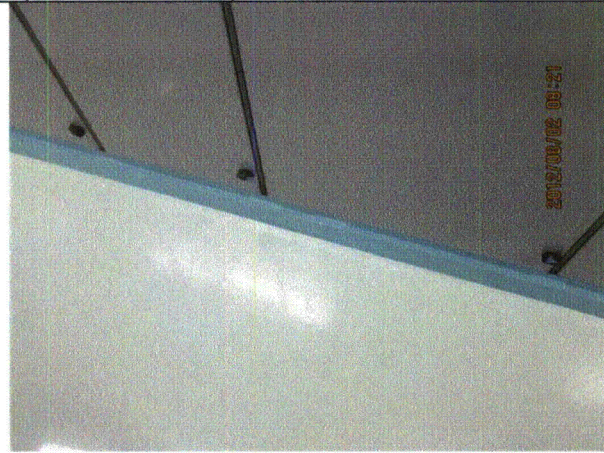
Equipment ID No.: D03-8303A----M05

Equipment Class: (1) Motor Control Centers

Equipment Description: 250V DC/ MCC Bus #3A (ROB-RB MCC #3)



20120802-Dresden-3 005



20120802-Dresden-3 006



20120802-Dresden-3 008



20120802-Dresden-3 009



20120802-Dresden-3 010



20120802-Dresden-3 011



Status: ☒ Y ☐ N ☐ U

**Seismic Walkdown Checklist (SWC)**

Equipment ID No.: D03-8303A-----M05

Equipment Class: (1) Motor Control Centers

Equipment Description: 250V DC/ MCC Bus #3A (ROB-RB MCC #3)



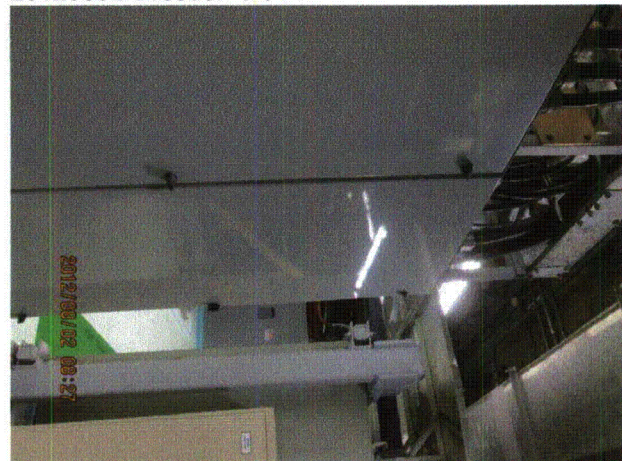
20120802-Dresden-3 012



20120802-Dresden-3 014



20120802-Dresden-3 015



20120802-Dresden-3 016

Status: ☒ Y ☐ N ☐ U

**Seismic Walkdown Checklist (SWC)**

Equipment ID No.: D03-8303B-----M05

Equipment Class: (1) Motor Control Centers

Equipment Description: 250V DC/ MCC Bus #3B (ROB-RB MCC #3)

Project: Dresden 3 SWEL

Location (Bldg, Elev, Room/Area): Reactor, 570.00 ft, ALL

Manufacturer/Model: \_\_\_\_\_

**Instructions for Completing Checklist**

This checklist may be used to document the results of the Seismic Walkdown of an item of equipment on the SWEL. The space below each of the following questions may be used to record the results of judgments and findings. Additional space is provided at the end of this checklist for documenting other comments.

**Anchorage**

1. Is anchorage configuration verification required (i.e., is the item one of the 50% of SWEL items requiring such verification)? Yes
  
2. Is the anchorage free of bent, broken, missing or loose hardware? Yes
  
3. Is the anchorage free of corrosion that is more than mild surface oxidation? Yes
  
4. Is the anchorage free of visible cracks in the concrete near the anchors? Yes
  
5. Is the anchorage configuration consistent with plant documentation? (Note: This question only applies if the item is one of the 50% for which an anchorage configuration verification is required.) Yes
  
6. Based on the above anchorage evaluations, is the anchorage free of potentially adverse seismic conditions? Yes



Status: ☒ Y ☐ N ☐ U

**Seismic Walkdown Checklist (SWC)**

Equipment ID No.: D03-8303B-----M05

Equipment Class: (1) Motor Control Centers

Equipment Description: 250V DC/ MCC Bus #3B (ROB-RB MCC #3)

**Interaction Effects**

- |   |     |
|---|-----|
| 7. Are soft targets free from impact by nearby equipment or structures?   | Yes |
| 8. Are overhead equipment, distribution systems, ceiling tiles and lighting, and masonry block walls not likely to collapse onto the equipment? | Yes |
| 9. Do attached lines have adequate flexibility to avoid damage?   | Yes |
| 10. Based on the above seismic interaction evaluations, is equipment free of potentially adverse seismic interaction effects?                   | Yes |

**Other Adverse Conditions**

- |  |     |
|--|-----|
| 11. Have you looked for and found no adverse seismic conditions that could adversely affect the safety functions of the equipment? | Yes |
|--|-----|

**Comments**

SEWS Anchorage Notes:

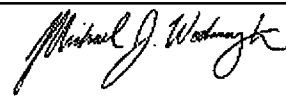
MCC stitch welded to edge angle embedded in concrete.

\*\*\*\*\*

Seismic Walkdown Team: J. Griffith & M. Wodarczyk - 8/2/2012

Evaluated by:  James Griffith

Date: 9/30/2012



Michael Wodarczyk

9/30/2012

Status: ☒ Y ☐ N ☐ U

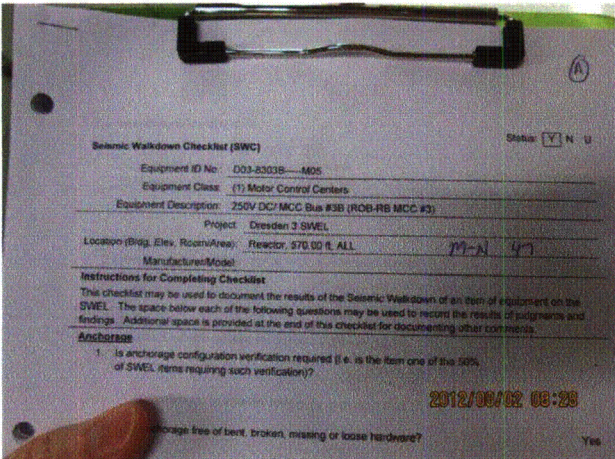
Seismic Walkdown Checklist (SWC)

Equipment ID No.: D03-8303B-----M05

Equipment Class: (1) Motor Control Centers

Equipment Description: 250V DC/ MCC Bus #3B (ROB-RB MCC #3)

Photos



20120802-Dresden-3 017



20120802-Dresden-3 018



20120802-Dresden-3 019



20120802-Dresden-3 020



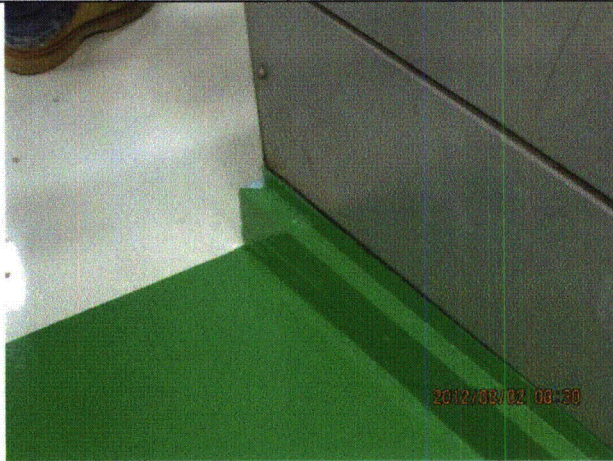
Status: ☒ Y ☐ N ☐ U

**Seismic Walkdown Checklist (SWC)**

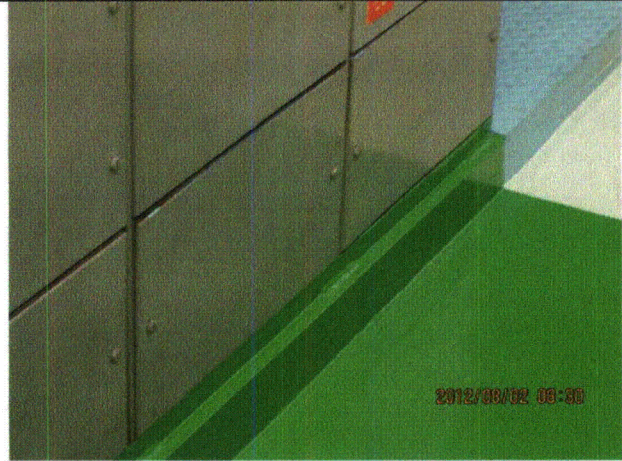
Equipment ID No.: D03-8303B----M05

Equipment Class: (1) Motor Control Centers

Equipment Description: 250V DC/ MCC Bus #3B (ROB-RB MCC #3)



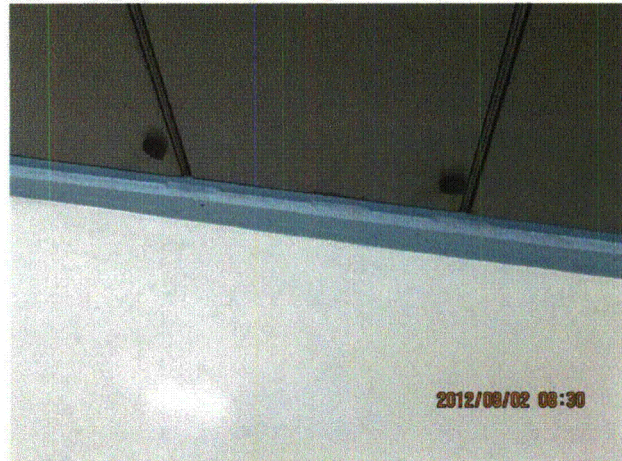
20120802-Dresden-3 021



20120802-Dresden-3 022



20120802-Dresden-3 023



20120802-Dresden-3 024



Status: ☒ Y ☐ N ☐ U

**Seismic Walkdown Checklist (SWC)**

Equipment ID No.: D03-8303B-----M05

Equipment Class: (1) Motor Control Centers

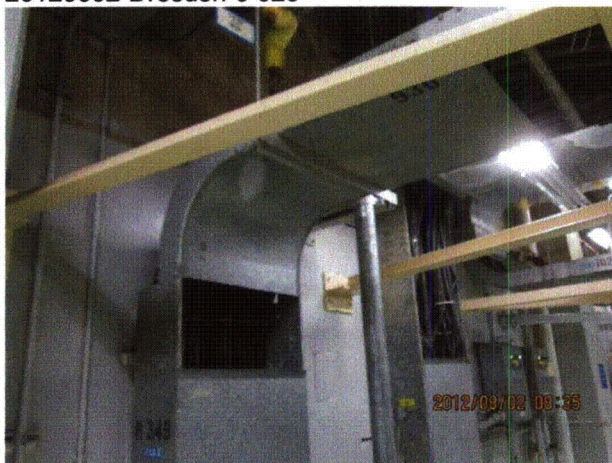
Equipment Description: 250V DC/ MCC Bus #3B (ROB-RB MCC #3)



20120802-Dresden-3 025



20120802-Dresden-3 026



20120802-Dresden-3 027



20120802-Dresden-3 028