

Status: ☒ Y ☐ N ☐ U

**Seismic Walkdown Checklist (SWC)**

Equipment ID No.: D03-2301-0003-V20

Equipment Class: (8) Motor-Operated and Solenoid-Operated Valves

Equipment Description: HPCI/ Turbine Steam Line Valve

Project: Dresden 3 SWEL

Location (Bldg, Elev, Room/Area): Reactor, 476.50 ft, ALL

Manufacturer/Model: \_\_\_\_\_

**Instructions for Completing Checklist**

This checklist may be used to document the results of the Seismic Walkdown of an item of equipment on the SWEL. The space below each of the following questions may be used to record the results of judgments and findings. Additional space is provided at the end of this checklist for documenting other comments.

**Anchorage**

- |  |                |
|--|----------------|
| 1. Is anchorage configuration verification required (i.e., is the item one of the 50% of SWEL items requiring such verification)?  | No             |
| 2. Is the anchorage free of bent, broken, missing or loose hardware?   | Not Applicable |
| 3. Is the anchorage free of corrosion that is more than mild surface oxidation?  | Not Applicable |
| 4. Is the anchorage free of visible cracks in the concrete near the anchors?   | Not Applicable |
| 5. Is the anchorage configuration consistent with plant documentation? (Note: This question only applies if the item is one of the 50% for which an anchorage configuration verification is required.) | Not Applicable |
| 6. Based on the above anchorage evaluations, is the anchorage free of potentially adverse seismic conditions?  | Yes            |

Status: ☒ Y ☐ N ☐ U

**Seismic Walkdown Checklist (SWC)**

Equipment ID No.: D03-2301-0003-V20

Equipment Class: (8) Motor-Operated and Solenoid-Operated Valves

Equipment Description: HPCI/ Turbine Steam Line Valve

**Interaction Effects**

- |  |     |
|--|-----|
| 7. Are soft targets free from impact by nearby equipment or structures?  | Yes |
| 8. Are overhead equipment, distribution systems, ceiling tiles and lighting, and masonry block walls not likely to collapse onto the equipment?<br><i>Overhead light fixture with an open S-hook. Fixture has hard-wired cord and will not impact soft targets. Judged to be acceptable. See IR 1396017.</i> | Yes |
| 9. Do attached lines have adequate flexibility to avoid damage?  | Yes |
| 10. Based on the above seismic interaction evaluations, is equipment free of potentially adverse seismic interaction effects?  | Yes |


**Other Adverse Conditions**

- |  |     |
|--|-----|
| 11. Have you looked for and found no adverse seismic conditions that could adversely affect the safety functions of the equipment? | Yes |
|--|-----|

**Comments**

Seismic Walkdown Team: J. Griffith & M. Wodarczyk - 8/1/2012

Evaluated by: James Griffith Date: 9/30/2012



Michael Wodarczyk

9/30/2012

Status: ☒ Y ☐ N ☐ U

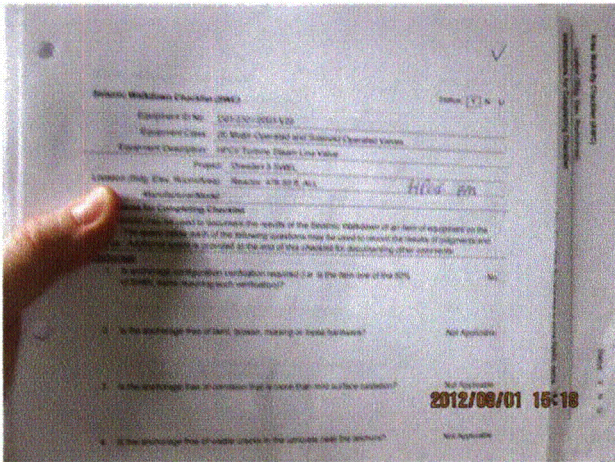
Seismic Walkdown Checklist (SWC)

Equipment ID No.: D03-2301-0003-V20

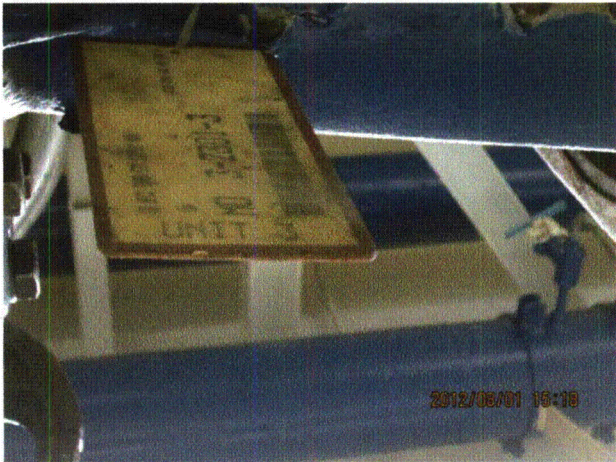
Equipment Class: (8) Motor-Operated and Solenoid-Operated Valves

Equipment Description: HPCI/ Turbine Steam Line Valve

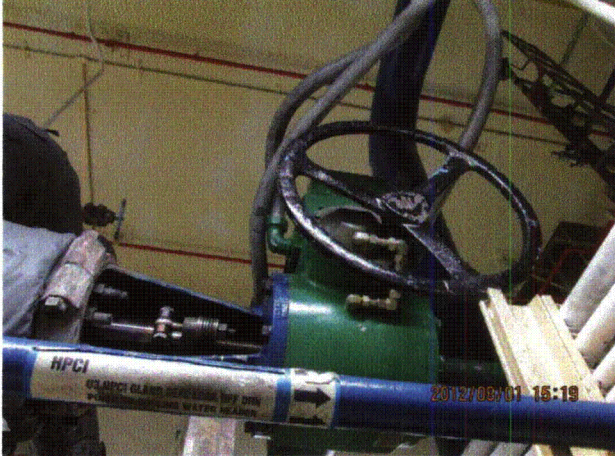
Photos



20120801-Dresden-3 Part 2 (124)



20120801-Dresden-3 Part 2 (125)



20120801-Dresden-3 Part 2 (126)



20120801-Dresden-3 Part 2 (127)

Status: ☒ Y ☐ N ☐ U

**Seismic Walkdown Checklist (SWC)**

Equipment ID No.: D03-2301-0003-V20

Equipment Class: (8) Motor-Operated and Solenoid-Operated Valves

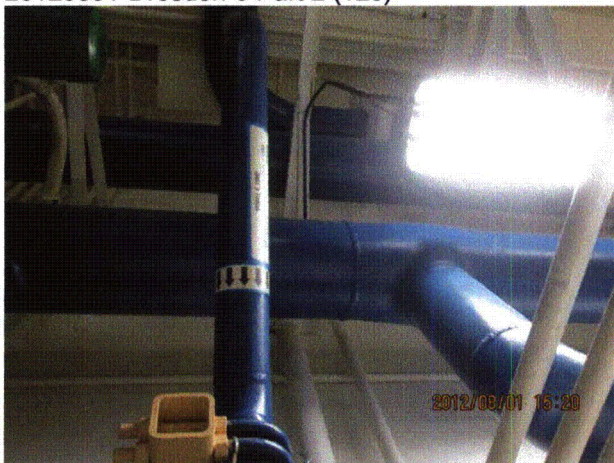
Equipment Description: HPCI/ Turbine Steam Line Valve



20120801-Dresden-3 Part 2 (128)



20120801-Dresden-3 Part 2 (129)



20120801-Dresden-3 Part 2 (130)



20120801-Dresden-3 Part 2 (131)

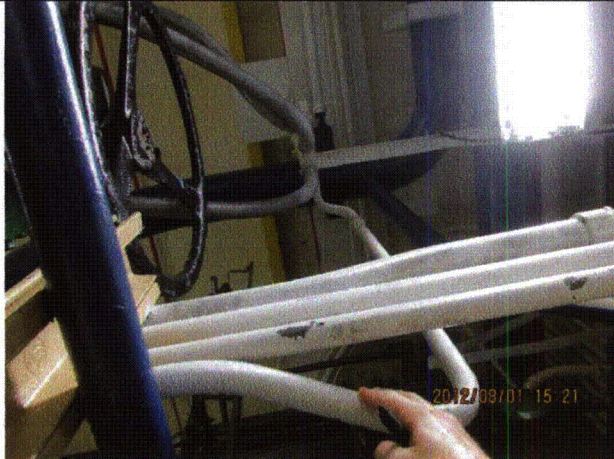
Status: ☒ Y ☐ N ☐ U

**Seismic Walkdown Checklist (SWC)**

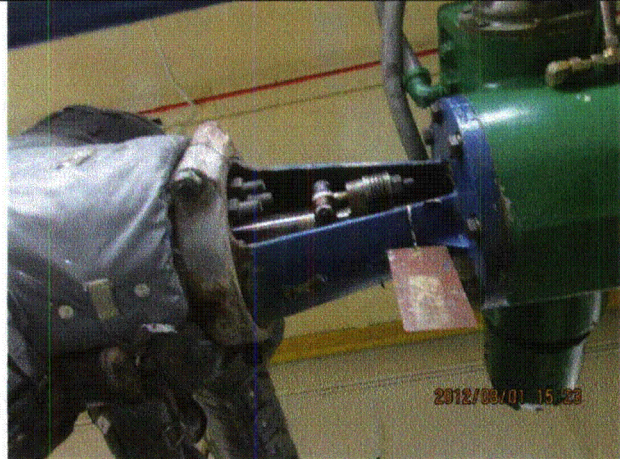
Equipment ID No.: D03-2301-0003-V20

Equipment Class: (8) Motor-Operated and Solenoid-Operated Valves

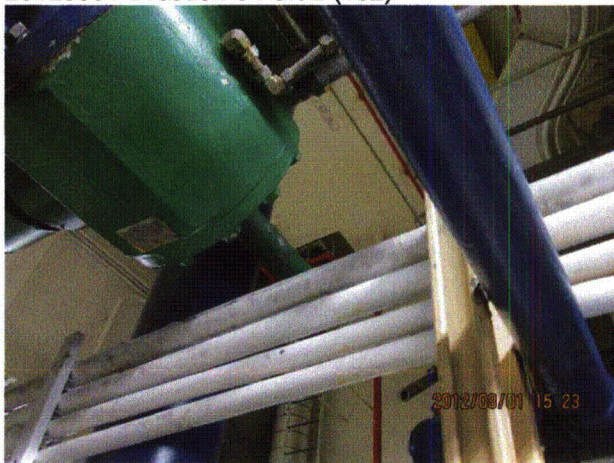
Equipment Description: HPCI/ Turbine Steam Line Valve



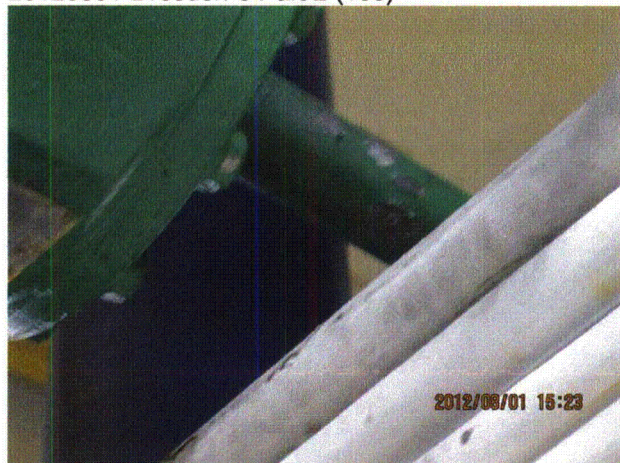
20120801-Dresden-3 Part 2 (132)



20120801-Dresden-3 Part 2 (133)



20120801-Dresden-3 Part 2 (134)



20120801-Dresden-3 Part 2 (135)

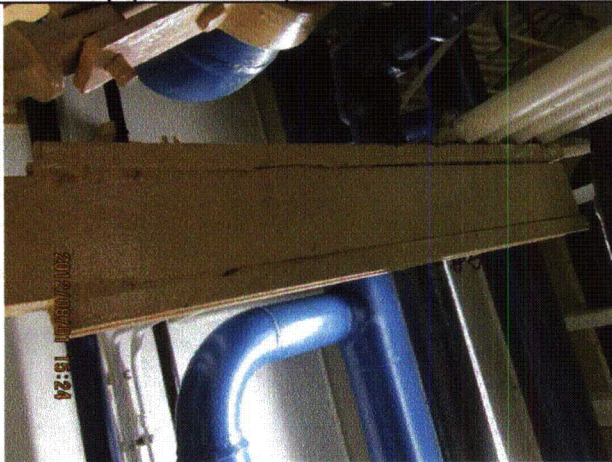
Status: ☒ Y ☐ N ☐ U

**Seismic Walkdown Checklist (SWC)**

Equipment ID No.: D03-2301-0003-V20

Equipment Class: (8) Motor-Operated and Solenoid-Operated Valves

Equipment Description: HPCI/ Turbine Steam Line Valve



20120801-Dresden-3 Part 2 (136)



20120801-Dresden-3 Part 2 (137)



20120801-Dresden-3 Part 2 (138)



20120801-Dresden-3 Part 2 (139)

Status: ☒ Y ☐ N ☐ U

**Seismic Walkdown Checklist (SWC)**

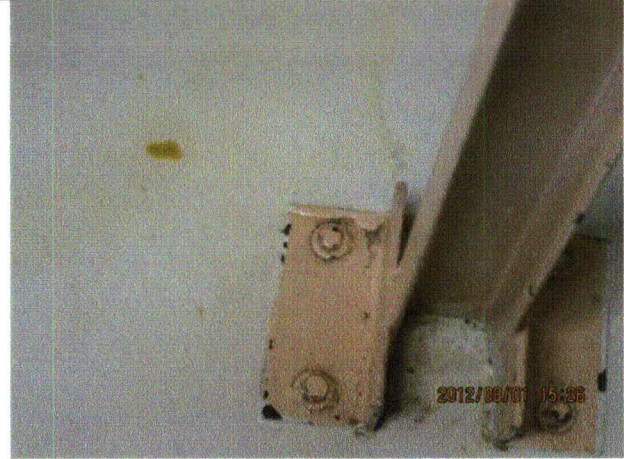
Equipment ID No.: D03-2301-0003-V20

Equipment Class: (8) Motor-Operated and Solenoid-Operated Valves

Equipment Description: HPCI/ Turbine Steam Line Valve



20120801-Dresden-3 Part 2 (140)



20120801-Dresden-3 Part 2 (141)

Status: ☒ Y ☐ N ☐ U

**Seismic Walkdown Checklist (SWC)**

Equipment ID No.: D03-2301-0006-V20

Equipment Class: (8) Motor-Operated and Solenoid-Operated Valves

Equipment Description: HPCI/ Condensate Tank Supply to HPCI Pump Valve

Project: Dresden 3 SWEL

Location (Bldg, Elev, Room/Area): Reactor, 476.50 ft, ALL

Manufacturer/Model: \_\_\_\_\_

**Instructions for Completing Checklist**

This checklist may be used to document the results of the Seismic Walkdown of an item of equipment on the SWEL. The space below each of the following questions may be used to record the results of judgments and findings. Additional space is provided at the end of this checklist for documenting other comments.

**Anchorage**

- |    |   |                |
|----|---|----------------|
| 1. | Is anchorage configuration verification required (i.e., is the item one of the 50% of SWEL items requiring such verification)?  | No             |
| 2. | Is the anchorage free of bent, broken, missing or loose hardware?   | Not Applicable |
| 3. | Is the anchorage free of corrosion that is more than mild surface oxidation?  | Not Applicable |
| 4. | Is the anchorage free of visible cracks in the concrete near the anchors?   | Not Applicable |
| 5. | Is the anchorage configuration consistent with plant documentation? (Note: This question only applies if the item is one of the 50% for which an anchorage configuration verification is required.) | Not Applicable |
| 6. | Based on the above anchorage evaluations, is the anchorage free of potentially adverse seismic conditions?  | Yes            |

Status: ☒ Y ☐ N ☐ U

**Seismic Walkdown Checklist (SWC)**

Equipment ID No.: D03-2301-0006-V20

Equipment Class: (8) Motor-Operated and Solenoid-Operated Valves

Equipment Description: HPCI/ Condensate Tank Supply to HPCI Pump Valve

**Interaction Effects**

- |  |     |
|--|-----|
| 7. Are soft targets free from impact by nearby equipment or structures?  | Yes |
| 8. Are overhead equipment, distribution systems, ceiling tiles and lighting, and masonry block walls not likely to collapse onto the equipment?<br><i>Overhead light fixture with an open S-hook. Fixture has hard-wired cord and will not impact soft targets. Judged to be acceptable. See IR 1396017.</i> | Yes |
| 9. Do attached lines have adequate flexibility to avoid damage?  | Yes |
| 10. Based on the above seismic interaction evaluations, is equipment free of potentially adverse seismic interaction effects?  | Yes |

**Other Adverse Conditions**

- |  |     |
|--|-----|
| 11. Have you looked for and found no adverse seismic conditions that could adversely affect the safety functions of the equipment? | Yes |
|--|-----|

**Comments**

Seismic Walkdown Team: J. Griffith & M. Wodarczyk - 8/1/2012

Evaluated by: James D. Griffith James Griffith Date: 9/30/2012

Michael J. Wodarczyk Michael Wodarczyk 9/30/2012

Status: ☒ Y ☐ N ☐ U

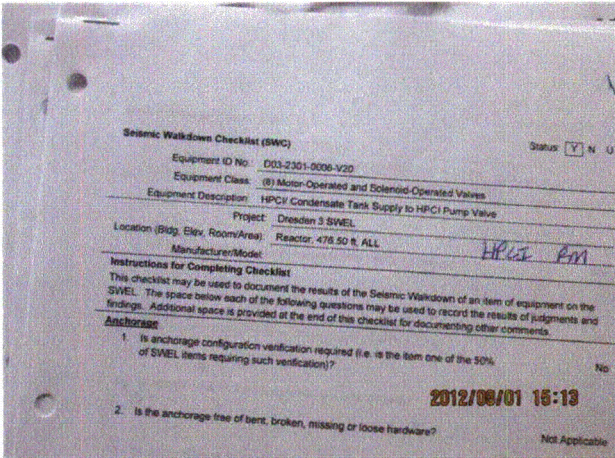
Seismic Walkdown Checklist (SWC)

Equipment ID No.: D03-2301-0006-V20

Equipment Class: (8) Motor-Operated and Solenoid-Operated Valves

Equipment Description: HPCI/ Condensate Tank Supply to HPCI Pump Valve

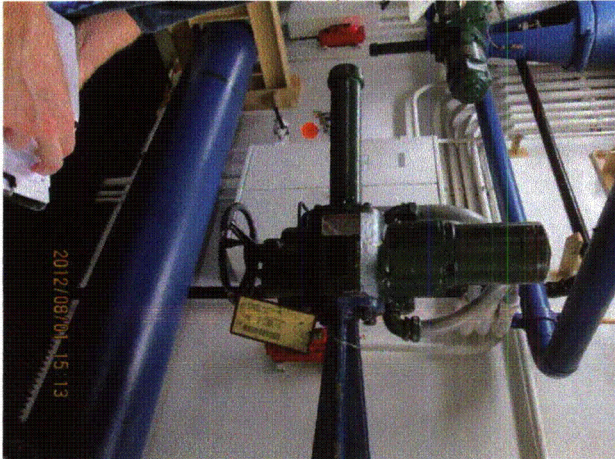
Photos



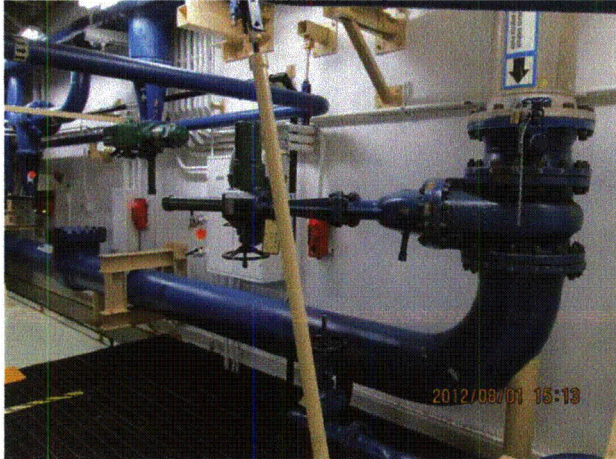
20120801-Dresden-3 Part 2 (106)



20120801-Dresden-3 Part 2 (107)



20120801-Dresden-3 Part 2 (108)



20120801-Dresden-3 Part 2 (109)

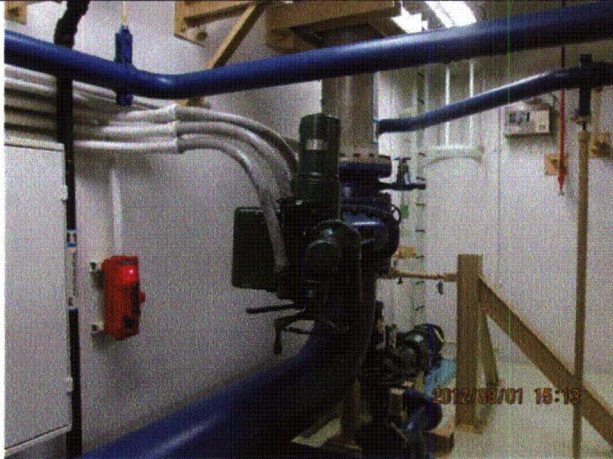
Status: ☒ Y ☐ N ☐ U

**Seismic Walkdown Checklist (SWC)**

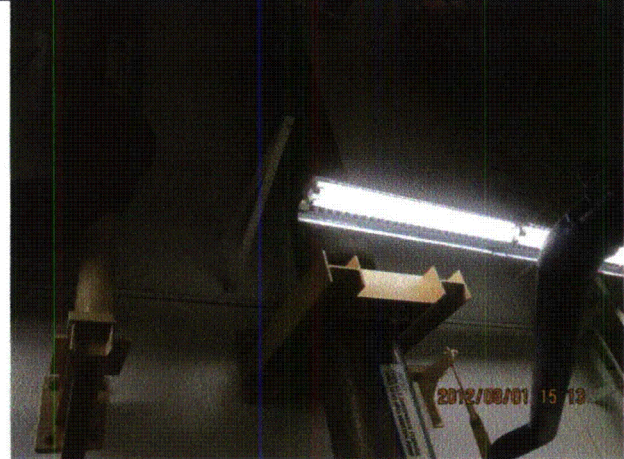
Equipment ID No.: D03-2301-0006-V20

Equipment Class: (8) Motor-Operated and Solenoid-Operated Valves

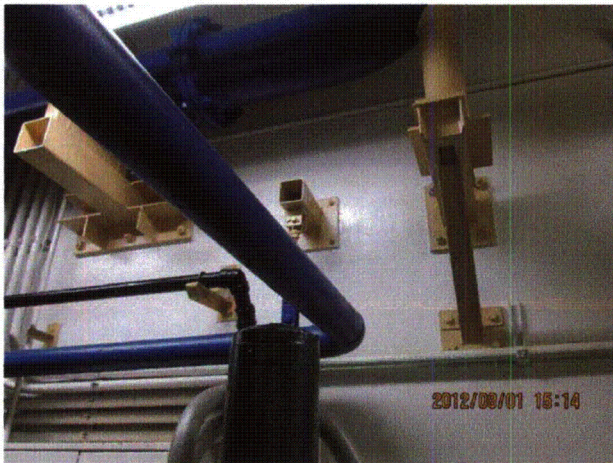
Equipment Description: HPCI/ Condensate Tank Supply to HPCI Pump Valve



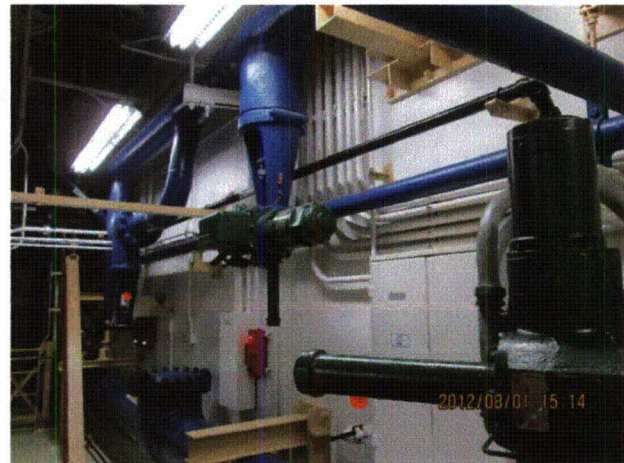
20120801-Dresden-3 Part 2 (110)



20120801-Dresden-3 Part 2 (111)



20120801-Dresden-3 Part 2 (114)



20120801-Dresden-3 Part 2 (115)

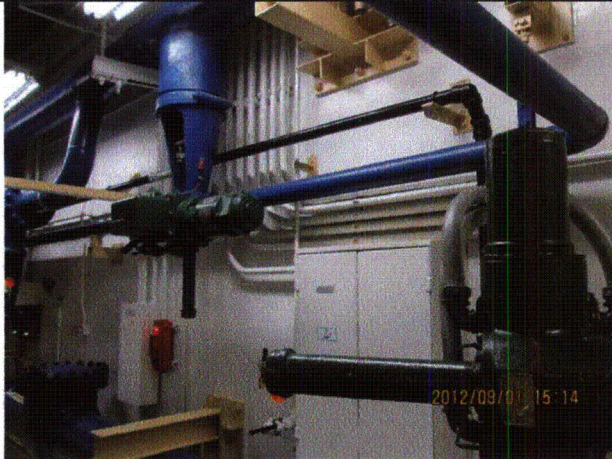
Status: ☒ Y ☐ N ☐ U

**Seismic Walkdown Checklist (SWC)**

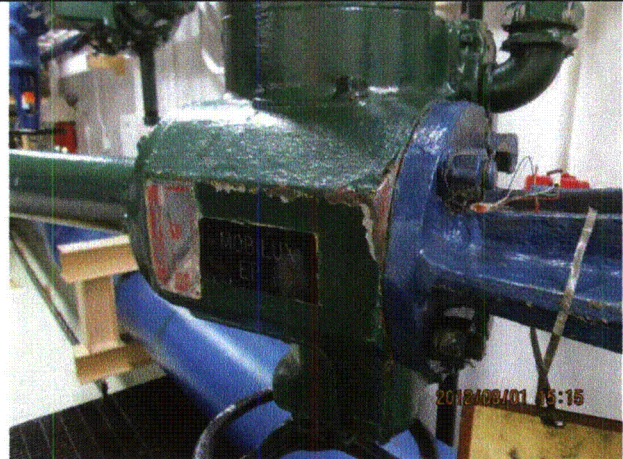
Equipment ID No.: D03-2301-0006-V20

Equipment Class: (8) Motor-Operated and Solenoid-Operated Valves

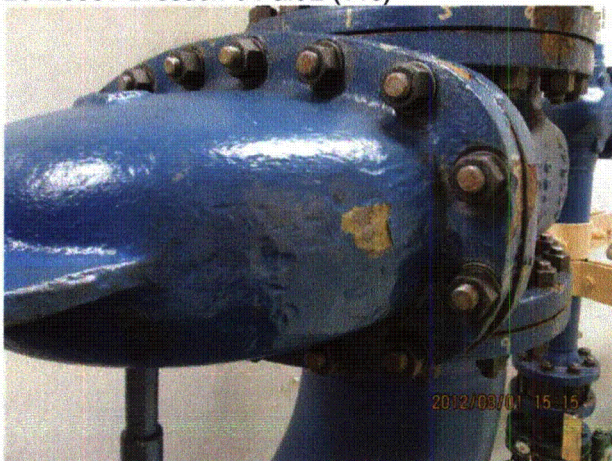
Equipment Description: HPCI/ Condensate Tank Supply to HPCI Pump Valve



20120801-Dresden-3 Part 2 (116)



20120801-Dresden-3 Part 2 (117)



20120801-Dresden-3 Part 2 (118)



20120801-Dresden-3 Part 2 (119)

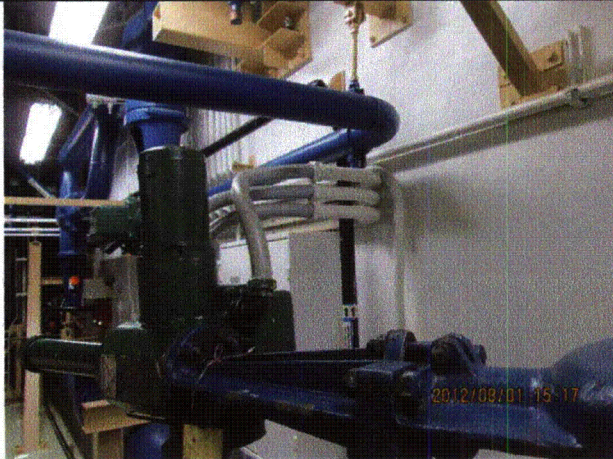
Status: ☒ Y ☐ N ☐ U

**Seismic Walkdown Checklist (SWC)**

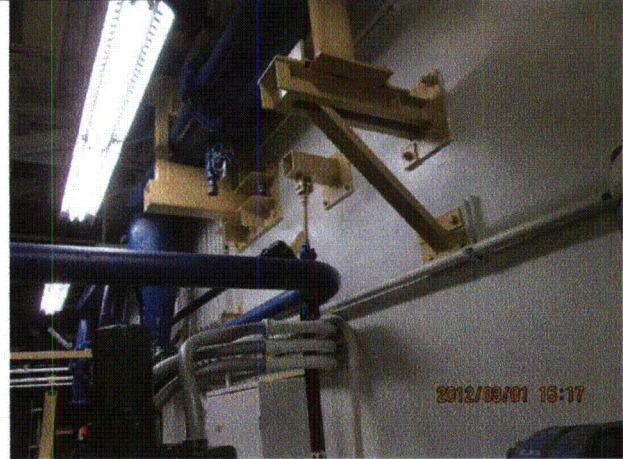
Equipment ID No.: D03-2301-0006-V20

Equipment Class: (8) Motor-Operated and Solenoid-Operated Valves

Equipment Description: HPCI/ Condensate Tank Supply to HPCI Pump Valve



20120801-Dresden-3 Part 2 (120)



20120801-Dresden-3 Part 2 (121)



20120801-Dresden-3 Part 2 (122)



20120801-Dresden-3 Part 2 (123)

Status: ☒ Y ☐ N ☐ U

**Seismic Walkdown Checklist (SWC)**

Equipment ID No.: D03-2301-0035-V20

Equipment Class: (8) Motor-Operated and Solenoid-Operated Valves

Equipment Description: HPCI/ Suppression Pool Suction Line Valve

Project: Dresden 3 SWEL

Location (Bldg, Elev, Room/Area): Reactor, 476.50 ft, ALL

Manufacturer/Model:

**Instructions for Completing Checklist**

This checklist may be used to document the results of the Seismic Walkdown of an item of equipment on the SWEL. The space below each of the following questions may be used to record the results of judgments and findings. Additional space is provided at the end of this checklist for documenting other comments.

**Anchorage**

1. Is anchorage configuration verification required (i.e., is the item one of the 50% of SWEL items requiring such verification)? No
2. Is the anchorage free of bent, broken, missing or loose hardware? Not Applicable
3. Is the anchorage free of corrosion that is more than mild surface oxidation? Not Applicable
4. Is the anchorage free of visible cracks in the concrete near the anchors? Not Applicable
5. Is the anchorage configuration consistent with plant documentation? (Note: This question only applies if the item is one of the 50% for which an anchorage configuration verification is required.) Not Applicable
6. Based on the above anchorage evaluations, is the anchorage free of potentially adverse seismic conditions? Yes

Status: ☒ Y ☐ N ☐ U

**Seismic Walkdown Checklist (SWC)**

Equipment ID No.: D03-2301-0035-V20

Equipment Class: (8) Motor-Operated and Solenoid-Operated Valves

Equipment Description: HPCI/ Suppression Pool Suction Line Valve

**Interaction Effects**

- |   |     |
|---|-----|
| 7. Are soft targets free from impact by nearby equipment or structures?   | Yes |
| 8. Are overhead equipment, distribution systems, ceiling tiles and lighting, and masonry block walls not likely to collapse onto the equipment? | Yes |
| 9. Do attached lines have adequate flexibility to avoid damage?   | Yes |
| 10. Based on the above seismic interaction evaluations, is equipment free of potentially adverse seismic interaction effects?                   | Yes |

**Other Adverse Conditions**

- |  |     |
|--|-----|
| 11. Have you looked for and found no adverse seismic conditions that could adversely affect the safety functions of the equipment? | Yes |
|--|-----|

**Comments**

Seismic Walkdown Team: J. Griffith & M. Wodarczyk - 8/1/2012

Evaluated by: James D. Griffith James Griffith Date: 9/30/2012



Michael Wodarczyk

9/30/2012

Status: ☒ Y ☐ N ☐ U

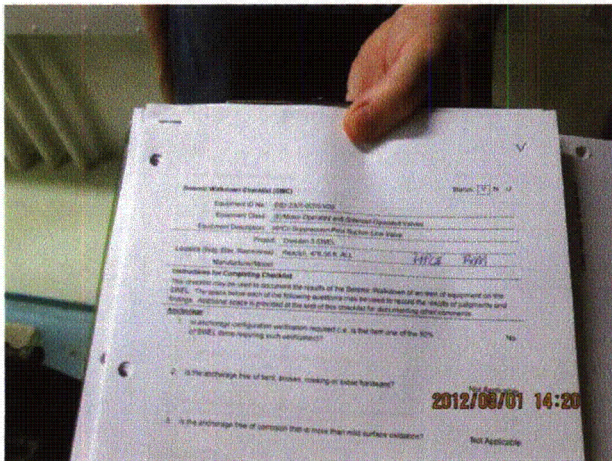
### Seismic Walkdown Checklist (SWC)

Equipment ID No.: D03-2301-0035-V20

Equipment Class: (8) Motor-Operated and Solenoid-Operated Valves

Equipment Description: HPCI/ Suppression Pool Suction Line Valve

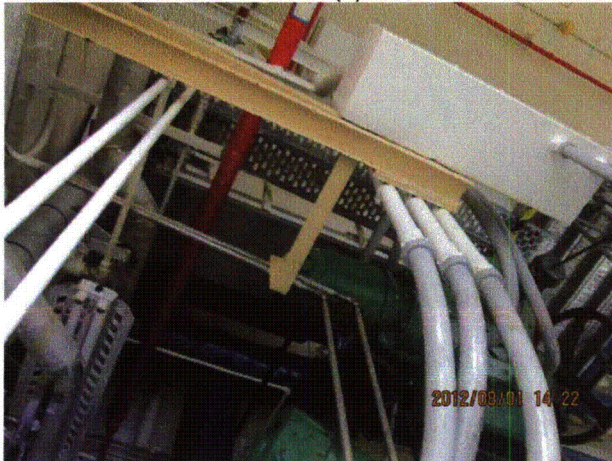
#### Photos



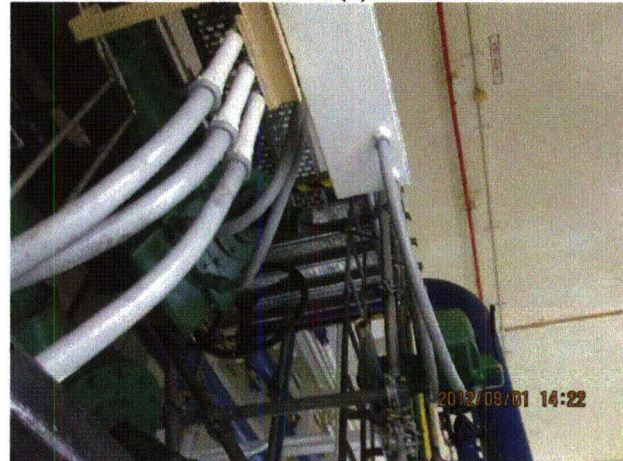
20120801-Dresden-3 Part 2 (0)



20120801-Dresden-3 Part 2 (1)



20120801-Dresden-3 Part 2 (10)



20120801-Dresden-3 Part 2 (11)

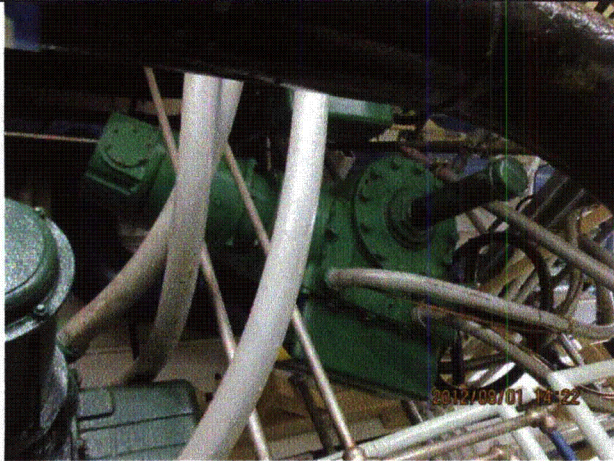
Status: ☒ Y ☐ N ☐ U

**Seismic Walkdown Checklist (SWC)**

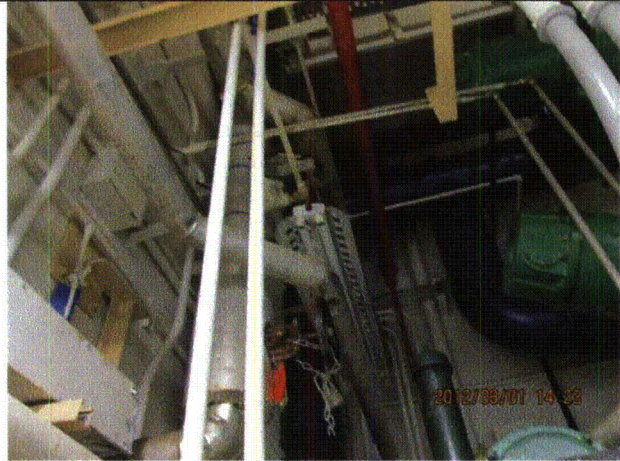
Equipment ID No.: D03-2301-0035-V20

Equipment Class: (8) Motor-Operated and Solenoid-Operated Valves

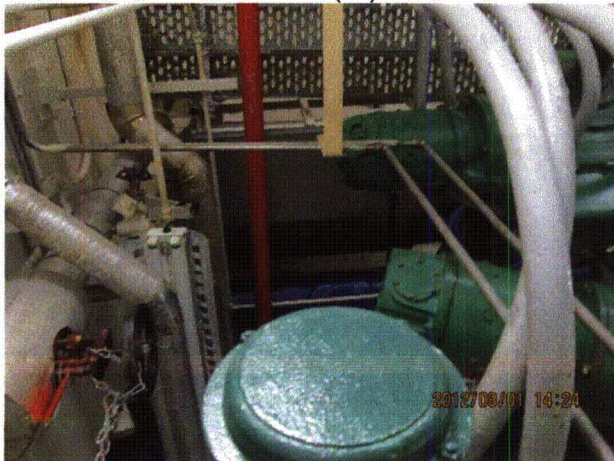
Equipment Description: HPCI/ Suppression Pool Suction Line Valve



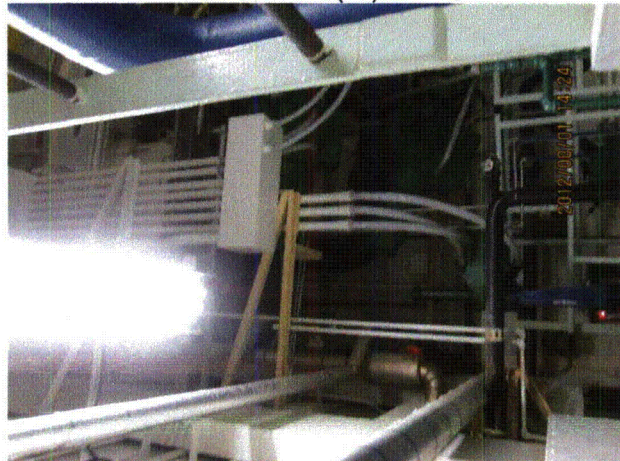
20120801-Dresden-3 Part 2 (12)



20120801-Dresden-3 Part 2 (13)



20120801-Dresden-3 Part 2 (14)



20120801-Dresden-3 Part 2 (15)

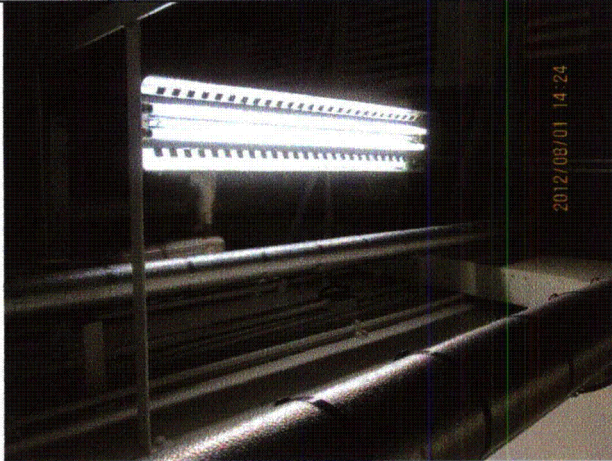
Status: ☒ Y ☐ N ☐ U

**Seismic Walkdown Checklist (SWC)**

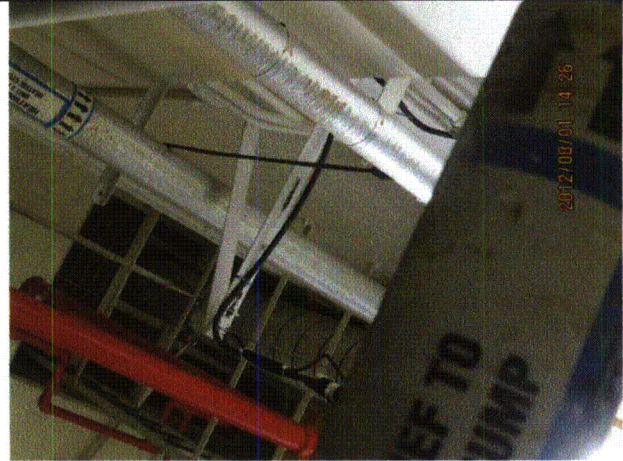
Equipment ID No.: D03-2301-0035-V20

Equipment Class: (8) Motor-Operated and Solenoid-Operated Valves

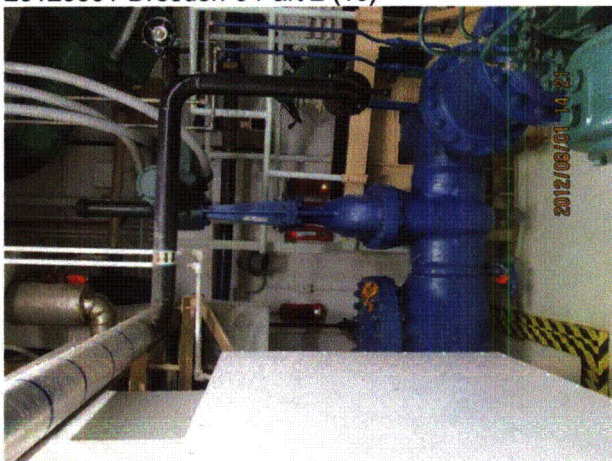
Equipment Description: HPCI/ Suppression Pool Suction Line Valve



20120801-Dresden-3 Part 2 (16)



20120801-Dresden-3 Part 2 (17)



20120801-Dresden-3 Part 2 (2)



20120801-Dresden-3 Part 2 (3)

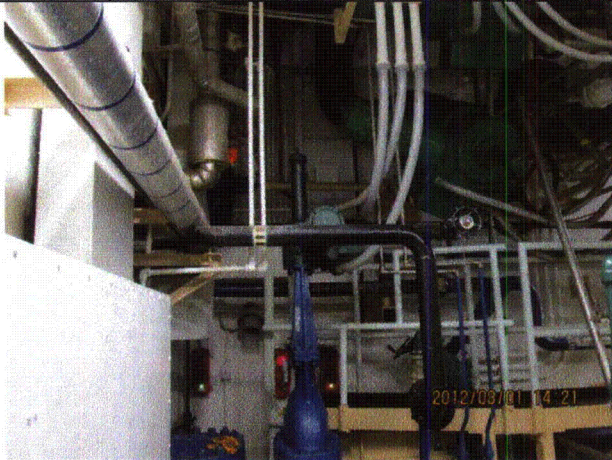
Status: ☒ Y ☐ N ☐ U

**Seismic Walkdown Checklist (SWC)**

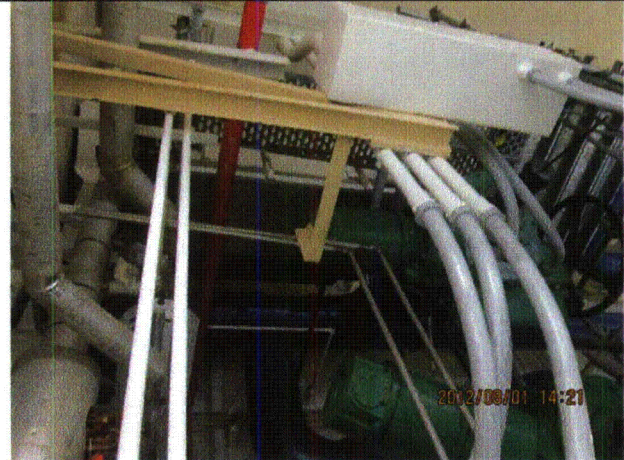
Equipment ID No.: D03-2301-0035-V20

Equipment Class: (8) Motor-Operated and Solenoid-Operated Valves

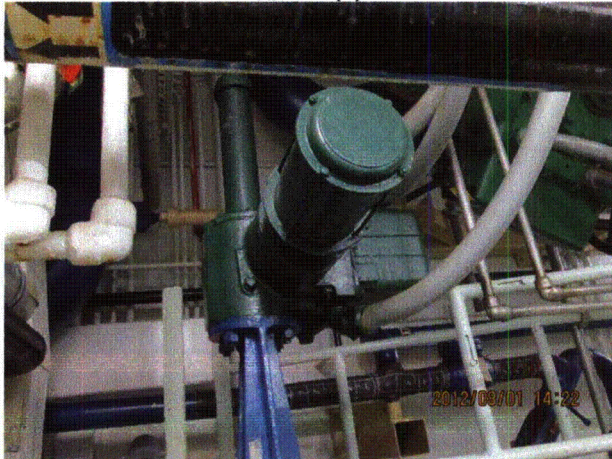
Equipment Description: HPCI/ Suppression Pool Suction Line Valve



20120801-Dresden-3 Part 2 (4)



20120801-Dresden-3 Part 2 (5)



20120801-Dresden-3 Part 2 (6)



20120801-Dresden-3 Part 2 (7)

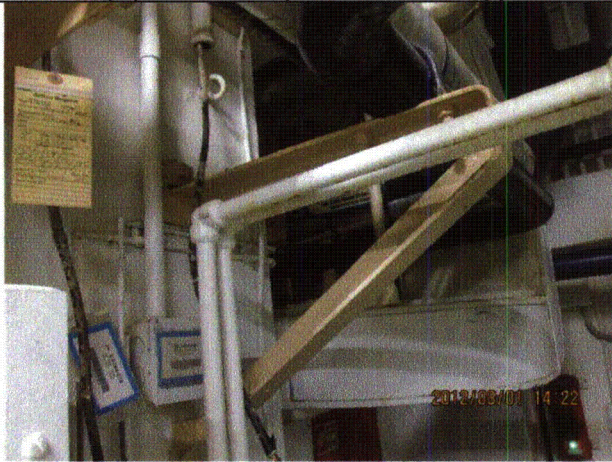
Status: ☒ Y ☐ N ☐ U

**Seismic Walkdown Checklist (SWC)**

Equipment ID No.: D03-2301-0035-V20

Equipment Class: (8) Motor-Operated and Solenoid-Operated Valves

Equipment Description: HPCI/ Suppression Pool Suction Line Valve



20120801-Dresden-3 Part 2 (8)



20120801-Dresden-3 Part 2 (9)

Status: ☒ Y ☐ N ☐ U

**Seismic Walkdown Checklist (SWC)**

Equipment ID No.: D03-2301-0057-P30

Equipment Class: (5) Horizontal Pumps

Equipment Description: HPCI/ HPCI Turbine Cooling Water Pump

Project: Dresden 3 SWEL

Location (Bldg, Elev, Room/Area): Reactor, 476.50 ft, ALL

Manufacturer/Model: \_\_\_\_\_

**Instructions for Completing Checklist**

This checklist may be used to document the results of the Seismic Walkdown of an item of equipment on the SWEL. The space below each of the following questions may be used to record the results of judgments and findings. Additional space is provided at the end of this checklist for documenting other comments.

**Anchorage**

1. Is anchorage configuration verification required (i.e., is the item one of the 50% of SWEL items requiring such verification)? Yes
  
2. Is the anchorage free of bent, broken, missing or loose hardware? Yes
  
3. Is the anchorage free of corrosion that is more than mild surface oxidation? Yes
  
4. Is the anchorage free of visible cracks in the concrete near the anchors? Yes
  
5. Is the anchorage configuration consistent with plant documentation? (Note: This question only applies if the item is one of the 50% for which an anchorage configuration verification is required.) Yes
  
6. Based on the above anchorage evaluations, is the anchorage free of potentially adverse seismic conditions? Yes

Status: ☒ Y ☐ N ☐ U

**Seismic Walkdown Checklist (SWC)**

Equipment ID No.: D03-2301-0057-P30

Equipment Class: (5) Horizontal Pumps

Equipment Description: HPCI/ HPCI Turbine Cooling Water Pump

**Interaction Effects**

- |  |     |
|--|-----|
| 7. Are soft targets free from impact by nearby equipment or structures?  | Yes |
| 8. Are overhead equipment, distribution systems, ceiling tiles and lighting, and masonry block walls not likely to collapse onto the equipment?<br><i>Overhead light fixture with an open S-hook. Fixture has hard-wired cord and will not impact soft targets. Judged to be acceptable. See IR 1396017.</i> | Yes |
| 9. Do attached lines have adequate flexibility to avoid damage?  | Yes |
| 10. Based on the above seismic interaction evaluations, is equipment free of potentially adverse seismic interaction effects?  | Yes |

**Other Adverse Conditions**

- |  |     |
|--|-----|
| 11. Have you looked for and found no adverse seismic conditions that could adversely affect the safety functions of the equipment? | Yes |
|--|-----|

**Comments**

SEWS Anchorage Notes:

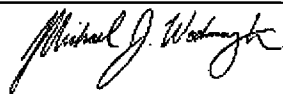
Small horizontal Ingersoll pump. Bolted with three 7/8" diameter cast-in-place bolts per side.

\*\*\*\*\*

Seismic Walkdown Team: J. Griffith & M. Wodarczyk - 8/1/2012

Evaluated by: James Griffith

Date: 9/30/2012



Michael Wodarczyk

9/30/2012

Status: ☒ Y ☐ N ☐ U

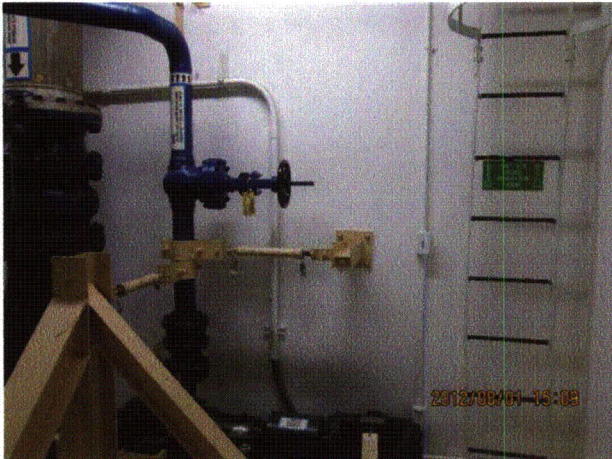
**Seismic Walkdown Checklist (SWC)**

Equipment ID No.: D03-2301-0057-P30

Equipment Class: (5) Horizontal Pumps

Equipment Description: HPCI/ HPCI Turbine Cooling Water Pump

**Photos**



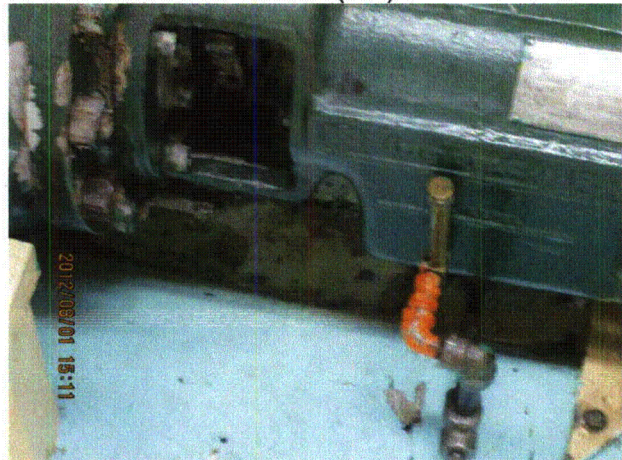
20120801-Dresden-3 Part 2 (100)



20120801-Dresden-3 Part 2 (101)



20120801-Dresden-3 Part 2 (102)



20120801-Dresden-3 Part 2 (103)

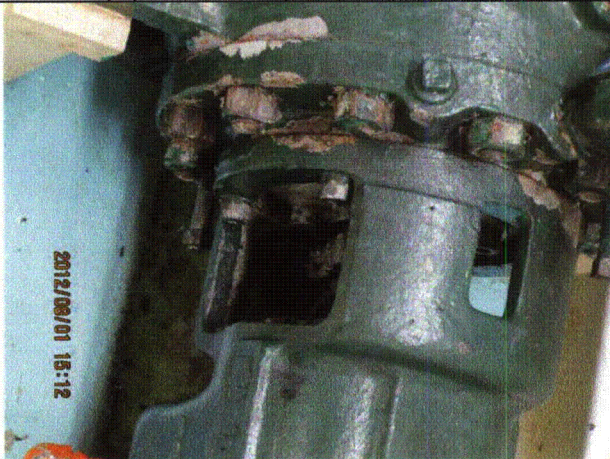
Status: ☒ Y ☐ N ☐ U

### Seismic Walkdown Checklist (SWC)

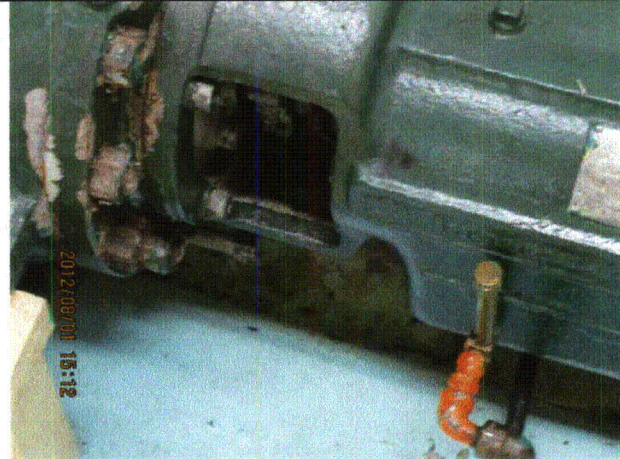
Equipment ID No.: D03-2301-0057-P30

Equipment Class: (5) Horizontal Pumps

Equipment Description: HPCI/ HPCI Turbine Cooling Water Pump



20120801-Dresden-3 Part 2 (104)



20120801-Dresden-3 Part 2 (105)

Seismic Walkdown Checklist (SWC)

Status: ☒ Y ☐ N ☐ U

Equipment ID No.: D03-2301-0057-P30

Equipment Class: (5) Horizontal Pumps

Equipment Description: HPCI/ HPCI Turbine Cooling Water Pump

Project: Dresden 3 SWEL

Location (Bldg, Elev, Room/Area): Reactor 476 50 ft, ALL

Manufacturer/Model: HPCI PM

**Instructions for Completing Checklist**  
This checklist may be used to document the results of the Seismic Walkdown of an item of equipment on the SWEL. The space below each of the following questions may be used to record the results of judgments and findings. Additional space is provided at the end of this checklist for documenting other comments.

**Anchorage**

1. Is anchorage configuration verification required (i.e. is the item one of the 50% of SWEL items requiring such verification)?

2. Is the anchorage free of bent, broken, missing or loose hardware?

2012/08/01 15:06

20120801-Dresden-3 Part 2 (87)



20120801-Dresden-3 Part 2 (88)

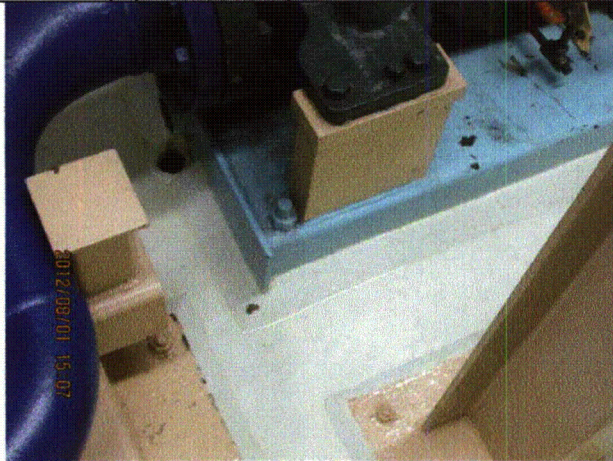
Status: ☒ Y ☐ N ☐ U

**Seismic Walkdown Checklist (SWC)**

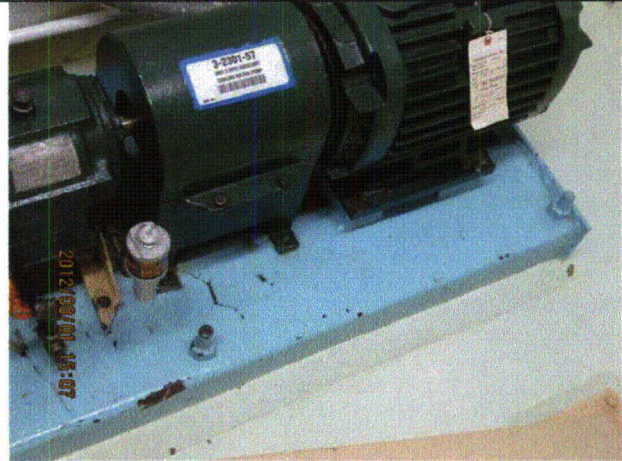
Equipment ID No.: D03-2301-0057-P30

Equipment Class: (5) Horizontal Pumps

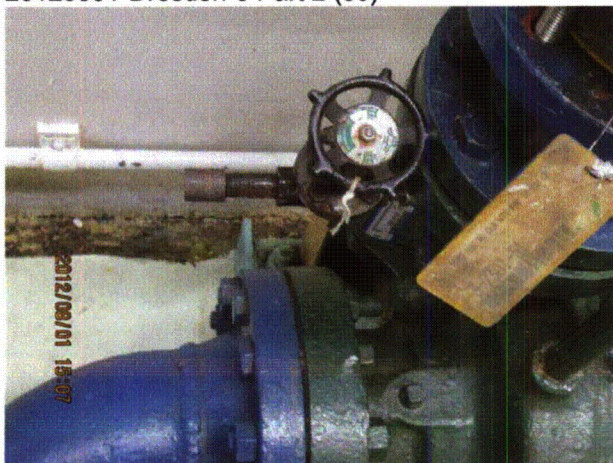
Equipment Description: HPCI/ HPCI Turbine Cooling Water Pump



20120801-Dresden-3 Part 2 (89)



20120801-Dresden-3 Part 2 (90)



20120801-Dresden-3 Part 2 (91)



20120801-Dresden-3 Part 2 (92)

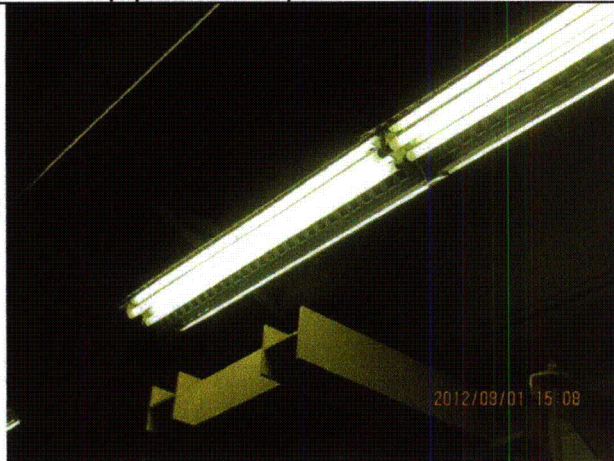
Status: ☒ Y ☐ N ☐ U

**Seismic Walkdown Checklist (SWC)**

Equipment ID No.: D03-2301-0057-P30

Equipment Class: (5) Horizontal Pumps

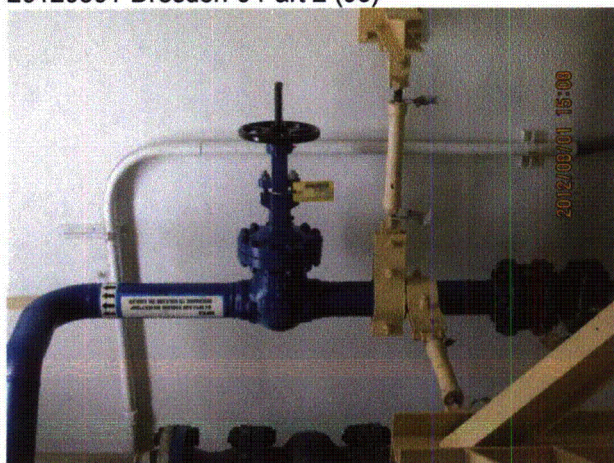
Equipment Description: HPCI/ HPCI Turbine Cooling Water Pump



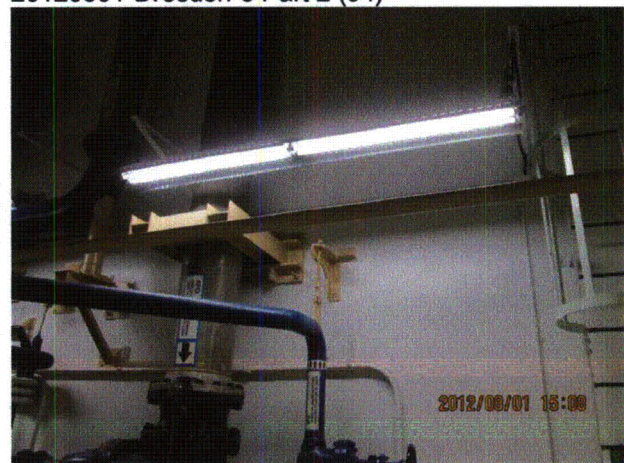
20120801-Dresden-3 Part 2 (93)



20120801-Dresden-3 Part 2 (94)



20120801-Dresden-3 Part 2 (95)



20120801-Dresden-3 Part 2 (96)

Status: ☒ Y ☐ N ☐ U

**Seismic Walkdown Checklist (SWC)**

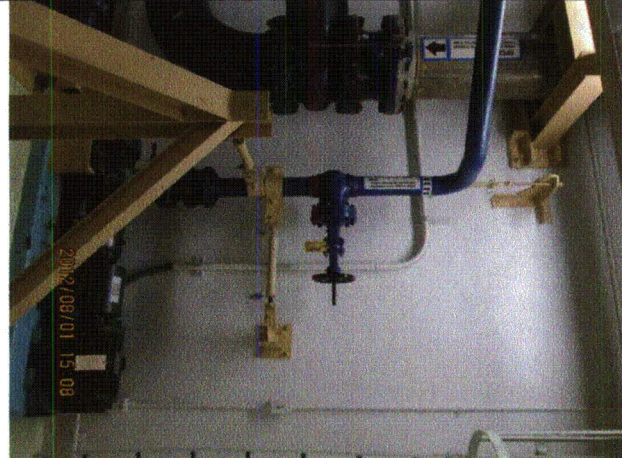
Equipment ID No.: D03-2301-0057-P30

Equipment Class: (5) Horizontal Pumps

Equipment Description: HPCI/ HPCI Turbine Cooling Water Pump



20120801-Dresden-3 Part 2 (97)



20120801-Dresden-3 Part 2 (98)



20120801-Dresden-3 Part 2 (99)

Status: ☒ Y ☐ N ☐ U

**Seismic Walkdown Checklist (SWC)**

Equipment ID No.: D03-2302-----P30

Equipment Class: (5) Horizontal Pumps

Equipment Description: HPCI/ HPCI Pump

Project: Dresden 3 SWEL

Location (Bldg, Elev, Room/Area): Reactor, 476.50 ft, ALL

Manufacturer/Model: \_\_\_\_\_

**Instructions for Completing Checklist**

This checklist may be used to document the results of the Seismic Walkdown of an item of equipment on the SWEL. The space below each of the following questions may be used to record the results of judgments and findings. Additional space is provided at the end of this checklist for documenting other comments.

**Anchorage**

1. Is anchorage configuration verification required (i.e., is the item one of the 50% of SWEL items requiring such verification)? Yes
  
2. Is the anchorage free of bent, broken, missing or loose hardware? Yes
  
3. Is the anchorage free of corrosion that is more than mild surface oxidation? Yes
  
4. Is the anchorage free of visible cracks in the concrete near the anchors? Yes
  
5. Is the anchorage configuration consistent with plant documentation? (Note: This question only applies if the item is one of the 50% for which an anchorage configuration verification is required.) Yes
  
6. Based on the above anchorage evaluations, is the anchorage free of potentially adverse seismic conditions? Yes

Status: ☒ Y ☐ N ☐ U

**Seismic Walkdown Checklist (SWC)**

Equipment ID No.: D03-2302-----P30

Equipment Class: (5) Horizontal Pumps

Equipment Description: HPCI/ HPCI Pump

**Interaction Effects**

- |   |     |
|---|-----|
| 7. Are soft targets free from impact by nearby equipment or structures?   | Yes |
| 8. Are overhead equipment, distribution systems, ceiling tiles and lighting, and masonry block walls not likely to collapse onto the equipment? | Yes |
| 9. Do attached lines have adequate flexibility to avoid damage?   | Yes |
| 10. Based on the above seismic interaction evaluations, is equipment free of potentially adverse seismic interaction effects?                   | Yes |

**Other Adverse Conditions**

- |  |     |
|--|-----|
| 11. Have you looked for and found no adverse seismic conditions that could adversely affect the safety functions of the equipment? | Yes |
|--|-----|

**Comments**

SEWS Anchorage Notes:

There are four 1" diameter cast-in-place bolts per side.

\*\*\*\*\*

Seismic Walkdown Team: J. Griffith & M. Wodarczyk - 8/1/2012

Evaluated by:  James Griffith

Date: 9/30/2012



Michael Wodarczyk

9/30/2012

Status: ☒ Y ☐ N ☐ U

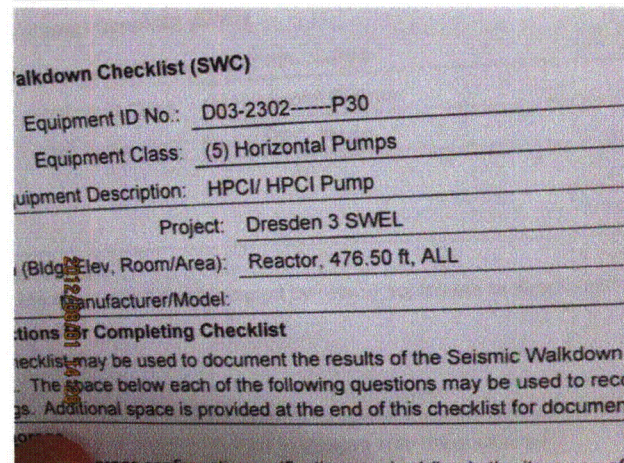
### Seismic Walkdown Checklist (SWC)

Equipment ID No.: D03-2302-----P30

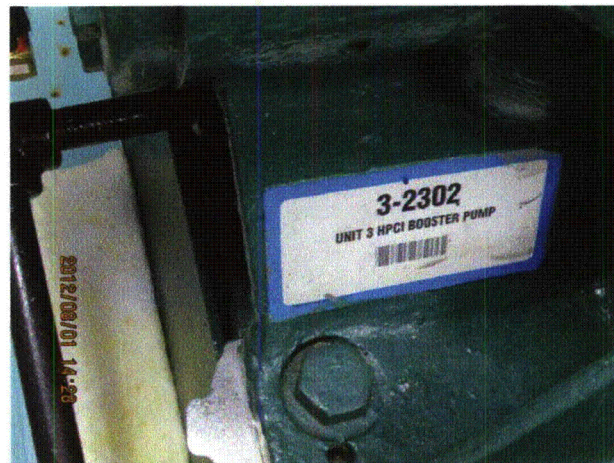
Equipment Class: (5) Horizontal Pumps

Equipment Description: HPCI/ HPCI Pump

#### Photos



20120801-Dresden-3 Part 2 (18)



20120801-Dresden-3 Part 2 (19)



20120801-Dresden-3 Part 2 (20)



20120801-Dresden-3 Part 2 (21)

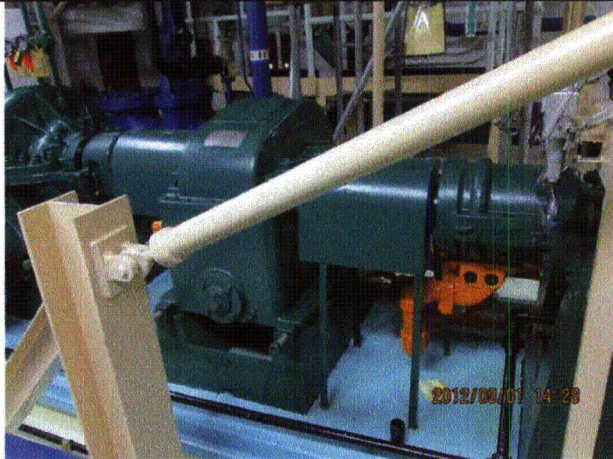
Status: ☒ Y ☐ N ☐ U

**Seismic Walkdown Checklist (SWC)**

Equipment ID No.: D03-2302-----P30

Equipment Class: (5) Horizontal Pumps

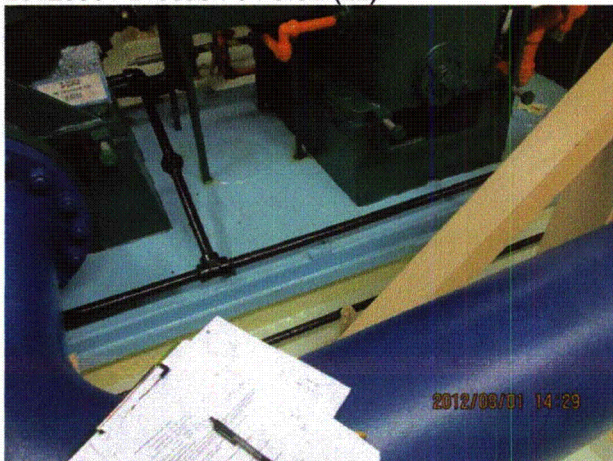
Equipment Description: HPCI/ HPCI Pump



20120801-Dresden-3 Part 2 (22)



20120801-Dresden-3 Part 2 (23)



20120801-Dresden-3 Part 2 (24)



20120801-Dresden-3 Part 2 (25)

Status: ☒ Y ☐ N ☐ U

**Seismic Walkdown Checklist (SWC)**

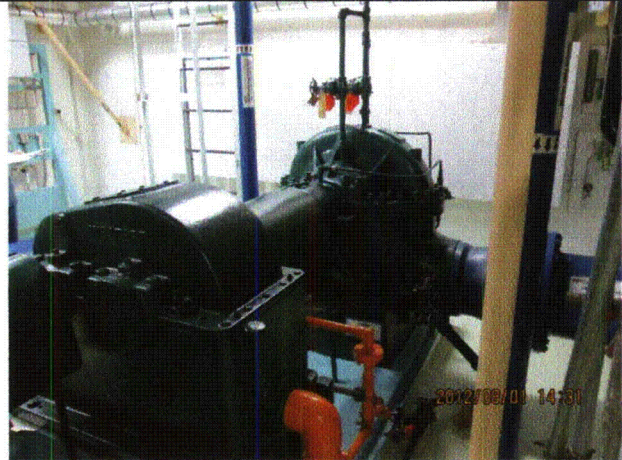
Equipment ID No.: D03-2302-----P30

Equipment Class: (5) Horizontal Pumps

Equipment Description: HPCI/ HPCI Pump



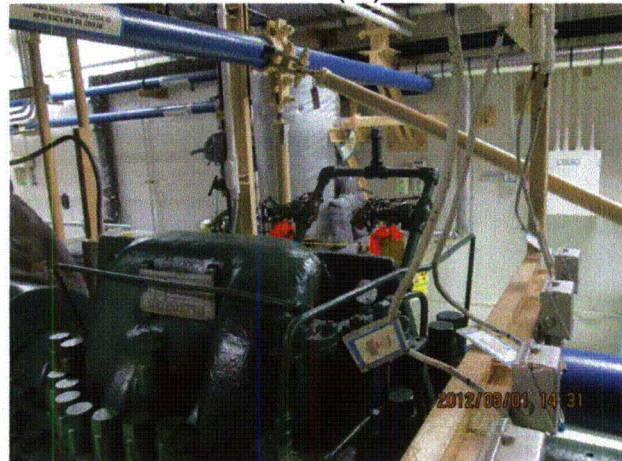
20120801-Dresden-3 Part 2 (26)



20120801-Dresden-3 Part 2 (27)



20120801-Dresden-3 Part 2 (28)



20120801-Dresden-3 Part 2 (29)

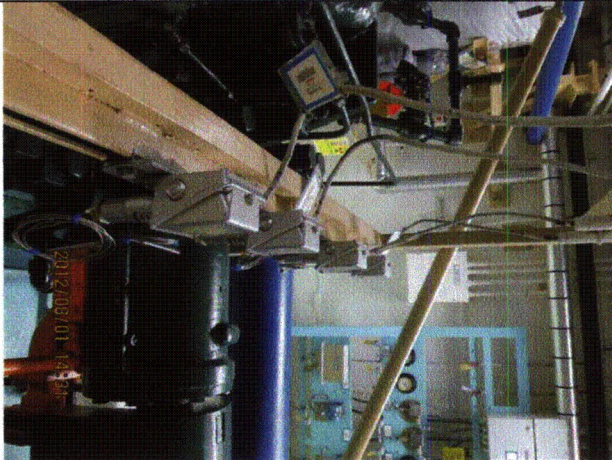
Status: ☒ Y ☐ N ☐ U

**Seismic Walkdown Checklist (SWC)**

Equipment ID No.: D03-2302-----P30

Equipment Class: (5) Horizontal Pumps

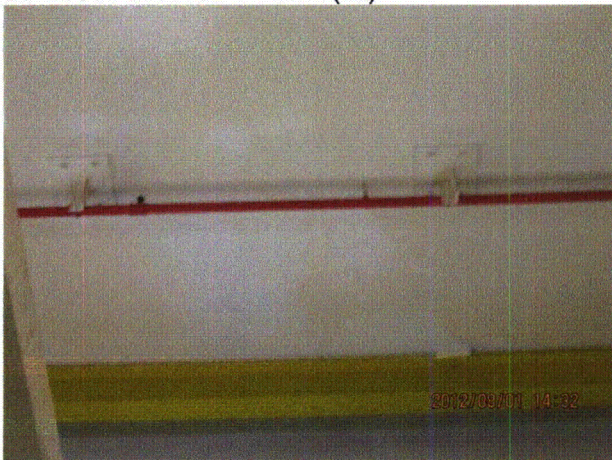
Equipment Description: HPCI/ HPCI Pump



20120801-Dresden-3 Part 2 (30)



20120801-Dresden-3 Part 2 (31)



20120801-Dresden-3 Part 2 (32)



20120801-Dresden-3 Part 2 (33)

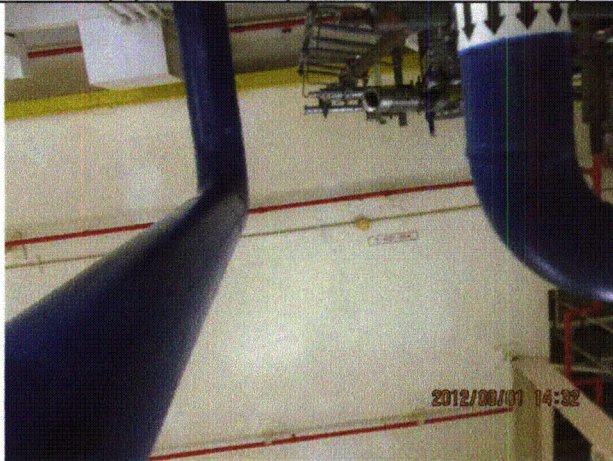
Status: ☒ Y ☐ N ☐ U

**Seismic Walkdown Checklist (SWC)**

Equipment ID No.: D03-2302-----P30

Equipment Class: (5) Horizontal Pumps

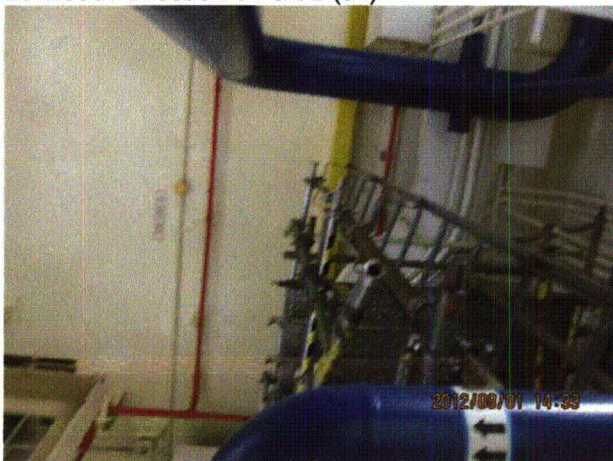
Equipment Description: HPCI/ HPCI Pump



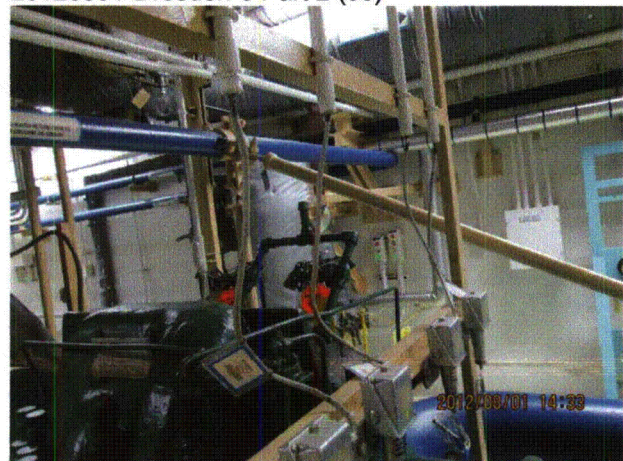
20120801-Dresden-3 Part 2 (34)



20120801-Dresden-3 Part 2 (35)



20120801-Dresden-3 Part 2 (36)



20120801-Dresden-3 Part 2 (37)

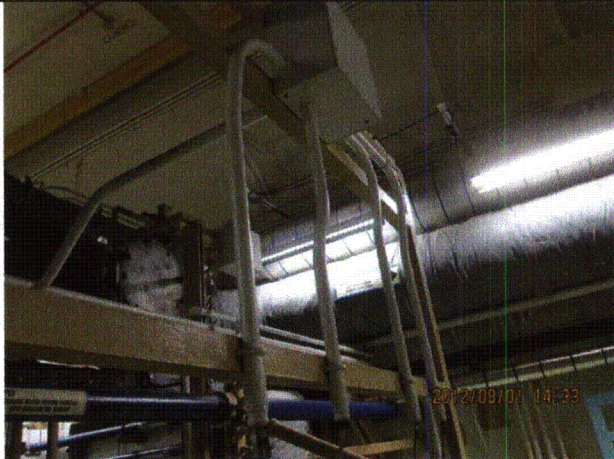
Status: ☒ Y ☐ N ☐ U

**Seismic Walkdown Checklist (SWC)**

Equipment ID No.: D03-2302-----P30

Equipment Class: (5) Horizontal Pumps

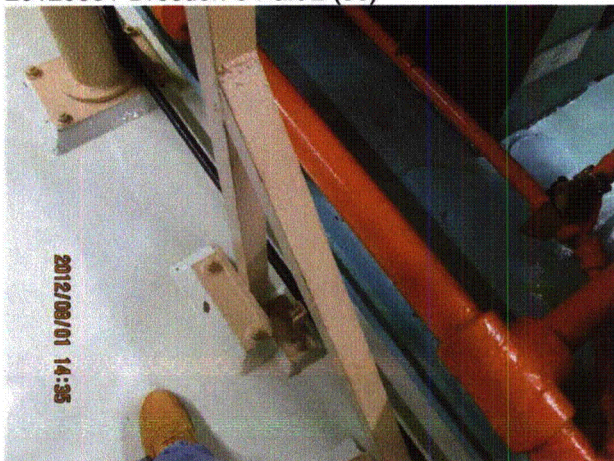
Equipment Description: HPCI/ HPCI Pump



20120801-Dresden-3 Part 2 (38)



20120801-Dresden-3 Part 2 (39)



20120801-Dresden-3 Part 2 (40)



20120801-Dresden-3 Part 2 (41)

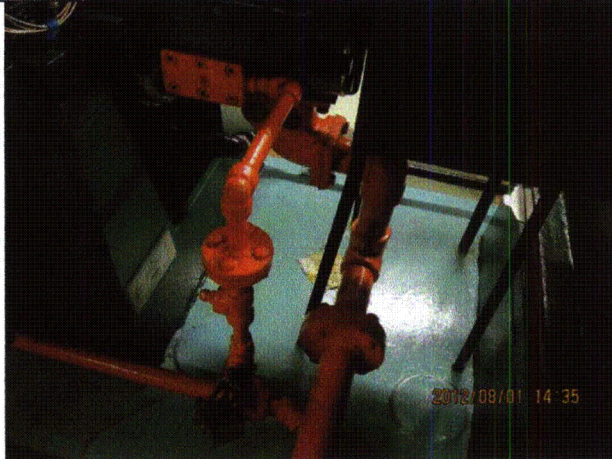
Status: ☒ Y ☐ N ☐ U

**Seismic Walkdown Checklist (SWC)**

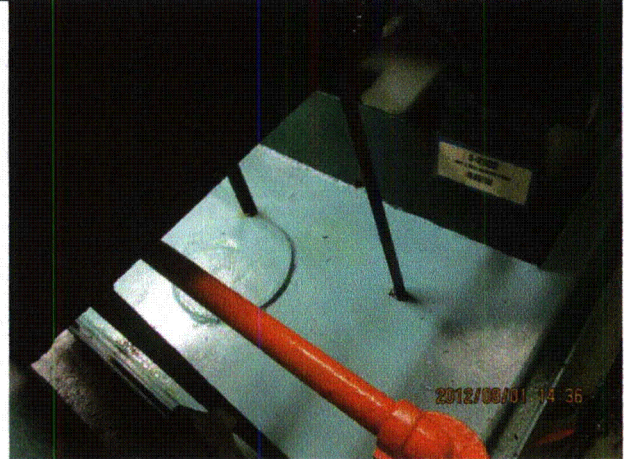
Equipment ID No.: D03-2302-----P30

Equipment Class: (5) Horizontal Pumps

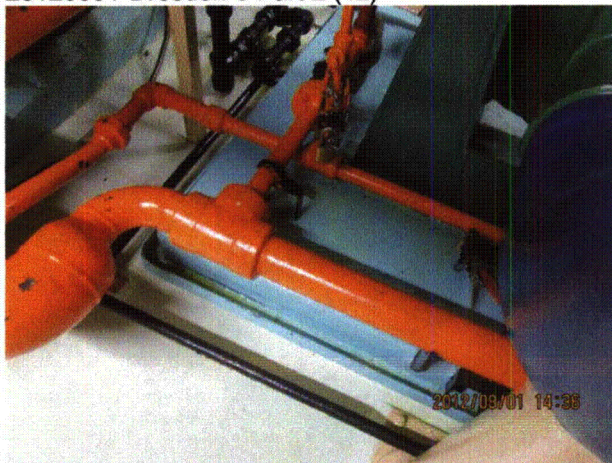
Equipment Description: HPCI/ HPCI Pump



20120801-Dresden-3 Part 2 (42)



20120801-Dresden-3 Part 2 (43)



20120801-Dresden-3 Part 2 (44)

Status: ☒ Y ☐ N ☐ U

**Seismic Walkdown Checklist (SWC)**

Equipment ID No.: D03-2320-GSCE-F05

Equipment Class: (9) Fans

Equipment Description: HPCI/ Gland Seal Condenser Exhaust Fan

Project: Dresden 3 SWEL

Location (Bldg, Elev, Room/Area): Reactor, 476.50 ft, ALL

Manufacturer/Model: \_\_\_\_\_

**Instructions for Completing Checklist**

This checklist may be used to document the results of the Seismic Walkdown of an item of equipment on the SWEL. The space below each of the following questions may be used to record the results of judgments and findings. Additional space is provided at the end of this checklist for documenting other comments.

**Anchorage**

1. Is anchorage configuration verification required (i.e., is the item one of the 50% of SWEL items requiring such verification)? Yes
2. Is the anchorage free of bent, broken, missing or loose hardware? Yes
3. Is the anchorage free of corrosion that is more than mild surface oxidation? Yes
4. Is the anchorage free of visible cracks in the concrete near the anchors? Not Applicable  
*Fan is mounted to condenser.*
5. Is the anchorage configuration consistent with plant documentation? (Note: This question only applies if the item is one of the 50% for which an anchorage configuration verification is required.) Yes
6. Based on the above anchorage evaluations, is the anchorage free of potentially adverse seismic conditions? Yes

Status: ☒ Y ☐ N ☐ U

**Seismic Walkdown Checklist (SWC)**

Equipment ID No.: D03-2320-GSCE-F05

Equipment Class: (9) Fans

Equipment Description: HPCI/ Gland Seal Condenser Exhaust Fan

**Interaction Effects**

- |  |     |
|--|-----|
| 7. Are soft targets free from impact by nearby equipment or structures?  | Yes |
| 8. Are overhead equipment, distribution systems, ceiling tiles and lighting, and masonry block walls not likely to collapse onto the equipment?<br><i>Overhead light fixture with an open S-hook. Fixture has hard-wired cord and will not impact soft targets. Judged to be acceptable. See IR 1396017.</i> | Yes |
| 9. Do attached lines have adequate flexibility to avoid damage?  | Yes |
| 10. Based on the above seismic interaction evaluations, is equipment free of potentially adverse seismic interaction effects?  | Yes |

**Other Adverse Conditions**

- |  |     |
|--|-----|
| 11. Have you looked for and found no adverse seismic conditions that could adversely affect the safety functions of the equipment? | Yes |
|--|-----|

**Comments**

SEWS Anchorage Notes:

Exhaust fan 2' long and 2' in diameter bolted to a bracket with four 1/2" bolts. The bracket is welded to the condenser with very long fillet welds.

\*\*\*\*\*

Seismic Walkdown Team: J. Griffith & M. Wodarczyk - 8/1/2012

Evaluated by: James Griffith

Date: 9/30/2012

Michael J. Wodarczyk

Michael Wodarczyk

9/30/2012

Status: ☒ Y ☐ N ☐ U

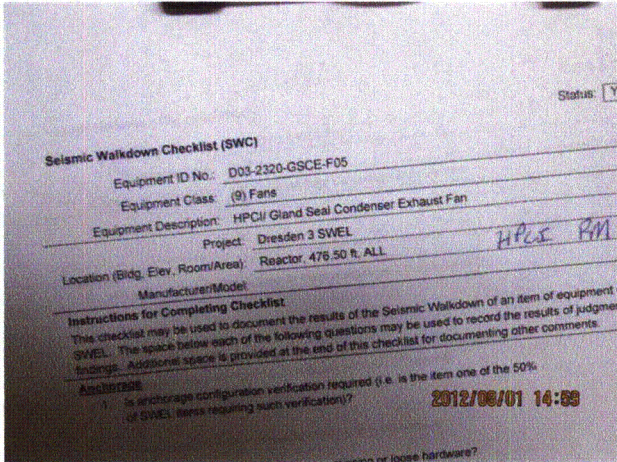
Seismic Walkdown Checklist (SWC)

Equipment ID No.: D03-2320-GSCE-F05

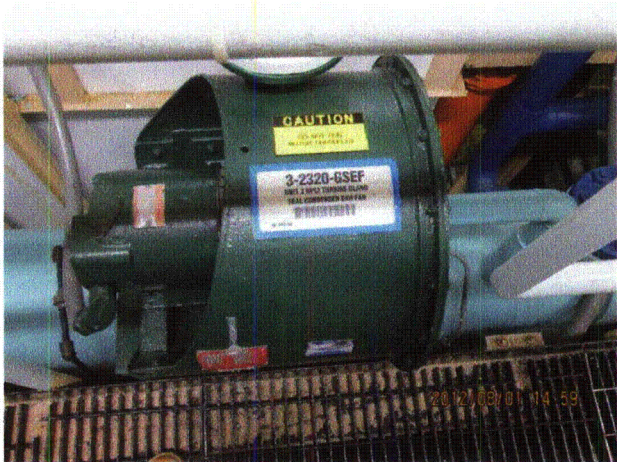
Equipment Class: (9) Fans

Equipment Description: HPCI/ Gland Seal Condenser Exhaust Fan

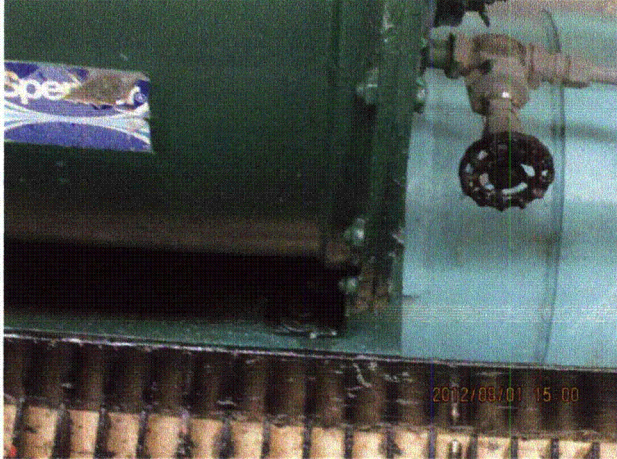
Photos



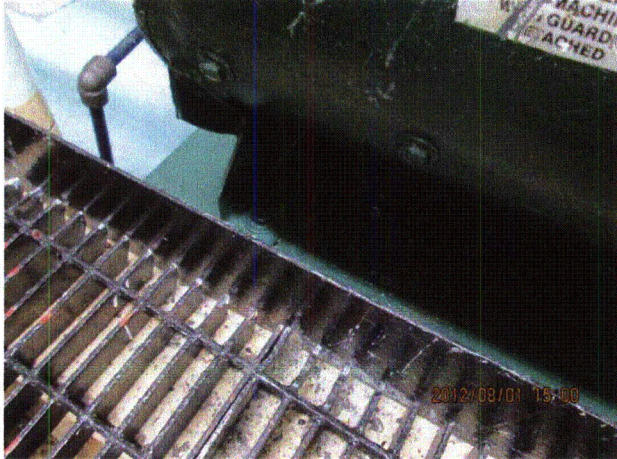
20120801-Dresden-3 Part 2 (73)



20120801-Dresden-3 Part 2 (74)



20120801-Dresden-3 Part 2 (75)



20120801-Dresden-3 Part 2 (76)

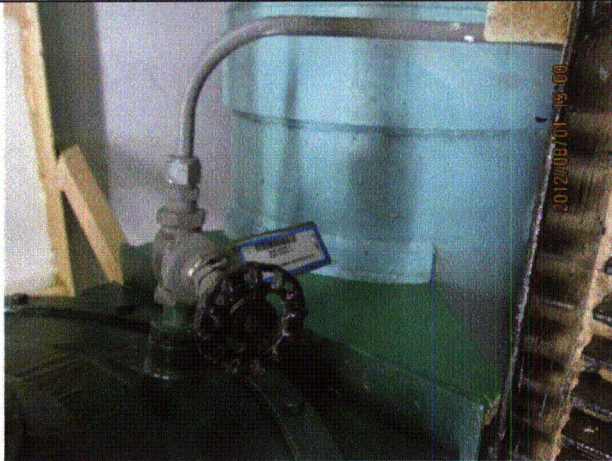
Status: ☒ Y ☐ N ☐ U

**Seismic Walkdown Checklist (SWC)**

Equipment ID No.: D03-2320-GSCE-F05

Equipment Class: (9) Fans

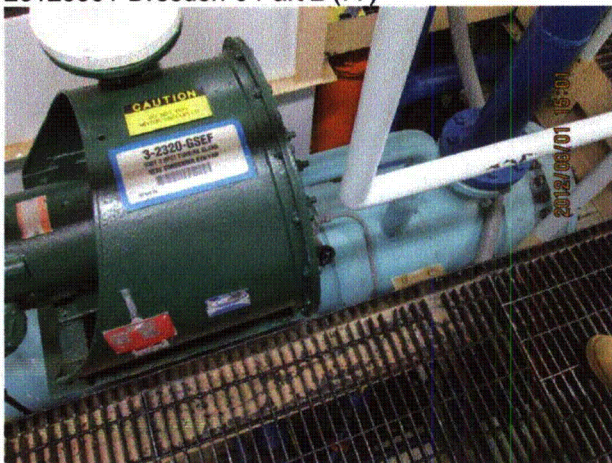
Equipment Description: HPCI/ Gland Seal Condenser Exhaust Fan



20120801-Dresden-3 Part 2 (77)



20120801-Dresden-3 Part 2 (78)



20120801-Dresden-3 Part 2 (79)



20120801-Dresden-3 Part 2 (80)

Status: ☒ Y ☐ N ☐ U

**Seismic Walkdown Checklist (SWC)**

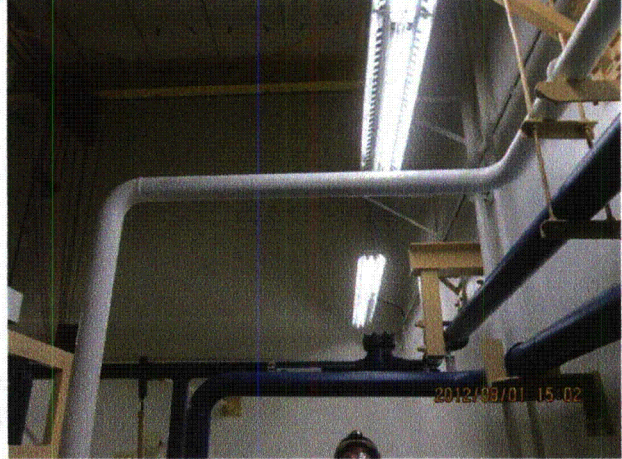
Equipment ID No.: D03-2320-GSCE-F05

Equipment Class: (9) Fans

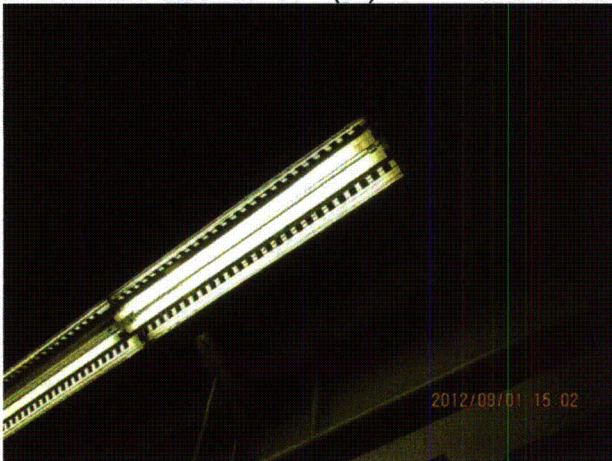
Equipment Description: HPCI/ Gland Seal Condenser Exhaust Fan



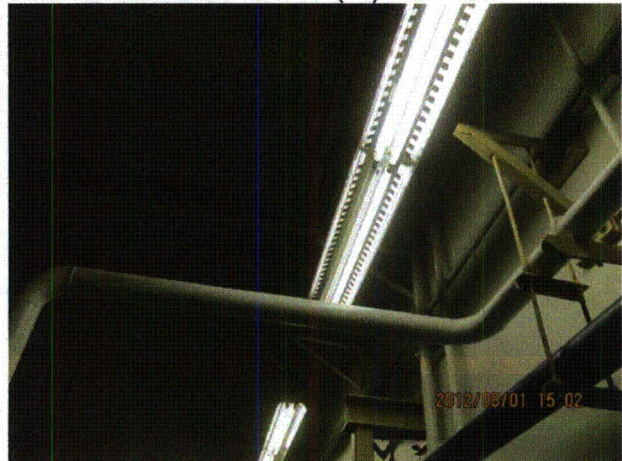
20120801-Dresden-3 Part 2 (81)



20120801-Dresden-3 Part 2 (82)



20120801-Dresden-3 Part 2 (83)



20120801-Dresden-3 Part 2 (84)

Status: ☒ Y ☐ N ☐ U

**Seismic Walkdown Checklist (SWC)**

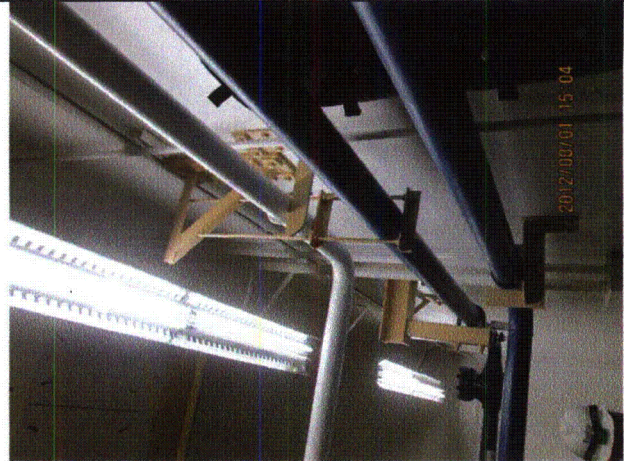
Equipment ID No.: D03-2320-GSCE-F05

Equipment Class: (9) Fans

Equipment Description: HPCI/ Gland Seal Condenser Exhaust Fan



20120801-Dresden-3 Part 2 (85)



20120801-Dresden-3 Part 2 (86)

Status: ☒ Y ☐ N ☐ U

**Seismic Walkdown Checklist (SWC)**

Equipment ID No.: D03-2380-----PSH

Equipment Class: (20) Instrumentation and Control Panels and Cabinets

Equipment Description: HPCI/ HPCI Turbine Pressure Switch High

Project: Dresden 3 SWEL

Location (Bldg, Elev, Room/Area): Reactor, 476.50 ft, ALL

Manufacturer/Model: \_\_\_\_\_

**Instructions for Completing Checklist**

This checklist may be used to document the results of the Seismic Walkdown of an item of equipment on the SWEL. The space below each of the following questions may be used to record the results of judgments and findings. Additional space is provided at the end of this checklist for documenting other comments.

**Anchorage**

- |  |                |
|--|----------------|
| 1. Is anchorage configuration verification required (i.e., is the item one of the 50% of SWEL items requiring such verification)?  | No             |
| 2. Is the anchorage free of bent, broken, missing or loose hardware?   | Yes            |
| 3. Is the anchorage free of corrosion that is more than mild surface oxidation?  | Yes            |
| 4. Is the anchorage free of visible cracks in the concrete near the anchors?   | Yes            |
| 5. Is the anchorage configuration consistent with plant documentation? (Note: This question only applies if the item is one of the 50% for which an anchorage configuration verification is required.) | Not Applicable |
| 6. Based on the above anchorage evaluations, is the anchorage free of potentially adverse seismic conditions?  | Yes            |

Status: ☒ Y ☐ N ☐ U

**Seismic Walkdown Checklist (SWC)**

Equipment ID No.: D03-2380-----PSH

Equipment Class: (20) Instrumentation and Control Panels and Cabinets

Equipment Description: HPCI/ HPCI Turbine Pressure Switch High

**Interaction Effects**

7. Are soft targets free from impact by nearby equipment or structures? Yes
8. Are overhead equipment, distribution systems, ceiling tiles and lighting, and masonry block walls not likely to collapse onto the equipment? Yes  
*Overhead light fixture with an open S-hook. Fixture has hard-wired cord and will not impact soft targets. Judged to be acceptable. See IR 1396017.*
9. Do attached lines have adequate flexibility to avoid damage? Yes
10. Based on the above seismic interaction evaluations, is equipment free of potentially adverse seismic interaction effects? Yes

**Other Adverse Conditions**

11. Have you looked for and found no adverse seismic conditions that could adversely affect the safety functions of the equipment? Yes

**Comments**

Seismic Walkdown Team: J. Griffith & M. Wodarczyk - 8/1/2012

Item is mounted on rack 2203-29. Rack also braced to back wall.

Evaluated by: James D. Griffith James Griffith

Date: 9/30/2012

Michael J. Wodarczyk

Michael Wodarczyk

9/30/2012

Status: ☒ Y ☐ N ☐ U

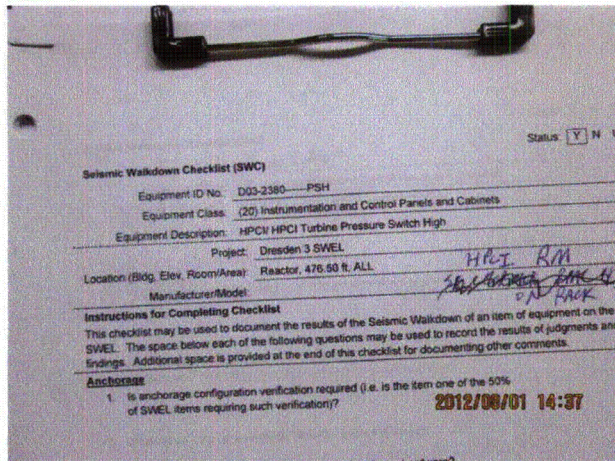
### Seismic Walkdown Checklist (SWC)

Equipment ID No.: D03-2380-----PSH

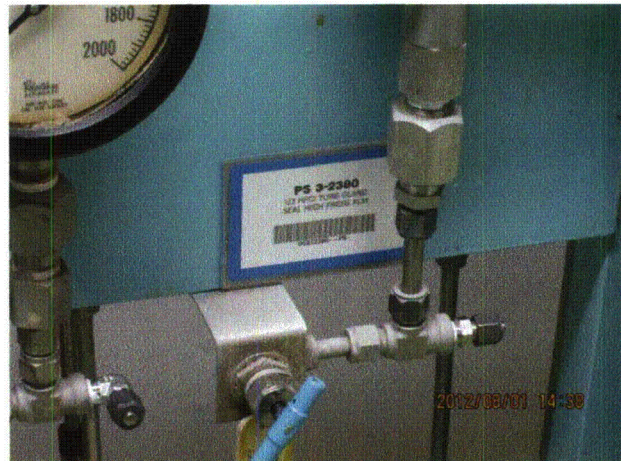
Equipment Class: (20) Instrumentation and Control Panels and Cabinets

Equipment Description: HPCI/ HPCI Turbine Pressure Switch High

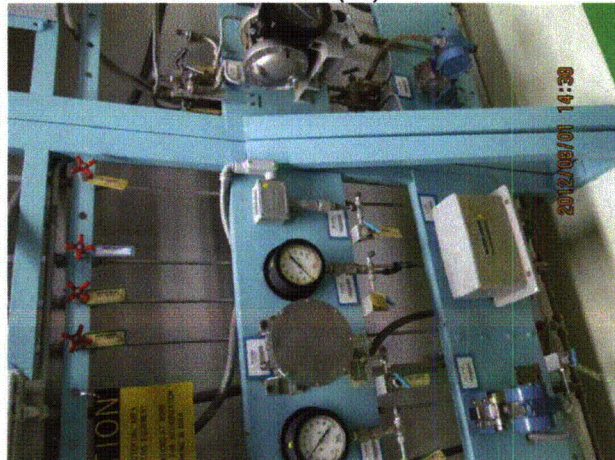
#### Photos



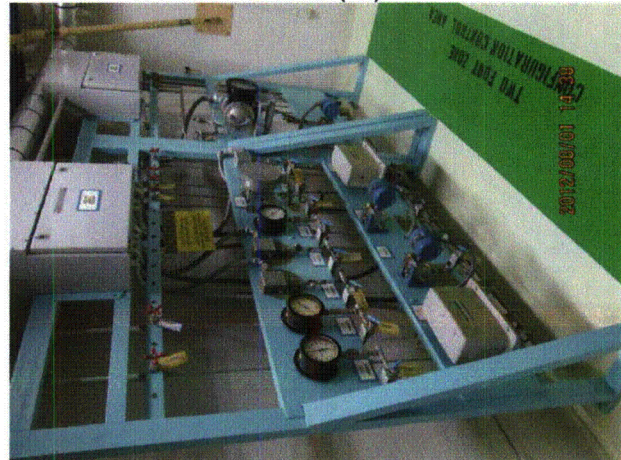
20120801-Dresden-3 Part 2 (45)



20120801-Dresden-3 Part 2 (46)



20120801-Dresden-3 Part 2 (47)



20120801-Dresden-3 Part 2 (48)

Status: ☒ Y ☐ N ☐ U

**Seismic Walkdown Checklist (SWC)**

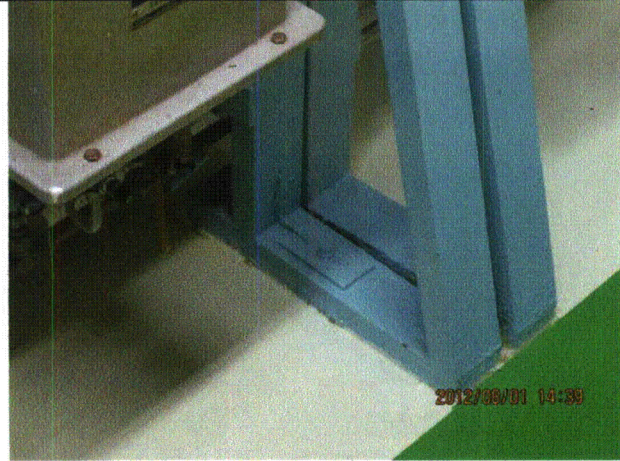
Equipment ID No.: D03-2380-----PSH

Equipment Class: (20) Instrumentation and Control Panels and Cabinets

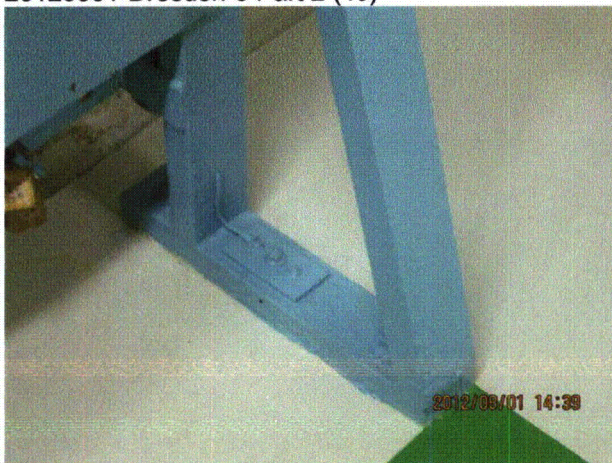
Equipment Description: HPCI/ HPCI Turbine Pressure Switch High



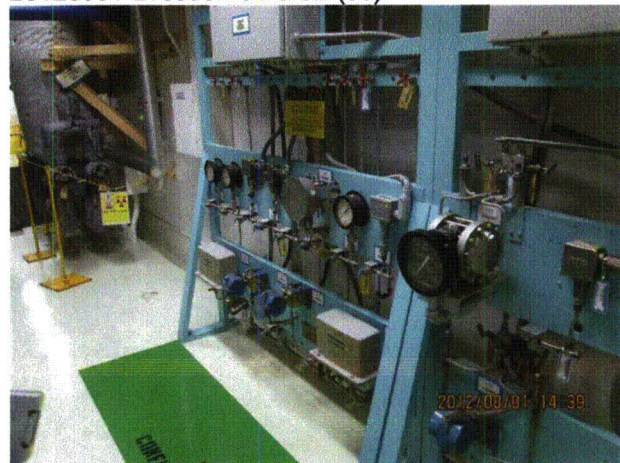
20120801-Dresden-3 Part 2 (49)



20120801-Dresden-3 Part 2 (50)



20120801-Dresden-3 Part 2 (51)



20120801-Dresden-3 Part 2 (52)

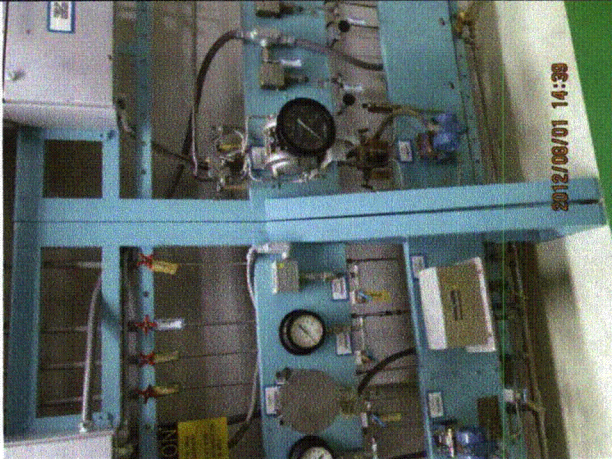
Status: ☒ Y ☐ N ☐ U

**Seismic Walkdown Checklist (SWC)**

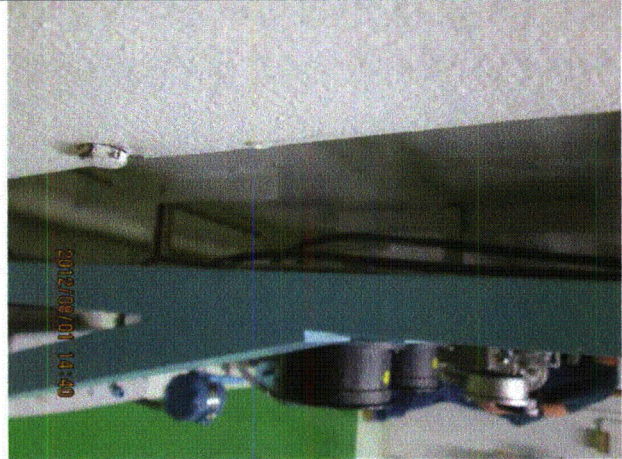
Equipment ID No.: D03-2380-----PSH

Equipment Class: (20) Instrumentation and Control Panels and Cabinets

Equipment Description: HPCI/ HPCI Turbine Pressure Switch High



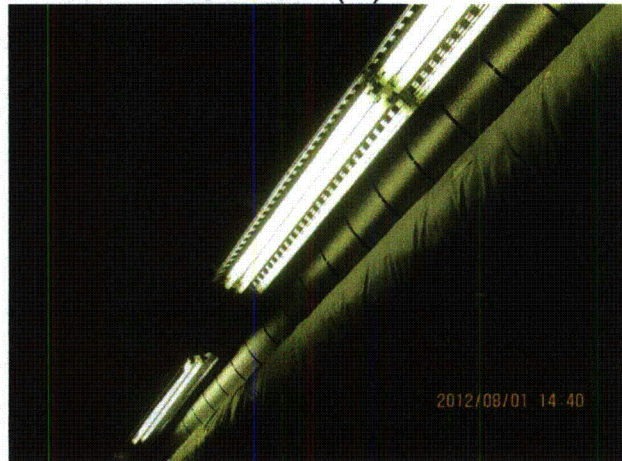
20120801-Dresden-3 Part 2 (53)



20120801-Dresden-3 Part 2 (54)



20120801-Dresden-3 Part 2 (55)



20120801-Dresden-3 Part 2 (56)

Status: ☒ Y ☐ N ☐ U

**Seismic Walkdown Checklist (SWC)**

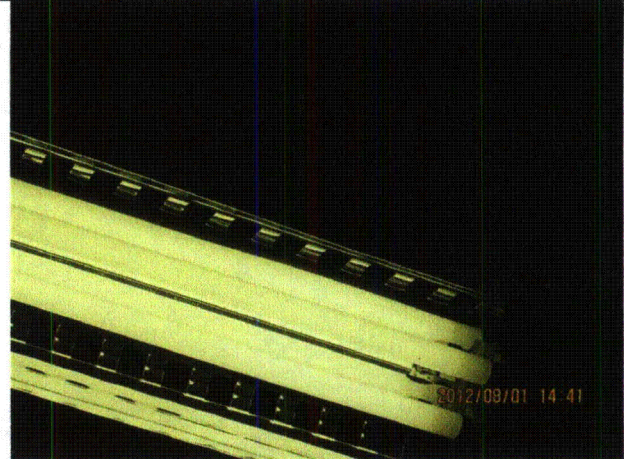
Equipment ID No.: D03-2380-----PSH

Equipment Class: (20) Instrumentation and Control Panels and Cabinets

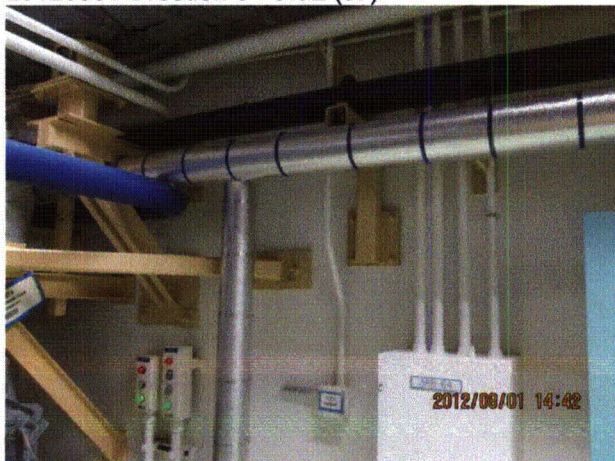
Equipment Description: HPCI/ HPCI Turbine Pressure Switch High



20120801-Dresden-3 Part 2 (57)



20120801-Dresden-3 Part 2 (58)



20120801-Dresden-3 Part 2 (59)



20120801-Dresden-3 Part 2 (60)

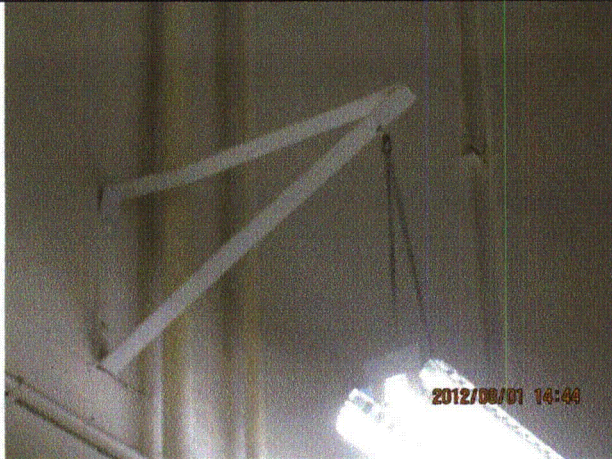
Status: ☒ Y ☐ N ☐ U

**Seismic Walkdown Checklist (SWC)**

Equipment ID No.: D03-2380-----PSH

Equipment Class: (20) Instrumentation and Control Panels and Cabinets

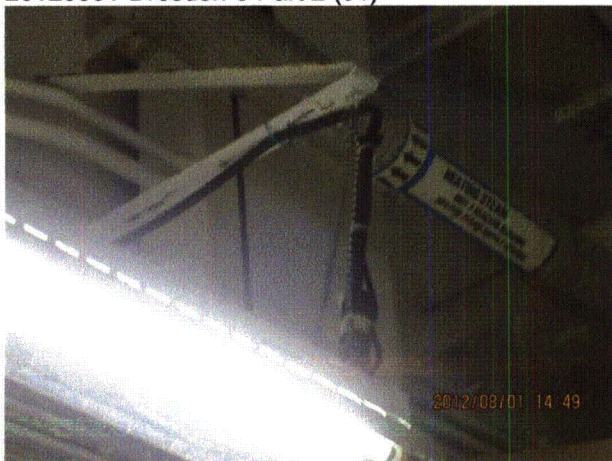
Equipment Description: HPCI/ HPCI Turbine Pressure Switch High



20120801-Dresden-3 Part 2 (61)



20120801-Dresden-3 Part 2 (62)



20120801-Dresden-3 Part 2 (63)



20120801-Dresden-3 Part 2 (64)

Status: ☒ Y ☐ N ☐ U

**Seismic Walkdown Checklist (SWC)**

Equipment ID No.: D03-2380-----PSH

Equipment Class: (20) Instrumentation and Control Panels and Cabinets

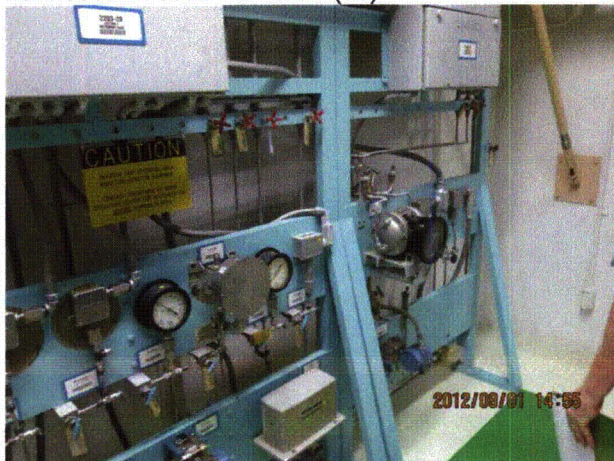
Equipment Description: HPCI/ HPCI Turbine Pressure Switch High



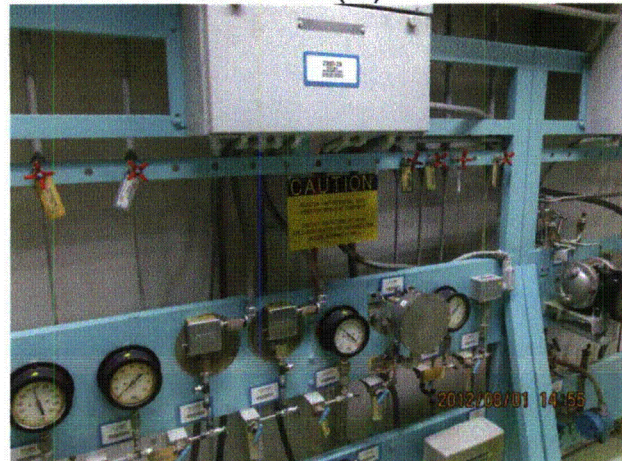
20120801-Dresden-3 Part 2 (65)



20120801-Dresden-3 Part 2 (66)



20120801-Dresden-3 Part 2 (67)



20120801-Dresden-3 Part 2 (68)

Status: ☒ Y ☐ N ☐ U

**Seismic Walkdown Checklist (SWC)**

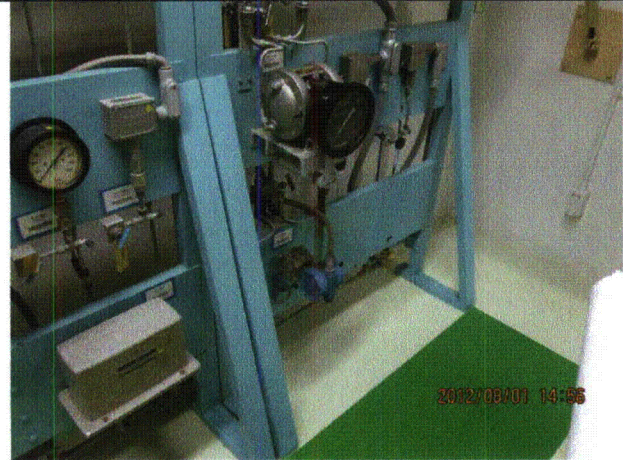
Equipment ID No.: D03-2380-----PSH

Equipment Class: (20) Instrumentation and Control Panels and Cabinets

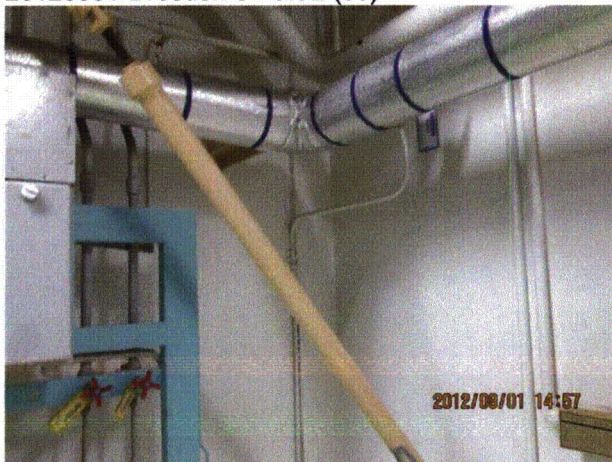
Equipment Description: HPCI/ HPCI Turbine Pressure Switch High



20120801-Dresden-3 Part 2 (69)



20120801-Dresden-3 Part 2 (70)



20120801-Dresden-3 Part 2 (71)



20120801-Dresden-3 Part 2 (72)

Status: ☒ Y ☐ N ☐ U

**Seismic Walkdown Checklist (SWC)**

Equipment ID No.: D03-3903-----P30

Equipment Class: (5) Horizontal Pumps

Equipment Description: SERVICE WATER/ Diesel Generator Cooling Water Pump

Project: Dresden 3 SWEL

Location (Bldg, Elev, Room/Area): C. House, 490.67 ft, ALL

Manufacturer/Model: \_\_\_\_\_

**Instructions for Completing Checklist**

This checklist may be used to document the results of the Seismic Walkdown of an item of equipment on the SWEL. The space below each of the following questions may be used to record the results of judgments and findings. Additional space is provided at the end of this checklist for documenting other comments.

**Anchorage**

- |  |     |
|--|-----|
| 1. Is anchorage configuration verification required (i.e., is the item one of the 50% of SWEL items requiring such verification)?  | Yes |
| 2. Is the anchorage free of bent, broken, missing or loose hardware?   | Yes |
| 3. Is the anchorage free of corrosion that is more than mild surface oxidation?  | Yes |
| 4. Is the anchorage free of visible cracks in the concrete near the anchors?<br><i>Minor shrinkage cracks in pedestal judged to be acceptable.</i>   | Yes |
| 5. Is the anchorage configuration consistent with plant documentation? (Note: This question only applies if the item is one of the 50% for which an anchorage configuration verification is required.) | Yes |
| 6. Based on the above anchorage evaluations, is the anchorage free of potentially adverse seismic conditions?  | Yes |

Status: ☒ Y ☐ N ☐ U

**Seismic Walkdown Checklist (SWC)**

Equipment ID No.: D03-3903-----P30

Equipment Class: (5) Horizontal Pumps

Equipment Description: SERVICE WATER/ Diesel Generator Cooling Water Pump

**Interaction Effects**

7. Are soft targets free from impact by nearby equipment or structures? Yes
8. Are overhead equipment, distribution systems, ceiling tiles and lighting, and masonry block walls not likely to collapse onto the equipment? Yes  
*Scaffold knuckle on existing support behaves as a correctly-oriented beam clamp, and is judged to be acceptable.*
9. Do attached lines have adequate flexibility to avoid damage? Yes
10. Based on the above seismic interaction evaluations, is equipment free of potentially adverse seismic interaction effects? Yes

**Other Adverse Conditions**

11. Have you looked for and found no adverse seismic conditions that could adversely affect the safety functions of the equipment? Yes  
*Abandoned adjacent pump missing nuts at anchor studs, but restrained against lateral movement by the studs. Pump judged to be acceptable.*

**Comments**

SEWS Anchorage Notes:

40 H.P. Pump anchored by 4 - 3/4" cast-in-place anchors.

\*\*\*\*\*

Seismic Walkdown Team: J. Griffith & M. Wodarczyk - 8/1/2012

Evaluated by: James Griffith

Date: 9/30/2012

Michael J. Wodarczyk

Michael Wodarczyk

9/30/2012

Status: ☒ Y ☐ N ☐ U

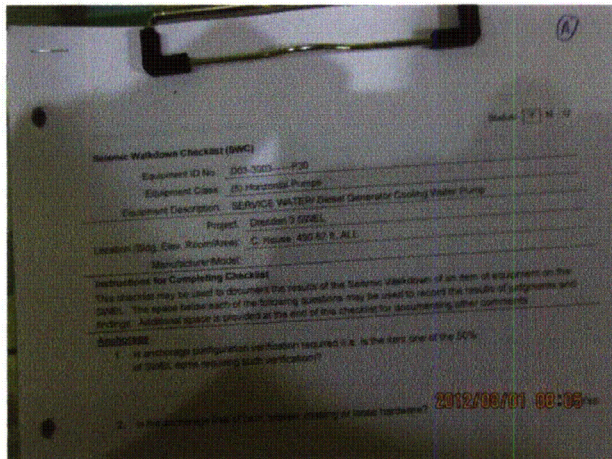
### Seismic Walkdown Checklist (SWC)

Equipment ID No.: D03-3903-----P30

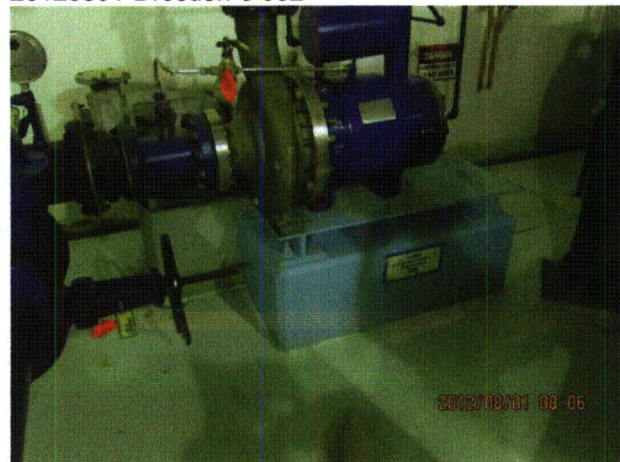
Equipment Class: (5) Horizontal Pumps

Equipment Description: SERVICE WATER/ Diesel Generator Cooling Water Pump

#### Photos



20120801-Dresden-3 001



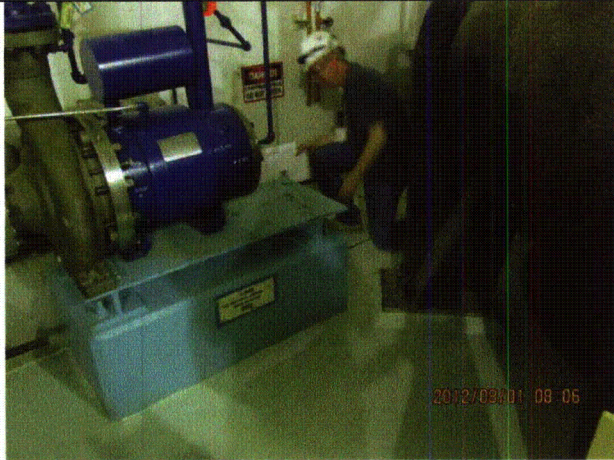
Status: ☒ Y ☐ N ☐ U

**Seismic Walkdown Checklist (SWC)**

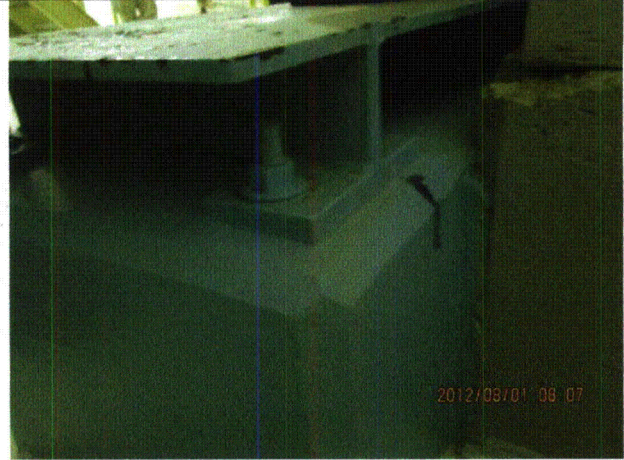
Equipment ID No.: D03-3903-----P30

Equipment Class: (5) Horizontal Pumps

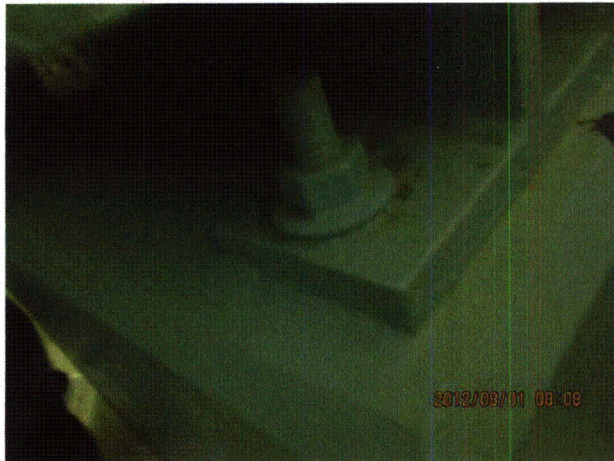
Equipment Description: SERVICE WATER/ Diesel Generator Cooling Water Pump



20120801-Dresden-3 005.



20120801-Dresden-3 006



20120801-Dresden-3 007



20120801-Dresden-3 008

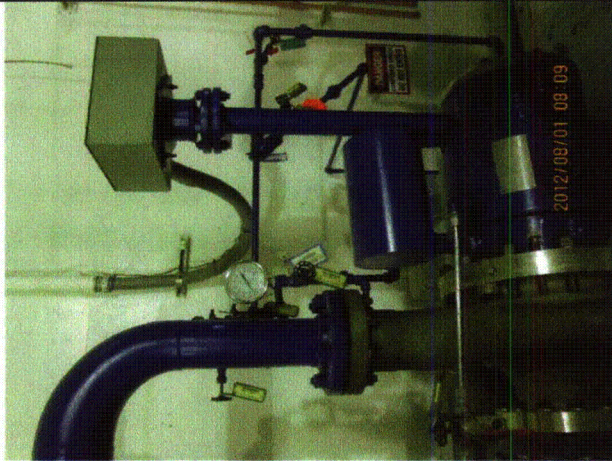
Status: ☒ Y ☐ N ☐ U

**Seismic Walkdown Checklist (SWC)**

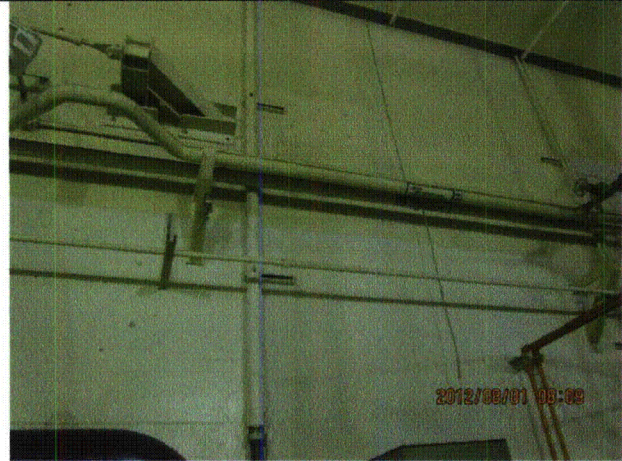
Equipment ID No.: D03-3903-----P30

Equipment Class: (5) Horizontal Pumps

Equipment Description: SERVICE WATER/ Diesel Generator Cooling Water Pump



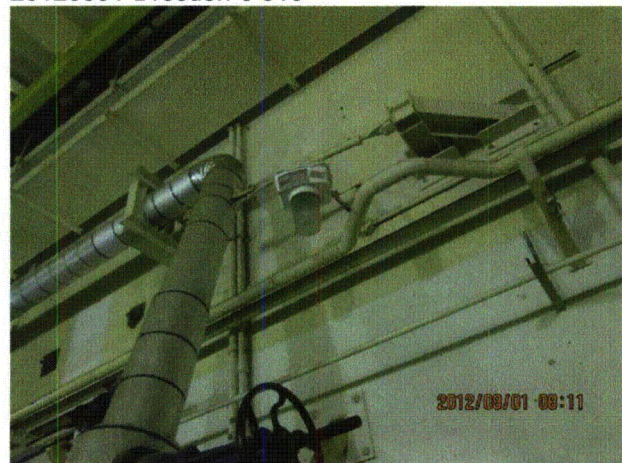
20120801-Dresden-3 009



20120801-Dresden-3 010



20120801-Dresden-3 011



20120801-Dresden-3 012

Status: ☒ Y ☐ N ☐ U

**Seismic Walkdown Checklist (SWC)**

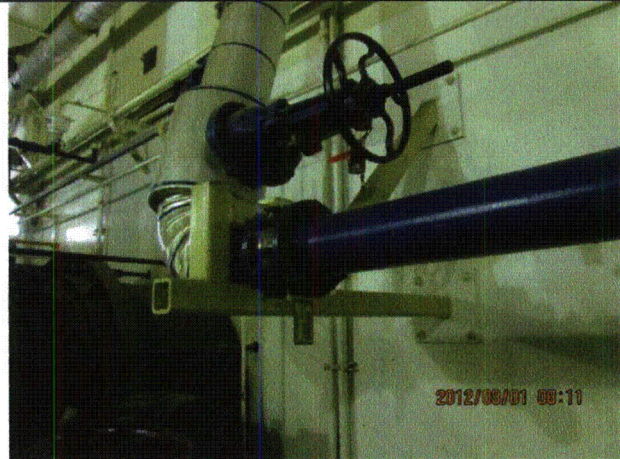
Equipment ID No.: D03-3903-----P30

Equipment Class: (5) Horizontal Pumps

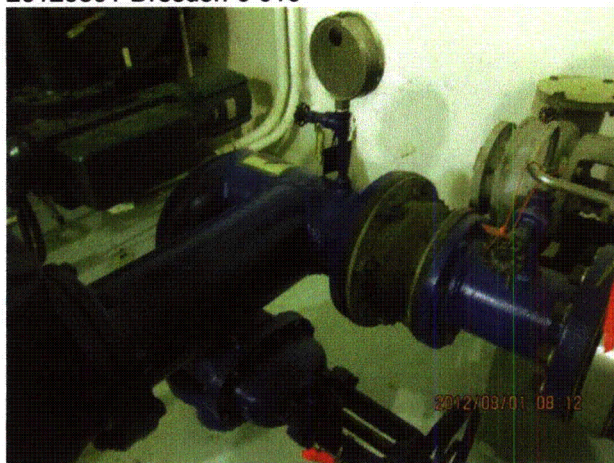
Equipment Description: SERVICE WATER/ Diesel Generator Cooling Water Pump



20120801-Dresden-3 013



20120801-Dresden-3 014



20120801-Dresden-3 015



20120801-Dresden-3 016

Status: ☒ Y ☐ N ☐ U

**Seismic Walkdown Checklist (SWC)**

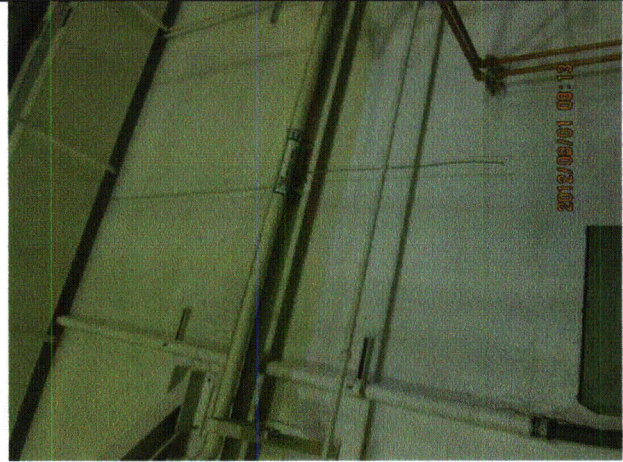
Equipment ID No.: D03-3903-----P30

Equipment Class: (5) Horizontal Pumps

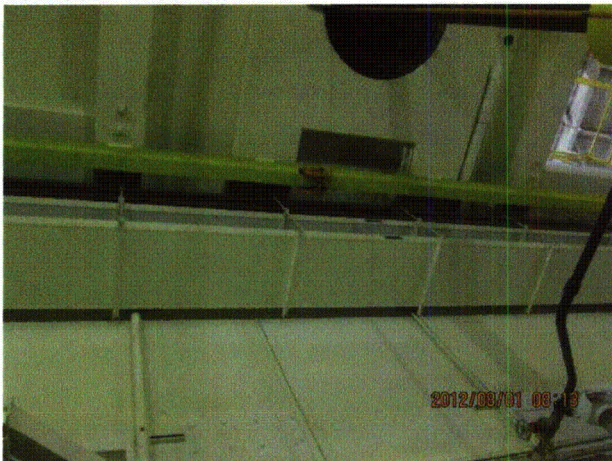
Equipment Description: SERVICE WATER/ Diesel Generator Cooling Water Pump



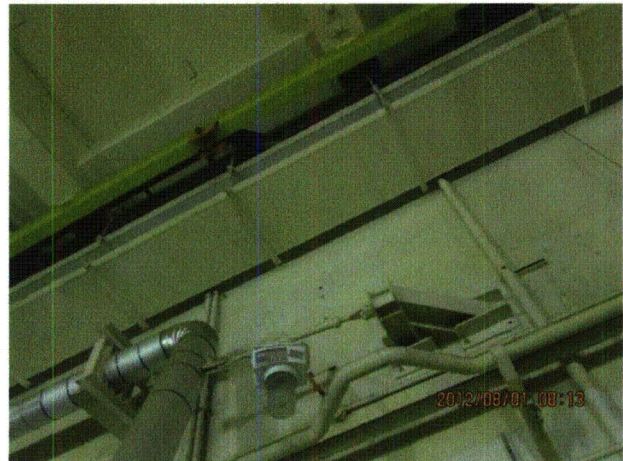
20120801-Dresden-3 017



20120801-Dresden-3 018



20120801-Dresden-3 019



20120801-Dresden-3 020

Status: ☒ Y ☐ N ☐ U

**Seismic Walkdown Checklist (SWC)**

Equipment ID No.: D03-4600-B---T05

Equipment Class: (12) Air Compressors

Equipment Description: DIESEL GENERATOR/ Primary Gas Air Receiver Unit "A1"

Project: Dresden 3 SWEL

Location (Bldg, Elev, Room/Area): Turbine, 517.50 ft, ALL

Manufacturer/Model: \_\_\_\_\_

**Instructions for Completing Checklist**

This checklist may be used to document the results of the Seismic Walkdown of an item of equipment on the SWEL. The space below each of the following questions may be used to record the results of judgments and findings. Additional space is provided at the end of this checklist for documenting other comments.

**Anchorage**

- |    |   |     |
|----|---|-----|
| 1. | Is anchorage configuration verification required (i.e., is the item one of the 50% of SWEL items requiring such verification)?  | Yes |
| 2. | Is the anchorage free of bent, broken, missing or loose hardware?   | Yes |
| 3. | Is the anchorage free of corrosion that is more than mild surface oxidation?  | Yes |
| 4. | Is the anchorage free of visible cracks in the concrete near the anchors?<br><i>Minor shrinkage cracks in floor judged acceptable.</i>  | Yes |
| 5. | Is the anchorage configuration consistent with plant documentation? (Note: This question only applies if the item is one of the 50% for which an anchorage configuration verification is required.) | Yes |
| 6. | Based on the above anchorage evaluations, is the anchorage free of potentially adverse seismic conditions?  | Yes |

Status: ☒ Y ☐ N ☐ U

**Seismic Walkdown Checklist (SWC)**

Equipment ID No.: D03-4600-B----T05

Equipment Class: (12) Air Compressors

Equipment Description: DIESEL GENERATOR/ Primary Gas Air Receiver Unit "A1"

**Interaction Effects**

- |  |     |
|--|-----|
| 7. Are soft targets free from impact by nearby equipment or structures?  | Yes |
| 8. Are overhead equipment, distribution systems, ceiling tiles and lighting, and masonry block walls not likely to collapse onto the equipment?<br><i>Overhead light fixtures judged to be acceptable.</i> | Yes |
| 9. Do attached lines have adequate flexibility to avoid damage?  | Yes |
| 10. Based on the above seismic interaction evaluations, is equipment free of potentially adverse seismic interaction effects?  | Yes |

**Other Adverse Conditions**

- |  |     |
|--|-----|
| 11. Have you looked for and found no adverse seismic conditions that could adversely affect the safety functions of the equipment? | Yes |
|--|-----|

**Comments**

SEWS Anchorage Notes:

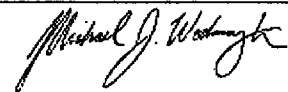
Air Start skid anchored by 10 1/2" diameter concrete expansion anchors (5 per side).

\*\*\*\*\*

Seismic Walkdown Team: J. Griffith & M. Wodarczyk - 7/31/2012

Evaluated by:  James Griffith

Date: 9/30/2012



Michael Wodarczyk

9/30/2012

Status: ☒ Y ☐ N ☐ U

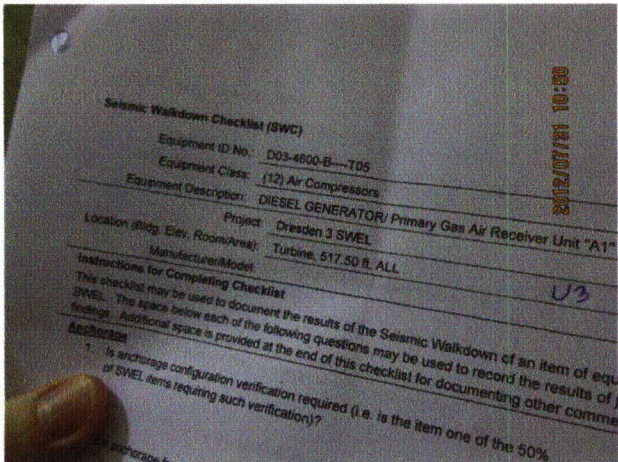
Seismic Walkdown Checklist (SWC)

Equipment ID No.: D03-4600-B---T05

Equipment Class: (12) Air Compressors

Equipment Description: DIESEL GENERATOR/ Primary Gas Air Receiver Unit "A1"

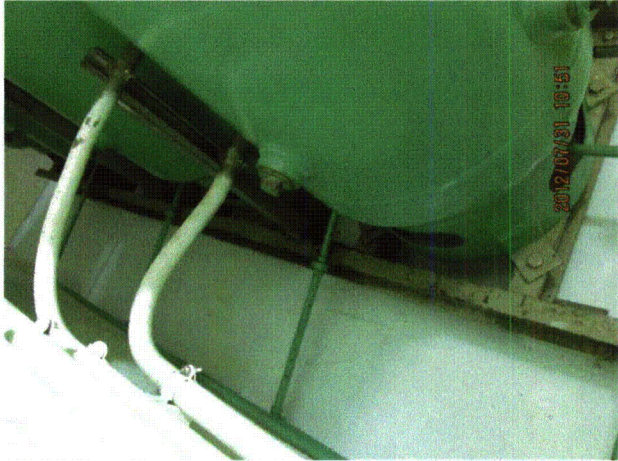
Photos



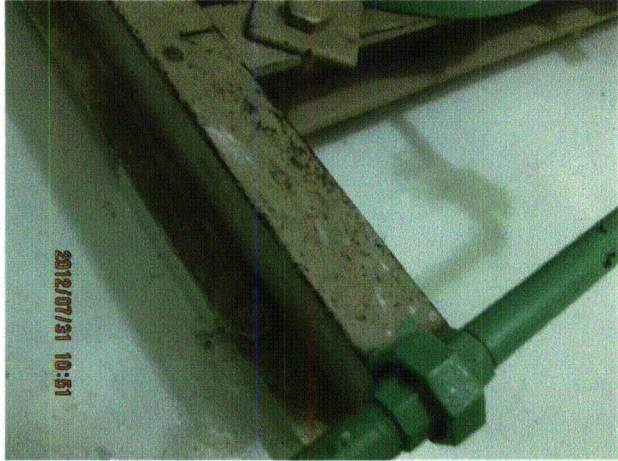
20120731-Dresden-3 237



20120731-Dresden-3 238



20120731-Dresden-3 239



20120731-Dresden-3 240

Status: ☒ Y ☐ N ☐ U

**Seismic Walkdown Checklist (SWC)**

Equipment ID No.: D03-4600-B----T05

Equipment Class: (12) Air Compressors

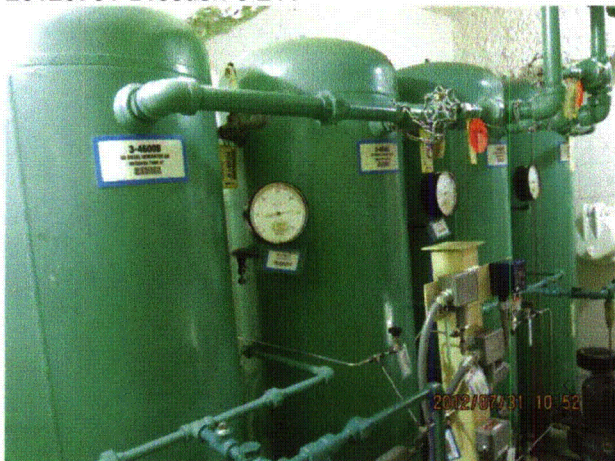
Equipment Description: DIESEL GENERATOR/ Primary Gas Air Receiver Unit "A1"



20120731-Dresden-3 241



20120731-Dresden-3 242



20120731-Dresden-3 243



20120731-Dresden-3 244

Status: ☒ Y ☐ N ☐ U

**Seismic Walkdown Checklist (SWC)**

Equipment ID No.: D03-4600-B----T05

Equipment Class: (12) Air Compressors

Equipment Description: DIESEL GENERATOR/ Primary Gas Air Receiver Unit "A1"



20120731-Dresden-3 245



20120731-Dresden-3 246



20120731-Dresden-3 247



20120731-Dresden-3 248

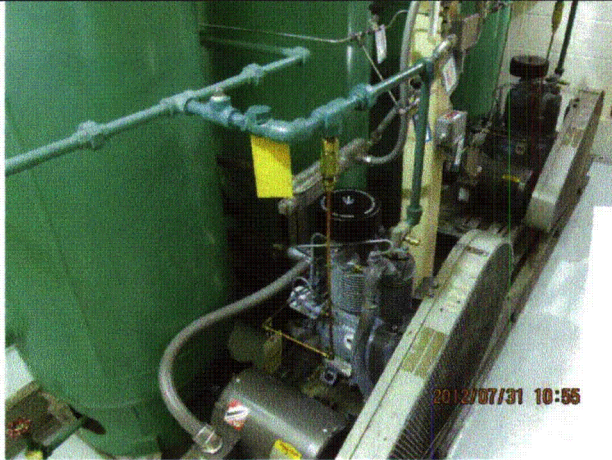
Status: ☒ Y ☐ N ☐ U

**Seismic Walkdown Checklist (SWC)**

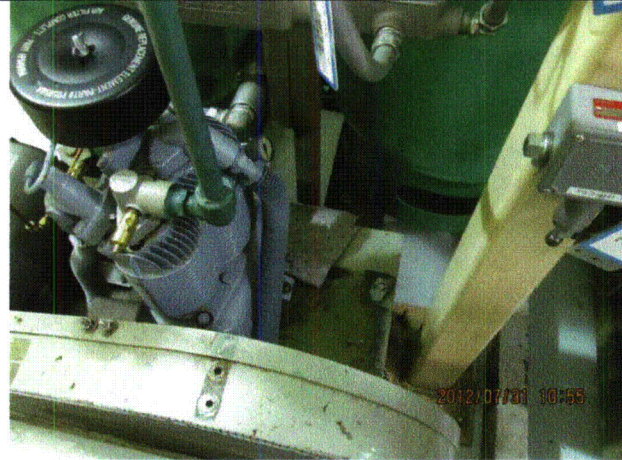
Equipment ID No.: D03-4600-B---T05

Equipment Class: (12) Air Compressors

Equipment Description: DIESEL GENERATOR/ Primary Gas Air Receiver Unit "A1"



20120731-Dresden-3 249



20120731-Dresden-3 250

Status: ☒ Y ☐ N ☐ U

**Seismic Walkdown Checklist (SWC)**

Equipment ID No.: D03-5202-----T05

Equipment Class: (21) Tanks and Heat Exchangers

Equipment Description: DIESEL GENERATOR/ Diesel Fuel Oil Storage Day Tank

Project: Dresden 3 SWEL

Location (Bldg, Elev, Room/Area): Turbine, 528.25 ft, ALL

Manufacturer/Model: \_\_\_\_\_

**Instructions for Completing Checklist**

This checklist may be used to document the results of the Seismic Walkdown of an item of equipment on the SWEL. The space below each of the following questions may be used to record the results of judgments and findings. Additional space is provided at the end of this checklist for documenting other comments.

**Anchorage**

1. Is anchorage configuration verification required (i.e., is the item one of the 50% of SWEL items requiring such verification)? Yes
2. Is the anchorage free of bent, broken, missing or loose hardware? Yes
3. Is the anchorage free of corrosion that is more than mild surface oxidation? Yes
4. Is the anchorage free of visible cracks in the concrete near the anchors? Yes  
*Minor shrinkage cracks in floor are judged to be acceptable.*
5. Is the anchorage configuration consistent with plant documentation? (Note: This question only applies if the item is one of the 50% for which an anchorage configuration verification is required.) Yes
6. Based on the above anchorage evaluations, is the anchorage free of potentially adverse seismic conditions? Yes

Status: ☒ Y ☐ N ☐ U

**Seismic Walkdown Checklist (SWC)**

Equipment ID No.: D03-5202-----T05

Equipment Class: (21) Tanks and Heat Exchangers

Equipment Description: DIESEL GENERATOR/ Diesel Fuel Oil Storage Day Tank

**Interaction Effects**

7. Are soft targets free from impact by nearby equipment or structures? Yes
8. Are overhead equipment, distribution systems, ceiling tiles and lighting, and masonry block walls not likely to collapse onto the equipment? Yes  
*Adjacent masonry wall is safety-related.*
9. Do attached lines have adequate flexibility to avoid damage? Yes
10. Based on the above seismic interaction evaluations, is equipment free of potentially adverse seismic interaction effects? Yes

**Other Adverse Conditions**

11. Have you looked for and found no adverse seismic conditions that could adversely affect the safety functions of the equipment? Yes

**Comments**

SEWS Anchorage Notes:

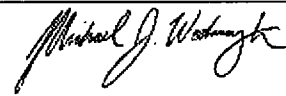
This 750 gal. capacity diesel fuel oil day tank is mounted on 2 saddles. Each saddle is anchored to 11" high concrete piers by 4 - 7/8" cast-in-place anchors.

\*\*\*\*\*

Seismic Walkdown Team: J. Griffith & M. Wodarczyk - 7/31/2012

Evaluated by:  James Griffith

Date: 9/30/2012



Michael Wodarczyk

9/30/2012

Status: ☒ Y ☐ N ☐ U

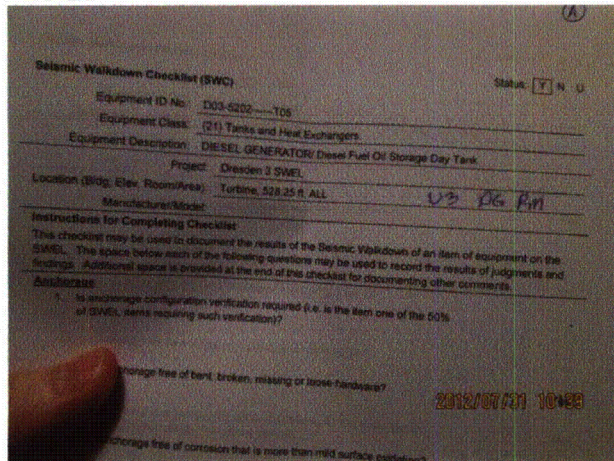
### Seismic Walkdown Checklist (SWC)

Equipment ID No.: D03-5202-----T05

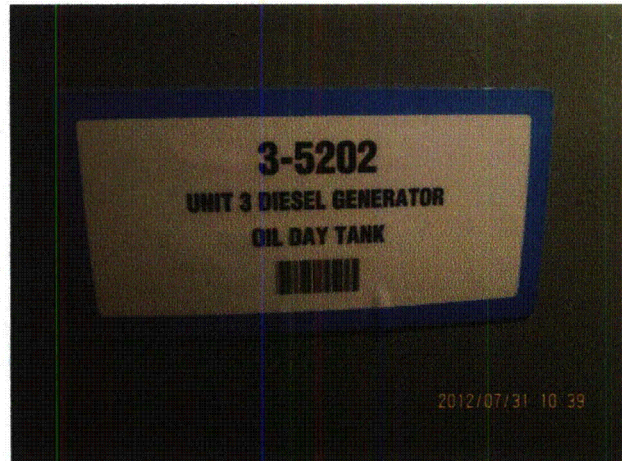
Equipment Class: (21) Tanks and Heat Exchangers

Equipment Description: DIESEL GENERATOR/ Diesel Fuel Oil Storage Day Tank

#### Photos



20120731-Dresden-3 220



20120731-Dresden-3 221



20120731-Dresden-3 222



20120731-Dresden-3 223

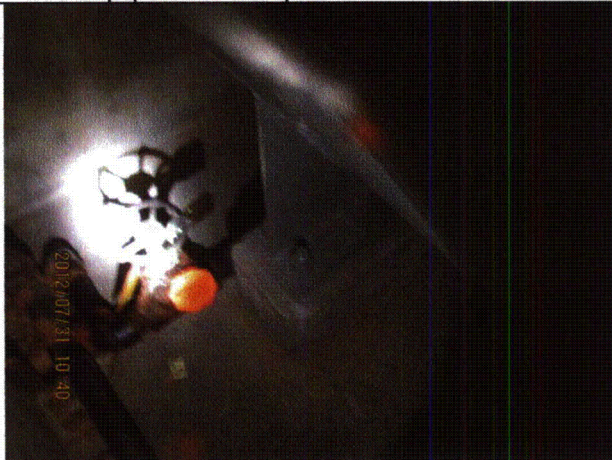
Status: ☒ Y ☐ N ☐ U

**Seismic Walkdown Checklist (SWC)**

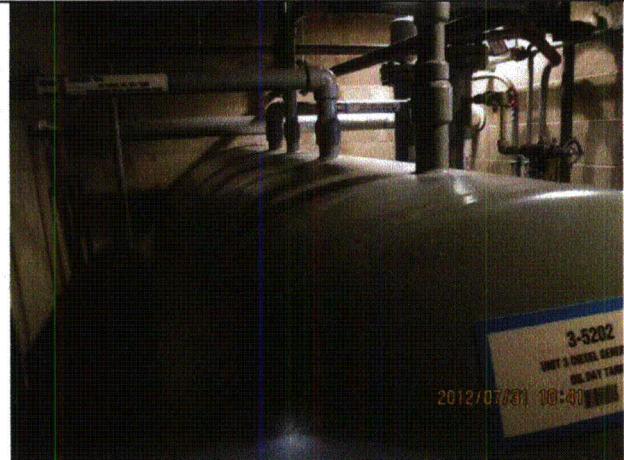
Equipment ID No.: D03-5202-----T05

Equipment Class: (21) Tanks and Heat Exchangers

Equipment Description: DIESEL GENERATOR/ Diesel Fuel Oil Storage Day Tank



20120731-Dresden-3 224



20120731-Dresden-3 225



20120731-Dresden-3 226



20120731-Dresden-3 227

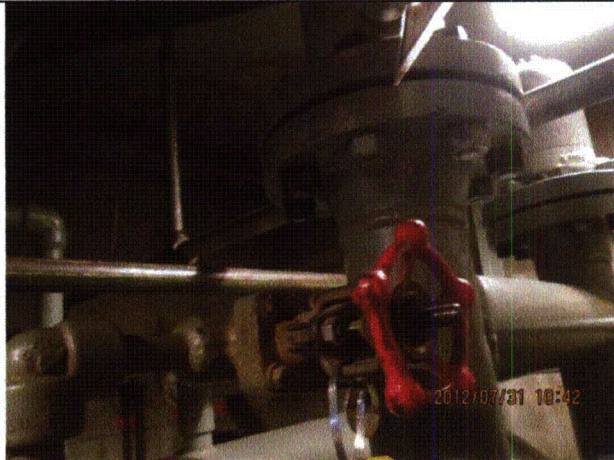
Status: ☒ Y ☐ N ☐ U

**Seismic Walkdown Checklist (SWC)**

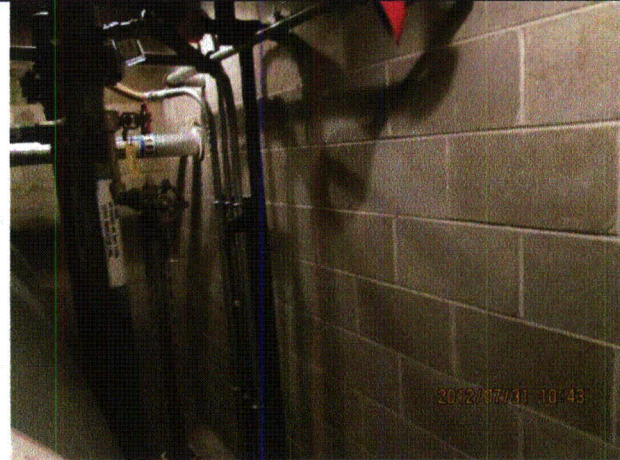
Equipment ID No.: D03-5202-----T05

Equipment Class: (21) Tanks and Heat Exchangers

Equipment Description: DIESEL GENERATOR/ Diesel Fuel Oil Storage Day Tank



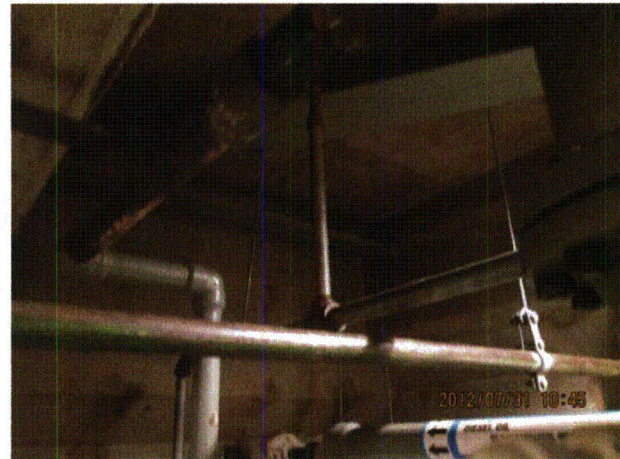
20120731-Dresden-3 228



20120731-Dresden-3 229



20120731-Dresden-3 230



20120731-Dresden-3 231

Status: ☒ Y ☐ N ☐ U

**Seismic Walkdown Checklist (SWC)**

Equipment ID No.: D03-5202-----T05

Equipment Class: (21) Tanks and Heat Exchangers

Equipment Description: DIESEL GENERATOR/ Diesel Fuel Oil Storage Day Tank



20120731-Dresden-3 232