

Status: ☒ Y ☐ N ☐ U

Seismic Walkdown Checklist (SWC)

Equipment ID No.: D03-1601-0024-V05

Equipment Class: (7) Fluid-Operated Valves

Equipment Description: PRESSURE SUPPRESSION/ Drywell and Torus Vent Valve

8. Are overhead equipment, distribution systems, ceiling tiles and lighting, and masonry block walls not likely to collapse onto the equipment? Yes
Overhead light fixtures judged to be acceptable. Adjacent masonry walls are safety-related.
9. Do attached lines have adequate flexibility to avoid damage? Yes
10. Based on the above seismic interaction evaluations, is equipment free of potentially adverse seismic interaction effects? Yes

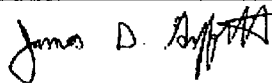
Other Adverse Conditions

11. Have you looked for and found no adverse seismic conditions that could adversely affect the safety functions of the equipment? Yes

Comments

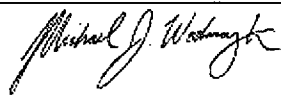
Seismic Walkdown Team: J. Griffith & M. Wodarczyk - 8/2/2012

Evaluated by:



James Griffith

Date: 9/30/2012



Michael Wodarczyk

9/30/2012

Status: ☒ Y ☐ N ☐ U

Seismic Walkdown Checklist (SWC)

Equipment ID No.: D03-1601-0024-V05

Equipment Class: (7) Fluid-Operated Valves

Equipment Description: PRESSURE SUPPRESSION/ Drywell and Torus Vent Valve

Photos

Seismic Walkdown Checklist (SWC)

Equipment ID No.: D03-1601-0024-V05

Equipment Class: (7) Fluid-Operated Valves

Equipment Description: PRESSURE SUPPRESSION/ Drywell and Torus Vent Valve

Project: Dresden 3 SWEL

Location (Bldg, Elev, Room/Area): Reactor, 570.00 ft. ALL K-46 OVERHEAD

Manufacturer/Model:

Instructions for Completing Checklist

This checklist may be used to document the results of the Seismic Walkdown of an item of equipment on the SWEL. The space below each of the following questions may be used to record the results of judgments and findings. Additional space is provided at the end of this checklist for documenting other comments.

1. Is anchorage configuration verification required (i.e. is the item one of the 50% of SWEL items requiring such verification)?

Not Applicable

20120802-Dresden-3 096



20120802-Dresden-3 097



20120802-Dresden-3 098



20120802-Dresden-3 099

Status: ☒ Y ☐ N ☐ U

Seismic Walkdown Checklist (SWC)

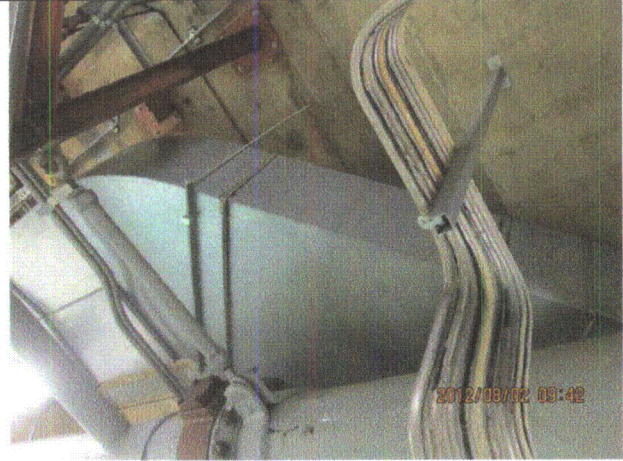
Equipment ID No.: D03-1601-0024-V05

Equipment Class: (7) Fluid-Operated Valves

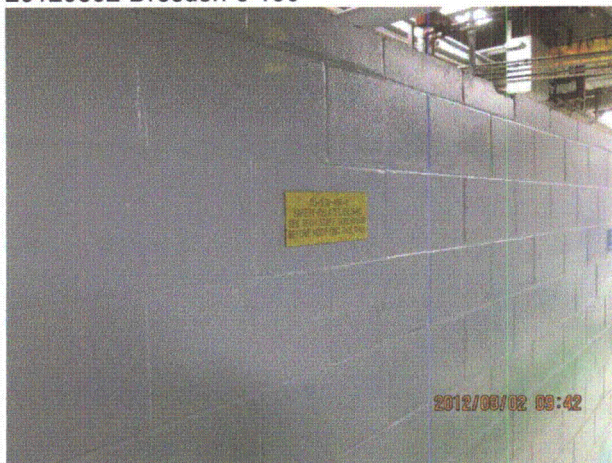
Equipment Description: PRESSURE SUPPRESSION/ Drywell and Torus Vent Valve



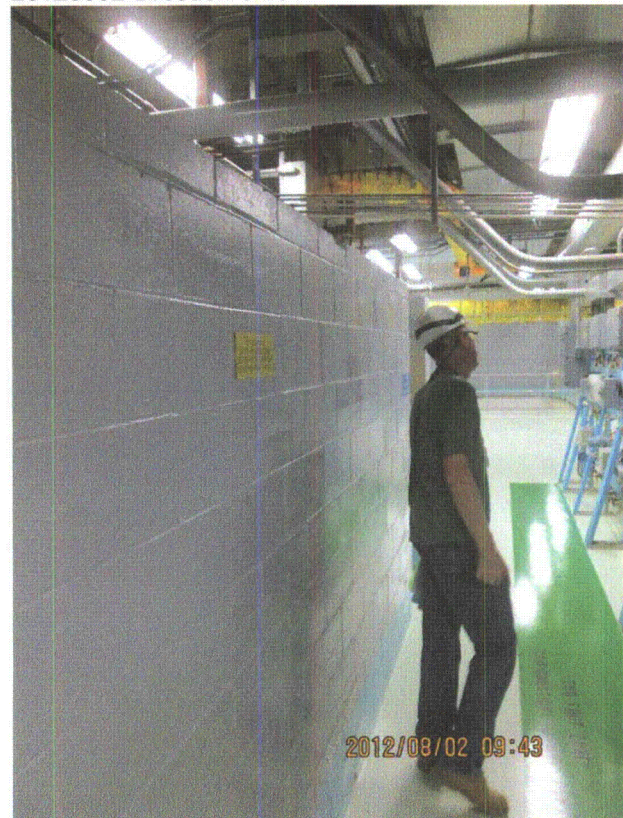
20120802-Dresden-3 100



20120802-Dresden-3 101



20120802-Dresden-3 102



20120802-Dresden-3 103

Status: ☒ Y ☐ N ☐ U

Seismic Walkdown Checklist (SWC)

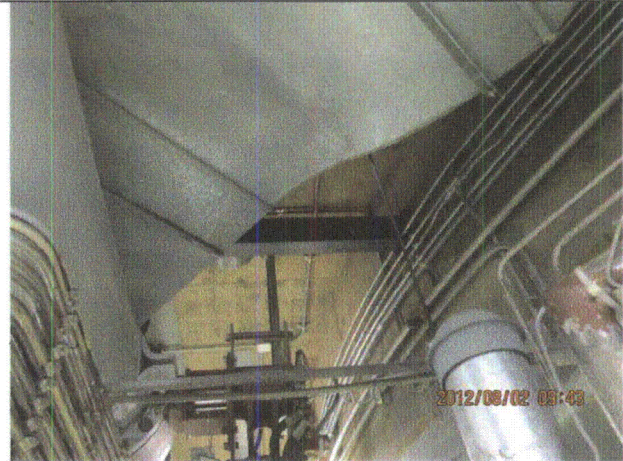
Equipment ID No.: D03-1601-0024-V05

Equipment Class: (7) Fluid-Operated Valves

Equipment Description: PRESSURE SUPPRESSION/ Drywell and Torus Vent Valve



20120802-Dresden-3 104



20120802-Dresden-3 105



20120802-Dresden-3 106



20120802-Dresden-3 107

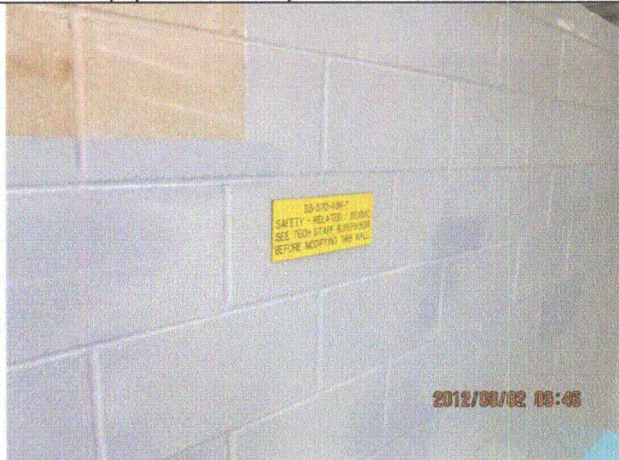
Status: ☒ Y ☐ N ☐ U

Seismic Walkdown Checklist (SWC)

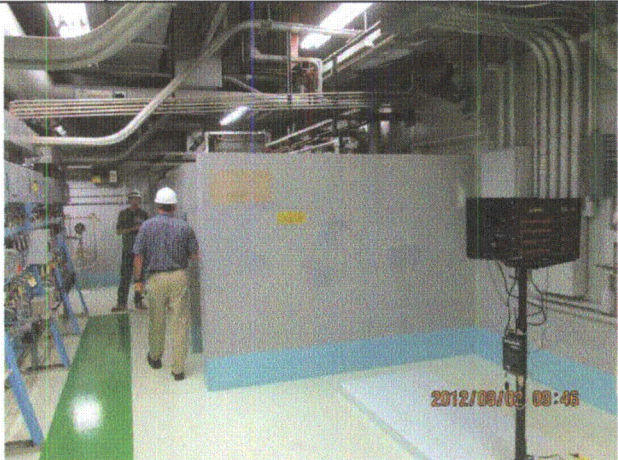
Equipment ID No.: D03-1601-0024-V05

Equipment Class: (7) Fluid-Operated Valves

Equipment Description: PRESSURE SUPPRESSION/ Drywell and Torus Vent Valve



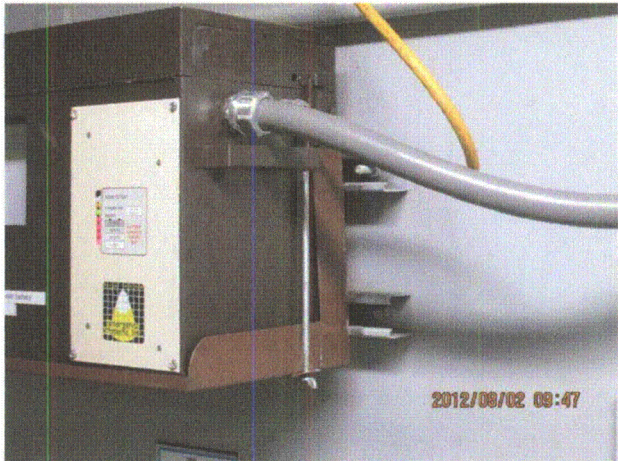
20120802-Dresden-3 108



20120802-Dresden-3 109



20120802-Dresden-3 110



20120802-Dresden-3 111

Status: ☒ Y ☐ N ☐ U

Seismic Walkdown Checklist (SWC)

Equipment ID No.: D03-1601-0024-V05

Equipment Class: (7) Fluid-Operated Valves

Equipment Description: PRESSURE SUPPRESSION/ Drywell and Torus Vent Valve



20120802-Dresden-3 112



20120802-Dresden-3 113



20120802-Dresden-3 114



20120802-Dresden-3 115

Status: ☒ Y ☐ N ☐ U

Seismic Walkdown Checklist (SWC)

Equipment ID No.: D03-1601-0057-V20

Equipment Class: (8) Motor-Operated and Solenoid-Operated Valves

Equipment Description: PRESSURE SUPPRESSION/ Drywell/Torus Nitr. Makeup Valve

Project: Dresden 3 SWEL

Location (Bldg, Elev, Room/Area): Reactor, 476.50 ft, ALL

Manufacturer/Model: _____

Instructions for Completing Checklist

This checklist may be used to document the results of the Seismic Walkdown of an item of equipment on the SWEL. The space below each of the following questions may be used to record the results of judgments and findings. Additional space is provided at the end of this checklist for documenting other comments.

Anchorage

- | | |
|--|----------------|
| 1. Is anchorage configuration verification required (i.e., is the item one of the 50% of SWEL items requiring such verification)? | No |
| 2. Is the anchorage free of bent, broken, missing or loose hardware? | Not Applicable |
| 3. Is the anchorage free of corrosion that is more than mild surface oxidation? | Not Applicable |
| 4. Is the anchorage free of visible cracks in the concrete near the anchors? | Not Applicable |
| 5. Is the anchorage configuration consistent with plant documentation? (Note: This question only applies if the item is one of the 50% for which an anchorage configuration verification is required.) | Not Applicable |
| 6. Based on the above anchorage evaluations, is the anchorage free of potentially adverse seismic conditions? | Yes |

Status: ☒ Y ☐ N ☐ U

Seismic Walkdown Checklist (SWC)

Equipment ID No.: D03-1601-0057-V20

Equipment Class: (8) Motor-Operated and Solenoid-Operated Valves

Equipment Description: PRESSURE SUPPRESSION/ Drywell/Torus Nitr. Makeup Valve

Interaction Effects

7. Are soft targets free from impact by nearby equipment or structures? Yes

Distance between valve handwheel and adjacent pipe judged to be acceptable.

8. Are overhead equipment, distribution systems, ceiling tiles and lighting, and masonry block walls not likely to collapse onto the equipment? Yes

9. Do attached lines have adequate flexibility to avoid damage? Yes

10. Based on the above seismic interaction evaluations, is equipment free of potentially adverse seismic interaction effects? Yes

Other Adverse Conditions

11. Have you looked for and found no adverse seismic conditions that could adversely affect the safety functions of the equipment? Yes

Comments

Seismic Walkdown Team: J. Griffith & M. Wodarczyk - 8/3/2012

Evaluated by: James D. Griffith James Griffith

Date: 9/30/2012

Michael J. Wodarczyk

Michael Wodarczyk

9/30/2012

Status: ☒ Y ☐ N ☐ U

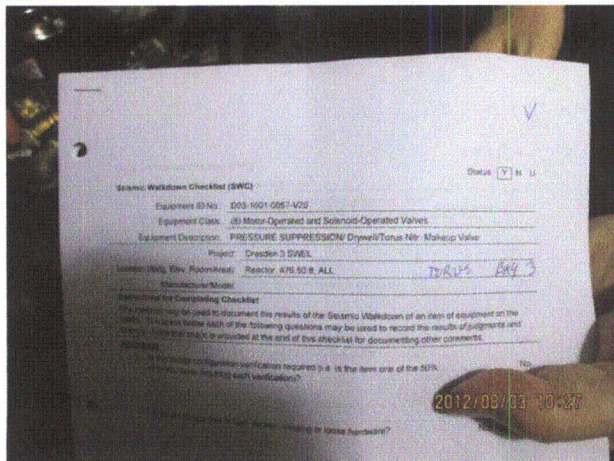
Seismic Walkdown Checklist (SWC)

Equipment ID No.: D03-1601-0057-V20

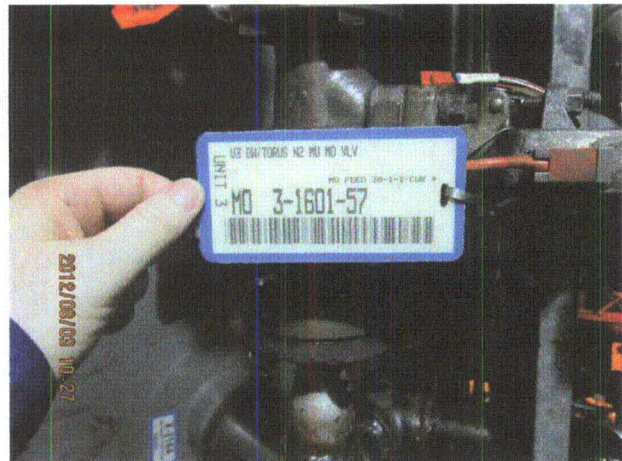
Equipment Class: (8) Motor-Operated and Solenoid-Operated Valves

Equipment Description: PRESSURE SUPPRESSION/ Drywell/Torus Nitr. Makeup Valve

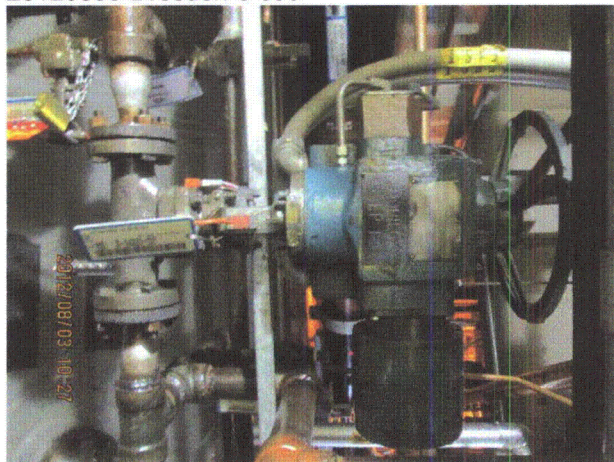
Photos



20120803-Dresden-3 099



20120803-Dresden-3 100



20120803-Dresden-3 101



20120803-Dresden-3 102

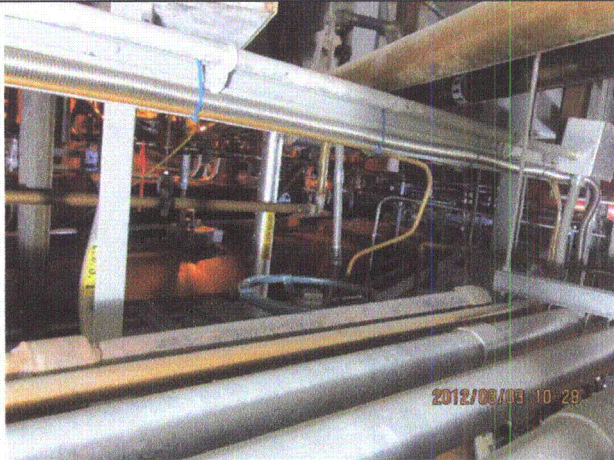
Status: ☒ Y ☐ N ☐ U

Seismic Walkdown Checklist (SWC)

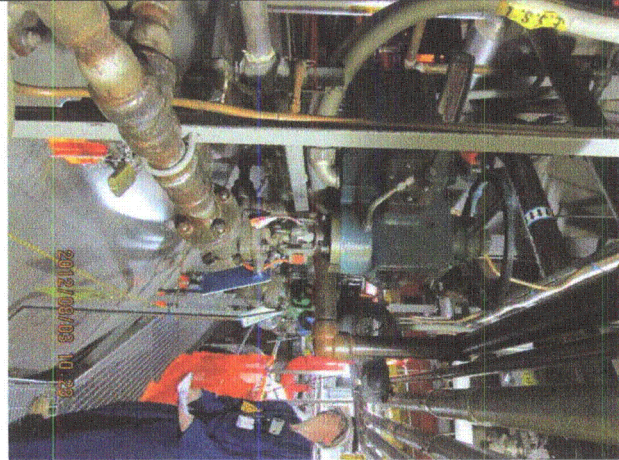
Equipment ID No.: D03-1601-0057-V20

Equipment Class: (8) Motor-Operated and Solenoid-Operated Valves

Equipment Description: PRESSURE SUPPRESSION/ Drywell/Torus Nitr. Makeup Valve



20120803-Dresden-3 103



20120803-Dresden-3 104



20120803-Dresden-3 105



20120803-Dresden-3 106

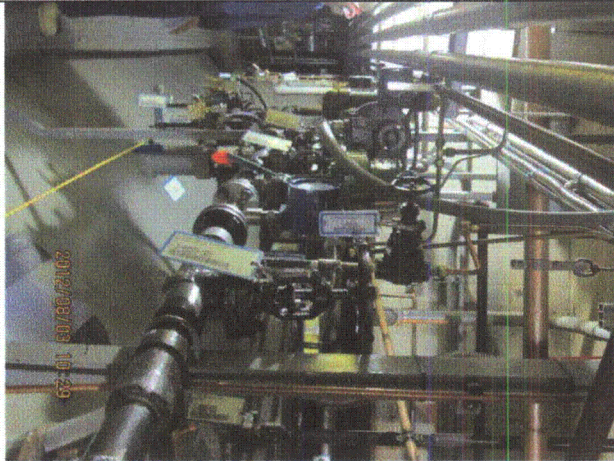
Status: ☒ Y ☐ N ☐ U

Seismic Walkdown Checklist (SWC)

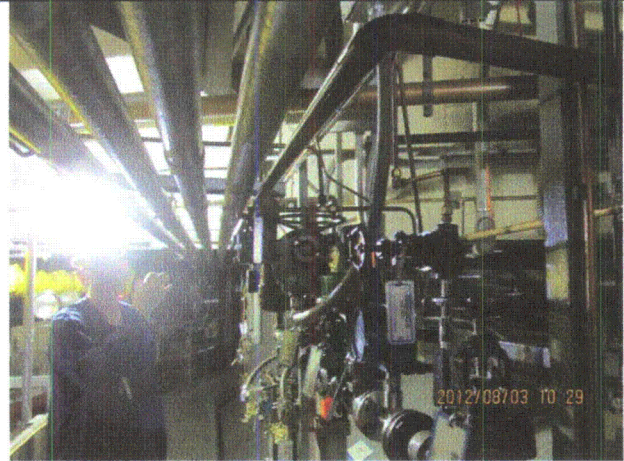
Equipment ID No.: D03-1601-0057-V20

Equipment Class: (8) Motor-Operated and Solenoid-Operated Valves

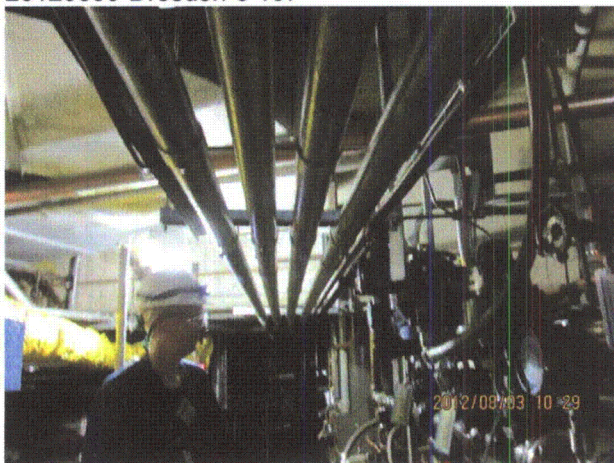
Equipment Description: PRESSURE SUPPRESSION/ Drywell/Torus Nitr. Makeup Valve



20120803-Dresden-3 107



20120803-Dresden-3 108



20120803-Dresden-3 109



20120803-Dresden-3 110

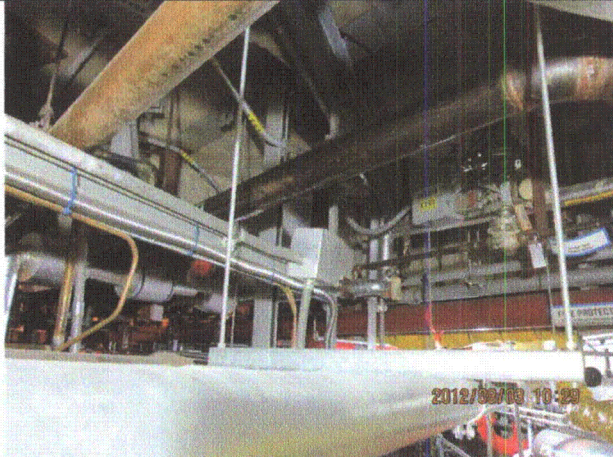
Status: ☒ Y ☐ N ☐ U

Seismic Walkdown Checklist (SWC)

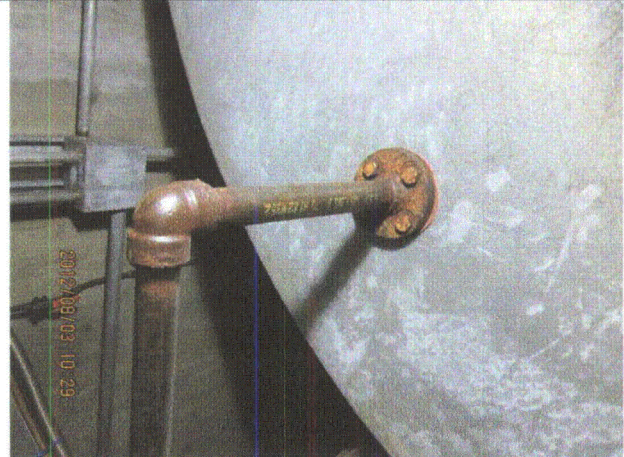
Equipment ID No.: D03-1601-0057-V20

Equipment Class: (8) Motor-Operated and Solenoid-Operated Valves

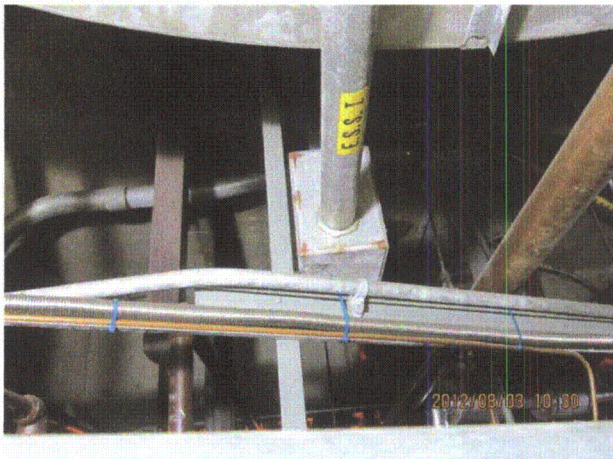
Equipment Description: PRESSURE SUPPRESSION/ Drywell/Torus Nitr. Makeup Valve



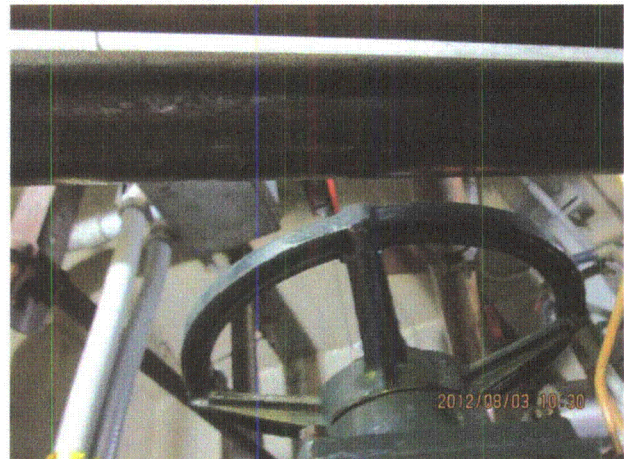
20120803-Dresden-3 111



20120803-Dresden-3 112



20120803-Dresden-3 113



20120803-Dresden-3 114

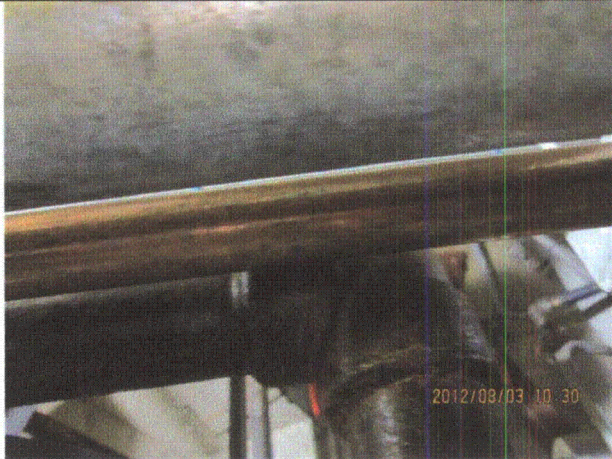
Status: ☒ Y ☐ N ☐ U

Seismic Walkdown Checklist (SWC)

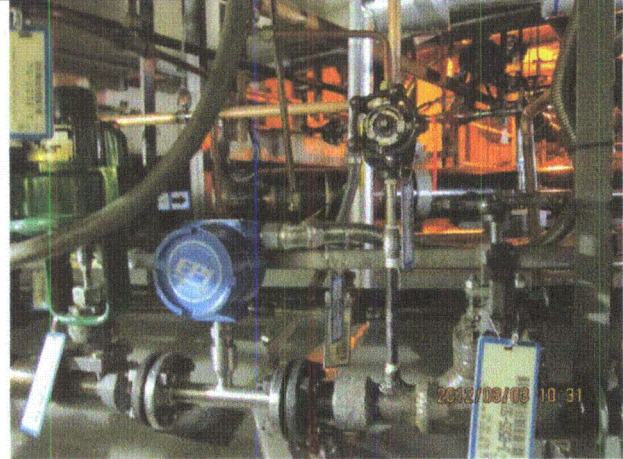
Equipment ID No.: D03-1601-0057-V20

Equipment Class: (8) Motor-Operated and Solenoid-Operated Valves

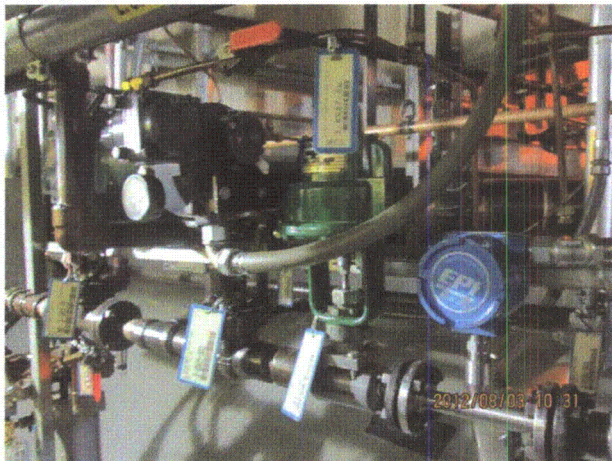
Equipment Description: PRESSURE SUPPRESSION/ Drywell/Torus Nitr. Makeup Valve



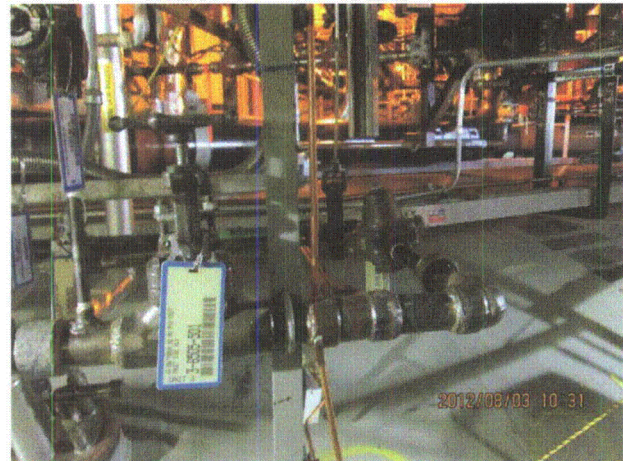
20120803-Dresden-3 115



20120803-Dresden-3 116



20120803-Dresden-3 117



20120803-Dresden-3 118

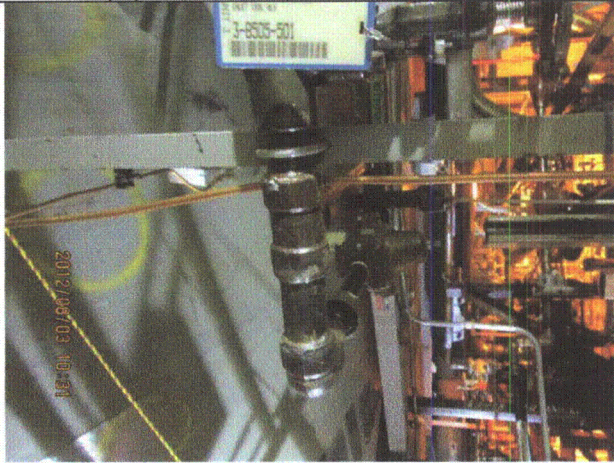
Status: ☒ Y ☐ N ☐ U

Seismic Walkdown Checklist (SWC)

Equipment ID No.: D03-1601-0057-V20

Equipment Class: (8) Motor-Operated and Solenoid-Operated Valves

Equipment Description: PRESSURE SUPPRESSION/ Drywell/Torus Nitr. Makeup Valve



20120803-Dresden-3 119

Status: ☒ Y ☐ N ☐ U

Seismic Walkdown Checklist (SWC)

Equipment ID No.: D03-1601-0062-V05

Equipment Class: (7) Fluid-Operated Valves

Equipment Description: PRESSURE SUPPRESSION/ Drywell Ventilation Line Valve

Project: Dresden 3 SWEL

Location (Bldg, Elev, Room/Area): Reactor, 570.00 ft, ALL

Manufacturer/Model: _____

Instructions for Completing Checklist

This checklist may be used to document the results of the Seismic Walkdown of an item of equipment on the SWEL. The space below each of the following questions may be used to record the results of judgments and findings. Additional space is provided at the end of this checklist for documenting other comments.

Anchorage

- | | | |
|----|---|----------------|
| 1. | Is anchorage configuration verification required (i.e., is the item one of the 50% of SWEL items requiring such verification)? | No |
| 2. | Is the anchorage free of bent, broken, missing or loose hardware? | Not Applicable |
| 3. | Is the anchorage free of corrosion that is more than mild surface oxidation? | Not Applicable |
| 4. | Is the anchorage free of visible cracks in the concrete near the anchors? | Not Applicable |
| 5. | Is the anchorage configuration consistent with plant documentation? (Note: This question only applies if the item is one of the 50% for which an anchorage configuration verification is required.) | Not Applicable |
| 6. | Based on the above anchorage evaluations, is the anchorage free of potentially adverse seismic conditions? | Yes |

Status: ☒ Y ☐ N ☐ U

Seismic Walkdown Checklist (SWC)

Equipment ID No.: D03-1601-0062-V05

Equipment Class: (7) Fluid-Operated Valves

Equipment Description: PRESSURE SUPPRESSION/ Drywell Ventilation Line Valve

Interaction Effects

- | | |
|---|-----|
| 7. Are soft targets free from impact by nearby equipment or structures? | Yes |
| 8. Are overhead equipment, distribution systems, ceiling tiles and lighting, and masonry block walls not likely to collapse onto the equipment? | Yes |
| 9. Do attached lines have adequate flexibility to avoid damage? | Yes |
| 10. Based on the above seismic interaction evaluations, is equipment free of potentially adverse seismic interaction effects? | Yes |

Other Adverse Conditions

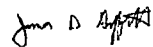
- | | |
|--|-----|
| 11. Have you looked for and found no adverse seismic conditions that could adversely affect the safety functions of the equipment? | Yes |
|--|-----|

Comments

Seismic Walkdown Team: J. Griffith & M. Wodarczyk - 8/2/2012

For photographs, see SWC for D03-1601-0023-V05.

Evaluated by:



James Griffith

Date: 10/24/2012



Michael Wodarczyk

10/24/2012

Photos

Status: ☒ Y ☐ N ☐ U

Seismic Walkdown Checklist (SWC)

Equipment ID No.: D03-1601-0063-V05

Equipment Class: (7) Fluid-Operated Valves

Equipment Description: PRESSURE SUPPRESSION/ Containment to SBT Line Valve

Project: Dresden 3 SWEL

Location (Bldg, Elev, Room/Area): Reactor, 570.00 ft, ALL

Manufacturer/Model: _____

Instructions for Completing Checklist

This checklist may be used to document the results of the Seismic Walkdown of an item of equipment on the SWEL. The space below each of the following questions may be used to record the results of judgments and findings. Additional space is provided at the end of this checklist for documenting other comments.

Anchorage

- | | |
|--|----------------|
| 1. Is anchorage configuration verification required (i.e., is the item one of the 50% of SWEL items requiring such verification)? | No |
| 2. Is the anchorage free of bent, broken, missing or loose hardware? | Not Applicable |
| 3. Is the anchorage free of corrosion that is more than mild surface oxidation? | Not Applicable |
| 4. Is the anchorage free of visible cracks in the concrete near the anchors? | Not Applicable |
| 5. Is the anchorage configuration consistent with plant documentation? (Note: This question only applies if the item is one of the 50% for which an anchorage configuration verification is required.) | Not Applicable |
| 6. Based on the above anchorage evaluations, is the anchorage free of potentially adverse seismic conditions? | Yes |

Status: ☒ Y ☐ N ☐ U

Seismic Walkdown Checklist (SWC)

Equipment ID No.: D03-1601-0063-V05

Equipment Class: (7) Fluid-Operated Valves

Equipment Description: PRESSURE SUPPRESSION/ Containment to SBT Line Valve

Interaction Effects

- | | |
|---|-----|
| 7. Are soft targets free from impact by nearby equipment or structures? | Yes |
| 8. Are overhead equipment, distribution systems, ceiling tiles and lighting, and masonry block walls not likely to collapse onto the equipment? | Yes |
| 9. Do attached lines have adequate flexibility to avoid damage? | Yes |
| 10. Based on the above seismic interaction evaluations, is equipment free of potentially adverse seismic interaction effects? | Yes |

Other Adverse Conditions

- | | |
|--|-----|
| 11. Have you looked for and found no adverse seismic conditions that could adversely affect the safety functions of the equipment? | Yes |
|--|-----|

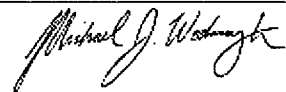
Comments

Seismic Walkdown Team: J. Griffith & M. Wodarczyk - 8/2/2012

Evaluated by:

 James Griffith

Date: 9/30/2012



Michael Wodarczyk

9/30/2012

Status: ☒ Y ☐ N ☐ U

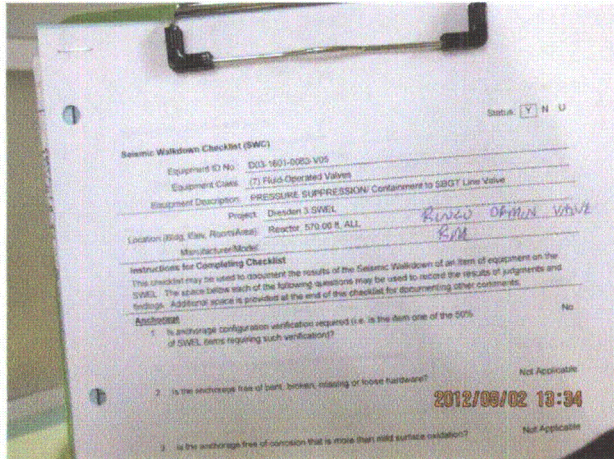
Seismic Walkdown Checklist (SWC)

Equipment ID No.: D03-1601-0063-V05

Equipment Class: (7) Fluid-Operated Valves

Equipment Description: PRESSURE SUPPRESSION/ Containment to SBTG Line Valve

Photos



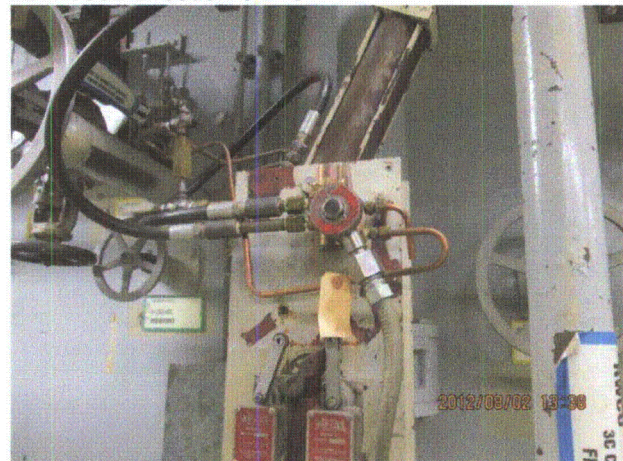
20120802-Dresden-3 217



20120802-Dresden-3 218



20120802-Dresden-3 219



20120802-Dresden-3 220

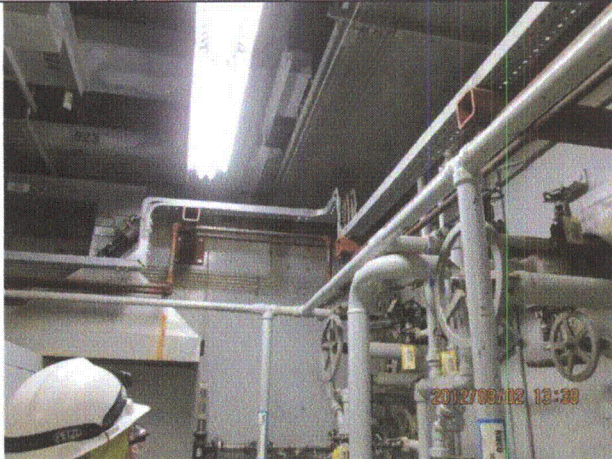
Status: ☒ Y ☐ N ☐ U

Seismic Walkdown Checklist (SWC)

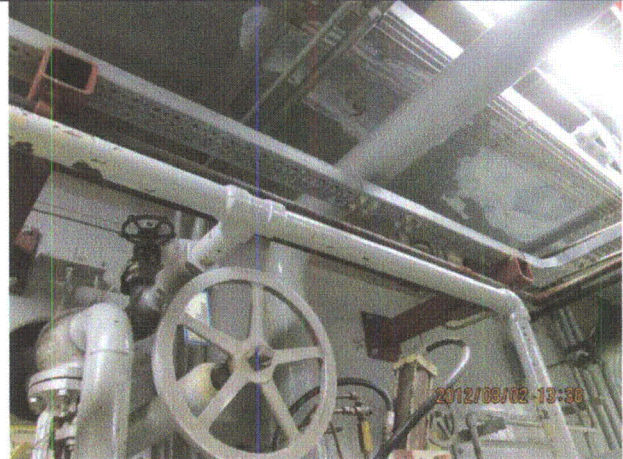
Equipment ID No.: D03-1601-0063-V05

Equipment Class: (7) Fluid-Operated Valves

Equipment Description: PRESSURE SUPPRESSION/ Containment to SGBT Line Valve



20120802-Dresden-3 221



20120802-Dresden-3 222



20120802-Dresden-3 223



20120802-Dresden-3 224

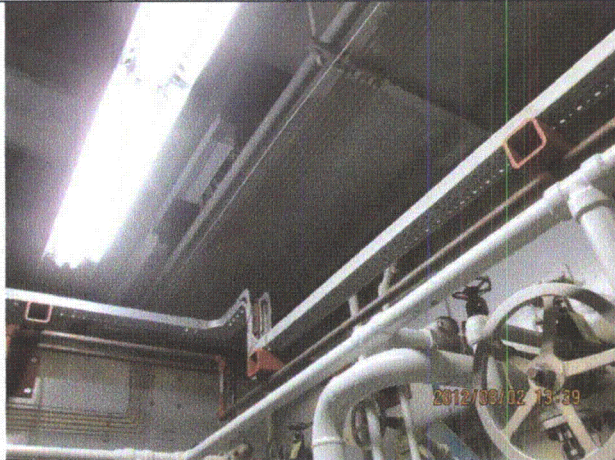
Status: ☒ Y ☐ N ☐ U

Seismic Walkdown Checklist (SWC)

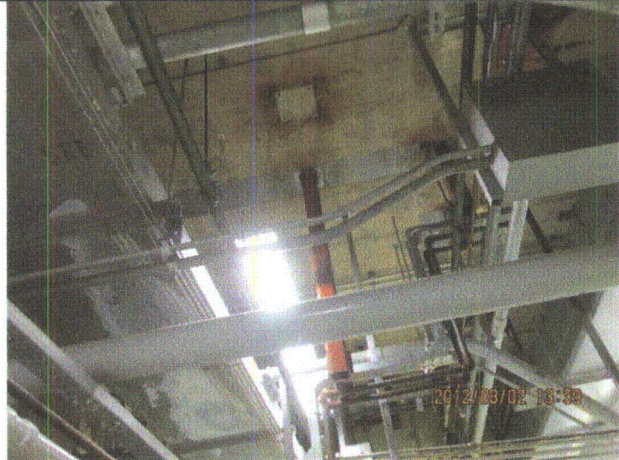
Equipment ID No.: D03-1601-0063-V05

Equipment Class: (7) Fluid-Operated Valves

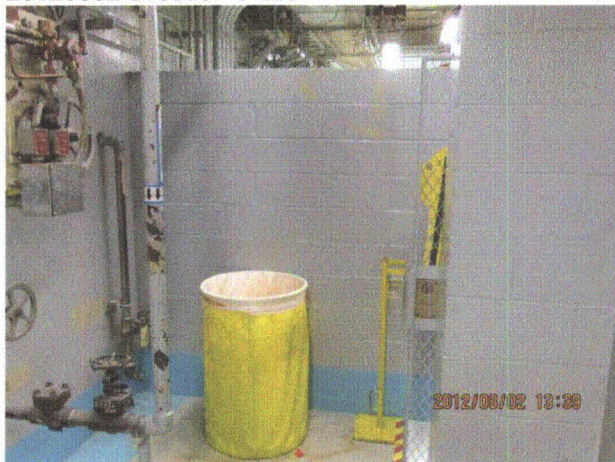
Equipment Description: PRESSURE SUPPRESSION/ Containment to SBT Line Valve



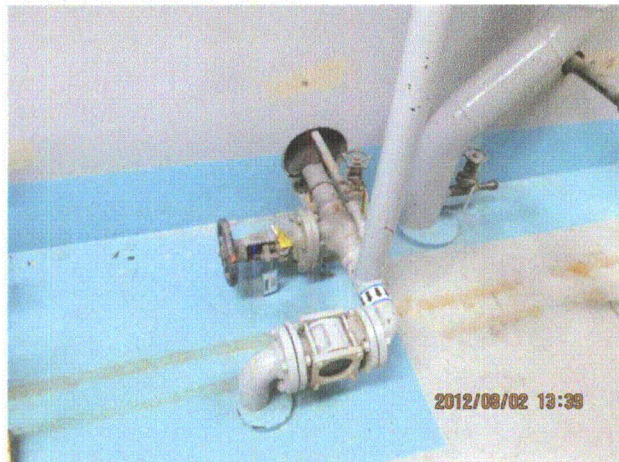
20120802-Dresden-3 225



20120802-Dresden-3 226



20120802-Dresden-3 227



20120802-Dresden-3 228

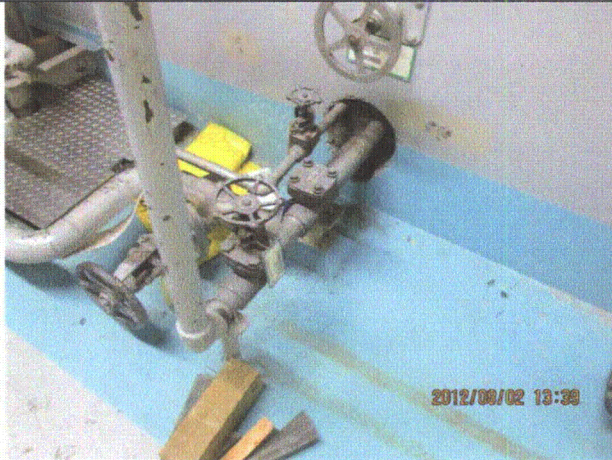
Status: ☒ Y ☐ N ☐ U

Seismic Walkdown Checklist (SWC)

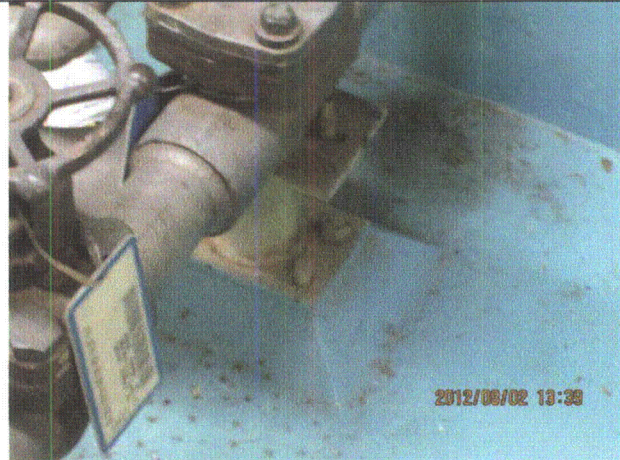
Equipment ID No.: D03-1601-0063-V05

Equipment Class: (7) Fluid-Operated Valves

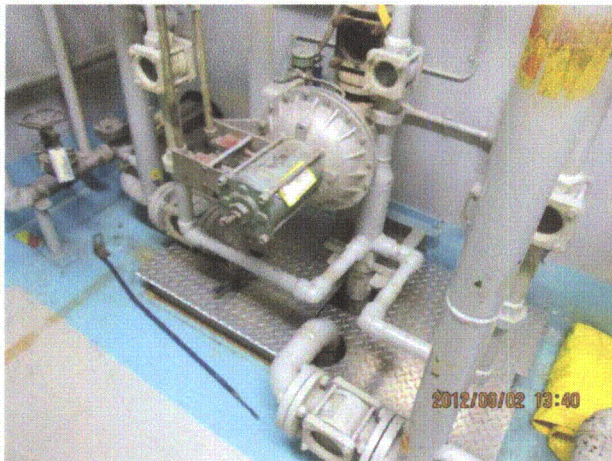
Equipment Description: PRESSURE SUPPRESSION/ Containment to SGBT Line Valve



20120802-Dresden-3 229



20120802-Dresden-3 230



20120802-Dresden-3 231



20120802-Dresden-3 232

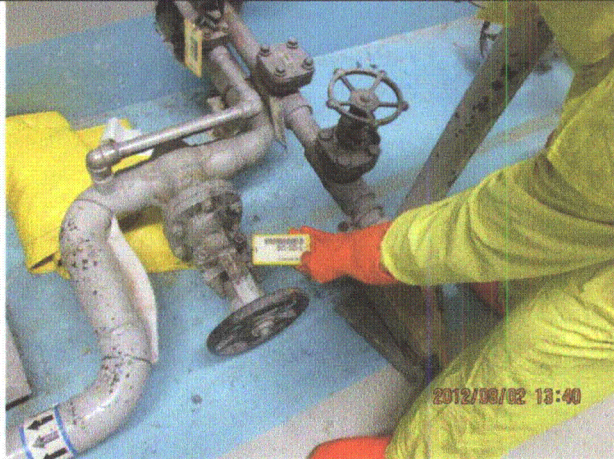
Status: ☒ Y ☐ N ☐ U

Seismic Walkdown Checklist (SWC)

Equipment ID No.: D03-1601-0063-V05

Equipment Class: (7) Fluid-Operated Valves

Equipment Description: PRESSURE SUPPRESSION/ Containment to SBT Line Valve



20120802-Dresden-3 233



20120802-Dresden-3 234

Status: ☒ Y ☐ N ☐ U

Seismic Walkdown Checklist (SWC)

Equipment ID No.: D03-1601-0063-V05

Equipment Class: (7) Fluid-Operated Valves

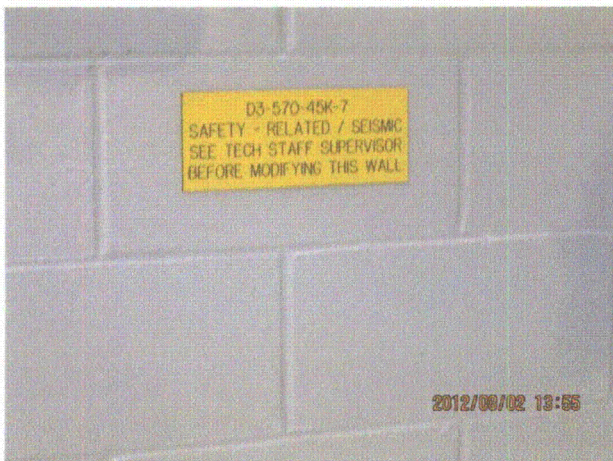
Equipment Description: PRESSURE SUPPRESSION/ Containment to SGBT Line Valve



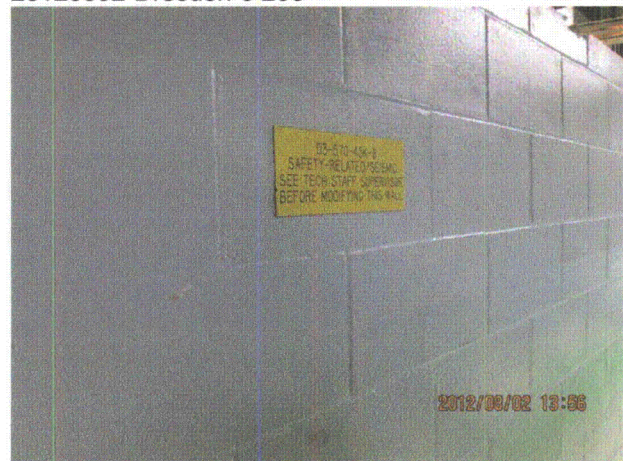
20120802-Dresden-3 235



20120802-Dresden-3 236



20120802-Dresden-3 237



20120802-Dresden-3 238

Status: ☒ Y ☐ N ☐ U

Seismic Walkdown Checklist (SWC)

Equipment ID No.: D03-2203-0006

Equipment Class: (18) Instruments on Racks

Equipment Description: INSTRUMENT RACKS/ Instrument Rack 2203-6

Project: Dresden 3 SWEL

Location (Bldg, Elev, Room/Area): Reactor, 545.50 ft, ALL

Manufacturer/Model: _____

Instructions for Completing Checklist

This checklist may be used to document the results of the Seismic Walkdown of an item of equipment on the SWEL. The space below each of the following questions may be used to record the results of judgments and findings. Additional space is provided at the end of this checklist for documenting other comments.

Anchorage

1. Is anchorage configuration verification required (i.e., is the item one of the 50% of SWEL items requiring such verification)? Yes

2. Is the anchorage free of bent, broken, missing or loose hardware? Yes

3. Is the anchorage free of corrosion that is more than mild surface oxidation? Yes

4. Is the anchorage free of visible cracks in the concrete near the anchors? Yes

5. Is the anchorage configuration consistent with plant documentation? (Note: This question only applies if the item is one of the 50% for which an anchorage configuration verification is required.) Yes

6. Based on the above anchorage evaluations, is the anchorage free of potentially adverse seismic conditions? Yes

Status: ☒ Y ☐ N ☐ U

Seismic Walkdown Checklist (SWC)

Equipment ID No.: D03-2203-0006

Equipment Class: (18) Instruments on Racks

Equipment Description: INSTRUMENT RACKS/ Instrument Rack 2203-6

Interaction Effects

- | | |
|---|-----|
| 7. Are soft targets free from impact by nearby equipment or structures? | Yes |
| 8. Are overhead equipment, distribution systems, ceiling tiles and lighting, and masonry block walls not likely to collapse onto the equipment?
<i>Light fixtures judged to be acceptable. Adjacent masonry wall is safety-related (No. 42, Drawing B-1709, Rev. A).</i> | Yes |
| 9. Do attached lines have adequate flexibility to avoid damage? | Yes |
| 10. Based on the above seismic interaction evaluations, is equipment free of potentially adverse seismic interaction effects? | Yes |

Other Adverse Conditions

- | | |
|--|-----|
| 11. Have you looked for and found no adverse seismic conditions that could adversely affect the safety functions of the equipment? | Yes |
|--|-----|

Comments

SEWS Anchorage Notes:

Anchored by 10 - 3/8" concrete expansion anchors and braced back to reinforced concrete wall by 3 large braces and to floor by 4 knee-braces.

Seismic Walkdown Team: J. Griffith & M. Wodarczyk - 8/2/2012

Evaluated by:  James Griffith

Date: 9/30/2012



Michael Wodarczyk

9/30/2012

Status: ☒ Y ☐ N ☐ U

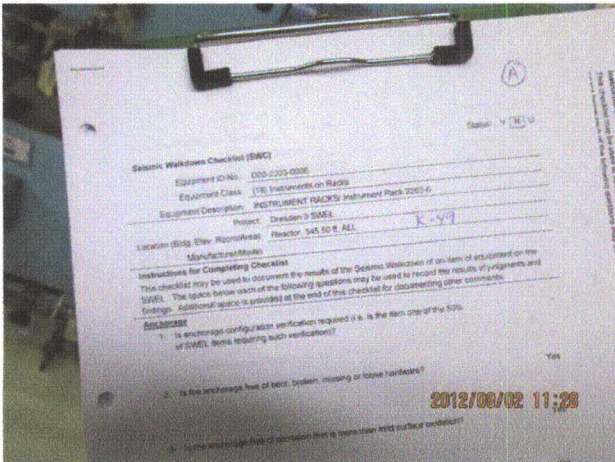
Seismic Walkdown Checklist (SWC)

Equipment ID No.: D03-2203-0006

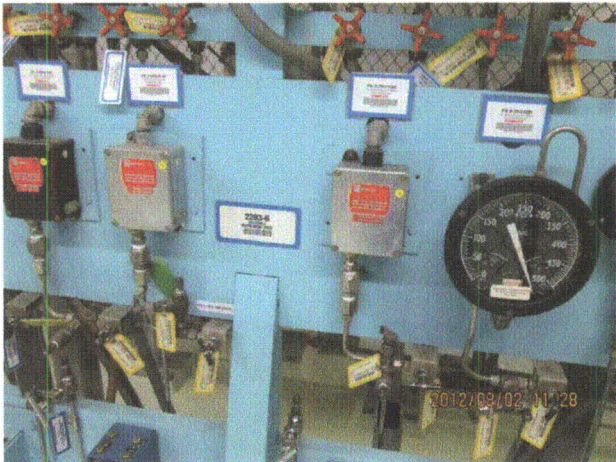
Equipment Class: (18) Instruments on Racks

Equipment Description: INSTRUMENT RACKS/ Instrument Rack 2203-6

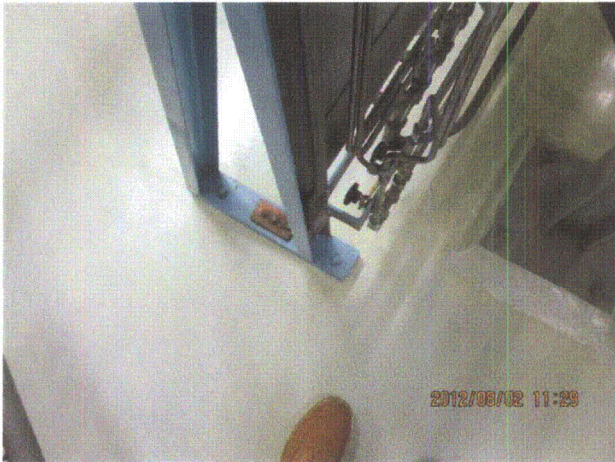
Photos



20120802-Dresden-3 181



20120802-Dresden-3 182



20120802-Dresden-3 183



20120802-Dresden-3 184

Status: ☒ Y ☐ N ☐ U

Seismic Walkdown Checklist (SWC)

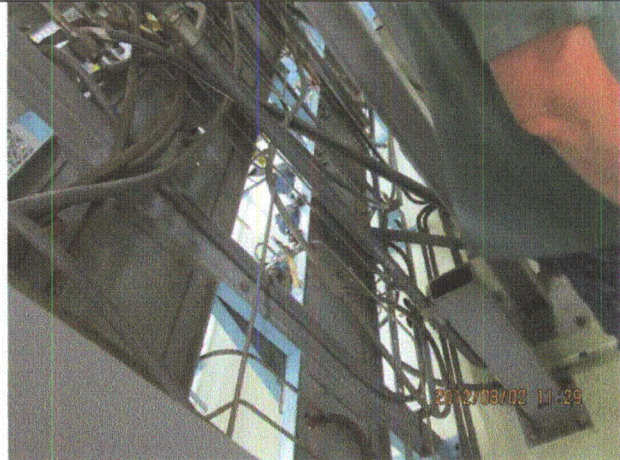
Equipment ID No.: D03-2203-0006

Equipment Class: (18) Instruments on Racks

Equipment Description: INSTRUMENT RACKS/ Instrument Rack 2203-6



20120802-Dresden-3 185



20120802-Dresden-3 186



20120802-Dresden-3 187



20120802-Dresden-3 188

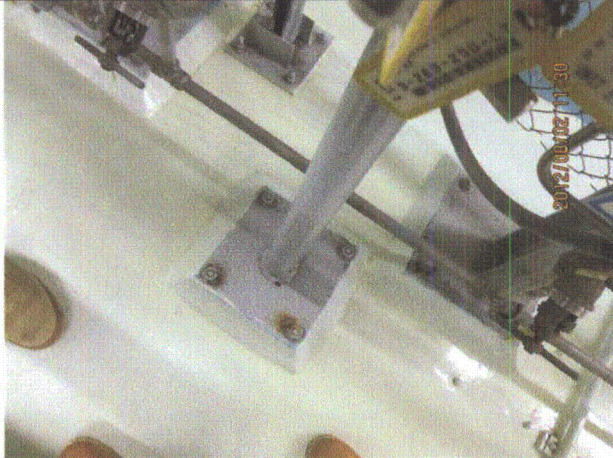
Status: ☒ Y ☐ N ☐ U

Seismic Walkdown Checklist (SWC)

Equipment ID No.: D03-2203-0006

Equipment Class: (18) Instruments on Racks

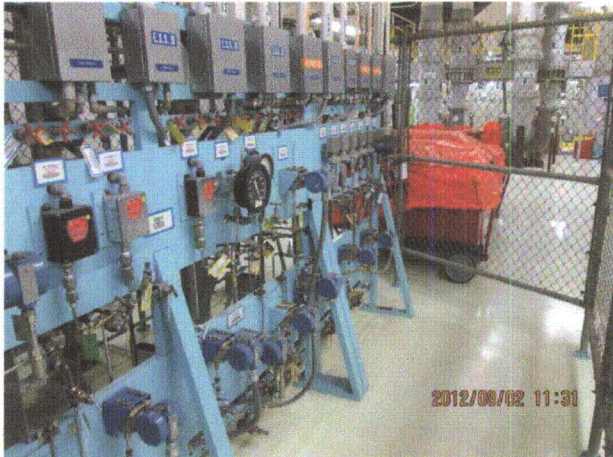
Equipment Description: INSTRUMENT RACKS/ Instrument Rack 2203-6



20120802-Dresden-3 189



20120802-Dresden-3 190



20120802-Dresden-3 191



20120802-Dresden-3 192

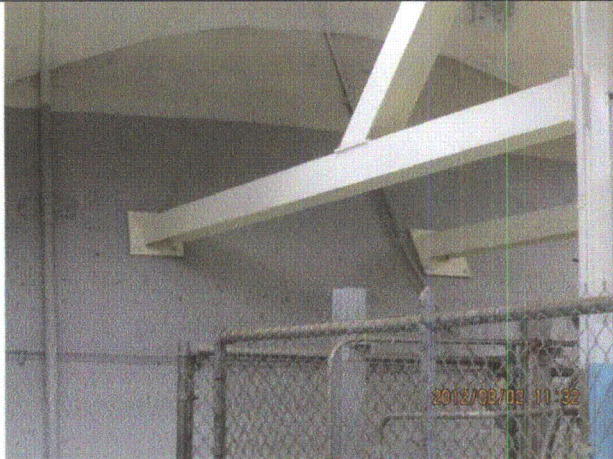
Status: ☒ Y ☐ N ☐ U

Seismic Walkdown Checklist (SWC)

Equipment ID No.: D03-2203-0006

Equipment Class: (18) Instruments on Racks

Equipment Description: INSTRUMENT RACKS/ Instrument Rack 2203-6



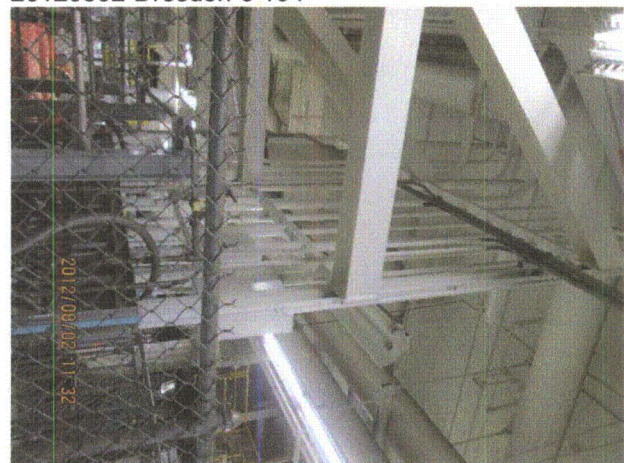
20120802-Dresden-3 193



20120802-Dresden-3 194



20120802-Dresden-3 195



20120802-Dresden-3 196

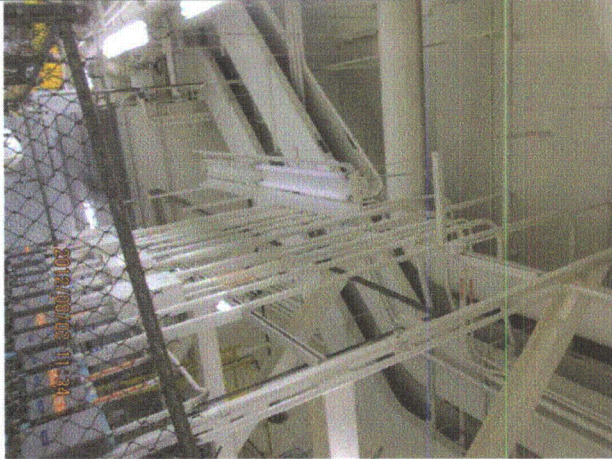
Status: ☒ Y ☐ N ☐ U

Seismic Walkdown Checklist (SWC)

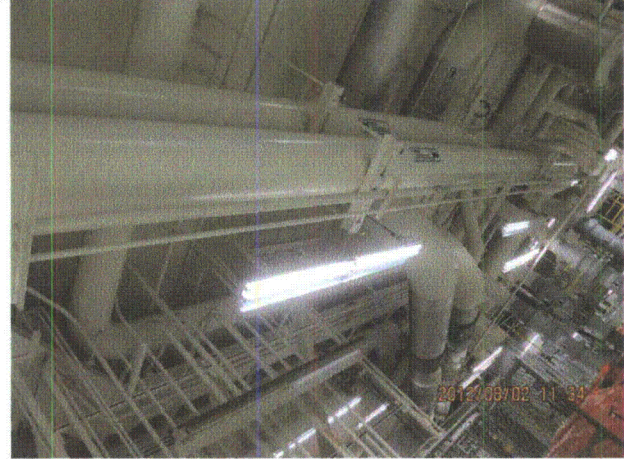
Equipment ID No.: D03-2203-0006

Equipment Class: (18) Instruments on Racks

Equipment Description: INSTRUMENT RACKS/ Instrument Rack 2203-6



20120802-Dresden-3 197



20120802-Dresden-3 198



20120802-Dresden-3 199



20120802-Dresden-3 200

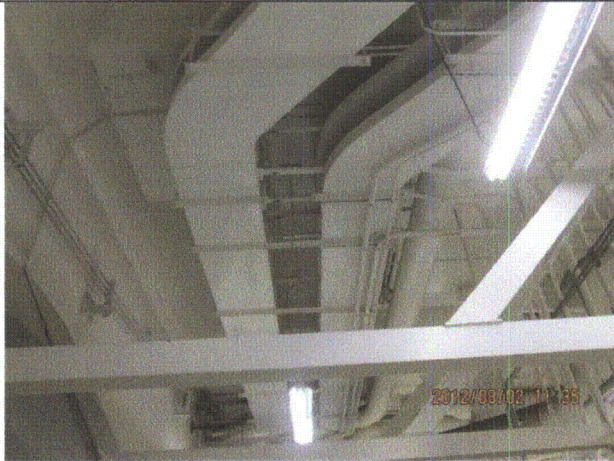
Status: ☒ Y ☐ N ☐ U

Seismic Walkdown Checklist (SWC)

Equipment ID No.: D03-2203-0006

Equipment Class: (18) Instruments on Racks

Equipment Description: INSTRUMENT RACKS/ Instrument Rack 2203-6



20120802-Dresden-3 201



20120802-Dresden-3 202

Status: ☒ Y ☐ N ☐ U

Seismic Walkdown Checklist (SWC)

Equipment ID No.: D03-2203-0008

Equipment Class: (18) Instruments on Racks

Equipment Description: INSTRUMENT RACKS/ Instrument Rack 2203-8

Project: Dresden 3 SWEL

Location (Bldg, Elev, Room/Area): Reactor, 517.50 ft, ALL

Manufacturer/Model: _____

Instructions for Completing Checklist

This checklist may be used to document the results of the Seismic Walkdown of an item of equipment on the SWEL. The space below each of the following questions may be used to record the results of judgments and findings. Additional space is provided at the end of this checklist for documenting other comments.

Anchorage

1. Is anchorage configuration verification required (i.e., is the item one of the 50% of SWEL items requiring such verification)? Yes
2. Is the anchorage free of bent, broken, missing or loose hardware? Yes
3. Is the anchorage free of corrosion that is more than mild surface oxidation? Yes
4. Is the anchorage free of visible cracks in the concrete near the anchors? Yes
Minor shrinkage cracks in wall judged to be acceptable.
5. Is the anchorage configuration consistent with plant documentation? (Note: This question only applies if the item is one of the 50% for which an anchorage configuration verification is required.) Yes
6. Based on the above anchorage evaluations, is the anchorage free of potentially adverse seismic conditions? Yes

Status: ☒ Y ☐ N ☐ U

Seismic Walkdown Checklist (SWC)

Equipment ID No.: D03-2203-0008

Equipment Class: (18) Instruments on Racks

Equipment Description: INSTRUMENT RACKS/ Instrument Rack 2203-8

Interaction Effects

- | | |
|---|-----|
| 7. Are soft targets free from impact by nearby equipment or structures? | Yes |
| 8. Are overhead equipment, distribution systems, ceiling tiles and lighting, and masonry block walls not likely to collapse onto the equipment?
<i>Overhead light fixtures judged to be acceptable. Adjacent masonry wall is safety-related.</i> | Yes |
| 9. Do attached lines have adequate flexibility to avoid damage? | Yes |
| 10. Based on the above seismic interaction evaluations, is equipment free of potentially adverse seismic interaction effects? | Yes |

Other Adverse Conditions

- | | |
|---|-----|
| 11. Have you looked for and found no adverse seismic conditions that could adversely affect the safety functions of the equipment?
<i>Tubes near overhead supports are flexible and judged to be acceptable.</i> | Yes |
|---|-----|

Comments

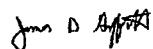
SEWS Anchorage Notes:

Anchored by 10 - 3/8" concrete expansion anchors and braced back to reinforced concrete wall by 4 braces.

Seismic Walkdown Team: J. Griffith & M. Wodarczyk - 8/1/2012

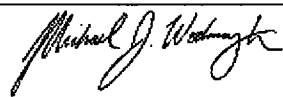
See U3 West HCU Bank area walk-by for further notes.

Evaluated by:



James Griffith

Date: 10/24/2012



Michael Wodarczyk

10/24/2012

Status: ☒ Y ☐ N ☐ U

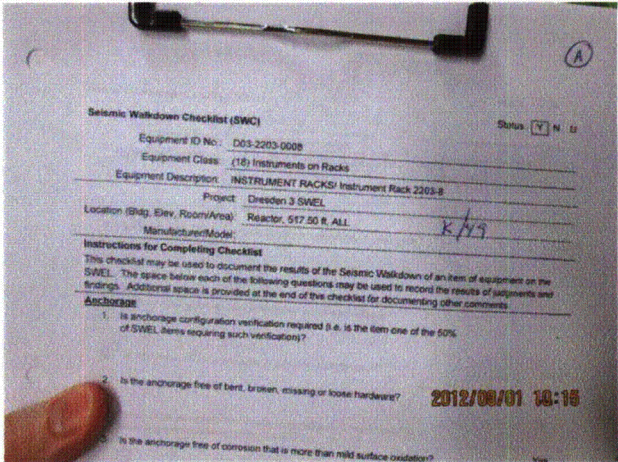
Seismic Walkdown Checklist (SWC)

Equipment ID No.: D03-2203-0008

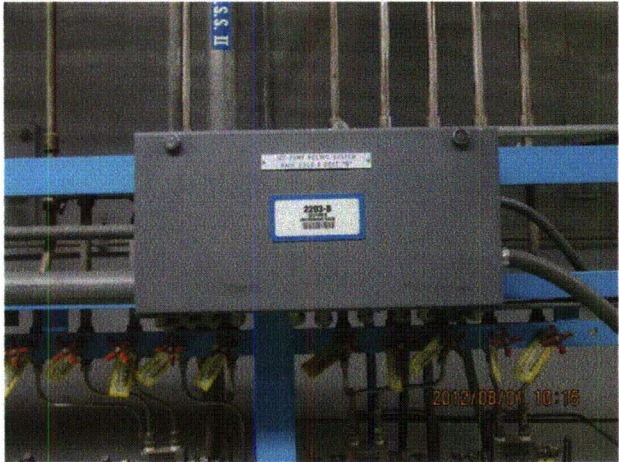
Equipment Class: (18) Instruments on Racks

Equipment Description: INSTRUMENT RACKS/ Instrument Rack 2203-8

Photos



20120801-Dresden-3 194



20120801-Dresden-3 195



20120801-Dresden-3 196



20120801-Dresden-3 197

Status: ☒ Y ☐ N ☐ U

Seismic Walkdown Checklist (SWC)

Equipment ID No.: D03-2203-0008

Equipment Class: (18) Instruments on Racks

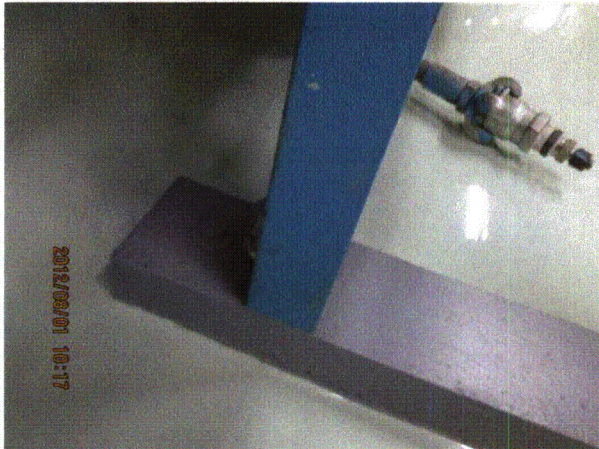
Equipment Description: INSTRUMENT RACKS/ Instrument Rack 2203-8



20120801-Dresden-3 198



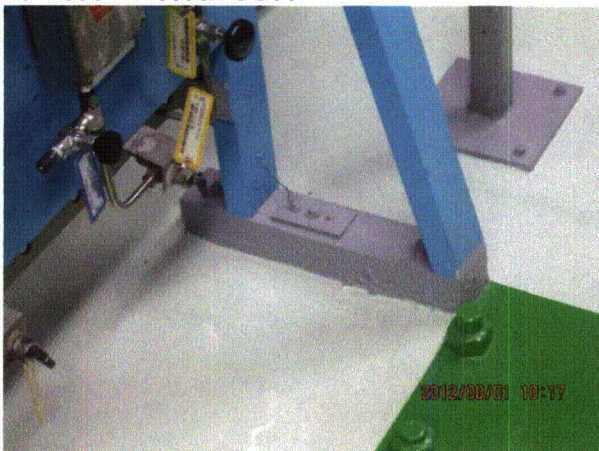
20120801-Dresden-3 199



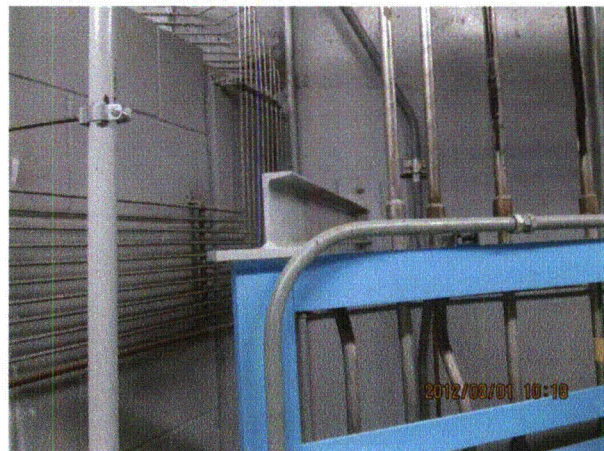
20120801-Dresden-3 200



20120801-Dresden-3 201



20120801-Dresden-3 202



20120801-Dresden-3 203

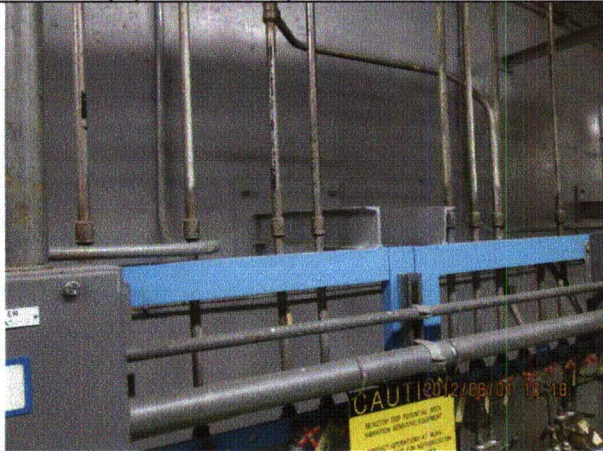
Status: ☒ Y ☐ N ☐ U

Seismic Walkdown Checklist (SWC)

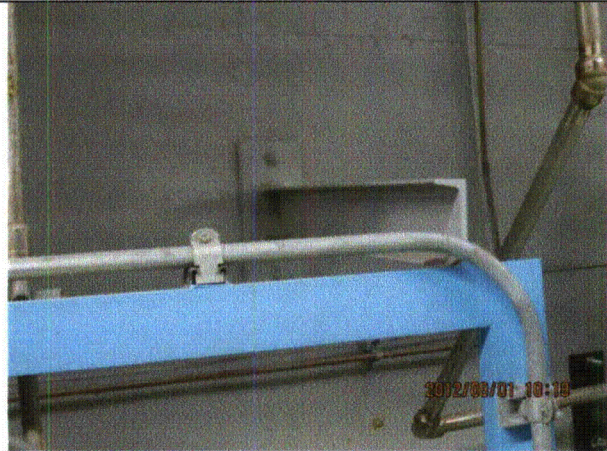
Equipment ID No.: D03-2203-0008

Equipment Class: (18) Instruments on Racks

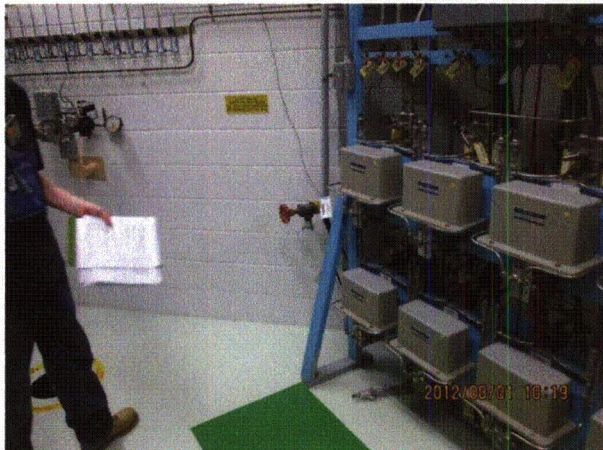
Equipment Description: INSTRUMENT RACKS/ Instrument Rack 2203-8



20120801-Dresden-3 204



20120801-Dresden-3 205



20120801-Dresden-3 206



20120801-Dresden-3 207



20120801-Dresden-3 208



20120801-Dresden-3 209

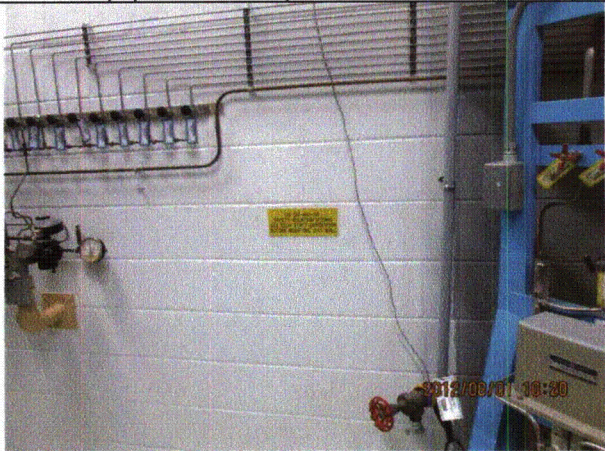
Status: ☒ Y ☐ N ☐ U

Seismic Walkdown Checklist (SWC)

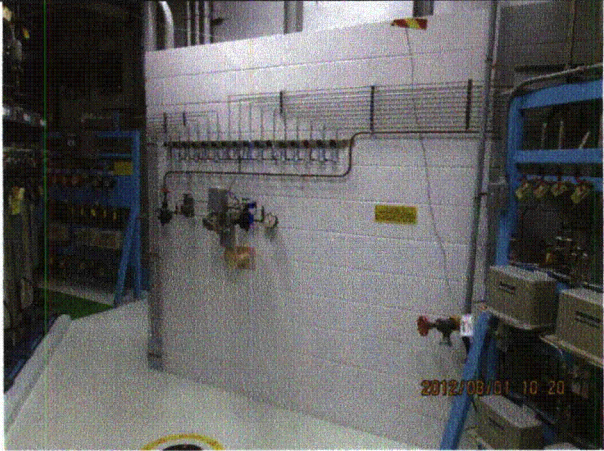
Equipment ID No.: D03-2203-0008

Equipment Class: (18) Instruments on Racks

Equipment Description: INSTRUMENT RACKS/ Instrument Rack 2203-8



20120801-Dresden-3 210



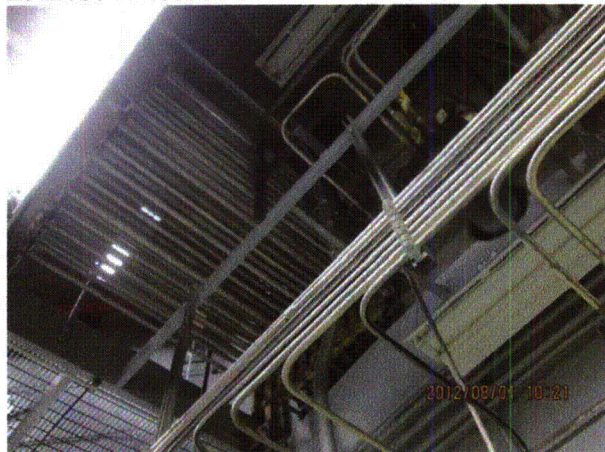
20120801-Dresden-3 211



20120801-Dresden-3 212



20120801-Dresden-3 213



20120801-Dresden-3 214



20120801-Dresden-3 215

Status: ☒ Y ☐ N ☐ U

Seismic Walkdown Checklist (SWC)

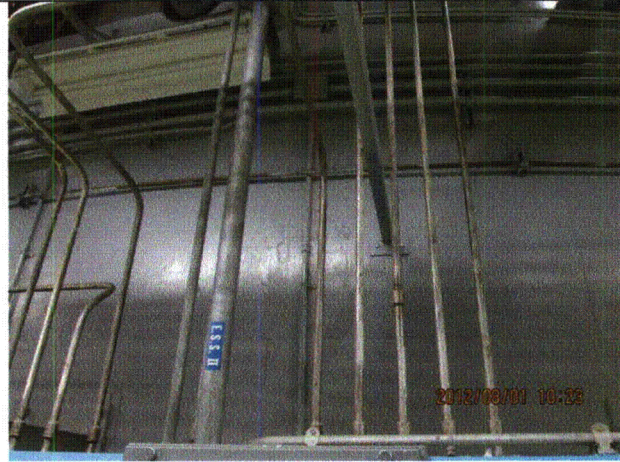
Equipment ID No.: D03-2203-0008

Equipment Class: (18) Instruments on Racks

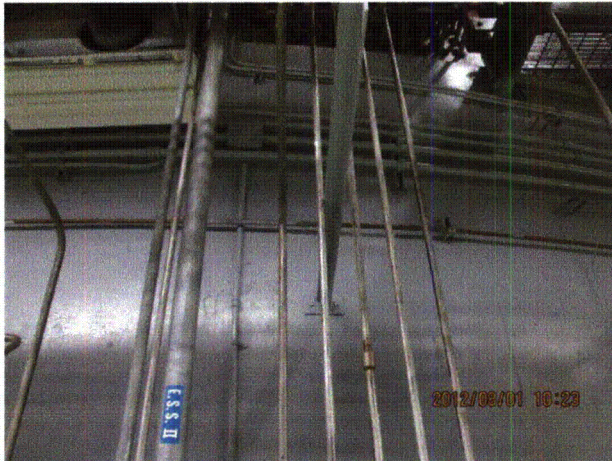
Equipment Description: INSTRUMENT RACKS/ Instrument Rack 2203-8



20120801-Dresden-3 216



20120801-Dresden-3 217



20120801-Dresden-3 218

Status: ☒ Y ☐ N ☐ U

Seismic Walkdown Checklist (SWC)

Equipment ID No.: D03-2203-0070A

Equipment Class: (18) Instruments on Racks

Equipment Description: INSTRUMENT RACKS/ Instrument Rack 2203-70A

Project: Dresden 3 SWEL

Location (Bldg, Elev, Room/Area): Turbine, 517.50 ft, ALL

Manufacturer/Model: _____

Instructions for Completing Checklist

This checklist may be used to document the results of the Seismic Walkdown of an item of equipment on the SWEL. The space below each of the following questions may be used to record the results of judgments and findings. Additional space is provided at the end of this checklist for documenting other comments.

Anchorage

1. Is anchorage configuration verification required (i.e., is the item one of the 50% of SWEL items requiring such verification)? Yes

2. Is the anchorage free of bent, broken, missing or loose hardware? Yes

3. Is the anchorage free of corrosion that is more than mild surface oxidation? Yes

4. Is the anchorage free of visible cracks in the concrete near the anchors? Yes
Minor shrinkage cracks in floor judged to be acceptable.

5. Is the anchorage configuration consistent with plant documentation? (Note: This question only applies if the item is one of the 50% for which an anchorage configuration verification is required.) Yes

6. Based on the above anchorage evaluations, is the anchorage free of potentially adverse seismic conditions? Yes

Status: ☒ Y ☐ N ☐ U

Seismic Walkdown Checklist (SWC)

Equipment ID No.: D03-2203-0070A

Equipment Class: (18) Instruments on Racks

Equipment Description: INSTRUMENT RACKS/ Instrument Rack 2203-70A

Interaction Effects

7. Are soft targets free from impact by nearby equipment or structures? Yes

Panels adjacent to 2203-70A restrained at top and judged to be acceptable.

8. Are overhead equipment, distribution systems, ceiling tiles and lighting, and masonry block walls not likely to collapse onto the equipment? Yes

Temporary light fixture tethered with cord and with redundant supports to permanent light fixtures and judged to be acceptable.

Adjacent masonry wall is safety-related.

9. Do attached lines have adequate flexibility to avoid damage? Yes

10. Based on the above seismic interaction evaluations, is equipment free of potentially adverse seismic interaction effects? Yes

Other Adverse Conditions

11. Have you looked for and found no adverse seismic conditions that could adversely affect the safety functions of the equipment? Yes

All cabinet doors opened to view internal base anchorage. No other adverse seismic conditions.

Comments

SEWS Anchorage Notes:

Anchored by nine 1/2" Wedge-type and shell concrete expansion anchors.

Seismic Walkdown Team: J. Griffith & M. Wodarczyk - 7/30/2012

Evaluated by: James D. Griffith James Griffith

Date: 9/30/2012

Michael J. Wodarczyk

Michael Wodarczyk

9/30/2012

Status: ☒ Y ☐ N ☐ U

Seismic Walkdown Checklist (SWC)

Equipment ID No.: D03-2203-0070A

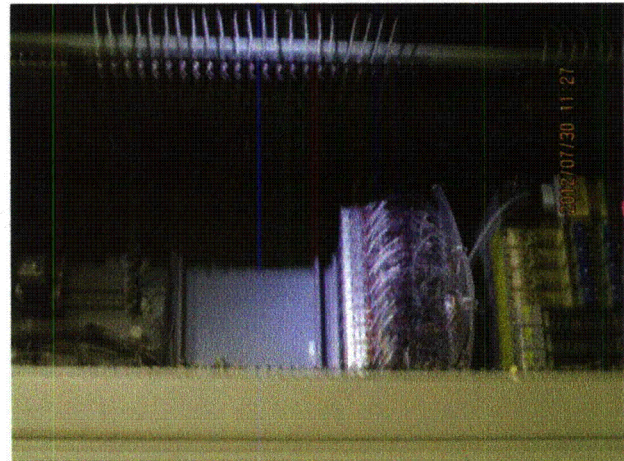
Equipment Class: (18) Instruments on Racks

Equipment Description: INSTRUMENT RACKS/ Instrument Rack 2203-70A

Photos



20120730-Dresden-3 102



20120730-Dresden-3 103



20120730-Dresden-3 104



20120730-Dresden-3 105

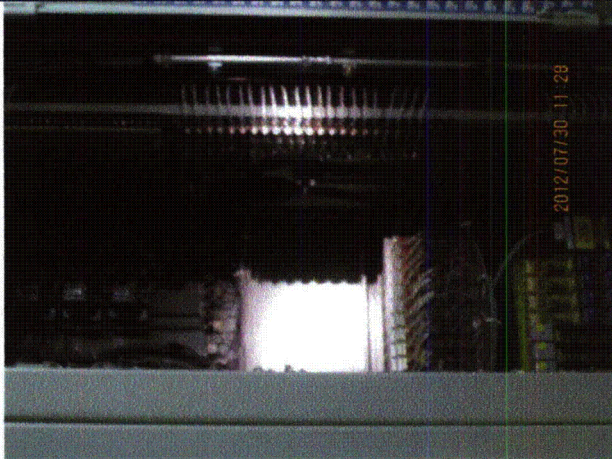
Status: ☒ Y ☐ N ☐ U

Seismic Walkdown Checklist (SWC)

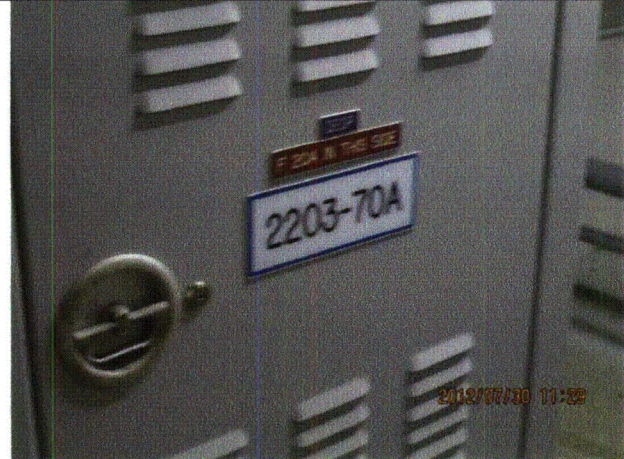
Equipment ID No.: D03-2203-0070A

Equipment Class: (18) Instruments on Racks

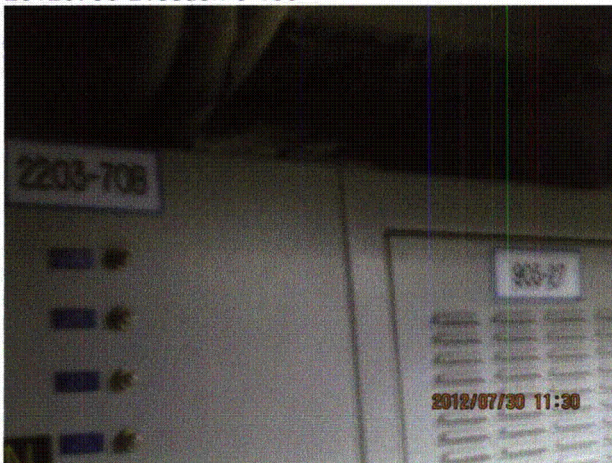
Equipment Description: INSTRUMENT RACKS/ Instrument Rack 2203-70A



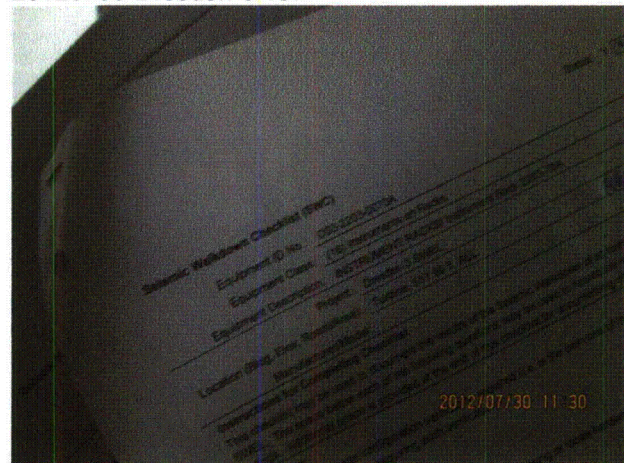
20120730-Dresden-3 106



20120730-Dresden-3 107



20120730-Dresden-3 108



20120730-Dresden-3 109

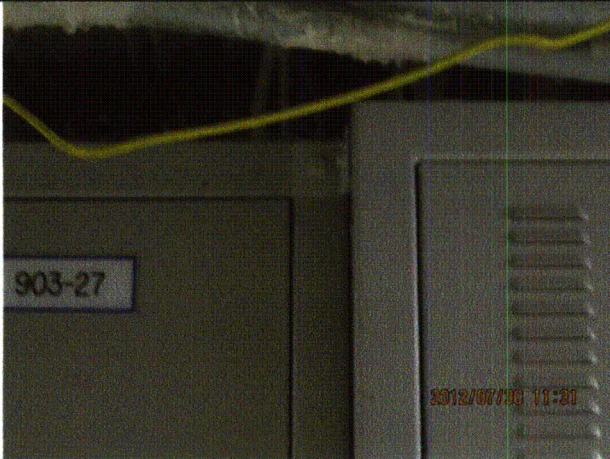
Status: ☒ Y ☐ N ☐ U

Seismic Walkdown Checklist (SWC)

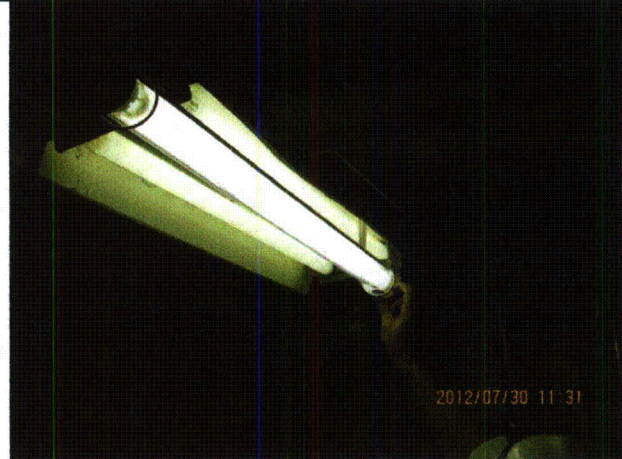
Equipment ID No.: D03-2203-0070A

Equipment Class: (18) Instruments on Racks

Equipment Description: INSTRUMENT RACKS/ Instrument Rack 2203-70A



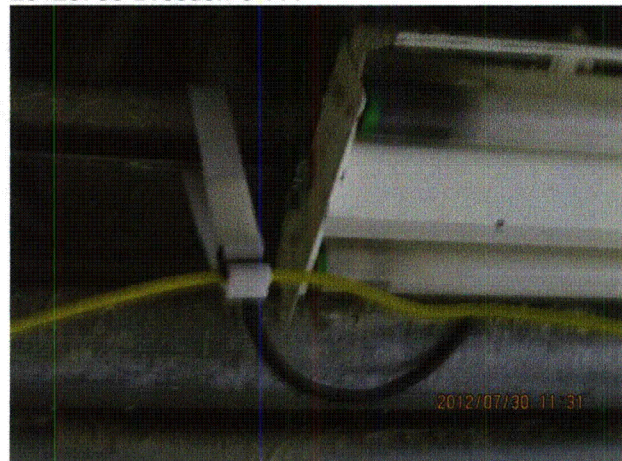
20120730-Dresden-3 110



20120730-Dresden-3 111



20120730-Dresden-3 112



20120730-Dresden-3 113

Status: ☒ Y ☐ N ☐ U

Seismic Walkdown Checklist (SWC)

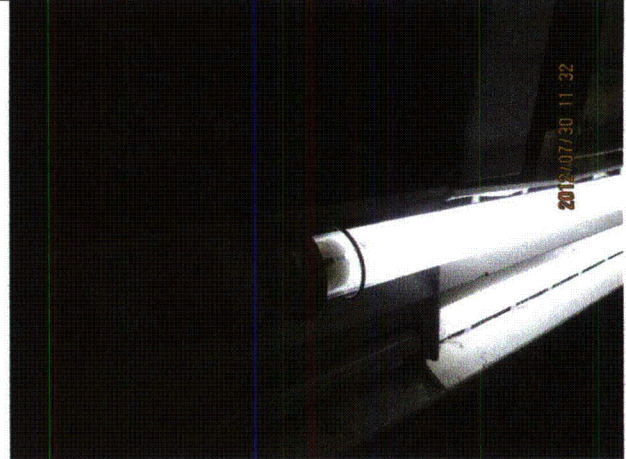
Equipment ID No.: D03-2203-0070A

Equipment Class: (18) Instruments on Racks

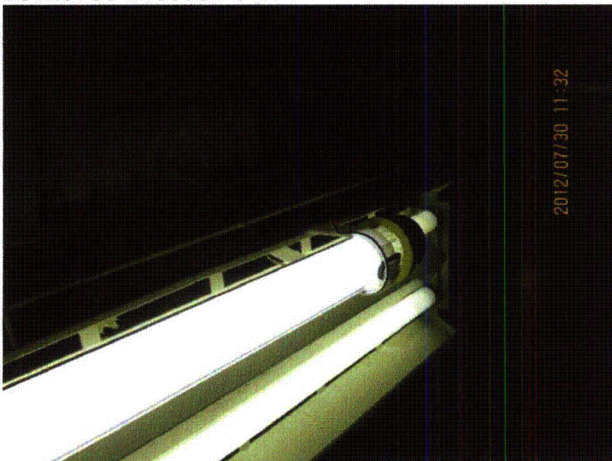
Equipment Description: INSTRUMENT RACKS/ Instrument Rack 2203-70A



20120730-Dresden-3 114



20120730-Dresden-3 115



20120730-Dresden-3 116



20120730-Dresden-3 117

Status: ☒ Y ☐ N ☐ U

Seismic Walkdown Checklist (SWC)

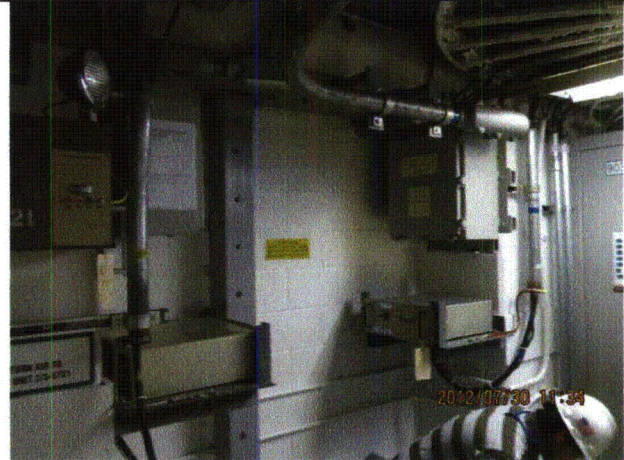
Equipment ID No.: D03-2203-0070A

Equipment Class: (18) Instruments on Racks

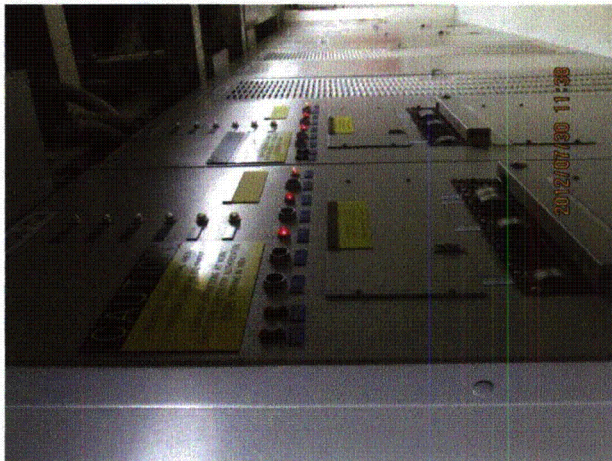
Equipment Description: INSTRUMENT RACKS/ Instrument Rack 2203-70A



20120730-Dresden-3 118



20120730-Dresden-3 119



20120730-Dresden-3 120

Status: ☒ Y ☐ N ☐ U

Seismic Walkdown Checklist (SWC)

Equipment ID No.: D03-2203-0073A

Equipment Class: (18) Instruments on Racks

Equipment Description: INSTRUMENT RACKS/ Instrument Rack 2203-73A

Project: Dresden 3 SWEL

Location (Bldg, Elev, Room/Area): Turbine, 538.00 ft, ALL

Manufacturer/Model:

Instructions for Completing Checklist

This checklist may be used to document the results of the Seismic Walkdown of an item of equipment on the SWEL. The space below each of the following questions may be used to record the results of judgments and findings. Additional space is provided at the end of this checklist for documenting other comments.

Anchorage

1. Is anchorage configuration verification required (i.e., is the item one of the 50% of SWEL items requiring such verification)? Yes
2. Is the anchorage free of bent, broken, missing or loose hardware? Yes
View of east-side middle anchor is obstructed.
3. Is the anchorage free of corrosion that is more than mild surface oxidation? Yes
4. Is the anchorage free of visible cracks in the concrete near the anchors? Yes
5. Is the anchorage configuration consistent with plant documentation? (Note: This question only applies if the item is one of the 50% for which an anchorage configuration verification is required.) Yes
6. Based on the above anchorage evaluations, is the anchorage free of potentially adverse seismic conditions? Yes
Viewed 5 of 6 anchors. Remaining anchor could not be viewed due to obstruction from equipment. Anchors viewed matched documentation, therefore it is reasonable to conclude that the anchors match plant documentation without further verification.

Status: ☒ Y ☐ N ☐ U

Seismic Walkdown Checklist (SWC)

Equipment ID No.: D03-2203-0073A

Equipment Class: (18) Instruments on Racks

Equipment Description: INSTRUMENT RACKS/ Instrument Rack 2203-73A

Interaction Effects

7. Are soft targets free from impact by nearby equipment or structures? Yes
8. Are overhead equipment, distribution systems, ceiling tiles and lighting, and masonry block walls not likely to collapse onto the equipment? Yes
Overhead light fixtures judged to be acceptable.
9. Do attached lines have adequate flexibility to avoid damage? Yes
10. Based on the above seismic interaction evaluations, is equipment free of potentially adverse seismic interaction effects? Yes

Other Adverse Conditions

11. Have you looked for and found no adverse seismic conditions that could adversely affect the safety functions of the equipment? Yes
Adjacent fixed grating has gap at base of equipment; judged to be acceptable.

Comments

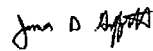
SEWS Anchorage Notes:

Panel 36Dx30Wx98H welded to steel base, 4Wx 36L 1/2" Plate. Steel base in turn anchored to R/C floor by six 1/2" concrete expansion anchors, 3 on each side.

Seismic Walkdown Team: J. Griffith & M. Wodarczyk - 7/31/2012

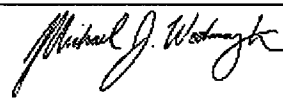
See Panel 2202-73A area walk-by for further information.

Evaluated by:



James Griffith

Date: 10/24/2012



Michael Wodarczyk

10/24/2012

Status: ☒ Y ☐ N ☐ U

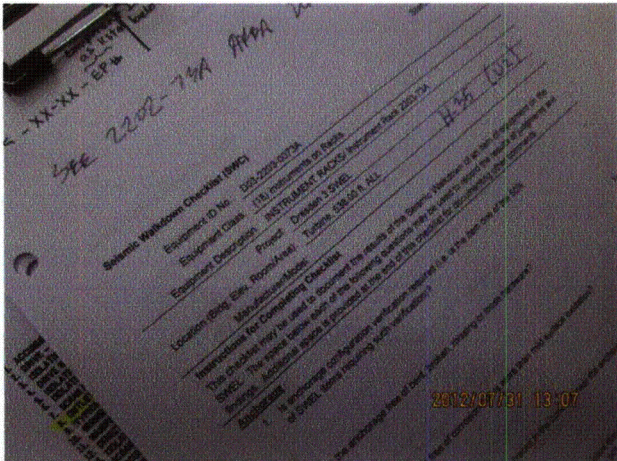
Seismic Walkdown Checklist (SWC)

Equipment ID No.: D03-2203-0073A

Equipment Class: (18) Instruments on Racks

Equipment Description: INSTRUMENT RACKS/ Instrument Rack 2203-73A

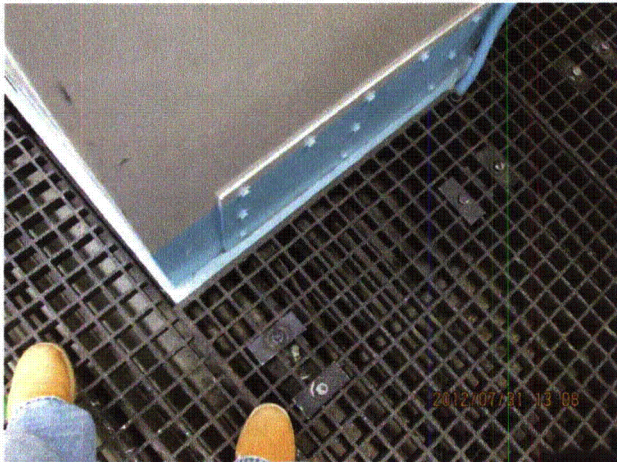
Photos



20120731-Dresden-3 338



20120731-Dresden-3 339



20120731-Dresden-3 340



20120731-Dresden-3 341

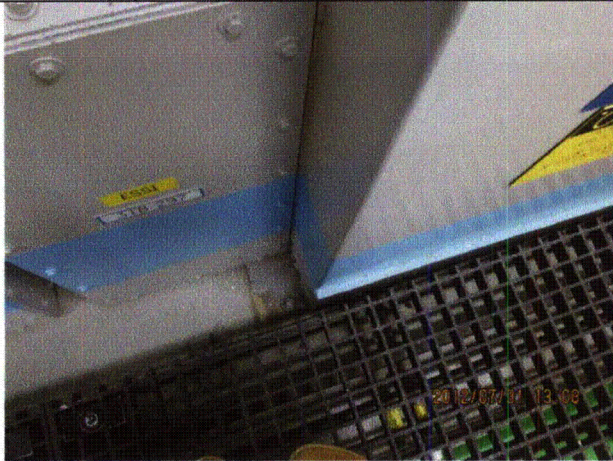
Status: ☒ Y ☐ N ☐ U

Seismic Walkdown Checklist (SWC)

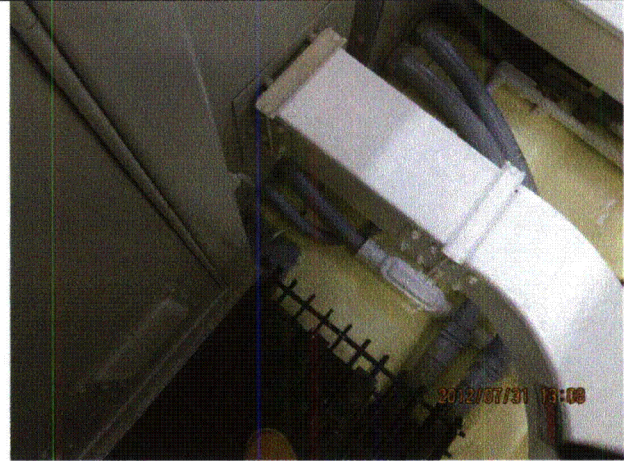
Equipment ID No.: D03-2203-0073A

Equipment Class: (18) Instruments on Racks

Equipment Description: INSTRUMENT RACKS/ Instrument Rack 2203-73A



20120731-Dresden-3 342



20120731-Dresden-3 343

Status: ☒ Y ☐ N ☐ U

Seismic Walkdown Checklist (SWC)

Equipment ID No.: D03-2253-0010

Equipment Class: (20) Instrumentation and Control Panels and Cabinets

Equipment Description: CONTROL PANEL/ DG Metering and Relay Cabinet

Project: Dresden 3 SWEL

Location (Bldg, Elev, Room/Area): Turbine, 517.50 ft, ALL

Manufacturer/Model: _____

Instructions for Completing Checklist

This checklist may be used to document the results of the Seismic Walkdown of an item of equipment on the SWEL. The space below each of the following questions may be used to record the results of judgments and findings. Additional space is provided at the end of this checklist for documenting other comments.

Anchorage

1. Is anchorage configuration verification required (i.e., is the item one of the 50% of SWEL items requiring such verification)? Yes

2. Is the anchorage free of bent, broken, missing or loose hardware? Yes

3. Is the anchorage free of corrosion that is more than mild surface oxidation? Yes

4. Is the anchorage free of visible cracks in the concrete near the anchors? Yes
Minor shrinkage cracks in floor judged to be acceptable.

5. Is the anchorage configuration consistent with plant documentation? (Note: This question only applies if the item is one of the 50% for which an anchorage configuration verification is required.) Yes

6. Based on the above anchorage evaluations, is the anchorage free of potentially adverse seismic conditions? Yes

Status: ☒ Y ☐ N ☐ U

Seismic Walkdown Checklist (SWC)

Equipment ID No.: D03-2253-0010

Equipment Class: (20) Instrumentation and Control Panels and Cabinets

Equipment Description: CONTROL PANEL/ DG Metering and Relay Cabinet

Interaction Effects

- | | |
|---|-----|
| 7. Are soft targets free from impact by nearby equipment or structures? | Yes |
| 8. Are overhead equipment, distribution systems, ceiling tiles and lighting, and masonry block walls not likely to collapse onto the equipment? | Yes |
| 9. Do attached lines have adequate flexibility to avoid damage? | Yes |
| 10. Based on the above seismic interaction evaluations, is equipment free of potentially adverse seismic interaction effects? | Yes |

Other Adverse Conditions

- | | |
|--|-----|
| 11. Have you looked for and found no adverse seismic conditions that could adversely affect the safety functions of the equipment? | Yes |
|--|-----|

Comments

SEWS Anchorage Notes:

The base channel is welded in all four corners with 1" long 3/16" fillet welds.

Seismic Walkdown Team: J. Griffith & M. Wodarczyk - 7/31/2012

Evaluated by:  James Griffith

Date: 9/30/2012



Michael Wodarczyk

9/30/2012

Status: ☒ Y ☐ N ☐ U

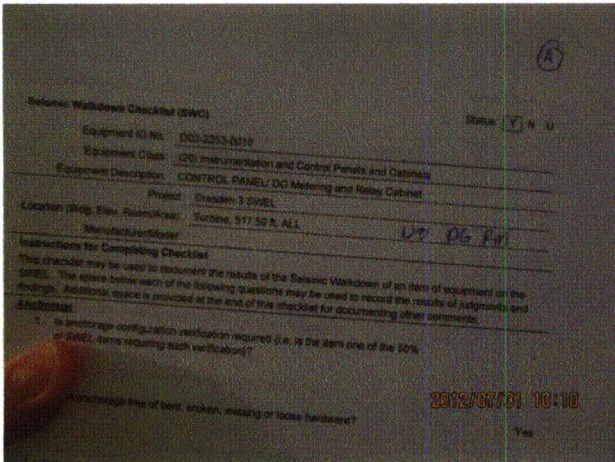
Seismic Walkdown Checklist (SWC)

Equipment ID No.: D03-2253-0010

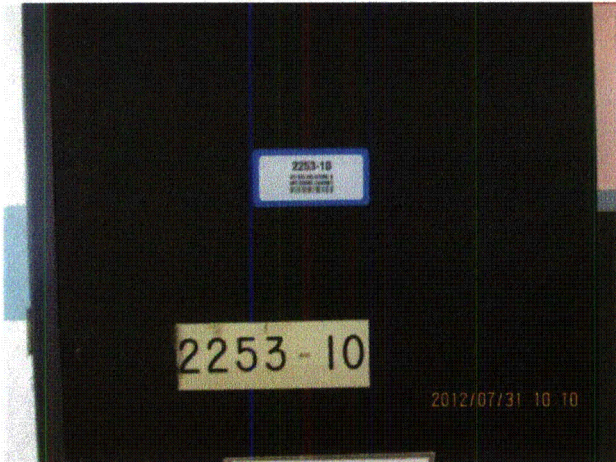
Equipment Class: (20) Instrumentation and Control Panels and Cabinets

Equipment Description: CONTROL PANEL/ DG Metering and Relay Cabinet

Photos



20120731-Dresden-3 169



20120731-Dresden-3 170



20120731-Dresden-3 171



20120731-Dresden-3 172

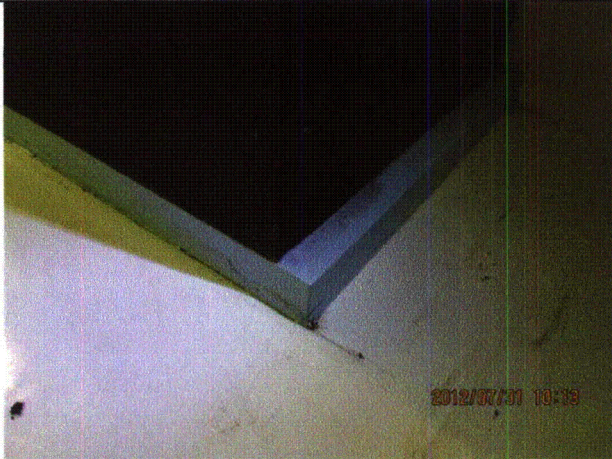
Status: ☒ Y ☐ N ☐ U

Seismic Walkdown Checklist (SWC)

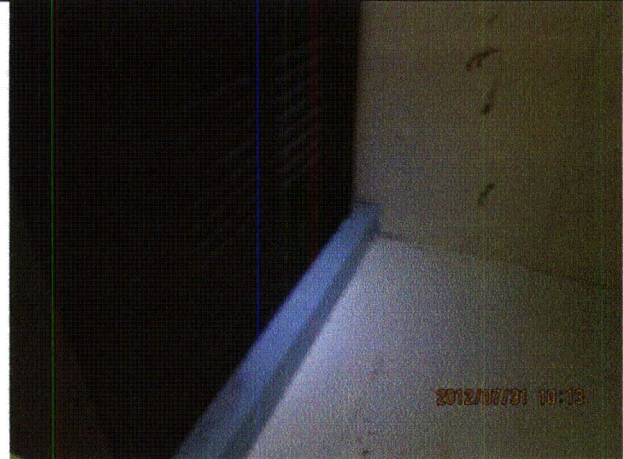
Equipment ID No.: D03-2253-0010

Equipment Class: (20) Instrumentation and Control Panels and Cabinets

Equipment Description: CONTROL PANEL/ DG Metering and Relay Cabinet



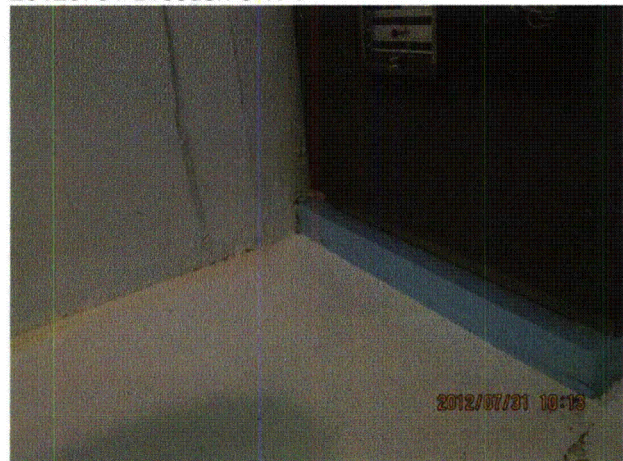
20120731-Dresden-3 173



20120731-Dresden-3 174



20120731-Dresden-3 175



20120731-Dresden-3 176

Status: ☒ Y ☐ N ☐ U

Seismic Walkdown Checklist (SWC)

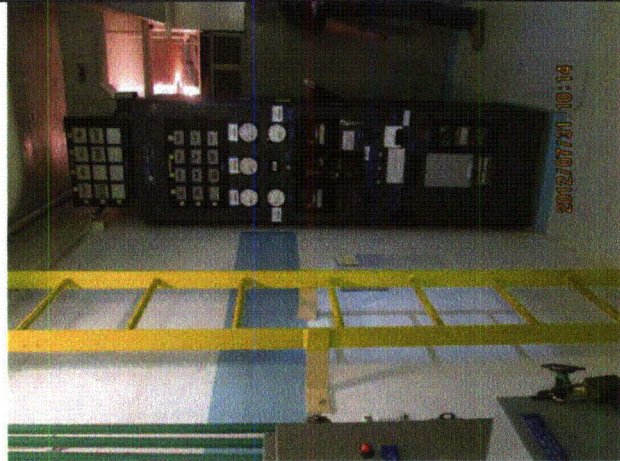
Equipment ID No.: D03-2253-0010

Equipment Class: (20) Instrumentation and Control Panels and Cabinets

Equipment Description: CONTROL PANEL/ DG Metering and Relay Cabinet



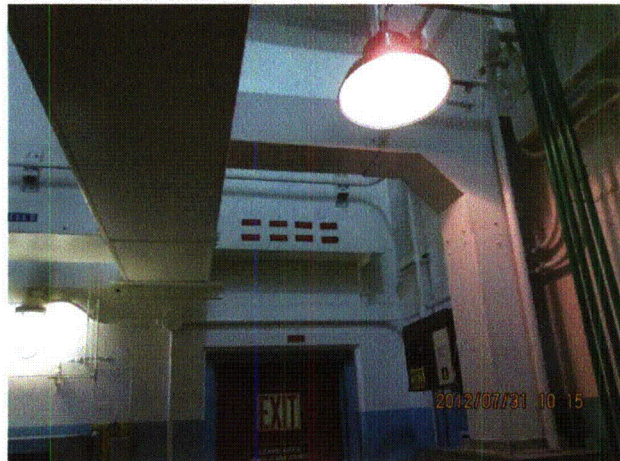
20120731-Dresden-3 177



20120731-Dresden-3 178



20120731-Dresden-3 179



20120731-Dresden-3 180

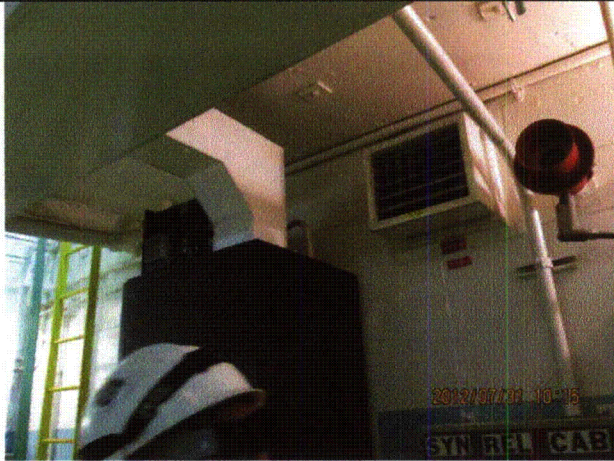
Status: ☒ Y ☐ N ☐ U

Seismic Walkdown Checklist (SWC)

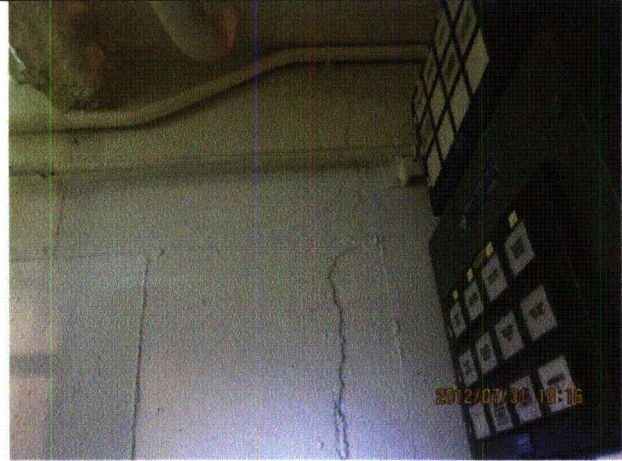
Equipment ID No.: D03-2253-0010

Equipment Class: (20) Instrumentation and Control Panels and Cabinets

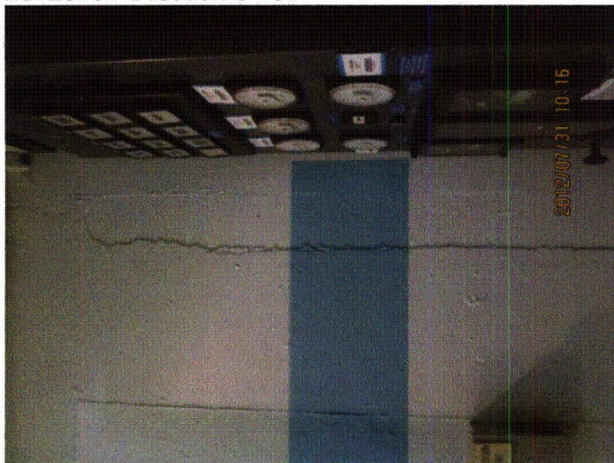
Equipment Description: CONTROL PANEL/ DG Metering and Relay Cabinet



20120731-Dresden-3 181



20120731-Dresden-3 182



20120731-Dresden-3 183



20120731-Dresden-3 184

Status: ☒ Y ☐ N ☐ U

Seismic Walkdown Checklist (SWC)

Equipment ID No.: D03-2253-0021

Equipment Class: (20) Instrumentation and Control Panels and Cabinets

Equipment Description: CONTROL PANEL/ DG Excitation Cabinet

Project: Dresden 3 SWEL

Location (Bldg, Elev, Room/Area): Turbine, 517.50 ft, ALL

Manufacturer/Model: _____

Instructions for Completing Checklist

This checklist may be used to document the results of the Seismic Walkdown of an item of equipment on the SWEL. The space below each of the following questions may be used to record the results of judgments and findings. Additional space is provided at the end of this checklist for documenting other comments.

Anchorage

1. Is anchorage configuration verification required (i.e., is the item one of the 50% of SWEL items requiring such verification)? Yes

2. Is the anchorage free of bent, broken, missing or loose hardware? Yes

3. Is the anchorage free of corrosion that is more than mild surface oxidation? Yes

4. Is the anchorage free of visible cracks in the concrete near the anchors? Yes
Minor shrinkage cracks in floor judged to be acceptable.

5. Is the anchorage configuration consistent with plant documentation? (Note: This question only applies if the item is one of the 50% for which an anchorage configuration verification is required.) Yes

6. Based on the above anchorage evaluations, is the anchorage free of potentially adverse seismic conditions? Yes

Status: ☒ Y ☐ N ☐ U

Seismic Walkdown Checklist (SWC)

Equipment ID No.: D03-2253-0021

Equipment Class: (20) Instrumentation and Control Panels and Cabinets

Equipment Description: CONTROL PANEL/ DG Excitation Cabinet

Interaction Effects

- | | |
|---|-----|
| 7. Are soft targets free from impact by nearby equipment or structures? | Yes |
| 8. Are overhead equipment, distribution systems, ceiling tiles and lighting, and masonry block walls not likely to collapse onto the equipment? | Yes |
| 9. Do attached lines have adequate flexibility to avoid damage? | Yes |
| 10. Based on the above seismic interaction evaluations, is equipment free of potentially adverse seismic interaction effects? | Yes |

Other Adverse Conditions

- | | |
|--|-----|
| 11. Have you looked for and found no adverse seismic conditions that could adversely affect the safety functions of the equipment? | Yes |
|--|-----|

Comments

SEWS Anchorage Notes:

Welding is very marginal front of panel has about 2" long by 1/8" fillets, one side has 2 1" and 1-3/4" long 1/8" fillets and the other side has about 1" long 1/8" fillet toward the back. Rear of panel has no anchorage.

Seismic Walkdown Team: J. Griffith & M. Wodarczyk - 7/31/2012

Evaluated by: James Griffith

Date: 9/30/2012

Michael J. Wodarczyk

Michael Wodarczyk

9/30/2012

Status: ☒ Y ☐ N ☐ U

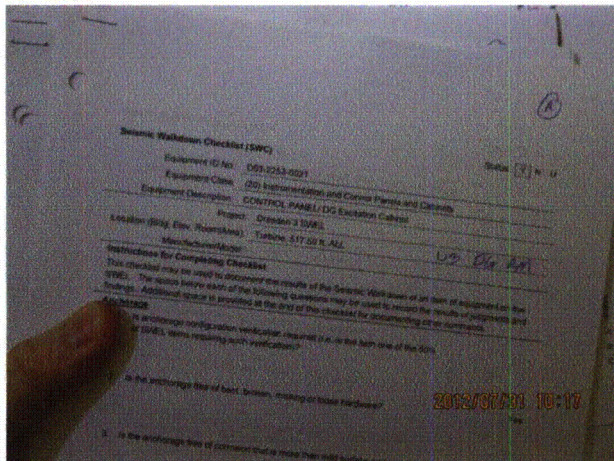
Seismic Walkdown Checklist (SWC)

Equipment ID No.: D03-2253-0021

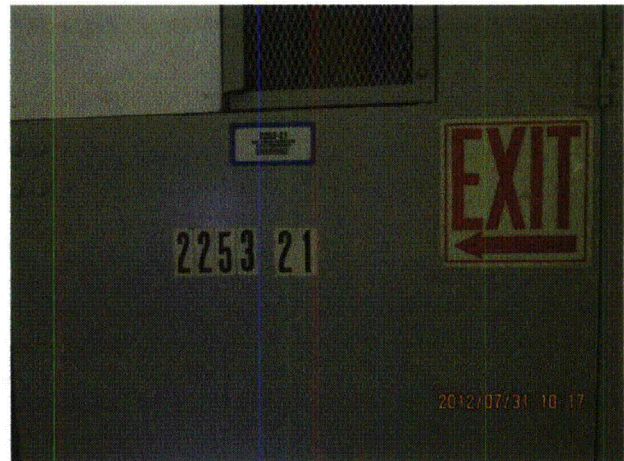
Equipment Class: (20) Instrumentation and Control Panels and Cabinets

Equipment Description: CONTROL PANEL/ DG Excitation Cabinet

Photos



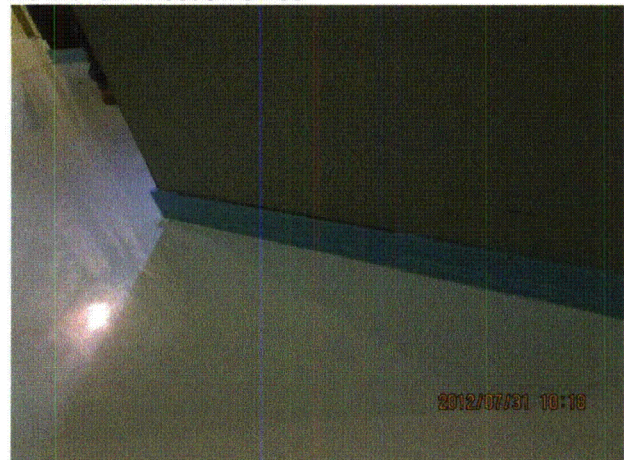
20120731-Dresden-3 185



20120731-Dresden-3 186



20120731-Dresden-3 187



20120731-Dresden-3 188

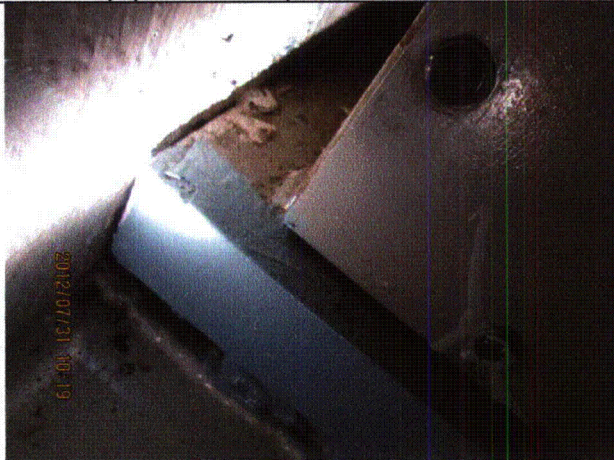
Status: ☒ Y ☐ N ☐ U

Seismic Walkdown Checklist (SWC)

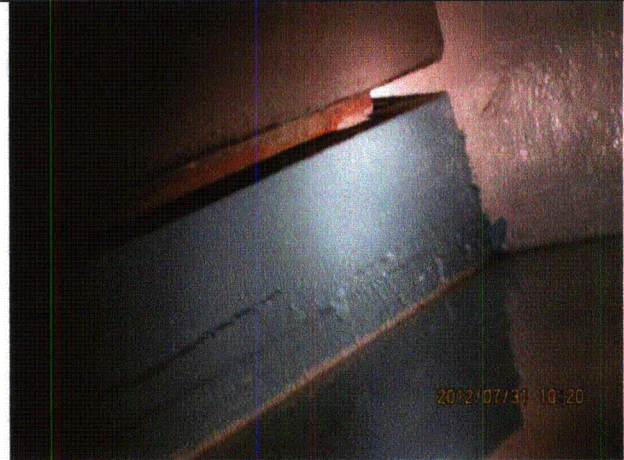
Equipment ID No.: D03-2253-0021

Equipment Class: (20) Instrumentation and Control Panels and Cabinets

Equipment Description: CONTROL PANEL/ DG Excitation Cabinet



20120731-Dresden-3 189



20120731-Dresden-3 190



20120731-Dresden-3 191



20120731-Dresden-3 192

Status: ☒ Y ☐ N ☐ U

Seismic Walkdown Checklist (SWC)

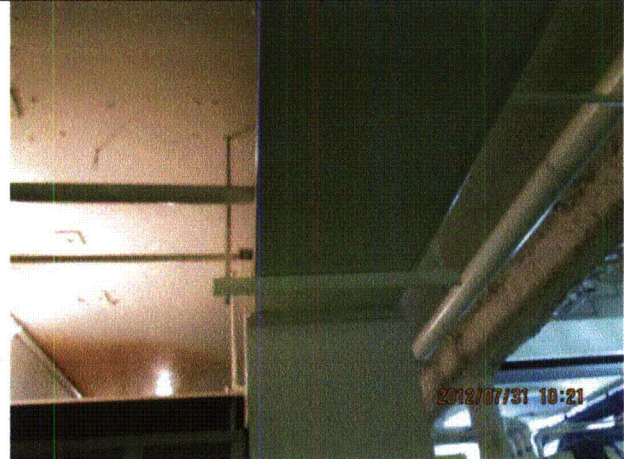
Equipment ID No.: D03-2253-0021

Equipment Class: (20) Instrumentation and Control Panels and Cabinets

Equipment Description: CONTROL PANEL/ DG Excitation Cabinet



20120731-Dresden-3 193



20120731-Dresden-3 194



20120731-Dresden-3 195

Status: ☒ Y ☐ N ☐ U

Seismic Walkdown Checklist (SWC)

Equipment ID No.: D03-2253-0084

Equipment Class: (18) Instruments on Racks

Equipment Description: INSTRUMENT RACKS/ Instrument Rack 2253-84

Project: Dresden 3 SWEL

Location (Bldg, Elev, Room/Area): Reactor, 545.50 ft, ALL

Manufacturer/Model: _____

Instructions for Completing Checklist

This checklist may be used to document the results of the Seismic Walkdown of an item of equipment on the SWEL. The space below each of the following questions may be used to record the results of judgments and findings. Additional space is provided at the end of this checklist for documenting other comments.

Anchorage

1. Is anchorage configuration verification required (i.e., is the item one of the 50% of SWEL items requiring such verification)? Yes

2. Is the anchorage free of bent, broken, missing or loose hardware? Yes

3. Is the anchorage free of corrosion that is more than mild surface oxidation? Yes

4. Is the anchorage free of visible cracks in the concrete near the anchors? Yes

5. Is the anchorage configuration consistent with plant documentation? (Note: This question only applies if the item is one of the 50% for which an anchorage configuration verification is required.) Yes

6. Based on the above anchorage evaluations, is the anchorage free of potentially adverse seismic conditions? Yes

Status: ☒ Y ☐ N ☐ U

Seismic Walkdown Checklist (SWC)

Equipment ID No.: D03-2253-0084

Equipment Class: (18) Instruments on Racks

Equipment Description: INSTRUMENT RACKS/ Instrument Rack 2253-84

Interaction Effects

- | | |
|--|-----|
| 7. Are soft targets free from impact by nearby equipment or structures? | Yes |
| 8. Are overhead equipment, distribution systems, ceiling tiles and lighting, and masonry block walls not likely to collapse onto the equipment?
<i>Overhead light fixtures are judged to be acceptable.</i> | Yes |
| 9. Do attached lines have adequate flexibility to avoid damage? | Yes |
| 10. Based on the above seismic interaction evaluations, is equipment free of potentially adverse seismic interaction effects? | Yes |

Other Adverse Conditions

- | | |
|--|-----|
| 11. Have you looked for and found no adverse seismic conditions that could adversely affect the safety functions of the equipment? | Yes |
|--|-----|

Comments

SEWS Anchorage Notes:

Distribution Panel cantilevered from floor on two legs each. Each leg is welded to a base plate that is anchored to the floor with four 1/2" diameter expansion bolts.

Seismic Walkdown Team: J. Griffith & M. Wodarczyk - 8/2/2012

Evaluated by: James D. Griffith James Griffith

Date: 9/30/2012

Michael J. Wodarczyk

Michael Wodarczyk

9/30/2012

Status: ☒ Y ☐ N ☐ U

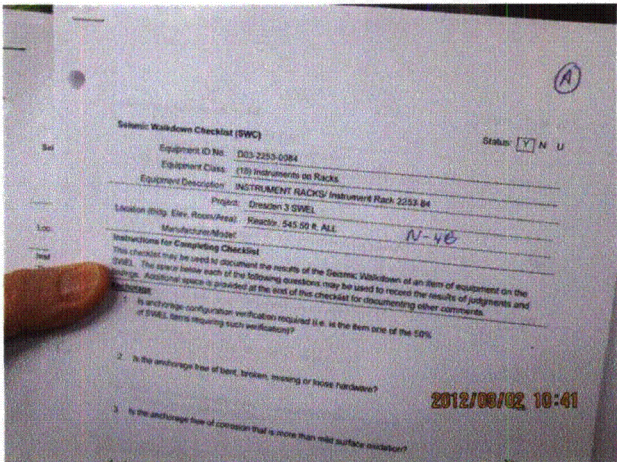
Seismic Walkdown Checklist (SWC)

Equipment ID No.: D03-2253-0084

Equipment Class: (18) Instruments on Racks

Equipment Description: INSTRUMENT RACKS/ Instrument Rack 2253-84

Photos



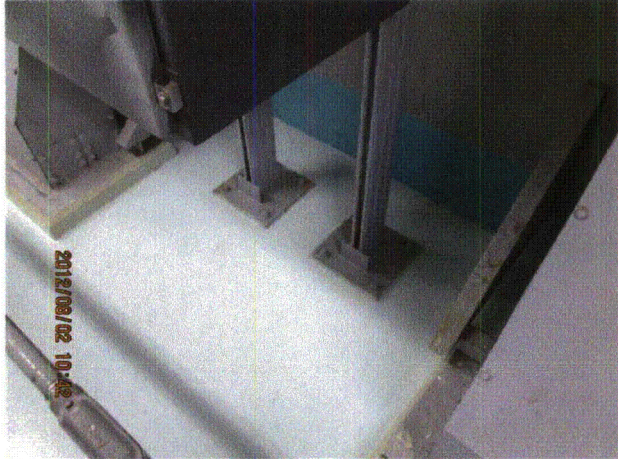
20120802-Dresden-3 117



20120802-Dresden-3 118



20120802-Dresden-3 119



20120802-Dresden-3 120

Status: ☒ Y ☐ N ☐ U

Seismic Walkdown Checklist (SWC)

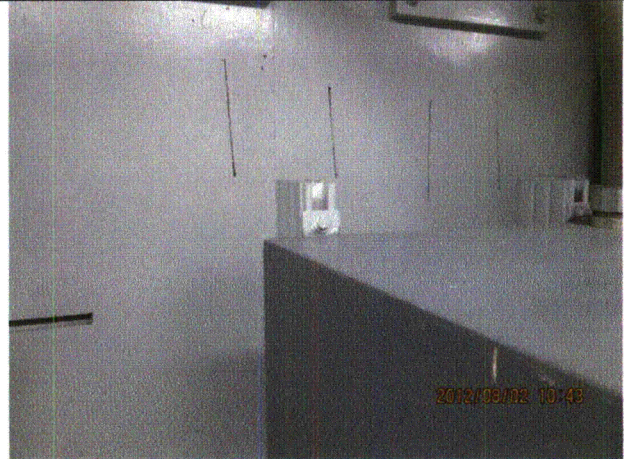
Equipment ID No.: D03-2253-0084

Equipment Class: (18) Instruments on Racks

Equipment Description: INSTRUMENT RACKS/ Instrument Rack 2253-84



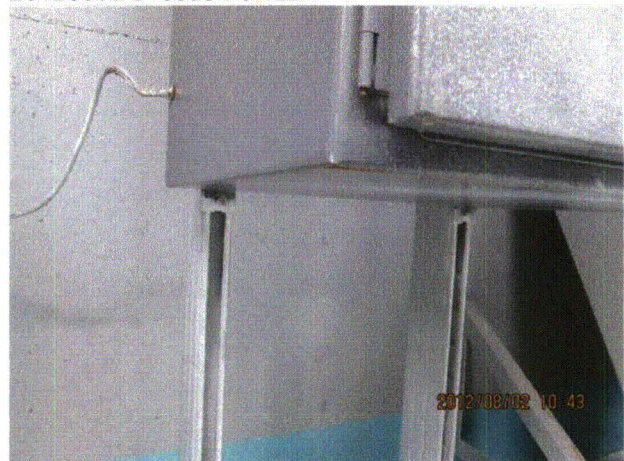
20120802-Dresden-3 121



20120802-Dresden-3 122



20120802-Dresden-3 123



20120802-Dresden-3 124

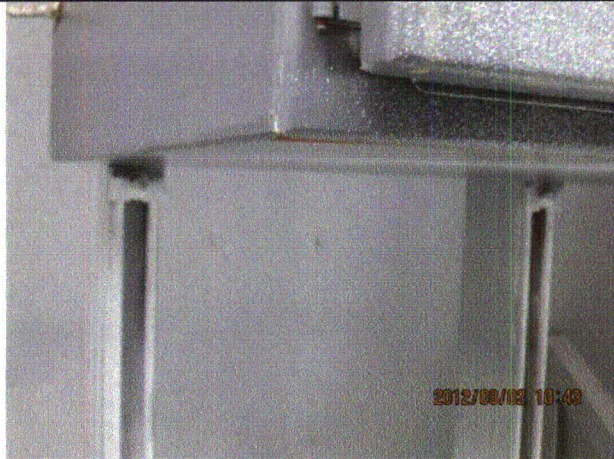
Status: ☒ Y ☐ N ☐ U

Seismic Walkdown Checklist (SWC)

Equipment ID No.: D03-2253-0084

Equipment Class: (18) Instruments on Racks

Equipment Description: INSTRUMENT RACKS/ Instrument Rack 2253-84



20120802-Dresden-3 125



20120802-Dresden-3 126



20120802-Dresden-3 127



20120802-Dresden-3 128

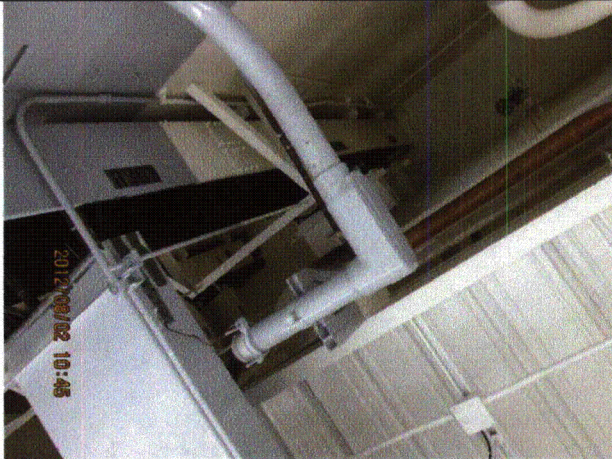
Status: ☒ Y ☐ N ☐ U

Seismic Walkdown Checklist (SWC)

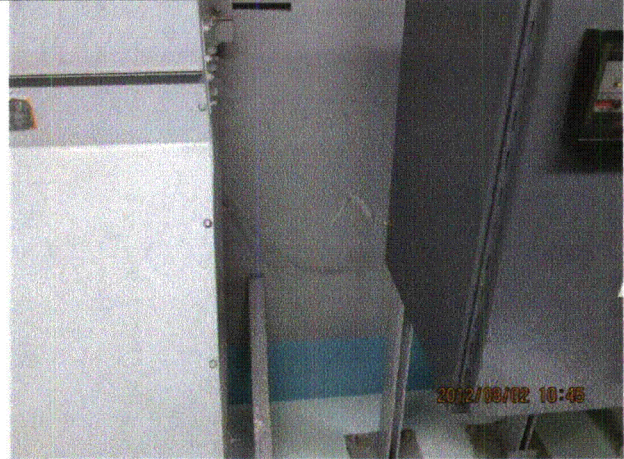
Equipment ID No.: D03-2253-0084

Equipment Class: (18) Instruments on Racks

Equipment Description: INSTRUMENT RACKS/ Instrument Rack 2253-84



20120802-Dresden-3 129



20120802-Dresden-3 130



20120802-Dresden-3 131



20120802-Dresden-3 132

Status: ☒ Y ☐ N ☐ U

Seismic Walkdown Checklist (SWC)

Equipment ID No.: D03-2253-0084

Equipment Class: (18) Instruments on Racks

Equipment Description: INSTRUMENT RACKS/ Instrument Rack 2253-84



20120802-Dresden-3 133