

Status: ☒ Y ☐ N ☐ U

Seismic Walkdown Checklist (SWC)

Equipment ID No.: D03-1501-0021AV20

Equipment Class: (8) Motor-Operated and Solenoid-Operated Valves

Equipment Description: LPCI/ LPCI Injection Line Valve

Project: Dresden 3 SWEL

Location (Bldg, Elev, Room/Area): Reactor, 517.50 ft, ALL

Manufacturer/Model: _____

Instructions for Completing Checklist

This checklist may be used to document the results of the Seismic Walkdown of an item of equipment on the SWEL. The space below each of the following questions may be used to record the results of judgments and findings. Additional space is provided at the end of this checklist for documenting other comments.

Anchorage

- | | | |
|----|---|----------------|
| 1. | Is anchorage configuration verification required (i.e., is the item one of the 50% of SWEL items requiring such verification)? | No |
| 2. | Is the anchorage free of bent, broken, missing or loose hardware? | Not Applicable |
| 3. | Is the anchorage free of corrosion that is more than mild surface oxidation? | Not Applicable |
| 4. | Is the anchorage free of visible cracks in the concrete near the anchors? | Not Applicable |
| 5. | Is the anchorage configuration consistent with plant documentation? (Note: This question only applies if the item is one of the 50% for which an anchorage configuration verification is required.) | Not Applicable |
| 6. | Based on the above anchorage evaluations, is the anchorage free of potentially adverse seismic conditions? | Yes |

Status: ☒ Y ☐ N ☐ U

Seismic Walkdown Checklist (SWC)

Equipment ID No.: D03-1501-0021AV20

Equipment Class: (8) Motor-Operated and Solenoid-Operated Valves

Equipment Description: LPCI/ LPCI Injection Line Valve

Interaction Effects

- | | |
|--|-----|
| 7. Are soft targets free from impact by nearby equipment or structures? | Yes |
| 8. Are overhead equipment, distribution systems, ceiling tiles and lighting, and masonry block walls not likely to collapse onto the equipment?
<i>Overhead light fixtures are judged to be acceptable.</i> | Yes |
| 9. Do attached lines have adequate flexibility to avoid damage? | Yes |
| 10. Based on the above seismic interaction evaluations, is equipment free of potentially adverse seismic interaction effects? | Yes |

Other Adverse Conditions

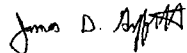
- | | |
|--|-----|
| 11. Have you looked for and found no adverse seismic conditions that could adversely affect the safety functions of the equipment? | Yes |
|--|-----|

Comments

Seismic Walkdown Team: J. Griffith & M. Wodarczyk - 8/1/2012

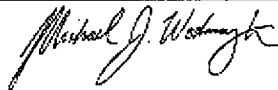
For upper area walk-by, see U3 East HCU Bank area walk-by notes from 7/31/12.

Evaluated by:



James Griffith

Date: 9/30/2012



Michael Wodarczyk

9/30/2012

Status: ☒ Y ☐ N ☐ U

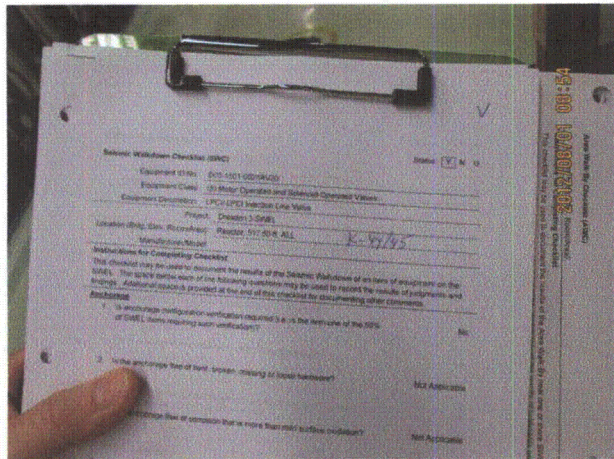
Seismic Walkdown Checklist (SWC)

Equipment ID No.: D03-1501-0021AV20

Equipment Class: (8) Motor-Operated and Solenoid-Operated Valves

Equipment Description: LPCI/ LPCI Injection Line Valve

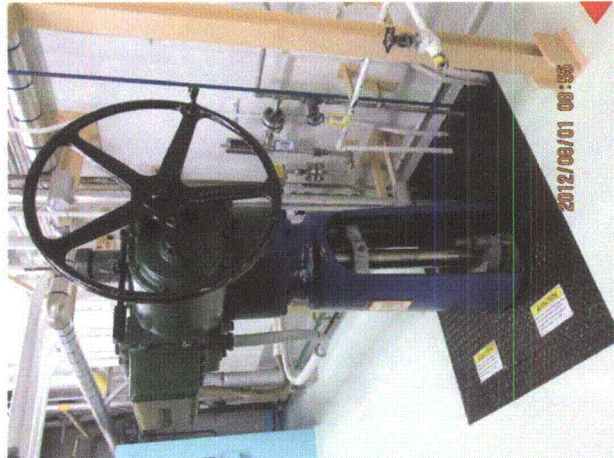
Photos



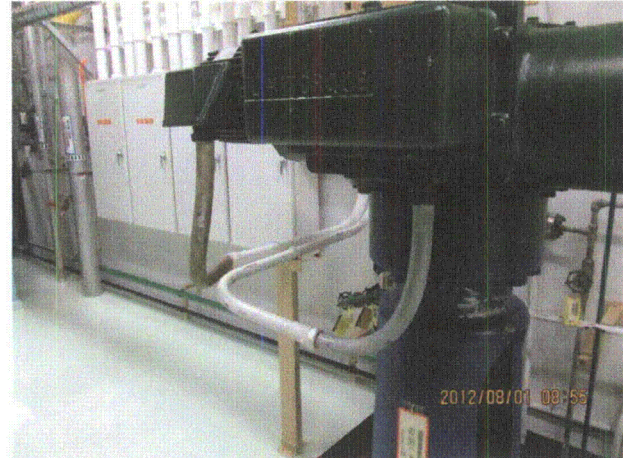
20120801-Dresden-3 052



20120801-Dresden-3 053



20120801-Dresden-3 054



20120801-Dresden-3 055

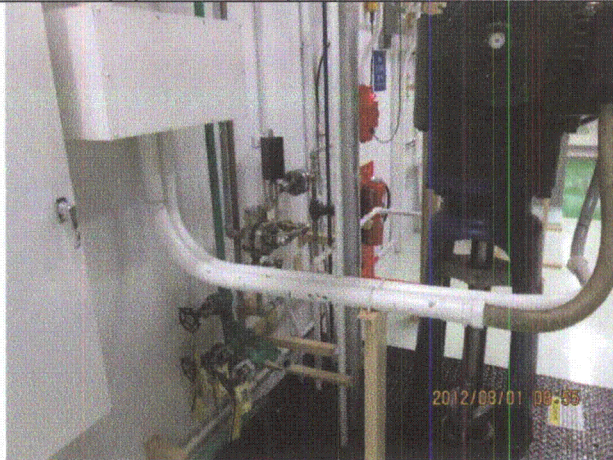
Status: ☒ Y ☐ N ☐ U

Seismic Walkdown Checklist (SWC)

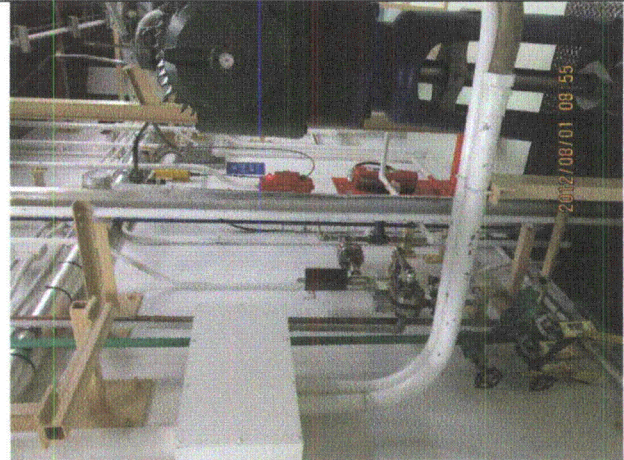
Equipment ID No.: D03-1501-0021AV20

Equipment Class: (8) Motor-Operated and Solenoid-Operated Valves

Equipment Description: LPCI/ LPCI Injection Line Valve



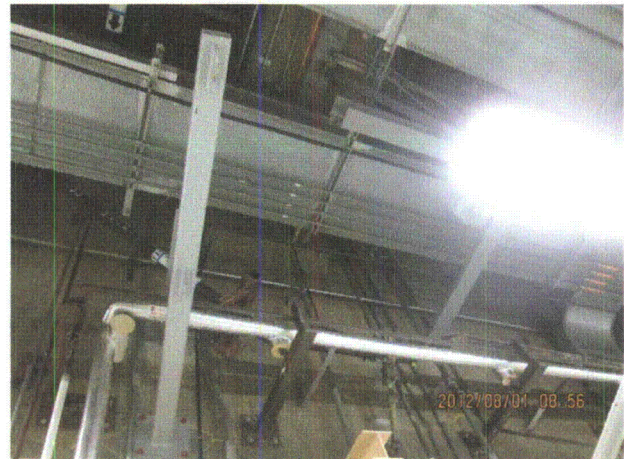
20120801-Dresden-3 056



20120801-Dresden-3 057



20120801-Dresden-3 058



20120801-Dresden-3 059

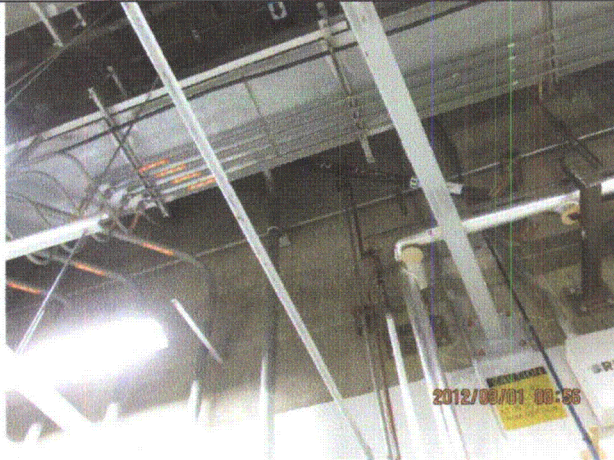
Status: ☒ Y ☐ N ☐ U

Seismic Walkdown Checklist (SWC)

Equipment ID No.: D03-1501-0021AV20

Equipment Class: (8) Motor-Operated and Solenoid-Operated Valves

Equipment Description: LPCI/ LPCI Injection Line Valve



20120801-Dresden-3 060



20120801-Dresden-3 061



20120801-Dresden-3 062



20120801-Dresden-3 063

Status: ☒ Y ☐ N ☐ U

Seismic Walkdown Checklist (SWC)

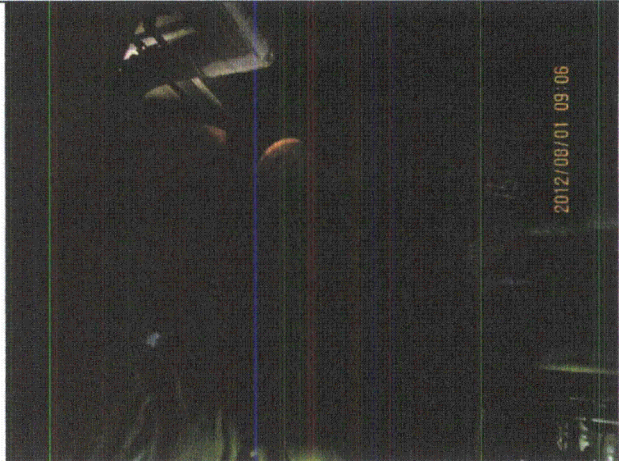
Equipment ID No.: D03-1501-0021AV20

Equipment Class: (8) Motor-Operated and Solenoid-Operated Valves

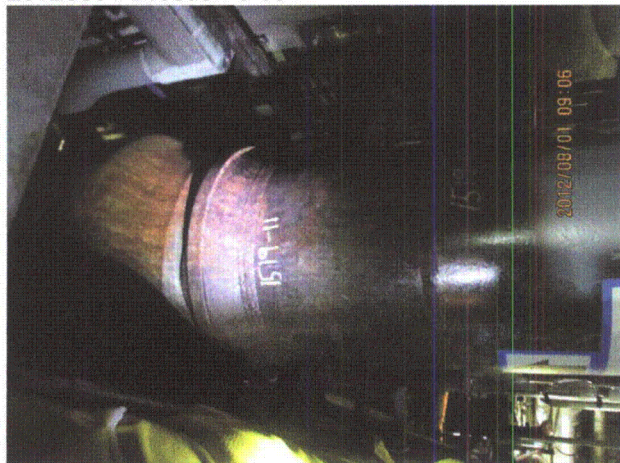
Equipment Description: LPCI/ LPCI Injection Line Valve



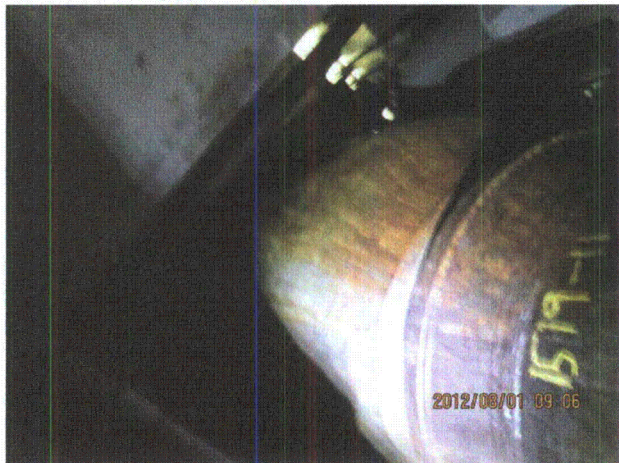
20120801-Dresden-3 064



20120801-Dresden-3 065



20120801-Dresden-3 066



20120801-Dresden-3 067

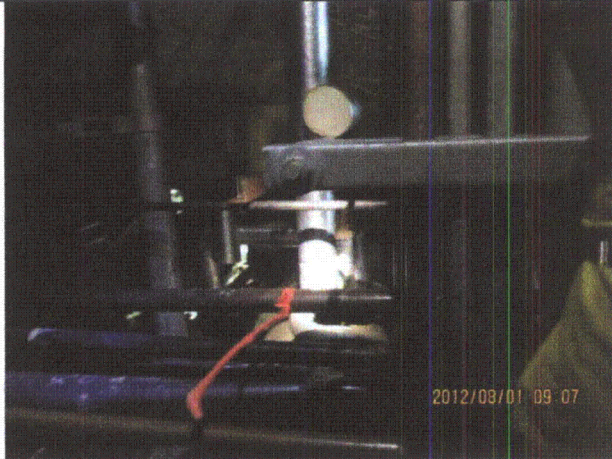
Status: ☒ Y ☐ N ☐ U

Seismic Walkdown Checklist (SWC)

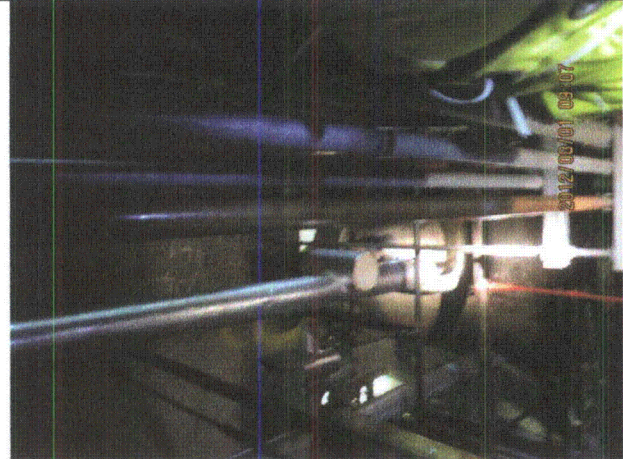
Equipment ID No.: D03-1501-0021AV20

Equipment Class: (8) Motor-Operated and Solenoid-Operated Valves

Equipment Description: LPCI/ LPCI Injection Line Valve



20120801-Dresden-3 068



20120801-Dresden-3 069



20120801-Dresden-3 070



20120801-Dresden-3 071

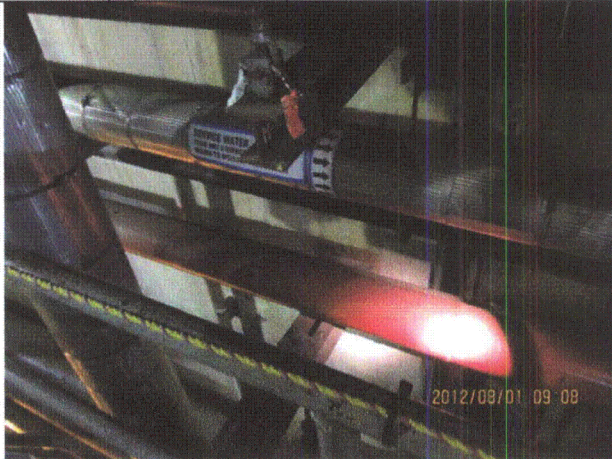
Status: ☒ Y ☐ N ☐ U

Seismic Walkdown Checklist (SWC)

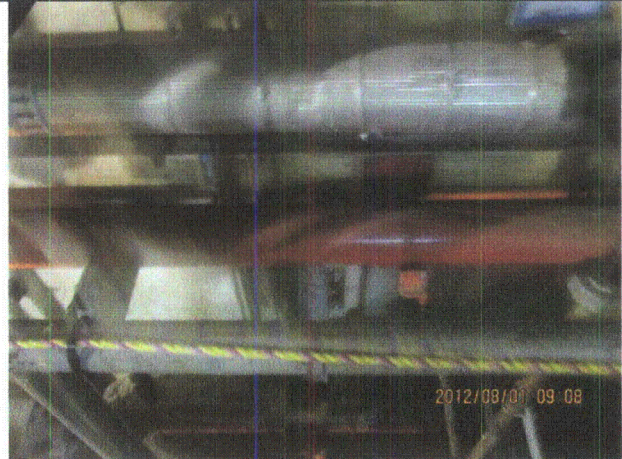
Equipment ID No.: D03-1501-0021AV20

Equipment Class: (8) Motor-Operated and Solenoid-Operated Valves

Equipment Description: LPCI/ LPCI Injection Line Valve



20120801-Dresden-3 072



20120801-Dresden-3 073



20120801-Dresden-3 074



20120801-Dresden-3 075

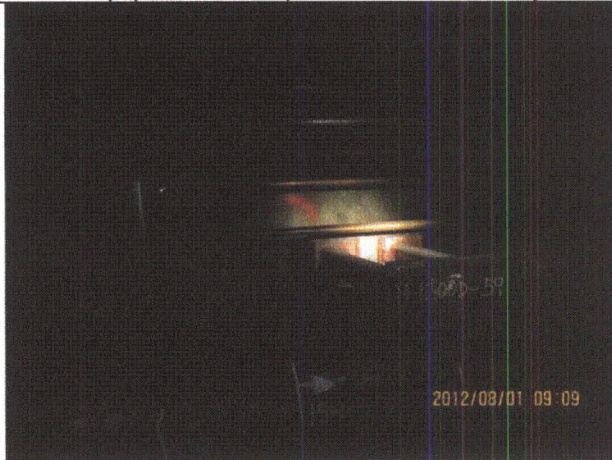
Status: ☒ Y ☐ N ☐ U

Seismic Walkdown Checklist (SWC)

Equipment ID No.: D03-1501-0021AV20

Equipment Class: (8) Motor-Operated and Solenoid-Operated Valves

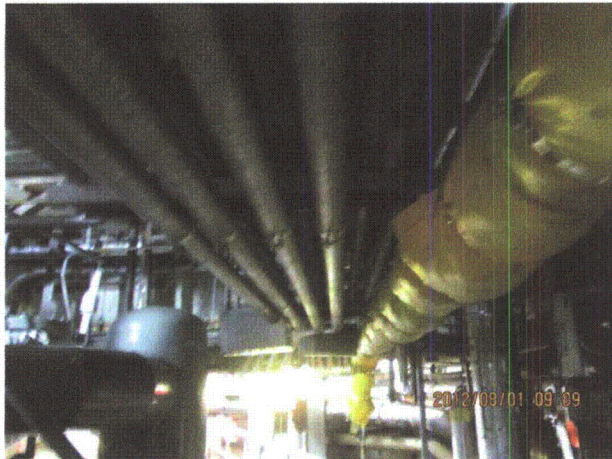
Equipment Description: LPCI/ LPCI Injection Line Valve



20120801-Dresden-3 076



20120801-Dresden-3 077



20120801-Dresden-3 078



20120801-Dresden-3 079

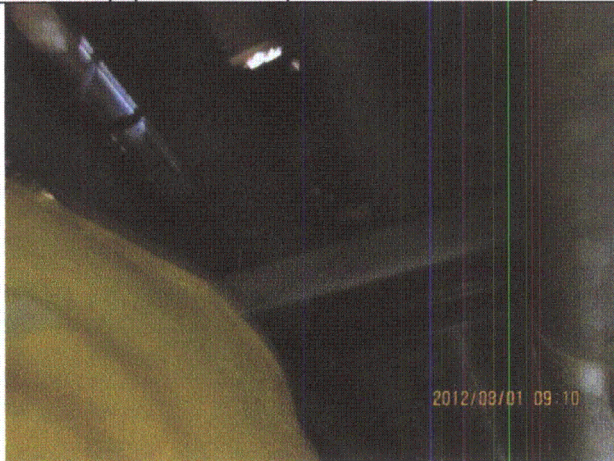
Status: ☒ Y ☐ N ☐ U

Seismic Walkdown Checklist (SWC)

Equipment ID No.: D03-1501-0021AV20

Equipment Class: (8) Motor-Operated and Solenoid-Operated Valves

Equipment Description: LPCI/ LPCI Injection Line Valve



20120801-Dresden-3 080



20120801-Dresden-3 081



20120801-Dresden-3 082



20120801-Dresden-3 083

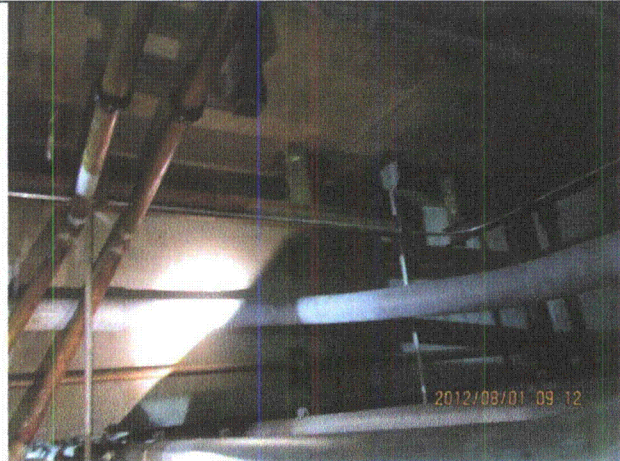
Status: ☒ Y ☐ N ☐ U

Seismic Walkdown Checklist (SWC)

Equipment ID No.: D03-1501-0021AV20

Equipment Class: (8) Motor-Operated and Solenoid-Operated Valves

Equipment Description: LPCI/ LPCI Injection Line Valve



20120801-Dresden-3 085



20120801-Dresden-3 086



20120801-Dresden-3 087

Status: ☒ Y ☐ N ☐ U

Seismic Walkdown Checklist (SWC)

Equipment ID No.: D03-1501-0032AV20

Equipment Class: (8) Motor-Operated and Solenoid-Operated Valves

Equipment Description: LPCI/ LPCI Header Crosstie Line Valve

Project: Dresden 3 SWEL

Location (Bldg, Elev, Room/Area): Reactor, 476.50 ft, ALL

Manufacturer/Model: _____

Instructions for Completing Checklist

This checklist may be used to document the results of the Seismic Walkdown of an item of equipment on the SWEL. The space below each of the following questions may be used to record the results of judgments and findings. Additional space is provided at the end of this checklist for documenting other comments.

Anchorage

1. Is anchorage configuration verification required (i.e., is the item one of the 50% of SWEL items requiring such verification)? No

2. Is the anchorage free of bent, broken, missing or loose hardware? Not Applicable

3. Is the anchorage free of corrosion that is more than mild surface oxidation? Not Applicable

4. Is the anchorage free of visible cracks in the concrete near the anchors? Not Applicable

5. Is the anchorage configuration consistent with plant documentation? (Note: This question only applies if the item is one of the 50% for which an anchorage configuration verification is required.) Not Applicable

6. Based on the above anchorage evaluations, is the anchorage free of potentially adverse seismic conditions? Yes

Status: ☒ Y ☐ N ☐ U

Seismic Walkdown Checklist (SWC)

Equipment ID No.: D03-1501-0032AV20

Equipment Class: (8) Motor-Operated and Solenoid-Operated Valves

Equipment Description: LPCI/ LPCI Header Crosstie Line Valve

Interaction Effects

7. Are soft targets free from impact by nearby equipment or structures? Yes
8. Are overhead equipment, distribution systems, ceiling tiles and lighting, and masonry block walls not likely to collapse onto the equipment? Yes
Overhead light fixtures judged to be acceptable.
9. Do attached lines have adequate flexibility to avoid damage? Yes
10. Based on the above seismic interaction evaluations, is equipment free of potentially adverse seismic interaction effects? Yes

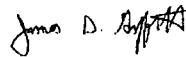
Other Adverse Conditions

11. Have you looked for and found no adverse seismic conditions that could adversely affect the safety functions of the equipment? Yes

Comments


Seismic Walkdown Team: J. Griffith & M. Wodarcyk - 8/1/2012

Evaluated by:



James Griffith

Date: 9/30/2012



Michael Wodarcyk

9/30/2012

Status: ☒ Y ☐ N ☐ U

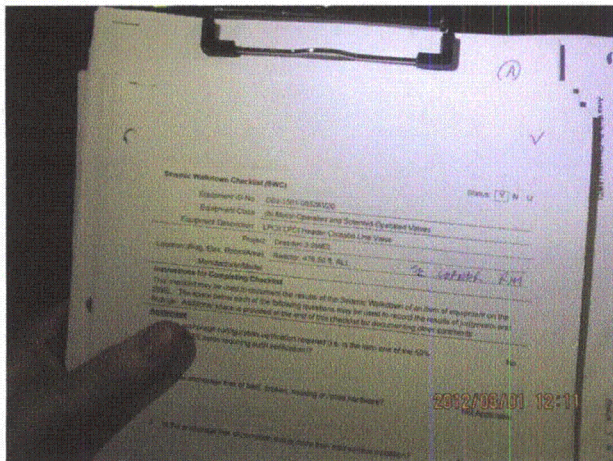
Seismic Walkdown Checklist (SWC)

Equipment ID No.: D03-1501-0032AV20

Equipment Class: (8) Motor-Operated and Solenoid-Operated Valves

Equipment Description: LPCI/ LPCI Header Crosstie Line Valve

Photos



20120801-Dresden-3 255



20120801-Dresden-3 256



20120801-Dresden-3 257



20120801-Dresden-3 258

Status: ☒ Y ☐ N ☐ U

Seismic Walkdown Checklist (SWC)

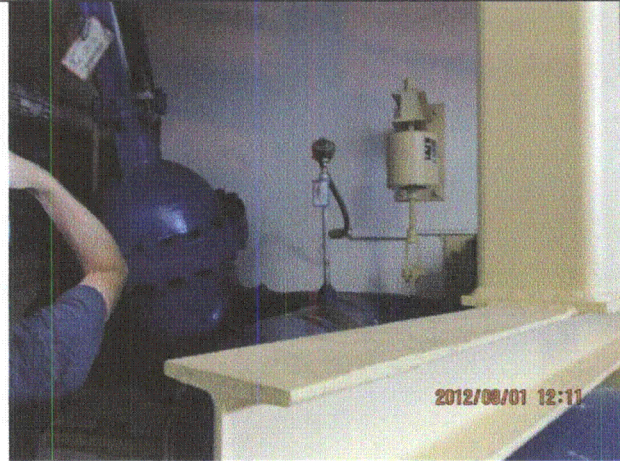
Equipment ID No.: D03-1501-0032AV20

Equipment Class: (8) Motor-Operated and Solenoid-Operated Valves

Equipment Description: LPCI/ LPCI Header Crosstie Line Valve



20120801-Dresden-3 259



20120801-Dresden-3 260



20120801-Dresden-3 261



20120801-Dresden-3 262

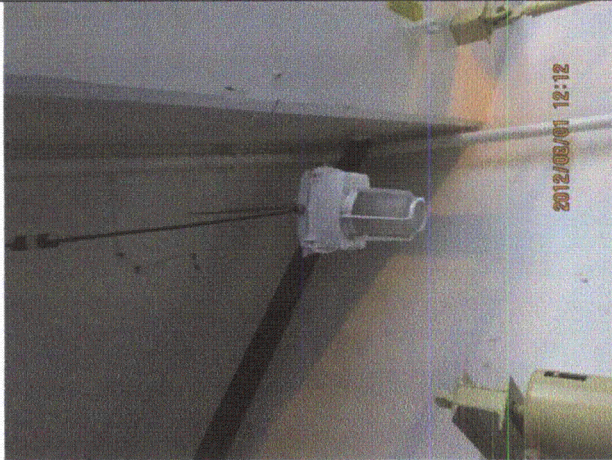
Status: ☒ Y ☐ N ☐ U

Seismic Walkdown Checklist (SWC)

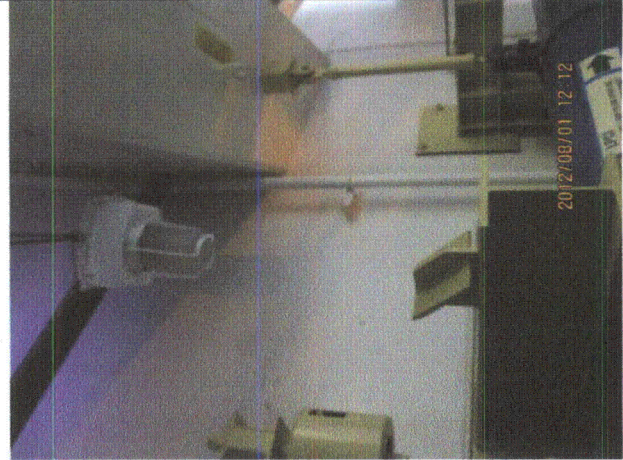
Equipment ID No.: D03-1501-0032AV20

Equipment Class: (8) Motor-Operated and Solenoid-Operated Valves

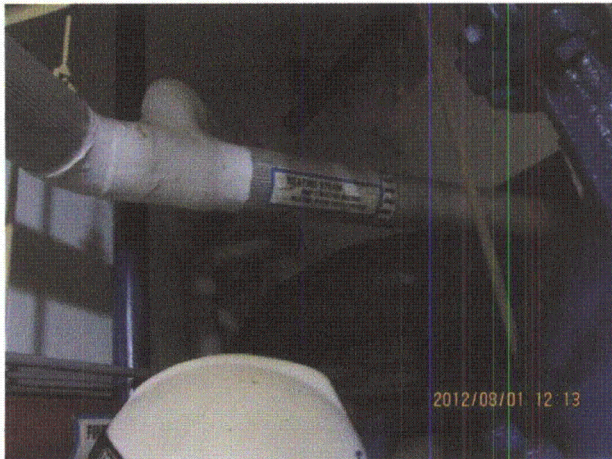
Equipment Description: LPCI/ LPCI Header Crosstie Line Valve



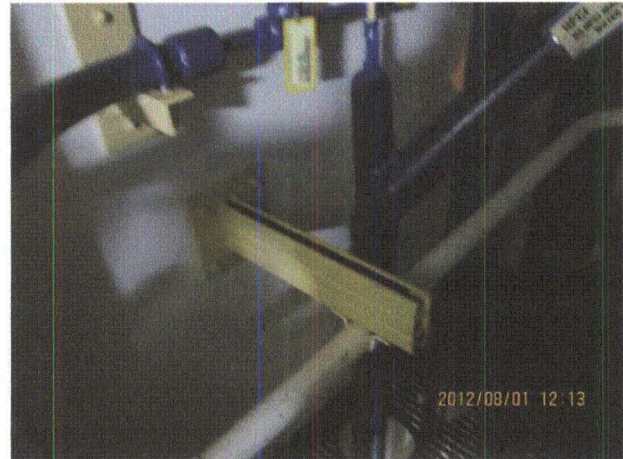
20120801-Dresden-3 263



20120801-Dresden-3 264



20120801-Dresden-3 265



20120801-Dresden-3 266

Status: ☒ Y ☐ N ☐ U

Seismic Walkdown Checklist (SWC)

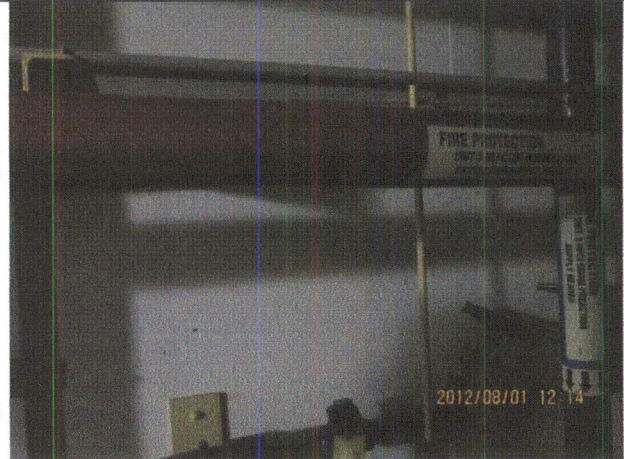
Equipment ID No.: D03-1501-0032AV20

Equipment Class: (8) Motor-Operated and Solenoid-Operated Valves

Equipment Description: LPCI/ LPCI Header Crosstie Line Valve



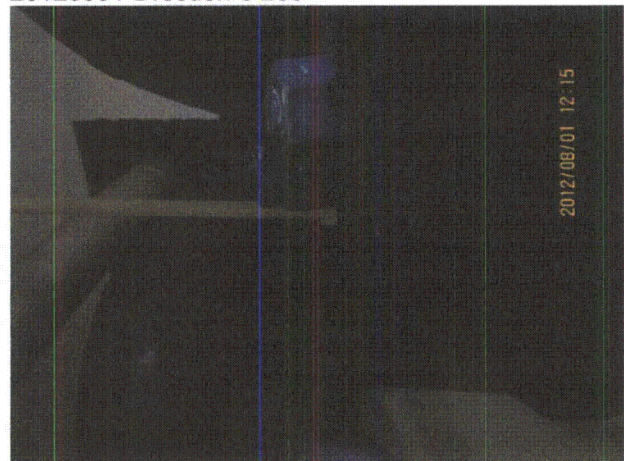
20120801-Dresden-3 267



20120801-Dresden-3 268



20120801-Dresden-3 269



20120801-Dresden-3 270

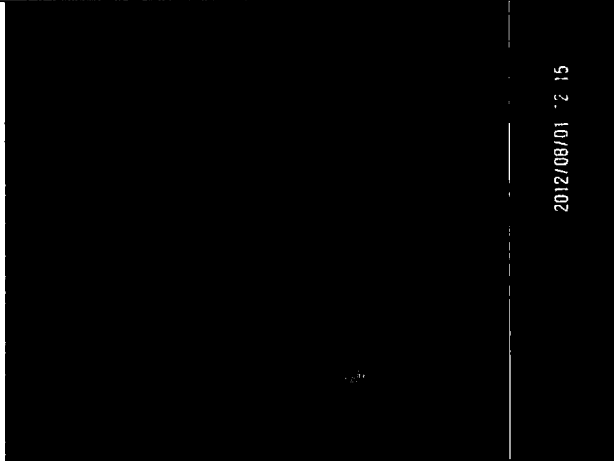
Status: ☒ Y ☐ N ☐ U

Seismic Walkdown Checklist (SWC)

Equipment ID No.: D03-1501-0032AV20

Equipment Class: (8) Motor-Operated and Solenoid-Operated Valves

Equipment Description: LPCI/ LPCI Header Crosstie Line Valve



2012/08/01 12:15



2012/08/01 12:15

20120801-Dresden-3 271

20120801-Dresden-3 272

Status: ☒ Y ☐ N ☐ U

Seismic Walkdown Checklist (SWC)

Equipment ID No.: D03-1501-0044AP30

Equipment Class: (5) Horizontal Pumps

Equipment Description: CCSW/ CCSW Pump "A"

Project: Dresden 3 SWEL

Location (Bldg, Elev, Room/Area): Turbine, 495.00 ft, ALL

Manufacturer/Model: _____

Instructions for Completing Checklist

This checklist may be used to document the results of the Seismic Walkdown of an item of equipment on the SWEL. The space below each of the following questions may be used to record the results of judgments and findings. Additional space is provided at the end of this checklist for documenting other comments.

Anchorage

1. Is anchorage configuration verification required (i.e., is the item one of the 50% of SWEL items requiring such verification)? Yes

2. Is the anchorage free of bent, broken, missing or loose hardware? Yes

3. Is the anchorage free of corrosion that is more than mild surface oxidation? Yes

4. Is the anchorage free of visible cracks in the concrete near the anchors? Yes
Minor shrinkage cracks in floor judged to be acceptable.

5. Is the anchorage configuration consistent with plant documentation? (Note: This question only applies if the item is one of the 50% for which an anchorage configuration verification is required.) Yes

6. Based on the above anchorage evaluations, is the anchorage free of potentially adverse seismic conditions? Yes

Status: ☒ Y ☐ N ☐ U

Seismic Walkdown Checklist (SWC)

Equipment ID No.: D03-1501-0044AP30

Equipment Class: (5) Horizontal Pumps

Equipment Description: CCSW/ CCSW Pump "A"

Interaction Effects

7. Are soft targets free from impact by nearby equipment or structures? Yes

Tube touches pump casing; judged acceptable due to flexibility of tube and robustness of pump casing.

8. Are overhead equipment, distribution systems, ceiling tiles and lighting, and masonry block walls not likely to collapse onto the equipment? Yes

One overhead light fixture above with one open S-hook on one chain at one end of fixture. Other chain at same end has a closed S-hook. Light fixture judged to be acceptable.

9. Do attached lines have adequate flexibility to avoid damage? Yes

10. Based on the above seismic interaction evaluations, is equipment free of potentially adverse seismic interaction effects? Yes

Other Adverse Conditions

11. Have you looked for and found no adverse seismic conditions that could adversely affect the safety functions of the equipment? Yes

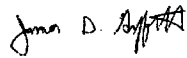
Comments

SEWS Anchorage Notes:

Pump bolted with six 7/8" Cast-in-place bolts (3 on each side).

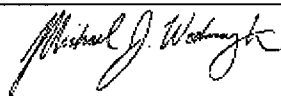
Seismic Walkdown Team: J. Griffith & M. Wodarczyk - 7/31/2012

Evaluated by:



James Griffith

Date: 9/30/2012



Michael Wodarczyk

9/30/2012

Status: ☒ Y ☐ N ☐ U

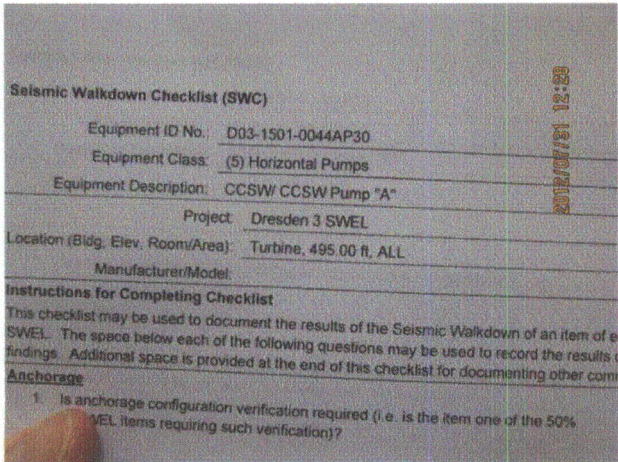
Seismic Walkdown Checklist (SWC)

Equipment ID No.: D03-1501-0044AP30

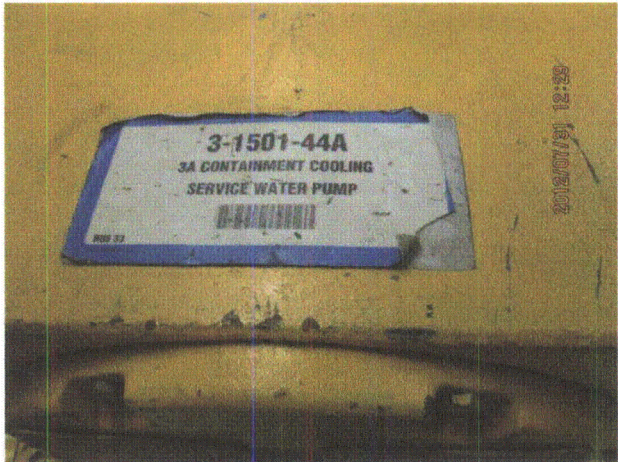
Equipment Class: (5) Horizontal Pumps

Equipment Description: CCSW/ CCSW Pump "A"

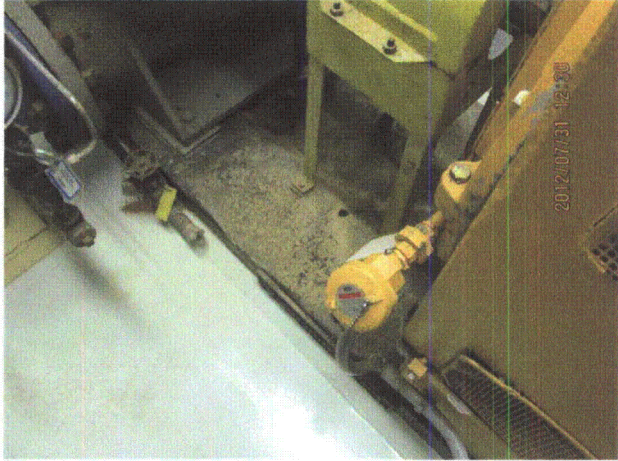
Photos



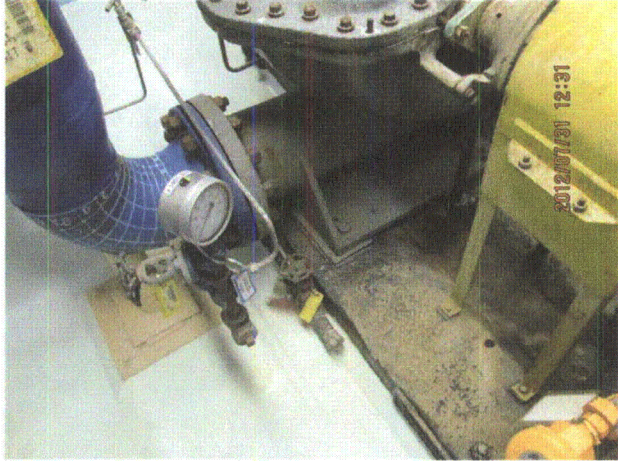
20120731-Dresden-3 298



20120731-Dresden-3 299



20120731-Dresden-3 300



20120731-Dresden-3 301

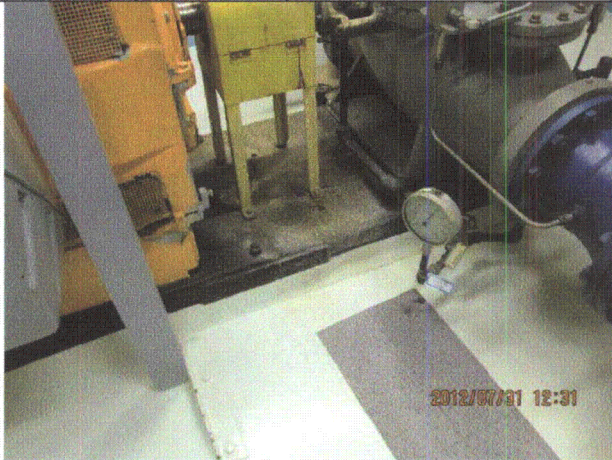
Status: ☒ Y ☐ N ☐ U

Seismic Walkdown Checklist (SWC)

Equipment ID No.: D03-1501-0044AP30

Equipment Class: (5) Horizontal Pumps

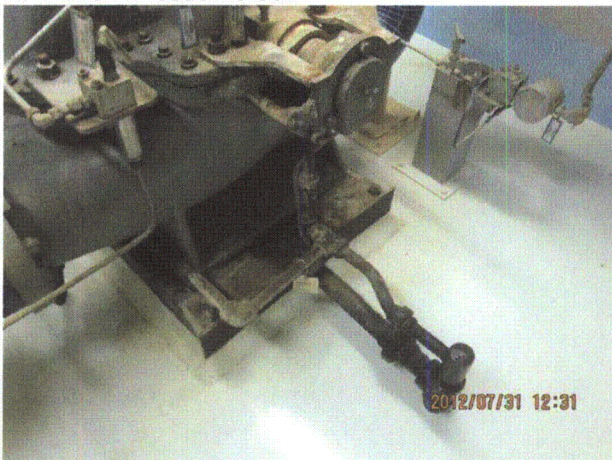
Equipment Description: CCSW/ CCSW Pump "A"



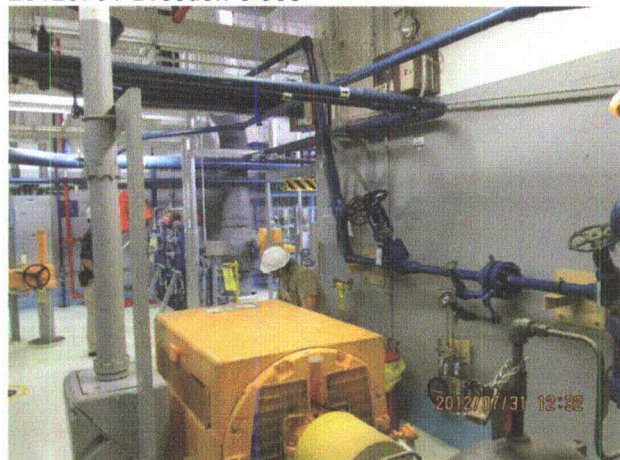
20120731-Dresden-3 302



20120731-Dresden-3 303



20120731-Dresden-3 304



20120731-Dresden-3 305

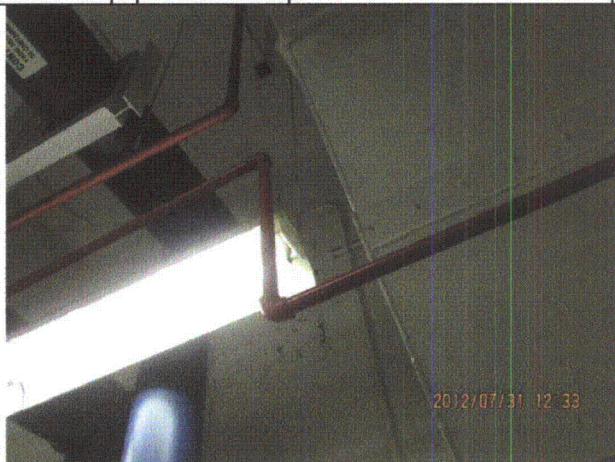
Status: ☒ Y ☐ N ☐ U

Seismic Walkdown Checklist (SWC)

Equipment ID No.: D03-1501-0044AP30

Equipment Class: (5) Horizontal Pumps

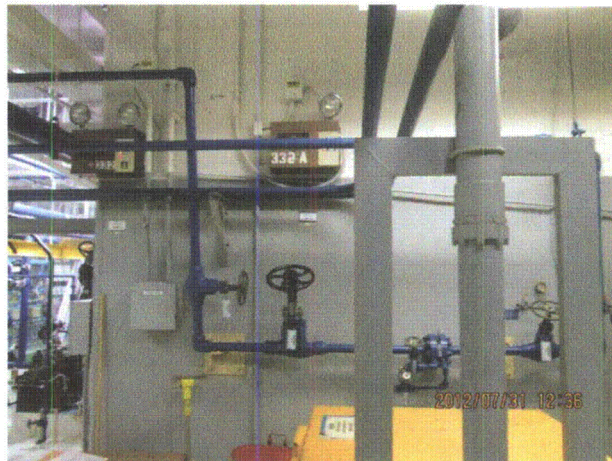
Equipment Description: CCSW/ CCSW Pump "A"



20120731-Dresden-3 306



20120731-Dresden-3 308



20120731-Dresden-3 309

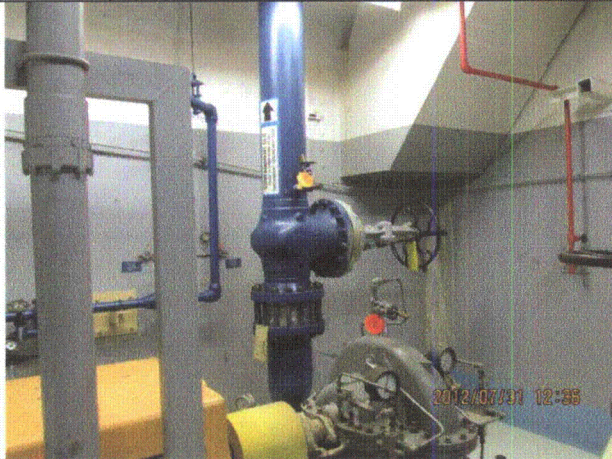
Status: ☒ Y ☐ N ☐ U

Seismic Walkdown Checklist (SWC)

Equipment ID No.: D03-1501-0044AP30

Equipment Class: (5) Horizontal Pumps

Equipment Description: CCSW/ CCSW Pump "A"



20120731-Dresden-3 310



20120731-Dresden-3 311



20120731-Dresden-3 312



20120731-Dresden-3 313

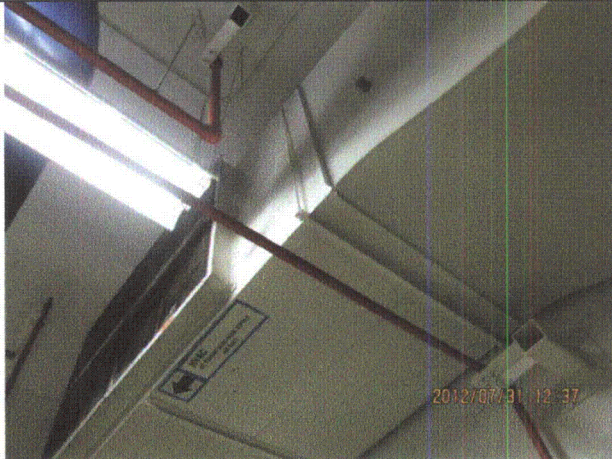
Status: ☒ Y ☐ N ☐ U

Seismic Walkdown Checklist (SWC)

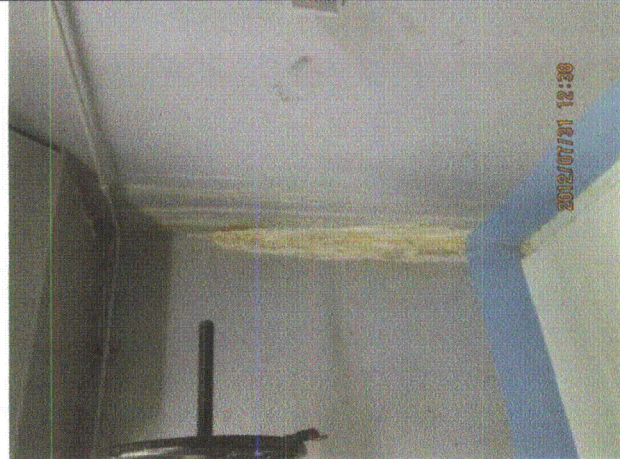
Equipment ID No.: D03-1501-0044AP30

Equipment Class: (5) Horizontal Pumps

Equipment Description: CCSW/ CCSW Pump "A"



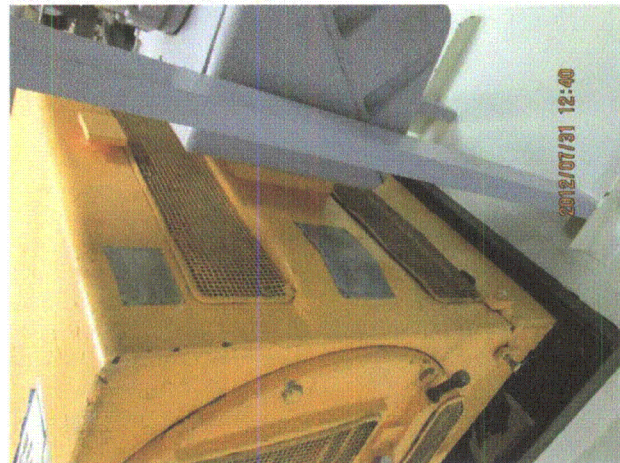
20120731-Dresden-3 314



20120731-Dresden-3 315



20120731-Dresden-3 316



20120731-Dresden-3 317

Status: ☒ Y ☐ N ☐ U

Seismic Walkdown Checklist (SWC)

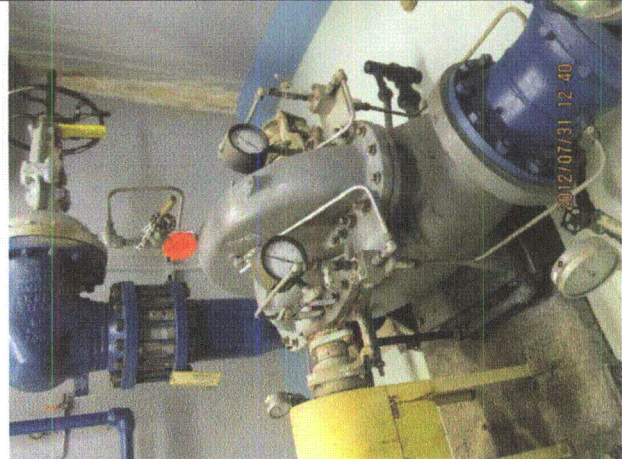
Equipment ID No.: D03-1501-0044AP30

Equipment Class: (5) Horizontal Pumps

Equipment Description: CCSW/ CCSW Pump "A"



20120731-Dresden-3 318



20120731-Dresden-3 319



20120731-Dresden-3 320



20120731-Dresden-3 321

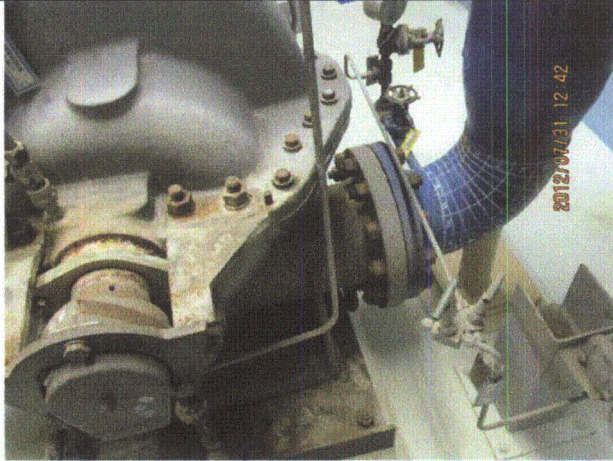
Status: ☒ Y ☐ N ☐ U

Seismic Walkdown Checklist (SWC)

Equipment ID No.: D03-1501-0044AP30

Equipment Class: (5) Horizontal Pumps

Equipment Description: CCSW/ CCSW Pump "A"



20120731-Dresden-3 322

Status: ☒ Y ☐ N ☐ U

Seismic Walkdown Checklist (SWC)

Equipment ID No.: D03-1502-A----P30

Equipment Class: (6) Vertical Pumps

Equipment Description: LPCI/ LPCI Injection Pump "A"

Project: Dresden 3 SWEL

Location (Bldg, Elev, Room/Area): Reactor, 476.50 ft, ALL

Manufacturer/Model: _____

Instructions for Completing Checklist

This checklist may be used to document the results of the Seismic Walkdown of an item of equipment on the SWEL. The space below each of the following questions may be used to record the results of judgments and findings. Additional space is provided at the end of this checklist for documenting other comments.

Anchorage

1. Is anchorage configuration verification required (i.e., is the item one of the 50% of SWEL items requiring such verification)? Yes

2. Is the anchorage free of bent, broken, missing or loose hardware? Yes

3. Is the anchorage free of corrosion that is more than mild surface oxidation? Yes

4. Is the anchorage free of visible cracks in the concrete near the anchors? Yes
Minor grout pad cracking near bolts judged to be acceptable because bolts are cast in place into the concrete slab.

5. Is the anchorage configuration consistent with plant documentation? (Note: This question only applies if the item is one of the 50% for which an anchorage configuration verification is required.) Yes

6. Based on the above anchorage evaluations, is the anchorage free of potentially adverse seismic conditions? Yes

Status: ☒ Y ☐ N ☐ U

Seismic Walkdown Checklist (SWC)

Equipment ID No.: D03-1502-A----P30

Equipment Class: (6) Vertical Pumps

Equipment Description: LPCI/ LPCI Injection Pump "A"

Interaction Effects

- | | |
|---|-----|
| 7. Are soft targets free from impact by nearby equipment or structures? | Yes |
| 8. Are overhead equipment, distribution systems, ceiling tiles and lighting, and masonry block walls not likely to collapse onto the equipment? | Yes |
| 9. Do attached lines have adequate flexibility to avoid damage? | Yes |
| 10. Based on the above seismic interaction evaluations, is equipment free of potentially adverse seismic interaction effects? | Yes |

Other Adverse Conditions

- | | |
|--|-----|
| 11. Have you looked for and found no adverse seismic conditions that could adversely affect the safety functions of the equipment? | Yes |
|--|-----|

Comments

SEWS Anchorage Notes:

Vertical pump is anchored with four 1" Cast-in-Place bolts.

Seismic Walkdown Team: J. Griffith & M. Wodarczyk - 8/1/2012

Evaluated by:  James Griffith

Date: 9/30/2012



Michael Wodarczyk

9/30/2012

Status: ☒ Y ☐ N ☐ U

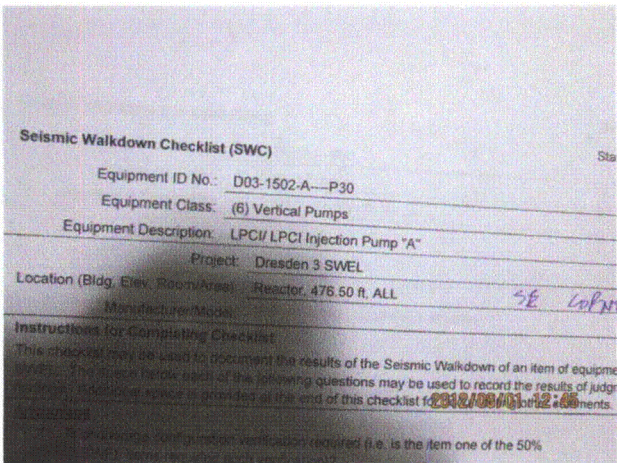
Seismic Walkdown Checklist (SWC)

Equipment ID No.: D03-1502-A---P30

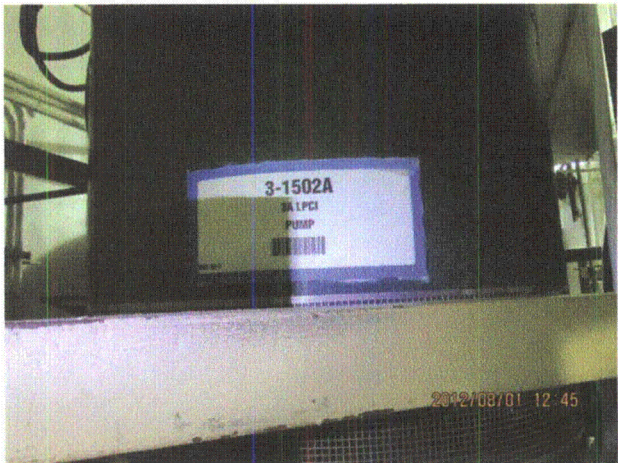
Equipment Class: (6) Vertical Pumps

Equipment Description: LPCI/ LPCI Injection Pump "A"

Photos



20120801-Dresden-3 330



20120801-Dresden-3 331



20120801-Dresden-3 333

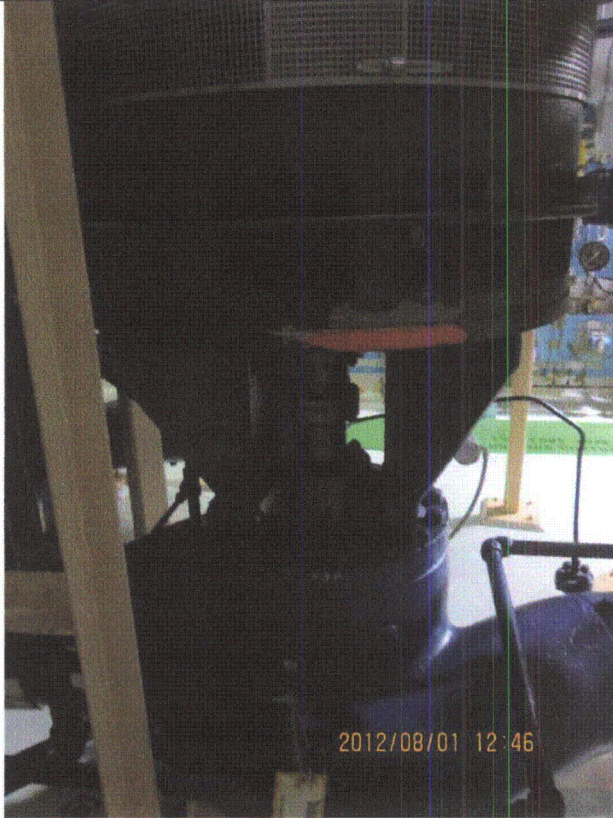
Status: ☒ Y ☐ N ☐ U

Seismic Walkdown Checklist (SWC)

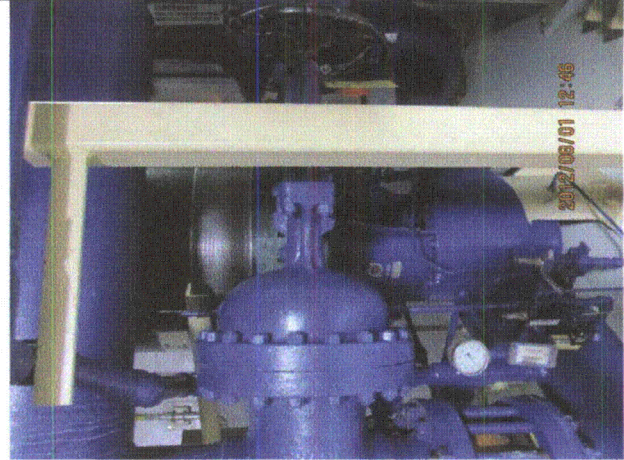
Equipment ID No.: D03-1502-A---P30

Equipment Class: (6) Vertical Pumps

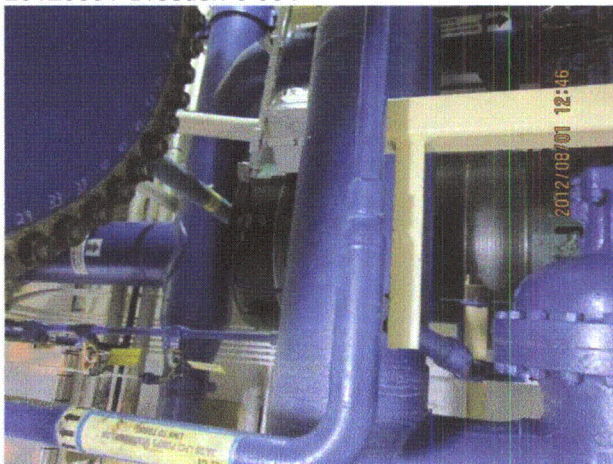
Equipment Description: LPCI/ LPCI Injection Pump "A"



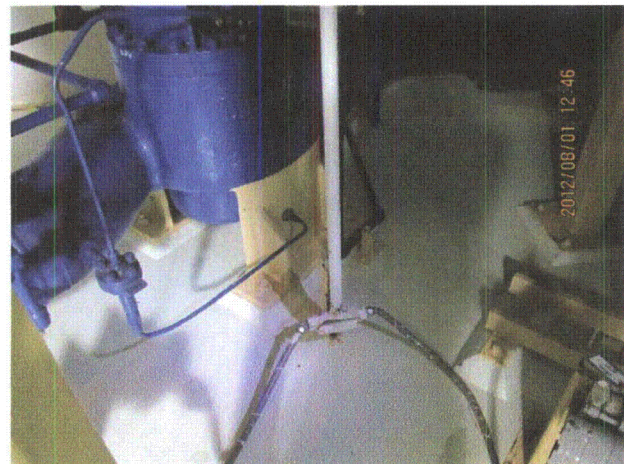
20120801-Dresden-3 334



20120801-Dresden-3 335



20120801-Dresden-3 336



20120801-Dresden-3 337

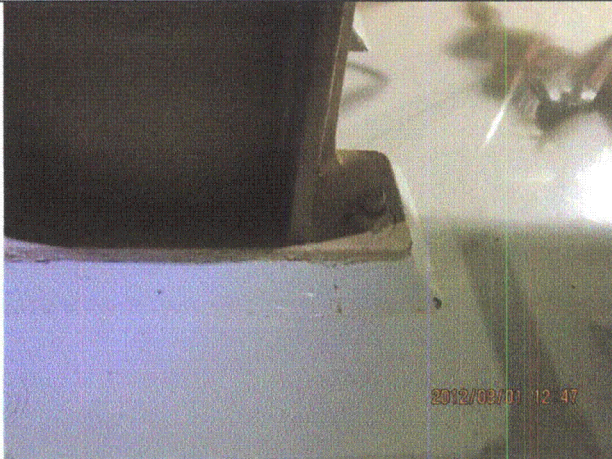
Status: ☒ Y ☐ N ☐ U

Seismic Walkdown Checklist (SWC)

Equipment ID No.: D03-1502-A---P30

Equipment Class: (6) Vertical Pumps

Equipment Description: LPCI/ LPCI Injection Pump "A"



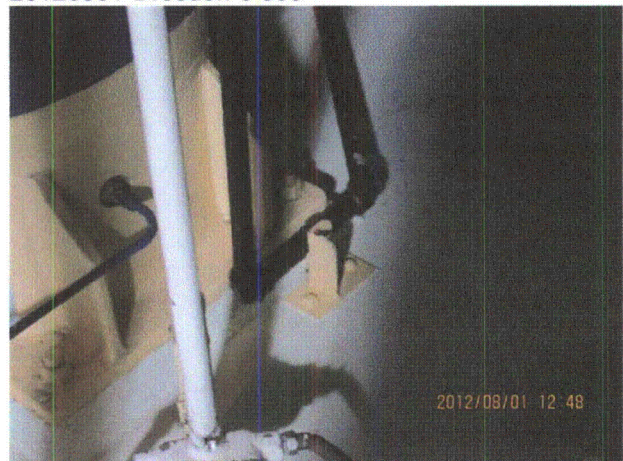
20120801-Dresden-3 338



20120801-Dresden-3 339



20120801-Dresden-3 340



20120801-Dresden-3 341

Status: ☒ Y ☐ N ☐ U

Seismic Walkdown Checklist (SWC)

Equipment ID No.: D03-1502-A---P30

Equipment Class: (6) Vertical Pumps

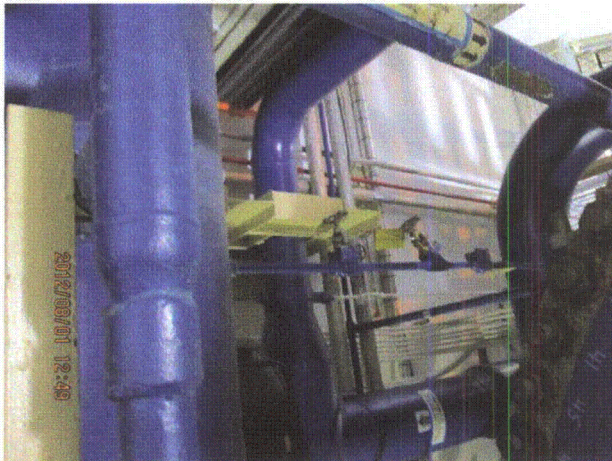
Equipment Description: LPCI/ LPCI Injection Pump "A"



20120801-Dresden-3 342



20120801-Dresden-3 343



20120801-Dresden-3 344



20120801-Dresden-3 345

Status: ☒ Y ☐ N ☐ U

Seismic Walkdown Checklist (SWC)

Equipment ID No.: D03-1502-A----P30

Equipment Class: (6) Vertical Pumps

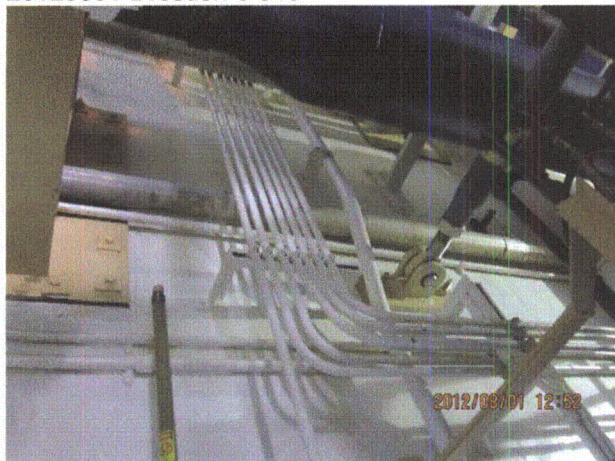
Equipment Description: LPCI/ LPCI Injection Pump "A"



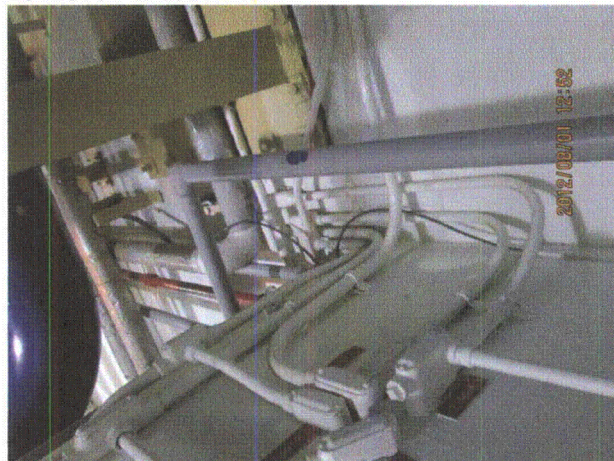
20120801-Dresden-3 346



20120801-Dresden-3 347



20120801-Dresden-3 348



20120801-Dresden-3 349

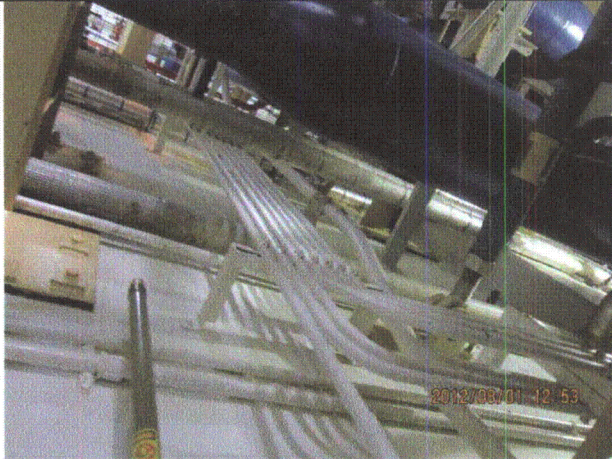
Status: ☒ Y ☐ N ☐ U

Seismic Walkdown Checklist (SWC)

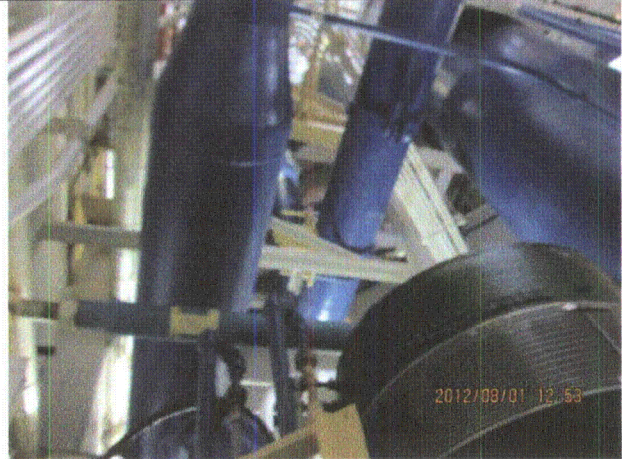
Equipment ID No.: D03-1502-A---P30

Equipment Class: (6) Vertical Pumps

Equipment Description: LPCI/ LPCI Injection Pump "A"



20120801-Dresden-3 350



20120801-Dresden-3 351



20120801-Dresden-3 352



20120801-Dresden-3 353

Status: ☒ Y ☐ N ☐ U

Seismic Walkdown Checklist (SWC)

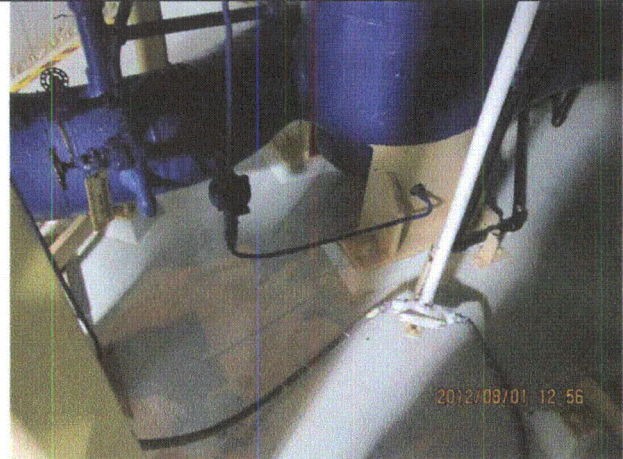
Equipment ID No.: D03-1502-A---P30

Equipment Class: (6) Vertical Pumps

Equipment Description: LPCI/ LPCI Injection Pump "A"



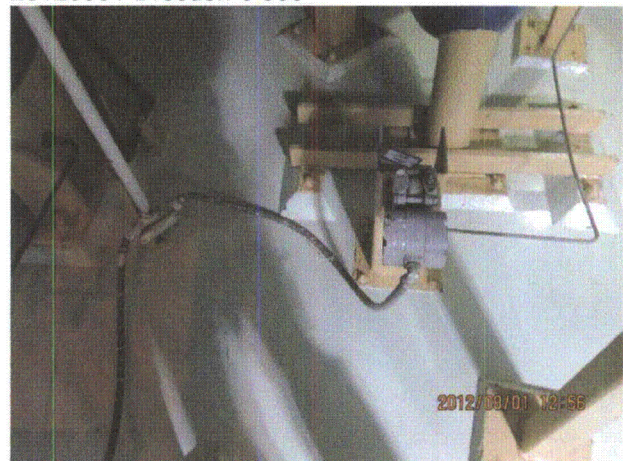
20120801-Dresden-3 354



20120801-Dresden-3 355



20120801-Dresden-3 356



20120801-Dresden-3 357

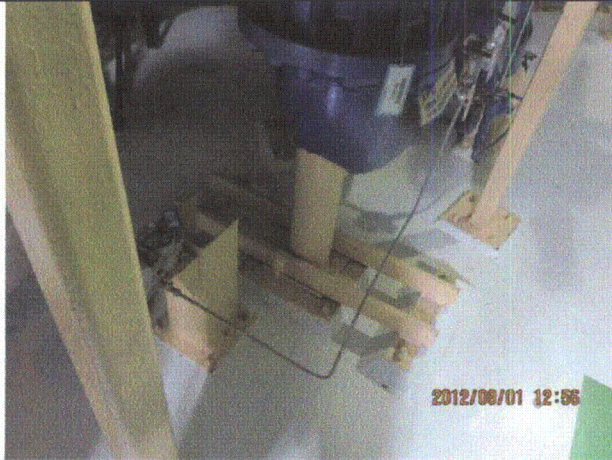
Status: ☒ Y ☐ N ☐ U

Seismic Walkdown Checklist (SWC)

Equipment ID No.: D03-1502-A----P30

Equipment Class: (6) Vertical Pumps

Equipment Description: LPCI/ LPCI Injection Pump "A"



20120801-Dresden-3 358

Status: ☒ Y ☐ N ☐ U

Seismic Walkdown Checklist (SWC)

Equipment ID No.: D03-1503-A---H15

Equipment Class: (21) Tanks and Heat Exchangers

Equipment Description: LPCI/ LPCI Heat Exchanger

Project: Dresden 3 SWEL

Location (Bldg, Elev, Room/Area): Reactor, 476.50 ft, ALL

Manufacturer/Model:

Instructions for Completing Checklist

This checklist may be used to document the results of the Seismic Walkdown of an item of equipment on the SWEL. The space below each of the following questions may be used to record the results of judgments and findings. Additional space is provided at the end of this checklist for documenting other comments.

Anchorage

1. Is anchorage configuration verification required (i.e., is the item one of the 50% of SWEL items requiring such verification)? Yes
2. Is the anchorage free of bent, broken, missing or loose hardware? Yes
3. Is the anchorage free of corrosion that is more than mild surface oxidation? Yes
4. Is the anchorage free of visible cracks in the concrete near the anchors? Not Applicable
Mounted directly to gallery steel.
5. Is the anchorage configuration consistent with plant documentation? (Note: This question only applies if the item is one of the 50% for which an anchorage configuration verification is required.) Yes
6. Based on the above anchorage evaluations, is the anchorage free of potentially adverse seismic conditions? Yes

Status: ☒ Y ☐ N ☐ U

Seismic Walkdown Checklist (SWC)

Equipment ID No.: D03-1503-A----H15

Equipment Class: (21) Tanks and Heat Exchangers

Equipment Description: LPCI/ LPCI Heat Exchanger

Interaction Effects

7. Are soft targets free from impact by nearby equipment or structures? Yes

8. Are overhead equipment, distribution systems, ceiling tiles and lighting, and masonry block walls not likely to collapse onto the equipment? Yes

IR 1396014:

LIGHT FIXTURE CONNECTION DEFICIENCY

During the Seismic Walkdowns it was identified that a light fixture just west of the 3A Hx in the SE LPCI Corner Room had a detached chain on one side of the fixture. However, the other chain at the same end of the fixture was securely attached and the two chains at the other end of the fixture were also securely attached. Therefore, the fixture is judged to be acceptable.

9. Do attached lines have adequate flexibility to avoid damage? Yes

10. Based on the above seismic interaction evaluations, is equipment free of potentially adverse seismic interaction effects? Yes

Other Adverse Conditions

11. Have you looked for and found no adverse seismic conditions that could adversely affect the safety functions of the equipment? Yes

Comments

SEWS Anchorage Notes:

SRT: R. P. Kennedy & J. D. Stevenson, 3/4-3/8/96.

This vertical heat exchanger is 60" in diameter and supported at approx. 2/3 its height by a floor system composed of wide flange beams.

Seismic Walkdown Team: J. Griffith & M. Wodarczyk - 8/1/2012

Status: ☒ Y ☐ N ☐ U

Seismic Walkdown Checklist (SWC)

Equipment ID No.: D03-1503-A---H15

Equipment Class: (21) Tanks and Heat Exchangers

Equipment Description: LPCI/ LPCI Heat Exchanger

Evaluated by: James D. Griffith James Griffith

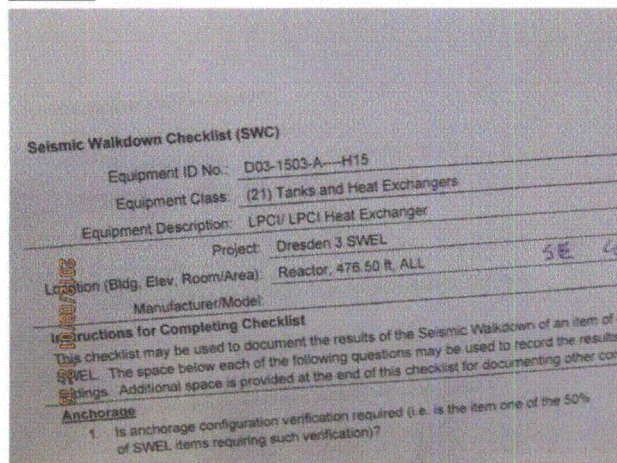
Date: 9/30/2012

Michael J. Wodarczyk

Michael Wodarczyk

9/30/2012

Photos



20120801-Dresden-3 273



20120801-Dresden-3 274



20120801-Dresden-3 276

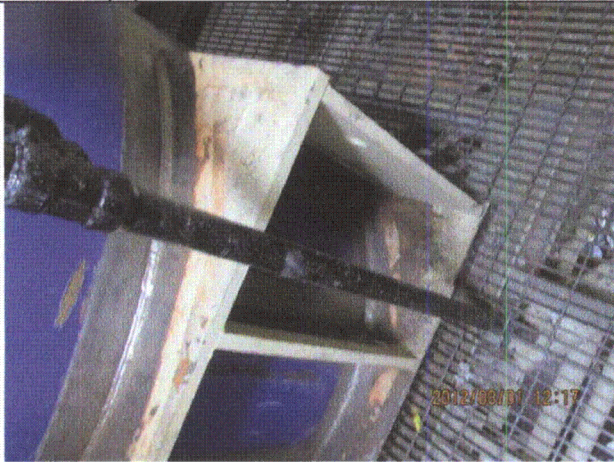
Status: ☒ Y ☐ N ☐ U

Seismic Walkdown Checklist (SWC)

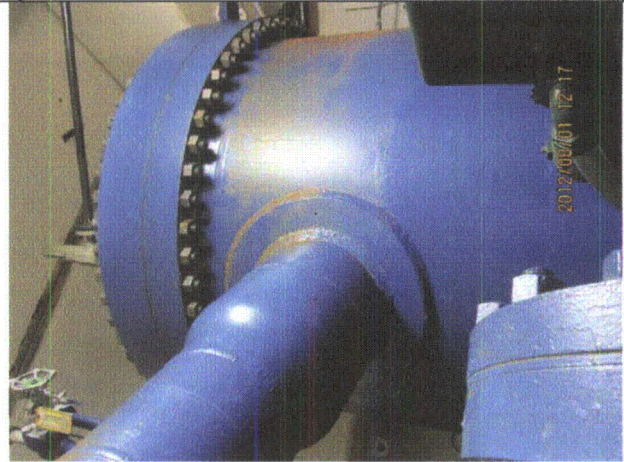
Equipment ID No.: D03-1503-A---H15

Equipment Class: (21) Tanks and Heat Exchangers

Equipment Description: LPCI/ LPCI Heat Exchanger



20120801-Dresden-3 277



20120801-Dresden-3 278



20120801-Dresden-3 279



20120801-Dresden-3 280

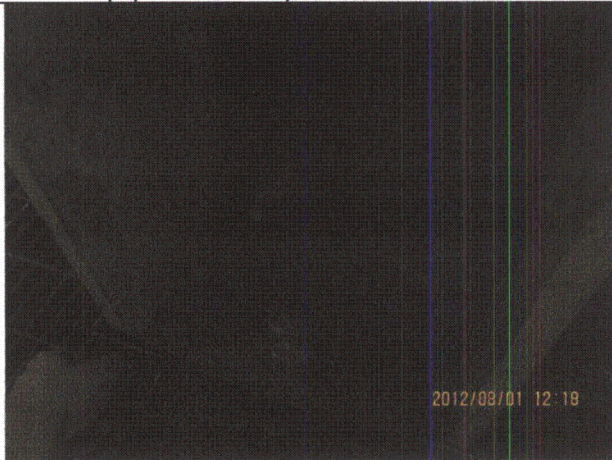
Status: ☒ Y ☐ N ☐ U

Seismic Walkdown Checklist (SWC)

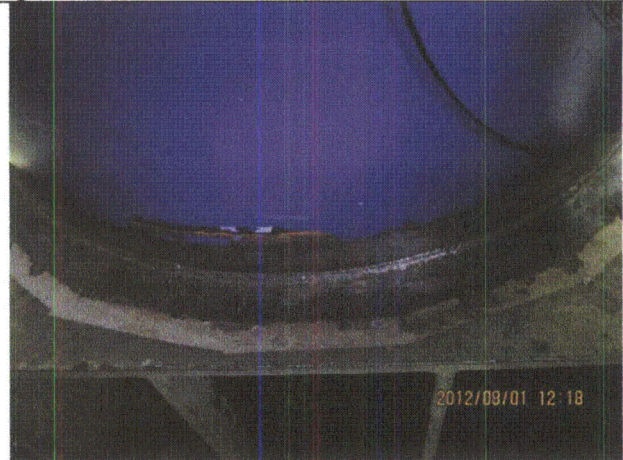
Equipment ID No.: D03-1503-A---H15

Equipment Class: (21) Tanks and Heat Exchangers

Equipment Description: LPCI/ LPCI Heat Exchanger



20120801-Dresden-3 281



20120801-Dresden-3 282



20120801-Dresden-3 283



20120801-Dresden-3 284

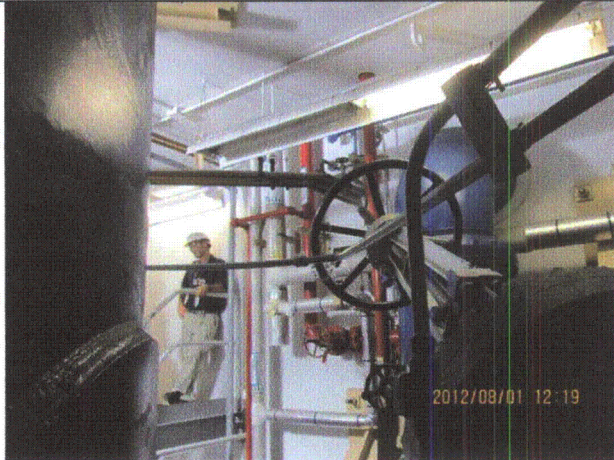
Status: ☒ Y ☐ N ☐ U

Seismic Walkdown Checklist (SWC)

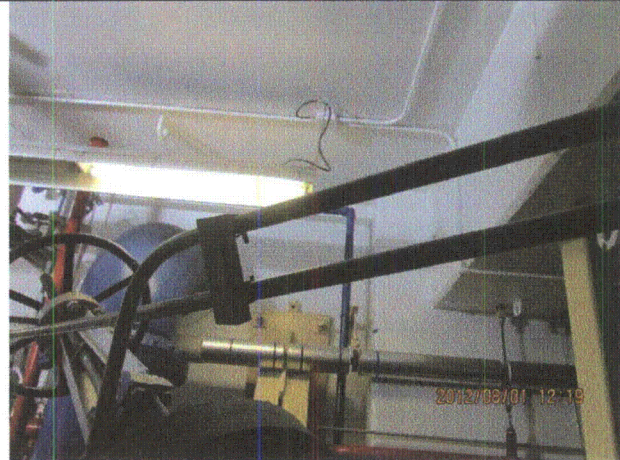
Equipment ID No.: D03-1503-A---H15

Equipment Class: (21) Tanks and Heat Exchangers

Equipment Description: LPCI/ LPCI Heat Exchanger



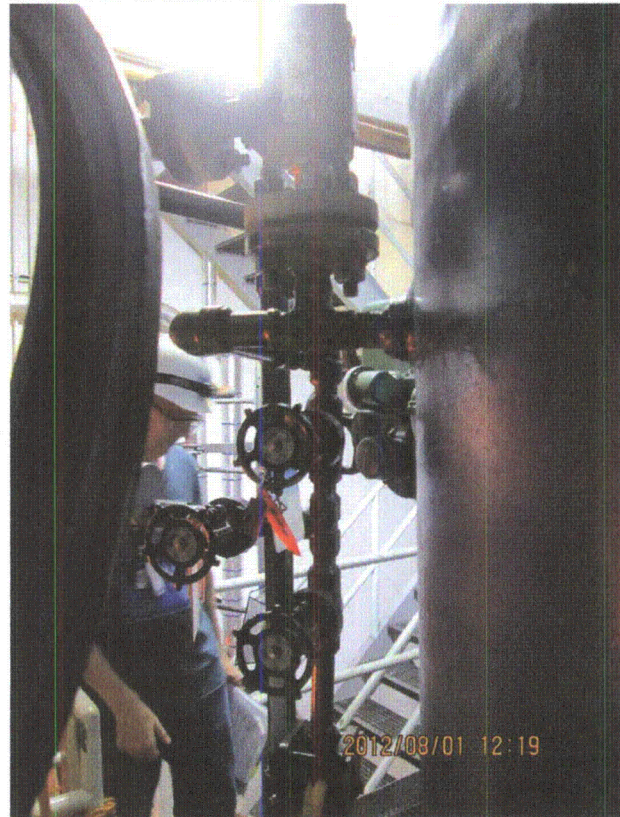
20120801-Dresden-3 285



20120801-Dresden-3 286



20120801-Dresden-3 287



20120801-Dresden-3 288

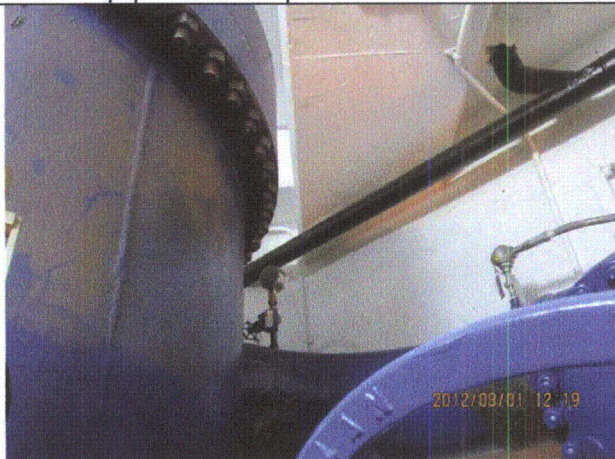
Status: ☒ Y ☐ N ☐ U

Seismic Walkdown Checklist (SWC)

Equipment ID No.: D03-1503-A---H15

Equipment Class: (21) Tanks and Heat Exchangers

Equipment Description: LPCI/ LPCI Heat Exchanger



20120801-Dresden-3 289



20120801-Dresden-3 290



20120801-Dresden-3 291



20120801-Dresden-3 292

Status: ☒ Y ☐ N ☐ U

Seismic Walkdown Checklist (SWC)

Equipment ID No.: D03-1541-----A-FE

Equipment Class: (18) Instruments on Racks

Equipment Description: CCSW/ CCSW Pump "A" and "B" Discharge Flow Element

Project: Dresden 3 SWEL

Location (Bldg, Elev, Room/Area): Reactor, 476.50 ft, ALL

Manufacturer/Model: _____

Instructions for Completing Checklist

This checklist may be used to document the results of the Seismic Walkdown of an item of equipment on the SWEL. The space below each of the following questions may be used to record the results of judgments and findings. Additional space is provided at the end of this checklist for documenting other comments.

Anchorage

1. Is anchorage configuration verification required (i.e., is the item one of the 50% of SWEL items requiring such verification)? No

2. Is the anchorage free of bent, broken, missing or loose hardware? Not Applicable

3. Is the anchorage free of corrosion that is more than mild surface oxidation? Not Applicable

4. Is the anchorage free of visible cracks in the concrete near the anchors? Not Applicable

5. Is the anchorage configuration consistent with plant documentation? (Note: This question only applies if the item is one of the 50% for which an anchorage configuration verification is required.) Not Applicable

6. Based on the above anchorage evaluations, is the anchorage free of potentially adverse seismic conditions? Yes
Flow element is in pipeline (in-line component).

Status: ☒ Y ☐ N ☐ U

Seismic Walkdown Checklist (SWC)

Equipment ID No.: D03-1541-----A-FE

Equipment Class: (18) Instruments on Racks

Equipment Description: CCSW/ CCSW Pump "A" and "B" Discharge Flow Element

Interaction Effects

- | | |
|---|-----|
| 7. Are soft targets free from impact by nearby equipment or structures? | Yes |
| 8. Are overhead equipment, distribution systems, ceiling tiles and lighting, and masonry block walls not likely to collapse onto the equipment? | Yes |
| 9. Do attached lines have adequate flexibility to avoid damage? | Yes |
| 10. Based on the above seismic interaction evaluations, is equipment free of potentially adverse seismic interaction effects? | Yes |

Other Adverse Conditions

- | | |
|--|-----|
| 11. Have you looked for and found no adverse seismic conditions that could adversely affect the safety functions of the equipment? | Yes |
|--|-----|

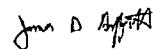
Comments

Seismic Walkdown Team: J. Griffith & M. Wodarczyk - 8/3/2012

Reference Drawing:

M-392, Rev. T.

Evaluated by:



James Griffith

Date: 10/24/2012



Michael Wodarczyk

10/24/2012

Status: ☒ Y ☐ N ☐ U

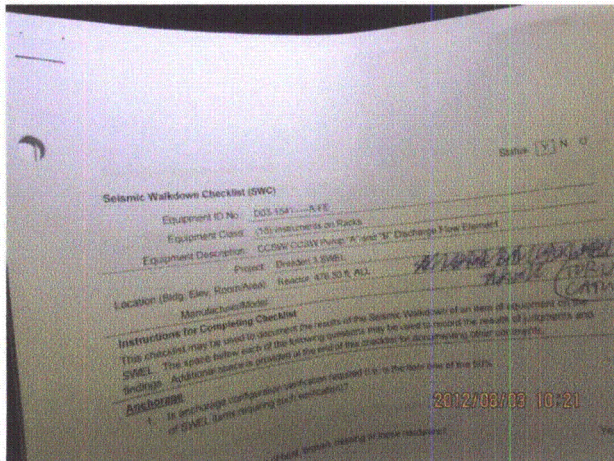
Seismic Walkdown Checklist (SWC)

Equipment ID No.: D03-1541-----A-FE

Equipment Class: (18) Instruments on Racks

Equipment Description: CCSW/ CCSW Pump "A" and "B" Discharge Flow Element

Photos



20120803-Dresden-3 080



20120803-Dresden-3 081



20120803-Dresden-3 082



20120803-Dresden-3 083

Status: ☒ Y ☐ N ☐ U

Seismic Walkdown Checklist (SWC)

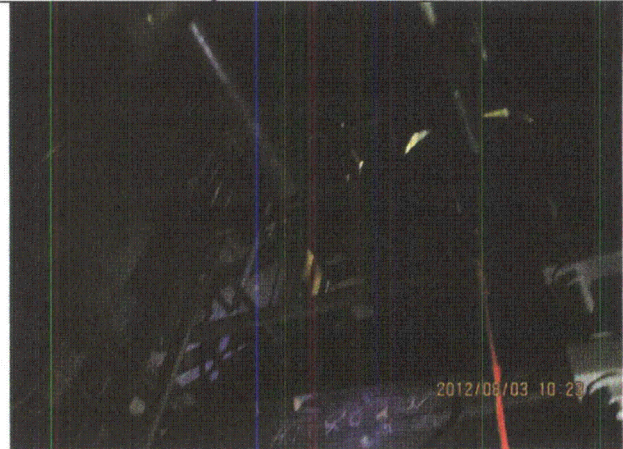
Equipment ID No.: D03-1541-----A-FE

Equipment Class: (18) Instruments on Racks

Equipment Description: CCSW/ CCSW Pump "A" and "B" Discharge Flow Element



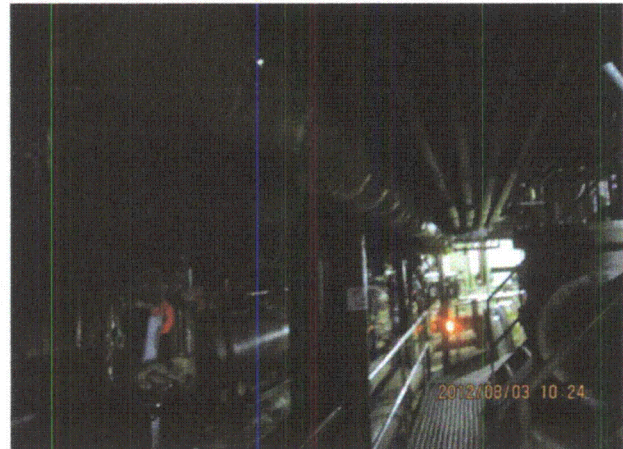
20120803-Dresden-3 086



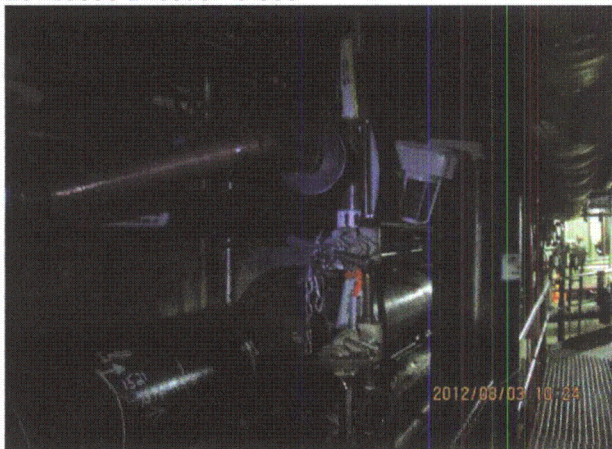
20120803-Dresden-3 087



20120803-Dresden-3 088



20120803-Dresden-3 090



20120803-Dresden-3 091



20120803-Dresden-3 093

Status: ☒ Y ☐ N ☐ U

Seismic Walkdown Checklist (SWC)

Equipment ID No.: D03-1541-----A-FE

Equipment Class: (18) Instruments on Racks

Equipment Description: CCSW/ CCSW Pump "A" and "B" Discharge Flow Element



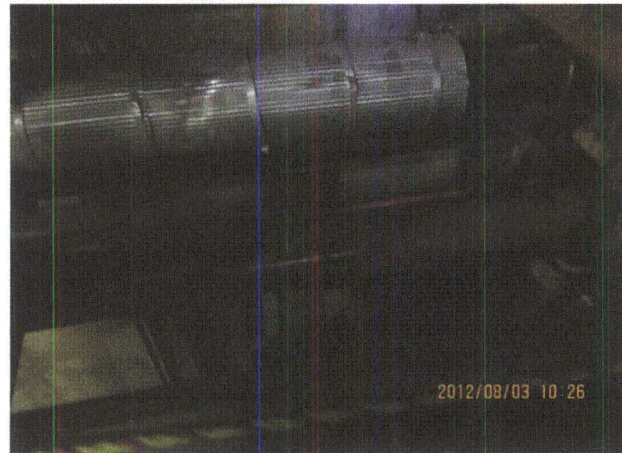
20120803-Dresden-3 094



20120803-Dresden-3 095



20120803-Dresden-3 096



20120803-Dresden-3 097



20120803-Dresden-3 098

Status: ☒ Y ☐ N ☐ U

Seismic Walkdown Checklist (SWC)

Equipment ID No.: D03-1599-0013AV26

Equipment Class: (7) Fluid-Operated Valves

Equipment Description: LPCI/ Suppression Pool Suction Line "A" Relief Valve

Project: Dresden 3 SWEL

Location (Bldg, Elev, Room/Area): Reactor, 476.50 ft, ALL

Manufacturer/Model: _____

Instructions for Completing Checklist

This checklist may be used to document the results of the Seismic Walkdown of an item of equipment on the SWEL. The space below each of the following questions may be used to record the results of judgments and findings. Additional space is provided at the end of this checklist for documenting other comments.

Anchorage

- | | | |
|----|---|----------------|
| 1. | Is anchorage configuration verification required (i.e., is the item one of the 50% of SWEL items requiring such verification)? | No |
| 2. | Is the anchorage free of bent, broken, missing or loose hardware? | Not Applicable |
| 3. | Is the anchorage free of corrosion that is more than mild surface oxidation? | Not Applicable |
| 4. | Is the anchorage free of visible cracks in the concrete near the anchors? | Not Applicable |
| 5. | Is the anchorage configuration consistent with plant documentation? (Note: This question only applies if the item is one of the 50% for which an anchorage configuration verification is required.) | Not Applicable |
| 6. | Based on the above anchorage evaluations, is the anchorage free of potentially adverse seismic conditions? | Yes |

Status: ☒ Y ☐ N ☐ U

Seismic Walkdown Checklist (SWC)

Equipment ID No.: D03-1599-0013AV26

Equipment Class: (7) Fluid-Operated Valves

Equipment Description: LPCI/ Suppression Pool Suction Line "A" Relief Valve

Interaction Effects

7. Are soft targets free from impact by nearby equipment or structures? Yes
8. Are overhead equipment, distribution systems, ceiling tiles and lighting, and masonry block walls not likely to collapse onto the equipment? Yes
9. Do attached lines have adequate flexibility to avoid damage? Yes
10. Based on the above seismic interaction evaluations, is equipment free of potentially adverse seismic interaction effects? Yes

Other Adverse Conditions

11. Have you looked for and found no adverse seismic conditions that could adversely affect the safety functions of the equipment? Yes

Comments

Seismic Walkdown Team: J. Griffith & M. Wodarczyk - 8/1/2012

Valve is tagged 3-1501-13A instead of 3-1599-3A. Operations confirmed that this is the proper item.

Evaluated by: James D. Griffith James Griffith Date: 10/24/2012

Michael J. Wodarczyk Michael Wodarczyk 10/24/2012

Status: ☒ Y ☐ N ☐ U

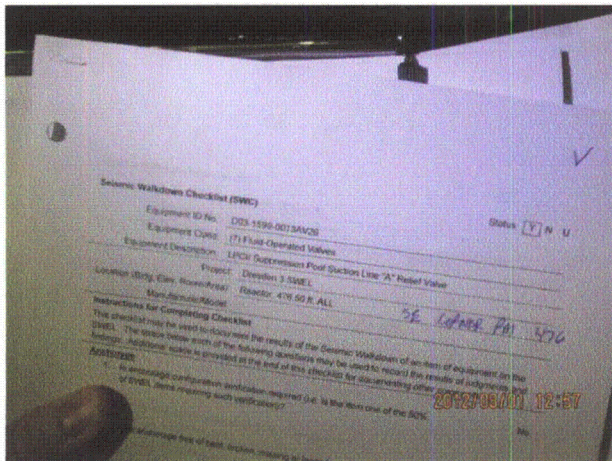
Seismic Walkdown Checklist (SWC)

Equipment ID No.: D03-1599-0013AV26

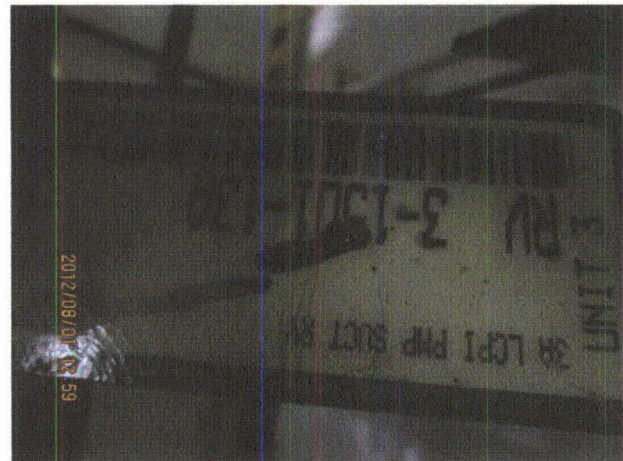
Equipment Class: (7) Fluid-Operated Valves

Equipment Description: LPCI/ Suppression Pool Suction Line "A" Relief Valve

Photos



20120801-Dresden-3 359



20120801-Dresden-3 361



20120801-Dresden-3 362



20120801-Dresden-3 363

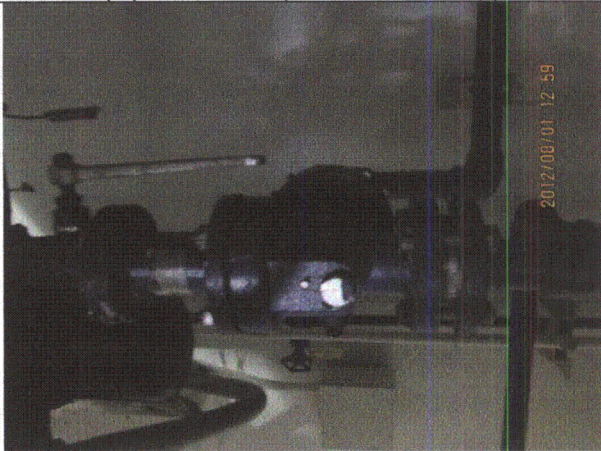
Status: ☒ Y ☐ N ☐ U

Seismic Walkdown Checklist (SWC)

Equipment ID No.: D03-1599-0013AV26

Equipment Class: (7) Fluid-Operated Valves

Equipment Description: LPCI/ Suppression Pool Suction Line "A" Relief Valve



20120801-Dresden-3 364



20120801-Dresden-3 365



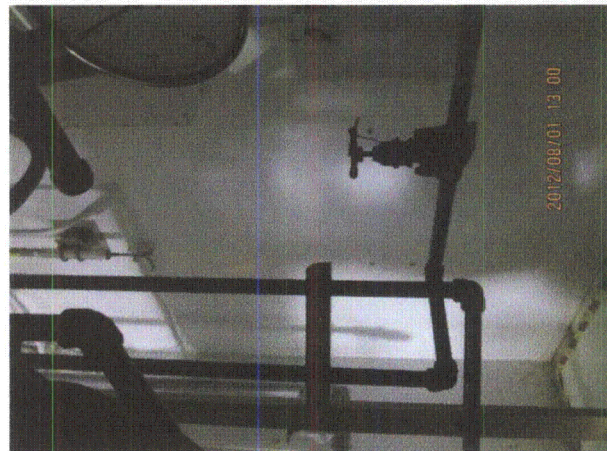
20120801-Dresden-3 366



20120801-Dresden-3 367



20120801-Dresden-3 368



20120801-Dresden-3 369

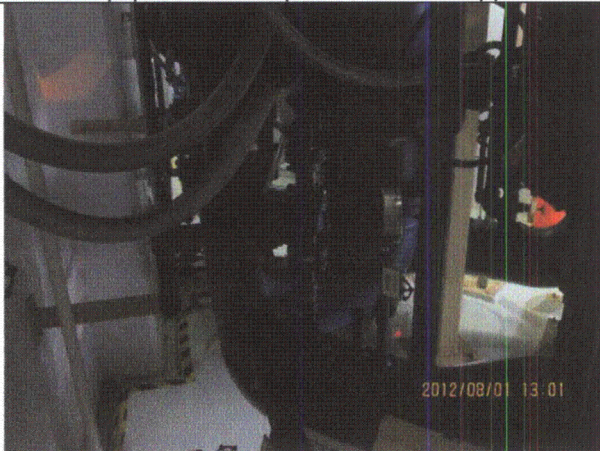
Status: ☒ Y ☐ N ☐ U

Seismic Walkdown Checklist (SWC)

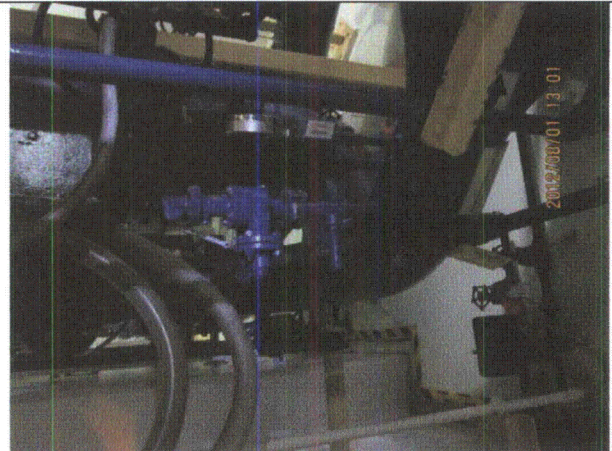
Equipment ID No.: D03-1599-0013AV26

Equipment Class: (7) Fluid-Operated Valves

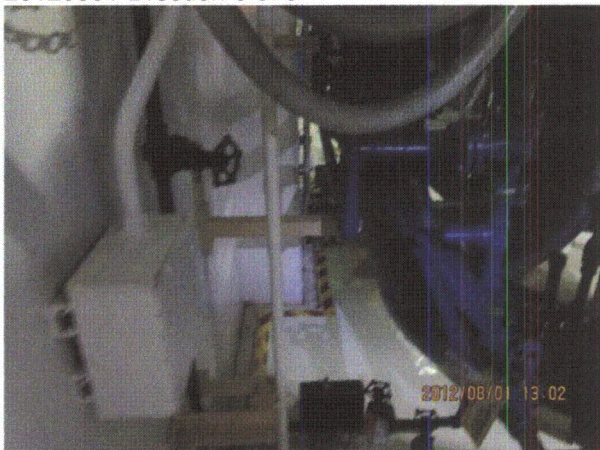
Equipment Description: LPCI/ Suppression Pool Suction Line "A" Relief Valve



20120801-Dresden-3 370



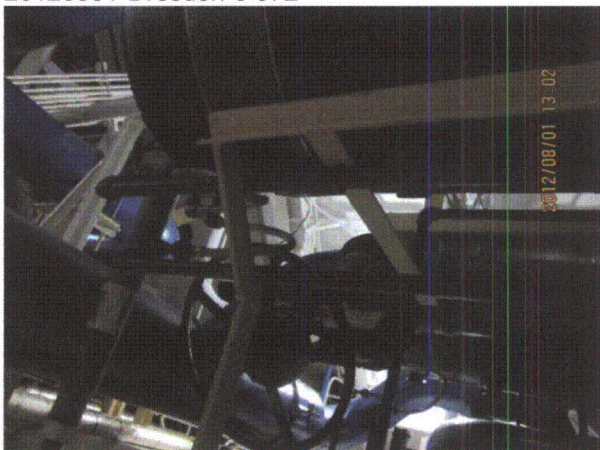
20120801-Dresden-3 371



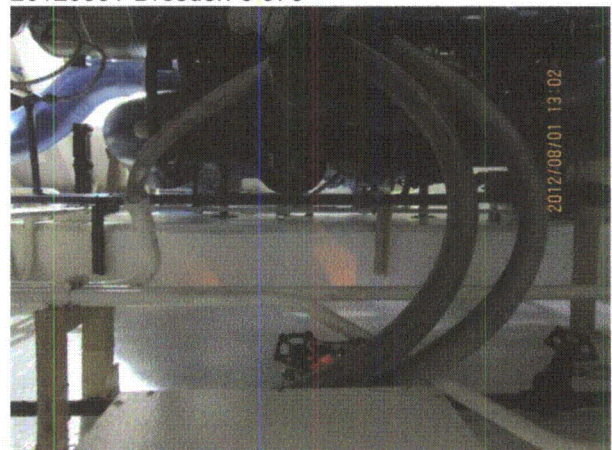
20120801-Dresden-3 372



20120801-Dresden-3 373



20120801-Dresden-3 374



20120801-Dresden-3 375

Status: ☒ Y ☐ N ☐ U

Seismic Walkdown Checklist (SWC)

Equipment ID No.: D03-1599-0013AV26

Equipment Class: (7) Fluid-Operated Valves

Equipment Description: LPCI/ Suppression Pool Suction Line "A" Relief Valve



20120801-Dresden-3 377

Status: ☒ Y ☐ N ☐ U

Seismic Walkdown Checklist (SWC)

Equipment ID No.: D03-1601-0023-V05

Equipment Class: (7) Fluid-Operated Valves

Equipment Description: PRESSURE SUPPRESSION/ Drywell Ventilation Line Valve

Project: Dresden 3 SWEL

Location (Bldg, Elev, Room/Area): Reactor, 570.00 ft, ALL

Manufacturer/Model:

Instructions for Completing Checklist

This checklist may be used to document the results of the Seismic Walkdown of an item of equipment on the SWEL. The space below each of the following questions may be used to record the results of judgments and findings. Additional space is provided at the end of this checklist for documenting other comments.

Anchorage

1. Is anchorage configuration verification required (i.e., is the item one of the 50% of SWEL items requiring such verification)? No
2. Is the anchorage free of bent, broken, missing or loose hardware? Not Applicable
3. Is the anchorage free of corrosion that is more than mild surface oxidation? Not Applicable
4. Is the anchorage free of visible cracks in the concrete near the anchors? Not Applicable
5. Is the anchorage configuration consistent with plant documentation? (Note: This question only applies if the item is one of the 50% for which an anchorage configuration verification is required.) Not Applicable
6. Based on the above anchorage evaluations, is the anchorage free of potentially adverse seismic conditions? Yes

Status: ☒ Y ☐ N ☐ U

Seismic Walkdown Checklist (SWC)

Equipment ID No.: D03-1601-0023-V05

Equipment Class: (7) Fluid-Operated Valves

Equipment Description: PRESSURE SUPPRESSION/ Drywell Ventilation Line Valve

Interaction Effects

- | | |
|---|-----|
| 7. Are soft targets free from impact by nearby equipment or structures? | Yes |
| 8. Are overhead equipment, distribution systems, ceiling tiles and lighting, and masonry block walls not likely to collapse onto the equipment? | Yes |
| 9. Do attached lines have adequate flexibility to avoid damage? | Yes |
| 10. Based on the above seismic interaction evaluations, is equipment free of potentially adverse seismic interaction effects? | Yes |

Other Adverse Conditions

- | | |
|--|-----|
| 11. Have you looked for and found no adverse seismic conditions that could adversely affect the safety functions of the equipment? | Yes |
|--|-----|

Comments

Seismic Walkdown Team: J. Griffith & M. Wodarczyk - 8/2/2012

Evaluated by:  James Griffith

Date: 9/30/2012



Michael Wodarczyk

9/30/2012

Status: ☒ Y ☐ N ☐ U

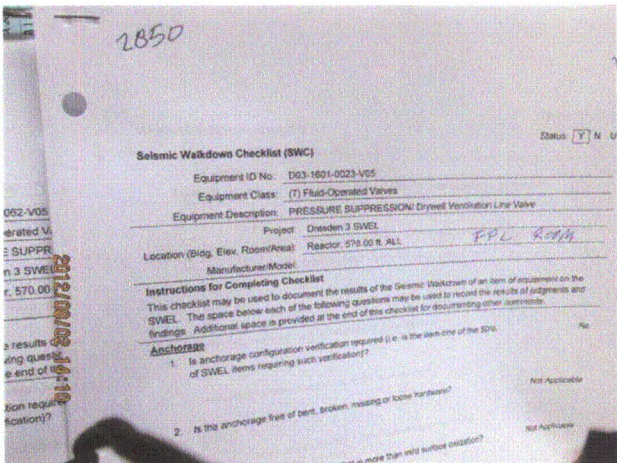
Seismic Walkdown Checklist (SWC)

Equipment ID No.: D03-1601-0023-V05

Equipment Class: (7) Fluid-Operated Valves

Equipment Description: PRESSURE SUPPRESSION/ Drywell Ventilation Line Valve

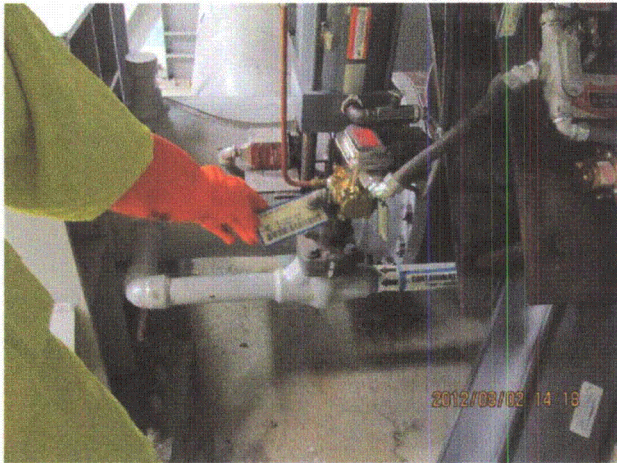
Photos



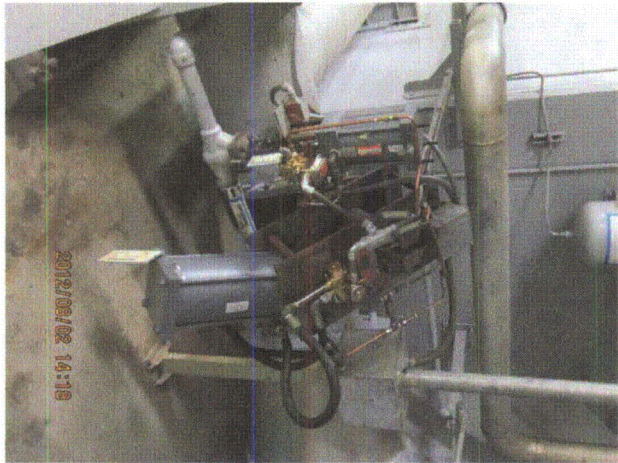
20120802-Dresden-3 241



20120802-Dresden-3 242



20120802-Dresden-3 243



20120802-Dresden-3 244

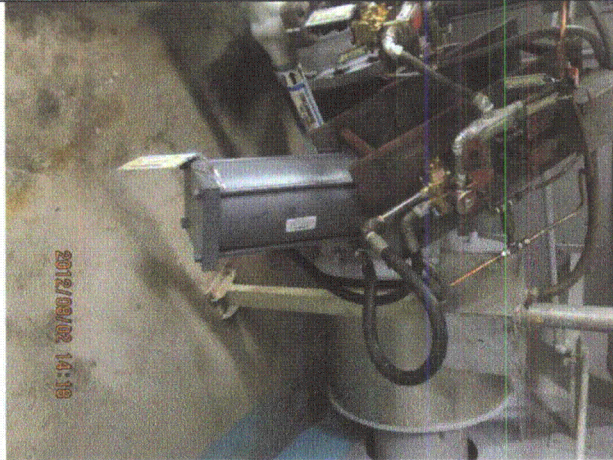
Status: ☒ Y ☐ N ☐ U

Seismic Walkdown Checklist (SWC)

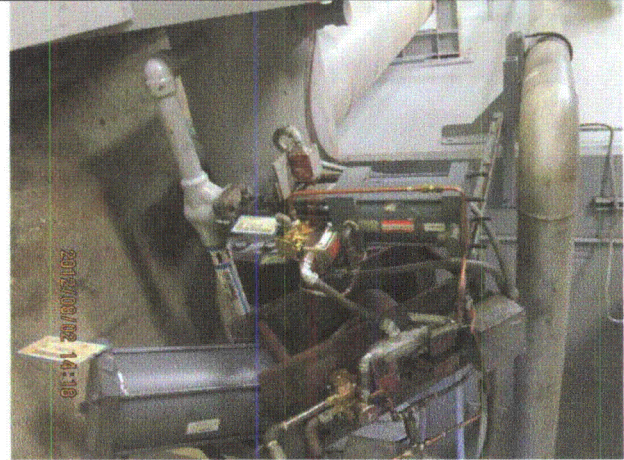
Equipment ID No.: D03-1601-0023-V05

Equipment Class: (7) Fluid-Operated Valves

Equipment Description: PRESSURE SUPPRESSION/ Drywell Ventilation Line Valve



20120802-Dresden-3 245



20120802-Dresden-3 246



20120802-Dresden-3 247



20120802-Dresden-3 248

Status: ☒ Y ☐ N ☐ U

Seismic Walkdown Checklist (SWC)

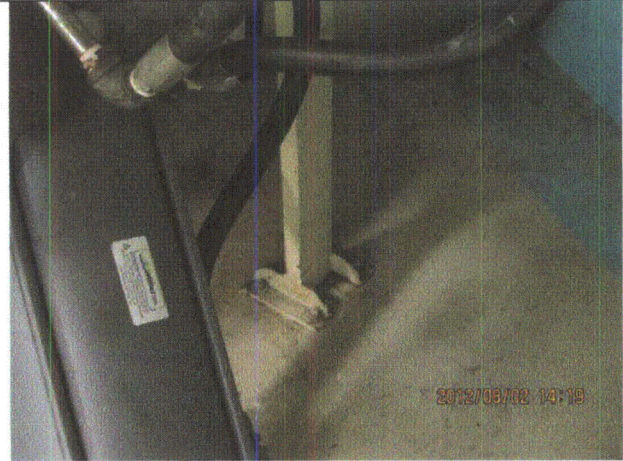
Equipment ID No.: D03-1601-0023-V05

Equipment Class: (7) Fluid-Operated Valves

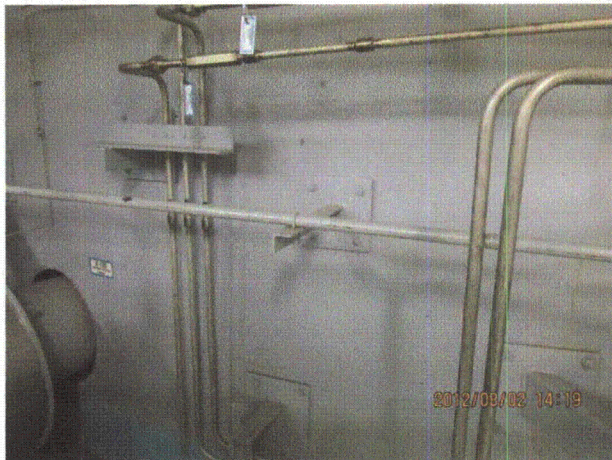
Equipment Description: PRESSURE SUPPRESSION/ Drywell Ventilation Line Valve



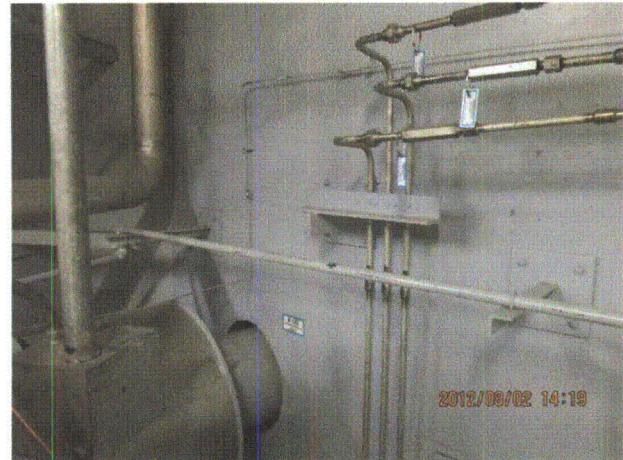
20120802-Dresden-3 249



20120802-Dresden-3 250



20120802-Dresden-3 251



20120802-Dresden-3 252

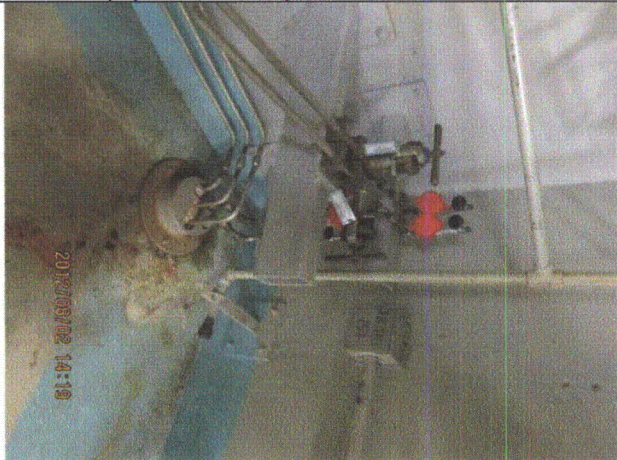
Status: ☒ Y ☐ N ☐ U

Seismic Walkdown Checklist (SWC)

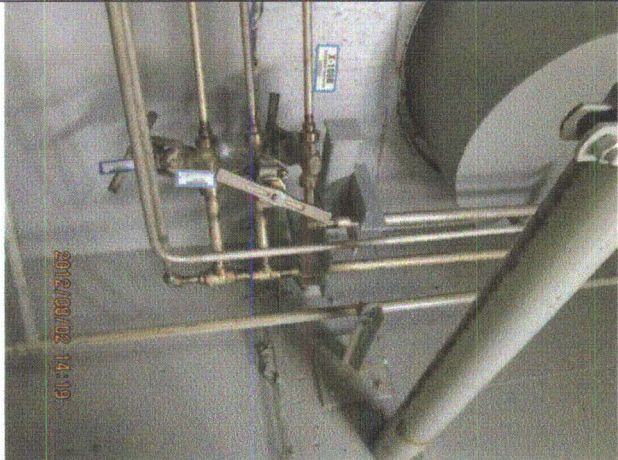
Equipment ID No.: D03-1601-0023-V05

Equipment Class: (7) Fluid-Operated Valves

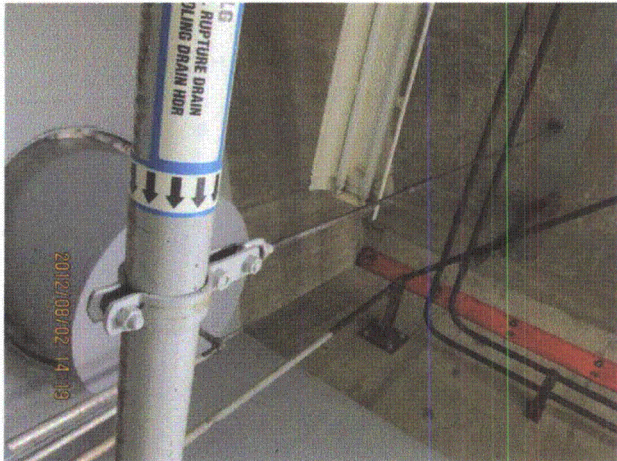
Equipment Description: PRESSURE SUPPRESSION/ Drywell Ventilation Line Valve



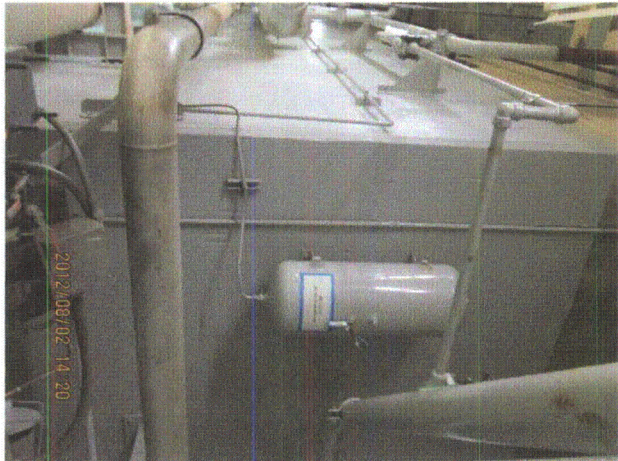
20120802-Dresden-3 253



20120802-Dresden-3 254



20120802-Dresden-3 255



20120802-Dresden-3 256

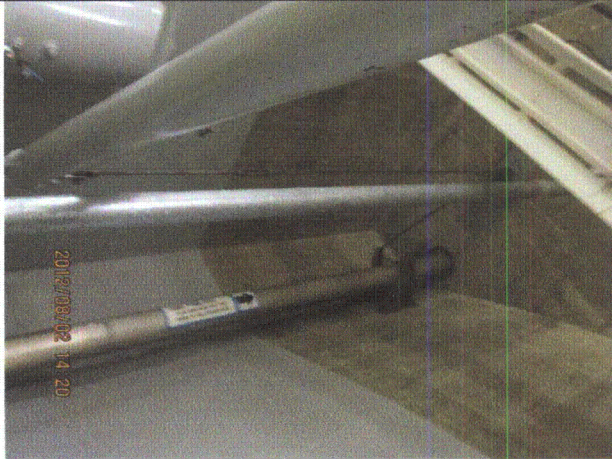
Status: ☒ Y ☐ N ☐ U

Seismic Walkdown Checklist (SWC)

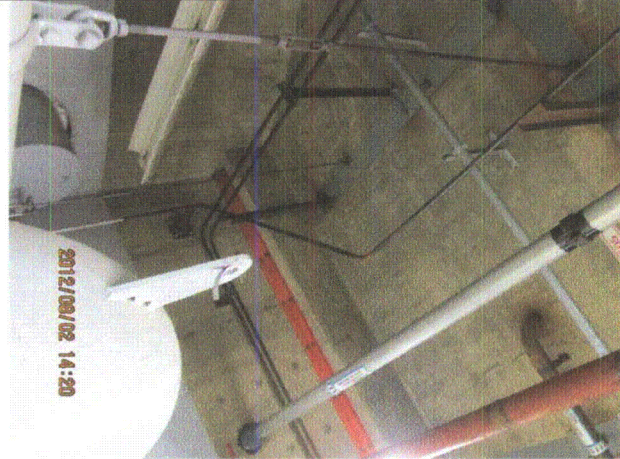
Equipment ID No.: D03-1601-0023-V05

Equipment Class: (7) Fluid-Operated Valves

Equipment Description: PRESSURE SUPPRESSION/ Drywell Ventilation Line Valve



20120802-Dresden-3 257



20120802-Dresden-3 258



20120802-Dresden-3 259



20120802-Dresden-3 260

Status: ☒ Y ☐ N ☐ U

Seismic Walkdown Checklist (SWC)

Equipment ID No.: D03-1601-0023-V05

Equipment Class: (7) Fluid-Operated Valves

Equipment Description: PRESSURE SUPPRESSION/ Drywell Ventilation Line Valve



20120802-Dresden-3 261



20120802-Dresden-3 262



20120802-Dresden-3 263



20120802-Dresden-3 264

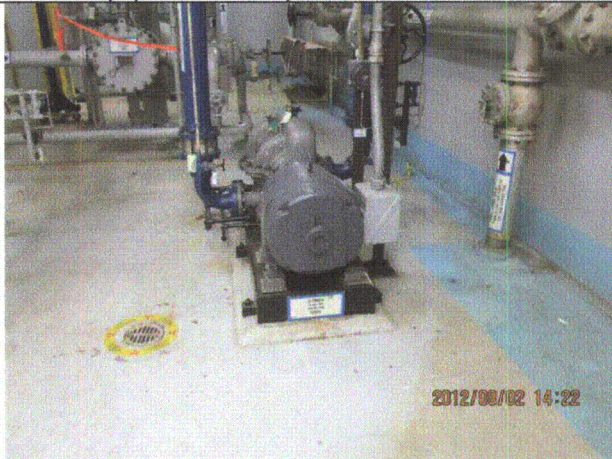
Status: ☒ Y ☐ N ☐ U

Seismic Walkdown Checklist (SWC)

Equipment ID No.: D03-1601-0023-V05

Equipment Class: (7) Fluid-Operated Valves

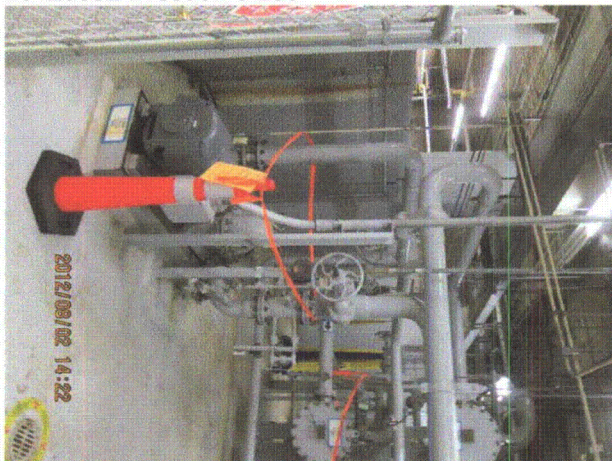
Equipment Description: PRESSURE SUPPRESSION/ Drywell Ventilation Line Valve



20120802-Dresden-3 265



20120802-Dresden-3 266



20120802-Dresden-3 267



20120802-Dresden-3 268

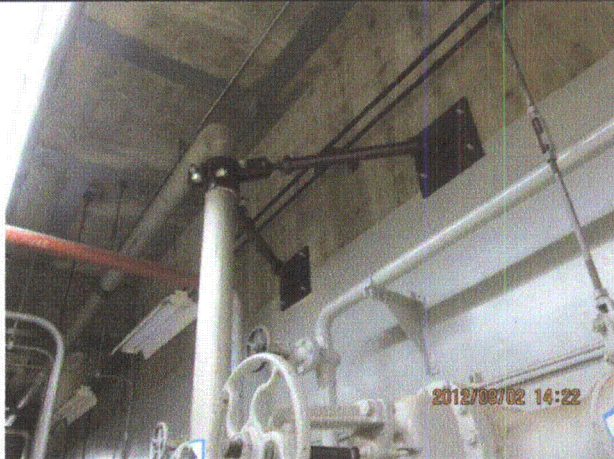
Status: ☒ Y ☐ N ☐ U

Seismic Walkdown Checklist (SWC)

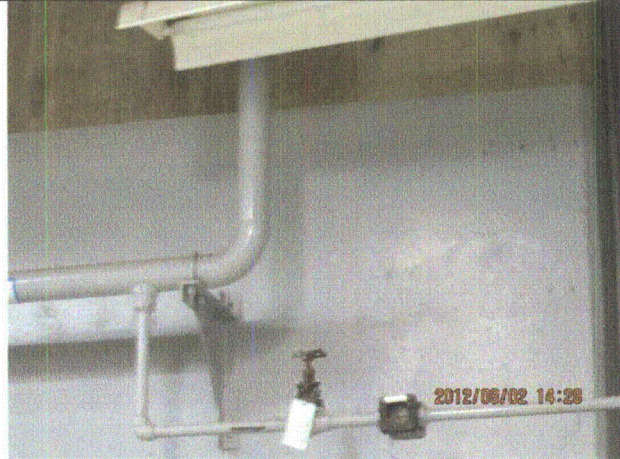
Equipment ID No.: D03-1601-0023-V05

Equipment Class: (7) Fluid-Operated Valves

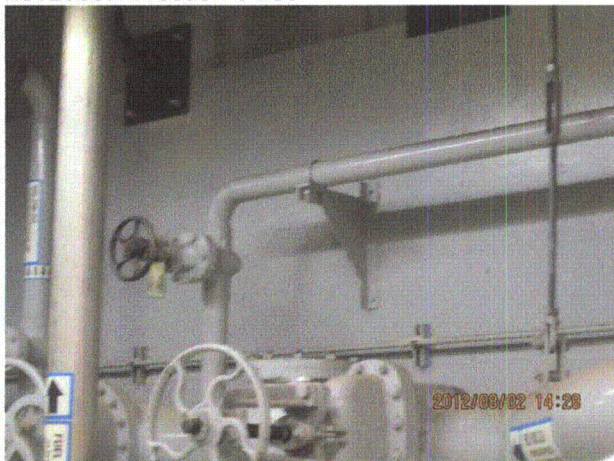
Equipment Description: PRESSURE SUPPRESSION/ Drywell Ventilation Line Valve



20120802-Dresden-3 269



20120802-Dresden-3 270



20120802-Dresden-3 271



20120802-Dresden-3 272

Status: ☒ Y ☐ N ☐ U

Seismic Walkdown Checklist (SWC)

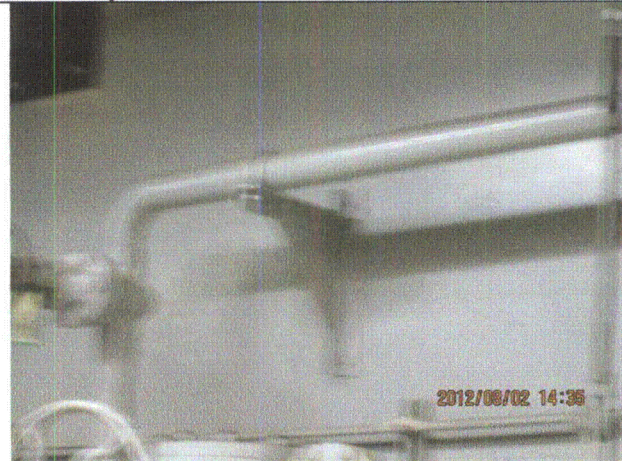
Equipment ID No.: D03-1601-0023-V05

Equipment Class: (7) Fluid-Operated Valves

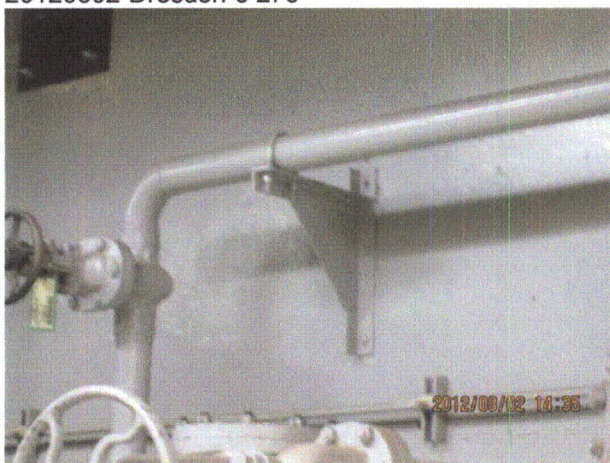
Equipment Description: PRESSURE SUPPRESSION/ Drywell Ventilation Line Valve



20120802-Dresden-3 273



20120802-Dresden-3 274



20120802-Dresden-3 275



20120802-Dresden-3 276

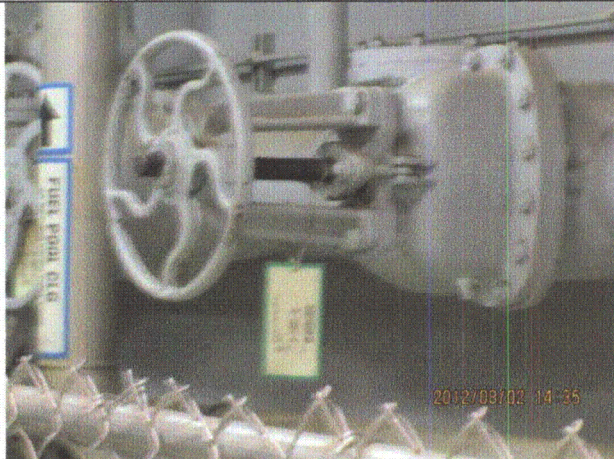
Status: ☒ Y ☐ N ☐ U

Seismic Walkdown Checklist (SWC)

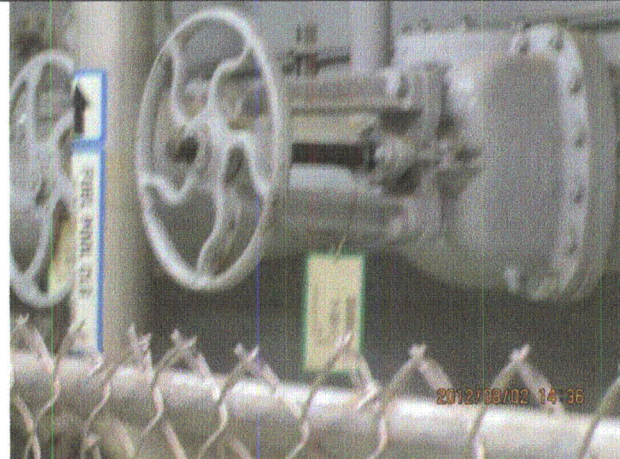
Equipment ID No.: D03-1601-0023-V05

Equipment Class: (7) Fluid-Operated Valves

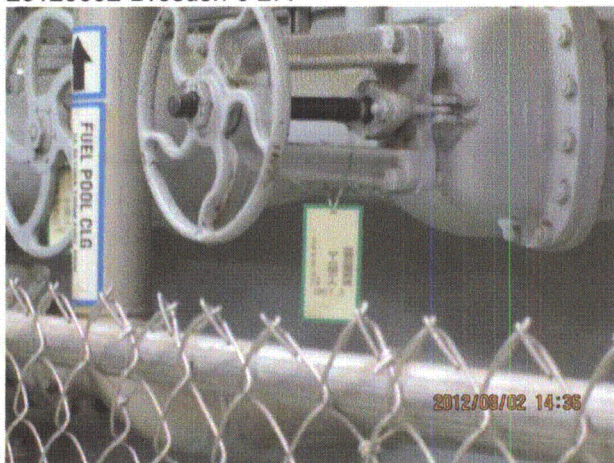
Equipment Description: PRESSURE SUPPRESSION/ Drywell Ventilation Line Valve



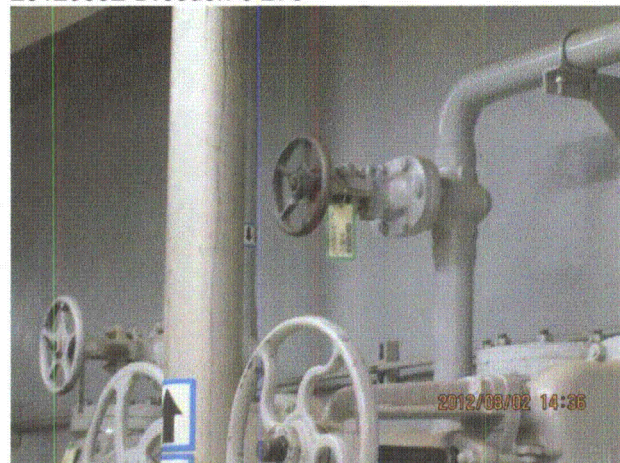
20120802-Dresden-3 277



20120802-Dresden-3 278



20120802-Dresden-3 279



20120802-Dresden-3 280

Status: ☒ Y ☐ N ☐ U

Seismic Walkdown Checklist (SWC)

Equipment ID No.: D03-1601-0024-V05

Equipment Class: (7) Fluid-Operated Valves

Equipment Description: PRESSURE SUPPRESSION/ Drywell and Torus Vent Valve

Project: Dresden 3 SWEL

Location (Bldg, Elev, Room/Area): Reactor, 570.00 ft, ALL

Manufacturer/Model:

Instructions for Completing Checklist

This checklist may be used to document the results of the Seismic Walkdown of an item of equipment on the SWEL. The space below each of the following questions may be used to record the results of judgments and findings. Additional space is provided at the end of this checklist for documenting other comments.

Anchorage

1. Is anchorage configuration verification required (i.e., is the item one of the 50% of SWEL items requiring such verification)? No
2. Is the anchorage free of bent, broken, missing or loose hardware? Not Applicable
3. Is the anchorage free of corrosion that is more than mild surface oxidation? Not Applicable
4. Is the anchorage free of visible cracks in the concrete near the anchors? Not Applicable
5. Is the anchorage configuration consistent with plant documentation? (Note: This question only applies if the item is one of the 50% for which an anchorage configuration verification is required.) Not Applicable
6. Based on the above anchorage evaluations, is the anchorage free of potentially adverse seismic conditions? Yes

Interaction Effects

7. Are soft targets free from impact by nearby equipment or structures? Yes