

Status: ☒ Y ☐ N ☐ U

Seismic Walkdown Checklist (SWC)

Equipment ID No.: D03-0305-0058-0023-0125-A10

Equipment Class: (21) Tanks and Heat Exchangers

Equipment Description: CRD/ Insertion Accumulator, East Bank, Row 1, Position 12 (R-6)

Project: Dresden 3 SWEL

Location (Bldg, Elev, Room/Area): Reactor, 517.50 ft, ALL

Manufacturer/Model: _____

Instructions for Completing Checklist

This checklist may be used to document the results of the Seismic Walkdown of an item of equipment on the SWEL. The space below each of the following questions may be used to record the results of judgments and findings. Additional space is provided at the end of this checklist for documenting other comments.

Anchorage

1. Is anchorage configuration verification required (i.e., is the item one of the 50% of SWEL items requiring such verification)? No
2. Is the anchorage free of bent, broken, missing or loose hardware? Not Applicable
3. Is the anchorage free of corrosion that is more than mild surface oxidation? Not Applicable
4. Is the anchorage free of visible cracks in the concrete near the anchors? Not Applicable
5. Is the anchorage configuration consistent with plant documentation? (Note: This question only applies if the item is one of the 50% for which an anchorage configuration verification is required.) Not Applicable
6. Based on the above anchorage evaluations, is the anchorage free of potentially adverse seismic conditions? Yes
The insertion accumulator is an in-line component that is adequately restrained to the CRD/HCU support frame.

Status: ☒ Y ☐ N ☐ U

Seismic Walkdown Checklist (SWC)

Equipment ID No.: D03-0305-0058-0023-0125-A10

Equipment Class: (21) Tanks and Heat Exchangers

Equipment Description: CRD/ Insertion Accumulator, East Bank, Row 1, Position 12 (R-6)

Interaction Effects

- | | |
|---|-----|
| 7. Are soft targets free from impact by nearby equipment or structures? | Yes |
| 8. Are overhead equipment, distribution systems, ceiling tiles and lighting, and masonry block walls not likely to collapse onto the equipment? | Yes |
| 9. Do attached lines have adequate flexibility to avoid damage? | Yes |
| 10. Based on the above seismic interaction evaluations, is equipment free of potentially adverse seismic interaction effects? | Yes |

Other Adverse Conditions

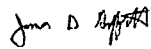
- | | |
|--|-----|
| 11. Have you looked for and found no adverse seismic conditions that could adversely affect the safety functions of the equipment? | Yes |
|--|-----|

Comments

Seismic Walkdown Team: J. Griffith & M. Wodarczyk - 7/31/2012


For photographs, see SWC for D03-0305-0058-0023-H20.

Evaluated by:



James Griffith

Date: 10/24/2012



Michael Wodarczyk

10/24/2012

Photos

Status: ☒ Y ☐ N ☐ U

Seismic Walkdown Checklist (SWC)

Equipment ID No.: D03-0305-0058-0023-0126-V05

Equipment Class: (7) Fluid-Operated Valves

Equipment Description: CRD/ Accumulator Insertion Scram Valve, East Bank, Row 1, Position 12 (R-6)

Project: Dresden 3 SWEL

Location (Bldg, Elev, Room/Area): Reactor, 517.50 ft, ALL

Manufacturer/Model:

Instructions for Completing Checklist

This checklist may be used to document the results of the Seismic Walkdown of an item of equipment on the SWEL. The space below each of the following questions may be used to record the results of judgments and findings. Additional space is provided at the end of this checklist for documenting other comments.

Anchorage

1. Is anchorage configuration verification required (i.e., is the item one of the 50% of SWEL items requiring such verification)? No
2. Is the anchorage free of bent, broken, missing or loose hardware? Not Applicable
3. Is the anchorage free of corrosion that is more than mild surface oxidation? Not Applicable
4. Is the anchorage free of visible cracks in the concrete near the anchors? Not Applicable
5. Is the anchorage configuration consistent with plant documentation? (Note: This question only applies if the item is one of the 50% for which an anchorage configuration verification is required.) Not Applicable
6. Based on the above anchorage evaluations, is the anchorage free of potentially adverse seismic conditions? Yes
The insertion scram valve is an in-line component with the operator adequately restrained to the CRD/HCU support frame.

Status: ☒ Y ☐ N ☐ U

Seismic Walkdown Checklist (SWC)

Equipment ID No.: D03-0305-0058-0023-0126-V05

Equipment Class: (7) Fluid-Operated Valves

Equipment Description: CRD/ Accumulator Insertion Scram Valve, East Bank, Row 1, Position 12 (R-6)

Interaction Effects

- | | |
|---|-----|
| 7. Are soft targets free from impact by nearby equipment or structures? | Yes |
| 8. Are overhead equipment, distribution systems, ceiling tiles and lighting, and masonry block walls not likely to collapse onto the equipment? | Yes |
| 9. Do attached lines have adequate flexibility to avoid damage? | Yes |
| 10. Based on the above seismic interaction evaluations, is equipment free of potentially adverse seismic interaction effects? | Yes |

Other Adverse Conditions

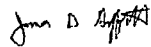
- | | |
|--|-----|
| 11. Have you looked for and found no adverse seismic conditions that could adversely affect the safety functions of the equipment? | Yes |
|--|-----|

Comments

Seismic Walkdown Team: J. Griffith & M. Wodarczyk - 7/31/2012

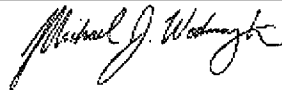
For photographs, see SWC for D03-0305-0058-0023-H20.

Evaluated by:



James Griffith

Date: 10/24/2012



Michael Wodarczyk

10/24/2012

Photos

Status: ☒ Y ☐ N ☐ U

Seismic Walkdown Checklist (SWC)

Equipment ID No.: D03-0305-0058-0023-0127-V05

Equipment Class: (7) Fluid-Operated Valves

Equipment Description: CRD/ Withdraw to Scram Discharge Volume Scram Valve, East Bank, Row 1,
Position 12 (R-6)

Project: Dresden 3 SWEL

Location (Bldg, Elev, Room/Area): Reactor, 517.50 ft, ALL

Manufacturer/Model:

Instructions for Completing Checklist

This checklist may be used to document the results of the Seismic Walkdown of an item of equipment on the SWEL. The space below each of the following questions may be used to record the results of judgments and findings. Additional space is provided at the end of this checklist for documenting other comments.

Anchorage

1. Is anchorage configuration verification required (i.e., is the item one of the 50% of SWEL items requiring such verification)? No
2. Is the anchorage free of bent, broken, missing or loose hardware? Not Applicable
3. Is the anchorage free of corrosion that is more than mild surface oxidation? Not Applicable
4. Is the anchorage free of visible cracks in the concrete near the anchors? Not Applicable
5. Is the anchorage configuration consistent with plant documentation? (Note: This question only applies if the item is one of the 50% for which an anchorage configuration verification is required.) Not Applicable
6. Based on the above anchorage evaluations, is the anchorage free of potentially adverse seismic conditions? Yes
The discharge volume scram valve is an in-line component with the operator adequately restrained to the CRD/HCU support frame.

Status: ☒ Y ☐ N ☐ U

Seismic Walkdown Checklist (SWC)

Equipment ID No.: D03-0305-0058-0023-0127-V05

Equipment Class: (7) Fluid-Operated Valves

CRD/ Withdraw to Scram Discharge Volume Scram Valve, East Bank, Row 1,
Equipment Description: Position 12 (R-6)

Interaction Effects

- | | |
|---|-----|
| 7. Are soft targets free from impact by nearby equipment or structures? | Yes |
| 8. Are overhead equipment, distribution systems, ceiling tiles and lighting, and masonry block walls not likely to collapse onto the equipment? | Yes |
| 9. Do attached lines have adequate flexibility to avoid damage? | Yes |
| 10. Based on the above seismic interaction evaluations, is equipment free of potentially adverse seismic interaction effects? | Yes |

Other Adverse Conditions

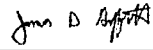
- | | |
|--|-----|
| 11. Have you looked for and found no adverse seismic conditions that could adversely affect the safety functions of the equipment? | Yes |
|--|-----|

Comments

Seismic Walkdown Team: J. Griffith & M. Wodarczyk - 7/31/2012

For photographs, see SWC for D03-0305-0058-0023-H20.

Evaluated by:



James Griffith

Date: 10/24/2012



Michael Wodarczyk

10/24/2012

Photos

Status: ☒ Y ☐ N ☐ U

Seismic Walkdown Checklist (SWC)

Equipment ID No.: D03-0305-0058-0023-H20

Equipment Class: (0) Other

Equipment Description: CRD/ Hydraulic Control Unit, East Bank, Row 1, Position 12 (R-6)

Project: Dresden 3 SWEL

Location (Bldg, Elev, Room/Area): Reactor, 517.50 ft, ALL

Manufacturer/Model: _____

Instructions for Completing Checklist

This checklist may be used to document the results of the Seismic Walkdown of an item of equipment on the SWEL. The space below each of the following questions may be used to record the results of judgments and findings. Additional space is provided at the end of this checklist for documenting other comments.

Anchorage

- | | |
|---|-----|
| 1. Is anchorage configuration verification required (i.e., is the item one of the 50% of SWEL items requiring such verification)? | Yes |
| 2. Is the anchorage free of bent, broken, missing or loose hardware? | Yes |
| 3. Is the anchorage free of corrosion that is more than mild surface oxidation? | Yes |
| 4. Is the anchorage free of visible cracks in the concrete near the anchors? | Yes |
| 5. Is the anchorage configuration consistent with plant documentation? (Note: This question only applies if the item is one of the 50% for which an anchorage configuration verification is required.) <i>Anchorage is shown on Drawings M-251, Rev. R, and M-258, Rev. J.</i> | Yes |
| 6. Based on the above anchorage evaluations, is the anchorage free of potentially adverse seismic conditions? | Yes |

Status: ☒ Y ☐ N ☐ U

Seismic Walkdown Checklist (SWC)

Equipment ID No.: D03-0305-0058-0023-H20

Equipment Class: (0) Other

Equipment Description: CRD/ Hydraulic Control Unit, East Bank, Row 1, Position 12 (R-6)

Interaction Effects

- | | |
|---|-----|
| 7. Are soft targets free from impact by nearby equipment or structures? | Yes |
| 8. Are overhead equipment, distribution systems, ceiling tiles and lighting, and masonry block walls not likely to collapse onto the equipment? | Yes |
| 9. Do attached lines have adequate flexibility to avoid damage? | Yes |
| 10. Based on the above seismic interaction evaluations, is equipment free of potentially adverse seismic interaction effects? | Yes |

Other Adverse Conditions

- | | |
|--|-----|
| 11. Have you looked for and found no adverse seismic conditions that could adversely affect the safety functions of the equipment? | Yes |
|--|-----|

Comments

Seismic Walkdown Team: J. Griffith & M. Wodarczyk - 7/31/2012

| | | | |
|---------------|---|-------|------------------|
| Evaluated by: | <u>James D. Griffith</u> James Griffith | Date: | <u>9/30/2012</u> |
| | <u>Michael J. Wodarczyk</u> Michael Wodarczyk | | <u>9/30/2012</u> |

Status: ☒ Y ☐ N ☐ U

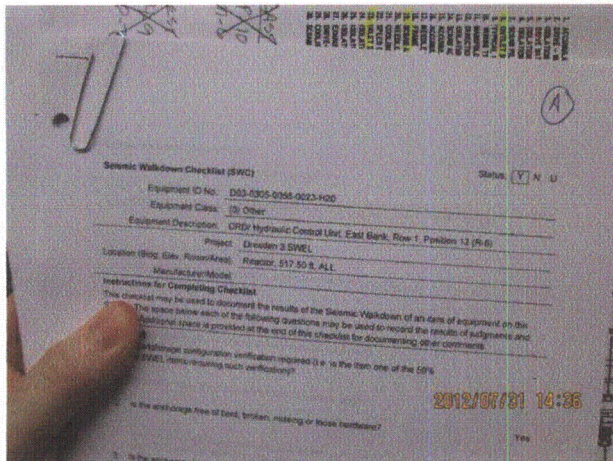
Seismic Walkdown Checklist (SWC)

Equipment ID No.: D03-0305-0058-0023-H20

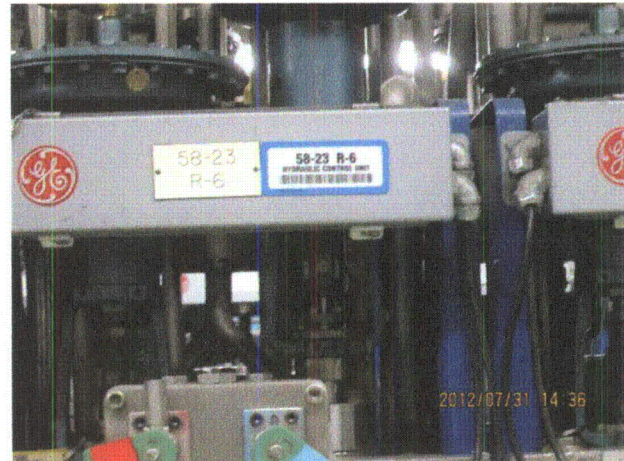
Equipment Class: (0) Other

Equipment Description: CRD/ Hydraulic Control Unit, East Bank, Row 1, Position 12 (R-6)

Photos



20120731-Dresden-3 406



20120731-Dresden-3 407



20120731-Dresden-3 408



20120731-Dresden-3 409

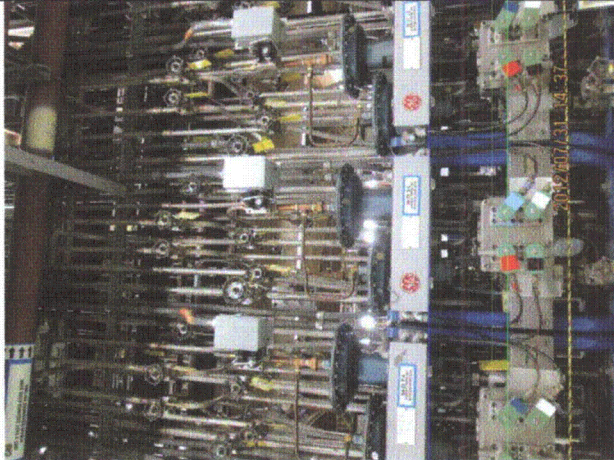
Status: ☒ Y ☐ N ☐ U

Seismic Walkdown Checklist (SWC)

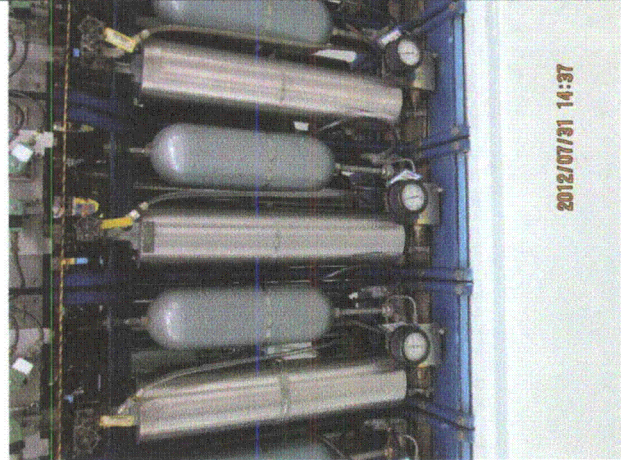
Equipment ID No.: D03-0305-0058-0023-H20

Equipment Class: (0) Other

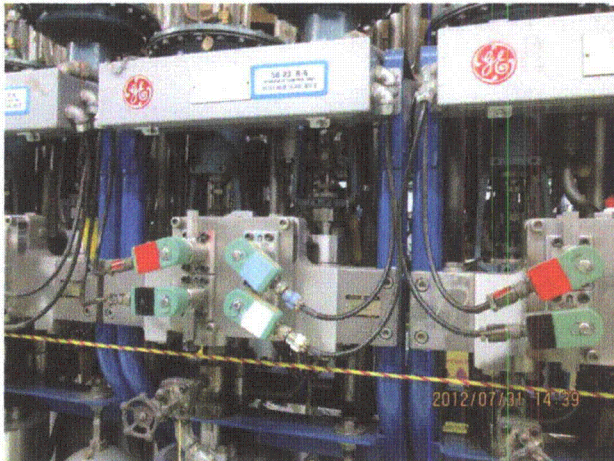
Equipment Description: CRD/ Hydraulic Control Unit, East Bank, Row 1, Position 12 (R-6)



20120731-Dresden-3 410



20120731-Dresden-3 411



20120731-Dresden-3 412



20120731-Dresden-3 413

Status: ☒ Y ☐ N ☐ U

Seismic Walkdown Checklist (SWC)

Equipment ID No.: D03-0409-A----T05

Equipment Class: (21) Tanks and Heat Exchangers

Equipment Description: CRD/ East Bank Scram Discharge Volume Tank

Project: Dresden 3 SWEL

Location (Bldg, Elev, Room/Area): Reactor, 517.50 ft, ALL

Manufacturer/Model: _____

Instructions for Completing Checklist

This checklist may be used to document the results of the Seismic Walkdown of an item of equipment on the SWEL. The space below each of the following questions may be used to record the results of judgments and findings. Additional space is provided at the end of this checklist for documenting other comments.

Anchorage

1. Is anchorage configuration verification required (i.e., is the item one of the 50% of SWEL items requiring such verification)? No
2. Is the anchorage free of bent, broken, missing or loose hardware? Yes
3. Is the anchorage free of corrosion that is more than mild surface oxidation? Yes
4. Is the anchorage free of visible cracks in the concrete near the anchors? Yes
Minor shrinkage cracks in wall judged to be acceptable.
5. Is the anchorage configuration consistent with plant documentation? (Note: This question only applies if the item is one of the 50% for which an anchorage configuration verification is required.) Not Applicable
6. Based on the above anchorage evaluations, is the anchorage free of potentially adverse seismic conditions? Yes

Status: ☒ Y ☐ N ☐ U

Seismic Walkdown Checklist (SWC)

Equipment ID No.: D03-0409-A----T05

Equipment Class: (21) Tanks and Heat Exchangers

Equipment Description: CRD/ East Bank Scram Discharge Volume Tank

Interaction Effects

7. Are soft targets free from impact by nearby equipment or structures? Yes
8. Are overhead equipment, distribution systems, ceiling tiles and lighting, and masonry block walls not likely to collapse onto the equipment? Yes
Adjacent masonry wall is safety-related.
9. Do attached lines have adequate flexibility to avoid damage? Yes
10. Based on the above seismic interaction evaluations, is equipment free of potentially adverse seismic interaction effects? Yes

Other Adverse Conditions

11. Have you looked for and found no adverse seismic conditions that could adversely affect the safety functions of the equipment? Yes

Comments

Seismic Walkdown Team: J. Griffith & M. Wodarczyk - 8/3/2012

Evaluated by:  James Griffith

Date: 9/30/2012



Michael Wodarczyk

9/30/2012

Status: ☒ Y ☐ N ☐ U

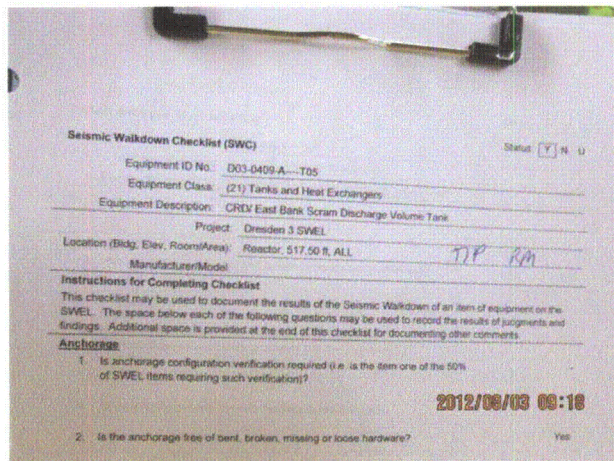
Seismic Walkdown Checklist (SWC)

Equipment ID No.: D03-0409-A----T05

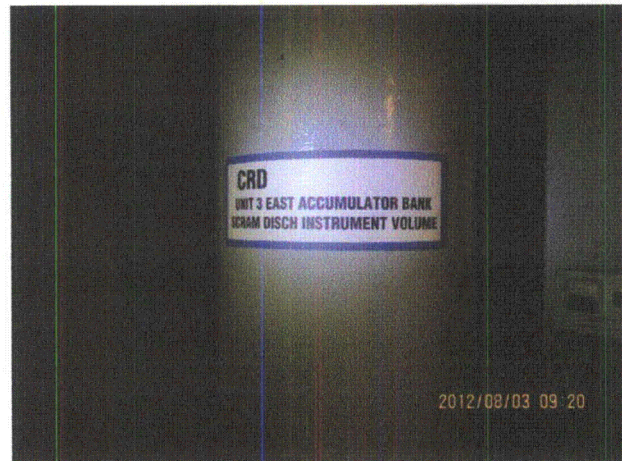
Equipment Class: (21) Tanks and Heat Exchangers

Equipment Description: CRD/ East Bank Scram Discharge Volume Tank

Photos



20120803-Dresden-3 038



20120803-Dresden-3 039



20120803-Dresden-3 040



20120803-Dresden-3 041

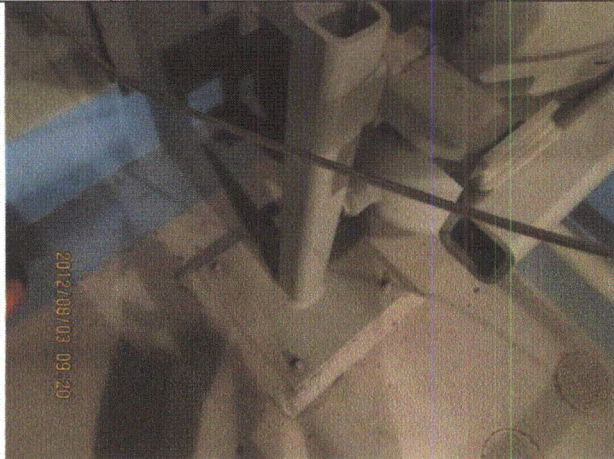
Status: ☒ Y ☐ N ☐ U

Seismic Walkdown Checklist (SWC)

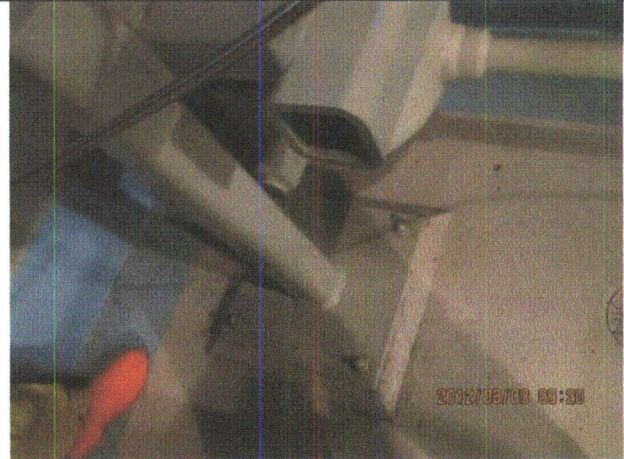
Equipment ID No.: D03-0409-A---T05

Equipment Class: (21) Tanks and Heat Exchangers

Equipment Description: CRD/ East Bank Scram Discharge Volume Tank



20120803-Dresden-3 042



20120803-Dresden-3 043



20120803-Dresden-3 044



20120803-Dresden-3 045

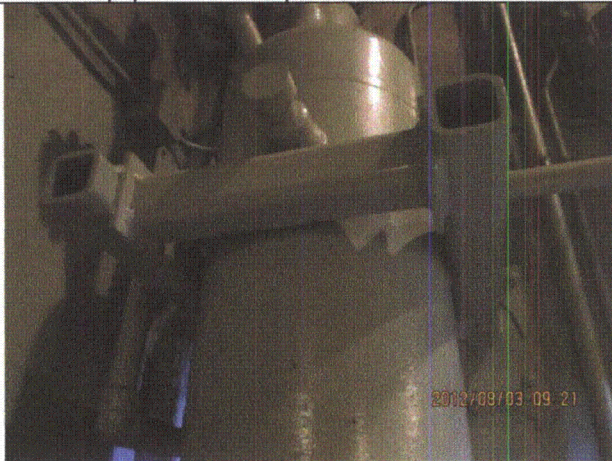
Status: ☒ Y ☐ N ☐ U

Seismic Walkdown Checklist (SWC)

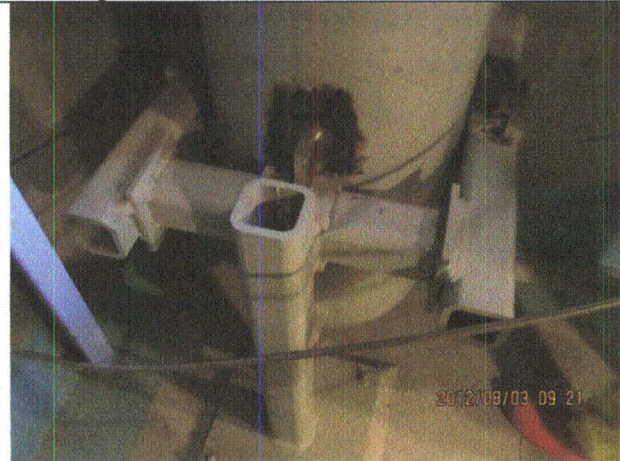
Equipment ID No.: D03-0409-A---T05

Equipment Class: (21) Tanks and Heat Exchangers

Equipment Description: CRD/ East Bank Scram Discharge Volume Tank



20120803-Dresden-3 046



20120803-Dresden-3 047



20120803-Dresden-3 048



20120803-Dresden-3 049

Status: ☒ Y ☐ N ☐ U

Seismic Walkdown Checklist (SWC)

Equipment ID No.: D03-0409-A---T05

Equipment Class: (21) Tanks and Heat Exchangers

Equipment Description: CRD/ East Bank Scram Discharge Volume Tank



20120803-Dresden-3 050



20120803-Dresden-3 051



20120803-Dresden-3 052



20120803-Dresden-3 053

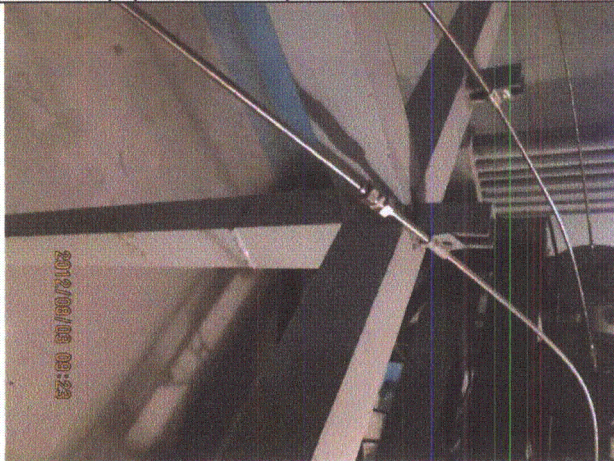
Status: ☒ Y ☐ N ☐ U

Seismic Walkdown Checklist (SWC)

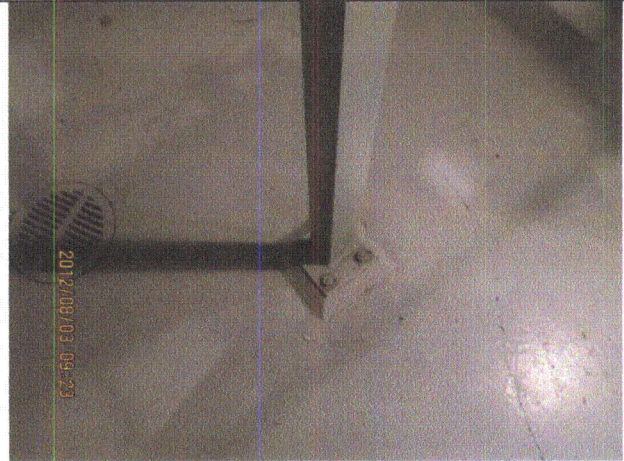
Equipment ID No.: D03-0409-A----T05

Equipment Class: (21) Tanks and Heat Exchangers

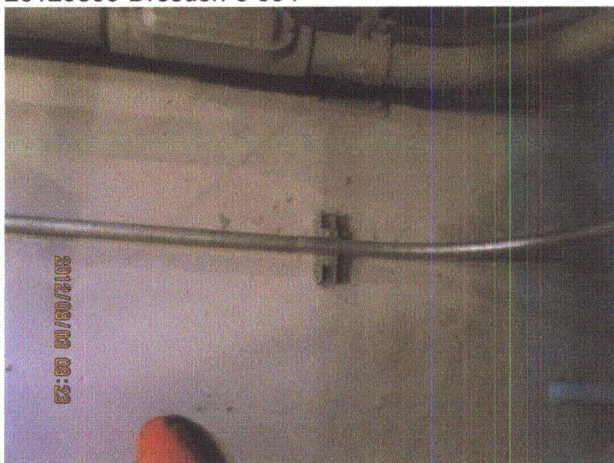
Equipment Description: CRD/ East Bank Scram Discharge Volume Tank



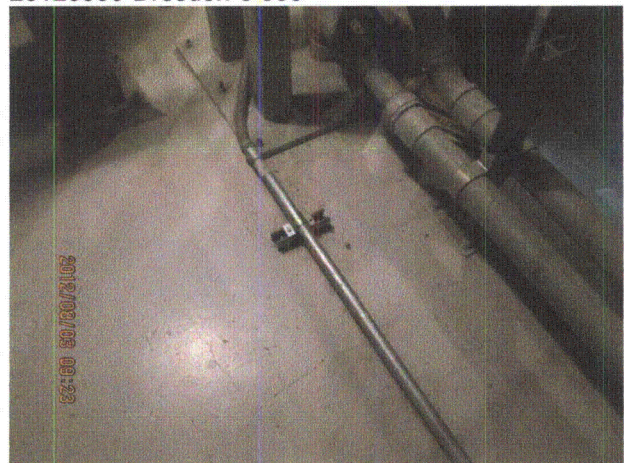
20120803-Dresden-3 054



20120803-Dresden-3 055



20120803-Dresden-3 056



20120803-Dresden-3 057

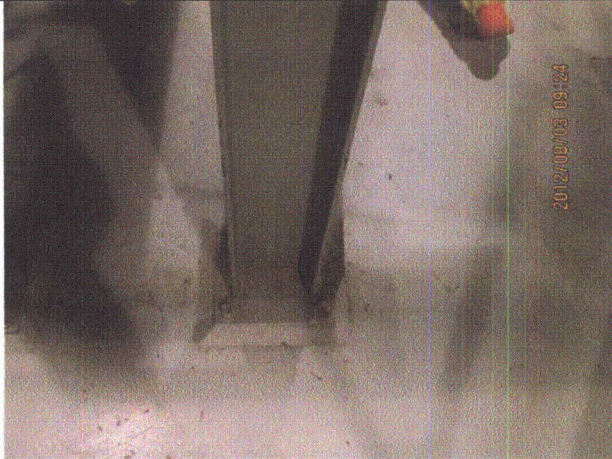
Status: ☒ Y ☐ N ☐ U

Seismic Walkdown Checklist (SWC)

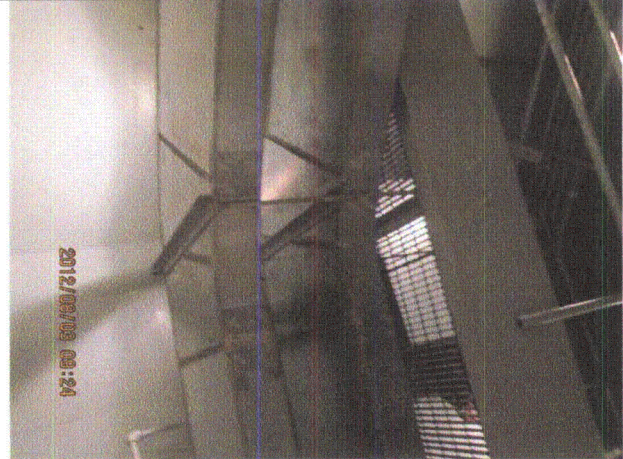
Equipment ID No.: D03-0409-A---T05

Equipment Class: (21) Tanks and Heat Exchangers

Equipment Description: CRD/ East Bank Scram Discharge Volume Tank



20120803-Dresden-3 058



20120803-Dresden-3 059



20120803-Dresden-3 060



20120803-Dresden-3 061

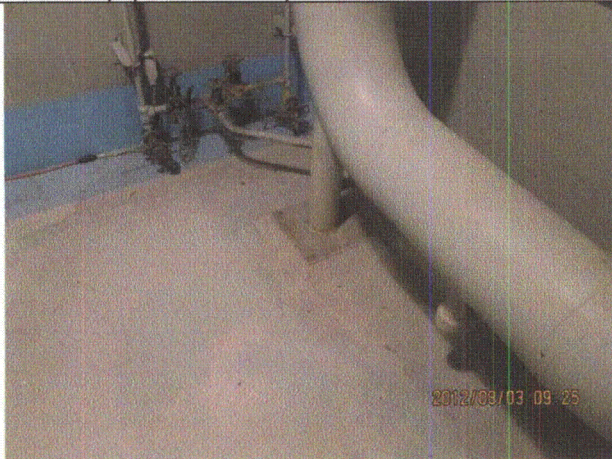
Status: ☒ Y ☐ N ☐ U

Seismic Walkdown Checklist (SWC)

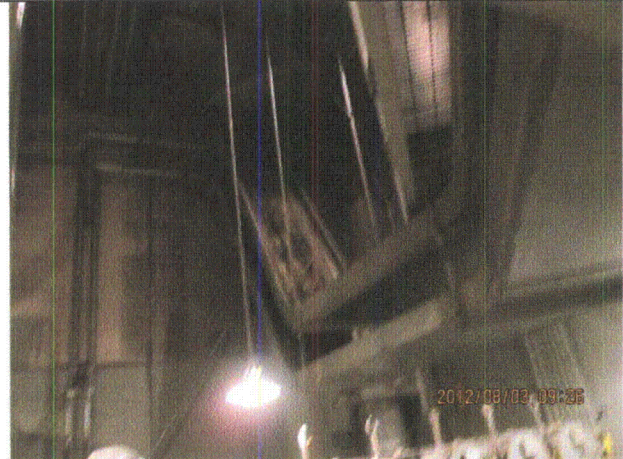
Equipment ID No.: D03-0409-A---T05

Equipment Class: (21) Tanks and Heat Exchangers

Equipment Description: CRD/ East Bank Scram Discharge Volume Tank



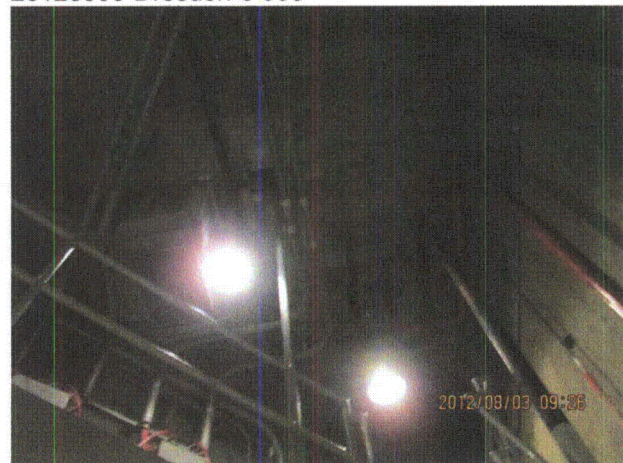
20120803-Dresden-3 062



20120803-Dresden-3 063



20120803-Dresden-3 064



20120803-Dresden-3 065

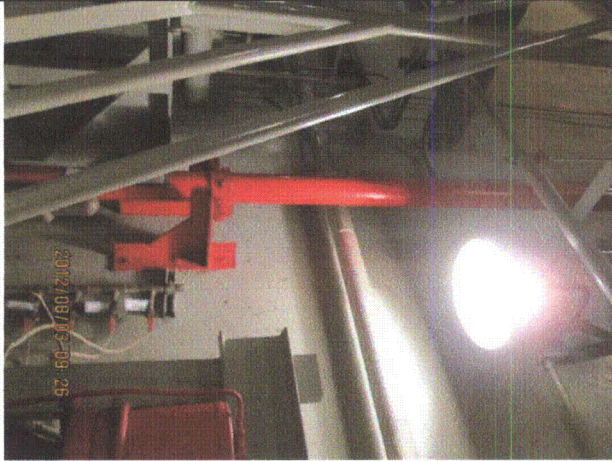
Status: ☒ Y ☐ N ☐ U

Seismic Walkdown Checklist (SWC)

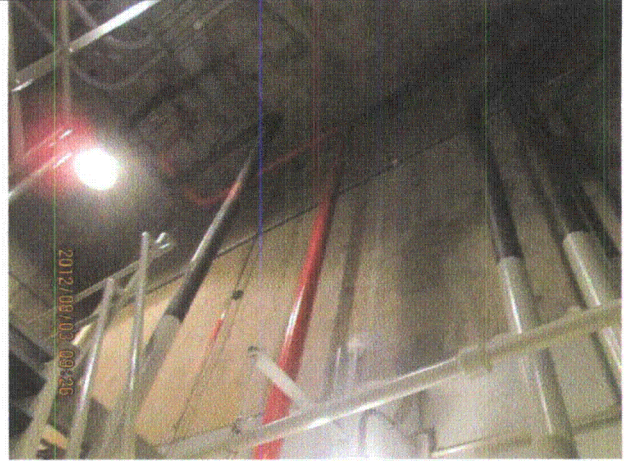
Equipment ID No.: D03-0409-A----T05

Equipment Class: (21) Tanks and Heat Exchangers

Equipment Description: CRD/ East Bank Scram Discharge Volume Tank



20120803-Dresden-3 066



20120803-Dresden-3 067



20120803-Dresden-3 068



20120803-Dresden-3 069

Status: ☒ Y ☐ N ☐ U

Seismic Walkdown Checklist (SWC)

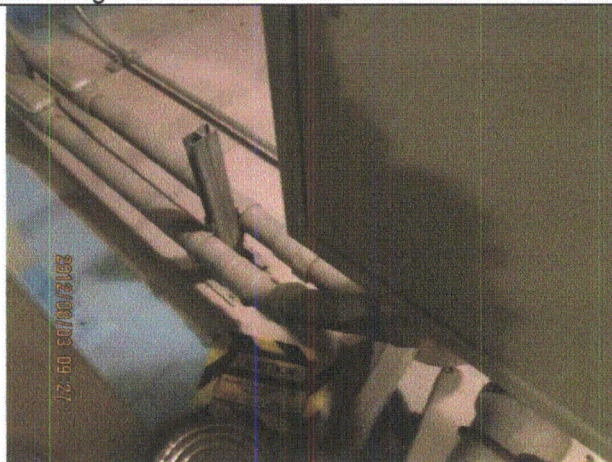
Equipment ID No.: D03-0409-A---T05

Equipment Class: (21) Tanks and Heat Exchangers

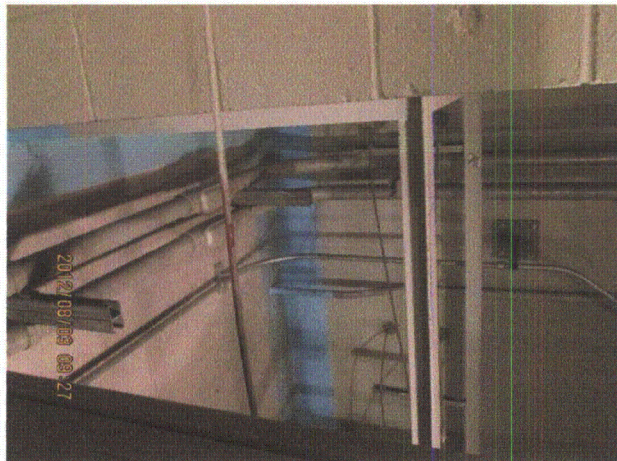
Equipment Description: CRD/ East Bank Scram Discharge Volume Tank



20120803-Dresden-3 070



20120803-Dresden-3 071



20120803-Dresden-3 072



20120803-Dresden-3 073

Status: ☒ Y ☐ N ☐ U

Seismic Walkdown Checklist (SWC)

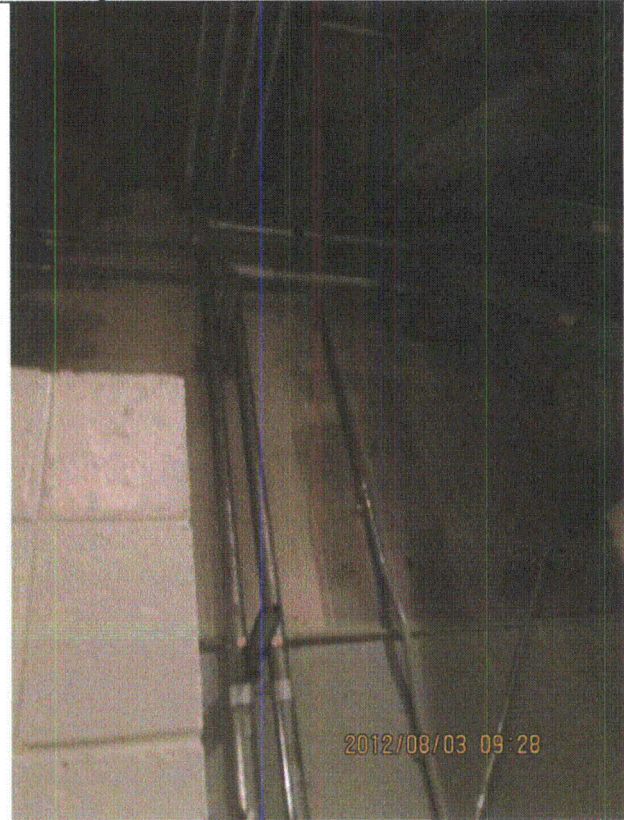
Equipment ID No.: D03-0409-A---T05

Equipment Class: (21) Tanks and Heat Exchangers

Equipment Description: CRD/ East Bank Scram Discharge Volume Tank



20120803-Dresden-3 074



20120803-Dresden-3 075



20120803-Dresden-3 076



20120803-Dresden-3 077

Status: ☒ Y ☐ N ☐ U

Seismic Walkdown Checklist (SWC)

Equipment ID No.: D03-0903-0003

Equipment Class: (20) Instrumentation and Control Panels and Cabinets

Equipment Description: CONTROL PANELS/ Control Panel 903-3

Project: Dresden 3 SWEL

Location (Bldg, Elev, Room/Area): Control Room, 534.00 ft, ALL

Manufacturer/Model:

Instructions for Completing Checklist

This checklist may be used to document the results of the Seismic Walkdown of an item of equipment on the SWEL. The space below each of the following questions may be used to record the results of judgments and findings. Additional space is provided at the end of this checklist for documenting other comments.

Anchorage

1. Is anchorage configuration verification required (i.e., is the item one of the 50% of SWEL items requiring such verification)? Yes
2. Is the anchorage free of bent, broken, missing or loose hardware? Yes
3. Is the anchorage free of corrosion that is more than mild surface oxidation? Yes
4. Is the anchorage free of visible cracks in the concrete near the anchors? Yes
5. Is the anchorage configuration consistent with plant documentation? (Note: This question only applies if the item is one of the 50% for which an anchorage configuration verification is required.) Yes
6. Based on the above anchorage evaluations, is the anchorage free of potentially adverse seismic conditions? Yes
Viewed 5 of 8 anchors. Remaining anchors could not be viewed due to cabling and limitations on access. Anchors viewed matched documentation, therefore it is reasonable to conclude that the anchors match plant documentation without further verification.

Status: ☒ Y ☐ N ☐ U

Seismic Walkdown Checklist (SWC)

Equipment ID No.: D03-0903-0003

Equipment Class: (20) Instrumentation and Control Panels and Cabinets

Equipment Description: CONTROL PANELS/ Control Panel 903-3

Interaction Effects

- | | |
|--|-----|
| 7. Are soft targets free from impact by nearby equipment or structures? | Yes |
| | |
| 8. Are overhead equipment, distribution systems, ceiling tiles and lighting, and masonry block walls not likely to collapse onto the equipment? <i>Lighting is judged to be acceptable. Raceway rod hangers are restrained to panels. Equipment judged to be free of adverse seismic interaction effects.</i> | Yes |
| | |
| 9. Do attached lines have adequate flexibility to avoid damage? | Yes |
| | |
| 10. Based on the above seismic interaction evaluations, is equipment free of potentially adverse seismic interaction effects? | Yes |

Other Adverse Conditions

- | | |
|--|-----|
| 11. Have you looked for and found no adverse seismic conditions that could adversely affect the safety functions of the equipment? <i>Back of panel open. No other adverse seismic conditions. No photos allowed by Operations.</i> | Yes |
|--|-----|

Comments

SEWS Anchorage Notes:

Anchored by 4 tabs in front and 4 on back. All anchored by welded friction clips (clips are welded to panel base channels). Clips are bolted by a 3/4" concrete expansion anchors. Clips are 3/8" thick, 2" wide and about 5" long.

Seismic Walkdown Team: J. Griffith & M. Wodarczyk - 7/30/2012

Per Operations, no photos were permitted inside control panels.

Status: ☒ Y ☐ N ☐ U

Seismic Walkdown Checklist (SWC)

Equipment ID No.: D03-0903-0003

Equipment Class: (20) Instrumentation and Control Panels and Cabinets

Equipment Description: CONTROL PANELS/ Control Panel 903-3

Evaluated by: James Griffith

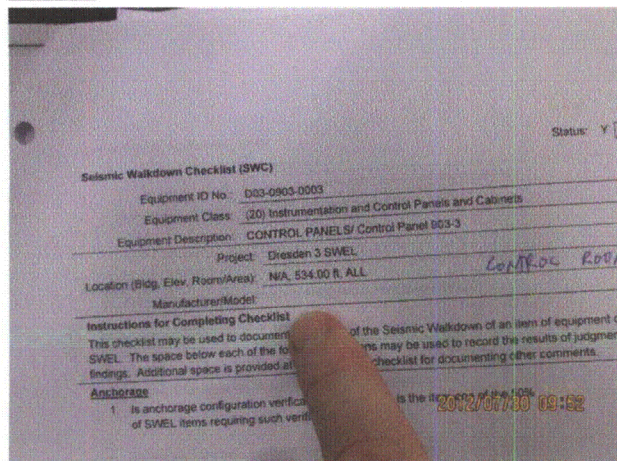
Date: 9/30/2012

Michael J. Wodarczyk

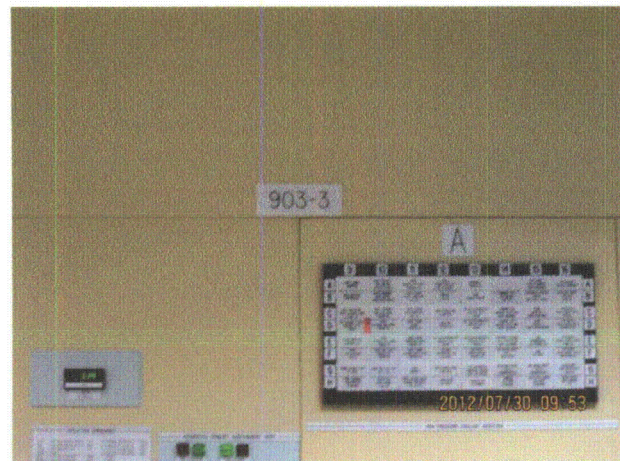
Michael Wodarczyk

9/30/2012

Photos



20120730-Dresden-3 002



20120730-Dresden-3 003

Status: ☒ Y ☐ N ☐ U

Seismic Walkdown Checklist (SWC)

Equipment ID No.: D03-0903-0015

Equipment Class: (20) Instrumentation and Control Panels and Cabinets

Equipment Description: CONTROL PANELS/ Control Panel 903-15

Project: Dresden 3 SWEL

Location (Bldg, Elev, Room/Area): Control Room, 534.00 ft, ALL

Manufacturer/Model: _____

Instructions for Completing Checklist

This checklist may be used to document the results of the Seismic Walkdown of an item of equipment on the SWEL. The space below each of the following questions may be used to record the results of judgments and findings. Additional space is provided at the end of this checklist for documenting other comments.

Anchorage

- | | | |
|----|---|-----|
| 1. | Is anchorage configuration verification required (i.e., is the item one of the 50% of SWEL items requiring such verification)? | Yes |
| 2. | Is the anchorage free of bent, broken, missing or loose hardware? | Yes |
| 3. | Is the anchorage free of corrosion that is more than mild surface oxidation? | Yes |
| 4. | Is the anchorage free of visible cracks in the concrete near the anchors? | Yes |
| 5. | Is the anchorage configuration consistent with plant documentation? (Note: This question only applies if the item is one of the 50% for which an anchorage configuration verification is required.) | Yes |
| 6. | Based on the above anchorage evaluations, is the anchorage free of potentially adverse seismic conditions? <i>Viewed 4 of 6 anchors discussed in SEWS anchorage notes. Remaining anchors could not be viewed due to cabling and limitations on access. Anchors viewed matched documentation, therefore it is reasonable to conclude that the anchors match plant documentation without further verification.</i> | Yes |

Status: ☒ Y ☐ N ☐ U

Seismic Walkdown Checklist (SWC)

Equipment ID No.: D03-0903-0015

Equipment Class: (20) Instrumentation and Control Panels and Cabinets

Equipment Description: CONTROL PANELS/ Control Panel 903-15

Interaction Effects

- | | |
|---|-----|
| 7. Are soft targets free from impact by nearby equipment or structures? | Yes |
| 8. Are overhead equipment, distribution systems, ceiling tiles and lighting, and masonry block walls not likely to collapse onto the equipment? <i>Light fixtures are judged to be acceptable. Adjacent masonry wall is safety-related (No. 21, B-1709, Rev. A). Raceway rod hangers are restrained to panels and judged to be acceptable.</i> | Yes |
| 9. Do attached lines have adequate flexibility to avoid damage? | Yes |
| 10. Based on the above seismic interaction evaluations, is equipment free of potentially adverse seismic interaction effects? | Yes |

Other Adverse Conditions

- | | |
|---|-----|
| 11. Have you looked for and found no adverse seismic conditions that could adversely affect the safety functions of the equipment? <i>Back of panel open. No other adverse seismic conditions.</i> | Yes |
|---|-----|

Comments

SEWS Anchorage Notes:

Anchored by at least 4 tabs in front and 2 tabs on back which were visible during the walkdown. Other tabs are covered by cables and not visible. All anchored by welded friction clips (clips are welded to panel base channels). On one side, clip is bolted by a 3/4" concrete expansion anchor. On the other side, clip is welded to embedded steel. Clips are 3/8" thick, 2" wide, about 5" long for the bolted clip and about 3" long for the welded clip.

Seismic Walkdown Team: J. Griffith & M. Wodarczyk - 7/30/2012

Status: ☒ Y ☐ N ☐ U

Seismic Walkdown Checklist (SWC)

Equipment ID No.: D03-0903-0015

Equipment Class: (20) Instrumentation and Control Panels and Cabinets

Equipment Description: CONTROL PANELS/ Control Panel 903-15

Evaluated by:

James D. Griffith

James Griffith

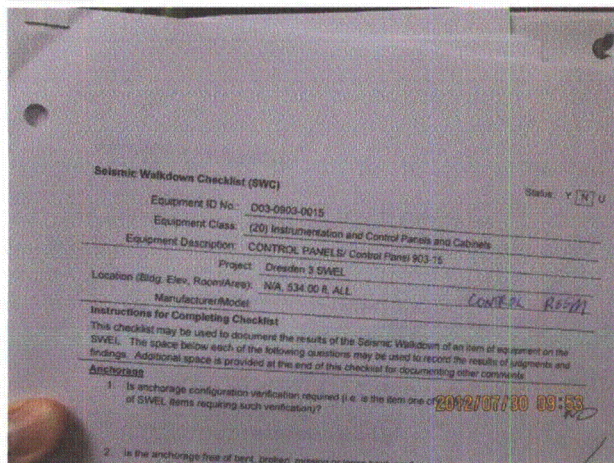
Date: 10/24/2012

Michael J. Wodarczyk

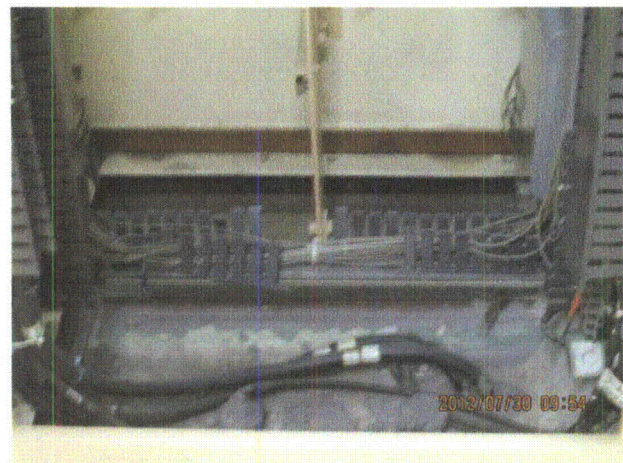
Michael Wodarczyk

10/24/2012

Photos



20120730-Dresden-3 004



20120730-Dresden-3 005



20120730-Dresden-3 007



20120730-Dresden-3 008

Status: ☒ Y ☐ N ☐ U

Seismic Walkdown Checklist (SWC)

Equipment ID No.: D03-0903-0028

Equipment Class: (20) Instrumentation and Control Panels and Cabinets

Equipment Description: CONTROL PANELS/ Control Panel 903-28

Project: Dresden 3 SWEL

Location (Bldg, Elev, Room/Area): Turbine, 517.50 ft, ALL

Manufacturer/Model:

Instructions for Completing Checklist

This checklist may be used to document the results of the Seismic Walkdown of an item of equipment on the SWEL. The space below each of the following questions may be used to record the results of judgments and findings. Additional space is provided at the end of this checklist for documenting other comments.

Anchorage

1. Is anchorage configuration verification required (i.e., is the item one of the 50% of SWEL items requiring such verification)? Yes
2. Is the anchorage free of bent, broken, missing or loose hardware? Yes
3. Is the anchorage free of corrosion that is more than mild surface oxidation? Yes
4. Is the anchorage free of visible cracks in the concrete near the anchors? Yes
Minor shrinkage cracks in floor are judged to be acceptable.
5. Is the anchorage configuration consistent with plant documentation? (Note: This question only applies if the item is one of the 50% for which an anchorage configuration verification is required.) Yes
6. Based on the above anchorage evaluations, is the anchorage free of potentially adverse seismic conditions? Yes

Status: ☒ Y ☐ N ☐ U

Seismic Walkdown Checklist (SWC)

Equipment ID No.: D03-0903-0028

Equipment Class: (20) Instrumentation and Control Panels and Cabinets

Equipment Description: CONTROL PANELS/ Control Panel 903-28

Interaction Effects

- | | |
|---|-----|
| 7. Are soft targets free from impact by nearby equipment or structures? | Yes |
| 8. Are overhead equipment, distribution systems, ceiling tiles and lighting, and masonry block walls not likely to collapse onto the equipment? <i>Lighting fixtures are judged to be acceptable. Adjacent masonry wall is safety-related.</i> | Yes |
| 9. Do attached lines have adequate flexibility to avoid damage? | Yes |
| 10. Based on the above seismic interaction evaluations, is equipment free of potentially adverse seismic interaction effects? | Yes |

Other Adverse Conditions

- | | |
|---|-----|
| 11. Have you looked for and found no adverse seismic conditions that could adversely affect the safety functions of the equipment? <i>All panel doors opened. No other adverse seismic conditions.</i> | Yes |
|---|-----|

IR 1394831:

Panel with doors that do not latch

While performing NRC-required NTTF seismic walkdowns, Panel 903-28 was found unlocked and unlatched. The opening device is a push button lock without a handle, which makes it impossible to engage the latches without a key. Upon discovery, Operations was dispatched to find a key, but they were unsuccessful in finding one.

As an interim measure, the doors have been secured (taped shut) to prevent movement during a seismic event. In addition, a satisfactory "tug test" on the secured doors was performed by two SQUG-qualified engineers. This interim solution is judged to be acceptable and has been accepted by Operations (Shift Manager).

Status: ☒ Y ☐ N ☐ U

Seismic Walkdown Checklist (SWC)

Equipment ID No.: D03-0903-0028

Equipment Class: (20) Instrumentation and Control Panels and Cabinets

Equipment Description: CONTROL PANELS/ Control Panel 903-28

Comments

SEWS Anchorage Notes:

Panel is 10' wide (long). Anchored by 4 -3/8" concrete expansion anchors (1 in or near each corner).

Seismic Walkdown Team: J. Griffith & M. Wodarczyk - 7/30/2012

Evaluated by:

James D. Griffith

James Griffith

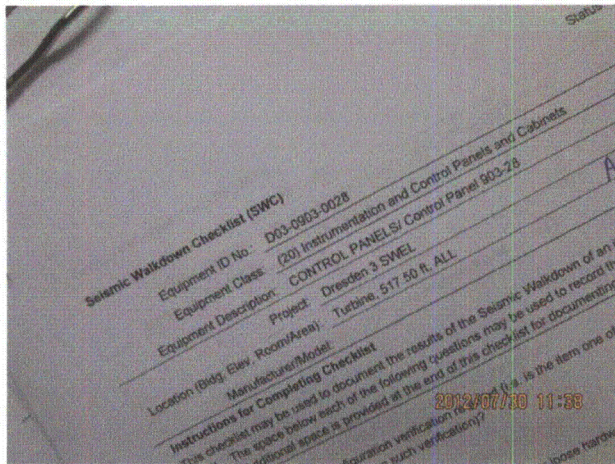
Date: 10/24/2012

Michael J. Wodarczyk

Michael Wodarczyk

10/24/2012

Photos



20120730-Dresden-3 121



20120730-Dresden-3 122

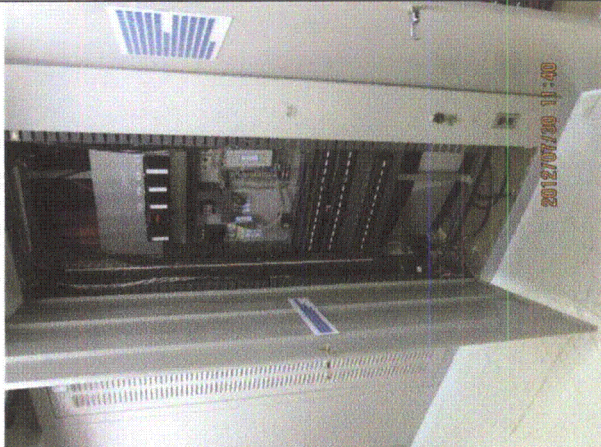
Status: ☒ Y ☐ N ☐ U

Seismic Walkdown Checklist (SWC)

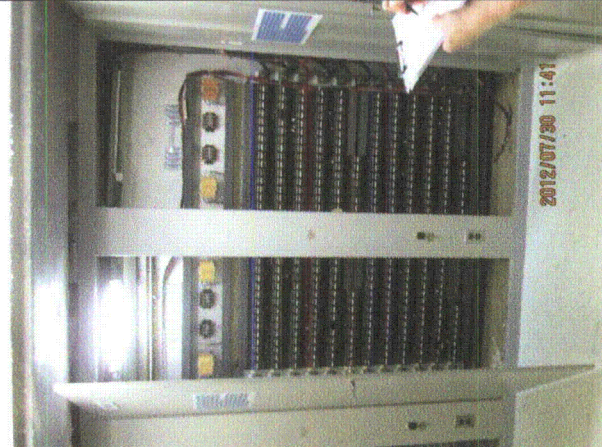
Equipment ID No.: D03-0903-0028

Equipment Class: (20) Instrumentation and Control Panels and Cabinets

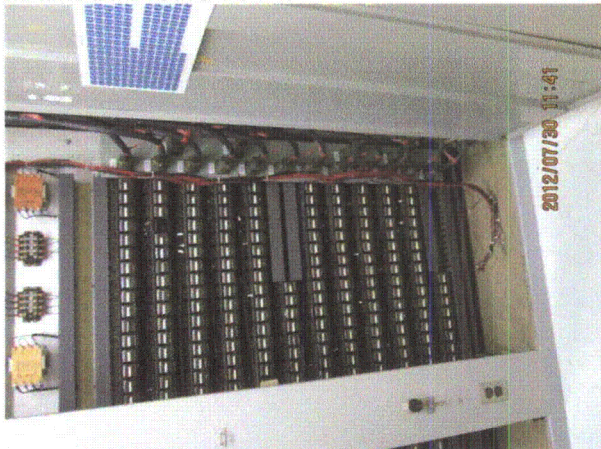
Equipment Description: CONTROL PANELS/ Control Panel 903-28



20120730-Dresden-3 123



20120730-Dresden-3 124



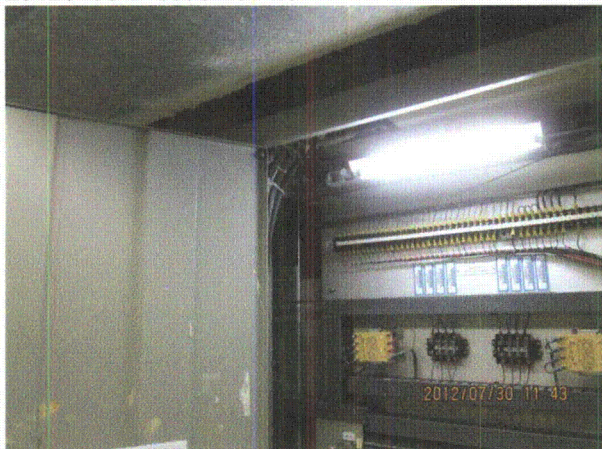
20120730-Dresden-3 125



20120730-Dresden-3 126



20120730-Dresden-3 127



20120730-Dresden-3 128

Status: ☒ Y ☐ N ☐ U

Seismic Walkdown Checklist (SWC)

Equipment ID No.: D03-0903-0028

Equipment Class: (20) Instrumentation and Control Panels and Cabinets

Equipment Description: CONTROL PANELS/ Control Panel 903-28



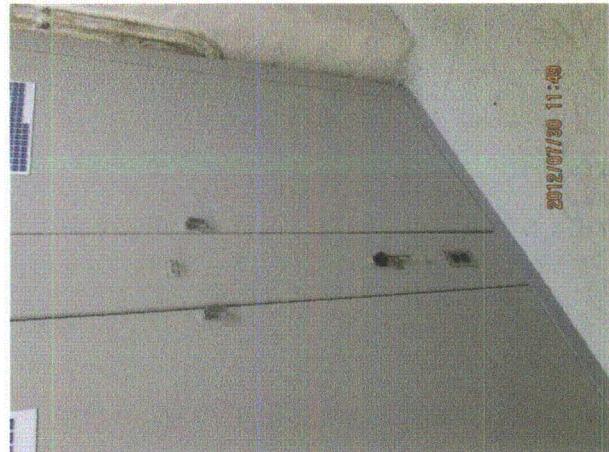
20120730-Dresden-3 129



20120730-Dresden-3 130



20120730-Dresden-3 131



20120730-Dresden-3 132



20120730-Dresden-3 133

Status: ☒ Y ☐ N ☐ U

Seismic Walkdown Checklist (SWC)

Equipment ID No.: D03-0903-0039

Equipment Class: (20) Instrumentation and Control Panels and Cabinets

Equipment Description: CONTROL PANELS/ Control Panel 903-39

Project: Dresden 3 SWEL

Location (Bldg, Elev, Room/Area): Turbine, 517.50 ft, ALL

Manufacturer/Model: _____

Instructions for Completing Checklist

This checklist may be used to document the results of the Seismic Walkdown of an item of equipment on the SWEL. The space below each of the following questions may be used to record the results of judgments and findings. Additional space is provided at the end of this checklist for documenting other comments.

Anchorage

1. Is anchorage configuration verification required (i.e., is the item one of the 50% of SWEL items requiring such verification)? Yes

2. Is the anchorage free of bent, broken, missing or loose hardware? Yes

3. Is the anchorage free of corrosion that is more than mild surface oxidation? Yes

4. Is the anchorage free of visible cracks in the concrete near the anchors? Yes

5. Is the anchorage configuration consistent with plant documentation? (Note: This question only applies if the item is one of the 50% for which an anchorage configuration verification is required.) Yes

6. Based on the above anchorage evaluations, is the anchorage free of potentially adverse seismic conditions? Yes

Status: ☒ Y ☐ N ☐ U

Seismic Walkdown Checklist (SWC)

Equipment ID No.: D03-0903-0039

Equipment Class: (20) Instrumentation and Control Panels and Cabinets

Equipment Description: CONTROL PANELS/ Control Panel 903-39

Interaction Effects

7. Are soft targets free from impact by nearby equipment or structures? Yes
8. Are overhead equipment, distribution systems, ceiling tiles and lighting, and masonry block walls not likely to collapse onto the equipment? Yes
Extension chord whip against cabinet is judged to not be a credible concern.
9. Do attached lines have adequate flexibility to avoid damage? Yes
10. Based on the above seismic interaction evaluations, is equipment free of potentially adverse seismic interaction effects? Yes

Other Adverse Conditions

11. Have you looked for and found no adverse seismic conditions that could adversely affect the safety functions of the equipment? Yes
*All panel doors opened. No other adverse seismic conditions.
No photos allowed by Operations.*

Comments

SEWS Anchorage Notes:

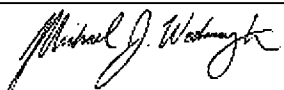
Anchored by 4 -3/8" concrete expansion anchors (1 in or near each corner).

Seismic Walkdown Team: J. Griffith & M. Wodarczyk - 7/30/2012

Per Operations, no photos were permitted inside this control panel to view anchorages.

Evaluated by:  James Griffith

Date: 9/30/2012



Michael Wodarczyk

9/30/2012

Status: ☒ Y ☐ N ☐ U

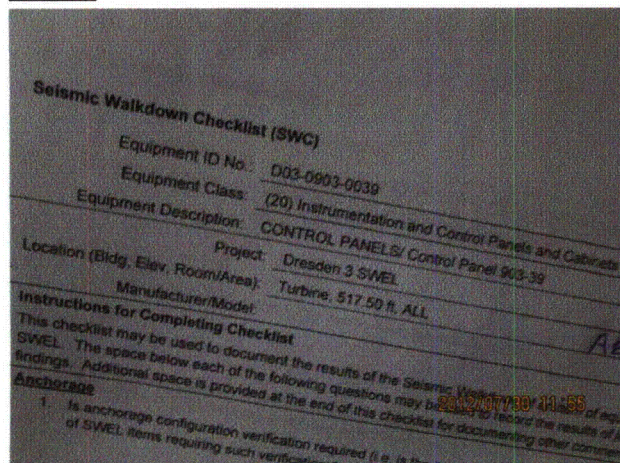
Seismic Walkdown Checklist (SWC)

Equipment ID No.: D03-0903-0039

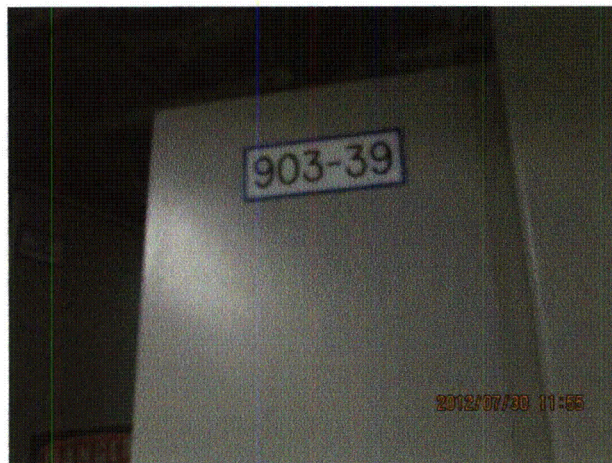
Equipment Class: (20) Instrumentation and Control Panels and Cabinets

Equipment Description: CONTROL PANELS/ Control Panel 903-39

Photos



20120730-Dresden-3 134



20120730-Dresden-3 135

Status: ☒ Y ☐ N ☐ U

Seismic Walkdown Checklist (SWC)

Equipment ID No.: D03-0903-0039

Equipment Class: (20) Instrumentation and Control Panels and Cabinets

Equipment Description: CONTROL PANELS/ Control Panel 903-39



20120730-Dresden-3 136



20120730-Dresden-3 137

Status: ☒ Y ☐ N ☐ U

Seismic Walkdown Checklist (SWC)

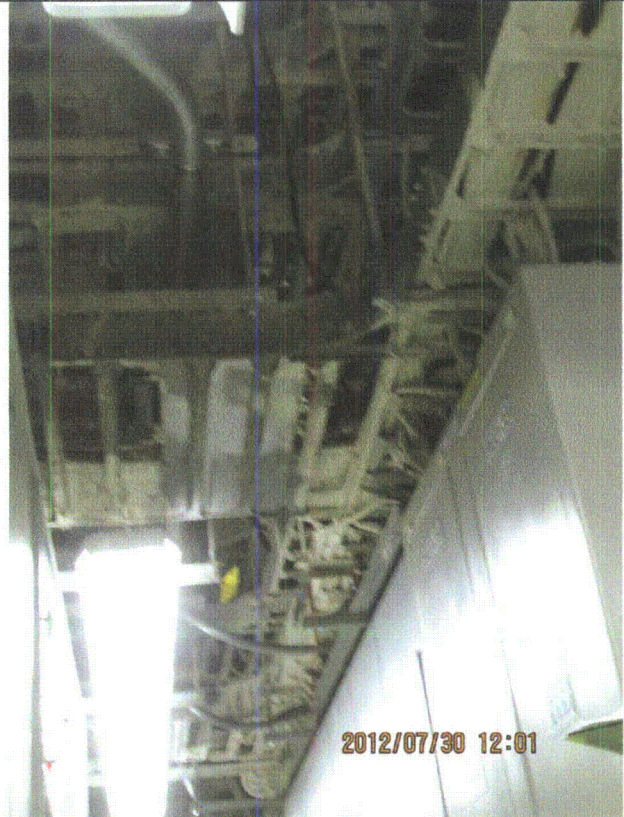
Equipment ID No.: D03-0903-0039

Equipment Class: (20) Instrumentation and Control Panels and Cabinets

Equipment Description: CONTROL PANELS/ Control Panel 903-39



20120730-Dresden-3 138



20120730-Dresden-3 139

Status: ☒ Y ☐ N ☐ U

Seismic Walkdown Checklist (SWC)

Equipment ID No.: D03-0903-0039

Equipment Class: (20) Instrumentation and Control Panels and Cabinets

Equipment Description: CONTROL PANELS/ Control Panel 903-39



20120730-Dresden-3 140

Status: ☒ Y ☐ N ☐ U

Seismic Walkdown Checklist (SWC)

Equipment ID No.: D03-0923-0005 & -0005A

Equipment Class: (20) Instrumentation and Control Panels and Cabinets

Equipment Description: CONTROL PANELS/ Control Panel 923-5 & 923-5A

Project: Dresden 3 SWEL

Location (Bldg, Elev, Room/Area): Control Room, 534.00 ft, ALL

Manufacturer/Model: _____

Instructions for Completing Checklist

This checklist may be used to document the results of the Seismic Walkdown of an item of equipment on the SWEL. The space below each of the following questions may be used to record the results of judgments and findings. Additional space is provided at the end of this checklist for documenting other comments.

Anchorage

1. Is anchorage configuration verification required (i.e., is the item one of the 50% of SWEL items requiring such verification)? Yes

2. Is the anchorage free of bent, broken, missing or loose hardware? Yes

3. Is the anchorage free of corrosion that is more than mild surface oxidation? Yes

4. Is the anchorage free of visible cracks in the concrete near the anchors? Yes

5. Is the anchorage configuration consistent with plant documentation? (Note: This question only applies if the item is one of the 50% for which an anchorage configuration verification is required.) Yes

6. Based on the above anchorage evaluations, is the anchorage free of potentially adverse seismic conditions? Yes
Viewed one internal anchor each for cabinets 0005 and 0005A. Remaining anchors could not be viewed due to cabling and limitations on access. Anchors viewed matched documentation, therefore it is reasonable to conclude that the anchors match plant documentation without further verification.

Status: ☒ Y ☐ N ☐ U

Seismic Walkdown Checklist (SWC)

Equipment ID No.: D03-0923-0005 & -0005A

Equipment Class: (20) Instrumentation and Control Panels and Cabinets

Equipment Description: CONTROL PANELS/ Control Panel 923-5 & 923-5A

Interaction Effects

7. Are soft targets free from impact by nearby equipment or structures? Yes

Doors slightly out of plumb at top and/or bottom. Doors were properly latched and judged to be acceptable.

8. Are overhead equipment, distribution systems, ceiling tiles and lighting, and masonry block walls not likely to collapse onto the equipment? Yes

9. Do attached lines have adequate flexibility to avoid damage? Yes

10. Based on the above seismic interaction evaluations, is equipment free of potentially adverse seismic interaction effects? Yes

Other Adverse Conditions

11. Have you looked for and found no adverse seismic conditions that could adversely affect the safety functions of the equipment? Yes

*All panel doors opened. No other adverse seismic conditions.
No photos allowed by Operations.*

*Panel 944-5 mounted on wall behind 0005 panel has door that does not close.
Door is currently held closed with tape. Panel 944-5 door swing judged to not be a concern.*

Comments

SEWS Anchorage Notes:

The 0005 panel is anchored by 2 tabs, one on one side and none visible on back. All anchored by welded friction clips (clips are welded to panel base channels). Clips are bolted by a 3/4" concrete expansion anchors. Clips are 3/8" thick, 2" wide and about 5" long. The effective moment arm is about 1-3" long. The 0005A panel is anchored 3 - 1/2" concrete expansion anchors (one on each of 3 sides). Panels are top braced to R/C wall by 2 1/2" expansion anchors each.

Seismic Walkdown Team: J. Griffith & M. Wodarczyk - 7/30/2012

Per Operations, no photos were permitted inside cabinets.

Status: ☒ Y ☐ N ☐ U

Seismic Walkdown Checklist (SWC)

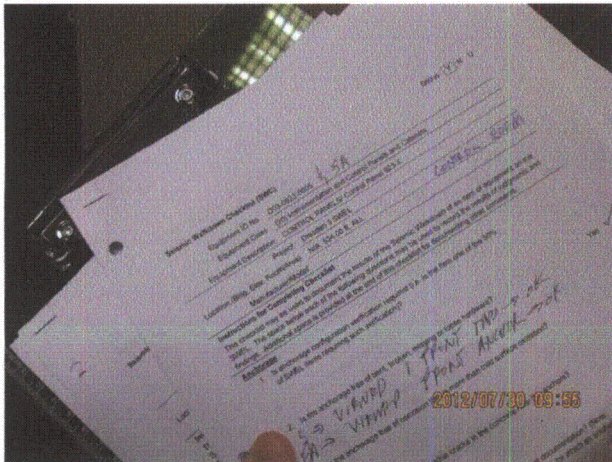
Equipment ID No.: D03-0923-0005 & -0005A

Equipment Class: (20) Instrumentation and Control Panels and Cabinets

Equipment Description: CONTROL PANELS/ Control Panel 923-5 & 923-5A

Evaluated by: James D. Griffith James Griffith Date: 9/30/2012
Michael J. Wodarczyk Michael Wodarczyk 9/30/2012

Photos



20120730-Dresden-3 009



20120730-Dresden-3 010

Status: ☒ Y ☐ N ☐ U

Seismic Walkdown Checklist (SWC)

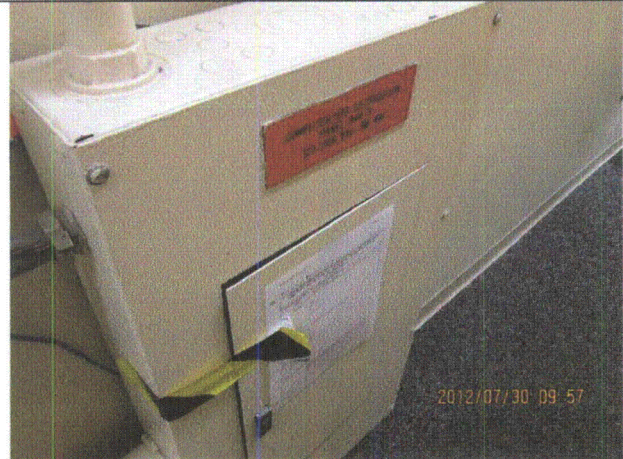
Equipment ID No.: D03-0923-0005 & -0005A

Equipment Class: (20) Instrumentation and Control Panels and Cabinets

Equipment Description: CONTROL PANELS/ Control Panel 923-5 & 923-5A



20120730-Dresden-3 011



20120730-Dresden-3 012

Status: ☒ Y ☐ N ☐ U

Seismic Walkdown Checklist (SWC)

Equipment ID No.: D03-0923-0005 & -0005A

Equipment Class: (20) Instrumentation and Control Panels and Cabinets

Equipment Description: CONTROL PANELS/ Control Panel 923-5 & 923-5A



20120730-Dresden-3 013

Status: ☒ Y ☐ N ☐ U

Seismic Walkdown Checklist (SWC)

Equipment ID No.: D03-1001-0002AV20

Equipment Class: (8) Motor-Operated and Solenoid-Operated Valves

Equipment Description: SHUTDOWN COOLING/ Shut Down Pumps Suction Line Valve

Project: Dresden 3 SWEL

Location (Bldg, Elev, Room/Area): Reactor, 517.50 ft, ALL

Manufacturer/Model: _____

Instructions for Completing Checklist

This checklist may be used to document the results of the Seismic Walkdown of an item of equipment on the SWEL. The space below each of the following questions may be used to record the results of judgments and findings. Additional space is provided at the end of this checklist for documenting other comments.

Anchorage

- | | |
|--|----------------|
| 1. Is anchorage configuration verification required (i.e., is the item one of the 50% of SWEL items requiring such verification)? | No |
| 2. Is the anchorage free of bent, broken, missing or loose hardware? | Not Applicable |
| 3. Is the anchorage free of corrosion that is more than mild surface oxidation? | Not Applicable |
| 4. Is the anchorage free of visible cracks in the concrete near the anchors? | Not Applicable |
| 5. Is the anchorage configuration consistent with plant documentation? (Note: This question only applies if the item is one of the 50% for which an anchorage configuration verification is required.) | Not Applicable |
| 6. Based on the above anchorage evaluations, is the anchorage free of potentially adverse seismic conditions? | Yes |

Interaction Effects

- | | |
|---|-----|
| 7. Are soft targets free from impact by nearby equipment or structures? | Yes |
|---|-----|

Status: ☒ Y ☐ N ☐ U

Seismic Walkdown Checklist (SWC)

Equipment ID No.: D03-1001-0002AV20

Equipment Class: (8) Motor-Operated and Solenoid-Operated Valves

Equipment Description: SHUTDOWN COOLING/ Shut Down Pumps Suction Line Valve

8. Are overhead equipment, distribution systems, ceiling tiles and lighting, and masonry block walls not likely to collapse onto the equipment? Yes
Adjacent masonry wall is safety-related.
9. Do attached lines have adequate flexibility to avoid damage? Yes
10. Based on the above seismic interaction evaluations, is equipment free of potentially adverse seismic interaction effects? Yes

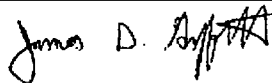
Other Adverse Conditions

11. Have you looked for and found no adverse seismic conditions that could adversely affect the safety functions of the equipment? Yes
Robust valve body and operator near gallery judged to be acceptable.

Comments

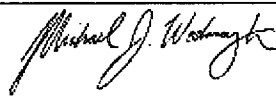
Seismic Walkdown Team: J. Griffith & M. Wodarczyk - 8/3/2012

Evaluated by:



James Griffith

Date: 9/30/2012



Michael Wodarczyk

9/30/2012

Status: ☒ Y ☐ N ☐ U

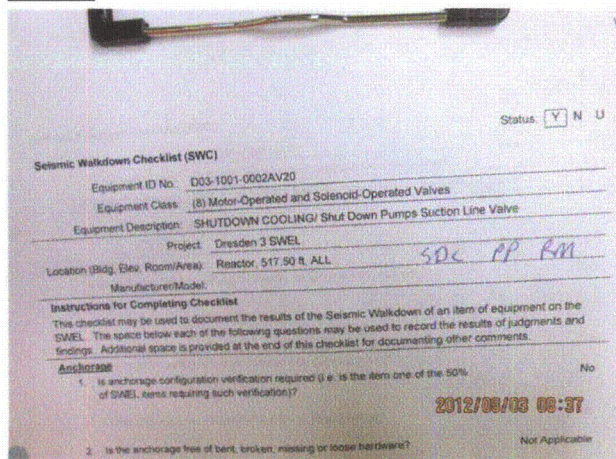
Seismic Walkdown Checklist (SWC)

Equipment ID No.: D03-1001-0002AV20

Equipment Class: (8) Motor-Operated and Solenoid-Operated Valves

Equipment Description: SHUTDOWN COOLING/ Shut Down Pumps Suction Line Valve

Photos



20120803-Dresden-3 001



20120803-Dresden-3 002



20120803-Dresden-3 003



20120803-Dresden-3 004

Status: ☒ Y ☐ N ☐ U

Seismic Walkdown Checklist (SWC)

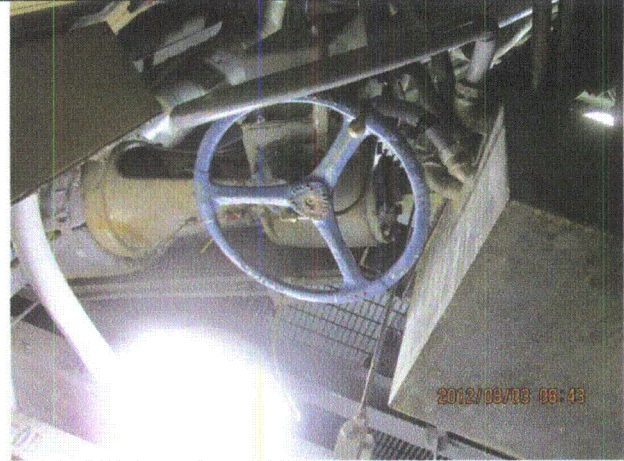
Equipment ID No.: D03-1001-0002AV20

Equipment Class: (8) Motor-Operated and Solenoid-Operated Valves

Equipment Description: SHUTDOWN COOLING/ Shut Down Pumps Suction Line Valve



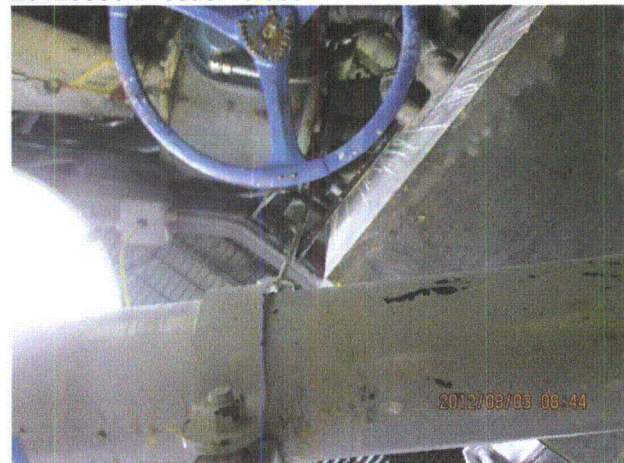
20120803-Dresden-3 005



20120803-Dresden-3 006



20120803-Dresden-3 007



20120803-Dresden-3 008

Status: ☒ Y ☐ N ☐ U

Seismic Walkdown Checklist (SWC)

Equipment ID No.: D03-1001-0002AV20

Equipment Class: (8) Motor-Operated and Solenoid-Operated Valves

Equipment Description: SHUTDOWN COOLING/ Shut Down Pumps Suction Line Valve



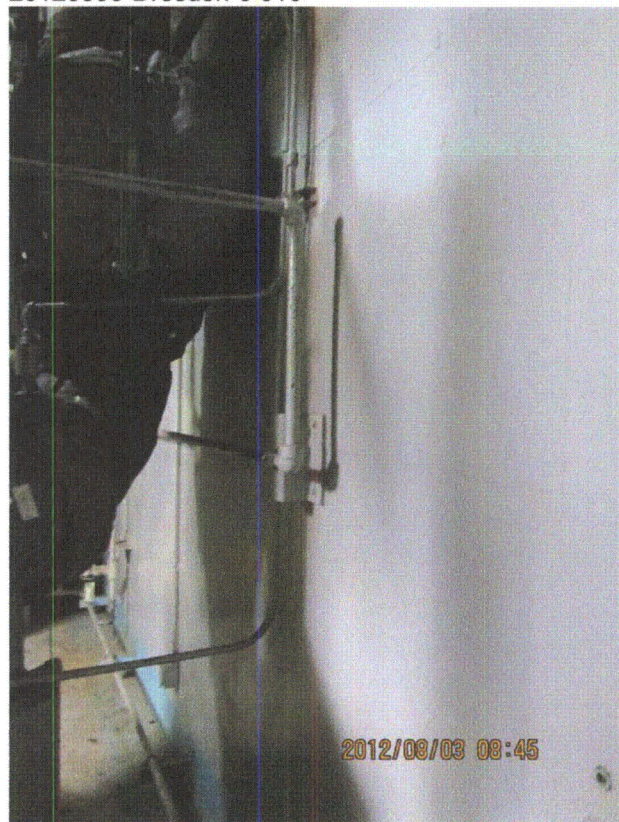
20120803-Dresden-3 009



20120803-Dresden-3 010



20120803-Dresden-3 011



20120803-Dresden-3 012

Status: ☒ Y ☐ N ☐ U

Seismic Walkdown Checklist (SWC)

Equipment ID No.: D03-1001-0002AV20

Equipment Class: (8) Motor-Operated and Solenoid-Operated Valves

Equipment Description: SHUTDOWN COOLING/ Shut Down Pumps Suction Line Valve



20120803-Dresden-3 013



20120803-Dresden-3 014



20120803-Dresden-3 015



20120803-Dresden-3 016

Status: ☒ Y ☐ N ☐ U

Seismic Walkdown Checklist (SWC)

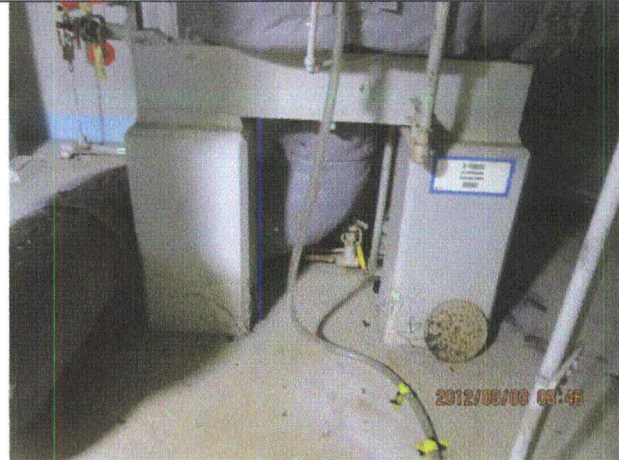
Equipment ID No.: D03-1001-0002AV20

Equipment Class: (8) Motor-Operated and Solenoid-Operated Valves

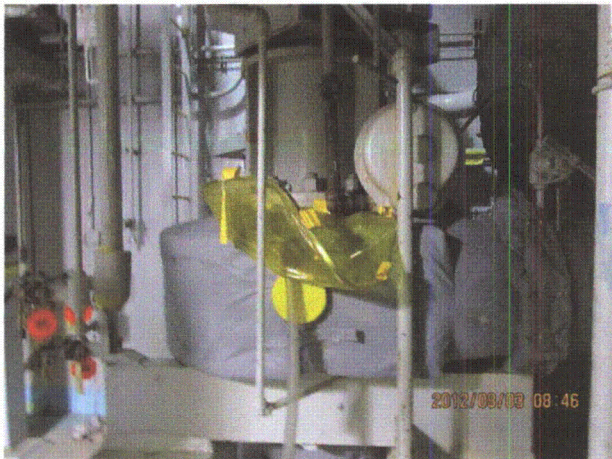
Equipment Description: SHUTDOWN COOLING/ Shut Down Pumps Suction Line Valve



20120803-Dresden-3 017



20120803-Dresden-3 018



20120803-Dresden-3 019



20120803-Dresden-3 020

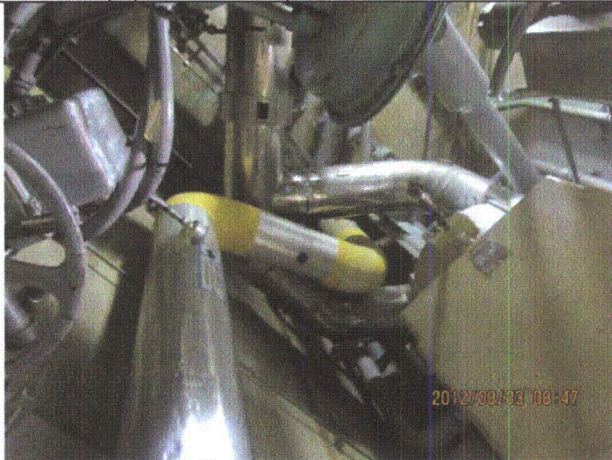
Status: ☒ Y ☐ N ☐ U

Seismic Walkdown Checklist (SWC)

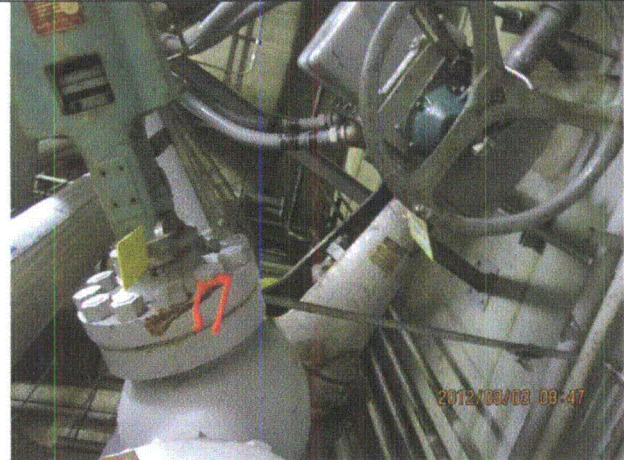
Equipment ID No.: D03-1001-0002AV20

Equipment Class: (8) Motor-Operated and Solenoid-Operated Valves

Equipment Description: SHUTDOWN COOLING/ Shut Down Pumps Suction Line Valve



20120803-Dresden-3 021



20120803-Dresden-3 022



20120803-Dresden-3 023



20120803-Dresden-3 024

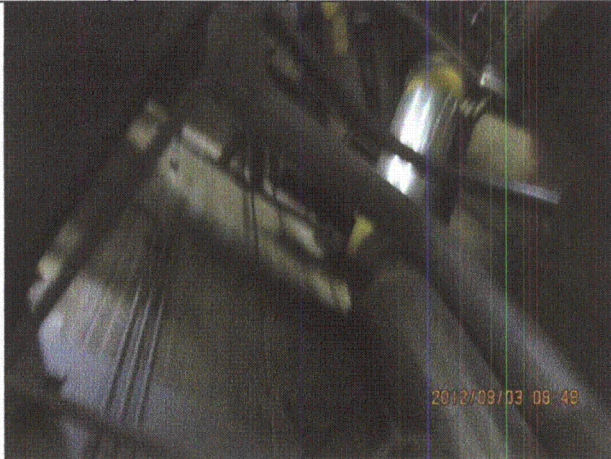
Status: ☒ Y ☐ N ☐ U

Seismic Walkdown Checklist (SWC)

Equipment ID No.: D03-1001-0002AV20

Equipment Class: (8) Motor-Operated and Solenoid-Operated Valves

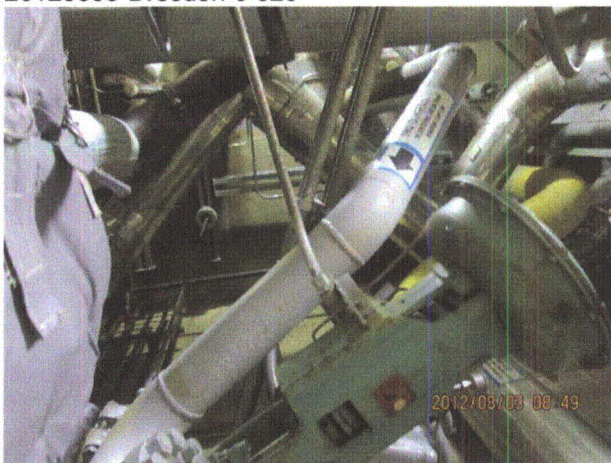
Equipment Description: SHUTDOWN COOLING/ Shut Down Pumps Suction Line Valve



20120803-Dresden-3 025



20120803-Dresden-3 026



20120803-Dresden-3 027



20120803-Dresden-3 028

Status: ☒ Y ☐ N ☐ U

Seismic Walkdown Checklist (SWC)

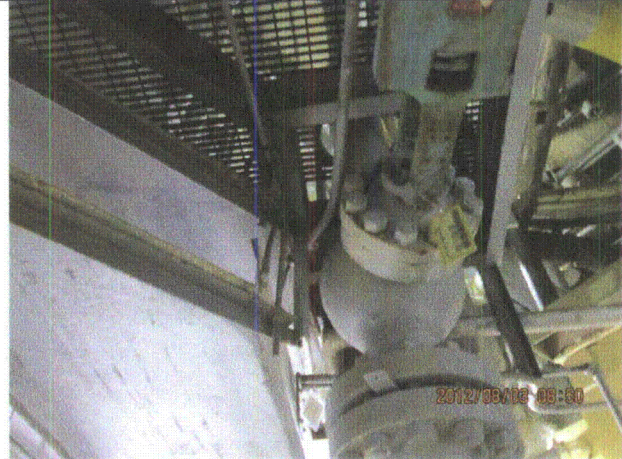
Equipment ID No.: D03-1001-0002AV20

Equipment Class: (8) Motor-Operated and Solenoid-Operated Valves

Equipment Description: SHUTDOWN COOLING/ Shut Down Pumps Suction Line Valve



20120803-Dresden-3 029



20120803-Dresden-3 030



20120803-Dresden-3 031



20120803-Dresden-3 032

Status: ☒ Y ☐ N ☐ U

Seismic Walkdown Checklist (SWC)

Equipment ID No.: D03-1001-0005AV20

Equipment Class: (8) Motor-Operated and Solenoid-Operated Valves

Equipment Description: SHUTDOWN COOLING/ Injection Line Valve

Project: Dresden 3 SWEL

Location (Bldg, Elev, Room/Area): Reactor, 476.50 ft, ALL

Manufacturer/Model: _____

Instructions for Completing Checklist

This checklist may be used to document the results of the Seismic Walkdown of an item of equipment on the SWEL. The space below each of the following questions may be used to record the results of judgments and findings. Additional space is provided at the end of this checklist for documenting other comments.

Anchorage

1. Is anchorage configuration verification required (i.e., is the item one of the 50% of SWEL items requiring such verification)? No

2. Is the anchorage free of bent, broken, missing or loose hardware? Not Applicable

3. Is the anchorage free of corrosion that is more than mild surface oxidation? Not Applicable

4. Is the anchorage free of visible cracks in the concrete near the anchors? Not Applicable

5. Is the anchorage configuration consistent with plant documentation? (Note: This question only applies if the item is one of the 50% for which an anchorage configuration verification is required.) Not Applicable

6. Based on the above anchorage evaluations, is the anchorage free of potentially adverse seismic conditions? Yes

Status: ☒ Y ☐ N ☐ U

Seismic Walkdown Checklist (SWC)

Equipment ID No.: D03-1001-0005AV20

Equipment Class: (8) Motor-Operated and Solenoid-Operated Valves

Equipment Description: SHUTDOWN COOLING/ Injection Line Valve

Interaction Effects

7. Are soft targets free from impact by nearby equipment or structures? Yes

Approximately 1/2-inch gap between valve 3-1001-5A yoke and operator and adjacent valve yoke. All are robust and judged to be acceptable.

8. Are overhead equipment, distribution systems, ceiling tiles and lighting, and masonry block walls not likely to collapse onto the equipment? Yes

9. Do attached lines have adequate flexibility to avoid damage? Yes

10. Based on the above seismic interaction evaluations, is equipment free of potentially adverse seismic interaction effects? Yes

Other Adverse Conditions

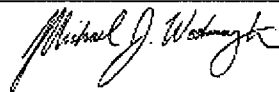
11. Have you looked for and found no adverse seismic conditions that could adversely affect the safety functions of the equipment? Yes

Comments

Seismic Walkdown Team: J. Griffith & M. Wodarczyk - 8/3/2012

Evaluated by: James D. Griffith James Griffith

Date: 9/30/2012



Michael Wodarczyk

9/30/2012

Status: ☒ Y ☐ N ☐ U

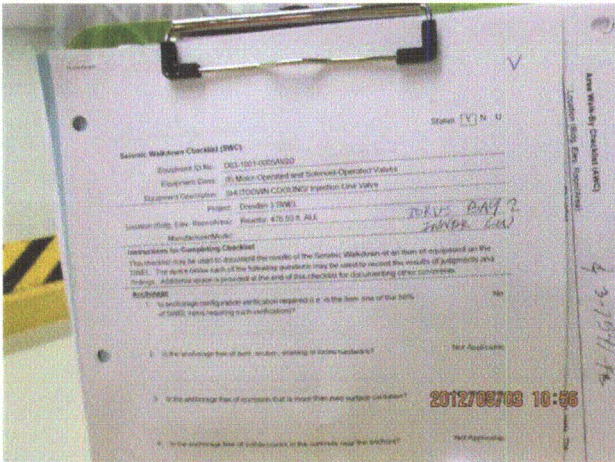
Seismic Walkdown Checklist (SWC)

Equipment ID No.: D03-1001-0005AV20

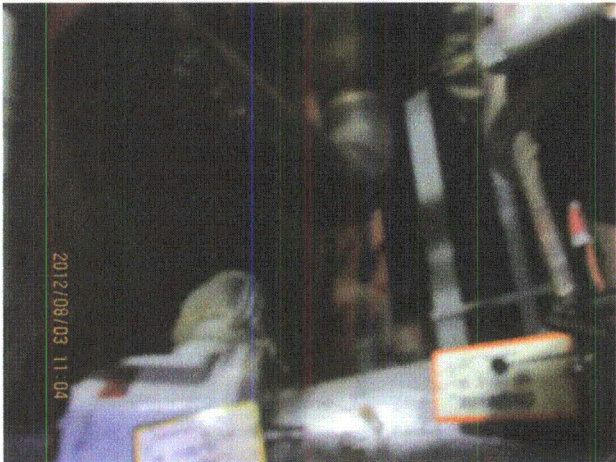
Equipment Class: (8) Motor-Operated and Solenoid-Operated Valves

Equipment Description: SHUTDOWN COOLING/ Injection Line Valve

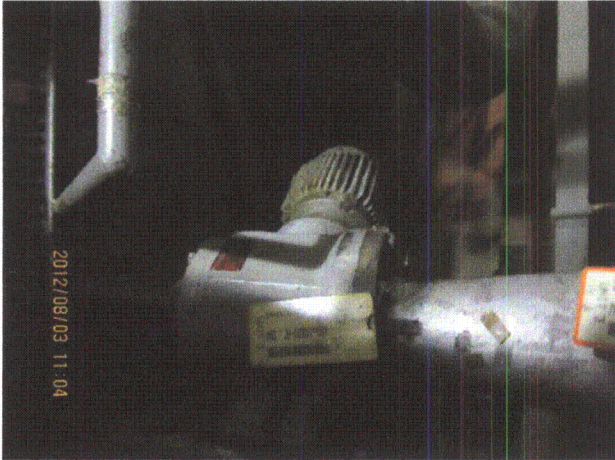
Photos



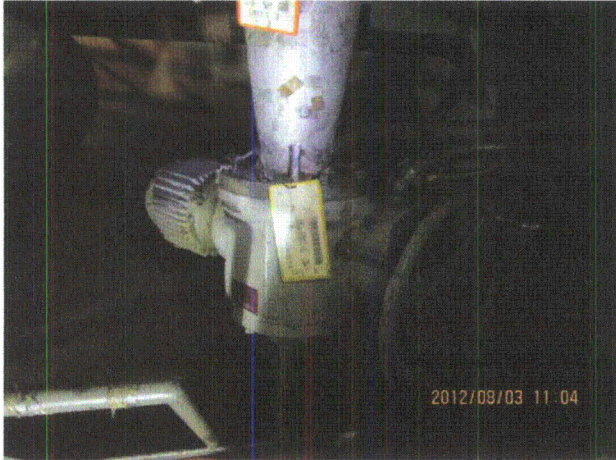
20120803-Dresden-3 138



20120803-Dresden-3 139



20120803-Dresden-3 140



20120803-Dresden-3 141

Status: ☒ Y ☐ N ☐ U

Seismic Walkdown Checklist (SWC)

Equipment ID No.: D03-1001-0005AV20

Equipment Class: (8) Motor-Operated and Solenoid-Operated Valves

Equipment Description: SHUTDOWN COOLING/ Injection Line Valve



20120803-Dresden-3 142



20120803-Dresden-3 143



20120803-Dresden-3 144



20120803-Dresden-3 145

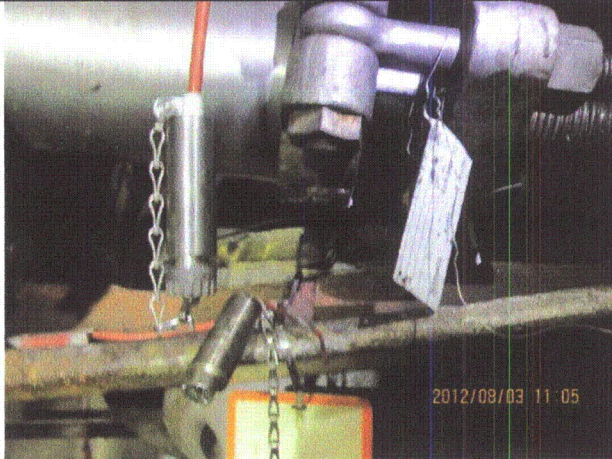
Status: ☒ Y ☐ N ☐ U

Seismic Walkdown Checklist (SWC)

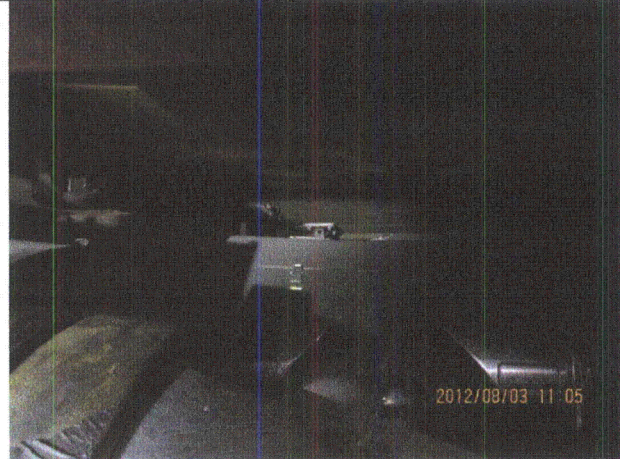
Equipment ID No.: D03-1001-0005AV20

Equipment Class: (8) Motor-Operated and Solenoid-Operated Valves

Equipment Description: SHUTDOWN COOLING/ Injection Line Valve



20120803-Dresden-3 146



20120803-Dresden-3 147



20120803-Dresden-3 148



20120803-Dresden-3 149

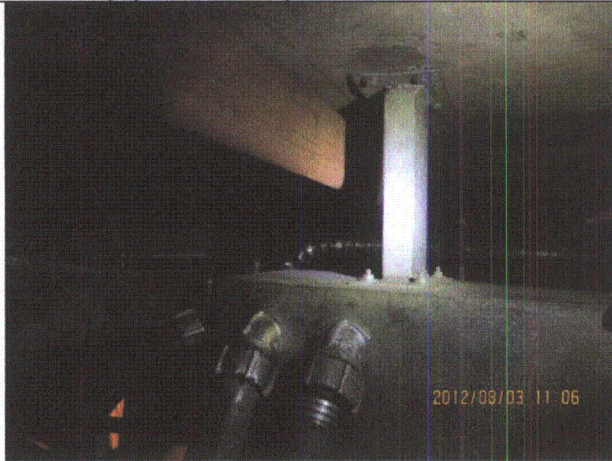
Status: ☒ Y ☐ N ☐ U

Seismic Walkdown Checklist (SWC)

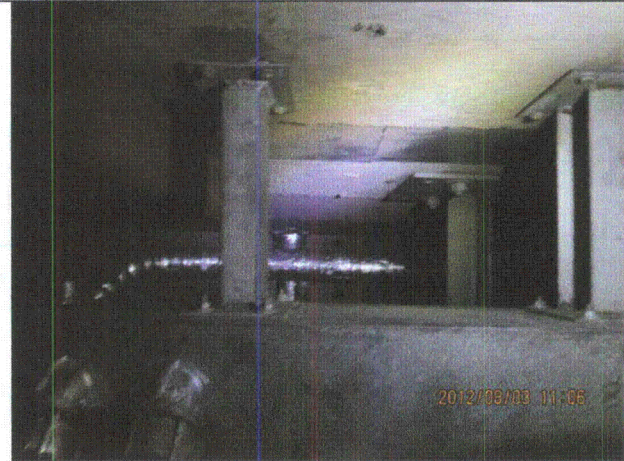
Equipment ID No.: D03-1001-0005AV20

Equipment Class: (8) Motor-Operated and Solenoid-Operated Valves

Equipment Description: SHUTDOWN COOLING/ Injection Line Valve



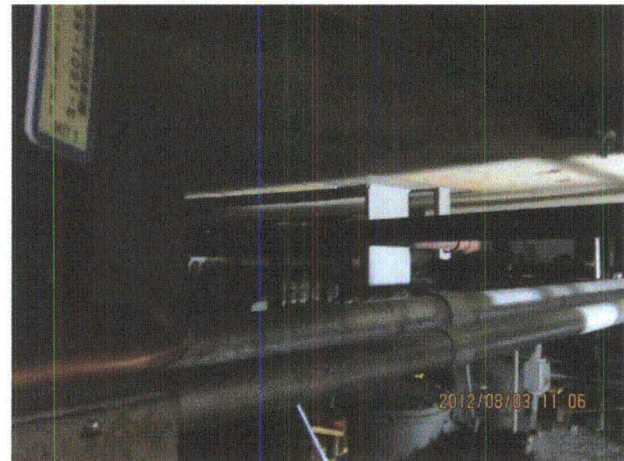
20120803-Dresden-3 150



20120803-Dresden-3 151



20120803-Dresden-3 152



20120803-Dresden-3 153

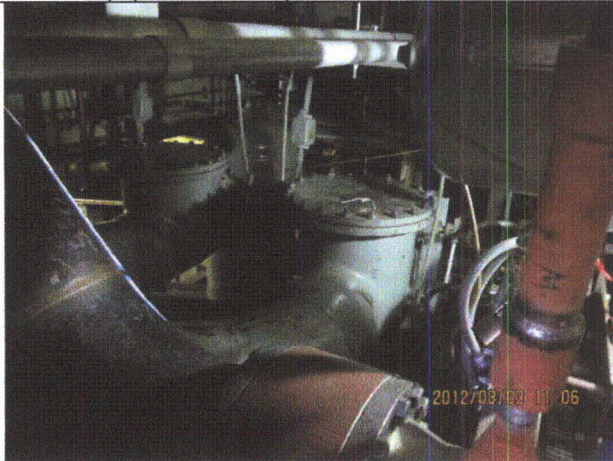
Status: ☒ Y ☐ N ☐ U

Seismic Walkdown Checklist (SWC)

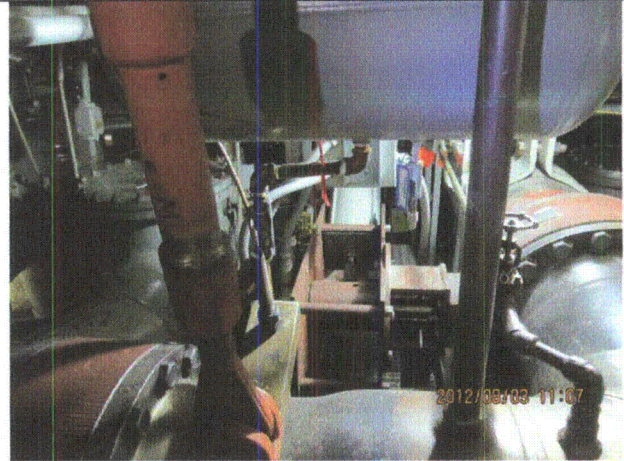
Equipment ID No.: D03-1001-0005AV20

Equipment Class: (8) Motor-Operated and Solenoid-Operated Valves

Equipment Description: SHUTDOWN COOLING/ Injection Line Valve



20120803-Dresden-3 154



20120803-Dresden-3 155



20120803-Dresden-3 156



20120803-Dresden-3 157

Status: ☒ Y ☐ N ☐ U

Seismic Walkdown Checklist (SWC)

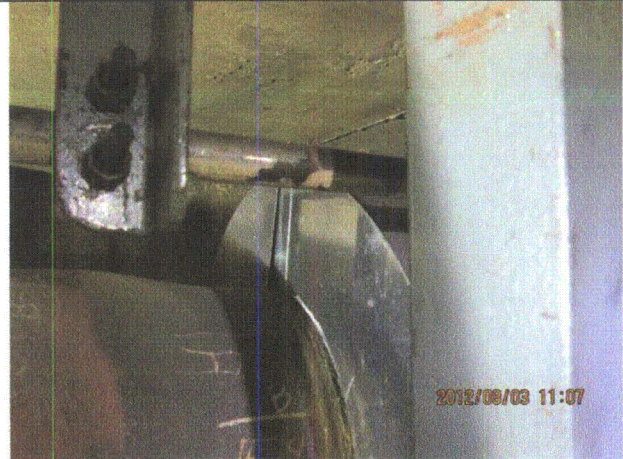
Equipment ID No.: D03-1001-0005AV20

Equipment Class: (8) Motor-Operated and Solenoid-Operated Valves

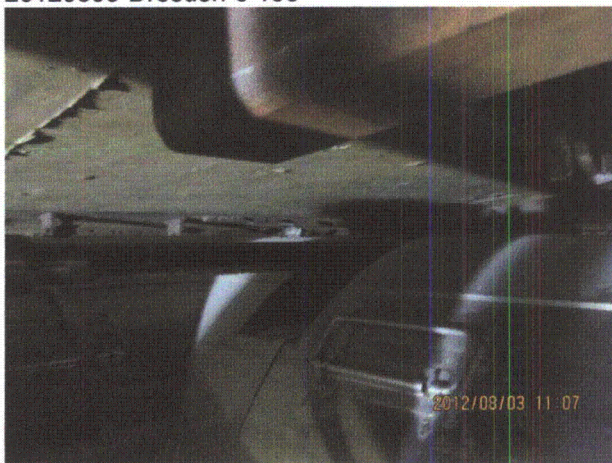
Equipment Description: SHUTDOWN COOLING/ Injection Line Valve



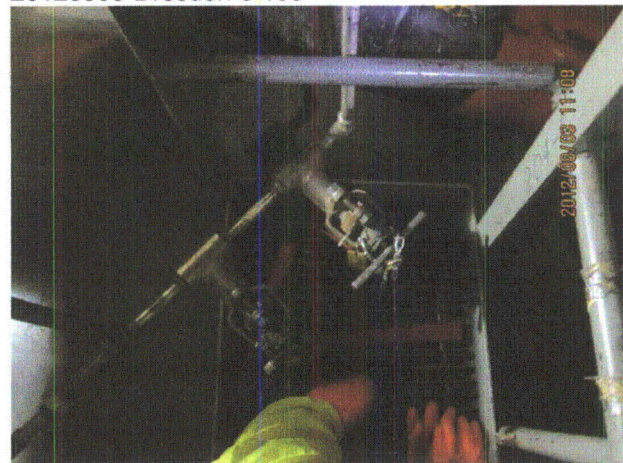
20120803-Dresden-3 158



20120803-Dresden-3 159



20120803-Dresden-3 160



20120803-Dresden-3 161

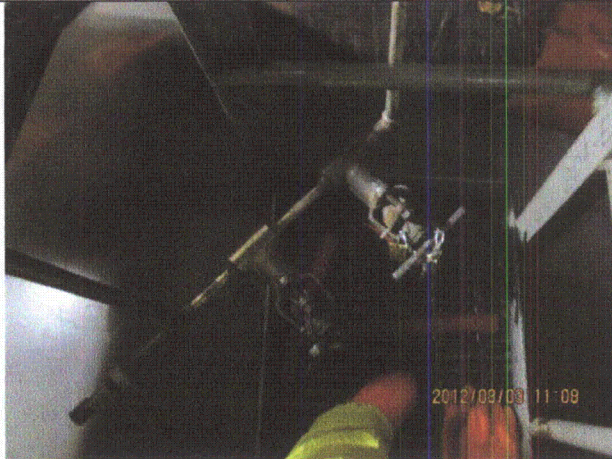
Status: ☒ Y ☐ N ☐ U

Seismic Walkdown Checklist (SWC)

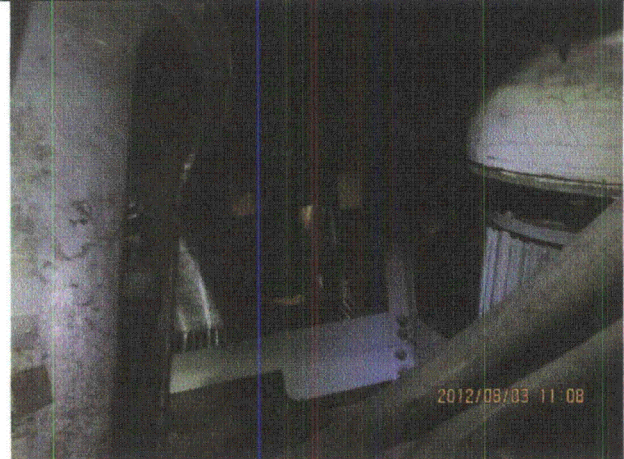
Equipment ID No.: D03-1001-0005AV20

Equipment Class: (8) Motor-Operated and Solenoid-Operated Valves

Equipment Description: SHUTDOWN COOLING/ Injection Line Valve



20120803-Dresden-3 162



20120803-Dresden-3 163



20120803-Dresden-3 164



20120803-Dresden-3 165

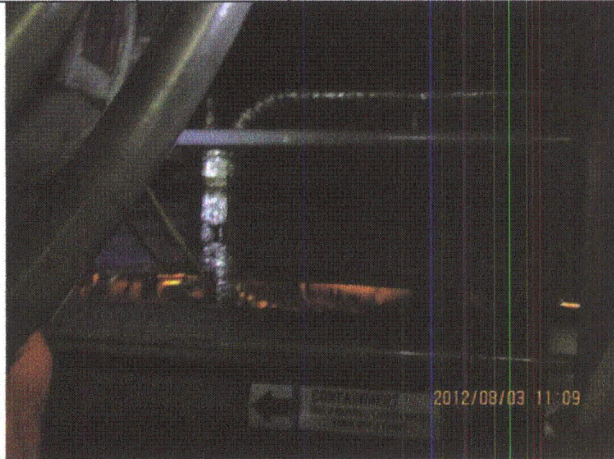
Status: ☒ Y ☐ N ☐ U

Seismic Walkdown Checklist (SWC)

Equipment ID No.: D03-1001-0005AV20

Equipment Class: (8) Motor-Operated and Solenoid-Operated Valves

Equipment Description: SHUTDOWN COOLING/ Injection Line Valve



20120803-Dresden-3 166



20120803-Dresden-3 167

Status: ☒ Y ☐ N ☐ U

Seismic Walkdown Checklist (SWC)

Equipment ID No.: D03-1501-0003AV20

Equipment Class: (8) Motor-Operated and Solenoid-Operated Valves

Equipment Description: CCSW/ Heat Exchanger Outlet Service Water Line Valve

Project: Dresden 3 SWEL

Location (Bldg, Elev, Room/Area): Reactor, 476.50 ft, ALL

Manufacturer/Model: _____

Instructions for Completing Checklist

This checklist may be used to document the results of the Seismic Walkdown of an item of equipment on the SWEL. The space below each of the following questions may be used to record the results of judgments and findings. Additional space is provided at the end of this checklist for documenting other comments.

Anchorage

1. Is anchorage configuration verification required (i.e., is the item one of the 50% of SWEL items requiring such verification)? No

2. Is the anchorage free of bent, broken, missing or loose hardware? Not Applicable

3. Is the anchorage free of corrosion that is more than mild surface oxidation? Not Applicable

4. Is the anchorage free of visible cracks in the concrete near the anchors? Not Applicable

5. Is the anchorage configuration consistent with plant documentation? (Note: This question only applies if the item is one of the 50% for which an anchorage configuration verification is required.) Not Applicable

6. Based on the above anchorage evaluations, is the anchorage free of potentially adverse seismic conditions? Yes

Status: ☒ Y ☐ N ☐ U

Seismic Walkdown Checklist (SWC)

Equipment ID No.: D03-1501-0003AV20

Equipment Class: (8) Motor-Operated and Solenoid-Operated Valves

Equipment Description: CCSW/ Heat Exchanger Outlet Service Water Line Valve

Interaction Effects

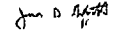
- | | |
|--|-----|
| 7. Are soft targets free from impact by nearby equipment or structures? | Yes |
| 8. Are overhead equipment, distribution systems, ceiling tiles and lighting, and masonry block walls not likely to collapse onto the equipment? <i>Light fixture with 1 of 2 chains unsupported at hard-wired cord end judged acceptable.</i> | Yes |
| 9. Do attached lines have adequate flexibility to avoid damage? | Yes |
| 10. Based on the above seismic interaction evaluations, is equipment free of potentially adverse seismic interaction effects? | Yes |

Other Adverse Conditions

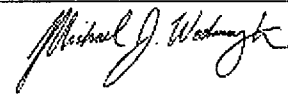
- | | |
|--|-----|
| 11. Have you looked for and found no adverse seismic conditions that could adversely affect the safety functions of the equipment? | Yes |
|--|-----|

Comments

Seismic Walkdown Team: J. Griffith & M. Wodarczyk - 8/1/2012

Evaluated by:  James Griffith

Date: 9/30/2012



Michael Wodarczyk

9/30/2012

Status: ☒ Y ☐ N ☐ U

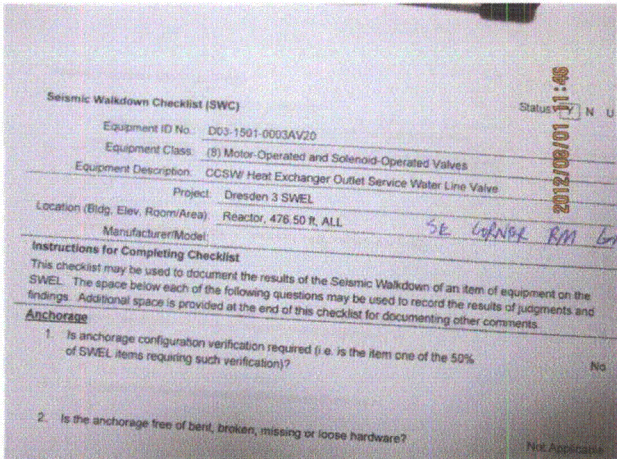
Seismic Walkdown Checklist (SWC)

Equipment ID No.: D03-1501-0003AV20

Equipment Class: (8) Motor-Operated and Solenoid-Operated Valves

Equipment Description: CCSW/ Heat Exchanger Outlet Service Water Line Valve

Photos



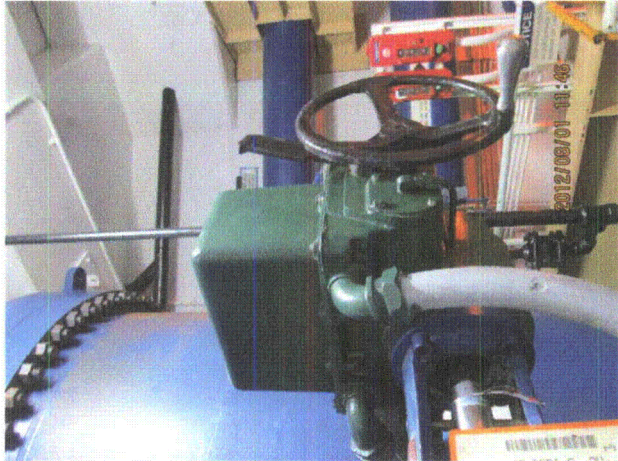
20120801-Dresden-3 219



20120801-Dresden-3 221



20120801-Dresden-3 220



20120801-Dresden-3 222

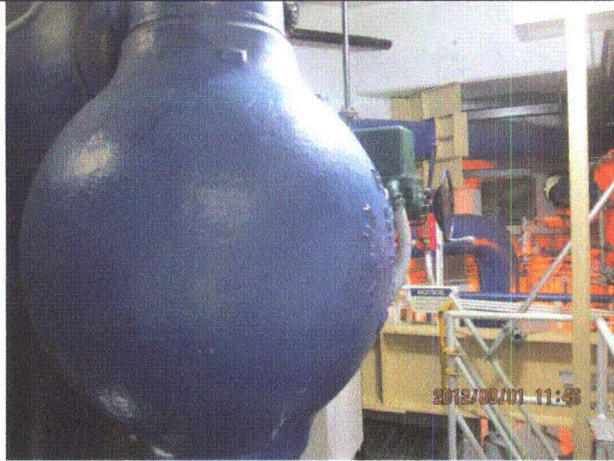
Status: ☒ Y ☐ N ☐ U

Seismic Walkdown Checklist (SWC)

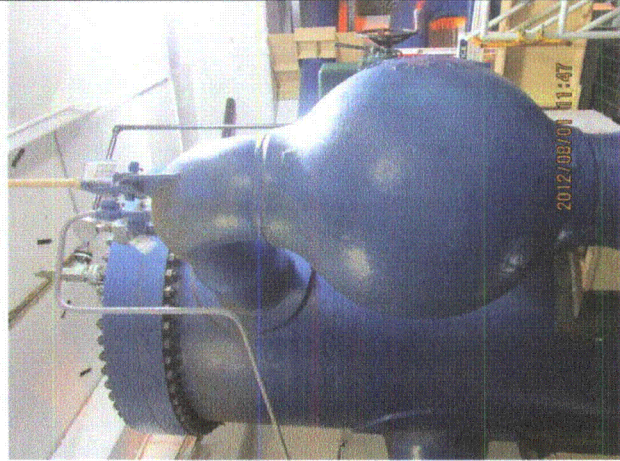
Equipment ID No.: D03-1501-0003AV20

Equipment Class: (8) Motor-Operated and Solenoid-Operated Valves

Equipment Description: CCSW/ Heat Exchanger Outlet Service Water Line Valve



20120801-Dresden-3 223



20120801-Dresden-3 224



20120801-Dresden-3 226

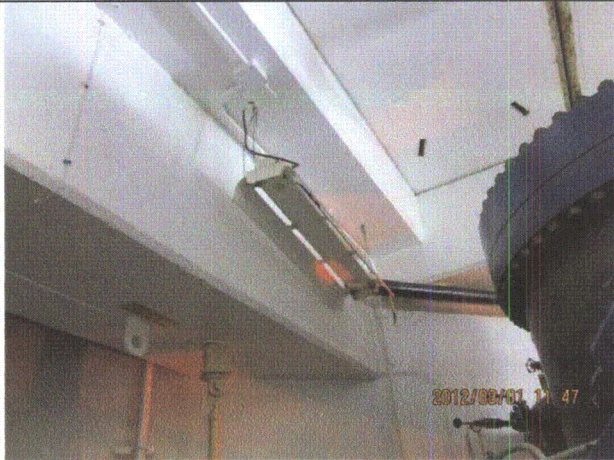
Status: ☒ Y ☐ N ☐ U

Seismic Walkdown Checklist (SWC)

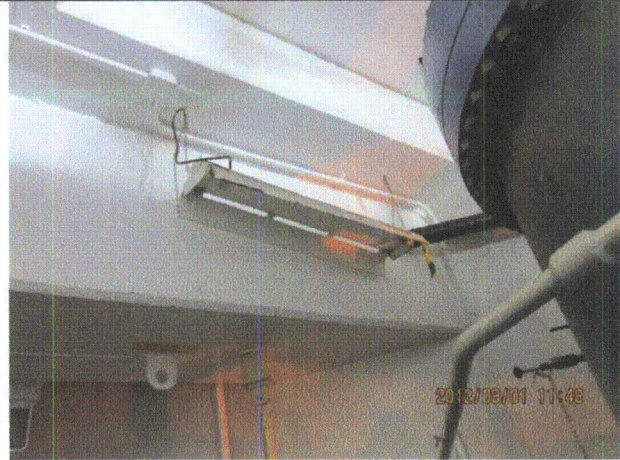
Equipment ID No.: D03-1501-0003AV20

Equipment Class: (8) Motor-Operated and Solenoid-Operated Valves

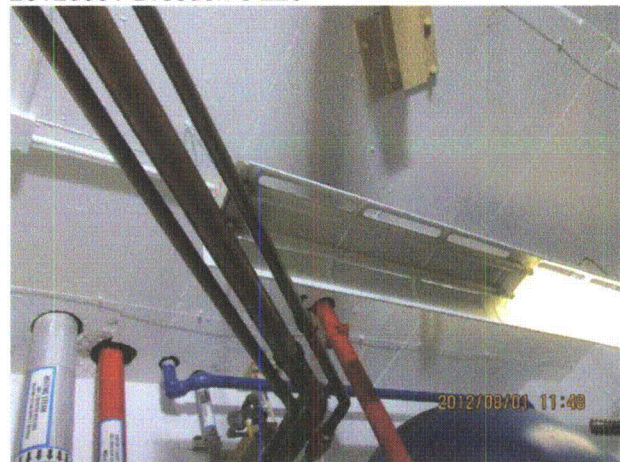
Equipment Description: CCSW/ Heat Exchanger Outlet Service Water Line Valve



20120801-Dresden-3 227



20120801-Dresden-3 228



20120801-Dresden-3 230

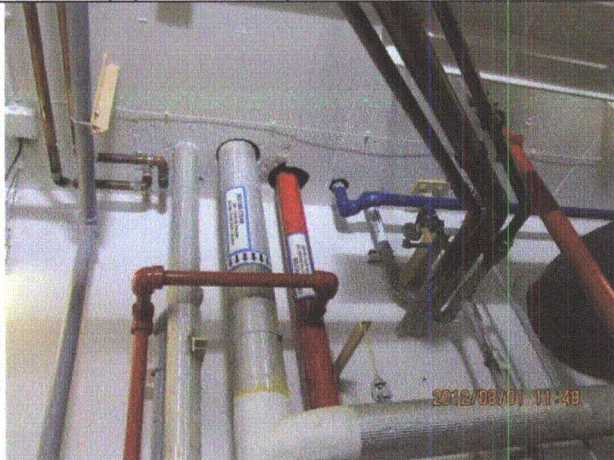
Status: ☒ Y ☐ N ☐ U

Seismic Walkdown Checklist (SWC)

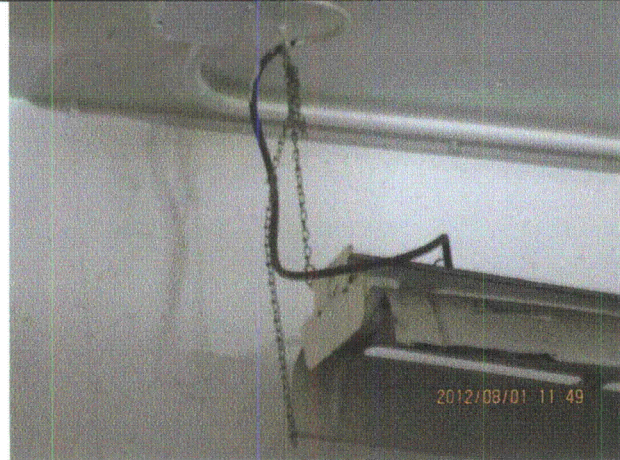
Equipment ID No.: D03-1501-0003AV20

Equipment Class: (8) Motor-Operated and Solenoid-Operated Valves

Equipment Description: CCSW/ Heat Exchanger Outlet Service Water Line Valve



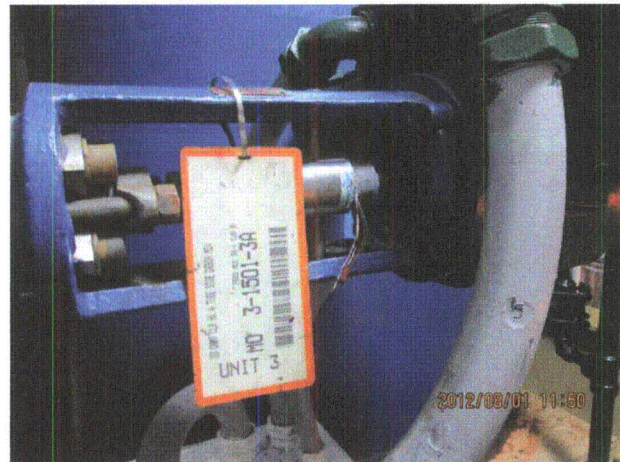
20120801-Dresden-3 231



20120801-Dresden-3 232



20120801-Dresden-3 233



20120801-Dresden-3 234

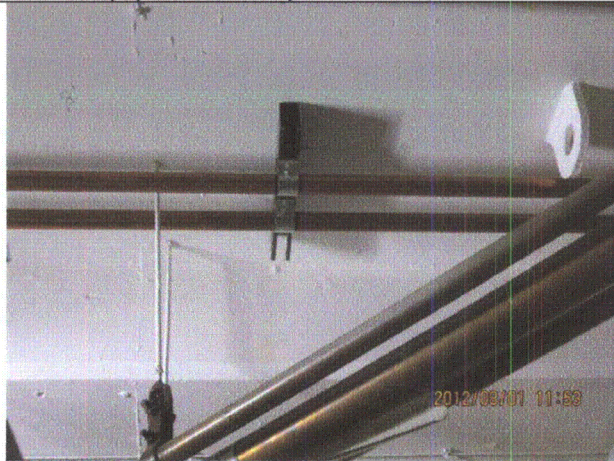
Status: ☒ Y ☐ N ☐ U

Seismic Walkdown Checklist (SWC)

Equipment ID No.: D03-1501-0003AV20

Equipment Class: (8) Motor-Operated and Solenoid-Operated Valves

Equipment Description: CCSW/ Heat Exchanger Outlet Service Water Line Valve



20120801-Dresden-3 235



20120801-Dresden-3 236