

Status: ☒ Y ☐ N ☐ U

**Seismic Walkdown Checklist (SWC)**

Equipment ID No.: D00-ACP

Equipment Class: (20) Instrumentation and Control Panels and Cabinets

Equipment Description: CONTROL PANEL/ Unit 2/3 Auxiliary Control Panel

Project: Dresden 3 SWEL

Location (Bldg, Elev, Room/Area): Reactor, 504.50 ft, ALL

Manufacturer/Model: \_\_\_\_\_

**Instructions for Completing Checklist**

This checklist may be used to document the results of the Seismic Walkdown of an item of equipment on the SWEL. The space below each of the following questions may be used to record the results of judgments and findings. Additional space is provided at the end of this checklist for documenting other comments.

**Anchorage**

- |  |     |
|--|-----|
| 1. Is anchorage configuration verification required (i.e., is the item one of the 50% of SWEL items requiring such verification)?  | Yes |
| 2. Is the anchorage free of bent, broken, missing or loose hardware?   | Yes |
| 3. Is the anchorage free of corrosion that is more than mild surface oxidation?  | Yes |
| 4. Is the anchorage free of visible cracks in the concrete near the anchors?   | Yes |
| 5. Is the anchorage configuration consistent with plant documentation? (Note: This question only applies if the item is one of the 50% for which an anchorage configuration verification is required.) | Yes |
| 6. Based on the above anchorage evaluations, is the anchorage free of potentially adverse seismic conditions?  | Yes |

Status: ☒ Y ☐ N ☐ U

**Seismic Walkdown Checklist (SWC)**

Equipment ID No.: D00-ACP

Equipment Class: (20) Instrumentation and Control Panels and Cabinets

Equipment Description: CONTROL PANEL/ Unit 2/3 Auxiliary Control Panel

**Interaction Effects**

- |   |     |
|---|-----|
| 7. Are soft targets free from impact by nearby equipment or structures?   | Yes |
| 8. Are overhead equipment, distribution systems, ceiling tiles and lighting, and masonry block walls not likely to collapse onto the equipment? | Yes |
| 9. Do attached lines have adequate flexibility to avoid damage?   | Yes |
| 10. Based on the above seismic interaction evaluations, is equipment free of potentially adverse seismic interaction effects?                   | Yes |

---

**Other Adverse Conditions**

- |  |     |
|--|-----|
| 11. Have you looked for and found no adverse seismic conditions that could adversely affect the safety functions of the equipment? | Yes |
|--|-----|

---

**Comments**

SEWS Anchorage Notes:

Column mounted panel. Bolted to column with four 3/8" shell type expansion bolts (one in each corner) through a 1/2" shim plate.

\*\*\*\*\*

Seismic Walkdown Team: J. Griffith & M. Wodarczyk - 7/31/2012

See U2/3 Diesel Generator Room area walk-by notes completed during U2 walkdown for further information.

---



Status: ☒ Y ☐ N ☐ U

### Seismic Walkdown Checklist (SWC)

Equipment ID No.: D00-ACP

Equipment Class: (20) Instrumentation and Control Panels and Cabinets

Equipment Description: CONTROL PANEL/ Unit 2/3 Auxiliary Control Panel

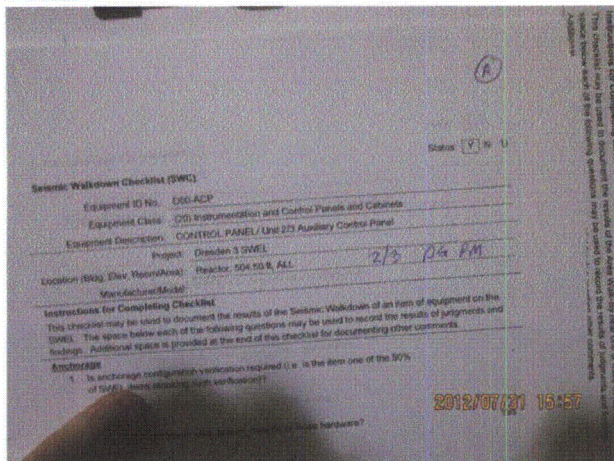
Evaluated by: James D. Griffith James Griffith

Date: 9/30/2012

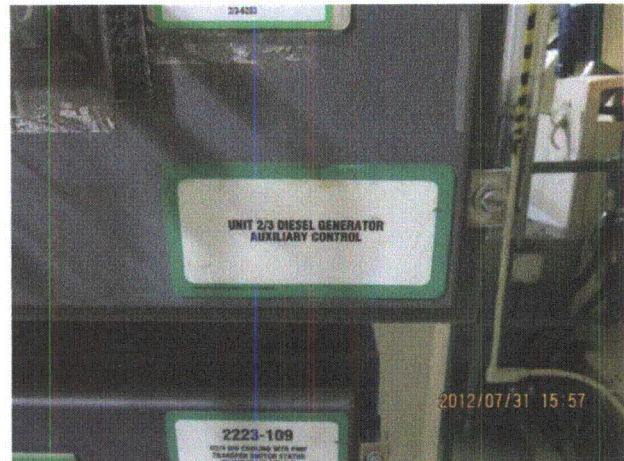
Michael J. Wodarczyk  
Michael Wodarczyk

9/30/2012

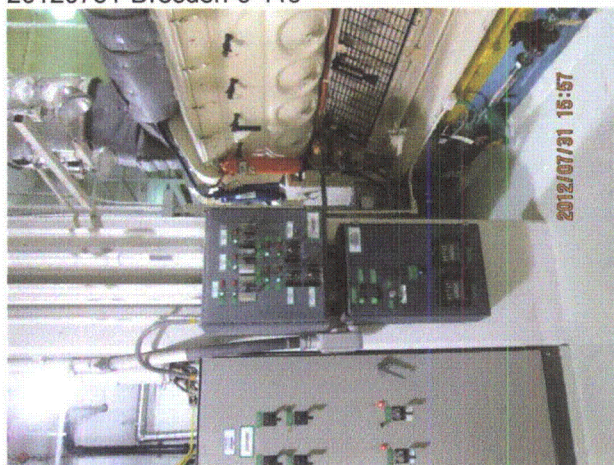
### Photos



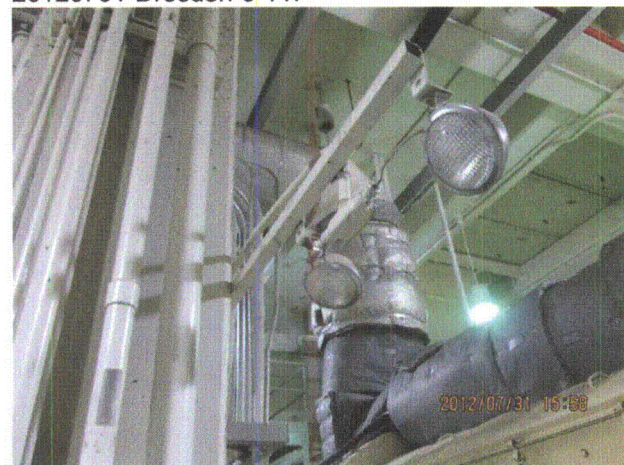
20120731-Dresden-3 446



20120731-Dresden-3 447



20120731-Dresden-3 448



20120731-Dresden-3 449



Status: ☒ Y ☐ N ☐ U

**Seismic Walkdown Checklist (SWC)**

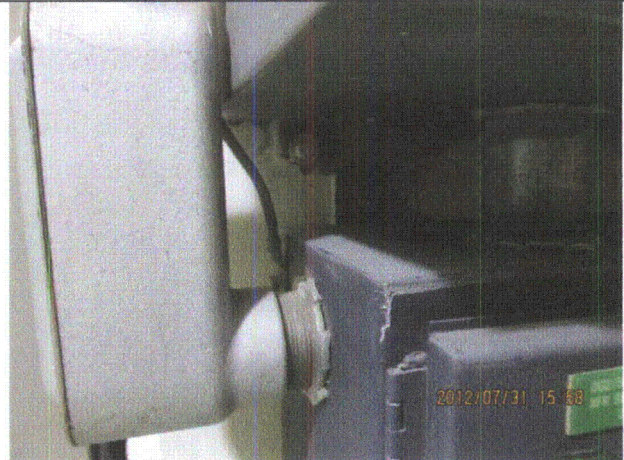
Equipment ID No.: D00-ACP

Equipment Class: (20) Instrumentation and Control Panels and Cabinets

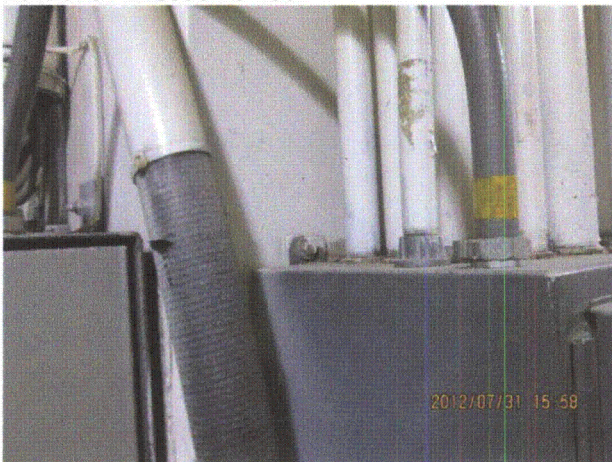
Equipment Description: CONTROL PANEL/ Unit 2/3 Auxiliary Control Panel



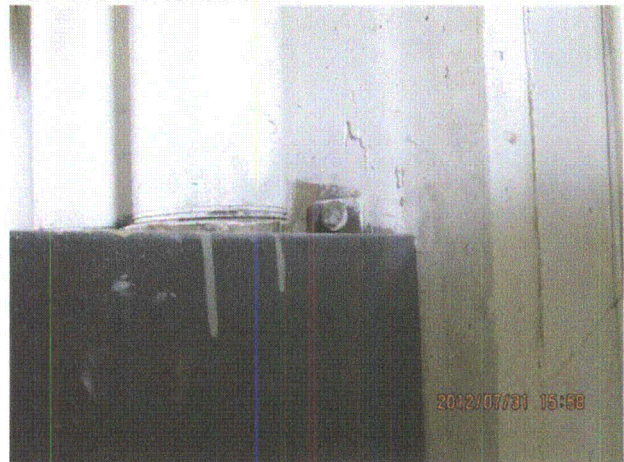
20120731-Dresden-3 450



20120731-Dresden-3 451



20120731-Dresden-3 452



20120731-Dresden-3 453



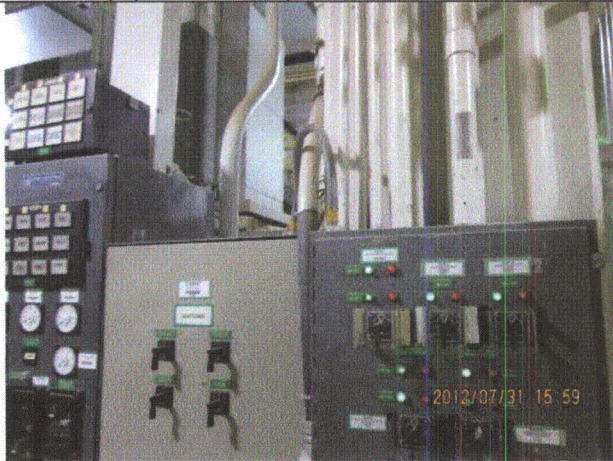
Status: ☒ Y ☐ N ☐ U

**Seismic Walkdown Checklist (SWC)**

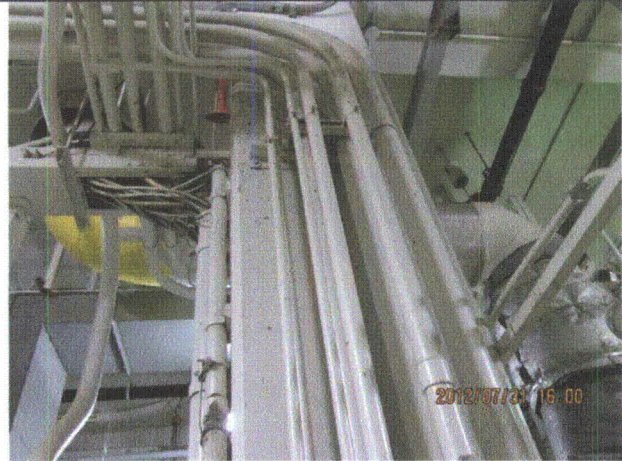
Equipment ID No.: D00-ACP

Equipment Class: (20) Instrumentation and Control Panels and Cabinets

Equipment Description: CONTROL PANEL/ Unit 2/3 Auxiliary Control Panel



20120731-Dresden-3 454



20120731-Dresden-3 455



20120731-Dresden-3 456



20120731-Dresden-3 457

Status: ☒ Y ☐ N ☐ U

### Seismic Walkdown Checklist (SWC)

Equipment ID No.: D00-DGCP

Equipment Class: (20) Instrumentation and Control Panels and Cabinets

Equipment Description: CONTROL PANEL/ Unit 2/3 Diesel Generator Control Panel

Project: Dresden 3 SWEL

Location (Bldg, Elev, Room/Area): Reactor, 504.50 ft, ALL

Manufacturer/Model: \_\_\_\_\_

#### Instructions for Completing Checklist

This checklist may be used to document the results of the Seismic Walkdown of an item of equipment on the SWEL. The space below each of the following questions may be used to record the results of judgments and findings. Additional space is provided at the end of this checklist for documenting other comments.

#### Anchorage

1. Is anchorage configuration verification required (i.e., is the item one of the 50% of SWEL items requiring such verification)? Yes
2. Is the anchorage free of bent, broken, missing or loose hardware? Yes
3. Is the anchorage free of corrosion that is more than mild surface oxidation? Yes
4. Is the anchorage free of visible cracks in the concrete near the anchors? Not Applicable  
*Panel is anchored to Diesel Generator skid.*
5. Is the anchorage configuration consistent with plant documentation? (Note: This question only applies if the item is one of the 50% for which an anchorage configuration verification is required.) Yes
6. Based on the above anchorage evaluations, is the anchorage free of potentially adverse seismic conditions? Yes

Status: ☒ Y ☐ N ☐ U

**Seismic Walkdown Checklist (SWC)**

Equipment ID No.: D00-DGCP

Equipment Class: (20) Instrumentation and Control Panels and Cabinets

Equipment Description: CONTROL PANEL/ Unit 2/3 Diesel Generator Control Panel

**Interaction Effects**

- |     |  |     |
|-----|--|-----|
| 7.  | Are soft targets free from impact by nearby equipment or structures?<br><br><i>Edge of panel door protrudes. Door is adequately latched and judged to be acceptable.</i> | Yes |
| 8.  | Are overhead equipment, distribution systems, ceiling tiles and lighting, and masonry block walls not likely to collapse onto the equipment?                             | Yes |
| 9.  | Do attached lines have adequate flexibility to avoid damage?   | Yes |
| 10. | Based on the above seismic interaction evaluations, is equipment free of potentially adverse seismic interaction effects?  | Yes |

**Other Adverse Conditions**

- |     |   |     |
|-----|---|-----|
| 11. | Have you looked for and found no adverse seismic conditions that could adversely affect the safety functions of the equipment?<br><i>Several tubes and conduits are in close proximity to one another. All are flexible and all have the same driver (Diesel Generator skid). Tubes and conduits are judged acceptable.</i> | Yes |
|-----|---|-----|

**Comments**


SEWS Anchorage Notes:

Panel welded to the base of the skid and braced at the top to the expansion water tank that is supported by the Diesel Skid.

\*\*\*\*\*

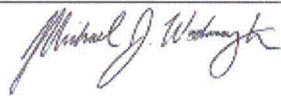
Seismic Walkdown Team: J. Griffith & M. Wodarczyk - 7/31/2012

Evaluated by:



James Griffith

Date: 10/24/2012



Michael Wodarczyk

10/24/2012



Status: ☒ Y ☐ N ☐ U

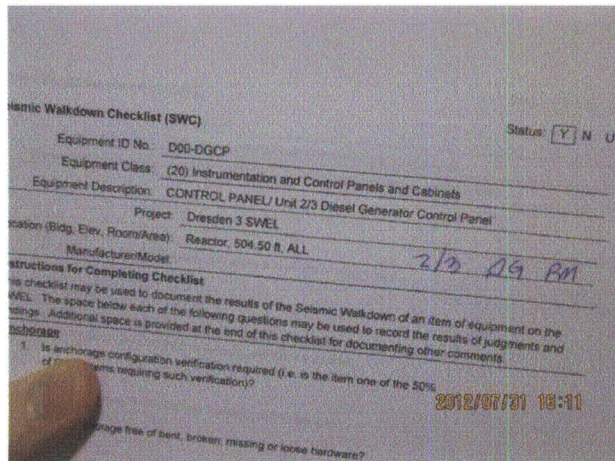
### Seismic Walkdown Checklist (SWC)

Equipment ID No.: D00-DGCP

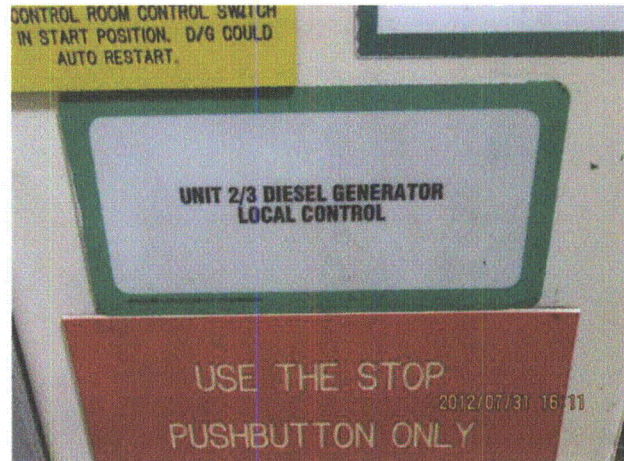
Equipment Class: (20) Instrumentation and Control Panels and Cabinets

Equipment Description: CONTROL PANEL/ Unit 2/3 Diesel Generator Control Panel

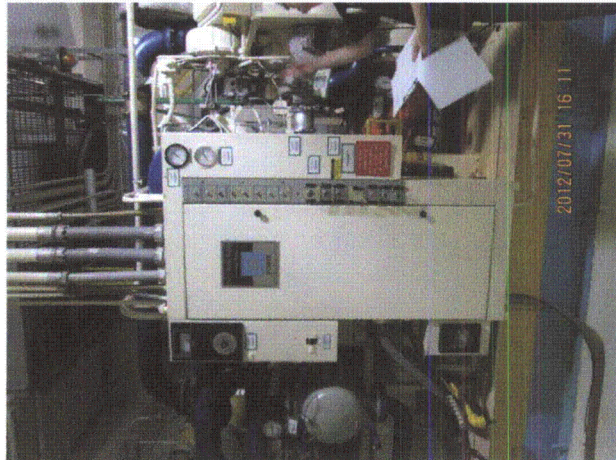
#### Photos



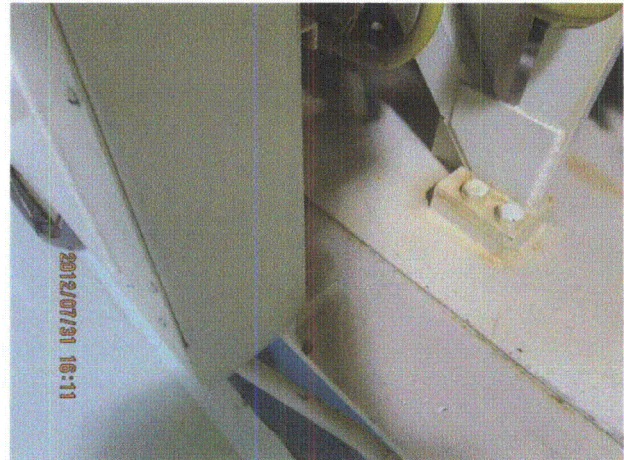
20120731-Dresden-3 471



20120731-Dresden-3 472



20120731-Dresden-3 473



20120731-Dresden-3 474



Status: ☒ Y ☐ N ☐ U

**Seismic Walkdown Checklist (SWC)**

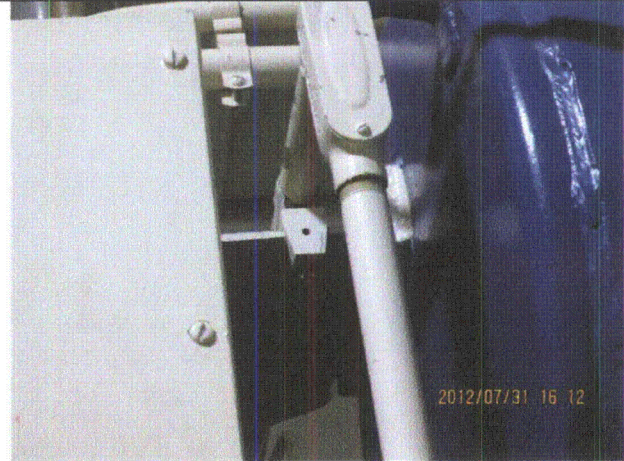
Equipment ID No.: D00-DGCP

Equipment Class: (20) Instrumentation and Control Panels and Cabinets

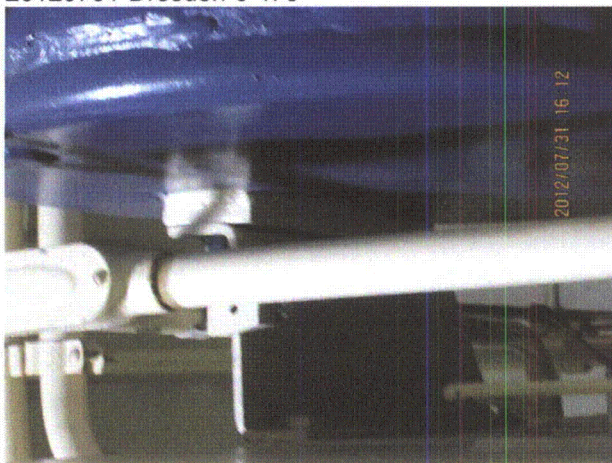
Equipment Description: CONTROL PANEL/ Unit 2/3 Diesel Generator Control Panel



20120731-Dresden-3 475



20120731-Dresden-3 476



20120731-Dresden-3 477



20120731-Dresden-3 478



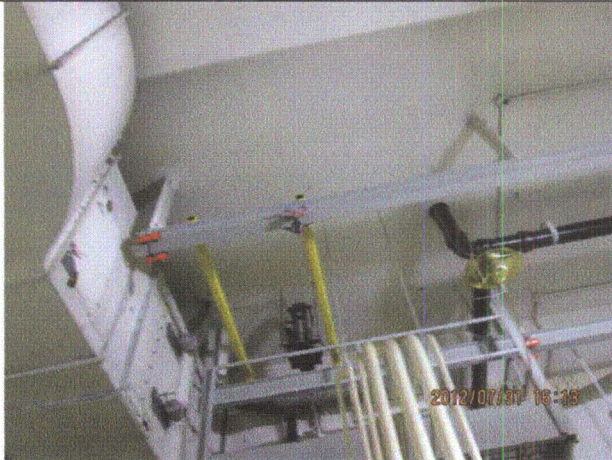
Status: ☒ Y ☐ N ☐ U

**Seismic Walkdown Checklist (SWC)**

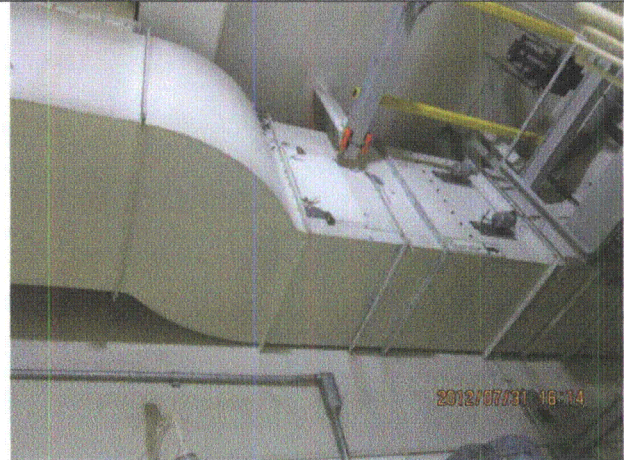
Equipment ID No.: D00-DGCP

Equipment Class: (20) Instrumentation and Control Panels and Cabinets

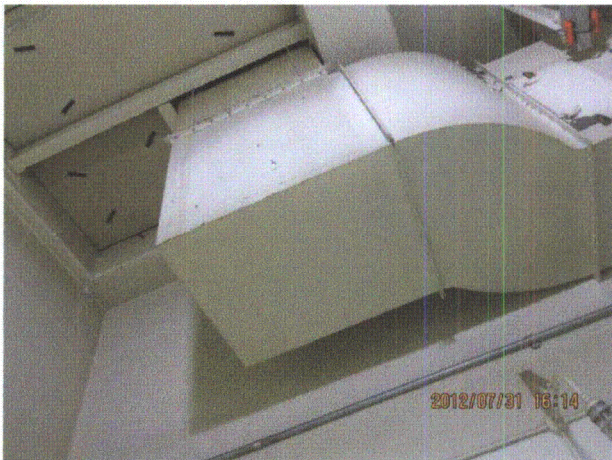
Equipment Description: CONTROL PANEL/ Unit 2/3 Diesel Generator Control Panel



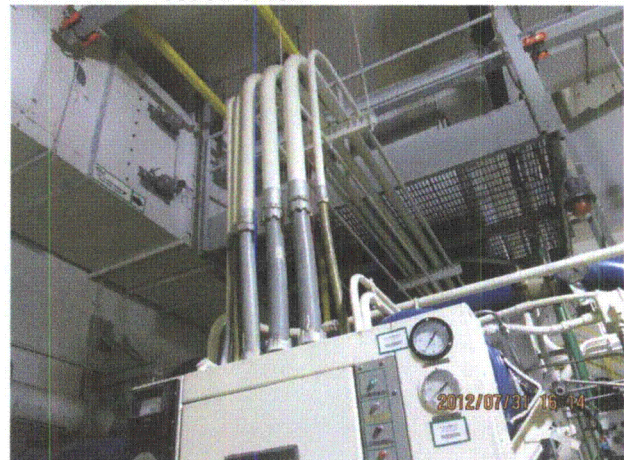
20120731-Dresden-3 480



20120731-Dresden-3 482



20120731-Dresden-3 483



20120731-Dresden-3 484



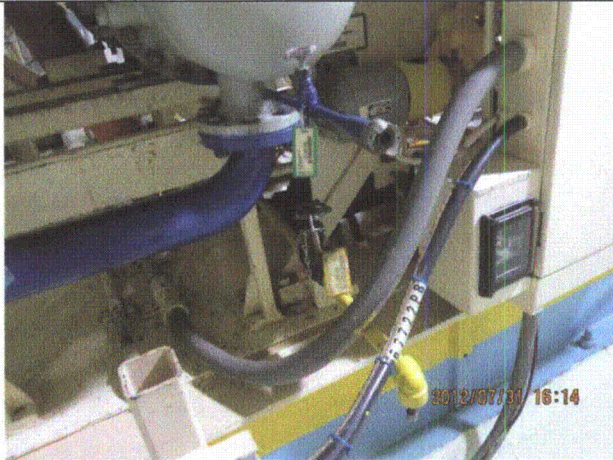
Status: ☒ Y ☐ N ☐ U

**Seismic Walkdown Checklist (SWC)**

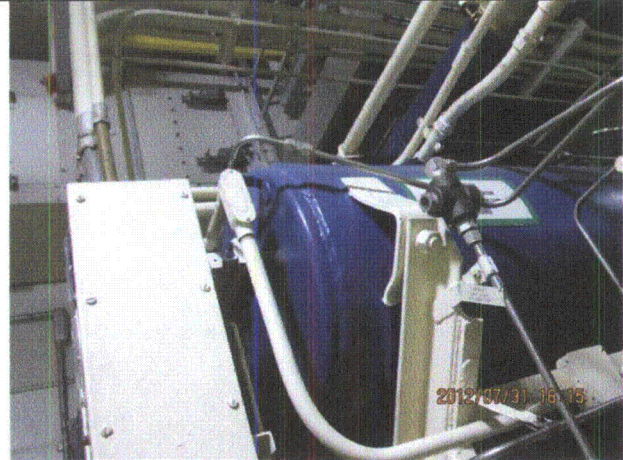
Equipment ID No.: D00-DGCP

Equipment Class: (20) Instrumentation and Control Panels and Cabinets

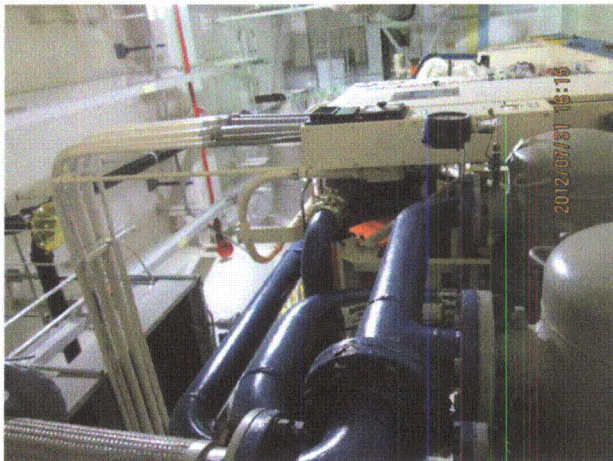
Equipment Description: CONTROL PANEL/ Unit 2/3 Diesel Generator Control Panel



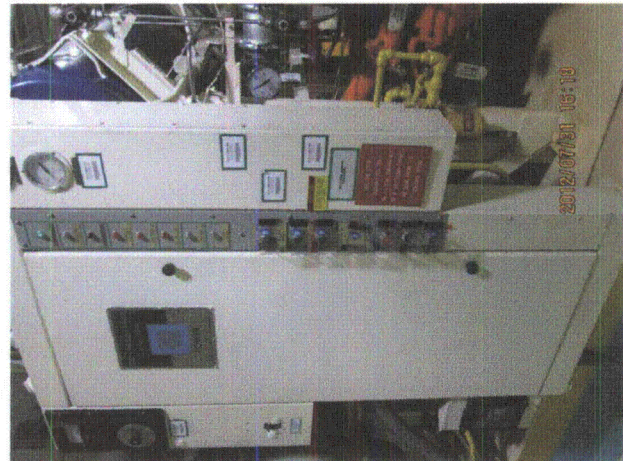
20120731-Dresden-3 485



20120731-Dresden-3 486



20120731-Dresden-3 487



20120731-Dresden-3 488



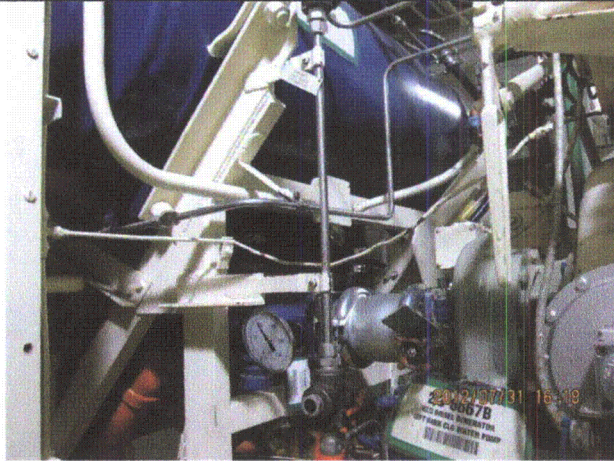
Status: ☒ Y ☐ N ☐ U

**Seismic Walkdown Checklist (SWC)**

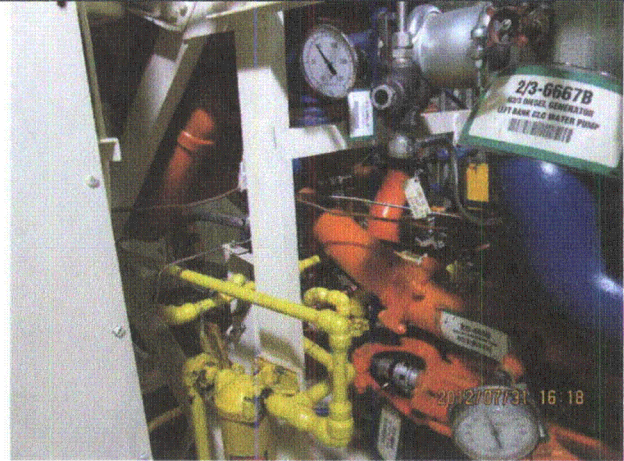
Equipment ID No.: D00-DGCP

Equipment Class: (20) Instrumentation and Control Panels and Cabinets

Equipment Description: CONTROL PANEL/ Unit 2/3 Diesel Generator Control Panel



20120731-Dresden-3 489



20120731-Dresden-3 490



20120731-Dresden-3 491

Status: ☒ Y ☐ N ☐ U

**Seismic Walkdown Checklist (SWC)**

Equipment ID No.: D00-NGC

Equipment Class: (20) Instrumentation and Control Panels and Cabinets

Equipment Description: CONTROL PANEL/ Unit 2/3 Neutral Grounding Cabinet

Project: Dresden 3 SWEL

Location (Bldg, Elev, Room/Area): Reactor, 504.50 ft, ALL

Manufacturer/Model: \_\_\_\_\_

**Instructions for Completing Checklist**

This checklist may be used to document the results of the Seismic Walkdown of an item of equipment on the SWEL. The space below each of the following questions may be used to record the results of judgments and findings. Additional space is provided at the end of this checklist for documenting other comments.

**Anchorage**

- |  |     |
|--|-----|
| 1. Is anchorage configuration verification required (i.e., is the item one of the 50% of SWEL items requiring such verification)?  | Yes |
| 2. Is the anchorage free of bent, broken, missing or loose hardware?   | Yes |
| 3. Is the anchorage free of corrosion that is more than mild surface oxidation?  | Yes |
| 4. Is the anchorage free of visible cracks in the concrete near the anchors?   | Yes |
| 5. Is the anchorage configuration consistent with plant documentation? (Note: This question only applies if the item is one of the 50% for which an anchorage configuration verification is required.) | Yes |
| 6. Based on the above anchorage evaluations, is the anchorage free of potentially adverse seismic conditions?  | Yes |

Status: ☒ Y ☐ N ☐ U

**Seismic Walkdown Checklist (SWC)**

Equipment ID No.: D00-NGC

Equipment Class: (20) Instrumentation and Control Panels and Cabinets

Equipment Description: CONTROL PANEL/ Unit 2/3 Neutral Grounding Cabinet

**Interaction Effects**

7. Are soft targets free from impact by nearby equipment or structures? Yes  
*Cabinet restrained at top to column and Cabinet 2223-33 via 2 clips on each side. Judged to be acceptable.*
8. Are overhead equipment, distribution systems, ceiling tiles and lighting, and masonry block walls not likely to collapse onto the equipment? Yes
9. Do attached lines have adequate flexibility to avoid damage? Yes
10. Based on the above seismic interaction evaluations, is equipment free of potentially adverse seismic interaction effects? Yes

**Other Adverse Conditions**

11. Have you looked for and found no adverse seismic conditions that could adversely affect the safety functions of the equipment? Yes

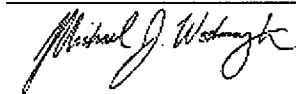
**Comments**

SEWS Anchorage Notes:

Panel is welded to an embed with 3/16" thick fillets (the two in front are 1/2" long and the two in the rear are 3/4" and 1" in length) on in each corner of the panel.

Evaluated by: James D. Griffith James Griffith

Date: 9/30/2012



Michael Wodarczyk

9/30/2012



Status: ☒ Y ☐ N ☐ U

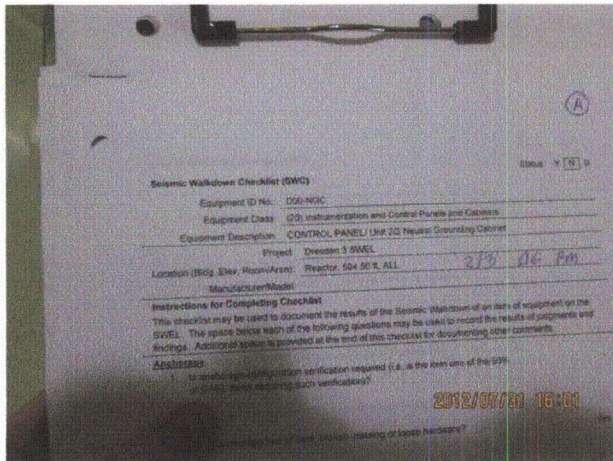
### Seismic Walkdown Checklist (SWC)

Equipment ID No.: D00-NGC

Equipment Class: (20) Instrumentation and Control Panels and Cabinets

Equipment Description: CONTROL PANEL/ Unit 2/3 Neutral Grounding Cabinet

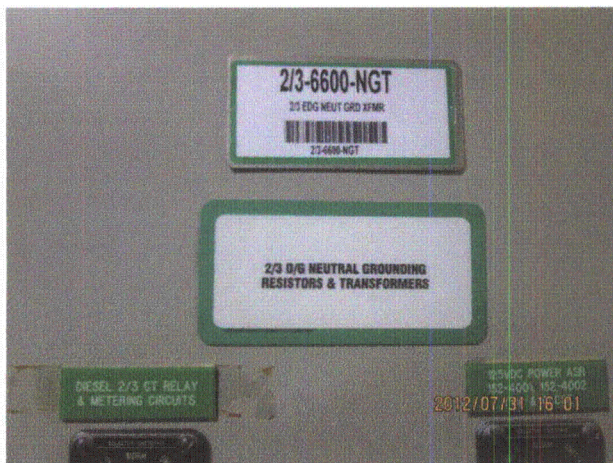
#### Photos



20120731-Dresden-3 458



20120731-Dresden-3 459



20120731-Dresden-3 460



20120731-Dresden-3 461



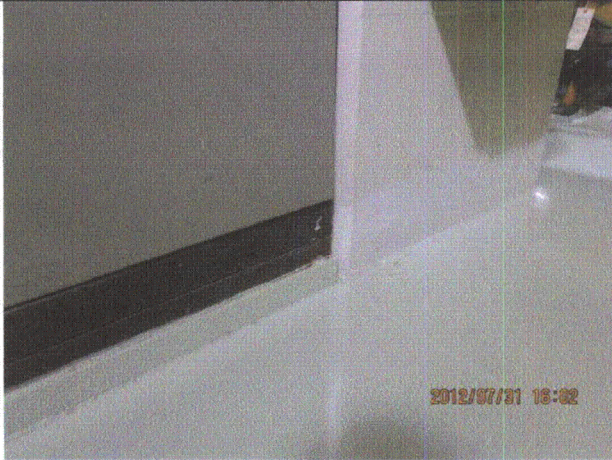
Status: ☒ Y ☐ N ☐ U

**Seismic Walkdown Checklist (SWC)**

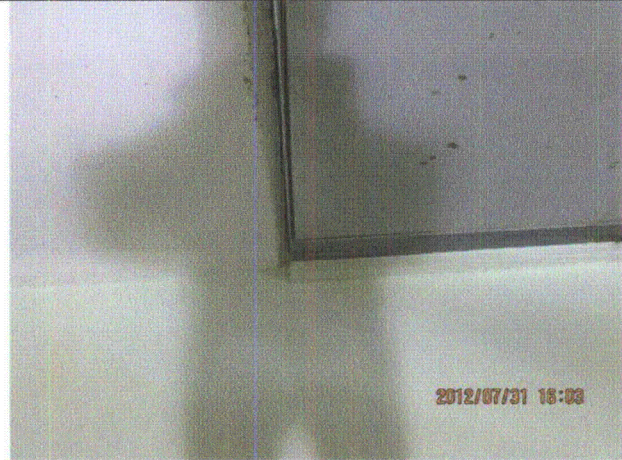
Equipment ID No.: D00-NGC

Equipment Class: (20) Instrumentation and Control Panels and Cabinets

Equipment Description: CONTROL PANEL/ Unit 2/3 Neutral Grounding Cabinet



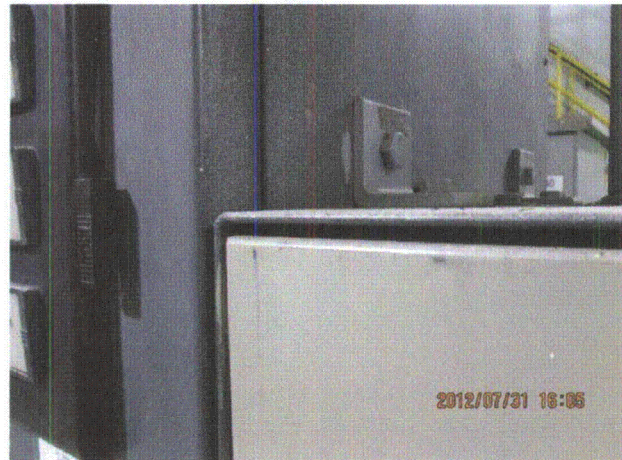
20120731-Dresden-3 462



20120731-Dresden-3 463



20120731-Dresden-3 464



20120731-Dresden-3 465



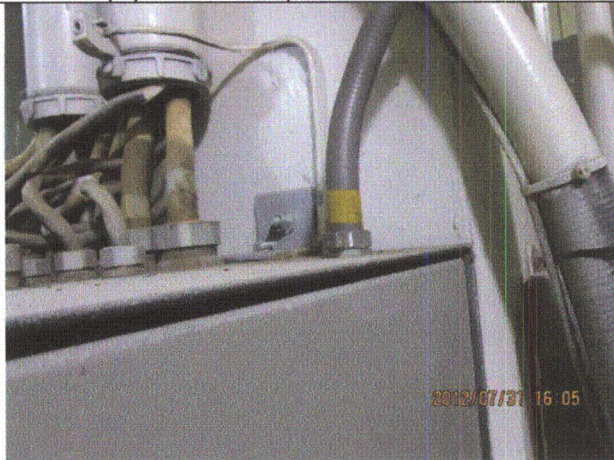
Status: ☒ Y ☐ N ☐ U

**Seismic Walkdown Checklist (SWC)**

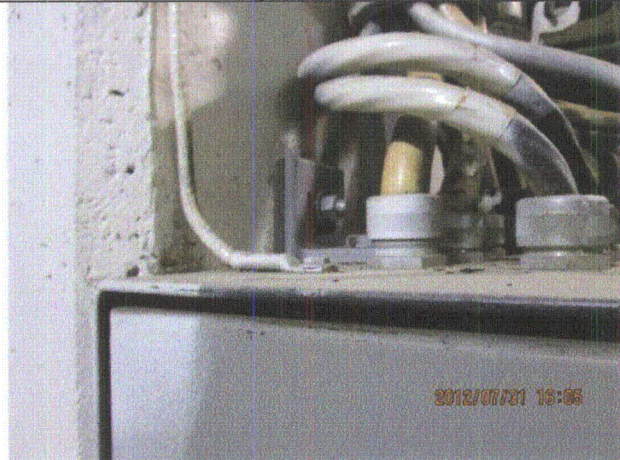
Equipment ID No.: D00-NGC

Equipment Class: (20) Instrumentation and Control Panels and Cabinets

Equipment Description: CONTROL PANEL/ Unit 2/3 Neutral Grounding Cabinet



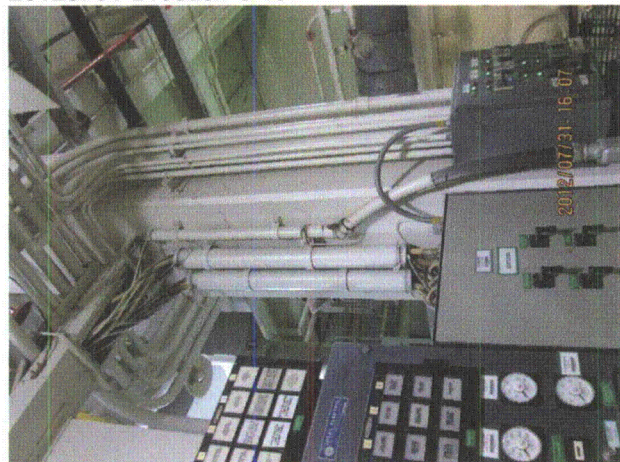
20120731-Dresden-3 466



20120731-Dresden-3 467



20120731-Dresden-3 468



20120731-Dresden-3 469

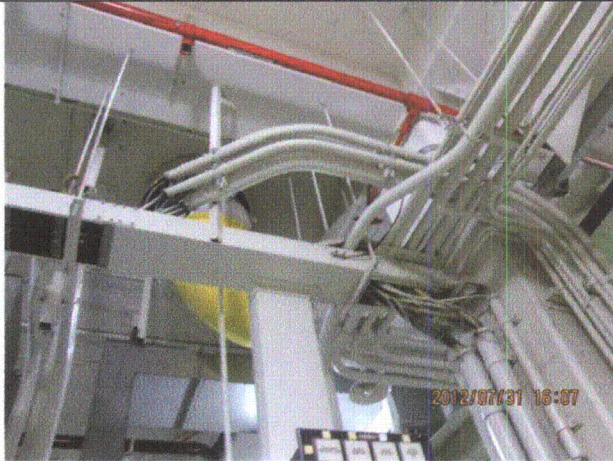
Status: ☒ Y ☐ N ☐ U

**Seismic Walkdown Checklist (SWC)**

Equipment ID No.: D00-NGC

Equipment Class: (20) Instrumentation and Control Panels and Cabinets

Equipment Description: CONTROL PANEL/ Unit 2/3 Neutral Grounding Cabinet



20120731-Dresden-3 470



Status: ☒ Y ☐ N ☐ U

### Seismic Walkdown Checklist (SWC)

Equipment ID No.: D03-0302-0019AV27

Equipment Class: (8) Motor-Operated and Solenoid-Operated Valves

Equipment Description: CRD/ Backup Scram Solenoid Valve

Project: Dresden 3 SWEL

Location (Bldg, Elev, Room/Area): Reactor, 517.50 ft, ALL

Manufacturer/Model: \_\_\_\_\_

#### Instructions for Completing Checklist

This checklist may be used to document the results of the Seismic Walkdown of an item of equipment on the SWEL. The space below each of the following questions may be used to record the results of judgments and findings. Additional space is provided at the end of this checklist for documenting other comments.

#### Anchorage

- |  |                |
|--|----------------|
| 1. Is anchorage configuration verification required (i.e., is the item one of the 50% of SWEL items requiring such verification)?  | No             |
| 2. Is the anchorage free of bent, broken, missing or loose hardware?   | Not Applicable |
| 3. Is the anchorage free of corrosion that is more than mild surface oxidation?  | Not Applicable |
| 4. Is the anchorage free of visible cracks in the concrete near the anchors?   | Not Applicable |
| 5. Is the anchorage configuration consistent with plant documentation? (Note: This question only applies if the item is one of the 50% for which an anchorage configuration verification is required.) | Not Applicable |
| 6. Based on the above anchorage evaluations, is the anchorage free of potentially adverse seismic conditions?  | Yes            |

Status: ☒ Y ☐ N ☐ U

**Seismic Walkdown Checklist (SWC)**

Equipment ID No.: D03-0302-0019AV27

Equipment Class: (8) Motor-Operated and Solenoid-Operated Valves

Equipment Description: CRD/ Backup Scram Solenoid Valve

**Interaction Effects**

- |   |     |
|---|-----|
| 7. Are soft targets free from impact by nearby equipment or structures?   | Yes |
| 8. Are overhead equipment, distribution systems, ceiling tiles and lighting, and masonry block walls not likely to collapse onto the equipment? | Yes |
| 9. Do attached lines have adequate flexibility to avoid damage?   | Yes |
| 10. Based on the above seismic interaction evaluations, is equipment free of potentially adverse seismic interaction effects?                   | Yes |

**Other Adverse Conditions**

- |  |     |
|--|-----|
| 11. Have you looked for and found no adverse seismic conditions that could adversely affect the safety functions of the equipment? | Yes |
|--|-----|

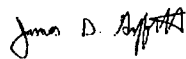
**Comments**

Seismic Walkdown Team: J. Griffith & M. Wodarczyk - 8/1/2012

Missing support clamp on copper pipe near Valve 3-302-20B. Condition judged to be acceptable based on totality of piping system support. See IR 1395804.

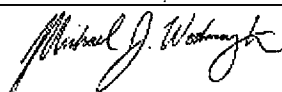
See U3 West HCU Bank area walk-by for further notes.

Evaluated by:



James Griffith

Date: 9/30/2012



Michael Wodarczyk

9/30/2012

Equipment Description: CRD/ Backup Scram Solenoid Valve

1. Equipment ID No. D01-GX07-0118W27  
 Equipment Name On Motion Operator and Balanced-Operated Inverse  
 Equipment Description On to Disc Drive System, Balanced Valve  
 Project Customer's SWELL  
 Location (City, State, Zip, Phone) Passaic 547-63 8141  
 Manufacturer/Model L-400 1000 100  
 Manufacturer/Model SWELL

Instructions for Completing Checklist  
 This checklist may be used to ascertain the results of the Safety Walkdown of an item to be submitted on the SWELL. The space below each of the following checklist may be used to record the results of inspections and testing. Additional notes or provided at the end of the checklist for the submitter for other comments.

a. ☐ Exchange configuration identifier required i.e. in the item one of the SWELL (does not require two configurations)  
 No

b. ☐ Is the percentage loss of vent, broker, meaning or total hardware?  
 Not Applicable

c. ☐ Is the percentage loss of coverage that is more than until until condition?  
 Not Applicable

d. ☐ Is the percentage loss of total coverage?

2012/03/06 00:55

A photograph of a complex industrial piping system, likely a gas distribution or processing unit. The system features numerous pipes, valves, and pressure gauges. A large, prominent valve with a red handle is visible on the right side. The equipment is mounted on a wall or a large structure. A date stamp in the bottom right corner reads '2012/03/01 09:53'.

A photograph of a complex industrial piping system, likely a laboratory or industrial process setup. The system features numerous pipes, valves, gauges, and flow meters. Many components are labeled with yellow and white tags. A timestamp in the bottom right corner indicates the photo was taken on 2012/06/01 at 09:55.

20120801-Dresden-3 162



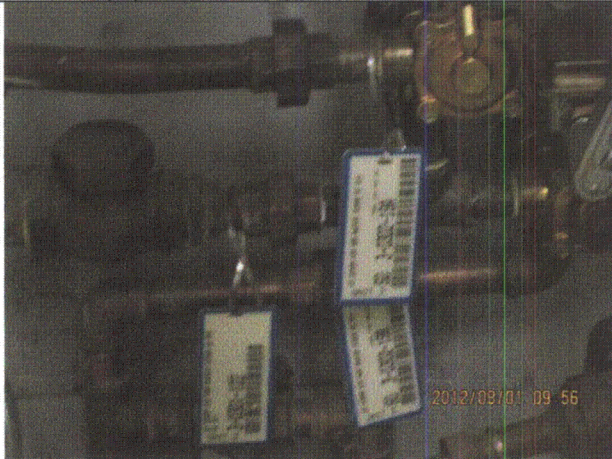
Status: ☒ Y ☐ N ☐ U

**Seismic Walkdown Checklist (SWC)**

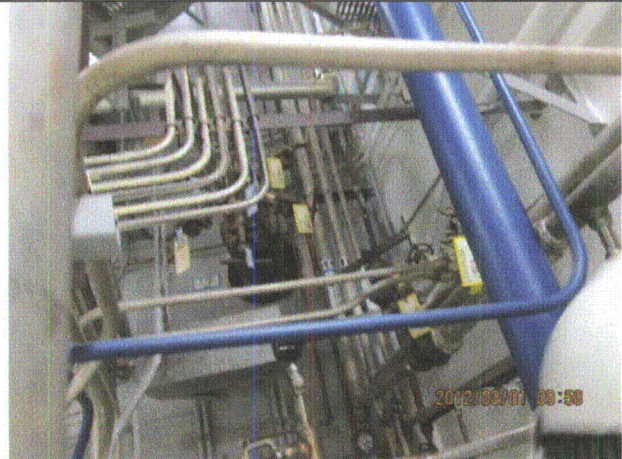
Equipment ID No.: D03-0302-0019AV27

Equipment Class: (8) Motor-Operated and Solenoid-Operated Valves

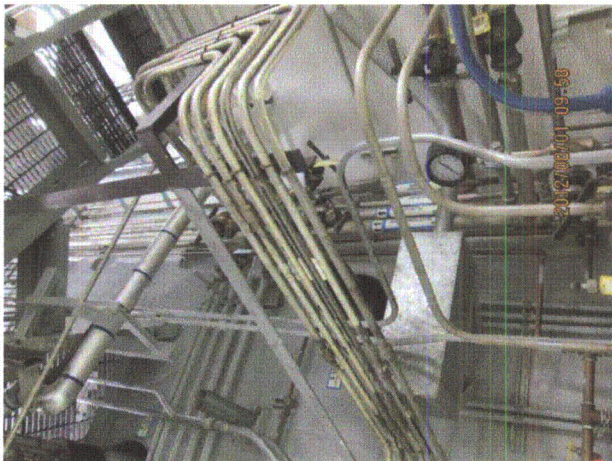
Equipment Description: CRD/ Backup Scram Solenoid Valve



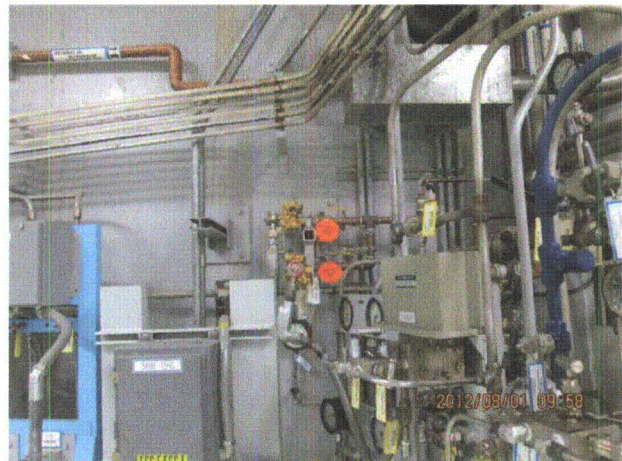
20120801-Dresden-3 163



20120801-Dresden-3 164



20120801-Dresden-3 165



20120801-Dresden-3 166



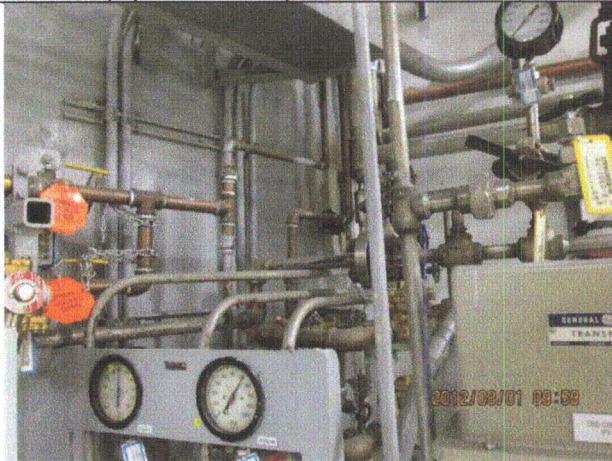
Status: ☒ Y ☐ N ☐ U

**Seismic Walkdown Checklist (SWC)**

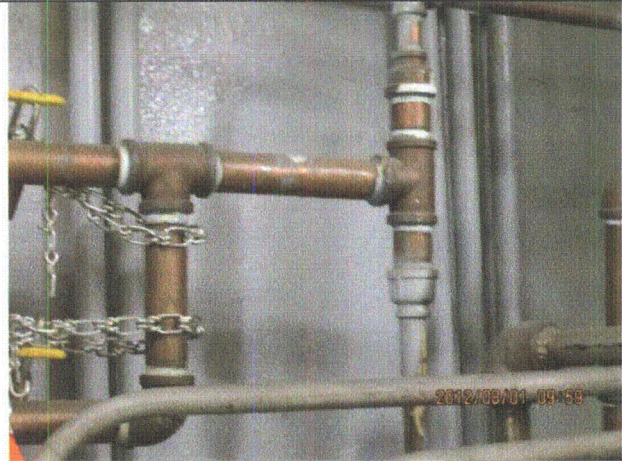
Equipment ID No.: D03-0302-0019AV27

Equipment Class: (8) Motor-Operated and Solenoid-Operated Valves

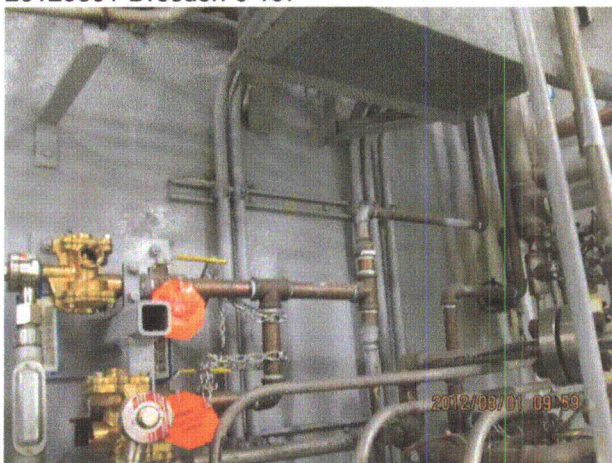
Equipment Description: CRD/ Backup Scram Solenoid Valve



20120801-Dresden-3 167



20120801-Dresden-3 168



20120801-Dresden-3 169



20120801-Dresden-3 170



Status: ☒ Y ☐ N ☐ U

**Seismic Walkdown Checklist (SWC)**

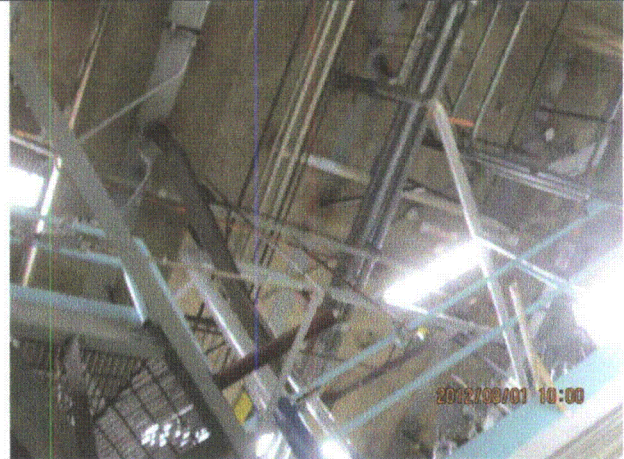
Equipment ID No.: D03-0302-0019AV27

Equipment Class: (8) Motor-Operated and Solenoid-Operated Valves

Equipment Description: CRD/ Backup Scram Solenoid Valve



20120801-Dresden-3 171



20120801-Dresden-3 172



20120801-Dresden-3 173



20120801-Dresden-3 174



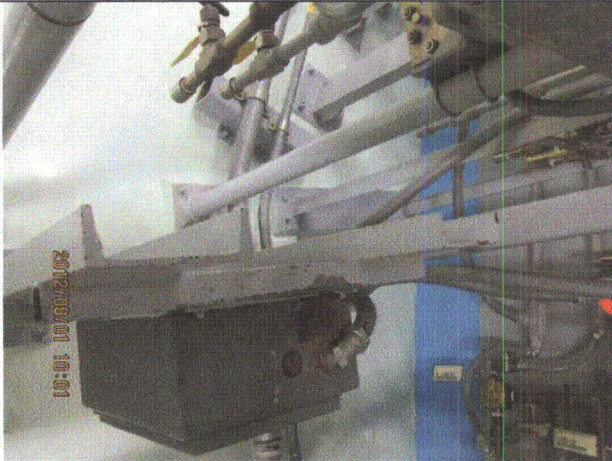
Status: ☒ Y ☐ N ☐ U

**Seismic Walkdown Checklist (SWC)**

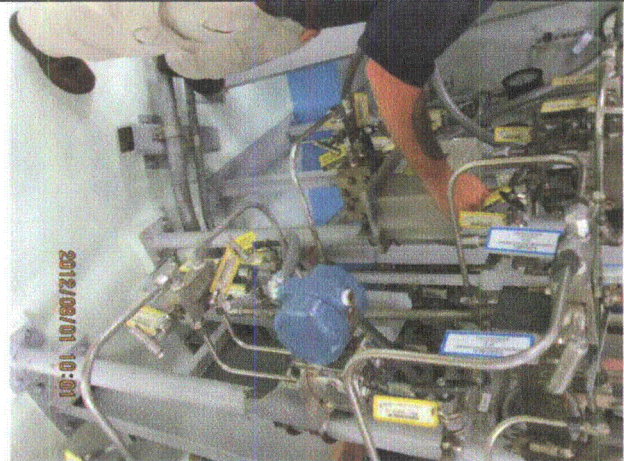
Equipment ID No.: D03-0302-0019AV27

Equipment Class: (8) Motor-Operated and Solenoid-Operated Valves

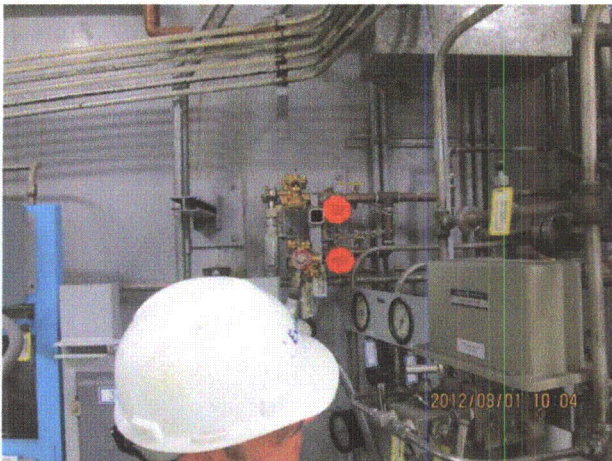
Equipment Description: CRD/ Backup Scram Solenoid Valve



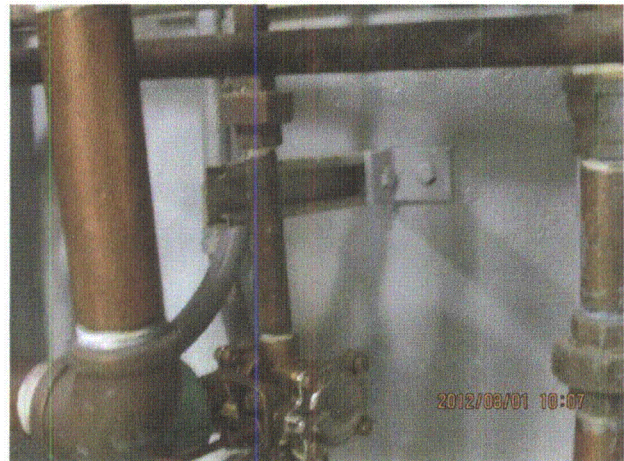
20120801-Dresden-3 175



20120801-Dresden-3 176



20120801-Dresden-3 177



20120801-Dresden-3 178



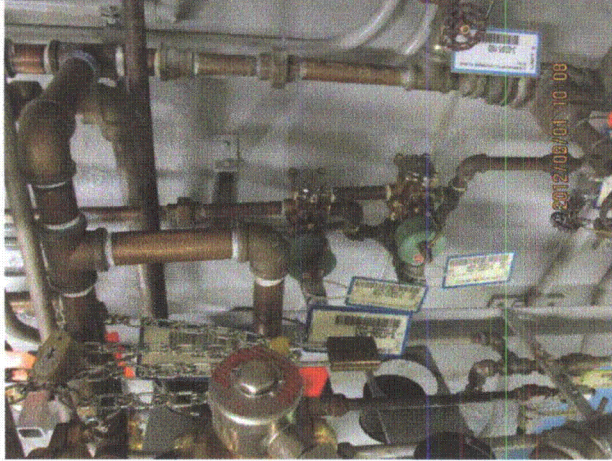
Status: ☒ Y ☐ N ☐ U

**Seismic Walkdown Checklist (SWC)**

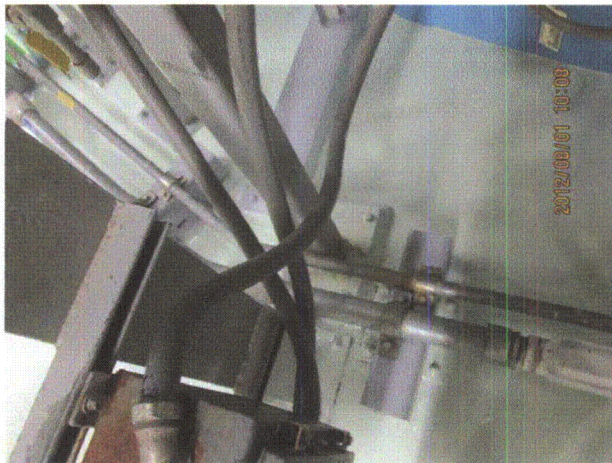
Equipment ID No.: D03-0302-0019AV27

Equipment Class: (8) Motor-Operated and Solenoid-Operated Valves

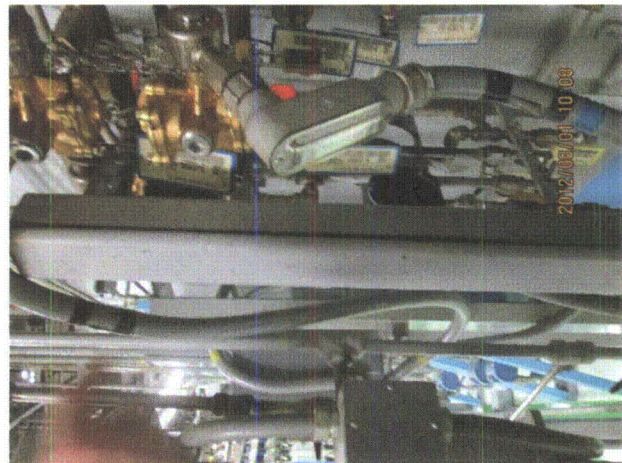
Equipment Description: CRD/ Backup Scram Solenoid Valve



20120801-Dresden-3 179



20120801-Dresden-3 181



20120801-Dresden-3 182



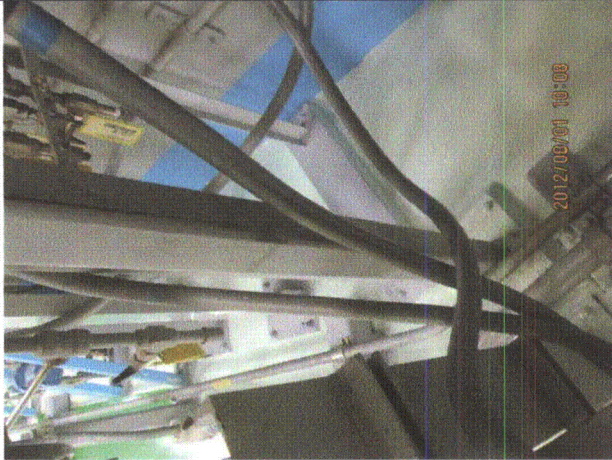
Status: ☒ Y ☐ N ☐ U

**Seismic Walkdown Checklist (SWC)**

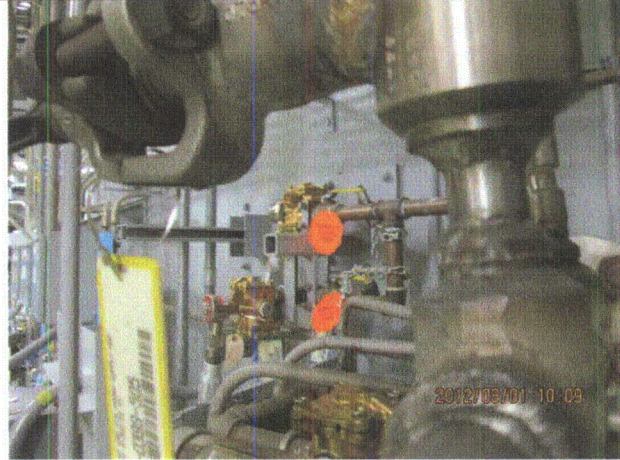
Equipment ID No.: D03-0302-0019AV27

Equipment Class: (8) Motor-Operated and Solenoid-Operated Valves

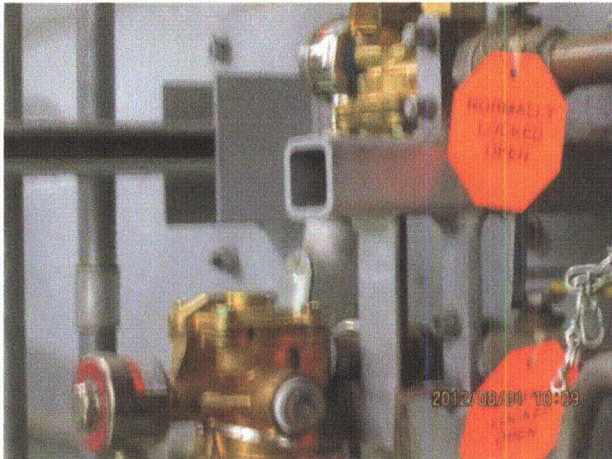
Equipment Description: CRD/ Backup Scram Solenoid Valve



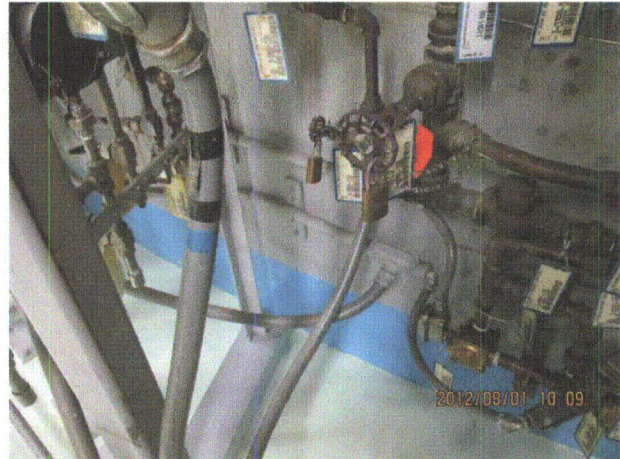
20120801-Dresden-3 183



20120801-Dresden-3 184



20120801-Dresden-3 185



20120801-Dresden-3 186



Status: ☒ Y ☐ N ☐ U

**Seismic Walkdown Checklist (SWC)**

Equipment ID No.: D03-0302-0019AV27

Equipment Class: (8) Motor-Operated and Solenoid-Operated Valves

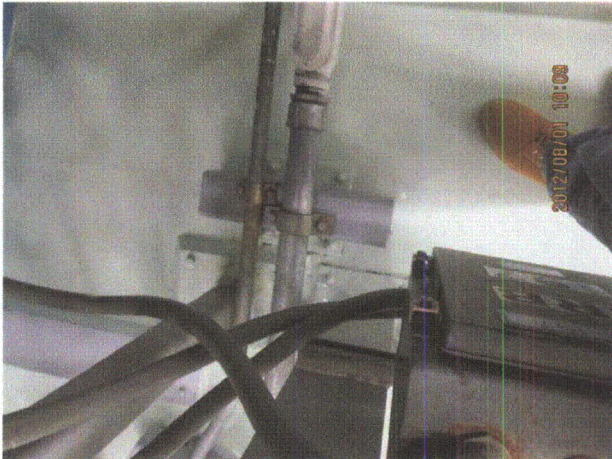
Equipment Description: CRD/ Backup Scram Solenoid Valve



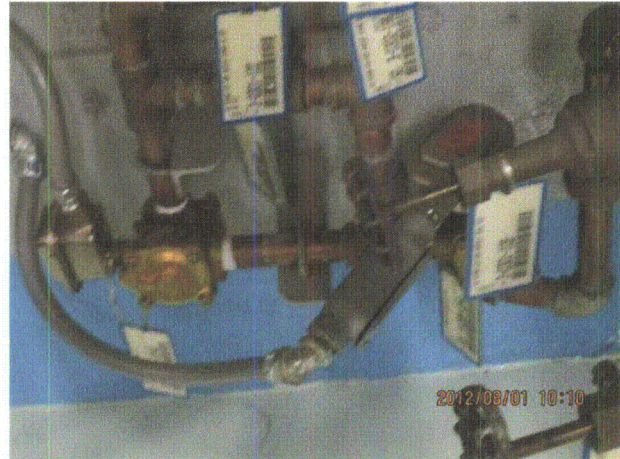
20120801-Dresden-3 187



20120801-Dresden-3 188



20120801-Dresden-3 189



20120801-Dresden-3 190



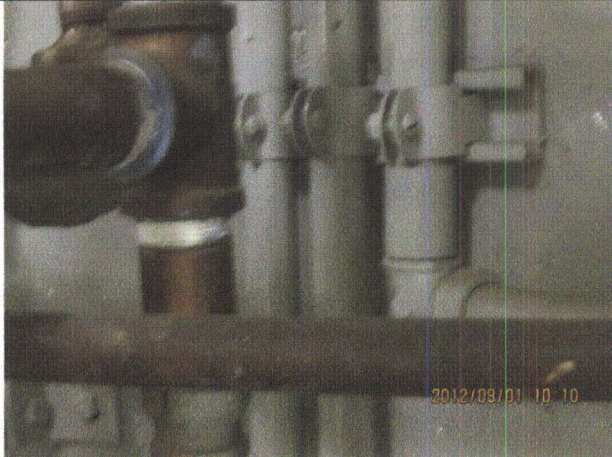
Status: ☒ Y ☐ N ☐ U

**Seismic Walkdown Checklist (SWC)**

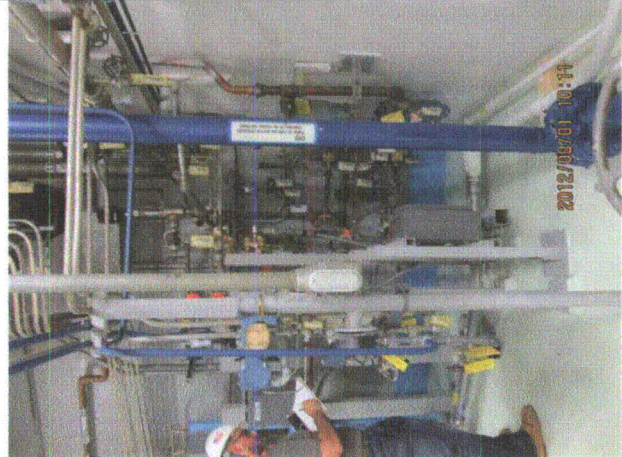
Equipment ID No.: D03-0302-0019AV27

Equipment Class: (8) Motor-Operated and Solenoid-Operated Valves

Equipment Description: CRD/ Backup Scram Solenoid Valve



20120801-Dresden-3 191



20120801-Dresden-3 192



20120801-Dresden-3 193

Status: ☒ Y ☐ N ☐ U

### Seismic Walkdown Checklist (SWC)

Equipment ID No.: D03-0302-0082B-LT

Equipment Class: (18) Instruments on Racks

Equipment Description: CRD/ East Bank SDV Tank Level Transmitter

Project: Dresden 3 SWEL

Location (Bldg, Elev, Room/Area): Reactor, 517.50 ft, ALL

Manufacturer/Model: \_\_\_\_\_

#### Instructions for Completing Checklist

This checklist may be used to document the results of the Seismic Walkdown of an item of equipment on the SWEL. The space below each of the following questions may be used to record the results of judgments and findings. Additional space is provided at the end of this checklist for documenting other comments.

#### Anchorage

1. Is anchorage configuration verification required (i.e., is the item one of the 50% of SWEL items requiring such verification)? No
  
2. Is the anchorage free of bent, broken, missing or loose hardware? Yes
  
3. Is the anchorage free of corrosion that is more than mild surface oxidation? Yes
  
4. Is the anchorage free of visible cracks in the concrete near the anchors? Yes  
*Minor shrinkage cracks in wall judged to be acceptable.*
  
5. Is the anchorage configuration consistent with plant documentation? (Note: This question only applies if the item is one of the 50% for which an anchorage configuration verification is required.) Not Applicable
  
6. Based on the above anchorage evaluations, is the anchorage free of potentially adverse seismic conditions? Yes

Status: ☒ Y ☐ N ☐ U

**Seismic Walkdown Checklist (SWC)**

Equipment ID No.: D03-0302-0082B-LT

Equipment Class: (18) Instruments on Racks

Equipment Description: CRD/ East Bank SDV Tank Level Transmitter

**Interaction Effects**

- |   |     |
|---|-----|
| 7. Are soft targets free from impact by nearby equipment or structures?   | Yes |
| 8. Are overhead equipment, distribution systems, ceiling tiles and lighting, and masonry block walls not likely to collapse onto the equipment? | Yes |
| 9. Do attached lines have adequate flexibility to avoid damage?   | Yes |
| 10. Based on the above seismic interaction evaluations, is equipment free of potentially adverse seismic interaction effects?                   | Yes |

**Other Adverse Conditions**

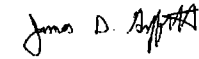
- |  |     |
|--|-----|
| 11. Have you looked for and found no adverse seismic conditions that could adversely affect the safety functions of the equipment? | Yes |
|--|-----|

**Comments**

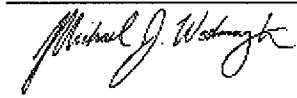
Seismic Walkdown Team: J. Griffith & M. Wodarczyk - 8/1/2012

See U3 East HCU Bank area walk-by for further notes.

Evaluated by:

 James Griffith

Date: 9/30/2012

 Michael Wodarczyk

9/30/2012



Status: ☒ Y ☐ N ☐ U

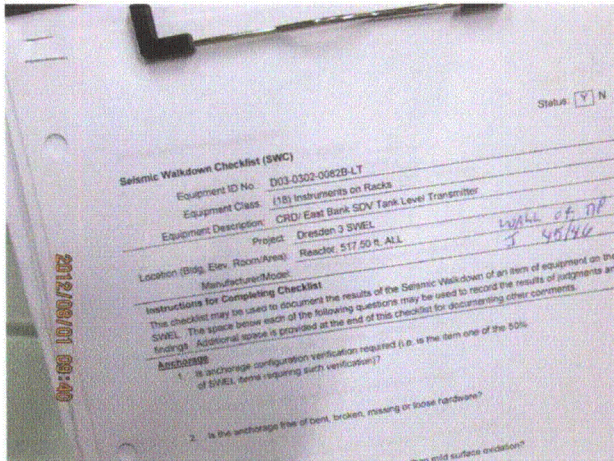
### Seismic Walkdown Checklist (SWC)

Equipment ID No.: D03-0302-0082B-LT

Equipment Class: (18) Instruments on Racks

Equipment Description: CRD/ East Bank SDV Tank Level Transmitter

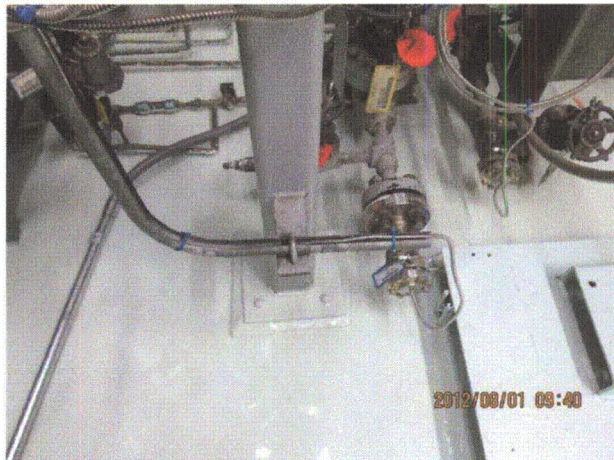
#### Photos



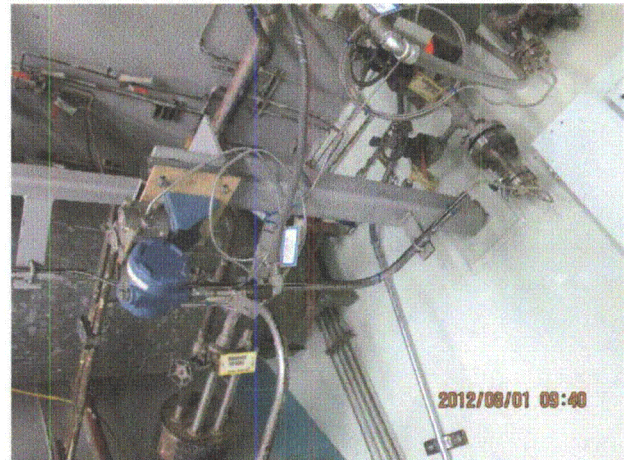
20120801-Dresden-3 127



20120801-Dresden-3 128



20120801-Dresden-3 129



20120801-Dresden-3 130



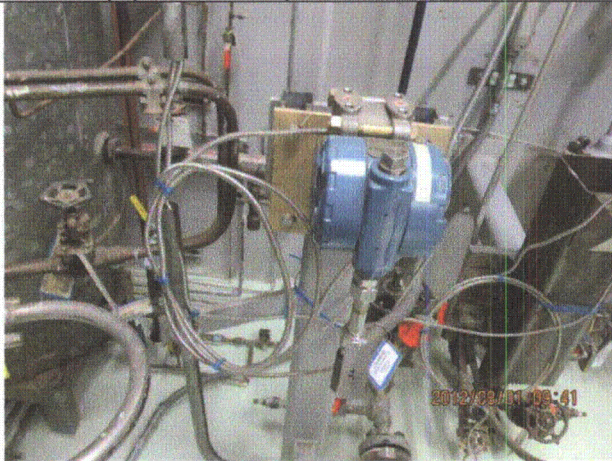
Status: ☒ Y ☐ N ☐ U

**Seismic Walkdown Checklist (SWC)**

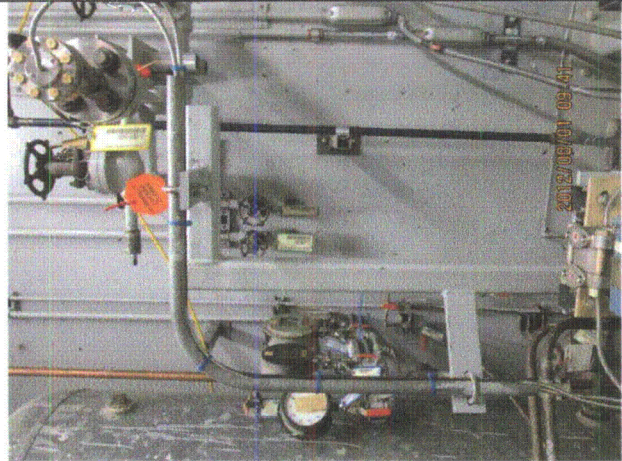
Equipment ID No.: D03-0302-0082B-LT

Equipment Class: (18) Instruments on Racks

Equipment Description: CRD/ East Bank SDV Tank Level Transmitter



20120801-Dresden-3 131



20120801-Dresden-3 132



20120801-Dresden-3 133



20120801-Dresden-3 134



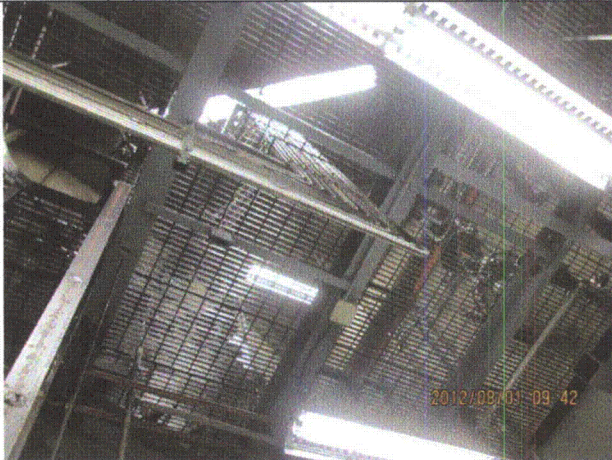
Status: ☒ Y ☐ N ☐ U

**Seismic Walkdown Checklist (SWC)**

Equipment ID No.: D03-0302-0082B-LT

Equipment Class: (18) Instruments on Racks

Equipment Description: CRD/ East Bank SDV Tank Level Transmitter



20120801-Dresden-3 135



20120801-Dresden-3 136



20120801-Dresden-3 137



20120801-Dresden-3 138



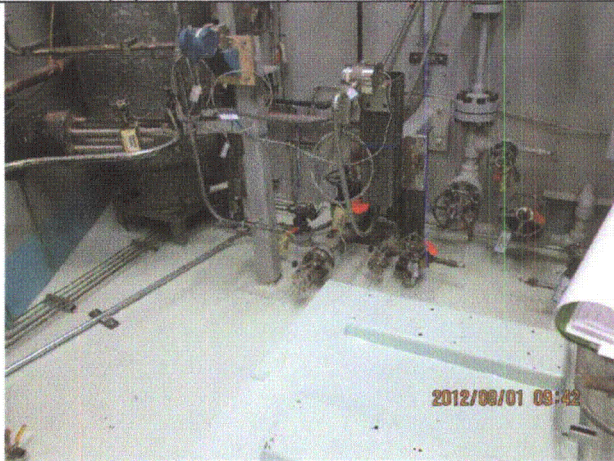
Status: ☒ Y ☐ N ☐ U

**Seismic Walkdown Checklist (SWC)**

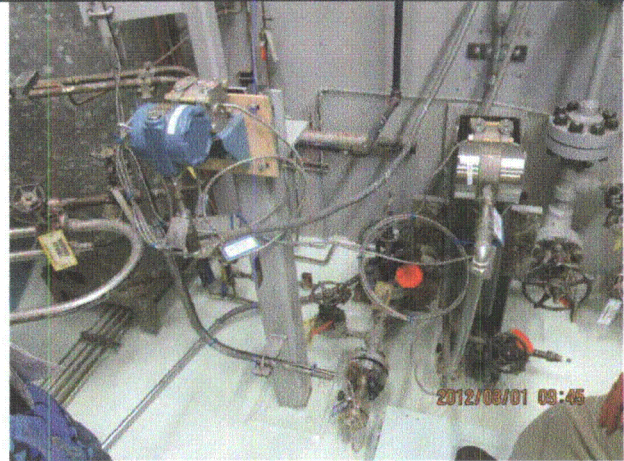
Equipment ID No.: D03-0302-0082B-LT

Equipment Class: (18) Instruments on Racks

Equipment Description: CRD/ East Bank SDV Tank Level Transmitter



20120801-Dresden-3 139



20120801-Dresden-3 140

Status: ☒ Y ☐ N ☐ U

### Seismic Walkdown Checklist (SWC)

Equipment ID No.: D03-0302-0082E-LT

Equipment Class: (18) Instruments on Racks

Equipment Description: CRD/ East Bank SDV Tank Level Transmitter

Project: Dresden 3 SWEL

Location (Bldg, Elev, Room/Area): Reactor, 517.50 ft, ALL

Manufacturer/Model:

#### Instructions for Completing Checklist

This checklist may be used to document the results of the Seismic Walkdown of an item of equipment on the SWEL. The space below each of the following questions may be used to record the results of judgments and findings. Additional space is provided at the end of this checklist for documenting other comments.

#### Anchorage

1. Is anchorage configuration verification required (i.e., is the item one of the 50% of SWEL items requiring such verification)? No
2. Is the anchorage free of bent, broken, missing or loose hardware? Yes
3. Is the anchorage free of corrosion that is more than mild surface oxidation? Yes
4. Is the anchorage free of visible cracks in the concrete near the anchors? Yes  
*Minor shrinkage cracks in wall judged to be acceptable.*
5. Is the anchorage configuration consistent with plant documentation? (Note: This question only applies if the item is one of the 50% for which an anchorage configuration verification is required.) Not Applicable
6. Based on the above anchorage evaluations, is the anchorage free of potentially adverse seismic conditions? Yes



Status: ☒ Y ☐ N ☐ U

**Seismic Walkdown Checklist (SWC)**

Equipment ID No.: D03-0302-0082E-LT

Equipment Class: (18) Instruments on Racks

Equipment Description: CRD/ East Bank SDV Tank Level Transmitter

**Interaction Effects**

7. Are soft targets free from impact by nearby equipment or structures? Yes
8. Are overhead equipment, distribution systems, ceiling tiles and lighting, and masonry block walls not likely to collapse onto the equipment? Yes
9. Do attached lines have adequate flexibility to avoid damage? Yes
10. Based on the above seismic interaction evaluations, is equipment free of potentially adverse seismic interaction effects? Yes

**Other Adverse Conditions**

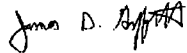
11. Have you looked for and found no adverse seismic conditions that could adversely affect the safety functions of the equipment? Yes

**Comments**

Seismic Walkdown Team: J. Griffith & M. Wodarczyk - 8/1/2012

See U3 East HCU Bank area walk-by for further notes.

Evaluated by:



James Griffith

Date: 9/30/2012



Michael Wodarczyk

9/30/2012

Status: ☒ Y ☐ N ☐ U

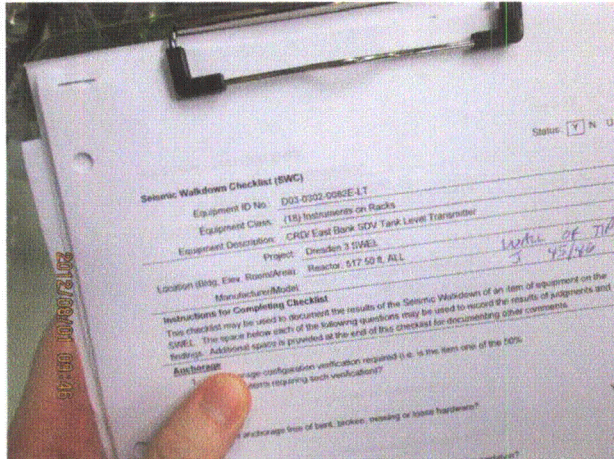
### Seismic Walkdown Checklist (SWC)

Equipment ID No.: D03-0302-0082E-LT

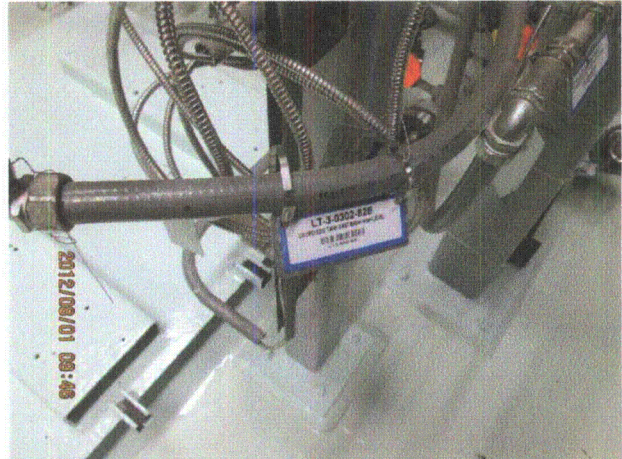
Equipment Class: (18) Instruments on Racks

Equipment Description: CRD/ East Bank SDV Tank Level Transmitter

#### Photos



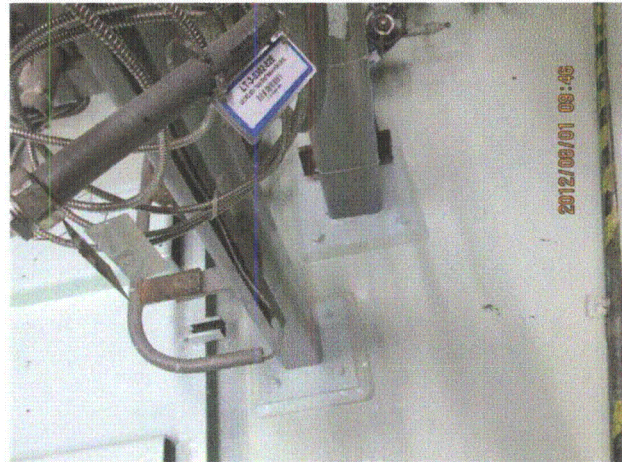
20120801-Dresden-3 141



20120801-Dresden-3 142



20120801-Dresden-3 143



20120801-Dresden-3 144



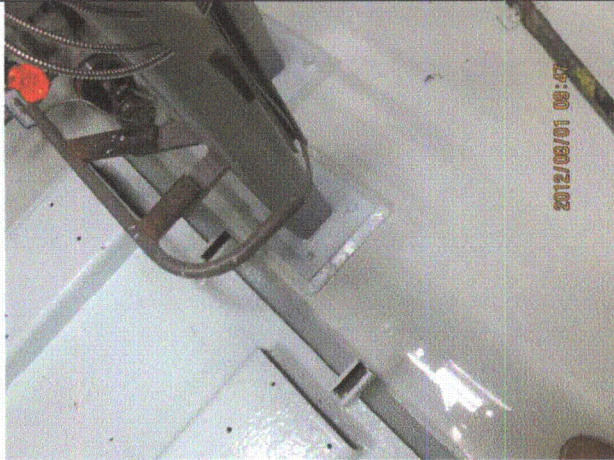
Status: ☒ Y ☐ N ☐ U

**Seismic Walkdown Checklist (SWC)**

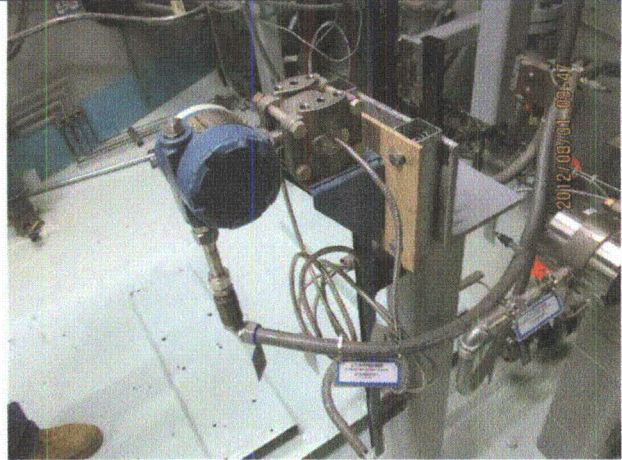
Equipment ID No.: D03-0302-0082E-LT

Equipment Class: (18) Instruments on Racks

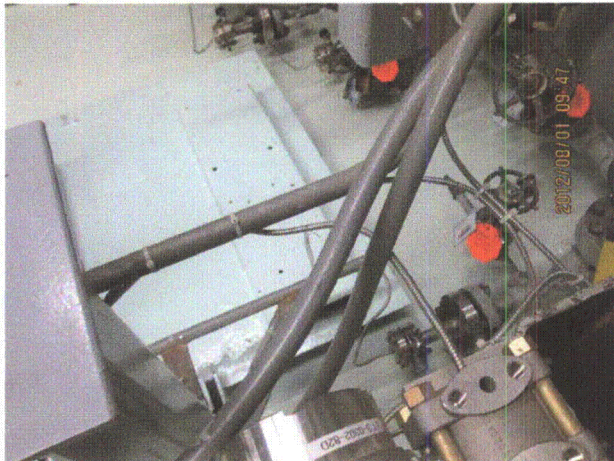
Equipment Description: CRD/ East Bank SDV Tank Level Transmitter



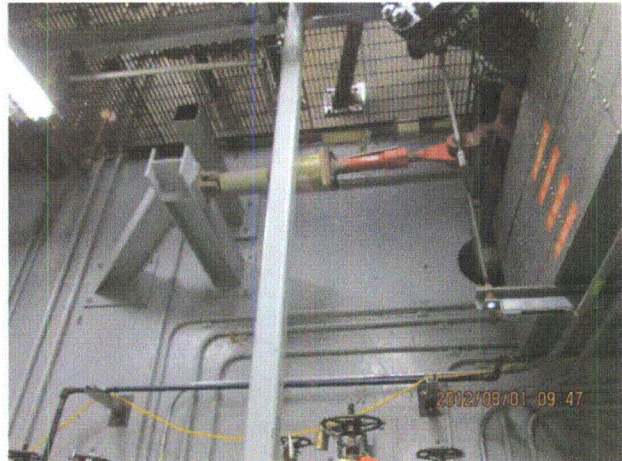
20120801-Dresden-3 145



20120801-Dresden-3 146



20120801-Dresden-3 147



20120801-Dresden-3 148



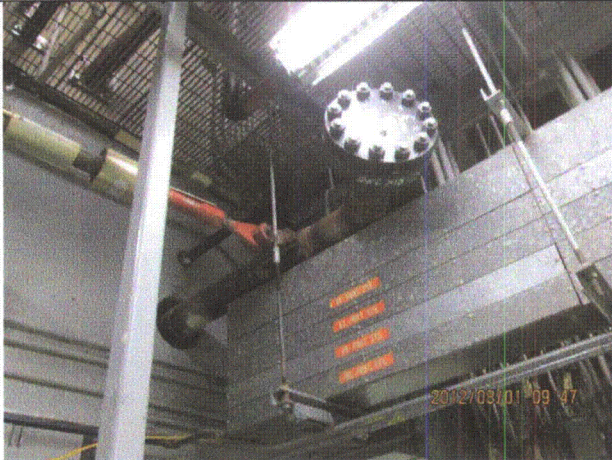
Status: ☒ Y ☐ N ☐ U

**Seismic Walkdown Checklist (SWC)**

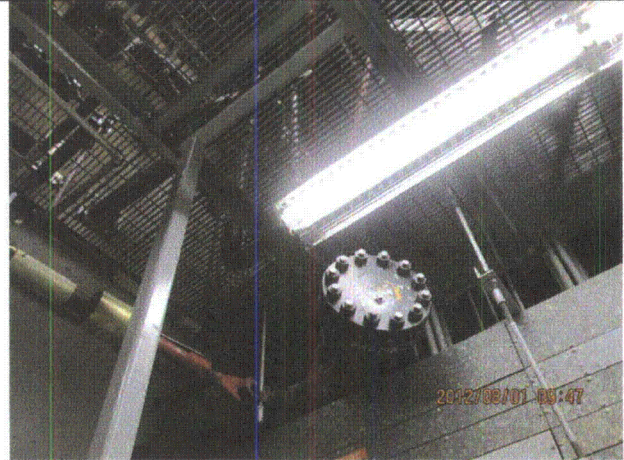
Equipment ID No.: D03-0302-0082E-LT

Equipment Class: (18) Instruments on Racks

Equipment Description: CRD/ East Bank SDV Tank Level Transmitter



20120801-Dresden-3 149



20120801-Dresden-3 150



20120801-Dresden-3 151



20120801-Dresden-3 152



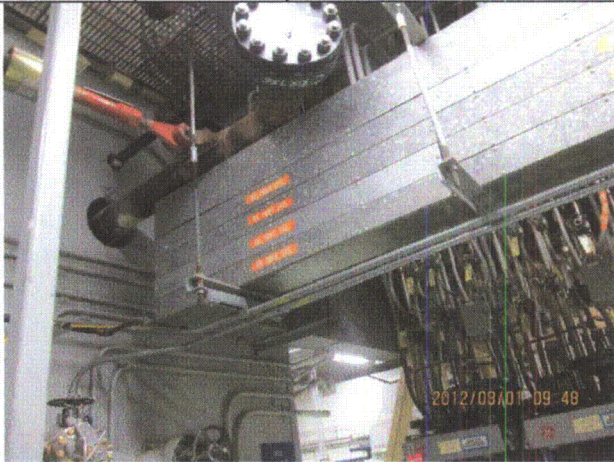
Status: ☒ Y ☐ N ☐ U

**Seismic Walkdown Checklist (SWC)**

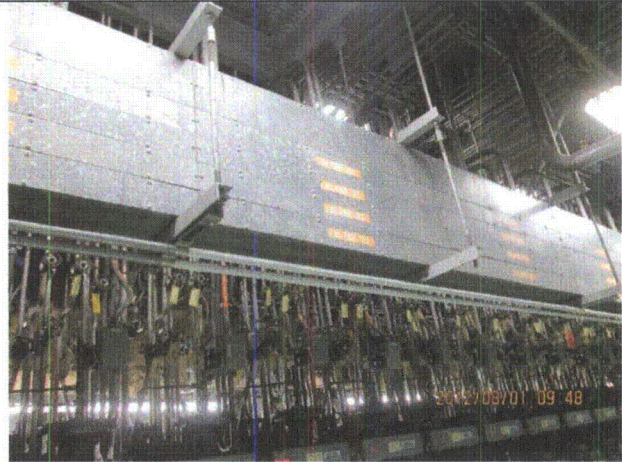
Equipment ID No.: D03-0302-0082E-LT

Equipment Class: (18) Instruments on Racks

Equipment Description: CRD/ East Bank SDV Tank Level Transmitter



20120801-Dresden-3 153



20120801-Dresden-3 154



20120801-Dresden-3 155



20120801-Dresden-3 156

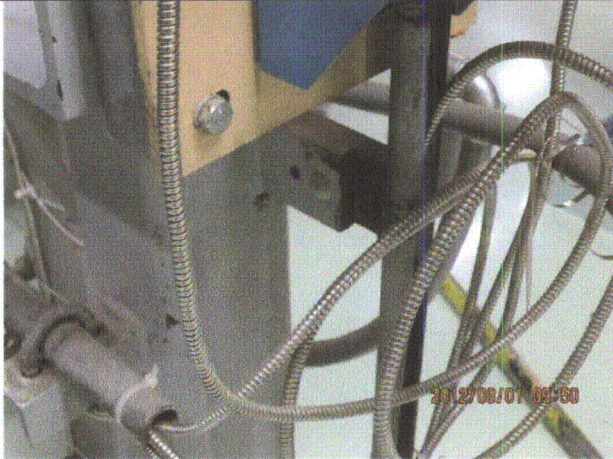
Status: ☒ Y ☐ N ☐ U

**Seismic Walkdown Checklist (SWC)**

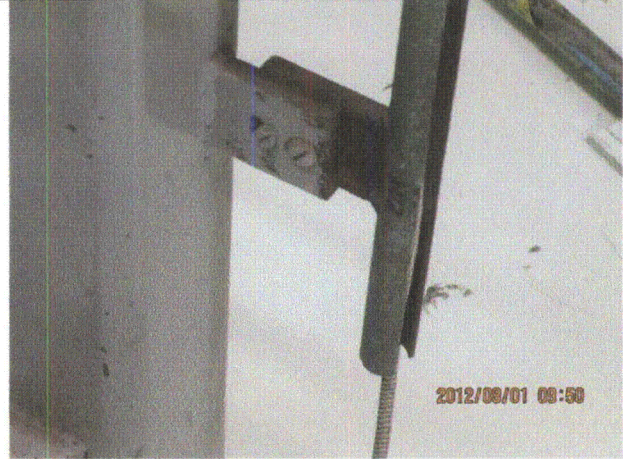
Equipment ID No.: D03-0302-0082E-LT

Equipment Class: (18) Instruments on Racks

Equipment Description: CRD/ East Bank SDV Tank Level Transmitter



20120801-Dresden-3 157



20120801-Dresden-3 158



Status: ☒ Y ☐ N ☐ U

### Seismic Walkdown Checklist (SWC)

Equipment ID No.: D03-0305-0010-0031-0125-A10

Equipment Class: (21) Tanks and Heat Exchangers

Equipment Description: CRD/ Insertion Accumulator, West Bank, Row 8, Position 15 (C-8)

Project: Dresden 3 SWEL

Location (Bldg, Elev, Room/Area): Reactor, 517.50 ft, ALL

Manufacturer/Model: \_\_\_\_\_

#### Instructions for Completing Checklist

This checklist may be used to document the results of the Seismic Walkdown of an item of equipment on the SWEL. The space below each of the following questions may be used to record the results of judgments and findings. Additional space is provided at the end of this checklist for documenting other comments.

#### Anchorage

1. Is anchorage configuration verification required (i.e., is the item one of the 50% of SWEL items requiring such verification)? No
2. Is the anchorage free of bent, broken, missing or loose hardware? Not Applicable
3. Is the anchorage free of corrosion that is more than mild surface oxidation? Not Applicable
4. Is the anchorage free of visible cracks in the concrete near the anchors? Not Applicable
5. Is the anchorage configuration consistent with plant documentation? (Note: This question only applies if the item is one of the 50% for which an anchorage configuration verification is required.) Not Applicable
6. Based on the above anchorage evaluations, is the anchorage free of potentially adverse seismic conditions? Yes  
*The insertion accumulator is an in-line component that is adequately restrained to the CRD/HCU support frame.*

Status: ☒ Y ☐ N ☐ U

**Seismic Walkdown Checklist (SWC)**

Equipment ID No.: D03-0305-0010-0031-0125-A10

Equipment Class: (21) Tanks and Heat Exchangers

Equipment Description: CRD/ Insertion Accumulator, West Bank, Row 8, Position 15 (C-8)

**Interaction Effects**

7. Are soft targets free from impact by nearby equipment or structures? Yes
8. Are overhead equipment, distribution systems, ceiling tiles and lighting, and masonry block walls not likely to collapse onto the equipment? Yes
9. Do attached lines have adequate flexibility to avoid damage? Yes
10. Based on the above seismic interaction evaluations, is equipment free of potentially adverse seismic interaction effects? Yes

**Other Adverse Conditions**

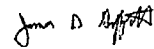
11. Have you looked for and found no adverse seismic conditions that could adversely affect the safety functions of the equipment? Yes

**Comments**

Seismic Walkdown Team: J. Griffith & M. Wodarczyk - 7/31/2012

For photographs, see SWC for D03-0305-0010-0031-H20.

Evaluated by:



James Griffith

Date: 10/24/2012



Michael Wodarczyk

10/24/2012

**Photos**



Status: ☒ Y ☐ N ☐ U

**Seismic Walkdown Checklist (SWC)**

Equipment ID No.: D03-0305-0010-0031-0126-V05

Equipment Class: (7) Fluid-Operated Valves

Equipment Description: CRD/ Accumulator Insertion Scram Valve, West Bank, Row 8, Position 15 (C-8)

Project: Dresden 3 SWEL

Location (Bldg, Elev, Room/Area): Reactor, 517.50 ft, ALL

Manufacturer/Model: \_\_\_\_\_

**Instructions for Completing Checklist**

This checklist may be used to document the results of the Seismic Walkdown of an item of equipment on the SWEL. The space below each of the following questions may be used to record the results of judgments and findings. Additional space is provided at the end of this checklist for documenting other comments.

**Anchorage**

1. Is anchorage configuration verification required (i.e., is the item one of the 50% of SWEL items requiring such verification)? No
  
2. Is the anchorage free of bent, broken, missing or loose hardware? Not Applicable
  
3. Is the anchorage free of corrosion that is more than mild surface oxidation? Not Applicable
  
4. Is the anchorage free of visible cracks in the concrete near the anchors? Not Applicable
  
5. Is the anchorage configuration consistent with plant documentation? (Note: This question only applies if the item is one of the 50% for which an anchorage configuration verification is required.) Not Applicable
  
6. Based on the above anchorage evaluations, is the anchorage free of potentially adverse seismic conditions? Yes  
*The insertion scram valve is an in-line component with the operator adequately restrained to the CRD/HCU support frame.*

Status: ☒ Y ☐ N ☐ U

**Seismic Walkdown Checklist (SWC)**

Equipment ID No.: D03-0305-0010-0031-0126-V05

Equipment Class: (7) Fluid-Operated Valves

Equipment Description: CRD/ Accumulator Insertion Scram Valve, West Bank, Row 8, Position 15 (C-8)

**Interaction Effects**

- |   |     |
|---|-----|
| 7. Are soft targets free from impact by nearby equipment or structures?   | Yes |
| 8. Are overhead equipment, distribution systems, ceiling tiles and lighting, and masonry block walls not likely to collapse onto the equipment? | Yes |
| 9. Do attached lines have adequate flexibility to avoid damage?   | Yes |
| 10. Based on the above seismic interaction evaluations, is equipment free of potentially adverse seismic interaction effects?                   | Yes |

**Other Adverse Conditions**

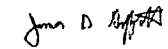
- |  |     |
|--|-----|
| 11. Have you looked for and found no adverse seismic conditions that could adversely affect the safety functions of the equipment? | Yes |
|--|-----|

**Comments**

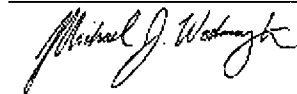
Seismic Walkdown Team: J. Griffith & M. Wodarczyk - 7/31/12

For photographs, see SWC for D03-0305-0010-0031-H20.

Evaluated by:

 James Griffith

Date: 10/24/2012



Michael Wodarczyk

10/24/2012

**Photos**



Status: ☒ Y ☐ N ☐ U

### Seismic Walkdown Checklist (SWC)

Equipment ID No.: D03-0305-0010-0031-0127-V05

Equipment Class: (7) Fluid-Operated Valves

Equipment Description: CRD/ Withdraw to Scram Discharge Volume Scram Valve, West Bank, Row 8,  
Position 15 (C-8)

Project: Dresden 3 SWEL

Location (Bldg, Elev, Room/Area): Reactor, 517.50 ft, ALL

Manufacturer/Model:

#### Instructions for Completing Checklist

This checklist may be used to document the results of the Seismic Walkdown of an item of equipment on the SWEL. The space below each of the following questions may be used to record the results of judgments and findings. Additional space is provided at the end of this checklist for documenting other comments.

#### Anchorage

1. Is anchorage configuration verification required (i.e., is the item one of the 50% of SWEL items requiring such verification)? No
2. Is the anchorage free of bent, broken, missing or loose hardware? Not Applicable
3. Is the anchorage free of corrosion that is more than mild surface oxidation? Not Applicable
4. Is the anchorage free of visible cracks in the concrete near the anchors? Not Applicable
5. Is the anchorage configuration consistent with plant documentation? (Note: This question only applies if the item is one of the 50% for which an anchorage configuration verification is required.) Not Applicable
6. Based on the above anchorage evaluations, is the anchorage free of potentially adverse seismic conditions? Yes  
*The discharge volume scram valve is an in-line component with the operator adequately restrained to the CRD/HCU support frame.*

Status: ☒ Y ☐ N ☐ U

**Seismic Walkdown Checklist (SWC)**

Equipment ID No.: D03-0305-0010-0031-0127-V05

Equipment Class: (7) Fluid-Operated Valves

Equipment Description: CRD/ Withdraw to Scram Discharge Volume Scram Valve, West Bank, Row 8,  
Position 15 (C-8)

**Interaction Effects**

- |   |     |
|---|-----|
| 7. Are soft targets free from impact by nearby equipment or structures?   | Yes |
| 8. Are overhead equipment, distribution systems, ceiling tiles and lighting, and masonry block walls not likely to collapse onto the equipment? | Yes |
| 9. Do attached lines have adequate flexibility to avoid damage?   | Yes |
| 10. Based on the above seismic interaction evaluations, is equipment free of potentially adverse seismic interaction effects?                   | Yes |

**Other Adverse Conditions**

- |  |     |
|--|-----|
| 11. Have you looked for and found no adverse seismic conditions that could adversely affect the safety functions of the equipment? | Yes |
|--|-----|

**Comments**

Seismic Walkdown Team: J. Griffith & M. Wodarczyk - 7/31/2012

For photographs, see SWC for D03-0305-0010-0031-H20.

Evaluated by: James D. Griffith James Griffith Date: 10/24/2012

Michael J. Wodarczyk Michael Wodarczyk 10/24/2012

**Photos**



Status: ☒ Y ☐ N ☐ U

**Seismic Walkdown Checklist (SWC)**

Equipment ID No.: D03-0305-0010-0031-H20

Equipment Class: (0) Other

Equipment Description: CRD/ Hydraulic Control Unit, West Bank, Row 8, Position 15 (C-8)

Project: Dresden 3 SWEL

Location (Bldg, Elev, Room/Area): Reactor, 517.50 ft, ALL

Manufacturer/Model: \_\_\_\_\_

**Instructions for Completing Checklist**

This checklist may be used to document the results of the Seismic Walkdown of an item of equipment on the SWEL. The space below each of the following questions may be used to record the results of judgments and findings. Additional space is provided at the end of this checklist for documenting other comments.

**Anchorage**

1. Is anchorage configuration verification required (i.e., is the item one of the 50% of SWEL items requiring such verification)? Yes
  
2. Is the anchorage free of bent, broken, missing or loose hardware? Yes
  
3. Is the anchorage free of corrosion that is more than mild surface oxidation? Yes
  
4. Is the anchorage free of visible cracks in the concrete near the anchors? Yes
  
5. Is the anchorage configuration consistent with plant documentation? (Note: This question only applies if the item is one of the 50% for which an anchorage configuration verification is required.) Yes  
*Anchorage is shown on Drawings M-251, Rev. R, and M-258, Rev. J.*
  
6. Based on the above anchorage evaluations, is the anchorage free of potentially adverse seismic conditions? Yes

Status: ☒ Y ☐ N ☐ U

**Seismic Walkdown Checklist (SWC)**

Equipment ID No.: D03-0305-0010-0031-H20

Equipment Class: (0) Other

Equipment Description: CRD/ Hydraulic Control Unit, West Bank, Row 8, Position 15 (C-8)

**Interaction Effects**

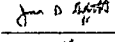

- |   |     |
|---|-----|
| 7. Are soft targets free from impact by nearby equipment or structures?   | Yes |
| 8. Are overhead equipment, distribution systems, ceiling tiles and lighting, and masonry block walls not likely to collapse onto the equipment? | Yes |
| 9. Do attached lines have adequate flexibility to avoid damage?   | Yes |
| 10. Based on the above seismic interaction evaluations, is equipment free of potentially adverse seismic interaction effects?                   | Yes |

**Other Adverse Conditions**

- |  |     |
|--|-----|
| 11. Have you looked for and found no adverse seismic conditions that could adversely affect the safety functions of the equipment? | Yes |
|--|-----|

**Comments**

Seismic Walkdown Team: J. Griffith & M. Wodarczyk -7/31/2012

Evaluated by:	 James Griffith	Date:	<u>9/30/2012</u>
	 Michael Wodarczyk		<u>9/30/2012</u>



Status: ☒ Y ☐ N ☐ U

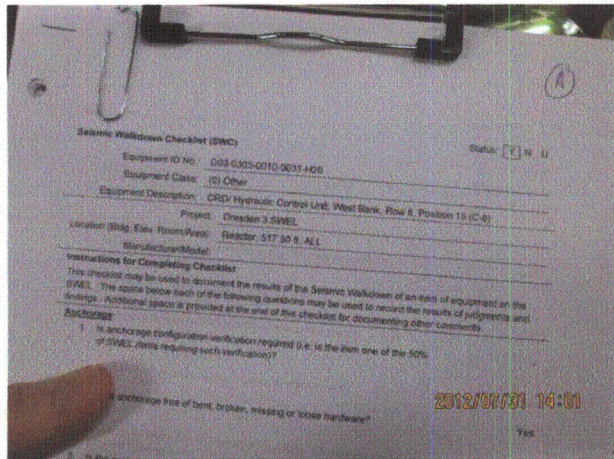
### Seismic Walkdown Checklist (SWC)

Equipment ID No.: D03-0305-0010-0031-H20

Equipment Class: (0) Other

Equipment Description: CRD/ Hydraulic Control Unit, West Bank, Row 8, Position 15 (C-8)

#### Photos



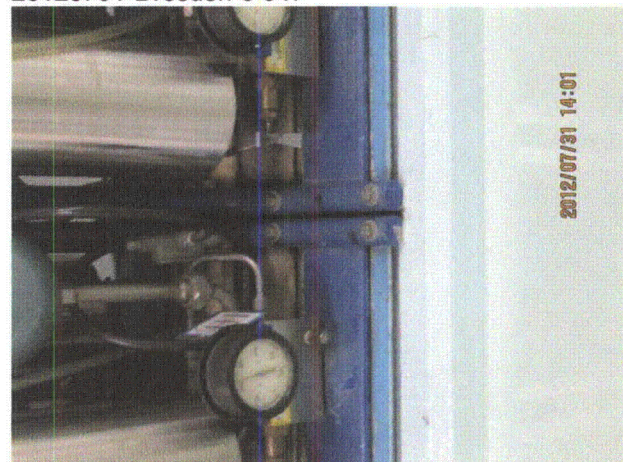
20120731-Dresden-3 346



20120731-Dresden-3 347



20120731-Dresden-3 348



20120731-Dresden-3 349



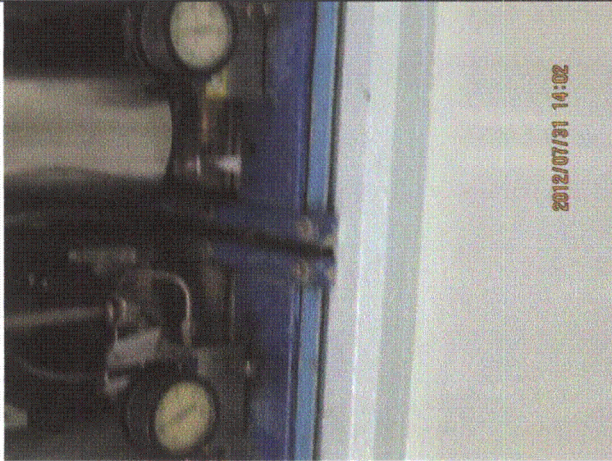
Status: ☒ Y ☐ N ☐ U

**Seismic Walkdown Checklist (SWC)**

Equipment ID No.: D03-0305-0010-0031-H20

Equipment Class: (0) Other

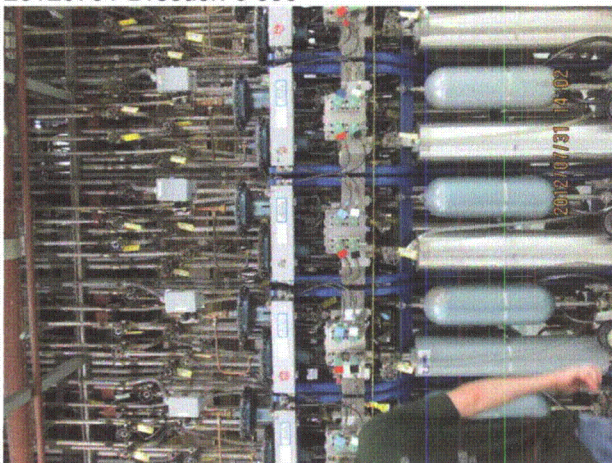
Equipment Description: CRD/ Hydraulic Control Unit, West Bank, Row 8, Position 15 (C-8)



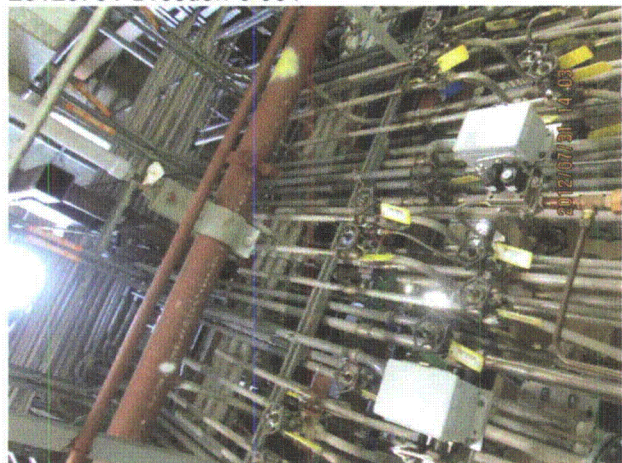
20120731-Dresden-3 350



20120731-Dresden-3 351



20120731-Dresden-3 352



20120731-Dresden-3 353



Status: ☒ Y ☐ N ☐ U

**Seismic Walkdown Checklist (SWC)**

Equipment ID No.: D03-0305-0010-0031-H20

Equipment Class: (0) Other

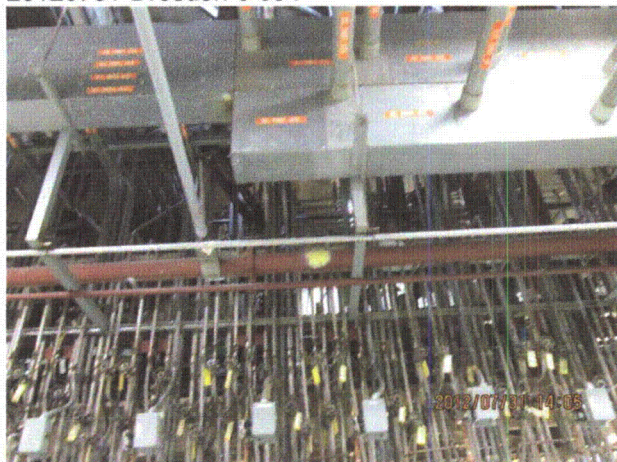
Equipment Description: CRD/ Hydraulic Control Unit, West Bank, Row 8, Position 15 (C-8)



20120731-Dresden-3 354



20120731-Dresden-3 355



20120731-Dresden-3 356



20120731-Dresden-3 357



Status: ☒ Y ☐ N ☐ U

**Seismic Walkdown Checklist (SWC)**

Equipment ID No.: D03-0305-0010-0031-H20

Equipment Class: (0) Other

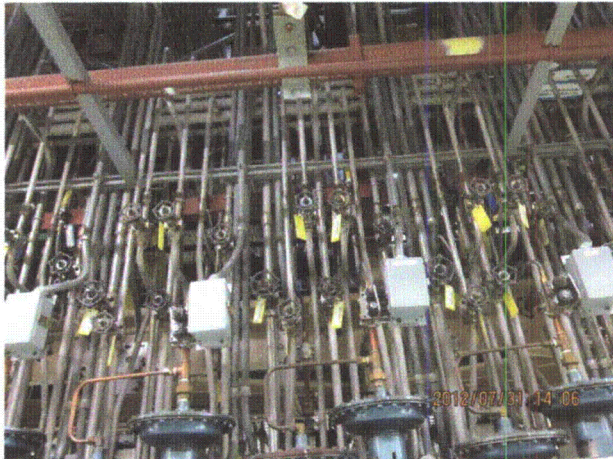
Equipment Description: CRD/ Hydraulic Control Unit, West Bank, Row 8, Position 15 (C-8)



20120731-Dresden-3 358



20120731-Dresden-3 359



20120731-Dresden-3 360



20120731-Dresden-3 361



Status: ☒ Y ☐ N ☐ U

**Seismic Walkdown Checklist (SWC)**

Equipment ID No.: D03-0305-0010-0031-H20

Equipment Class: (0) Other

Equipment Description: CRD/ Hydraulic Control Unit, West Bank, Row 8, Position 15 (C-8)



20120731-Dresden-3 362

Status: ☒ Y ☐ N ☐ U

### Seismic Walkdown Checklist (SWC)

Equipment ID No.: D03-0305-0030-0043-0125-A10

Equipment Class: (21) Tanks and Heat Exchangers

Equipment Description: CRD/ Insertion Accumulator, West Bank, Row 8, Position 4 (H-11)

Project: Dresden 3 SWEL

Location (Bldg, Elev, Room/Area): Reactor, 517.50 ft, ALL

Manufacturer/Model: \_\_\_\_\_

#### Instructions for Completing Checklist

This checklist may be used to document the results of the Seismic Walkdown of an item of equipment on the SWEL. The space below each of the following questions may be used to record the results of judgments and findings. Additional space is provided at the end of this checklist for documenting other comments.

#### Anchorage

1. Is anchorage configuration verification required (i.e., is the item one of the 50% of SWEL items requiring such verification)? No
2. Is the anchorage free of bent, broken, missing or loose hardware? Not Applicable
3. Is the anchorage free of corrosion that is more than mild surface oxidation? Not Applicable
4. Is the anchorage free of visible cracks in the concrete near the anchors? Not Applicable
5. Is the anchorage configuration consistent with plant documentation? (Note: This question only applies if the item is one of the 50% for which an anchorage configuration verification is required.) Not Applicable
6. Based on the above anchorage evaluations, is the anchorage free of potentially adverse seismic conditions? Yes  
*The insertion accumulator is an in-line component that is adequately restrained to the CRD/HCU support frame.*



Status: ☒ Y ☐ N ☐ U

**Seismic Walkdown Checklist (SWC)**

Equipment ID No.: D03-0305-0030-0043-0125-A10

Equipment Class: (21) Tanks and Heat Exchangers

Equipment Description: CRD/ Insertion Accumulator, West Bank, Row 8, Position 4 (H-11)

**Interaction Effects**

- |  |     |
|--|-----|
| 7. Are soft targets free from impact by nearby equipment or structures?  | Yes |
| 8. Are overhead equipment, distribution systems, ceiling tiles and lighting, and masonry block walls not likely to collapse onto the equipment?<br><i>Overhead light fixtures judged to be acceptable.</i> | Yes |
| 9. Do attached lines have adequate flexibility to avoid damage?  | Yes |
| 10. Based on the above seismic interaction evaluations, is equipment free of potentially adverse seismic interaction effects?  | Yes |

**Other Adverse Conditions**

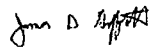
- |  |     |
|--|-----|
| 11. Have you looked for and found no adverse seismic conditions that could adversely affect the safety functions of the equipment? | Yes |
|--|-----|

**Comments**

Seismic Walkdown Team: J. Griffith & M. Wodarczyk - 7/31/2012

For photographs, see SWC for D03-0305-0030-0043-H20.

Evaluated by:



James Griffith

Date: 10/24/2012



Michael Wodarczyk

10/24/2012

**Photos**

Status: ☒ Y ☐ N ☐ U

### Seismic Walkdown Checklist (SWC)

Equipment ID No.: D03-0305-0030-0043-0126-V05

Equipment Class: (7) Fluid-Operated Valves

Equipment Description: CRD/ Accumulator Insertion Scram Valve, West Bank, Row 8, Position 4 (H-11)

Project: Dresden 3 SWEL

Location (Bldg, Elev, Room/Area): Reactor, 517.50 ft, ALL

Manufacturer/Model: \_\_\_\_\_

#### Instructions for Completing Checklist

This checklist may be used to document the results of the Seismic Walkdown of an item of equipment on the SWEL. The space below each of the following questions may be used to record the results of judgments and findings. Additional space is provided at the end of this checklist for documenting other comments.

#### Anchorage

1. Is anchorage configuration verification required (i.e., is the item one of the 50% of SWEL items requiring such verification)? No
  
2. Is the anchorage free of bent, broken, missing or loose hardware? Not Applicable
  
3. Is the anchorage free of corrosion that is more than mild surface oxidation? Not Applicable
  
4. Is the anchorage free of visible cracks in the concrete near the anchors? Not Applicable
  
5. Is the anchorage configuration consistent with plant documentation? (Note: This question only applies if the item is one of the 50% for which an anchorage configuration verification is required.) Not Applicable
  
6. Based on the above anchorage evaluations, is the anchorage free of potentially adverse seismic conditions? Yes  
*The insertion scram valve is an in-line component with the operator adequately restrained to the CRD/HCU support frame.*



Status: ☒ Y ☐ N ☐ U

**Seismic Walkdown Checklist (SWC)**

Equipment ID No.: D03-0305-0030-0043-0126-V05

Equipment Class: (7) Fluid-Operated Valves

Equipment Description: CRD/ Accumulator Insertion Scram Valve, West Bank, Row 8, Position 4 (H-11)

**Interaction Effects**

- |  |     |
|--|-----|
| 7. Are soft targets free from impact by nearby equipment or structures?  | Yes |
| 8. Are overhead equipment, distribution systems, ceiling tiles and lighting, and masonry block walls not likely to collapse onto the equipment?<br><i>Overhead light fixtures judged to be acceptable.</i> | Yes |
| 9. Do attached lines have adequate flexibility to avoid damage?  | Yes |
| 10. Based on the above seismic interaction evaluations, is equipment free of potentially adverse seismic interaction effects?  | Yes |

**Other Adverse Conditions**

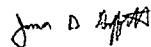
- |  |     |
|--|-----|
| 11. Have you looked for and found no adverse seismic conditions that could adversely affect the safety functions of the equipment? | Yes |
|--|-----|

**Comments**

Seismic Walkdown Team: J. Griffith & M. Wodarczyk - 7/31/2012

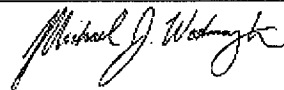
For photographs, see SWC for D03-0305-0030-0043-H20.

Evaluated by:



James Griffith

Date: 10/24/2012



Michael Wodarczyk

10/24/2012

**Photos**

Status: ☒ Y ☐ N ☐ U

### Seismic Walkdown Checklist (SWC)

Equipment ID No.: D03-0305-0030-0043-0127-V05

Equipment Class: (7) Fluid-Operated Valves

Equipment Description: CRD/ Withdraw to Scram Discharge Volume Scram Valve, West Bank, Row 8,  
Position 4 (H-11)

Project: Dresden 3 SWEL

Location (Bldg, Elev, Room/Area): Reactor, 517.50 ft, ALL

Manufacturer/Model:

#### Instructions for Completing Checklist

This checklist may be used to document the results of the Seismic Walkdown of an item of equipment on the SWEL. The space below each of the following questions may be used to record the results of judgments and findings. Additional space is provided at the end of this checklist for documenting other comments.

#### Anchorage

1. Is anchorage configuration verification required (i.e., is the item one of the 50% of SWEL items requiring such verification)? No
2. Is the anchorage free of bent, broken, missing or loose hardware? Not Applicable
3. Is the anchorage free of corrosion that is more than mild surface oxidation? Not Applicable
4. Is the anchorage free of visible cracks in the concrete near the anchors? Not Applicable
5. Is the anchorage configuration consistent with plant documentation? (Note: This question only applies if the item is one of the 50% for which an anchorage configuration verification is required.) Not Applicable
6. Based on the above anchorage evaluations, is the anchorage free of potentially adverse seismic conditions? Yes  
*The discharge volume scram valve is an in-line component with the operator adequately restrained to the CRD/HCU support frame.*



Status: ☒ Y ☐ N ☐ U

### Seismic Walkdown Checklist (SWC)

Equipment ID No.: D03-0305-0030-0043-0127-V05

Equipment Class: (7) Fluid-Operated Valves

Equipment Description: CRD/ Withdraw to Scram Discharge Volume Scram Valve, West Bank, Row 8,  
Position 4 (H-11)

#### Interaction Effects

7. Are soft targets free from impact by nearby equipment or structures? Yes
8. Are overhead equipment, distribution systems, ceiling tiles and lighting, and masonry block walls not likely to collapse onto the equipment? Yes  
*Overhead light fixtures judged to be acceptable.*
9. Do attached lines have adequate flexibility to avoid damage? Yes
10. Based on the above seismic interaction evaluations, is equipment free of potentially adverse seismic interaction effects? Yes

#### Other Adverse Conditions

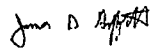
11. Have you looked for and found no adverse seismic conditions that could adversely affect the safety functions of the equipment? Yes

#### Comments

Seismic Walkdown Team: J. Griffith & M. Wodarczyk - 7/31/2012

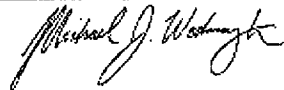
For photographs, see SWC for D03-0305-0030-0043-H20.

Evaluated by:



James Griffith

Date: 10/24/2012



Michael Wodarczyk

10/24/2012

#### Photos

Status: ☒ Y ☐ N ☐ U

### Seismic Walkdown Checklist (SWC)

Equipment ID No.: D03-0305-0030-0043-H20

Equipment Class: (0) Other

Equipment Description: CRD/ Hydraulic Control Unit, West Bank, Row 8, Position 4 (H-11)

Project: Dresden 3 SWEL

Location (Bldg, Elev, Room/Area): Reactor, 517.50 ft, ALL

Manufacturer/Model:

#### Instructions for Completing Checklist

This checklist may be used to document the results of the Seismic Walkdown of an item of equipment on the SWEL. The space below each of the following questions may be used to record the results of judgments and findings. Additional space is provided at the end of this checklist for documenting other comments.

#### Anchorage

1. Is anchorage configuration verification required (i.e., is the item one of the 50% of SWEL items requiring such verification)? Yes
2. Is the anchorage free of bent, broken, missing or loose hardware? Yes
3. Is the anchorage free of corrosion that is more than mild surface oxidation? Yes
4. Is the anchorage free of visible cracks in the concrete near the anchors? Yes
5. Is the anchorage configuration consistent with plant documentation? (Note: This question only applies if the item is one of the 50% for which an anchorage configuration verification is required.) Yes  
*Anchorage is shown on Drawings M-251, Rev. R, and M-258, Rev. J.*
6. Based on the above anchorage evaluations, is the anchorage free of potentially adverse seismic conditions? Yes



Status: ☒ Y ☐ N ☐ U

**Seismic Walkdown Checklist (SWC)**

Equipment ID No.: D03-0305-0030-0043-H20

Equipment Class: (0) Other

Equipment Description: CRD/ Hydraulic Control Unit, West Bank, Row 8, Position 4 (H-11)

**Interaction Effects**

- |  |     |
|--|-----|
| 7. Are soft targets free from impact by nearby equipment or structures?  | Yes |
| 8. Are overhead equipment, distribution systems, ceiling tiles and lighting, and masonry block walls not likely to collapse onto the equipment?<br><i>Overhead light fixtures judged to be acceptable.</i> | Yes |
| 9. Do attached lines have adequate flexibility to avoid damage?  | Yes |
| 10. Based on the above seismic interaction evaluations, is equipment free of potentially adverse seismic interaction effects?  | Yes |

**Other Adverse Conditions**

- |  |     |
|--|-----|
| 11. Have you looked for and found no adverse seismic conditions that could adversely affect the safety functions of the equipment? | Yes |
|--|-----|

**Comments**

Seismic Walkdown Team: J. Griffith & M. Wodarczyk - 7/31/2012

Evaluated by:

James D. Griffith James Griffith

Date: 9/30/2012

Michael J. Wodarczyk

Michael Wodarczyk

9/30/2012

Status: ☒ Y ☐ N ☐ U

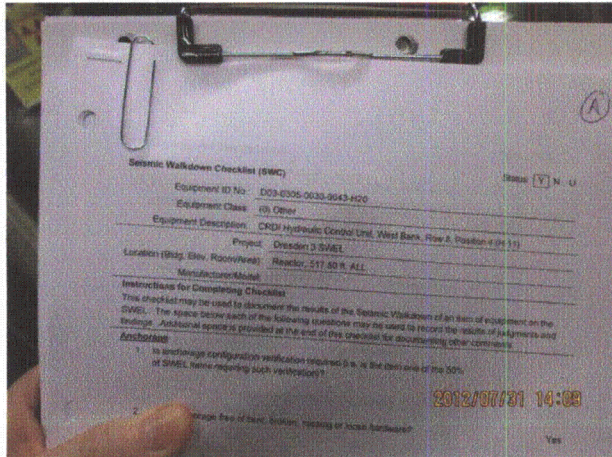
### Seismic Walkdown Checklist (SWC)

Equipment ID No.: D03-0305-0030-0043-H20

Equipment Class: (0) Other

Equipment Description: CRD/ Hydraulic Control Unit, West Bank, Row 8, Position 4 (H-11)

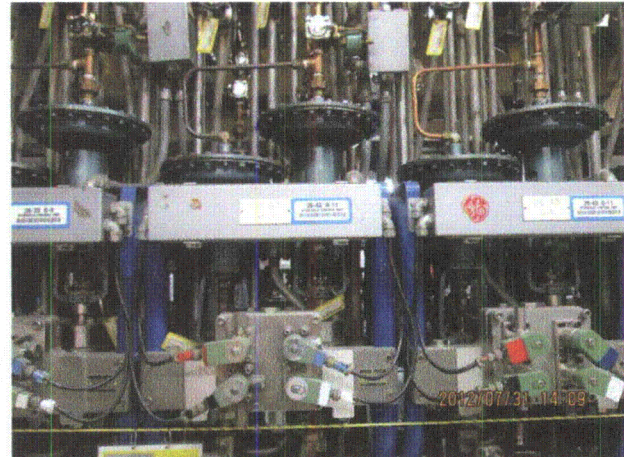
### Photos



20120731-Dresden-3 363



20120731-Dresden-3 365



20120731-Dresden-3 364



20120731-Dresden-3 366



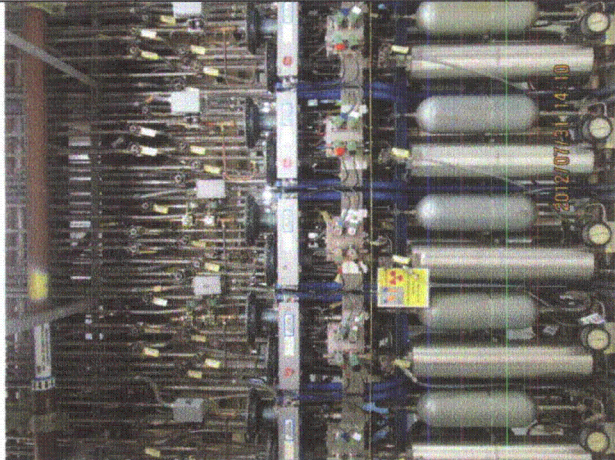
Status: ☒ Y ☐ N ☐ U

**Seismic Walkdown Checklist (SWC)**

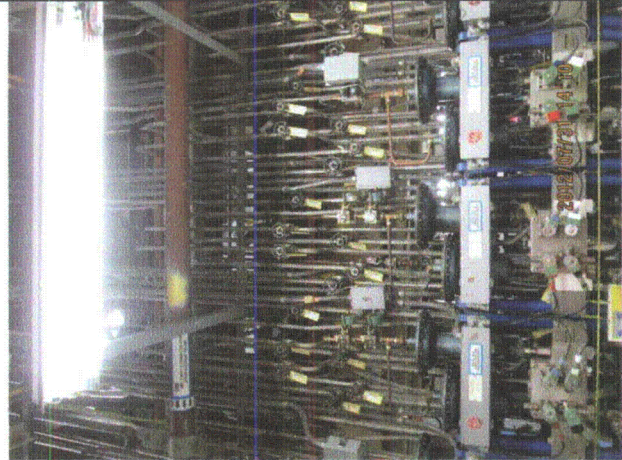
Equipment ID No.: D03-0305-0030-0043-H20

Equipment Class: (0) Other

Equipment Description: CRD/ Hydraulic Control Unit, West Bank, Row 8, Position 4 (H-11)



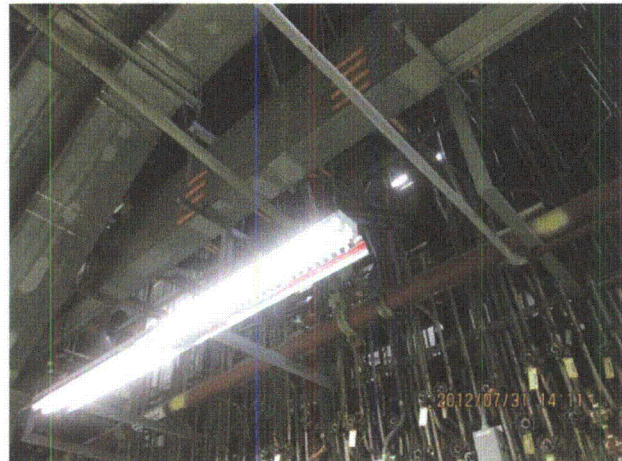
20120731-Dresden-3 367



20120731-Dresden-3 368



20120731-Dresden-3 369



20120731-Dresden-3 370



Status: ☒ Y ☐ N ☐ U

**Seismic Walkdown Checklist (SWC)**

Equipment ID No.: D03-0305-0030-0043-H20

Equipment Class: (0) Other

Equipment Description: CRD/ Hydraulic Control Unit, West Bank, Row 8, Position 4 (H-11)



2012/07/31 14:11

20120731-Dresden-3 371



2012/07/31 14:11

20120731-Dresden-3 373



2012/07/31 14:11

20120731-Dresden-3 372



2012/07/31 14:12

20120731-Dresden-3 374



Status: ☒ Y ☐ N ☐ U

**Seismic Walkdown Checklist (SWC)**

Equipment ID No.: D03-0305-0030-0043-H20

Equipment Class: (0) Other

Equipment Description: CRD/ Hydraulic Control Unit, West Bank, Row 8, Position 4 (H-11)



20120731-Dresden-3 375

Status: ☒ Y ☐ N ☐ U

### Seismic Walkdown Checklist (SWC)

Equipment ID No.: D03-0305-0046-0031-0125-A10

Equipment Class: (21) Tanks and Heat Exchangers

Equipment Description: CRD/ Insertion Accumulator, East Bank, Row 1, Position 16 (M-8)

Project: Dresden 3 SWEL

Location (Bldg, Elev, Room/Area): Reactor, 517.50 ft, ALL

Manufacturer/Model: \_\_\_\_\_

#### Instructions for Completing Checklist

This checklist may be used to document the results of the Seismic Walkdown of an item of equipment on the SWEL. The space below each of the following questions may be used to record the results of judgments and findings. Additional space is provided at the end of this checklist for documenting other comments.

#### Anchorage

1. Is anchorage configuration verification required (i.e., is the item one of the 50% of SWEL items requiring such verification)? No
2. Is the anchorage free of bent, broken, missing or loose hardware? Not Applicable
3. Is the anchorage free of corrosion that is more than mild surface oxidation? Not Applicable
4. Is the anchorage free of visible cracks in the concrete near the anchors? Not Applicable
5. Is the anchorage configuration consistent with plant documentation? (Note: This question only applies if the item is one of the 50% for which an anchorage configuration verification is required.) Not Applicable
6. Based on the above anchorage evaluations, is the anchorage free of potentially adverse seismic conditions? Yes  
*The insertion accumulator is an in-line component that is adequately restrained to the CRD/HCU support frame.*



Status: ☒ Y ☐ N ☐ U

**Seismic Walkdown Checklist (SWC)**

Equipment ID No.: D03-0305-0046-0031-0125-A10

Equipment Class: (21) Tanks and Heat Exchangers

Equipment Description: CRD/ Insertion Accumulator, East Bank, Row 1, Position 16 (M-8)

**Interaction Effects**

7. Are soft targets free from impact by nearby equipment or structures? Yes
8. Are overhead equipment, distribution systems, ceiling tiles and lighting, and masonry block walls not likely to collapse onto the equipment? Yes
9. Do attached lines have adequate flexibility to avoid damage? Yes
10. Based on the above seismic interaction evaluations, is equipment free of potentially adverse seismic interaction effects? Yes

**Other Adverse Conditions**

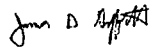
11. Have you looked for and found no adverse seismic conditions that could adversely affect the safety functions of the equipment? Yes

**Comments**

Seismic Walkdown Team: J. Griffith & M. Wodarczyk - 7/31/2012

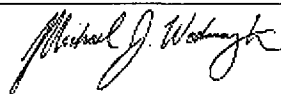
For photographs, see SWC for D03-0305-0046-0031-H20.

Evaluated by:



James Griffith

Date: 10/24/2012



Michael Wodarczyk

10/24/2012

**Photos**

Status: ☒ Y ☐ N ☐ U

**Seismic Walkdown Checklist (SWC)**

Equipment ID No.: D03-0305-0046-0031-0126-V05

Equipment Class: (7) Fluid-Operated Valves

Equipment Description: CRD/ Accumulator Insertion Scram Valve, East Bank, Row 1, Position 16 (M-8)

Project: Dresden 3 SWEL

Location (Bldg, Elev, Room/Area): Reactor, 517.50 ft, ALL

Manufacturer/Model:

**Instructions for Completing Checklist**

This checklist may be used to document the results of the Seismic Walkdown of an item of equipment on the SWEL. The space below each of the following questions may be used to record the results of judgments and findings. Additional space is provided at the end of this checklist for documenting other comments.

**Anchorage**

1. Is anchorage configuration verification required (i.e., is the item one of the 50% of SWEL items requiring such verification)? No
2. Is the anchorage free of bent, broken, missing or loose hardware? Not Applicable
3. Is the anchorage free of corrosion that is more than mild surface oxidation? Not Applicable
4. Is the anchorage free of visible cracks in the concrete near the anchors? Not Applicable
5. Is the anchorage configuration consistent with plant documentation? (Note: This question only applies if the item is one of the 50% for which an anchorage configuration verification is required.) Not Applicable
6. Based on the above anchorage evaluations, is the anchorage free of potentially adverse seismic conditions? Yes  
*The insertion scram valve is an in-line component with the operator adequately restrained to the CRD/HCU support frame.*



Status: ☒ Y ☐ N ☐ U

**Seismic Walkdown Checklist (SWC)**

Equipment ID No.: D03-0305-0046-0031-0126-V05

Equipment Class: (7) Fluid-Operated Valves

Equipment Description: CRD/ Accumulator Insertion Scram Valve, East Bank, Row 1, Position 16 (M-8)

**Interaction Effects**

7. Are soft targets free from impact by nearby equipment or structures? Yes
8. Are overhead equipment, distribution systems, ceiling tiles and lighting, and masonry block walls not likely to collapse onto the equipment? Yes
9. Do attached lines have adequate flexibility to avoid damage? Yes
10. Based on the above seismic interaction evaluations, is equipment free of potentially adverse seismic interaction effects? Yes

**Other Adverse Conditions**

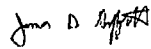
11. Have you looked for and found no adverse seismic conditions that could adversely affect the safety functions of the equipment? Yes

**Comments**

Seismic Walkdown Team: J. Griffith & M. Wodarczyk - 7/31/2012

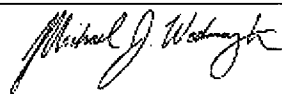
For photographs, see SWC for D03-0305-0046-0031-H20.

Evaluated by:



James Griffith

Date: 10/24/2012



Michael Wodarczyk

10/24/2012

**Photos**

Status: ☒ Y ☐ N ☐ U

### Seismic Walkdown Checklist (SWC)

Equipment ID No.: D03-0305-0046-0031-0127-V05

Equipment Class: (7) Fluid-Operated Valves

Equipment Description: CRD/ Withdraw to Scram Discharge Volume Scram Valve, East Bank, Row 1,  
Position 16 (M-8)

Project: Dresden 3 SWEL

Location (Bldg, Elev, Room/Area): Reactor, 517.50 ft, ALL

Manufacturer/Model:

#### Instructions for Completing Checklist

This checklist may be used to document the results of the Seismic Walkdown of an item of equipment on the SWEL. The space below each of the following questions may be used to record the results of judgments and findings. Additional space is provided at the end of this checklist for documenting other comments.

#### Anchorage

1. Is anchorage configuration verification required (i.e., is the item one of the 50% of SWEL items requiring such verification)? No
2. Is the anchorage free of bent, broken, missing or loose hardware? Not Applicable
3. Is the anchorage free of corrosion that is more than mild surface oxidation? Not Applicable
4. Is the anchorage free of visible cracks in the concrete near the anchors? Not Applicable
5. Is the anchorage configuration consistent with plant documentation? (Note: This question only applies if the item is one of the 50% for which an anchorage configuration verification is required.) Not Applicable
6. Based on the above anchorage evaluations, is the anchorage free of potentially adverse seismic conditions? Yes  
*The discharge volume scram valve is an in-line component with the operator adequately restrained to the CRD/HCU support frame.*



Status: ☒ Y ☐ N ☐ U

### Seismic Walkdown Checklist (SWC)

Equipment ID No.: D03-0305-0046-0031-0127-V05

Equipment Class: (7) Fluid-Operated Valves

CRD/ Withdraw to Scram Discharge Volume Scram Valve, East Bank, Row 1,  
Equipment Description: Position 16 (M-8)

#### Interaction Effects

7. Are soft targets free from impact by nearby equipment or structures? Yes
8. Are overhead equipment, distribution systems, ceiling tiles and lighting, and masonry block walls not likely to collapse onto the equipment? Yes
9. Do attached lines have adequate flexibility to avoid damage? Yes
10. Based on the above seismic interaction evaluations, is equipment free of potentially adverse seismic interaction effects? Yes

#### Other Adverse Conditions

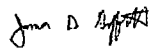
11. Have you looked for and found no adverse seismic conditions that could adversely affect the safety functions of the equipment? Yes

#### Comments

Seismic Walkdown Team: J. Griffith & M. Wodarczyk - 7/31/2012

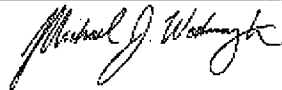
For photographs, see SWC for D03-0305-0046-0031-H20.

Evaluated by:



James Griffith

Date: 10/24/2012



Michael Wodarczyk

10/24/2012

#### Photos

Status: ☒ Y ☐ N ☐ U

**Seismic Walkdown Checklist (SWC)**

Equipment ID No.: D03-0305-0046-0031-H20

Equipment Class: (0) Other

Equipment Description: CRD/ Hydraulic Control Unit, East Bank, Row 1, Position 16 (M-8)

Project: Dresden 3 SWEL

Location (Bldg, Elev, Room/Area): Reactor, 517.50 ft, ALL

Manufacturer/Model: \_\_\_\_\_

**Instructions for Completing Checklist**

This checklist may be used to document the results of the Seismic Walkdown of an item of equipment on the SWEL. The space below each of the following questions may be used to record the results of judgments and findings. Additional space is provided at the end of this checklist for documenting other comments.

**Anchorage**

- |   |     |
|---|-----|
| 1. Is anchorage configuration verification required (i.e., is the item one of the 50% of SWEL items requiring such verification)?   | Yes |
| 2. Is the anchorage free of bent, broken, missing or loose hardware?  | Yes |
| 3. Is the anchorage free of corrosion that is more than mild surface oxidation?   | Yes |
| 4. Is the anchorage free of visible cracks in the concrete near the anchors?  | Yes |
| 5. Is the anchorage configuration consistent with plant documentation? (Note: This question only applies if the item is one of the 50% for which an anchorage configuration verification is required.)<br><i>Anchorage is shown on Drawings M-251, Rev. R, and M-258, Rev. J.</i> | Yes |
| 6. Based on the above anchorage evaluations, is the anchorage free of potentially adverse seismic conditions?   | Yes |



Status: ☒ Y ☐ N ☐ U

**Seismic Walkdown Checklist (SWC)**

Equipment ID No.: D03-0305-0046-0031-H20

Equipment Class: (0) Other

Equipment Description: CRD/ Hydraulic Control Unit, East Bank, Row 1, Position 16 (M-8)

**Interaction Effects**

- |   |     |
|---|-----|
| 7. Are soft targets free from impact by nearby equipment or structures?   | Yes |
| 8. Are overhead equipment, distribution systems, ceiling tiles and lighting, and masonry block walls not likely to collapse onto the equipment? | Yes |
| 9. Do attached lines have adequate flexibility to avoid damage?   | Yes |
| 10. Based on the above seismic interaction evaluations, is equipment free of potentially adverse seismic interaction effects?                   | Yes |

**Other Adverse Conditions**

- |  |     |
|--|-----|
| 11. Have you looked for and found no adverse seismic conditions that could adversely affect the safety functions of the equipment? | Yes |
|--|-----|

**Comments**

Seismic Walkdown Team: J. Griffith & M. Wodarczyk - 7/31/2012

Evaluated by: James D. Griffith James Griffith Date: 9/30/2012

Michael J. Wodarczyk Michael Wodarczyk 9/30/2012

Status: ☒ Y ☐ N ☐ U

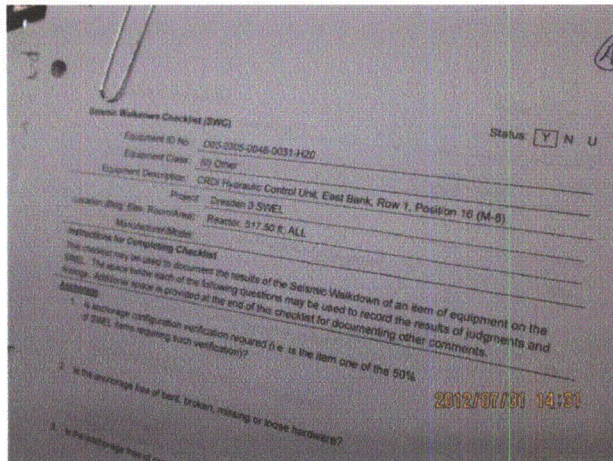
### Seismic Walkdown Checklist (SWC)

Equipment ID No.: D03-0305-0046-0031-H20

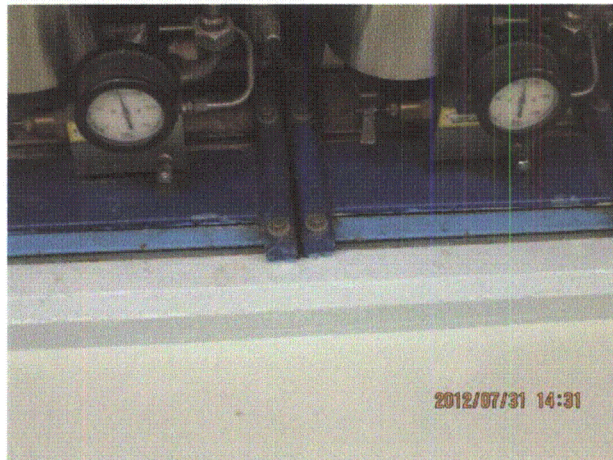
Equipment Class: (0) Other

Equipment Description: CRD/ Hydraulic Control Unit, East Bank, Row 1, Position 16 (M-8)

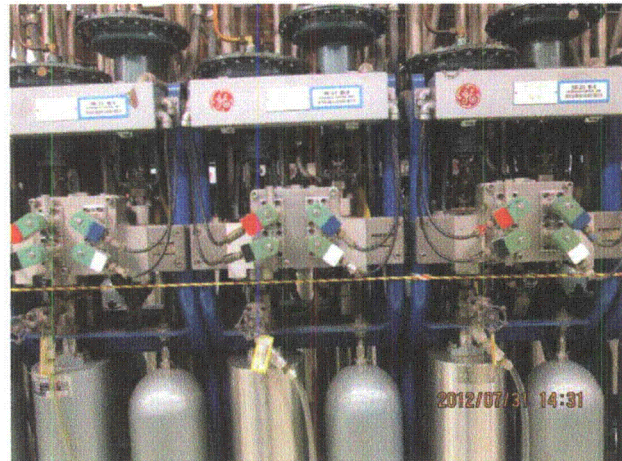
#### Photos



20120731-Dresden-3 396



20120731-Dresden-3 398



20120731-Dresden-3 397



20120731-Dresden-3 399



Status: ☒ Y ☐ N ☐ U

**Seismic Walkdown Checklist (SWC)**

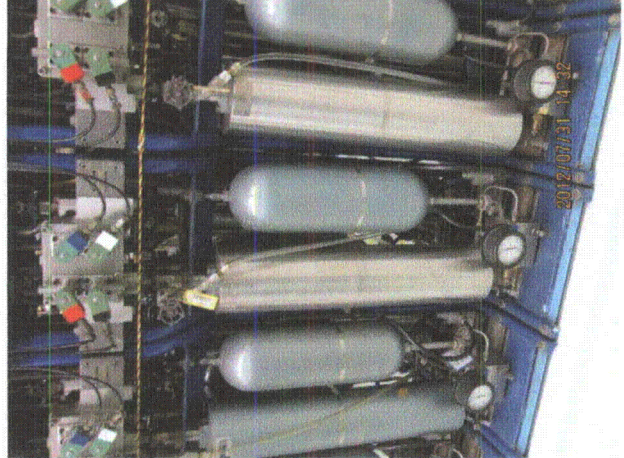
Equipment ID No.: D03-0305-0046-0031-H20

Equipment Class: (0) Other

Equipment Description: CRD/ Hydraulic Control Unit, East Bank, Row 1, Position 16 (M-8)



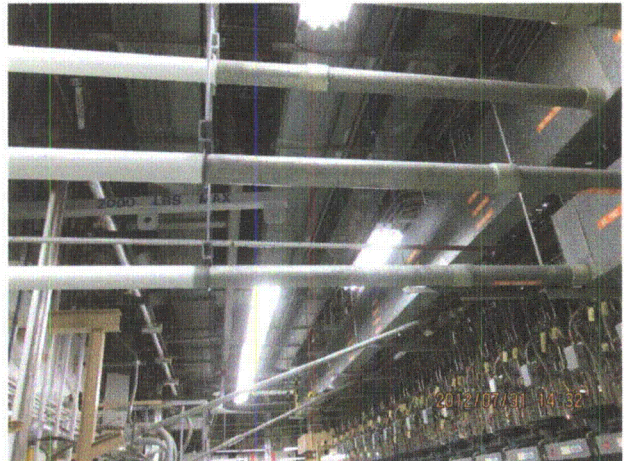
20120731-Dresden-3 400



20120731-Dresden-3 401



20120731-Dresden-3 402



20120731-Dresden-3 403



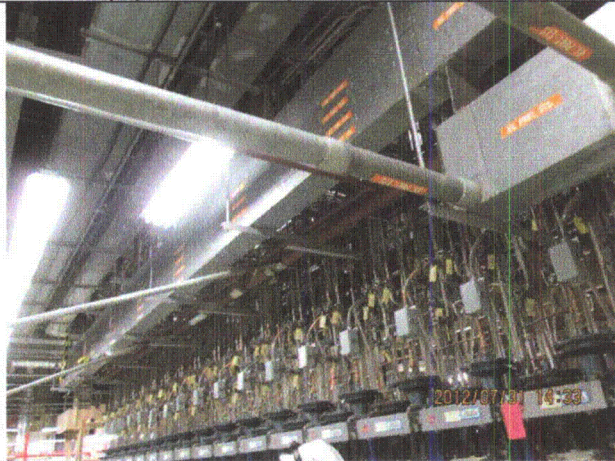
Status: ☒ Y ☐ N ☐ U

**Seismic Walkdown Checklist (SWC)**

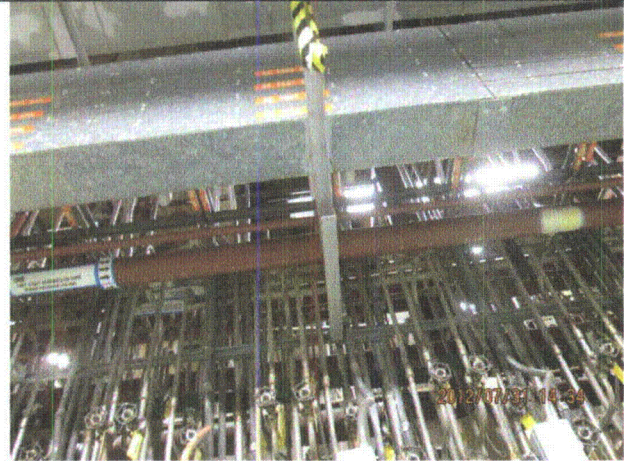
Equipment ID No.: D03-0305-0046-0031-H20

Equipment Class: (0) Other

Equipment Description: CRD/ Hydraulic Control Unit, East Bank, Row 1, Position 16 (M-8)



20120731-Dresden-3 404



20120731-Dresden-3 405