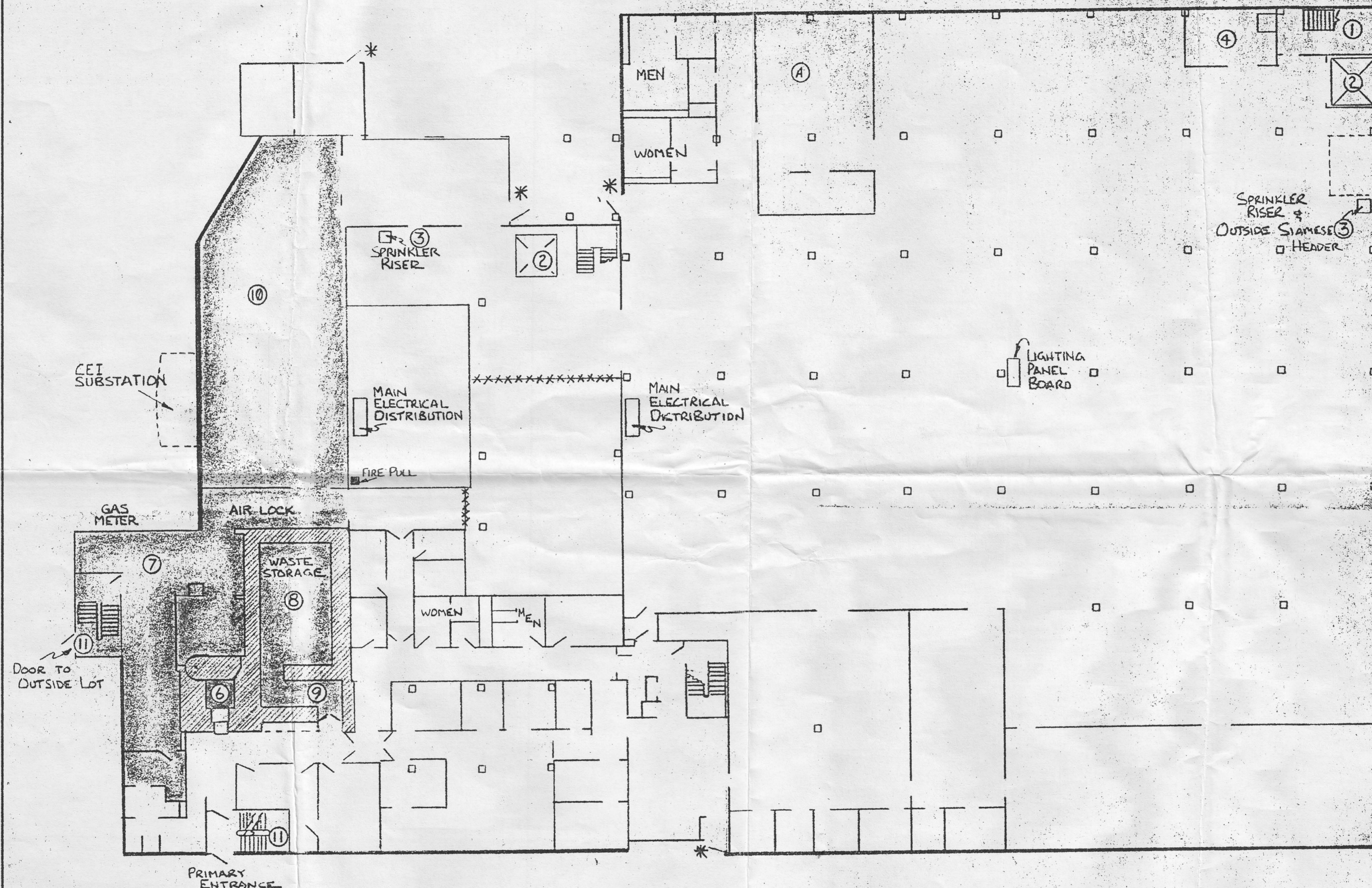


C-A9-P-0063

- ① STAIRWELL TO ROOF
- ② NON-OPERATIONAL ELEVATORS
- ③ SPRINKLER RISER
- ④ BOILER ROOM FUEL: NAT. GAS
- ⑤ SHADED AREAS - RESTRICTED
- ⑥ HOT CELL - HIGH RADIATION & CONTAMINATION AREA
- ⑦ ISOTOPE SHOP - RADIATION AREA & CONTAMINATION PRESENT
- ⑧ WASTE STORAGE - HIGH RADIATION AREA STORAGE OF RADIOACTIVE WASTE PRIOR TO SHIPMENT.
- ⑨ DEPLETED URANIUM STORAGE AREA
- ⑩ WAREHOUSE - RADIATION AREA. STORAGE & STAGING AREA FOR SEALED SOURCES IN SHIPPING PACKAGES.
- ⑪ STAIRWELLS TO BASEMENT - RESTRICTED AREAS DUE TO RADIATION & CONTAMINATION. RADIOACTIVE WASTE - WASTE STORAGE AREA. NO FLAMMABLE MATERIALS.



← LONDON ROAD →

* = SECONDARY EXIT/ENTRANCES FOR EMERGENCY USE

01092X

UNLESS NOTED • TOLERANCES ON ANGLES ±		□ BREAK ALL SHARP EDGES	
DECIMALS ±		DIMENSIONS ARE BEFORE APPLYING FINISH	
NEXT ASSY	QTY	NAME	DATE
		LONDON ROAD 1ST FLOOR PRE-EMERGENCY	
		PLAN	
		MATERIAL	
		FINISH	
DRN	DATE	CHKD	APPRVD
W. C. BARTON	8/20/85	H. E. I.	E. S. V. 8-20-85
A. REMOVED AREA 12'		DATE	SCALE 1/8" = 1'-0"
TR	REVISION	DATE	C-A9-P 7063

ADVANCED MEDICAL SYSTEMS, INC.
GE 7A OHIO 44041