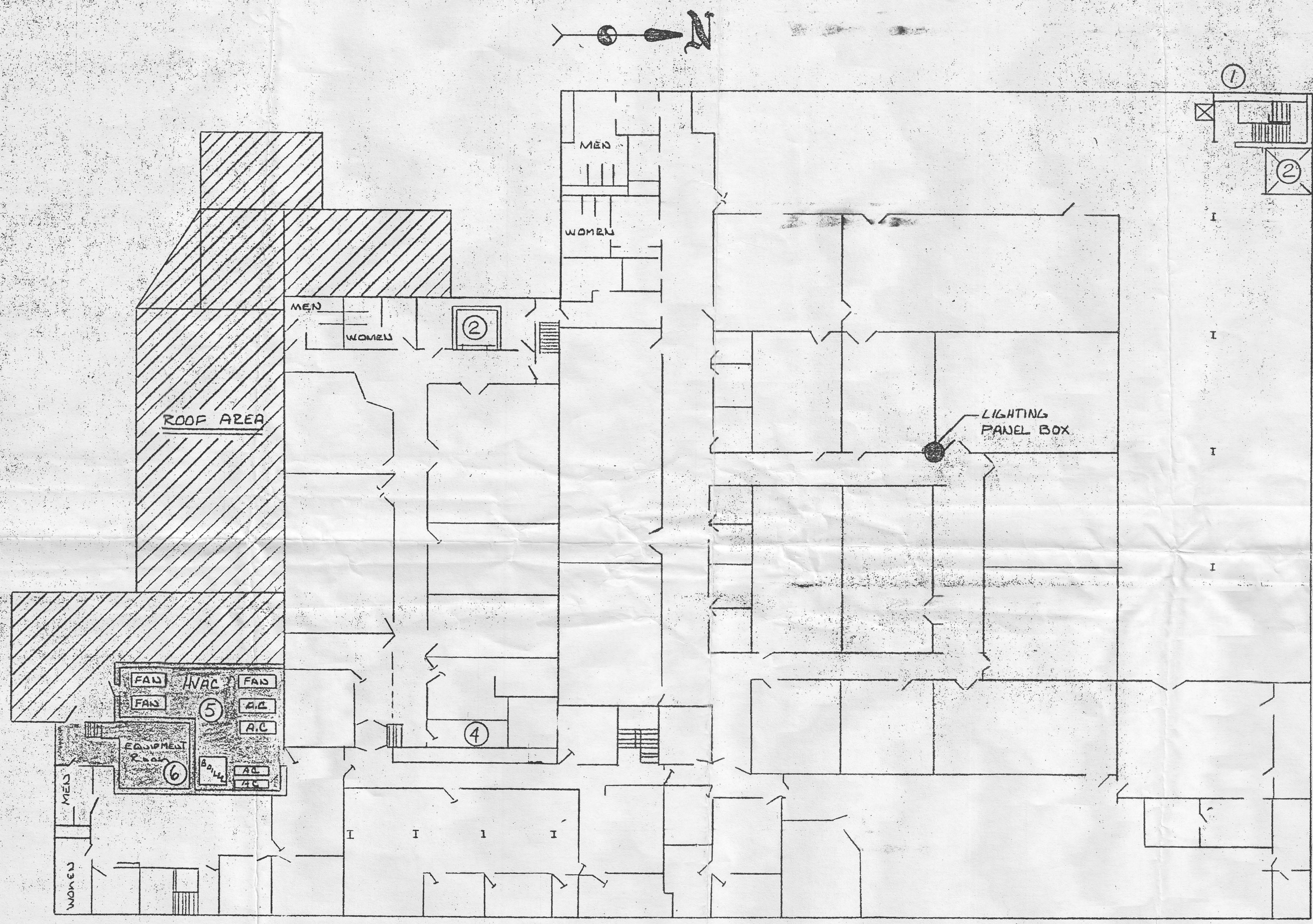


C-A9-P-0062

NOTES

1. STAIRS TO ROOF
2. NON-OPERATIONAL ELEVATORS
3. SHADED AREA - RESTRICTED -
4. CONTROL WIRE PANELS FOR RESTRICTED AREAS
5. RESTRICTED MOD-ISOTOPE AREA. HVAC EQUIPMENT CONTROLS FOR RESTRICTED AREAS.
FUEL = NATURAL GAS
POWER = 480 VOLT 3Ø
6. HOT CELL VENTILATION EQUIPMENT ROOM
- HIGH RADIATION AREA
- RADIOACTIVE MATERIAL PRESENT
PROTECTIVE CLOTHING & RESPIRATORS NECESSARY
- ROOF ACCESS DOOR
DEAD-BOLTED ON INSIDE
- SLIGHT RADIATION EXPOSURE HAZARD FROM ADJACENT ROOM #6



LONDON ROAD

UNLESS NOTED • TOLERANCES ON ANGLES ±		□ BREAK ALL SHARP EDGES	
DECIMALS ±		• FRACTIONS ±	
DIMENSIONS ARE BEFORE APPLYING FINISH			
NEXT ASSY	QTY	NAME	DATE
		LONDON ROAD 2ND FLOOR	
		PRE EMERGENCY PLAN	
		MATERIAL	
		FINISH	
DRN	E. SVILEL	DATE	CHKD. HRI
		APPRVD	E. SVILEL
		SCALE	1/4" = 1'-0"
			C-A9-P-0062

ADVANCED MEDICAL SYSTEMS, INC.
GT VA, OHIO 44041

BRUNING 40-105 47977-1

01001