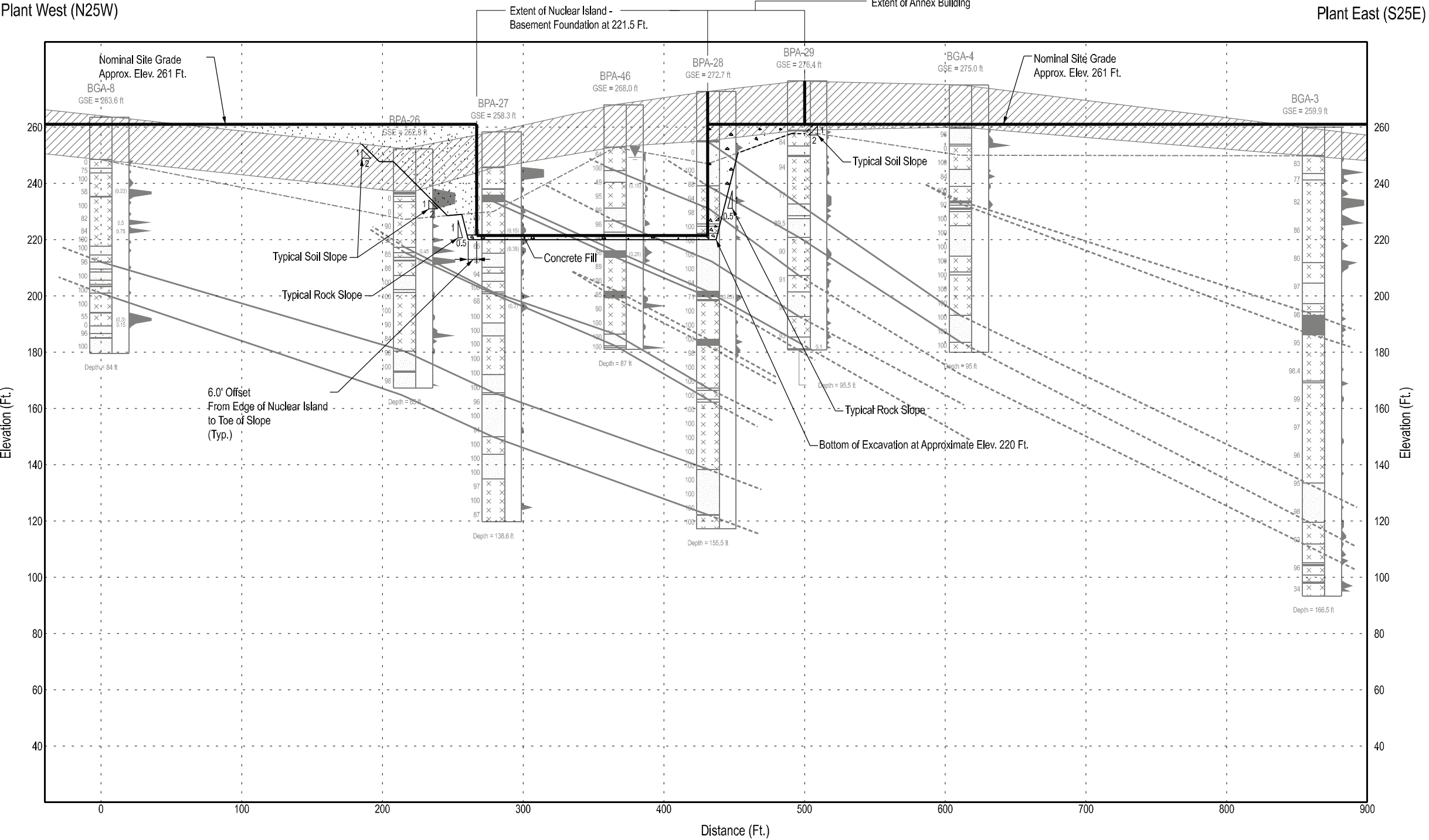


Plant West (N25W)



**LEGEND**

- Extent of Excavation For Safety-Related Structures
- Conceptual Excavation Extent For Other Related Structures
- Concrete Fill
- Compacted Granular Fill, Compacted Cohesive Fill, or Concrete Fil
- Ground Water Level

**NOTES:**

- Clay seams or fracture zones with total clay thickness >0.1 ft. thick are shown at their approximate observed elevation.
- See Table 2.5.4-201 for depths and descriptions of soil and top of sound rock.
- See Figure 2.5.4-202 for Cross-Section locations.
- Depth of excavation under non safety related structures shown as conceptual and subject to change during detailed design.
- Excavation extents for nuclear island shown are typical and subject to change based on subsurface conditions encountered during construction. Soil excavation sideslope may range from 1.5H:1V to 2H:1V, and rock excavation sideslope may range from 0.25H:1V to 0.5H:1V.
- See Figure 2.5.4-205B for lithology symbols and correlation lines between boreholes.

**DATA SOURCE:**

- CH2M HILL Borehole (Appendix 2BB)