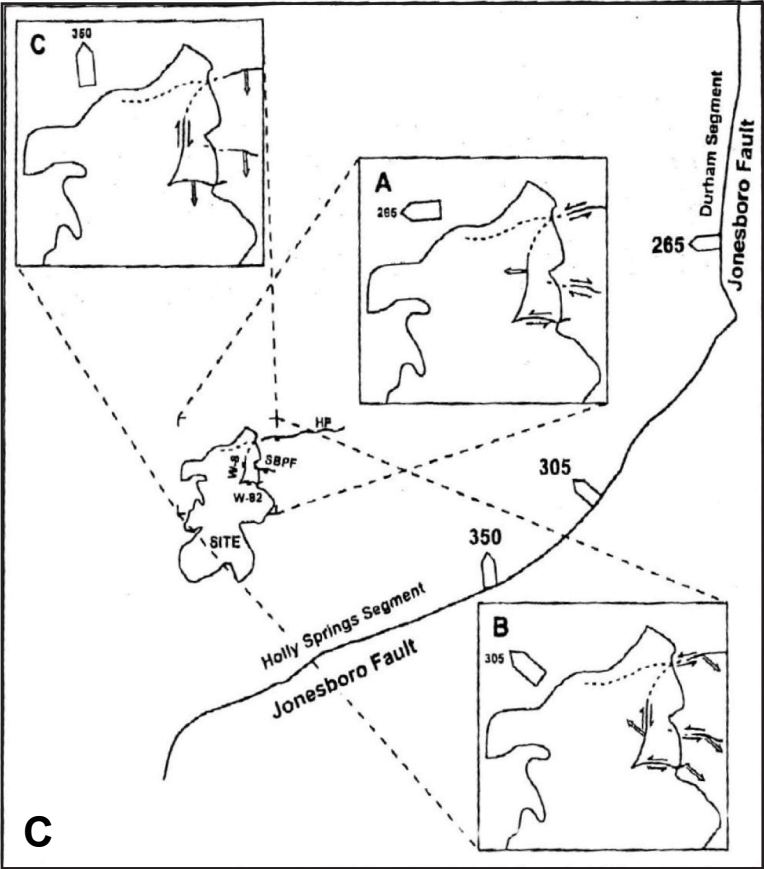


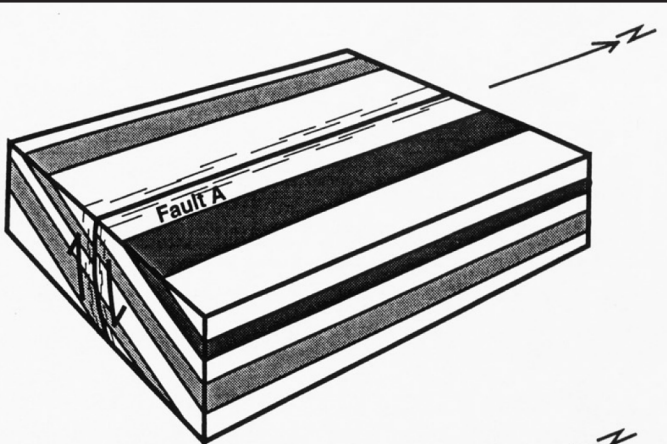
Source: Wooten et al. (2001)



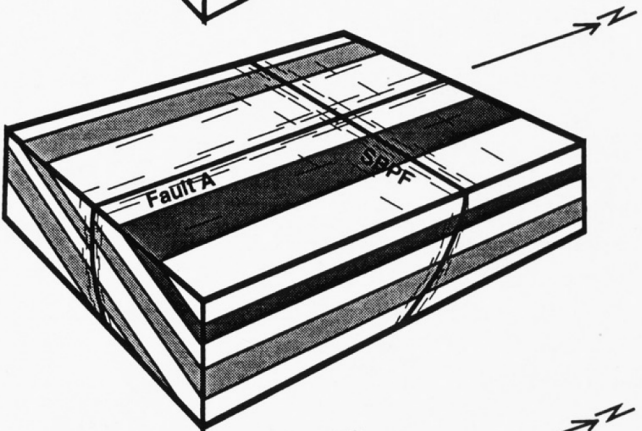
Source: Wooten et al. (2001)

**B**

- Stage 1:**
- Longitudinal basin faulting (Fault A)
  - Tilting of beds
  - Formation of north-striking, opening-mode fractures.

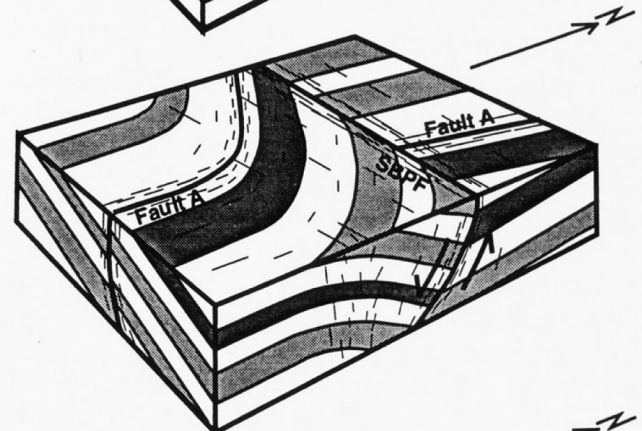


- Stage 2:**
- Transverse basin faulting
  - Initial formation of south borrow pit fault (SBPF).
  - East-striking, opening mode fractures



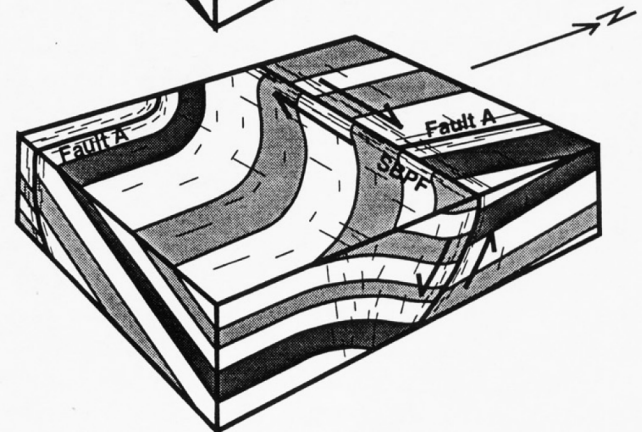
- Stage 2A:**
- Normal faulting
  - Formation of map-scale, hanging wall anticline.
  - East-striking, opening mode fractures.

Stages 2A and 2B may be coeval.



- Stage 2B:**
- Continued movement along SBPF.
  - Dextral, strike-slip faulting;
  - Formation of outcrop-scale, hanging wall syncline.
  - East- and north-striking shearing mode fractures.

Stages 2A and 2B may be coeval.



Schematic diagram showing a possible kinematic model for the south borrow pit fault and associate structures.

Source: Wooten et al. (1996)

Progress Energy Carolinas  
**Shearon Harris Nuclear Power Plant  
Units 2 and 3  
Part 2, Final Safety Analysis Report**  
New Hill, North Carolina

Schematic Block Diagram and  
Map Showing Structural Relations  
for Faults in the Site Area  
FIGURE 2.5.1-236