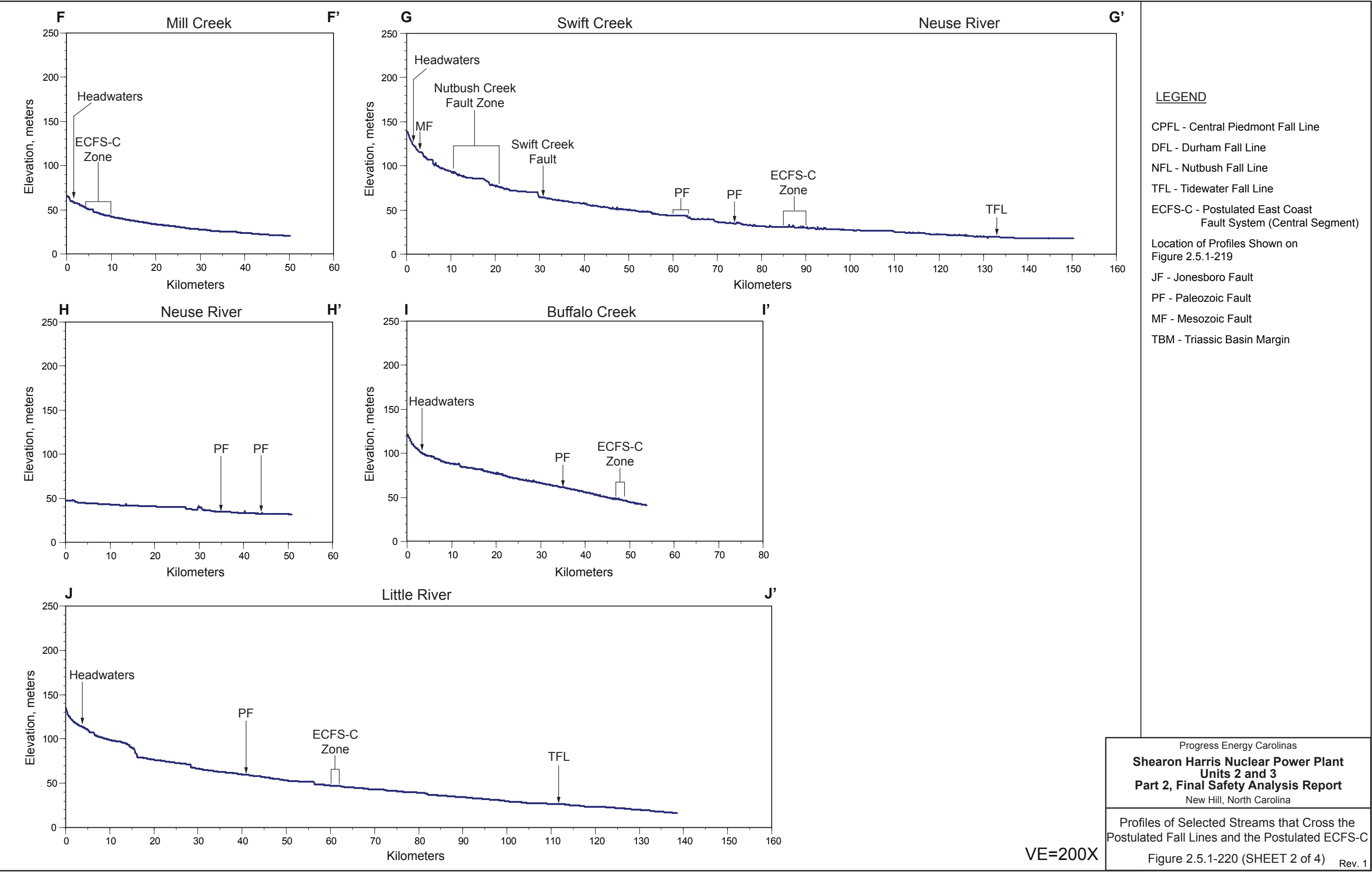


LEGEND

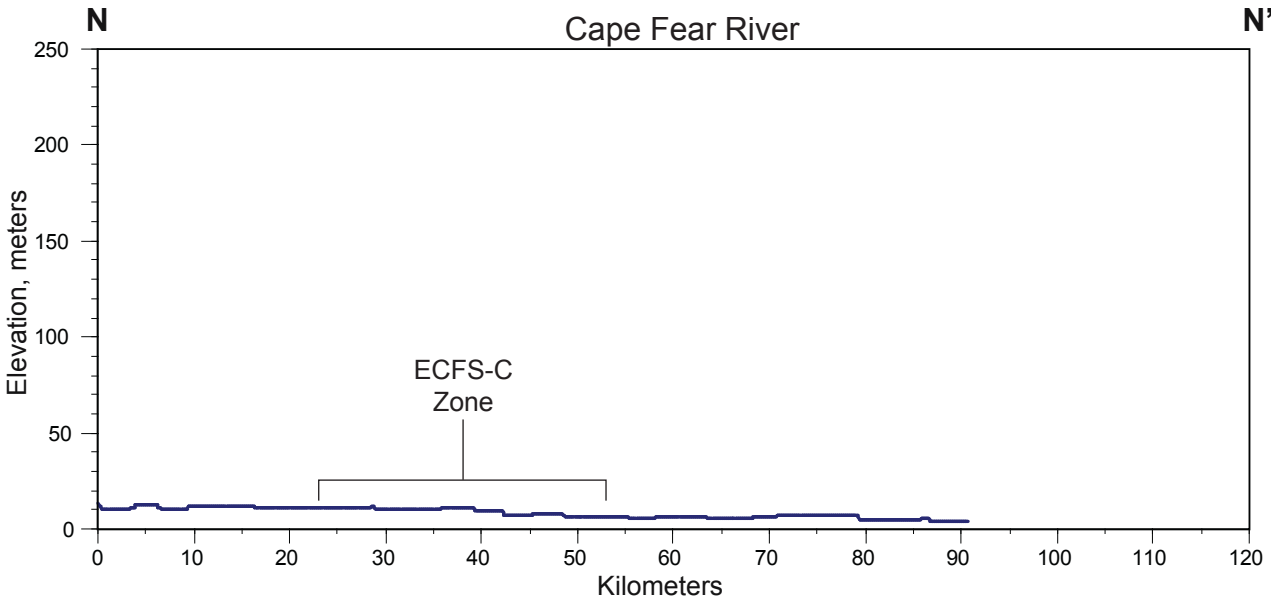
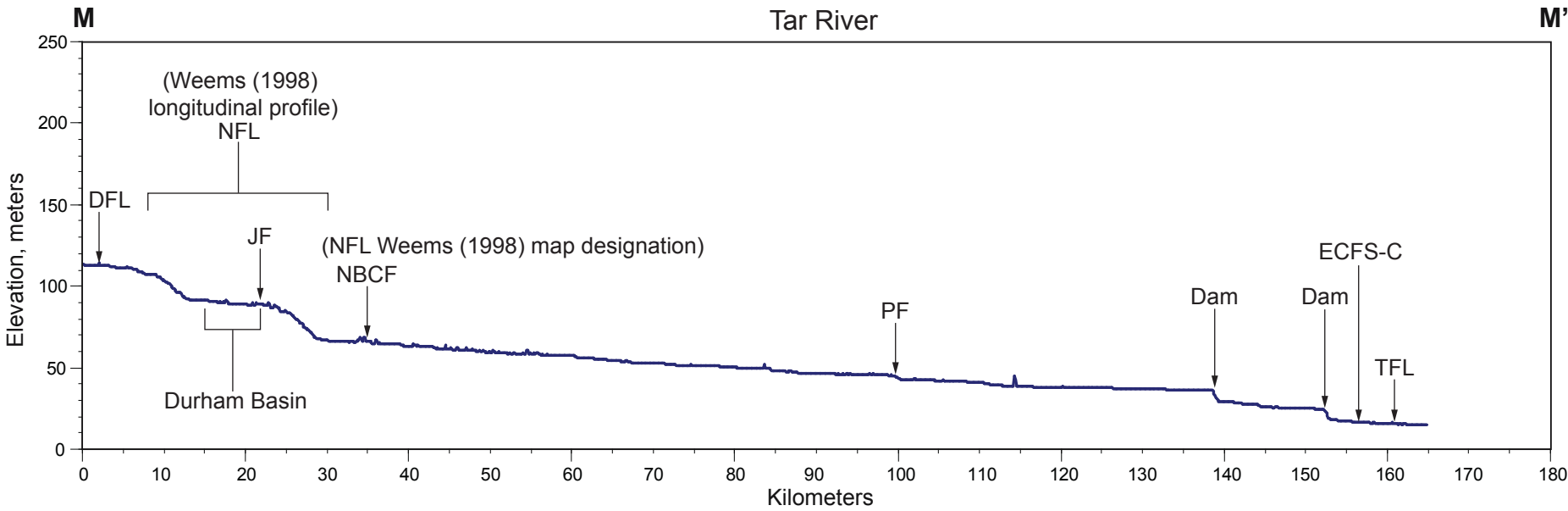
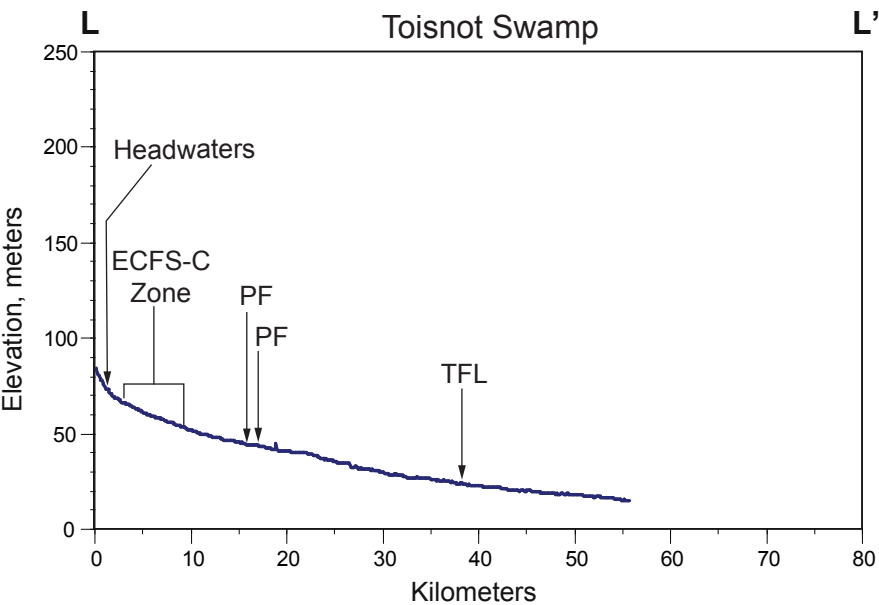
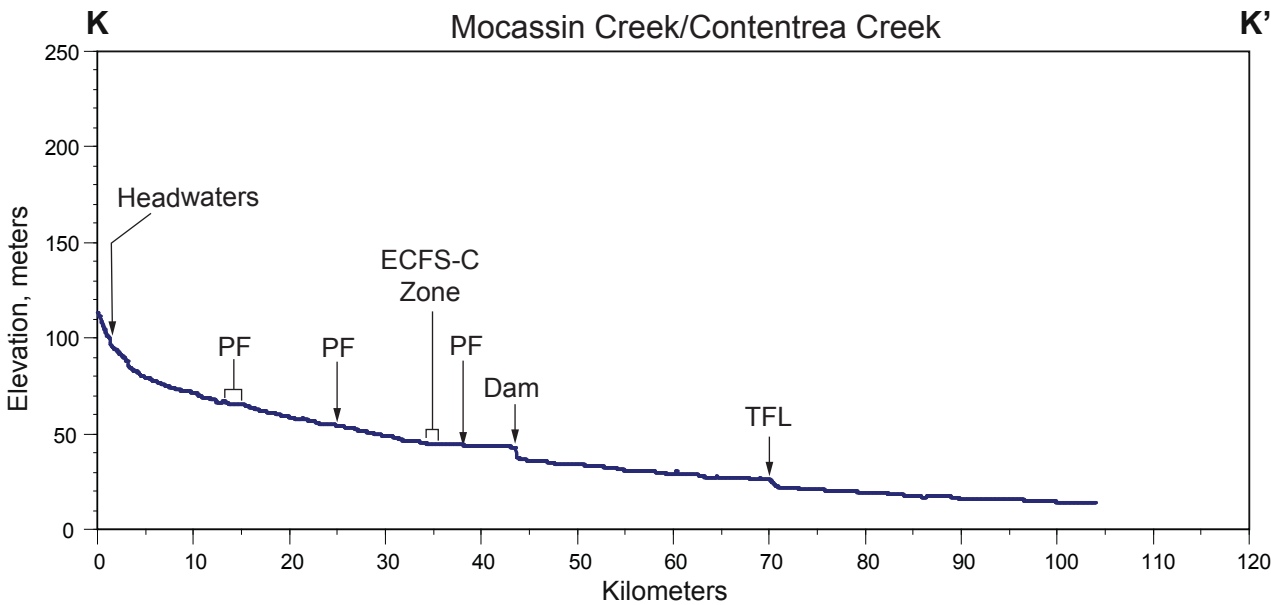
CPFL - Central Piedmont Fall Line
DFL - Durham Fall Line
NFL - Nutbush Fall Line
TFL - Tidewater Fall Line
ECFS-C - Postulated East Coast Fault System (Central Segment)

Location of Profiles Shown on Figure 2.5.1-219

JF - Jonesboro Fault
PF - Paleozoic Fault
MF - Mesozoic Fault
TBM - Triassic Basin Margin



VE=200X



LEGEND

CPFL - Central Piedmont Fall Line
DFL - Durham Fall Line
NFL - Nutbush Fall Line
TFL - Tidewater Fall Line
ECFS-C - Postulated East Coast Fault System (Central Segment)

Location of Profiles Shown on Figure 2.5.1-219

JF - Jonesboro Fault
PF - Paleozoic Fault
MF - Mesozoic Fault
TBM - Triassic Basin Margin
NBCF - Nutbush Creek Fault

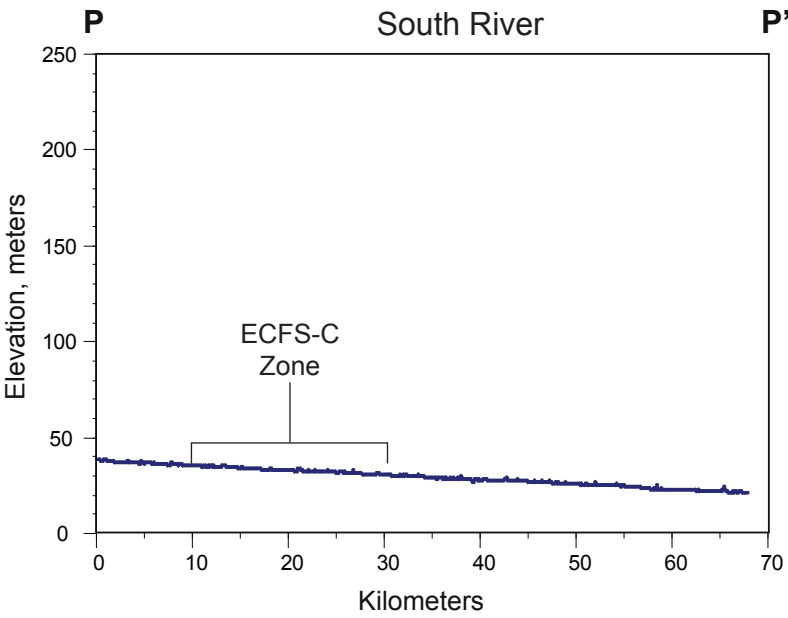
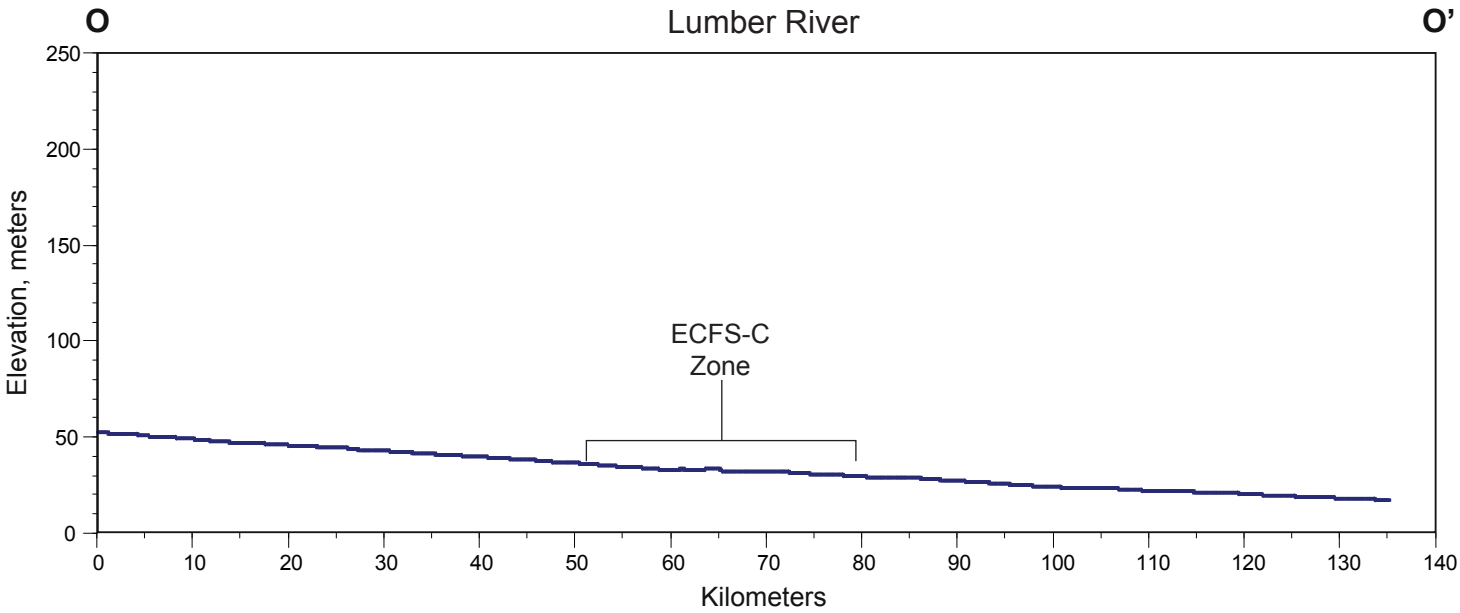
VE=200X

Progress Energy Carolinas

Shearon Harris Nuclear Power Plant
Units 2 and 3
Part 2, Final Safety Analysis Report
New Hill, North Carolina

Profiles of Selected Streams that Cross the Postulated Fall Lines and the Postulated ECFS-C

Figure 2.5.1-220 (SHEET 3 of 4) Rev. 1



- LEGEND
- CPFL - Central Piedmont Fall Line
 - DFL - Durham Fall Line
 - NFL - Nutbush Fall Line
 - TFL - Tidewater Fall Line
 - ECFS-C - Postulated East Coast Fault System (Central Segment)
 - Location of Profiles Shown on Figure 2.5.1-219
 - JF - Jonesboro Fault
 - PF - Paleozoic Fault
 - MF - Mesozoic Fault
 - TBM - Triassic Basin Margin

VE=200X