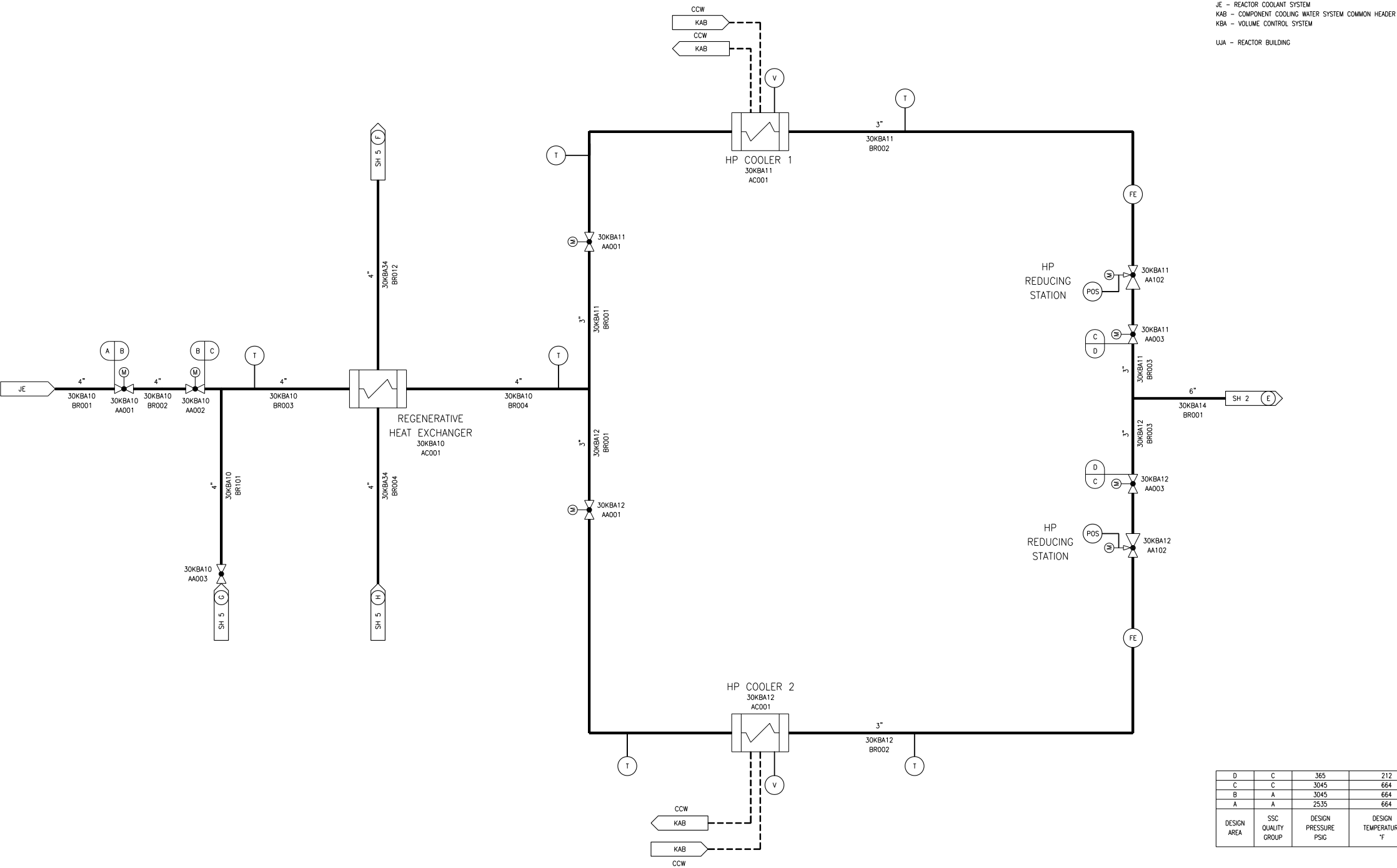
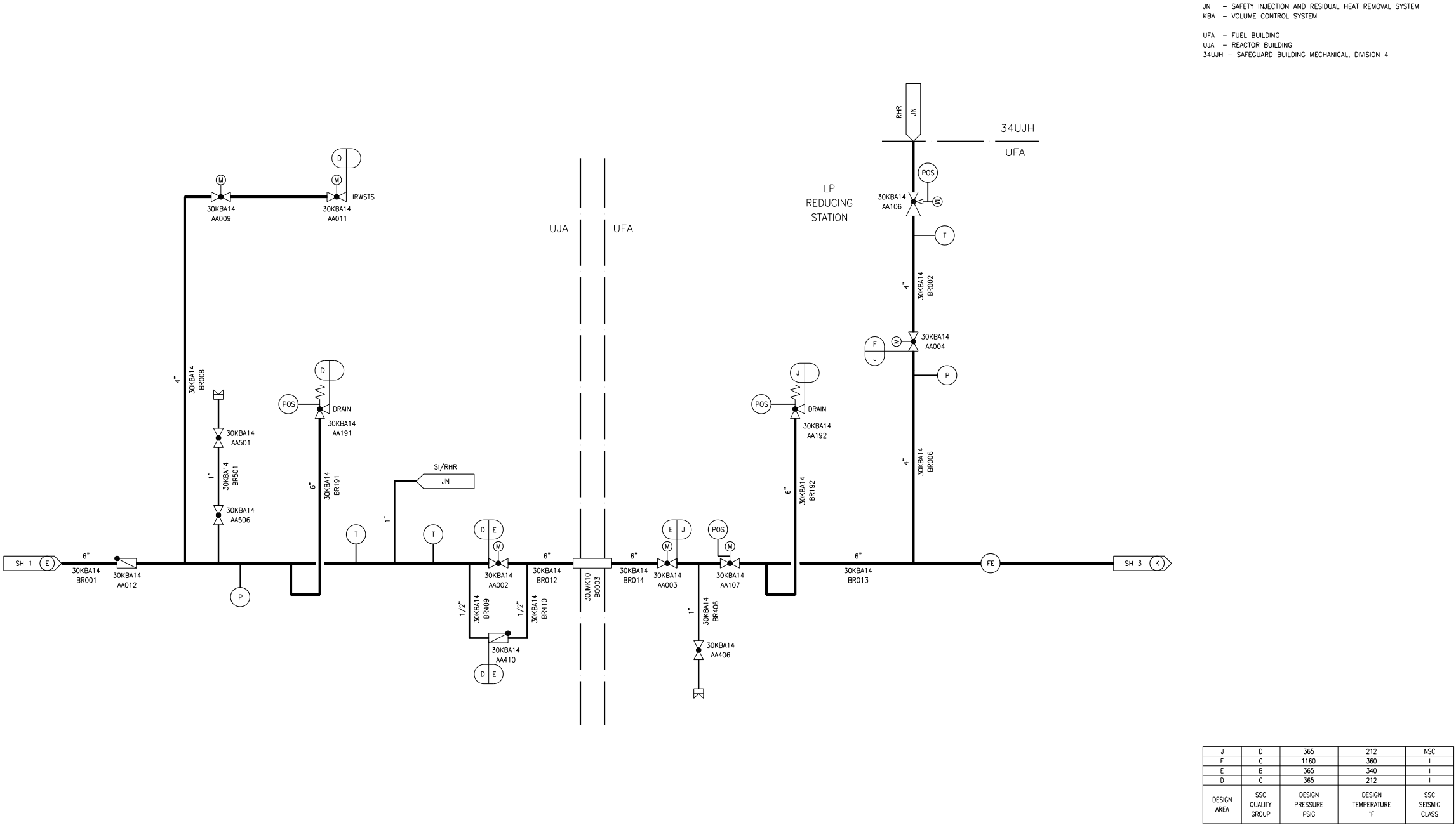


Figure 9.3.4-1—Chemical and Volume Control System
Sheet 1 of 9



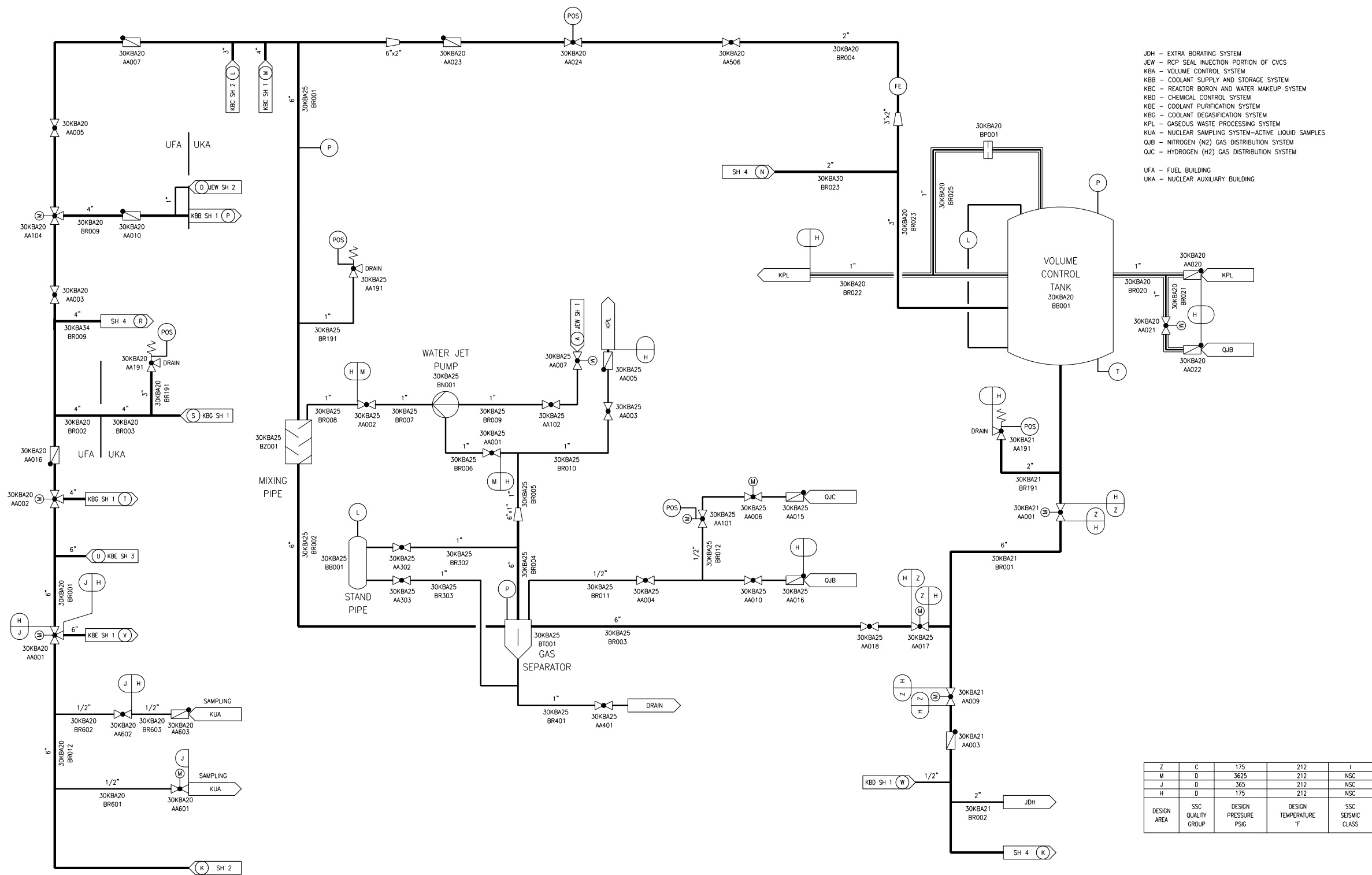
KBA01T2

Figure 9.3.4-1—Chemical and Volume Control System
Sheet 2 of 9



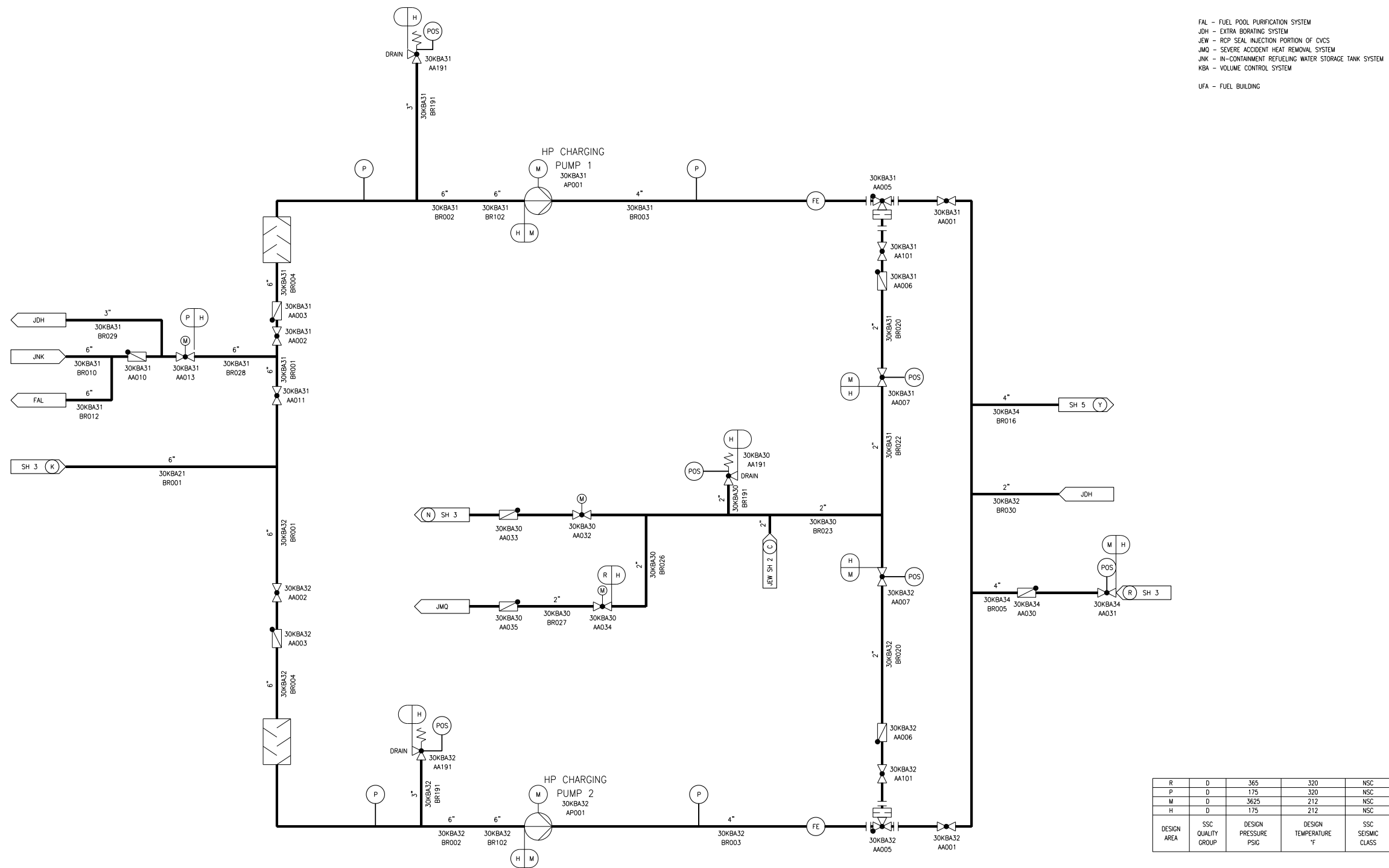
KBA02T2

Figure 9.3.4-1—Chemical and Volume Control System
Sheet 3 of 9



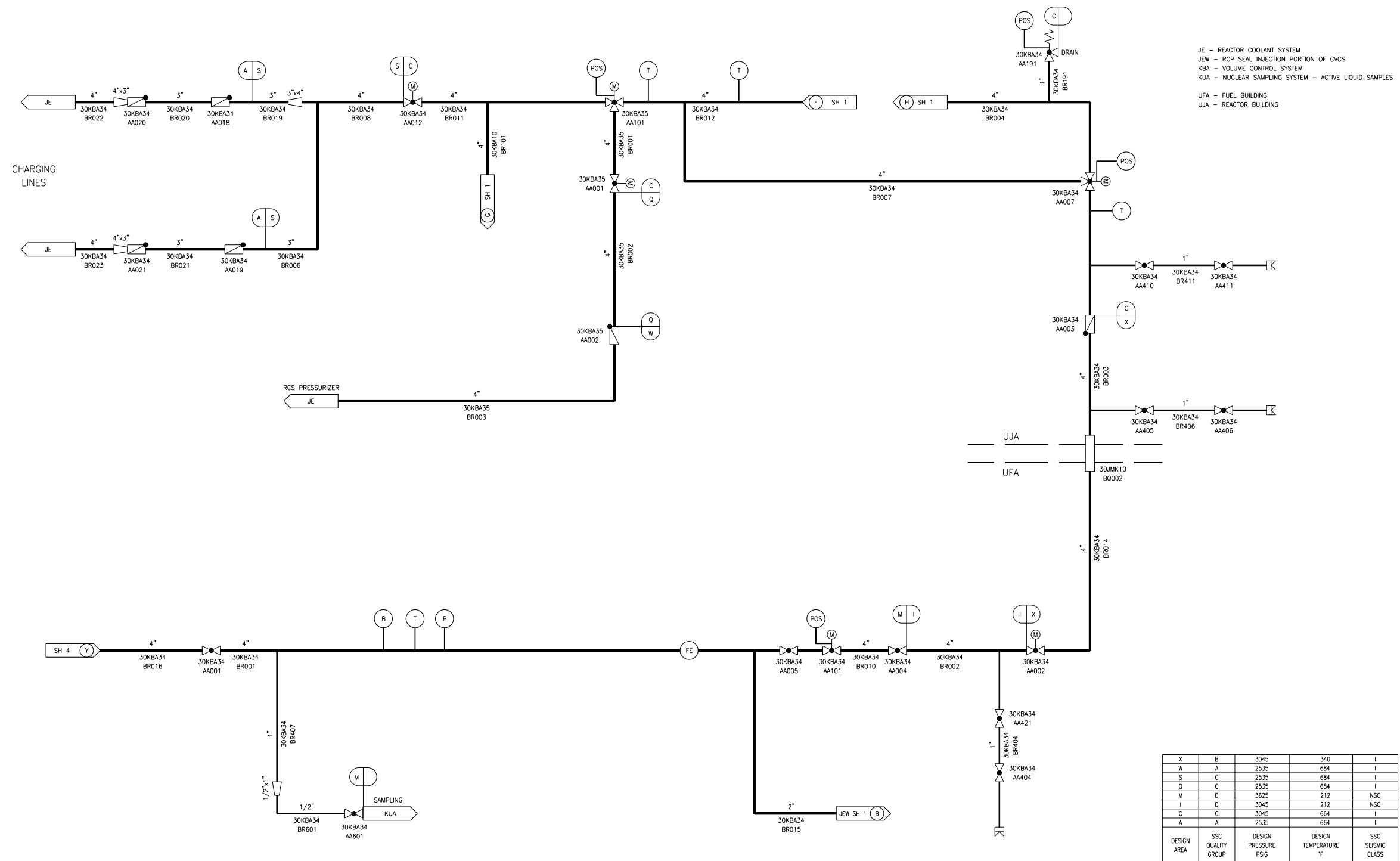
KBA03T2

Figure 9.3.4-1—Chemical and Volume Control System
Sheet 4 of 9



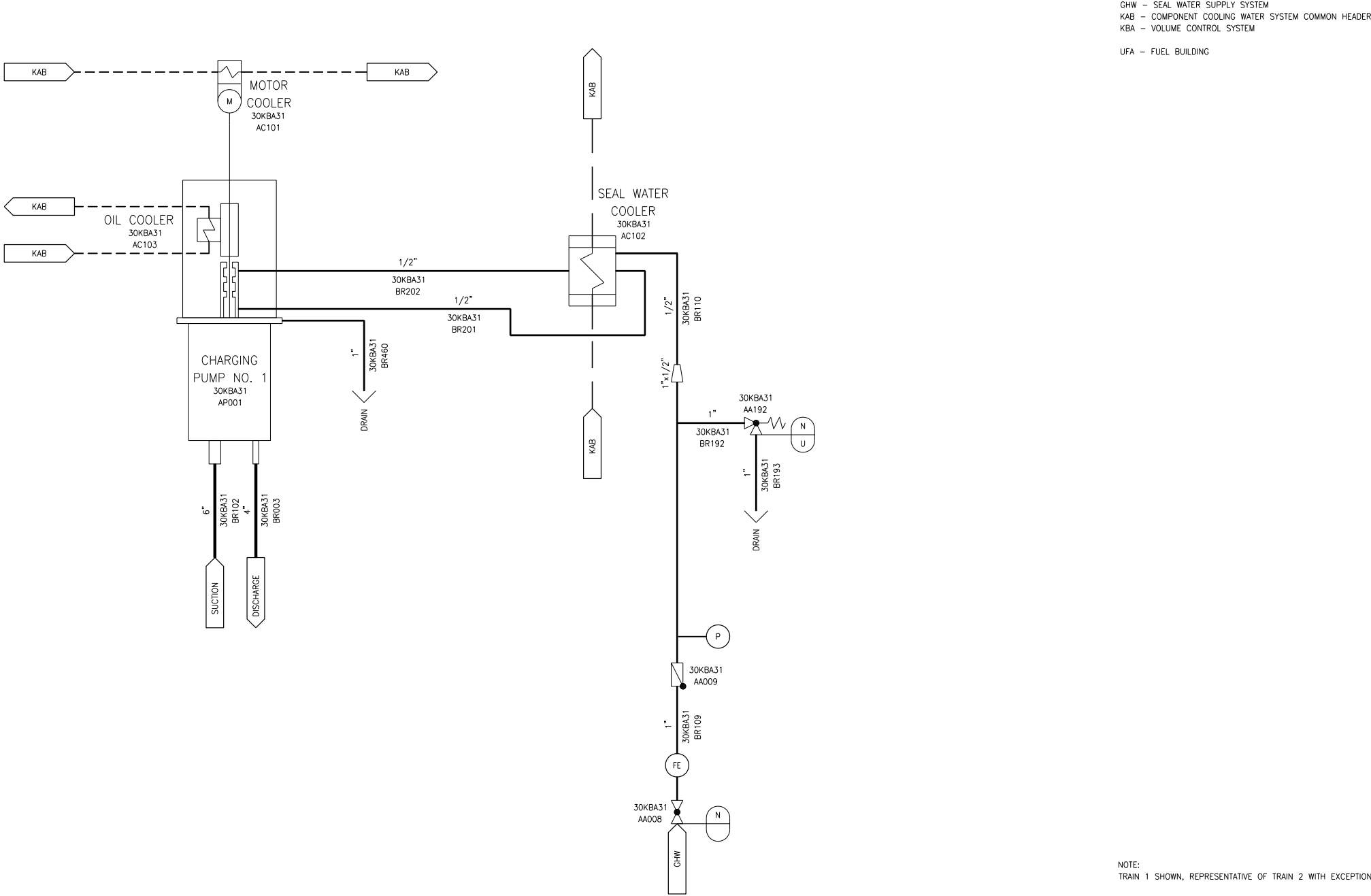
KBA04T2

Figure 9.3.4-1—Chemical and Volume Control System
Sheet 5 of 9



KBA05T2

Figure 9.3.4-1—Chemical and Volume Control System
Sheet 6 of 9

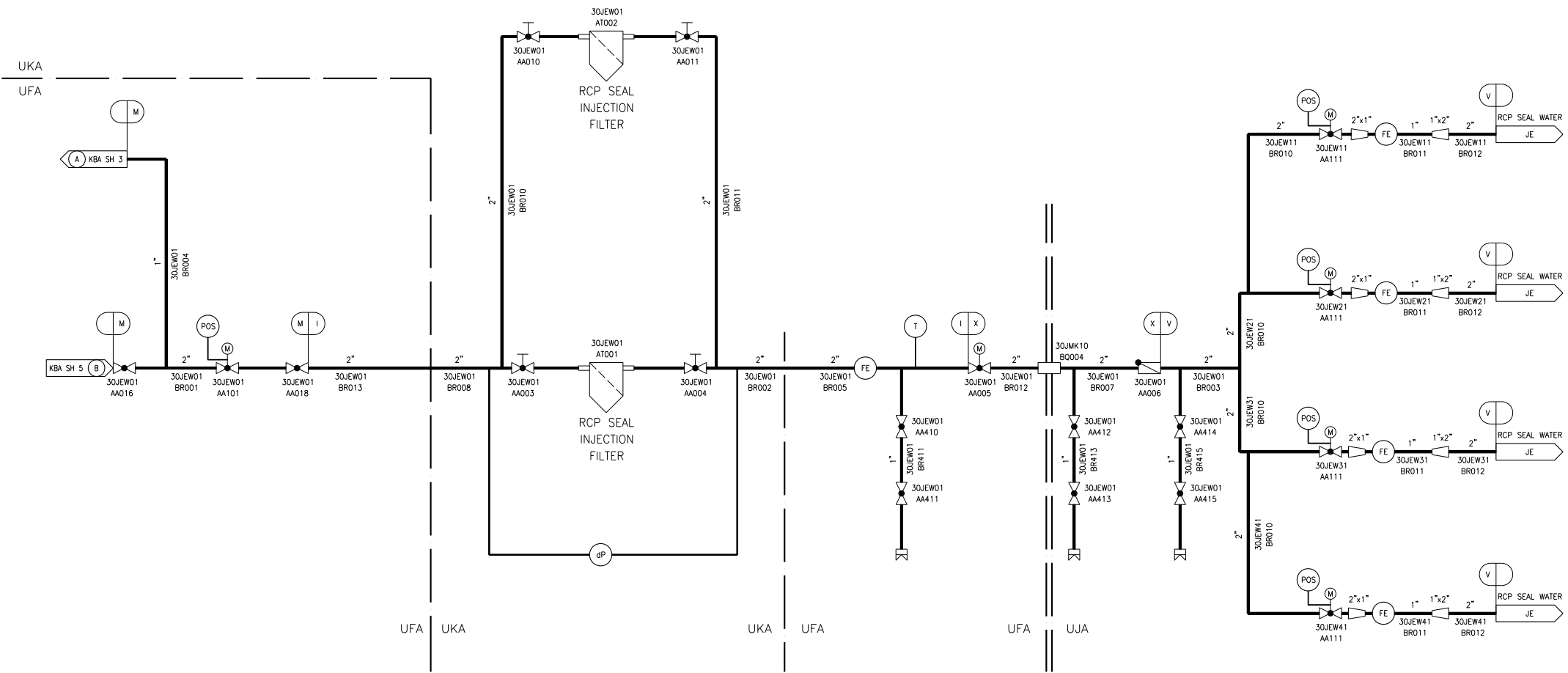


U	E	O	212	NSC
N	D	235	212	NSC
DESIGN AREA	SSC QUALITY GROUP	DESIGN PRESSURE PSIG	DESIGN TEMPERATURE °F	SSC SEISMIC CLASS

REV 001
KBA06T2

JE - REACTOR COOLANT SYSTEM
JEW - RCP SEAL INJECTION PORTION OF CVCS
KBA - VOLUME CONTROL SYSTEM

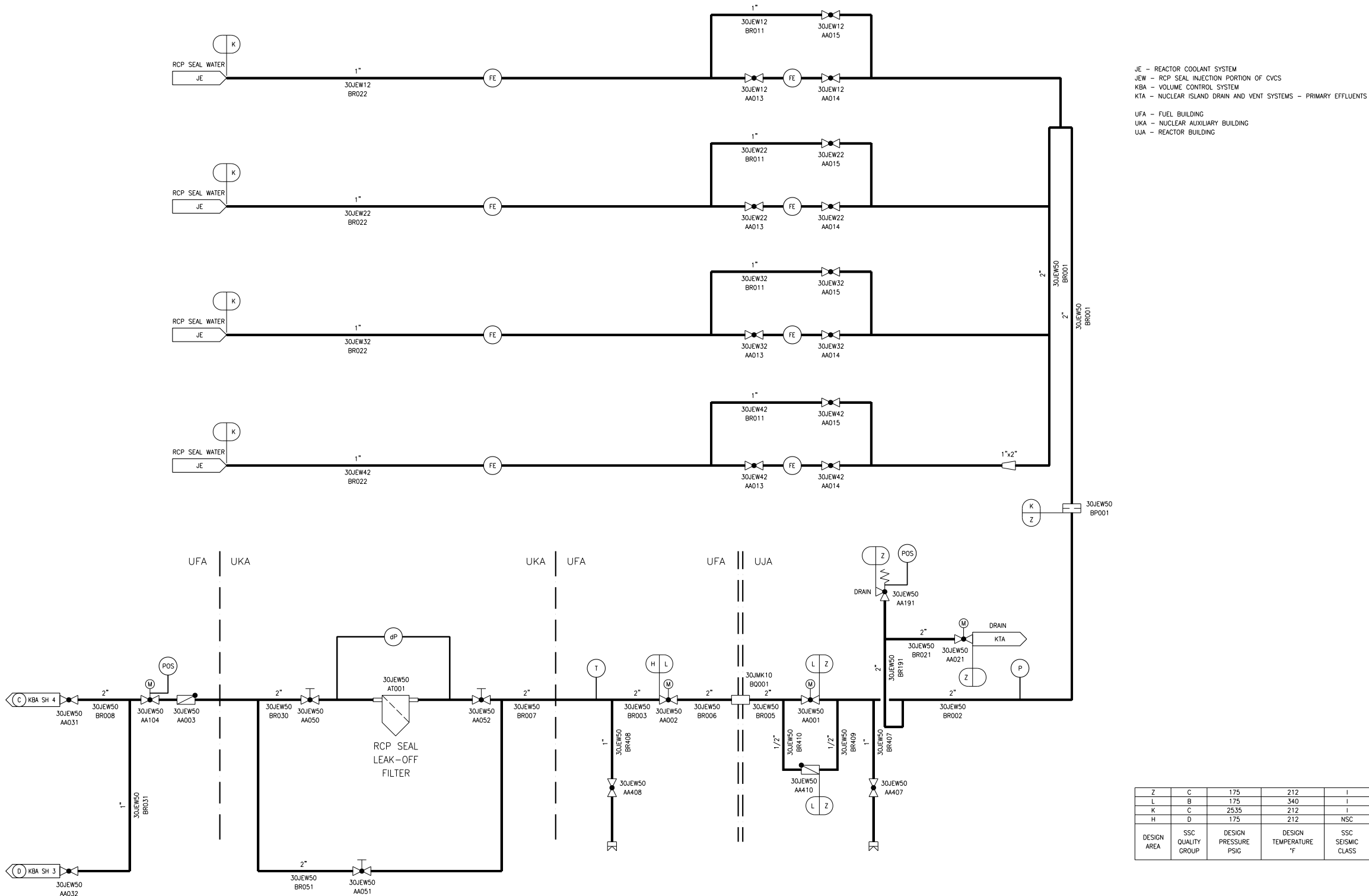
UFA - FUEL BUILDING
UKA - NUCLEAR AUXILIARY BUILDING
UJA - REACTOR BUILDING



X	B	3045	340	I
V	C	3045	212	I
M	D	3625	212	NSC
I	D	3045	212	NSC
DESIGN AREA	SSC QUALITY GROUP	DESIGN PRESSURE PSIG	DESIGN TEMPERATURE °F	SSC SEISMIC CLASS

JEW01T2

Figure 9.3.4-1—Chemical and Volume Control System
Sheet 8 of 9



JEW02T2

Figure 9.3.4-1—Chemical and Volume Control System
Sheet 9 of 9

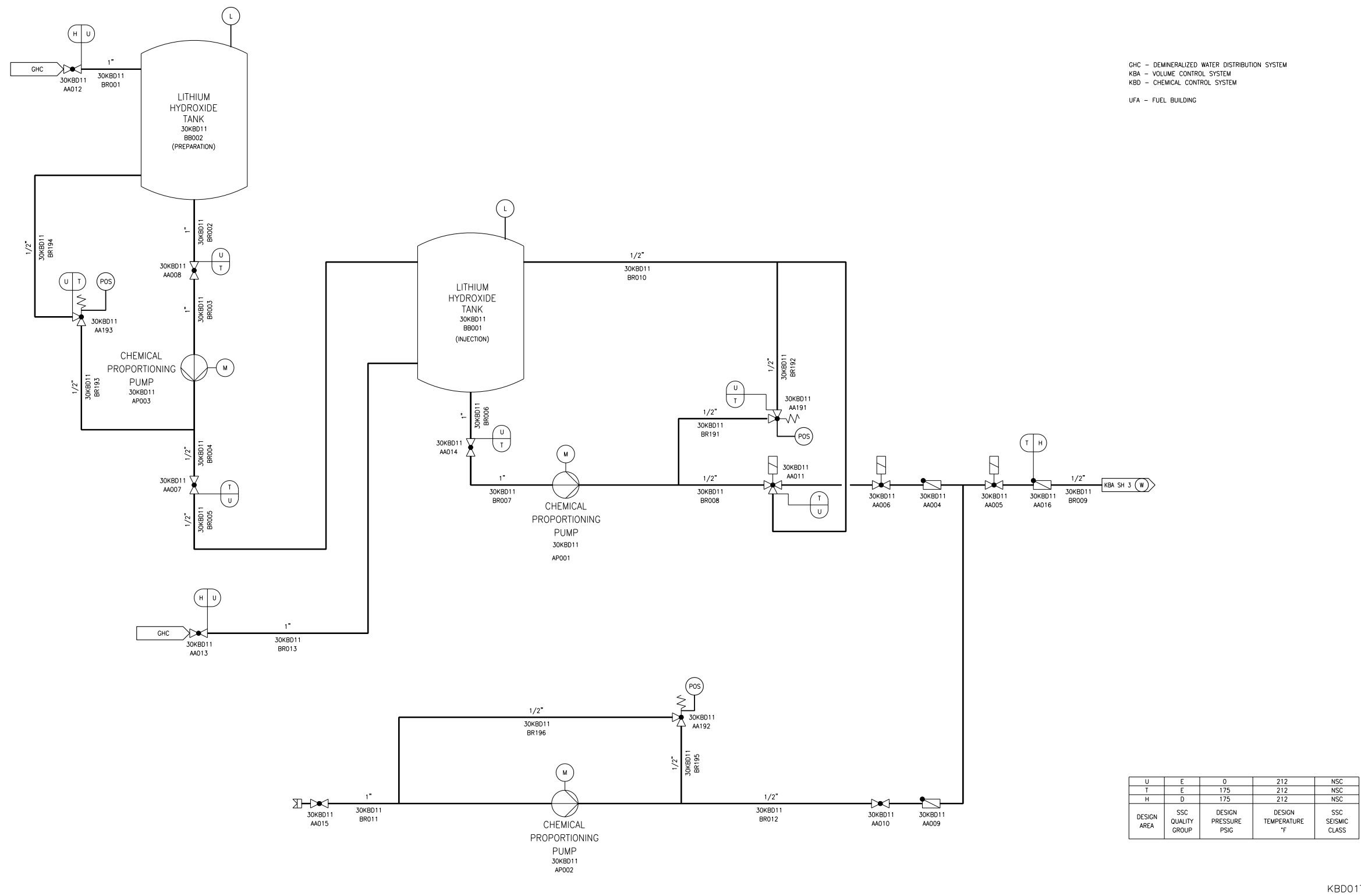
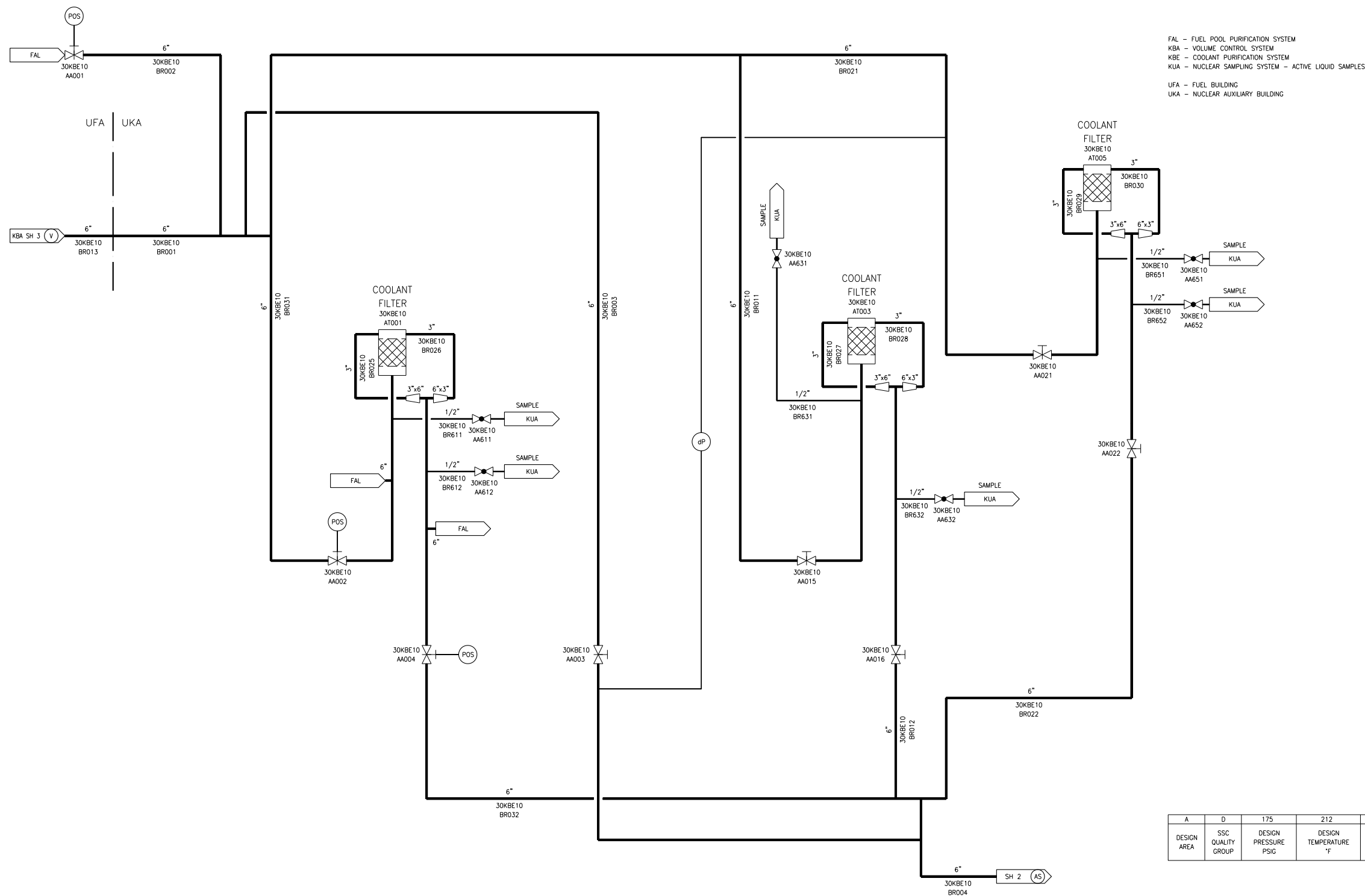
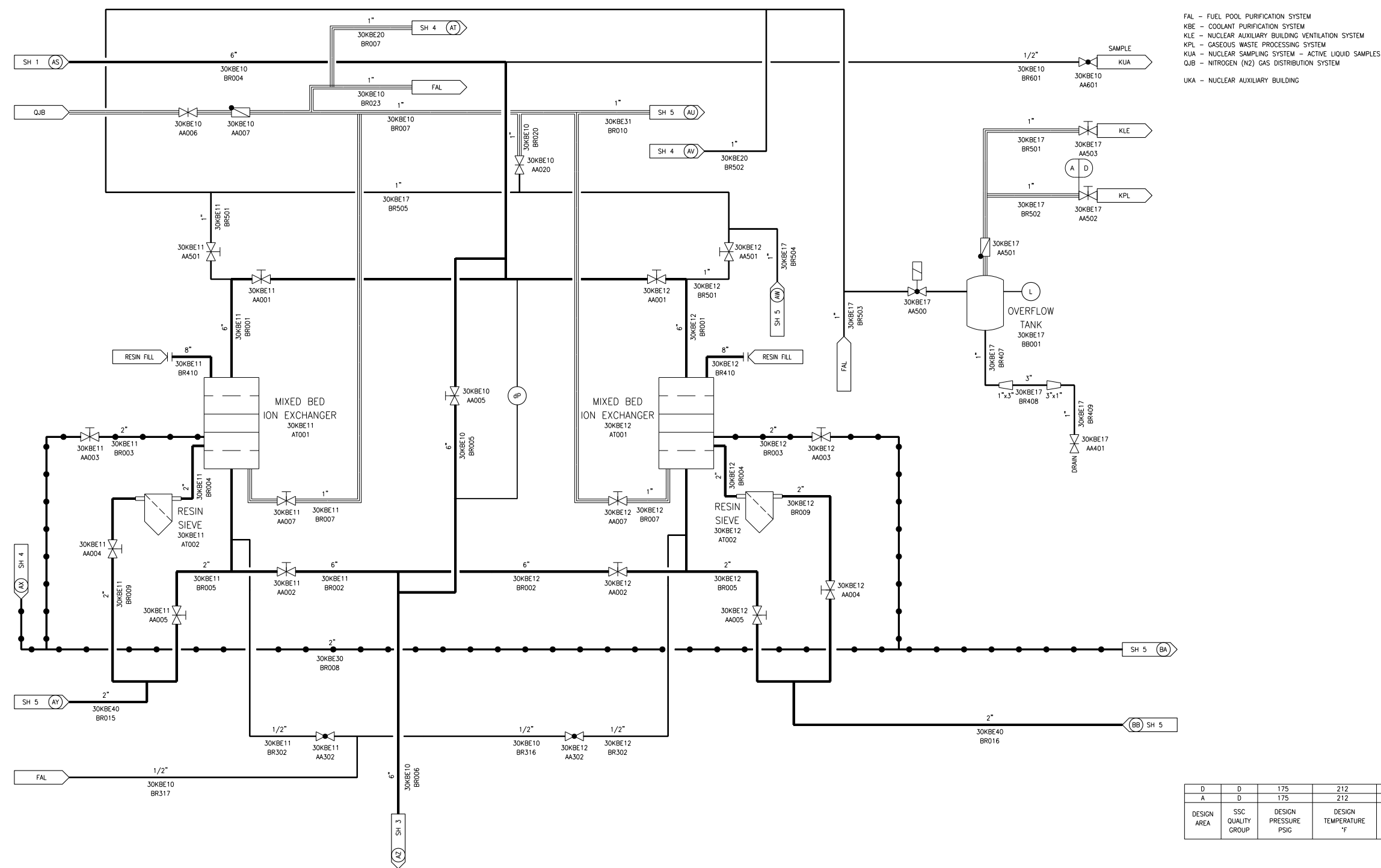


Figure 9.3.4-2—Coolant Purification System
Sheet 1 of 5



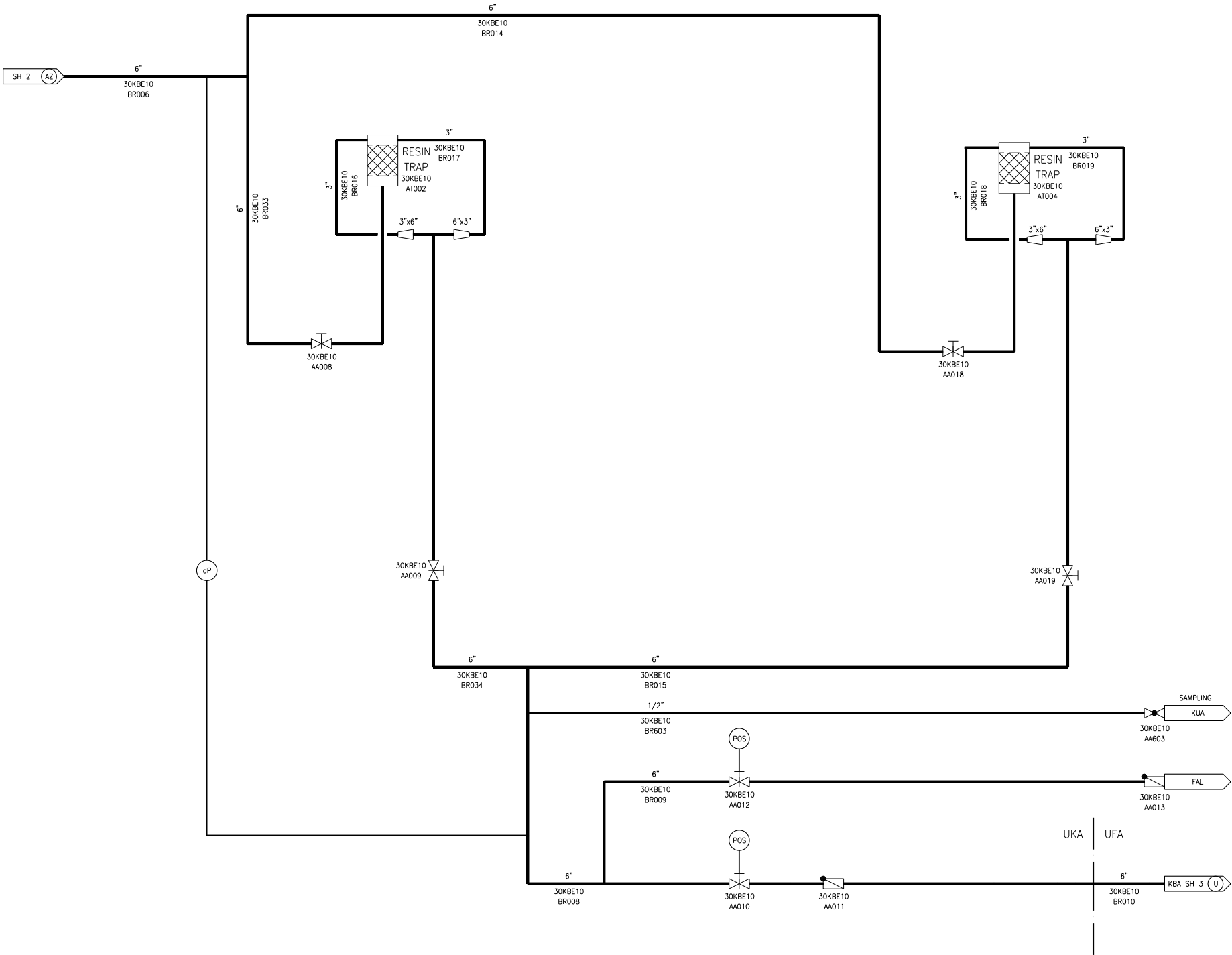
KBE01T2

Figure 9.3.4-2—Coolant Purification System
Sheet 2 of 5



REV 001
KBE02T2

Figure 9.3.4-2—Coolant Purification System
Sheet 3 of 5

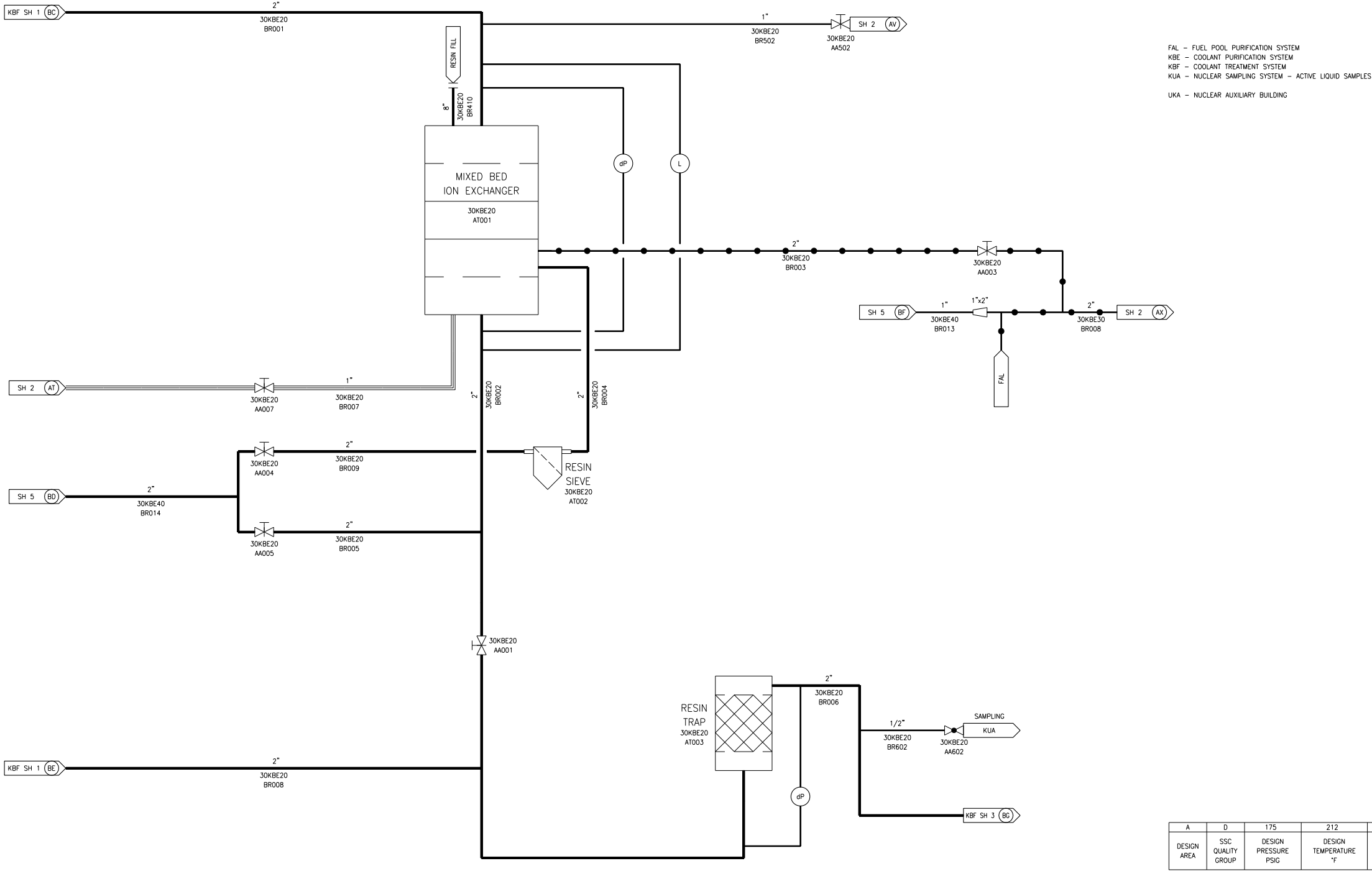


FAL - FUEL POOL PURIFICATION SYSTEM
KBA - VOLUME CONTROL SYSTEM
KBE - COOLANT PURIFICATION SYSTEM
KUA - NUCLEAR SAMPLING SYSTEM - ACTIVE LIQUID SAMPLES
UFA - FUEL BUILDING
UKA - NUCLEAR AUXILIARY BUILDING

A	D	175	212	NSC
DESIGN AREA	SSC QUALITY GROUP	DESIGN PRESSURE PSIG	DESIGN TEMPERATURE °F	SSC SEISMIC CLASS

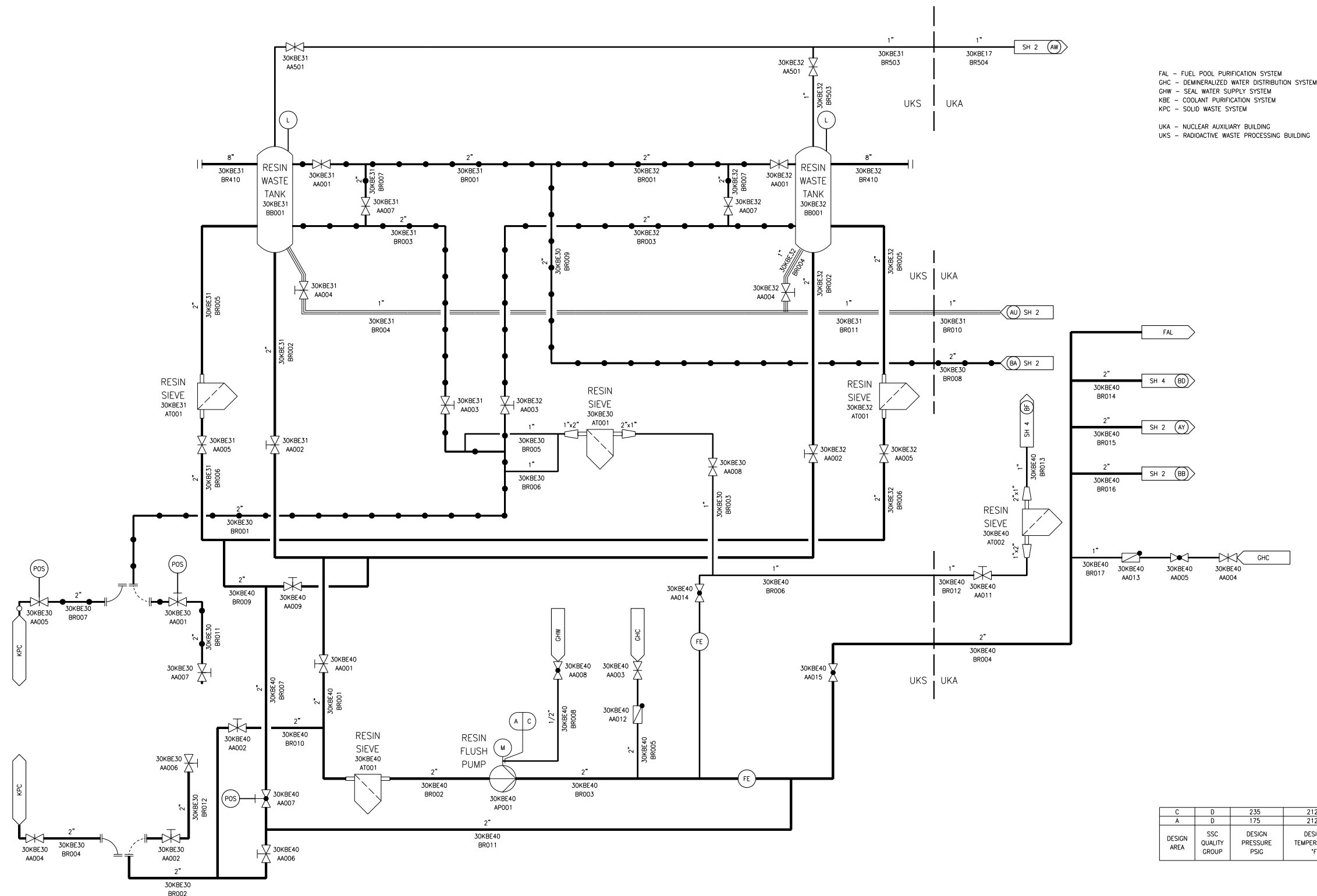
KBE03T2

Figure 9.3.4-2—Coolant Purification System
Sheet 4 of 5



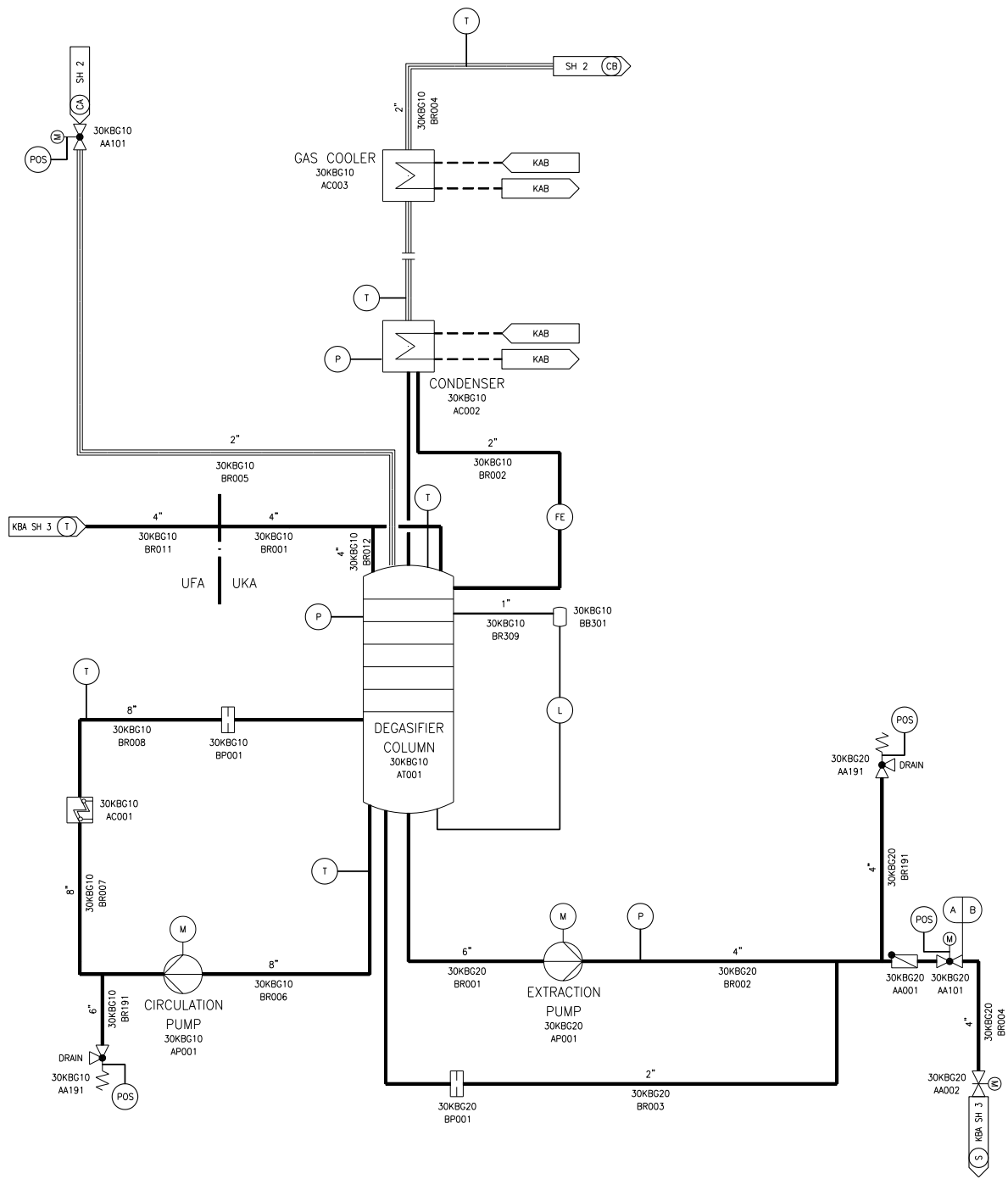
REV 001
KBE04T2

Figure 9.3.4-2—Coolant Purification System
Sheet 5 of 5



REV 001
KBE05T2

Figure 9.3.4-3—Coolant Degasification System
Sheet 1 of 2

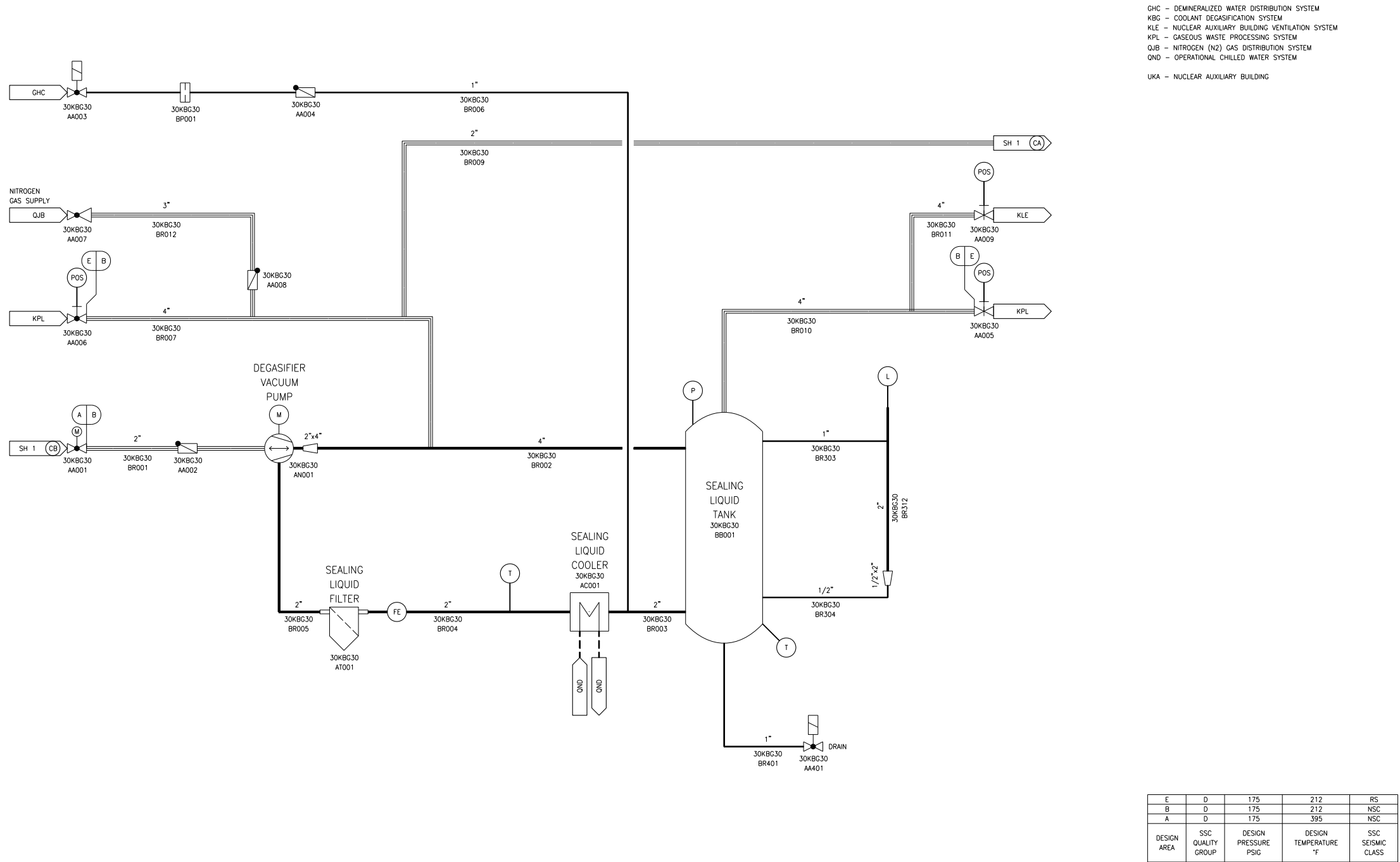


KAB - COMPONENT COOLING WATER SYSTEM COMMON HEADER
KBA - VOLUME CONTROL SYSTEM
KBG - COOLANT DEGASIFICATION SYSTEM
UFA - FUEL BUILDING
UKA - NUCLEAR AUXILIARY BUILDING

B	D	175	212	NSC
A	D	175	395	NSC
DESIGN AREA	SSC QUALITY GROUP	DESIGN PRESSURE PSIG	DESIGN TEMPERATURE °F	SSC SEISMIC CLASS

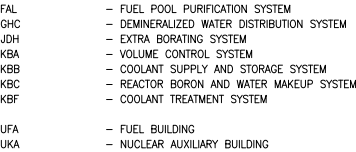
KBG01T2

Figure 9.3.4-3—Coolant Degasification System
Sheet 2 of 2



KBG02T2

Sheet 1 of 2

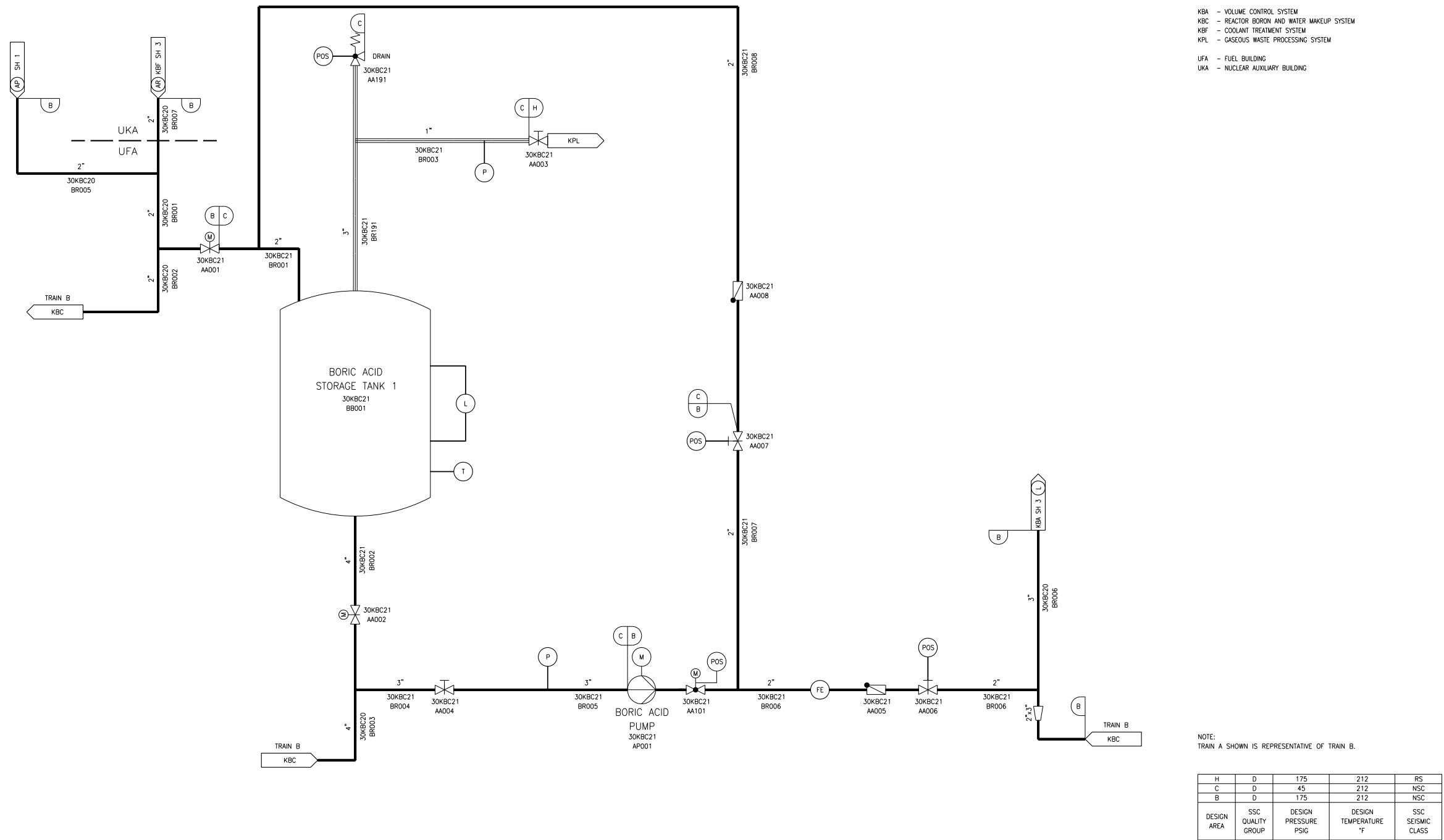


NOTE:
TRAIN A SHOWN IS REPRESENTATIVE OF TRAIN B.

F	E	175	212	NSC
D	E	175	320	NSC
B	D	175	212	NSC
A	E	0	212	NSC
DESIGN AREA	SSC QUALITY GROUP	DESIGN PRESSURE PSIG	DESIGN TEMPERATURE °F	SSC SEISMIC CLASS

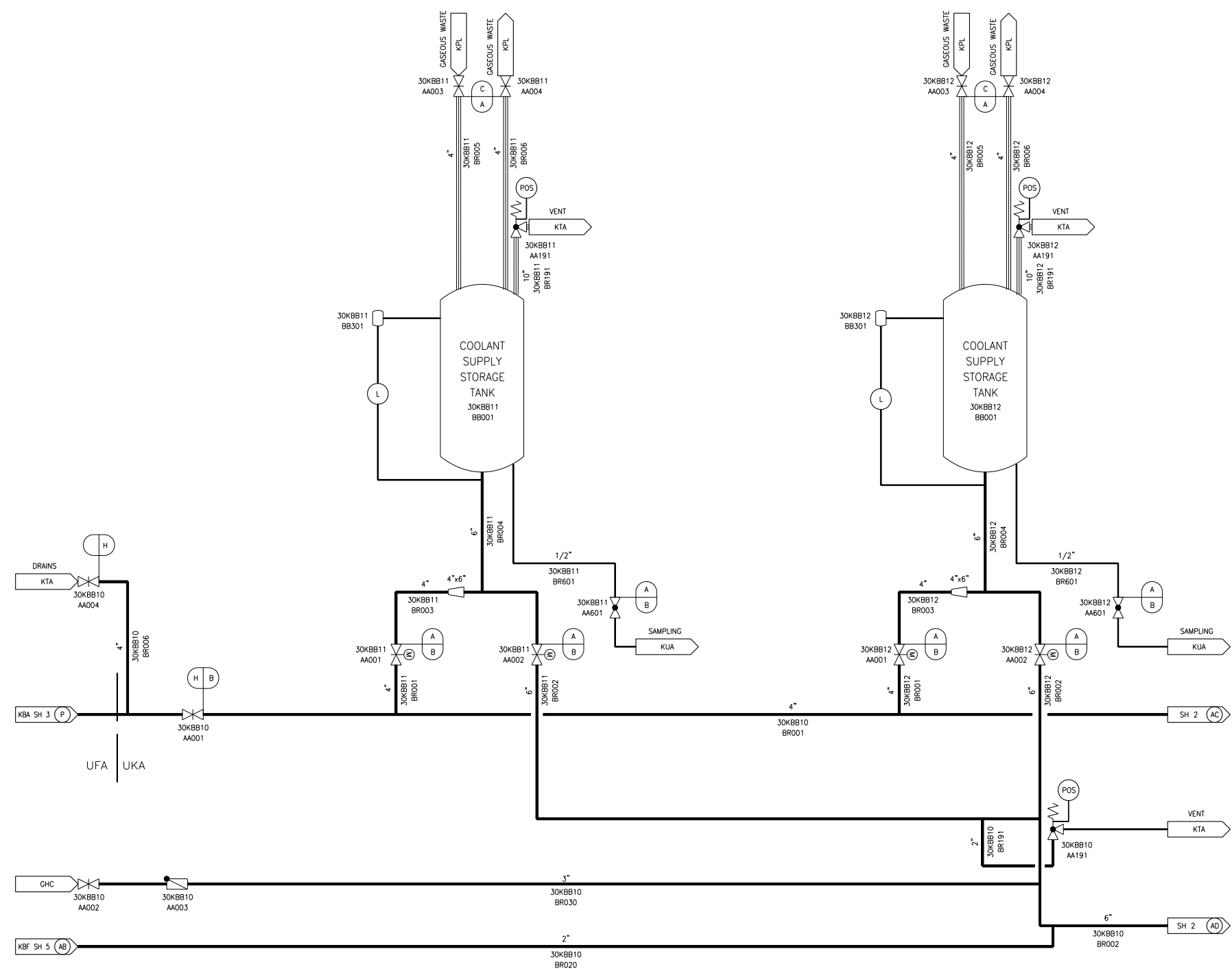
REV 002
KBC01T2

Figure 9.3.4-4—Reactor Boron and Water Makeup System
Sheet 2 of 2



KBC02T2

Figure 9.3.4-5—Coolant Supply and Storage System
Sheet 1 of 3



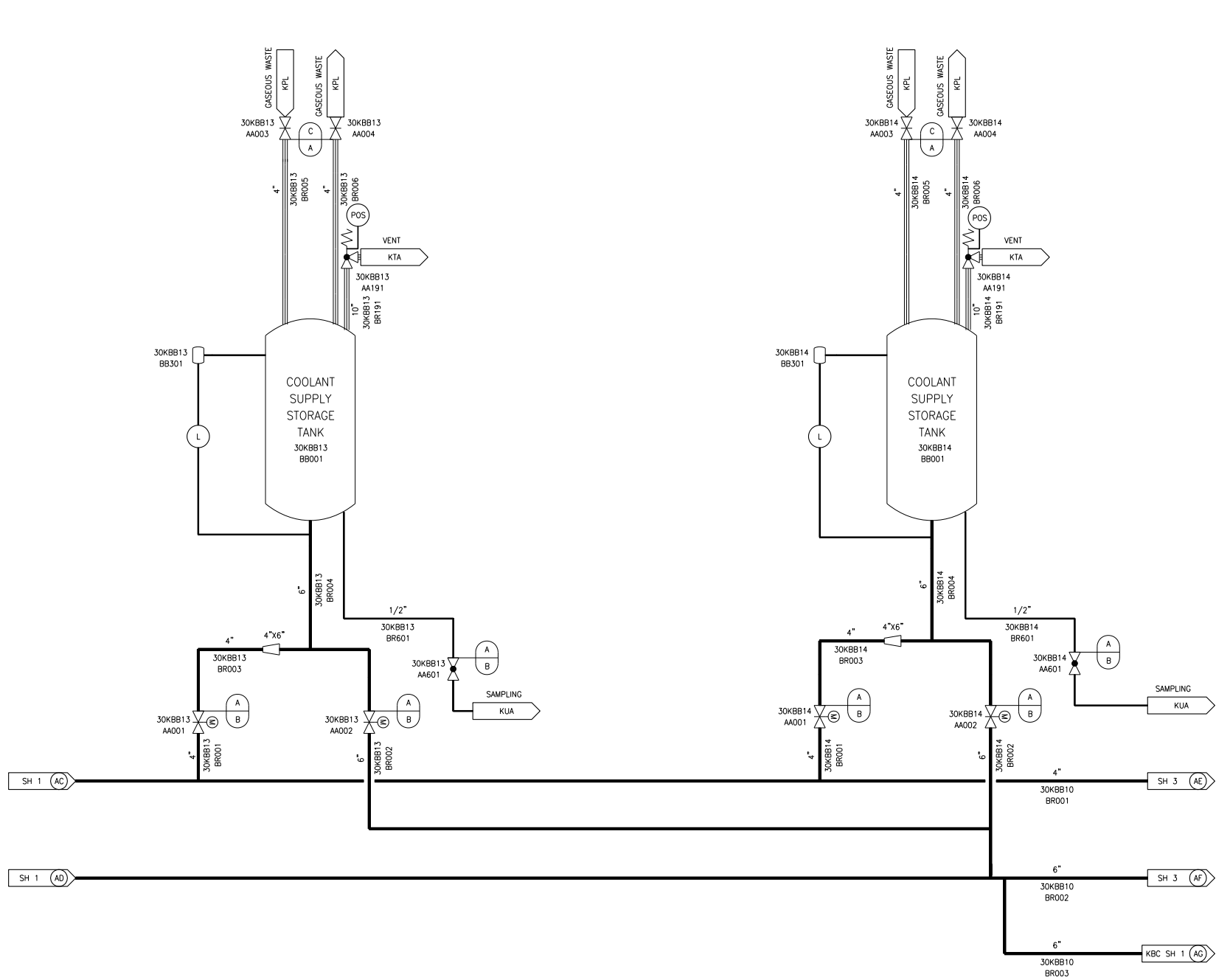
GHC - DEMINERALIZED WATER DISTRIBUTION SYSTEM
KBA - VOLUME CONTROL SYSTEM
KBB - COOLANT SUPPLY AND STORAGE SYSTEM
KBF - COOLANT TREATMENT SYSTEM
KPL - GASEOUS WASTE PROCESSING SYSTEM
KTA - NUCLEAR ISLAND DRAIN AND VENT SYSTEMS - PRIMARY EFFLUENTS
KUA - NUCLEAR SAMPLING SYSTEM - ACTIVE LIQUID SAMPLES

UFA - FUEL BUILDING
UKA - NUCLEAR AUXILIARY BUILDING

H	D	175	212	NSC
C	D	175	212	RS
B	D	175	212	NSC
A	D	45	212	NSC
DESIGN AREA	SSC QUALITY GROUP	DESIGN PRESSURE PSIG	DESIGN TEMPERATURE 'F	SSC SEISMIC CLASS

KBB01T2

Figure 9.3.4-5—Coolant Supply and Storage System
Sheet 2 of 3



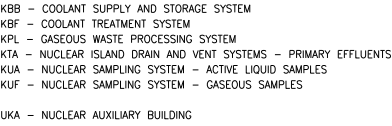
KBB - COOLANT SUPPLY AND STORAGE SYSTEM
KBC - REACTOR BORON AND WATER MAKEUP SYSTEM
KPL - GASEOUS WASTE PROCESSING SYSTEM
KTA - NUCLEAR ISLAND DRAIN & VENT SYSTEMS - PRIMARY EFFLUENTS
KUA - NUCLEAR SAMPLING SYSTEM - ACTIVE LIQUID SAMPLES

UKA - NUCLEAR AUXILIARY BUILDING

C	D	175	212	RS
B	D	175	212	NSC
A	D	45	212	NSC
DESIGN AREA	SSC QUALITY GROUP	DESIGN PRESSURE PSIG	DESIGN TEMPERATURE °F	SSC SEISMIC CLASS

KBB02T2

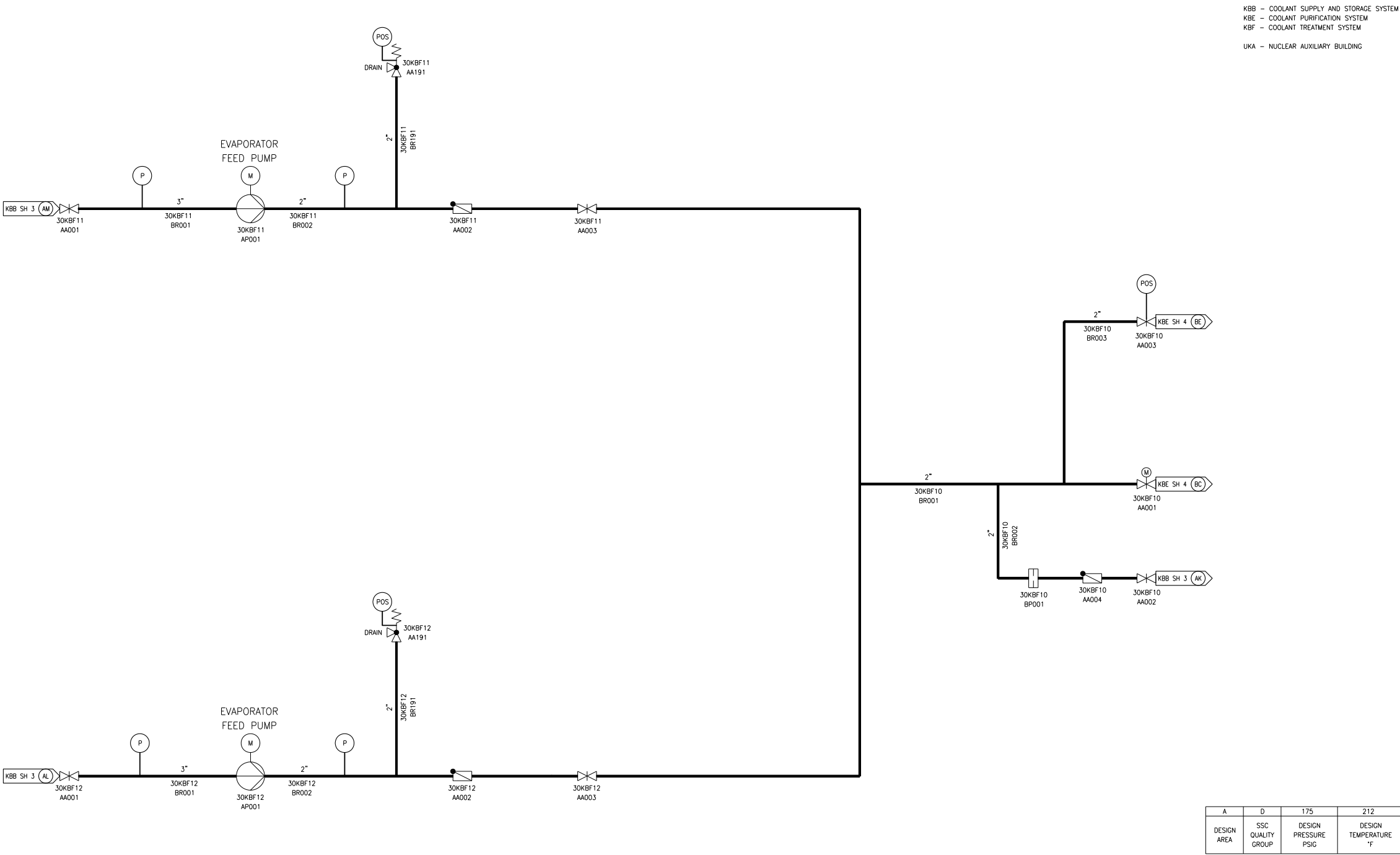
Sheet 3 of 3



C	D	175	212	RS
B	D	175	212	NSC
A	D	45	212	NSC
DESIGN AREA	SSC QUALITY GROUP	DESIGN PRESSURE PSIG	DESIGN TEMPERATURE 'F	SSC SEISMIC CLASS

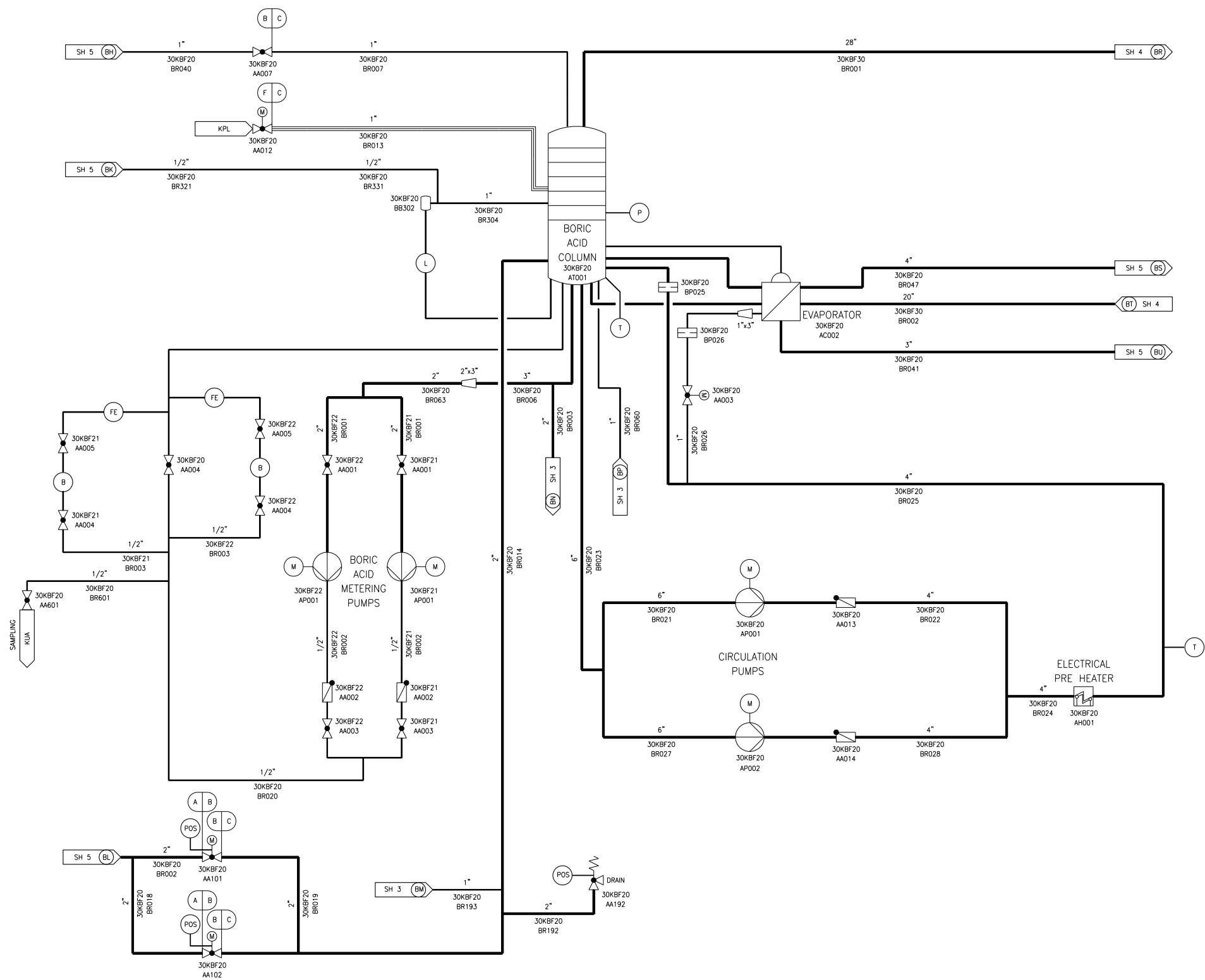
KBB03T2

Figure 9.3.4-6—Coolant Treatment System
Sheet 1 of 6



KBFO1T2

Figure 9.3.4-6—Coolant Treatment System
Sheet 2 of 6

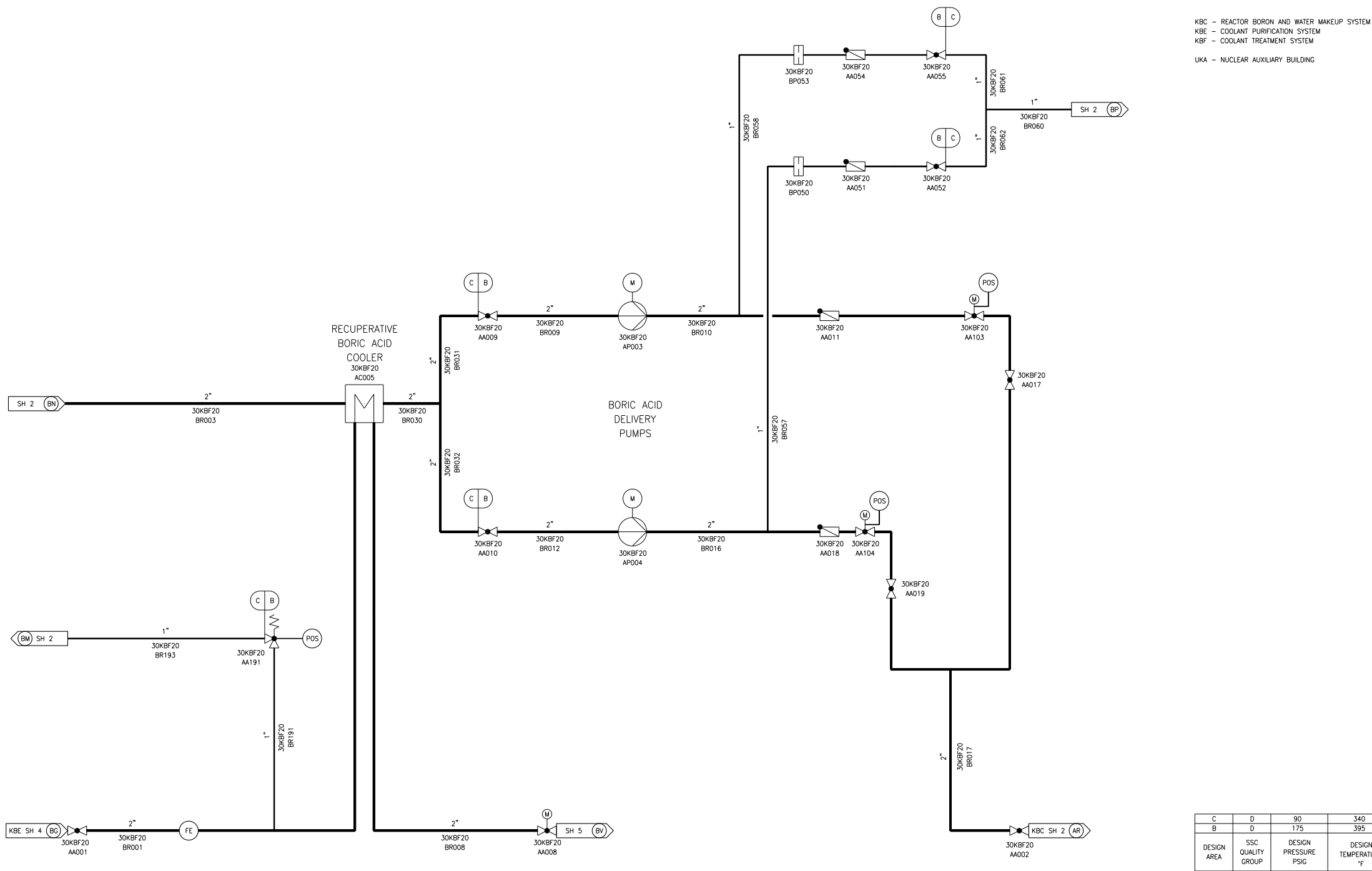


KBF - COOLANT TREATMENT SYSTEM
KPL - CASEOUS WASTE PROCESSING SYSTEM
KUA - NUCLEAR SAMPLING SYSTEM - ACTIVE LIQUID SAMPLES
UKA - NUCLEAR AUXILIARY BUILDING

F	D	175	395	RS
C	D	90	340	NSC
B	D	175	395	NSC
A	D	175	212	NSC
DESIGN AREA	SSC QUALITY GROUP	DESIGN PRESSURE PSIG	DESIGN TEMPERATURE °F	SSC SEISMIC CLASS

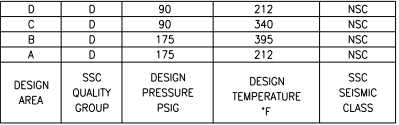
KBF02T2

Figure 9.3.4-6—Coolant Treatment System
Sheet 3 of 6



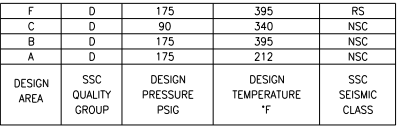
KBFO3T2

Figure 9.3.4-6—Coolant Treatment System
Sheet 4 of 6



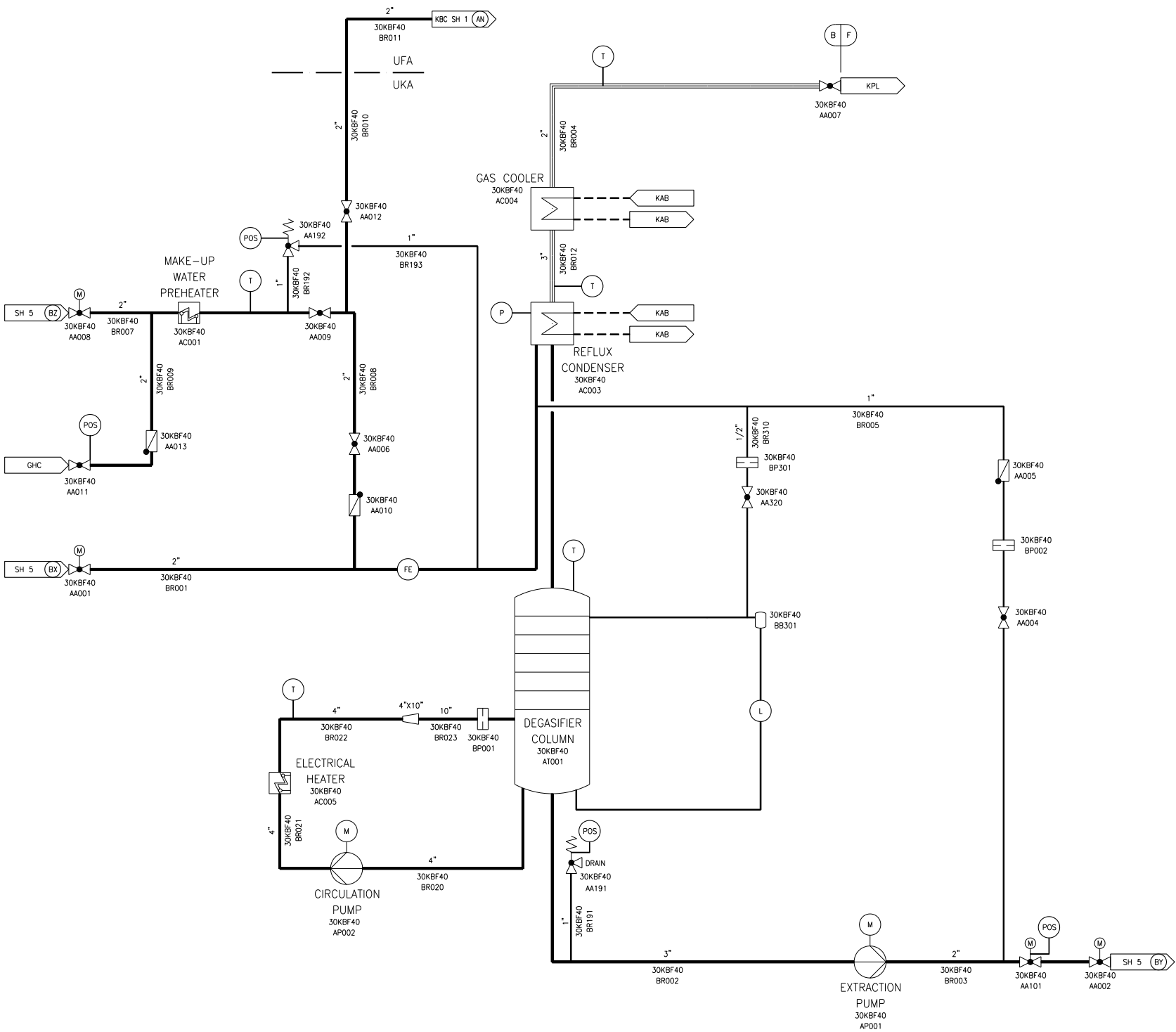
KBFO4T2

Sheet 5 of 6



KBF05T2

Figure 9.3.4-6—Coolant Treatment System
Sheet 6 of 6



GHC - DEMINERALIZED WATER DISTRIBUTION SYSTEM
KAB - COMPONENT COOLING WATER SYSTEM COMMON HEADER
KBC - REACTOR BORON AND WATER MAKEUP SYSTEM
KBF - COOLANT TREATMENT SYSTEM
KPL - GASEOUS WASTE PROCESSING SYSTEM

UFA - FUEL BUILDING
UKA - NUCLEAR AUXILIARY BUILDING

F	D	175	395	RS
B	D	175	395	NSC
DESIGN AREA	SSC QUALITY GROUP	DESIGN PRESSURE PSIG	DESIGN TEMPERATURE °F	SSC SEISMIC CLASS

KBFO6T2