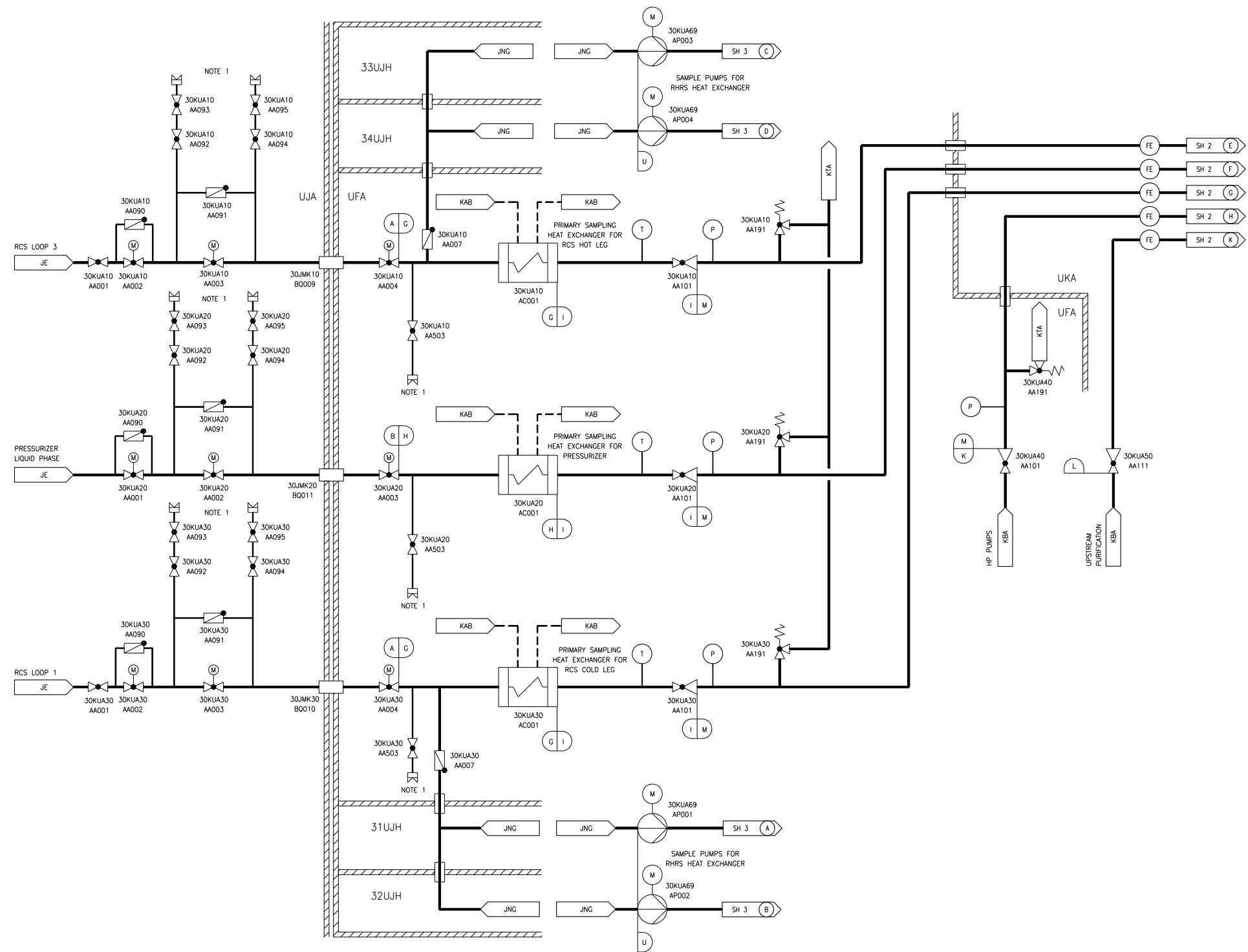


Figure 9.3.2-1—Nuclear Sampling System  
Sheet 1 of 9



JE - REACTOR COOLANT SYSTEM  
JNG - LOW HEAD SAFETY INJECTION SYSTEM  
KAB - COMPONENT COOLING WATER SYSTEM COMMON HEADER  
KBA - VOLUME CONTROL SYSTEM  
KTA - NUCLEAR ISLAND DRAIN AND VENT SYSTEMS - PRIMARY EFFLUENTS  
KUA - NUCLEAR SAMPLING SYSTEM - ACTIVE LIQUID SAMPLES

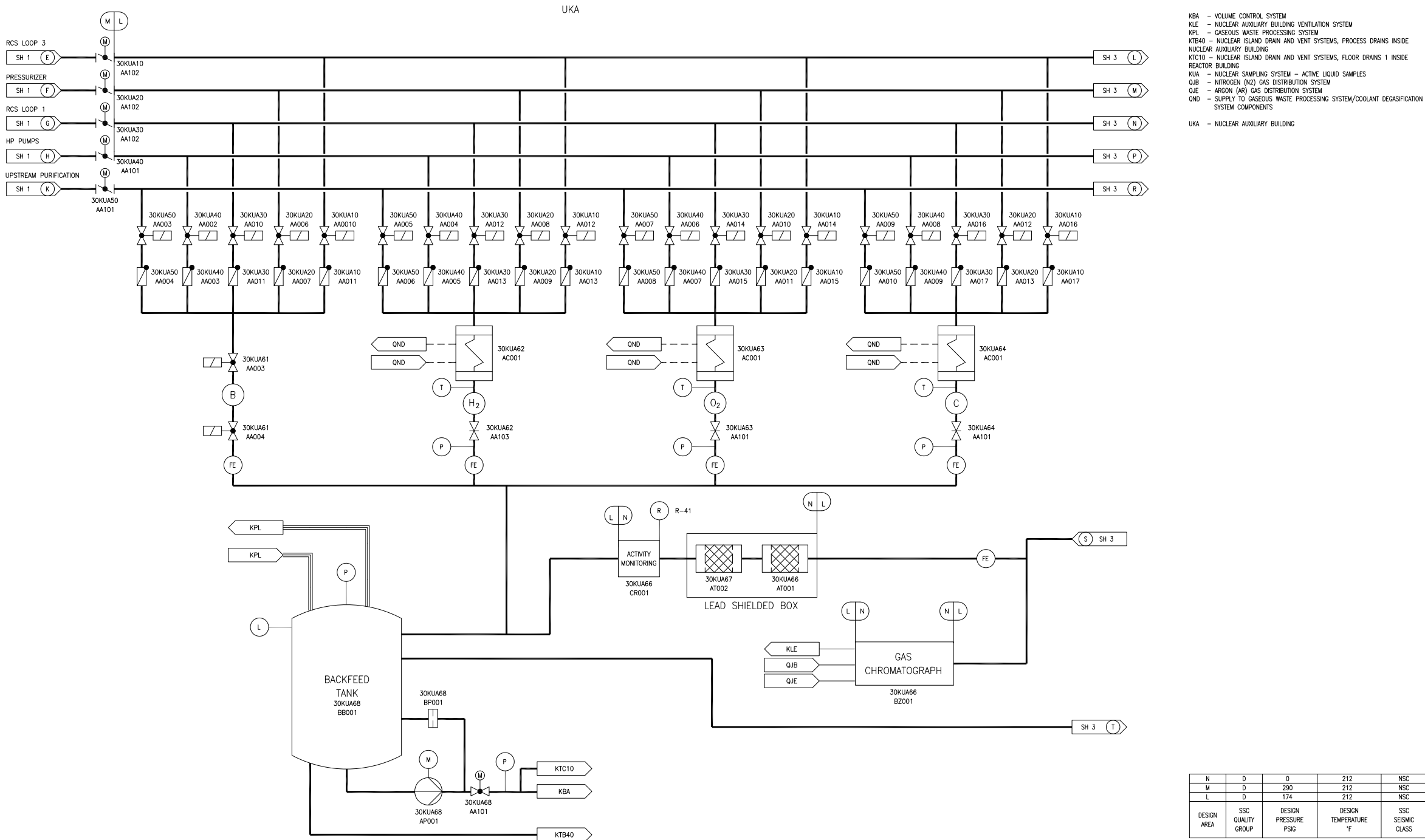
UFA - FUEL BUILDING  
UUA - REACTOR BUILDING  
UKA - NUCLEAR AUXILIARY BUILDING  
31UJH - SAFEGUARD BUILDING MECHANICAL, DIVISION 1  
32UJH - SAFEGUARD BUILDING MECHANICAL, DIVISION 2  
33UJH - SAFEGUARD BUILDING MECHANICAL, DIVISION 3  
34UJH - SAFEGUARD BUILDING MECHANICAL, DIVISION 4

NOTE:  
1. CONNECTION FOR CONTAINMENT LEAK TIGHTNESS TEST.

U	D	1160	356	NSC
M	D	290	212	NSC
L	D	174	212	NSC
K	D	3626	212	NSC
I	D	2535	212	NSC
H	D	2535	684	NSC
G	D	2535	664	NSC
B	B	2535	684	I
A	B	2535	664	I
DESIGN AREA	SSC QUALITY GROUP	DESIGN PRESSURE PSIG	DESIGN TEMPERATURE °F	SSC SEISMIC CLASS

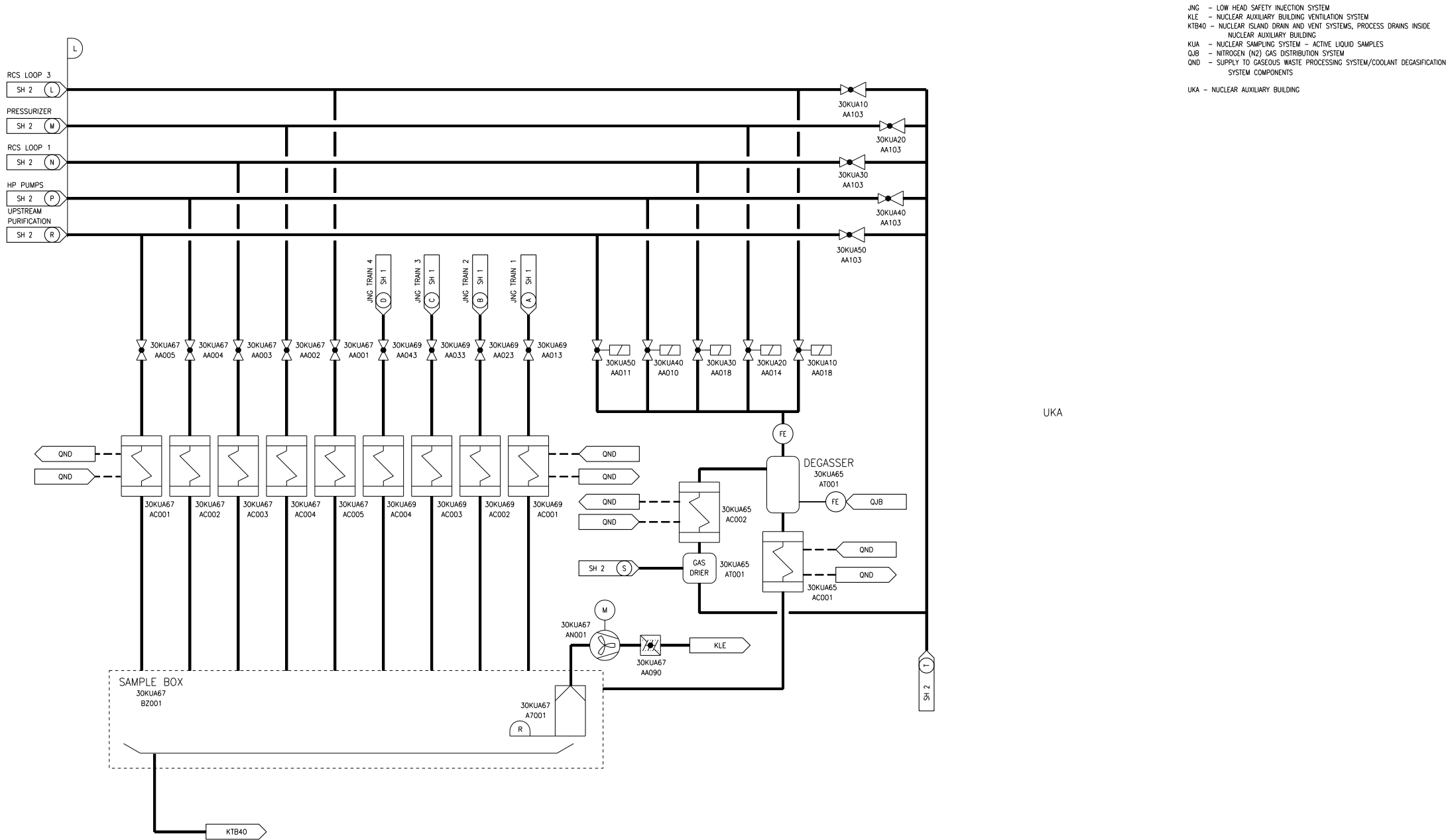
KUA01T2

Figure 9.3.2-1—Nuclear Sampling System  
Sheet 2 of 9



REV 003  
KUA02T2

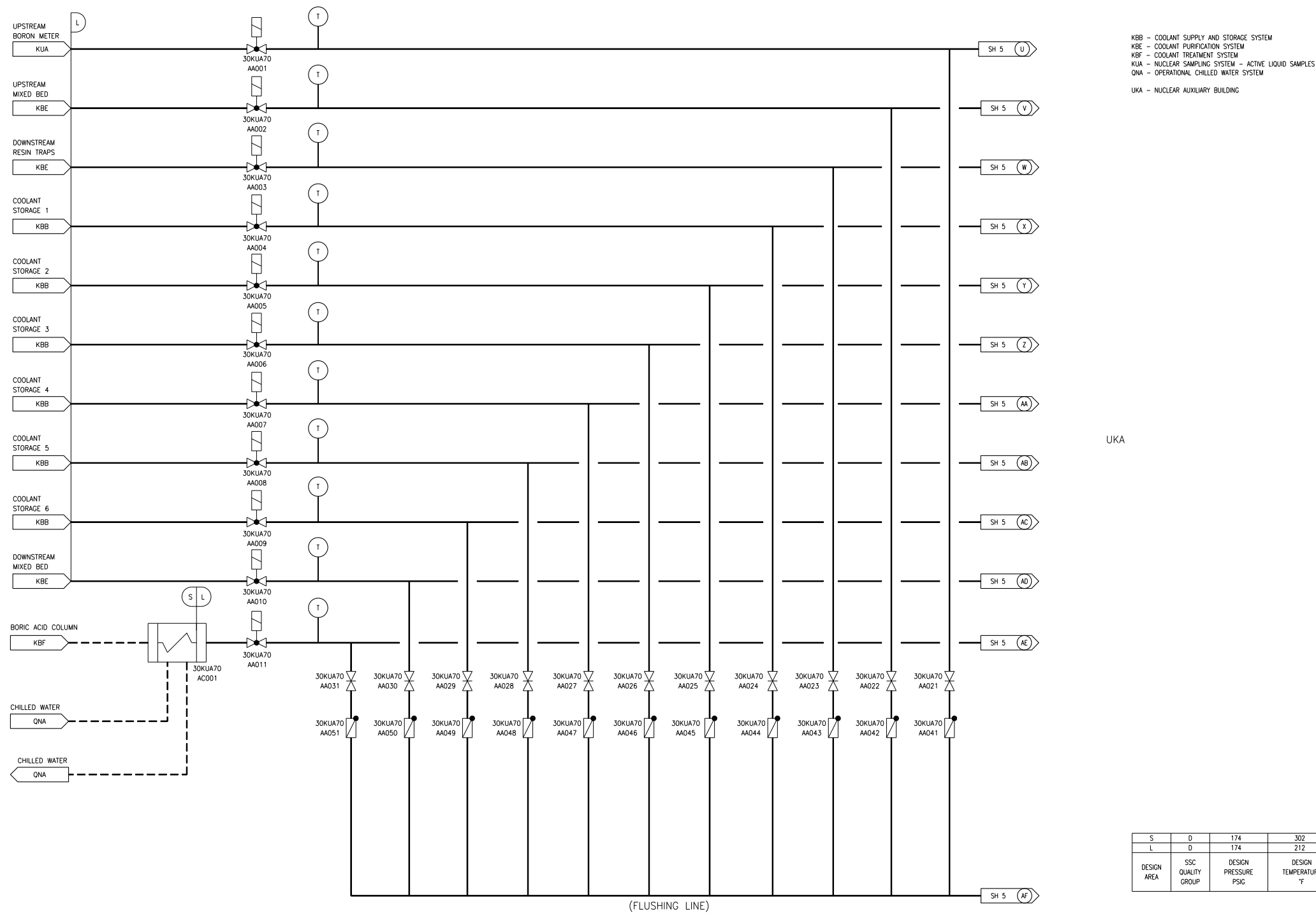
Figure 9.3.2-1—Nuclear Sampling System  
Sheet 3 of 9



R	D	15	122	NSC
L	D	174	212	NSC
DESIGN AREA	SSC QUALITY GROUP	DESIGN PRESSURE PSIG	DESIGN TEMPERATURE °F	SSC SEISMIC CLASS

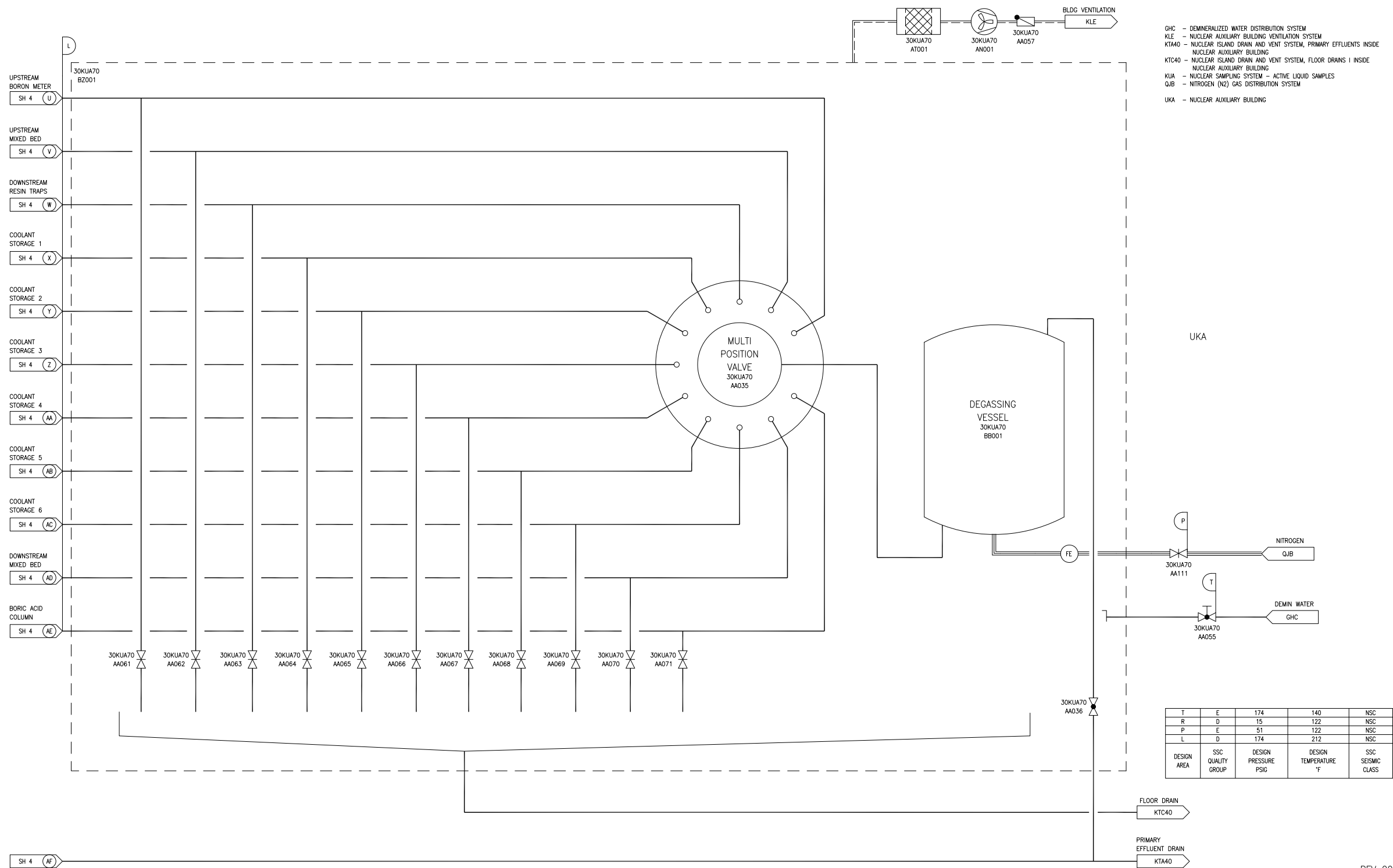
KUA03T2

Figure 9.3.2-1—Nuclear Sampling System  
Sheet 4 of 9



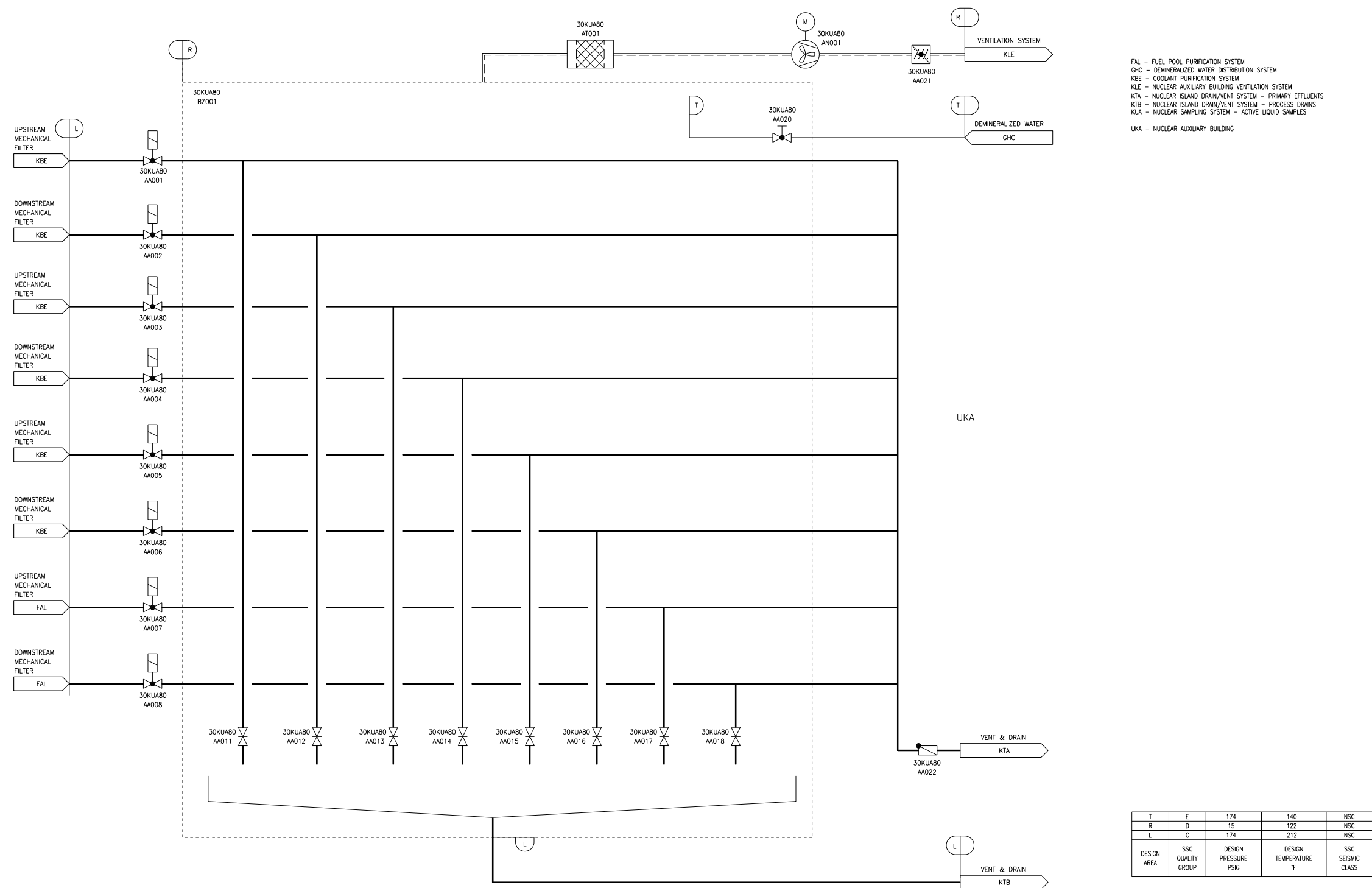
KUA04T2

Figure 9.3.2-1—Nuclear Sampling System  
Sheet 5 of 9



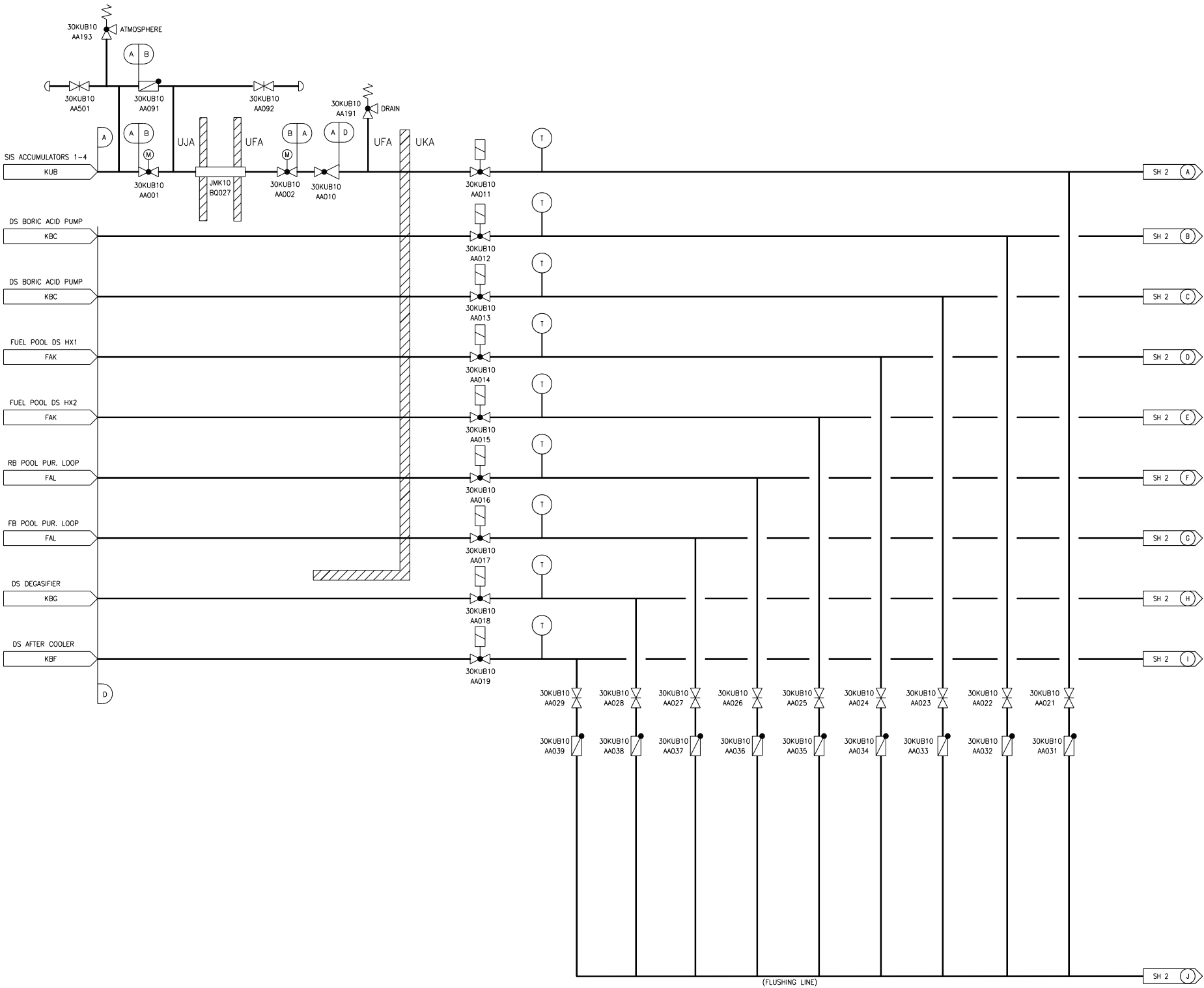
REV 003  
KUA05T2

Figure 9.3.2-1—Nuclear Sampling System  
Sheet 6 of 9



KUA06T2

Figure 9.3.2-1—Nuclear Sampling System  
Sheet 7 of 9

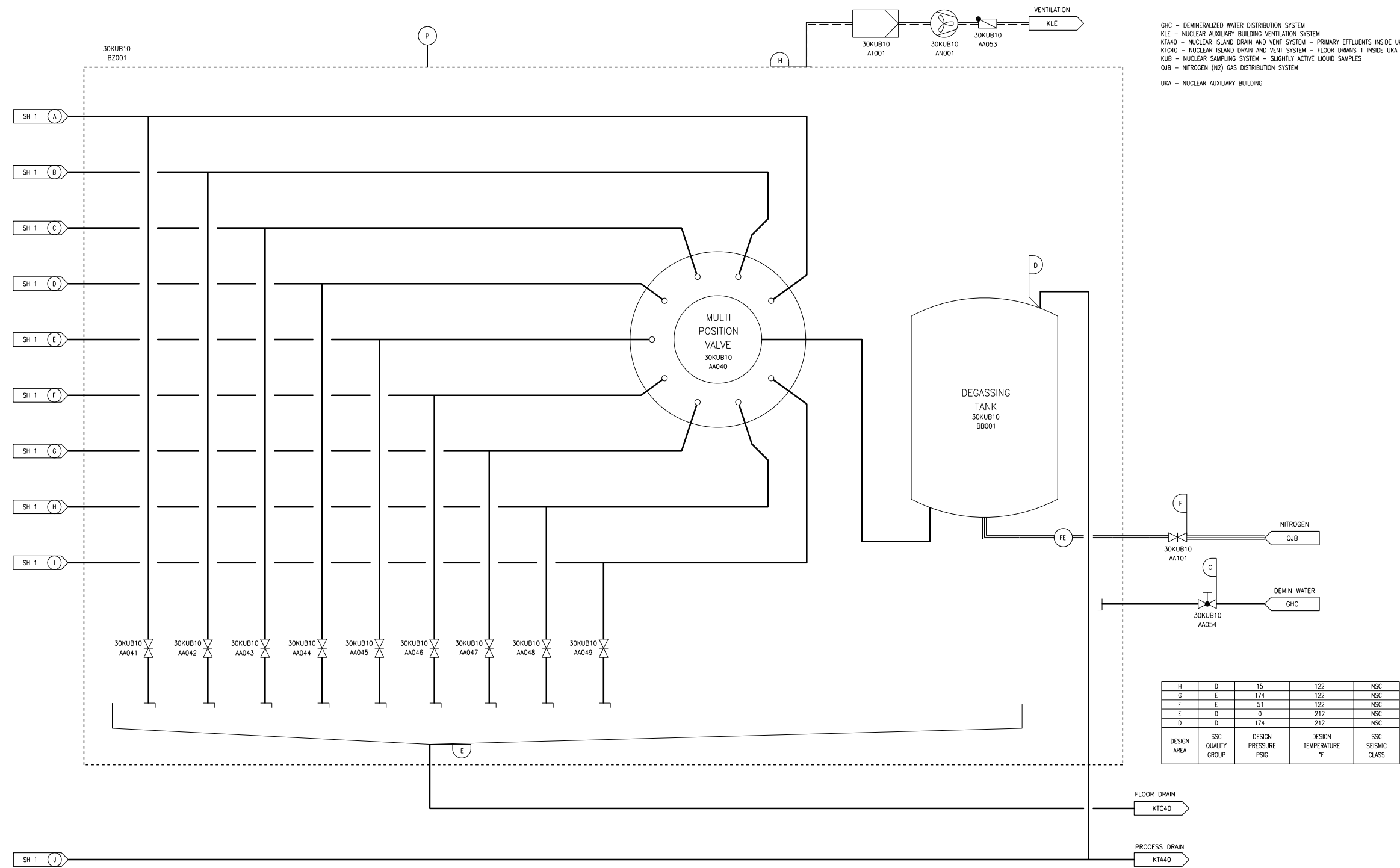


FAK – FUEL POOL COOLING SYSTEM  
FAL – FUEL POOL PURIFICATION SYSTEM  
KBC – REACTOR BORON AND WATER MAKEUP SYSTEM  
KBF – COOLANT TREATMENT SYSTEM  
KBF – COOLANT DEGASIFICATION SYSTEM  
KUB – NUCLEAR SAMPLING SYSTEM – SLIGHTLY ACTIVE LIQUID SAMPLES  
  
UFA – FUEL BUILDING  
UJA – REACTOR BUILDING  
UKA – NUCLEAR AUXILIARY BUILDING

D	0	174	212	NSC
B	B	798	338	I
A	B	798	140	I
DESIGN AREA	SSC QUALITY GROUP	DESIGN PRESSURE PSIG	DESIGN TEMPERATURE °F	SSC SEISMIC CLASS

KUB01T2

Figure 9.3.2-1—Nuclear Sampling System  
Sheet 8 of 9

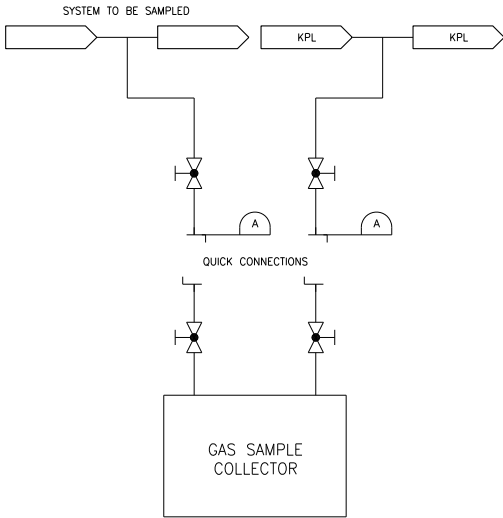


KUB02T2



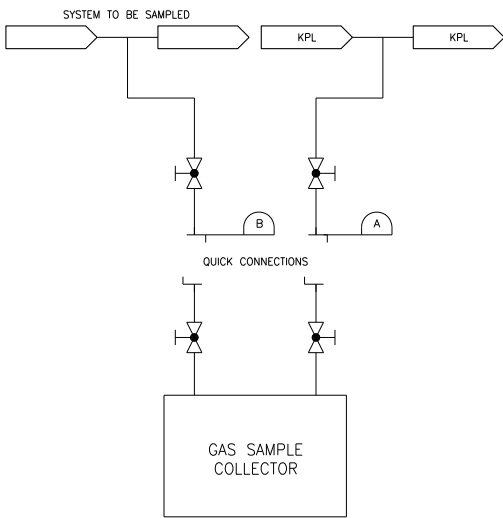
Figure 9.3.2-1—Nuclear Sampling System  
Sheet 9 of 9

KBB - COOLANT SUPPLY AND STORAGE SYSTEM  
KPL - GASEOUS WASTE PROCESSING SYSTEM  
KTA20 - NUCLEAR ISLAND DRAIN/VENT SYSTEM, PRIMARY EFFLUENTS INSIDE UJH  
KTA30 - NUCLEAR ISLAND DRAIN/VENT SYSTEM, PRIMARY EFFLUENTS INSIDE UFA  
KTA40 - NUCLEAR ISLAND DRAIN/VENT SYSTEM, PRIMARY EFFLUENTS INSIDE UKA  
KUF - NUCLEAR SAMPLING SYSTEM - GASEOUS SAMPLES



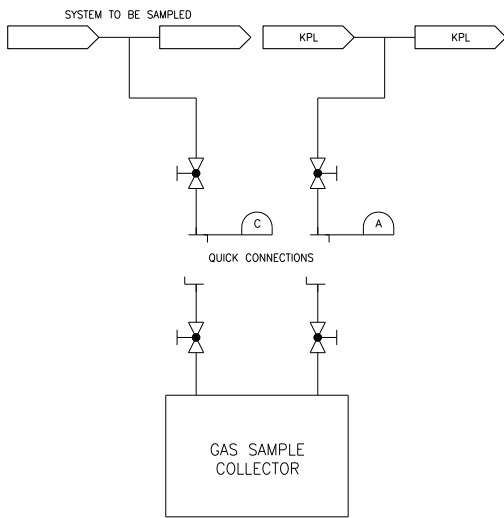
REPRESENTATIVE OF SAMPLES FOR:

- UPSTREAM GAS DRYER (KPL)
- UPSTREAM RECOMBINER (KPL)
- DOWNSTREAM RECOMBINER (KPL)
- KUA BACKFEED VESSEL
- FUEL BUILDING DRAIN TANKS (KTA30 BB001/2)
- NAB DRAIN TANKS (KTA40 BB001)
- SB DRAIN TANKS (KTA20 BB001/2/3/4)
- RCS SWEEPING



REPRESENTATIVE OF SAMPLES FOR:

- KBB STORAGE TANK 6



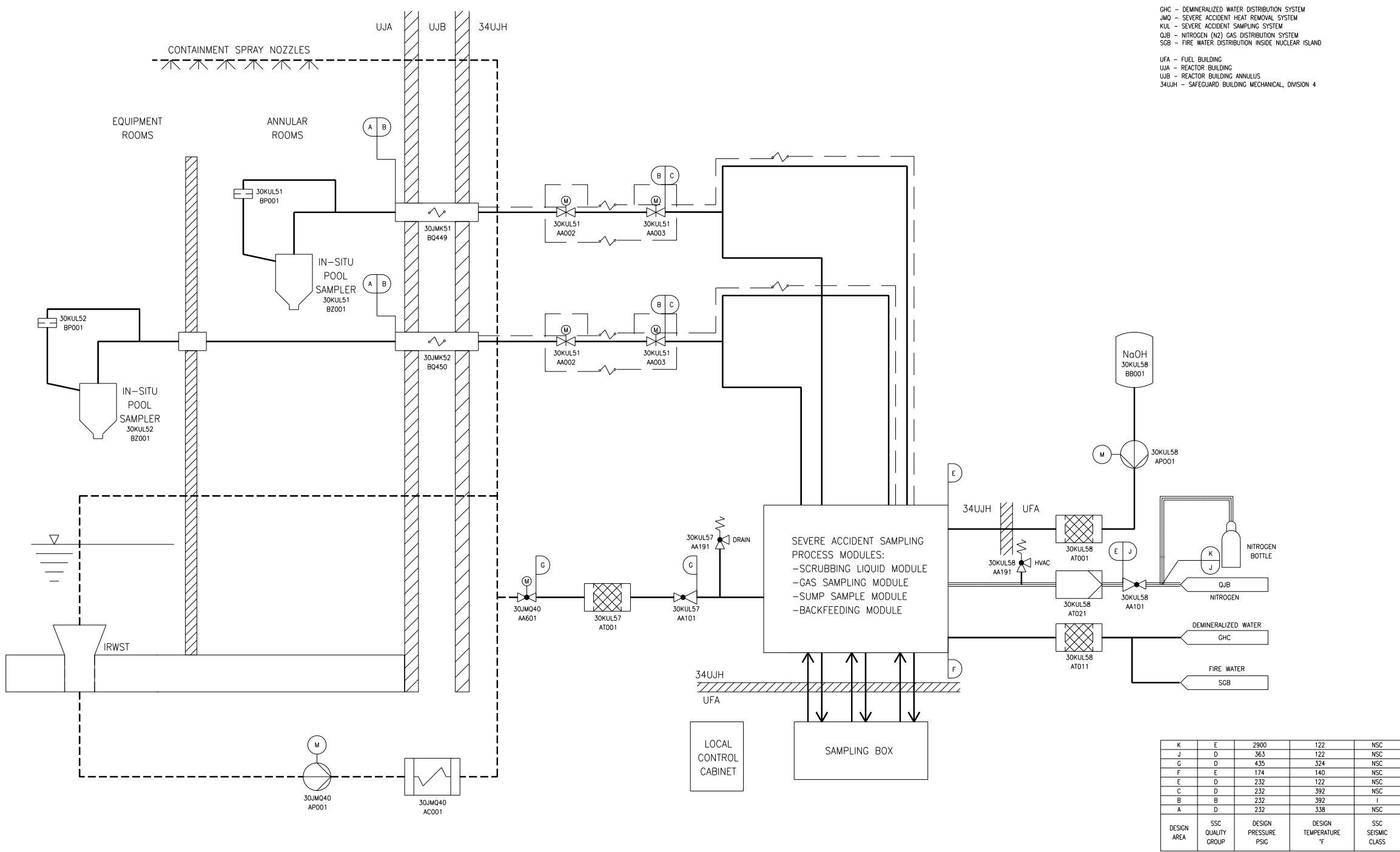
REPRESENTATIVE OF SAMPLES FOR:

- UPSTREAM DELAY BEDS (KPL)
- DOWNSTREAM DELAY BED 1/2 (KPL)

C	D	290	212	NSC
B	D	44	212	NSC
A	D	174	212	NSC
DESIGN AREA	SSC QUALITY GROUP	DESIGN PRESSURE PSIG	DESIGN TEMPERATURE °F	SSC SEISMIC CLASS

KUF01T2

Figure 9.3.2-2—Severe Accident Sampling System



KUL01T2