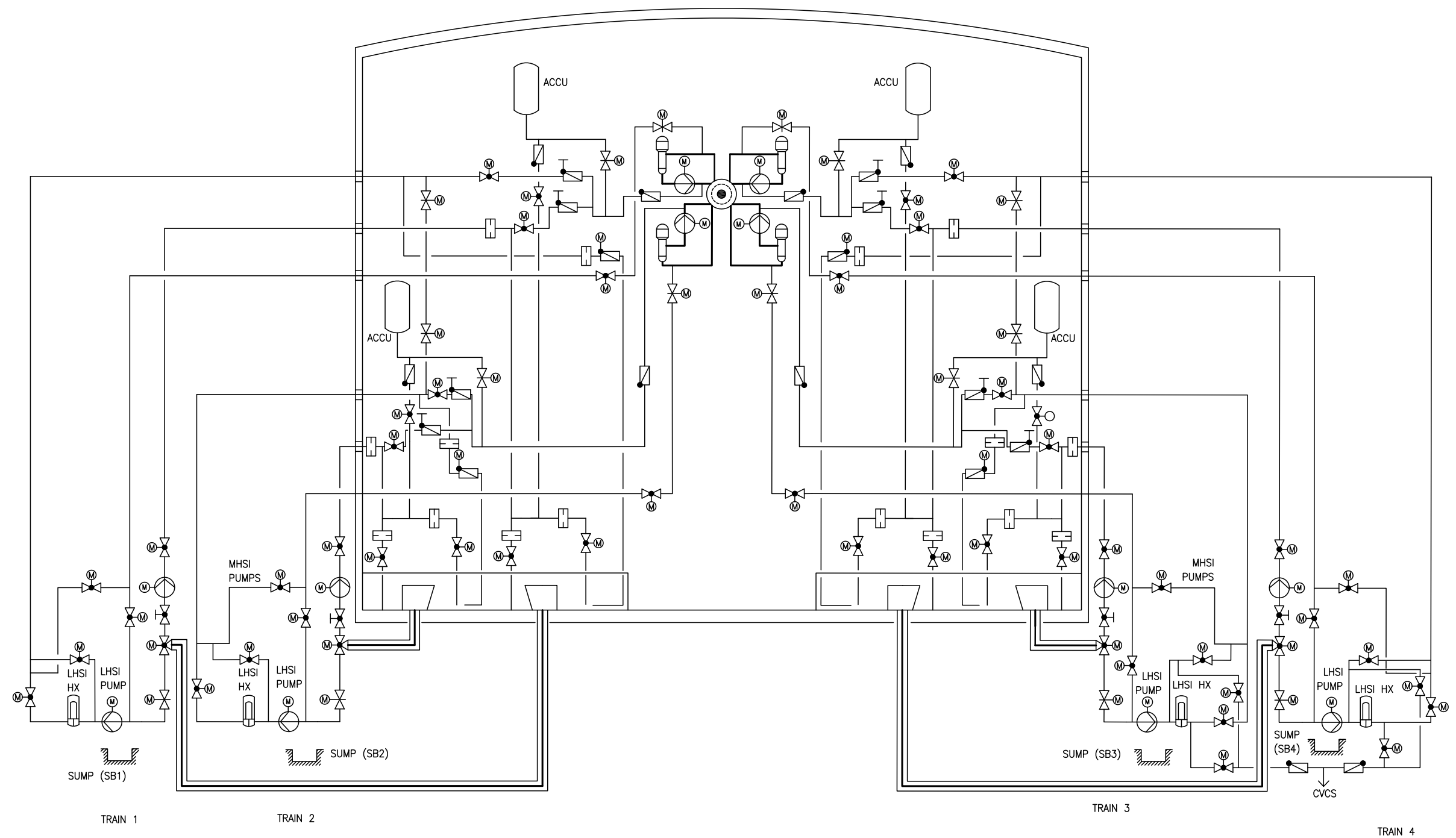
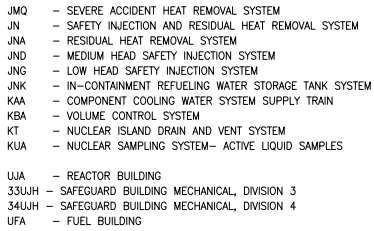


Figure 6.3-1—Safety Injection System Overview



REV 002
JNX03T2

Sheet 1 of 2

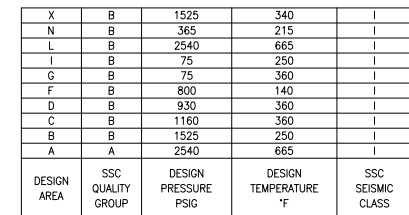


- NOTES:
1. TRAIN 4 SHOWN: REPRESENTATIVE OF TRAINS 1, 2 AND 3 WITH EXCEPTIONS AS NOTED.
 2. CONNECTION FOR CONTAINMENT ISOLATION LEAK TIGHTNESS TEST.
 3. 30JND40 BRO10 APPLIES TO TRAIN 4 ONLY. FOR TRAINS 1, 2 AND 3, 30JND10/20/30 BRO01 EXTENDS TO THE 3-WAY VALVE.
 4. DESIGN AREA H ENDS AT THE INLET TO THE 3-WAY VALVE AND CONTINUES AS DESIGN AREA E FOR TRAINS 1, 2 AND 3.

X	B	1525	340	I
V	B	175	320	I
H	B	75	320	I
E	B	75	250	I
D	B	930	360	I
C	B	1160	360	I
B	B	1525	250	I
DESIGN AREA	SSC QUALITY GROUP	DESIGN PRESSURE PSIG	DESIGN TEMPERATURE °F	SSC SEISMIC CLASS

REV 002
JNX01T2

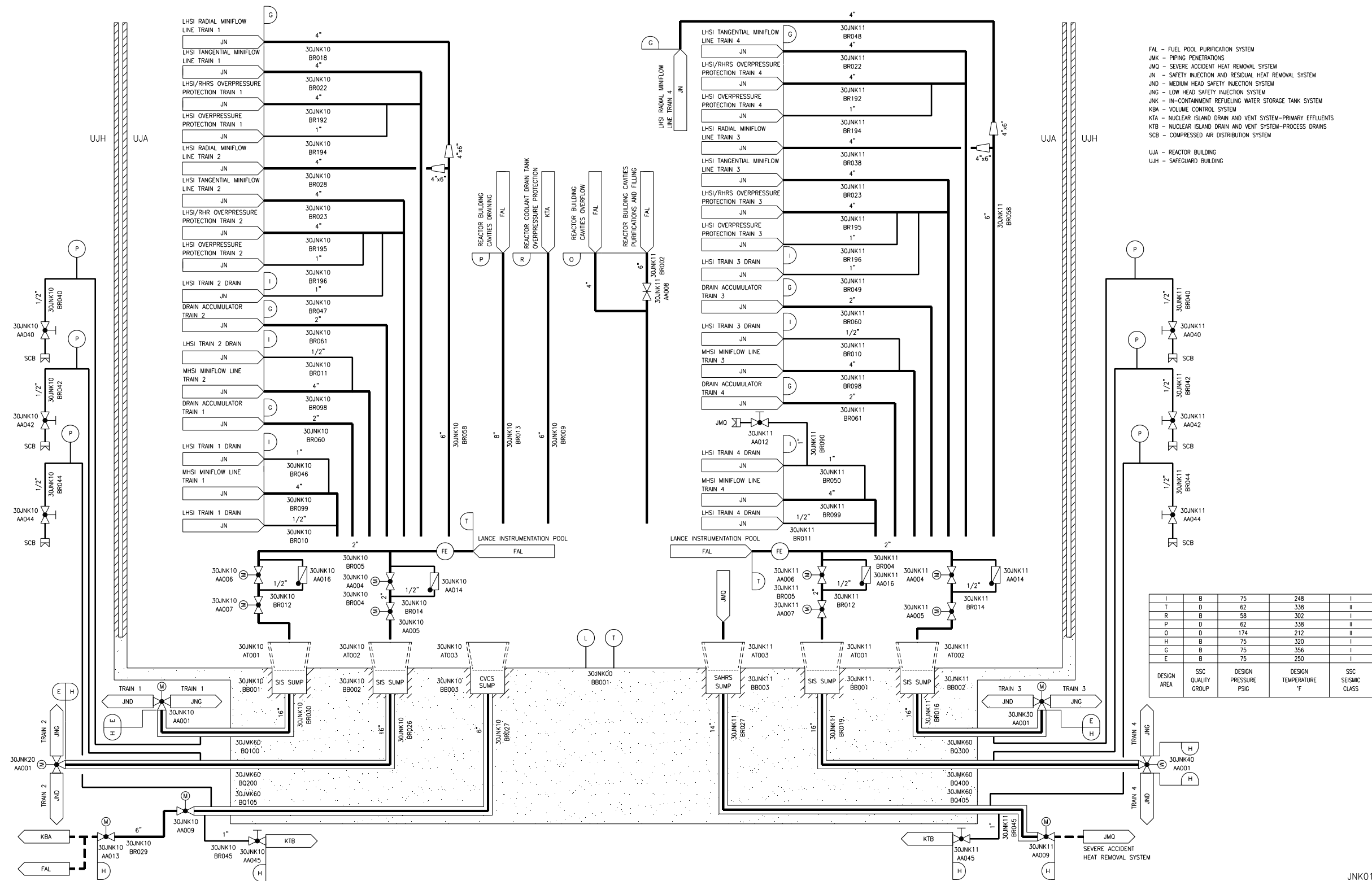
Sheet 2 of 2



NOTES:

1. TRAIN 4 SHOWN IS REPRESENTATIVE OF TRAINS 1, 2 AND 3 WITH EXCEPTIONS AS NOTED
2. CONNECTION FOR CONTAINMENT ISOLATION LEAK TIGHTNESS TEST.

Figure 6.3-3—IRWST Layout



JNK01T2