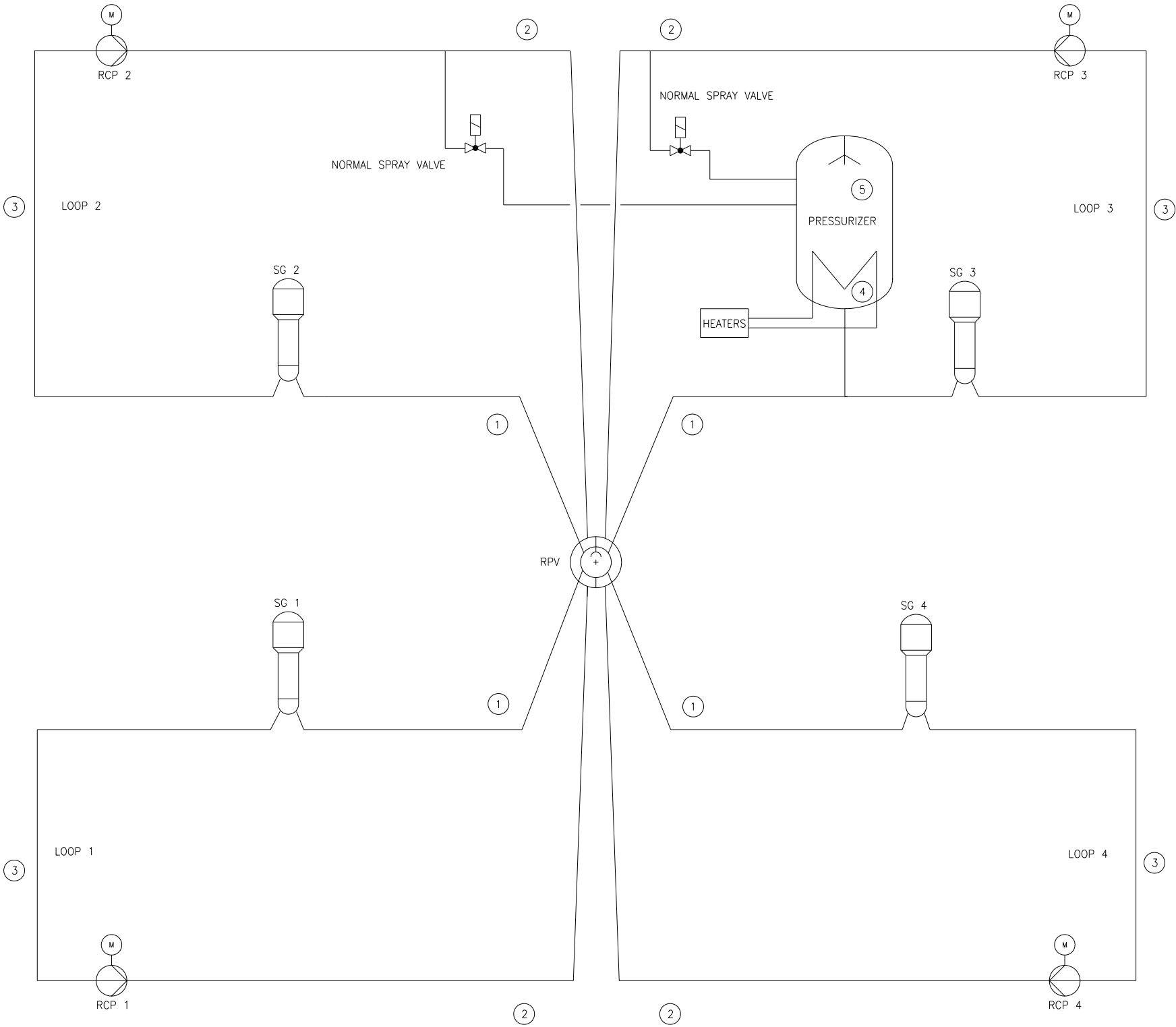


Figure 5.1-1—RCS Schematic Flow Diagram

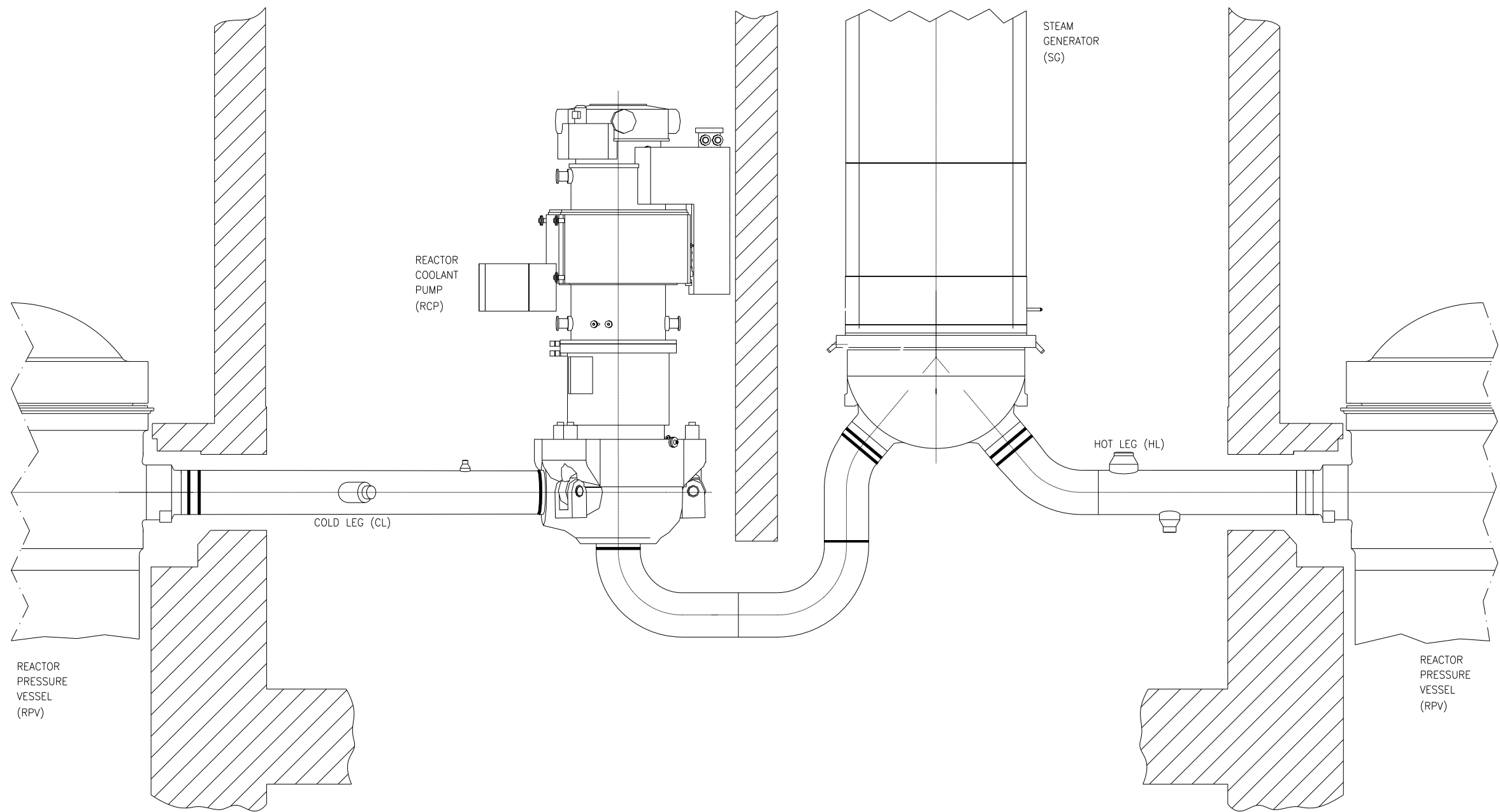


BEST ESTIMATE CONDITIONS OF RCS AT 100% POWER				
ITEM	DESCRIPTION	FLOW (gpm)	PRESSURE (psia)	TEMPERATURE (F)
1	HOT LEG	124,741	2265	624.6
2	COLD LEG	124,741	2324	563.4
3	CROSS-OVER LEG	124,741	2218	563.4
4	PZR LIQUID PHASE	-	2250	652.7
5	PZR STEAM PHASE	-	2250	652.7

JEX002 T2

Figure 5.1-2—RCS Layout

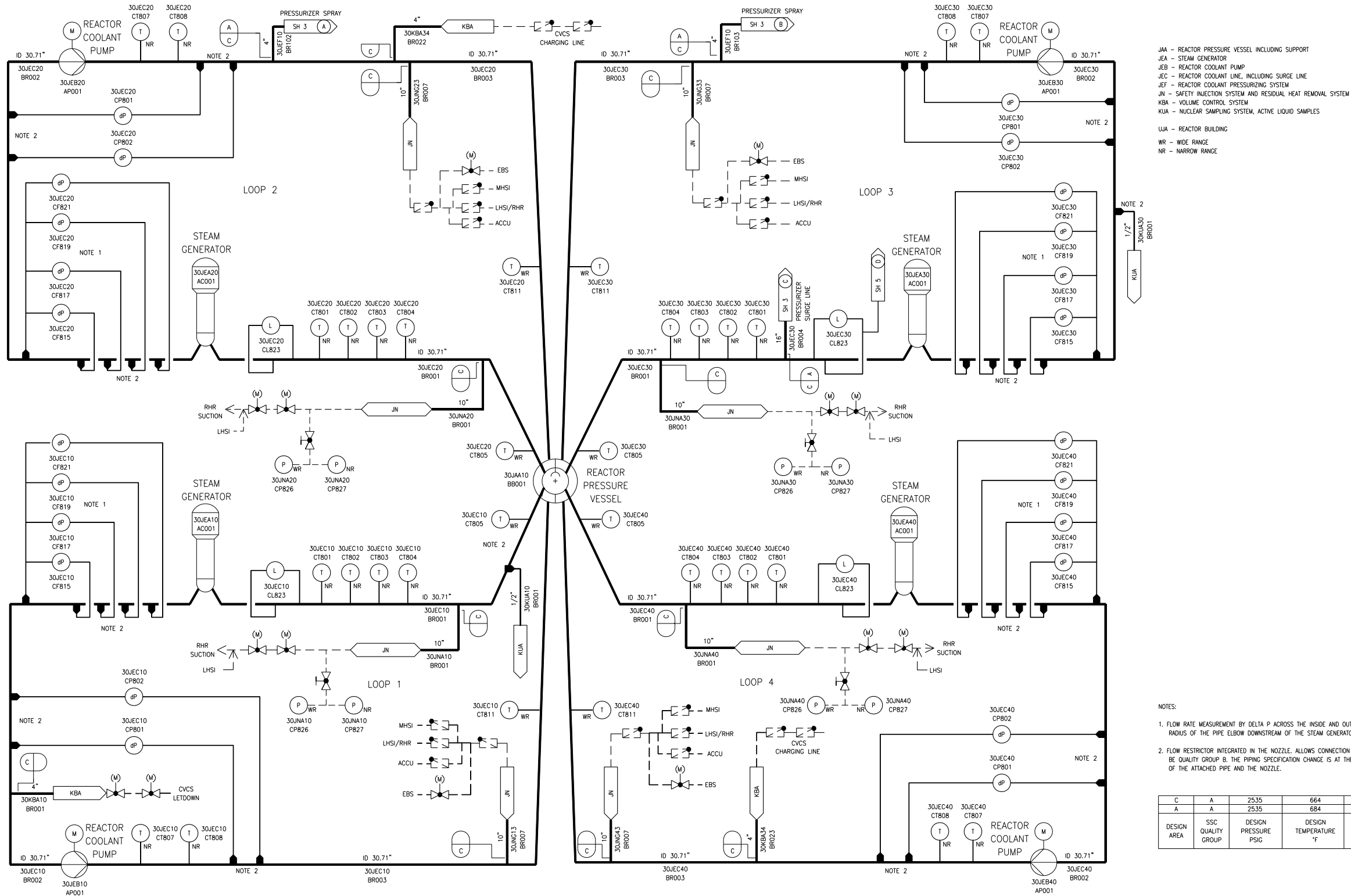
Figure 5.1-3—RCS Elevation



NOTES:
1. COMPONENTS, WALLS & PIPING ROTATED FOR CLARITY

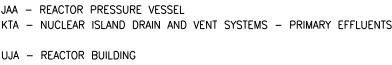
JE05 T2

Figure 5.1-4—RCS Piping and Instrumentation Diagram
Sheet 1 of 7



JEX01T2

Figure 5.1-4—RCS Piping and Instrumentation Diagram
Sheet 2 of 7



NOTE:
NOZZLE BETWEEN RPV INTERNAL AND EXTERNAL O-RING.
FLOW RESTRICTOR INTEGRATED INTO THE NOZZLE.

I	D	425	215	II
F	D	2535	664	II
D	A	2535	664	I
DESIGN AREA	SSC QUALITY GROUP	DESIGN PRESSURE PSIG	DESIGN TEMPERATURE °F	SSC SEISMIC CLASS

JEX02T2

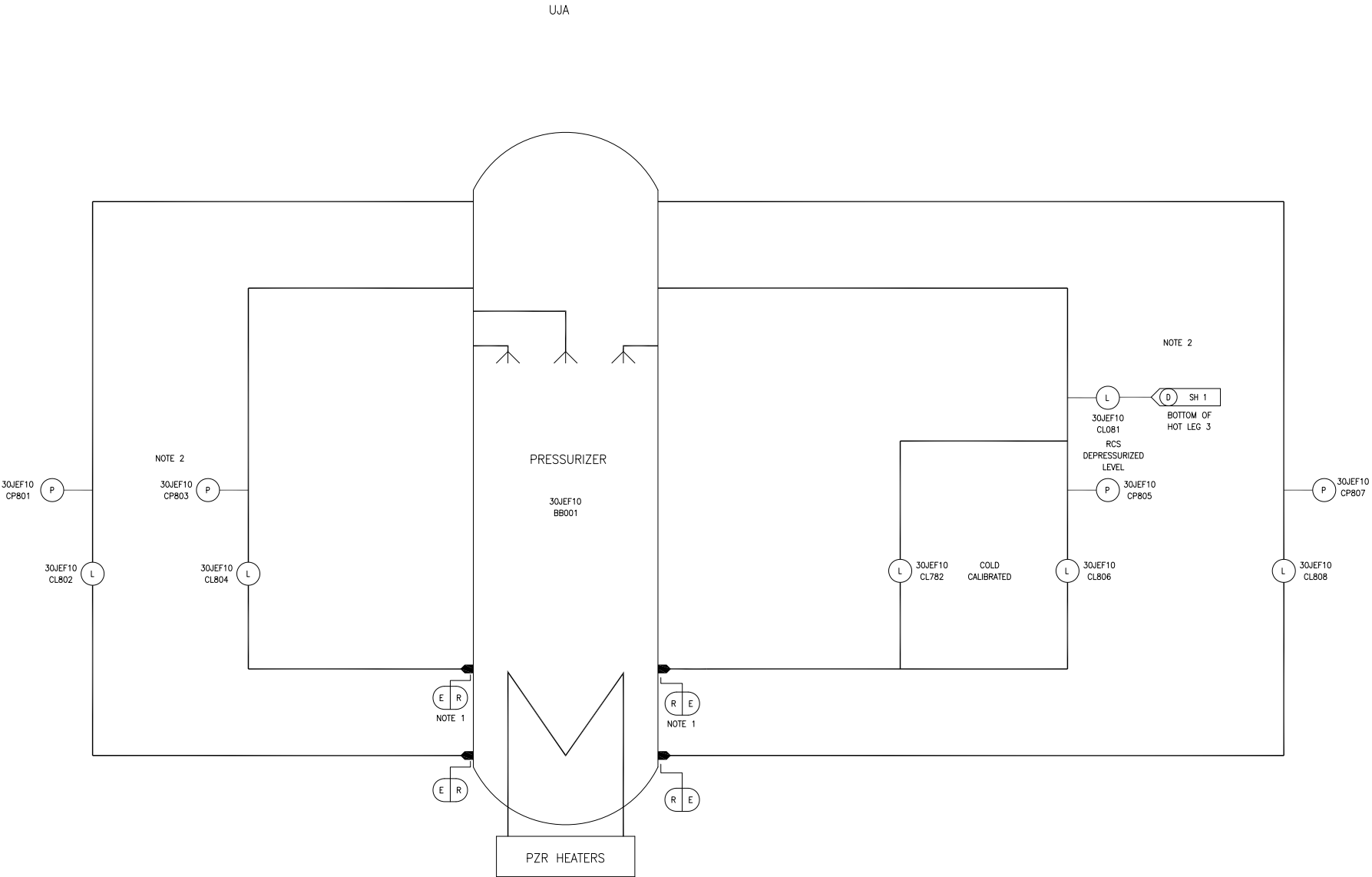
Sheet 3 of 7



Figure 5.1-4—RCS Piping and Instrumentation Diagram
Sheet 4 of 7



Figure 5.1-4—RCS Piping and Instrumentation Diagram
Sheet 5 of 7



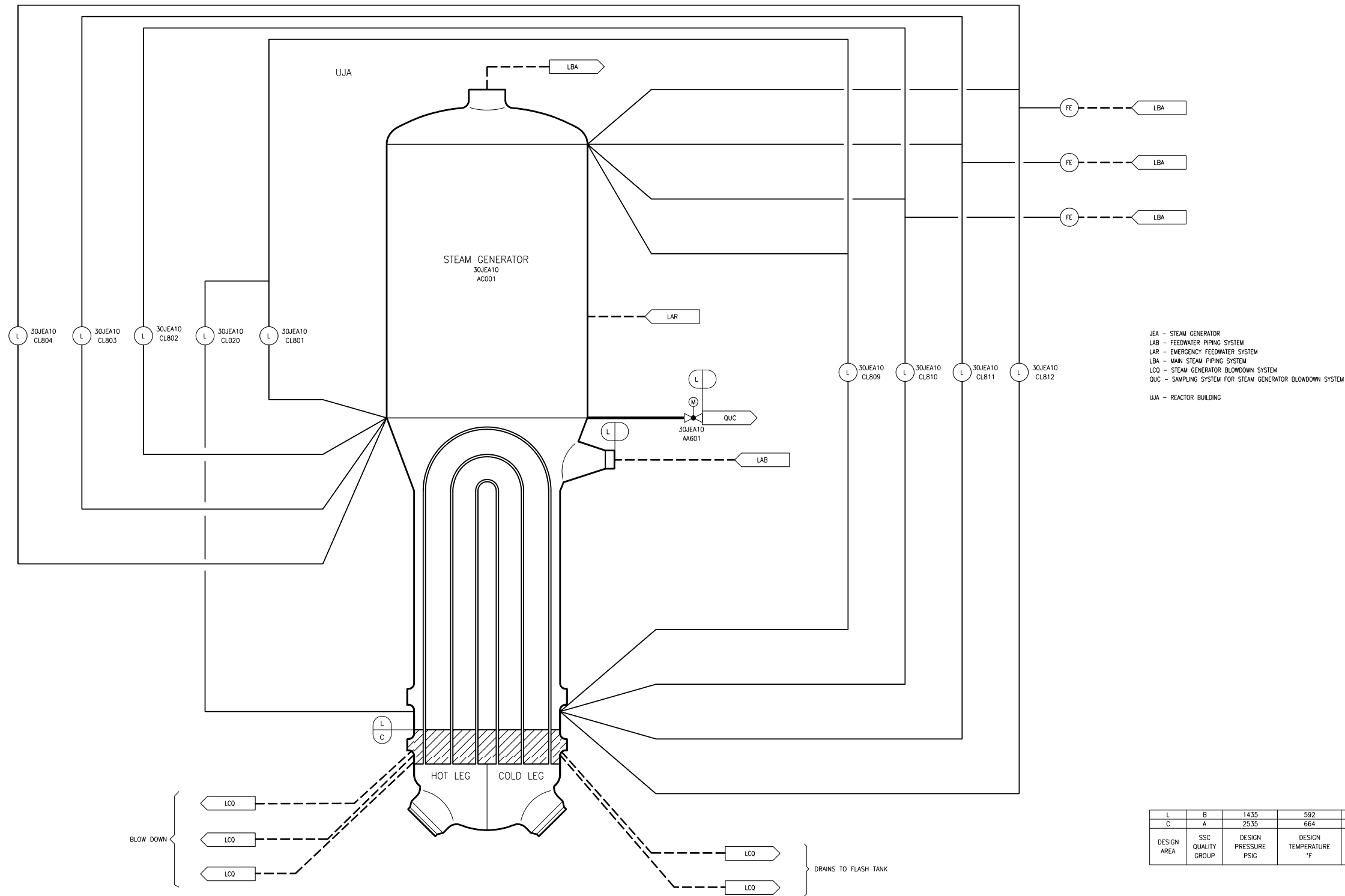
JEF – REACTOR COOLANT PRESSURIZING SYSTEM
UJA – REACTOR BUILDING

- NOTES:
- 1. FLOW RESTRICTOR INTEGRATED IN THE NOZZLE ALLOWS CONNECTION LINES TO BE QUALITY GROUP B.
 - 2. CLASS BREAK TO QUALITY GROUP B AT CONDENSATE POT (NOT SHOWN).

R	A	2535	684	I
E	B	2535	684	I
DESIGN AREA	SSC QUALITY GROUP	DESIGN PRESSURE PSIG	DESIGN TEMPERATURE °F	SSC SEISMIC CLASS

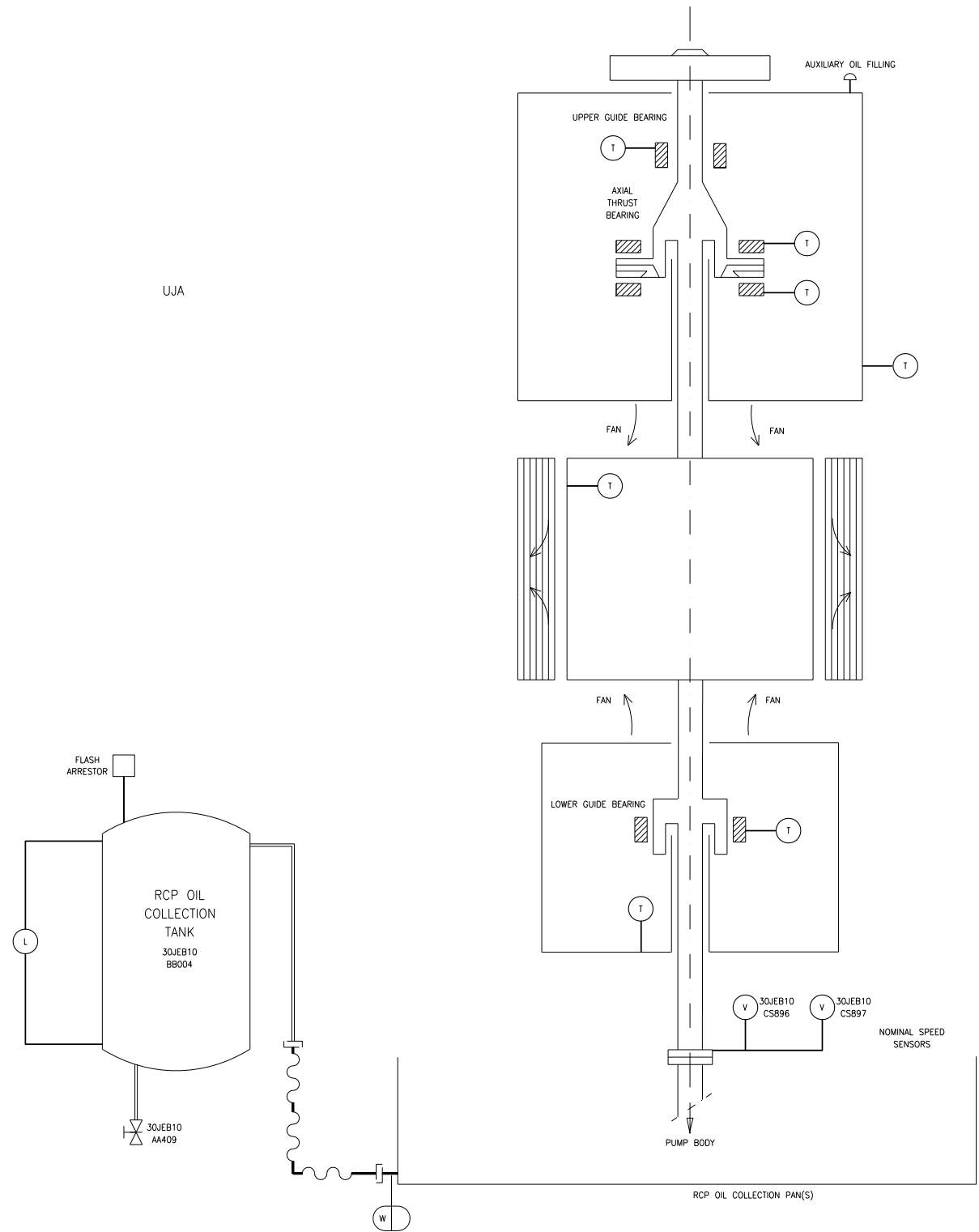
REV 002
JEX05T2

Figure 5.1-4—RCS Piping and Instrumentation Diagram
Sheet 6 of 7



JEX06T2

Figure 5.1-4—RCS Piping and Instrumentation Diagram
Sheet 7 of 7



JEB - REACTOR COOLANT PUMP
UJA - REACTOR BUILDING

W	D	15	185	II
DESIGN AREA	SSC QUALITY GROUP	DESIGN PRESSURE PSIG	DESIGN TEMPERATURE °F	SSC SEISMIC CLASS

JEX07T2