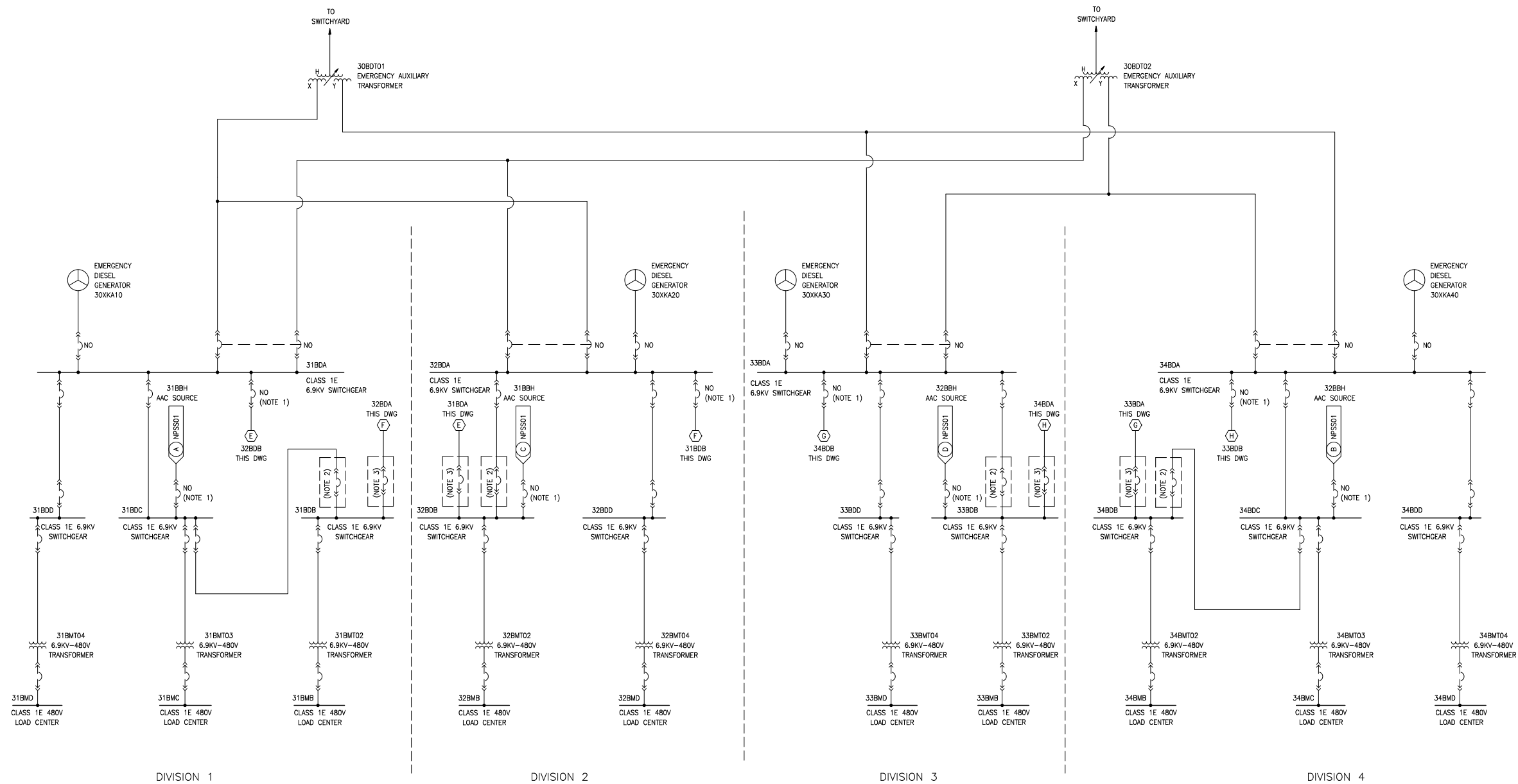


Figure 2.5.1-1—Emergency Power Supply System Functional Arrangement
Sheet 1 of 3



- NOTES:
1. NORMALLY OPEN AND MANUALLY OPERATED BREAKER.
 2. CIRCUIT BREAKER IS NORMALLY IN SERVICE AS SHOWN. BREAKER IS DISCONNECTED DURING ALTERNATE FEED IMPLEMENTATION.
 3. ALTERNATE FEED IMPLEMENTED IN THIS CUBICLE. AN INTERLOCK DESIGN IS USED TO PREVENT PARALLEL FEEDS TO A BUS.

REV 002
EPSS01T1

NOTES:

1. NORMALLY OPEN AND MANUALLY OPERATED BREAKER.
2. CIRCUIT BREAKER IS NORMALLY IN SERVICE AS SHOWN. BREAKER IS DISCONNECTED DURING ALTERNATE FEED IMPLEMENTATION.
3. ALTERNATE FEED IMPLEMENTED IN THIS CUBICLE. AN INTERLOCK DESIGN IS USED TO PREVENT PARALLEL FEEDS TO A BUS.
4. FOR CONNECTIONS TO EMERGENCY AUXILIARY TRANSFORMERS SEE DWG EPPS01.
5. TYPICAL OF ONE OR MORE.

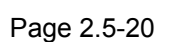
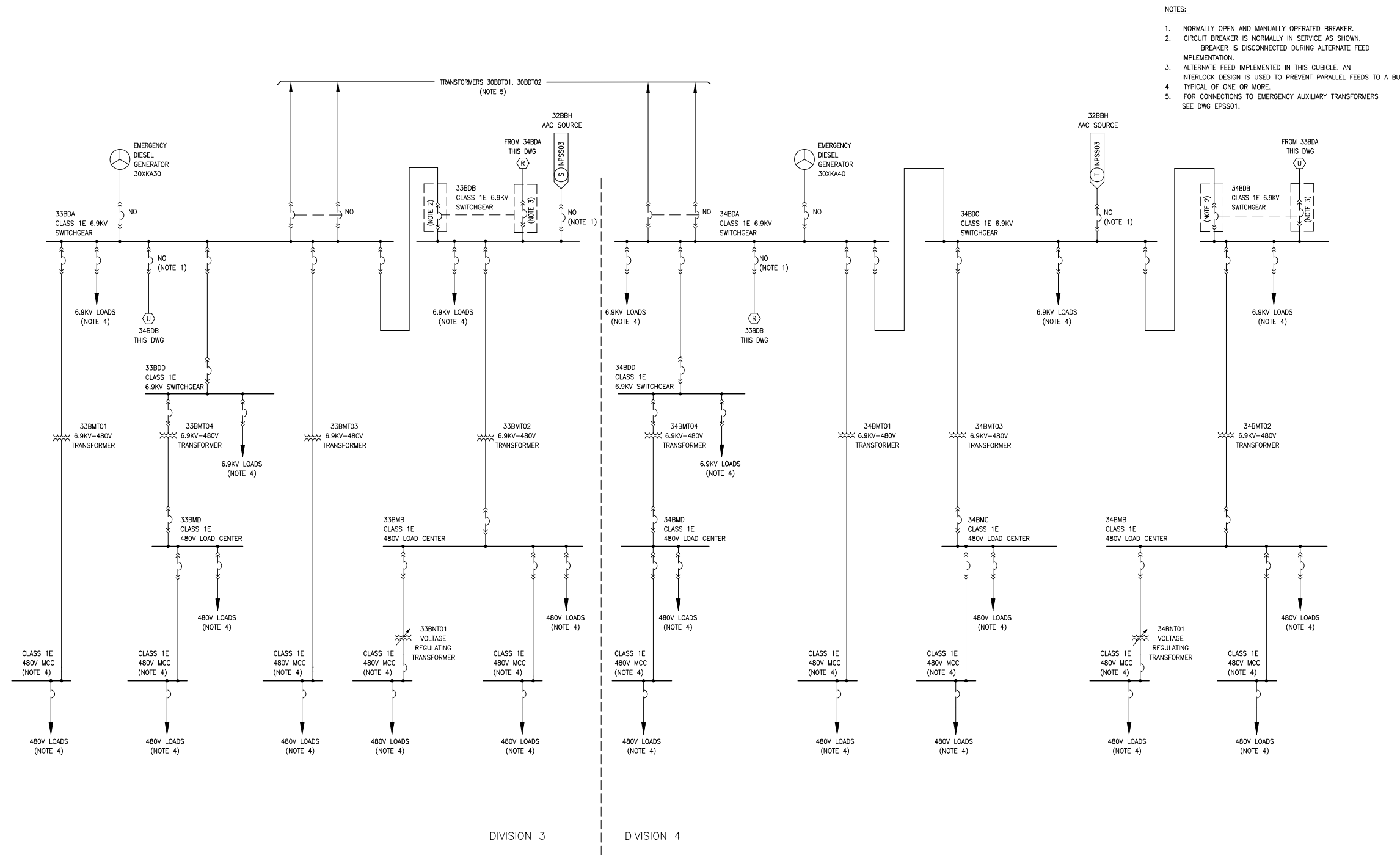


Figure 2.5.1-1—Emergency Power Supply System Functional Arrangement
Sheet 3 of 3



REV 002
EPSS03T1