

# Verification Monitoring Report for the Durango, Colorado, Processing Site

December 2012



U.S. DEPARTMENT OF  
**ENERGY**

Legacy  
Management

*FSME 20*

This page intentionally left blank

**Verification Monitoring Report for the  
Durango, Colorado, Processing Site**

**December 2012**

This page intentionally left blank



# Contents

|   |     |
|---|-----|
| Abbreviations.....                      | iii |
| 1.0 Introduction.....                   | 1   |
| 1.1 Compliance Strategy.....            | 1   |
| 1.2 Purpose.....                        | 1   |
| 1.3 Summary.....                        | 5   |
| 2.0 Site Conditions.....                | 5   |
| 2.1 Hydrogeology.....                   | 5   |
| 2.1.1 Mill Tailings Area.....           | 5   |
| 2.1.2 Raffinate Ponds Area.....         | 6   |
| 2.2 Water Quality.....                  | 6   |
| 2.3 Surface Remediation Activities..... | 8   |
| 2.4 Water and Land Use.....             | 8   |
| 2.5 Institutional Controls.....         | 8   |
| 3.0 Monitoring Program.....             | 9   |
| 4.0 Results of 2012 Monitoring.....     | 11  |
| 4.1 Groundwater.....                    | 11  |
| 4.1.1 Mill Tailings Area.....           | 11  |
| 4.1.1.1 Cadmium.....                    | 11  |
| 4.1.1.2 Manganese.....                  | 12  |
| 4.1.1.3 Molybdenum.....                 | 12  |
| 4.1.1.4 Selenium.....                   | 19  |
| 4.1.1.5 Sulfate.....                    | 19  |
| 4.1.1.6 Uranium.....                    | 19  |
| 4.1.2 Raffinate Ponds Area.....         | 26  |
| 4.1.2.1 Selenium.....                   | 26  |
| 4.1.2.2 Uranium.....                    | 26  |
| 4.2 Surface Water.....                  | 28  |
| 5.0 Natural Flushing Assessment.....    | 28  |
| 6.0 References.....                     | 28  |

# Figures

|  |    |
|--|----|
| Figure 1. Former Durango Processing Site, Durango, Colorado.....   | 2  |
| Figure 2. Surface Water and Groundwater Sampling Locations at the Mill Tailings Area<br>at the Durango, CO, Processing Site..... | 3  |
| Figure 3. Surface Water and Groundwater Sampling Locations at the Raffinate Ponds Area,<br>Durango, CO, Processing Site.....     | 4  |
| Figure 4. Distribution of Cadmium at the Mill Tailings Area in June and September 2012.....                                      | 13 |
| Figure 5. Historical Cadmium Concentrations in Groundwater at the Mill Tailings Area.....  | 14 |
| Figure 6. Predicted and Measured Cadmium Concentrations at the Mill Tailings Area.....   | 14 |
| Figure 7. Distribution of Manganese at the Mill Tailings Area in June 2012.....  | 15 |
| Figure 8. Historical Concentrations of Manganese at the Mill Tailings Area.....  | 16 |
| Figure 9. Predicted and Measured Manganese Concentrations at the Mill Tailings Area.....   | 16 |
| Figure 10. Distribution of Molybdenum at the Mill Tailings Area in June and<br>September 2012.....                               | 17 |

|  |    |
|--|----|
| Figure 11. Historical Concentrations of Molybdenum at the Mill Tailings Area .....             | 18 |
| Figure 12. Predicted and Measured Molybdenum Concentrations at the Mill Tailings Area.....     | 18 |
| Figure 13. Distribution of Selenium at the Mill Tailings Area in June and September 2012 ..... | 20 |
| Figure 14. Historical Selenium Concentrations in Groundwater at the Mill Tailings Area.....    | 21 |
| Figure 15. Predicted and Measured Selenium Concentrations at the Mill Tailings Area .....      | 21 |
| Figure 16. Distribution of Sulfate at the Mill Tailings Area in June 2012.....                 | 22 |
| Figure 17. Historical Concentrations of Sulfate at the Mill Tailings Area .....                | 23 |
| Figure 18. Predicted and Measured Sulfate Concentrations at the Mill Tailings Area.....        | 23 |
| Figure 19. Distribution of Uranium at the Mill Tailings Area in June and September 2012.....   | 24 |
| Figure 20. Historical Concentrations of Uranium at the Mill Tailings Area .....                | 25 |
| Figure 21. Predicted and Measured Uranium Concentrations at the Mill Tailings Area.....        | 25 |
| Figure 22. Historical Selenium Concentrations in Groundwater at the Raffinate Ponds Area ....  | 27 |
| Figure 23. Historical Uranium Concentrations in Groundwater at the Raffinate Ponds Area.....   | 27 |

## Tables

|   |    |
|---|----|
| Table 1. Current Groundwater Contaminants and Compliance Goals for the Mill Tailings Area.....                    | 7  |
| Table 2. Current Concentrations in the Animas River.....  | 8  |
| Table 3. Annual Groundwater and Surface Water Compliance Monitoring Requirements for the Mill Tailings Area ..... | 10 |
| Table 4. Summary of Monitoring Practices at the Raffinate Ponds Area.....   | 10 |
| Table 5. Model-Predicted Groundwater Restoration Times for the Mill Tailings Area.....                            | 11 |

## Appendixes

|            |   |
|------------|---|
| Appendix A | Durango Mill Tailings Processing Site (DUR01) Groundwater and Surface Water Quality Data  |
| Appendix B | Durango Raffinate Pond Processing Site (DUR02) Groundwater and Surface Water Quality Data |

## Abbreviations

|                      |                                      |
|----------------------|--------------------------------------|
| ACL                  | alternate concentration limit        |
| CFR                  | <i>Code of Federal Regulations</i>   |
| cfs                  | cubic feet per second                |
| DOE                  | U.S. Department of Energy            |
| EPA                  | U.S. Environmental Protection Agency |
| ft                   | feet                                 |
| ft <sup>3</sup> /day | cubic feet per day                   |
| GCAP                 | Ground Water Compliance Action Plan  |
| MCL                  | maximum concentration limit          |
| mg/L                 | milligrams per liter                 |
| POC                  | point-of-compliance                  |

This page intentionally left blank

## **1.0 Introduction**

The Durango processing site is located in La Plata County, Colorado, approximately 0.25 mile southwest of the central business district of Durango, Colorado (Figure 1). The site consists of two separate areas: (1) the mill tailings area, which is the setting of former uranium-ore milling and storage of mill tailings, as well as a lead smelter plant that operated previous to the uranium mill, and (2) a raffinate ponds area where liquid process-wastes were impounded during milling operations. The former mill tailings area encompasses about 40 acres on a bedrock-supported river terrace between Smelter Mountain to the west, the Animas River to the east, and Lightner Creek to the north (Figure 2). The raffinate ponds area occupies about 20 acres on a separate river terrace located 1,500 feet (ft) south (downstream) of the mill tailings area (Figure 3).

### **1.1 Compliance Strategy**

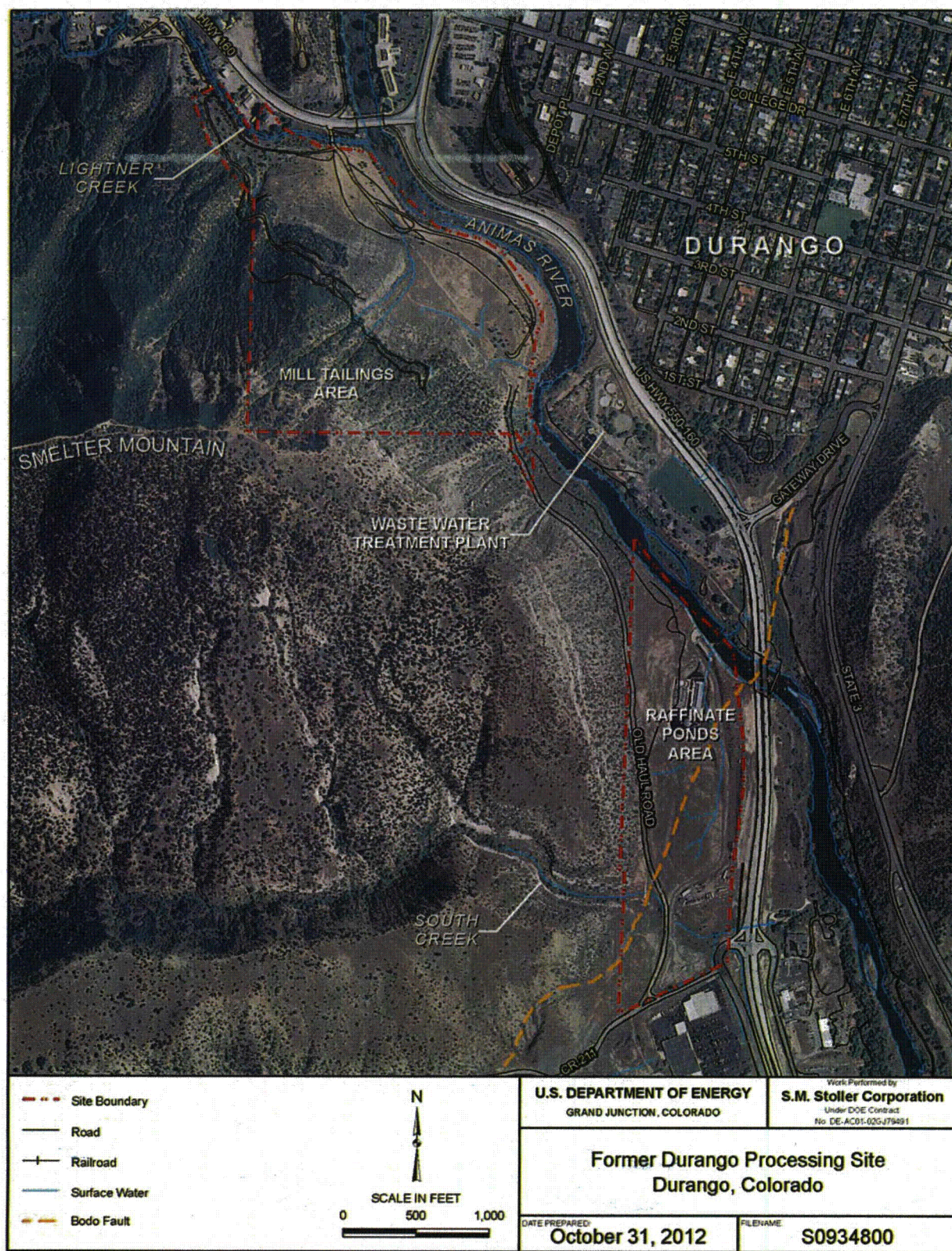
The compliance strategy for groundwater cleanup at the former mill tailings area of the Durango site is natural flushing for all the contaminants of concern except selenium, which has an alternate concentration limit (ACL). The implementation of this strategy includes water quality monitoring and the use of institutional controls to prevent exposure to contaminated groundwater (DOE 2003). This strategy was based in part on groundwater flow and solute transport modeling that predicted acceptable cleanup times for each contaminant, except possibly cadmium, by natural flushing of groundwater after the mill tailings (contaminant source) was removed in 1991. Baseline conditions of contaminant concentration in the model correspond to results of the June 2002 groundwater sampling. The groundwater model is documented in the Site Observational Work Plan (DOE 2002).

The compliance strategy for the raffinate ponds area consists of no further action, in conjunction with supplemental standards based on limited use (poor quality) groundwater. Groundwater monitoring is conducted as a best management practice. Monitoring results for the raffinate ponds area are also presented in this report.

### **1.2 Purpose**

The primary purpose of this verification monitoring report is to evaluate the observed progress of passive groundwater restoration at the Durango mill tailings area. The evaluation involves comparing observed constituent concentrations through June 2012 with model-predicted concentrations for the same time period. The goal is to evaluate if natural flushing is progressing as predicted and if it remains a viable compliance strategy for the site.

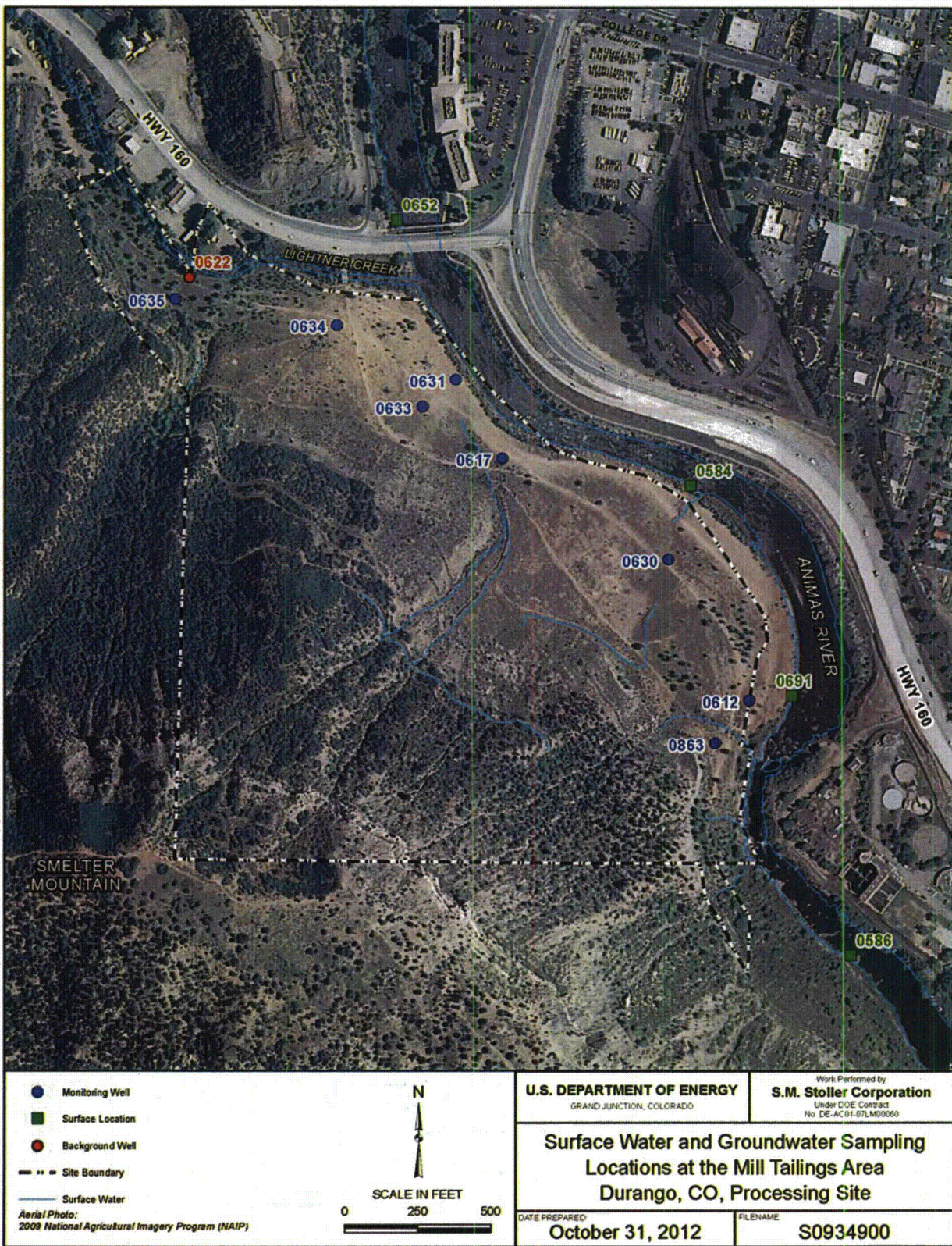




\\gull\env\projects\EBM\ITS\1111006201\009\S093480\S0934800.mxd brown 10/31/2012 10:42:36 AM

Figure 1. Former Durango Processing Site, Durango, Colorado







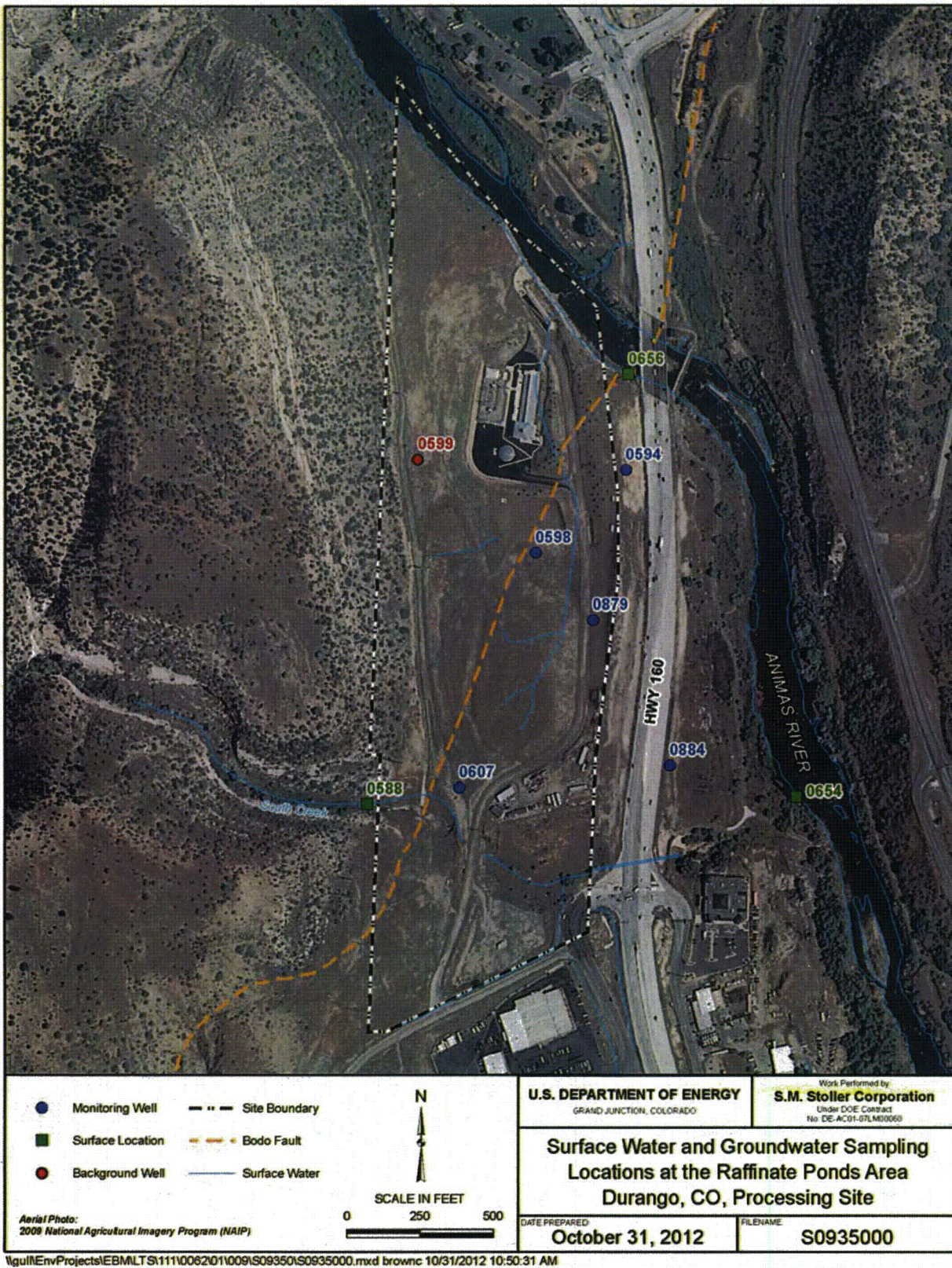


Figure 3. Surface Water and Groundwater Sampling Locations at the Raffinate Ponds Area, Durango, CO, Processing Site



## 1.3 Summary

Evaluation of monitoring data through June 2012 and trend analysis of contaminant levels at site wells indicate that natural flushing remains a viable compliance strategy for the mill tailings area of the Durango processing site. The constituent concentration trends at several wells also appear to generally match model predictions. Cadmium concentrations are below the compliance goal for all locations except well 0612. Trend analysis suggests the concentration of this constituent will be below the compliance goal within a 100-year time frame. The compliance goal for manganese is also only exceeded at well 0612, and trend analysis indicates that the concentration of this constituent also will meet the compliance goal within 100 years. Well 0612 was completed through a slag pile from the lead smelter. Concentrations of cadmium and uranium that exceed compliance goals at well 0612 are believed to be associated with the alluvial material below the slag that remained in place after surface remediation. A small lens of uranium precipitate below the slag was thought to be a result of an old spill on the slag pile that was slowly leaching through the slag. Molybdenum concentrations are below the compliance goal at all wells, and selenium concentrations are below the compliance goal for all locations except at well 0633. Concentrations in well 0633 could be attributable to leaching of naturally occurring selenium in shale bedrock underlying the site. Sulfate and uranium concentrations exceed the compliance goals at all locations except at wells 0863, 0631, and 0635 for sulfate and wells 0863, 0635, and 0634 for uranium. Despite these exceedances, trend analyses of existing concentration data and model predictions suggests that it is still possible for sulfate and uranium to meet the compliance goals within 100 years.

## 2.0 Site Conditions

### 2.1 Hydrogeology

#### 2.1.1 Mill Tailings Area

The uppermost aquifer at the mill tailings area is shallow and consists mostly of poorly sorted colluvium derived from Smelter Mountain, which rises steeply to the southwest. A portion of the shallow aquifer also comprises alluvial deposits associated with the Animas River and Lightner Creek. The colluvium and alluvium are underlain by the low-permeability Mancos Shale bedrock, which essentially acts as a hydraulic barrier that prevents downward migration of contaminants from the shallow groundwater system. Approximately 70 ft of colluvium overlies bedrock along the base of Smelter Mountain. These deposits thin eastward to about 15 ft in thickness close to the Animas River. Depth to groundwater increases from about 5 ft on the river terrace to about 60 ft near the mountain front. The saturated zone is thin (less than 10 ft thick), unconfined, of limited extent, and of low yield. Groundwater flow is generally to the southeast, parallel to the Animas River, at an average gradient of approximately 0.02 ft/ft. Hydraulic conductivity of the colluvium and alluvium ranges from 10 to 70 ft/day.

The colluvium is recharged primarily by runoff from Smelter Mountain and infiltrating precipitation, and the river alluvium receives inflow from Lightner Creek and from river loss along the upstream reach of a prominent river meander that defines the middle third of the mill tailings area's east boundary. Groundwater discharges to the Animas River along the upper and lower thirds of the river reach adjacent to the mill tailings area. Under average conditions, the

estimated volume of groundwater discharge from the mill tailings area is 1,480 cubic feet per day ( $\text{ft}^3/\text{day}$ ); approximately 840  $\text{ft}^3/\text{day}$  of this total enters the Animas River near the mouth of Lightner Creek, and the remaining 640  $\text{ft}^3/\text{day}$  enters the Animas River east and southeast of the footprint of a former tailings pile (DOE 2002). The alluvium and colluvium pinch out against bedrock cliffs near the southeast corner of the site, at which point groundwater discharge to the river is complete (DOE 2002).

### 2.1.2 Raffinate Ponds Area

Groundwater in the raffinate ponds area occurs in two bedrock units, both members of the Mesaverde Group, that are separated by the northeast-trending Bodo Fault (Figure 3). The Point Lookout Sandstone, the basal formation of the Mesaverde Group, lies south of the fault and is divided into two members: a lower transitional member consisting of interbedded lenticular sandstones and shales, and an upper massive sandstone member. The Menefee Formation, north of the fault, consists of massive sandstone and shale along with beds of carbonaceous shale and coal. The Bodo Fault, a normal fault, dips to the southeast at approximately 55 degrees. The Point Lookout Sandstone is downthrown approximately 200 ft along the fault.

Groundwater in the raffinate ponds area is assumed to be unconfined. It is recharged by infiltration of precipitation and runoff from the Smelter Mountain area and the ephemeral South Creek. Eastward-flowing subsurface water also enters the groundwater system near the intersection of Bodo Fault and South Creek (Figure 3). Hydraulic conductivity data indicate that the Point Lookout Sandstone is the least conductive of the various bedrock units underlying the raffinate ponds area. The lower member (predominantly shale and siltstone) of the Point Lookout Sandstone is considered an aquitard. The Menefee Formation consists of mostly low-conductivity sandstone but is relatively permeable where fractures or lenticular coal beds are present. The largest hydraulic conductivities appear to occur near Bodo Fault and in the coal beds within the Menefee.

## 2.2 Water Quality

Groundwater in the alluvial aquifer at the mill tailings area is contaminated as a result of uranium-ore processing and onsite tailings piles. Although the primary source of groundwater contamination (mill tailings) was removed from the site by 1991, concentrations of arsenic, cadmium, lead, molybdenum, gross alpha activity (excluding radon and uranium), radium-226+228, selenium, and uranium remaining in the underlying aquifer exceeded maximum concentration limits (MCLs) established in Title 40 *Code of Federal Regulations* Part 192 (40 CFR 192) for sites regulated under the Uranium Mill Tailings Radiation Control Act. Concentrations of arsenic, lead, and radium have since decreased to levels below the MCLs, and gross alpha activity was detected only sporadically in a few wells. Monitoring for arsenic, lead, radium, and alpha activity was discontinued in 2002 in accordance with provisions of the Ground Water Compliance Action Plan (GCAP) (DOE 2003).

Table 1 compares the maximum concentrations of the remaining site contaminants detected in June 2012 to the corresponding compliance goals for the mill tailings area. The compliance goals for cadmium, molybdenum, and uranium are 40 CFR 192 MCLs. The compliance goal for selenium (0.05 milligram per liter [ $\text{mg/L}$ ]) is adopted from the U.S. Environmental Protection Agency (EPA) Safe Drinking Water Act as an ACL (the 40 CFR 192 MCL is 0.01  $\text{mg/L}$ ). An ACL was established for selenium because selenium occurs naturally in groundwater beneath the

site at levels above the 40 CFR 192 MCL. There are no MCLs for manganese and sulfate. The compliance goal for manganese is the EPA drinking water equivalent level. This is a lifetime exposure concentration that is protective of adverse, non-cancer health effects; it assumes that all of the exposure to a contaminant is from drinking water (EPA 2004). The sulfate goal is equivalent to its average background concentration in local groundwater.

*Table 1. Current Groundwater Contaminants and Compliance Goals for the Mill Tailings Area*

| <b>Contaminant of Concern</b> | <b>Compliance Goal (mg/L)</b> | <b>Compliance Goal Source</b>              | <b>Maximum Concentration Observed in June 2012 (mg/L)</b> |
|-------------------------------|-------------------------------|--|---|
| Cadmium                       | 0.01                          | 40 CFR 192 MCL                             | 0.057   |
| Manganese                     | 1.6                           | Drinking Water Equivalent Level (EPA 2004) | 6.1   |
| Molybdenum                    | 0.1                           | 40 CFR 192 MCL                             | 0.094   |
| Selenium                      | 0.05                          | ACL (DOE 2003)                             | 0.017   |
| Sulfate                       | 1,276                         | Average Background (DOE 2002)              | 3,600   |
| Uranium                       | 0.044                         | 40 CFR 192 MCL (activity based)            | 1.3   |

Bedrock groundwater at the raffinate ponds area qualifies for supplemental standards on the basis of limited use groundwater as defined in 40 CFR 192. The groundwater in the bedrock is classified as limited use because of widespread, elevated concentrations of naturally occurring selenium. Selenium concentrations exceed the MCL at background monitoring well 0599 by a factor of nearly nine. Additional evidence of the natural presence of selenium beneath the raffinate ponds area is presented in Section 5.4 of the Site Observational Work Plan (DOE 2002). Because supplemental standards apply to groundwater in the raffinate ponds area, no numerical compliance goals have been established for that portion of the site.

Current monitoring of the Animas River verifies previous findings in the Baseline Risk Assessment (DOE 1995) that past milling operations have negligible effect on surface water quality. Surface water sampling for 2012 was conducted in September instead of June to determine whether concentrations are higher during low flow conditions in the river. The daily mean flow at the U.S. Geological Survey gaging station up stream of the site was 168 cubic feet per second (cfs) for September 18, 2012 compared to June 28, 2011 which was 2,810 cfs. The uranium and molybdenum results were an order of magnitude higher for the September 2012 monitoring than they were for the previous June for all locations, including background. The selenium and cadmium results were equivalent or lower in September 2012. All of the concentrations are still indistinguishable from the upstream (background) location and are well below levels of concern (Table 2).

Table 2. Current Concentrations in the Animas River

| Area            | Location | Cadmium (mg/L) |                      | Molybdenum (mg/L) |                      | Selenium (mg/L) |                | Uranium (mg/L) |                |
|-----------------|----------|----------------|----------------------|-------------------|----------------------|-----------------|----------------|----------------|----------------|
|                 |          | June 2011      | September 2012       | June 2011         | September 2012       | June 2011       | September 2012 | June 2011      | September 2012 |
| Background      | 0652     | 0.00019        | 0.00014 <sup>a</sup> | 0.00034           | 0.00189 <sup>a</sup> | 0.00034         | Non-Detect     | 0.00020        | 0.00158        |
| Mill Tailings   | 0584     | 0.00020        | 0.00013 <sup>a</sup> | 0.00049           | 0.00202 <sup>a</sup> | 0.00049         | Non-Detect     | 0.00019        | 0.00165        |
| Mill Tailings   | 0586     | 0.00034        | 0.00013 <sup>a</sup> | 0.00044           | 0.00200 <sup>a</sup> | 0.00044         | Non-Detect     | 0.00022        | 0.00167        |
| Mill Tailings   | 0691     | 0.00012        | 0.00012 <sup>a</sup> | 0.00026           | 0.00204 <sup>a</sup> | 0.00026         | Non-Detect     | 0.00025        | 0.00171        |
| Raffinate Ponds | 0654     | 0.00022        | Non-Detect           | 0.00037           | 0.00204 <sup>a</sup> | 0.00015         | Non-Detect     | 0.00032        | 0.00170        |
| Raffinate Ponds | 0656     | 0.00030        | 0.00011 <sup>a</sup> | 0.00026           | 0.00196 <sup>a</sup> | 0.00018         | Non-Detect     | 0.00021        | 0.00165        |

<sup>a</sup> Lab qualifier indicates that the analyte was also found in the method blank.

## 2.3 Surface Remediation Activities

The U.S. Department of Energy (DOE) began surface cleanup of the mill tailings and raffinate ponds areas in November 1986 to meet the EPA standards for radium in soil. A total of 2.5 million cubic yards of contaminated material was relocated to the Bodo Canyon disposal cell several miles southwest of the Durango site. Supplemental cleanup standards were applied to steep slopes of Smelter Mountain and two regions bordering the Animas River. In addition, a thin lens of uranium precipitate, thought to have resulted from an old spill on the slag pile and was slowly leaching through the slag, was left in place at the mill tailings area below layers of slag along portions of the river. The slag deposits, which are 10 to 15 ft thick in some areas (including the location of well 0612), are from a lead smelter that operated on the site from 1880 to 1930. To restore the site, approximately 230,000 cubic yards of uncontaminated soil was backfilled, contoured, and seeded. Riprap was placed in some sensitive areas along the Animas River to prevent erosion. Remedial action was completed in May 1991.

## 2.4 Water and Land Use

The primary water source for the city of Durango is the Florida River upstream of its confluence with the Animas River. Additional water is withdrawn from the Animas River during high-demand periods (usually during the summer) from a location approximately 2 miles upstream of the mill tailings area. The Animas River bordering the mill tailings area of the Durango site is popular for seasonal boating and fishing. Development plans for both the mill tailings area and the raffinate ponds area do not include residential use (DOE 2002).

## 2.5 Institutional Controls

As part of the compliance strategy, public health will be protected at the mill tailings area during the natural flushing period through an environmental covenant between the State of Colorado and the City of Durango (landowner) that restricts access to contaminated alluvial groundwater. Additionally, deed restrictions (which serve as a notice to the public) for the mill tailings area prohibit access to groundwater without written permission from DOE and the Colorado Department of Public Health and Environment. Groundwater use in the raffinate ponds area is restricted in perpetuity through a deed restriction that also requires DOE's permission before use.



of groundwater for any purpose. The State of Colorado is currently in the process of trying to obtain a signed environmental covenant agreement for the raffinate ponds area.

### **3.0 Monitoring Program**

The annual groundwater and surface water monitoring of the processing site was established in the GCAP (DOE 2003). The GCAP specifies that monitoring will continue for the first 5 years following U.S. Nuclear Regulatory Commission concurrence with the GCAP. Monitoring for cadmium at the mill tailings area will continue annually for the first 10 years following concurrence because of the greater uncertainty about whether this constituent will flush naturally within the allotted 100-year period established in 40 CFR 192. Monitoring data obtained through the initial 5-year period will measure the progress of natural flushing of the constituents listed in Table 1. The GCAP specifies that after the 5-year annual monitoring period, the scope of subsequent monitoring will be addressed in a Long-Term Management Plan. Although the U.S. Nuclear Regulatory Commission has not yet approved the GCAP, DOE has adopted the recommended monitoring approach specified in this document. The 5- and 10-year time frames will begin when concurrence is obtained.

At the mill tailings area, monitoring wells 0612, 0617, 0630, 0631, 0633, 0634, 0635, and 0863 have been established as point-of-compliance (POC) wells that will be used to monitor the progress of natural flushing in groundwater in the alluvial aquifer (Figure 2). In accordance with provisions of the GCAP, natural flushing for a given analyte is complete when its concentration no longer exceeds the compliance goal at all POC wells for three consecutive annual sampling events. Monitoring for that constituent may then be discontinued.

Surface water locations 0652, 0584, 0691, and 0586, located along the Animas River, will be sampled to verify continued protection of the aquatic environment (Figure 2). The rationale and requirements for compliance monitoring in the mill tailings area are summarized in Table 3.

Groundwater and surface water monitoring of the raffinate ponds area is being conducted only as a best management practice, and no POC wells have been established. Monitoring practices are summarized in Table 4.

**Table 3. Annual Groundwater and Surface Water Compliance Monitoring Requirements  
for the Mill Tailings Area**

| Sampling Location                        | Monitoring Purpose                                   | Analytes   | Location  |
|--|--|--|---|
| <b>Groundwater Monitoring</b>            |  |  |   |
| 0617, 0630,<br>0631, 0633,<br>0634, 0635 | POC/verify natural flushing                          | Manganese<br>Molybdenum<br>Selenium<br>Sulfate<br>Uranium            | Onsite  |
| 0612, 0863                               | POC/verify natural flushing; verify cadmium flushing | Cadmium<br>Manganese<br>Molybdenum<br>Selenium<br>Sulfate<br>Uranium | Onsite downgradient                               |
| <b>Surface Water Monitoring</b>          |  |  |   |
| 0652                                     | Surface water background                             | Cadmium<br>Molybdenum<br>Selenium<br>Uranium                         | Offsite upstream                                  |
| 0584, 0691                               | Verify no site-related increase above background     |  | Offsite; site groundwater discharge area          |
| 0586                                     | Verify no site-related increase above background     |  | Offsite; downstream of site groundwater discharge |

**Table 4. Summary of Monitoring Practices at the Raffinate Ponds Area**

| Sampling Location             | Monitoring Purpose   | Analytes            | Location             |
|-------------------------------|--|---------------------|----------------------|
| 0879, 0594<br>(replaced 0880) | Monitor concentrations in groundwater in the shallow bedrock.                  | Selenium<br>Uranium | Onsite               |
| 0598                          | Monitor concentrations in groundwater in the deep bedrock and Bodo Fault zone. | Selenium<br>Uranium | Onsite               |
| 0607                          | Monitor concentrations in groundwater entering the site.                       | Selenium<br>Uranium | Onsite               |
| 0884                          | Monitor offsite downgradient concentrations and migration.                     | Selenium<br>Uranium | Offsite downgradient |
| 0588                          | Surface water quality entering the site.                                       | Selenium<br>Uranium | Offsite upgradient   |
| 0654, 0656                    | Downgradient surface water concentrations.                                     | Selenium<br>Uranium | Offsite downgradient |

## 4.0 Results of 2012 Monitoring

Table 5 summarizes the amount of time the model predicts for natural flushing to achieve the compliance goals for cadmium, manganese, molybdenum, selenium, sulfate, and uranium in groundwater. The progress of each constituent, based on water quality data from August 1992 through June 2012, is addressed separately in the following subsections. June 2002 was established as the groundwater model baseline condition (time zero) for contaminant transport. The predicted compliance times, listed in Table 5, are based on the predicted maximum average contaminant concentrations and the probability that the standard will be exceeded. The compliance times differ because the contaminants initially were not distributed evenly and vary in the degree that concentrations exceed respective compliance goals, and because each contaminant varies in its mobility in groundwater.

Table 5. Model-Predicted Groundwater Restoration Times for the Mill Tailings Area

| Analyte    | Compliance Goal (mg/L) | Predicted Time to Meet Compliance (years) <sup>a,b</sup> |
|------------|------------------------|--|
| Cadmium    | 0.01                   | >100   |
| Manganese  | 1.6                    | 70   |
| Molybdenum | 0.1                    | 5  |
| Selenium   | 0.05                   | 60   |
| Sulfate    | 1,276                  | 100  |
| Uranium    | 0.044                  | 90   |

<sup>a</sup> Source: DOE 2002, Appendix G, Table 18.

<sup>b</sup> Model time zero (baseline) is June 2002.

Plots of model-predicted compliance times are based on single, steady-state, deterministic simulations conducted for the GCAP (DOE 2003) and were run again for the 2010 Verification Monitoring Report at individual wells. These plots continue to show mixed results; some 2012 sampling data show concentrations above those predicted by the model, and others are consistent with model predictions.

### 4.1 Groundwater

#### 4.1.1 Mill Tailings Area

Groundwater was sampled from the eight POC locations (Figure 2) and analyzed for constituents shown in Table 3. Sampling results for 2012 are provided in Appendix A and are discussed below by constituent.

##### 4.1.1.1 Cadmium

Figure 4 is a map view of the site showing the concentration of cadmium in groundwater at the compliance wells in June 2012 and in surface water in September 2012. Figure 5 shows observed cadmium concentrations versus time at the compliance wells since completion of remedial action in 1991. Cadmium levels exceeded the MCL at well 0612. The remaining monitoring wells contained only trace levels of this constituent. Groundwater modeling predicted a flushing period greater than 100 years for cadmium (Table 5). This result is not consistent with historical trending at well 0612, which, if projected linearly from 1992 beyond June 2012 implies

compliance for cadmium by about 2078 (Figure 6). This prediction is farther out than the linear projection in 2011; however, it still projects flushing within the 100-year time frame. Projecting this trend too far into the future might underestimate the actual flushing period because of transport processes that lead to a “tailing” of the predicted concentrations at the end of the process. This tailing phenomenon is commonly observed in nature and is predicted by the solute transport models. Natural flushing of cadmium, however, remains a potential strategy because of the very limited distribution of cadmium at the site. Since it is early in the 100-year natural flushing time frame, DOE will continue to monitor cadmium concentrations in groundwater and will reevaluate the strategy later, if required.

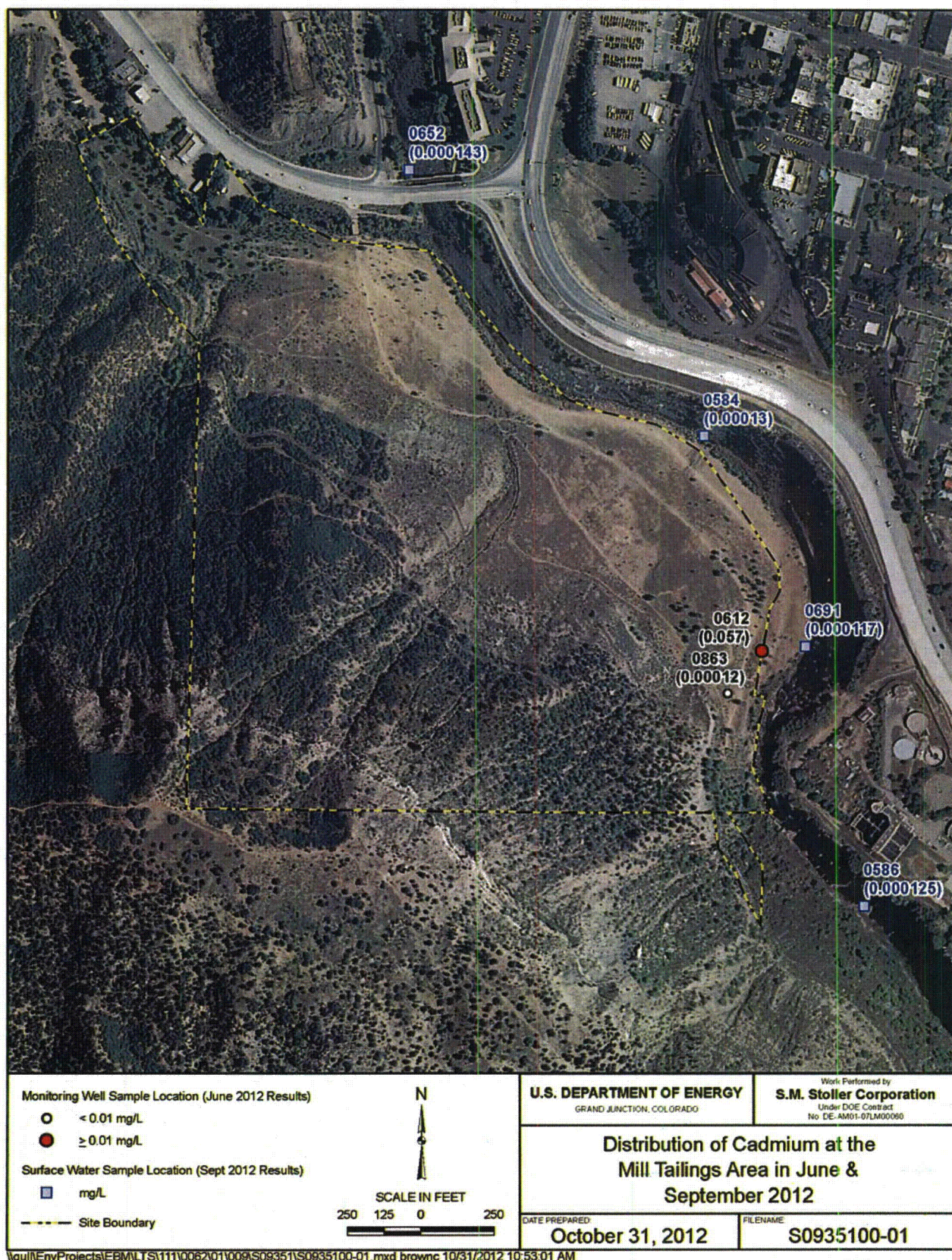
#### **4.1.1.2 Manganese**

Figure 7 illustrates the distribution of manganese concentrations in groundwater in June 2012, and Figure 8 shows the historical variations of manganese concentrations at the compliance wells. The June 2012 results show an increase in concentration at well 0612, the only well in which concentrations exceed the compliance goal (Figure 8). With this increase, projecting the linear trend of the observed concentration at well 0612 implies that natural flushing will not meet the compliance goal at that location within the 100-year time allotment (Figure 9). Well 0612 is close to the downgradient boundary where groundwater leaves the site; therefore, contaminant migration from that area will not affect other regions of the aquifer. The flushing period for well 0612 is assumed to represent a sitewide maximum for manganese because the compliance goal is not exceeded at any other location.

#### **4.1.1.3 Molybdenum**

Molybdenum concentrations in June 2012 remained below the compliance goal of 0.1 mg/L at all locations (Figure 10). The concentration at well 0612, which increased slightly in 2011, remained in compliance (Figure 10 and Figure 11). Concentrations in all wells have remained below the standard for at least three sampling rounds, and monitoring for molybdenum could be discontinued. The linear trend of observed concentrations at well 0612 forecast molybdenum flushing to be complete in 2010 (Figure 12); and the continued decreasing trend supports the interpretation that molybdenum flushing is complete.







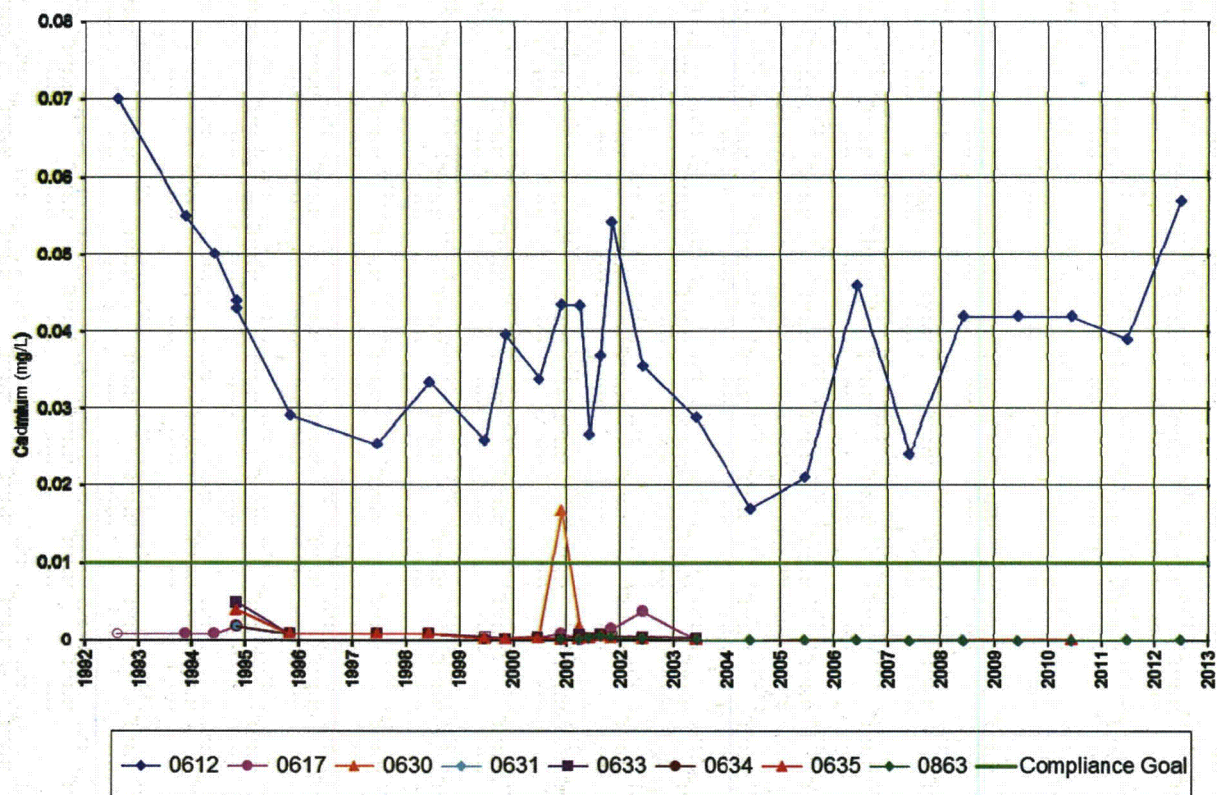


Figure 5. Historical Cadmium Concentrations in Groundwater at the Mill Tailings Area

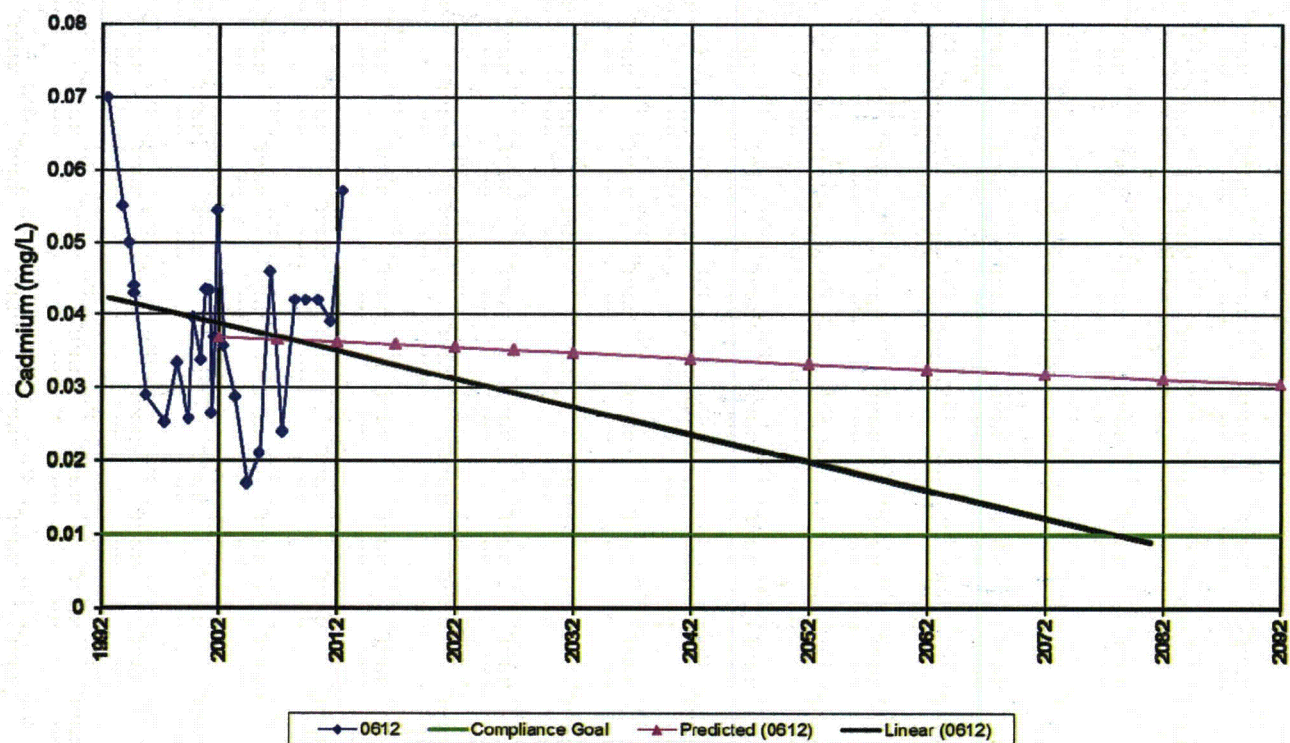


Figure 6. Predicted and Measured Cadmium Concentrations at the Mill Tailings Area





Figure 7. Distribution of Manganese at the Mill Tailings Area in June 2012



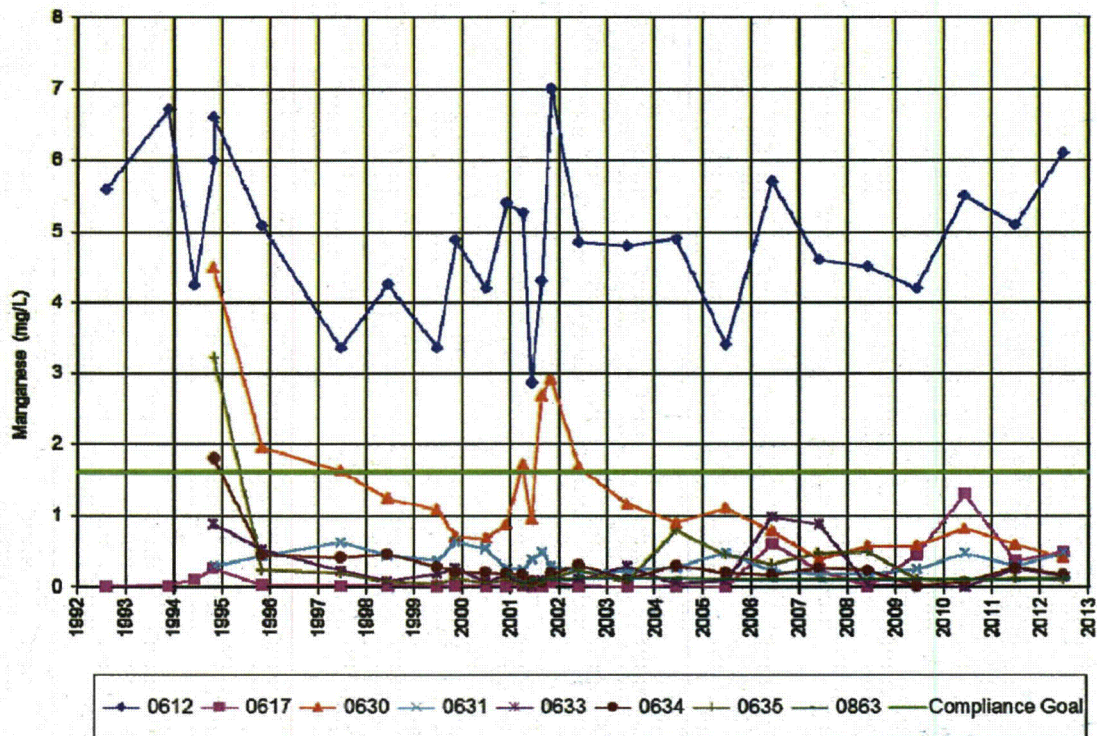


Figure 8. Historical Concentrations of Manganese at the Mill Tailings Area

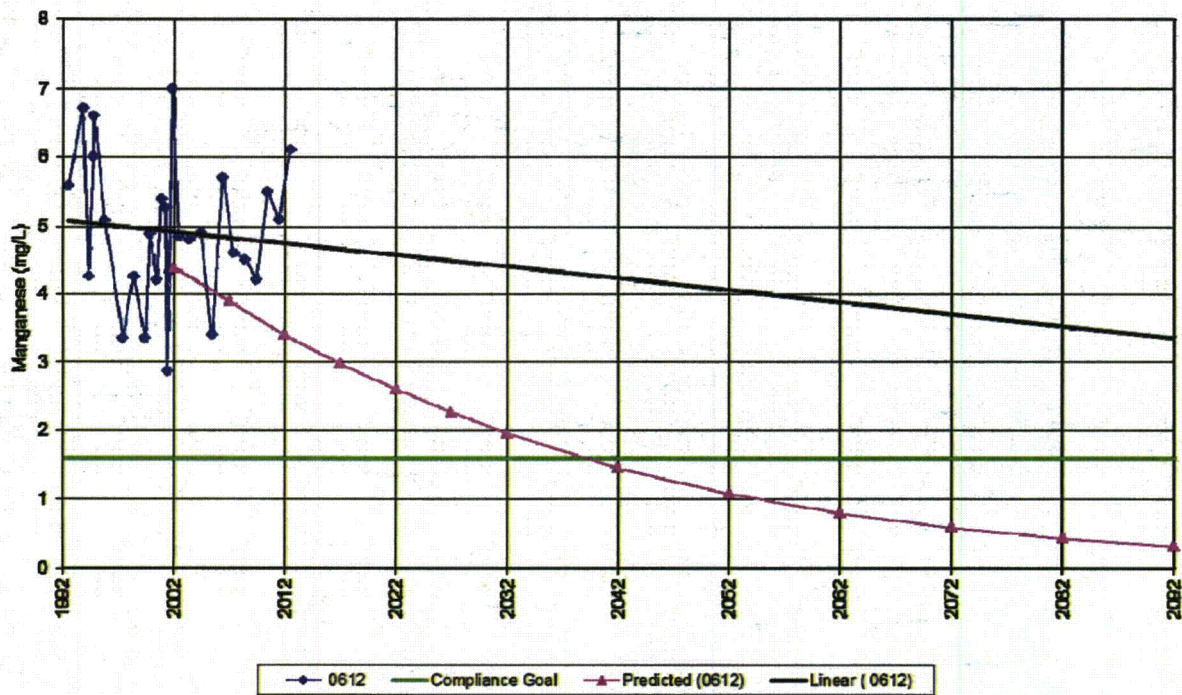


Figure 9. Predicted and Measured Manganese Concentrations at the Mill Tailings Area



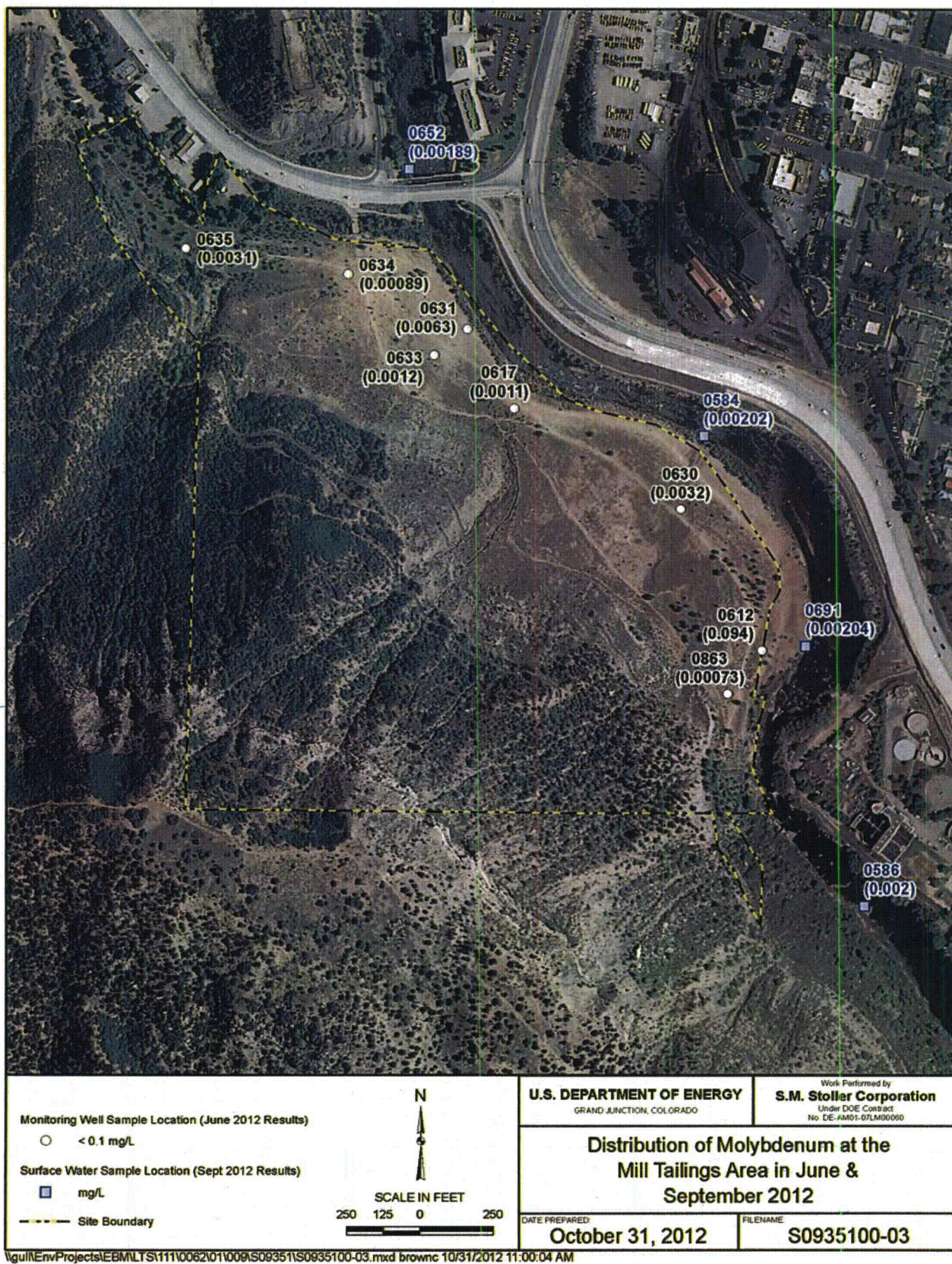


Figure 10. Distribution of Molybdenum at the Mill Tailings Area in June and September 2012



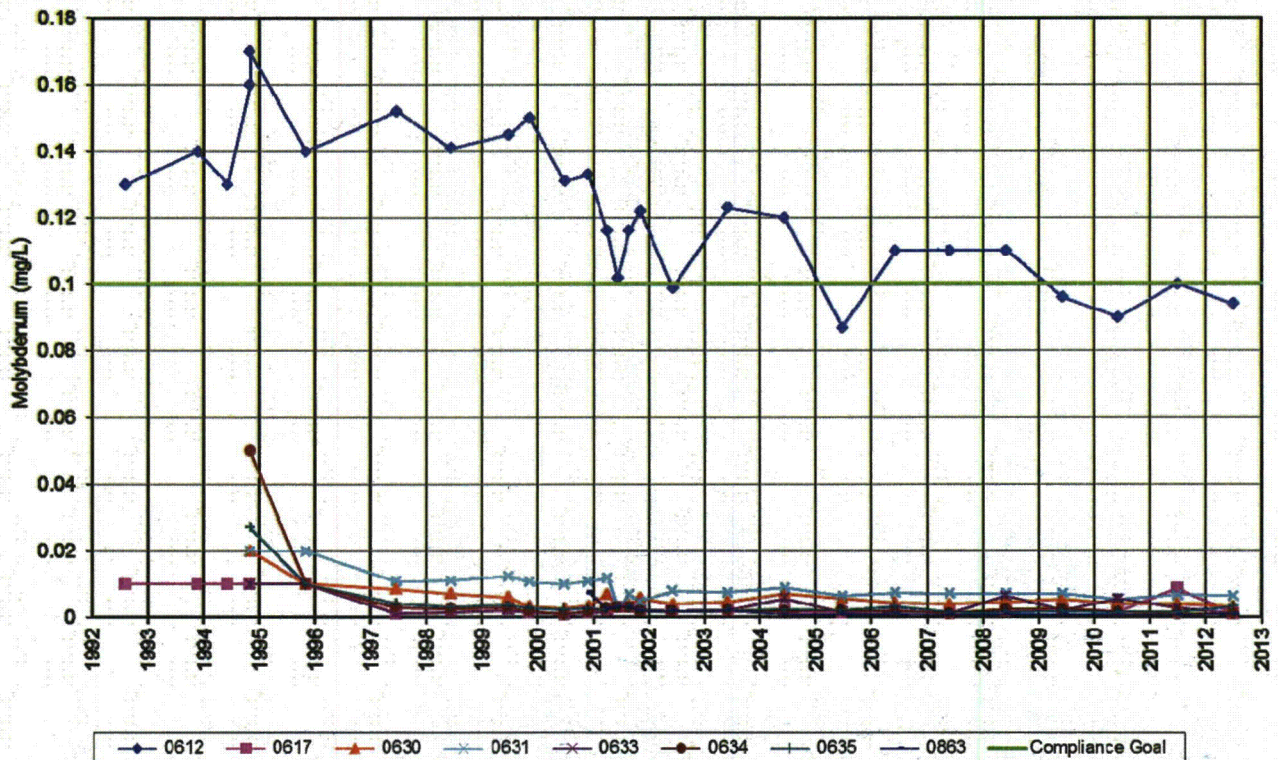


Figure 11. Historical Concentrations of Molybdenum at the Mill Tailings Area

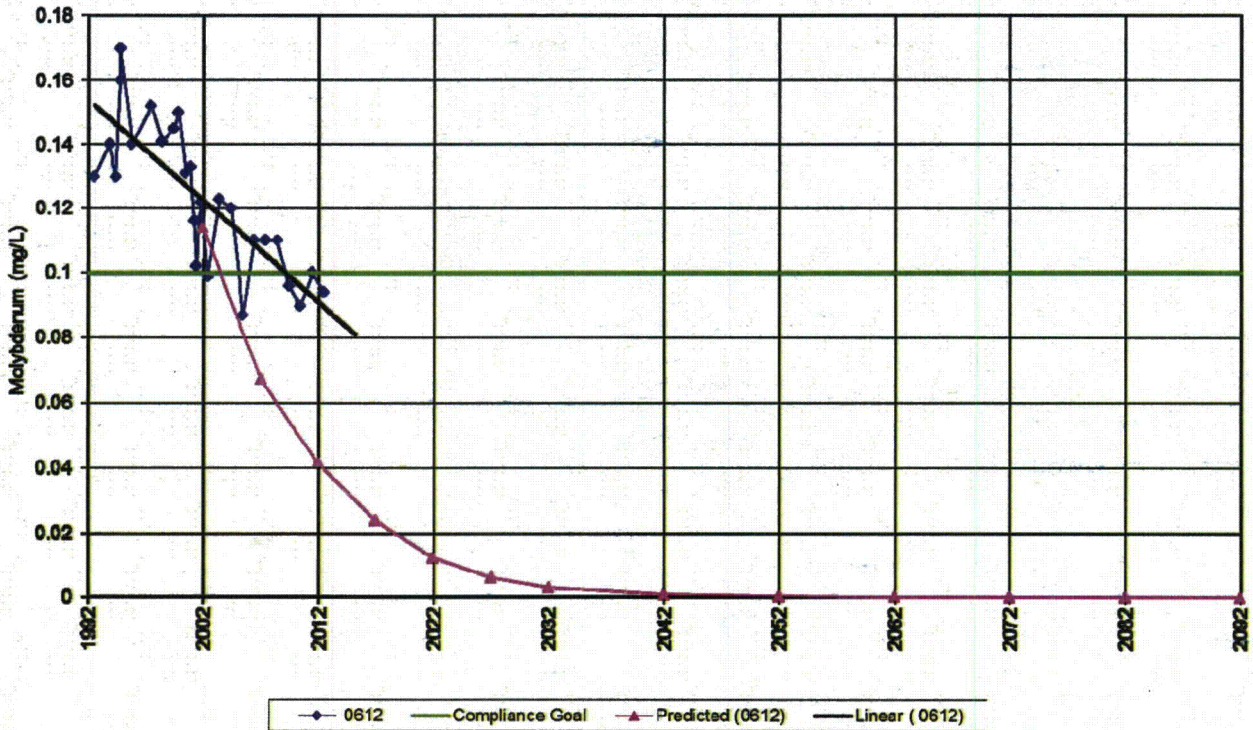


Figure 12. Predicted and Measured Molybdenum Concentrations at the Mill Tailings Area

#### **4.1.1.4 Selenium**

Figure 13 shows, in map view, that the compliance goal for selenium (0.05 mg/L) was met at all wells. Selenium levels in well 0633, which had rebounded above the standard in 2010 decreased below the standard in 2011 and remained below it in 2012 (Figure 14). The model predicted that selenium concentrations would drop below the ACL by 2024 (Figure 15).

Concentrations in well 0633 increased from 0.048 mg/L in 2009 to 0.13 mg/L in 2010, decreased to 0.015 mg/L in 2011, and decreased further to 0.009 mg/L in 2012 (Figure 14). The majority of the screened portion of well 0633 is in Mancos Shale, a recognized source of readily mobilized selenium (DOE 2002). The low-level selenium contamination at the site may in part be site-related; however, some contribution from natural sources is likely, as evidenced by concentrations greater than 0.01 mg/L at background well 0622 (Figure 14).

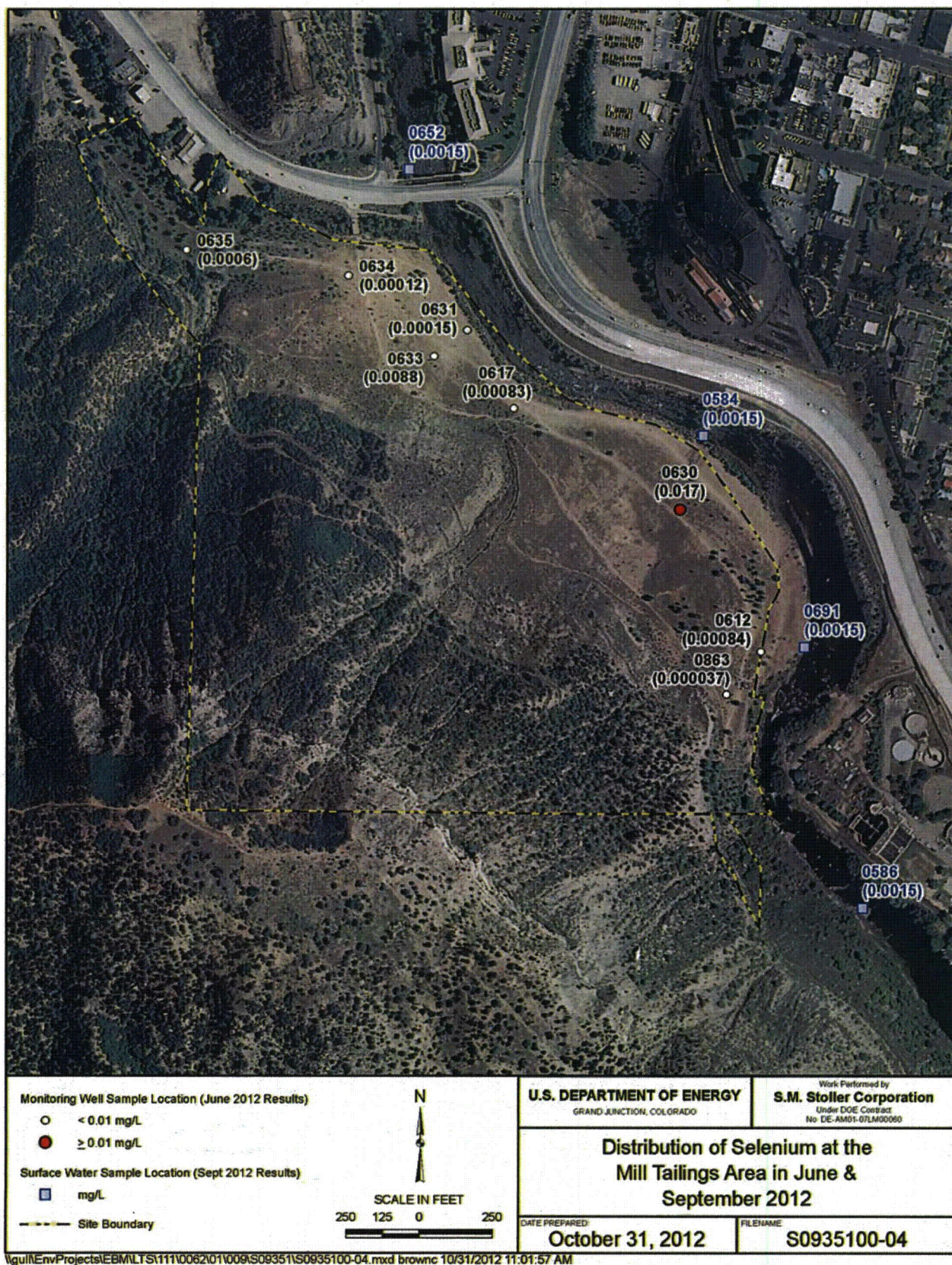
#### **4.1.1.5 Sulfate**

Sulfate concentrations that exceed background levels are related to the former use of sulfuric acid in the milling process. In June 2012, sulfate exceeded the average background concentration at all POC wells except wells 0631, 0635, and 0863 (Figure 16 and Figure 17). Observed concentrations since 1992 have fluctuated considerably at most of the POC wells and have generally not shown trending (Figure 18). Linear trend projections of data from well 0612 and well 0617 indicate that concentrations at these locations will meet the compliance goal (Figure 18). Linear trends at wells 0633 and 0634 are relatively flat or increasing, but the model predictions indicate compliance by 2067 and 2032, respectively (Figure 18).

#### **4.1.1.6 Uranium**

The uranium compliance goal was exceeded at all locations except wells 0634, 0635 and 0863 in June 2012 (Figure 19 and Figure 20). The two wells where uranium concentrations have been the greatest (0612 and 0633) have shown a generally decreasing concentration trend since source removal. Groundwater model predictions indicate that sitewide uranium flushing will be complete by about 90 years after June 2002 (Table 5). To date, observed concentrations at the two wells that have the highest uranium concentrations (wells 0612 and 0633) are in general agreement with the model results (Figure 21). These wells are widely separated in the aquifer. The predicted flushing periods for these two wells are less than the predicted sitewide flushing time because the last area to flush, according to the site model, is south of the downgradient-most monitoring well (well 0612). Linear projection of the observed concentration at well 0633 implies uranium flushing by about 2030 (Figure 21). The model-predicted initial rates of uranium flushing at this well are in agreement with the observed concentrations. The model predicts that the initial rates will be rapid followed by a period of less-rapid flushing and marginal levels of contamination (concentration tailing) until the goal is attained. Similar tailing of concentrations is predicted by the model at well 0612. Uranium concentrations may remain slightly above the compliance goal during the period of reduced flushing at these two wells.







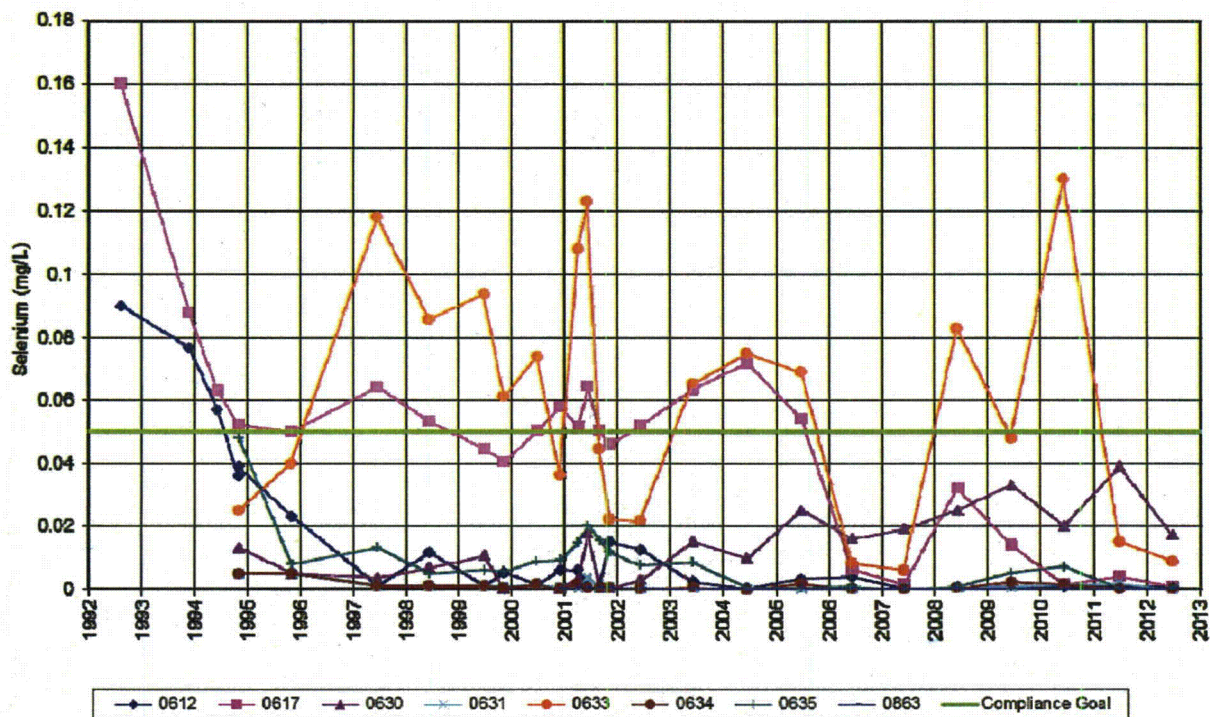


Figure 14. Historical Selenium Concentrations in Groundwater at the Mill Tailings Area

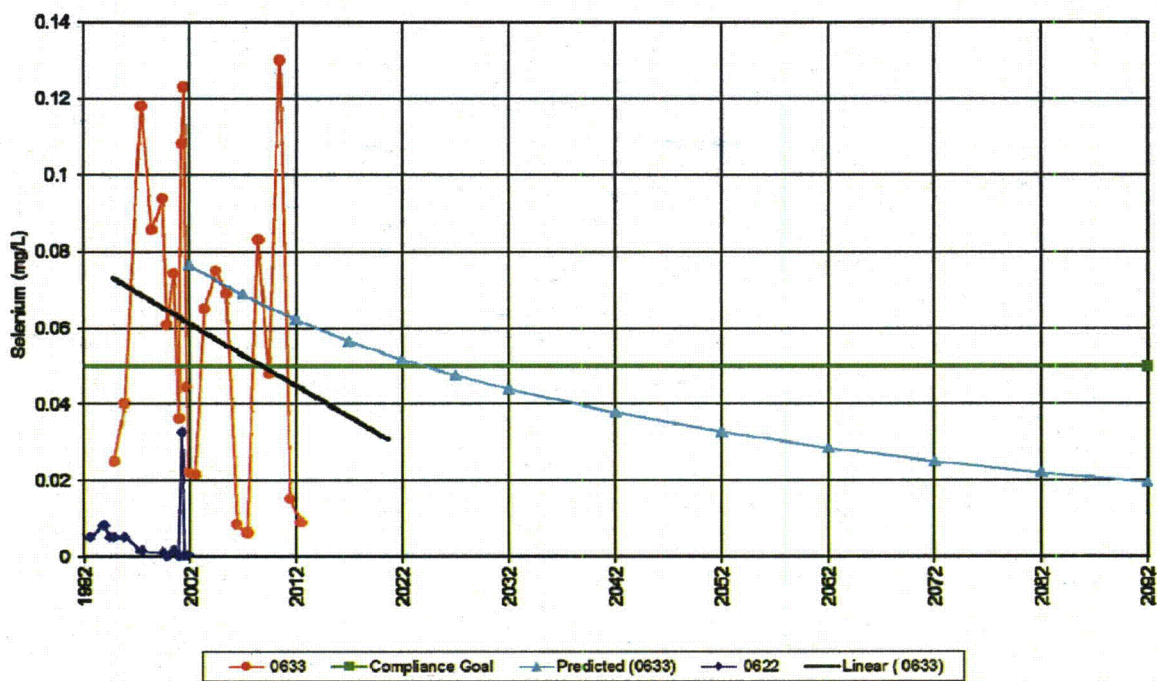
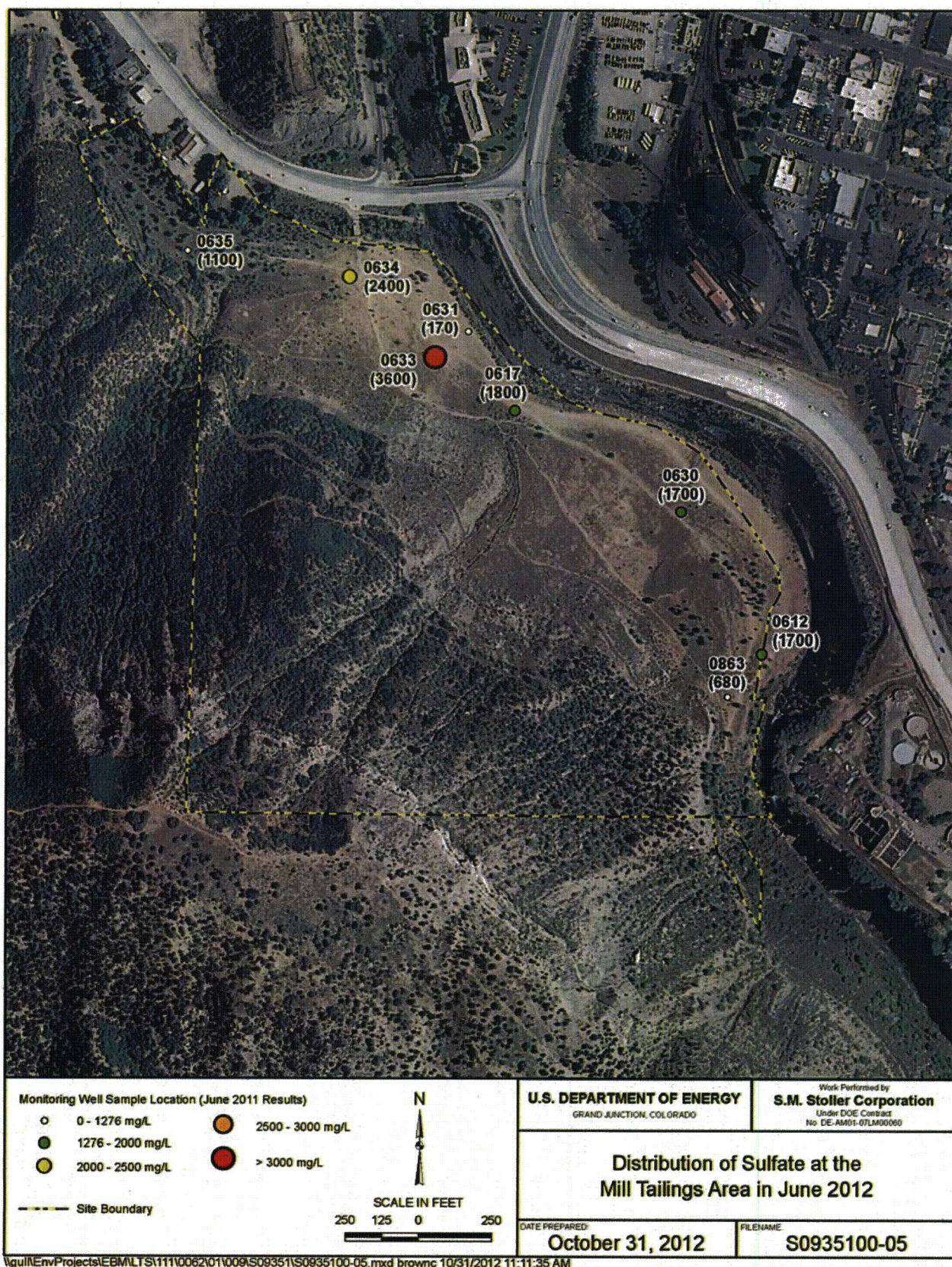


Figure 15. Predicted and Measured Selenium Concentrations at the Mill Tailings Area







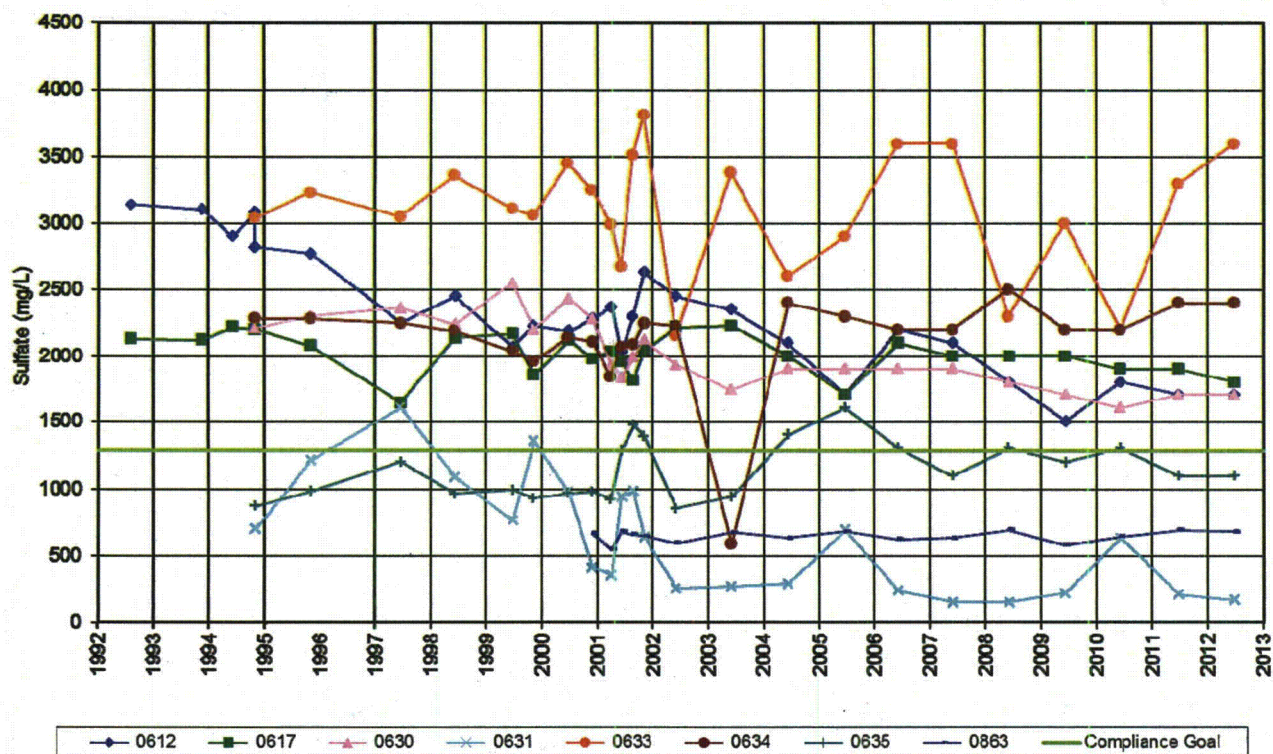


Figure 17. Historical Concentrations of Sulfate at the Mill Tailings Area

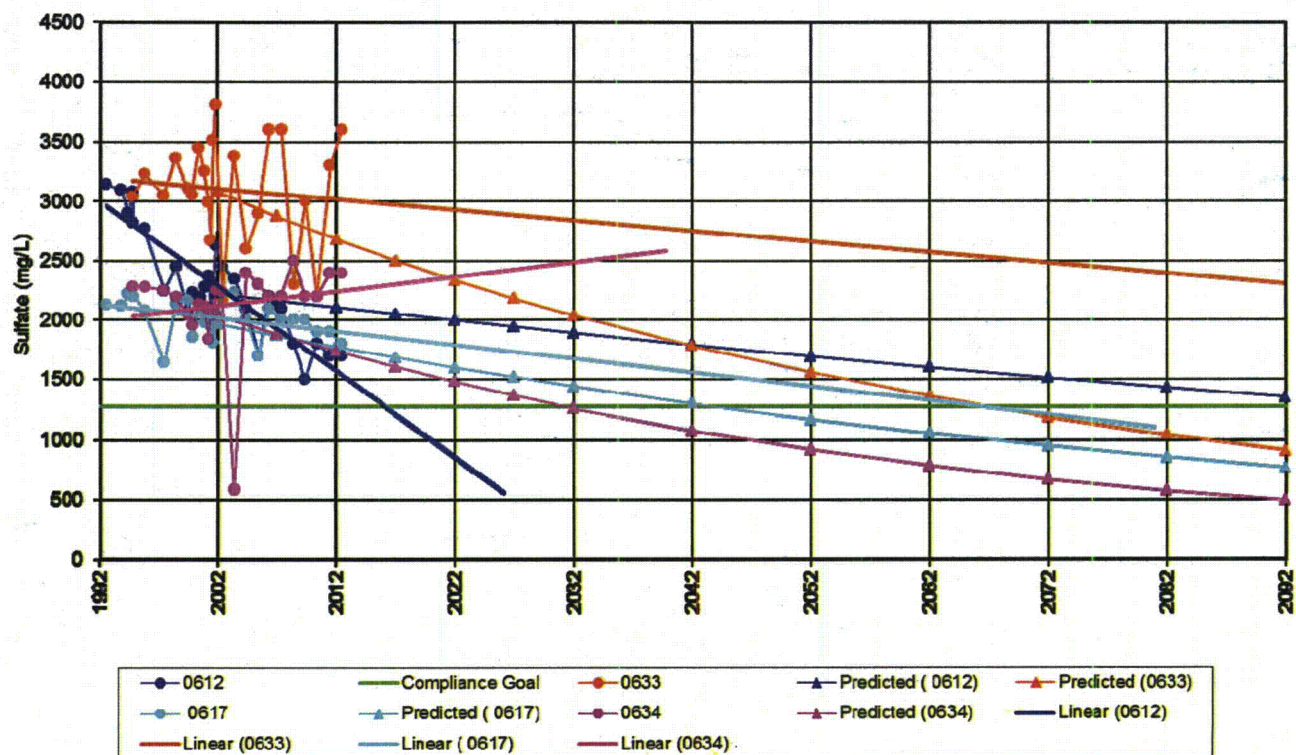


Figure 18. Predicted and Measured Sulfate Concentrations at the Mill Tailings Area



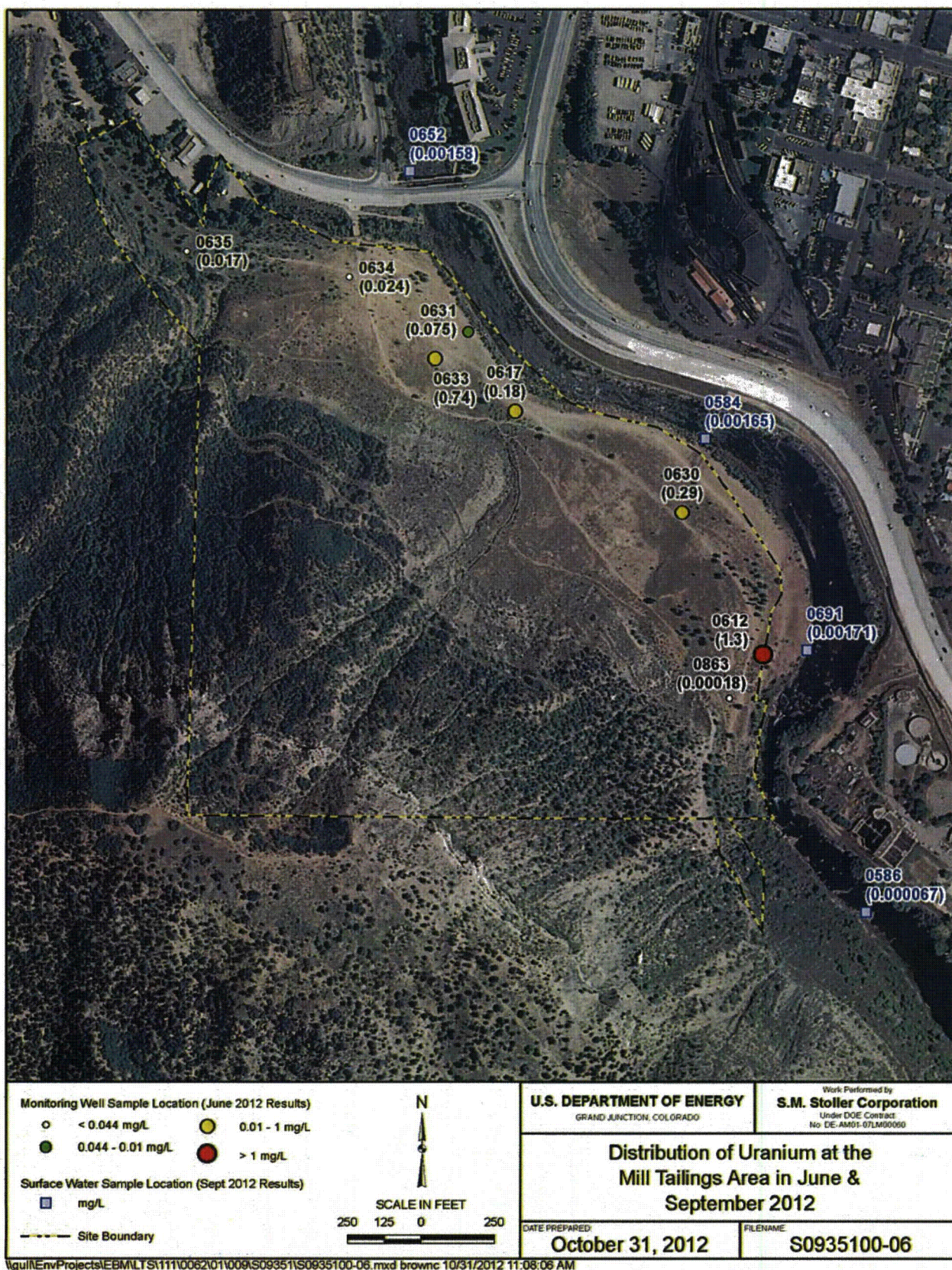


Figure 19. Distribution of Uranium at the Mill Tailings Area in June and September 2012



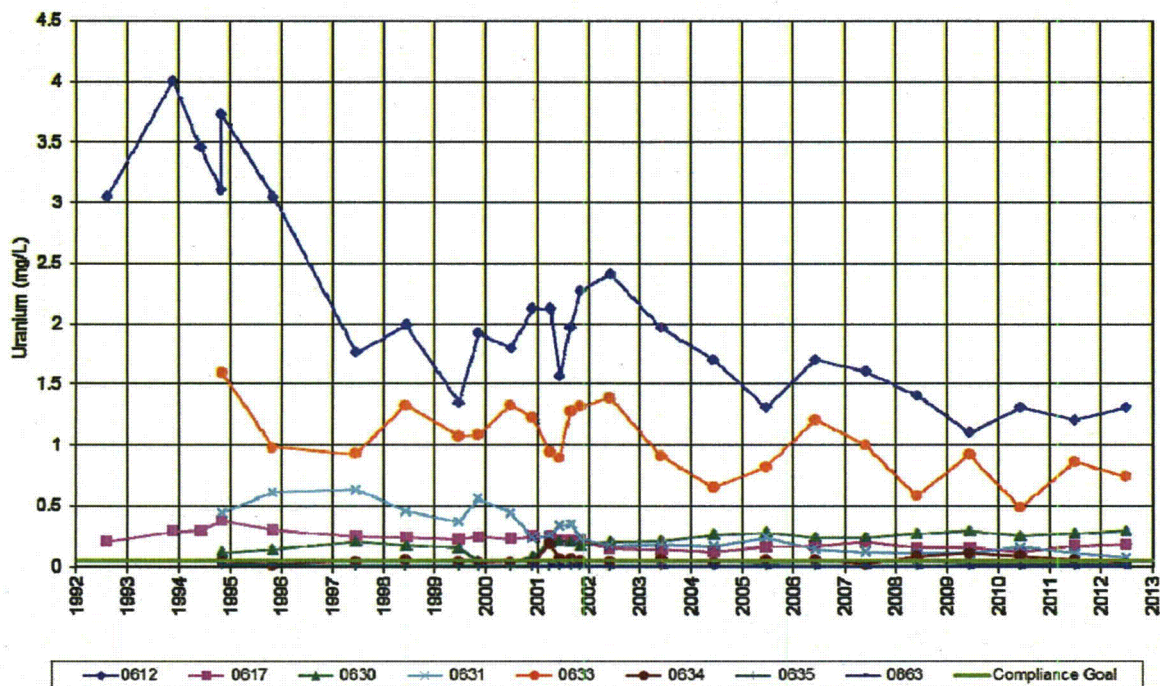


Figure 20. Historical Concentrations of Uranium at the Mill Tailings Area

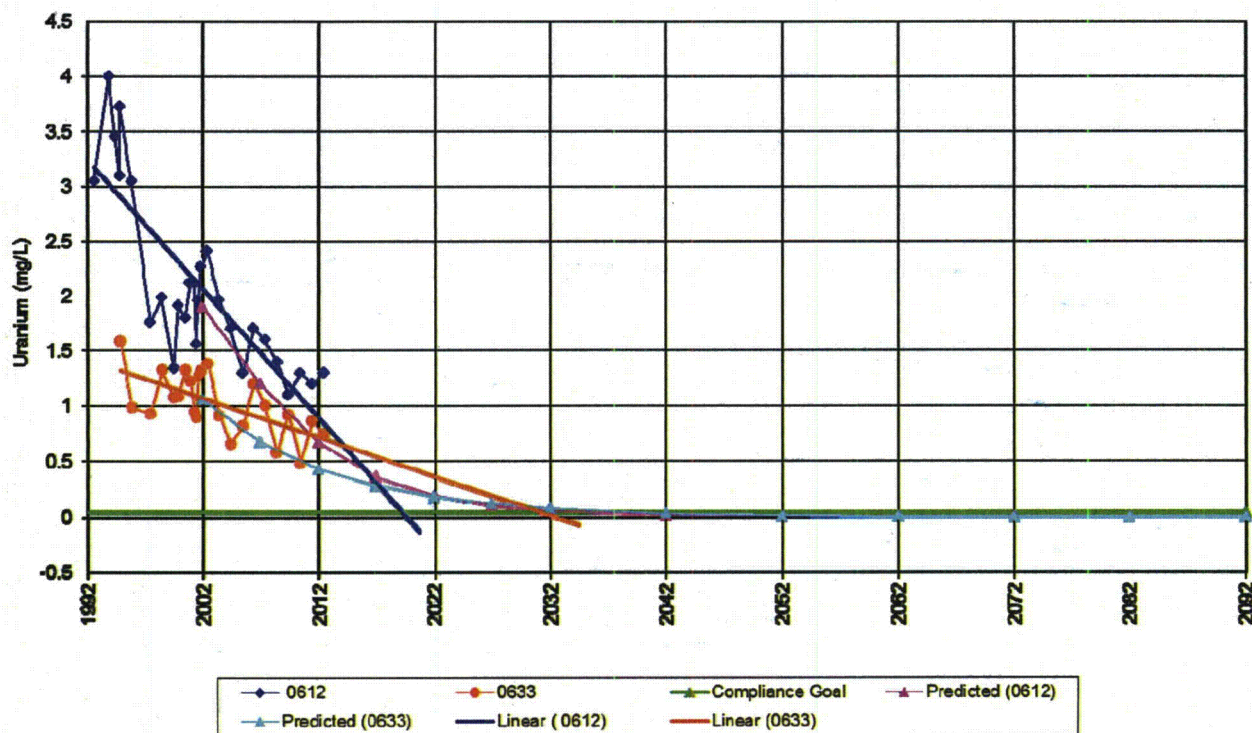


Figure 21. Predicted and Measured Uranium Concentrations at the Mill Tailings Area



#### **4.1.2 Raffinate Ponds Area**

Groundwater in the raffinate ponds area is being monitored as a best management practice. Bedrock groundwater at the raffinate ponds area qualifies for supplemental standards on the basis of limited use groundwater due to widespread elevated concentrations of naturally occurring selenium. Because naturally occurring sources of both selenium and uranium are present in the area, groundwater concentrations of these constituents are not expected to flush to compliance goals. Therefore, no modeling was done for the raffinate ponds area.

Groundwater was sampled from five wells in the monitoring network (Figure 3) in 2012 and analyzed for uranium and selenium. Sampling results for 2012 are provided in Appendix A and are discussed below by constituent.

##### **4.1.2.1 Selenium**

Figure 22 shows historical concentrations of selenium since completion of remedial action in 1992. Significant increases and decreases in selenium distribution in groundwater occurred at several wells from 2001 to 2004, and concentrations have since leveled off. It is not clear what caused the past variations in selenium concentrations; accordingly, future levels of selenium in the area's groundwater cannot be reliably predicted.

##### **4.1.2.2 Uranium**

Historical concentrations of uranium in the raffinate ponds area are shown in Figure 23. Concentrations of uranium in most wells have fluctuated over the last several years, showing neither increasing nor decreasing trends. Supplemental standards were applied to soils in the raffinate ponds area (DOE 2002), and those soils may contain residual uranium contamination that influences groundwater quality. Subpile soil analyses indicate the presence of uranium in soils remaining at the site (DOE 2002).

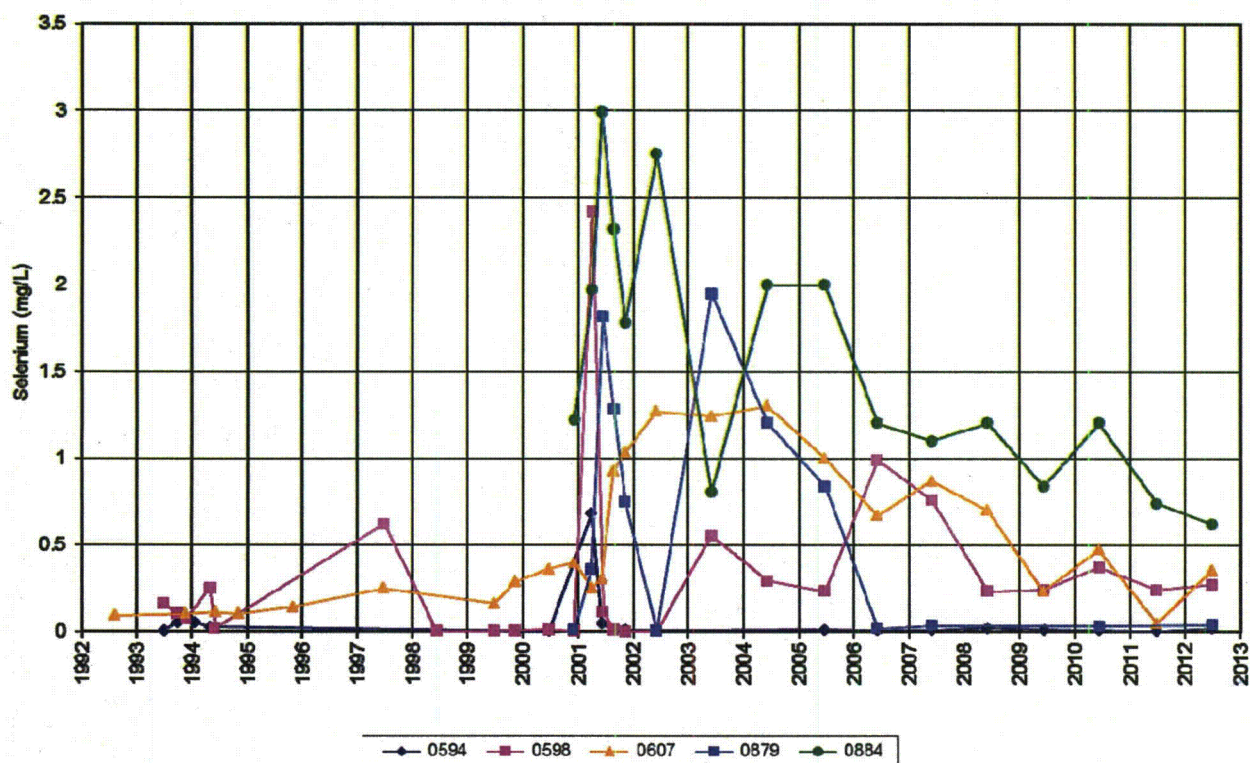


Figure 22. Historical Selenium Concentrations in Groundwater at the Raffinate Ponds Area

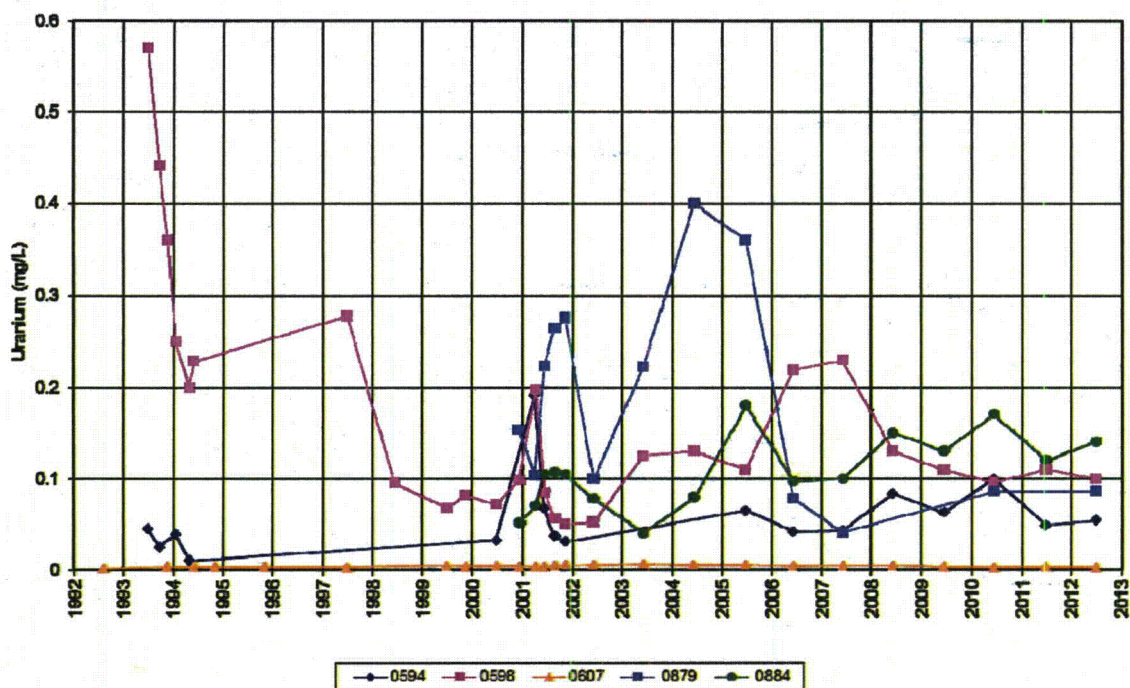


Figure 23. Historical Uranium Concentrations in Groundwater at the Raffinate Ponds Area

## 4.2 Surface Water

Surface water was sampled from six locations in the Animas River adjacent to both the mill tailings and raffinate ponds areas during September 2012 and analyzed for cadmium, molybdenum, selenium, and uranium (Figure 2 and Figure 3, Table 3 and Table 4). In 2011, a sample was collected from South Creek (location 0588), upgradient from the raffinate ponds area, to assess the quality of water entering the raffinate ponds area from the west. The sample from South Creek had levels of selenium (0.00091 mg/L) and uranium (0.022 mg/L) that were higher than those from any other surface water location. However, discharge of the creek to the Animas River had no discernible impact on concentrations of selenium and uranium at the river sampling location (0654). South Creek location 0588 was not sampled in 2012 because the creek was dry during the September sampling event. Concentrations of constituents at all locations along the river were well below the respective compliance goals and remain indistinguishable from background levels (Table 2 and Appendixes A and B).

## 5.0 Natural Flushing Assessment

As of June 2012, the observed rate of contaminant flushing is generally consistent with groundwater model predictions, given that the validation period to date (June 2002 to June 2012) is short compared to predicted flushing periods (60 to 100 years) for the various contaminants. Only cadmium was identified in the modeling as potentially unlikely to flush to acceptable levels within 100 years. However, at the single location (well 0612) where cadmium is present above the compliance goal of 0.01 mg/L, concentrations have decreased more rapidly than predicted by the model. The linear trend suggests the compliance goal for cadmium will be reached by about 2078. With the possible exception of sulfate and selenium, modeling predictions and concentration trends imply that the compliance goals for remaining constituents will likely be attained within 100 years, suggesting that natural flushing remains a valid compliance strategy for these constituents as well. The impact on surface water quality from site-related contamination remains negligible.

## 6.0 References

DOE (U.S. Department of Energy), 1995. *Baseline Risk Assessment of Ground Water Contamination at the Uranium Mill Tailings Site Near Durango, Colorado*, Rev. 1, DOE/AL/62350-175, UMTRA Project Office, Albuquerque, New Mexico, September.

DOE (U.S. Department of Energy), 2002. *Site Observational Work Plan for the Durango, Colorado, UMTRA Project Site*, GJO-2001-272-TAR/MAC-GW DUR 1.1, Grand Junction Office, Grand Junction, Colorado, January.

DOE (U.S. Department of Energy), 2003. *Preliminary Final Ground Water Compliance Action Plan for the Durango, Colorado, UMTRA Project Site*, GJO-2003-463-TAC/GWDUR 1.9, Grand Junction Office, Grand Junction, Colorado, July.

EPA (U.S. Environmental Protection Agency), 2004. *2004 Edition of the Drinking Water Standards and Health Advisories*, EPA822-R-04-005, Office of Water, Washington, DC.



## **Appendix A**

### **Durango Mill Tailings Processing Site (DUR01) Groundwater and Surface Water Quality Data**

This page intentionally left blank

GENERAL WATER QUALITY DATA BY LOCATION (USEE105) FOR SITE DUR01, Durango Mill Tailings Process Site

LOCATION: 0584 <surface location>

REPORT DATE: 12/4/2012 12:10 pm

| PARAMETER                     | UNITS   | SAMPLE:<br>DATE | ID   | DEPTH.<br>RANGE | RESULT  | QUALIFIERS:<br>LAB DATA QA | DETECTION<br>LIMIT | UN-<br>CERTAINTY |
|-------------------------------|---------|-----------------|------|-----------------|---------|----------------------------|--------------------|------------------|
| Alkalinity, Total (As CaCO3)  | mg/L    | 09/18/2012      | N001 | 0.00 - 0.00     | 95      | #                          | -                  | -                |
| Cadmium                       | mg/L    | 09/18/2012      | N001 | 0.00 - 0.00     | 0.00013 | B #                        | 0.00011            | -                |
| Molybdenum                    | mg/L    | 09/18/2012      | N001 | 0.00 - 0.00     | 0.00202 | B #                        | 0.00017            | -                |
| Oxidation Reduction Potential | mV      | 09/18/2012      | N001 | 0.00 - 0.00     | 230     | #                          | -                  | -                |
| pH                            | s.u.    | 09/18/2012      | N001 | 0.00 - 0.00     | 8.04    | #                          | -                  | -                |
| Selenium                      | mg/L    | 09/18/2012      | N001 | 0.00 - 0.00     | 0.00150 | U #                        | 0.0015             | -                |
| Specific Conductance          | umhos/c | 09/18/2012      | N001 | 0.00 - 0.00     | 760     | #                          | -                  | -                |
| Temperature                   | C       | 09/18/2012      | N001 | 0.00 - 0.00     | 10.7    | #                          | -                  | -                |
| Turbidity                     | NTU     | 09/18/2012      | N001 | 0.00 - 0.00     | 7.38    | #                          | -                  | -                |
| Uranium                       | mg/L    | 09/18/2012      | N001 | 0.00 - 0.00     | 0.00165 | #                          | 6.7E-05            | -                |



GENERAL WATER QUALITY DATA BY LOCATION (USEE105) FOR SITE DUR01, Durango Mill Tailings Process Site

LOCATION: 0586 <surface location>

REPORT DATE: 12/4/2012 12:10 pm

| PARAMETER                     | UNITS   | SAMPLE:<br>DATE | ID   | DEPTH.<br>RANGE | RESULT  | QUALIFIERS:<br>LAB DATA QA | DETECTION<br>LIMIT | UN-<br>CERTAINTY |
|-------------------------------|---------|-----------------|------|-----------------|---------|----------------------------|--------------------|------------------|
| Alkalinity, Total (As CaCO3)  | mg/L    | 09/18/2012      | N001 | 0.00 - 0.00     | 250     | #                          | -                  | -                |
| Cadmium                       | mg/L    | 09/18/2012      | N001 | 0.00 - 0.00     | 0.00012 | B #                        | 0.00011            | -                |
| Molybdenum                    | mg/L    | 09/18/2012      | N001 | 0.00 - 0.00     | 0.002   | B #                        | 0.00017            | -                |
| Oxidation Reduction Potential | mV      | 09/18/2012      | N001 | 0.00 - 0.00     | 200     | #                          | -                  | -                |
| pH                            | s.u.    | 09/18/2012      | N001 | 0.00 - 0.00     | 8.16    | #                          | -                  | -                |
| Selenium                      | mg/L    | 09/18/2012      | N001 | 0.00 - 0.00     | 0.00150 | U #                        | 0.0015             | -                |
| Specific Conductance          | umhos/c | 09/18/2012      | N001 | 0.00 - 0.00     | 760     | #                          | -                  | -                |
| Temperature                   | C       | 09/18/2012      | N001 | 0.00 - 0.00     | 11.0    | #                          | -                  | -                |
| Turbidity                     | NTU     | 09/18/2012      | N001 | 0.00 - 0.00     | 7.12    | #                          | -                  | -                |
| Uranium                       | mg/L    | 09/18/2012      | N001 | 0.00 - 0.00     | 0.00167 | #                          | 6.7E-05            | -                |

GENERAL WATER QUALITY DATA BY LOCATION (USEE105) FOR SITE DUR01, Durango Mill Tailings Process Site

LOCATION: 0612 <well>

REPORT DATE: 12/4/2012 12:10 pm

| PARAMETER                     | UNITS   | SAMPLE:<br>DATE | ID   | DEPTH.<br>RANGE | RESULT  | QUALIFIERS:<br>LAB DATA QA | DETECTION<br>LIMIT | UN-<br>CERTAINTY |
|-------------------------------|---------|-----------------|------|-----------------|---------|----------------------------|--------------------|------------------|
| Alkalinity, Total (As CaCO3)  | mg/L    | 06/26/2012      | N001 | 37.41 - 57.41   | 479     | F #                        | -                  | -                |
| Cadmium                       | mg/L    | 06/26/2012      | N001 | 37.41 - 57.41   | 0.057   | F #                        | 0.00012            | -                |
| Manganese                     | mg/L    | 06/26/2012      | N001 | 37.41 - 57.41   | 6.100   | F #                        | 0.00011            | -                |
| Molybdenum                    | mg/L    | 06/26/2012      | N001 | 37.41 - 57.41   | 0.094   | F #                        | 0.00032            | -                |
| Oxidation Reduction Potential | mV      | 06/26/2012      | N001 | 37.41 - 57.41   | 41.9    | F #                        | -                  | -                |
| pH                            | s.u.    | 06/26/2012      | N001 | 37.41 - 57.41   | 6.58    | F #                        | -                  | -                |
| Selenium                      | mg/L    | 06/26/2012      | N001 | 37.41 - 57.41   | 0.00084 | F #                        | 3.2E-05            | -                |
| Specific Conductance          | umhos/c | 06/26/2012      | N001 | 37.41 - 57.41   | 4091    | F #                        | -                  | -                |
| Sulfate                       | mg/L    | 06/26/2012      | N001 | 37.41 - 57.41   | 1700    | F #                        | 50                 | -                |
| Temperature                   | C       | 06/26/2012      | N001 | 37.41 - 57.41   | 13.42   | F #                        | -                  | -                |
| Turbidity                     | NTU     | 06/26/2012      | N001 | 37.41 - 57.41   | 5.60    | F #                        | -                  | -                |
| Uranium                       | mg/L    | 06/26/2012      | N001 | 37.41 - 57.41   | 1.300   | F #                        | 0.00015            | -                |

GENERAL WATER QUALITY DATA BY LOCATION (USEE105) FOR SITE DUR01, Durango Mill Tailings Process Site

LOCATION: 0617 <well>

REPORT DATE: 12/4/2012 12:10 pm

| PARAMETER                                 | UNITS   | SAMPLE:<br>DATE | ID   | DEPTH.<br>RANGE | RESULT  | QUALIFIERS:<br>LAB DATA QA | DETECTION<br>LIMIT | UN-<br>CERTAINTY |
|---|---------|-----------------|------|-----------------|---------|----------------------------|--------------------|------------------|
| Alkalinity, Total (As CaCO <sub>3</sub> ) | mg/L    | 06/26/2012      | N001 | 14.00 - 29.00   | 410     | F #                        | -                  | -                |
| Manganese                                 | mg/L    | 06/26/2012      | N001 | 14.00 - 29.00   | 0.490   | F #                        | 0.00011            | -                |
| Molybdenum                                | mg/L    | 06/26/2012      | N001 | 14.00 - 29.00   | 0.0011  | F #                        | 0.00032            | -                |
| Oxidation Reduction Potential             | mV      | 06/26/2012      | N001 | 14.00 - 29.00   | -106.9  | F #                        | -                  | -                |
| pH  | s.u.    | 06/26/2012      | N001 | 14.00 - 29.00   | 6.91    | F #                        | -                  | -                |
| Selenium                                  | mg/L    | 06/26/2012      | N001 | 14.00 - 29.00   | 0.00083 | F #                        | 3.2E-05            | -                |
| Specific Conductance                      | umhos/c | 06/26/2012      | N001 | 14.00 - 29.00   | 3367    | F #                        | -                  | -                |
| Sulfate                                   | mg/L    | 06/26/2012      | N001 | 14.00 - 29.00   | 1800    | F #                        | 25                 | -                |
| Temperature                               | C       | 06/26/2012      | N001 | 14.00 - 29.00   | 13.82   | F #                        | -                  | -                |
| Turbidity                                 | NTU     | 06/26/2012      | N001 | 14.00 - 29.00   | 7.16    | F #                        | -                  | -                |
| Uranium                                   | mg/L    | 06/26/2012      | N001 | 14.00 - 29.00   | 0.180   | F #                        | 2.9E-05            | -                |



GENERAL WATER QUALITY DATA BY LOCATION (USEE105) FOR SITE DUR01, Durango Mill Tailings Process Site

LOCATION: 0630 <well>

REPORT DATE: 12/4/2012 12:10 pm

| PARAMETER                     | UNITS   | SAMPLE:<br>DATE | ID   | DEPTH.<br>RANGE | RESULT | QUALIFIERS:<br>LAB DATA QA | DETECTION<br>LIMIT | UN-<br>CERTAINTY |
|-------------------------------|---------|-----------------|------|-----------------|--------|----------------------------|--------------------|------------------|
| Alkalinity, Total (As CaCO3)  | mg/L    | 06/26/2012      | N001 | 28.30 - 38.30   | 325    | F #                        | -                  | -                |
| Manganese                     | mg/L    | 06/26/2012      | N001 | 28.30 - 38.30   | 0.410  | F #                        | 0.00011            | -                |
| Molybdenum                    | mg/L    | 06/26/2012      | N001 | 28.30 - 38.30   | 0.0032 | F #                        | 0.00032            | -                |
| Oxidation Reduction Potential | mV      | 06/26/2012      | N001 | 28.30 - 38.30   | -4.3   | F #                        | -                  | -                |
| pH                            | s.u.    | 06/26/2012      | N001 | 28.30 - 38.30   | 6.80   | F #                        | -                  | -                |
| Selenium                      | mg/L    | 06/26/2012      | N001 | 28.30 - 38.30   | 0.017  | F #                        | 0.00032            | -                |
| Specific Conductance          | umhos/c | 06/26/2012      | N001 | 28.30 - 38.30   | 3343   | F #                        | -                  | -                |
| Sulfate                       | mg/L    | 06/26/2012      | N001 | 28.30 - 38.30   | 1700   | F #                        | 25                 | -                |
| Temperature                   | C       | 06/26/2012      | N001 | 28.30 - 38.30   | 14.95  | F #                        | -                  | -                |
| Turbidity                     | NTU     | 06/26/2012      | N001 | 28.30 - 38.30   | 6.14   | F #                        | -                  | -                |
| Uranium                       | mg/L    | 06/26/2012      | N001 | 28.30 - 38.30   | 0.290  | F #                        | 2.9E-05            | -                |

GENERAL WATER QUALITY DATA BY LOCATION (USEE105) FOR SITE DUR01, Durango Mill Tailings Process Site

LOCATION: 0631 <well>

REPORT DATE: 12/4/2012 12:10 pm

| PARAMETER                                 | UNITS   | SAMPLE:<br>DATE | ID   | DEPTH.<br>RANGE | RESULT  | QUALIFIERS:<br>LAB DATA QA | DETECTION<br>LIMIT | UN-<br>CERTAINTY |
|---|---------|-----------------|------|-----------------|---------|----------------------------|--------------------|------------------|
| Alkalinity, Total (As CaCO <sub>3</sub> ) | mg/L    | 06/26/2012      | N001 | 6.00 - 16.00    | 404     | F #                        | -                  | -                |
| Manganese                                 | mg/L    | 06/26/2012      | N001 | 6.00 - 16.00    | 0.470   | F #                        | 0.00011            | -                |
| Molybdenum                                | mg/L    | 06/26/2012      | N001 | 6.00 - 16.00    | 0.0063  | F #                        | 0.00032            | -                |
| Oxidation Reduction Potential             | mV      | 06/26/2012      | N001 | 6.00 - 16.00    | -73.8   | F #                        | -                  | -                |
| pH  | s.u.    | 06/26/2012      | N001 | 6.00 - 16.00    | 7.15    | F #                        | -                  | -                |
| Selenium                                  | mg/L    | 06/26/2012      | N001 | 6.00 - 16.00    | 0.00015 | F #                        | 3.2E-05            | -                |
| Specific Conductance                      | umhos/c | 06/26/2012      | N001 | 6.00 - 16.00    | 1263    | F #                        | -                  | -                |
| Sulfate                                   | mg/L    | 06/26/2012      | N001 | 6.00 - 16.00    | 170     | F #                        | 2.5                | -                |
| Temperature                               | C       | 06/26/2012      | N001 | 6.00 - 16.00    | 14.53   | F #                        | -                  | -                |
| Turbidity                                 | NTU     | 06/26/2012      | N001 | 6.00 - 16.00    | 8.30    | F #                        | -                  | -                |
| Uranium                                   | mg/L    | 06/26/2012      | N001 | 6.00 - 16.00    | 0.075   | F #                        | 2.9E-05            | -                |



GENERAL WATER QUALITY DATA BY LOCATION (USEE105) FOR SITE DUR01, Durango Mill Tailings Process Site

LOCATION: 0633 <well>

REPORT DATE: 12/4/2012 12:10 pm

| PARAMETER                     | UNITS   | SAMPLE:<br>DATE | ID   | DEPTH.<br>RANGE | RESULT | QUALIFIERS:<br>LAB DATA QA | DETECTION<br>LIMIT | UN-<br>CERTAINTY |
|-------------------------------|---------|-----------------|------|-----------------|--------|----------------------------|--------------------|------------------|
| Alkalinity, Total (As CaCO3)  | mg/L    | 06/26/2012      | N001 | 4.00 - 14.00    | 808    | F #                        | -                  | -                |
| Manganese                     | mg/L    | 06/26/2012      | N001 | 4.00 - 14.00    | 0.160  | F #                        | 0.00011            | -                |
| Molybdenum                    | mg/L    | 06/26/2012      | N001 | 4.00 - 14.00    | 0.0012 | F #                        | 0.00032            | -                |
| Oxidation Reduction Potential | mV      | 06/26/2012      | N001 | 4.00 - 14.00    | -70.8  | F #                        | -                  | -                |
| pH                            | s.u.    | 06/26/2012      | N001 | 4.00 - 14.00    | 6.64   | F #                        | -                  | -                |
| Selenium                      | mg/L    | 06/26/2012      | N001 | 4.00 - 14.00    | 0.0088 | F #                        | 0.00032            | -                |
| Specific Conductance          | umhos/c | 06/26/2012      | N001 | 4.00 - 14.00    | 6464   | F #                        | -                  | -                |
| Sulfate                       | mg/L    | 06/26/2012      | N001 | 4.00 - 14.00    | 3600   | F #                        | 50                 | -                |
| Temperature                   | C       | 06/26/2012      | N001 | 4.00 - 14.00    | 15.56  | F #                        | -                  | -                |
| Turbidity                     | NTU     | 06/26/2012      | N001 | 4.00 - 14.00    | 5.92   | F #                        | -                  | -                |
| Uranium                       | mg/L    | 06/26/2012      | N001 | 4.00 - 14.00    | 0.740  | F #                        | 2.9E-05            | -                |

GENERAL WATER QUALITY DATA BY LOCATION (USEE105) FOR SITE DUR01, Durango Mill Tailings Process Site

LOCATION: 0634 <well>

REPORT DATE: 12/4/2012 12:10 pm

| PARAMETER                                 | UNITS   | SAMPLE:<br>DATE | ID   | DEPTH.<br>RANGE | RESULT  | QUALIFIERS:<br>LAB DATA QA | DETECTION<br>LIMIT | UN-<br>CERTAINTY |
|---|---------|-----------------|------|-----------------|---------|----------------------------|--------------------|------------------|
| Alkalinity, Total (As CaCO <sub>3</sub> ) | mg/L    | 06/26/2012      | N001 | 8.00 - 18.00    | 466     | FQ #                       | -                  | -                |
| Manganese                                 | mg/L    | 06/26/2012      | N001 | 8.00 - 18.00    | 0.170   | FQ #                       | 0.00011            | -                |
| Molybdenum                                | mg/L    | 06/26/2012      | N001 | 8.00 - 18.00    | 0.00089 | B FQ #                     | 0.00032            | -                |
| Oxidation Reduction Potential             | mV      | 06/26/2012      | N001 | 8.00 - 18.00    | 47.8    | FQ #                       | -                  | -                |
| pH  | s.u.    | 06/26/2012      | N001 | 8.00 - 18.00    | 6.99    | FQ #                       | -                  | -                |
| Selenium                                  | mg/L    | 06/26/2012      | N001 | 8.00 - 18.00    | 0.00012 | FQ #                       | 3.2E-05            | -                |
| Specific Conductance                      | umhos/c | 06/26/2012      | N001 | 8.00 - 18.00    | 4673    | FQ #                       | -                  | -                |
| Sulfate                                   | mg/L    | 06/26/2012      | N001 | 8.00 - 18.00    | 2400    | FQ #                       | 25                 | -                |
| Temperature                               | C       | 06/26/2012      | N001 | 8.00 - 18.00    | 17.37   | FQ #                       | -                  | -                |
| Turbidity                                 | NTU     | 06/26/2012      | N001 | 8.00 - 18.00    | 2.97    | FQ #                       | -                  | -                |
| Uranium                                   | mg/L    | 06/26/2012      | N001 | 8.00 - 18.00    | 0.024   | FQ #                       | 2.9E-05            | -                |

GENERAL WATER QUALITY DATA BY LOCATION (USEE105) FOR SITE DUR01, Durango Mill Tailings Process Site

LOCATION: 0635 <well>

REPORT DATE: 12/4/2012 12:10 pm

| PARAMETER                     | UNITS   | SAMPLE:<br>DATE | ID   | DEPTH.<br>RANGE | RESULT | QUALIFIERS:<br>LAB DATA QA | DETECTION<br>LIMIT | UN-<br>CERTAINTY |
|-------------------------------|---------|-----------------|------|-----------------|--------|----------------------------|--------------------|------------------|
| Alkalinity, Total (As CaCO3)  | mg/L    | 06/26/2012      | N001 | 5.50 - 15.50    | 536    | F #                        | -                  | -                |
| Manganese                     | mg/L    | 06/26/2012      | N001 | 5.50 - 15.50    | 0.110  | F #                        | 0.00011            | -                |
| Molybdenum                    | mg/L    | 06/26/2012      | N001 | 5.50 - 15.50    | 0.0031 | F #                        | 0.00032            | -                |
| Oxidation Reduction Potential | mV      | 06/26/2012      | N001 | 5.50 - 15.50    | -36.3  | F #                        | -                  | -                |
| pH                            | s.u.    | 06/26/2012      | N001 | 5.50 - 15.50    | 6.78   | F #                        | -                  | -                |
| Selenium                      | mg/L    | 06/26/2012      | N001 | 5.50 - 15.50    | 0.0006 | F #                        | 3.2E-05            | -                |
| Specific Conductance          | umhos/c | 06/26/2012      | N001 | 5.50 - 15.50    | 2662   | F #                        | -                  | -                |
| Sulfate                       | mg/L    | 06/26/2012      | N001 | 5.50 - 15.50    | 1100   | F #                        | 25                 | -                |
| Temperature                   | C       | 06/26/2012      | N001 | 5.50 - 15.50    | 13.61  | F #                        | -                  | -                |
| Turbidity                     | NTU     | 06/26/2012      | N001 | 5.50 - 15.50    | 5.64   | F #                        | -                  | -                |
| Uranium                       | mg/L    | 06/26/2012      | N001 | 5.50 - 15.50    | 0.017  | F #                        | 2.9E-05            | -                |



GENERAL WATER QUALITY DATA BY LOCATION (USEE105) FOR SITE DUR01, Durango Mill Tailings Process Site  
LOCATION: 0652 <surface location> SURFACE WATER AND SED.  
REPORT DATE: 12/4/2012 12:10 pm

| PARAMETER                     | UNITS   | SAMPLE:<br>DATE | ID   | DEPTH.<br>RANGE | RESULT  | QUALIFIERS:<br>LAB DATA QA | DETECTION<br>LIMIT | UN-<br>CERTAINTY |
|-------------------------------|---------|-----------------|------|-----------------|---------|----------------------------|--------------------|------------------|
| Alkalinity, Total (As CaCO3)  | mg/L    | 09/18/2012      | N001 | 0.00 - 0.00     | 191     | #                          | -                  | -                |
| Cadmium                       | mg/L    | 09/18/2012      | N001 | 0.00 - 0.00     | 0.00014 | B #                        | 0.00011            | -                |
|                               | mg/L    | 09/18/2012      | N002 | 0.00 - 0.00     | 0.00016 | B #                        | 0.00011            | -                |
| Molybdenum                    | mg/L    | 09/18/2012      | N001 | 0.00 - 0.00     | 0.00189 | B #                        | 0.00017            | -                |
|                               | mg/L    | 09/18/2012      | N002 | 0.00 - 0.00     | 0.00201 | B #                        | 0.00017            | -                |
| Oxidation Reduction Potential | mV      | 09/18/2012      | N001 | 0.00 - 0.00     | 200     | #                          | -                  | -                |
| pH                            | s.u.    | 09/18/2012      | N001 | 0.00 - 0.00     | 7.87    | #                          | -                  | -                |
| Selenium                      | mg/L    | 09/18/2012      | N001 | 0.00 - 0.00     | 0.00150 | U #                        | 0.0015             | -                |
|                               | mg/L    | 09/18/2012      | N002 | 0.00 - 0.00     | 0.00150 | U #                        | 0.0015             | -                |
| Specific Conductance          | umhos/c | 09/18/2012      | N001 | 0.00 - 0.00     | 780     | #                          | -                  | -                |
| Temperature                   | C       | 09/18/2012      | N001 | 0.00 - 0.00     | 10.3    | #                          | -                  | -                |
| Turbidity                     | NTU     | 09/18/2012      | N001 | 0.00 - 0.00     | 5.37    | #                          | -                  | -                |
| Uranium                       | mg/L    | 09/18/2012      | N001 | 0.00 - 0.00     | 0.00158 | #                          | 6.7E-05            | -                |
|                               | mg/L    | 09/18/2012      | N002 | 0.00 - 0.00     | 0.00165 | #                          | 6.7E-05            | -                |

GENERAL WATER QUALITY DATA BY LOCATION (USEE105) FOR SITE DUR01, Durango Mill Tailings Process Site

LOCATION: 0691 <surface location>

REPORT DATE: 12/4/2012 12:10 pm

| PARAMETER                     | UNITS   | SAMPLE:<br>DATE | ID   | DEPTH.<br>RANGE | RESULT  | QUALIFIERS:<br>LAB DATA QA | DETECTION<br>LIMIT | UN-<br>CERTAINTY |
|-------------------------------|---------|-----------------|------|-----------------|---------|----------------------------|--------------------|------------------|
| Alkalinity, Total (As CaCO3)  | mg/L    | 09/18/2012      | N001 | 0.00 - 0.00     | 135     | #                          | -                  | -                |
| Cadmium                       | mg/L    | 09/18/2012      | N001 | 0.00 - 0.00     | 0.00011 | B #                        | 0.00011            | -                |
| Molybdenum                    | mg/L    | 09/18/2012      | N001 | 0.00 - 0.00     | 0.00204 | B #                        | 0.00017            | -                |
| Oxidation Reduction Potential | mV      | 09/18/2012      | N001 | 0.00 - 0.00     | 225     | #                          | -                  | -                |
| pH                            | s.u.    | 09/18/2012      | N001 | 0.00 - 0.00     | 8.15    | #                          | -                  | -                |
| Selenium                      | mg/L    | 09/18/2012      | N001 | 0.00 - 0.00     | 0.00150 | U #                        | 0.0015             | -                |
| Specific Conductance          | umhos/c | 09/18/2012      | N001 | 0.00 - 0.00     | 745     | #                          | -                  | -                |
| Temperature                   | C       | 09/18/2012      | N001 | 0.00 - 0.00     | 10.7    | #                          | -                  | -                |
| Turbidity                     | NTU     | 09/18/2012      | N001 | 0.00 - 0.00     | 6.03    | #                          | -                  | -                |
| Uranium                       | mg/L    | 09/18/2012      | N001 | 0.00 - 0.00     | 0.00171 | #                          | 6.7E-05            | -                |

GENERAL WATER QUALITY DATA BY LOCATION (USEE105) FOR SITE DUR01, Durango Mill Tailings Process Site

LOCATION: 0863 <well>

REPORT DATE: 12/4/2012 12:10 pm

| PARAMETER                     | UNITS   | SAMPLE: DATE | ID   | DEPTH RANGE   | RESULT  | QUALIFIERS: LAB DATA QA | DETECTION LIMIT | UN-CERTAINTY |
|-------------------------------|---------|--------------|------|---------------|---------|-------------------------|-----------------|--------------|
| Alkalinity, Total (As CaCO3)  | mg/L    | 06/26/2012   | N001 | 58.00 - 67.50 | 517     | F #                     | -               | -            |
| Cadmium                       | mg/L    | 06/26/2012   | N001 | 58.00 - 67.50 | 0.00012 | U F #                   | 0.00012         | -            |
|                               | mg/L    | 06/26/2012   | N002 | 58.00 - 67.50 | 0.00012 | U F #                   | 0.00012         | -            |
| Manganese                     | mg/L    | 06/26/2012   | N001 | 58.00 - 67.50 | 0.120   | F #                     | 0.00011         | -            |
|                               | mg/L    | 06/26/2012   | N002 | 58.00 - 67.50 | 0.120   | F #                     | 0.00011         | -            |
| Molybdenum                    | mg/L    | 06/26/2012   | N001 | 58.00 - 67.50 | 0.00073 | B F #                   | 0.00032         | -            |
|                               | mg/L    | 06/26/2012   | N002 | 58.00 - 67.50 | 0.00059 | B F #                   | 0.00032         | -            |
| Oxidation Reduction Potential | mV      | 06/26/2012   | N001 | 58.00 - 67.50 | -45.6   | F #                     | -               | -            |
| pH                            | s.u.    | 06/26/2012   | N001 | 58.00 - 67.50 | 6.90    | F #                     | -               | -            |
| Selenium                      | mg/L    | 06/26/2012   | N001 | 58.00 - 67.50 | 0.00003 | B F #                   | 3.2E-05         | -            |
|                               | mg/L    | 06/26/2012   | N002 | 58.00 - 67.50 | 0.00004 | B F #                   | 3.2E-05         | -            |
| Specific Conductance          | umhos/c | 06/26/2012   | N001 | 58.00 - 67.50 | 2283    | F #                     | -               | -            |
| Sulfate                       | mg/L    | 06/26/2012   | N001 | 58.00 - 67.50 | 680     | F #                     | 10              | -            |
|                               | mg/L    | 06/26/2012   | N002 | 58.00 - 67.50 | 680     | F #                     | 10              | -            |
| Temperature                   | C       | 06/26/2012   | N001 | 58.00 - 67.50 | 13.44   | F #                     | -               | -            |
| Turbidity                     | NTU     | 06/26/2012   | N001 | 58.00 - 67.50 | 5.72    | F #                     | -               | -            |
| Uranium                       | mg/L    | 06/26/2012   | N001 | 58.00 - 67.50 | 0.00018 | F #                     | 2.9E-05         | -            |



GENERAL WATER QUALITY DATA BY LOCATION (USEE105) FOR SITE DUR01, Durango Mill Tailings Process Site

LOCATION: 0863 <well>

REPORT DATE: 12/4/2012 12:10 pm

| PARAMETER | UNITS | SAMPLE:    |      | DEPTH.<br>RANGE | RESULT  | QUALIFIERS: |      |    | DETECTION<br>LIMIT | UN-<br>CERTAINTY |
|-----------|-------|------------|------|-----------------|---------|-------------|------|----|--------------------|------------------|
|           |       | DATE       | ID   |                 |         | LAB         | DATA | QA |                    |                  |
| Uranium   | mg/L  | 06/26/2012 | N002 | 58.00 - 67.50   | 0.00016 | F           | #    |    | 2.9E-05            | -                |

GENERAL WATER QUALITY DATA BY LOCATION (USEE105) FOR SITE DUR01, Durango Mill Tailings Process Site

LOCATION: 0863 <well>

REPORT DATE: 12/4/2012 12:10 pm

| PARAMETER | UNITS | SAMPLE:<br>DATE | ID | DEPTH.<br>RANGE | RESULT | QUALIFIERS:<br>LAB DATA QA | DETECTION<br>LIMIT | UN-<br>CERTAINTY |
|-----------|-------|-----------------|----|-----------------|--------|----------------------------|--------------------|------------------|
|-----------|-------|-----------------|----|-----------------|--------|----------------------------|--------------------|------------------|

RECORDS: SELECTED FROM USEE105 WHERE site\_code='DUR01' AND location\_code in ('0584','0586','0612','0617','0622','0630','0631','0633','0634','0635','0652','0691','0863') AND (data\_validation\_qualifiers IS NULL OR data\_validation\_qualifiers NOT LIKE '%R%' AND data\_validation\_qualifiers NOT LIKE '%X%') AND DATE\_SAMPLED >= #1/1/2012#

SAMPLE ID CODES: 000X = Filtered sample. N00X = Unfiltered sample. X = replicate number.

LAB QUALIFIERS:

- \* Replicate analysis not within control limits.
- + Correlation coefficient for MSA < 0.995.
- > Result above upper detection limit.
- A TIC is a suspected aldol-condensation product.
- B Inorganic: Result is between the IDL and CRDL. Organic & Radiochemistry: Analyte also found in method blank.
- C Pesticide result confirmed by GC-MS.
- D Analyte determined in diluted sample.
- E Inorganic: Estimate value because of interference, see case narrative. Organic: Analyte exceeded calibration range of the GC-MS.
- H Holding time expired, value suspect.
- I Increased detection limit due to required dilution.
- J Estimated
- M GFAA duplicate injection precision not met.
- N Inorganic or radiochemical: Spike sample recovery not within control limits. Organic: Tentatively identified compound (TIC).
- P > 25% difference in detected pesticide or Aroclor concentrations between 2 columns.
- S Result determined by method of standard addition (MSA).
- U Analytical result below detection limit.
- W Post-digestion spike outside control limits while sample absorbance < 50% of analytical spike absorbance.
- X Laboratory defined (USEPA CLP organic) qualifier, see case narrative.
- Y Laboratory defined (USEPA CLP organic) qualifier, see case narrative.
- Z Laboratory defined (USEPA CLP organic) qualifier, see case narrative.

DATA QUALIFIERS:

- |  |  |  |
|--|--|--|
| F Low flow sampling method used.                     | G Possible grout contamination, pH > 9.  | J Estimated value.                             |
| L Less than 3 bore volumes purged prior to sampling. | N Presumptive evidence that analyte is present. The analyte is "tentatively identified". | Q Qualitative result due to sampling technique |
| R Unusable result.                                   | U Parameter analyzed for but was not detected.   | X Location is undefined.                       |

QA QUALIFIER: # = validated according to Quality Assurance guidelines.

**Appendix B**

**Durango Raffinate Pond Processing Site (DUR02)  
Groundwater and Surface Water Quality Data**



This page intentionally left blank

GENERAL WATER QUALITY DATA BY LOCATION (USEE105) FOR SITE DUR02, Durango Raffinate Pond Process Site

LOCATION: 0594 <well> Original location DH-116.

REPORT DATE: 12/4/2012 12:15 pm

| PARAMETER                                 | UNITS   | SAMPLE:<br>DATE | ID   | DEPTH.<br>RANGE | RESULT | QUALIFIERS:<br>LAB DATA QA | DETECTION<br>LIMIT | UN-<br>CERTAINTY |
|---|---------|-----------------|------|-----------------|--------|----------------------------|--------------------|------------------|
| Alkalinity, Total (As CaCO <sub>3</sub> ) | mg/L    | 06/27/2012      | N001 | 8.50 - 38.50    | 418    | F #                        | -                  | -                |
| Oxidation Reduction Potential             | mV      | 06/27/2012      | N001 | 8.50 - 38.50    | -17.6  | F #                        | -                  | -                |
| pH  | s.u.    | 06/27/2012      | N001 | 8.50 - 38.50    | 6.80   | F #                        | -                  | -                |
| Selenium                                  | mg/L    | 06/27/2012      | N001 | 8.50 - 38.50    | 0.016  | F #                        | 0.00032            | -                |
| Specific Conductance                      | umhos/c | 06/27/2012      | N001 | 8.50 - 38.50    | 4657   | F #                        | -                  | -                |
| Temperature                               | C       | 06/27/2012      | N001 | 8.50 - 38.50    | 14.33  | F #                        | -                  | -                |
| Turbidity                                 | NTU     | 06/27/2012      | N001 | 8.50 - 38.50    | 9.80   | F #                        | -                  | -                |
| Uranium                                   | mg/L    | 06/27/2012      | N001 | 8.50 - 38.50    | 0.054  | F #                        | 2.9E-05            | -                |

GENERAL WATER QUALITY DATA BY LOCATION (USEE105) FOR SITE DUR02, Durango Raffinate Pond Process Site  
 LOCATION: 0598 <well> Original location Bureau of Rec well DH-110.  
 REPORT DATE: 12/4/2012 12:15 pm

| PARAMETER                     | UNITS   | SAMPLE:<br>DATE ID | DEPTH.<br>RANGE | RESULT | QUALIFIERS:<br>LAB DATA QA | DETECTION<br>LIMIT | UN-<br>CERTAINTY |
|-------------------------------|---------|--------------------|-----------------|--------|----------------------------|--------------------|------------------|
| Alkalinity, Total (As CaCO3)  | mg/L    | 06/27/2012 N001    | 66.20 - 96.20   | 508    | F #                        | -                  | -                |
| Oxidation Reduction Potential | mV      | 06/27/2012 N001    | 66.20 - 96.20   | -6.3   | F #                        | -                  | -                |
| pH                            | s.u.    | 06/27/2012 N001    | 66.20 - 96.20   | 6.89   | F #                        | -                  | -                |
| Selenium                      | mg/L    | 06/27/2012 N001    | 66.20 - 96.20   | 0.270  | F #                        | 0.00032            | -                |
| Specific Conductance          | umhos/c | 06/27/2012 N001    | 66.20 - 96.20   | 7847   | F #                        | -                  | -                |
| Temperature                   | C       | 06/27/2012 N001    | 66.20 - 96.20   | 13.98  | F #                        | -                  | -                |
| Turbidity                     | NTU     | 06/27/2012 N001    | 66.20 - 96.20   | 9.94   | F #                        | -                  | -                |
| Uranium                       | mg/L    | 06/27/2012 N001    | 66.20 - 96.20   | 0.100  | F #                        | 2.9E-05            | -                |



GENERAL WATER QUALITY DATA BY LOCATION (USEE105) FOR SITE DUR02, Durango Raffinate Pond Process Site

LOCATION: 0607 <well>

REPORT DATE: 12/4/2012 12:15 pm

| PARAMETER                     | UNITS   | SAMPLE:<br>DATE | ID   | DEPTH:<br>RANGE | RESULT | QUALIFIERS:<br>LAB DATA QA | DETECTION<br>LIMIT | UN-<br>CERTAINTY |
|-------------------------------|---------|-----------------|------|-----------------|--------|----------------------------|--------------------|------------------|
| Alkalinity, Total (As CaCO3)  | mg/L    | 06/27/2012      | 0001 | 35.00 - 55.00   | 371    | FQ #                       | -                  | -                |
| Oxidation Reduction Potential | mV      | 06/27/2012      | N001 | 35.00 - 55.00   | 57.3   | FQ #                       | -                  | -                |
| pH                            | s.u.    | 06/27/2012      | N001 | 35.00 - 55.00   | 7.41   | FQ #                       | -                  | -                |
| Selenium                      | mg/L    | 06/27/2012      | 0001 | 35.00 - 55.00   | 0.350  | FQ #                       | 0.00032            | -                |
| Specific Conductance          | umhos/c | 06/27/2012      | N001 | 35.00 - 55.00   | 2492   | FQ #                       | -                  | -                |
| Temperature                   | C       | 06/27/2012      | N001 | 35.00 - 55.00   | 17.59  | FQ #                       | -                  | -                |
| Turbidity                     | NTU     | 06/27/2012      | N001 | 35.00 - 55.00   | 13.8   | FQ #                       | -                  | -                |
| Uranium                       | mg/L    | 06/27/2012      | 0001 | 35.00 - 55.00   | 0.0025 | FQ #                       | 2.9E-05            | -                |

GENERAL WATER QUALITY DATA BY LOCATION (USEE105) FOR SITE DUR02, Durango Raffinate Pond Process Site  
LOCATION: 0654 <surface location> RESERVED FOR CDAY  
REPORT DATE: 12/4/2012 12:15 pm

| PARAMETER                     | UNITS   | SAMPLE:<br>DATE | ID   | DEPTH.<br>RANGE | RESULT  | QUALIFIERS:<br>LAB DATA QA | DETECTION<br>LIMIT | UN-<br>CERTAINTY |
|-------------------------------|---------|-----------------|------|-----------------|---------|----------------------------|--------------------|------------------|
| Alkalinity, Total (As CaCO3)  | mg/L    | 09/18/2012      | N001 | 0.00 - 0.00     | 130     | #                          | -                  | -                |
| Cadmium                       | mg/L    | 09/18/2012      | N001 | 0.00 - 0.00     | 0.00011 | U #                        | 0.00011            | -                |
| Molybdenum                    | mg/L    | 09/18/2012      | N001 | 0.00 - 0.00     | 0.00204 | B #                        | 0.00017            | -                |
| Oxidation Reduction Potential | mV      | 09/18/2012      | N001 | 0.00 - 0.00     | 205     | #                          | -                  | -                |
| pH                            | s.u.    | 09/18/2012      | N001 | 0.00 - 0.00     | 8.34    | #                          | -                  | -                |
| Selenium                      | mg/L    | 09/18/2012      | N001 | 0.00 - 0.00     | 0.00150 | U #                        | 0.0015             | -                |
| Specific Conductance          | umhos/c | 09/18/2012      | N001 | 0.00 - 0.00     | 750     | #                          | -                  | -                |
| Temperature                   | C       | 09/18/2012      | N001 | 0.00 - 0.00     | 11.4    | #                          | -                  | -                |
| Turbidity                     | NTU     | 09/18/2012      | N001 | 0.00 - 0.00     | 7.48    | #                          | -                  | -                |
| Uranium                       | mg/L    | 09/18/2012      | N001 | 0.00 - 0.00     | 0.0017  | #                          | 6.7E-05            | -                |

GENERAL WATER QUALITY DATA BY LOCATION (USEE105) FOR SITE DUR02, Durango Raffinate Pond Process Site  
 LOCATION: 0656 <surface location> RESERVED FOR CDAY  
 REPORT DATE: 12/4/2012 12:15 pm

| PARAMETER                     | UNITS   | SAMPLE:<br>DATE | ID   | DEPTH.<br>RANGE | RESULT  | QUALIFIERS:<br>LAB DATA QA | DETECTION<br>LIMIT | UN-<br>CERTAINTY |
|-------------------------------|---------|-----------------|------|-----------------|---------|----------------------------|--------------------|------------------|
| Alkalinity, Total (As CaCO3)  | mg/L    | 09/18/2012      | N001 | 0.00 - 0.00     | 215     | #                          | -                  | -                |
| Cadmium                       | mg/L    | 09/18/2012      | N001 | 0.00 - 0.00     | 0.00011 | B #                        | 0.00011            | -                |
| Molybdenum                    | mg/L    | 09/18/2012      | N001 | 0.00 - 0.00     | 0.00196 | B #                        | 0.00017            | -                |
| Oxidation Reduction Potential | mV      | 09/18/2012      | N001 | 0.00 - 0.00     | 230     | #                          | -                  | -                |
| pH                            | s.u.    | 09/18/2012      | N001 | 0.00 - 0.00     | 8.40    | #                          | -                  | -                |
| Selenium                      | mg/L    | 09/18/2012      | N001 | 0.00 - 0.00     | 0.00150 | U #                        | 0.0015             | -                |
| Specific Conductance          | umhos/c | 09/18/2012      | N001 | 0.00 - 0.00     | 755     | #                          | -                  | -                |
| Temperature                   | C       | 09/18/2012      | N001 | 0.00 - 0.00     | 11.0    | #                          | -                  | -                |
| Turbidity                     | NTU     | 09/18/2012      | N001 | 0.00 - 0.00     | 7.58    | #                          | -                  | -                |
| Uranium                       | mg/L    | 09/18/2012      | N001 | 0.00 - 0.00     | 0.00165 | #                          | 6.7E-05            | -                |



GENERAL WATER QUALITY DATA BY LOCATION (USEE105) FOR SITE DUR02, Durango Raffinate Pond Process Site

LOCATION: 0879 <well>

REPORT DATE: 12/4/2012 12:15 pm

| PARAMETER                     | UNITS   | SAMPLE:<br>DATE | ID   | DEPTH.<br>RANGE | RESULT | QUALIFIERS:<br>LAB DATA QA | DETECTION<br>LIMIT | UN-<br>CERTAINTY |
|-------------------------------|---------|-----------------|------|-----------------|--------|----------------------------|--------------------|------------------|
| Alkalinity, Total (As CaCO3)  | mg/L    | 06/27/2012      | N001 | 27.00 - 36.90   | 429    | #                          | -                  | -                |
| Oxidation Reduction Potential | mV      | 06/27/2012      | N001 | 27.00 - 36.90   | -37.8  | #                          | -                  | -                |
| pH                            | s.u.    | 06/27/2012      | N001 | 27.00 - 36.90   | 6.78   | #                          | -                  | -                |
| Selenium                      | mg/L    | 06/27/2012      | N001 | 27.00 - 36.90   | 0.038  | #                          | 0.00032            | -                |
| Specific Conductance          | umhos/c | 06/27/2012      | N001 | 27.00 - 36.90   | 8386   | #                          | -                  | -                |
| Temperature                   | C       | 06/27/2012      | N001 | 27.00 - 36.90   | 12.99  | #                          | -                  | -                |
| Turbidity                     | NTU     | 06/27/2012      | N001 | 27.00 - 36.90   | 6.09   | #                          | -                  | -                |
| Uranium                       | mg/L    | 06/27/2012      | N001 | 27.00 - 36.90   | 0.086  | #                          | 2.9E-05            | -                |

GENERAL WATER QUALITY DATA BY LOCATION (USEE105) FOR SITE DUR02, Durango Raffinate Pond Process Site

LOCATION: 0884 <well>

REPORT DATE: 12/4/2012 12:15 pm

| PARAMETER                     | UNITS   | SAMPLE:<br>DATE | ID   | DEPTH.<br>RANGE | RESULT | QUALIFIERS:<br>LAB DATA QA | DETECTION<br>LIMIT | UN-<br>CERTAINTY |
|-------------------------------|---------|-----------------|------|-----------------|--------|----------------------------|--------------------|------------------|
| Alkalinity, Total (As CaCO3)  | mg/L    | 06/27/2012      | N001 | 36.50 - 46.50   | 411    | F #                        | -                  | -                |
| Oxidation Reduction Potential | mV      | 06/27/2012      | N001 | 36.50 - 46.50   | 188.8  | F #                        | -                  | -                |
| pH                            | s.u.    | 06/27/2012      | N001 | 36.50 - 46.50   | 6.92   | F #                        | -                  | -                |
| Selenium                      | mg/L    | 06/27/2012      | N001 | 36.50 - 46.50   | 0.620  | F #                        | 0.00032            | -                |
| Specific Conductance          | umhos/c | 06/27/2012      | N001 | 36.50 - 46.50   | 4408   | F #                        | -                  | -                |
| Temperature                   | C       | 06/27/2012      | N001 | 36.50 - 46.50   | 14.22  | F #                        | -                  | -                |
| Turbidity                     | NTU     | 06/27/2012      | N001 | 36.50 - 46.50   | 2.20   | F #                        | -                  | -                |
| Uranium                       | mg/L    | 06/27/2012      | N001 | 36.50 - 46.50   | 0.140  | F #                        | 2.9E-05            | -                |

GENERAL WATER QUALITY DATA BY LOCATION (USEE105) FOR SITE DUR02, Durango Raffinate Pond Process Site

LOCATION: 0884 <well>

REPORT DATE: 12/4/2012 12:15 pm

| PARAMETER | UNITS | SAMPLE:<br>DATE | ID | DEPTH.<br>RANGE | RESULT | QUALIFIERS:<br>LAB DATA QA | DETECTION<br>LIMIT | UN-<br>CERTAINTY |
|-----------|-------|-----------------|----|-----------------|--------|----------------------------|--------------------|------------------|
|-----------|-------|-----------------|----|-----------------|--------|----------------------------|--------------------|------------------|

RECORDS: SELECTED FROM USEE105 WHERE site\_code='DUR02' AND location\_code in('0588','0594','0598','0599','0607','0654','0656','0879','0884') AND (data\_validation\_qualifiers IS NULL OR data\_validation\_qualifiers NOT LIKE '%R%' AND data\_validation\_qualifiers NOT LIKE '%X%') AND DATE\_SAMPLED >= #1/1/2012#

SAMPLE ID CODES: 000X = Filtered sample. N00X = Unfiltered sample. X = replicate number.

LAB QUALIFIERS:

- \* Replicate analysis not within control limits.
- + Correlation coefficient for MSA < 0.995.
- > Result above upper detection limit.
- A TIC is a suspected aldol-condensation product.
- B Inorganic: Result is between the IDL and CRDL. Organic & Radiochemistry: Analyte also found in method blank.
- C Pesticide result confirmed by GC-MS.
- D Analyte determined in diluted sample.
- E Inorganic: Estimate value because of interference, see case narrative. Organic: Analyte exceeded calibration range of the GC-MS.
- H Holding time expired, value suspect.
- I Increased detection limit due to required dilution.
- J Estimated
- M GFAA duplicate injection precision not met.
- N Inorganic or radiochemical: Spike sample recovery not within control limits. Organic: Tentatively identified compound (TIC).
- P > 25% difference in detected pesticide or Aroclor concentrations between 2 columns.
- S Result determined by method of standard addition (MSA).
- U Analytical result below detection limit.
- W Post-digestion spike outside control limits while sample absorbance < 50% of analytical spike absorbance.
- X Laboratory defined (USEPA CLP organic) qualifier, see case narrative.
- Y Laboratory defined (USEPA CLP organic) qualifier, see case narrative.
- Z Laboratory defined (USEPA CLP organic) qualifier, see case narrative.

DATA QUALIFIERS:

- F Low flow sampling method used.
- L Less than 3 bore volumes purged prior to sampling.
- R Unusable result.
- G Possible grout contamination, pH > 9.
- N Presumptive evidence that analyte is present. The analyte is "tentatively identified".
- U Parameter analyzed for but was not detected.
- J Estimated value.
- Q Qualitative result due to sampling technique
- X Location is undefined.

QA QUALIFIER: # = validated according to Quality Assurance guidelines.



WM-00048

**Verification Monitoring Report for the  
Durango, Colorado, Processing Sites, November 2012**

The U.S. Department of Energy (DOE) has prepared a Verification Monitoring Report updating groundwater and surface water monitoring data based on the November 2012 annual sampling event at the Durango, Colorado, Processing Site. At your request, you are receiving a hard copy of the report.

The report is also available for your review on the Internet at the DOE Office of Legacy Management (LM) website – [www.lm.doe.gov](http://www.lm.doe.gov). From the LM website home page, select the United States map icon titled Legacy Management Sites. Then select the Durango Processing Site from the drop-down list. The report will be available on the Durango Processing Sites page of the LM website under Site Documents and Links.



U.S. DEPARTMENT OF

**ENERGY**

| Legacy  
Management