

Table 6.2.1-2 Basic Specifications of PCCV

| US-APWR Specification | Value |
|---------------------------------|--------------------------------------|
| A. PCCV | |
| Design Conditions | |
| Design Pressure [Pd] | 68 psig |
| Test Pressure [Pt] | 78.2 psig |
| Design External Pressure | 3.9 psig |
| Design Temperature | 300°F |
| Dimensions | |
| Inner Diameter | 149 ft.- 2 in. |
| Inner Height | 226 ft.- 5 in. |
| Wall Thickness [Cylinder] | 4 ft.- 4 in. |
| Wall Thickness [Dome] | 3 ft.- 8 in. 4 ft.- 4 in. |
| Liner Thickness | 0.25 in. |
| Large Openings | |
| Equipment Hatch (1) | ID 27 ft.- 11 in. |
| Personnel airlocks (2) | ID 8.5 ft. |
| Free Volume | 2.80x10 ⁶ ft ³ |
| Design leakage rate | 0.1% air mass/24 hours |
| Design life | 60 years |
| Material Properties | |
| Concrete Design Strength | |
| PCCV | 7,000 psi |
| BASEMAT | 54,000 psi |
| Reinforcement | ASTM A615 Gr.60 |
| Liner plate | ASTM A516 Gr.60 |
| Tendon Specifications | |
| PS System | VSL or (BBR) |
| Tendon Capacity | 13 MN CLASS |

MIC-03-06-00073

MIC-03-
06-00072

Security-Related Information – Withheld Under 10 CFR 2.390

Figure 6.2.1-5 Containment Sectional View

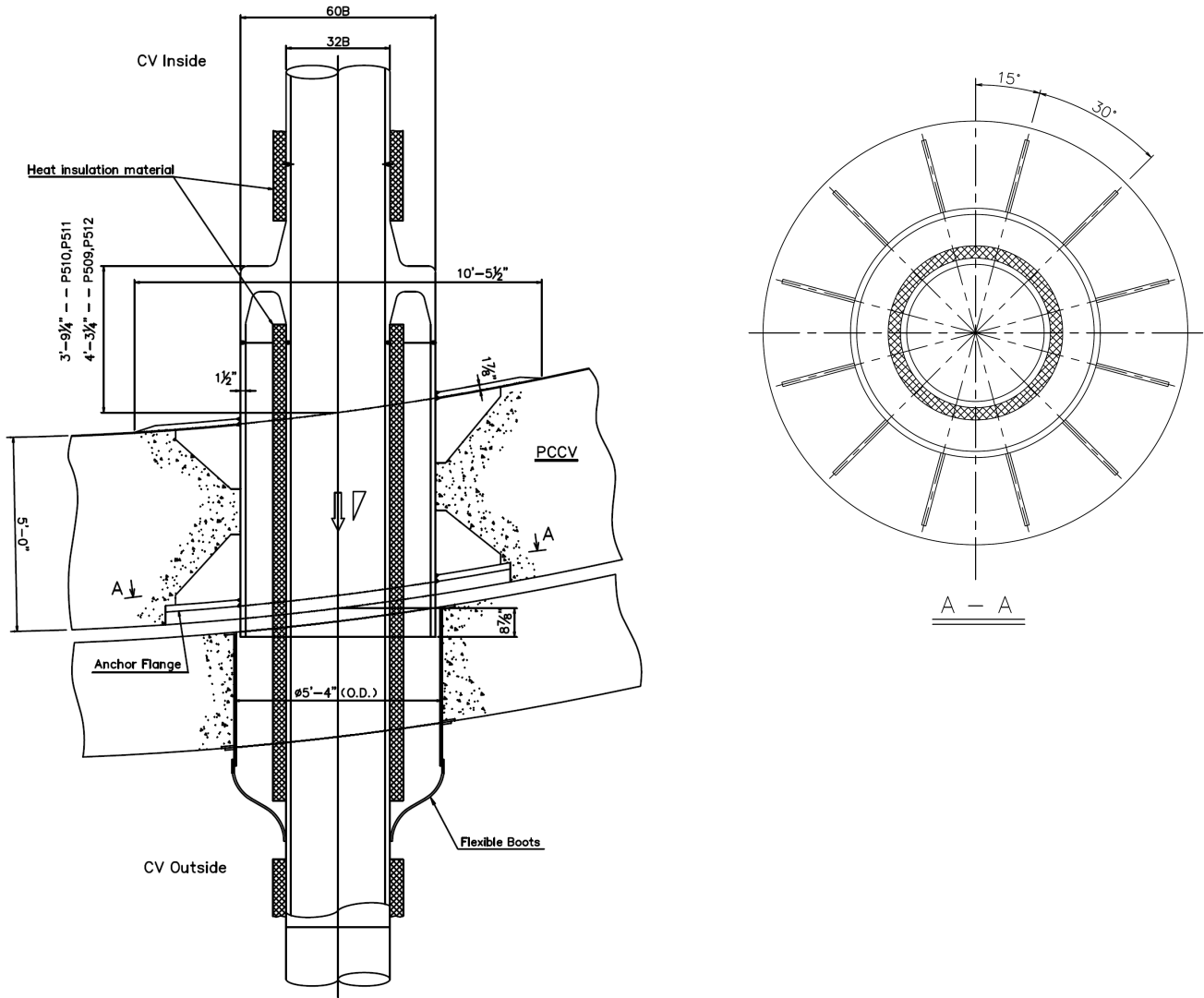


Figure 6.2.1-6 Main Steam Line Penetrations

MIC-03-06-00072

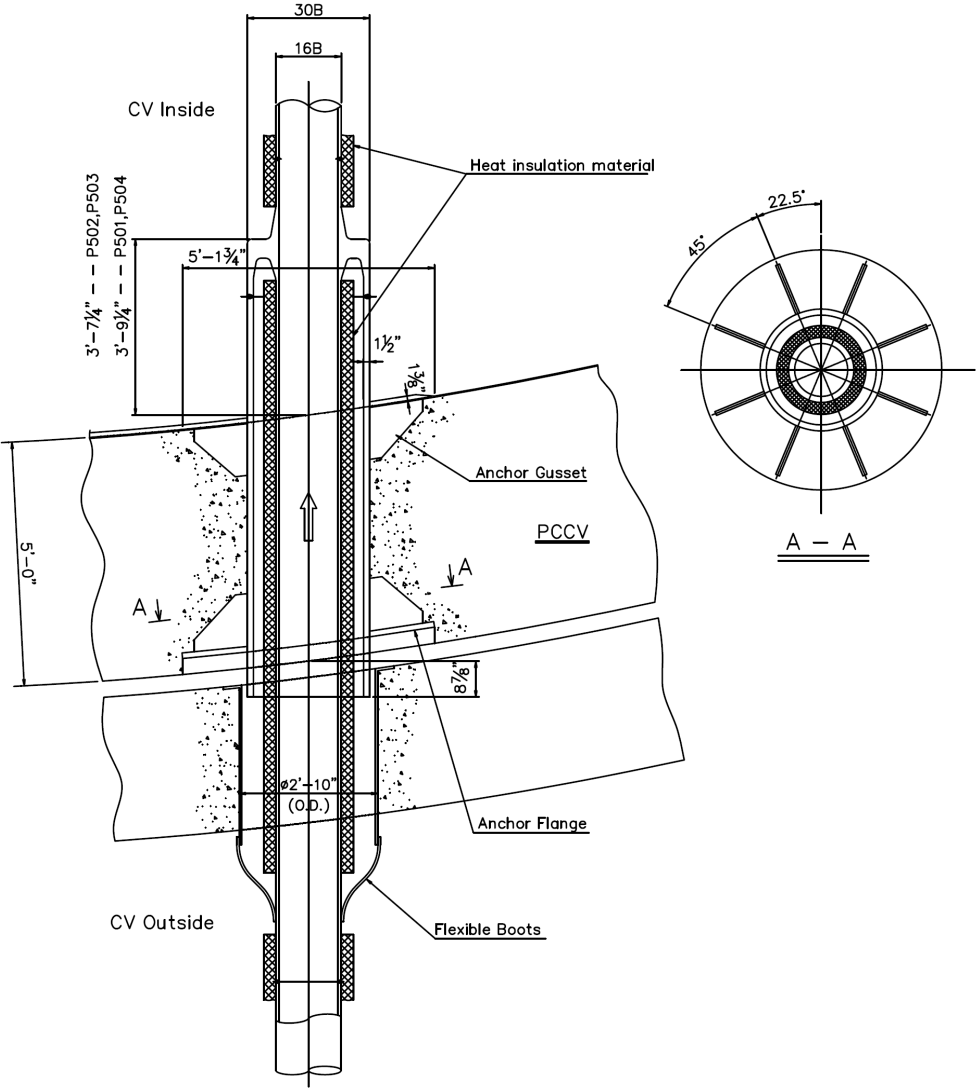
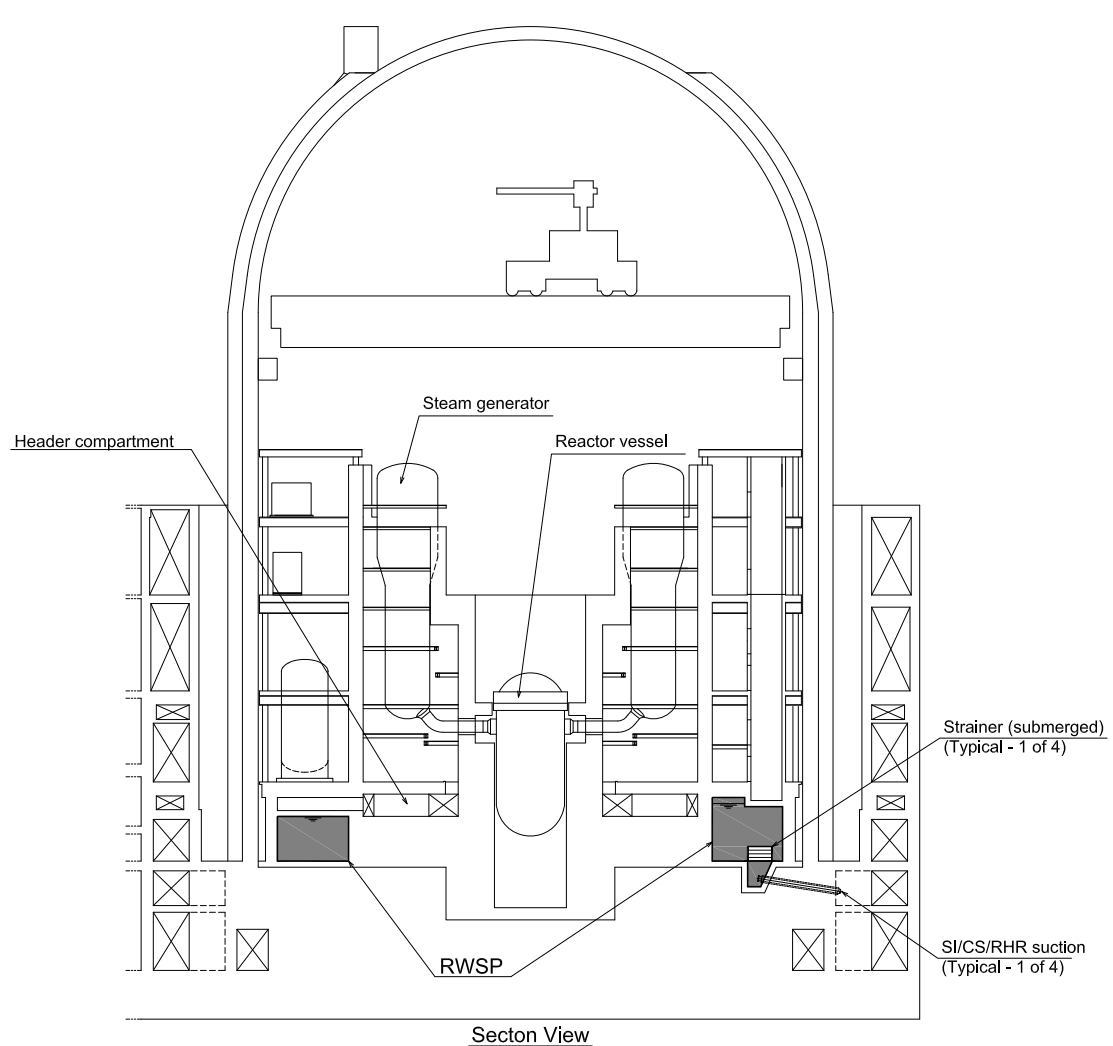


Figure 6.2.1-7 Feedwater Line Penetrations

MIC-03-06-00072



MIC-03-06-00069

MIC-03-06-00071

Figure 6.2.2-9 Sectional View of RWSP and ECC/CS Strainers

MIC-03-06-
00069

Security-Related Information – Withheld Under 10 CFR 2.390

Figure 6.2.5-2 Airflow Patterns in Response to CSS Operation (for Design Evaluation of Hydrogen Monitoring and Control System)

MIC-03-06-
00069

Security-Related Information – Withheld Under 10 CFR 2.390

Figure 6.4-1 Control Room Envelope

MIC-03-06-
00069

Security-Related Information – Withheld Under 10 CFR 2.390

**Figure 6.4-5 Main Control Room Emergency Filtration System Plan
View**

MIC-03-06-
00069

Security-Related Information – Withheld Under 10 CFR 2.390

**Figure 6.4-6 Main Control Room Emergency Filtration System
Sectional View**

Security-Related Information – Withheld Under 10 CFR 2.390

Figure 6.5-2 Safeguard Component Area and Penetration Area at Elevation -26'-4" – Plant View

Security-Related Information – Withheld Under 10 CFR 2.390

Figure 6.5-3 Safeguard Component Area and Penetration Area at Elevation -8'-7" – Plant View

Security-Related Information – Withheld Under 10 CFR 2.390

Figure 6.5-4 Safeguard Component Area and Penetration Area at Elevation 3'-7" – Plant View

Security-Related Information – Withheld Under 10 CFR 2.390

Figure 6.5-5 Safeguard Component Area and Penetration Area at Elevation 13'-6" – Plant View

Security-Related Information – Withheld Under 10 CFR 2.390

Figure 6.5-6 Safeguard Component Area and Penetration Area at Elevation 25'-3" – Plant View

Security-Related Information – Withheld Under 10 CFR 2.390

Figure 6.5-7 Safeguard Component Area and Penetration Area at Elevation 35'-2" – Plant View

Security-Related Information – Withheld Under 10 CFR 2.390

Figure 6.5-8 Safeguard Component Area and Penetration Area at Elevation 50'-2" – Plant View

Security-Related Information – Withheld Under 10 CFR 2.390

Figure 6.5-9 Safeguard Component Area and Penetration Area at Elevation 76'-5" – Plant View