

**Table C-1. Summary of Seismic Walkdown Checklists**

COMPONENT ID	DESCRIPTION	Anchorage Verification Confirmed?	AWC	COMMENTS	PAGE
0VC01CA	ASSY - FAN, CR HVAC SUPPLY 0A	Y	3-19	SWEL 1	C- 7
1AP05E	4160V SWGR 142X	N	3-30	SWEL 1	C- 13
1AP06E-9	TRANSFORMER, 136X	Y	3-21	SWEL 1	C- 23
1AP15E	480V SWGR 133	N	4-03	SWEL 1	C- 29
1AP19E	DIV I 480V SWGR 135X	Y	4-19	SWEL 1	C- 35
1AP19E-102B	TRANSFORMER, 135X	Y	4-19	SWEL 1	C- 39
1AP21E	DIV II 480V SWGR 136X	Y	3-21	SWEL 1	C- 47
1AP71E	DIV I 480V MCC 135X-1	N	4-07	SWEL 1	C- 58
1AP73E	DIV I 480V MCC 135X-3	Y	4-19	SWEL 1	C- 62
1AP78E	DIV II 480V MCC 136X-1	N	3-01	SWEL 1	C- 66
1AP81E	DIV II 480V MCC 136X-3	Y	3-21	SWEL 1	C- 72
1B21-A004C	SRV 1B21-F013C ACCUMULATOR	N	OUTAGE	SWEL 1	
1B21-F013C	C MAIN STEAM LINE SAFETY RELIEF VALVE	N/A	OUTAGE	SWEL 1	
1B21-F013C-A	SRV C UMF-1 SOLENOID VALVE 'A'	N/A	OUTAGE	SWEL 1	
1B21-F022C	C MS INBD ISOL	N/A	OUTAGE	SWEL 1	
1B21-F028C	C OTBD MAIN STEAM ISOLATION VALVE	N/A	OUTAGE	SWEL 1	
1B21-F028C-P2	VALVE, SOLENOID, O/B MSIV	N/A	OUTAGE	SWEL 1	
1B21-F067C	C MAIN STEAM OTBD DRAIN LINE ISOL VALVE	N/A	OUTAGE	SWEL 1	
1C11-D001001	CONTROL UNIT CRD HYDRAULIC 2659	Y	1-06	SWEL 1	C- 76
1C11-D001089	CONTROL UNIT CRD HYDRAULIC 3003	Y	1-06	SWEL 1	C- 80
1C11-D001093	CONTROL UNIT CRD HYDRAULIC 4259	Y	1-05	SWEL 1	C- 87
1C11-D001182	CONTROL UNIT CRD HYDRAULIC 3403	Y	1-05	SWEL 1	C- 95
1C11-D2659-125	CRD HCU SCRAM WATER ACCUMULATOR	N/A	1-06	SWEL 1	C- 101
1C11-D2659-126	CRD HCU SCRAM INLET VALVE	N/A	1-06	SWEL 1	C- 103
1C11-D2659-127	CRD HCU SCRAM OUTLET VALVE	N/A	1-06	SWEL 1	C- 105
1C11-D3003-125	CRD HCU SCRAM WATER ACCUMULATOR	N/A	1-06	SWEL 1	C- 107
1C11-D3003-126	CRD HCU SCRAM INLET VALVE	N/A	1-06	SWEL 1	C- 109
1C11-D3003-127	CRD HCU SCRAM OUTLET VALVE	N/A	1-06	SWEL 1	C- 111
1C11-D3403-125	CRD HCU SCRAM WATER ACCUMULATOR	N/A	1-05	SWEL 1	C- 113

COMPONENT ID	DESCRIPTION	Anchorage Verification Confirmed?	AWC	COMMENTS	PAGE
1C11-D3403-126	CRD HCU SCRAM INLET VALVE	N/A	1-05	SWEL 1	C- 115
1C11-D3403-127	CRD HCU SCRAM OUTLET VALVE	N/A	1-05	SWEL 1	C- 117
1C11-D4259-125	CRD HCU SCRAM WATER ACCUMULATOR	N/A	1-05	SWEL 1	C- 119
1C11-D4259-126	CRD HCU SCRAM INLET VALVE	N/A	1-05	SWEL 1	C- 121
1C11-D4259-127	CRD HCU SCRAM OUTLET VALVE	N/A	1-05	SWEL 1	C- 123
1C41-A001	STANDBY LIQUID CONTROL SOLUTION TANK	Y	4-01	SWEL 1	C- 125
1C41-C001A	A STANDBY LIQUID CONTROL PUMP	Y	4-01	SWEL 1	C- 130
1DC003E	250V DC BATTERY CHARGER NO. 1	Y	4-19	SWEL 1	C- 135
1DC005E	250V MCC	Y	4-19	SWEL 1	C- 139
1DC01E	250VDC BATTERY	Y	1-04	SWEL 1	C- 145
1DC02E	DIV I 250VDC DISTRIBUTION BUS 1	Y	4-19	SWEL 1	C- 151
1DC12E	125VDC DISTRIBUTION PANEL 112X (in 1DC15E MCC)	Y	3-21	SWEL 1	C- 157
1DC14E	DIV II 125VDC BATTERY	Y	3-22	SWEL 1	C- 160
1DC15E	DIV II 125VDC DISTRIBUTION BUS 1B	Y	3-21	SWEL 1	C- 165
1DC16E	125V DC BATTERY CHARGER NO. 1B	Y	3-21	SWEL 1	C- 171
1DG011	1A DG COOLING WTR STRAINER BACKWASH VALVE	N/A	3-27	SWEL 1	C- 177
1DG01A	1A DG COOLER	N	3-25	SWEL 1	C- 181
1DG01F	1A DG COOLING WATER STRAINER	Y	3-27	SWEL 1	C- 186
1DG01K	1A DIESEL GENERATOR	Y	3-25	SWEL 1	C- 191
1DG01P	1A DG COOLING WATER PUMP	Y	3-27	SWEL 1	C- 199
1DG01S	1A DG STARTING AIR COMPRESSOR PACKAGE	Y	3-25	SWEL 1	C- 204
1DG02JA	1A DG A GENERATOR CONTROL PANEL	Y	3-25	SWEL 1	C- 211
1DG035	LPCS PUMP MOTOR COOLER UPSTRM INLET VALVE	N/A	4-14	SWEL 1	C- 218
1DG03J	1A DG ENGINE CONTROL PANEL	Y	3-25	SWEL 1	C- 221
1DG061A	ASSY - VALVE, 1A D/G BANK A STARTER AIR SUPPLY	N/A	3-25	SWEL 1	C- 223
1DO005T	DG 1A DAY TK	Y	3-26	SWEL 1	C- 228
1DO01P	PUMP, DIESEL OILTRANSFER	Y	3-28	SWEL 1	C- 232
1E12-B001B	B RHR HEAT EXCHANGER	Y	3-15	SWEL 1	C- 237



COMPONENT ID	DESCRIPTION	Anchorage Verification Confirmed?	AWC	COMMENTS	PAGE
1E12-C002B	1B RESIDUAL HEAT REMOVAL PMP	Y	3-14	SWEL 1	C- 242
1E12-C300B	B RHR SERVICE WATER PUMP	Y	4-18	SWEL 1	C- 247
1E12-D300B	B RHR SERVICE WATER STRAINER	Y	3-27	SWEL 1	C- 251
1E12-F003B	B RHR HX OUTLET VALVE	N/A	3-18	SWEL 1	C- 257
1E12-F004B	B RHR PUMP SUP POOL SUCT ISOL VALVE	N/A	3-13	SWEL 1	C- 262
1E12-F011B	B RHR HX STEAM CONDENSING SUP POOL RETURN ISOL VALVE	N/A	3-18	SWEL 1	C- 267
1E12-F024B	B RHR PUMP FULL FLOW TEST ISOL VALVE	N/A	3-15	SWEL 1	C- 271
1E12-F036B	B RHR HX STEAM CONDENSING RCIC RETURN HDR RELIEF VALVE	N/A	3-16	SWEL 1	C- 274
1E12-F048B	B RHR HX BYPASS VALVE	N/A	3-18	SWEL 1	C- 277
1E12-F051B	B RHR HX RCIC STEAM INLET PRESS CONT VALVE	N/A	3-15	SWEL 1	C- 281
1E12-F055B	B RHR HX RCIC STEAM INLET HEADER RELIEF VALVE	N/A	3-15	SWEL 1	C- 286
1E12-F068A	A RHR HX SERVICE WATER OUTLET VALVE	N/A	4-17	SWEL 1	C- 290
1E12-F068B	B RHR HX SERVICE WATER OUTLET VALVE	N/A	3-14	SWEL 1	C- 294
1E12-N005B	B RHR HX SERVICE WATER DSCH TEMP ELEMENT	N/A	3-18	SWEL 1	C- 298
1E12-N007B	B RHR HX SERVICE WATER INLET FLOW	N	3-14	SWEL 1	C- 301
1E12-N015B	B RHR FLOW	N	3-14	SWEL 1	C- 311
1E12-N027B	B RHR HX OUTLET TEMPERATURE ELEMENT	N/A	3-18	SWEL 1	C- 314
1E21-C001	LPCS PUMP	Y	1-16	SWEL 1	C- 317
1E21-N003	LPCS PP DISCH FLOW XMITTER	N	1-16	SWEL 1	C- 322
1E22-C001	PMP HI PRESS CORE SPRAY	Y	2-03	SWEL 1	C- 326
1E22-F004	HPCS INJECTION ISOL VALVE	N/A	2-01	SWEL 1	C- 330
1E22-F015	HPCS PUMP SUP POOL SUCT ISOL VALVE	N/A	2-04	SWEL 1	C- 335
1E22-F023	HPCS FULL FLOW TEST ISOL VALVE	N/A	2-02	SWEL 1	C- 339
1E22-N004	HPCS PUMP DSCH PRESS	N	2-03	SWEL 1	C- 345
1E22-N005	HPCS PUMP DSCH FLOW	N	2-03	SWEL 1	C- 353
1E51-C001	RCIC PUMP	Y	1-16	SWEL 1	C- 355
1E51-F013	RCIC INJECTION OTBD ISOL VALVE	N/A	1-17	SWEL 1	C- 359
1E51-F031	RCIC PUMP SUP POOL SUCT ISOL VALVE	N/A	1-25	SWEL 1	C- 361

COMPONENT ID	DESCRIPTION	Anchorage Verification Confirmed?	AWC	COMMENTS	PAGE
1E51-F045	RCIC TURBINE STEAM SUPPLY VALVE	N/A	1-16	SWEL 1	C- 365
1E51-N004	RCIC PUMP DSCH PRESS	N	1-16	SWEL 1	C- 369
1FC133	FUEL POOL RHR SUCT SUPPLY HEADER DRAIN VALVE	N/A	3-13	SWEL 2	C- 380
1FC140	FUEL POOL RHR SUCT SUPPLY VALVE	N/A	3-06	SWEL 2	C- 384
1H13-P601	ASSY - PANEL, EMERG CORE COOL SYST	N	3-31	SWEL 1	C- 388
1H13-P602	ASSY - PANEL, RWCU/RX RECIRC CONTROL	N	3-31	SWEL 1	C- 392
1HG001A	H2 RECOMB 1HG01A U-1 DW SUCT. VLV	N/A	3-02	SWEL 1	C- 396
1HG005A	H2 RECOMB 1HG01A U-1 SUP POOL DIS VLV	N/A	3-10	SWEL 1	C- 400
1HG01A	ASSY_-_BLOWER, H2 RECOMBINER	N	3-02	SWEL 1	C- 404
1PI-DG094	1A DG A AIR RECEIVER	N/A	3-25	SWEL 1	C- 413
1PL33J	B/C RHR PUMP ROOM VENTILATION PANEL	Y	3-17	SWEL 1	C- 417
1PL34J	A RHR PUMP ROOM VENTILATION PANEL	Y	4-16	SWEL 1	C- 423
1PL35J	LPCS PUMP ROOM VENTILATION PANEL	N	4-14	SWEL 1	C- 427
1TE-HG015A	HYDROGEN RECOMBINER BLWR INL GAS (TE-2A)	N/A	3-02	SWEL 1	C- 431
1VQ029	DW VENT/PURGE FROM RX BLDG UPSTRM ISOL	N/A	4-08	SWEL 1	C- 435
1VQ030	DW VENT/PURGE INLET DWNST ISOL VALVE	N/A	3-07	SWEL 1	C- 439
1VQ031	SUP POOL VENT/PURGE OTLT UPSTRM ISOL	N/A	3-09	SWEL 1	C- 445
1VQ032	SUP POOL VENT/PURGE OTLT UPSTRM ISOL BYP-20 FT.OVHD	N/A	3-09	SWEL 1	C- 451
1VQ034	DW VENT/PURGE OTLT UPSTRM ISOL	N/A	3-06	SWEL 1	C- 458
1VQ035	DW VENT/PURGE OTLT UPSTRM ISOL BYP	N/A	3-06	SWEL 1	C- 462
1VQ036	DW VENT/PURGE OTLT DWNST ISOL	N/A	3-06	SWEL 1	C- 466
1VQ040	SUP CHBR VENT/PURGE OUTLET DWNST ISOL VALVE	N/A	3-09	SWEL 1	C- 470
1VX04C	FAN, ESS SWGR DIV-2 VENT SUPPLY	Y	3-21	SWEL 1	C- 474
1VX05C	FAN, ESS SWGR DIV-2 BATT ROOM EXH	N	3-21	SWEL 1	C- 480

Table C-1 Page 4 of 5

COMPONENT ID	DESCRIPTION	Anchorage Verification Confirmed?	AWC	COMMENTS	PAGE
1VY02C	HPCS PUMP ROOM COOLER VENT FAN	Y	2-02	SWEL 1	C- 486
1VY03C	ASSY_-_FAN, RHR PUMP B/C ROOM COOLING FAN	Y	3-17	SWEL 1	C- 490
1VY04C	ASSY_-_FAN, LPCS PUMP ROOM COOLING	Y	4-15	SWEL 1	C- 495
1VY05C	ASSY - FAN, RHR WS PP A-1B CUBE SUPPLY	N	4-23	SWEL 1	C- 499
1VY06C	ASSY - FAN, RHR WS PP A-1B CUBE SUPPLY	N	3-23	SWEL 1	C- 504
1WR029	DW EQUIP RBCCW SUPPLY OTBD ISOL VALVE	N/A	4-09	SWEL 1	C- 509
1WR040	DW EQUIP RBCCW RTN OTBD ISOL VALVE	N/A	4-03	SWEL 1	C- 513

Status: ☒ Y ☐ N ☐ U

**Seismic Walkdown Checklist (SWC)**

Equipment ID No.: 0VC01CA

Equipment Class: (10) Air Handlers

Equipment Description: ASSY - FAN, CR HVAC SUPPLY 0A

Project: LaSalle 1 SWEL

Location (Bldg, Elev, Room/Area): AB, 786.00 ft, ALL

Manufacturer/Model:

**Instructions for Completing Checklist**

This checklist may be used to document the results of the Seismic Walkdown of an item of equipment on the SWEL. The space below each of the following questions may be used to record the results of judgments and findings. Additional space is provided at the end of this checklist for documenting other comments.

**Anchorage**

1. Is anchorage configuration verification required (i.e., is the item one of the 50% of SWEL items requiring such verification)? Yes
2. Is the anchorage free of bent, broken, missing or loose hardware? Yes
3. Is the anchorage free of corrosion that is more than mild surface oxidation? Yes
4. Is the anchorage free of visible cracks in the concrete near the anchors? Yes  
*Minor shrinkage cracking in grout pad judged to be acceptable.*
5. Is the anchorage configuration consistent with plant documentation? (Note: This question only applies if the item is one of the 50% for which an anchorage configuration verification is required.) Yes  
*Anchorage shown on drawings M-1560, Rev. L and M-1591, Sheet 6, Rev. K.*
6. Based on the above anchorage evaluations, is the anchorage free of potentially adverse seismic conditions? Yes

Status: ☒ Y ☐ N ☐ U

**Seismic Walkdown Checklist (SWC)**

Equipment ID No.: 0VC01CA

Equipment Class: (10) Air Handlers

Equipment Description: ASSY - FAN; CR HVAC SUPPLY 0A

**Interaction Effects**

7. Are soft targets free from impact by nearby equipment or structures? Yes
8. Are overhead equipment, distribution systems, ceiling tiles and lighting, and masonry block walls not likely to collapse onto the equipment? Yes  
*Overhead light fixtures judged to be acceptable.*
- Adjacent masonry column pilaster (Column N-14) with running bond construction judged to be acceptable.*
9. Do attached lines have adequate flexibility to avoid damage? Yes
10. Based on the above seismic interaction evaluations, is equipment free of potentially adverse seismic interaction effects? Yes

**Other Adverse Conditions**

11. Have you looked for and found no adverse seismic conditions that could adversely affect the safety functions of the equipment? Yes

**Comments**

Seismic Walkdown Team: J. Griffith & M. Wodarczyk - 9/12/2012

Evaluated by: James D. Griffith James Griffith Date: 10/25/2012  
Michael J. Wodarczyk Michael Wodarczyk 10/25/2012



Status: ☒ Y ☐ N ☐ U

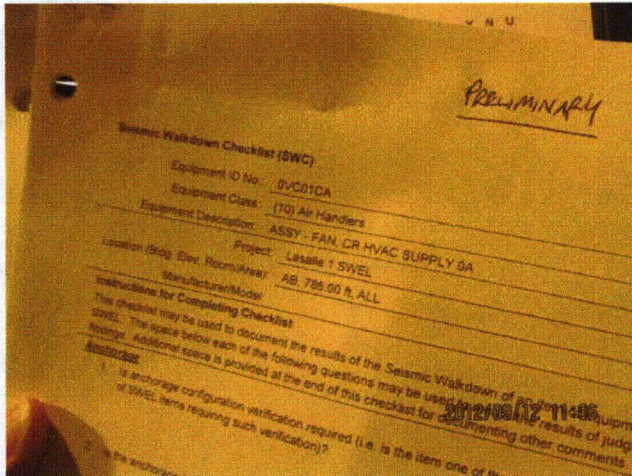
### Seismic Walkdown Checklist (SWC)

Equipment ID No.: 0VC01CA

Equipment Class: (10) Air Handlers

Equipment Description: ASSY - FAN, CR HVAC SUPPLY 0A

#### Photos



20120912-Lasalle 168



20120912-Lasalle 169



20120912-Lasalle 170



20120912-Lasalle 171



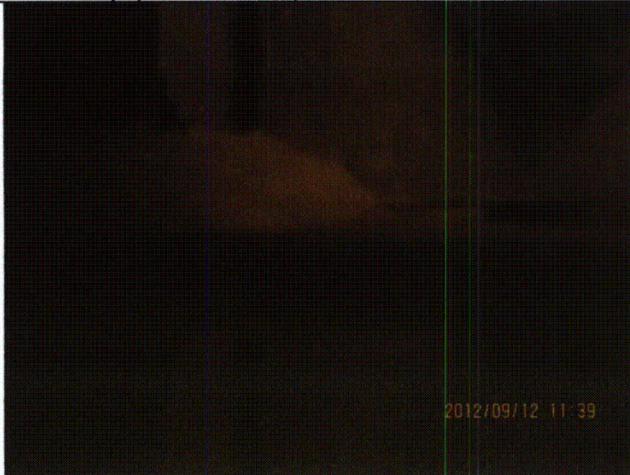
Status: ☒ Y ☐ N ☐ U

**Seismic Walkdown Checklist (SWC)**

Equipment ID No.: 0VC01CA

Equipment Class: (10) Air Handlers

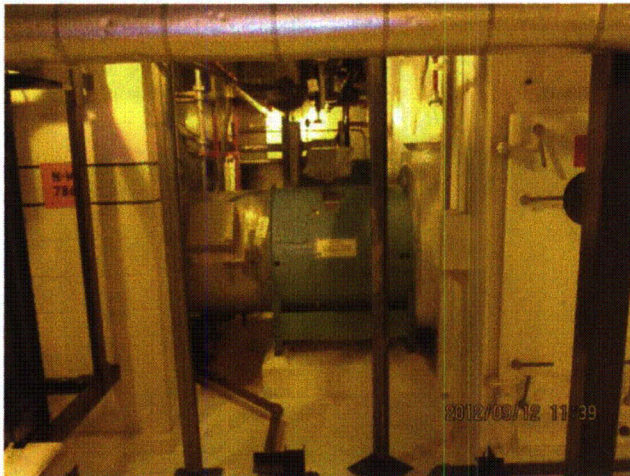
Equipment Description: ASSY - FAN, CR HVAC SUPPLY 0A



20120912-Lasalle 172



20120912-Lasalle 173



20120912-Lasalle 174



20120912-Lasalle 175



Status: ☒ Y ☐ N ☐ U

**Seismic Walkdown Checklist (SWC)**

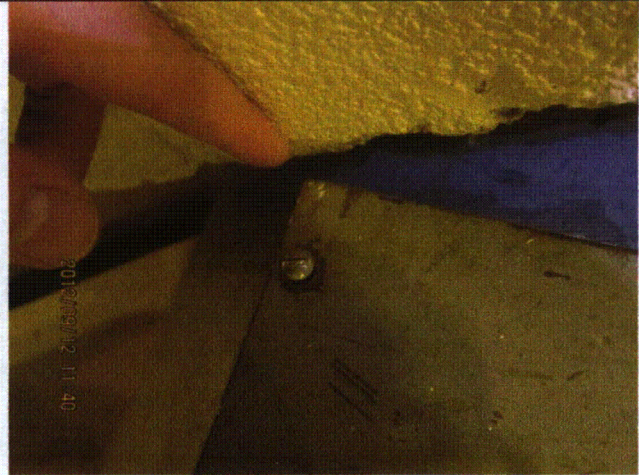
Equipment ID No.: 0VC01CA

Equipment Class: (10) Air Handlers

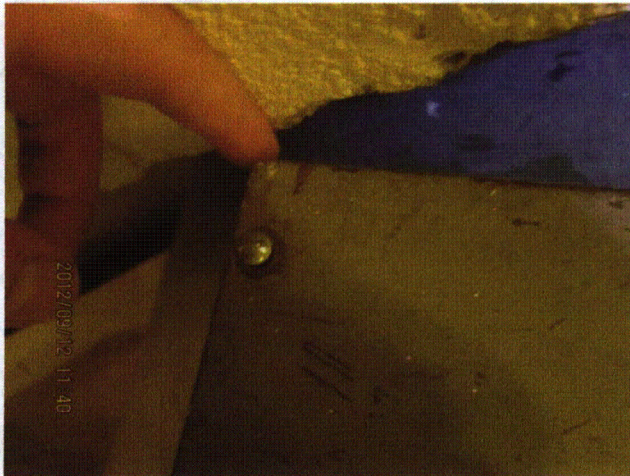
Equipment Description: ASSY - FAN, CR HVAC SUPPLY 0A



20120912-Lasalle 176



20120912-Lasalle 177



20120912-Lasalle 178



20120912-Lasalle 179



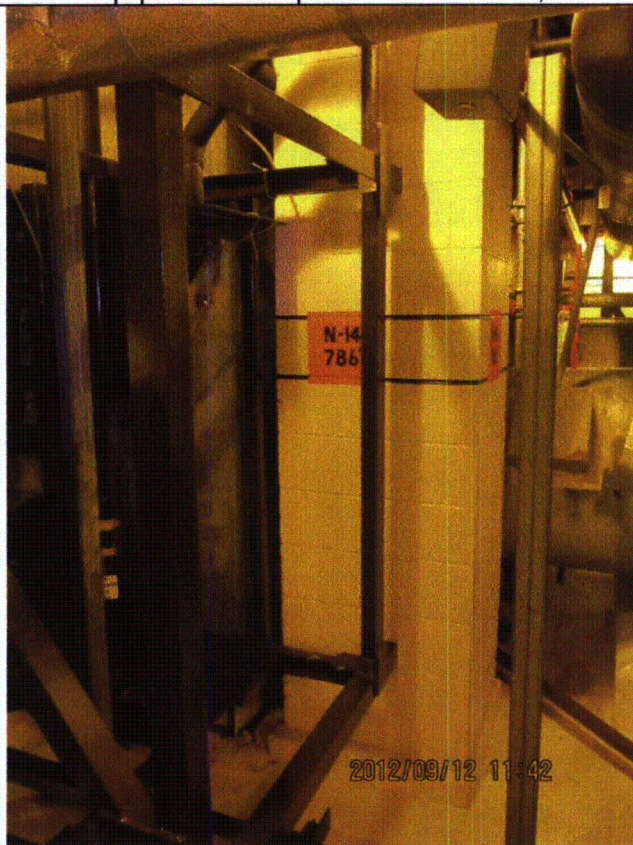
Status: ☒ Y ☐ N ☐ U

**Seismic Walkdown Checklist (SWC)**

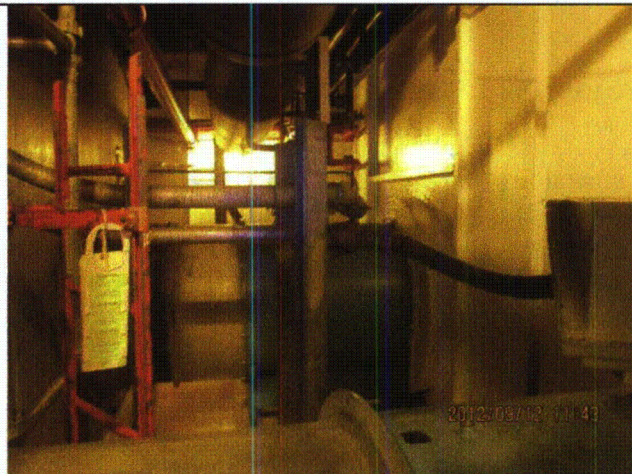
Equipment ID No.: 0VC01CA

Equipment Class: (10) Air Handlers

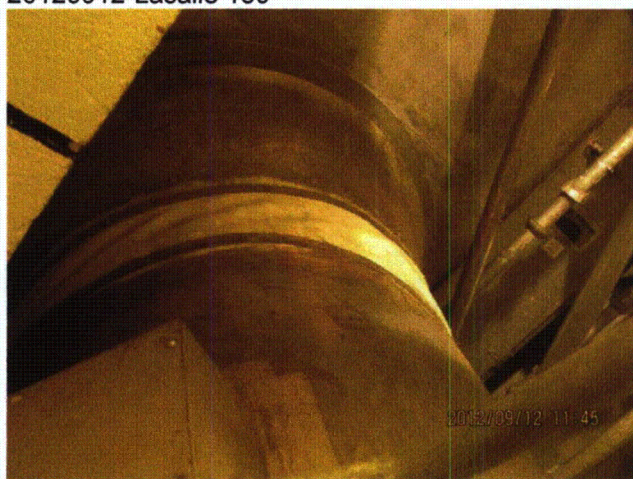
Equipment Description: ASSY - FAN, CR HVAC SUPPLY 0A



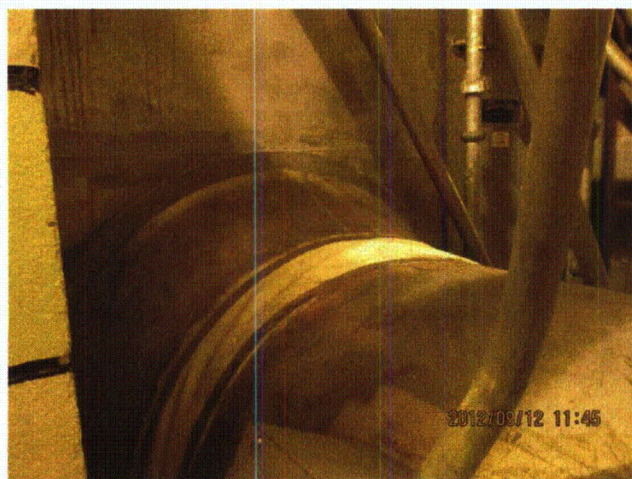
20120912-Lasalle 180



20120912-Lasalle 181



20120912-Lasalle 182



20120912-Lasalle 183

Status: ☒ Y ☐ N ☐ U

### Seismic Walkdown Checklist (SWC)

Equipment ID No.: 1AP05E

Equipment Class: (3) Medium Voltage Switchgear

Equipment Description: 4160V SWGR 142X

Project: LaSalle 1 SWEL

Location (Bldg, Elev, Room/Area): AB, 731.00 ft, ALL

Manufacturer/Model:

#### Instructions for Completing Checklist

This checklist may be used to document the results of the Seismic Walkdown of an item of equipment on the SWEL. The space below each of the following questions may be used to record the results of judgments and findings. Additional space is provided at the end of this checklist for documenting other comments.

#### Anchorage

1. Is anchorage configuration verification required (i.e., is the item one of the 50% of SWEL items requiring such verification)? No
2. Is the anchorage free of bent, broken, missing or loose hardware? Yes
3. Is the anchorage free of corrosion that is more than mild surface oxidation? Yes  
*Minor corrosion of plug welds judged to be acceptable.*
4. Is the anchorage free of visible cracks in the concrete near the anchors? Yes
5. Is the anchorage configuration consistent with plant documentation? (Note: This question only applies if the item is one of the 50% for which an anchorage configuration verification is required.) Not Applicable
6. Based on the above anchorage evaluations, is the anchorage free of potentially adverse seismic conditions? Yes  
*Viewed anchorage in 10 of 11 switchgear cubicles. Remaining anchorage in 11th cubicle could not be viewed due to Operations concerns. Anchorage viewed in the 10 cubicles was judged to be acceptable; therefore, it is reasonable to conclude that the anchorage in the 11th cubicle would also be acceptable.*



Status: ☒ Y ☐ N ☐ U

**Seismic Walkdown Checklist (SWC)**

Equipment ID No.: 1AP05E

Equipment Class: (3) Medium Voltage Switchgear

Equipment Description: 4160V SWGR 142X

**Interaction Effects**

7. Are soft targets free from impact by nearby equipment or structures? Yes

*Overhead light fixture near bus duct at back side of switchgear. Bus duct is robust; therefore, seismic interaction due to pendulum motion of light during a seismic event is not a concern.*

8. Are overhead equipment, distribution systems, ceiling tiles and lighting, and masonry block walls not likely to collapse onto the equipment? Yes

*Overhead light fixtures judged to be acceptable.*

*Adjacent masonry wall to the east of the switchgear is safety-related per drawing A-186, Rev. AR.*

9. Do attached lines have adequate flexibility to avoid damage? Yes

10. Based on the above seismic interaction evaluations, is equipment free of potentially adverse seismic interaction effects? Yes

**Other Adverse Conditions**

11. Have you looked for and found no adverse seismic conditions that could adversely affect the safety functions of the equipment? Yes

*10 of 11 switchgear cubicles were opened. 11th cubicle could not be opened due to Operations concerns. No adverse seismic conditions were observed in the 10 opened cubicles.*

**Comments**

Seismic Walkdown Team: J. Griffith & M. Wodarczyk - 9/14/2012

Evaluated by: James D. Griffith James Griffith

Date: 10/25/2012

Michael J. Wodarczyk

Michael Wodarczyk

10/25/2012

Status: ☒ Y ☐ N ☐ U

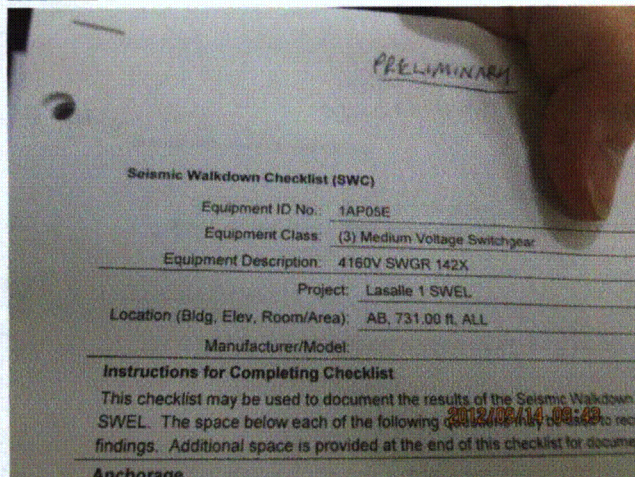
# Seismic Walkdown Checklist (SWC)

Equipment ID No.: 1AP05E

Equipment Class: (3) Medium Voltage Switchgear

Equipment Description: 4160V SWGR 142X

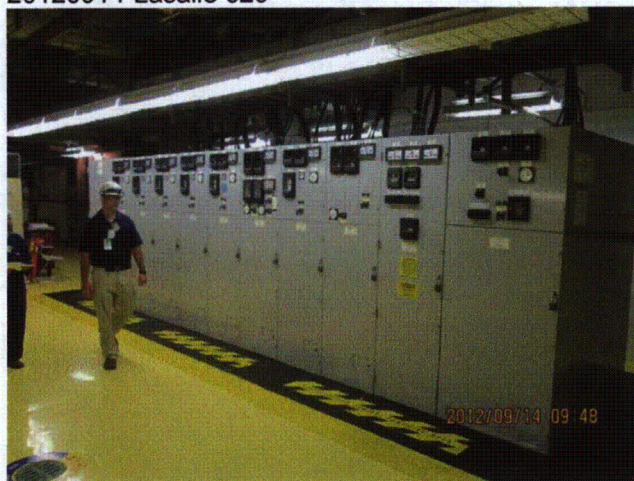
## Photos



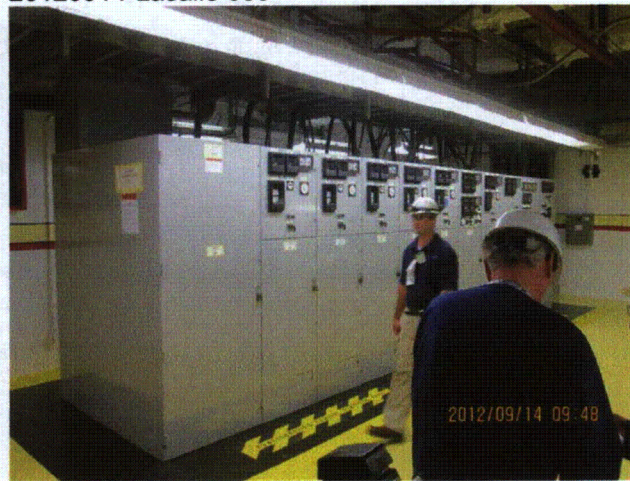
20120914-Lasalle 029



20120914-Lasalle 030



20120914-Lasalle 031



20120914-Lasalle 032



Status: ☒ Y ☐ N ☐ U

**Seismic Walkdown Checklist (SWC)**

Equipment ID No.: 1AP05E

Equipment Class: (3) Medium Voltage Switchgear

Equipment Description: 4160V SWGR 142X



20120914-Lasalle 033



20120914-Lasalle 034



Status: ☒ Y ☐ N ☐ U

**Seismic Walkdown Checklist (SWC)**

Equipment ID No.: 1AP05E

Equipment Class: (3) Medium Voltage Switchgear

Equipment Description: 4160V SWGR 142X



20120914-Lasalle 035



20120914-Lasalle 036



20120914-Lasalle 037



20120914-Lasalle 038



Status: ☒ Y ☐ N ☐ U

**Seismic Walkdown Checklist (SWC)**

Equipment ID No.: 1AP05E

Equipment Class: (3) Medium Voltage Switchgear

Equipment Description: 4160V SWGR 142X



20120914-Lasalle 039



20120914-Lasalle 040



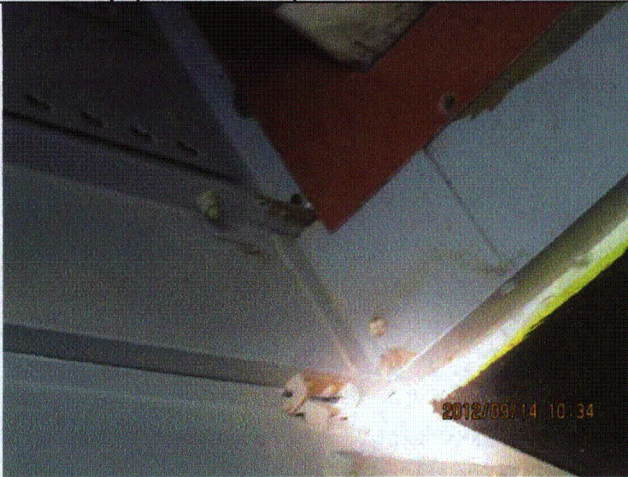
Status: ☒ Y ☐ N ☐ U

**Seismic Walkdown Checklist (SWC)**

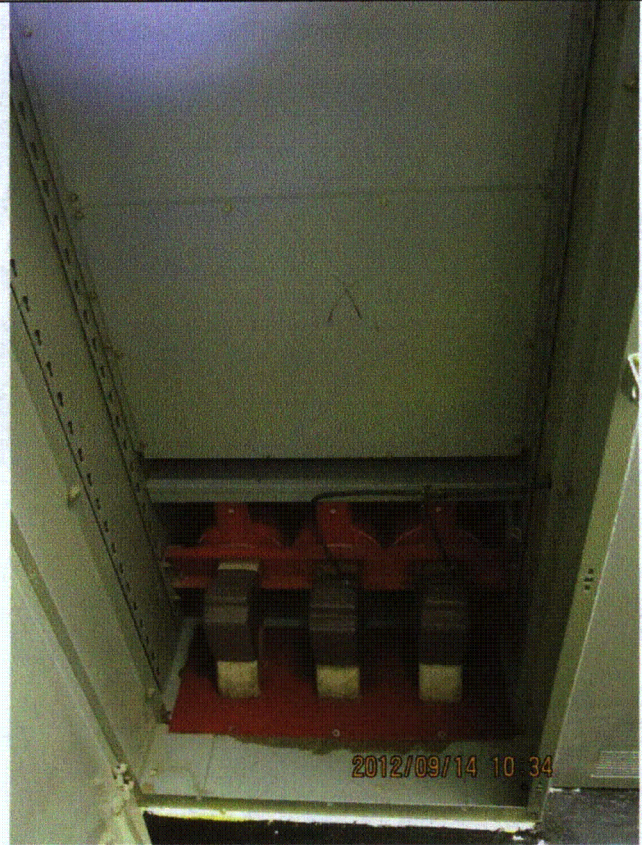
Equipment ID No.: 1AP05E

Equipment Class: (3) Medium Voltage Switchgear

Equipment Description: 4160V SWGR 142X



20120914-Lasalle 041



20120914-Lasalle 042



Status: ☒ Y ☐ N ☐ U

**Seismic Walkdown Checklist (SWC)**

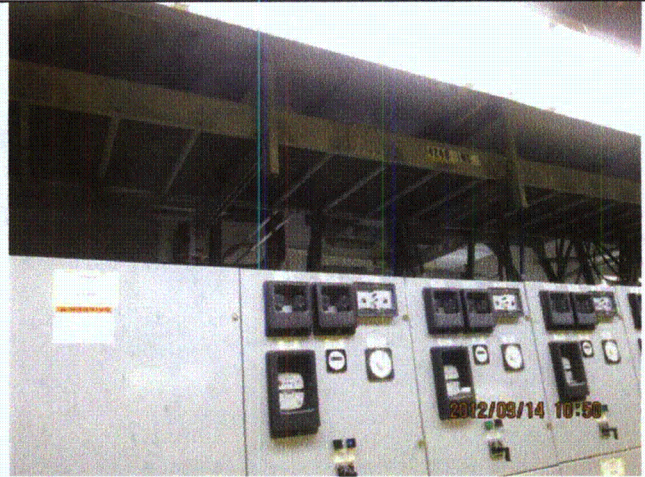
Equipment ID No.: 1AP05E

Equipment Class: (3) Medium Voltage Switchgear

Equipment Description: 4160V SWGR 142X



20120914-Lasalle 043



20120914-Lasalle 044



20120914-Lasalle 045



20120914-Lasalle 046



Status: ☒ Y ☐ N ☐ U

**Seismic Walkdown Checklist (SWC)**

Equipment ID No.: 1AP05E

Equipment Class: (3) Medium Voltage Switchgear

Equipment Description: 4160V SWGR 142X



20120914-Lasalle 047



20120914-Lasalle 048



20120914-Lasalle 049



20120914-Lasalle 050



Status: ☒ Y ☐ N ☐ U

**Seismic Walkdown Checklist (SWC)**

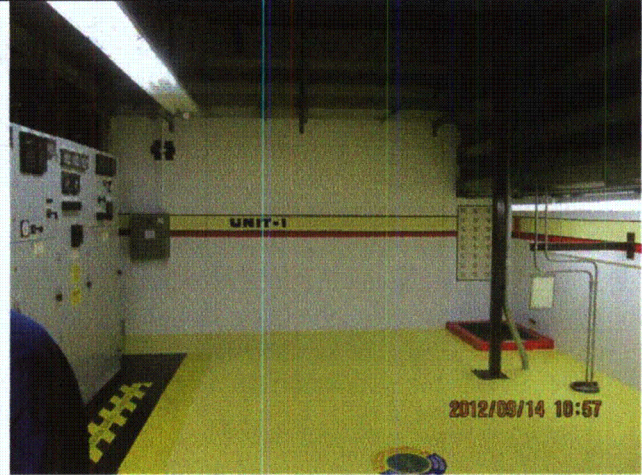
Equipment ID No.: 1AP05E

Equipment Class: (3) Medium Voltage Switchgear

Equipment Description: 4160V SWGR 142X



20120914-Lasalle 051



20120914-Lasalle 052

Status: ☒ Y ☐ N ☐ U

### Seismic Walkdown Checklist (SWC)

Equipment ID No.: 1AP06E-9

Equipment Class: (4) Transformers

Equipment Description: TRANSFORMER, 136X

Project: LaSalle 1 SWEL

Location (Bldg, Elev, Room/Area): AB, 731.00 ft, ALL

Manufacturer/Model:

#### Instructions for Completing Checklist

This checklist may be used to document the results of the Seismic Walkdown of an item of equipment on the SWEL. The space below each of the following questions may be used to record the results of judgments and findings. Additional space is provided at the end of this checklist for documenting other comments.

#### Anchorage

1. Is anchorage configuration verification required (i.e., is the item one of the 50% of SWEL items requiring such verification)? Yes
2. Is the anchorage free of bent, broken, missing or loose hardware? Yes  
*Minor lack of thread engagement at 3 of 4 anchors judged to be acceptable.*  
*Transformer sits on base concrete pad. Small gap (approx. 1/2") between base of each anchor trunnion for transformer and top of concrete pad judged to be acceptable.*
3. Is the anchorage free of corrosion that is more than mild surface oxidation? Yes
4. Is the anchorage free of visible cracks in the concrete near the anchors? Yes
5. Is the anchorage configuration consistent with plant documentation? (Note: This question only applies if the item is one of the 50% for which an anchorage configuration verification is required.) Yes  
*Anchorage shown on drawing A-186, Rev. AR.*
6. Based on the above anchorage evaluations, is the anchorage free of potentially adverse seismic conditions? Yes

Status: ☒ Y ☐ N ☐ U

**Seismic Walkdown Checklist (SWC)**

Equipment ID No.: 1AP06E-9

Equipment Class: (4) Transformers

Equipment Description: TRANSFORMER, 136X

**Interaction Effects**

7. Are soft targets free from impact by nearby equipment or structures? Yes

*Transformer bolted to adjacent switchgear.*

8. Are overhead equipment, distribution systems, ceiling tiles and lighting, and masonry block walls not likely to collapse onto the equipment? Yes

*Overhead light fixture restrained against movement into transformer by horizontal chains.*

*Adjacent masonry column pilaster (column L-10) with running bond construction judged to be acceptable.*

9. Do attached lines have adequate flexibility to avoid damage? Yes

10. Based on the above seismic interaction evaluations, is equipment free of potentially adverse seismic interaction effects? Yes

**Other Adverse Conditions**

11. Have you looked for and found no adverse seismic conditions that could adversely affect the safety functions of the equipment? Yes

**Comments**

Seismic Walkdown Team: J. Griffith & M. Wodarczyk - 9/13/2012

Evaluated by:

*James D. Griffith*

James Griffith

Date: 10/17/2012

*Michael J. Wodarczyk*

Michael Wodarczyk

10/17/2012



Status: ☒ Y ☐ N ☐ U

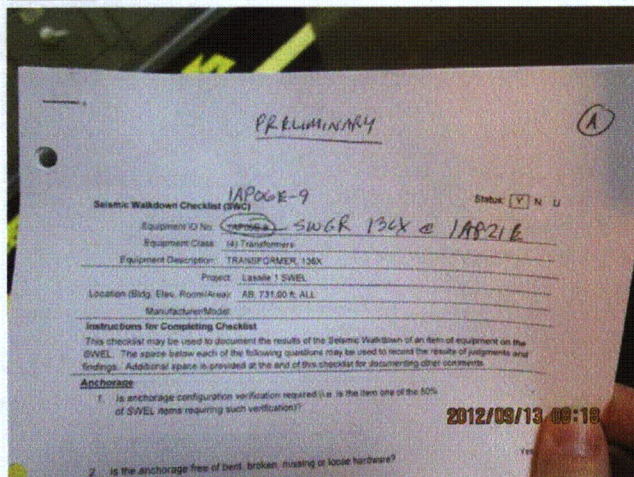
## Seismic Walkdown Checklist (SWC)

Equipment ID No.: 1AP06E-9

Equipment Class: (4) Transformers

Equipment Description: TRANSFORMER, 136X

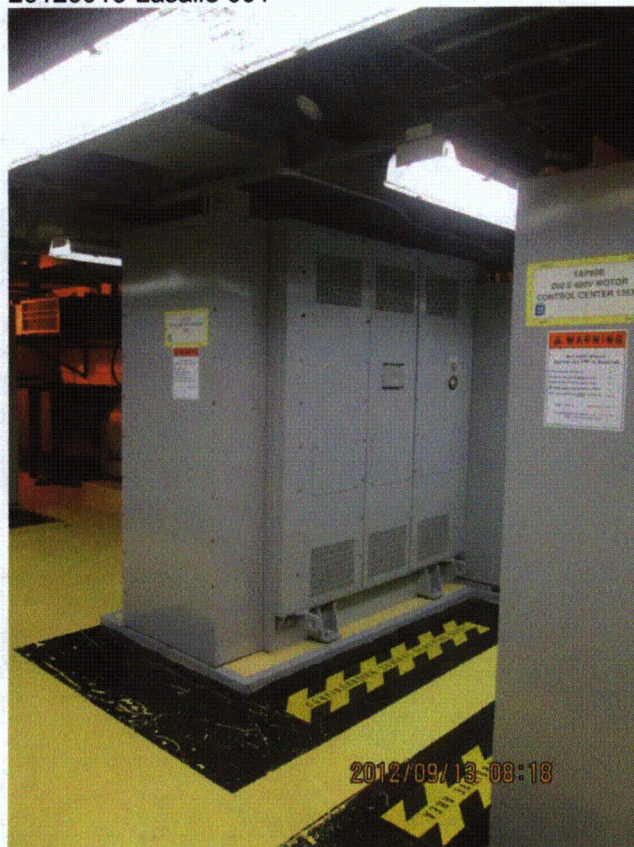
### Photos



20120913-Lasalle 001



20120913-Lasalle 002



20120913-Lasalle 003



20120913-Lasalle 004



Status: ☒ Y ☐ N ☐ U

**Seismic Walkdown Checklist (SWC)**

Equipment ID No.: 1AP06E-9

Equipment Class: (4) Transformers

Equipment Description: TRANSFORMER, 136X



20120913-Lasalle 005



20120913-Lasalle 006



20120913-Lasalle 007



20120913-Lasalle 008



Status: ☒ Y ☐ N ☐ U

**Seismic Walkdown Checklist (SWC)**

Equipment ID No.: 1AP06E-9

Equipment Class: (4) Transformers

Equipment Description: TRANSFORMER, 136X



20120913-Lasalle 009



20120913-Lasalle 010



20120913-Lasalle 011



20120913-Lasalle 012



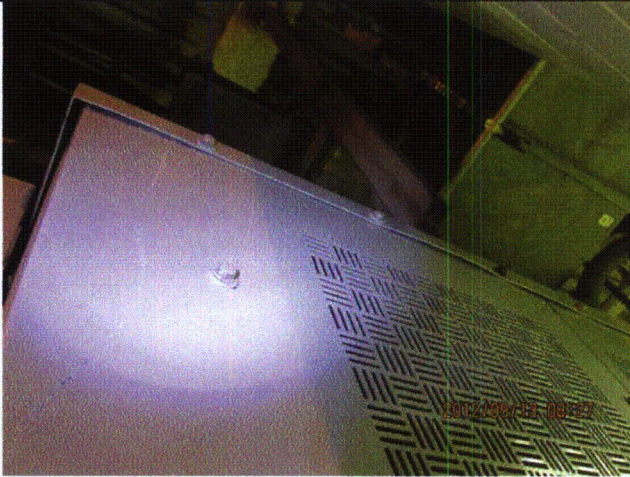
Status: ☒ Y ☐ N ☐ U

**Seismic Walkdown Checklist (SWC)**

Equipment ID No.: 1AP06E-9

Equipment Class: (4) Transformers

Equipment Description: TRANSFORMER, 136X



20120913-Lasalle 013

Status: ☒ Y ☐ N ☐ U

**Seismic Walkdown Checklist (SWC)**

Equipment ID No.: 1AP15E

Equipment Class: (2) Low Voltage Switchgear

Equipment Description: 480V SWGR 133

Project: LaSalle 1 SWEL

Location (Bldg, Elev, Room/Area): RB, 786.00 ft, ALL

Manufacturer/Model:

**Instructions for Completing Checklist**

This checklist may be used to document the results of the Seismic Walkdown of an item of equipment on the SWEL. The space below each of the following questions may be used to record the results of judgments and findings. Additional space is provided at the end of this checklist for documenting other comments.

**Anchorage**

1. Is anchorage configuration verification required (i.e., is the item one of the 50% of SWEL items requiring such verification)? No  
*Stitch weld on front and rear of cabinets judged to be acceptable.*
2. Is the anchorage free of bent, broken, missing or loose hardware? Yes
3. Is the anchorage free of corrosion that is more than mild surface oxidation? Yes
4. Is the anchorage free of visible cracks in the concrete near the anchors? Yes
5. Is the anchorage configuration consistent with plant documentation? (Note: This question only applies if the item is one of the 50% for which an anchorage configuration verification is required.) Not Applicable
6. Based on the above anchorage evaluations, is the anchorage free of potentially adverse seismic conditions? Yes

Status: ☒ Y ☐ N ☐ U

**Seismic Walkdown Checklist (SWC)**

Equipment ID No.: 1AP15E

Equipment Class: (2) Low Voltage Switchgear

Equipment Description: 480V SWGR 133

**Interaction Effects**

7. Are soft targets free from impact by nearby equipment or structures? Yes

*Switchgear and transformer are connected at the top via tack weld and bolted angle. The switchgear and transformer are also stiff in their long dimensions, therefore interaction of the two items between the top connections and base during a seismic event is judged not to be credible.*

8. Are overhead equipment, distribution systems, ceiling tiles and lighting, and masonry block walls not likely to collapse onto the equipment? Yes

*Overhead light fixture rigidly mounted and judged to be acceptable*

*Masonry wall adequately restrained; is also short, L-shaped, and with a running bond. Judged to be acceptable.*

9. Do attached lines have adequate flexibility to avoid damage? Yes

10. Based on the above seismic interaction evaluations, is equipment free of potentially adverse seismic interaction effects? Yes

**Other Adverse Conditions**

11. Have you looked for and found no adverse seismic conditions that could adversely affect the safety functions of the equipment? Yes

**Comments**

Seismic Walkdown Team: M. Etre & M. Wodarczyk - 9/17/2012

Evaluated by:



Mark Etre

Date: 10/17/2012



Michael Wodarczyk

10/17/2012



Status: ☒ Y ☐ N ☐ U

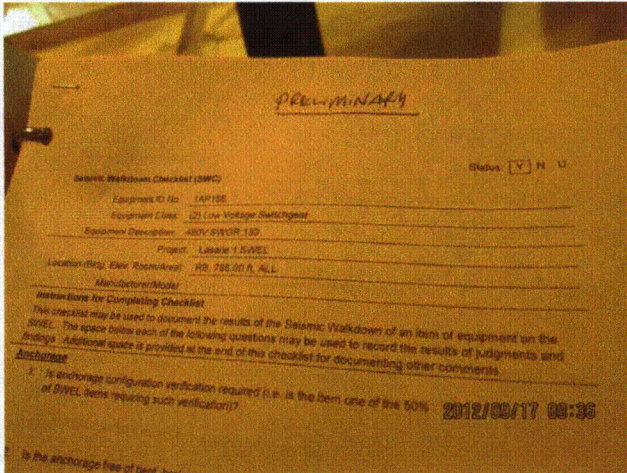
### Seismic Walkdown Checklist (SWC)

Equipment ID No.: 1AP15E

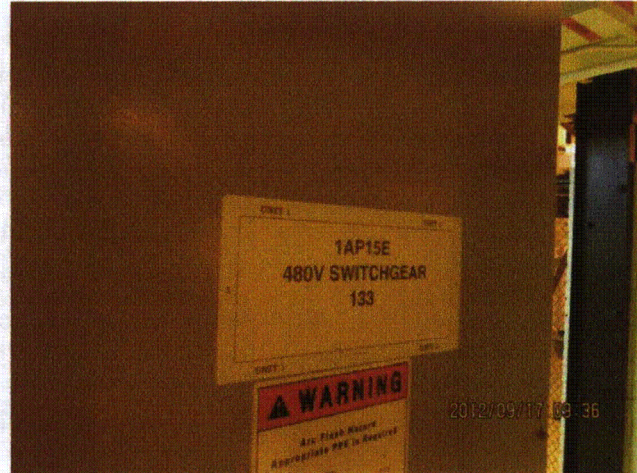
Equipment Class: (2) Low Voltage Switchgear

Equipment Description: 480V SWGR 133

#### Photos



20120917-Lasalle 069



20120917-Lasalle 070



20120917-Lasalle 071



20120917-Lasalle 072



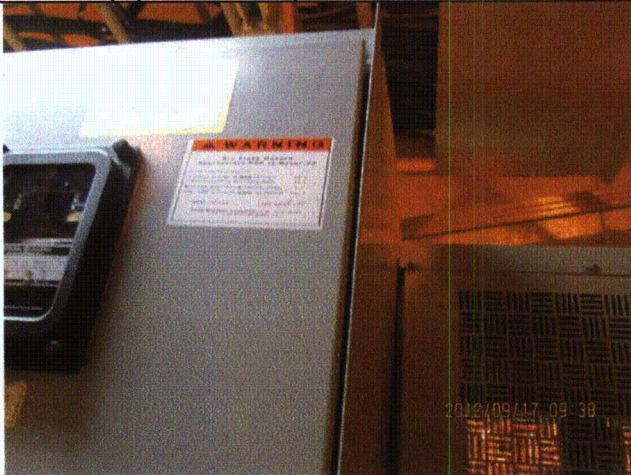
Status: ☒ Y ☐ N ☐ U

**Seismic Walkdown Checklist (SWC)**

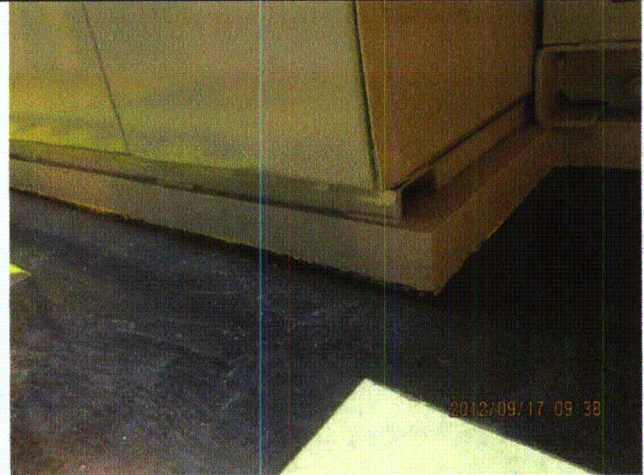
Equipment ID No.: 1AP15E

Equipment Class: (2) Low Voltage Switchgear

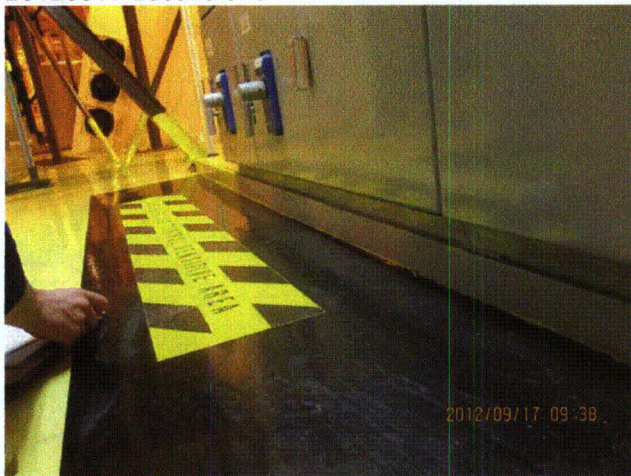
Equipment Description: 480V SWGR 133



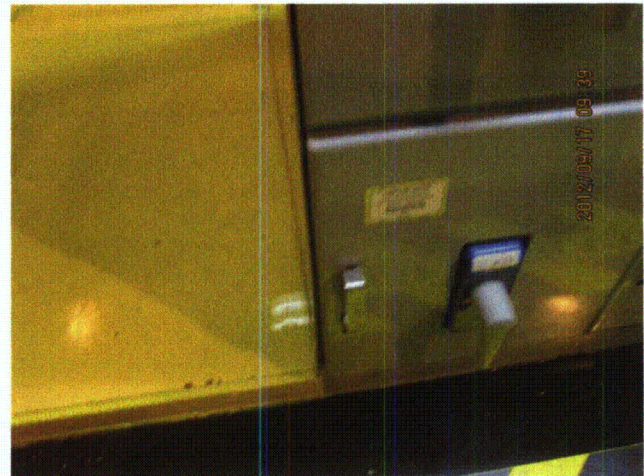
20120917-Lasalle 073



20120917-Lasalle 074



20120917-Lasalle 075



20120917-Lasalle 076



Status: ☒ Y ☐ N ☐ U

**Seismic Walkdown Checklist (SWC)**

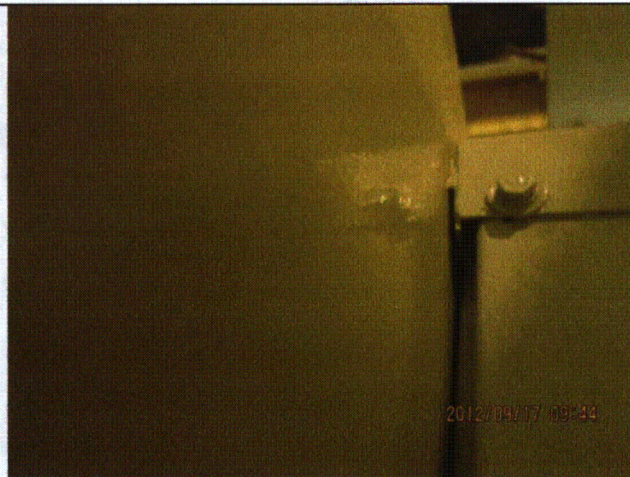
Equipment ID No.: 1AP15E

Equipment Class: (2) Low Voltage Switchgear

Equipment Description: 480V SWGR 133



20120917-Lasalle 077



20120917-Lasalle 078



20120917-Lasalle 079



20120917-Lasalle 080



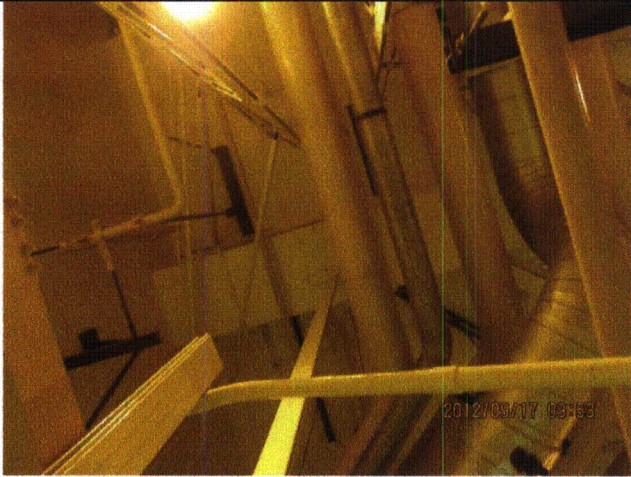
Status: ☒ Y ☐ N ☐ U

**Seismic Walkdown Checklist (SWC)**

Equipment ID No.: 1AP15E

Equipment Class: (2) Low Voltage Switchgear

Equipment Description: 480V SWGR 133



20120917-Lasalle 081

Status: ☒ Y ☐ N ☐ U

### Seismic Walkdown Checklist (SWC)

Equipment ID No.: 1AP19E

Equipment Class: (2) Low Voltage Switchgear

Equipment Description: DIV I 480V SWGR 135X

Project: LaSalle 1 SWEL

Location (Bldg, Elev, Room/Area): AB, 710.00 ft, ALL

Manufacturer/Model:

#### Instructions for Completing Checklist

This checklist may be used to document the results of the Seismic Walkdown of an item of equipment on the SWEL. The space below each of the following questions may be used to record the results of judgments and findings. Additional space is provided at the end of this checklist for documenting other comments.

#### Anchorage

1. Is anchorage configuration verification required (i.e., is the item one of the 50% of SWEL items requiring such verification)? Yes
2. Is the anchorage free of bent, broken, missing or loose hardware? Yes
3. Is the anchorage free of corrosion that is more than mild surface oxidation? Yes
4. Is the anchorage free of visible cracks in the concrete near the anchors? Yes
5. Is the anchorage configuration consistent with plant documentation? (Note: This question only applies if the item is one of the 50% for which an anchorage configuration verification is required.) Yes  
*Anchorage shown on:*  
*Drawing 1E-1-3434, Sheet 1, Rev. BG*  
*Drawing 1E-0-3070, Rev. AA*  
*Specification T-3765 (S&L Standard LS-EF-248, revised 1/5/1987).*
6. Based on the above anchorage evaluations, is the anchorage free of potentially adverse seismic conditions? Yes



Status: ☒ Y ☐ N ☐ U

**Seismic Walkdown Checklist (SWC)**

Equipment ID No.: 1AP19E

Equipment Class: (2) Low Voltage Switchgear

Equipment Description: DIV I 480V SWGR 135X

**Interaction Effects**

7. Are soft targets free from impact by nearby equipment or structures? Yes

*Breaker and transformer are bolted together.*

8. Are overhead equipment, distribution systems, ceiling tiles and lighting, and masonry block walls not likely to collapse onto the equipment? Yes

*Adjacent masonry column pilaster (column L-10) with running bond construction judged to be acceptable.*

*2 points on chain-hung light fixture with open S-hooks:*

*1) 1 of 2 chains with open S-hook. Other chain's S-hook is closed. Fixture cannot fall from this chain point.*

*2) 1 short chain with open S-hook. Fixture has chain supports nearby on both sides of this particular chain point.*

*Light fixture is judged to be acceptable.*

9. Do attached lines have adequate flexibility to avoid damage? Yes

10. Based on the above seismic interaction evaluations, is equipment free of potentially adverse seismic interaction effects? Yes

**Other Adverse Conditions**

11. Have you looked for and found no adverse seismic conditions that could adversely affect the safety functions of the equipment? Yes

**Comments**

Seismic Walkdown Team: M. Etre & M. Wodarczyk - 9/18/2012

One latched cabinet at front of switchgear was opened. Other cabinets bolted.

Status: ☒ Y ☐ N ☐ U

### Seismic Walkdown Checklist (SWC)

Equipment ID No.: 1AP19E

Equipment Class: (2) Low Voltage Switchgear

Equipment Description: DIV I 480V SWGR 135X

Evaluated by:

*Mark S. Etre*

Mark Etre

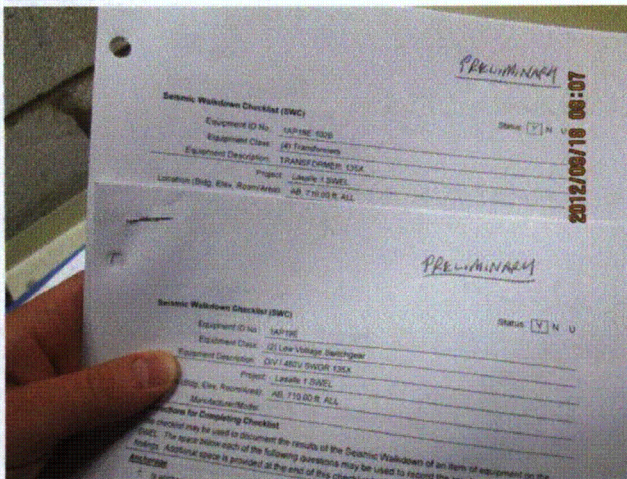
Date: 10/17/2012

*Michael J. Wodarczyk*

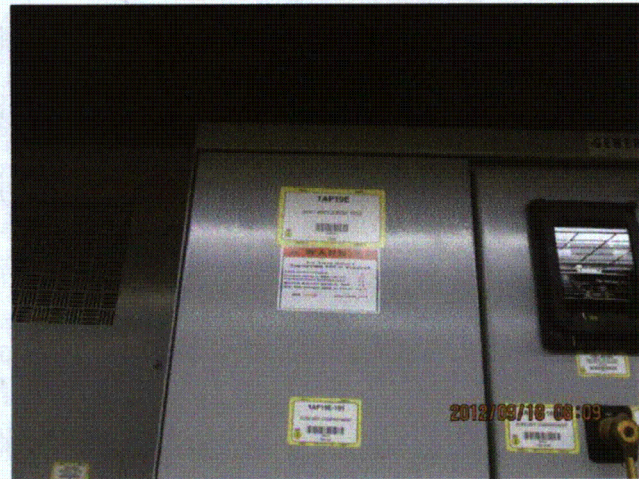
Michael Wodarczyk

10/17/2012

### Photos



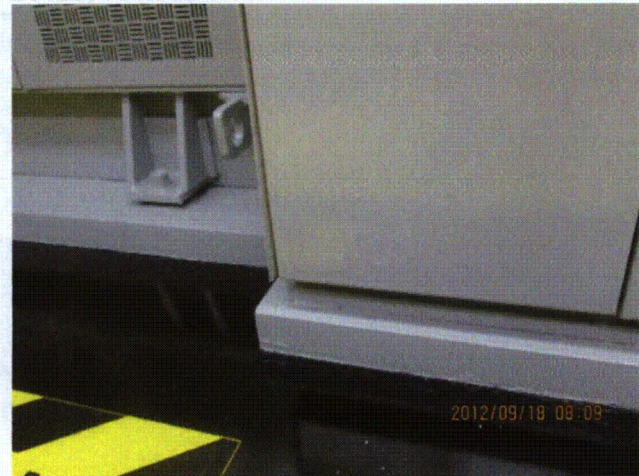
20120918-Lasalle 001



20120918-Lasalle 002



20120918-Lasalle 003



20120918-Lasalle 004



Status: ☒ Y ☐ N ☐ U

**Seismic Walkdown Checklist (SWC)**

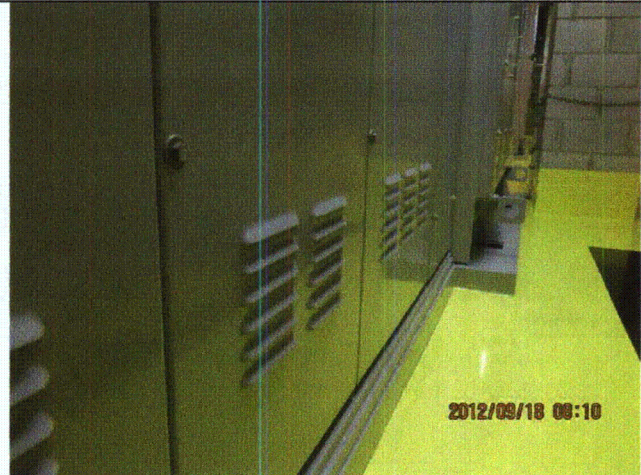
Equipment ID No.: 1AP19E

Equipment Class: (2) Low Voltage Switchgear

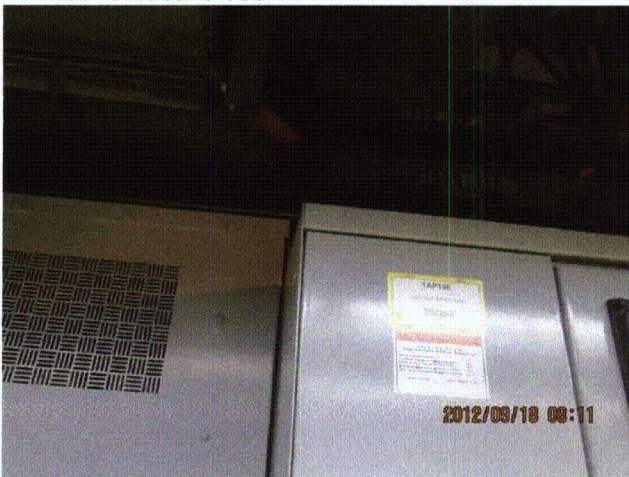
Equipment Description: DIV I 480V SWGR 135X



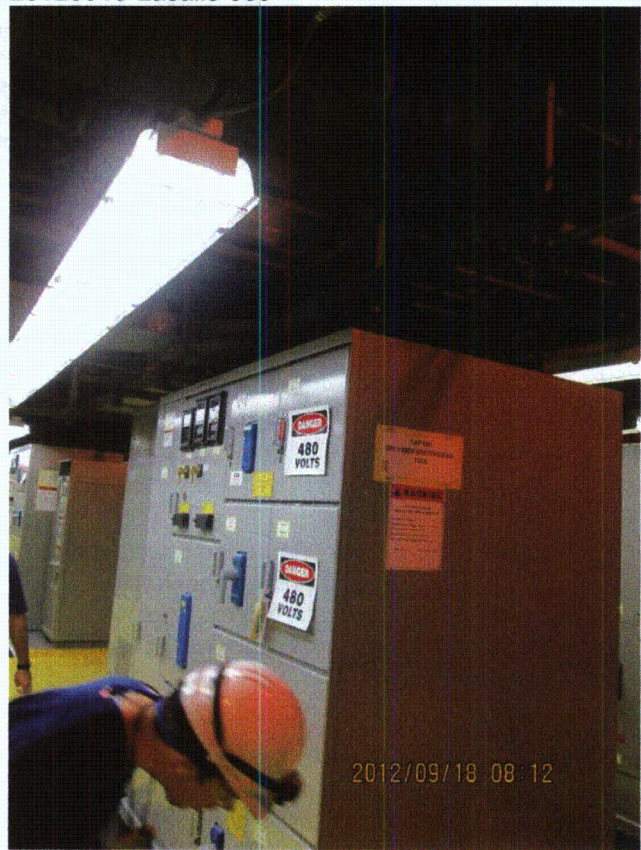
20120918-Lasalle 005



20120918-Lasalle 006



20120918-Lasalle 007



20120918-Lasalle 008



Status: ☒ Y ☐ N ☐ U

**Seismic Walkdown Checklist (SWC)**

Equipment ID No.: 1AP19E-102B

Equipment Class: (4) Transformers

Equipment Description: TRANSFORMER, 135X

Project: LaSalle 1 SWEL

Location (Bldg, Elev, Room/Area): AB, 710.00 ft, ALL

Manufacturer/Model:

**Instructions for Completing Checklist**

This checklist may be used to document the results of the Seismic Walkdown of an item of equipment on the SWEL. The space below each of the following questions may be used to record the results of judgments and findings. Additional space is provided at the end of this checklist for documenting other comments.

**Anchorage**

1. Is anchorage configuration verification required (i.e., is the item one of the 50% of SWEL items requiring such verification)? Yes
2. Is the anchorage free of bent, broken, missing or loose hardware? Yes  
*Minor lack of thread engagement judged to be acceptable.*
3. Is the anchorage free of corrosion that is more than mild surface oxidation? Yes
4. Is the anchorage free of visible cracks in the concrete near the anchors? Yes
5. Is the anchorage configuration consistent with plant documentation? (Note: This question only applies if the item is one of the 50% for which an anchorage configuration verification is required.) Yes  
*Anchorage shown on drawings 1E-1-3434, Sheet 1, Rev. BG and drawing 1E-0-3070, Rev. AA.*
6. Based on the above anchorage evaluations, is the anchorage free of potentially adverse seismic conditions? Yes



Status: ☒ Y ☐ N ☐ U

**Seismic Walkdown Checklist (SWC)**

Equipment ID No.: 1AP19E-102B

Equipment Class: (4) Transformers

Equipment Description: TRANSFORMER, 135X

**Interaction Effects**

7. Are soft targets free from impact by nearby equipment or structures? Yes

*Overhead chain-hung light fixture prevented from interaction with transformer by short hanging chain, conduit, and chain restraint.*

8. Are overhead equipment, distribution systems, ceiling tiles and lighting, and masonry block walls not likely to collapse onto the equipment? Yes

*Switchgear is bolted to transformer. Interaction is therefore not a concern.*  
*Adjacent masonry column pilaster (column L-10) with running bond construction judged to be acceptable.*

9. Do attached lines have adequate flexibility to avoid damage? Yes

10. Based on the above seismic interaction evaluations, is equipment free of potentially adverse seismic interaction effects? Yes

**Other Adverse Conditions**

11. Have you looked for and found no adverse seismic conditions that could adversely affect the safety functions of the equipment? Yes

**Comments**

Seismic Walkdown Team: M. Etre & M. Wodarczyk - 9/18/2012

EPN tag not present. Correct item verified by Operations and Engineering.

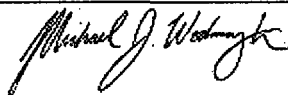
All cabinets bolted and therefore unopened by walkdown team.

Evaluated by:



Mark Etre

Date: 10/17/2012



Michael Wodarczyk

10/17/2012



Status: ☒ Y ☐ N ☐ U

**Seismic Walkdown Checklist (SWC)**

Equipment ID No.: 1AP19E-102B

Equipment Class: (4) Transformers

Equipment Description: TRANSFORMER, 135X

**Photos**



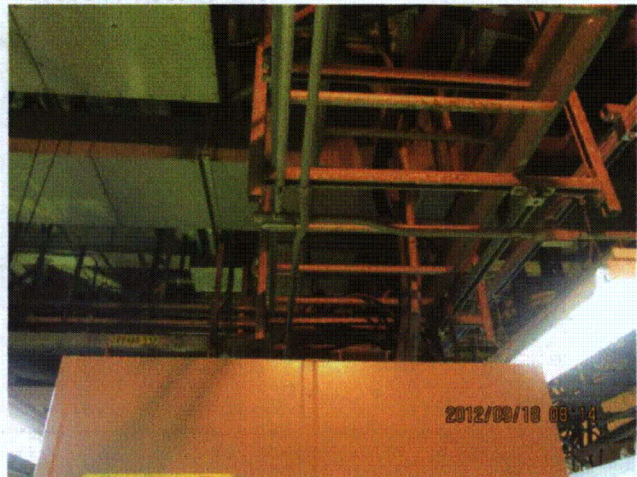
20120918-Lasalle 009



20120918-Lasalle 010



20120918-Lasalle 011



20120918-Lasalle 012



Status: ☒ Y ☐ N ☐ U

### Seismic Walkdown Checklist (SWC)

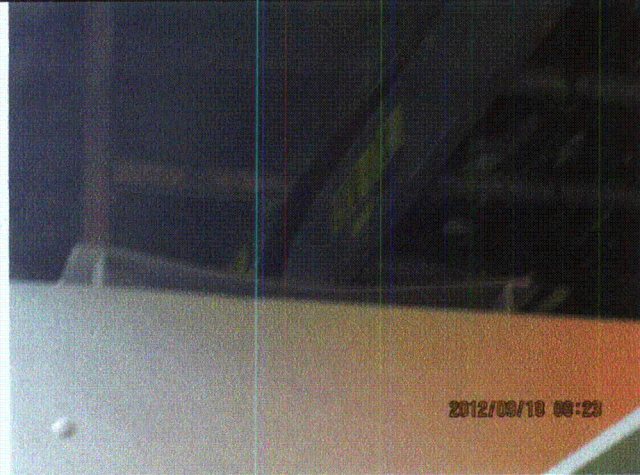
Equipment ID No.: 1AP19E-102B

Equipment Class: (4) Transformers

Equipment Description: TRANSFORMER, 135X



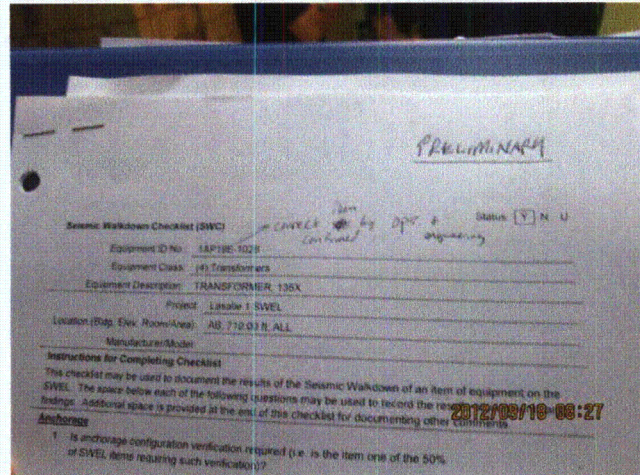
20120918-Lasalle 013



20120918-Lasalle 014



20120918-Lasalle 015



20120918-Lasalle 016



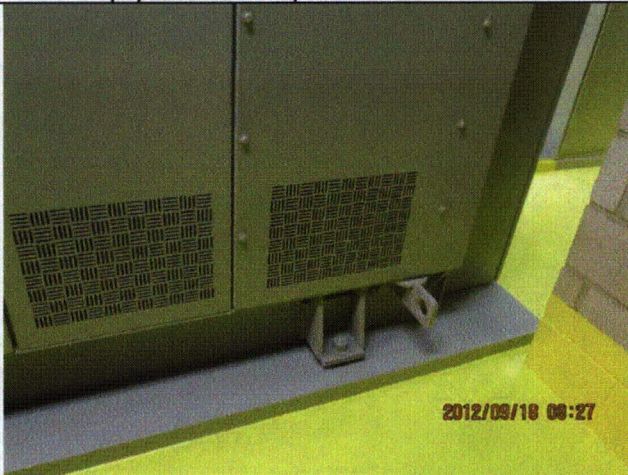
Status: ☒ Y ☐ N ☐ U

**Seismic Walkdown Checklist (SWC)**

Equipment ID No.: 1AP19E-102B

Equipment Class: (4) Transformers

Equipment Description: TRANSFORMER, 135X



20120918-Lasalle 017



20120918-Lasalle 018



20120918-Lasalle 019



20120918-Lasalle 020



Status: ☒ Y ☐ N ☐ U

**Seismic Walkdown Checklist (SWC)**

Equipment ID No.: 1AP19E-102B

Equipment Class: (4) Transformers

Equipment Description: TRANSFORMER, 135X



20120918-Lasalle 021



20120918-Lasalle 022



20120918-Lasalle 023



20120918-Lasalle 024



Status: ☒ Y ☐ N ☐ U

**Seismic Walkdown Checklist (SWC)**

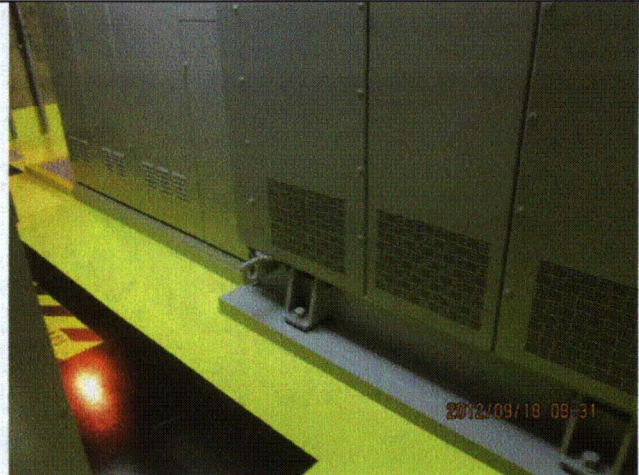
Equipment ID No.: 1AP19E-102B

Equipment Class: (4) Transformers

Equipment Description: TRANSFORMER, 135X



20120918-Lasalle 025



20120918-Lasalle 026



20120918-Lasalle 027



20120918-Lasalle 028



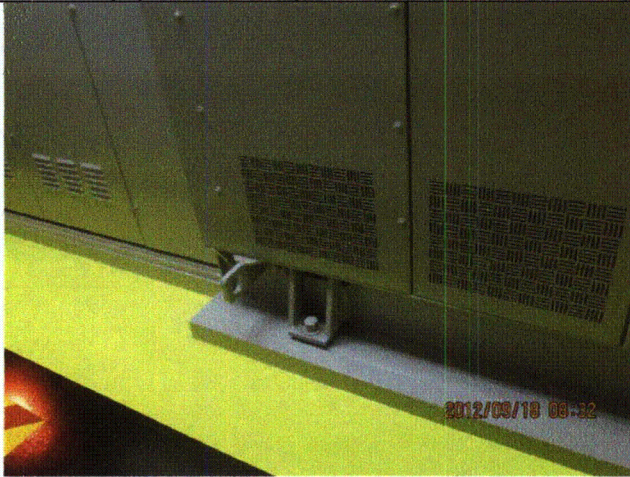
Status: ☒ Y ☐ N ☐ U

**Seismic Walkdown Checklist (SWC)**

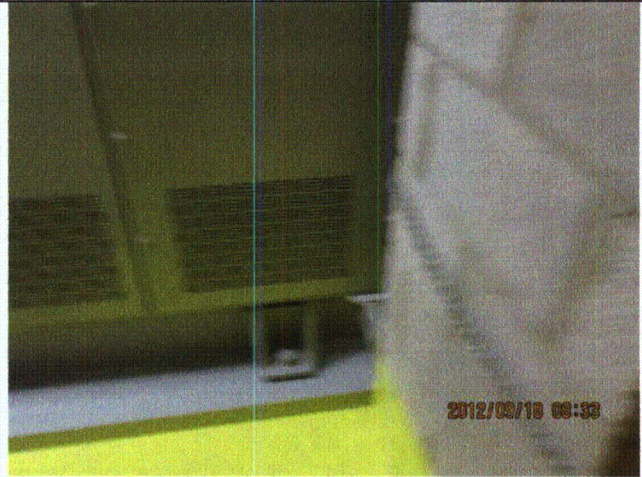
Equipment ID No.: 1AP19E-102B

Equipment Class: (4) Transformers

Equipment Description: TRANSFORMER, 135X



20120918-Lasalle 029



20120918-Lasalle 030



Status: ☒ Y ☐ N ☐ U

### Seismic Walkdown Checklist (SWC)

Equipment ID No.: 1AP21E

Equipment Class: (2) Low Voltage Switchgear

Equipment Description: DIV II 480V SWGR 136X

Project: LaSalle 1 SWEL

Location (Bldg, Elev, Room/Area): AB, 731.00 ft, ALL

Manufacturer/Model:

#### Instructions for Completing Checklist

This checklist may be used to document the results of the Seismic Walkdown of an item of equipment on the SWEL. The space below each of the following questions may be used to record the results of judgments and findings. Additional space is provided at the end of this checklist for documenting other comments.

#### Anchorage

1. Is anchorage configuration verification required (i.e., is the item one of the 50% of SWEL items requiring such verification)? Yes
  
2. Is the anchorage free of bent, broken, missing or loose hardware? Yes
  
3. Is the anchorage free of corrosion that is more than mild surface oxidation? Yes
  
4. Is the anchorage free of visible cracks in the concrete near the anchors? Yes
  
5. Is the anchorage configuration consistent with plant documentation? (Note: This question only applies if the item is one of the 50% for which an anchorage configuration verification is required.) Yes  
*Anchorage shown on:*  
*Drawing 1E-1-3444, Sheet 1, Rev. A*  
*Drawing 1E-0-3070, Rev. AA*  
*Specification T-3765 (S&L Standard LS-EF-248, revised 1/5/1987).*
6. Based on the above anchorage evaluations, is the anchorage free of potentially adverse seismic conditions? Yes



Status: ☒ Y ☐ N ☐ U

**Seismic Walkdown Checklist (SWC)**

Equipment ID No.: 1AP21E

Equipment Class: (2) Low Voltage Switchgear

Equipment Description: DIV II 480V SWGR 136X

**Interaction Effects**

7. Are soft targets free from impact by nearby equipment or structures? Yes

*Switchgear is bolted to adjacent transformer.*

8. Are overhead equipment, distribution systems, ceiling tiles and lighting, and masonry block walls not likely to collapse onto the equipment? Yes

*Overhead light fixtures judged to be acceptable.*

*Adjacent masonry wall at stairwell is safety-related per drawing A-186, Rev. AR.*

9. Do attached lines have adequate flexibility to avoid damage? Yes

10. Based on the above seismic interaction evaluations, is equipment free of potentially adverse seismic interaction effects? Yes

**Other Adverse Conditions**

11. Have you looked for and found no adverse seismic conditions that could adversely affect the safety functions of the equipment? Yes

**Comments**

Seismic Walkdown Team: J. Griffith & M. Wodarczyk - 9/12/2012

Evaluated by: James D. Griffith James Griffith

Date: 10/17/2012

Michael J. Wodarczyk

Michael Wodarczyk

10/17/2012



Status: ☒ Y ☐ N ☐ U

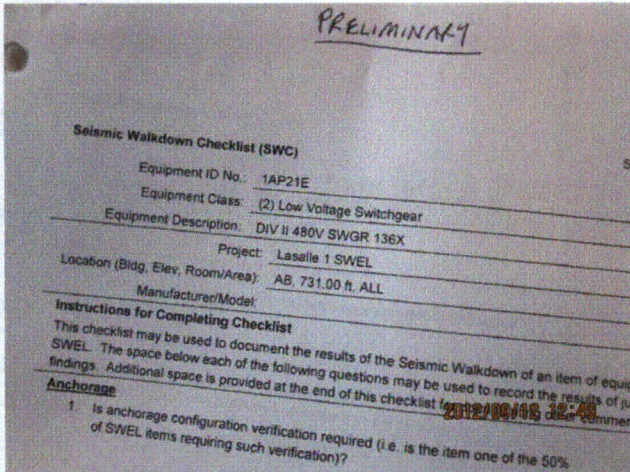
### Seismic Walkdown Checklist (SWC)

Equipment ID No.: 1AP21E

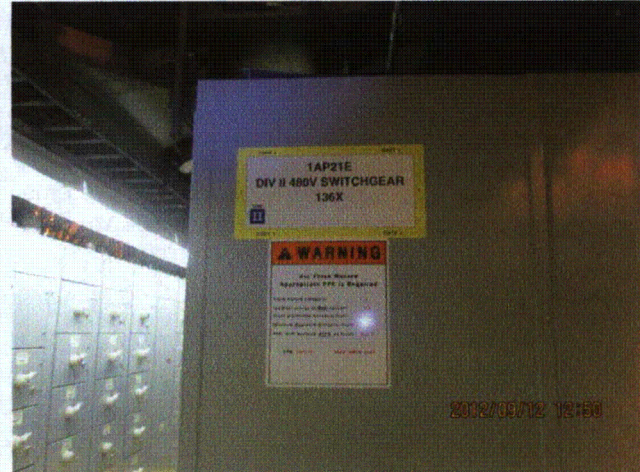
Equipment Class: (2) Low Voltage Switchgear

Equipment Description: DIV II 480V SWGR 136X

#### Photos



20120912-Lasalle 238



20120912-Lasalle 239



20120912-Lasalle 240



20120912-Lasalle 241



Status: ☒ Y ☐ N ☐ U

**Seismic Walkdown Checklist (SWC)**

Equipment ID No.: 1AP21E

Equipment Class: (2) Low Voltage Switchgear

Equipment Description: DIV II 480V SWGR 136X



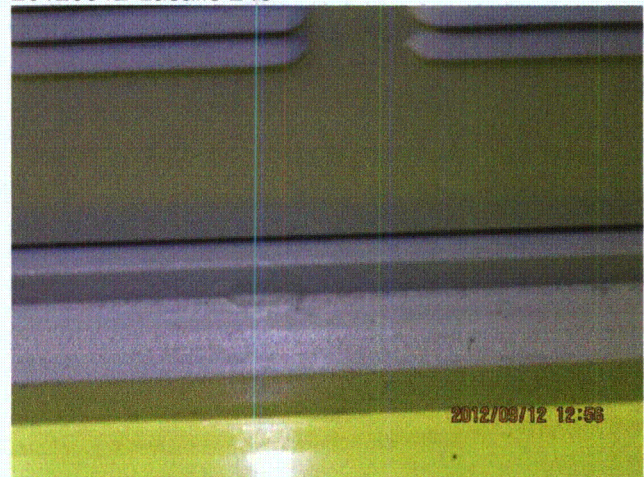
20120912-Lasalle 242



20120912-Lasalle 243



20120912-Lasalle 244



20120912-Lasalle 245



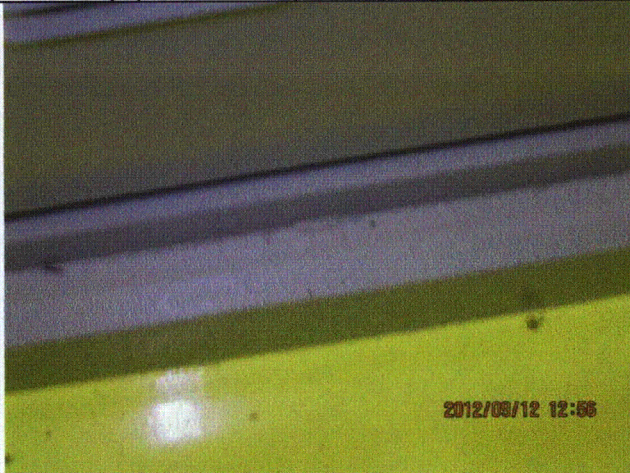
Status: ☒ Y ☐ N ☐ U

**Seismic Walkdown Checklist (SWC)**

Equipment ID No.: 1AP21E

Equipment Class: (2) Low Voltage Switchgear

Equipment Description: DIV II 480V SWGR 136X



20120912-Lasalle 246



20120912-Lasalle 247



20120912-Lasalle 248



20120912-Lasalle 249



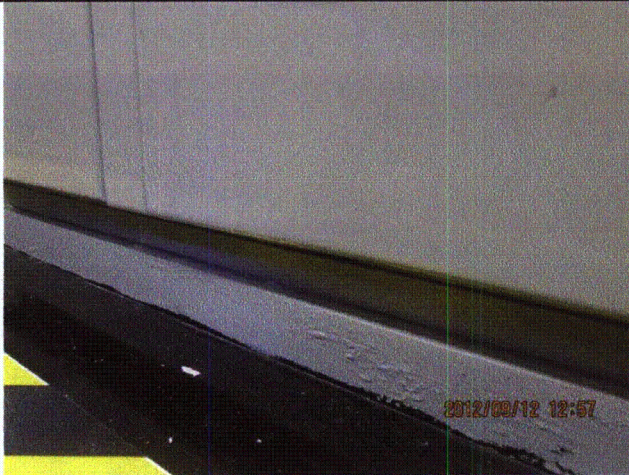
Status: ☒ Y ☐ N ☐ U

**Seismic Walkdown Checklist (SWC)**

Equipment ID No.: 1AP21E

Equipment Class: (2) Low Voltage Switchgear

Equipment Description: DIV II 480V SWGR 136X



20120912-Lasalle 250



20120912-Lasalle 251



20120912-Lasalle 252



20120912-Lasalle 253



Status: ☒ Y ☐ N ☐ U

### Seismic Walkdown Checklist (SWC)

Equipment ID No.: 1AP21E

Equipment Class: (2) Low Voltage Switchgear

Equipment Description: DIV II 480V SWGR 136X



20120912-Lasalle 254



20120912-Lasalle 255

SEISMIC WALKDOWN CHECKLIST (SWC)

Equipment ID No.: 1AP21E  
Equipment Class: (2) Low Voltage Switchgear  
Equipment Description: DIV II 480V SWGR 136X  
Project: Lasalle 1 SWEL  
Location (Bldg, Elev, Room/Area): AB 731.00 R. ALL  
Manufacturer/Model:

Instructions for Completing Checklist  
This checklist may be used to document the results of the Seismic Walkdown of an item of equipment on the SWEL. The space below each of the following questions may be used to record the results of judgments and findings. Additional space is provided at the end of this checklist for documenting other comments.

Answers:

1. Is anchorage configuration verification required (i.e. is the item one of the 50% of SWEL items requiring such verification)? 4

2. Is the anchorage free of bent, broken, missing or loose hardware? Yes

2012/09/12 16:00

20120912-Lasalle 256



20120912-Lasalle 257



Status: ☒ Y ☐ N ☐ U

**Seismic Walkdown Checklist (SWC)**

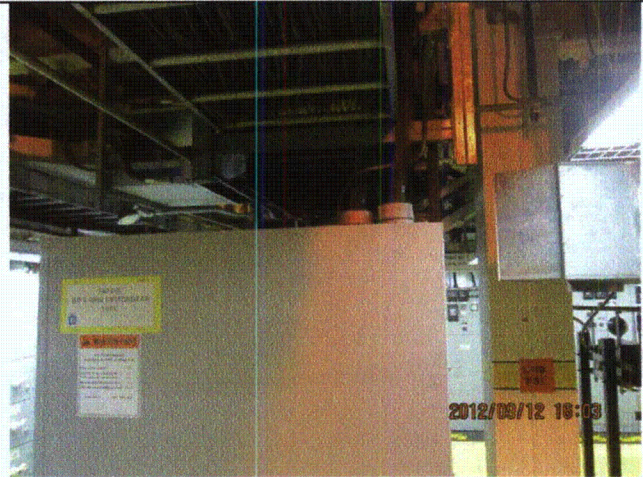
Equipment ID No.: 1AP21E

Equipment Class: (2) Low Voltage Switchgear

Equipment Description: DIV II 480V SWGR 136X



20120912-Lasalle 258



20120912-Lasalle 259



Status: ☒ Y ☐ N ☐ U

**Seismic Walkdown Checklist (SWC)**

Equipment ID No.: 1AP21E

Equipment Class: (2) Low Voltage Switchgear

Equipment Description: DIV II 480V SWGR 136X



20120912-Lasalle 260



20120912-Lasalle 261



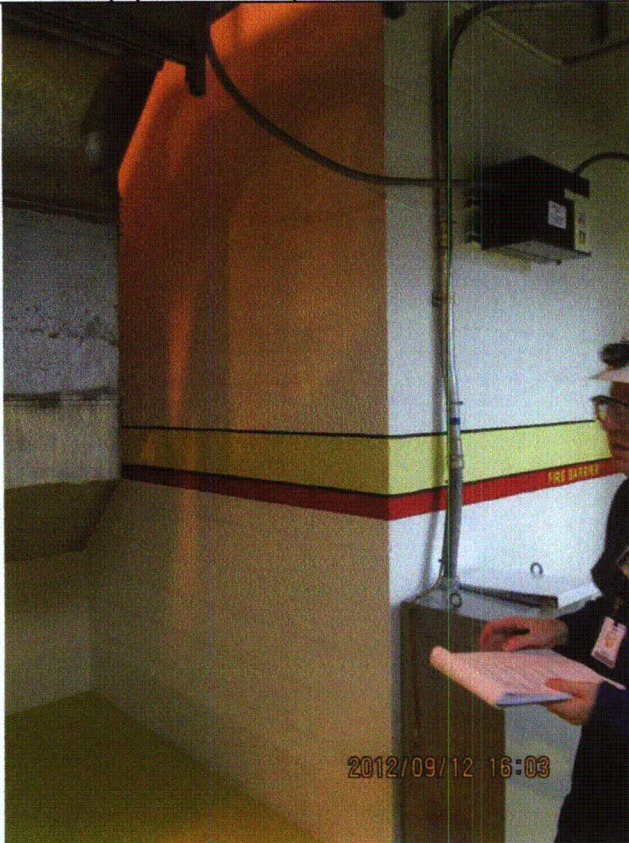
Status: ☒ Y ☐ N ☐ U

**Seismic Walkdown Checklist (SWC)**

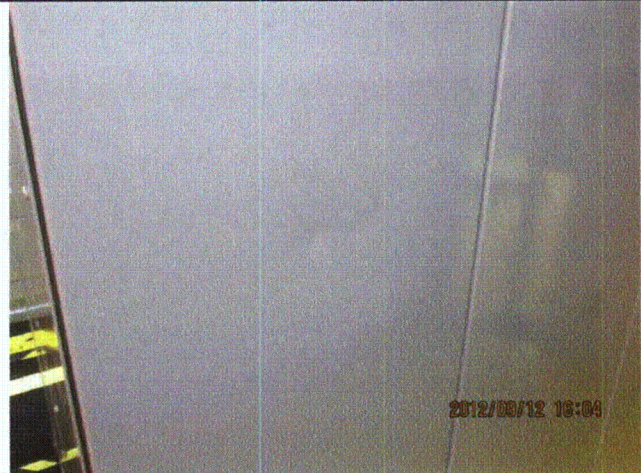
Equipment ID No.: 1AP21E

Equipment Class: (2) Low Voltage Switchgear

Equipment Description: DIV II 480V SWGR 136X



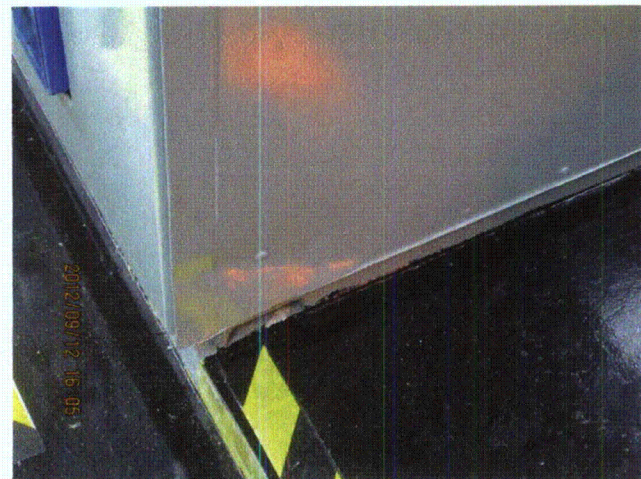
20120912-Lasalle 262



20120912-Lasalle 263



20120912-Lasalle 264



20120912-Lasalle 265



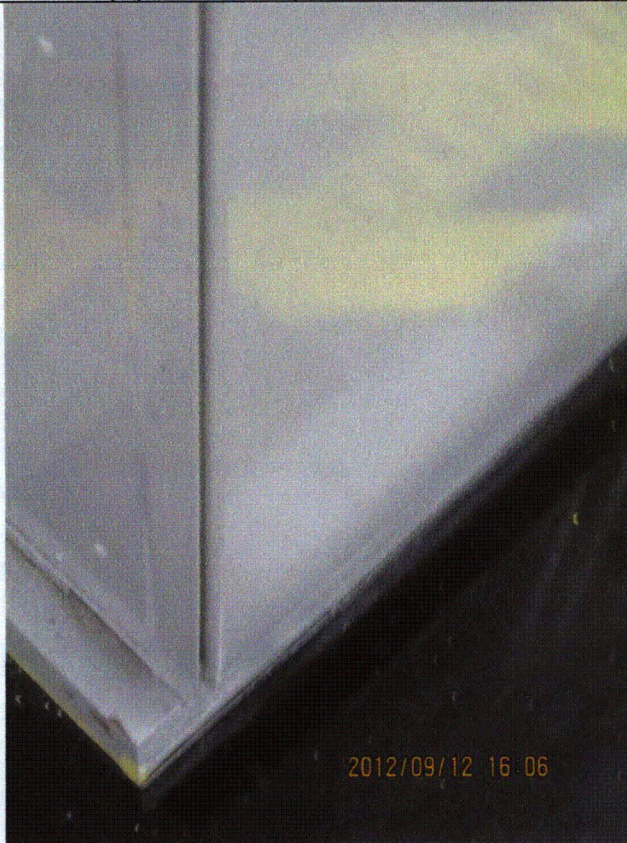
Status: ☒ Y ☐ N ☐ U

**Seismic Walkdown Checklist (SWC)**

Equipment ID No.: 1AP21E

Equipment Class: (2) Low Voltage Switchgear

Equipment Description: DIV II 480V SWGR 136X



2012/09/12 16:06

20120912-Lasalle 266



2012/09/12 16:07

20120912-Lasalle 268



20120912-Lasalle 267