

APPENDIX G

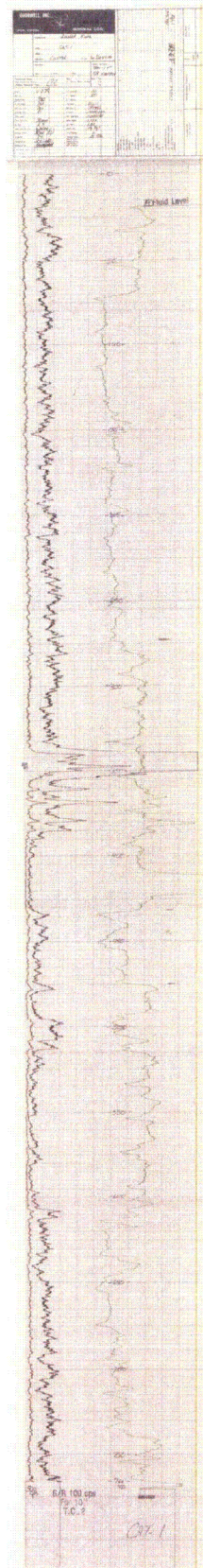
Morrison Formation Drill Hole Logs

Table of Contents

Hole No.	Easting (ft)	Northing (ft)	Elevation (ft amsl)	Page
CAT 1	1,028,330	444,666	3,738	1
DRJ 90	1,037,602	438,720	3,762	2
FBR 31	1,038,131	433,097	3,800	3
RONA 81	1,033,459	429,385	3,688	4
PM 159	1,032,551	433,100	3,651	5
DWT 48	1,025,864	444,053	3,702	6
DWT 49	1,025,235	442,634	3,661	7
ELT 14	1,017,626	444,849	3,617	8
DWT 40	1,022,610	445,875	3,681	9
DWW 190	1,032,799	450,521	3,760	10
DWW 192	1,033,149	450,479	3,740	11
DY 12	1,025,946	450,088	3,820	12
DY 17	1,027,335	455,821	3,818	13
DY 308	1,012,901	445,124	3,616	14
HDA 1	1,028,537	448,585	3,780	15
TRM 38	1,035,605	441,152	3,749	16
DB07-11-31	1,038,312	429,998	3,731	17
DB07-11-16C	1,035,139	429,992	3,698	18
DB08-11-18	1,035,133	429,986	3,700	19
DB08-32-12	1,022,352	439,368	3,590	20
DB08-32-11	1,020,339	443,666	3,627	21
DB08-5-1	1,017,626	444,849	3,629	22
DB08-1-7	1,042,271	434,137	3,913	23
DB09-21-1	1,028,628	453,319	3,822	24
API 40 047 05095	1,038,166	433,840	3,792	25
API 40 047 05093	1,032,429	423,452	3,576	26

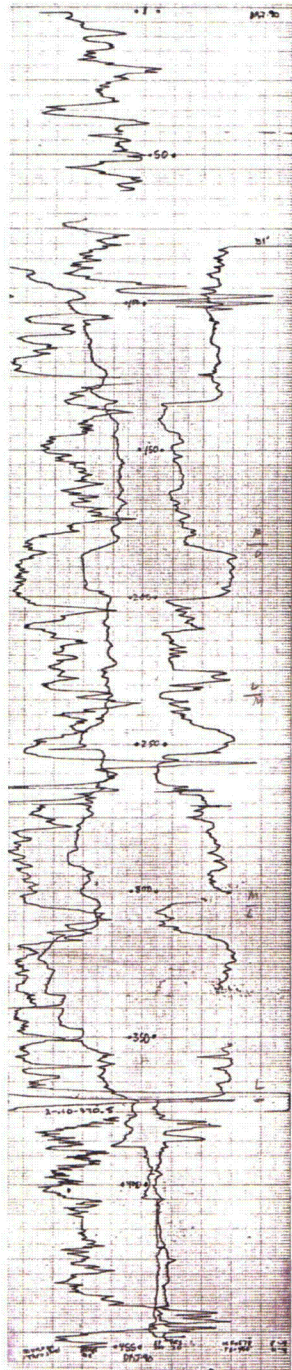
Note: Coordinate system is NAD 27 South Dakota State Plane South

CAT 1



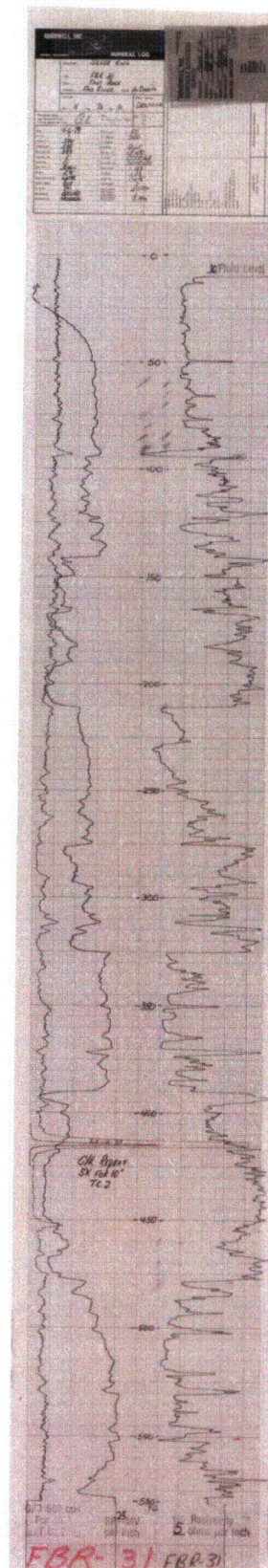
DRJ 90

Element Thermal		Unit °F	
Location 1-10-10	Time 10:00	Date 10/10/10	Page 10
Operator J. B.	Recorder J. B.	Scale 100	Range 100
Notes Open Hole	Remarks 100	Remarks 100	Remarks 100

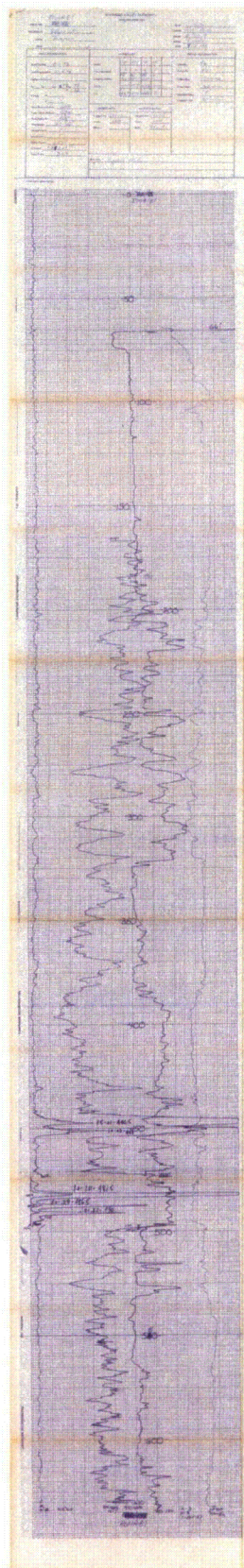


DRJ-90 #675

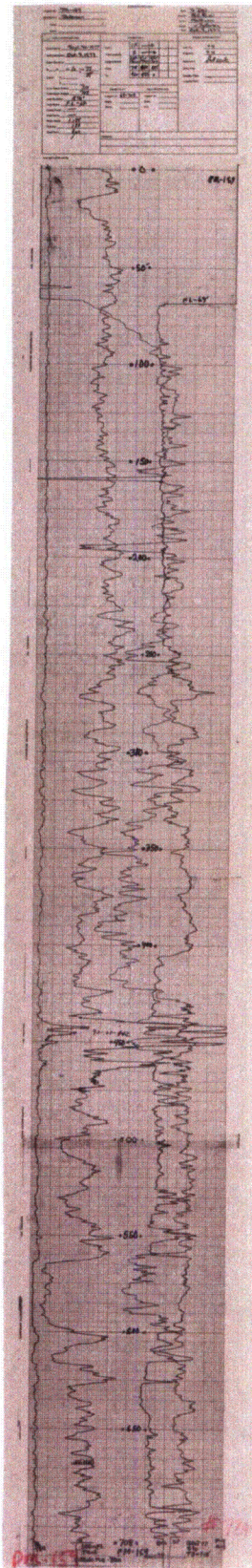
FBR 31



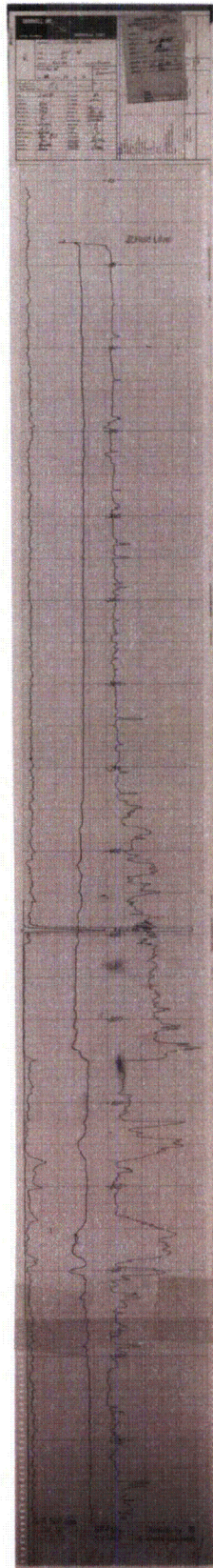
RONA 81



PM 159



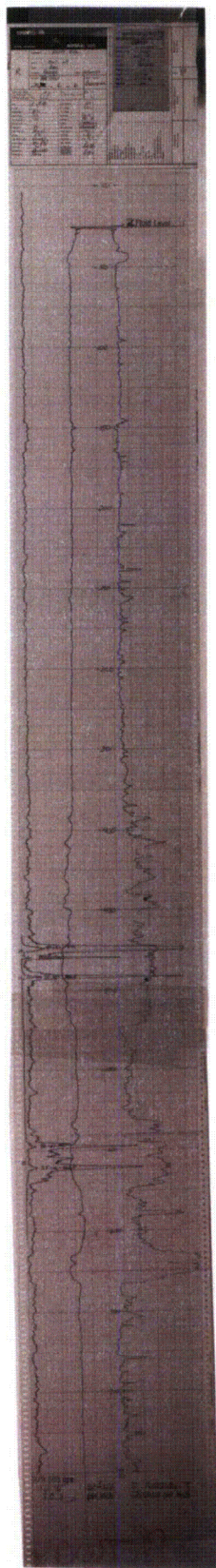
DWT 48





POWERTECH (USA) INC.

DWT 49





POWERTECH (USA) INC.

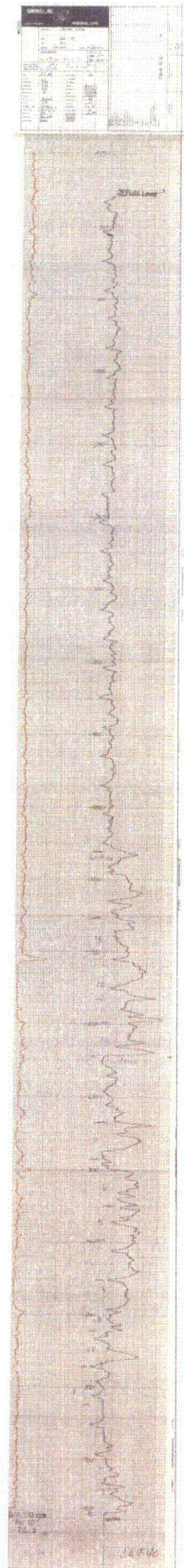
ELT 14





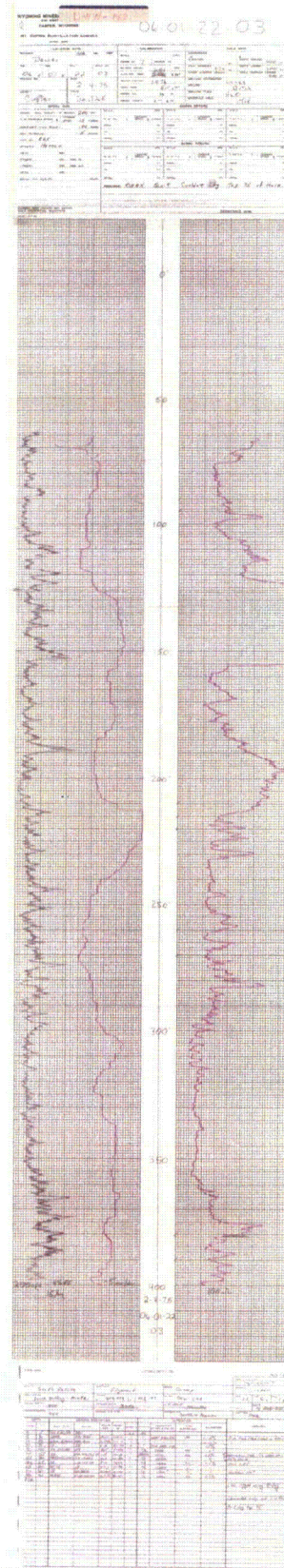
POWERTECH (USA) INC.

DWT 40

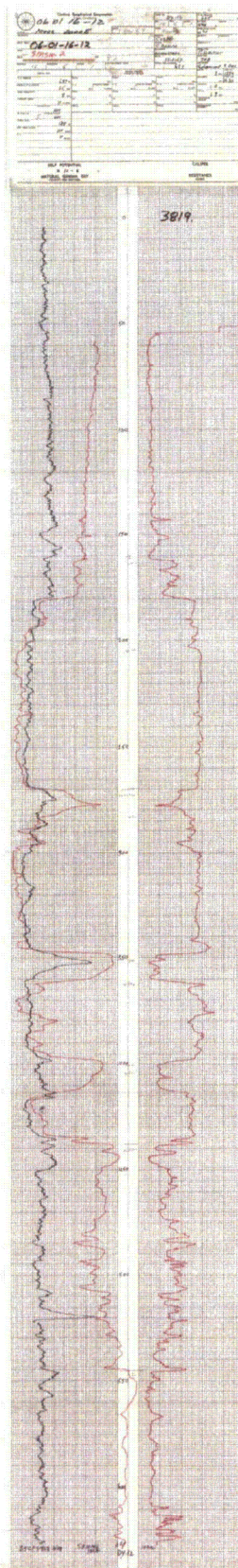


[illegible]

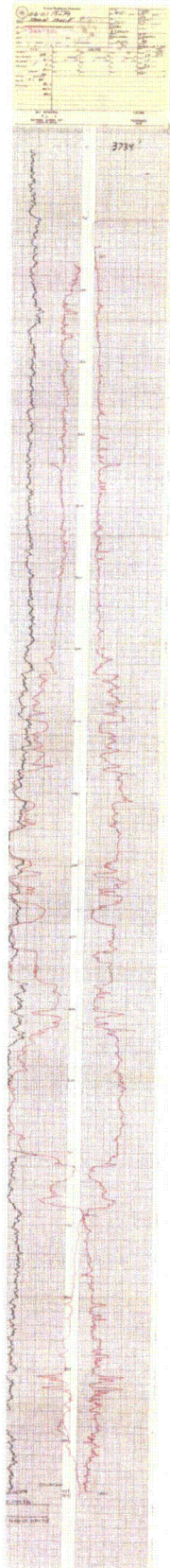
DWW 192



DY 12



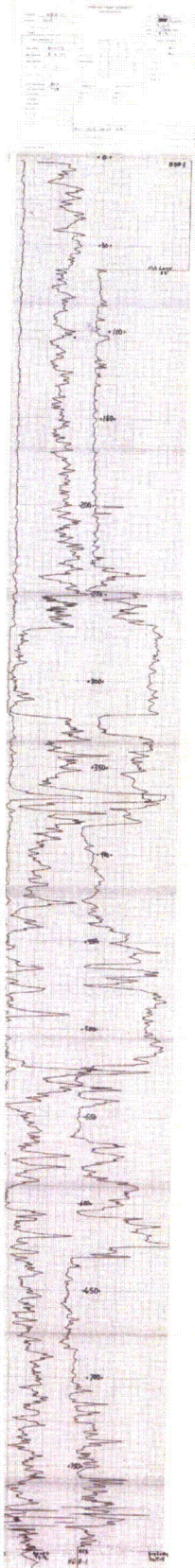
DY 17



DY 308



HDA 1

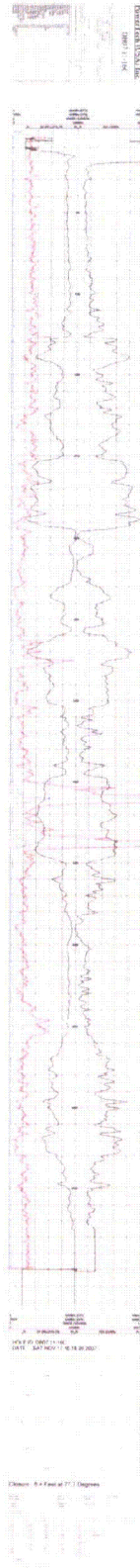


**TRM 38**

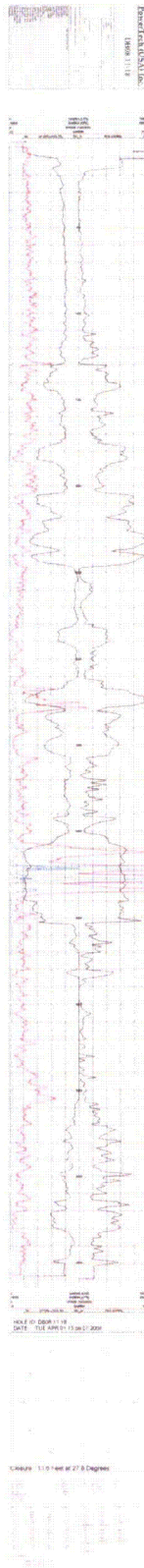
DB07-11-31



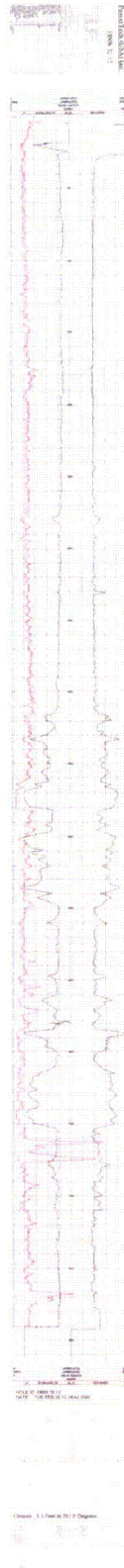
DB07-11-16C



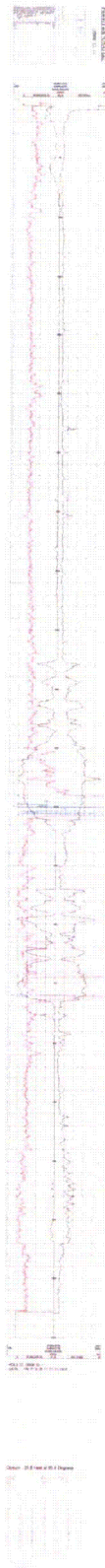
DB08-11-18



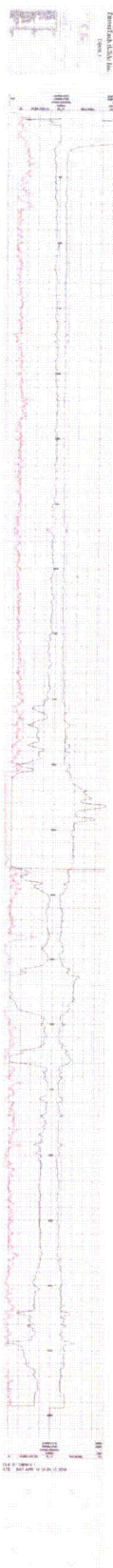
DB08-32-12



DB08-32-11

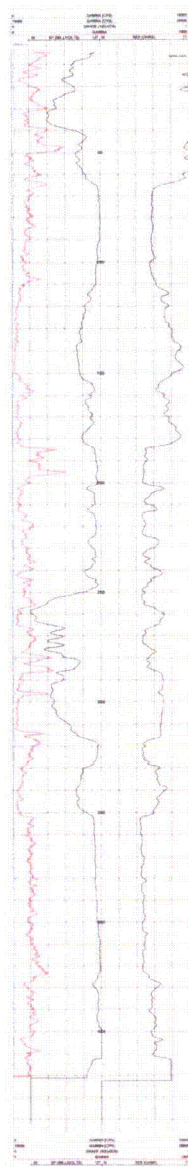


DB08-5-1



DB08-1-7

PowerTech (USA) Inc.
DB08-1-7

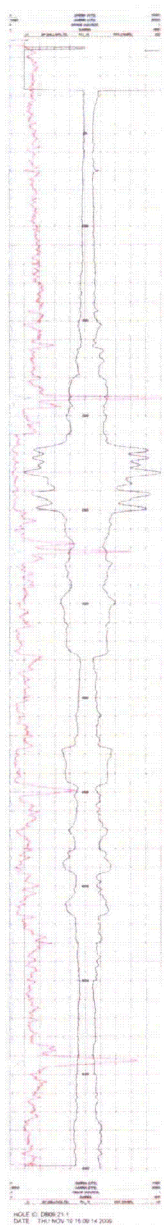


HOLE ID: DB08-1-7
DATE: MON APR 14 15 54 10 2008

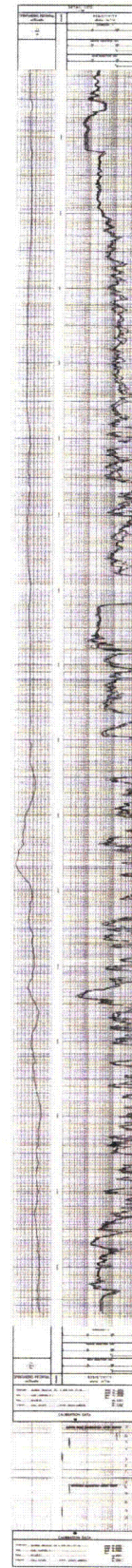
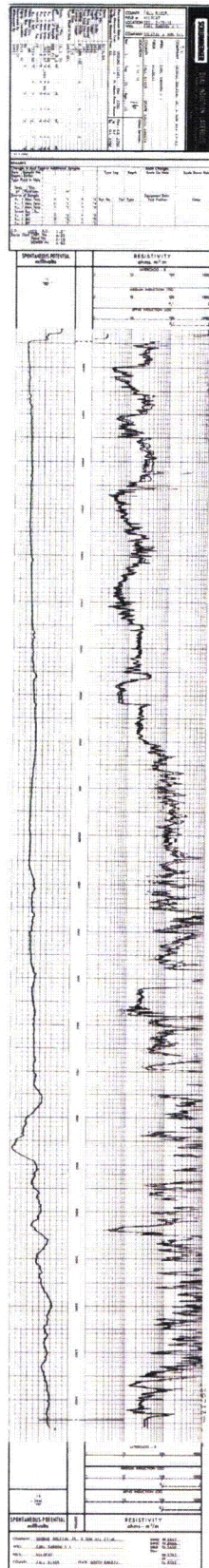
DEPTH (FEET)	LOG	TEMP (°C)	PRESS (PSI)	WELL HEAD PRESS (PSI)	WELL HEAD TEMP (°C)	WELL HEAD LOG	WELL HEAD PRESS (PSI)	WELL HEAD TEMP (°C)	WELL HEAD LOG
0	0	20	0	0	20	0	0	20	0
10	1	20	10	10	20	10	10	20	10
20	2	20	20	20	20	20	20	20	20
30	3	20	30	30	20	30	30	20	30
40	4	20	40	40	20	40	40	20	40
50	5	20	50	50	20	50	50	20	50
60	6	20	60	60	20	60	60	20	60
70	7	20	70	70	20	70	70	20	70
80	8	20	80	80	20	80	80	20	80
90	9	20	90	90	20	90	90	20	90
100	10	20	100	100	20	100	100	20	100

Closure: 5.1 Feet at 83.0 Degrees

DB09-21-1



API 40 047 05095



API 40 047 05093

