

Welcome & Overview

Workshop on Performance Assessment of Near-Surface Disposal Facilities

Larry W. Camper, CEP, CIPM
Director

Division of Waste Management and Environmental Protection
Office of Federal and State Materials and Environmental
Management Programs

August 29 – 30, 2012
U.S. Nuclear Regulatory Commission
Rockville, MD



PA Overview

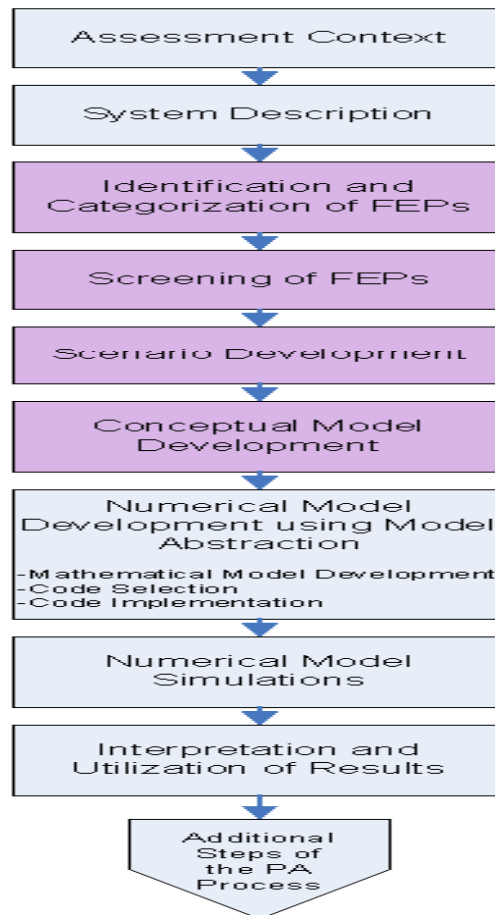


- Site-specific Performance Assessments (PA) are crucial in evaluation of the performance of LLRW disposal facilities
- PA analysis are key elements in LLW regulatory development and licensing reviews
- PA analysis are key aspects to demonstrate compliance with safety and environmental protection



Main Steps of LLW Performance Assessment

Initial Steps of the Performance Assessment Process



WORKSHOP PURPOSE



- Engage in exchange of information and knowledge transfer of PA approaches and methodologies in support of assessment of LLW disposal facilities
- Address PA approaches for analysis of features, events, and processes associated with near surface disposal
- Address rationale and approaches to establish LLW conceptual models and exposure scenarios for protection of potential intruder, the public, and the environment
- Discuss available models/codes, their updates, potential application, and approaches of selection to serve LLW PA needs



Workshop Information



- Information, to be gathered in a NUREG/CP, will be used to enhance future guidance on PA for LLW near surface disposal
- Workshop video and presentation slides will be presented on NRC website

