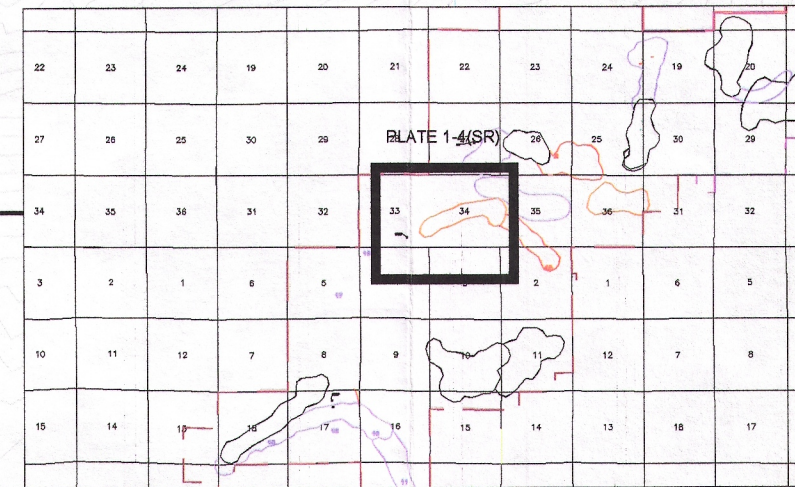


- 2012-2013 PROPOSED AREAS OF DEVELOPMENT
- 2011-2012 NEW DISTURBANCE AREAS
- EROSION CONTROLS
- EXCURSION WELLS (CURRENT)
- EXCURSION WELLS (RESOLVED)
- SPILES
- UNDERLYING MONITOR WELL
- OVERLYING MONITOR WELL
- PRODUCTION MONITOR WELL
- WELL FIELD TREND WELL
- WELL FIELD RESTORATION WELL
- OLD PUMP TEST WELLS FOR UNDERGROUND WORKINGS
- AIR SAMPLING STATION
- GROUND WATER SAMPLING LOCATION
- SURFACE WATER SAMPLING STATION
- PERMIT 603 BOUNDARY
- PERMIT 633 BOUNDARY
- POWERLINES
- EXISTING TOPSOIL
- NEW OR ADDED TOPSOIL
- STREAM CHANNEL
- RESTORATION COMPLETE - AWAITING DECOMMISSIONING
- RESTORATION IN PROGRESS
- RESTORATION PENDING 2012-2013
- ACTIVE - PRODUCTION
- PROPOSED PAVED ROAD
- GRAVEL ROAD
- TWO TRACK

INDEX MAP



REVISIONS			
NO.	DATE	BY	DESCRIPTION
1	01/11/11	JD	INITIAL DESIGN
2	02/11/11	JD	REVISED DESIGN
3	03/11/11	JD	FINAL DESIGN

SCALE IN FEET
0 125 250 500

PLATE 1-4(SR)

CAMCO

SMITH RANCH PROJECT
PERMIT TO MINE 633

DATE: 01/11/11
DRAWN BY: JD
CHECKED BY: JD
APPROVED BY: JD

R-74W

T-36N

T-35N

T-35N