

DTE ENERGY COMPANY
MONROE TOWNSHIP, MONROE COUNTY, MICHIGAN
FERMI 3 OFFSITE MITIGATION AREA

710 AVIS DRIVE
ANN ARBOR, MI 48108
PHONE: (734) 665-6000 FAX (734) 665-2570

www.tetratech.com



PROJECT LOCATION: MONROE TOWNSHIP, MONROE COUNTY, MICHIGAN

CLIENT INFORMATION: DTE ENERGY COMPANY
DETROIT, MICHIGAN

Tt PROJECT No.: 200-01278-11007

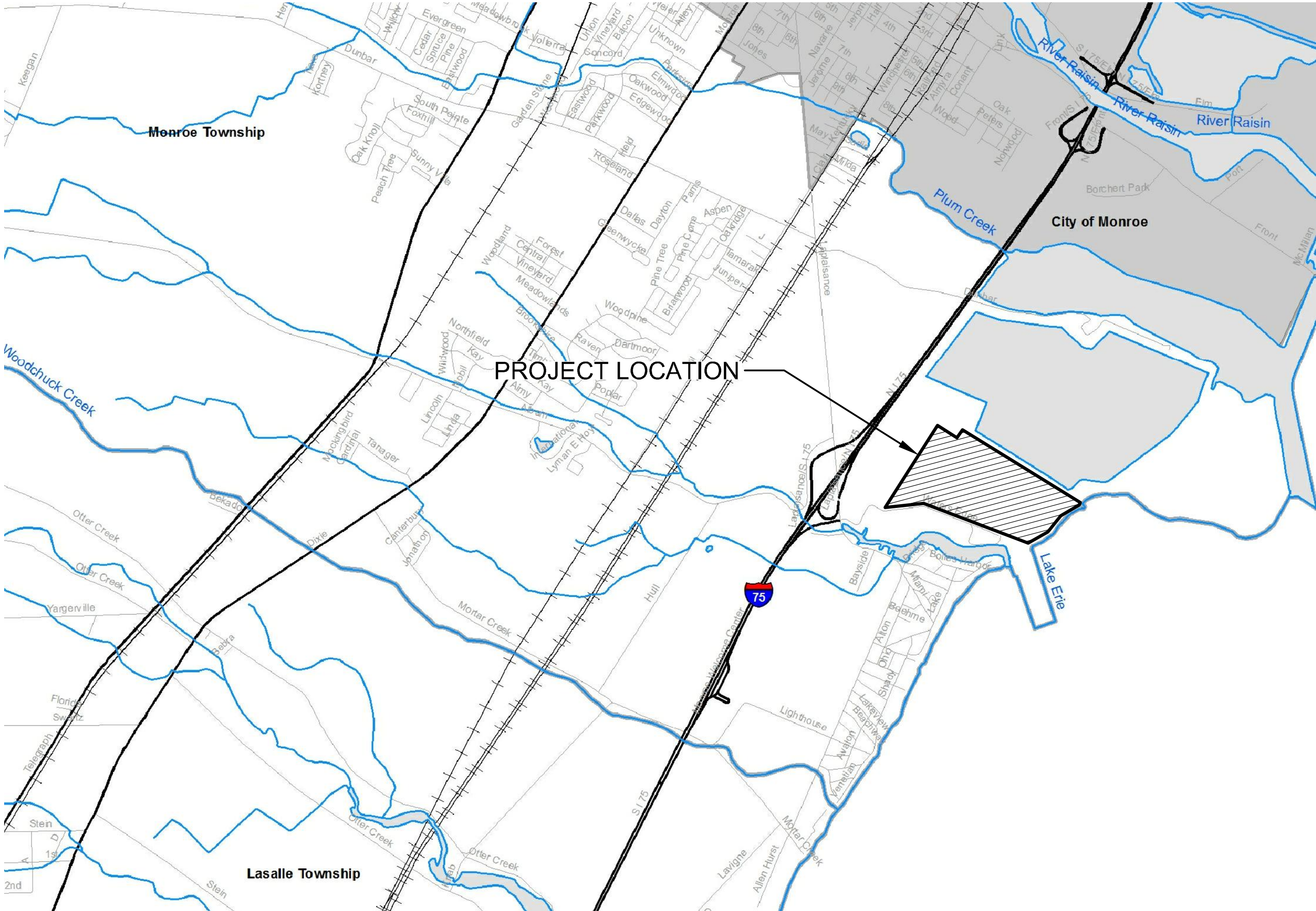
CLIENT PROJECT No.:

PROJECT DESCRIPTION / NOTES:
FERMI 3 OFFSITE MITIGATION AREA

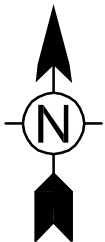
ISSUED:

6/1/2012 - FINAL SUBMITTAL
7/20/2012 - REVISED

VICINITY MAP:



LOCATION MAP
SCALE: 1"=2000'



SHEET INDEX	
SHEET NUMBER	SHEET TITLE
	COVER SHEET
G001	LEGEND, GENERAL NOTES
C101	OVERALL EXISTING SITE PLAN
C102	SESC SITE PLAN AND LEGEND
C103	OVERALL GRADING PLAN
C104	ENLARGED GRADING PLAN
C105	ENLARGED GRADING PLAN
C106	ENLARGED GRADING PLAN
C107	ENLARGED GRADING PLAN
C108	ENLARGED GRADING PLAN
C109	ENLARGED GRADING PLAN
C110	ENLARGED GRADING PLAN
C111	ENLARGED GRADING PLAN
C112	PROPOSED PROFILES - PROFILE A-A
C113	PROPOSED PROFILES - PROFILE B-B
C114	PROPOSED PROFILES - PROFILE C-C
C115	PROPOSED PROFILES - PROFILE D-D, E-E
C116	PROPOSED PROFILES - PROFILE F-F, G-G
C501	CHANNEL CUT DETAILS
C502	EMERGENCY SPILLWAY AND WATER CONTROL STRUCTURE DETAILS
C503	DAVIS DRAIN OVERFLOW 3-SIDED CULVERT
C504	DAVIS DRAIN OVERFLOW & LOWFLOW CULVERT DETAILS
L101	OVERALL PLANTING PLAN

7/18/2012 9:20:40 AM - O:\PROJECTS\ANN ARBOR\IER01278\200-01278-11007\CAD\SHEETFILES\G001 LEGEND.DWG - HOLLENBECK, TODD

F
E
D
C
B
A

LEGEND - SITE IMPROVEMENTS

STRUCTURES

	PROPOSED SUPERSTRUCTURE
	STRUCTURE (TANKS, ETC.)
	EXISTING SUPERSTRUCTURE
	EXISTING UNDERGROUND STRUCTURE
	FUTURE STRUCTURE

UTILITY LINES

	12"SS	GRAVITY SANITARY SEWER
	8"FM	SANITARY FORCEMAIN
	8"C	COMBINED SEWER
	8"SD	STORM SEWER
	12"CMP	CULVERT WITH HEADWALL
	12"W	WATER MAIN
	4"G	GAS
	E	ELECTRIC CONDUIT
	UG	UNDERGROUND ELECTRIC CABLE
	DB	DUCT BANK
	OE	OVERHEAD ELECTRIC
	OT	OVERHEAD TELEPHONE
	OU	OVERHEAD UTILITY
	T	TELEPHONE
	FO	FIBER OPTIC
	TV	TV CABLE
	36"S	PROP. UTILITY LINE 36" AND LARGER (PLAN)
	36"S	EXISTING UTILITY LINE 36" AND LARGER (PLAN)
	36"S	PROP. UTILITY LINE 36" AND LARGER (PROFILE)
	36"S	EXIST. UTILITY LINE 36" AND LARGER (PROFILE)
	36"CP	CASING PIPE

FEATURE LINES

	FENCE
	GUARDRAIL
	SOIL EROSION CONTROL
	EDGE OF WATER SURFACE
	CENTERLINE OF DITCH
	WETLAND LINE
	EXISTING WETLAND AREA
	RAILROAD
	PAVED ROADWAYS
	PROPOSED PAVED ROADWAYS
	GRAVEL ROADWAYS
	ROADWAY WITH CURB AND GUTTER
	PROPOSED CONTOUR & ELEVATION
	EXISTING CONTOUR & ELEVATION
	EX. APPROXIMATE CONTOUR (GROUND OBSCURED)
	CENTERLINE
	MATCH LINE
	PROPERTY LINE
	SECTION LINE
	ADJACENT PROPERTY W/ SAME OWNER
	EASEMENT LINE
	SETBACK LINE
	TREE/BRUSH LINE
	GRADING LIMITS

NOTE: HEAVIER LINE WEIGHTS INDICATE PROPOSED WORK.

UTILITY SYMBOLS

	EXISTING MANHOLE
	PROPOSED MANHOLE
	CLEAN OUT
	IN-LINE FLUSHING CONNECTION
	AIR RELEASE STRUCTURE
	EXISTING DRAINAGE STRUCTURE
	PROPOSED DRAINAGE STRUCTURE
	VALVE MANHOLE
	CURB STOP AND BOX
	VALVE AND BOX
	WELL
	FIRE HYDRANT ASSEMBLY
	GAS VALVE BOX
	GAS LINE MARKER
	UTILITY, POWER, OR TEL. POLE
	GUY ANCHOR
	LIGHT - POLE OR FIXED TO STRUCTURE
	TRAFFIC SIGNAL POLE
	ELECTRIC BOX
	TELEPHONE BOX
	CABLE BOX
	FIBER OPTIC BOX

MISCELLANEOUS SYMBOLS

	SB	SOIL BORING
	FI	PROPERTY IRON- FOUND
	FM	PROPERTY MONUMENT- FOUND
	SI	PROPERTY IRON- SET
	SM	PROPERTY MONUMENT- SET
		SURVEY CONTROL POINT
	+100	STAKEOUT COORDINATE POINT
	5	HORIZONTAL CURVE NUMBER
	PW-1	SOIL BORING LOCATION AND NUMBER
	BM-1	BENCH MARK
	12"	DECIDUOUS TREE AND SIZE
	12"	EVERGREEN TREE AND SIZE
	12"	BUSH
	12"	STUMP
	R	ROCK
	P	POST
	PM	PARKING METER
	MB	MAIL BOX
	S	SIGN
	12"	PROPOSED TRAFFIC SIGN
	12"	HANDICAPPED PARKING SPACE
	(120.00)	FINISH GRADE AT STRUCTURE
	+100.00	PROPOSED SPOT ELEVATION
	+100.00	EXISTING SPOT ELEVATION
	26	SOIL EROSION CONTROL MEASURE
	W	WETLAND FLAG

GENERAL NOTES

- THE INTENT OF THE DRAWINGS IS THAT THE CONTRACTOR SHALL FURNISH ALL LABOR, MATERIALS, TOOLS, EQUIPMENT AND TRANSPORTATION NECESSARY FOR THE PROPER EXECUTION OF THE WORK IN ACCORDANCE WITH THE CONTRACT DOCUMENTS AND ALL INCIDENTAL WORK NECESSARY TO COMPLETE THE PROJECT IN AN ACCEPTABLE MANNER, READY FOR USE, OCCUPANCY, OR OPERATION BY DETROIT EDISON.
- IT SHALL BE THE CONTRACTOR'S RESPONSIBILITY TO WORK ALL APPLICABLE DRAWINGS AND THE APPROPRIATE SPECIFICATIONS AS A UNIT. ANY OMISSIONS, DELETIONS, OR CONFLICTS ARISING AS A RESULT OF FAILURE TO INCORPORATE ALL DRAWINGS AND SPECIFICATIONS WHICH APPLY SHALL BE CORRECTED BY THE CONTRACTOR AT NO ADDITIONAL COST TO THE OWNER AND/OR ENGINEER.
- THE CONTRACTOR IS RESPONSIBLE FOR FOLLOWING ALL APPLICABLE OSHA REGULATIONS.
- CONTRACTOR TO COORDINATE ALL WORK WITH OTHER ONGOING CONSTRUCTION.
- A GEOTECHNICAL ENGINEERING STUDY EXPLORING THE SUBSURFACE CONDITIONS IS LOCATED AS AN APPENDIX TO THE SPECIFICATIONS.
- INDIVIDUAL TREES WHICH DO NOT HAVE A SIZE SHOWN ARE LESS THAN 8-INCHES IN DIAMETER. REMOVAL OF TREES LESS AND BRUSH THAN 8-INCHES IN DIAMETER ARE CONSIDERED INCIDENTAL CLEARING AND MACHINE GRADING PAY ITEMS.
- ANY DISTURBED OR DAMAGE DONE OUTSIDE THE GRADING LIMITS SHALL BE RESTORED BY THE CONTRACTOR AT NO ADDITIONAL COST TO THE OWNER.
- THE CONTRACTOR IS TO MAINTAIN ACCESS TO ALL RESIDENTIAL AND COMMERCIAL PROPERTIES AT ALL TIMES.
- ALL EQUIPMENT BROUGHT TO THE SITE WILL BE THOROUGHLY CLEANED OF ALL SOIL BEFORE ENTRY INTO ANY MITIGATION ZONES. ALL SOIL MATERIALS AND AMENDMENTS BROUGHT TO THE MITIGATION SITE FROM OFFSITE LOCATIONS WILL REQUIRE PRE-APPROVAL BY THE ENGINEER TO ENSURE THAT THESE ARE NOT SOURCES OF POTENTIAL INVASIVE SPECIES CONTAMINATION.

SURVEY & UTILITY NOTES

- EFFORTS HAVE BEEN MADE TO INDICATE LOCATIONS OF EXISTING STRUCTURES, PIPING, UTILITIES AND TOPOGRAPHY. HOWEVER, THE CONTRACTOR SHALL BE RESPONSIBLE FOR VERIFYING EXACT SIZES AND LOCATIONS OF ALL EXISTING ITEMS BEFORE INITIATING ANY CONSTRUCTION OPERATIONS. ANY EXISTING STRUCTURE, PIPING, OR UTILITY DISTURBED OR DAMAGED BY THE CONTRACTOR DURING CONSTRUCTION OPERATIONS SHALL BE REPLACED BY THE CONTRACTOR AT NO ADDITIONAL COST TO THE OWNER AND/OR ENGINEER. THE CONTRACTOR SHALL BE RESPONSIBLE FOR ALL COORDINATION ACTIVITIES WITH THE OWNER OF ANY FACILITY DISTURBED OR PLANNED TO BE DISTURBED.
- CONTRACTOR SHALL VERIFY LOCATIONS AND ELEVATIONS OF EXISTING UTILITIES AT CROSSINGS.
- HAND DIG TO LOCATE AND EXPOSE EXISTING UTILITIES AT CONNECTION POINTS AND UTILITY CROSSINGS.
- BEFORE COMMENCING WORK, THE CONTRACTOR SHALL VERIFY ALL MEASUREMENTS AND CONDITIONS AT THE SITE. ANY DISCREPANCIES BETWEEN THE ACTUAL MEASUREMENTS AND CONDITIONS SHOWN ON THE DRAWINGS SHALL BE DOCUMENTED BY THE CONTRACTOR IN WRITING AND SUBMITTED TO THE OWNER'S REPRESENTATIVE FOR CONSIDERATION AND DECISION BEFORE THE WORK PROCEEDS.
- TOPOGRAPHIC SURVEY WAS PERFORMED APRIL 2012 BY TETRA TECH, INC. HORIZONTAL DATUM IS MICHIGAN STATE COORDINATE SYSTEM SOUTH ZONE AND VERTICAL DATUM IS IGLD 1985.
- ALL SECTION CORNERS, MONUMENT BOXES, PROPERTY CORNERS AND BENCHMARKS SHALL BE RESERVED, WHETHER SHOWN OR NOT. DISTURBED OR DAMAGED SECTION CORNERS, MONUMENT BOXES, PROPERTY CORNERS AND BENCHMARKS SHALL BE REPLACED AND/OR REINSTALLED BY A PROFESSIONAL SURVEYOR HIRED BY THE CONTRACTOR AT NO ADDITIONAL COST TO THE OWNER AND/OR ENGINEER.

MDOT STANDARD DETAILS

WHERE THE FOLLOWING ITEMS ARE CALLED FOR ON PLANS THEY ARE TO BE CONSTRUCTED ACCORDING TO THE MOST RECENT M.D.O.T. STANDARD PLAN. THE MOST COMMONLY USED DETAILS ARE SHOWN BELOW.

R83-B UTILITY TRENCHES

R96-E SOIL EROSION AND SEDIMENTATION CONTROL MEASURES



www.tetratech.com
710 AVIS DRIVE
ANN ARBOR, MI 48108
PHONE (734) 865-6000 FAX (734) 865-2570

MARK	DATE	DESCRIPTION	BY

DTE ENERGY COMPANY
MONROE TOWNSHIP, MONROE COUNTY, MICHIGAN
FERMI 3 OFFSITE MITIGATION AREA

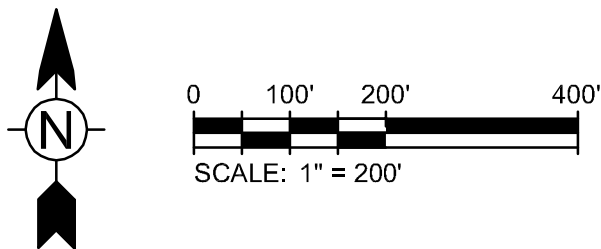
LEGEND, GENERAL NOTES

Project No.: 200-01278-11007
Designed By: J. SIWEK
Drawn By: T. HOLLENBECK
Checked By: N. MCPHERSON

G001

Bar Measures 1 inch

Copyright: Tetra Tech

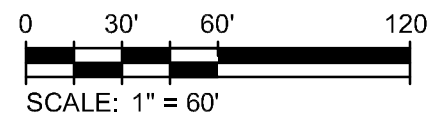
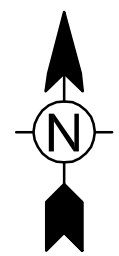
[illegible]

**OVERALL GRADING PLAN
SHEET INDEX**

Project No.:	200-01278-11007
Designed By:	J. SIWEK
Drawn By:	T. HOLLENBECK
Checked By:	N. McPHERSON

C103

7/19/2012 3:21:16 PM - C:\PROJECTS\ANN ARBOR\RIER\01278\200-01278-11007\CAD\SHEETFILES\C104.PLAN.DWG - SHANK, JASON



MATCHLINE SEE SHEET C106

DTE ENERGY COMPANY
MONROE TOWNSHIP, MONROE COUNTY, MICHIGAN
FERMI 3 OFFSITE MITIGATION AREA

ENLARGED GRADING PLAN

Project No.: 200-01278-11007
Designed By: J. SIWEK
Drawn By: T. HOLLENBECK
Checked By: N. McPHERSON

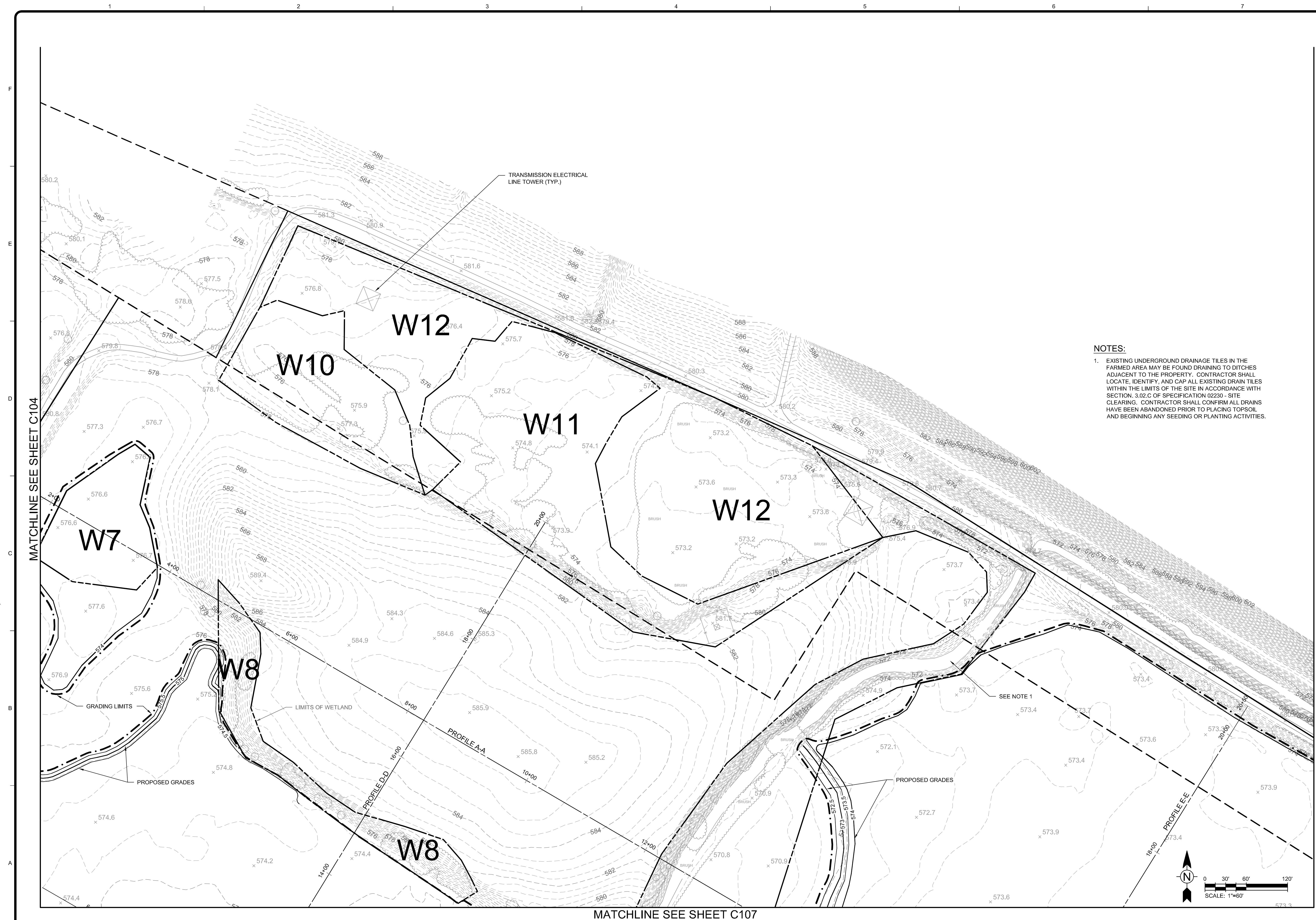
C104

MARK	DATE	DESCRIPTION	BY



www.tetratech.com
710 AVIS DRIVE
ANN ARBOR, MI 48108
PHONE (734) 665-6000 FAX (734) 665-2570

Copyright: Tatra Tech



7/19/2012 3:18:08 PM - O:\PROJECTS\ANN ARBOR\IER\01278\200-01278-1\1007\CAD\SHEETFILES\C106 PLAN.DWG - SHANK, JASON

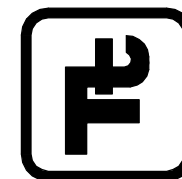
MATCHLINE SEE SHEET C109

DTE ENERGY COMPANY
MONROE TOWNSHIP, MONROE COUNTY, MICHIGAN
FERMI 3 OFFSITE MITIGATION AREA

Project No.:	200-01278-11007
Designed By:	J. SIWEK
Drawn By:	T. HOLLENBECK
Checked By:	N. McPHERSON

C106

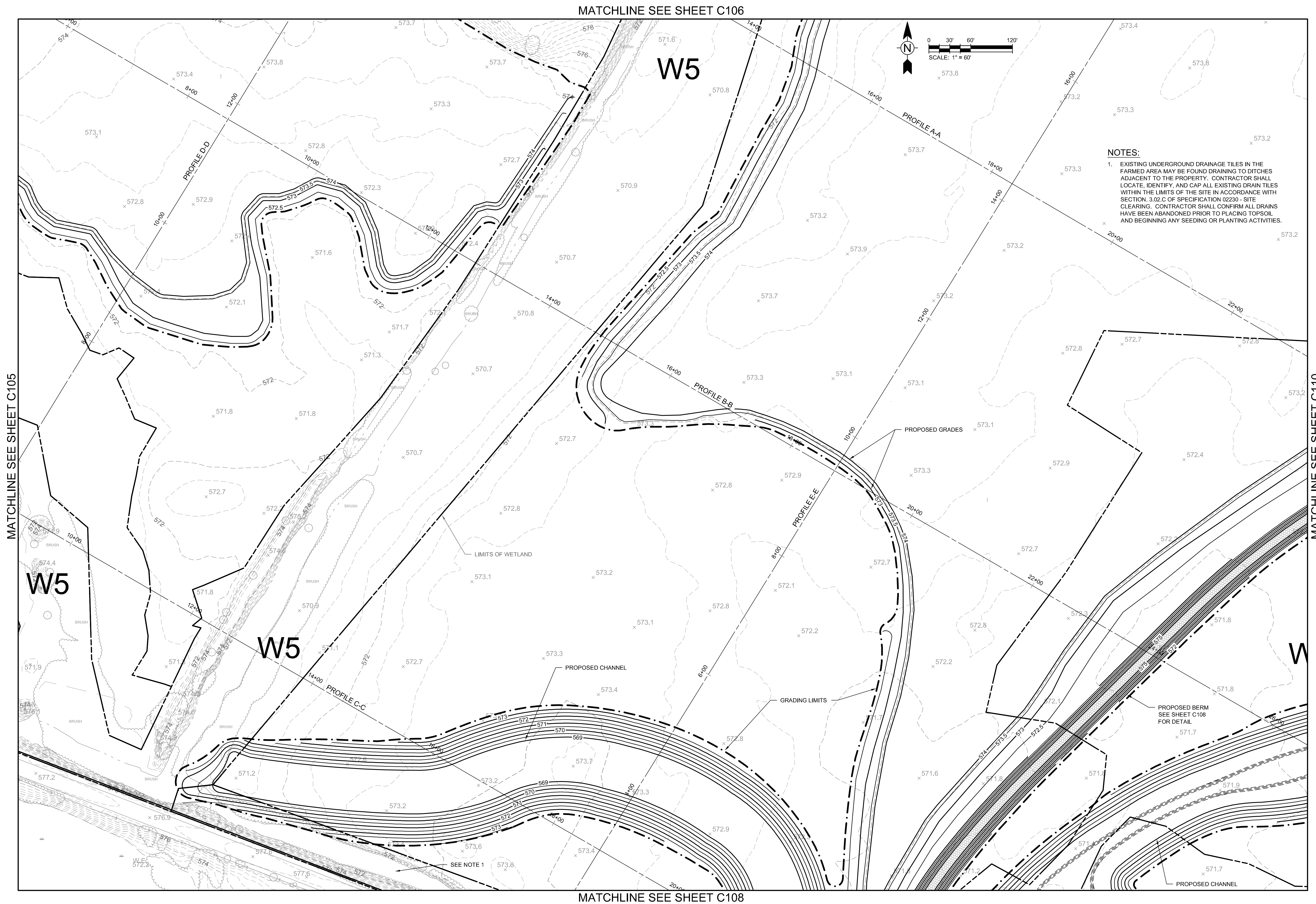
Bar Measures 1 inch



TETRA TECH

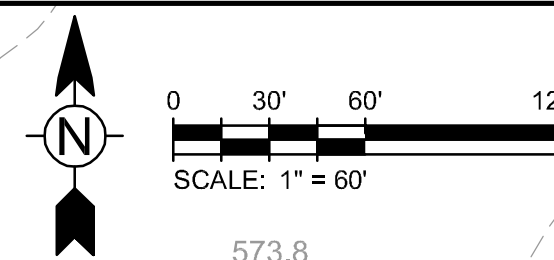
710 AVIS DRIVE
ANN ARBOR, MI 48108
PHONE (734) 665-6000 FAX (734) 665-2570
www.tetratetch.com

Copyright: Tetra Tech



MATCHLINE SEE SHEET C106

W5



NOTES:

1. EXISTING UNDERGROUND DRAINAGE TILES IN THE FARMED AREA MAY BE FOUND DRAINING TO DITCHES ADJACENT TO THE PROPERTY. CONTRACTOR SHALL LOCATE, IDENTIFY, AND CAP ALL EXISTING DRAIN TILES WITHIN THE LIMITS OF THE SITE IN ACCORDANCE WITH SECTION. 3.02.C OF SPECIFICATION 02230 - SITE CLEARING. CONTRACTOR SHALL CONFIRM ALL DRAINS HAVE BEEN ABANDONED PRIOR TO PLACING TOPSOIL, AND BEGINNING ANY SEEDING OR PLANTING ACTIVITIES

MATCHLINE SEE SHEET C110

MARK	DATE	DESCRIPTION	BY
------	------	-------------	----


DTE ENERGY COMPANY
MONROE TOWNSHIP, MONROE COUNTY, MICHIGAN
FERMI 3 OFFSITE MITIGATION AREA

ENLARGED GRADING PLAN

Project No.:	200-01278-11007
Designed By:	J. SIWEK
Drawn By:	T. HOLLENBECK
Checked By:	N. McPHERSON

C107

Copyright: Totem Touch

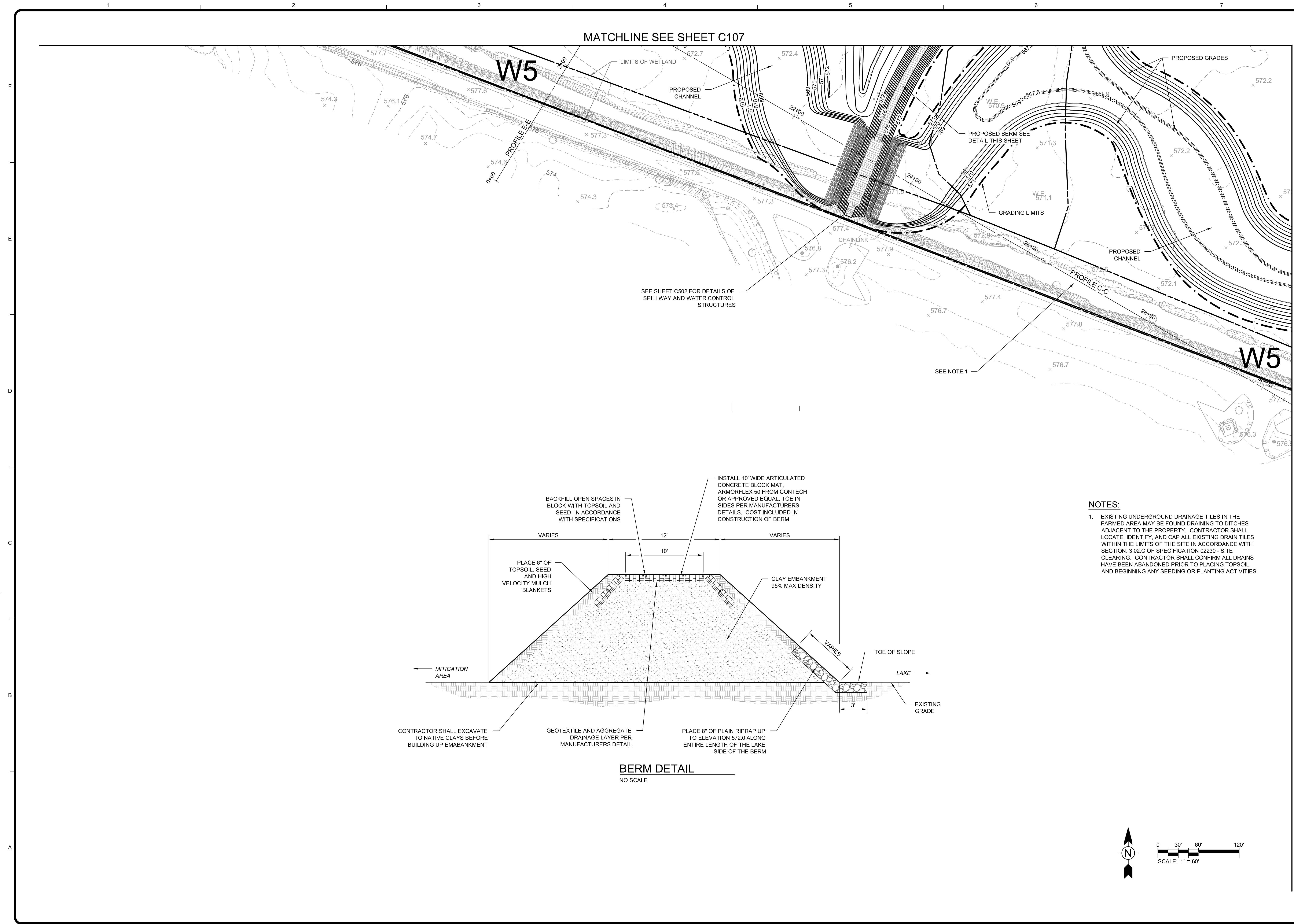


TETRA TECH

www.tetrattech.com
710 AVIS DRIVE
ANN ARBOR, MI 48108
PHONE (734) 665-6000 FAX (734) 665-2570

7/19/2012 3:23:34 PM - O:\PROJECTS\ANN ARBOR\IER\01278\200-01278-1\1007\CAD\SHEETFILES\C107 PLAN.DWG - SHANK, JASON

Bar Measures 1 inch

[illegible]

ENLARGED GRADING PLAN

DTE ENERGY COMPANY
MONROE TOWNSHIP, MONROE COUNTY, MICHIGAN
FERMI 3 OFFSITE MITIGATION AREA

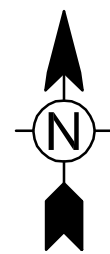
Project No.:	200-01278-11007
Designed By:	J. SIWEK
Drawn By:	T. HOLLENBECK
Checked By:	N. McPHERSON

C108

MATCHLINE SEE SHEET C-106

- TRANSMISSION ELECTRICAL
LINE

MATCHLINE SEE SHEET C110

[illegible]

DTE ENERGY COMPANY
MONROE TOWNSHIP, MONROE COUNTY, MICHIGAN
FERMI 3 OFFSITE MITIGATION AREA

Project No.:	200-01278-11007
Designed By:	J. SIWEK
Drawn By:	T. HOLLENBECK
Checked By:	N. McPHERSON

C109



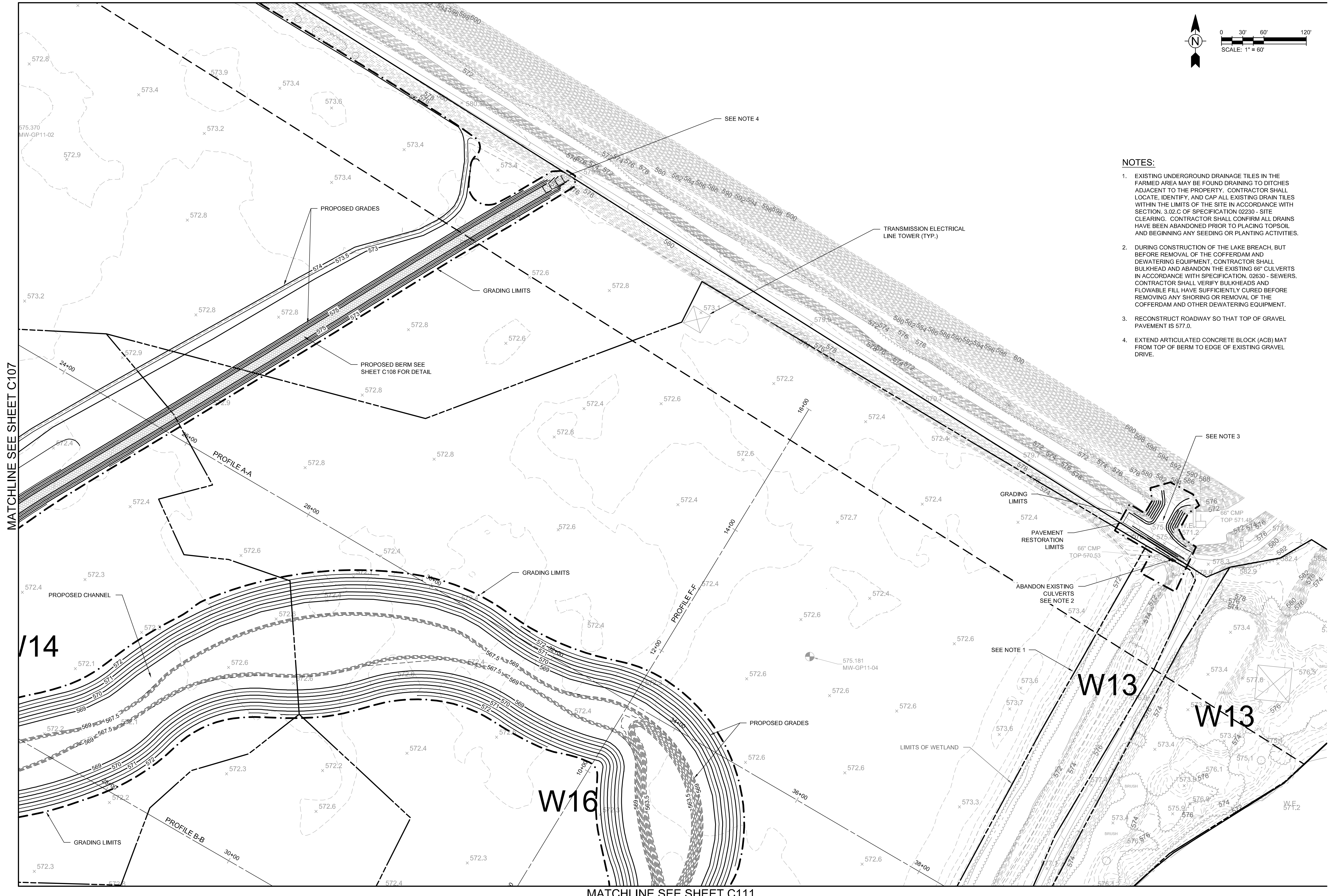
TETRA TECH

www.tetratech.com
710 AVIS DRIVE
ANN ARBOR, MI 48108
PHONE (734) 665-6000 FAX (734) 665-2570

Copyright: Tetra Tech

Bar Measures 1 inch

MATCHLINE SEE SHEET C111



- NOTES:**
1. EXISTING UNDERGROUND DRAINAGE TILES IN THE FARMED AREA MAY BE FOUND DRAINING TO DITCHES ADJACENT TO THE PROPERTY. CONTRACTOR SHALL LOCATE, IDENTIFY, AND CAP ALL EXISTING DRAIN TILES WITHIN THE LIMITS OF THE SITE IN ACCORDANCE WITH SECTION. 3.02.C OF SPECIFICATION 02230 - SITE CLEARING. CONTRACTOR SHALL CONFIRM ALL DRAINS HAVE BEEN ABANDONED PRIOR TO PLACING TOPSOIL AND BEGINNING ANY SEEDING OR PLANTING ACTIVITIES.
 2. DURING CONSTRUCTION OF THE LAKE BREACH, BUT BEFORE REMOVAL OF THE COFFERDAM AND DEWATERING EQUIPMENT, CONTRACTOR SHALL BULKHEAD AND ABANDON THE EXISTING 66" CULVERTS IN ACCORDANCE WITH SPECIFICATION. 02530 - SEWERS. CONTRACTOR SHALL VERIFY BULKHEADS AND FLOWABLE FILL HAVE SUFFICIENTLY CURED BEFORE REMOVING ANY SHORING OR REMOVAL OF THE COFFERDAM AND OTHER DEWATERING EQUIPMENT.
 3. RECONSTRUCT ROADWAY SO THAT TOP OF GRAVEL PAVEMENT IS 577.0.
 4. EXTEND ARTICULATED CONCRETE BLOCK (ACB) MAT FROM TOP OF BERM TO EDGE OF EXISTING GRAVEL DRIVE.

MATCHLINE SEE SHEET C107

14

W16

W13

W1.3



TETRA TECH

710 AVIS DRIVE
ANN ARBOR, MI 48108
PHONE (734) 665-6000 FAX (734) 665-2570
www.tetrattech.com

[illegible]

DTE ENERGY COMPANY
MONROE TOWNSHIP, MONROE COUNTY, MICHIGAN
FERMI 3 OFFSITE MITIGATION AREA
ENLARGED GRADING PLAN

Project No.:	200-01278-11007
Designed By:	J. SIWEK
Drawn By:	T. HOLLENBECK
Checked By:	N. McPHERSON

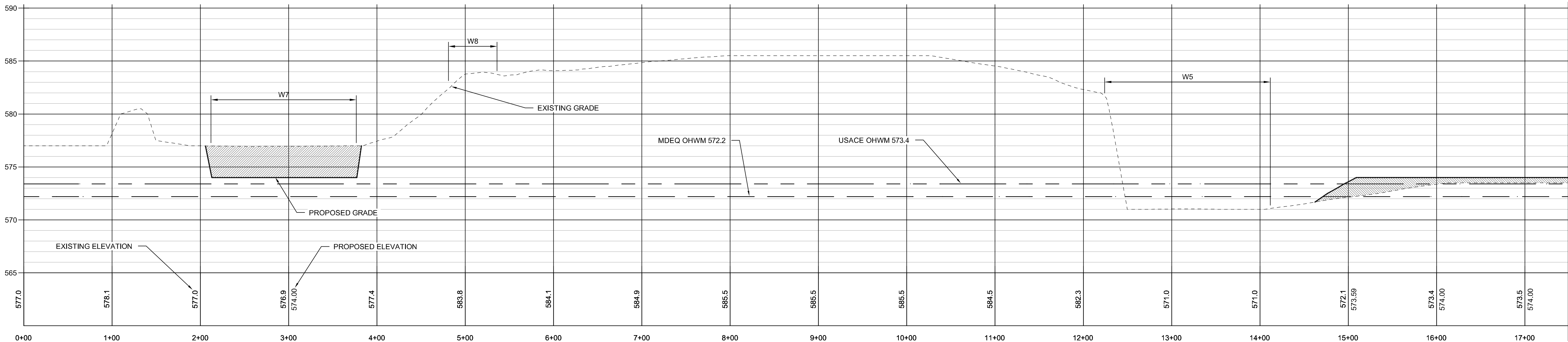
C110

Copyright: Tetra Tech

Bar Measures 1 inch

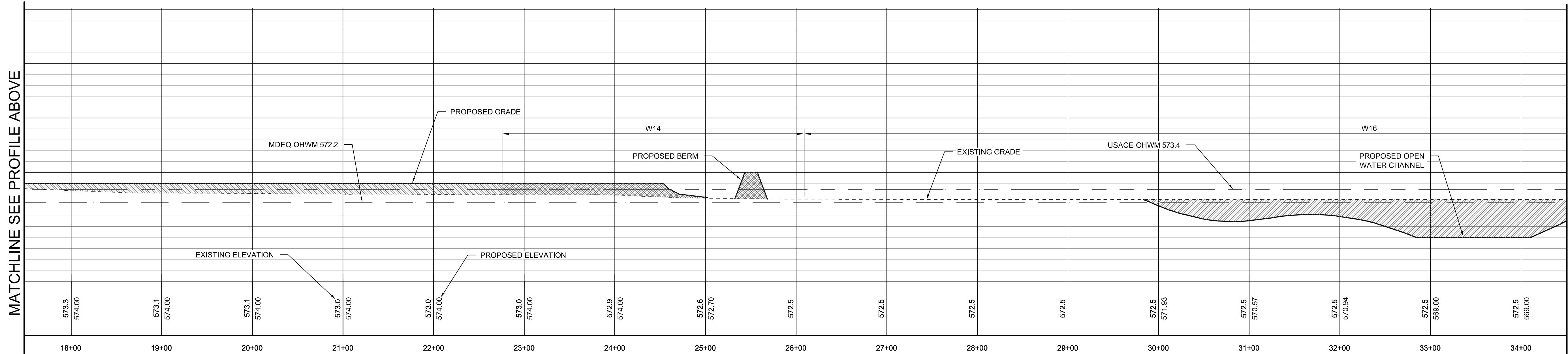
7/17/2012 10:44:29 AM - O:\PROJECTS\ANN ARBOR\NRI\01278\200-01278-11007\CAD\SHEETFILES\C112 PROFILES.DWG - HOLLENBECK, TODD

F
E
D
C
B
A



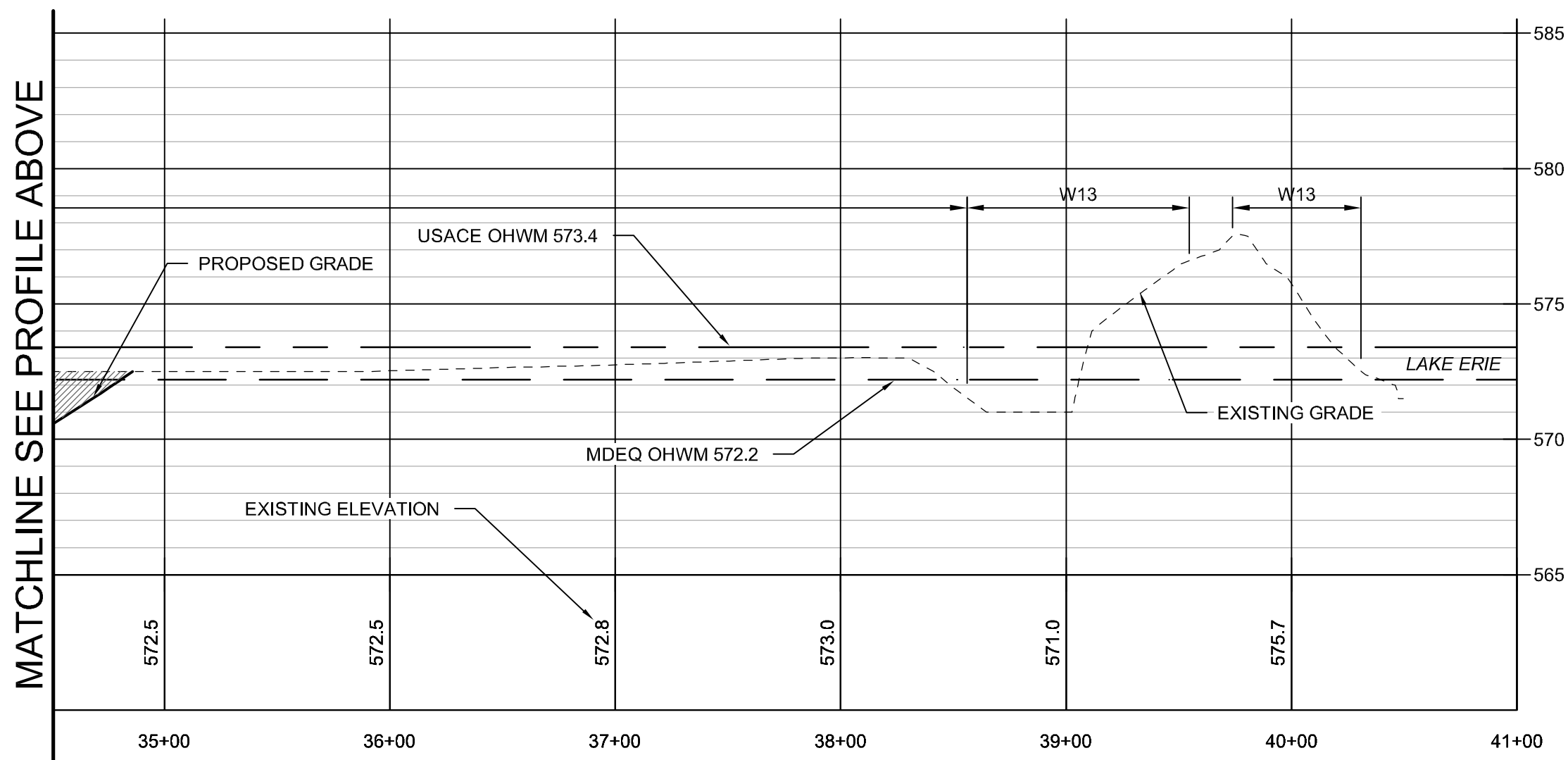
PROFILE A-A
SCALE: 1"=60' H 1"=6' V

MATCHLINE SEE PROFILE BELOW



PROFILE A-A
SCALE: 1"=60' H 1"=6' V

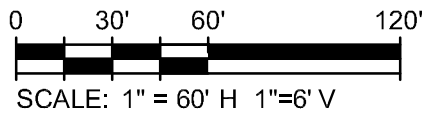
MATCHLINE SEE PROFILE BELOW



PROFILE A-A
SCALE: 1"=60' H 1"=6' V

LEGEND

- AREA OF EXCAVATION
- AREA OF UPLAND FILL
- AREA OF WETLAND FILL



TETRA TECH

www.tetratech.com
710 AVIS DRIVE
ANN ARBOR, MI 48108
PHONE (734) 665-6000 FAX (734) 665-2570

MARK	DATE	DESCRIPTION	BY

DTE ENERGY COMPANY
MONROE TOWNSHIP, MONROE COUNTY, MICHIGAN
FERMI 3 OFFSITE MITIGATION AREA

**PROPOSED PROFILES -
PROFILE A-A**

Project No.: 200-01278-11007
Designed By: J. SIWEK
Drawn By: T. HOLLENBECK
Checked By: N. MCPHERSON

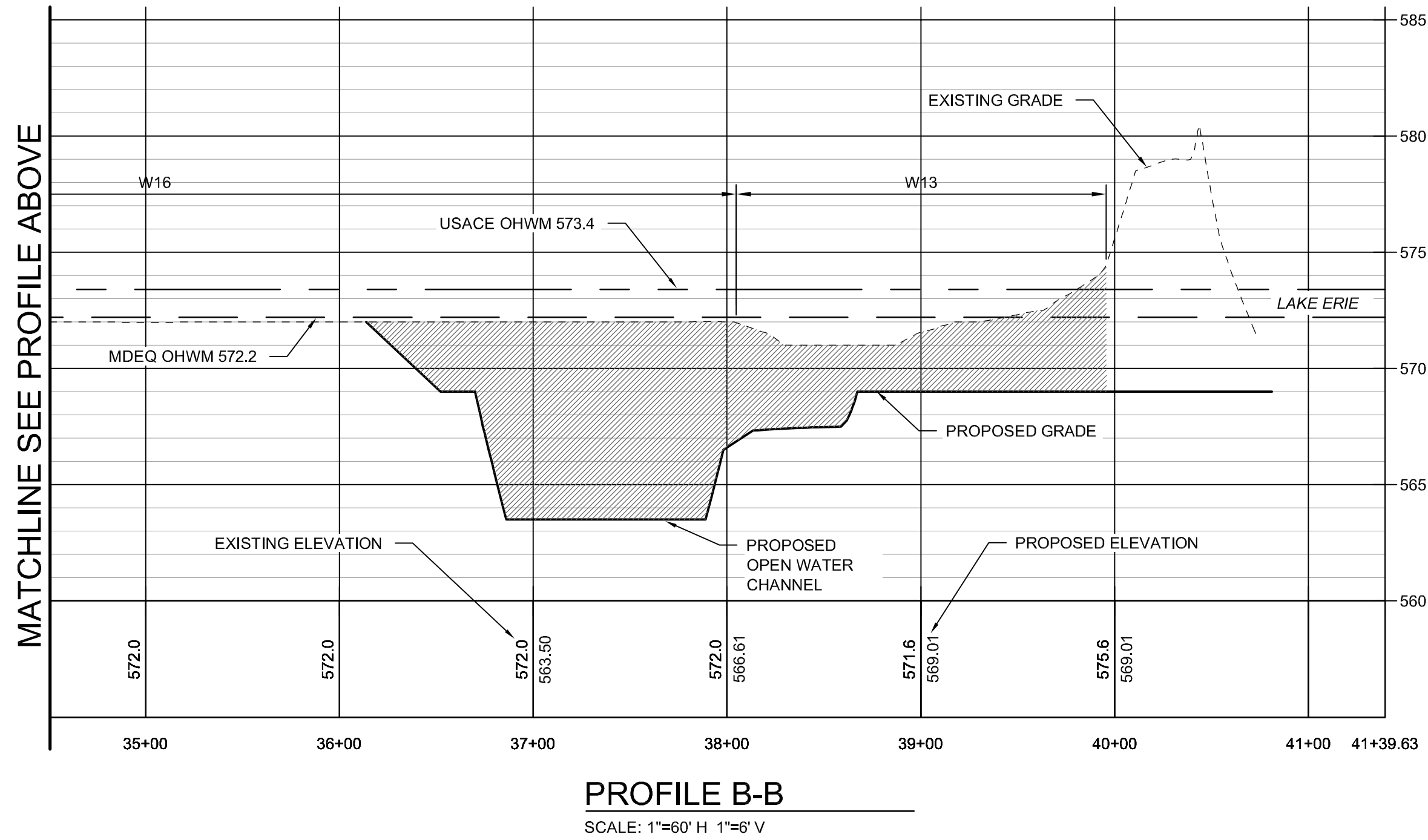
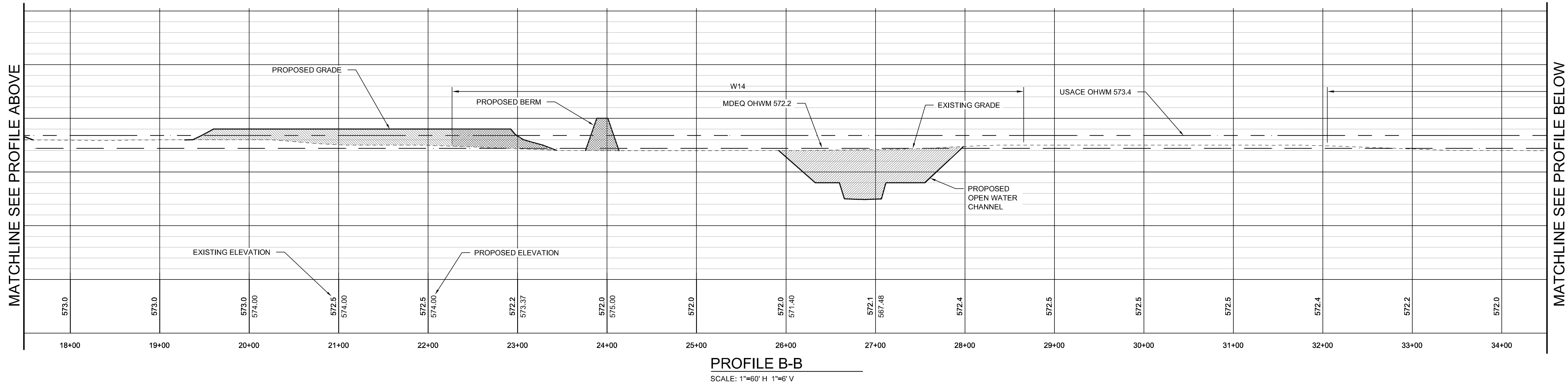
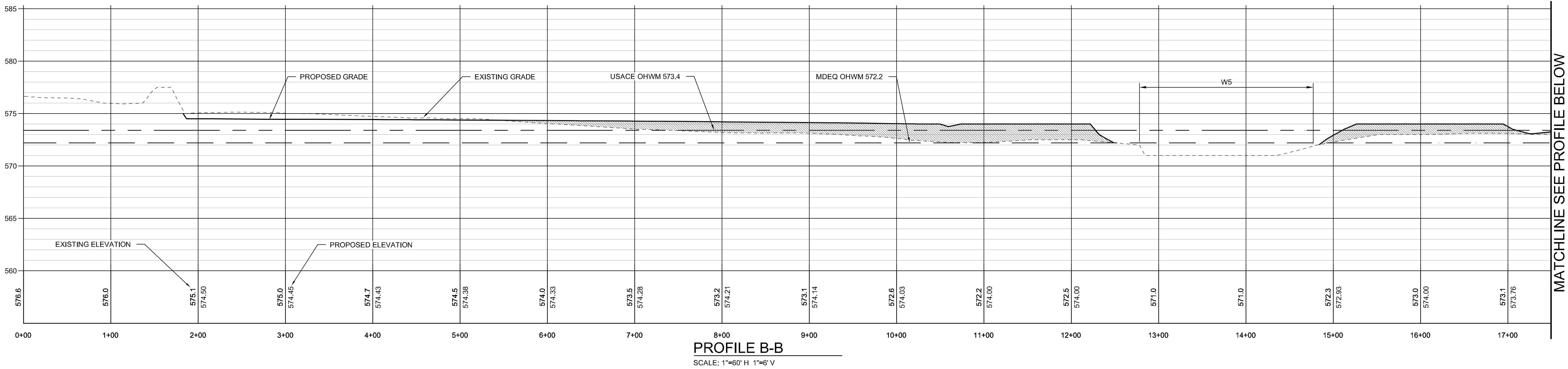
C112

Copyright: Tetra Tech

Bar Measures 1 inch

7/17/2012 10:53:14 AM - O:\PROJECTS\ANN ARBOR\N01278\200-01278-11007\CAD\SHEETFILES\C113 PROFILES.DWG - HOLLENBECK, TODD

F
E
D
C
B
A

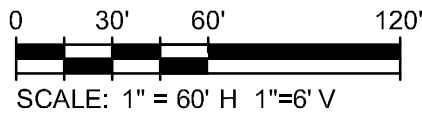



LEGEND

AREA OF EXCAVATION

AREA OF UPLAND FILL

AREA OF WETLAND FILL



**TETRA TECH**
www.tetratech.com
710 AVIS DRIVE
ANN ARBOR, MI 48108
PHONE (734) 665-6000 FAX (734) 665-2570

MARK	DATE	DESCRIPTION	BY

DTE ENERGY COMPANY
MONROE TOWNSHIP, MONROE COUNTY, MICHIGAN
FERMI 3 OFFSITE MITIGATION AREA

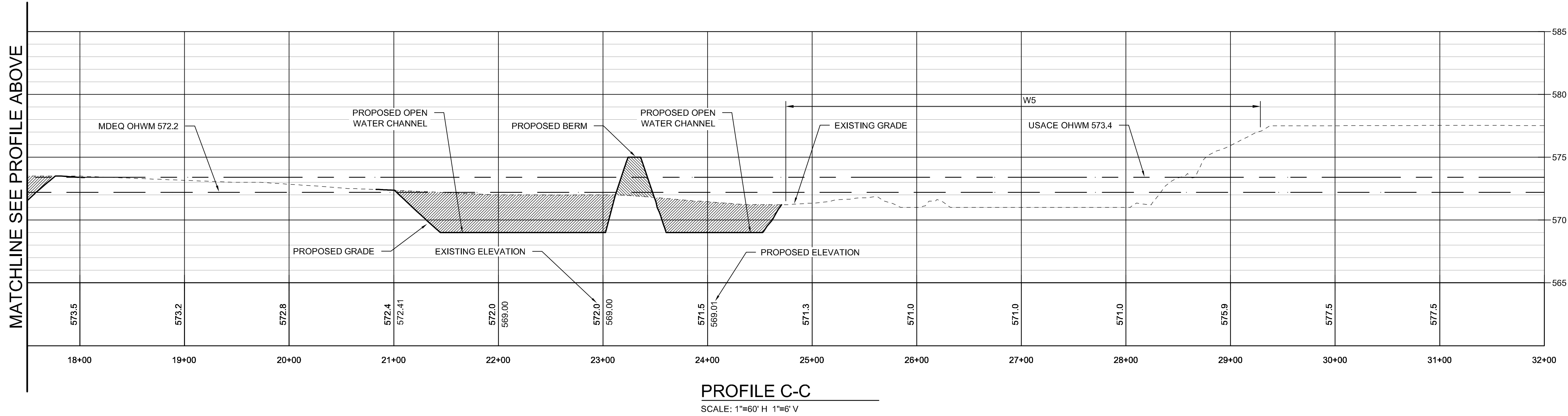
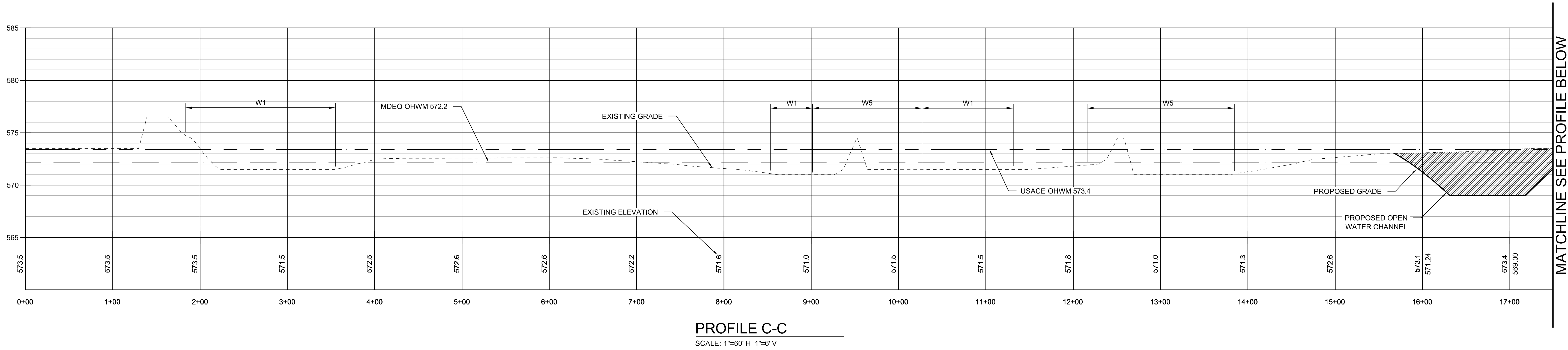
**PROPOSED PROFILES -
PROFILE B-B**

Project No.: 200-01278-11007
Designed By: J. SIWEK
Drawn By: T. HOLLENBECK
Checked By: N. MCPHERSON

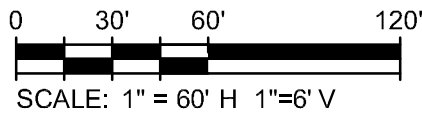
C113
Copyright: Tetra Tech
Bar Measures 1 inch

7/17/2012 10:58:13 AM - O:\PROJECTS\ANN ARBOR\NERR\01278\200-01278-11007\CAD\SHEETFILES\C114 PROFILES.DWG - HOLLENBECK, TODD

F
E
D
C
B
A



- LEGEND**
- AREA OF EXCAVATION
 - AREA OF UPLAND FILL
 - AREA OF WETLAND FILL



www.tetratech.com
710 AVIS DRIVE
ANN ARBOR, MI 48108
PHONE (734) 665-6000 FAX (734) 665-2570

MARK	DATE	DESCRIPTION	BY

DTE ENERGY COMPANY
MONROE TOWNSHIP, MONROE COUNTY, MICHIGAN
FERMI 3 OFFSITE MITIGATION AREA

**PROPOSED PROFILES -
PROFILE C-C**

Project No.: 200-01278-11007
Designed By: J. SIWEK
Drawn By: T. HOLLENBECK
Checked By: N. MCPHERSON

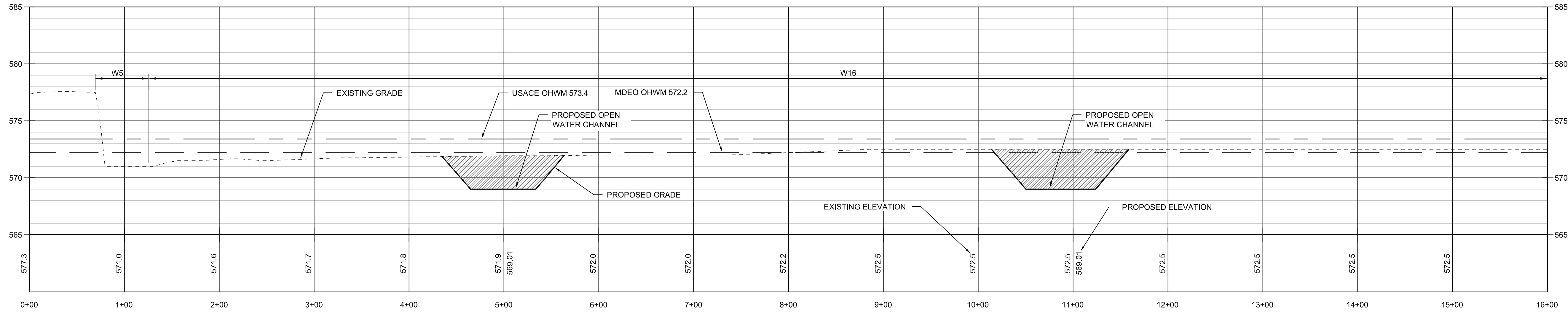
C114

Copyright: Tetra Tech

Bar Measures 1 inch

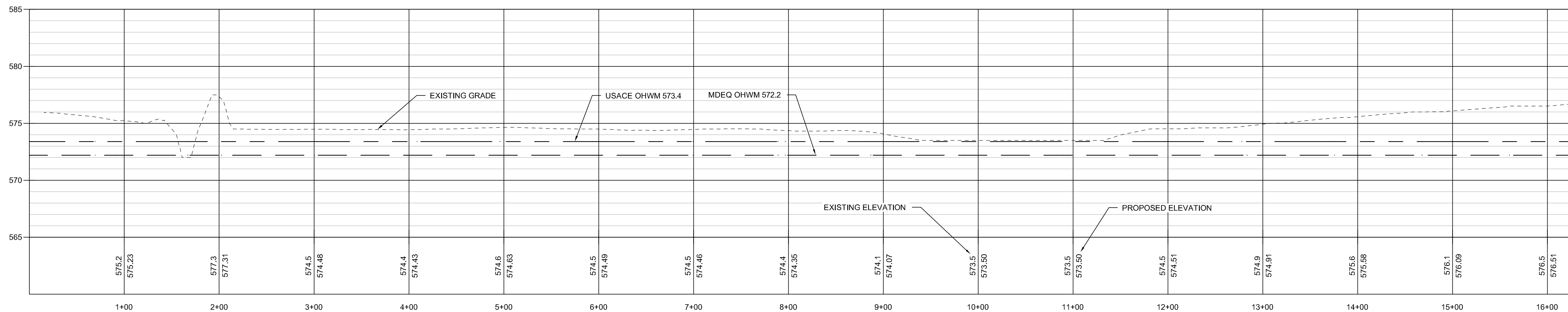
7/17/2012 11:15:06 AM - O:\PROJECTS\ANN ARBOR\N01278\200-01278-11007\CAD\SHEETFILES\C116 PROFILES.DWG - HOLLENBECK, TODD

F
E
D
C
B
A



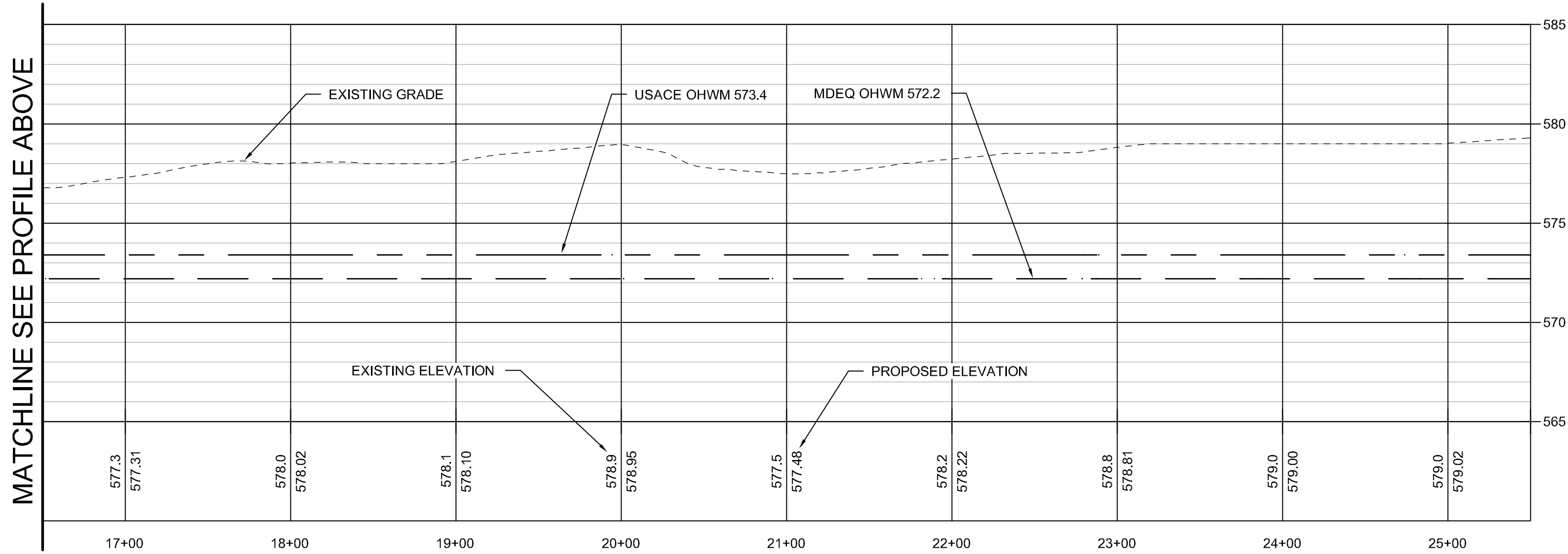
PROFILE F-F

SCALE: 1"=60' H 1"=6' V



PROFILE G-G

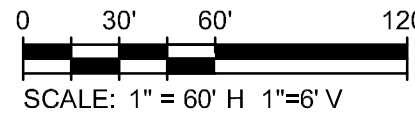
SCALE: 1"=60' H 1"=6' V



PROFILE G-G

SCALE: 1"=60' H 1"=6' V

- LEGEND
- AREA OF EXCAVATION
 - AREA OF UPLAND FILL
 - AREA OF WETLAND FILL



MATCHLINE SEE PROFILE BELOW

TETRA TECH
www.tetratech.com
710 AVIS DRIVE
ANN ARBOR, MI 48108
PHONE (734) 665-6000 FAX (734) 665-2570

MARK	DATE	DESCRIPTION	BY

DTE ENERGY COMPANY
MONROE TOWNSHIP, MONROE COUNTY, MICHIGAN
FERMI 3 OFFSITE MITIGATION AREA

**PROPOSED PROFILES -
PROFILE F-F, G-G**

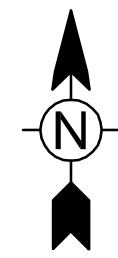
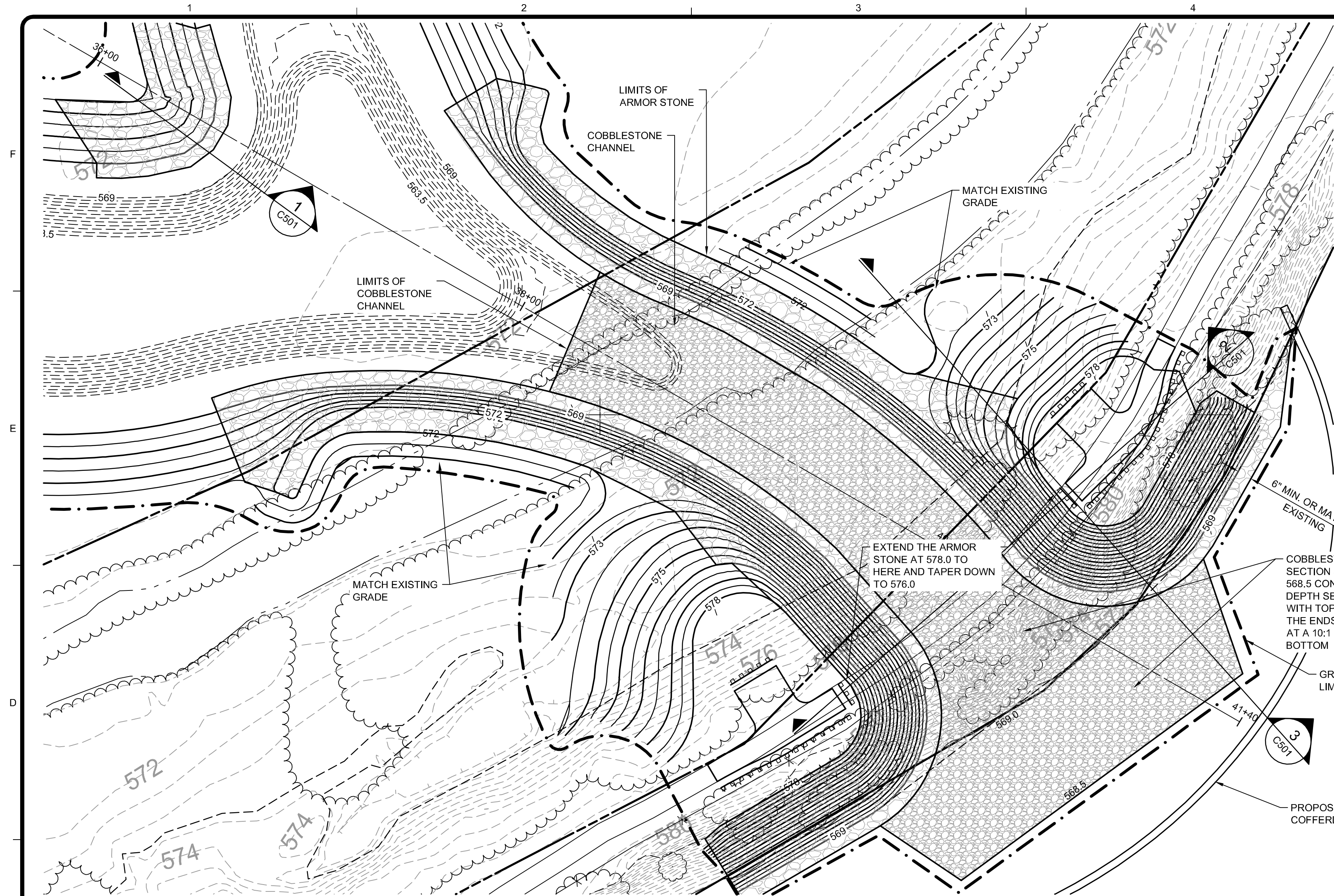
Project No.: 200-01278-11007
Designed By: J. SIWEK
Drawn By: T. HOLLENBECK
Checked By: N. MCPHERSON

C116

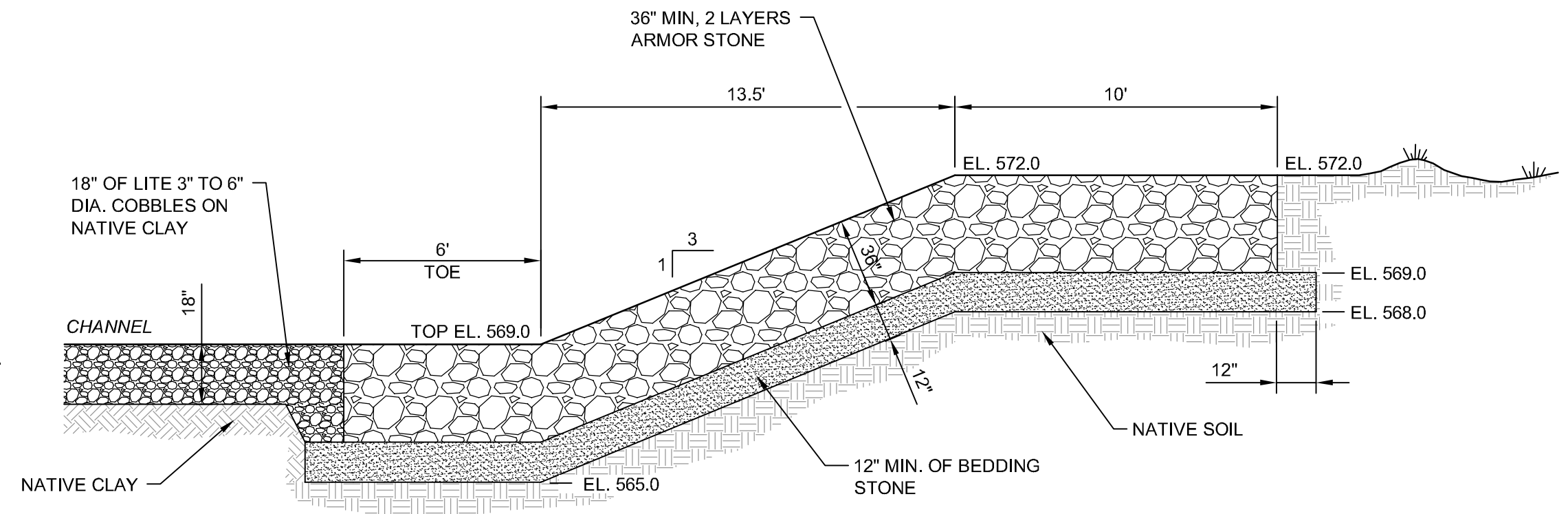
Copyright: Tetra Tech

Bar Measures 1 inch

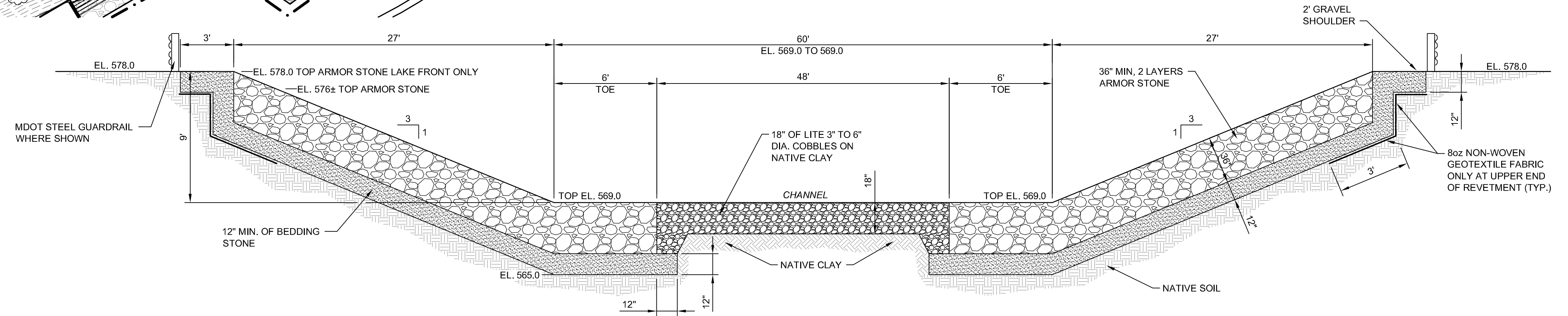
7/17/2012 2:06:01 PM - C:\PROJECTS\ANN ARBOR\RIER\01278\200-01278-11007\CAD\SHEETFILES\C501 DETAILS.DWG - HOLLENBECK, TODD



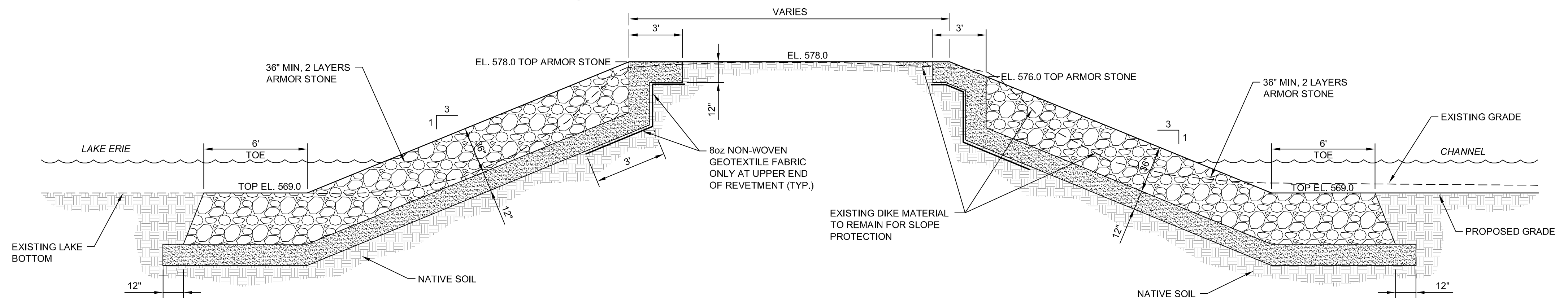
SITE PLAN - CHANNEL CUT
SCALE: 1"=20'



1 TYPICAL REVETMENT SECTION AT WETLAND ISLAND
C501 NO SCALE

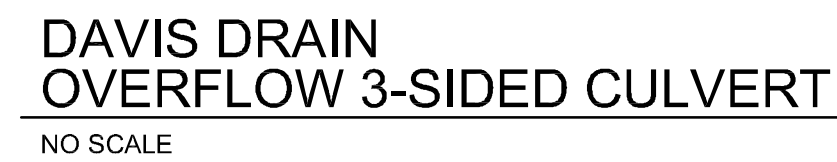


2 TYPICAL REVETMENT SECTION AT BERM CUT
C501 NO SCALE



3 TYPICAL REVETMENT SECTION AT BERM CUT
C501 NO SCALE

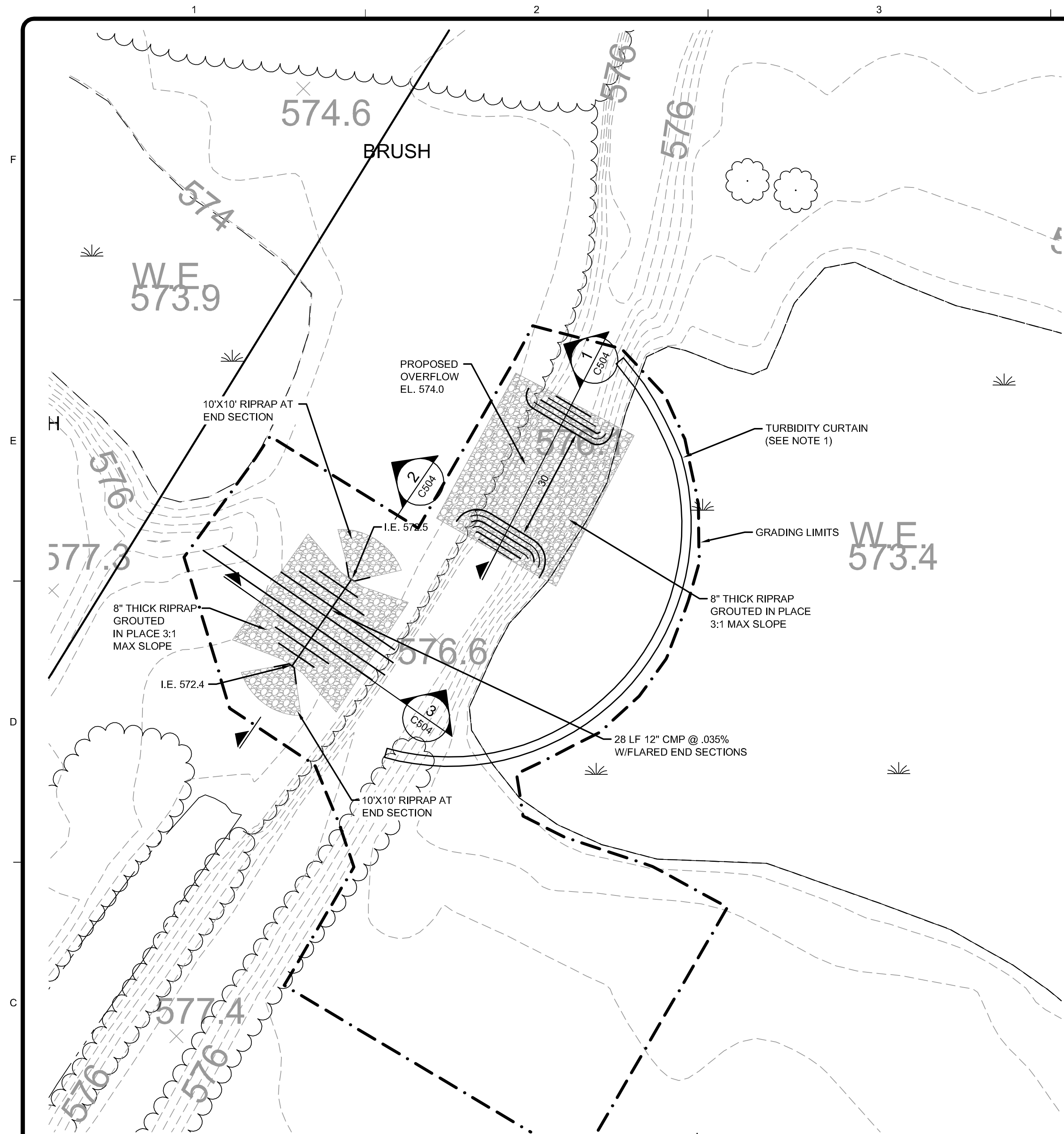
4. WORK MAY REQUIRE INSTALLATION OF A COFFERDAM AND DEWATERING. CONTRACTOR TO SUBMIT ON DESIGN AND ALIGNMENT OF PROPOSED COFFERDAM. DEWATERING OPERATIONS SHALL BE MAINTAINED UNTIL ALL GROUTED RIPRAP HAS COMPLETELY CURED.
5. EXISTING GRAVEL ROADWAY SHALL BE REMOVED AND RECONSTRUCTED A MINIMUM 20' (FEET) IN EACH DIRECTION AND SHALL TAPER FROM THE FULL WIDTH OF THE CULVERT TO MATCH THE EXISTING ROADWAY.
6. A 6" (INCH) THICK LAYER OF AGGREGATE SURFACE COURSE SHALL BE INSTALLED ACROSS THE ENTIRE WIDTH OF THE THREE-SIDED CULVERT.



Project No.:	200-01278-11007
Designed By:	J. SIWEK
Drawn By:	T. HOLLENBECK
Checked By:	H. MCPHERSON

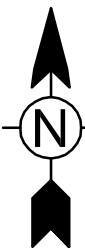
Bar Measures 1 inch

7/17/2012 11:26:21 AM - O:\PROJECTS\ANN ARBOR\IER01278\200-01278-11007\CAD\SHEETFILES\C501 DETAILS.DWG - HOLLENBECK, TODD



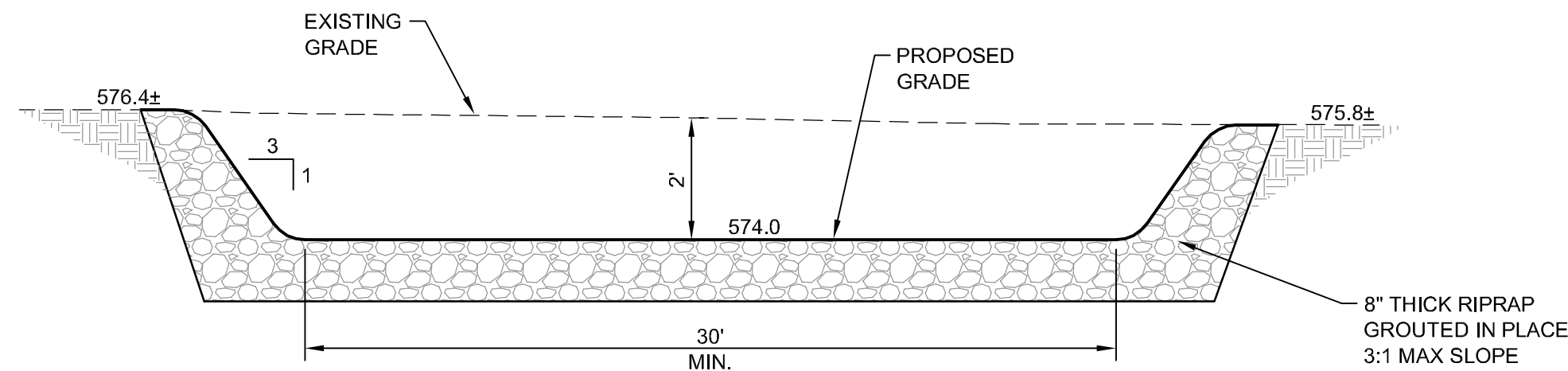
SITE PLAN -
DAVIS DRAIN MODIFICATIONS

SCALE: 1"=20'



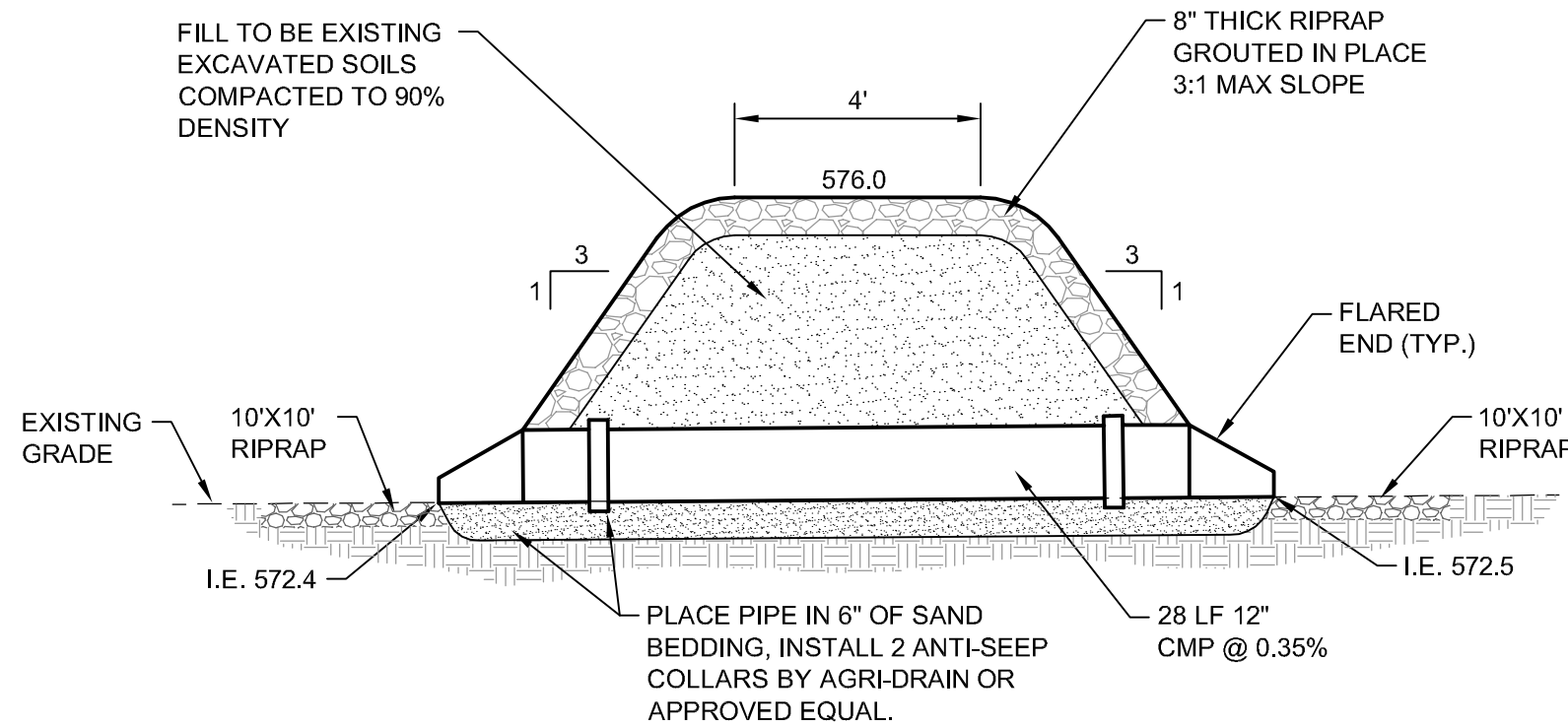
DAVIS DRAIN MODIFICATION NOTES

1. INSTALL TURBIDITY CURTAIN IN THE PRESENCE OF STANDING WATER. IF AREA IS DRY DURING CONSTRUCTION, SILT FENCE MAY BE USED.



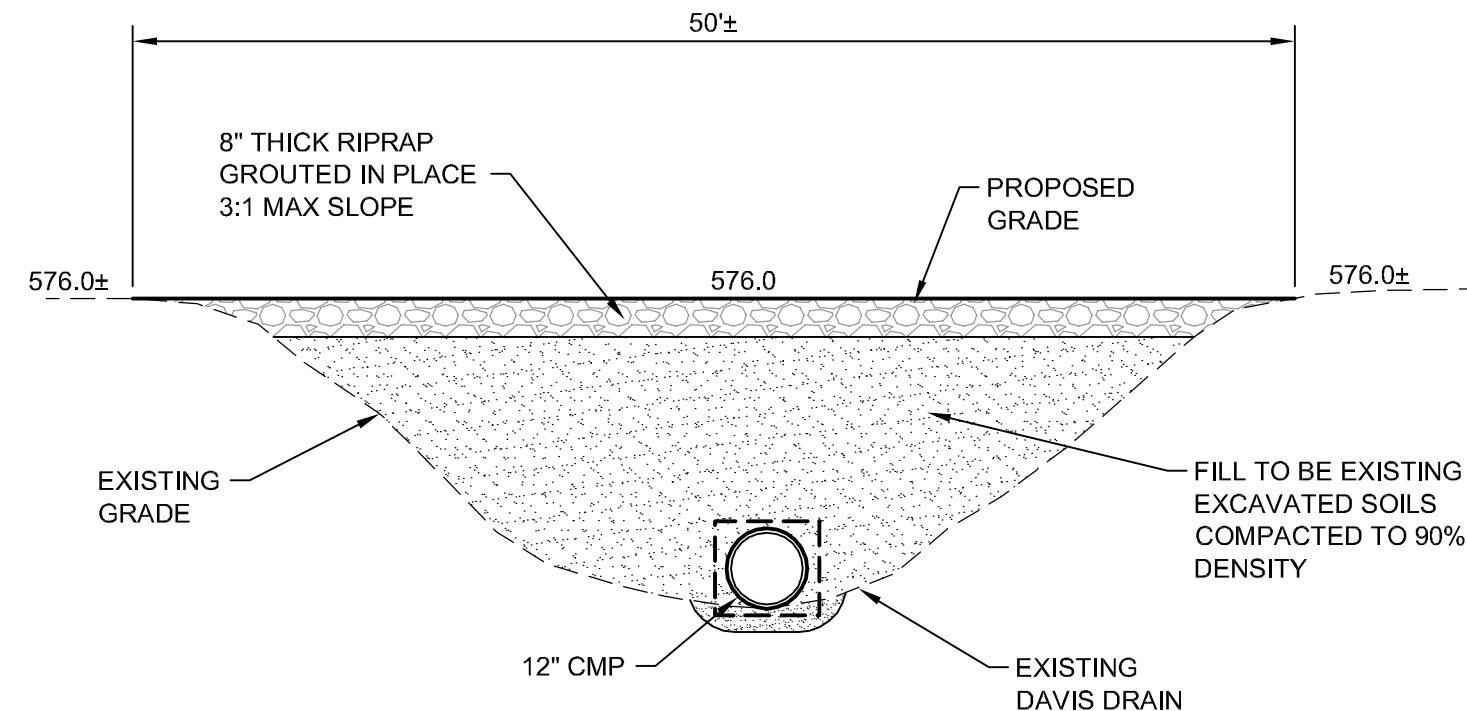
1 DAVIS DRAIN OVERFLOW TO SITE

C504 NO SCALE



2 DAVIS DRAIN LOW-FLOW CULVERT

C504 NO SCALE



3 DAVIS DRAIN LOW-FLOW CULVERT

C504 NO SCALE

NOTES

1. SEE SHEET C102 FOR SOIL EROSION.

DTE ENERGY COMPANY
MONROE TOWNSHIP, MONROE COUNTY, MICHIGAN
FERMI 3 OFFSITE MITIGATION AREA

DAVIS DRAIN OVERFLOW &
LOWFLOW CULVERT DETAILS

Project No.: 200-01278-11007
Designed By: J. SIWEK
Drawn By: T. HOLLENBECK
Checked By: N. MCPHERSON

C504

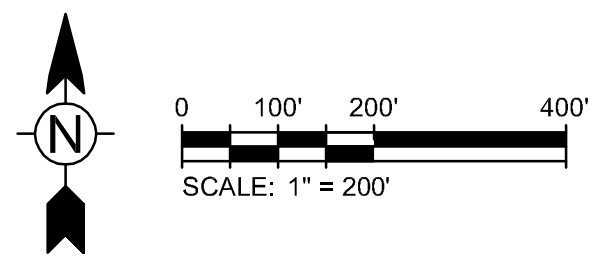
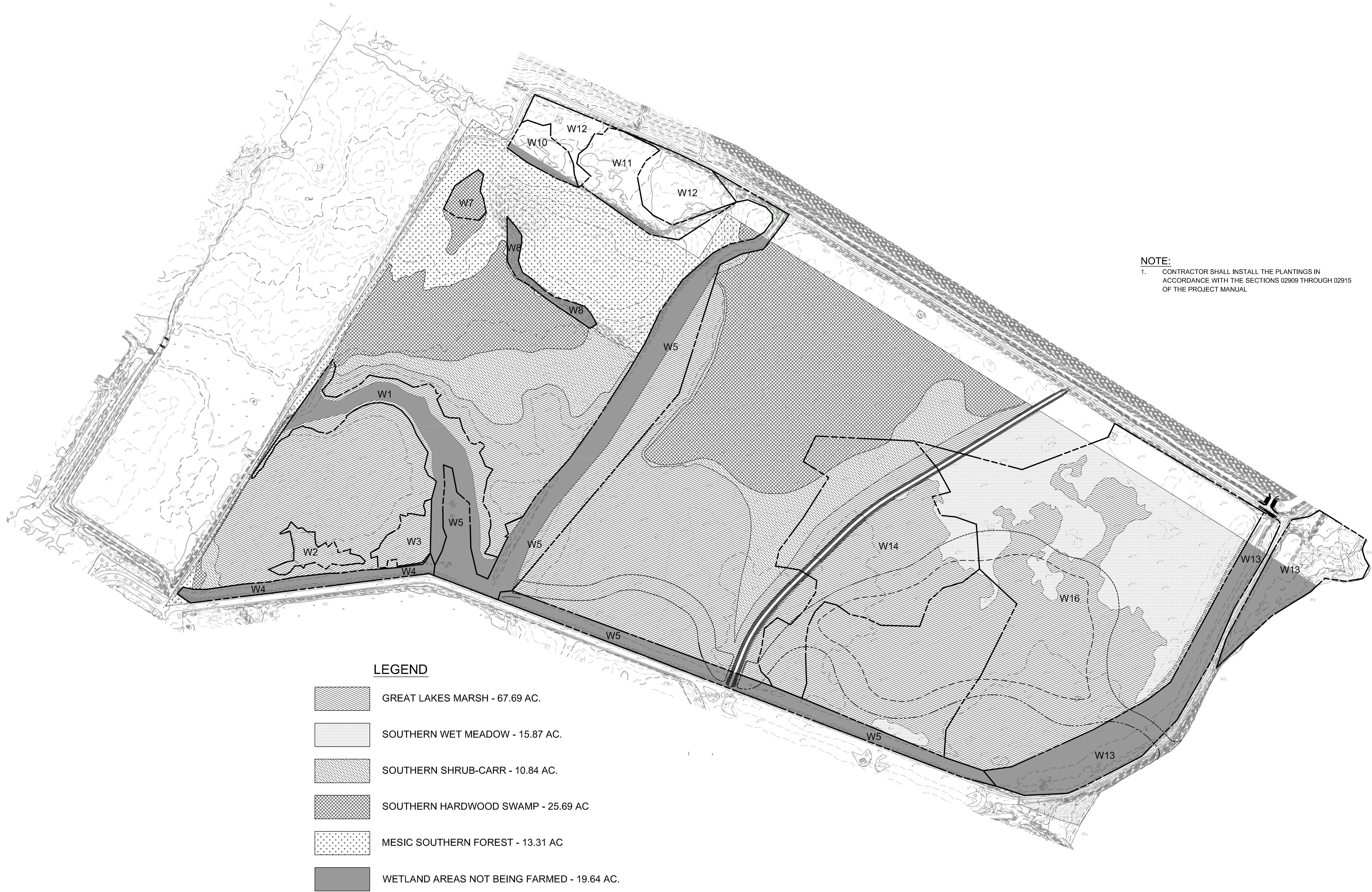
Bar Measures 1 inch



TETRA TECH

www.tetrattech.com
710 AVIS DRIVE
ANN ARBOR, MI 48108
PHONE (734) 665-6000 FAX (734) 665-2570

7/19/2012 3:18:11 PM - C:\PROJECTS\ANN ARBOR\IER01278\200-01278-11007\CAD\SHEET FILES\L101.DWG - HOLLENBECK, TODD



DTE ENERGY COMPANY
MONROE TOWNSHIP, MONROE COUNTY, MICHIGAN
FERMI 3 OFFSITE MITIGATION AREA

OVERALL PLANTING PLAN

Project No.: 200-01278-11007
Designed By: J. SIWEK
Drawn By: T. HOLLENBECK
Checked By: N. MCPHERSON

L101

Bar Measures 1 inch



www.tetratech.com
710 AVIS DRIVE
ANN ARBOR, MI 48108
PHONE (734) 665-6000 FAX (734) 665-2570

MARK	DATE	DESCRIPTION	BY