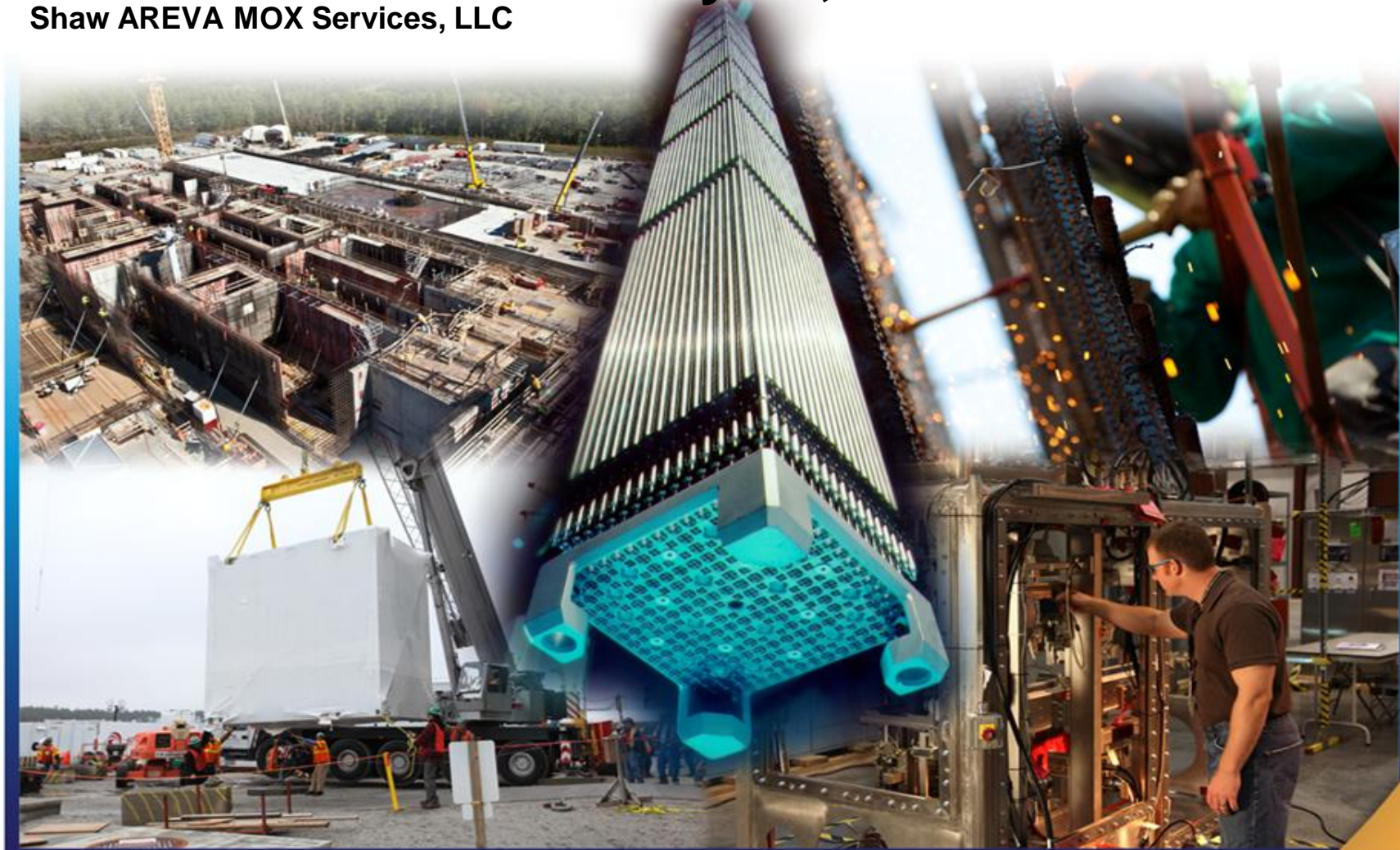


# MOX Update

July 24, 2012

Kelly Trice, President & COO  
Shaw AREVA MOX Services, LLC



*Protecting Future Generations. Powering the Future.*

# Design Capacity

- **The facility will be able to produce up to 70,000 fuel pellets per day**
- **The facility is being redesigned to produce both Pressure Water Reactor (PWR) and Boiling Water Reactor (BWR) fuel assemblies**
- **Approximately 151 PWR fuel assemblies can be produced annually**
  - Utilizing 70 metric tons of heavy metal
- **The facility will contain 7 Control Rooms**

# Safety & Environmental Performance

- **Safety performance remains excellent**
  - 19 million hours worked since start of construction
  - Voluntary Protection Program (VPP) - Awaiting OSHA VPP Star inspection in July 2012
  - Exceeded 10 million work hours without a lost time injury
  - Exceeded 800,000 work hours without an OSHA recordable injury
- **Environmental performance**
  - Over 50 active permits and no violations since construction start
  - Three support buildings designed for LEED Gold certification
  - Awarded SC Environmental Excellence Award

# Material Quantities Installed

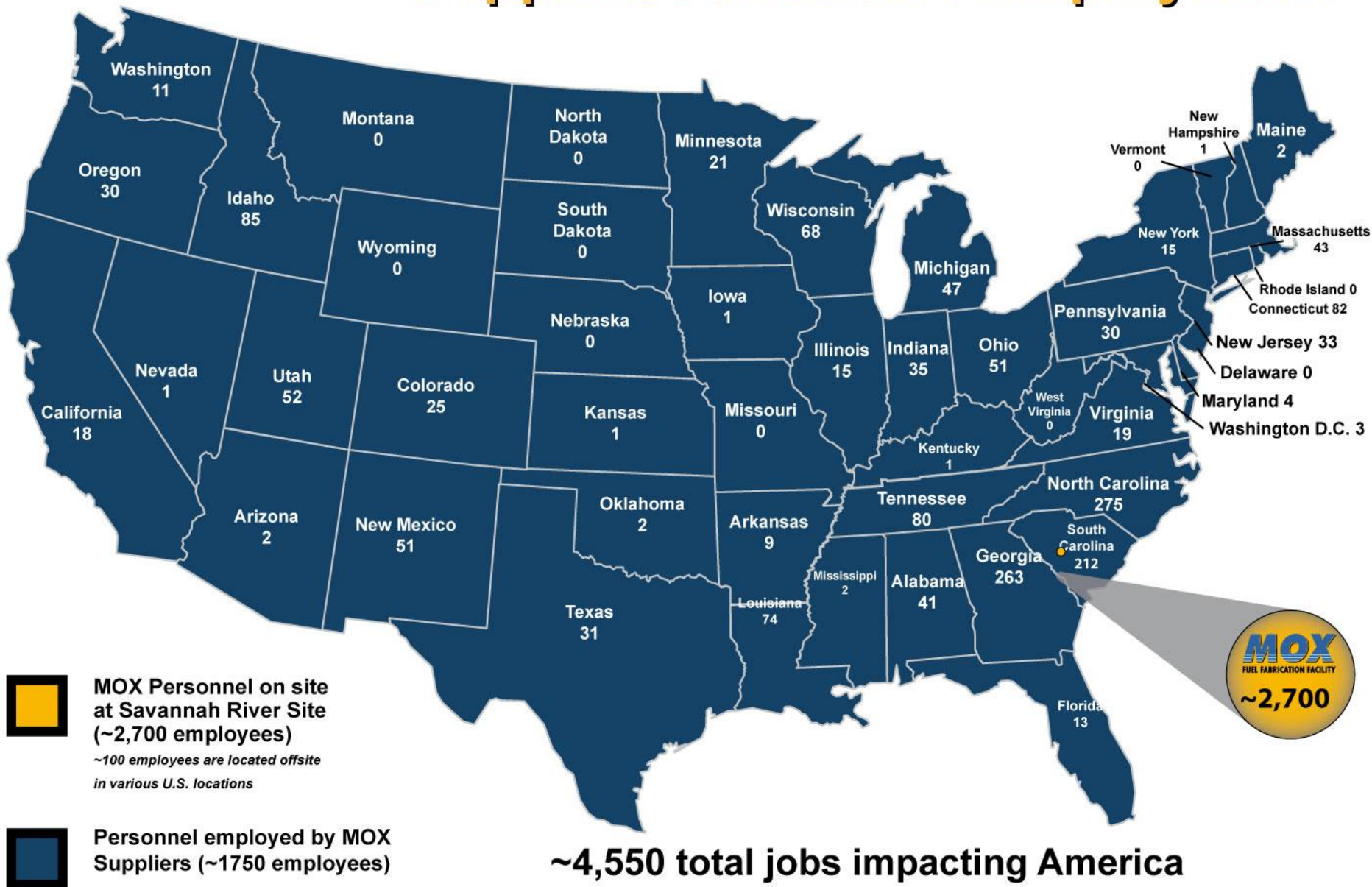
<b>Structural Concrete</b>	<b>119,600 cubic yards</b>
<b>Non-Structural Concrete</b>	<b>51,369 cubic yards</b>
<b>Rebar</b>	<b>&gt;19,800 tons (&gt;39,600,000 lbs.)</b>
<b>Process Pipe to be installed</b>	<b>~411,000 ft.</b>
<b>Tanks</b>	<b>69 of 74</b>
<b>Electrical Cable to be installed</b>	<b>~6 million ft.</b>
<b>Process Systems to be installed</b>	<b>294</b>

# Near Term Milestones

- **Complete BMP & BSR Roof Portion of MFFF** 12/2012
- **Install 5 Modules in Active Gallery** 9/2012
- **Complete Diesel Generator for Manufacturing** 3/2013
- **Install Main Transformers** 9/2012
- **Completed the Technical Support Building** 7/2012
- **Continue Installation of HVAC, Piping, Fire Systems and Conduit**
- **Begin Installation of Overhead Cranes**



# Total Impact of MOX Project & Supplier/Contractor Employment



# August 2007



Start of Construction



# June 2012





# Technical Support Building



# Active Gallery Modules Installation





# MFFF Overheads





# Process Unit Equipment and Gloveboxes



# Process Unit Equipment and Gloveboxes





# Process Unit Equipment and Gloveboxes





# Process Piping

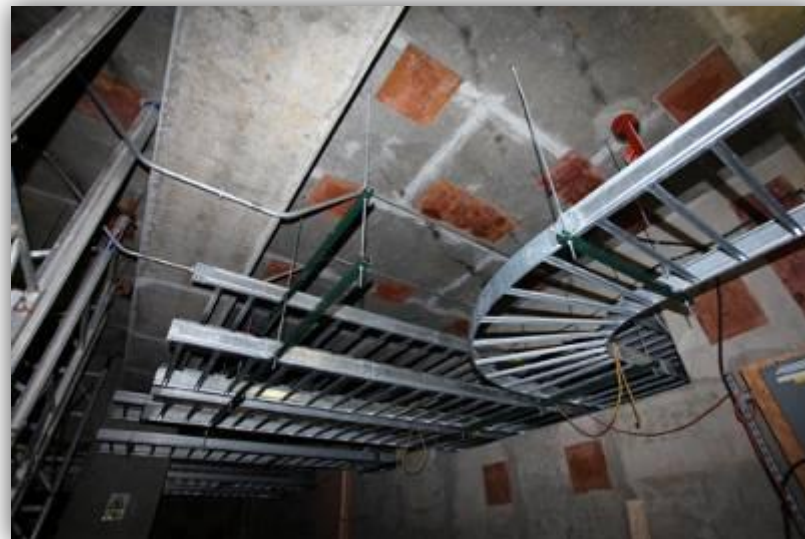


# HVAC Components



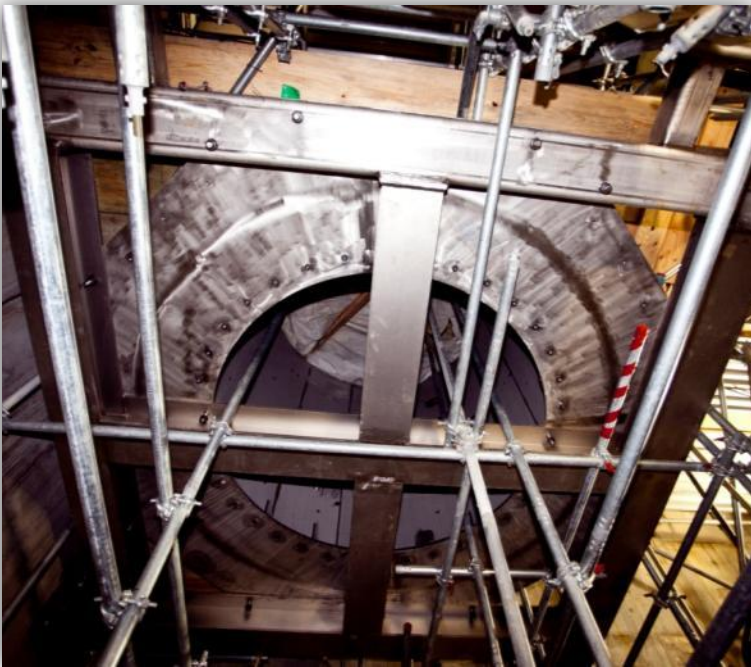


# Electrical Components





# Tanks in the MFFF



# Rod Storage



# Summary of Challenges / Lessons Learned

- **Since 2006, Several Issues Identified**
  - Rebar - vendor oversight related(enveloping under program or commercial grade dedication)
  - Stainless steel material verification
    - CCA not directly verified
  - Studs - vendor oversight related(3<sup>rd</sup> party action)
  - Couplers(2 examples) – vendor oversight of receipt documents(testing by non qualified source)
  - Critical Characteristics development and/or change without a fully documented evaluation
  - Work Package Development / Implementation