

Section I
Color Photographs and
Photograph Location Map

REPRESENTATIVE COLOR PHOTOGRAPHS
PPL Bell Bend Nuclear Power Plant
Salem Township, Luzerne County, Pennsylvania



Photo 1. Walker Run north of Market Street



Photo 3. Bank erosion on Walker Run immediately south of the
Market Street Bridge



Photo 2. Market Street Bridge over Walker Run

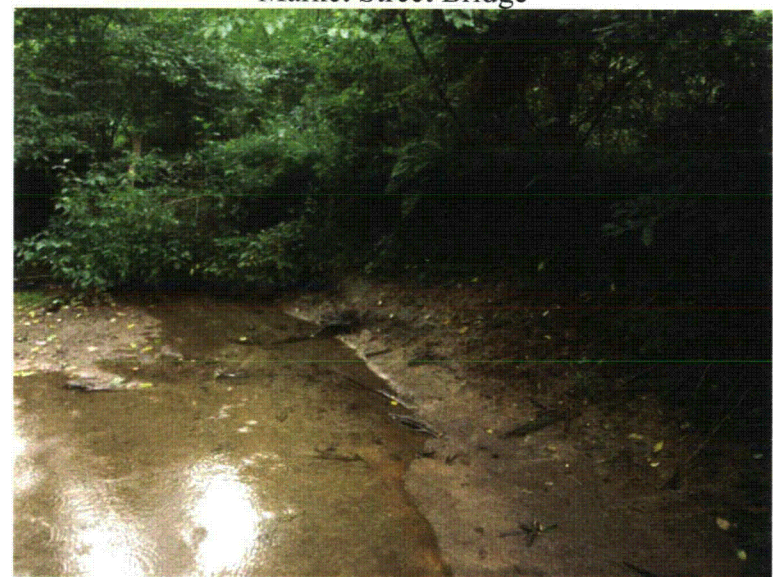


Photo 4. Severely eroded bank of Walker Run

REPRESENTATIVE COLOR PHOTOGRAPHS
PPL Bell Bend Nuclear Power Plant
Salem Township, Luzerne County, Pennsylvania



Photo 5. Sharp meander bend and eroding banks on Walker Run



Photo 7. Second Market Street Bridge, facing upstream.



Photo 6. Wetland on hillside east of Market Street and north of the second Market Street Bridge (proposed impact I).



Photo 8. High banks and disconnect from the floodplain on Walker Run.

REPRESENTATIVE COLOR PHOTOGRAPHS
PPL Bell Bend Nuclear Power Plant
Salem Township, Luzerne County, Pennsylvania



Photo 9. Walker Run upstream of proposed impact A.



Photo 11. Walker Run downstream of the access road bridge pre beaver dam removal



Photo 10. Location of proposed impact A - existing bridge over Walker Run



Photo 12. Walker Run downstream of the access road bridge post beaver dam removal

REPRESENTATIVE COLOR PHOTOGRAPHS
PPL Bell Bend Nuclear Power Plant
Salem Township, Luzerne County, Pennsylvania



Photo 13. Pond created on Walker Run pre beaver dam removal

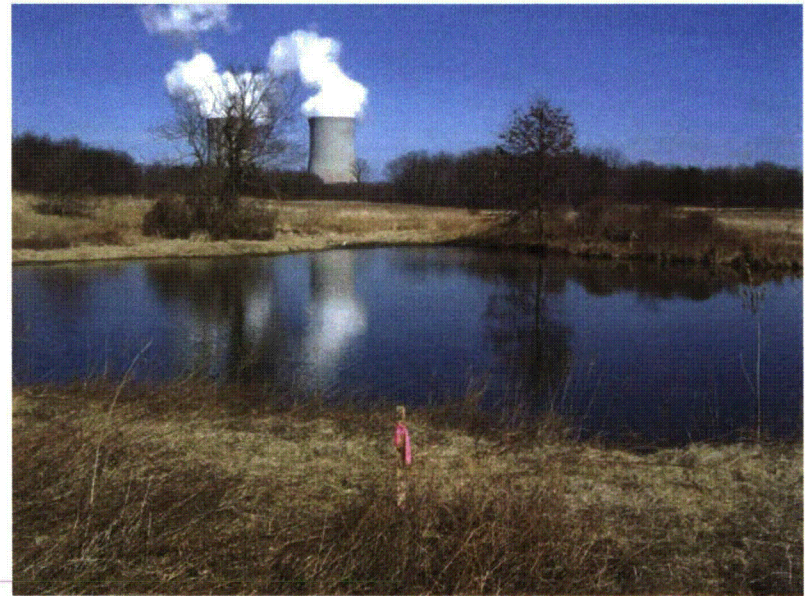


Photo 15. Farm pond



Photo 14. Walker Run post beaver dam removal near previous beaver pond.



Photo 16. Eroded banks on Walker Run downstream of the previously existing beaver dam

REPRESENTATIVE COLOR PHOTOGRAPHS
PPL Bell Bend Nuclear Power Plant
Salem Township, Luzerne County, Pennsylvania



Photo 17. Culvert beneath farm road on Walker Run



Photo 19. Walker Run straightened along valley wall



Photo 18. Meanders and high banks of Walker Run downstream of farm road



Photo 20. Downstream Market Street Bridge over Walker Run

REPRESENTATIVE COLOR PHOTOGRAPHS
PPL Bell Bend Nuclear Power Plant
Salem Township, Luzerne County, Pennsylvania



Photo 21. Upland area near Tributary 1



Photo 23. Upland area near Tributary 1.



Photo 22. View of wetland facing southwest towards the
Tributary 1



Photo 24. Tributary 1 pre beaver dam removal

REPRESENTATIVE COLOR PHOTOGRAPHS
PPL Bell Bend Nuclear Power Plant
Salem Township, Luzerne County, Pennsylvania



Photo 25. Tributary 1 post beaver dam removal during summer 2010.



Photo 27. Tributary 1 facing proposed impact B, pre beaver dam removal



Photo 26. Backwater on Tributary 1 pre beaver dam removal



Photo 28. View of the tear drop wetland (proposed impact P).

REPRESENTATIVE COLOR PHOTOGRAPHS

PPL Bell Bend Nuclear Power Plant
Salem Township, Luzerne County, Pennsylvania



Photo 29. View of tear drop wetland (proposed impact P)



Photo 31. Headcuts located within the teardrop wetland (proposed impact P).



Photo 30. View of tear drop wetland (proposed impact P)



Photo 32. View of tear drop wetland (proposed impact P)

REPRESENTATIVE COLOR PHOTOGRAPHS
PPL Bell Bend Nuclear Power Plant
Salem Township, Luzerne County, Pennsylvania



Photo 33. View of tear drop wetland (proposed impact P)



Photo 35. Wetland located north of bend in Confers Lane and south of Tributary 1



Photo 34. Wetland located north of bend in Confers Lane and south of Tributary 1



Photo 36. Wetland located north of bend in Confers Lane and south of Tributary 1

REPRESENTATIVE COLOR PHOTOGRAPHS

PPL Bell Bend Nuclear Power Plant
Salem Township, Luzerne County, Pennsylvania



Photo 37. View of wetlands adjacent to "Johnson Pond" south of Beach Grove Road



Photo 39. This wetland is located adjacent to the upper reaches of Tributary 1



Photo 38. This wetland is located adjacent to the upper reaches of Tributary 1



Photo 40. This wetland is located adjacent to the upper reaches of Tributary 1

REPRESENTATIVE COLOR PHOTOGRAPHS
PPL Bell Bend Nuclear Power Plant
Salem Township, Luzerne County, Pennsylvania



Photo 41. This wetland is located adjacent to the upper reaches of Tributary 1



Photo 43. This wetland is located adjacent to the upper reaches of Tributary 1 near proposed impact Q



Photo 42. This wetland is located adjacent to the upper reaches of Tributary 1



Photo 44. This wetland is located adjacent to the upper reaches of Tributary 1 near proposed impact Q

REPRESENTATIVE COLOR PHOTOGRAPHS

PPL Bell Bend Nuclear Power Plant
Salem Township, Luzerne County, Pennsylvania



Photo 45. The "Beaver Pond" located on Tributary 1 pre dam removal

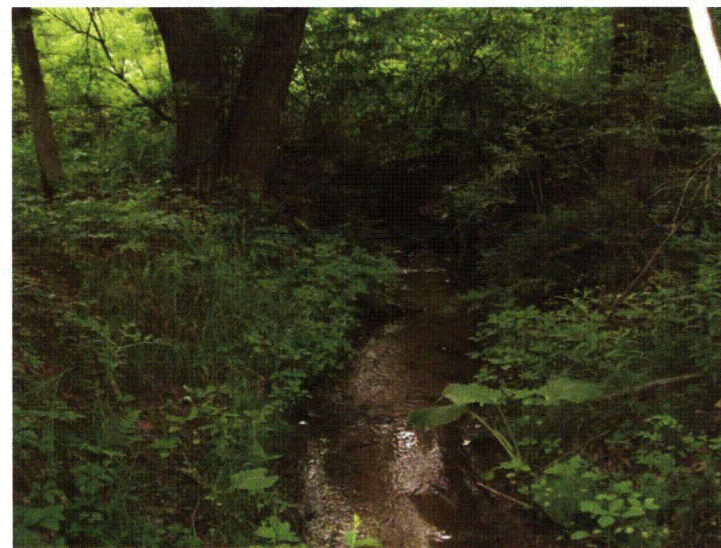


Photo 46. Tributary 1 and adjacent wetlands near proposed impacts D and E



Photo 45a. The "Beaver Pond" post dam removal and culvert replacement



Photo 47. Edge of wetland boundary along Tributary 1 near proposed impact E

REPRESENTATIVE COLOR PHOTOGRAPHS
PPL Bell Bend Nuclear Power Plant
Salem Township, Luzerne County, Pennsylvania



Photo 48. Wetland located adjacent to Tributary 1 near proposed impact E



Photo 50. Wetland located adjacent to Tributary 1 near proposed impact E



Photo 49. Wetland located adjacent to Tributary 1 near proposed impact E



Photo 51. Wetland located adjacent to Tributary 1 near proposed impact E

REPRESENTATIVE COLOR PHOTOGRAPHS

PPL Bell Bend Nuclear Power Plant
Salem Township, Luzerne County, Pennsylvania



Photo 52. Edge of wetland adjacent to the unnamed tributary near proposed impact E



Photo 54. Wetland located east of Confers Lane and considered hydrologically connected to Walker Run



Photo 53. Wetland located east of Confers Lane and considered hydrologically connected to Walker Run



Photo 55. Isolated wetland located east of Confers Lane (near proposed impact R)

REPRESENTATIVE COLOR PHOTOGRAPHS

PPL Bell Bend Nuclear Power Plant
Salem Township, Luzerne County, Pennsylvania



Photo 56. Isolated wetland located east of Confers Lane
(near proposed impact R)



Photo 58. View of open water area within isolated wetland east
of Confers Lane



Photo 57. Isolated wetland located east of Confers Lane –
wetland boundary



Photo 59. Isolated wetland located east of Confers Lane

REPRESENTATIVE COLOR PHOTOGRAPHS
PPL Bell Bend Nuclear Power Plant
Salem Township, Luzerne County, Pennsylvania



Photo 60. View of wetlands near the unnamed tributary to Lake Took-A-While



Photo 62. View of wetlands near the unnamed tributary to Lake Took-A-While



Photo 61. View of wetlands near the unnamed tributary to Lake Took-A-While



Photo 63. View of wetlands near the unnamed tributary to Lake Took-A-While

REPRESENTATIVE COLOR PHOTOGRAPHS

PPL Bell Bend Nuclear Power Plant
Salem Township, Luzerne County, Pennsylvania



Photo 64. View of wetlands adjacent to intermittent portion of the unnamed tributary to Lake Took-A-While



Photo 66. View of North Branch Canal outfall channel. Carries flow from the canal system to the Susquehanna River (proposed impact K)



Photo 65. View of wetland at proposed impact K



Photo 67. View of North Branch Canal outfall channel. (proposed impact K)

REPRESENTATIVE COLOR PHOTOGRAPHS

PPL Bell Bend Nuclear Power Plant
Salem Township, Luzerne County, Pennsylvania



Photo 68. View of North Branch Canal outfall channel looking upstream from the Susquehanna River confluence (proposed impact K)



Photo 70. View of canal and wetland located north of Lake Took-A-While and between Rt. 11 and the Susquehanna River



Photo 69. View of wetland at proposed impact K



Photo 71. View of wetland located north of Lake Took-A-While and between Rt. 11 and the Susquehanna River

REPRESENTATIVE COLOR PHOTOGRAPHS
PPL Bell Bend Nuclear Power Plant
Salem Township, Luzerne County, Pennsylvania



Photo 72. View of wetland located north of Lake Took-A-While and between Rt. 11 and the Susquehanna River



Photo 74. View of wetland located north of Lake Took-A-While and between Rt. 11 and the Susquehanna River



Photo 73. View of wetland located north of Lake Took-A-While and between Rt. 11 and the Susquehanna River



Photo 75. Wetland located in the Riverlands along the northernmost section of the BBNPP property boundary

REPRESENTATIVE COLOR PHOTOGRAPHS

PPL Bell Bend Nuclear Power Plant
Salem Township, Luzerne County, Pennsylvania



Photo 76. Wetland located in northern Riverlands along the northern-most section of the BBNPP property boundary



Photo 77. Wetland located in northern Riverlands along the eastern boundary of the property boundary



Photo 78. Wetlands located in southeastern area of the BBNPP project boundary

REPRESENTATIVE COLOR PHOTOGRAPHS

PPL Bell Bend Nuclear Power Plant
Salem Township, Luzerne County, Pennsylvania



Photo 79. Wetlands located in the southeastern area of the BBNPP project boundary



Photo 81. Wetland located at proposed wetland impact J



Photo 80. Wetland located at proposed wetland impact J



Photo 82. Culvert outlet of wetland in photo 81

REPRESENTATIVE COLOR PHOTOGRAPHS

PPL Bell Bend Nuclear Power Plant
Salem Township, Luzerne County, Pennsylvania



Photo 83. Wetland located adjacent to proposed wetland impact J.



Photo 85. Proposed wetland impact area M, within Riverlands.



Photo 84. Wetlands under transmission line



Photo 86. Proposed wetland impact area M, within Riverlands

REPRESENTATIVE COLOR PHOTOGRAPHS
PPL Bell Bend Nuclear Power Plant
Salem Township, Luzerne County, Pennsylvania



Photo 87. Tributary 2 near proposed impact C



Photo 89. Facing the beginning of the "Beaver Pond" backwater
(proposed impact Q)



Photo 88. Tributary 1 upstream of the "Beaver Pond"
(proposed impact Q)



Photo 90. Downstream of the "Beaver Pond"
(proposed impact Q)

REPRESENTATIVE COLOR PHOTOGRAPHS

PPL Bell Bend Nuclear Power Plant
Salem Township, Luzerne County, Pennsylvania



Photo 91. Stormwater basin east of Tributary 1.



Photo 93. Forested wetland near proposed impact F south of
Confers Lane



Photo 92. Narrow drainage channel east of Confers Lane

