

## Transducer Photos

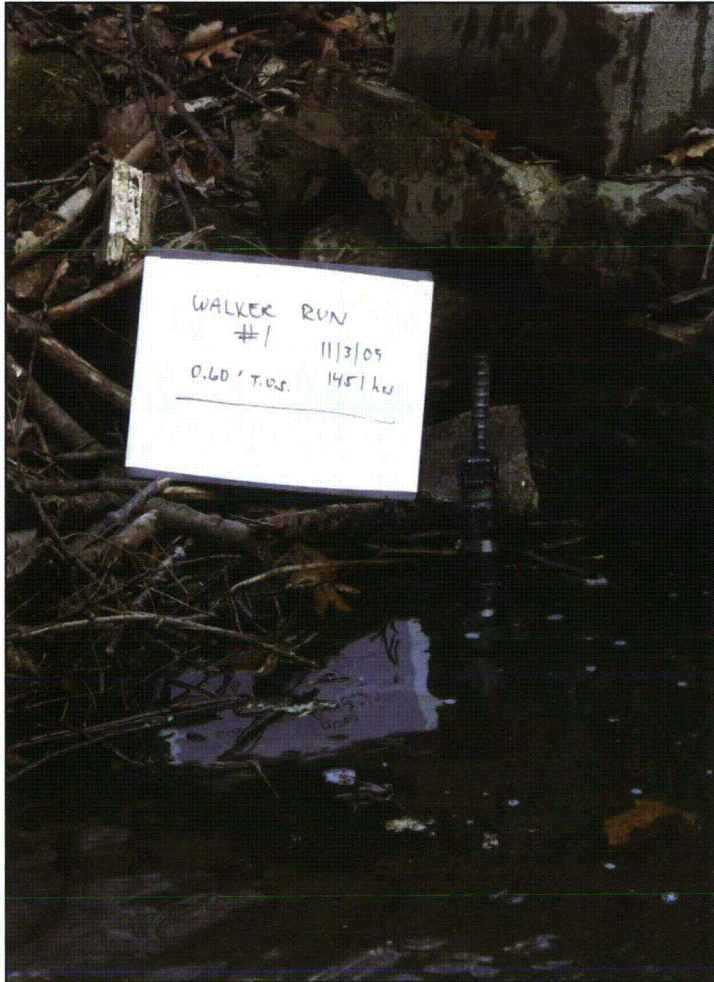


Photo 1. Site 1 Walker Run



Photo 2. Site 1 Walker Run



## Transducer Photos



Photo 3. Site 1 Walker Run

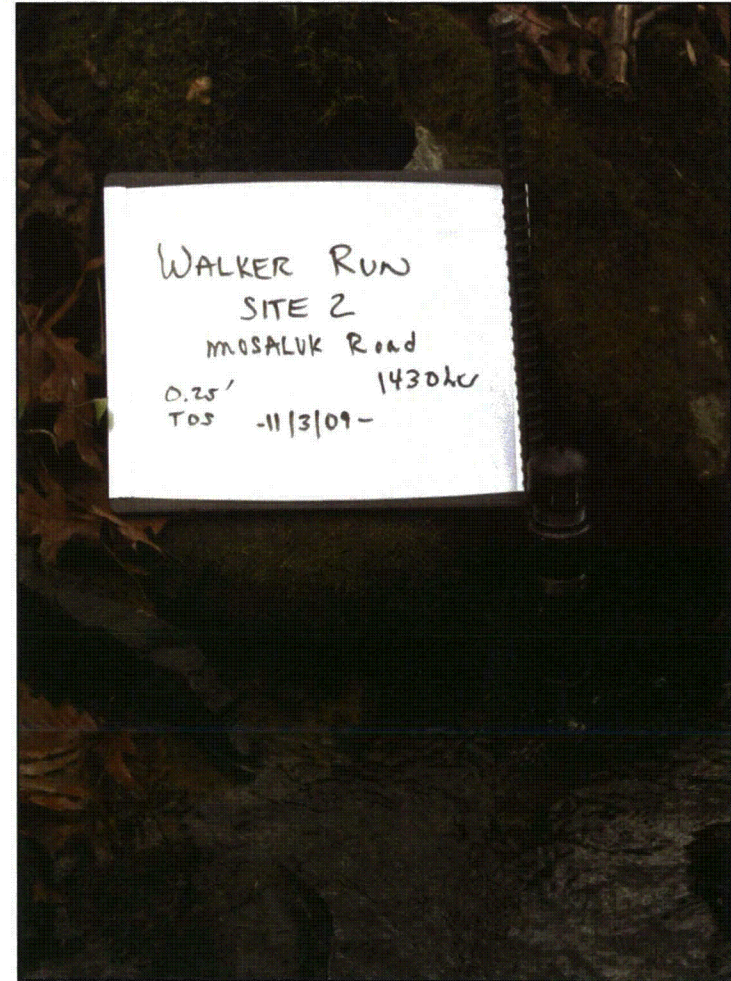


Photo 4. Site 2 Walker Run



## Transducer Photos



Photo 5. Site 2 Walker Run



Photo 6. Site 2 Walker Run



## Transducer Photos

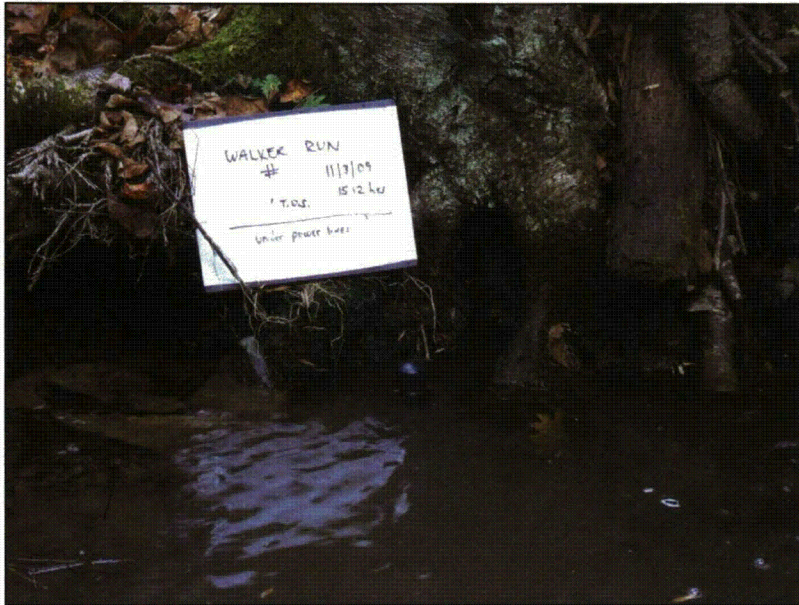


Photo 7. Site 3 Walker Run



Photo 8. Site 3 Walker Run



Photo 9. Site 3 Walker Run



## Transducer Photos

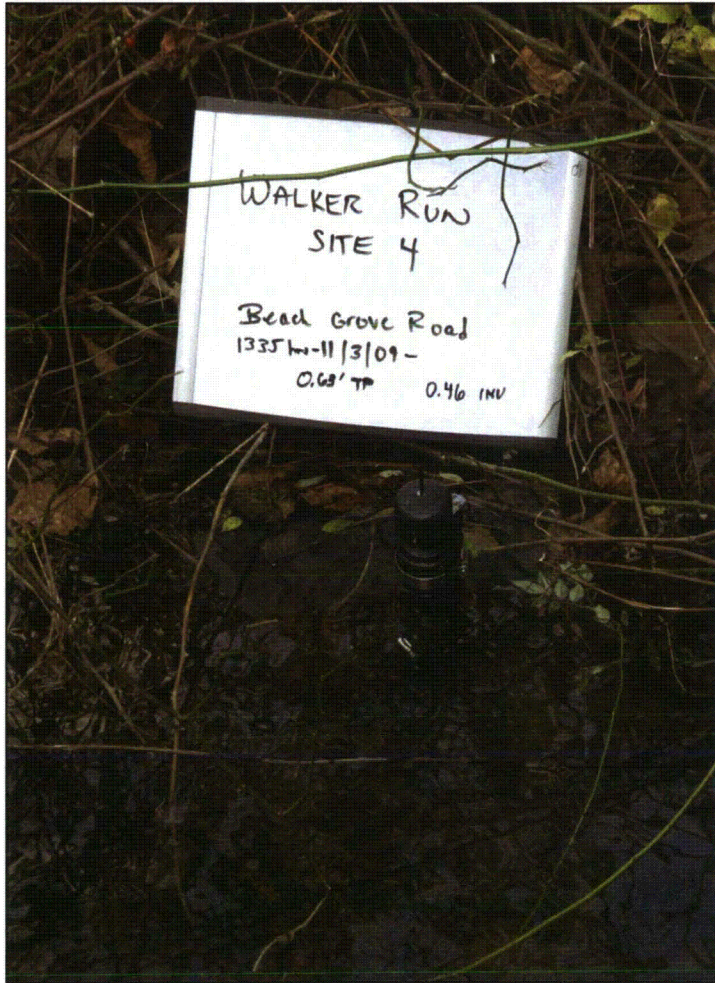


Photo 10. Site 4 Walker Run



Photo 11. Site 4 Walker Run



Photo 12. Site 4 Walker Run



## Transducer Photos

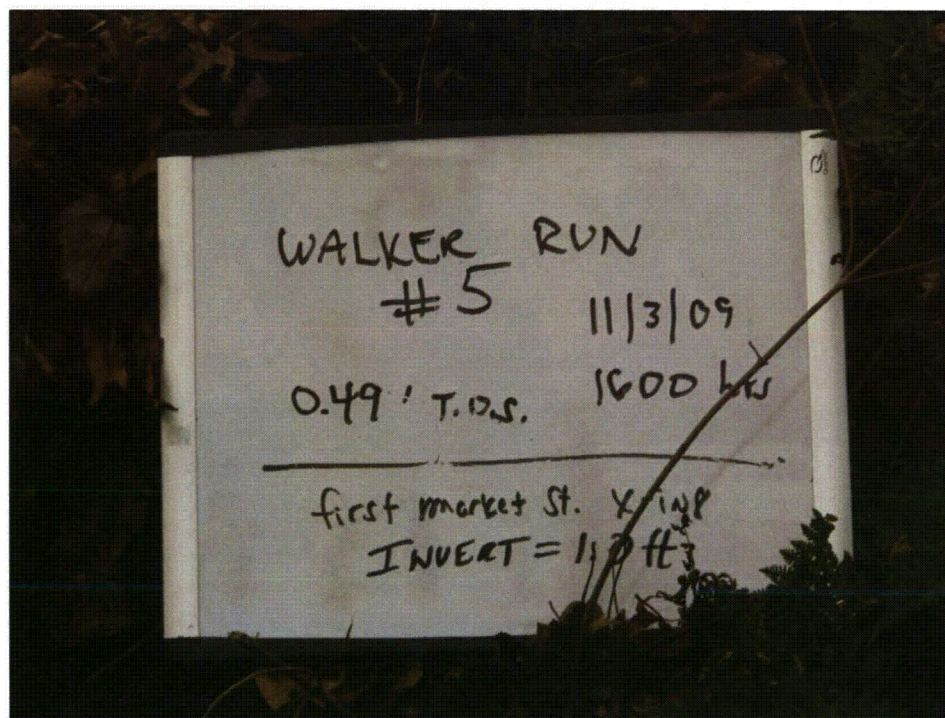


Photo 13. Site 5 Walker Run



Photo 14. Site 5 Walker Run



## Transducer Photos



Photo 15. Site 5 Walker Run



Photo 16. Site 5 Walker Run



Photo 17. Site 5 Walker Run



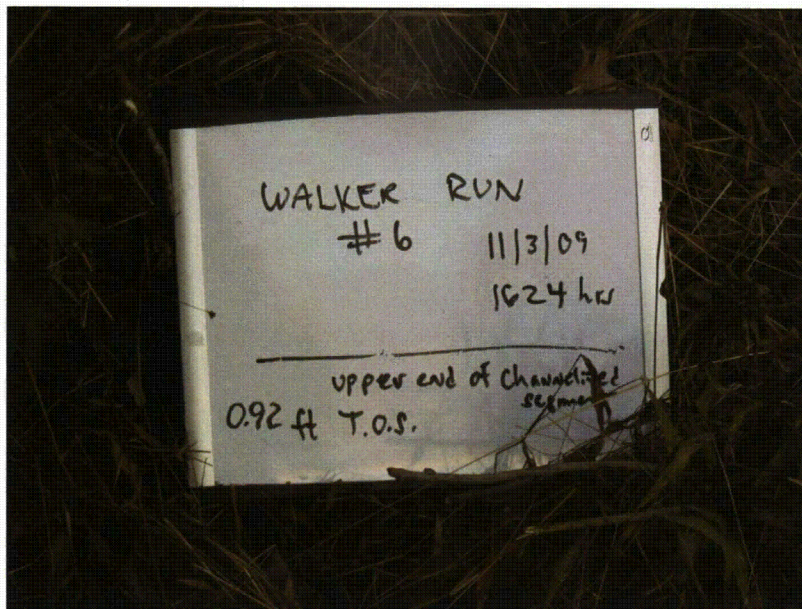


Photo 18. Site 6 Walker Run



Photo 19. Site 6 Walker Run

## Transducer Photos

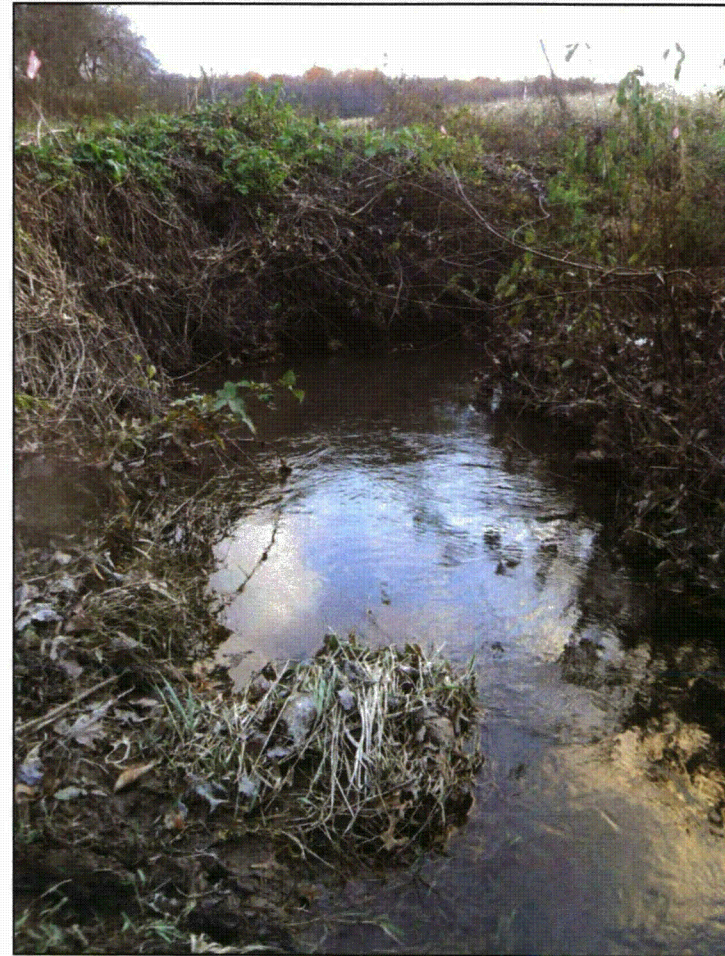


Photo 20. Site 6 Walker Run



## Transducer Photos

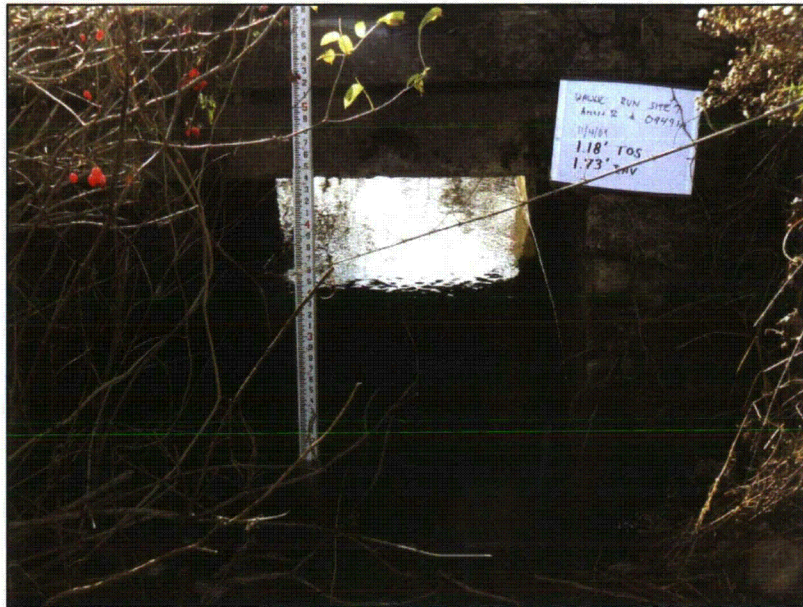


Photo 21. Site 7 Walker Run



Photo 22. Site 7 Walker Run

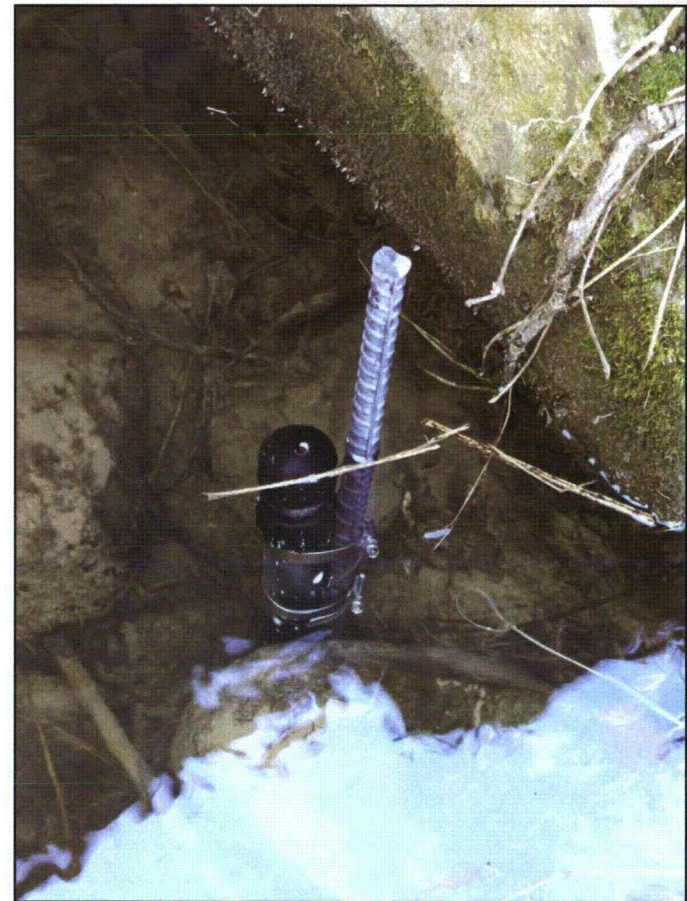


Photo 23. Site 7 Walker Run



## Transducer Photos



Photo 24. Site 8 Walker Run



Photo 25. Site 8 Walker Run

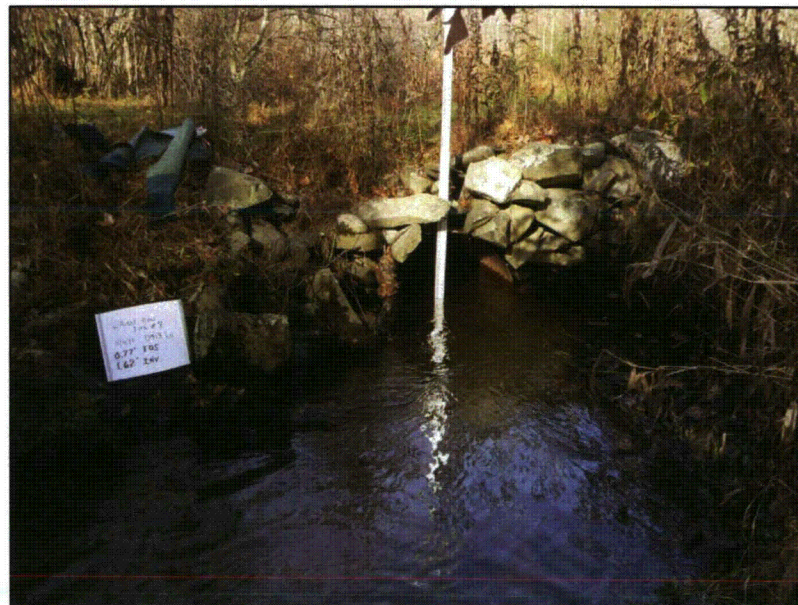


Photo 26. Site 8 Walker Run



## Transducer Photos

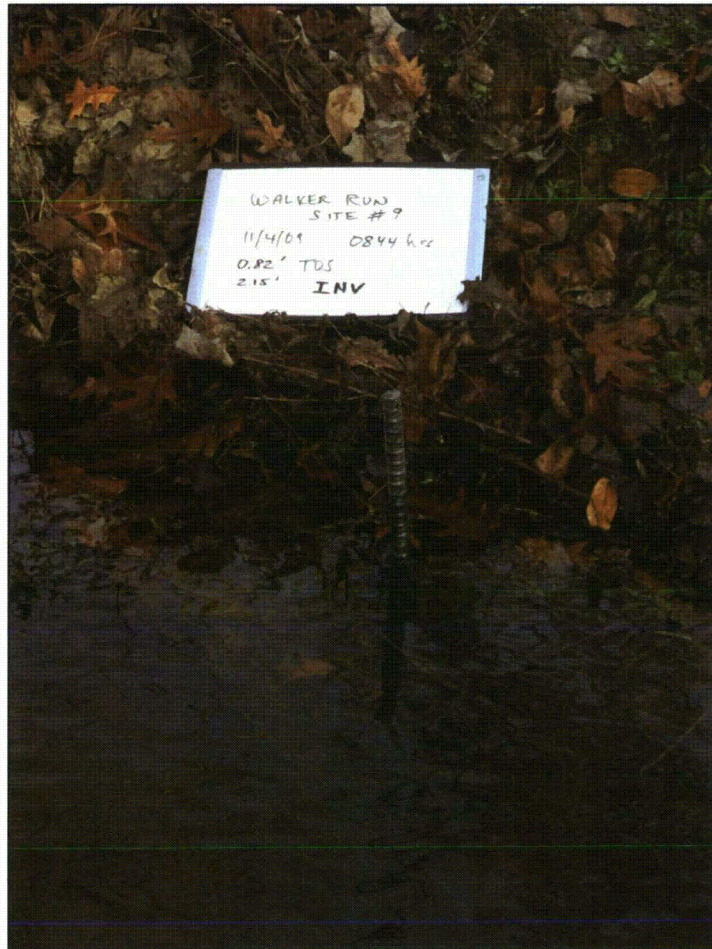


Photo 27. Site 9 Walker Run



Photo 28. Site 9 Walker Run



Photo 29. Site 9 Walker Run



## Transducer Photos

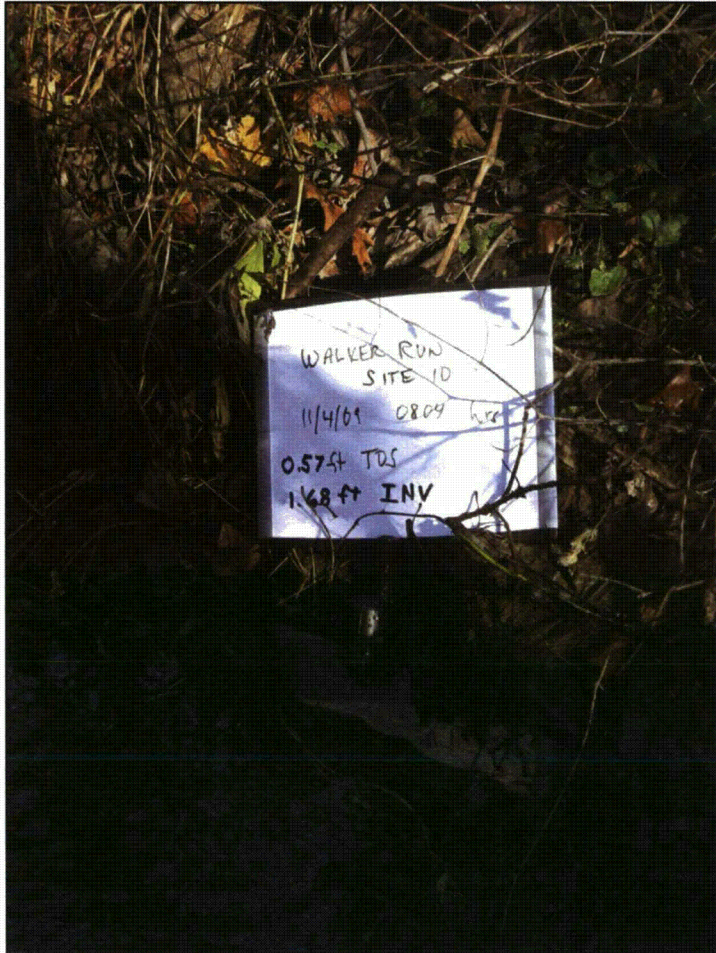


Photo 30. Site 10 Walker Run



Photo 31. Site 10 Walker Run



Photo 32. Site 10 Walker Run



## Transducer Photos

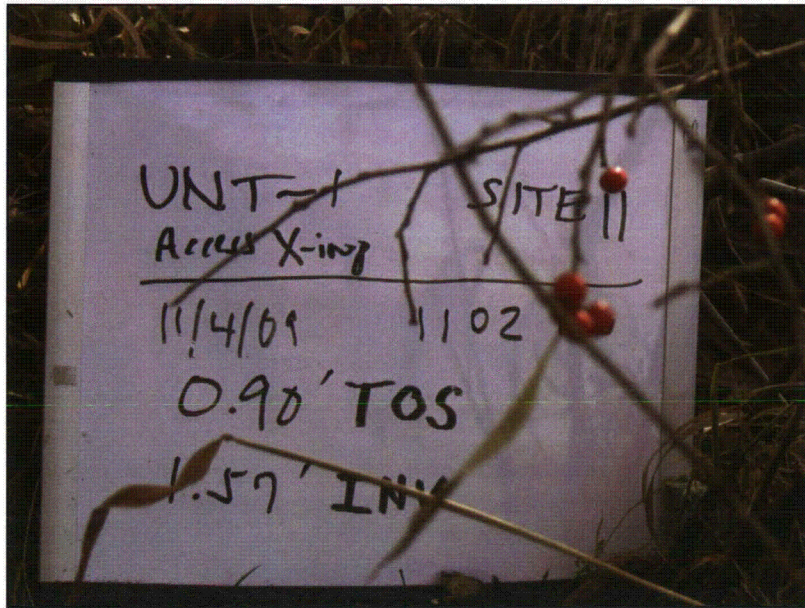


Photo 33. Site 11 Unnamed Tributary 1



Photo 34. Site 11 Unnamed Tributary 1



Photo 35. Site 11 Unnamed Tributary 1



## Transducer Photos



Photo 36. Site 11 Unnamed Tributary 1

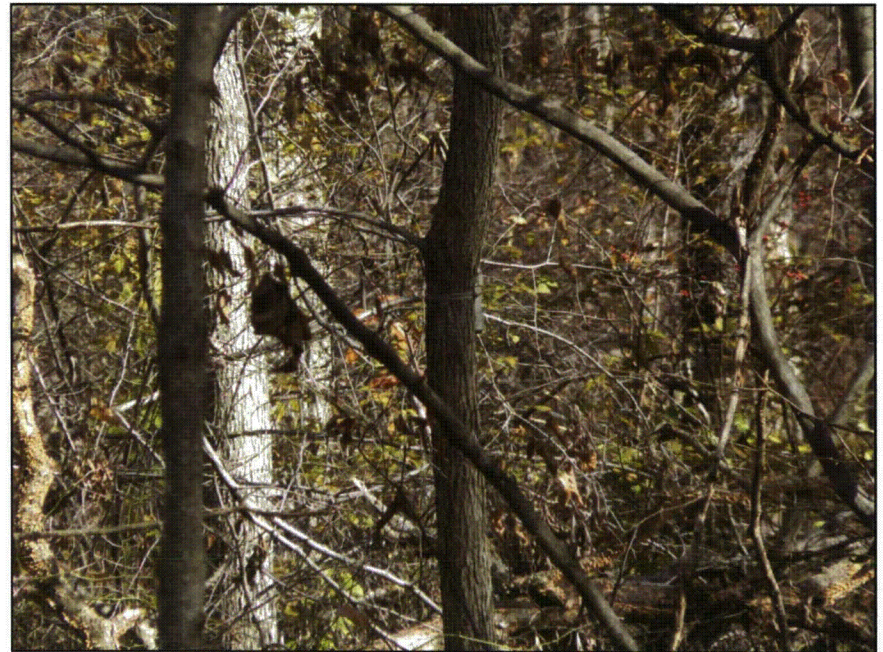


Photo 37. Site 11 Unnamed Tributary 1 - Baralogger



## Transducer Photos

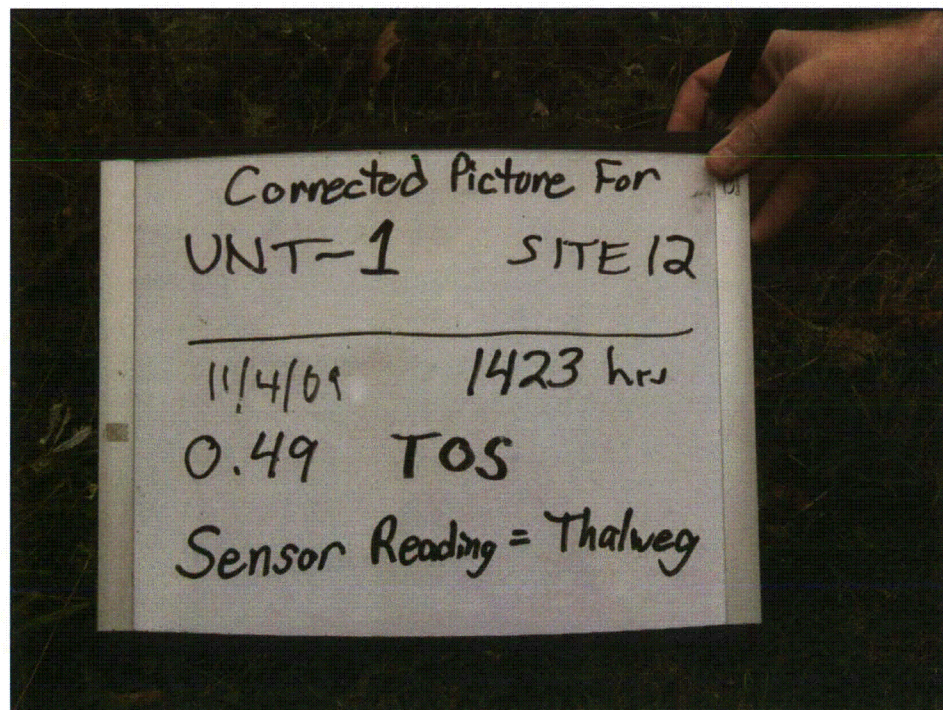


Photo 38. Site 12 Unnamed Tributary 1

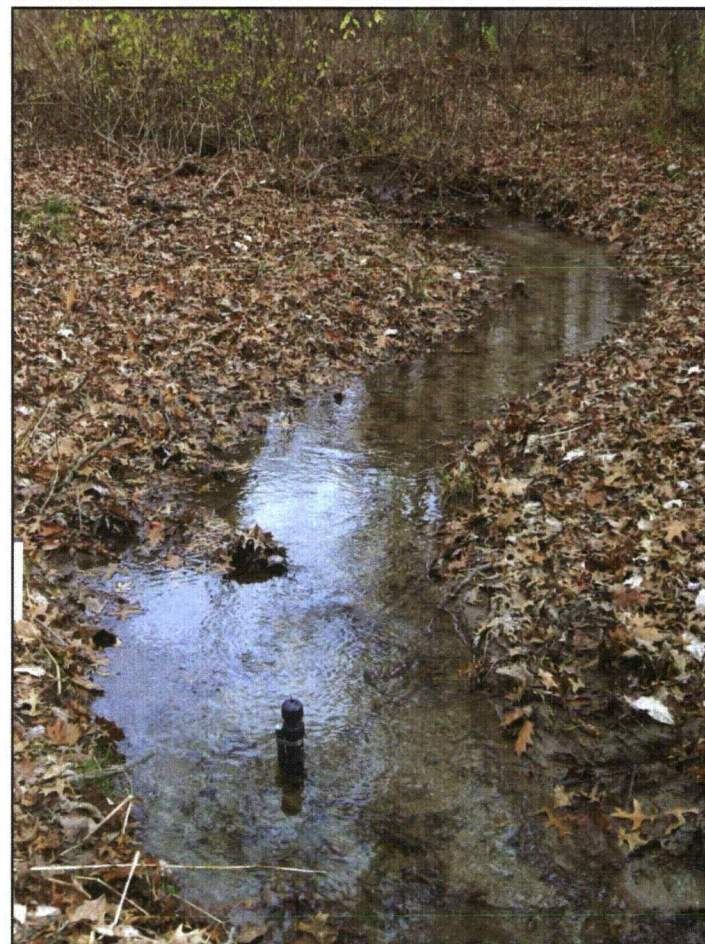


Photo 39. Site 12 Unnamed Tributary 1



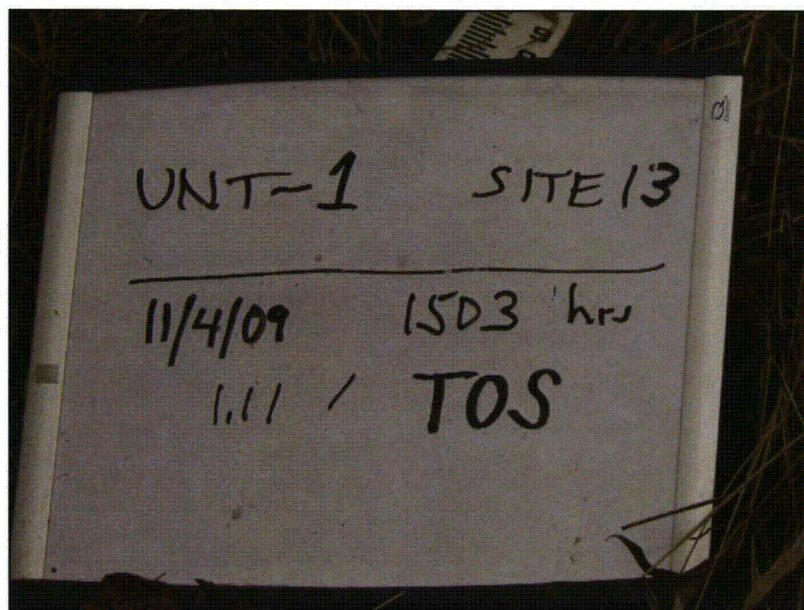


Photo 40. Site 13 Unnamed Tributary 1



Photo 41. Site 13 Unnamed Tributary 1

## Transducer Photos



Photo 42. Site 13 Unnamed Tributary 1



## Transducer Photos



Photo 43. Site 14 Unnamed Tributary 1



Photo 44. Site 14 Unnamed Tributary 1





Photo 49. Site 15 Unnamed Tributary 2, Lower

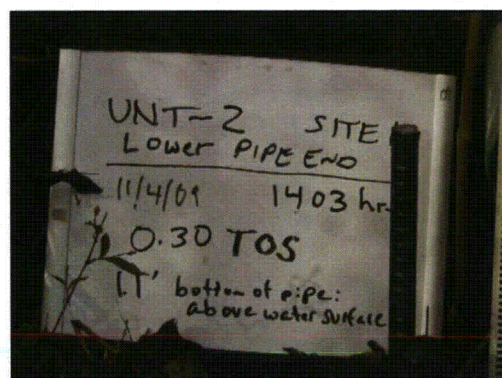


Photo 51. Site 15 Unnamed tributary 2, Lower

## Transducer Photos



Photo 50. Site 15 Unnamed Tributary 2, Lower



## Transducer Photos

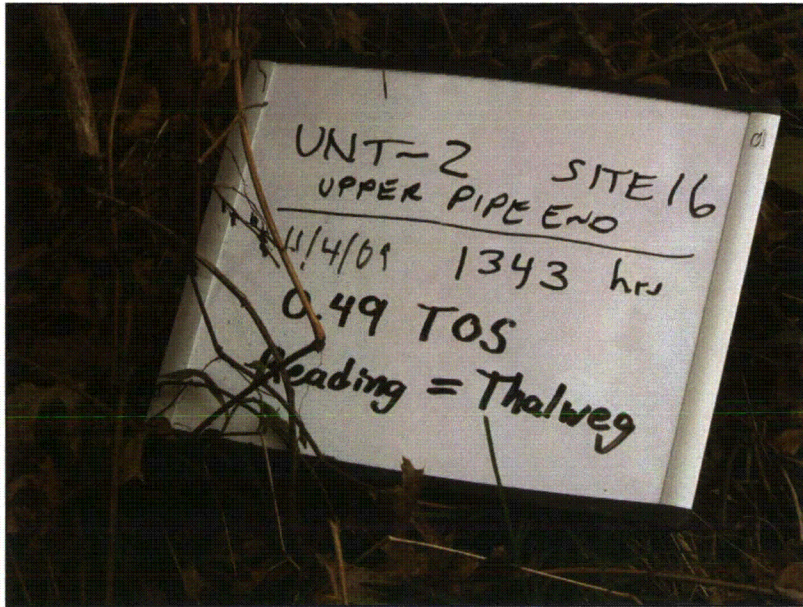


Photo 45. Site 16 Unnamed Tributary 2, Upper



Photo 47. Site 16 Unnamed Tributary 2, Upper



Photo 46. Site 16 Unnamed Tributary 2, Upper

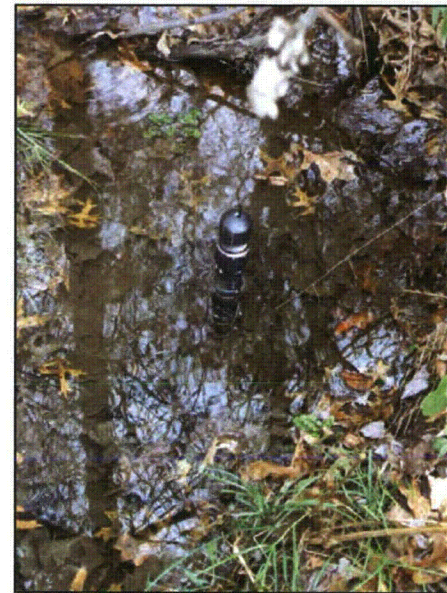


Photo 48. Site 16 Unnamed Tributary 2, Upper



## **APPENDIX F**

### **Pressure Transducer Set-Up Pages with Data Configurations**

Ten Installations on Walker Run  
Four Installations on the Unnamed Tributary  
Two Installations on the Unnamed Tributary 2



## Levellogger Gold Information

Instrument Type	M5	
Serial Number	1043870	
Project ID	Walker ST. 1	
Location	Walker Run #1	
Altitude	670	ft
<input type="checkbox"/> Density Adjustment	1	(kg/L) (0.90 - 1.10)
<b>Memory Mode Select</b> <input checked="" type="radio"/> Slate Logging Mode <input type="radio"/> Continuous Logging Mode		
Sample Mode	Linear	
Sample Rate	Minute(s)	10



Junior

## Levellogger Gold Status

Firmware Version	2.006	
Battery	100%	
Free Memory	31998	readings
Status	Stopped	
Levellogger Gold Time	November 01, 2009	
	18:48:04	
Start Time	September 24, 2009	
	08:51:18	

Identification	LEVEL	
Unit	ft	
Offset	0.00	ft
Range	16.4000	ft



# Levellogger Gold Information

Instrument Type M5

Serial Number 1043867

Project ID Walker ST. 2

Location Walker Run #2

Altitude 670 ft

☐ Density Adjustment 1 (kg/L) (0.90 - 1.10)

## Memory Mode Select

☒ Slate Logging Mode ☐ Continuous Logging Mode

Sample Mode Linear

Sample Rate Minute(s) 10



Junior

# Levellogger Gold Status

Firmware Version 2.006

Battery 100%

Free Memory 31997 readings

Status Stopped

Levellogger Gold Time November 01, 2009

18:46:49

Start Time September 24, 2009

08:52:58

Identification LEVEL

Unit ft

Offset 0.00 ft

Range 16.4000 ft



# Levellogger Gold Information

Instrument Type	M5	
Serial Number	1043878	
Project ID	Walker ST. 3	
Location	Walker Run #3	
Altitude	670	ft
<input type="checkbox"/> Density Adjustment	1	(kg/L) (0.90 - 1.10)
Memory Mode Select	<input checked="" type="radio"/> Slate Logging Mode <input type="radio"/> Continuous Logging Mode	
Sample Mode	Linear	
Sample Rate	Minute(s)	10



# Levellogger Gold Status

Firmware Version	2.006
Battery	100%
Free Memory	31998 readings
Status	Stopped
Levellogger Gold Time	November 01, 2009
	18:45:37
Start Time	September 24, 2009
	08:53:58

Identification	LEVEL	
Unit	ft	
Offset	0.00	ft
Range	16.4000	ft



# Levellogger Gold Information

Instrument Type M5

Serial Number 1043872

Project ID Walker ST. 4

Location Walker Run #4

Altitude 667 ft

☐ Density Adjustment 1 (kg/L) (0.90 - 1.10)

## Memory Mode Selectio

☒ Slate Logging Mode ☐ Continuous Logging Mode

Sample Mode Linear

Sample Rate Minute(s) 10



# Levellogger Gold Status

Firmware Version 2.006

Battery 100%

Free Memory 31999 readings

Status Stopped

Levellogger Gold Time November 01, 2009 18:44:17

Start Time September 24, 2009 08:43:40

Identification LEVEL

Unit ft

Offset 0.00 ft

Range 16.4000 ft



# Levellogger Gold Information

Instrument Type	M5	
Serial Number	1043909	
Project ID	Walker ST. 5	
Location	Walker Run #5	
Altitude	662	ft
Density Adjustment	1 (kg/L) (0.90 - 1.10)	
Memory Mode Select	<input checked="" type="radio"/> Slate Logging Mode <input type="radio"/> Continuous Logging Mode	
Sample Mode	Linear	
Sample Rate	Minute(s)	10



# Levellogger Gold Status

Firmware Version	2.006	
Battery	100%	
Free Memory	31998	readings
Status	Stopped	
Levellogger Gold Time	November 01, 2009	
	18:42:35	
Start Time	September 24, 2009	
	08:47:52	

Identification	LEVEL	
Unit	ft	
Offset	0.00	ft
Range	16.4000	ft



# Levellogger Gold Information

Instrument Type M5

Serial Number 1043873

Project ID Walker ST. 6

Location Walker Run #6

Altitude 657 ft

☐ Density Adjustment (kg/L) (0.90 - 1.10)

## Memory Mode Select

☒ Slate Logging Mode ☐ Continuous Logging Mode

Sample Mode Linear

Sample Rate Minute(s) 10



Junior

# Levellogger Gold Status

Firmware Version 2.006

Battery 100%

Free Memory 31998 readings

Status Stopped

Levellogger Gold Time November 01, 2009

18:40:30

Start Time September 24, 2009

08:52:10

Identification LEVEL

Unit ft

Offset 0.00 ft

Range 16.4000 ft



# Levellogger Gold Information

Instrument Type	M5	
Serial Number	1043884	
Project ID	Walker ST. 7	
Location	Walker Run #7	
Altitude	653	ft
Density Adjustment	1 (kg/L) (0.90 - 1.10)	
Memory Mode Select	<input checked="" type="radio"/> Slate Logging Mode <input type="radio"/> Continuous Logging Mode	
Sample Mode	Linear	
Sample Rate	Minute(s)	10



# Levellogger Gold Status

Firmware Version	2.006	
Battery	100%	
Free Memory	31998	readings
Status	Stopped	
Levellogger Gold Time	November 01, 2009	
	18:53:56	
Start Time	September 24, 2009	
	08:49:30	

Identification	LEVEL	
Unit	ft	
Offset	0.00	ft
Range	16.4000	ft



# Levellogger Gold Information

Instrument Type M5

Serial Number 1043468

Project ID Walker ST. 8

Location Walker Run #8

Altitude 649 ft

☐ Density Adjustment 1 (kg/L) (0.90 - 1.10)

## Memory Mode Select

☒ Slate Logging Mode ☐ Continuous Logging Mode

Sample Mode Linear

Sample Rate Minute(s) 10



# Levellogger Gold Status

Firmware Version 2.006

Battery 100%

Free Memory 31996 readings

Status Stopped

Levellogger Gold Time November 01, 2009

18:57:59

Start Time September 24, 2009

08:50:17

Identification LEVEL

Unit ft

Offset 0.00 ft

Range 16.4000 ft



# Levellogger Gold Information

Instrument Type	M5	
Serial Number	1043900	
Project ID	Walker ST. 9	
Location	Walker Run #9	
Altitude	645	ft
<input type="checkbox"/> Density Adjustment	1 (kg/L) (0.90 - 1.10)	
<b>Memory Mode Select</b> <input checked="" type="radio"/> Slate Logging Mode <input type="radio"/> Continuous Logging Mode		
Sample Mode	Linear	
Sample Rate	Minute(s)	10



# Levellogger Gold Status

Firmware Version	2.006
Battery	100%
Free Memory	31999 readings
Status	Stopped
Levellogger Gold Time	November 01, 2009
	19:01:03
Start Time	September 24, 2009
	08:39:25

Identification	LEVEL	
Unit	ft	
Offset	0.00	ft
Range	16.4000	ft



# Levellogger Gold Information

Instrument Type	M5	
Serial Number	1043880	
Project ID	Walker ST. 10	
Location	Walker Run #10	
Altitude	640	ft
<input type="checkbox"/> Density Adjustment	1 (kg/L) (0.90 - 1.10)	
<b>Memory Mode Select</b> <input checked="" type="radio"/> Slate Logging Mode <input type="radio"/> Continuous Logging Mode		
Sample Mode	Linear	
Sample Rate	Minute(s)	10



# Levellogger Gold Status

Firmware Version	2.006	
Battery	100%	
Free Memory	31998	readings
Status	Stopped	
Levellogger Gold Time	November 01, 2009	
	19:11:48	
Start Time	September 24, 2009	
	08:42:44	

Identification	LEVEL	
Unit	ft	
Offset	0.00	ft
Range	16.4000	ft



# Levellogger Gold Information

Instrument Type M5

Serial Number 1043868

Project ID UNT1 ST. 11

Location UNT1 #11

Altitude 656 ft

☐ Density Adjustment 1 (kg/L) (0.90 - 1.10)

## Memory Mode Select

☒ Slate Logging Mode ☐ Continuous Logging Mode

Sample Mode Linear

Sample Rate Minute(s) 10



Junior

# Levellogger Gold Status

Firmware Version 2.006

Battery 100%

Free Memory 31998 readings

Status Stopped

Levellogger Gold Time November 01, 2009

19:15:49

Start Time September 24, 2009

08:46:59

Identification LEVEL

Unit ft

Offset 0.00 ft

Range 16.4000 ft



# Levellogger Gold Information

Instrument Type M5

Serial Number 1043877

Project ID UNT1 ST. 12

Location UNT1 #12

Altitude 660 ft

☐ Density Adjustment 1 (kg/L) (0.90 - 1.10)

## Memory Mode Select

☒ Slate Logging Mode ☐ Continuous Logging Mode

Sample Mode Linear

Sample Rate Minute(s) 10



# Levellogger Gold Status

Firmware Version 2.006

Battery 100%

Free Memory 31998 readings

Status Stopped

Levellogger Gold Time November 01, 2009 19:19:22

Start Time September 24, 2009 08:41:44

Identification LEVEL

Unit ft

Offset 0.00 ft

Range 16.4000 ft



# Levellogger Gold Information

Instrument Type M5

Serial Number 1043875

Project ID UNT1 ST. 13

Location UNT1 #13

Altitude 679 ft

☐ Density Adjustment 1 (kg/L) (0.90 - 1.10)

Memory Mode Selective

☒ Slate Logging Mode ☐ Continuous Logging Mode

Sample Mode Linear

Sample Rate Minute(s) 10



Junior

# Levellogger Gold Status

Firmware Version 2.006

Battery 100%

Free Memory 31998 readings

Status Stopped

Levellogger Gold Time November 01, 2009

19:21:58

Start Time September 24, 2009

08:54:48

Identification LEVEL

Unit ft

Offset 0.00 ft

Range 16.4000 ft



# Levellogger Gold Information

Instrument Type M5

Serial Number 1043883

Project ID UNT1 ST. 14

Location UNT1 #14

Altitude 682 ft

☐ Density Adjustment 1 (kg/L) (0.90 - 1.10)

## Memory Mode Select

☒ Slate Logging Mode ☐ Continuous Logging Mode

Sample Mode Linear

Sample Rate Minute(s) 10



Junior

# Levellogger Gold Status

Firmware Version 2.006

Battery 100%

Free Memory 31998 readings

Status Stopped

Levellogger Gold Time November 01, 2009

19:24:32

Start Time September 24, 2009

08:45:58

Identification LEVEL

Unit ft

Offset 0.00 ft

Range 16.4000 ft



# Levellogger Gold Information

Instrument Type M5

Serial Number 1042152

Project ID UNT2 ST. 15

Location UNT2 #15

Altitude 660 ft

☐ Density Adjustment 1 (kg/L) (0.90 - 1.10)

Memory Mode Select

☒ Slate Logging Mode ☐ Continuous Logging Mode

Sample Mode Linear

Sample Rate Minute(s) 10



# Levellogger Gold Status

Firmware Version 2.006

Battery 100%

Free Memory 31998 readings

Status Stopped

Levellogger Gold Time November 01, 2009

19:27:06

Start Time September 24, 2009

08:40:42

Identification LEVEL

Unit ft

Offset 0.00 ft

Range 16.4000 ft



# Levellogger Gold Information

Instrument Type M5

Serial Number 1043888

Project ID UNT2 ST. 16

Location UNT2 #16

Altitude 662 ft

☐ Density Adjustment 1 (kg/L) (0.90 - 1.10)

## Memory Mode Select

☒ Slate Logging Mode ☐ Continuous Logging Mode

Sample Mode Linear

Sample Rate Minute(s) 10



# Levellogger Gold Status

Firmware Version 2.006

Battery 100%

Free Memory 31997 readings

Status Stopped

Levellogger Gold Time November 01, 2009

19:29:07

Start Time September 24, 2009

08:45:02

Identification LEVEL

Unit ft

Offset 0.00 ft

Range 16.4000 ft