

APPENDIX C

Photographs of the Lower and Upper Sites on the Unnamed Tributary 2

Habitat Assessments, Macroinvertebrate Sampling, and
Substrate Embeddedness Surveys

Unnamed Tributary 2 - Lower Site



Downstream of the headcut.



Downstream of the headcut.

Unnamed Tributary 2 - Lower Site



Silt and organic stream substrate downstream of the headcut.



Typical stream substrate downstream of the headcut.

Unnamed Tributary 2 - Lower Site



Headcut, working its way upstream.



Eroding bank just downstream of the headcut.

Unnamed Tributary 2 - Lower Site



Upper limit of the headcut. Stream goes underground above this.



Stream flows underground at this point, just upstream of the headcut and then re-emerges downstream of the headcut.

Unnamed Tributary 2 - Lower Site



Stream channel upstream of the headcut.



Stream substrate typical of this section of stream.

Unnamed Tributary 2 - Lower Site



Stream channel upstream of the headcut.



Downed trees across the stream, upstream of the headcut.

Unnamed Tributary 2 - Lower Site

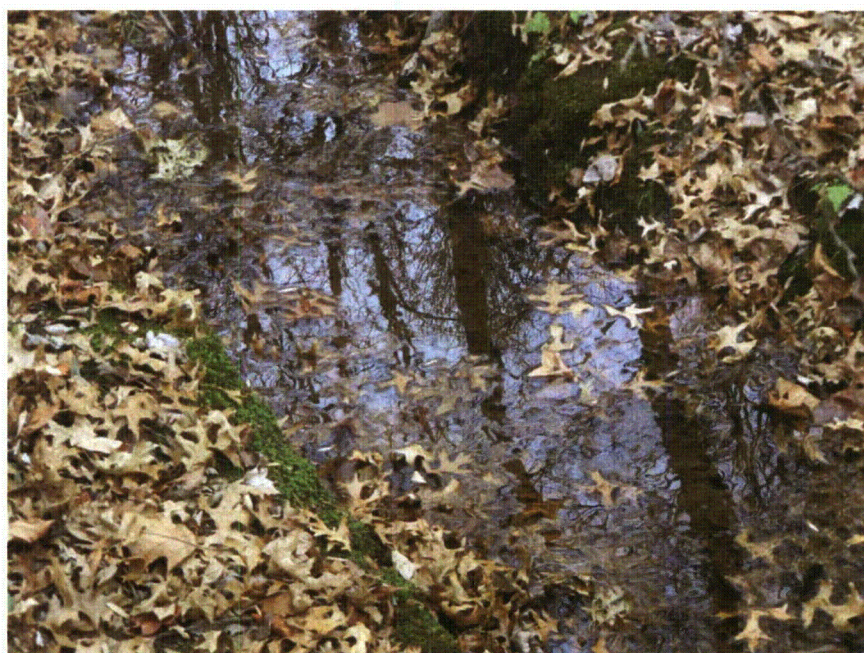


Outlet pipe that connects UNT2 - Upper Site to UNT2 - Lower Site. The stream is piped under the cropfield between the lower and upper sites.

Unnamed Tributary 2 - Upper Site



Stream reach between pipe inlet and the upper site headcut.



Reach between the pipe inlet and the headcut.

Unnamed Tributary 2 - Upper Site



Reach between the pipe inlet and the head cut.



Typical stream substrate found within the reach.

Unnamed Tributary 2 - Upper Site



Stream channel cutting under tree roots and eroding bank material.



Tree in above photo, showing channel meander.

Unnamed Tributary 2 - Upper Site



Small debris jam.



Eroding streambank in the upper reach.

Unnamed Tributary 2 - Upper Site



Two of the three headcuts where the stream emerges from underground flow.



The third headcut, near the other two, where the stream emerges from underground flow.

Unnamed Tributary 2 - Upper Site



Clay at the headcut, where the stream emerges from underground flow.



Another view of the headcut where the stream emerges.

Unnamed Tributary 2 - Upper Site



Silt and clay at the headcut, where the stream emerges.



Another view of the headcut where the stream emerges.

APPENDIX D

Photographs of the Substrate Embeddeness Transects

Seven Reaches on Walker Run
and Two Reaches on the Unnamed Tributary

Embeddedness Study - Photographs



S1-TA



S1-TA

Embeddedness Study - Photographs



S1-TB



S1-TB

Embeddedness Study - Photographs



S1-TC



S1-TC

Embeddedness Study - Photographs



S1-TD

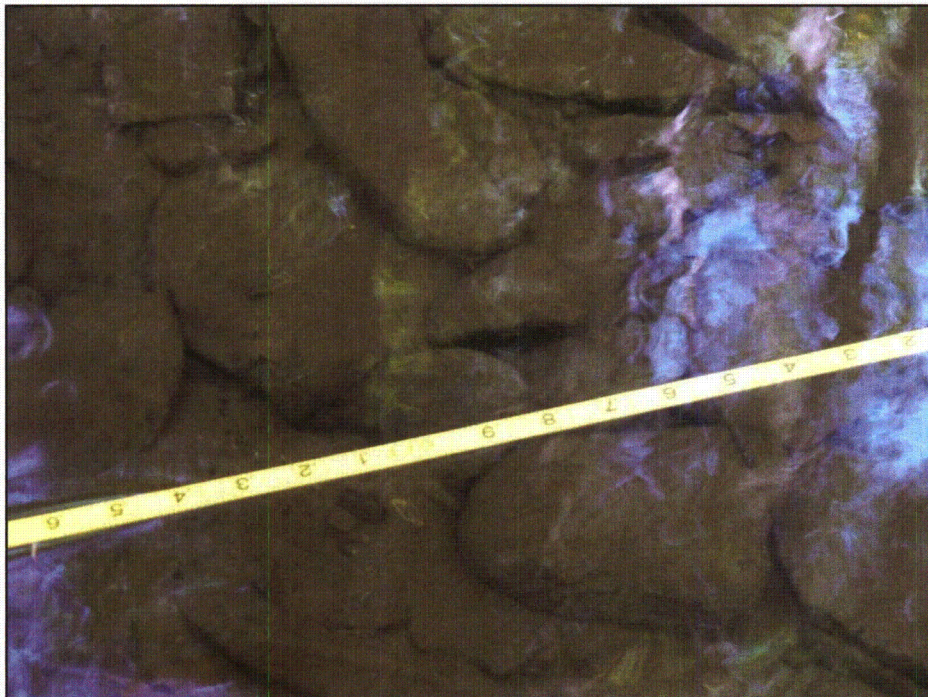


S1-TD

Embeddedness Study - Photographs

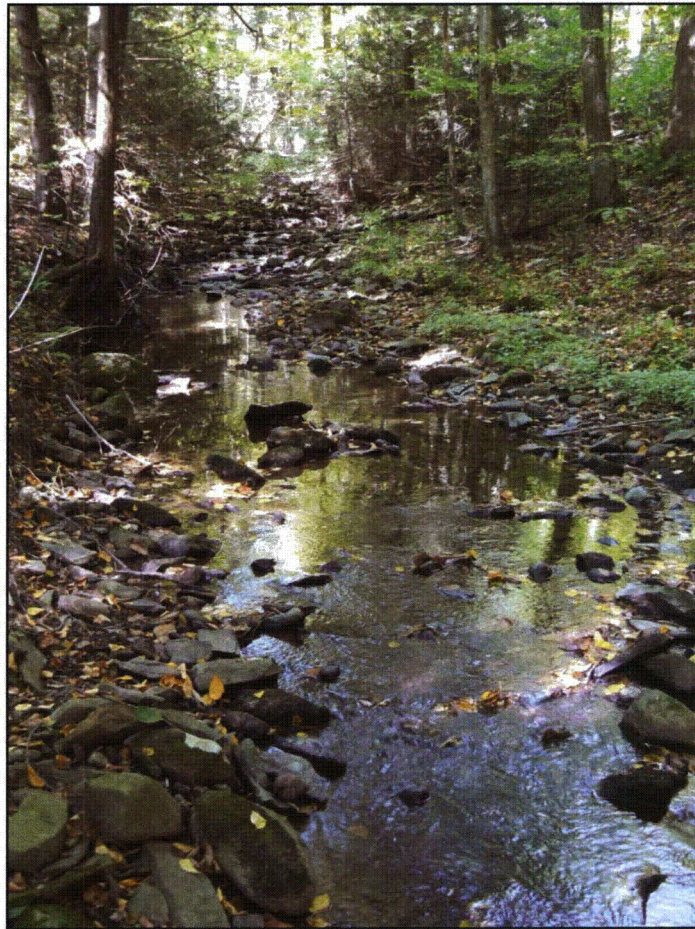


S1-TE



S1-TE

Embeddedness Study - Photographs

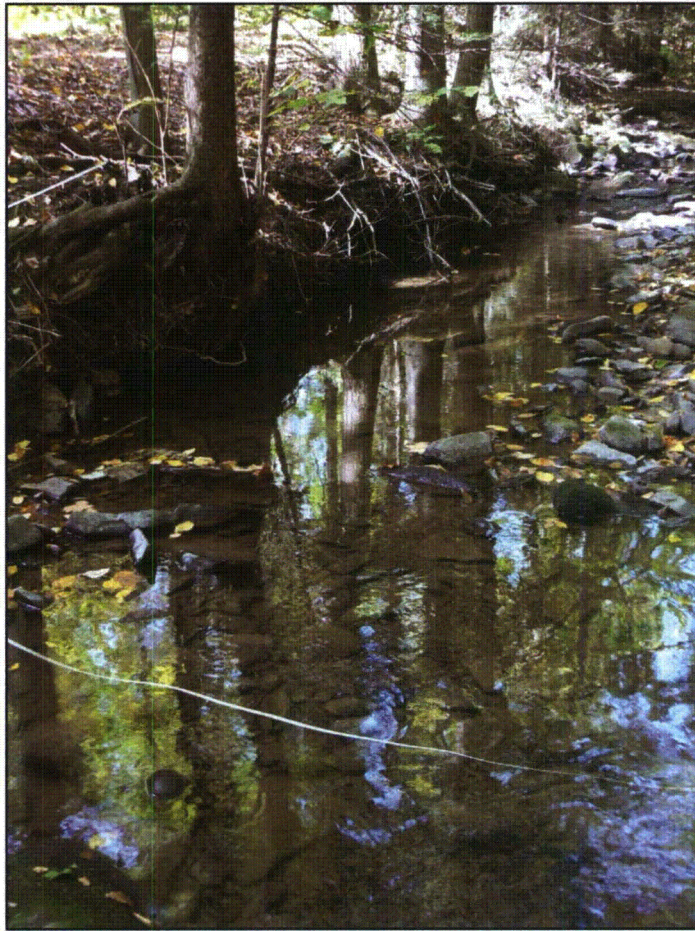


S1-TF

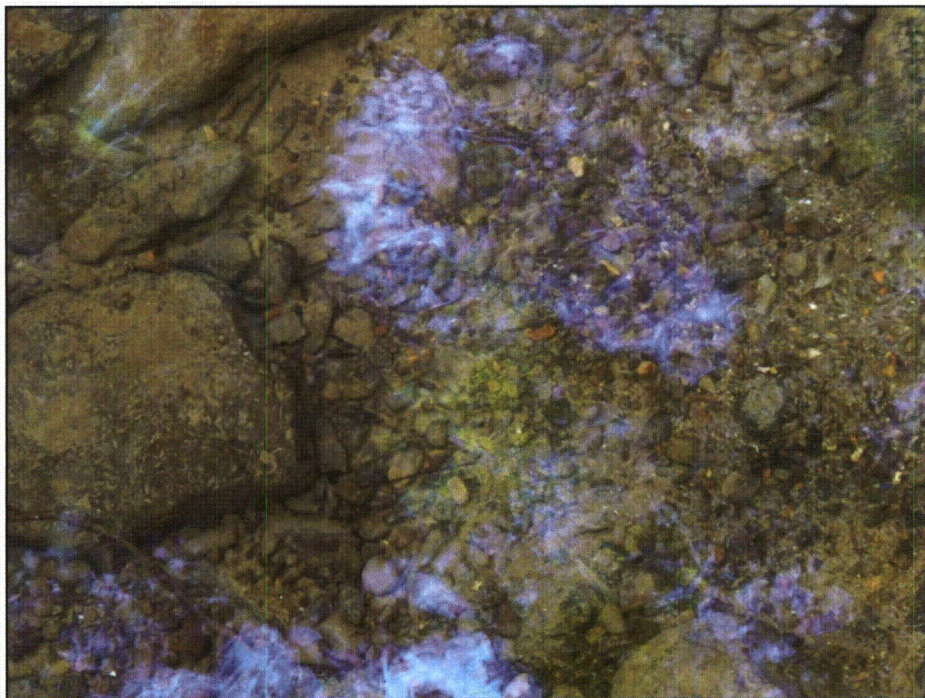


S1-TF

Embeddedness Study - Photographs



S1-TG

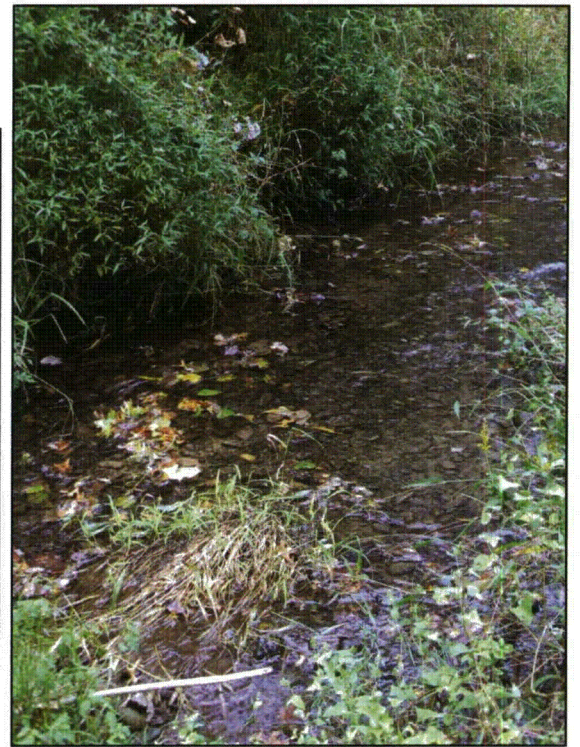


S1-TG

Embeddedness Study - Photographs



S2-TA



S2-TA



S2-TA

Embeddedness Study - Photographs



S2-TB



S2-TB

Embeddedness Study - Photographs



S2-TC



S2-TC

Embeddedness Study - Photographs

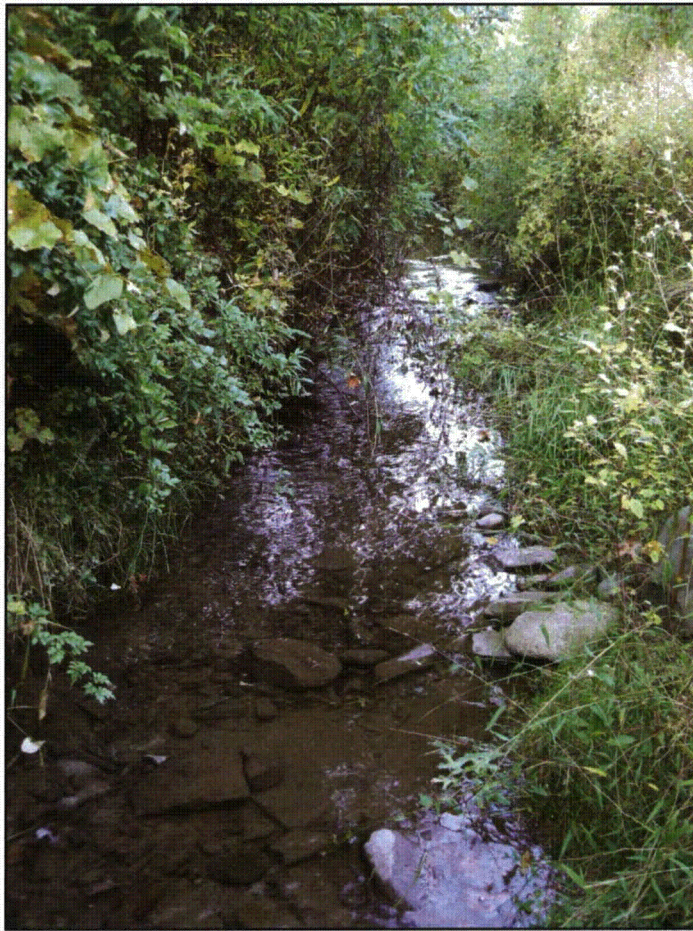


S2-TD



S2-TD

Embeddedness Study - Photographs

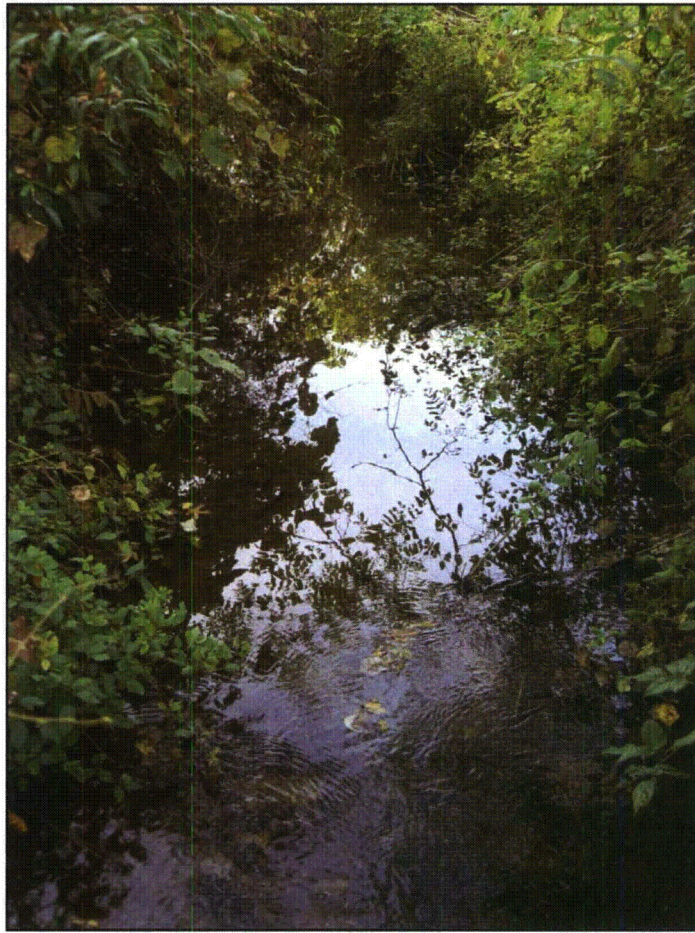


S2-TE



S2-TE

Embeddedness Study - Photographs



S2-TF



S2-TF

Embeddedness Study - Photographs



S2-TG

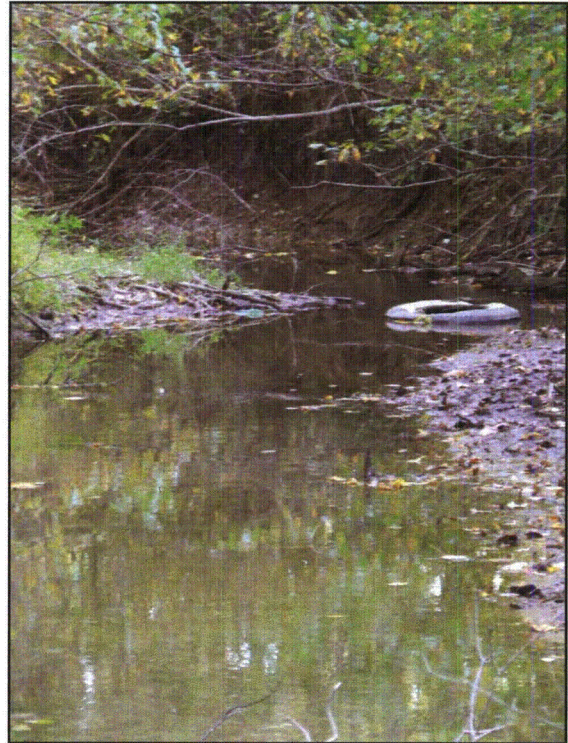


S2-TG

Embeddedness Study - Photographs



S3-TA



S3-TA

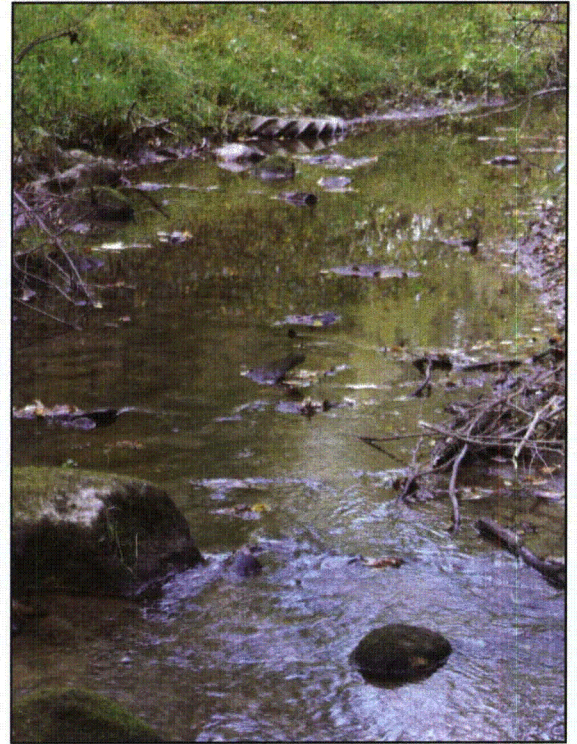


S3-TA

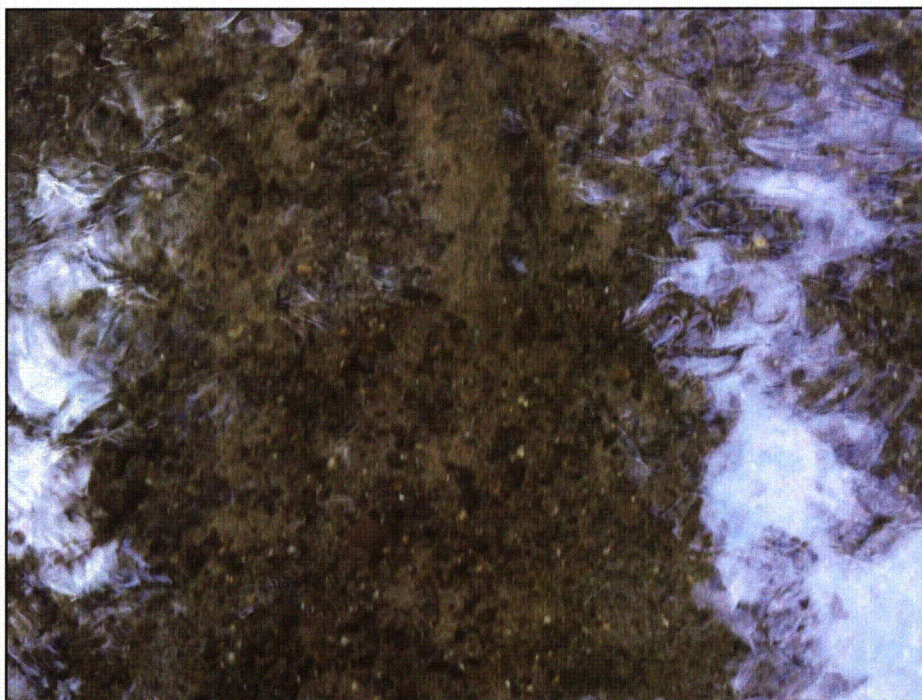
Embeddedness Study - Photographs



S3-TB



S3-TB

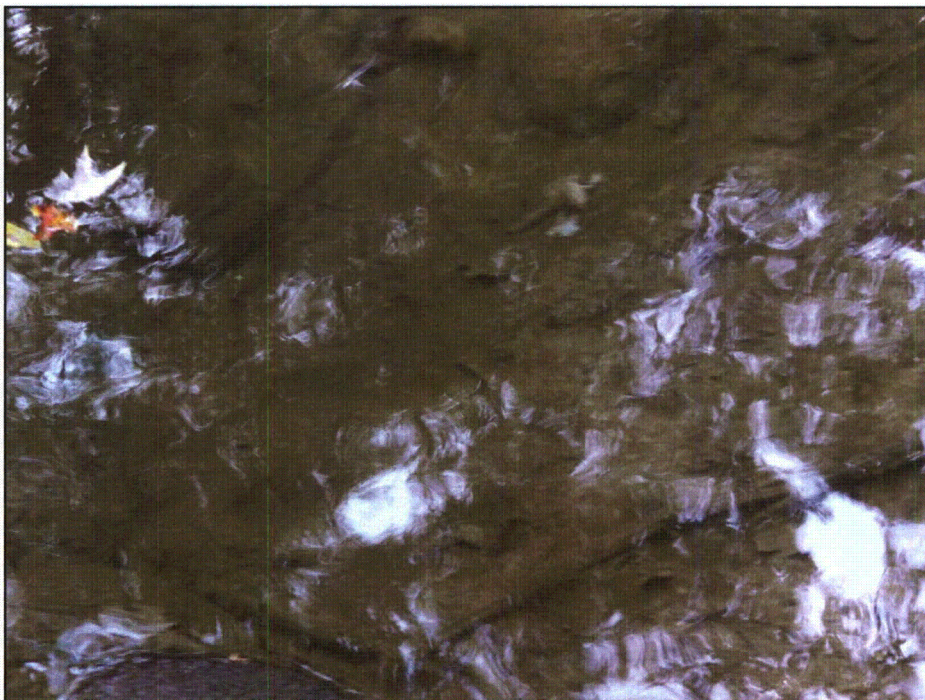


S3-TB

Embeddedness Study - Photographs



S3-TC



S3-TC

Embeddedness Study - Photographs



S3-TD



S3-TD

Embeddedness Study - Photographs



S3-TE



S3-TE

Embeddedness Study - Photographs



S3-TF



S3-TF

Embeddedness Study - Photographs



S3-TG

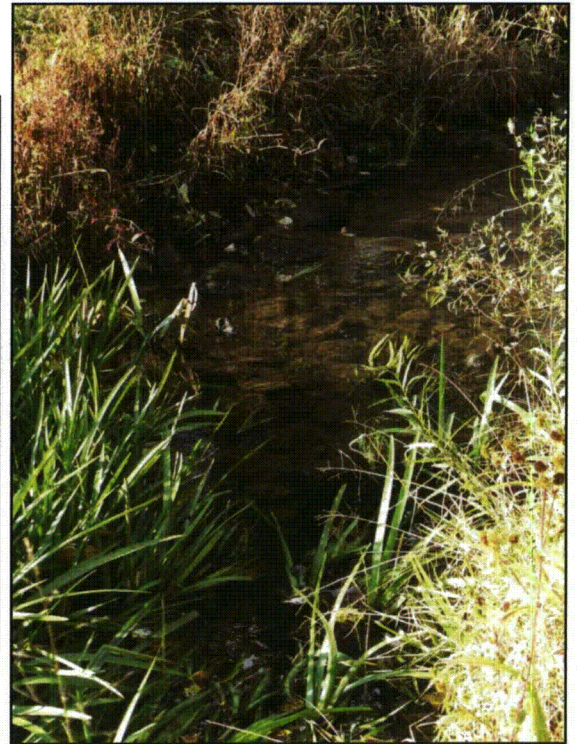


S3-TG

Embeddedness Study - Photographs



S4-TA



S4-TA

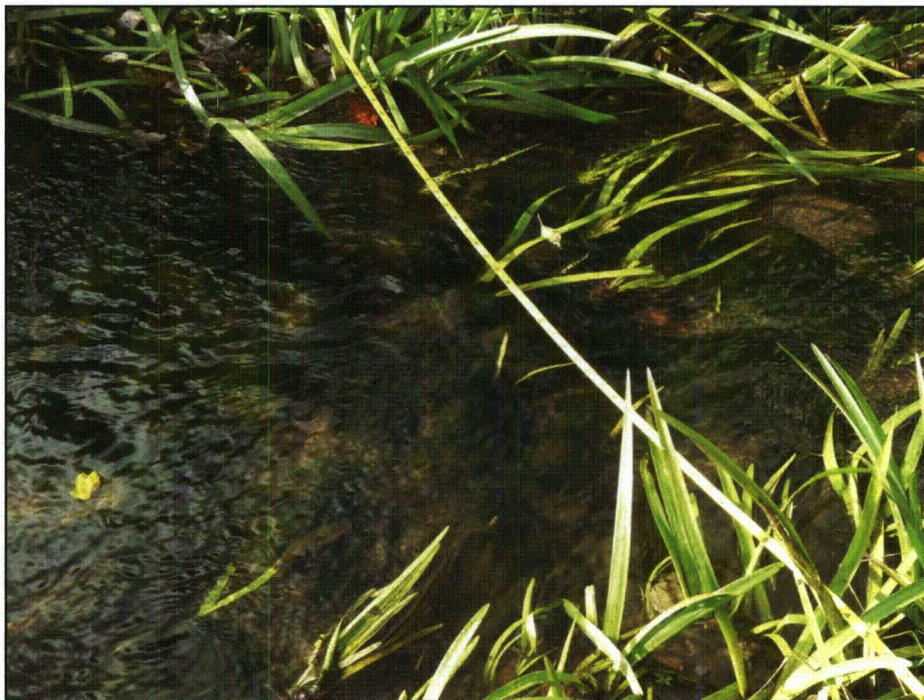


S4-TA

Embeddedness Study - Photographs



S4-TB



S4-TB

Embeddedness Study - Photographs



S4-TC



S4-TC

Embeddedness Study - Photographs



S4-TD



S4-TD

Embeddedness Study - Photographs



S4-TE



S4-TE

Embeddedness Study - Photographs



S4-TF



S4-TF

Embeddedness Study - Photographs



S4-TG



S4-TG