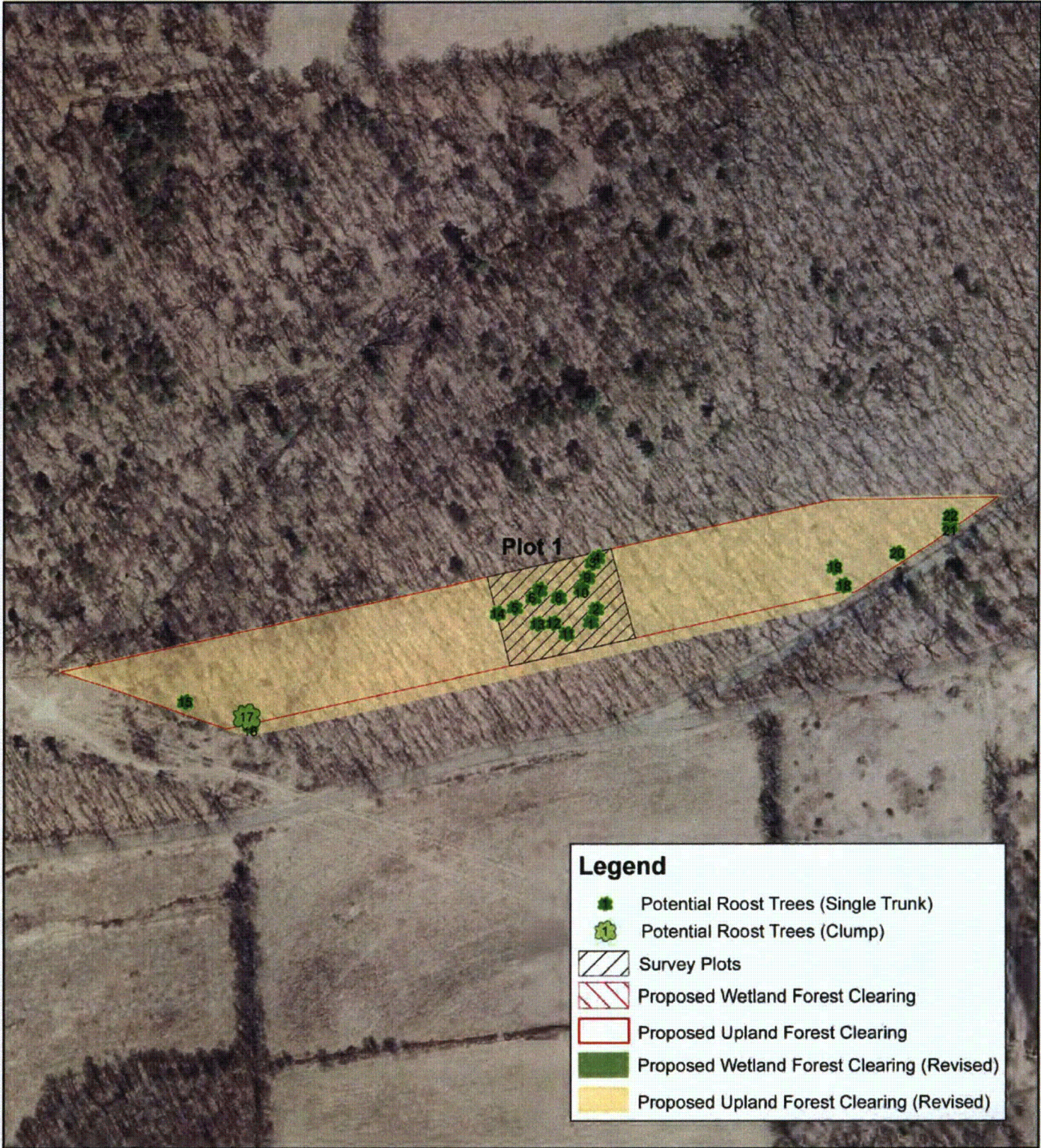


APPENDIX D

Forest Area Maps



300 150 0 300 Feet

Figure D-1.
BBNPP Forest Area 1
Potential Roost Tree Locations



NORMANDEAU ASSOCIATES
ENVIRONMENTAL CONSULTANTS
400 Old Reading Pike, Bldg A, Suite 101 Stowe, PA 19464

date: 11/29/10
prepared by: s.sherman
project: 22474.000

rev. date: 01/09/11, 09/15/11
prepared for: c. roche
file name: Area1_UP_AppendixFig_Rev



Figure D-2.
BBNPP Forest Area 3
Potential Roost Tree Locations



NORMANDEAU ASSOCIATES
ENVIRONMENTAL CONSULTANTS
400 Old Reading Pike, Bldg A, Suite 101 Stowe, PA 19464

date: 12/13/10
prepared by: s.sherman
project: 22474.000

rev. date: 01/09/11, 09/15/11
prepared for: c. roche
file name: Area3_UP_AppendixFig_Rev



Figure D-3.
BBNPP Forest Area 5
Potential Roost Tree Locations



NORMANDEAU ASSOCIATES
ENVIRONMENTAL CONSULTANTS
400 Old Reading Pike, Bldg A, Suite 101 Stowe, PA 19464

date: 11/29/10
prepared by: s.sherman
project: 22474.000

rev. date: 01/09/11, 09/15/11
prepared for: c.roche
file name: Area5_UP_AppendixFig_Rev



Figure D-4.
BBNPP Forest Area 7
Potential Roost Tree Locations



NORMANDEAU ASSOCIATES
ENVIRONMENTAL CONSULTANTS
400 Old Reading Pike, Bldg A, Suite 101 Stowe, PA 19464

date: 11/29/10
prepared by: s.sherman
project: 22474.000

rev. date: 01/09/11, 09/15/11
prepared for: c. roche
file name: Area7_UP_AppendixFig_Rev



250 125 0 250 Feet

Figure D-5.
BBNPP Forest Area 8
Potential Roost Tree Locations



NORMANDEAU ASSOCIATES
ENVIRONMENTAL CONSULTANTS
400 Old Reading Pike, Bldg A, Suite 101 Stowe, PA 19464

date: 11/29/10
prepared by: s.sherman
project: 22474.000

rev. date: 01/09/11, 09/15/11
prepared for: c. roche
file name: Area8_PFOandUP_AppendixFig_Rev

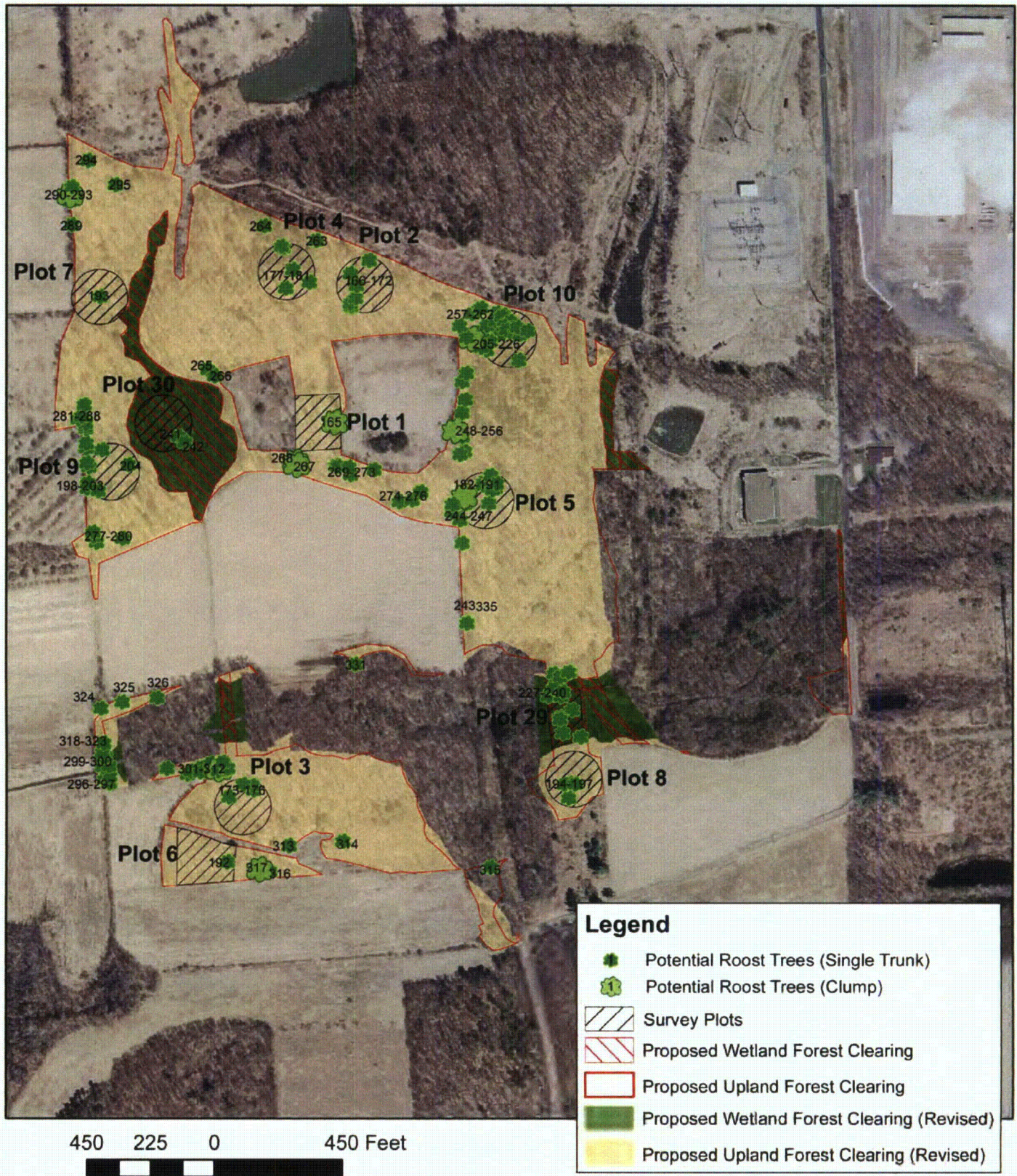


Figure D-6.
BBNPP Forest Area 9
Potential Roost Tree Locations



NORMANDEAU ASSOCIATES
ENVIRONMENTAL CONSULTANTS
400 Old Reading Pike, Bldg A, Suite 101 Stowe, PA 19484

date: 12/13/10
prepared by: s.sherman
project: 22474.000

rev. date: 01/09/11, 09/15/11
prepared for: c. roche
file name: Area9_PFOandUP_AppendixFig_Rev



Figure D-7.
BBNPP Forest Area 10
Potential Roost Tree Locations



NORMANDEAU ASSOCIATES
ENVIRONMENTAL CONSULTANTS
400 Old Reading Pike, Bldg A, Suite 101 Stowe, PA 19464

date: 12/13/10
prepared by: s.sherman
project: 22474.000

rev. date: 01/09/11, 09/15/11
prepared for: c. roche
file name: Area10_PFOandUP_AppendixFig_Rev



150 75 0 150 Feet

Figure D-8.
BBNPP Forest Area 11
Potential Roost Tree Locations



NORMANDEAU ASSOCIATES
ENVIRONMENTAL CONSULTANTS
400 Old Reading Pike, Bldg A, Suite 101 Stowe, PA 19464

date: 11/29/10
prepared by: s.sherman
project: 22474.000

rev. date: 01/09/11, 09/14/11
prepared for: c. roche
file name: Area11_PFOandUP_AppendixFig_Rev



Figure D-9.
BBNPP Forest Area 12
Potential Roost Tree Locations



NORMANDEAU ASSOCIATES
ENVIRONMENTAL CONSULTANTS
400 Old Reading Pike, Bldg A, Suite 101 Stowe, PA 19464

date: 12/13/10
prepared by: s.sherman
project: 22474.000

rev. date: 01/09/11, 09/14/11
prepared for: c.roche
file name: Area12_PFOandUP_AppendixFig_Rev

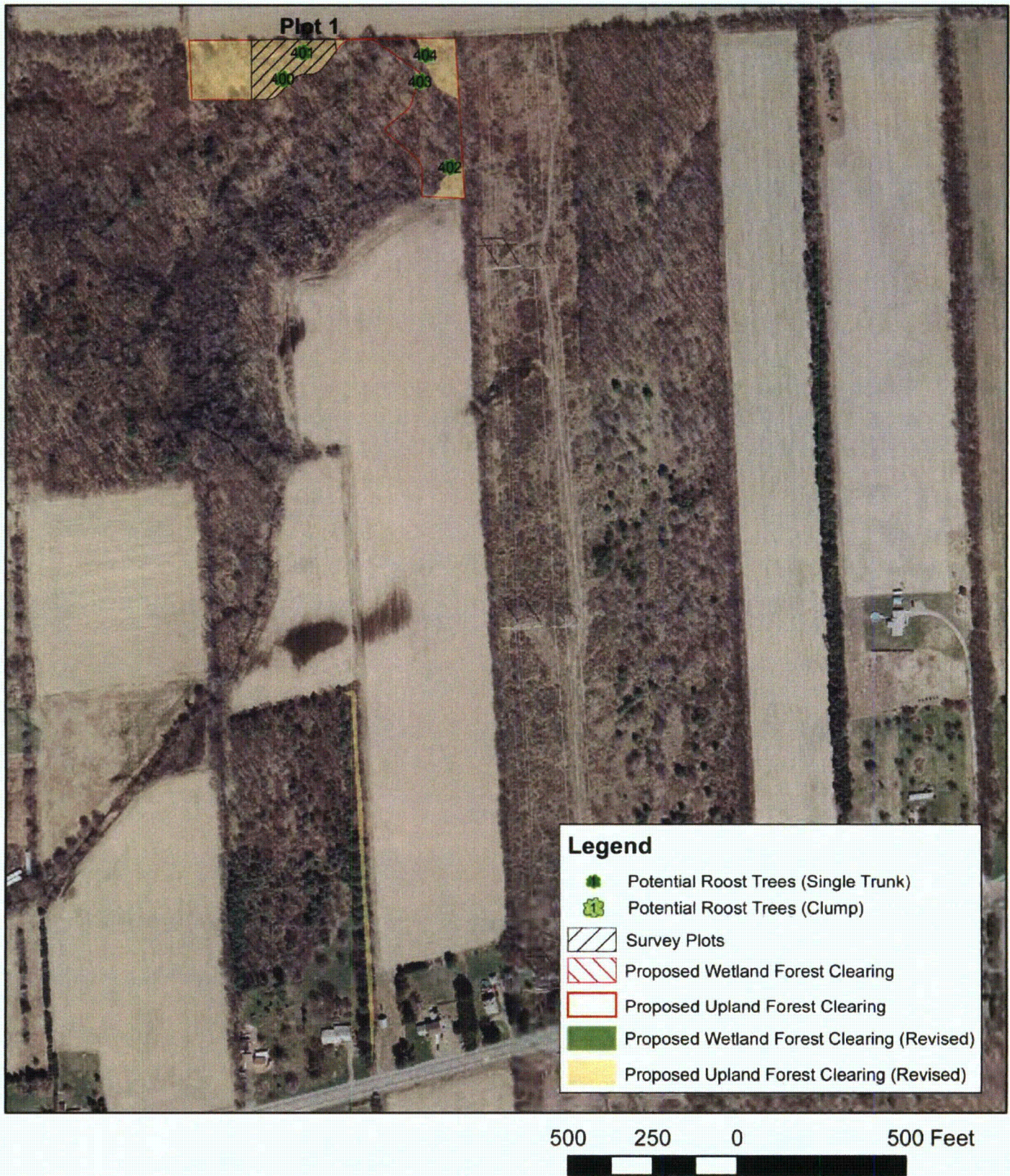


Figure D-10.
BBNPP Forest Area 13
Potential Roost Tree Locations



NORMANDEAU ASSOCIATES
ENVIRONMENTAL CONSULTANTS
400 Old Reading Pike, Bldg A, Suite 101 Stowe, PA 19464

date: 11/29/10
prepared by: s.sherman
project: 22474.000

rev. date: 01/09/11, 09/15/11
prepared for: c. roche
file name: Area13_UP_AppendixFig_Rev



Figure D-11.
BBNPP Forest Area 14
Potential Roost Tree Locations



NORMANDEAU ASSOCIATES
ENVIRONMENTAL CONSULTANTS
400 Old Reading Pike, Bldg A, Suite 101 Stowe, PA 19464

date: 11/29/10
prepared by: s.sherman
project: 22474.000

rev. date: 01/09/11, 09/15/11
prepared for: c.roche
file name: Area14_UP_AppendixFig_Rev

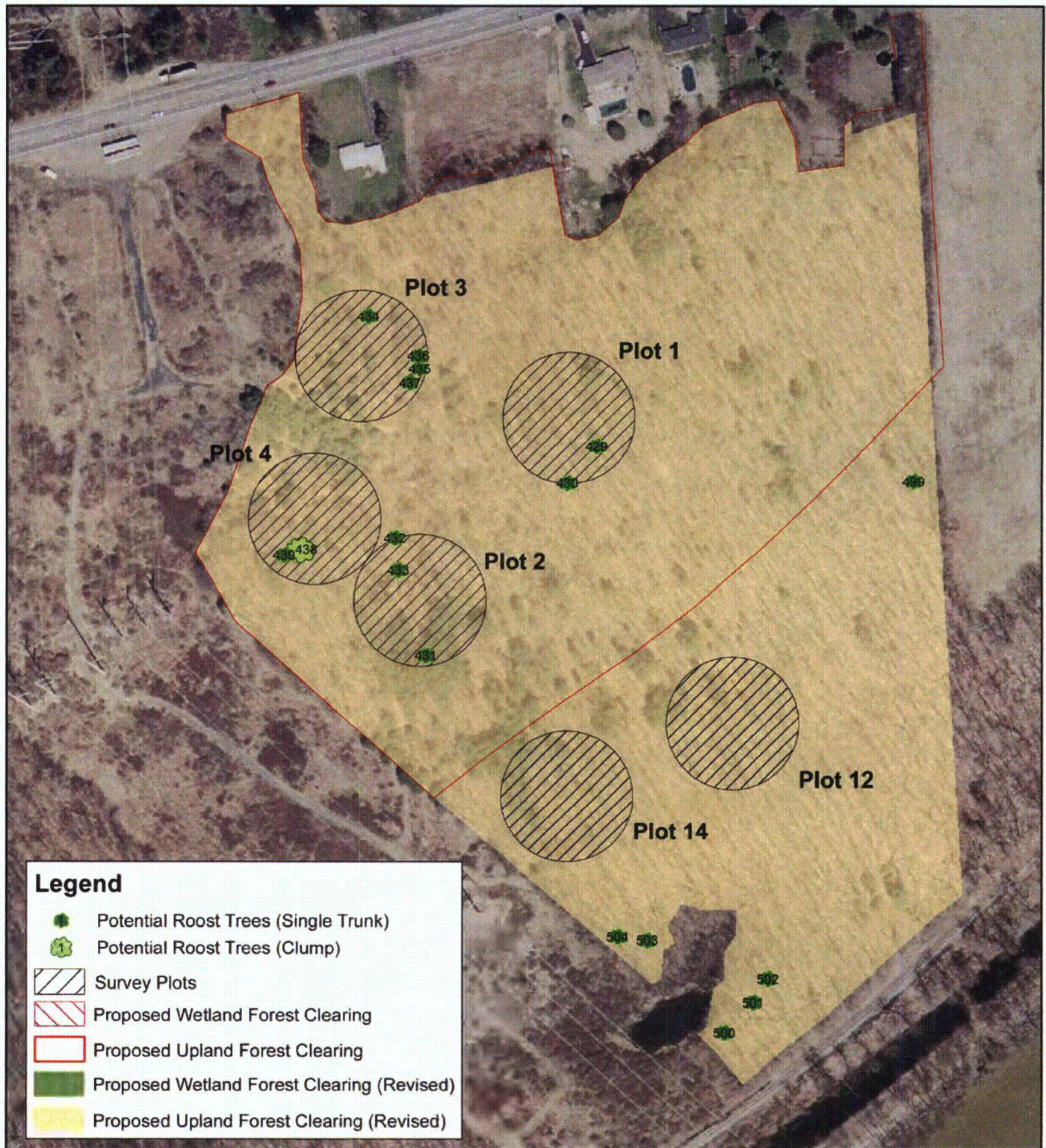


Figure D-12.
BBNPP Forest Area 15
Potential Roost Tree Locations



NORMANDEAU ASSOCIATES
ENVIRONMENTAL CONSULTANTS
400 Old Reading Pike, Bldg A, Suite 101 Stowe, PA 19464

date: 11/29/10
prepared by: s.sherman
project: 22474.000

rev. date: 01/09/11, 09/15/11
prepared for: c.roche
file name: Area15_UP_AppendixFig_Rev

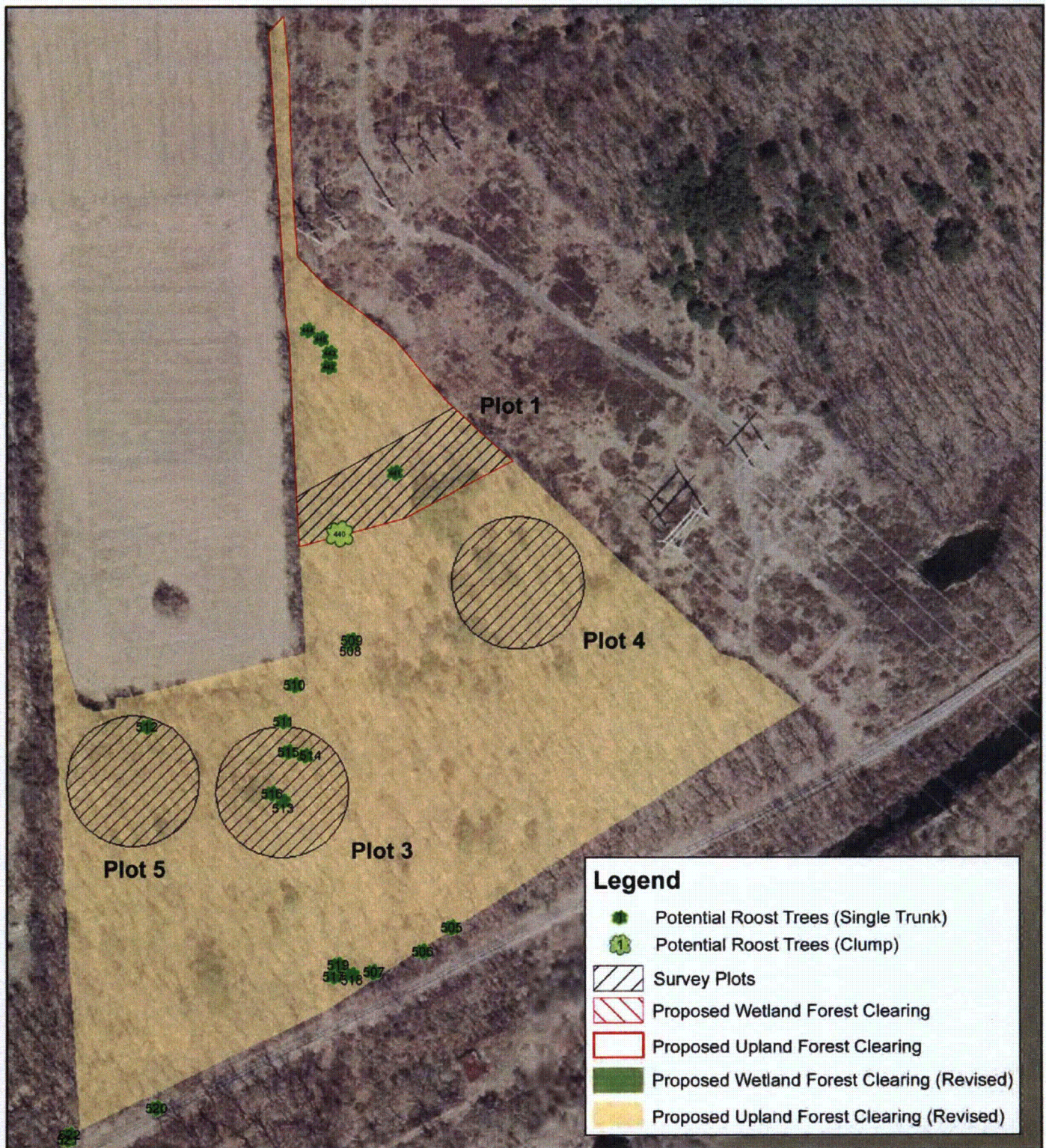


Figure D-13.
BBNPP Forest Area 16
Potential Roost Tree Locations



NORMANDEAU ASSOCIATES
ENVIRONMENTAL CONSULTANTS
400 Old Reading Pike, Bldg A, Suite 101 Stowe, PA 19464

date: 11/29/10
prepared by: s.sherman
project: 22474.000

rev. date: 01/09/11, 09/15/11
prepared for: c. roche
file name: Area16_UP_AppendixFig_Rev



Figure D-14.
BBNPP Forest Area 17
Potential Roost Tree Locations



NORMANDEAU ASSOCIATES
ENVIRONMENTAL CONSULTANTS
400 Old Reading Pike, Bldg A, Suite 101 Stowe, PA 19464

date: 12/13/10
prepared by: s.sherman
project: 22474.000

rev. date: 01/09/11, 09/15/11
prepared for: c.roche
file name: Area17_UP_AppendixFig_Rev



Figure D-15.
BBNPP Forest Area 18
Potential Roost Tree Locations



NORMANDEAU ASSOCIATES
ENVIRONMENTAL CONSULTANTS
400 Old Reading Pike, Bldg A, Suite 101 Stowe, PA 19464

date: 11/29/10
prepared by: s.sherman
project: 22474.000

rev. date: 01/09/11, 09/15/11
prepared for: c.roche
file name: Area18_UP_AppendixFig_Rev



Figure D-16.
BBNPP Forest Area 25
Potential Roost Tree Locations



NORMANDEAU ASSOCIATES
ENVIRONMENTAL CONSULTANTS
400 Old Reading Pike, Bldg A, Suite 101 Stowe, PA 19464

date: 11/29/10
prepared by: s.sherman
project: 22474.000

rev. date: 01/09/11, 01/26/11, 09/15/11
prepared for: c.roche
file name: Area25_PFOandUP_AppendixFig_Rev



200 100 0 200 Feet

Figure D-17.
BBNPP Forest Area 26
Potential Roost Tree Locations



NORMANDEAU ASSOCIATES
ENVIRONMENTAL CONSULTANTS
400 Old Reading Pike, Bldg A, Suite 101 Stowe, PA 19464

date: 12/13/10
prepared by: s.sherman
project: 22474.000

rev. date: 01/09/11, 09/15/11
prepared for: c.roche
file name: Area26_PFO_AppendixFig_Rev



Figure D-18.
BBNPP Forest Area 29
Potential Roost Tree Locations



NORMANDEAU ASSOCIATES
ENVIRONMENTAL CONSULTANTS
400 Old Reading Pike, Bldg A, Suite 101 Stowe, PA 19464

date: 12/13/10
prepared by: s.sherman
project: 22474.000

rev. date: 01/09/11, 09/15/11
prepared for: c.roche
file name: Area29_PFOandUP_AppendixFig_Rev

APPENDIX E

Photographs

Bell Bend NPP Roost Tree Study Report



Photo 1. Forest Area 1 – Upland oak-hickory forest showing young, healthy trees characteristic of early successional forest onsite.

Bell Bend NPP Roost Tree Study Report



Photo 2. Forest Area 3 – Upland forest edge with black cherry (*Prunus serotina*) and shagbark hickory (*Carya ovata*). Shagbark hickories exhibit suitable roost tree characteristics.

Bell Bend NPP Roost Tree Study Report



Photo 3. Forest Area 3 - Close-up of shagbark hickories exhibiting suitable roost tree characteristics. Both trees are live with naturally exfoliating bark. Tree in center is considered a clump as it has two trunks, each with suitable roost tree characteristics.

Bell Bend NPP Roost Tree Study Report



Photo 4. Forest Area 9 – Typical snag with suitable roost tree characteristics. Stub lacking suitable roost tree characteristics is visible to the right.

Bell Bend NPP Roost Tree Study Report



Photo 5. Forest Area 9 – Close-up of snag with exfoliating bark visible. Stub to right is lacking in suitable bark characteristics and has been heavily excavated by woodpeckers.

Bell Bend NPP Roost Tree Study Report



Photo 6. Forest Area 13 – This live shagbark hickory was considered a roost tree with high potential as it was greater than 16 inches dbh and had a large percentage of exfoliating bark.

Bell Bend NPP Roost Tree Study Report



Photo 7. Forest Area 13 – Close-up of shagbark hickory with a high potential for use as a roost tree and with exfoliating bark visible.