

Figure 1.
Location of Proposed BBNPP



NORMANDEAU ASSOCIATES
ENVIRONMENTAL CONSULTANTS
400 Old Reading Pike, Bldg A, Suite 101 Stowe, PA 19464

date: 07/20/10
prepared by: s.sherman
project: 22474.000

rev. date: 11/11/10, 09/01/11
prepared for: b.lees
file name: Figure1.BBNPP_Site_USGS

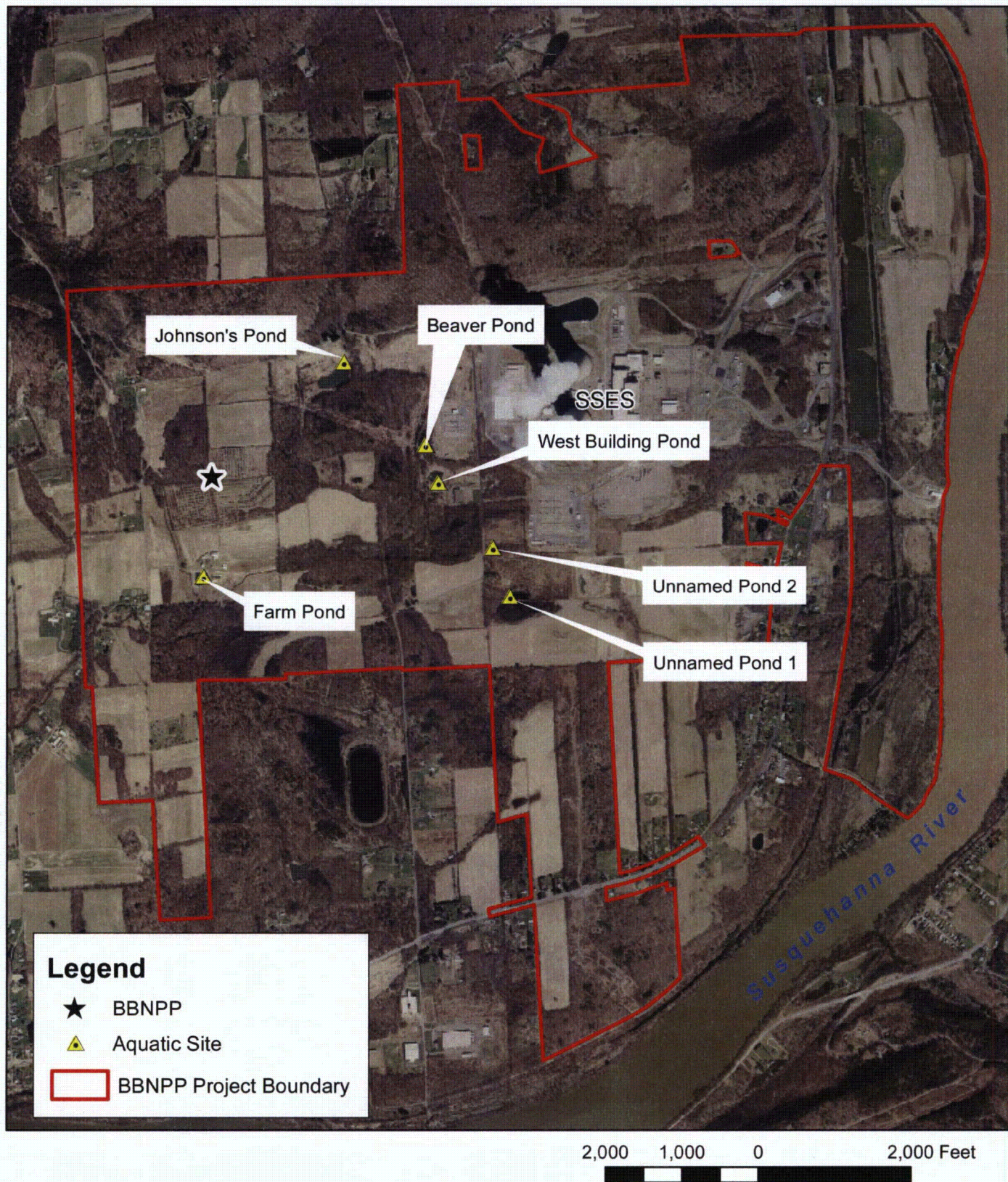


Figure 2.
Location of the pond biota
collection stations.



NORMANDEAU ASSOCIATES
 ENVIRONMENTAL CONSULTANTS
 400 Old Reading Pike, Bldg A, Suite 101 Stowe, PA 19464

date: 07/20/10
 prepared by: s.sherman
 project: 22474.000

rev. date: 11/17/10, 09/01/11
 prepared for: b.lees
 file name: Figure2.BBNPP Ponds