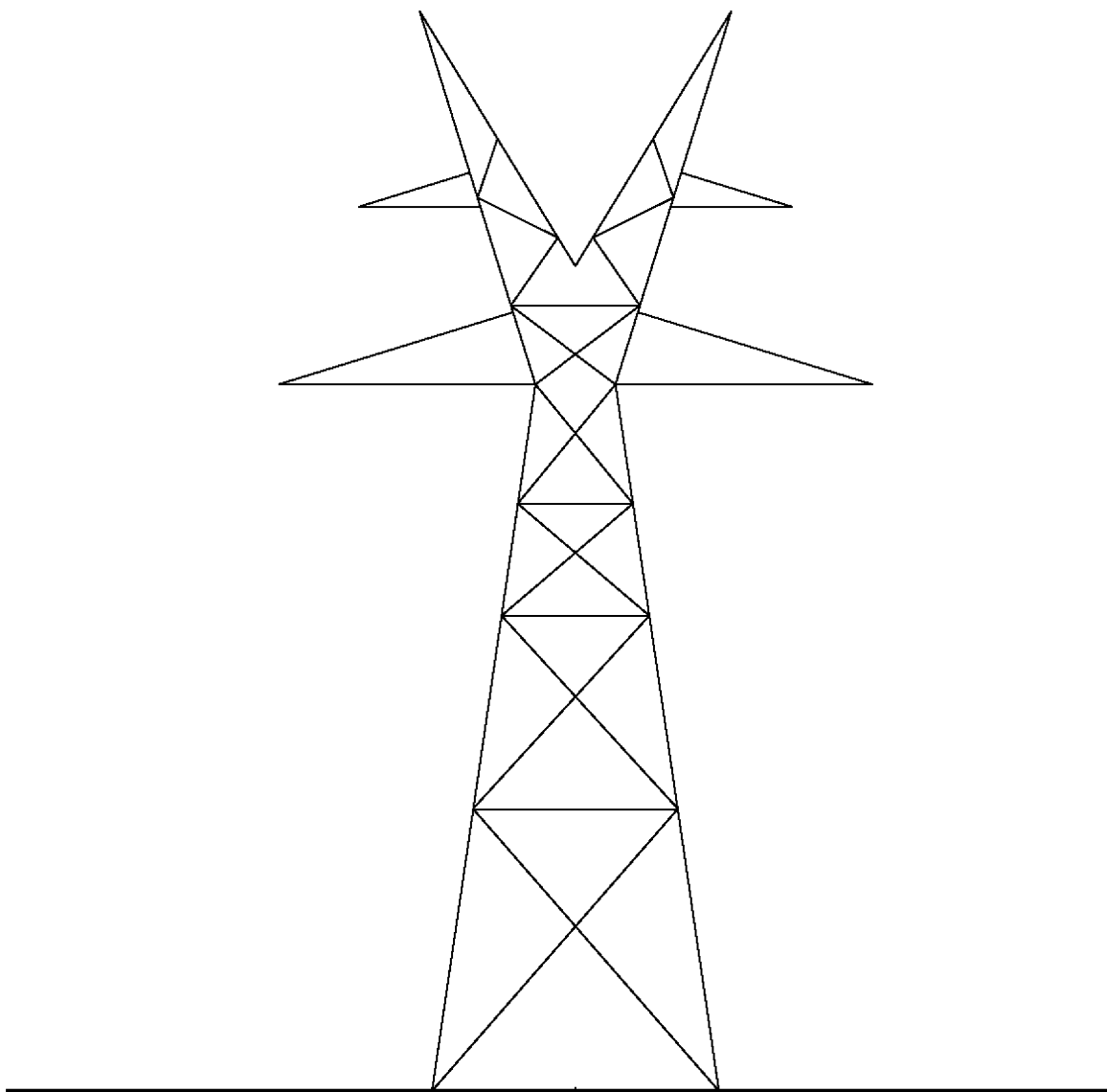


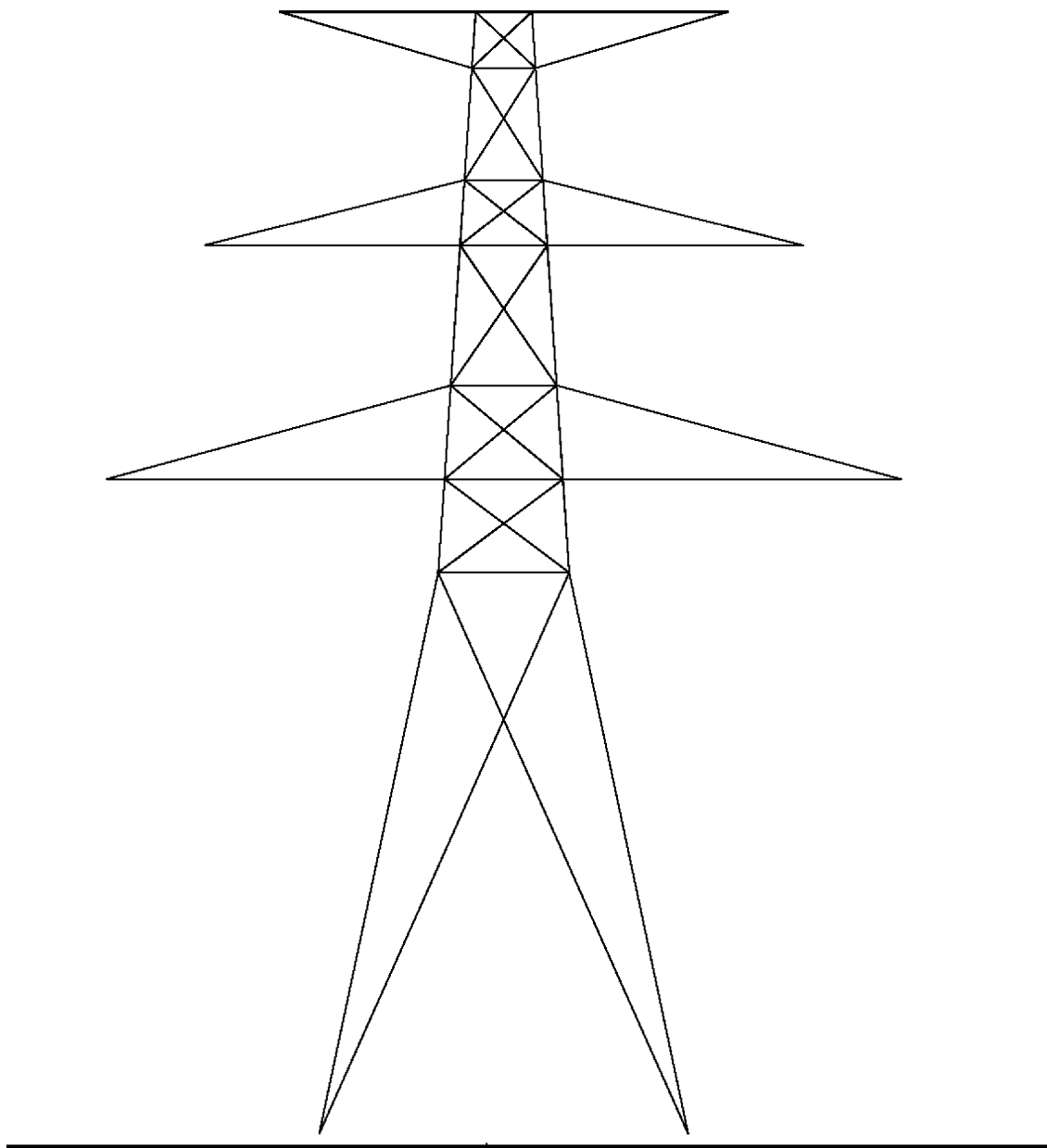
**Comanche Peak Nuclear Power Plant, Units 3 & 4
COL Application
Part 3 - Environmental Report**



**TYPICAL 345 KV
V TYPE TOWER
TANGENT TOWER**

Figure 3.7-2 Transmission Standard Towers (Sheet 1 of 6)

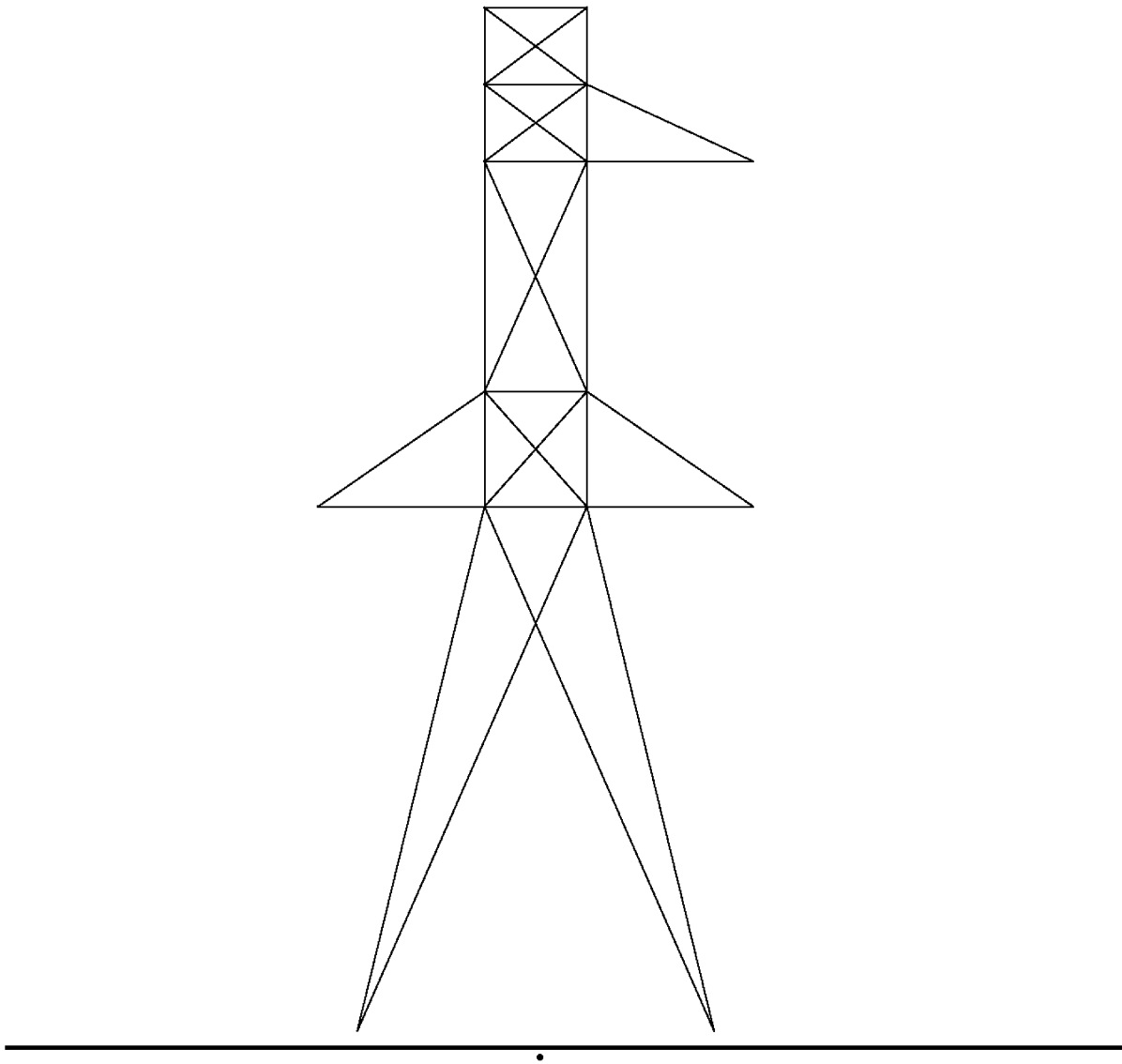
**Comanche Peak Nuclear Power Plant, Units 3 & 4
COL Application
Part 3 - Environmental Report**



**TYPICAL 345 KV
V TYPE TOWER
70-DEG ANGLE TOWER**

Figure 3.7-2 Transmission Standard Towers (Sheet 2 of 6)

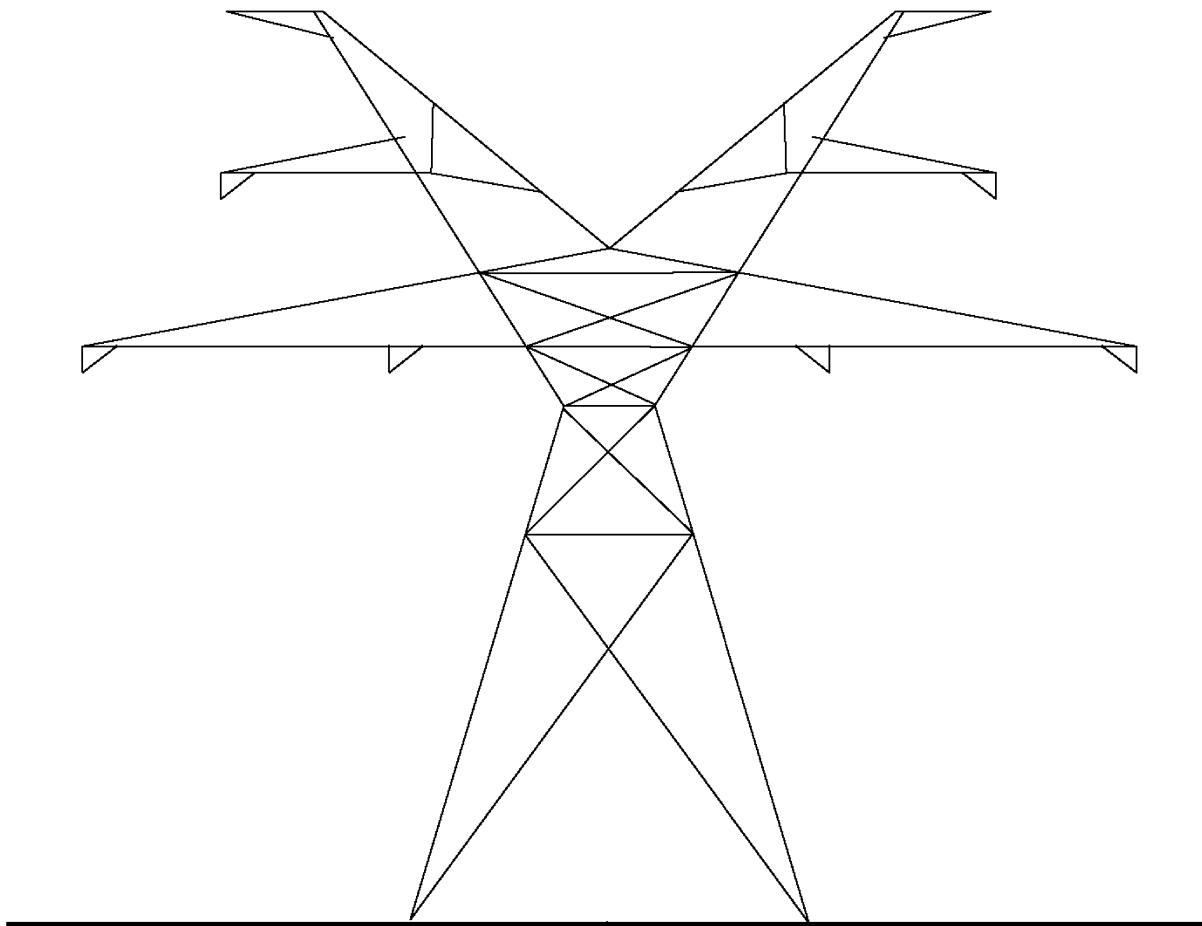
**Comanche Peak Nuclear Power Plant, Units 3 & 4
COL Application
Part 3 - Environmental Report**



**TYPICAL 345 KV
V TYPE TOWER
90-DEG DEADEND TOWER
(2 REQ'D FOR DBL CIRCUIT)**

Figure 3.7-2 Transmission Standard Towers (Sheet 3 of 6)

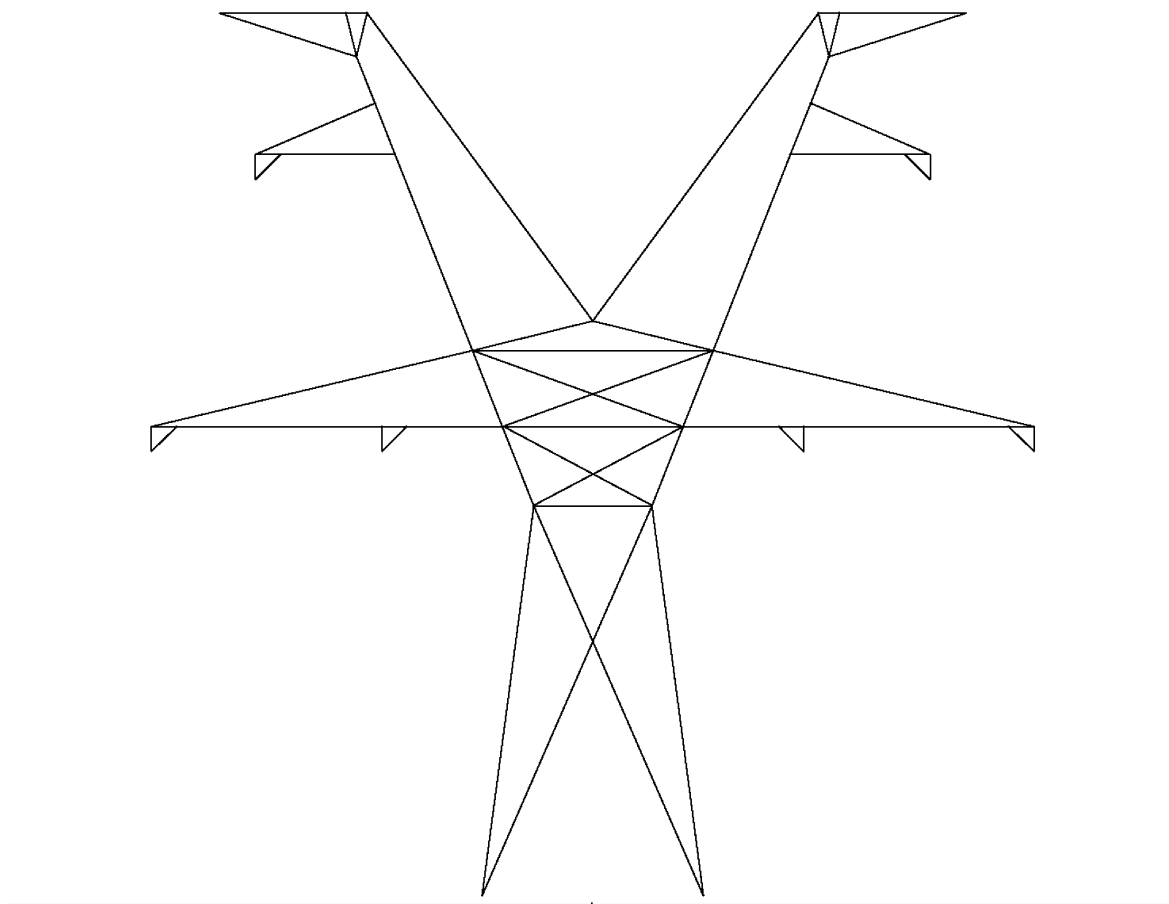
**Comanche Peak Nuclear Power Plant, Units 3 & 4
COL Application
Part 3 - Environmental Report**



**TYPICAL 345 KV
V TYPE TOWER
25-DEG ANGLE TOWER**

Figure 3.7-2 Transmission Standard Towers (Sheet 4 of 6)

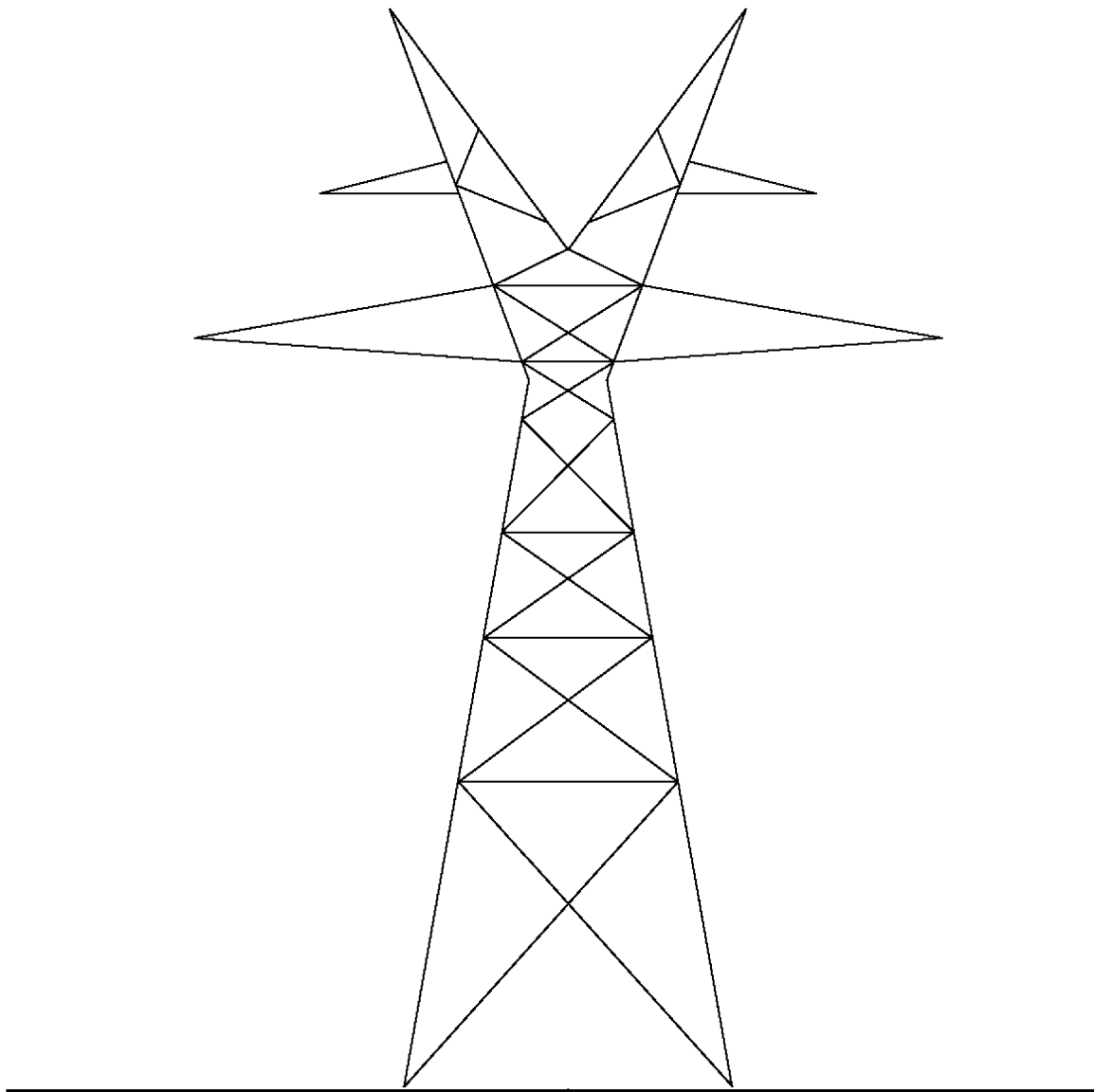
**Comanche Peak Nuclear Power Plant, Units 3 & 4
COL Application
Part 3 - Environmental Report**



**TYPICAL 345 KV
V TYPE TOWER
10-DEG ANGLE TOWER**

Figure 3.7-2 Transmission Standard Towers (Sheet 5 of 6)

**Comanche Peak Nuclear Power Plant, Units 3 & 4
COL Application
Part 3 - Environmental Report**



**TYPICAL 345 KV
V TYPE TOWER
5-DEG TOWER**

Figure 3.7-2 Transmission Standard Towers (Sheet 6 of 6)