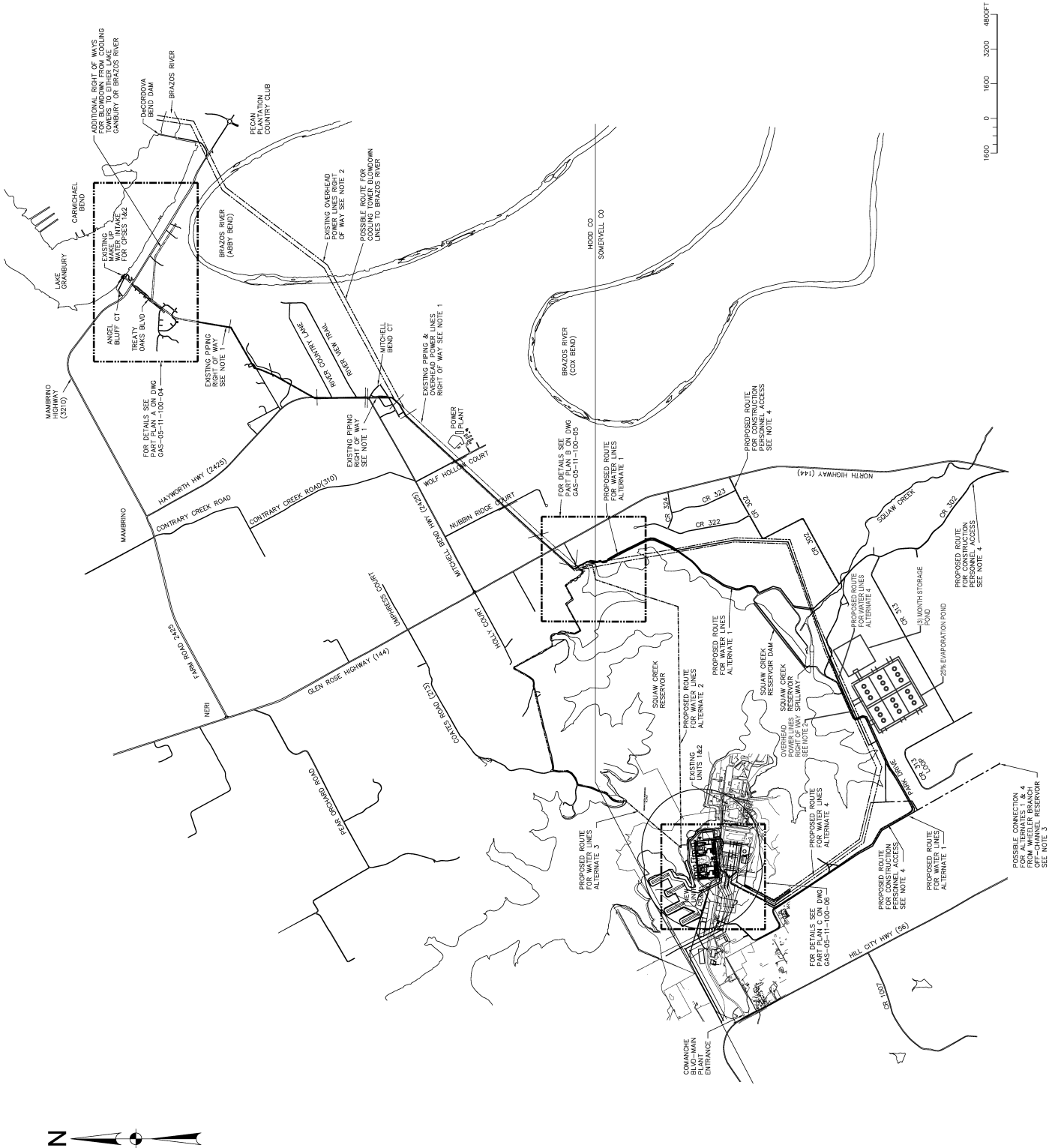


Comanche Peak Nuclear Power Plant, Units 3 & 4
COL Application
Part 3 - Environmental Report



PIPE DISTANCES

- MAKE UP WATER AND BLOWDOWN PIPING TO/FROM CPSES UN 3&4 COOLING TOWERS--
- UNIT 3 MAKE UP LINE= 6500 FT
 - UNIT 3 BLOWDOWN LINE= 6500 FT
 - UNIT 4 MAKE UP LINE= 6325 FT
 - UNIT 4 BLOWDOWN LINE= 6325 FT
- WILL BE ADJUSTED WHEN FINAL LOCATION OF COOLING TOWER AND BLOWDOWN PIPE INTO LAKE GRANBURY IS DETERMINED
- NOTES
1. INFORMATION PROVIDED BY HALFF ASSOCIATES, INC. (WWW.HALFF.COM)
 2. ROAD LOCATE AND SURVEY OUTLINES TRACED TO STATE AND LIES TOWARD AN INTERESTED PARTY (WWW.TNRS.STATE.TX.US)
 3. FROM HDR-000441B-05 481.3 DFT CHANNEL RESERVATION FOR BRAZOS G REGIONAL WATER PLAN JANUARY 2008
 4. CR 302 AND PARK DRIVE SHOULD BE UPGRADED TO ACCOMMODATE CONSTRUCTION ACCESS. REFERENCE ALSO DNG GAS-05-11-100-001.

- ROUTES FOR WATER LINES
- EQOY ROUTE 11 COXMAN AT LEAST THESE LINES:
2-42" MAKE UP WATER LINES
2-36" COOLING TOWER BLOWDOWN LINES
- ALTERNATE 1
FOLLOWS ROADS FOR EASTER CONSTR. MOST SECURE)
FOLLOWS ROADS AROUND WEST & SOUTH OF SQUAW CREEK RESERVOIR
- ALTERNATE 2
RUNS ACROSS OR THROUGH SQUAW CREEK RESERVOIR
- ALTERNATE 3
(DIFFICULT TO CONSTR. AND SECURE ACROSS 50K) FOLLOWS ROADS AROUND NORTH & EAST OF SQUAW CREEK RESERVOIR FOR EASTER CONSTR. MOST SECURE)
FOLLOWS ROADS AND POWER LINE RIGHT OF WAY ACROSS WEST & SOUTH OF SQUAW CREEK RESERVOIR
- ALTERNATE 4
FOLLOWS ROADS AND POWER LINE RIGHT OF WAY ACROSS WEST & SOUTH OF SQUAW CREEK RESERVOIR
- OPEN ITEMS
- NEED INFO FOR RIGHT OF WAYS TO SECURE FINAL CONSTRUCTION OF WATER LINES AT LAKE GRANBURY (NEW LAND PURCHASED)
 - WITH REGARD TO EXISTING RIGHT OF WAYS, WILL THERE BE ENOUGH SPACE FOR EXISTING PIPING, EXISTING POWER LINES, AND NEW PIPING, POWER LINES, NEW MAKEUP AND BLOWDOWN LINES OR WILL THEY NEED TO BE EXPANDED (MORE LAND PURCHASED)

PRELIMINARY

Figure 3.4-3 Intake and Discharge Locations (Sheet 1 of 3)

**Comanche Peak Nuclear Power Plant, Units 3 & 4
COL Application
Part 3 - Environmental Report**

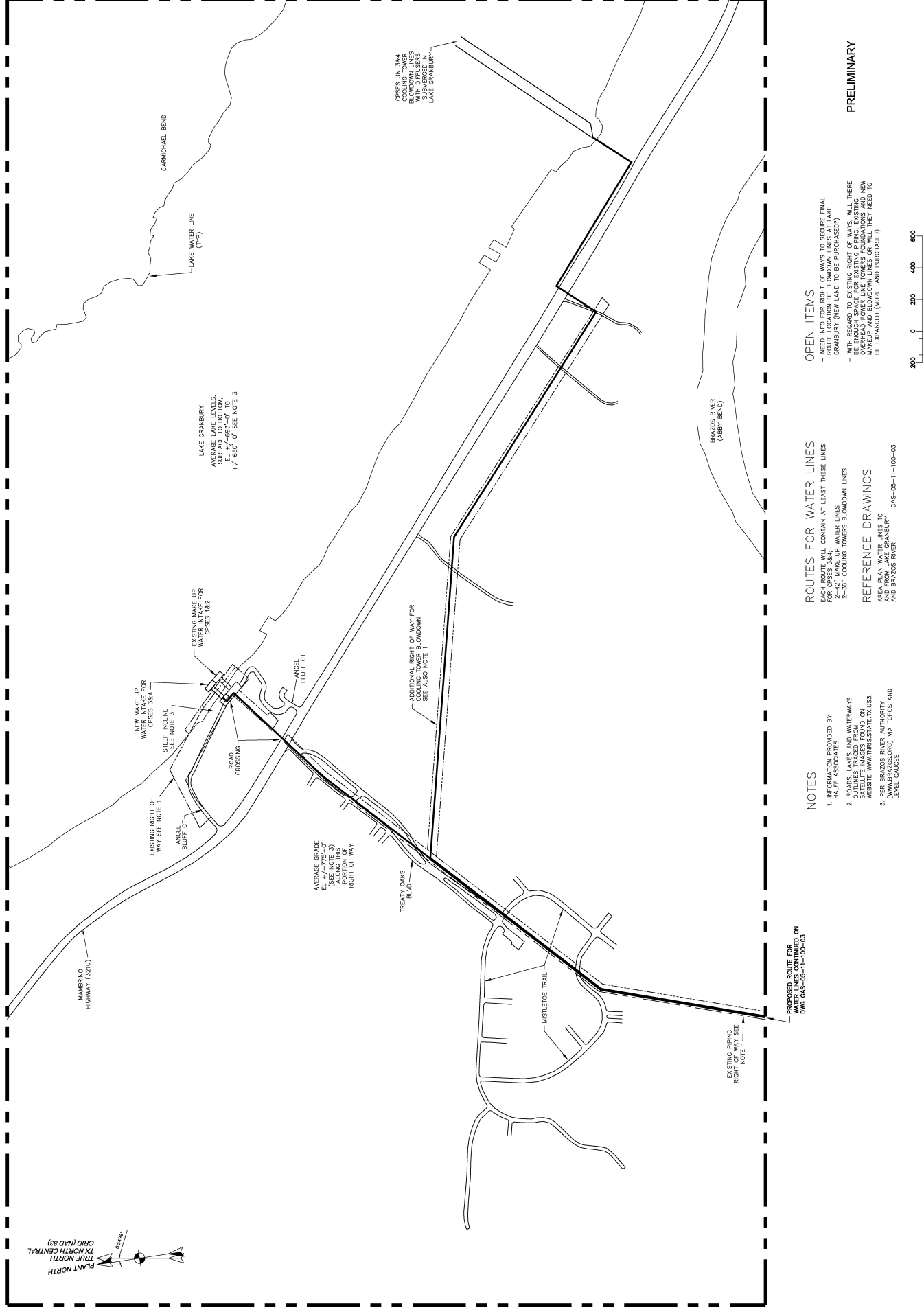


Figure 3.4-3 Intake and Discharge Locations (Sheet 2 of 3)

Part 3 - Environmental Report



Figure 3.4-3 Intake and Discharge Locations (Sheet 3 of 3)