

Proposed Turkey Point Units 6 and 7
Docket Nos. 52-040 and 52-041
L-2012-273 Enclosure 2 Page 1 of 52

Enclosure 2

Florida Power & Light Company Turkey Point Units 6 & 7
Exploratory Well Project; Permit #0293962-001-UC
Weekly Construction Summary #59 dated June 22, 2012

WEEKLY CONSTRUCTION SUMMARY



McNabb Hydrogeologic Consulting, Inc.

601 Heritage Drive, Suite 110
Jupiter, Florida 33458
Phone: 561-891-0763
Fax: 561-623-5469

June 22, 2012

MHCDEP-12-0243

Mr. Joseph May, P.G.
Florida Department of Environmental Protection
400 N. Congress Ave, Suite 200
West Palm Beach, FL 33401

**RE: Florida Power & Light Company Turkey Point Units 6 & 7 Exploratory Well
Project; Permit #0293962-001-UC
Weekly Construction Summary #59**

Dear Mr. May:

This is the fifty-ninth weekly construction summary for the above referenced project. The reporting period for this weekly construction summary began at 7:00 AM, Thursday, June 14, 2012 and ended at 7:00 AM, Thursday, June 21, 2012. Consultant and drilling contractor daily reports were prepared for this reporting period. Copies of the consultant and drilling contractor daily construction logs are attached.

During the previous reporting period the drilling contractor completed backplugging the DZMW-1 pilot hole to a depth of 1,153 feet below pad level (bpl). The drilling contractor then used a 22-inch diameter drill bit to ream the interval from 1,105 to 1,453 feet bpl. They then performed caliper and gamma ray logs on the reamed hole and began installing the 16-inch diameter casing to a depth of approximately 1,450 feet bpl. Installation of the 16-inch diameter casing was not completed prior to the end of the previous reporting period.

During this reporting period the drilling contractor completed installing the 16-inch diameter casing to a depth of 1,450 feet bpl and cemented the casing in place in three stages using a total of 443 barrels of cement. Temperature logs were performed after each cement stage as required. The drilling contractor then reamed the interval from 1,450 to 1,850 feet bpl using a 14¾-inch diameter bit before changing to a 12¾-inch diameter bit and drilling the interval from 1,850 to 1,905 feet. Deviation surveys were performed at 60-foot intervals. The borehole then underwent caliper and gamma ray logging. The well was killed with barite during the reporting period. Copies of the 16-inch casing installation summary and cementing summary sheets, deviation survey summary sheet, daily kill material log and geophysical logs are attached.

Preliminary annular pressure monitoring took place at EW-1. Pressure monitoring results indicate the annulus now meets pressure testing specifications. A preliminary annular pressure test was underway at the end of the reporting period.

There was no packer testing, well development or construction related issues at EW-1 and DZMW-1 during this reporting period.

During the next reporting period, it is anticipated that the drilling contractor will install and cement the 6 $\frac{1}{2}$ -inch diameter final casing of DZMW-1 to a depth of approximately 1,860 feet bpl. The final casing will then undergo pressure testing. At EW-1 it is anticipated that the preliminary annular pressure test will be completed and final pressure testing will take place in the presence of a Florida Department of Environmental Protection witness.

In addition, sampling of the pad monitor wells around EW-1 and DZMW-1 began on April 21, 2011 and March 20, 2012, respectively, and has been taking place on a weekly basis since the initial samplings. The EW-1 pad monitor wells were most recently sampled on June 21, 2012. The DZMW-1 pad monitor wells were most recently sampled on June 22, 2012. The most recent set of EW-1 pad monitoring well sample results available are for samples collected on June 14, 2012. The most recent set of DZMW-1 pad monitoring well sample results available are for samples collected on June 15, 2012. Copies of the EW-1 and DZMW-1 pad monitor well water quality data summary sheets are attached.

Should you have any questions regarding the above weekly construction summary, please contact David McNabb at (561) 891-0763.

Sincerely,

McNabb Hydrogeologic Consulting, Inc.

6/22/12
David McNabb, P.G.

Attachments: Consultant Daily Construction Log
Layne Christensen Company-Drilling Shift Report
EW-1 Pad Monitor Well Water Quality Data Summary Sheets
DZMW-1 Pad Monitor Well Water Quality Data Summary Sheets
DZMW-1 16-Inch Diameter Casing Installation Summary Sheet
DZMW-1 16-Inch Diameter Casing Cementing Summary Sheet
DZMW-1 Deviation Survey Summary Sheet
DZMW-1 Daily Kill Material Log
DZMW-1 Geophysical Logs

Cc: George Heuler/FDEP-Tallahassee
Emily Richardson/SFWMD
Matthew Raffenberg/FPL
David Holtz/HCE

Joe Haberfeld/FDEP-Tallahassee
Ron Reese/USGS
David Paul/FGS



McNabb Hydrogeologic Consulting, Inc.



Daily Construction Log

Date: June 14, 2012
Project: FPL Turkey Point EW
Contractor: Layne Christensen Company
Starting Depth: 1,453 feet bpl
Weather Day: Cloudy, Hot
Weather Night: NA
Activity: Casing Installation, Cementing

FDEP UIC Permit #: 0293962-001-UC
Well No.: DZMW-1
Bit Diameter: NA
Ending Depth: 1,453 feet bpl
Recorded By: Marty Clasen/Sally Durall

CONSTRUCTION ACTIVITIES

- 0600 Yesterday, the drilling contractor conducted caliper and gamma ray geophysical logging and began installing the 16-inch diameter steel casing. The 16-inch casing will be installed to a depth of 1,450 feet below pad level (bpl). The drilling contractor has installed twenty-seven joints of casing so far.
- 0715 The drilling contractor has installed the twenty-eighth casing joint.
- 0725 The drilling contractor conducted a deviation survey at a depth of 1,400 feet bpl. The result was 0.4 degrees.
- 0800 The drilling contractor has installed the twenty-ninth casing joint.
- 0835 The drilling contractor has installed the thirtieth casing joint.
- 0910 The drilling contractor has installed the thirty-first casing joint.
- 0950 The drilling contractor has installed the thirty-second casing joint.
- 1025 The drilling contractor has installed the thirty-third casing joint.
- 1029 The laboratory technician from Florida Spectrum Environmental Services, Inc. is onsite to sample the four pad monitoring wells for EW-1.
- 1055 The drilling contractor has installed the thirty-fourth casing joint.
- 1125 The drilling contractor has installed the thirty-fifth casing joint.
- 1200 The drilling contractor has installed the thirty-sixth casing joint.
- 1250 The drilling contractor has installed the thirty-seventh (header) casing joint. The 16-inch steel casing has been installed to a depth of 1,450 feet bpl.
- 1330 The drilling contractor begins to weld on the gussets in preparation for cementing the casing in place.
- 1500 The drilling contractor is preparing to trip inside the 16-inch diameter casing with the cement tremie pipe.
- 1610 The drilling contractor begins to trip inside the 16-inch diameter casing with the cement tremie pipe.
- 1720 The drilling contractor has completed tripping inside the casing with the cement tremie pipe. The cement plan is to pressure grout 167 barrels of neat cement.
- 1825 Begin stage 1 cementing.
- 1910 Complete cement stage 1 using 168 barrels of neat cement.
- 0530 During the night shift the drilling contractor waited on the cement to set, tagged the cement inside the casing at the depth of 1,446 feet bpl, tripped the cement tremie pipe



McNabb Hydrogeologic Consulting, Inc.



out of the inside of the casing, and tripped the cement pipe in the annulus between the 24-inch and 16-inch diameter casings. The drilling contractor is preparing to perform temperature logging for cement stage 1.

- 0555 The drilling contractor begins to trip inside the 16-inch diameter casing with the temperature tool and begins temperature logging from pad level.
- 0620 Complete temperature logging. The top of cement is estimated at the depth of 1,050 feet bpl.
- 0640 The drilling contractor verifies the top of cement tag using the cement tremie pipe to tag the top of cement at the depth of 1,053 feet bpl.
- 0700 The drilling contractor is preparing to pump cement stage 2. The cement plan is to pump 145 barrels of 12% bentonite blend cement.



McNabb Hydrogeologic Consulting, Inc.



Daily Construction Log

Date: June 15, 2012
Project: FPL Turkey Point EW
Contractor: Layne Christensen Company
Starting Depth: 1,453 feet bpl
Weather Day: Cloudy, Hot
Weather Night: NA
Activity: DZMW-1 Cementing Casing and EW-1 Final Temperature Logging

FDEP UIC Permit #: 0293962-001-UC
Well No.: EW-1 and DZMW-1
Bit Diameter: NA
Ending Depth: 1,453 feet bpl
Recorded By: Sally Durall

CONSTRUCTION ACTIVITIES

- 0700 Yesterday, the drilling contractor completed installation of the DZMW-1 16-inch diameter casing to a depth of 1,450 feet below pad level (bpl) and completed cementing stage 1. During yesterday's night shift, the drilling contractor completed temperature logging and tagged the top of cement using the cement tremie pipe at 1,053 feet bpl for stage 1 cement. The drilling contractor is currently preparing for stage 2 cementing. The cement plan is to pump 145 barrels of 12% bentonite blend cement.
- 0800 Begin stage 2 cementing.
- 0840 Complete cement stage 2 using 145 barrels of 12% bentonite blend cement.
- 0900 At EW-1, the drilling contractor is preparing to perform final temperature logging.
- 0935 The drilling contractor relieves the pressure from the EW-1 annulus prior to beginning to cut the weld on the top of the 18-inch diameter stainless steel transition piece (top of wellhead). The initial pressure on the annulus was 30 pounds per square inch (psi).
- 0945 Approximately 11 gallons of fluid (1% Baracor solution) was released from the annulus, and contained in 5 gallon buckets during the relief of the pressure on the annulus. The fluid was transferred to the frac tank with fluids containing Baracor. The drilling contractor is currently raising a tarp on the west side of the containment pad to contain any fluids that could spray out from the injection well when the drilling contractor cuts the weld at the top of EW-1 wellhead.
- 1030 The drilling contractor begins to trip inside the injection tubing and open hole with a temperature logging tool to perform the final temperature log at EW-1.
- 1035 Florida Spectrum Environmental Services, Inc. is on site to sample the pad monitor wells located around the DZMW-1 drilling site.
- 1105 The temperature logging tool tags the bottom of the open hole at EW-1 at the depth of 3,231 feet bpl. The temperature logging is complete and the drilling contractor begins to trip the logging tool out of the well.
- 1135 The temperature logging tool is at land surface.
- 1200 The drilling contractor prepares the EW-1 wellhead for the welding to be completed which will take place tomorrow morning.
- 1345 The drilling contractor is performing general site maintenance while waiting for the cement to set up at DZMW-1.



McNabb Hydrogeologic Consulting, Inc.



- 1530 The drilling contractor continues to perform general site maintenance while waiting for the cement to set up.
- 1705 The drilling contractor begins to trip inside the DZMW-1 16-inch diameter casing with the temperature tool to log the temperature for cement stage 2.
- 1715 Complete temperature logging. The top of cement is estimated at the depth of 495 feet bpl.
- 2030 The drilling contractor prepares to tag the top of stage 2 cement using the cement tremie pipe.
- 2125 The top of cement for stage 2 is tagged at the depth of 496 feet bpl. The drilling contractor plans to pump 137 barrels of 12 % bentonite blend cement to bring the cement to surface.
- 2200 Begin stage 3 cementing.
- 2225 Complete cement stage 3 using 130 barrels of 12% bentonite blend cement. Cement returns were observed at surface.
- 2300 The drilling contractor has tripped the cement tremie pipe out of the hole and will be performing general site maintenance throughout the night shift. The cement will be allowed to cure for 24 hours without disturbing the casing. They will begin preparing for reaming below the 16-inch diameter casing.



McNabb Hydrogeologic Consulting, Inc.



Daily Construction Log

Date: June 16, 2012
Project: FPL Turkey Point EW
Contractor: Layne Christensen Company
Starting Depth: 1,453 feet bpl
Weather Day: Cloudy, Hot
Weather Night: NA
Activity: Preparing for Reaming at DZMW-1 and EW-1 Pressure Monitoring

FDEP UIC Permit #: 0293962-001-UC
Well No.: EW-1 and DZMW-1
Bit Diameter: NA
Ending Depth: 1,453 feet bpl
Recorded By: Sally Durall

CONSTRUCTION ACTIVITIES

- 0900 The drilling contractor is welding the stainless steel flanges on the wellhead at EW-1. The drilling contractor plans to perform annular pressure monitoring at EW-1 by noon today.
- 1200 The drilling contractor is preparing for pressure monitoring of the EW-1 annulus.
- 1600 The welding is near completion at EW-1 wellhead.
- 1645 The welding is complete.
- 1710 The drilling contractor begins to pressurize the annulus to perform a pressure monitoring.
- 1735 The drilling contractor pressurized the annulus to 156 pounds per square inch (psi).
- 1740 Begin pressure monitoring with an initial pressure of 156 psi.
- 1840 The pressure reading is 153 psi which is a 3 psi loss in one hour.
- 1940 The pressure reading is 151.5 psi which is a loss of 1.5 psi in the second hour and 4.5 psi loss over the 2 hours of pressure monitoring. Each one hour interval successfully passes the 5% allowable pressure gain or loss which is 7.8 psi and 7.65, respectively.
- 1950 The drilling contractor begins to release the pressure from the annulus and contains the fluid released from the annulus to 5 gallon buckets.
- 2005 The drilling contractor released the pressure on the annulus to 40 psi. Thirty-five gallons of fluid from the annulus was released and placed in the frac tank with fluids containing Baracor.
- 2030 The drilling contractor is preparing to ream the backplugged DZMW-1 pilot hole from the base of the 16-inch diameter casing.



McNabb Hydrogeologic Consulting, Inc.



Daily Construction Log

Date: June 17, 2012

Project: FPL Turkey Point EW

Contractor: Layne Christensen Company

Starting Depth: 1,453 feet bpl

Weather Day: NA

Weather Night: NA

Activity: Reaming at DZMW-1

FDEP UIC Permit #: 0293962-001-UC

Well No.: DZMW-1

Bit Diameter: 14¾-inch

Ending Depth: 1,592 feet bpl

Recorded By: David McNabb

CONSTRUCTION ACTIVITIES

The drilling contractor reamed the DZMW-1 backplugged pilot hole over the interval from 1,453 to 1,592 feet below pad level (bpl) using a 14¾-inch diameter bit. Deviation surveys were performed at depths of 1,460 and 1,520 feet bpl with results of 0.3 and 0.1 degrees from vertical, respectively.



McNabb Hydrogeologic Consulting, Inc.



Daily Construction Log

Date: June 18, 2012

Project: FPL Turkey Point EW

Contractor: Layne Christensen Company

Starting Depth: 1,592 feet bpl

Weather Day: NA

Weather Night: NA

Activity: Reaming at DZMW-1

FDEP UIC Permit #: 0293962-001-UC

Well No.: DZMW-1

Bit Diameter: 14¾-inch

Ending Depth: 1,793 feet bpl

Recorded By: David McNabb

CONSTRUCTION ACTIVITIES

The drilling contractor reamed the DZMW-1 backplugged pilot hole over the interval from 1,592 to 1,793 feet below pad level (bpl) using a 14¾-inch diameter bit. Deviation surveys were performed at depths of 1,580, 1,640, 1,700 and 1,760 feet bpl with results of 0.4, 0.2, 0.3 and 0.2 degrees from vertical, respectively.



McNabb Hydrogeologic Consulting, Inc.



Daily Construction Log

Date: June 19, 2012

Project: FPL Turkey Point EW

Contractor: Layne Christensen Company

Starting Depth: 1,793 feet bpl

Weather Day: NA

Weather Night: NA

Activity: Reaming at DZMW-1

FDEP UIC Permit #: 0293962-001-UC

Well No.: DZMW-1

Bit Diameter: 14¾-inch and 12¼-inch

Ending Depth: 1,852 feet bpl

Recorded By: David McNabb

CONSTRUCTION ACTIVITIES

The drilling contractor reamed the DZMW-1 backplugged pilot hole over the interval from 1,793 to 1,850 feet below pad level (bpl) using a 14¾-inch diameter bit. They then switched to a 12¼-inch diameter bit and began reaming from a depth of 1,850 feet bpl. They had reached a depth of 1,852 by the end of the night shift.



McNabb Hydrogeologic Consulting, Inc.



Daily Construction Log

Date: June 20, 2012
Project: FPL Turkey Point EW
Contractor: Layne Christensen Company
Starting Depth: 1,852 feet bpl
Weather Day: Cloudy, Warm, Rain
Weather Night: Cloudy, Rain
Activity: Reaming and Geophysical Logging

FDEP UIC Permit #: 0293962-001-UC
Well No.: DZMW-1
Bit Diameter: 12 1/4-inch
Ending Depth: 1,905 feet bpl
Recorded By: Sally Durall

CONSTRUCTION ACTIVITIES

- 1800 Yesterday, the drilling contractor reamed the backplugged DZMW-1 pilot hole with a 14 3/4-inch diameter drilling bit from the depth of 1,794 feet to 1,850 feet below pad level (bpl), and then began to drill out the pilot hole using a 12 1/4-inch diameter drilling bit from the depth of 1,850 feet 1,852 feet bpl. Today, the drilling contractor completed drilling to the depth of 1,905 feet bpl and performed deviation surveys at the depths of 1,820 and 1,880 feet bpl with results of both at 0.4 degree from vertical for both surveys. The well was killed prior to tripping out of the borehole with the drill bit. The drilling contractor is currently tripping out of the borehole with the 12 1/4-inch diameter bit.
- 1900 The drilling contractor continues to trip out of the borehole with the 12 1/4-inch diameter drilling bit.
- 1910 The geophysical logging subcontractor (MV Geophysical) is on site.
- 1930 The drilling bit is on the rig floor and the drilling contractor is rigging up to perform caliper and gamma ray logs on the borehole.
- 2005 The geophysical logging subcontractor begins trip in the borehole with the caliper and gamma ray logging tool.
- 2025 The logging tool tags the bottom of the borehole at the depth of 1,905 feet bpl. Begin logging caliper and gamma-ray up hole.
- 2050 The caliper and gamma-ray logging is complete.
- 2200 MV Geophysical is off site.
- 2330 The drilling contractor will be removing the drill pipe from the drilling rig floor during the night shift.
- 0630 At EW-1, the drilling contractor pressurizes the annulus to 160 pounds per square inch (psi) in preparation for performing the final pressure test with Florida Department of Environmental Protection as witness.
- 0640 Begin a preliminary pressure test with the initial pressure at 160.5 psi.
- 0700 The drilling contractor is performing general site maintenance.



MW-1

DAT

6-14-72

JOB

11721-1405-10000

...and the value of

CPA

Proposed Turkey Point Units 6 and 7
Docket Nos. 52-040 and 52-041
L-2012-273 Enclosure 2 Page 13 of 52

EQUIPMENT DEPLOYED TODAY

JOB SITE LOCATION

T. D.

DAILY ACCOUNTING OF ACTIVITIES BY ITEM #

PERSONNEL EMPLOYED TODAY

Crew Assignment	Employee - Full Name	Per Diem? (X)	Onsite Hours	Offsite Hours	Total Hours
Miller	BOSIT GULOMOV	45	13		13
A.D	ANDREY POPOV	45	12		12
P.V	PAUL VAUGHN	45	12		12
V.M	VICTOR MOISEYEV	45	13		13
G.H	GEORGE HAGA	—	4		4

MATERIALS USED TODAY

Quantity	Description
	SAFETY MTC:
	HEAT DISORDERS AND HEALTH EFFECTS:
	VEHICLE SAFETY:
	HAND SAFETY: PINCH POINT H.I.R.A. PPE: LOADER SAFETY:

Description	Unit #	Status
FDW 200	28605	w/A
1989 Mack	18000	w/A
Dumping Truck		
CEMENT	28145	S/B
UNIT		

Working	WK	Mobilization	MS
Standby	SB	Demobilization	DM
Down in Shop	DS	Available in Yard	AY
Down on Site	DN	Available on Job	AV

TIME OF ACTIVITY BY ITEM #

[illegible]

Item #	Cost Code	Labor Activity	Hours
1	10000	Short Duration Job	
2	11100	Onville Mob-Demob	
3	11150	Job Preparation	
4	11200	Safety Meetings	
5	0005	Training - Overhead	
6	0006	Shop - Overhead	
7	0007	Maintenance - Overhead	
8	11250	Training - Job Chargeable	
9	11300	Site Cleanup	
10	14300	Disinfection and Chlorination	
11	15050	Permanent Pump Install Well Head/Pitless	
12	15100	Furnish & Install Pump, Motor, Appurtenances	
13	15150	Furnish & Install Vault	
14	15200	Furnish & Install Discharge Piping	
15	15250	Furnish & Install Well Head Platform/Pad	
16	16050	Build & Treat Equipment Construct/Install/Layout Old	
17	16100	Install Building	
18	16150	Concrete Work	
19	16200	Install Treatment Equipment	
20	16250	Install Misc. Equipment	
21	16300	Painting	
22	16350	Install Piping	
23	19050	Waste Activities Mob/Demob	
24	19100	Shop	
25	19150	Administration	
26	19550	Other Activities Standby	
27	19600	Visiting for Lost/Broken Tooling	
28	19950	Change Order Activities	
29	88000	Equipment Repairs	
30	90170	Damages	
31	90200	Job Superintendent	
32	90210	Assistant Job Superintendent	
33	90220	Project Manager	
34	90230	Assistant Project Manager	
35	90240	Job Site Admin Assistant	
36	90250	Project Engineer	
37	90280	Foreman	
		Lunch	
		TOTAL HOURS	

COMMENTS - EVENTS - CONDITIONS - CHANGES - OTHER INFORMATION

RUN CASING: # 28 - TO - 37; RIG UP CEMENT:
- RI. H CEMENT TUBING @ 1446' BPL. STAR PUMP CEMENT:

Get Online Signatures
 1-800-800-8000

6-14-12

Edwin Signature

DM:

Secretary's Message

Drugs

DAYBOUL

LAYNE CHRISTENSEN COMPANY - NON-DRILLING/SERVICE SHIFT REPORT

CLIENT **FPL**

CLIENT

Proposed Turkey Point Units 6 and 7

Docket Nos. 52-040 and 52-041

L-2012-273 Enclosure 2 Page 14 of 52

EWING

6/4/12
Thurs. Night

JOB # 11771.1405.10000

JOBS

JOB SITE LOCATION

Turkey, Arabia

DAILY ACCOUNTING OF ACTIVITIES BY ITEM #

PERSONAL IMPROVEMENT TODAY

EQUIPMENT DEPLOYED TODAY

Class Assignment	Employee - Full Name	Per Diem? (Y)	Dress Code	Off Duty Hours	Total Hours
Drill	Michael A. Ramirez	45	12		12
VI	Vlad Ishimov	45	12		12
JM	James McDonnell	45	12		12
BF	Bob Feetham	45	12		12

MATERIALS USED TODAY

Quantity	Description
	Safety Measures
	① Bad weather
	② 2 ³ / ₈ " tubing trip on Backside
	PPE, electrical hazards, overhead dangers, pinch points, loader safety,

Description		Unit #	Status
FDW-200		286057K	
'89 Mack dump		18000 5/5	
Cement mixer		28145 1/1	
Working	WK	Mobilization	MB
Standby	SB	Demobilization	DM
Down in Shop	DS	Available in Yard	AY
Down on Site	DN	Available on Job	AV

TIME OF ACTIVITY BY ITEM

[illegible]

Item #	Cost Code	Labor Activity	Hours
1	10000	Short Duration Job	
2	11000	Onsite Mob Demob	
3	11150	Job Preparation	
4	11200	Safety Meetings	
5	0005	Training - Overhead	
6	0006	Shop - Overhead	
7	0007	Maintenance - Overhead	
8	11250	Training - Job Chargeable	
9	11300	Site Cleanup	
10	14300	Disinfection and Chlorination	
11	15050	Permanent Pump Install Well Head/Pitless	
12	15100	Furnish & Install Pump, Motor, Apparatuses	
13	15150	Furnish & Install Valve	
14	15200	Furnish & Install Discharge Piping	
15	15250	Furnish & Install Wellhead Platform/Pad	
16	16050	Build & Erect Equipment Construct/Install Layout Bldg	
17	16100	Install Dividing	
18	16150	Concrete Work	
19	16200	Install Treatment Equipment	
20	16250	Install Misc Equipment	
21	16300	Painting	
22	16350	Install Piping	
23	19050	Offsite Activities Mob/Demob	
24	19100	Shop	
25	19150	Administration	
26	19550	Other Activities Standby	
27	19600	Fishing for Lost/Broken Tooling	
28	19650	Change Order Activities	
29	88000	Equipment Repairs	
30	90170	Drumages	
31	90200	Job Superintendent	
32	90210	Assistant Job Superintendent	
33	90220	Project Manager	
34	90230	Assistant Project Manager	
35	90240	Job Site Admin Assistant	
36	90250	Project Engineer	
37	90260	Foreman	
		Lunch	
		TOTAL HOURS	

168 691

COMMENTS - EVENTS - CONDITIONS - CHANGES - OTHER INFORMATION

Finnish Pressure group cement pump. Clean Rig pad. ~~Repacked~~ Filled up Rental compressor w/ fuel. Hooked up & tested our Air compressor. Tag cement at 1446.57' bpl. Trip out of hole cement tubing, 24 Stds. Cut hole for backside attached kirklin rubber fitting. Trip in Backside w/ cement tubing 18 Stds. Tag backside at 1053.55' bpl. Log/temp log.

6-15-12

Date:

Client's Signature

Date: _____

Source: *Journal of the American Medical Association*, 1997, 277:1033-1037.

Dai

PAYROLL



LAYNE CHRISTENSEN COMPANY - NON-DRILLING/SERVICE SHIFT REPORT

CLIENT

MW-1

DATE

6-15-12
FRI DAYS

JOB #

11771-1405-10000

JOB SITE NAME

EPL

Proposed Turkey Point Units 6 and 7
Docket Nos. 52-040 and 52-041
L-2012-273 Enclosure 2 Page 15 of 52

JOB SITE LOCATION

T.P.

PERSONNEL EMPLOYED TODAY

Crew Assignment	Employee - Full Name	Per Diem? (X)	Onsite Hours	Offsite Hours	Total Hours
Miller	Bosir Gulomov	45	13		13
A.D	ANDREY DOPOV	45	12		12
V.M	VICTOR MOISEYEV	45	12		12

EQUIPMENT DEPLOYED TODAY

Description	Unit #	Status
FDW-200	28605	W/K
1989 MAC	18000	S/B
Dump TRUCK		
CEMENT	28145	W/K
UNIT		
Working	WK	Mobilization
Standby	SB	Demobilization
Down in Shop	DS	Available in Yard
Down on Site	DN	Available on Job

DAILY ACCOUNTING OF ACTIVITIES BY ITEM

Item #	Cost Code	Labor Activity	Hours
1	10000	Short Duration Job	
2	11100	Finite Mob Demob	
3	11150	Job Preparation	
4	11200	Safety Meetings	
5	0005	Trailing - Overhead	
6	0006	Shop - Overhead	
7	0007	Maintenance - Overhead	
8	11250	Trailing - Job Chargeable	
9	11300	Site Cleanup	
10	14300	Offsite on and Offsite on	
11	15050	Permanent Pumping @ Well Head/Well	
12	15100	Uninstall Pump, Motor, Appurtenances	
13	15150	Uninstall Valve	
14	15200	Uninstall Discharge Piping	
15	15250	Uninstall Well Head Flange/Pad	
16	16050	Install & Test Equipment Construct @ Install Layout @ dig	
17	16100	Install Building	
18	16350	Concrete Work	
19	16200	Install Treatment Equipment	
20	16250	Install Misc Equipment	
21	16300	Painting	
22	16350	Install Piping	
23	19050	Offsite Activities Mob/Demob	
24	19100	Shop	
25	19150	Administration	
26	19550	Other Activities Standby	
27	19600	Waiting for Log/Broken Tooling	
28	19650	Change Order Activities	
29	88000	Equipment Repairs	
30	90170	Damages	
31	90200	Job Support Incident	
32	90210	Assistant Job Superintendent	
33	90270	Project Manager	
34	90230	Assistant Project Manager	
35	90240	Job Site Administration	
36	90250	Project Engineer	
37	90260	Foreman	
		Lunch	
TOTAL HOURS			

MATERIALS USED TODAY

Quantity	Description
	SAFETY MTR.
①	BLOODBORNE PATHOGENS:
	HAND SAFETY: PINCH POINT
	HIGH PRESS LINE: LOADER
	SAFETY:

TIME OF ACTIVITY BY ITEM

From	To	Activity	Item #
		AM PM	
		AM PM	
		AM PM	
		AM PM	
		AM PM	
		AM PM	
		AM PM	
		AM PM	
		AM PM	
		AM PM	
		AM PM	
		AM PM	
		AM PM	
		AM PM	
		AM PM	
		AM PM	
		AM PM	
		AM PM	

COMMENTS - EVENTS - CONDITIONS - CHANGES - OTHER INFORMATION

PUMP CEMENT @ 147 BBL - 12 1/2 GAL; RUN TEMP LOG MW = HELPING
 EPL's work MW; 5pm TEMP LOG MW-1; 5:30pm TD - 6:30pm LIGHTNING
 HOUSEKEEPING & SITE CLEAN UP.

6-15-12

Date

Crew's Signature

PAYROLL

Date

Supervisor's Signature

Date

LAYNE CHRISTENSEN COMPANY - NON-DRILLING/SERVICE SHIFT REPORT

CLIENT **FDC**

JOB SITE NAME *MW1*

Proposed Turkey Point Units 6 and 7
Docket Nos. 52-040 and 52-041
L-2012-273 Enclosure 2 Page 16 of 52

DAT

6/15/12
Friday Night Shift

JOB

11771.1405.10000
Turkey Point

JOBS TE LOCATO

DAILY ACCOUNTING OF ACTIVITIES BY ITEM

PERSONNEL EMPLOYED TODAY

STUDYING AND RESEARCHING THE TEXT

Crew Assignment	Employee - Full Name	Per Diem? (X)	Onsite Hours	Offsite Hours	Total Hours
Driller	George Haga	45	12		12
SW	Juan Nieto	45	12		12
SW	Paul Vaughan	45	12		12
BF	Bob Feetham	45	8		8

MATERIALS USED TODAY

[illegible]

Description		Unit #	Q# / us
FDW 200			w/k
1989 MAC			
Dump truck			s/B
Cement Unit			w/k
Working	WB	Mobilization	MB
Standby	SB	Demobilization	DM
Down in Shop	DS	Available in Yard	AY
Down on Site	DN	Available on Job	AV

TIME OF ACTIVITY BY ITEM

[illegible]

Item #	Cost Code	Labor Activity	Hours
1	10000	Short Duration Job	
2	11100	Mobile Mob-Demo	
3	11150	Job Preparation	
4	11200	Daily Meetings	
5	0005	Training - Overhead	
6	0006	Shop - Overhead	
7	0007	Maintenance - Overhead	
8	11250	Training Job Chargeable	
9	11300	Site Clean-up	
10	14300	Inspection and Classification	
11	15050	Permanent Pumping Well Head/Access	
12	15100	Furnish Electrical Pump Motor, Appurtenances	
13	15150	Furnish Electrical Vault	
14	15200	Furnish Electrical Discharge Piping	
15	15250	Furnish Electrical Well Head Piping/Pad	
16	16050	Build & Treat Equipment Construction Layout Bldg	
17	16100	Install Building	
18	16150	Concrete Work	
19	16200	Install Treatment Equipment	
20	16250	Install Misc. Equipment	
21	16300	Painting	
22	16350	Install Piping	
23	19050	Mobile Activities Mob/Demo	
24	19100	Shop	
25	19150	Administration	
26	19550	Other Activities Standby	
27	19600	Waiting for Load/Unload Tonnage	
28	19650	Change Order Activities	
29	88000	Equipment Repairs	
30	90170	Damages	
31	90200	Job Superintendent	
32	90210	Assistant Job Superintendent	
33	90220	Project Manager	
34	90230	Assistant Project Manager	
35	90240	Job Site Admin Assistant	
36	90250	Project Engineer	
37	90260	Foreman	
		Unlunch	
		TOTAL HOURS	

COMMENTS - EVENTS - CONDITIONS - CHANGES - OTHER INFORMATION

Tripped in and tagged @ 496 bbl. air up tubing to pump
Cement. Pumped 130 Bbls of 12% cement to surface. back flush ten inch
valve to well. Rigged down cement equipment, move tubing & start to clean cement
OK pad. 0400 shut down pumps clean pad slurry pit 2" inches before a hole-in-wall
Get back ground cement ~~start~~ pumping slurry for 1 1/2 hours catch turbidity sample every 30 min

© 2000 by John Wiley & Sons, Inc.

Client's Signature

1998

Supernaturalism

Figure 1

PAYROLL

LAYNE CHRISTENSEN COMPANY - DRILLING SHIFT REPORT

CLIENT MW-1 Proposed Turkey Point Units 6 and 7
 Docket Nos. 52-040 and 52-041
 L-2012-273 Enclosure 2 Page 17 of 52
 JOBSITE NAME FPL

DATE 6-16-2012
SAT DAYS

JOB # 11771-1405-10000

JOBSITE LOCATION T.P.

PERSONNEL EMPLOYED TODAY

Crew Assignment	Employee - Full Name	Per Diem? (X)	Onsite Hours	Offsite Hours	Total Hours
Driller	BOSIL GULOMOV	45	13		13
A.P.	ANDREY POPOV	45	12		12
V.M.	VICTOR MOISEYEV	45	12		12

EQUIPMENT DEPLOYED TODAY

Description	Unit #	Status
FDW-200	28605	w/k
1989 MACK	18000	w/k
DUMP TRUCK		
CEMENT	28145	S/B.
UNIT		
Working	WK	Mobilization
Standby	SB	Demobilization
Down in Shop	DS	Available in Yard
Down on Site	DN	Available on Job

MATERIALS USED TODAY

Quantity	Description
	SAFETY MTG!
	HOUSEKEEPING!
	HAND SAFETY!
	PPE! H.I.R.A. PINCH POINT
	LOADER SAFETY!

TIME OF ACTIVITY BY ITEM

From	To	Circle One	Item #
		AM PM	
		AM PM	
		AM PM	
		AM PM	
		AM PM	
		AM PM	
		AM PM	
		AM PM	
		AM PM	
		AM PM	
		AM PM	
		AM PM	
		AM PM	
		AM PM	
		AM PM	

COMMENTS - EVENTS - CONDITIONS - CHANGES - OTHER INFORMATION

RUN DUMP TRUCK (14): HELPING ELLIS WORK FW:
 CUT AND REMOVE CASING & HEADER PLATES;
 INSTALL REGULAR HEADER PLATES; READY FIBERGLASS CASING;
 START PRETEST ON INJECTION WELL → BEGIN PRESSURIZING @ 5:30pm

DAILY ACCOUNTING OF ACTIVITIES BY ITEM

Item #	Cost Code	Labor Activity	Hours
1	10000	Short Duration Job	
2	11100	Onsite Mob/Demob	
3	11150	Job Preparation	
4	11200	Safety Meeting	
5	0005	Training - Overhead	
6	0006	Shop - Overhead	
7	0007	Maintenance - Overhead	
8	11250	Training - Job Chargeable	
9	11300	Site Clean up	
10	11350	Install Sound Walls	
11	11400	Install Decon Pad	
12	11450	Install Surface Casing	
13	11500	Install Roadway & Drill Pad	
14	12050	Test Hole Drilling	
15	12100	Geophysical Logging & Other Testing	
16	12150	Aquifer Zone Testing	
17	12200	Borehole Abandonment	
18	13050	Production Well Installation	
19	13100	Install Conductor Pipe	
20	13150	Drill Pilot Hole	
21	13200	Geophysical Logging & Other Testing	
22	13250	Aquifer Zone Testing	
23	13300	Borehole Abandonment/Cement Plugs	
24	13350	Reaming	
25	13400	Under Reaming	
26	13450	Install Casing	
27	13500	Install Screen	
28	13550	Gravel Pack The Well	
29	13600	Install Annular Seal	
30	13650	Water Watching	
31	14050	Well Development Air Lift and Swab	
32	14100	Disposal of Fluids & Cuttings	
33	14150	Furnish & Install Test Pump and Discharge	
34	14200	Development Pumping	
35	14250	Test Pumping	
36	14300	Disinfection and Chlorination	
37	19050	Offsite Activities Mob/Demob	
38	19100	Shop	
39	19150	Administration	
40	19550	Other Activities Standby	
41	19600	Fishing for Lost/Broken Tooling	
42	19650	Change Order Activities	
43	88000	Equipment Repairs	
44	90170	Damages	
45	90200	Job Superintendent	
		Lunch	
TOTAL HOURS			

Signature _____
 Date 6-16-12.

Date

Client's Signature

DAYTON

Date



LAYNE CHRISTENSEN COMPANY - DRILLING SHIFT REPORT

CLIENT FPL Proposed Turkey Point Units 6 and 7
Docket Nos. 52-040 and 52-041
JOBSITE NAME mw1 L-2012-273 Enclosure 2 Page 18 of 52

DATE Co/14/12
Sat Night Shift

JOB # 11771.1405.18000
JOBSITE LOCATION Turkey Pt

PERSONNEL EMPLOYED TODAY

Crew Assignment	Employee - Full Name	Per Diem? (X)	Onsite Hours	Offsite Hours	Total Hours
Driller	George Haga	45	12		12
JW	John Wirth	45	12		12
PV	Paul Varghese	45	12		12

EQUIPMENT DEPLOYED TODAY

Description	Unit #	Status
FDW 200	2860	W/C
1989 Mac	18000	S/B
Dump truck		
Cement Unit	2814	S/B
Working	WK	Mobilization
Standby	SB	Demobilization
Down in Shop	DS	Available in Yard
Down on Site	DN	Available on Job

DAILY ACCOUNTING OF ACTIVITIES BY ITEM

Item #	Cost Code	Labor Activity	Hours
1	10000	Short Duration Job	
2	11100	Onsite Mob/Demob	
3	11150	Job Preparation	
4	11200	Safety Meeting	
5	0005	Training - Overhead	
6	0006	Shop - Overhead	
7	0007	Maintenance - Overhead	
8	11250	Training - Job Chargeable	
9	11300	Site Clean up	
10	11350	Install Sound Walls	
11	11400	Install Decon Pad	
12	11450	Install Surface Casing	
13	11500	Install Roadway & Drill Pad	
14	12050	Test Hole Drilling	
15	12100	Geophysical Logging & Other Testing	
16	12150	Aquifer Zone Testing	
17	12200	Borehole Abandonment	
18	13050	Production Well Installation	
19	13100	Install Conductor Pipe	
20	13150	Drill Pilot Hole	
21	13200	Geophysical Logging & Other Testing	
22	13250	Aquifer Zone Testing	
23	13300	Borehole Abandonment/Cement Plugs	
24	13350	Reaming	
25	13400	Under Reaming	
26	13450	Install Casing	
27	13500	Install Screen	
28	13550	Gravel Pack The Well	
29	13600	Install Annular Seal	
30	13650	Water Watching	
31	14050	Well Development Air Lift and Swab	
32	14100	Disposal of Fluids & Cuttings	
33	14150	Furnish & Install Test Pump and Discharge	
34	14200	Development Pumping	
35	14250	Test Pumping	
36	14300	Disinfection and Chlorination	
37	19050	Offsite Activities Mob/Demob	
38	19100	Shop	
39	19150	Administration	
40	19550	Other Activities Standby	
41	19600	Fishing for Lost/Broken Tooling	
42	19650	Change Order Activities	
43	88000	Equipment Repairs	
44	90170	Damages	
45	90200	Job Superintendent	
		Lunch	
		TOTAL HOURS	

MATERIALS USED TODAY

Quantity	Description
	Safety Meeting
	Touch Safety
	Tong Safety
	Safety Topic
	PPE, Pinch points; HIRH
	Hand Safety, Eye protection

TIME OF ACTIVITY BY ITEM

From	To	Circle One	Item #
		AM PM	
		AM PM	
		AM PM	
		AM PM	
		AM PM	
		AM PM	
		AM PM	
		AM PM	
		AM PM	
		AM PM	
		AM PM	
		AM PM	
		AM PM	
		AM PM	
		AM PM	
		AM PM	
		AM PM	
		AM PM	
		AM PM	
		AM PM	

COMMENTS - EVENTS - CONDITIONS - CHANGES - OTHER INFORMATION

Depressure the Injection well, Brake BIT Sub and 22" bit with tongs & touch. Make up 14 3/4 bit work on can rig take x0 sub and 5 looker or stabilizer
--

Installer's Signature
LCC 05/1 08/2009

Date

Client's Signature

PAYROLL

Date

Supervisor's Signature



LAYNE CHRISTENSEN COMPANY - DRILLING SHIFT REPORT

CLIENT NEW - Proposed Turkey Point Units 6 and 7
Docket Nos. 52-040 and 52-041
L-2012-273 Enclosure 2 Page 19 of 52
JOBSITE NAME FPL

DATE 6-17-2012
SUN DAYS

JOB # 11771-1405-10000

JOBSITE LOCATION T.P.

PERSONNEL EMPLOYED TODAY

Crew Assignment	Employee - Full Name	Per Diem? (X)	Onsite Hours	Offsite Hours	Total Hours
Driller	Bosit Gulomov	45	12		12
A.P	ANDREY POPOV	45	12		12
V.M	VICTOR MOISYEV	45	12		12

EQUIPMENT DEPLOYED TODAY

Description	Unit #	Status
FDW 200	28605	W/K
1989 MACIK	18000	S/B
Dump TRUCK		
CEMENT	28145	
UNIT		S/B
Working	WK	Mobilization MB
Standby	SB	Demobilization DM
Down in Shop	DS	Available in Yard AY
Down on Site	DN	Available on Job AV

DAILY ACCOUNTING OF ACTIVITIES BY ITEM

Item #	Cost Code	Labor Activity	Hours
1	10000	Short Duration Job	
2	11100	Onsite Mob/Demob	
3	11150	Job Preparation	
4	11200	Safety Meeting	
5	0005	Training - Overhead	
6	0006	Shop - Overhead	
7	0007	Maintenance - Overhead	
8	11250	Training - Job Chargeable	
9	11300	Site Clean up	
10	11350	Install Sound Walls	
11	11400	Install Decon Pad	
12	11450	Install Surface Casing	
13	11500	Install Roadway & Drill Pad	
14	12050	Test Hole Drilling	
15	12100	Geophysical Logging & Other Testing	
16	12150	Aquifer Zone Testing	
17	12200	Borehole Abandonment	
18	13050	Production Well Installation	
19	13100	Install Conductor Pipe	
20	13150	Drill Pilot Hole	
21	13200	Geophysical Logging & Other Testing	
22	13250	Aquifer Zone Testing	
23	13300	Borehole Abandonment/Cement Plugs	
24	13350	Reaming	
25	13400	Under Reaming	
26	13450	Install Casing	
27	13500	Install Screen	
28	13550	Gravel Pack The Well	
29	13600	Install Annular Seal	
30	13650	Water Watching	
31	14050	Well Development Air Lift and Swab	
32	14100	Disposal of Fluids & Cuttings	
33	14150	Furnish & Install Test Pump and Discharge	
34	14200	Development Pumping	
35	14250	Test Pumping	
36	14300	Disinfection and Chlorination	
37	19050	Offsite Activities Mob/Demob	
38	19100	Shop	
39	19150	Administration	
40	19550	Other Activities Standby	
41	19600	Fishing for Lost/Broken Tooling	
42	19650	Change Order Activities	
43	88000	Equipment Repairs	
44	90170	Damages	
45	90200	Job Superintendent	
		Lunch	
		TOTAL HOURS	

MATERIALS USED TODAY

Quantity	Description
	SAFETY MTG:
	T.I.H - D.P. HAND SAFETY:
	PINCH POINT: H.I.R.A.

TIME OF ACTIVITY BY ITEM

From	To	Circle One	Item #
		AM PM	
		AM PM	
		AM PM	
		AM PM	
		AM PM	
		AM PM	
		AM PM	
		AM PM	
		AM PM	
		AM PM	
		AM PM	
		AM PM	
		AM PM	
		AM PM	
		AM PM	
		AM PM	
		AM PM	
		AM PM	
		AM PM	
		AM PM	

COMMENTS - EVENTS - CONDITIONS - CHANGES - OTHER INFORMATION

T.I.H 14 3/4 BIT: TAG@ 1445' BPL: DRILL 14 3/4 BIT
FROM 1- 1445' BPL - TO - 1471 BPL HOUSEKEEPING
SITE CLEAN UP: PRESS WASH CANRIG AND FLOOR:

Signature
CC 0594 02209

6-17-12
Date

Client's Signature

PAYROLL

Date

Signature
Supervisor's Signature



LAYNE CHRISTENSEN COMPANY - DRILLING SHIFT REPORT

CLIENT **FPL**DATE **6-18-12**
Mon. DaysJOB # **11771.1405.10000**JOBSITE NAME **MW-1**Proposed Turkey Point Units 6 and 7
Docket Nos. 52-040 and 52-041
L-2012-273 Enclosure 2 Page 21 of 52JOBSITE LOCATION **Turkey Point**

PERSONNEL EMPLOYED TODAY

EQUIPMENT DEPLOYED TODAY

DAILY ACCOUNTING OF ACTIVITIES BY ITEM #

Crew	Employee - Full Name	Per Diem? (X)	Onsite Hours	Offsite Hours	Total Hours
DRILL MUR	Michael A. Ramirez	45	12		12
VI	Vlad Ishimov	-	4		4
JM	James McDonnell	45	12		12
BF	Bob Fectham	45	12		12

Description	Unit #	Status
FOW-200	28665	W/K
'89 Mack Dump	18000	S/B
Cement unit	28145	S/B
Working	WK	Mobilization
Standby	SB	Demobilization
Down in Shop	DS	Available in Yard
Down on Site	DN	Available on Job

Item #	Cost Code	Labor Activity	Hours
1	10000	Short Duration Job	
2	11100	Onsite Mob/Demob	
3	11150	Job Preparation	
4	11200	Safety Meeting	
5	0005	Training - Overhead	
6	0006	Shop - Overhead	
7	0007	Maintenance - Overhead	
8	11250	Training - Job Chargeable	
9	11300	Site Clean up	
10	11350	Install Sound Walls	
11	11400	Install Decon Pad	
12	11450	Install Surface Casing	
13	11500	Install Roadway & Drill Pad	
14	12050	Test Hole Drilling	
15	12100	Geophysical Logging & Other Testing	
16	12150	Aquifer Zone Testing	
17	12200	Borehole Abandonment	
18	13050	Production Well Installation	
19	13100	Install Conductor Pipe	
20	13150	Drill Pilot Hole	
21	13200	Geophysical Logging & Other Testing	
22	13250	Aquifer Zone Testing	
23	13300	Borehole Abandonment/Cement Plugs	
24	13350	Reaming	
25	13400	Under Reaming	
26	13450	Install Casing	
27	13500	Install Screen	
28	13550	Gravel Pack The Well	
29	13600	Install Annular Seal	
30	13650	Water Watching	
31	14050	Well Development Air Lift and Swab	
32	14100	Disposal of Fluids & Cuttings	
33	14150	Furnish & Install Test Pump and Discharge	
34	14200	Development Pumping	
35	14250	Test Pumping	
36	14300	Disinfection and Chlorination	
37	19050	Offsite Activities Mob/Demob	
38	19100	Shop	
39	19150	Administration	
40	19550	Other Activities Standby	
41	19600	Fishing for Lost/Broken Tooling	
42	19650	Change Order Activities	
43	88000	Equipment Repairs	
44	90170	Damages	
45	90200	Job Superintendent	
		Lunch	
		TOTAL HOURS	

MATERIALS USED TODAY

TIME OF ACTIVITY BY ITEM #

Quantity	Description
	Safety Meetings
	① Heat Stress
	② off drill side wrench / lockout tagout
	PPE, loader safety, hand signals, grinder safety, power tool safety, Fall protection, 100% tie off

From	To	Circle One	Item #
		AM PM	
		AM PM	
		AM PM	
		AM PM	
		AM PM	
		AM PM	
		AM PM	
		AM PM	
		AM PM	
		AM PM	
		AM PM	
		AM PM	
		AM PM	
		AM PM	
		AM PM	
		AM PM	
		AM PM	
		AM PM	
		AM PM	
		AM PM	

COMMENTS - EVENTS - CONDITIONS - CHANGES - OTHER INFORMATION

Cont to Drill 14 3/4" Bit from 1592' bpl to 1614' bpl. Run Survey at 1580' got 4°. Make Connection. Cont to drill 14 3/4" Bit from 1614' bpl to 1691' bpl. Cleaning / housekeeping / painting. scrub front pad wall. clean / paint hand rails by drillhouse, organize / square up bar/gel bags. Load up Packer Spool & our Air compressor on truck, sent out. Scraped Cement off windows (on house)

M. P. [Signature]**6/18/12****[Signature]**Installer's Signature
LCC 05K1 082209

Date

Client's Signature

PAYROLL

Date

Supervisor's Signature

Date



Proposed Turkey Point Units 6 and 7
Docket Nos. 52-040 and 52-041
L-2012-273 Enclosure 2 Page 22 of 52

DATE _____

6/18/12
monday Night shift

106

JOB # 11771.1405.10000
JOBSITE LOCATION Turkey Point

PERSONNEL EMPLOYED TODAY

EQUIPMENT DEPLOYED TODAY

DAILY ACCOUNTING OF ACTIVITIES BY ITEM AND

Description	Unit #	Status
FDW 200	28605	Wk
1989 mac	18000	S/B
Dumpttruck		
Cement Unit	28145	S/B
Working	WK	Mob:ization
Standby	SB	Demobilization
Down in Shop	DS	Available in Yard
Down on Site	DN	Available on Job
		AV

Item #	Cost Code	Labor Activity	Hours
1	10000	Short Duration Job	
2	11100	Onsite Mob/Demob	
3	11150	Job Preparation	
4	11200	Safety Meeting	
5	0005	Training - Overhead	
6	0006	Shop - Overhead	
7	0007	Maintenance - Overhead	
8	11250	Training - Job Chargeable	
9	11300	Site Clean up	
10	11350	Install Sound Walls	
11	11400	Install Decon Pad	
12	11450	Install Surface Casing	
13	11500	Install Roadway & Drill Pad	
14	12050	Test Hole Drilling	
15	12100	Geophysical Logging & Other Testing	
16	12150	Aquifer Zone Testing	
17	12200	Borehole Abandonment	
18	13050	Production Well Installation	
19	13100	Install Conductor Pipe	
20	13150	Drill Pilot Hole	
21	13200	Geophysical Logging & Other Testing	
22	13250	Aquifer Zone Testing	
23	13300	Borehole Abandonment/Cement Plugs	
24	13350	Reaming	
25	13400	Under Reaming	
26	13450	Install Casing	
27	13500	Install Screen	
28	13550	Gravel Pack The Well	
29	13600	Install Annular Seal	
30	13650	Water Watching	
31	14050	Well Development Air Lift and Swab	
32	14100	Disposal of Fluids & Cuttings	
33	14150	Furnish & Install Test Pump and Discharge	
34	14200	Development Pumping	
35	14250	Test Pumping	
36	14300	Disinfection and Chlorination	
37	19050	Offsite Activities Mob/Demob	
38	19100	Shop	
39	19150	Administration	
40	19550	Other Activities Standby	
41	19600	Fishing for Lost/Broken Tooling	
42	19650	Change Order Activities	
43	88000	Equipment Repairs	
44	90170	Damages	
45	90200	Job Superintendent	
		Lunch	
		TOTAL HOURS	

MATERIALS USED TODAY

Quantity	Description
	Safety Meeting
	Hazardous Spills
	HIRA
	Safety topic
	PPE, Hand Safety, Eye protection
	team work, Slips, trips, & falls

TIME OF ACTIVITY BY ITEM

[illegible]

COMMENTS - EVENTS - CONDITIONS - CHANGES - OTHER INFORMATION

Continue to drill w/ $1\frac{3}{4}$ " bit from 1691 bpl to 1704 bpl
run deviation Survey 1640 bpl. 2° run deviation Survey
for 1700 bpl. 3° make Connection Continue to drill from
1704 bpl to 1794 bpl well flowing use 2" o.f.kill. Kill drill
pipe run deviation Survey @ 1760 bpl. 2° put centralizers on FRP.



Co/18/12
Date:

Client's Signature

PAYROLL

Date _____

Supervisor's Signature _____

Date _____

Data



LAYNE CHRISTENSEN COMPANY - DRILLING

CLIENT MW - 1 Proposed Turkey Point Units 6 and 7
Docket Nos. 52-040 and 52-041
JOB SITE NAME RPL L-2012-273 Enclosure 2 Page 24 of 52

DATE 6-19-12
TUE NIGHT

JOB # 11771-1405-10000

JOB SITE LOCATION T.P.

PERSONNEL EMPLOYED TODAY

EQUIPMENT DEPLOYED TODAY

DAILY ACCOUNTING OF ACTIVITIES BY ITEM

Crew Assignment	Employee - Full Name	Per Diem? (X)	Onsite Hours	Offsite Hours	Total Hours
DRILLER	BOSIT GULOMOV	45	12		12
P.V.	PAUL VAUGHN	45	12		12
N.T.	NIETO JUAN	45	12		12

Description		Unit #	Status
FDW-200		28605	W/K
1989 MACK		18000	S/B
DUMP TRUCK			
CEMENT		28145	
UNIT			S/B
Working	WK	Mobilization	MB
Standby	SB	Demobilization	DM
Down in Shop	DS	Available in Yard	AY
Down on Site	DN	Available on Job	AV

MATERIALS USED TODAY

TIME OF ACTIVITY BY ITEM

Quantity	Description
	SAFETY MTG!
	T.O.H 14 3/4 BIT! HAND SAFETY!
	PINCH POINT! HIRA! PPE!

From	To	Circle One	Item #
		AM PM	
		AM PM	
		AM PM	
		AM PM	
		AM PM	
		AM PM	
		AM PM	
		AM PM	
		AM PM	
		AM PM	
		AM PM	
		AM PM	
		AM PM	
		AM PM	
		AM PM	
		AM PM	
		AM PM	
		AM PM	
		AM PM	
		AM PM	

Item #	Cost Code	Labor Activity	Hours
1	10000	Short Duration Job	
2	11100	Onsite Mob/Demob	
3	11150	Job Preparation	
4	11200	Safety Meeting	
5	0005	Training - Overhead	
6	0006	Shop - Overhead	
7	0007	Maintenance - Overhead	
8	11250	Training - Job Chargeable	
9	11300	Site Clean up	
10	11350	Install Sound Walls	
11	11400	Install Decon Pad	
12	11450	Install Surface Casing	
13	11500	Install Roadway & Drill Pad	
14	12050	Test Hole Drilling	
15	12100	Geophysical Logging & Other Testing	
16	12150	Aquifer Zone Testing	
17	12200	Borehole Abandonment	
18	13050	Production Well Installation	
19	13100	Install Conductor Pipe	
20	13150	Drill Pilot Hole	
21	13200	Geophysical Logging & Other Testing	
22	13250	Aquifer Zone Testing	
23	13300	Borehole Abandonment/Cement Plugs	
24	13350	Reaming	
25	13400	Under Reaming	
26	13450	Install Casing	
27	13500	Install Screen	
28	13550	Gravel Pack The Well	
29	13600	Install Annular Seal	
30	13650	Water Watching	
31	14050	Well Development Air Lift and Swab	
32	14100	Disposal of Fluids & Cuttings	
33	14150	Furnish & Install Test Pump and Discharge	
34	14200	Development Pumping	
35	14250	Test Pumping	
36	14300	Disinfection and Chlorination	
37	19050	Offsite Activities Mob/Demob	
38	19100	Shop	
39	19150	Administration	
40	19550	Other Activities Standby	
41	19600	Fishing for Lost/Broken Tooling	
42	19650	Change Order Activities	
43	88000	Equipment Repairs	
44	90170	Damages	
45	90200	Job Superintendent	
		Lunch	
		TOTAL HOURS	

COMMENTS - EVENTS - CONDITIONS - CHANGES - OTHER INFORMATION

T.O.H 14 3/4 BIT! - IN CASIN @ 1440 BPL T.I.H
14 3/4 BIT @ 1850' BPL: T.O.H 14 3/4 BIT! Kill D.P. 4"
Kill + Kill BACK 2' Kill: T.I.H 12 1/4 BIT - TAG @ 1850 BPL
START DRILL 12 1/4 BIT FROM 1 - 1850' BPL - TO - 1852' BPL

Client's Signature

PAYROLL

Date

Supervisor's Signature

Date

LAYNE CHRISTENSEN COMPANY - DRILLING SHIFT REPORT

CLIENT

MW-1

DATE

6-20-12
WED NIGHT

小田

11771-1405-10000

HOSTITE NAME

Ed

Proposed Turkey Point Units 6 and 7
Docket Nos. 52-040 and 52-041
L-2012-273 Enclosure 2 Page 26 of 52

PERSONNEL EMPLOYED TODAY

EQUIPMENT DEPLOYED TODAY

DAILY ACCOUNTING OF ACTIVITIES BY ITEM N

Crew Assignment	Employee - Full Name	Per Diem? (X)	Onsite Hours	Offsite Hours	Total Hours
	MILLER BOSIL GUANAY	45			
	A.P. ANDREY POPOV	45			
	V.M. VICTOR MOISEYEV	45			
	J.M. JAMES McDONNELL	45			
	K.F. KHUSAN ISMATULLAEV	45			

MATERIALS USED TODAY

Quantity	Description
	SAFETY MEAS:
	(1) ELECTRICAL SAFETY
	(2) PINCH POINTS
	LOADER SAFETY, HTRA, PPE

COMMENTS - EVENTS - CONDITIONS - CHANGES - OTHER INFORMATION

Description		Unit #	Status
FDW-200		28600	W
1889 MACK		18000	
Dump Truck			S/B
CEMENT		23145	
WWT			S/B
Working	WK	Mobilization	MB
Standby	SB	Demobilization	DM
Down in Shop	DS	Available in Yard	AY
Down on Site	DN	Available on Job	AV

TIME OF ACTIVITY BY ITEM

[illegible]

Item #	Cost Code	Labor Activity	Hours
1	10000	Short Duration Job	
2	11100	Onsite Mob/Demob	
3	11150	Job Preparation	
4	11200	Safety Meeting	
5	0005	Training - Overhead	
6	0006	Shop - Overhead	
7	0007	Maintenance - Overhead	
8	11250	Training - Job Chargeable	
9	11300	Site Clean up	
10	11350	Install Sound Walls	
11	11400	Install Decon Pad	
12	11450	Install Surface Casing	
13	11500	Install Roadway & Drill Pad	
14	12050	Test Hole Drilling	
15	12100	Geophysical Logging & Other Testing	
16	12150	Aquifer Zone Testing	
17	12200	Well Abandonment	
18	13050	Production Well Installation	
19	13100	Install Conductor Pipe	
20	13150	Drill Pilot Hole	
21	13200	Geophysical Logging & Other Testing	
22	13250	Aquifer Zone Testing	
23	13300	Well Abandonment/Cement Plugs	
24	13350	Reaming	
25	13400	Under Reaming	
26	13450	Install Casing	
27	13500	Install Screen	
28	13550	Gravel Pack The Well	
29	13600	Install Annular Seal	
30	13650	Water Watching	
31	14050	Well Development Air Lift and Swab	
32	14100	Disposal of Fluids & Cuttings	
33	14150	Furnish & Install Test Pump and Discharge	
34	14200	Development Pumping	
35	14250	Test Pumping	
36	14300	Disinfection and Chlorination	
37	19050	Offsite Activities Mob/Demob	
38	19100	Shop	
39	19150	Administration	
40	19550	Other Activities Standby	
41	19600	Fishing for Lost/Broken Tooling	
42	19650	Change Order Activities	
43	88000	Equipment Repairs	
44	90170	Damages	
45	90200	Job Superintendent	
		Lunch	
		TOTAL HOURS	

T.O.H + 2 COLLARS ; LOGGING ; T.I.H. ;
LAY DOWN ALL OF THE SINGLE DRILL PIPES AND
BREAK DOWN THE COLLARS.

[Signature]
Billie's Brother

6-20-12

Client's Signature

PAYROLL

2010

Supervisor's Signature _____

444

K. Gould

6-20-78

Project: Florida Power & Light Company
Miami-Dade County, Florida
Exploratory Well EW-1



**EW-1 Pad Monitoring Well Water Quality Data
Northeast Pad Monitoring Well
(NE-EW PMW)**

Date	Time (hours)	Depth to Water (ft. btoc)	Water Elevation (ft. NAVD 88)	Specific Conductance (umhos/cm)	Chloride (mg/L)	TDS (mg/L)	Temperature (degrees C)	Remarks
4/21/2011	1108	10.49	-1.61	78,700	32,200	57,000	29.8	Background Sampling
4/29/2011	1157	10.68	-1.80	80,400	29,900	53,800	30.4	
5/5/2011	1157	11.40	-2.52	81,400	27,500	52,350	31.2	
5/11/2011	1309	11.00	-2.12	76,800	31,600	51,200	29.7	
5/19/2011	0958	10.48	-1.60	72,600	35,600	51,200	29.5	
5/26/2011	1050	10.76	-1.88	71,360	29,500	52,900	29.7	
6/2/2011	1134	10.78	-1.90	71,700	29,000	55,700	29.6	
6/9/2011	1128	10.61	-1.73	69,700	32,300	50,650	29.3	
6/16/2011	0958	10.35	-1.47	69,300	33,000	53,450	29.5	
6/23/2011	1028	10.41	-1.53	69,400	30,600	55,600	29.5	
6/30/2011	0928	10.15	-1.27	70,300	27,600	51,950	29.2	
7/8/2011	1210	9.00	-0.12	72,570	30,100	54,150	29.9	
7/14/2011	1338	9.75	-0.87	76,400	27,200	54,550	29.9	
7/21/2011	1039	9.35	-0.47	72,200	32,600	49,760	29.7	
7/28/2011	1119	9.51	-0.63	71,600	30,200	54,250	29.7	
8/4/2011	1249	9.70	-0.82	64,400	31,500	53,850	27.5	
8/11/2011	1059	9.25	-0.37	73,900	29,500	57,150	29.6	
8/18/2011	1039	9.45	-0.57	71,900	29,400	54,850	30.0	
8/25/2011	1039	9.45	-0.57	69,800	31,300	55,550	29.7	
9/1/2011	1109	9.15	-0.27	71,700	29,500	56,300	29.9	
9/8/2011	1049	9.15	-0.27	70,700	31,400	49,800	30.3	
9/16/2011	1233	9.30	-0.42	5320*	1260*	2668*	27.8	
9/23/2011	1129	9.10	-0.22	72,900	31,200	52,750	30.1	
9/29/2011	1330	9.16	-0.28	11,500*	3,200*	7,010*	27.8	
10/6/2011	1119	9.30	-0.42	72,600	30,000	56,200	30.1	
10/13/2011	1058	10.15	-1.27	75,200	32,500	51,600	30.1	
10/20/2011	1049	8.40	0.48	68,400	29,100	57,450	29.9	
10/27/2011	1109	8.95	-0.07	80,200	27,700	54,950	30.0	
11/3/2011	1049	8.91	-0.03	80,200	31,100	55,700	29.9	
11/10/2011	0958	9.67	-0.79	75,500	28,700	59,600	30.0	
11/17/2011	1058	10.81	-1.93	68,400	34,900	57,500	30.1	
11/25/2011	0939	9.51	-0.63	69,300	26,500	52,750	30.0	
12/1/2011	1138	9.67	-0.79	66,000	29,800	55,200	29.8	
12/8/2011	1058	10.31	-1.43	63,800	30,100	57,050	27.5	
12/15/2011	1109	9.61	-0.73	75,400	28,300	53,700	30.0	
12/22/2011	1038	9.67	-0.79	69,300	29,500	51,800	30.7	
12/29/2011	0918	9.87	-0.99	76,900	30,800	51,300	29.7	
1/5/2012	1118	10.41	-1.53	70,400	28,100	52,200	29.5	
1/12/2012	1058	10.21	-1.33	75,200	28,200	50,900	29.9	
1/19/2012	0958	10.30	-1.42	75,200	27,700	49,300	29.8	
1/26/2012	1048	10.22	-1.34	72,300	29,400	55,300	30.0	
2/2/2012	1048	10.21	-1.33	71,300	28,400	50,700	29.9	
2/10/2012	1029	9.15	-0.27	71,400	30,400	52,400	30.0	
2/16/2012	1219	9.47	-0.59	72,300	27,000	53,300	29.9	
2/23/2012	1049	9.57	-0.69	72,300	29,600	55,100	30.1	
3/1/2012	1038	9.74	-0.86	72,300	31,500	50,100	30.0	
3/8/2012	1058	9.76	-0.88	72,200	31,600	53,100	29.3	
3/16/2012	1038	9.65	-0.77	72,100	34,900	53,100	29.9	
3/22/2012	1108	9.90	-1.02	72,400	30,800	48,700	29.8	
3/29/2012	0911	9.87	-0.99	72,500	29,100	48,600	29.2	
4/5/2012	1208	10.25	-1.37	71,600	29,200	50,800	30.0	
4/12/2012	1118	10.15	-1.27	71,500	32,000	52,700	30.1	
4/19/2012	1143	9.85	-0.97	72,000	34,000	54,500	30.3	
4/26/2012	1009	9.50	-0.62	72,100	36,000	54,200	29.7	
5/3/2012	1144	8.85	0.03	72,400	36,500	50,900	29.6	
5/10/2012	1109	9.42	-0.54	72,800	32,000	51,700	29.7	
5/17/2012	0959	9.05	-0.17	73,200	29,500	53,200	29.7	
5/24/2012	1229	8.65	0.23	72,200	28,900	51,900	29.6	
5/31/2012	1214	9.04	-0.16	72,800	30,900	51,200	29.9	
6/8/2012	1029	9.32	-0.44	72,800	30,700	50,900	29.9	
6/14/2012	1029	9.55	-0.67	72,000	30,700	53,500	30.2	

ft. btoc: feet below top of casing
TOC: Top of Casing
ft. NAVD 88: North American Vertical Datum of 1988
umhos/cm: micromhos per centimeter
mg/L: milligrams per liter
C: Celsius

*Results appear to be anomalous and are suspected to be related to a sampling error. Countermeasures to prevent reoccurrence have been implemented.

Note: TOC elevation is: 8.88 feet NAVD 88

Project: Florida Power & Light Company
Miami-Dade County, Florida
Exploratory Well EW-1



**EW-1 Pad Monitoring Well Water Quality Data
Southeast Pad Monitoring Well
(SE-EW PMW)**

Date	Time (hours)	Depth to Water (ft. btoc)	Water Elevation (ft. NAVD 88)	Specific Conductance (umhos/cm)	Chloride (mg/L)	TDS (mg/L)	Temperature (degrees C)	Remarks
4/21/2011	1311	10.10	-1.51	81,600	30,200	57,800	29.9	Background Sampling
4/29/2011	1349	10.40	-1.81	86,700	33,100	55,000	30.4	
5/5/2011	1008	11.10	-2.51	83,000	29,500	54,700	29.9	
5/11/2011	1228	10.65	-2.06	78,200	30,100	52,600	30.1	
5/19/2011	1039	10.12	-1.53	75,200	30,000	51,100	29.8	
5/26/2011	1235	10.47	-1.88	73,890	31,200	53,800	29.9	
6/2/2011	1056	10.50	-1.91	74,200	29,400	57,400	29.6	
6/9/2011	1210	10.32	-1.73	72,200	32,100	51,000	29.6	
6/16/2011	1035	10.00	-1.41	71,300	32,200	54,000	29.8	
6/23/2011	1109	10.10	-1.51	71,900	31,600	55,650	29.8	
6/30/2011	1009	9.85	-1.26	72,800	27,600	53,050	29.5	
7/8/2011	1138	9.12	-0.53	73,150	29,800	54,450	29.9	
7/14/2011	1414	9.48	-0.89	79,700	29,000	55,350	29.8	
7/21/2011	1119	9.36	-0.77	74,100	34,000	54,100	30.0	
7/28/2011	1229	9.55	-0.96	74,300	30,200	56,300	29.8	
8/4/2011	1224	9.50	-0.91	72,700	31,500	53,000	27.7	
8/11/2011	1209	9.37	-0.78	77,400	30,000	56,800	29.7	
8/18/2011	1149	9.45	-0.86	74,100	30,100	55,500	30.0	
8/25/2011	1149	9.38	-0.79	73,300	31,200	57,450	29.6	
9/1/2011	1224	9.10	-0.51	72,700	30,700	57,300	29.8	
9/8/2011	1159	9.21	-0.62	73,200	32,200	51,800	30.1	
9/16/2011	1303	9.40	-0.81	70,280	29,600	50,550	27.7	
9/23/2011	1239	9.20	-0.61	75,200	29,000	55,550	29.8	
9/29/2011	1300	9.10	-0.51	68,500	30,700	53,600	27.4	
10/6/2011	1229	9.25	-0.66	79,100	31,300	54,050	30.0	
10/13/2011	1209	9.95	-1.36	76,900	30,200	52,250	30.1	
10/20/2011	1200	8.60	-0.01	69,900	28,000	57,150	29.8	
10/27/2011	1218	8.81	-0.22	82,400	28,000	56,500	30.0	
11/3/2011	1159	9.56	-0.97	82,900	31,000	56,400	30.1	
11/10/2011	1109	9.96	-1.37	78,300	27,900	60,500	30.1	
11/17/2011	1208	10.90	-2.31	69,700	34,000	57,800	30.2	
11/25/2011	1049	9.36	-0.77	69,900	26,900	53,600	30.0	
12/1/2011	1248	10.85	-2.26	71,800	33,900	57,000	30.2	
12/8/2011	1209	9.87	-1.28	68,900	29,500	61,500	27.0	
12/15/2011	1219	9.53	-0.94	76,600	28,000	55,100	30.1	
12/22/2011	1149	9.65	-1.06	72,300	29,000	52,400	30.0	
12/29/2011	1029	9.96	-1.37	77,600	29,800	52,200	30.1	
1/5/2012	1229	10.31	-1.72	72,800	27,700	53,400	30.1	
1/12/2012	1204	10.10	-1.51	76,000	30,800	52,900	30.1	
1/19/2012	1139	10.38	-1.79	76,500	28,100	50,800	30.0	
1/26/2012	1229	10.18	-1.59	73,200	29,900	56,300	30.1	
2/2/2012	1229	10.23	-1.64	72,400	27,900	52,000	30.1	
2/10/2012	1209	9.21	-0.62	72,000	29,800	55,400	30.2	
2/16/2012	1359	9.45	-0.86	72,700	27,700	57,200	30.2	
2/23/2012	1229	9.48	-0.89	72,800	32,100	57,000	30.2	
3/1/2012	1219	9.61	-1.02	72,800	31,000	51,700	30.2	
3/8/2012	1244	9.81	-1.22	72,500	32,500	52,500	29.9	
3/16/2012	1219	9.61	-1.02	72,900	34,300	53,100	30.3	
3/22/2012	1249	9.87	-1.28	72,600	31,000	51,100	30.2	
3/29/2012	1054	9.97	-1.38	72,900	29,500	51,200	29.9	
4/5/2012	1341	10.05	-1.46	72,300	29,500	52,200	30.2	
4/12/2012	1259	9.98	-1.39	72,200	31,200	53,800	30.5	
4/19/2012	1244	9.90	-1.31	71,800	33,500	54,500	30.4	
4/26/2012	1144	9.61	-1.02	72,200	35,500	54,500	30.0	
5/3/2012	1249	8.97	-0.38	73,100	37,400	51,700	30.2	
5/10/2012	1242	9.32	-0.73	73,300	32,100	53,100	30.2	
5/17/2012	1134	9.10	-0.51	73,300	27,700	54,100	30.1	
5/24/2012	1404	8.75	-0.16	73,400	30,600	54,100	30.3	
5/31/2012	1343	9.10	-0.51	73,900	31,000	50,500	30.1	
6/8/2012	1202	9.30	-0.71	73,300	31,100	53,200	30.3	
6/14/2012	1209	9.38	-0.79	73,700	31,500	54,700	30.6	

ft. btoc: feet below top of casing
TOC: Top of Casing
ft. NAVD 88: North American Vertical Datum of 1988
umhos/cm: micromhos per centimeter
mg/L: milligrams per liter
C: Celsius
Note: TOC elevation is: 8.59 feet NAVD 88

Project: Florida Power & Light Company
Miami-Dade County, Florida
Exploratory Well EW-1



**EW-1 Pad Monitoring Well Water Quality Data
Northwest Pad Monitoring Well
(NW-EW PMW)**

Date	Time (hours)	Depth to Water (ft. btoc)	Water Elevation (ft. NAVD 88)	Specific Conductance (umhos/cm)	Chloride (mg/L)	TDS (mg/L)	Temperature (degrees C)	Remarks
4/21/2011	1221	10.50	-1.66	84,300	33,500	59,900	30.8	Background Sampling
4/29/2011	1120	10.65	-1.81	86,300	33,700	56,400	30.0	
5/5/2011	1051	11.40	-2.56	87,400	31,300	57,650	31.1	
5/11/2011	1034	12.40	-3.56	79,100	33,500	55,650	30.4	
5/19/2011	1113	13.90	-5.06	80,000	36,000	53,700	30.4	
5/26/2011	1125	10.73	-1.89	75,130	32,300	55,450	30.4	
6/2/2011	1215	10.75	-1.91	75,900	30,700	59,500	30.3	
6/9/2011	1248	10.60	-1.76	72,500	32,200	51,950	29.9	
6/16/2011	1118	10.25	-1.41	72,500	31,500	54,550	30.0	
6/23/2011	1143	10.37	-1.53	73,300	31,600	57,750	30.3	
6/30/2011	1049	10.10	-1.26	75,700	27,400	54,300	30.0	
7/8/2011	1112	9.38	-0.54	74,100	30,700	53,950	30.3	
7/14/2011	1524	9.75	-0.91	79,900	27,600	56,350	30.3	
7/21/2011	1226	9.60	-0.76	76,200	32,600	54,500	29.7	
7/28/2011	1154	9.80	-0.96	74,900	32,200	57,050	30.5	
8/4/2011	1317	9.85	-1.01	78,000	30,500	59,300	28.7	
8/11/2011	1134	9.61	-0.77	77,600	31,100	58,150	30.4	
8/18/2011	1114	9.68	-0.84	73,100	30,000	55,350	30.6	
8/25/2011	1114	9.61	-0.77	72,300	31,800	56,950	30.0	
9/1/2011	1149	9.33	-0.49	71,900	29,300	56,000	30.4	
9/8/2011	1124	9.45	-0.61	73,800	30,100	52,300	30.5	
9/16/2011	1203	9.60	-0.76	67,200	23,400	51,650	28.2	
9/23/2011	1204	9.43	-0.59	73,800	30,800	54,450	30.4	
9/29/2011	1205	9.35	-0.51	68,700	27,500	50,800	27.6	
10/6/2011	1154	9.50	-0.66	78,400	30,000	56,550	30.2	
10/13/2011	1133	10.21	-1.37	75,800	29,300	50,500	30.2	
10/20/2011	1124	8.81	0.03	70,200	27,500	56,850	30.1	
10/27/2011	1143	10.39	-1.55	81,500	28,800	54,600	30.2	
11/3/2011	1123	10.50	-1.66	80,500	30,400	55,900	30.1	
11/10/2011	1033	10.37	-1.53	77,800	27,800	58,700	30.1	
11/17/2011	1133	10.71	-1.87	67,900	30,500	57,000	30.3	
11/25/2011	1014	9.58	-0.74	71,700	27,400	53,300	30.2	
12/1/2011	1214	9.80	-0.96	68,500	33,500	53,650	30.1	
12/8/2011	1133	10.37	-1.53	68,700	27,600	57,850	27.7	
12/15/2011	1144	9.75	-0.91	75,500	28,200	52,000	30.0	
12/22/2011	1114	9.87	-1.03	70,600	27,700	52,100	29.9	
12/29/2011	0954	9.97	-1.13	77,700	29,500	51,600	29.9	
1/5/2012	1153	10.52	-1.68	71,800	28,000	52,800	29.6	
1/12/2012	1133	10.35	-1.51	75,400	30,400	51,900	30.0	
1/19/2012	1033	10.42	-1.58	75,600	29,800	50,200	29.9	
1/26/2012	1123	10.35	-1.51	73,200	29,500	56,000	29.9	
2/2/2012	1123	10.35	-1.51	71,100	27,400	51,200	29.9	
2/10/2012	1104	9.38	-0.54	70,300	28,800	54,900	29.8	
2/16/2012	1254	9.67	-0.83	71,100	27,800	55,200	29.8	
2/23/2012	1124	9.67	-0.83	72,100	30,700	56,200	29.8	
3/1/2012	1114	9.91	-1.07	71,500	31,000	51,200	29.7	
3/8/2012	1139	9.62	-0.78	71,600	30,500	52,800	29.4	
3/16/2012	1114	9.85	-1.01	71,500	34,100	52,400	29.7	
3/22/2012	1144	10.10	-1.26	71,400	30,200	48,700	29.6	
3/29/2012	0949	9.93	-1.09	71,500	28,400	51,200	29.6	
4/5/2012	1241	10.09	-1.25	71,300	28,900	51,100	29.7	
4/12/2012	1154	10.00	-1.16	71,300	29,300	52,600	29.9	
4/19/2012	1109	9.97	-1.13	71,400	31,500	53,300	30.2	
4/26/2012	1042	9.68	-0.84	71,700	31,300	53,000	29.6	
5/3/2012	1109	9.00	-0.16	72,200	34,200	49,500	29.5	
5/10/2012	1142	9.35	-0.51	72,500	31,400	52,000	29.5	
5/17/2012	1032	9.10	-0.26	72,700	30,200	52,300	29.6	
5/24/2012	1302	8.75	0.09	72,600	30,300	52,800	29.5	
5/31/2012	1247	9.07	-0.23	73,100	32,100	48,800	29.6	
6/8/2012	1102	9.35	-0.51	71,800	30,300	52,200	29.7	
6/14/2012	1104	9.37	-0.53	72,300	30,200	53,200	30.3	

ft. btoc: feet below top of casing

TOC: Top of Casing

ft. NAVD 88: North American Vertical Datum of 1988

umhos/cm: micromhos per centimeter

mg/L: milligrams per liter

C: Celsius

Note: TOC elevation is: 8.84 feet NAVD 88

Project: Florida Power & Light Company
Miami-Dade County, Florida
Exploratory Well EW-1



**EW-1 Pad Monitoring Well Water Quality Data
Southwest Pad Monitoring Well
(SW-EW PMW)**

Date	Time (hours)	Depth to Water (ft. btoc)	Water Elevation (ft. NAVD 88)	Specific Conductance (umhos/cm)	Chloride (mg/L)	TDS (mg/L)	Temperature (degrees C)	Remarks
4/21/2011	1414	10.50	-1.62	72,500	26,400	51,500	30.6	Background Sampling
4/29/2011	1025	10.60	-1.72	77,400	28,300	51,600	29.8	
5/5/2011	0930	11.85	-2.97	75,200	29,000	49,400	28.7	
5/11/2011	1124	16.40	-7.52	78,100	28,300	51,050	31.6	
5/19/2011	1202	15.95	-7.07	73,100	29,700	48,450	32.6	
5/26/2011	1155	11.20	-2.32	66,630	27,800	48,350	29.4	
6/2/2011	1035	11.25	-2.37	68,500	26,000	52,600	29.4	
6/9/2011	1319	11.05	-2.17	65,400	26,300	44,150	29.5	
6/16/2011	1154	10.75	-1.87	64,900	27,000	48,450	29.5	
6/23/2011	1214	10.85	-1.97	65,500	30,400	50,800	29.6	
6/30/2011	1119	10.60	-1.72	68,500	24,300	46,650	29.4	
7/8/2011	1045	9.85	-0.97	64,950	25,600	47,650	29.6	
7/14/2011	1445	10.22	-1.34	69,900	24,800	48,300	29.6	
7/21/2011	1154	10.10	-1.22	67,800	27,400	47,900	29.6	
7/28/2011	1259	10.26	-1.38	67,000	26,600	48,650	27.7	
8/4/2011	1157	10.30	-1.42	68,420	25,600	51,350	27.5	
8/11/2011	1243	9.21	-0.33	67,800	26,400	51,150	29.7	
8/18/2011	1219	10.15	-1.27	66,300	25,400	47,500	29.8	
8/25/2011	1219	10.31	-1.43	66,000	26,900	50,150	29.4	
9/1/2011	1254	9.87	-0.99	65,400	25,700	49,450	29.8	
9/8/2011	1229	9.97	-1.09	66,800	26,300	46,500	29.9	
9/16/2011	1329	10.10	-1.22	64,000	25,700	46,800	28.0	
9/23/2011	1309	9.95	-1.07	66,200	25,800	47,500	29.6	
9/29/2011	1230	9.80	-0.92	64,100	25,400	46,150	27.7	
10/6/2011	1259	9.97	-1.09	76,200	25,800	45,800	29.7	
10/13/2011	1239	10.67	-1.79	69,100	26,100	46,700	29.8	
10/20/2011	1229	9.31	-0.43	64,700	23,800	51,100	29.6	
10/27/2011	1249	10.87	-1.99	75,600	26,500	50,000	29.7	
11/3/2011	1229	10.93	-2.05	75,600	27,700	49,750	29.7	
11/10/2011	1139	10.91	-2.03	73,500	25,500	53,300	29.7	
11/17/2011	1238	11.41	-2.53	63,800	26,900	50,400	29.7	
11/25/2011	1119	10.05	-1.17	65,800	24,900	48,950	29.7	
12/1/2011	1323	11.42	-2.54	65,900	29,600	51,100	29.6	
12/8/2011	1239	10.98	-2.10	64,900	24,800	52,450	27.3	
12/15/2011	1247	10.27	-1.39	70,100	24,800	49,700	29.4	
12/22/2011	1219	10.27	-1.39	66,800	24,900	45,600	29.7	
12/29/2011	1059	10.67	-1.79	71,100	26,400	46,300	29.5	
1/5/2012	1259	11.03	-2.15	64,800	24,900	47,600	29.3	
1/12/2012	1234	10.87	-1.99	69,000	25,700	47,000	29.6	
1/19/2012	1104	11.00	-2.12	69,100	24,900	44,200	29.4	
1/26/2012	1154	10.85	-1.97	67,500	25,900	50,100	29.4	
2/2/2012	1154	10.97	-2.09	65,300	25,200	46,200	29.5	
2/10/2012	1134	9.91	-1.03	65,300	25,400	48,900	29.6	
2/16/2012	1324	10.15	-1.27	64,600	24,100	50,500	29.4	
2/23/2012	1154	10.24	-1.36	65,300	24,100	50,500	29.5	
3/1/2012	1144	10.27	-1.39	65,300	26,900	45,900	29.4	
3/8/2012	1209	10.31	-1.43	65,300	27,400	47,700	30.0	
3/16/2012	1144	10.35	-1.47	65,300	29,800	47,200	29.3	
3/22/2012	1214	10.61	-1.73	65,500	27,100	44,600	29.3	
3/29/2012	1019	10.18	-1.30	65,500	26,100	45,900	29.5	
4/5/2012	1309	10.72	-1.84	65,300	25,600	48,200	29.4	
4/12/2012	1224	10.60	-1.72	65,000	27,000	49,700	30.5	
4/19/2012	1211	10.65	-1.77	65,400	28,200	50,800	30.6	
4/26/2012	1109	10.32	-1.44	66,000	30,900	49,800	29.2	
5/3/2012	1214	9.70	-0.82	67,200	30,800	47,700	29.2	
5/10/2012	1209	10.02	-1.14	68,700	30,200	49,600	29.2	
5/17/2012	1100	9.85	-0.97	68,700	27,800	49,200	28.9	
5/24/2012	1330	9.47	-0.59	68,700	28,000	49,600	29.2	
5/31/2012	1314	9.91	-1.03	68,400	28,900	49,400	29.3	
6/8/2012	1129	10.10	-1.22	68,300	29,700	49,600	29.4	
6/14/2012	1134	10.15	-1.27	67,300	28,500	50,100	29.5	

ft. btoc: feet below top of casing
TOC: Top of Casing
ft. NAVD 88: North American Vertical Datum of 1988
umhos/cm: micromhos per centimeter
mg/L: milligrams per liter
C: Celsius
Note: TOC elevation is: 8.88 feet NAVD 88

[illegible]

[illegible]

Project:	Florida Power & Light Company Miami-Dade County, Florida Dual-Zone Monitor Well DZMW-1
-----------------	--




DZMW-1 Pad Monitoring Well Water Quality Data
Southwest Pad Monitoring Well
(SW-DZMW PMW)

Date	Time (hours)	Depth to Water (ft. btoc)	Water Elevation (ft. NAVD 88)	Specific Conductance (umhos/cm)	Chloride (mg/L)	TDS (mg/L)	Temperature (degrees C)	Remarks
3/20/2012	1137	8.34	-0.97	73,300	32,900	50,300	30.1	Background Sampling
3/29/2012	1229	8.38	-1.01	73,100	29,900	50,700	30.2	
4/6/2012	0954	8.50	-1.13	72,000	28,800	52,500	29.9	
4/13/2012	1227	8.52	-1.15	72,000	32,300	54,400	29.9	
4/20/2012	1139	8.45	-1.08	72,100	31,800	53,700	29.9	
4/27/2012	1101	8.25	-0.88	72,600	31,800	55,300	29.9	
5/4/2012	1108	7.60	-0.23	73,200	30,500	52,600	29.6	
5/11/2012	1331	7.95	-0.58	71,500	35,400	53,800	29.5	
5/18/2012	1208	7.82	-0.45	73,800	32,600	51,200	29.9	
5/25/2012	1343	7.68	-0.31	73,900	33,500	53,600	29.8	
6/1/2012	1151	7.71	-0.34	74,100	30,700	51,500	29.5	
6/8/2012	1336	7.97	-0.60	73,300	30,900	53,400	29.9	
6/15/2012	1131	7.95	-0.58	73,400	32,000	53,600	29.9	

ft. btoc:	feet below top of casing
TOC:	Top of Casing
ft. NAVD 88:	North American Vertical Datum of 1988
umhos/cm:	micromhos per centimeter
mg/L:	milligrams per liter
C:	Celsius
Top of Casing Elevation:	7.37 feet NAVD 88



Project: Florida Power & Light Company
Miami-Dade County, Florida
Dual-Zone Monitor Well DZMW-1

MHC



DZMW-1 Pad Monitoring Well Water Quality Data
Northwest Pad Monitoring Well
(NW-DZMW PMW)

Date	Time (hours)	Depth to Water (ft. btoc)	Water Elevation (ft. NAVD 88)	Specific Conductance (umhos/cm)	Chloride (mg/L)	TDS (mg/L)	Temperature (degrees C)	Remarks
3/20/2012	1103	8.27	-1.08	73,600	29,500	53,100	29.9	Background Sampling
3/29/2012	1158	8.31	-1.12	73,400	30,100	48,400	30.0	
4/6/2012	0926	8.35	-1.16	72,100	29,200	51,400	29.8	
4/13/2012	1157	8.41	-1.22	72,200	34,600	55,000	30.4	
4/20/2012	1108	8.35	-1.16	72,000	31,400	55,500	29.9	
4/27/2012	1027	8.05	-0.86	72,200	32,200	53,900	29.8	
5/4/2012	1037	7.12	0.07	72,800	30,800	52,400	29.6	
5/11/2012	1258	8.45	-1.26	72,300	33,700	53,000	29.8	
5/18/2012	1137	7.30	-0.11	73,600	35,100	51,800	29.8	
5/25/2012	1309	7.10	0.09	73,400	32,200	53,300	29.7	
6/1/2012	1219	7.25	-0.06	73,800	31,900	52,700	29.6	
6/8/2012	1304	7.50	-0.31	73,400	31,500	51,800	30.0	
6/15/2012	1159	7.51	-0.32	73,700	32,500	54,800	30.1	

<div> <div>Florida Power & Light Company</div> <div>Turkey Point</div> <div>Dual-Zone Monitor Well DZMW-1</div> <div>16-inch Diameter Casing Run Summary</div> </div> <div>   </div>					
Date Installed	Time Installed	Joint #	Mill #	Length of Joint	Cumulative Length
6/13/2012	14:45	1	890802	43.77	43.77
6/13/2012	15:30	2	890802	39.22	82.99
6/13/2012	16:05	3	890802	39.23	122.22
6/13/2012	16:40	4	890802	40.33	162.55
6/13/2012	17:05	5	890802	39.24	201.79
6/13/2012	17:40	6	890802	39.27	241.06
6/13/2012	18:15	7	890802	39.22	280.28
6/13/2012	18:45	8	890802	39.24	319.52
6/13/2012	19:20	9	890802	39.27	358.79
6/13/2012	19:55	10	890802	39.25	398.04
6/13/2012	20:50	11	890802	39.25	437.29
6/13/2012	21:35	12	890802	39.26	476.55
6/13/2012	22:10	13	890802	39.23	515.78
6/13/2012	22:45	14	890802	39.23	555.01
6/13/2012	23:15	15	890802	39.24	594.25
6/13/2012	23:50	16	890802	39.27	633.52
6/14/2012	0:20	17	890802	39.25	672.77
6/14/2012	0:50	18	890802	39.26	712.03
6/14/2012	1:20	19	890802	39.22	751.25
6/14/2012	1:50	20	890802	39.26	790.51
6/14/2012	2:30	21	890802	39.25	829.76
6/14/2012	3:05	22	890802	39.24	869.00
6/14/2012	3:40	23	890802	39.23	908.23
6/14/2012	4:10	24	890802	39.28	947.51
6/14/2012	4:35	25	890802	39.24	986.75
6/14/2012	5:25	26	890802	39.24	1025.99
6/14/2012	6:00	27	890802	39.23	1065.22
6/14/2012	7:15	28	890802	39.21	1104.43
6/14/2012	8:00	29	890802	39.22	1143.65
6/14/2012	8:35	30	890802	39.22	1182.87
6/14/2012	9:10	31	890802	39.25	1222.12
6/14/2012	9:50	32	890802	39.25	1261.37
6/14/2012	10:25	33	890802	39.23	1300.60
6/14/2012	10:55	34	890802	39.27	1339.87
6/14/2012	11:25	35	890802	39.25	1379.12
6/14/2012	12:00	36	890802	39.23	1418.35
6/14/2012	12:50	37 (header)	890802	38.53	1456.88
Length of header joint from the base of the lugs is 38.53 feet with 6.88 feet above pad level. This will put 1,450 feet of casing below pad level. Casing set to 1,450 feet bpl All lengths measured in feet.					

**Florida Power & Light Company
Turkey Point
Dual-Zone Monitor Well DZMW-1
16-inch Diameter Cement Summary**



Cementing Stage	Date	Depth of Hole (feet bpl)	Volume of Cement			Theoretical		Actual Interval Cemented (feet)	Actual / Theoretical Filled Interval (percent)	Type of cement (including additives)
			Planned (barrels)	Actual Pumped (barrels)	(cubic feet)	Depth (feet bpl)	Fill (feet)			
1	6/14/2012	1453	167	168	942.5	1050	403	400	99.26	Neat
2	6/15/2012	1053	145	145	813.5	528	525	557	106.10	12%
3	6/15/2012	496	137	130	729.3	25	471	496	105.31	12%
	Final tag:	0								
Total:			449.0	443.0	2,485.2					



"Tagged Bottom" refers to the top of cement that was tagged by the Contractor prior to the cementing stage.

"Theoretical Interval Cemented" is the theoretical linear feet of cement fill based on the volume of cement pumped for that stage (calculated using XY caliper log).

"Actual Interval Cemented" refers to the difference between "Tagged Bottom" depths.

"Actual/Theoretical Filled Interval" refers to the "Actual Interval Cemented" divided by the "Theoretical Interval Cemented" as a percentage.

"bpl" denotes below pad level.

 Florida Power & Light Company Turkey Point Dual Zone Monitor Well DZMW-1 Deviation Survey Summary 					
Pilot Hole			Reamed Holes		
Date	Depth (feet bpl)	Inclination (degrees)	Date	Depth (feet bpl)	Inclination (degrees)
3/28/2012	90	0.6	4/1/2012	90	0.2
3/29/2012	180	0.2	4/2/2012	180	0.5
4/6/2012	270	0.1	4/18/2012	270	0.1
4/6/2012	360	0.3	4/18/2012	360	0.2
4/7/2012	450	0.3	4/18/2012	450	0.5
4/7/2012	540	0.5	4/18/2012	540	0.3
4/11/2012	630	0.4	4/26/2012	630	0.2
4/11/2012	720	0.3	4/27/2012	720	0.3
4/12/2012	810	0.4	4/27/2012	810	0.1
4/12/2012	900	0.1	4/27/2012	900	0.3
4/12/2012	990	0.3	4/27/2012	990	0.3
4/13/2012	1,070	0.1	4/27/2012	1,060	0.3
5/11/2012	1,160	0.2	6/8/2012	1,160	0.1
5/11/2012	1,250	0.3	6/9/2012	1,220	0.1
5/11/2012	1,340	0.2	6/9/2012	1,280	0.2
5/11/2012	1,430	0.3	6/10/2012	1,340	0.2
5/12/2012	1,520	0.3	6/14/2012	1,400	0.4
5/13/2012	1,610	0.5	6/17/2012	1,460	0.3
5/15/2012	1,700	0.3	6/17/2012	1,520	0.1
5/14/2012	1,760	0.4	6/18/2012	1,580	0.4
5/15/2012	1,820	0.4	6/18/2012	1,640	0.2
5/15/2012	1,880	0.5	6/18/2012	1,700	0.3
			6/18/2012	1,760	0.2
			6/20/2012	1,820	0.4
			6/20/2012	1,880	0.4

bpl = below pad level

**Florida Power & Light Company
Turkey Point
Dual-Zone Monitor Well DZMW-1
Daily Kill Material Log**

[illegible]



(16" CASING)
CEMENT TOP
TEMPERATURE
LOG

Proposed Turkey Point Units 6 and 7
Docket Nos. 52-040 and 52-041
L-2012-273 Enclosure 2 Page 39 of 52

Country USA

Company FP&L

Well TURKEY POINT DZMW-1

Field FLORIDA CITY

County MIAMI-DADE

State FLORIDA

Country USA

Location:

API #:

Other Services

FPL TURKEY POINT POWER PLANT
MCNABB HYDROGEOLOGIC CONSULTING, INC.

NONE

LAT: 25 25' 19" N LONG: 80 20' 08" W
SEC TWP RGE

Elevation

Permanent Datum

PAD LEVEL

Elevation

Log Measured From

PAD LEVEL

K.B.
D.F.
G.L.

Drilling Measured From

PAD LEVEL

Date	15-JUN-2012		
Run Number	SEVEN		
Depth Driller	1453'		
Depth Logger	1453'		
Bottom Logged Interval	1453'		
Top Log Interval	SURFACE		
Open Hole Size	22"		
Type Fluid	WATER		
Density / Viscosity	NA		
Max. Recorded Temp.	190 F		
Estimated Cement Top	NA		
Time Well Ready	SEE COMMENTS		
Time Logger on Bottom	SEE COMMENTS		
Equipment Number	GEO1		
Location	FT. MYERS		
Recorded By	J. CATHEY		
Witnessed By	S. DURALL		

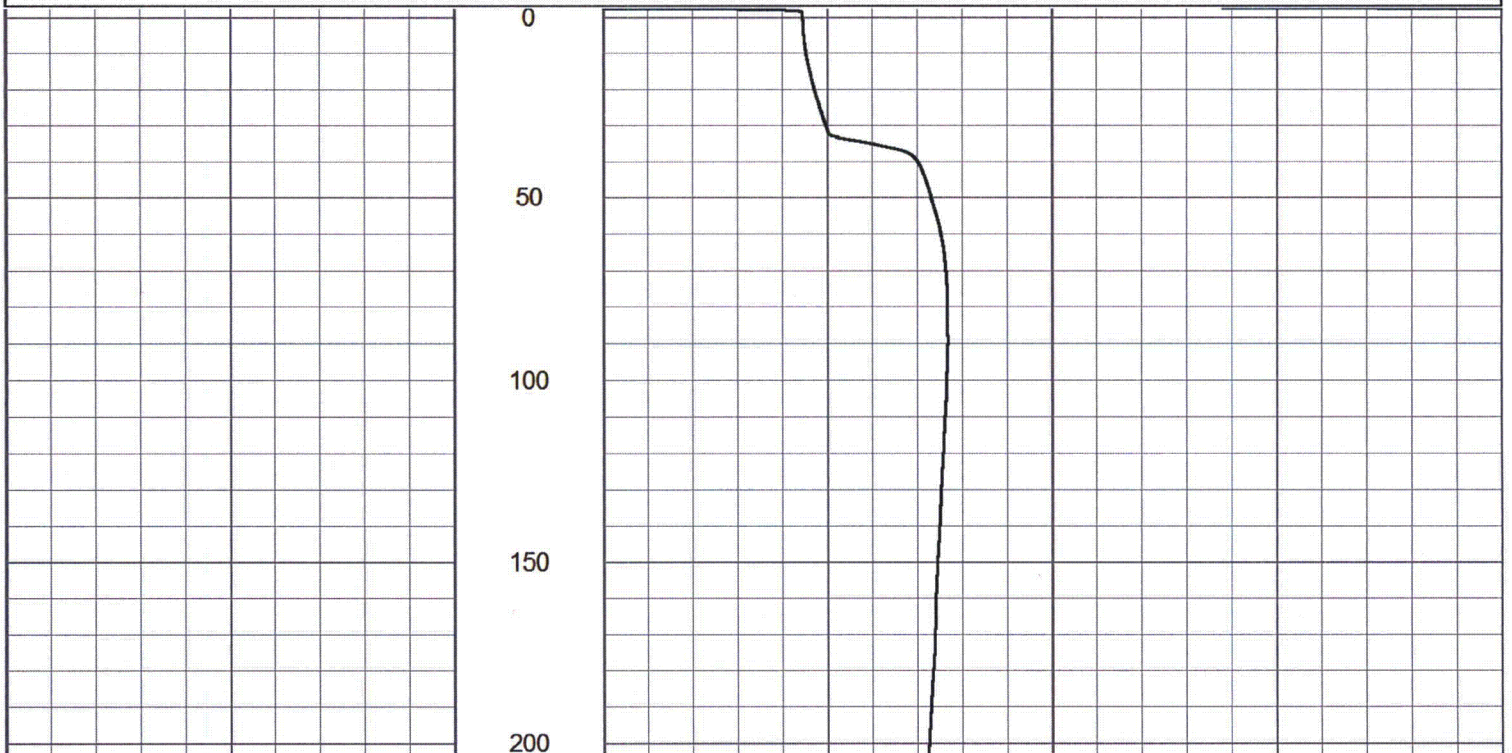
Borehole Record

Tubing Record

Run Number	Bit	From	To	Size	Weight	From	To
ONE	12.25"	CASING	250'	FIVE	12.25"	CASING	1900'
TWO	42"	CASING	258'	SIX	22"	CASING	1453'
THREE	12.25"	CASING	1110'				
FOUR	32.5"	CASING	1105'				

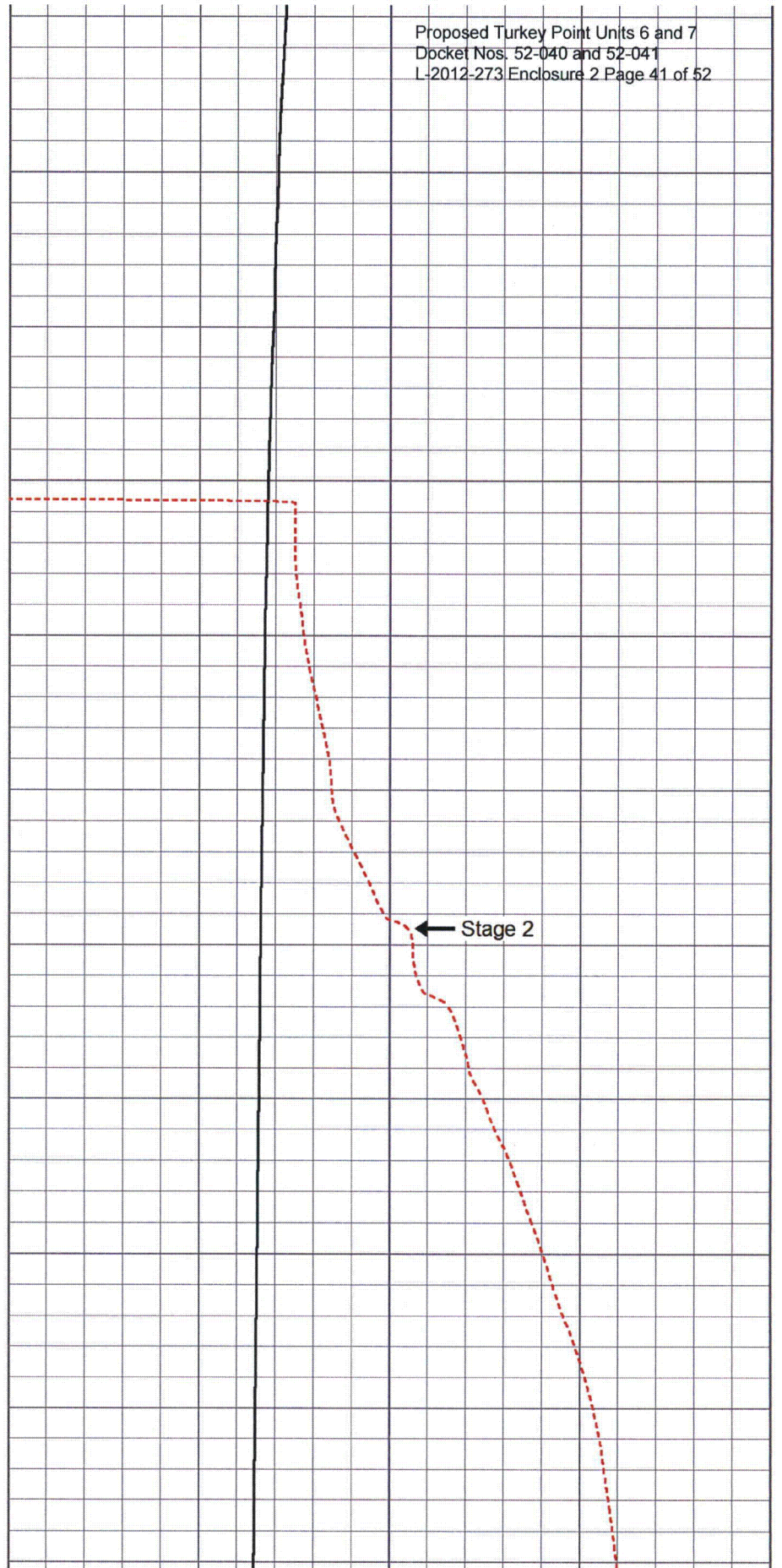
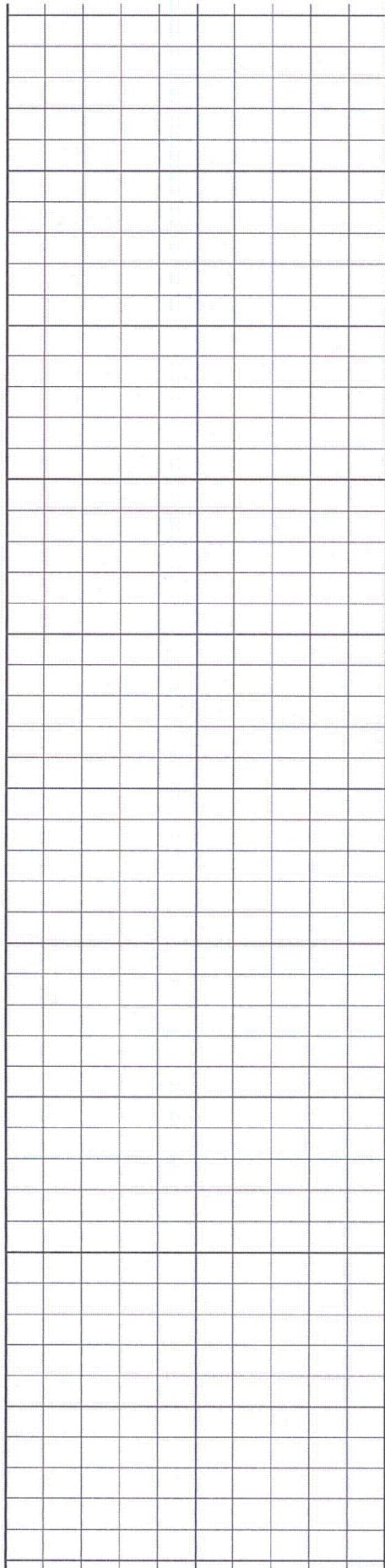
Casing Record	Size	Wgt/Ft	Top	Bottom
Surface String	44"	.375" W.T.	SURFACE	36'
Prot. String	34"	.375" W.T.	SURFACE	255'
Production String	24"	.375" W.T.	SURFACE	1100'
Liner	16"	.500" W.T.	SURFACE	1450'

vv Fold Here vv



200
250
300
350
400
450
500
550
600
650
700

← Stage 2



700

750

800

850

900

950

1000

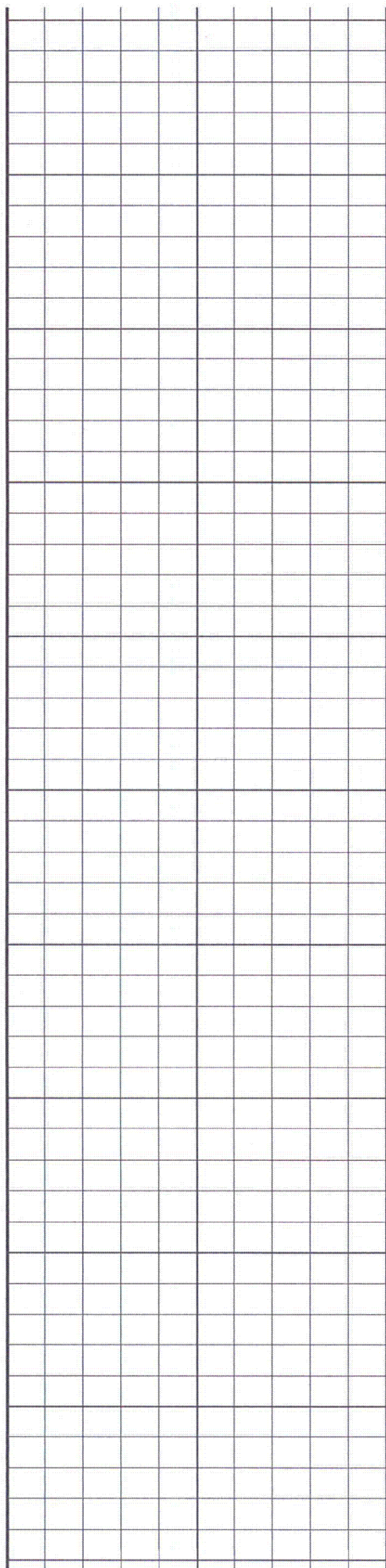
1050

1100

1150

1200

Stage 1



1200

1250

1300

1350

1400

50

Stage 1 (degF)

150

50

Stage 2 (degF)

150

Calibration Report


Database File: fpldzmw1.db
Dataset Pathname: turkeypoi/well/run7/TEMP2
Dataset Creation: Fri Jun 15 17:06:08 2012 by Log SOC 111108

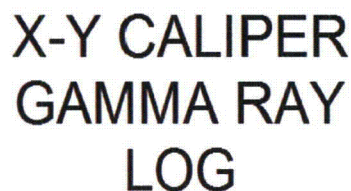
Temperature Calibration Report

Serial Number: 111143
Tool Model: 1.375TEMP
Performed: Wed Jan 25 10:30:05 2012

	Reference	Reading
Low Reference:	0.00 degF	0.00 cps
High Reference:	100.00 degF	1000.00cps

Gain: 0.10
Offset: 0.00
Delta Spacing 1

Sensor	Offset (ft)	Schematic	Description	Len (ft)	OD (in)	Wt (lb)
TEMP	0.13		<p>TEMP-1.375TEMP (111143) Temperature Tool</p>	1.33	1.38	5.00
		<p>Dataset: fpldzmw1.db: turkeypoi/well/run7/TEMP2 Total Length: 1.33 ft Total Weight: 5.00 lb O.D. 1.38 in</p>	<p>Proposed Turkey Point Units 6 and 7 Docket Nos. 52-040 and 52-041 L-2012-273 Enclosure 2 Page 44 of 52</p>			



Company FP&L
Well Turkey Point DZMW-1
Field Florida City
County Miami-Dade
State/Prov Florida

Proposed Turkey Point Units 6 and 7
Docket Nos. 52-040 and 52-041
L-2012-273 Enclosure 2 Page 45 of 52

County **Miami-Dade** State/Prv **Florida**

FPL Turkey Point Power Plant
LAT: 25 25' 19" N LONG: 80 20' 08" W
McNabb Hydrogeologic Consulting, Inc.

XY/GR

Elevation

Elevation

Pad Level

Pad Level

K.B.
D.F.
G.L.

Date	20-JUN-2012		
Run Number	EIGHT		
Depth Driller	1905'		
Depth Logger	1905'		
Bottom Logged Interval	1905'		
Top Log Interval	1045'		
Open Hole Size	12.25"/14.75"		
Type Fluid	H2O		
Density / Viscosity	NA/NA		
Max. Recorded Temp.	NA		
Estimated Cement Top	SURFACE		
Time Well Ready	20:00 6/20/2012		
Time Logger on Bottom	20:00 6/20/2012		
Equipment Number	MVGS-1		
Location	Ft. Myers		
Recorded By	S.Miller/C.Miller		
Witnessed By	S.Durall (MHC)	K.Greuel (LCC)	

Borehole Record				Tubing Record			
Run Number	Bit	From	To	Size	Weight	From	To
ONE	12.25"	SURFACE	250'	FIVE	12.25"	1102'	1905'
TWO	42"	SURFACE	258'	SIX	14.75"	1450'	1850'
THREE	12.25"	255'	1110'				
FOUR	32.5"	255'	1110'				

Casing Record	Size	Wgt/Ft	Top	Bottom
Surface String	44"	0.375" WT	SURFACE	36'
Prot. String	34"	0.375" WT	SURFACE	255'
Production String	24"	0.375" WT	SURFACE	1102'
Liner	16"	0.500" WT	SURFACE	1450'
Invoice No.	2012128	LTPDZM1A.db	8fld/las/pdf	* FINAL PRINT *

<< Fold Here >>

All interpretations are opinions based on inferences from electrical or other measurements and we cannot and do not guarantee the accuracy or correctness of any interpretation, and we shall not, except in the case of gross or willful negligence on our part, be liable or responsible for any loss, costs, damages, or expenses incurred or sustained by anyone resulting from any interpretation made by any of our officers, agents or employees. These interpretations are also subject to our general terms and conditions set out in our current Price Schedule.

Comments

Proposed Turkey Point Units 6 and 7
Docket Nos. 52-040 and 52-041
L-2012-273 Enclosure 2 Page 46 of 52

MAXIMUM Caliper Arm Extensions: 33"

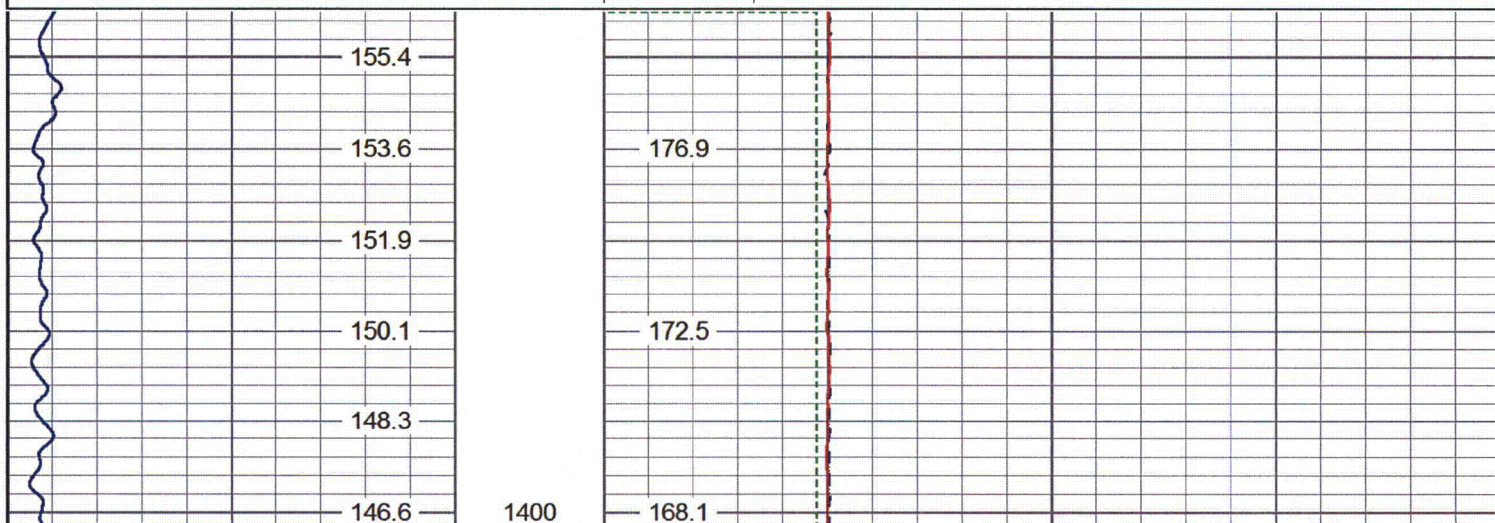
TBHV in BARRELS.

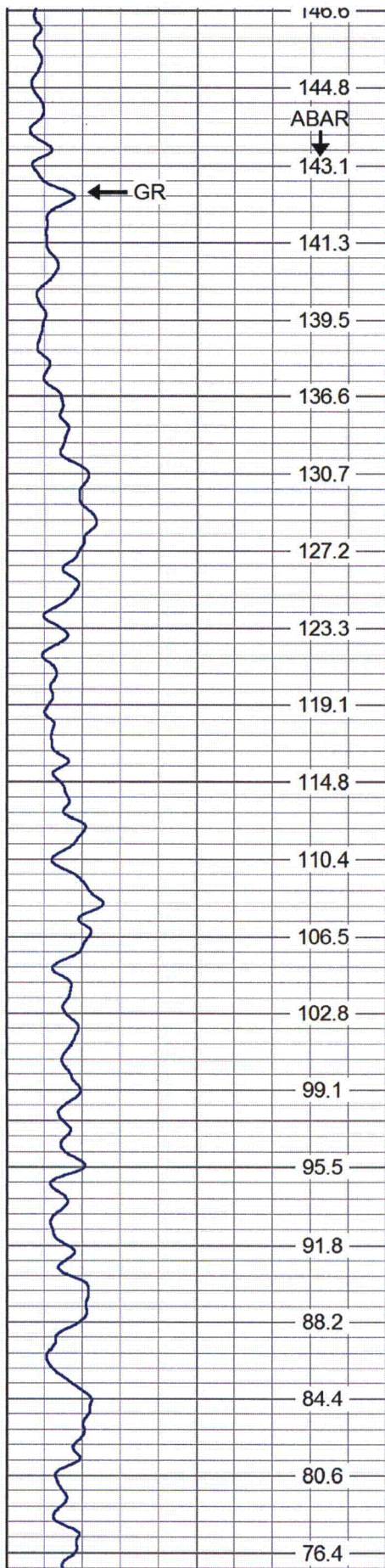
MV
Geophysical

MAIN PASS

Database File: ltpdzm1a.db
Dataset Pathname: run2/MAIN
Presentation Format: xy1030-5
Dataset Creation: Wed Jun 20 21:32:14 2012
Charted by: Depth in Feet scaled 1:240

0	GAMMA RAY (GAPI)	100	10	Y-CALIPER (in)	30
	ABAR (bbl)		10	X-CALIPER (in)	30
			10	BIT SIZE (in)	30
			TBAR (bbl)		



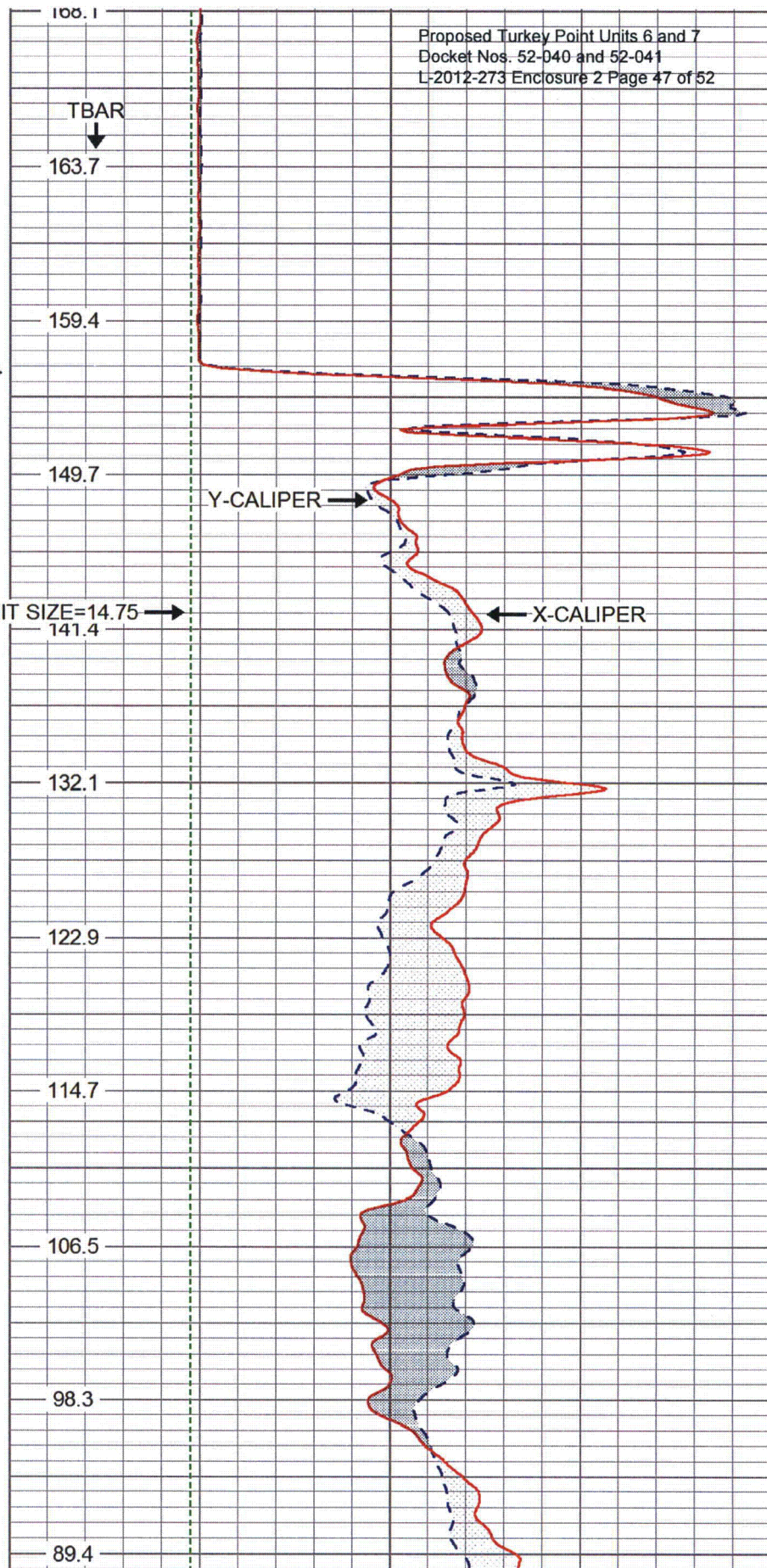


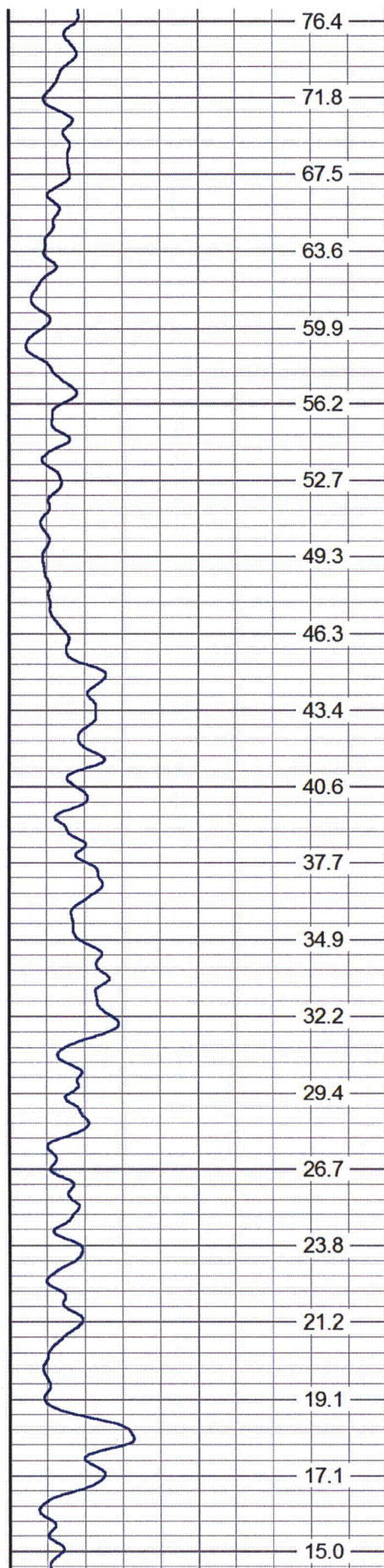
1400

<- CSG ->

1500

1600

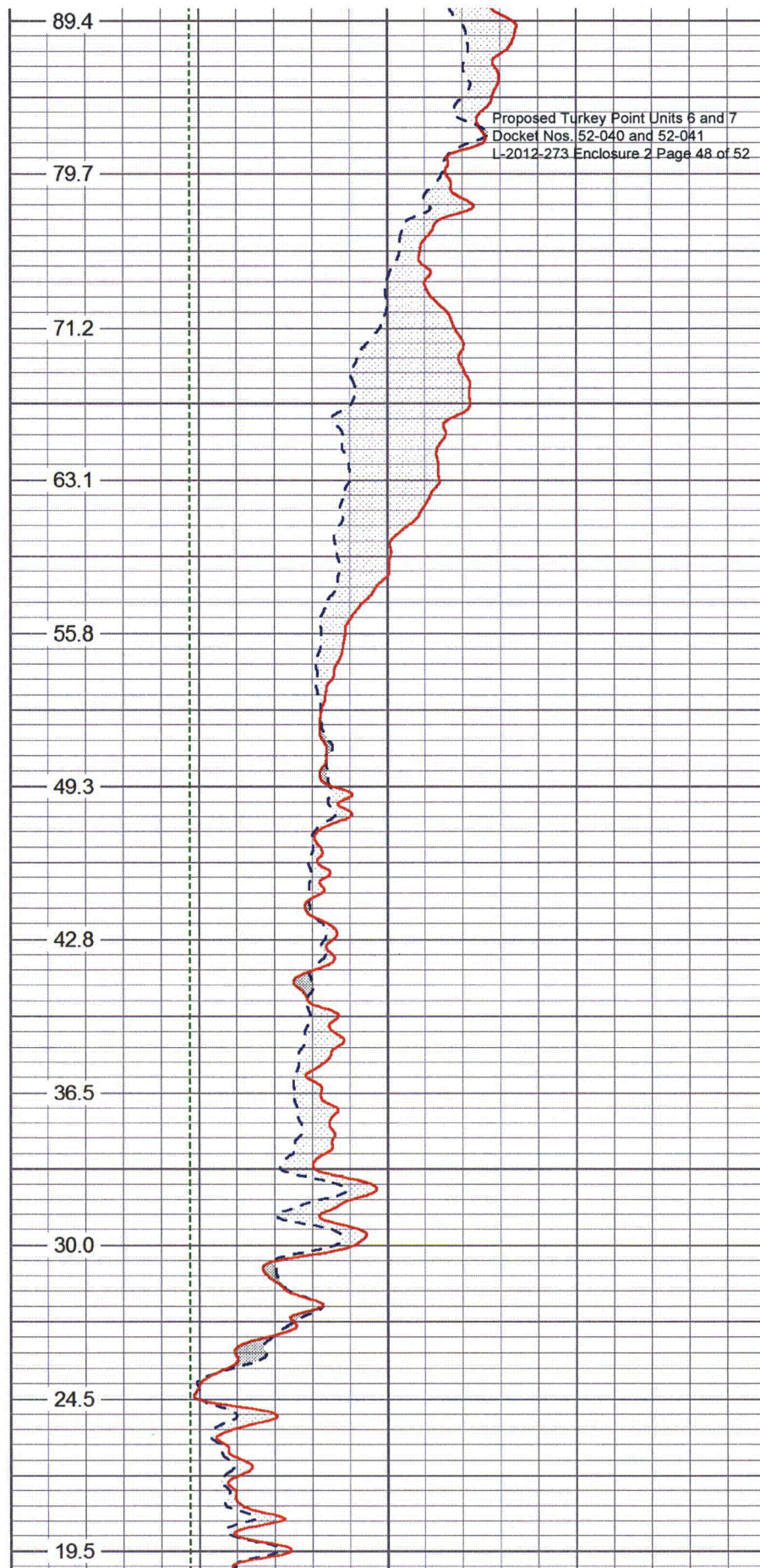


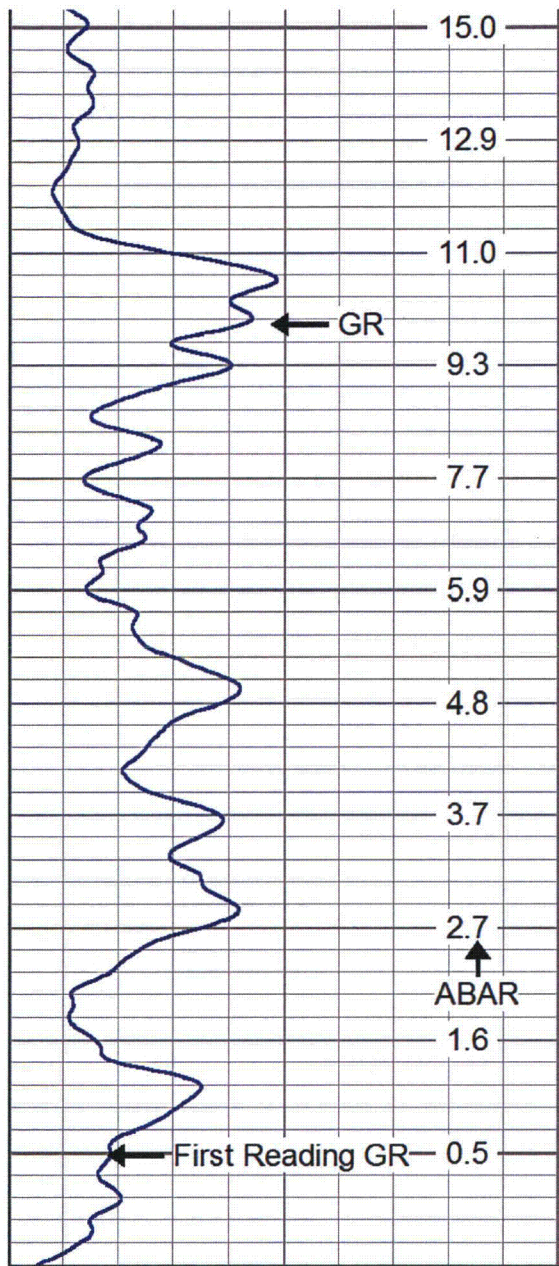


1600

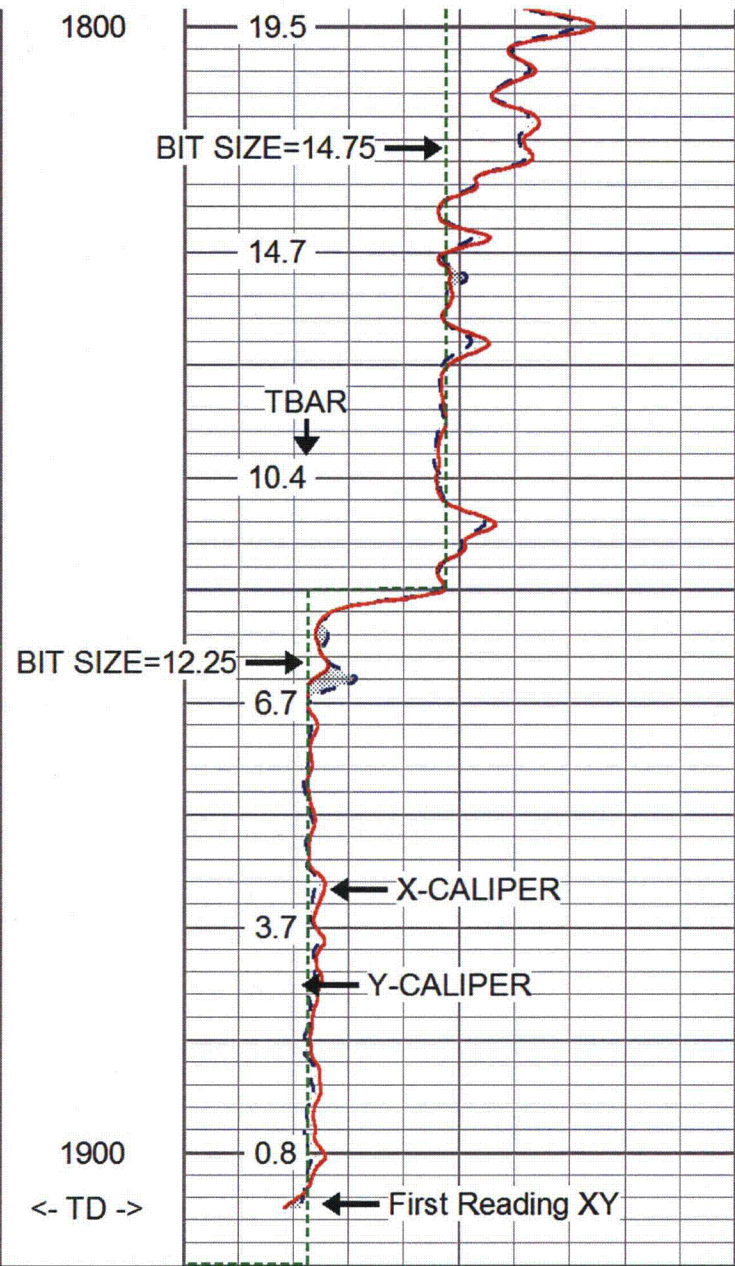
1700

1800





0	GAMMA RAY (GAPI)	100
	ABAR (bbl)	

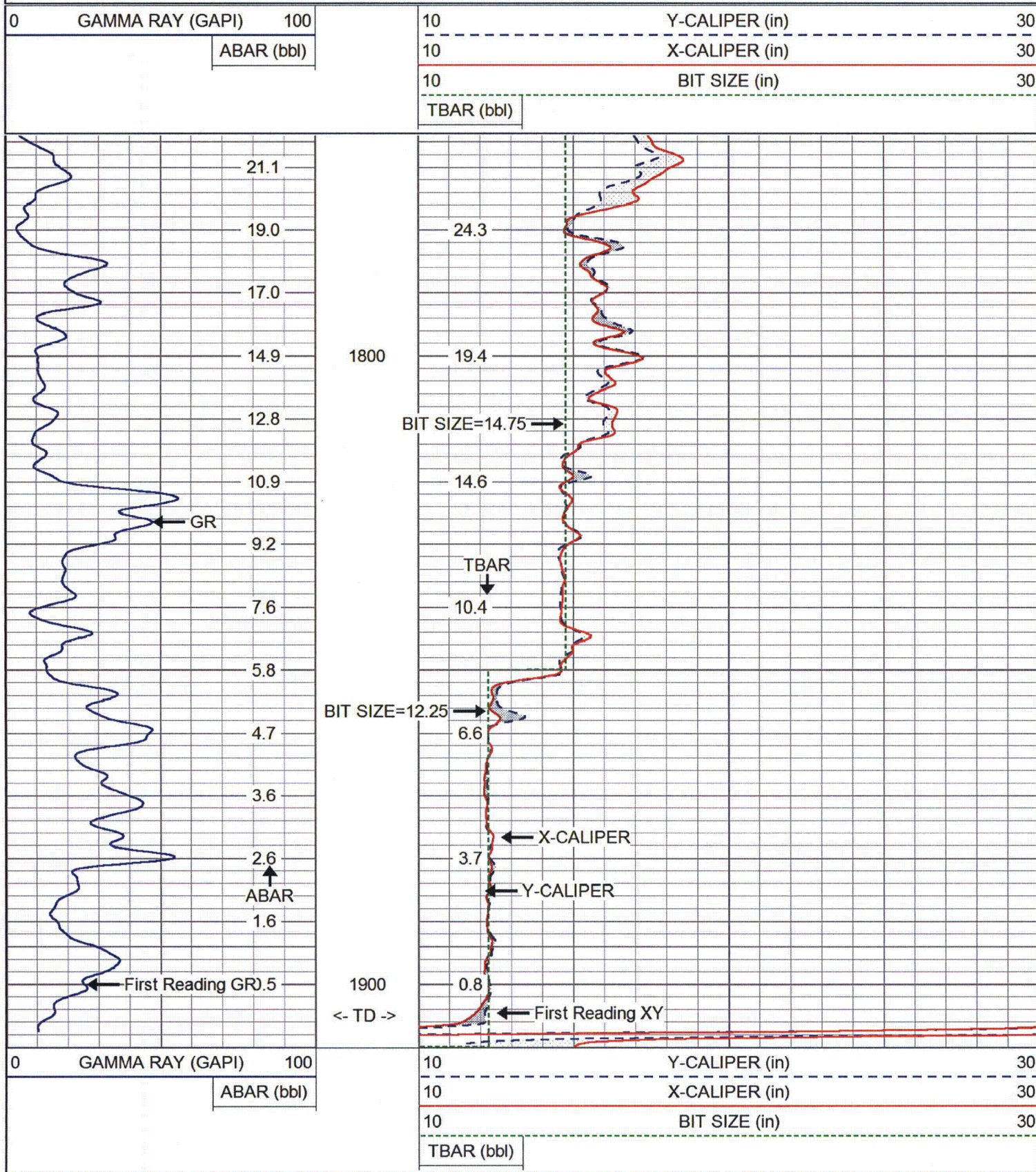


10	Y-CALIPER (in)	30
10	X-CALIPER (in)	30
10	BIT SIZE (in)	30
	TBAR (bbl)	

REPEAT SECTION

Database File: ltpdzm1a.db
 Dataset Pathname: run2/REPEAT
 Presentation Format: xy1030-5
 Dataset Creation: Wed Jun 20 21:40:05 2012
 Charted by: Depth in Feet scaled 1:240

Proposed Turkey Point Units 6 and 7
 Docket Nos. 52-040 and 52-041
 L-2012-273 Enclosure 2 Page 50 of 52



Calibration Report

Proposed Turkey Point Units 6 and 7
Docket Nos. 52-040 and 52-041
L-2012-273 Enclosure 2 Page 51 of 52

Database File: ltpdzm1a.db
Dataset Pathname: run2/pass1
Dataset Creation: Wed Jun 20 20:25:27 2012 by Log VER_5.3

XY Caliper Calibration Report

Serial Number:	01S		
Tool Model:	XYCS		
Performed:	Mon Jun 18 09:55:56 2012		
Small Ring:	12	in	
Large Ring:	16	in	
	X Caliper	Y Caliper	
Reading with Small Ring:	763.5	693	cps
Reading with Large Ring:	841	743.8	cps
Gain:	0.0516129	0.0787402	
Offset:	-27.4065	-42.5669	

Gamma Ray Calibration Report

Serial Number:	01		
Tool Model:	GROH		
Performed:	Wed Jun 20 20:03:06 2012		
Calibrator Value:	120	GAPI	
Background Reading:	12.987	cps	
Calibrator Reading:	134.357	cps	
Sensitivity:	0.988712	GAPI/cps	

Sensor	Offset (ft)	Schematic	Description	Len (ft)	OD (in)	Wt (lb)
GR	5.00		GR-GROH (01)	2.75	3.50	40.00
			XYC-XYCS (01S)	6.60	3.50	110.00
XCAL YCAL	0.50 0.50					

Proposed Turkey Point Units 6 and 7
Docket Nos. 52-040 and 52-041
L-2012-273 Enclosure 2 Page 52 of 52

Dataset: ltpdzm1a.db: field/well/run2/pass1
Total Length: 9.35 ft
Total Weight: 150.00 lb
O.D. 3.50 in