

Note:
Aerial Photography from PAMAP Program, PA DCNR,
Bureau of Topographic and Geologic Survey, 2005
USFWS NWI Berwick, PA Quad, 1976

2,000 1,000 0 2,000 Feet

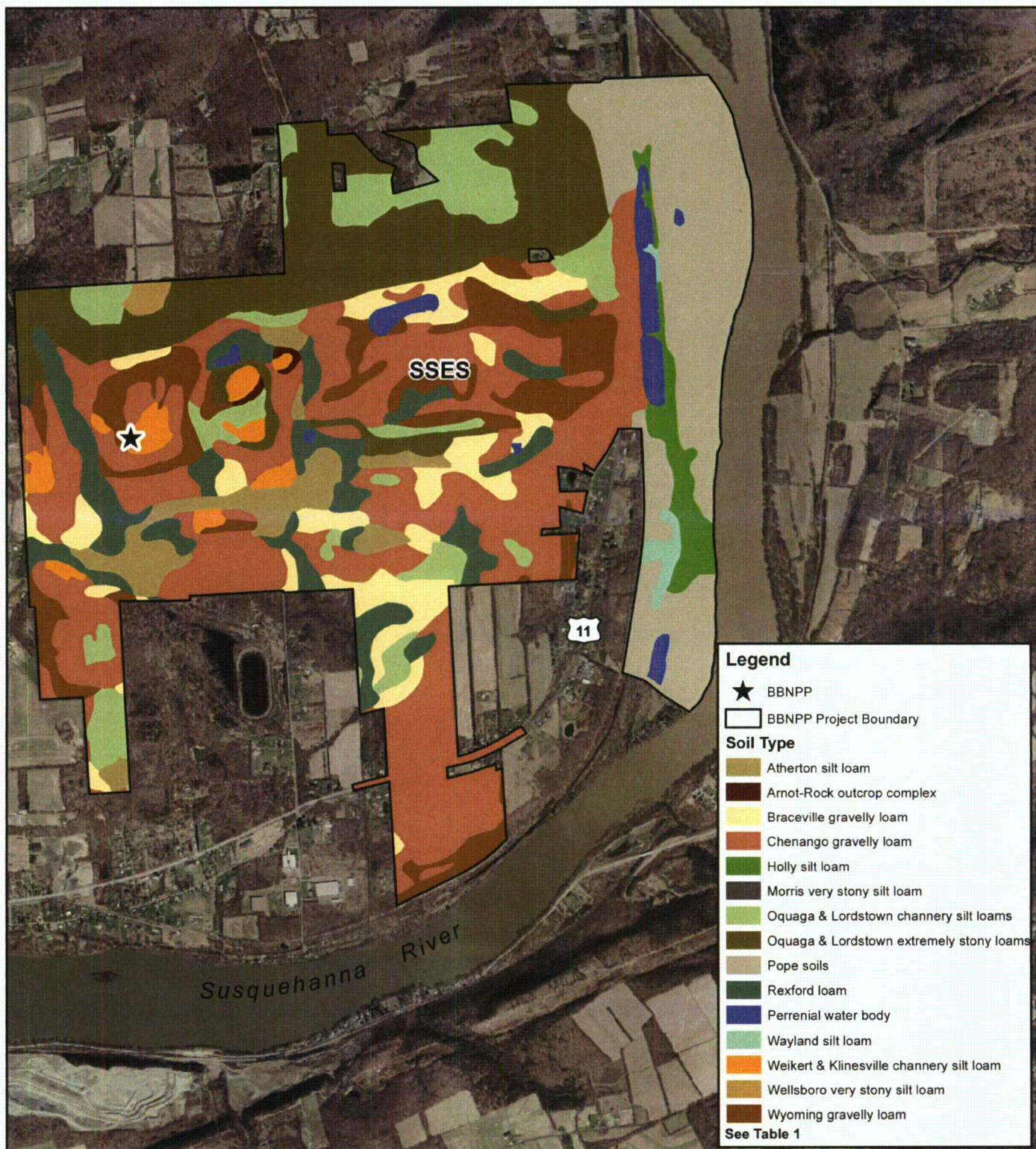
Figure 3.
Bell Bend NPP
National Wetlands Inventory Map



NORMANDEAU ASSOCIATES
ENVIRONMENTAL CONSULTANTS
400 Old Reading Pike, Bldg A, Suite 101 Stowe, PA 19464

date: 07/27/10
prepared by: s.sherman
project: 22474.000

rev. date: 10/01/10, 09/06/11
prepared for: b.les
file name: Figure3.BBNPP_Site_NWI



Note:
Aerial Photography from PAMAP Program, PA DCNR,
Bureau of Topographic and Geologic Survey, 2005
SoilDataMart.nrcs.usda.gov

2,600 1,300 0 2,600 Feet

Figure 4.
**Bell Bend NPP
Soil Survey Map**



**NORMANDEAU ASSOCIATES
ENVIRONMENTAL CONSULTANTS**
400 Old Reading Pike, Bldg A, Suite 101 Stowe, PA 19464

date: 07/27/10
prepared by: s.sherman
project: 22474.000

rev. date: 09/30/10, 09/06/11
checked by: b. lees
file name: Figure4.BBNPP Site Soils



Legend

- ★ BBNPP
- BBNPP Project Boundary
- Wetland Type**
 - Wetlands
 - Stream Channel
 - Waterbodies

Note:
Aerial Photography from PAMAP Program, PA DCNR,
Bureau of Topographic and Geologic Survey, 2005

Wetlands delineated by Normandeau Associates, Inc.
and surveyed by Peters Consultants, Inc.

Beginning January 2010, all wetland coordinates were located
by Normandeau Associates, Inc. with a sub-meter GPS unit.

This figure illustrates wetlands delineated within the wetlands
survey area as shown in Figure 2. The survey area captures
potential areas of disturbance within the BBNPP Project
Boundary displayed in Figure 1. Presence of wetlands
outside of the survey area have not been determined.

0.3 0.15 0 0.3 Miles

**Figure 5.
Bell Bend NPP
Wetlands Map**



**NORMANDEAU ASSOCIATES
ENVIRONMENTAL CONSULTANTS**
400 Old Reading Pike, Bldg A, Suite 101, Stowe, PA 19464

date: 07/28/10
prepared by: s.sherman
project: 21766.004

rev. date: 10/01/10, 11/12/10
checked by: k.maurice
file name: Figure5.BBNPP_Wetlands