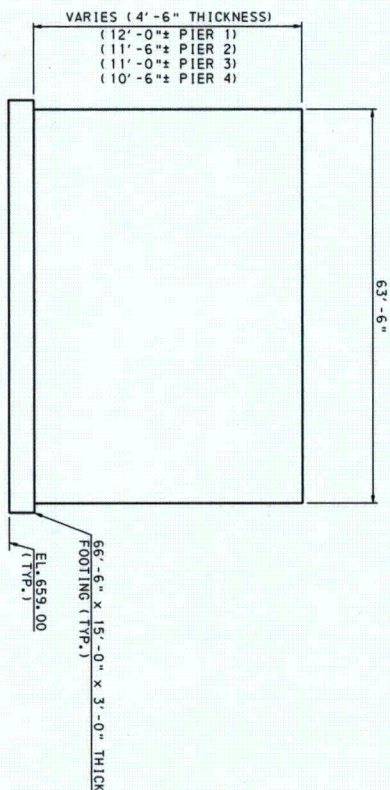


**Pennoni**



**TYPICAL PIER AND FOOTING DIMENSIONS**  
NOT TO SCALE



**TYPICAL SECTION BRIDGE NO.**

5 SPACES @ 10'-9" = 53'-9"  
 (6 - 33/63.25 PA BULB-TEE BEAMS)

1 0 1 2 3 FE  
SCALE: 3/8" = 1'-0"


ANTICIPATED BRIDGE CONSTRUCTION ITEMS
CLASS AAA CEMENT CONCRETE
CLASS AA CEMENT CONCRETE
CLASS A CEMENT CONCRETE
PRESTRESSED CONCRETE I-BEAMS
NEOPRENE STRIP SEAL DAMS
METAL RAILING
REINFORCEMENT BARS
CLASS 3 EXCAVATION
SELECTED BORROW EXCAVATION, STRUCTURE BACKFILL
NO. 2 COARSE AGGREGATE

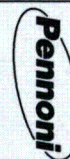
*Engineers Surveyors Planners Landscape Architects*

CONCEPTUAL BRIDGE TYPE STUDIES  
BELL BEND NUCLEAR PLANT, SALEM TOWNSHIP  
LUZERNE COUNTY, PENNSYLVANIA

BRIDGE NO.1 ACCESS ROAD A OVER WETLAND 19  
STATION 336+34.00  
FIVE-SPAN CONTINUOUS COMPOSITE PRESTRESSED  
CONCRETE I-BEAM BRIDGE  
TYPICAL SECTION



4-19-11		ISSUED FOR USE	DFG
DATE	NO.	REVISIONS	BY

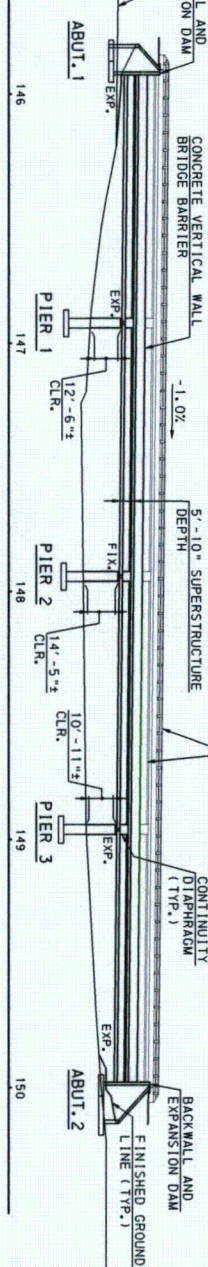


SCALE AS NOTED	DRAWING NO.  B1-S2
DRAWN BY ASA	
DATE 1-28-11	
APPROVED 4-19-11	

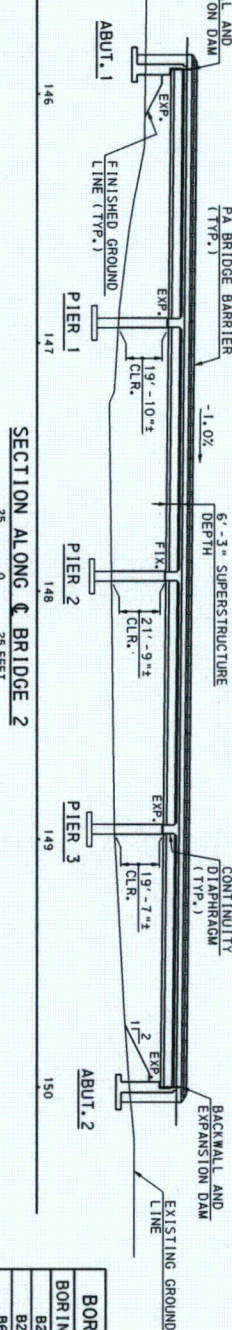


DESIGN RPD CADD JUS DWG ASA CADD RPD

DATUM 635.00



DATUM 635.00



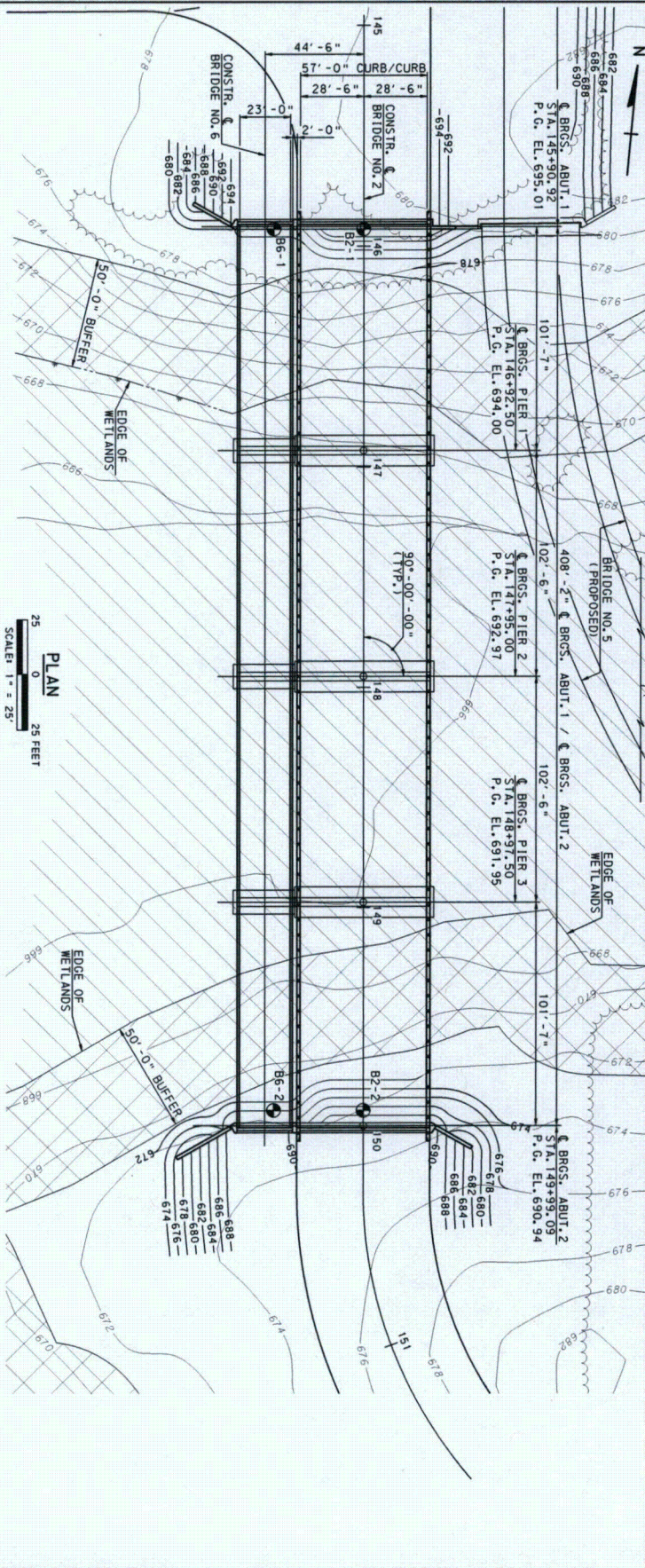
BORING LOCATION TABLE

BORING NO.	NORTHING	EASTING
B2-1	339341.84	2407639.48
B2-2	338943.57	2407676.65
B6-1	339338.07	2407599.16
B6-2	338939.80	2407636.32

⬤ DENOTES BORING LOCATION.

PLAN

SCALE: 1" = 25'



Pennoni Associates Inc. 100 N. WILKES-BARRE BLVD. WILKES-BARRE, PA. 18702 Engineers Surveyors Planners Landscape Architects

SCALE: 1" = 25'

TITLE: B2-S1

DATE: 10-31-11

SHEET: 1 OF 2

DESIGNER: JUS

CHECKER: ASA

APPROVER: RPD

CONCEPTUAL BRIDGE TYPE STUDIES

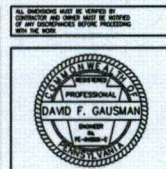
BELL BEND NUCLEAR PLANT, SALEM TOWNSHIP

LUZERNE COUNTY, PENNSYLVANIA

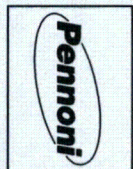
BRIDGE NO. 2 (MAIN ACCESS ROAD) & BRIDGE NO. 6 (UTILITY CROSSING) OVER WETLAND 12 & UNNAMED TRIB. TO WALKER RUN, STATION 147+95.00

FOUR-SPAN CONTINUOUS COMPOSITE PRESTRESSED CONCRETE PA BULB-TEE BEAM BRIDGE

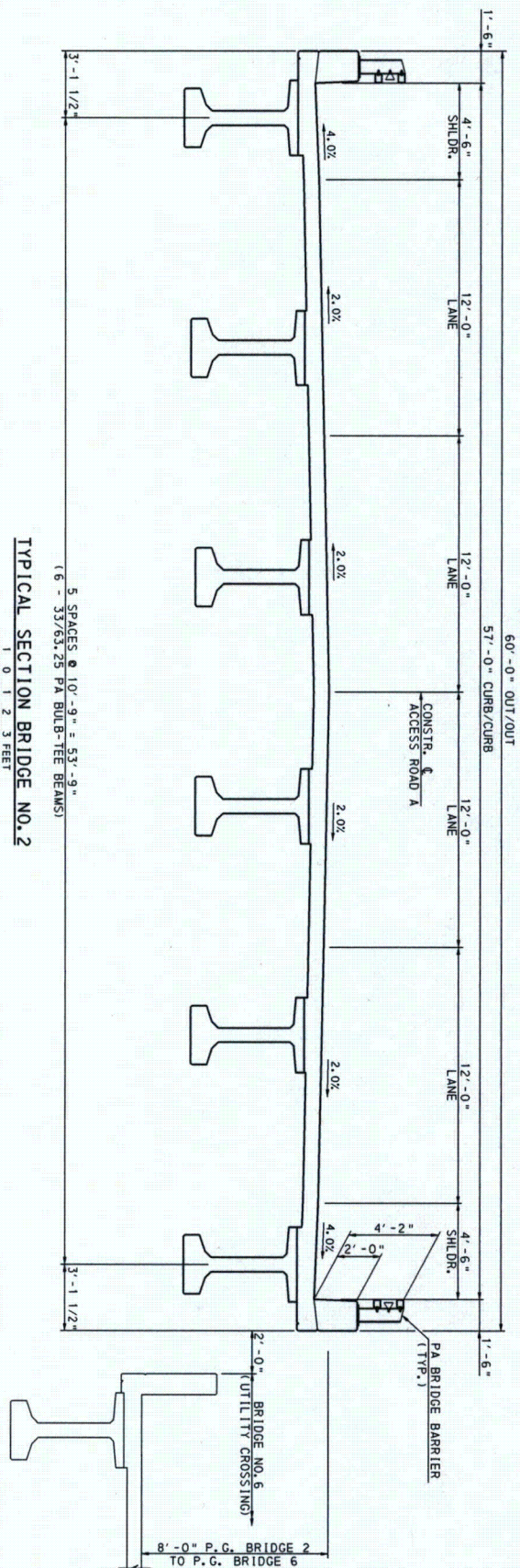
GENERAL PLAN AND ELEVATION



DATE	NO.	REVISIONS	BY
4-19-11	1	ISSUED FOR USE	DFG







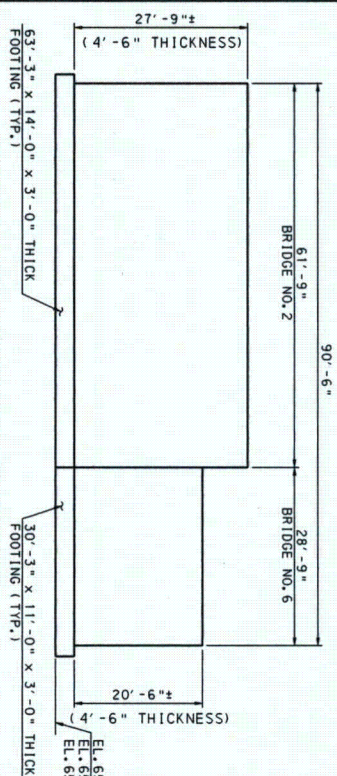
TYPICAL SECTION BRIDGE NO. 2

5 SPACES @ 10'-9" = 53'-9"  
(6 - 33/63.25 PA BULB-TEE BEAMS)

SCALE: 3/8" = 1'-0"

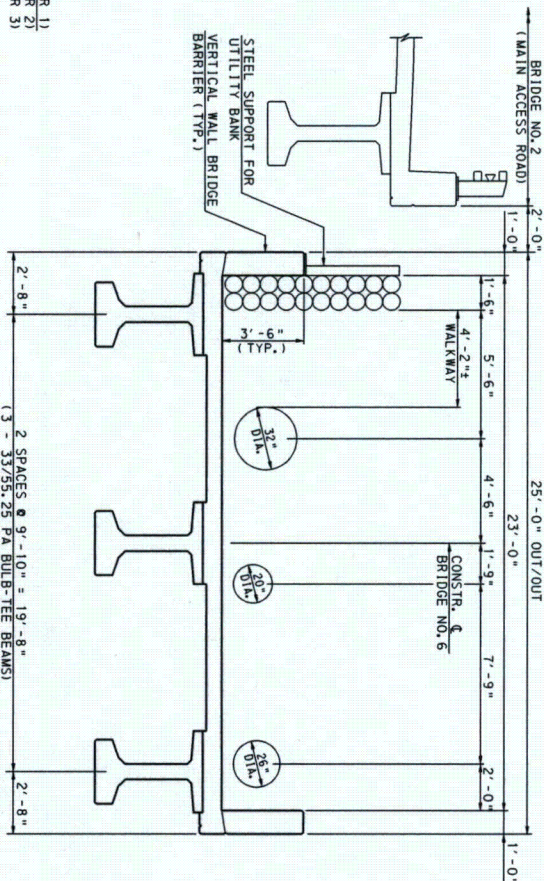
ANTICIPATED BRIDGE CONSTRUCTION ITEMS
CLASS 1A CEMENT CONCRETE
CLASS 2A CEMENT CONCRETE
CLASS 3 CEMENT CONCRETE
PRESTRESSED CONCRETE I-BEAMS
NEOPRENE STRIP SEAL DAMS
METAL RAILING
REINFORCEMENT BARS
HP12 x 74 PILES
CLASS 3 EXCAVATION
SELECTED BORROW EXCAVATION, STRUCTURE BACKFILL

TABLE OF PROPOSED UTILITIES			
TYPE	MATERIAL	DIAMETER	QUANTITY
ELECTRICAL	GALV. RIGID STEEL	6"	20
CIRC. WATER	CARBON STEEL	32"	1
BLOW DOWN WATER	HDBE	26"	1
WATER	CARBON STEEL	20"	1



### TYPICAL PIER AND FOOTING DIMENSIONS

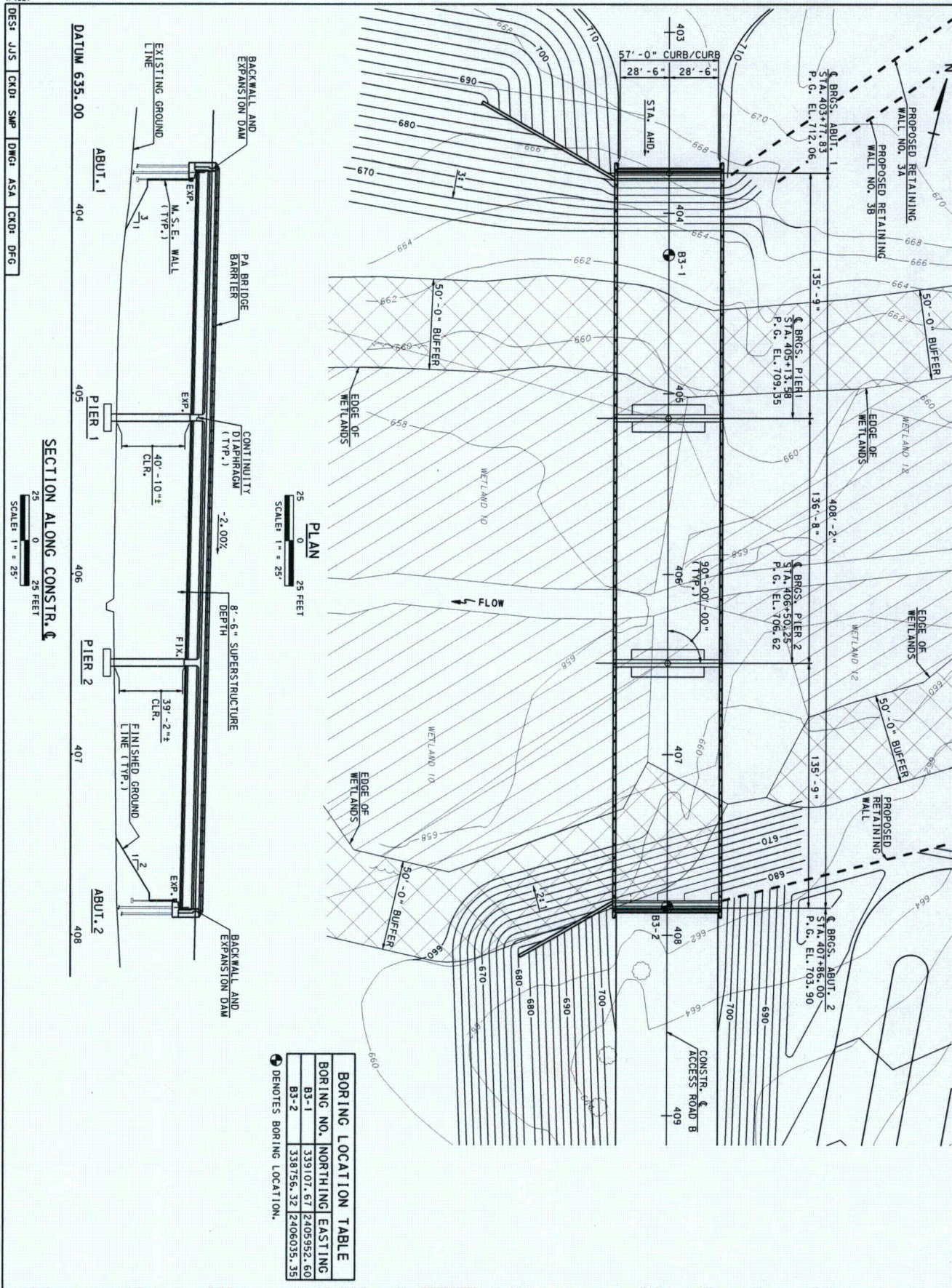
NOT TO SCALE



TYPICAL SECTION BRIDGE NO. 6

1 0 1 2 3 FEET  
SCALE: 3/8" = 1'-0"





**Pennoni Associates Inc.** 100 N. WILKES-BARRE BLVD.  
WILKES-BARRE, PA 18702 **Engineers Surveyors Planners Landscape Architects**

		JAN 06 PPLS 0902	
SHEET 1 OF 2			
DRAWING NO.			
SCALE			
1" = 25'			
DESIGNED BY			
ASA			
DATE			
1-28-11			
APPROVED BY			
A-18-11			

B3-S11


**CONCEPTUAL BRIDGE TYPE STUDIES**  
BELL BEND NUCLEAR PLANT, SALEM TOWNSHIP  
LUZERNE COUNTY, PENNSYLVANIA

**BRIDGE NO.3** ACCESS ROAD B OVER WETLAND 10 & 12  
STATION 405+81.92



**THREE-SPAN CONTINUOUS COMPOSITE PRESTRESSED  
CONCRETE I-BEAM BRIDGE**

**GENERAL PLAN AND ELEVATION**

ALL ENDORSEMENTS MUST BE VERIFIED BY  
CONTRACTOR AND OWNER MUST BE NOTIFIED  
OF ANY DISCREPANCIES BEFORE PROCEEDING  
WITH THE WORK

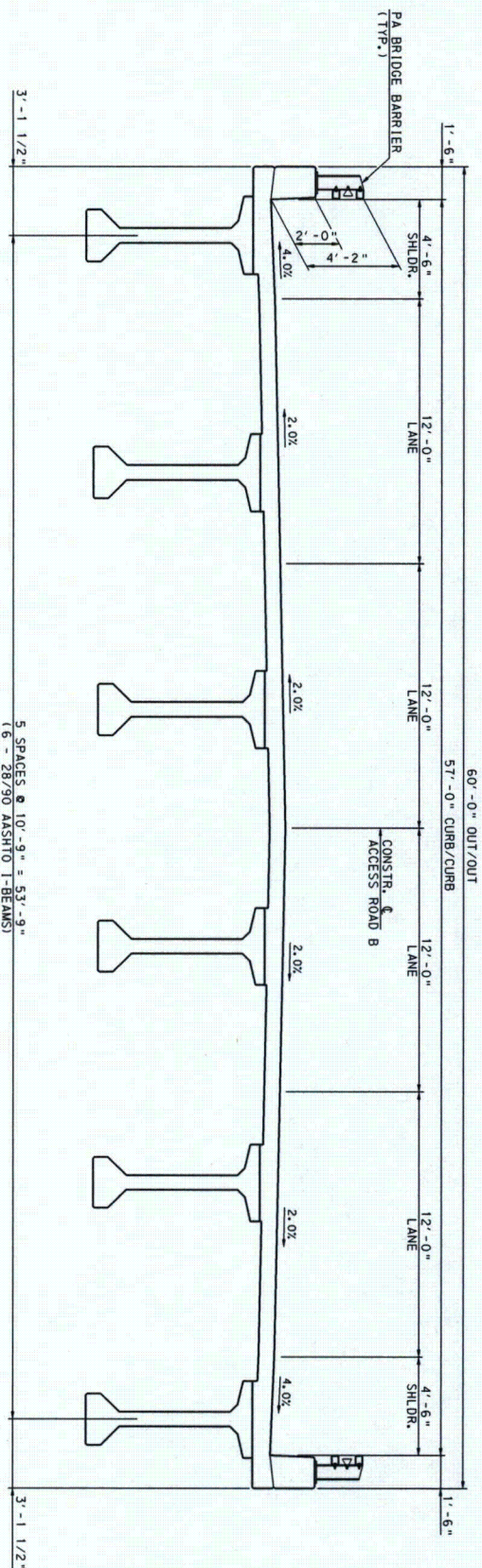


COMMONWEALTH OF PENNSYLVANIA  
REGISTERED  
PROFESSIONAL  
DAVID F. GAUSMAN  
ENGINEER  
No. PE-000825-C  
PENNSYLVANIA

10-28-11		WETLAND REVISION	DFG
4-19-11		ISSUED FOR USE	DFG
DATE	NO.	REVISIONS	BY

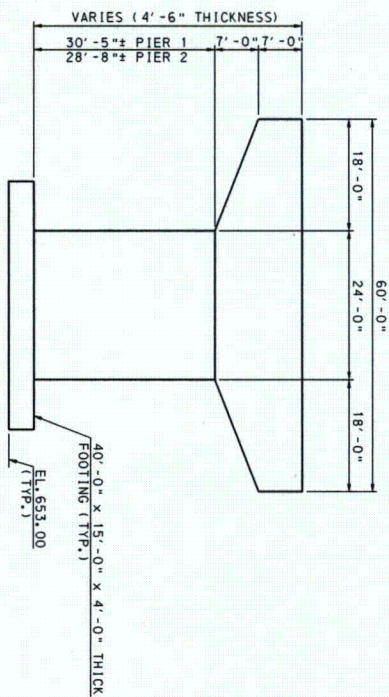
**Pennoni**





**TYPICAL SECTION BRIDGE NO. 3**

SCALE: 3/8" = 1'-0"



### TYPICAL PIER AND FOOTING DIMENSIONS

NOT TO SCALE

ANTICIPATED BRIDGE CONSTRUCTION ITEMS
CLASS AAA CEMENT CONCRETE
CLASS AA CEMENT CONCRETE
CLASS A CEMENT CONCRETE
PRESTRESSED CONCRETE I-BEAMS
NEOPRENE STRIP SEAL DAMS
METAL RAILING
REINFORCEMENT BARS
HP12 x 74 PILES
MECHANICALLY STABILIZED EARTH ABUTMENTS
CLASS 3 EXCAVATION
SELECTED BORROW EXCAVATION, STRUCTURE BACKFILL
NO. 2 COARSE AGGREGATE

*Pennoni Associates Inc.* 100 N. WILKES-BARRE BLVD.  
WILKES-BARRE, PA 18702

*Engineers Surveyors Planners Landscape Architects*

SCALE	DRAWING NO.
AS NOTED	
DRAWN BY ASA	
DATE 01-26-11	
APPROVED	B3-S2
4-19-11	

	JOB NO.
	PPUS 0902
SHEET 2 OF 2	

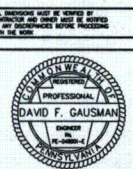
ALL DOCUMENTS FURNISHED BY PERSONS ASSOCIATED WITH THE INVESTIGATION OF THE PROJECTS AND THE INVESTMENTS OF SERVICE IN RESPECT OF THE PROJECTS THEY ARE NOT ENDORSED OR REPRESENTED BY THE BUREAU OF THE BOARD OF DIRECTORS OF THE PROJECTS. THE BUREAU OF THE BOARD OF DIRECTORS OF THE PROJECTS IS NOT RESPONSIBLE FOR THE CONTENTS OF THE PROJECTS. ANY REUSE, REPRODUCTION, OR OTHER USE OF THE PROJECTS WITHOUT THE WRITTEN PERMISSION OF THE BUREAU OF THE BOARD OF DIRECTORS OF THE PROJECTS IS PROHIBITED. THE BUREAU OF THE BOARD OF DIRECTORS OF THE PROJECTS IS NOT RESPONSIBLE FOR THE CONTENTS OF THE PROJECTS. ANY REUSE, REPRODUCTION, OR OTHER USE OF THE PROJECTS WITHOUT THE WRITTEN PERMISSION OF THE BUREAU OF THE BOARD OF DIRECTORS OF THE PROJECTS IS PROHIBITED.


CONCEPTUAL BRIDGE TYPE STUDIES  
BELL BUREL NUCLEAR PLANT, SALEM TOWNSHIP  
LUZERNE COUNTY, PENNSYLVANIA

BRIDGE NO. 3 ACCESS ROAD B OVER WETLAND 10  
STATION 405+81.92

THREE-SPAN CONTINUOUS COMPOSITE PRESTRESSED  
CONCRETE I-BEAM BRIDGE

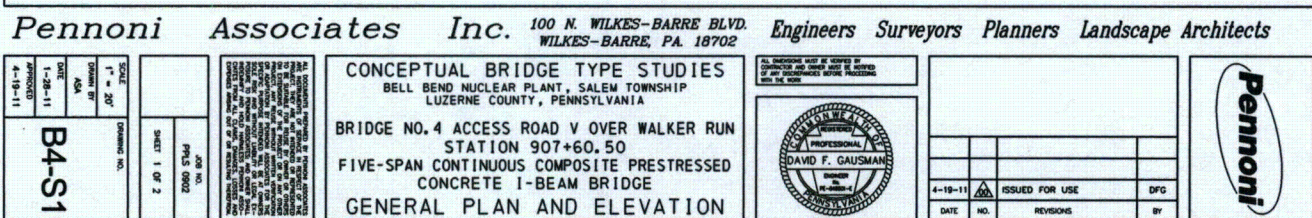
TYPICAL SECTION



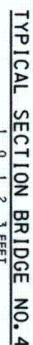
4-18-11		ISSUED FOR USE	DFG
DATE	NO.	REVISIONS	BY











5 SPACES @ 10'-9" = 53'-9"

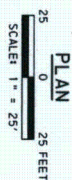
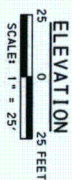
1 0 1 2 3 FEE  
SCALE: 3/8" = 1'-0"



**Pennoni**



 DENOTES BORING LOCATION.



### HORIZONTAL CURVE DATA

P.I. STA. 588+67.76  
DELTA = 84°-40'-07" RT.  
D = 11°-28'-42"  
T = 455.51'  
L = 738.87'  
R = 500.00'  
E = 130.39'

BORING LOCATION TABLE		
BORING NO.	NORTHING	EASTING
B5-1	339334.45	2407715.99
B5-2	338944.70	2408011.33


⊕ DENOTES BORING LOCATION.

 DENOTES BORING LOCATION.

**Pennoni Associates Inc.** 100 N. WILKES-BARRE BLVD.  
WILKES-BARRE, PA 18702 **Engineers Surveyors Planners Landscape Architects**

ALL DIMENSIONS MUST BE VERIFIED BY  
CONTRACTOR AND OWNER MUST BE NOTIFIED  
OF ANY DISCREPANCIES BEFORE PROCEEDING

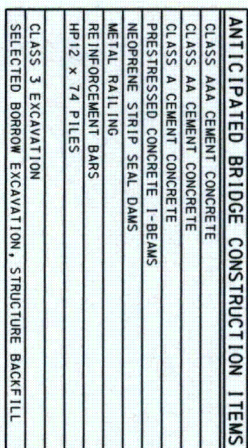


4-19-11		ISSUED FOR USE	DFG
DATE	NO.	REVISIONS	BY

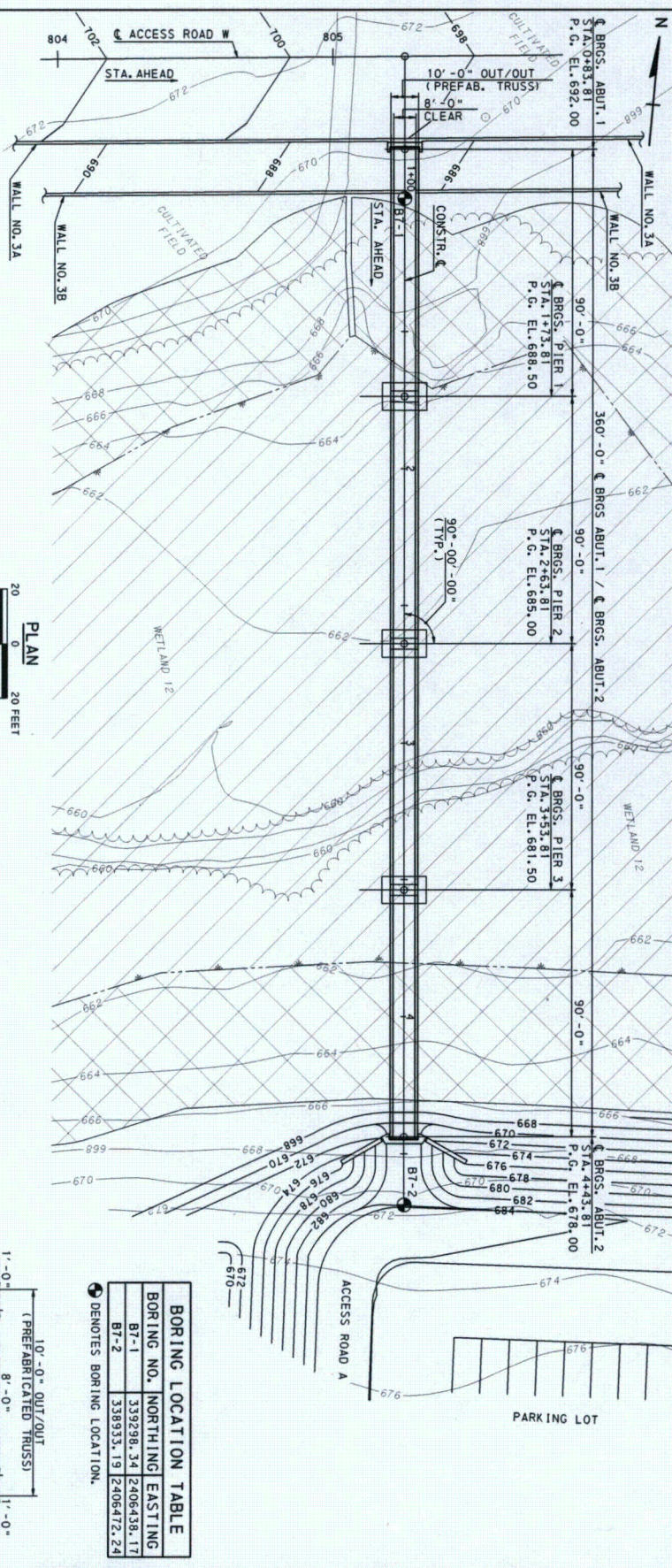


CONCEPTUAL BRIDGE TYPE STUDIES  
BELL BEND NUCLEAR PLANT, SALEM TOWNSHIP  
LUZERNE COUNTY, PENNSYLVANIA  
BRIDGE NO. 5 (RAILROAD) OVER WETLAND 12  
STATION 558+77.67  
SIX-SPAN COMPOSITE PRESTRESSED CONCRETE  
AASHTO I-BEAM BRIDGE  
GENERAL PLAN AND ELEVATION









BORING LOCATION TABLE		
BORING NO.	NORTHING	EASTING
B7-1	339298.34	2406438.17
B7-2	338933.19	2406472.24

● DENOTES BORING LOCATION.

PIER LOCATION	"H"
PIER 1	30'-6" $\pm$
PIER 2	29'-0" $\pm$
PIER 3	26'-6" $\pm$

**ANTICIPATED BRIDGE CONSTRUCTION ITEMS**

PREFABRICATED TRUSS BRIDGE
CLASS A CEMENT CONCRETE
REINFORCEMENT BARS
CLASS 3 EXCAVATION
SELECTED BORROW EXCAVATION, STRUCTURE BACKFILL

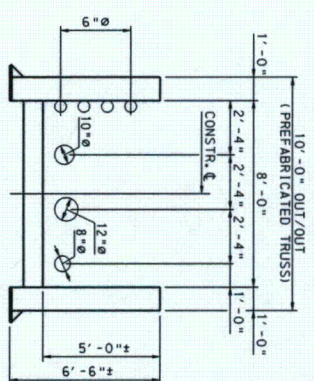


TABLE OF PROPOSED UTILITIES		
TYPE	MATERIAL	DIAMETER QUANTITY
WATER	D. 1. P.	8" 1
SEWER	D. 1. P.	10" 1
FIRE	CEMENT LINED D. 1. P.	12" 1
ELECTRICAL	GALV. RIGID STEEL	6" 4

