



**WASHINGTON
RADIOLOGY
ASSOCIATES, P.C.**

www.washingtonradiology.com

**BOARD CERTIFIED PHYSICIANS
SUBSPECIALIZING IN:**

Magnetic Resonance Imaging
Computed Tomography
Digital Mammography
Breast Tomosynthesis
Needle Biopsies
CT/MR Angiography
Ultrasound
Neuroradiology
Fluoroscopy
Nuclear Medicine
DXA - VFA
Diagnostic X-Ray

LOCATIONS:

2141 K Street, NW
Suites 100, 111, 200 & 900
Washington, DC 20037
202-223-9722
202-659-2819 Fax

4445 Willard Avenue
Suite 200
Chevy Chase, Maryland 20815
301-654-4242
301-907-7414 Fax

10215 Fernwood Road
Suite 103
Bethesda, Maryland 20817
301-564-1053
301-493-8522 Fax

12505 Park Potomac Avenue
Suite 120
Potomac, Maryland 20854
240-223-4700
240-223-4701 Fax

3022 Williams Drive
Suites 104, 200 & 204
Fairfax, Virginia 22031
703-698-8800
703-573-2318 Fax

21351 Ridgeway Circle
Suites 100 & 150
Sterling, Virginia 20166
571-434-0140
571-434-0144 Fax

Business Office
3015 Williams Drive
Suite 200
Fairfax, Virginia 22031
703-641-9133
703-280-5098 Fax

May 16, 2012

**U.S. Nuclear Regulatory Commission
Region I
Nuclear Material Section B
475 Allendale Road
King of Prussia, PA 19406**

**RE: License Amendment Request - Closeout Survey
License #08-28752-01
Docket #030-32755
Washington Radiology Associates**

License Reviewers:

We are requesting the release of the facility located at 2021 K Street, NW., Suites T-120 and 315, Washington, DC 20006 for unrestricted use. No radioactive material is present at the site. In accordance with the guidelines established by the NRC, dated December, 1975, "Guidelines for Decontamination of Facilities and Equipment Prior to Release for Unrestricted Use," we hereby submit the final survey of the above mentioned rooms.

Please forward all mail regarding this to: 2141 K Street NW, Suite 900, Washington, DC 20037.

Any questions regarding this request may be directed to the undersigned or Ms. Kelly McGrady, Health Physicist at (410) 692-9806.

Sincerely,

**Gary L. Rose, M.D.
Radiation Safety Officer**

Washington Radiology Associates
Old Facility Closeout Survey

On April 26, 2012, radiation exposure levels were monitored with a Victoreen 451, SN: 3607, survey meter which was last calibrated on November 11, 2011. Areas surveyed are indicated on the enclosed diagrams.

Wipe tests were conducted on 100 cm squared areas using absorbent paper. Wipe test areas are indicated on the enclosed diagram.

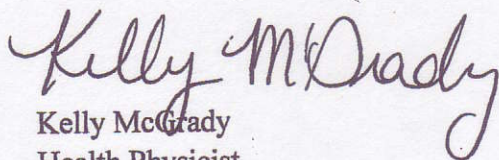
Wipe test instrument used: Ludlum Scaler Ratemeter, Model 2200, SN: 232992
Ludlum Model 243, SN: 069108, single port well
Last calibrated: March 11, 2012
ROI (keV) 25 - 800
Detector efficiency: 32.1%
Background (cpm) 2566
MDA (uCi) 5.70E-05

Results

Location	Exposure Results	Wipe Test Result
PET Room	0.02 mR/hr	Less than Background
Injection Room 1	0.02 mR/hr	Less than Background
Injection Room 2	0.02 mR/hr	Less than Background
Hot Lab	0.02 mR/hr	Less than Background
NM Hallway	0.02 mR/hr	Less than Background
NM Camera Rm	0.02 mR/hr	Less than Background
Treadmill Rm 1	0.02 mR/hr	Less than Background
Treadmill Rm 2	0.02 mR/hr	Less than Background
Treadmill Rm 3	0.02 mR/hr	Less than Background

Any questions regarding this report should be directed to the undersigned.

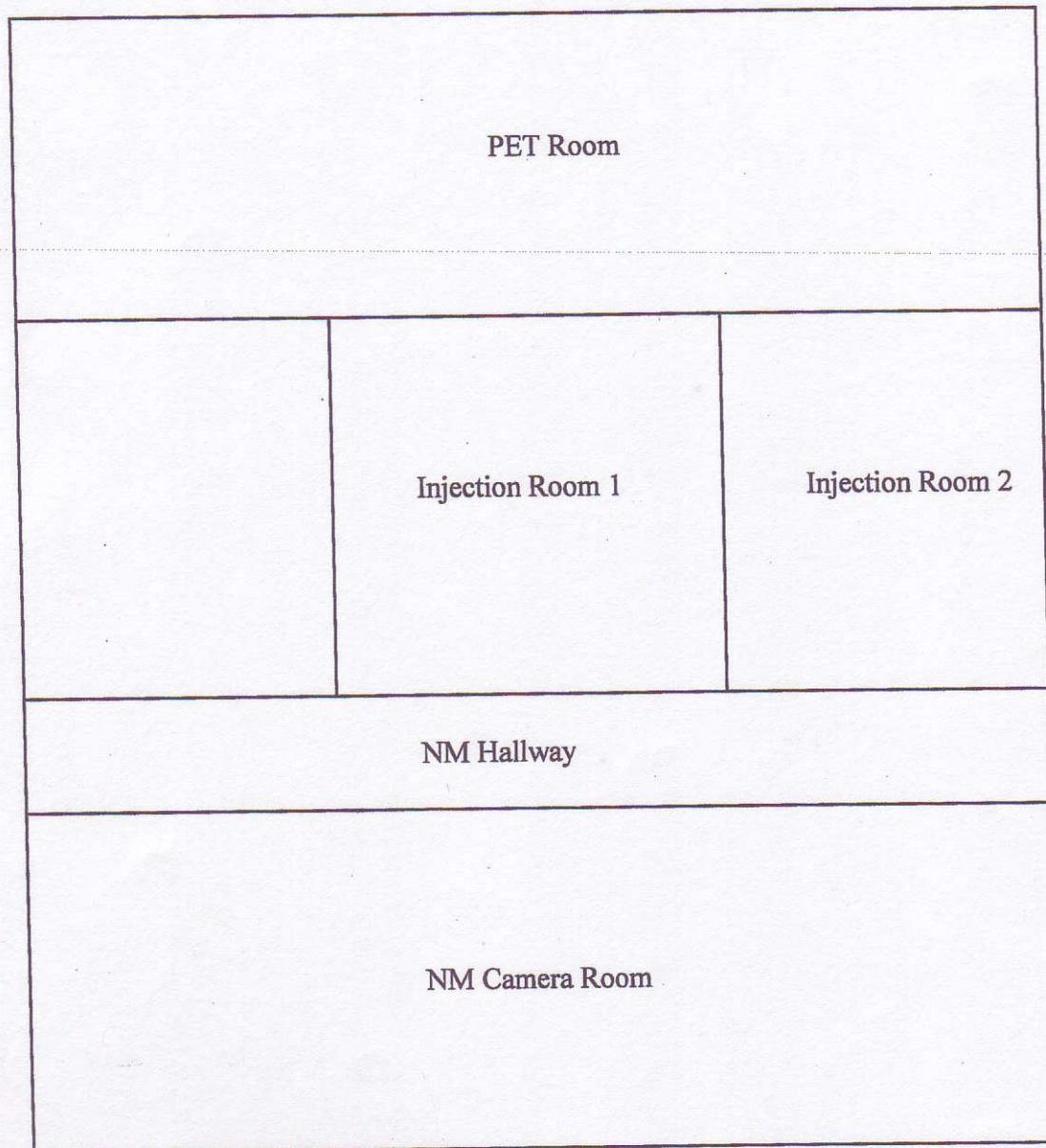
Sincerely,



Kelly McGrady
Health Physicist
Krueger-Gilbert Health Physics, Inc.

Washington Radiology Associates
Old Facility Closeout Survey

NM/Cardiac Diagram, Suite T120



Washington Radiology Associates
Old Facility Closeout Survey

Cardiology Office, Suite 315

