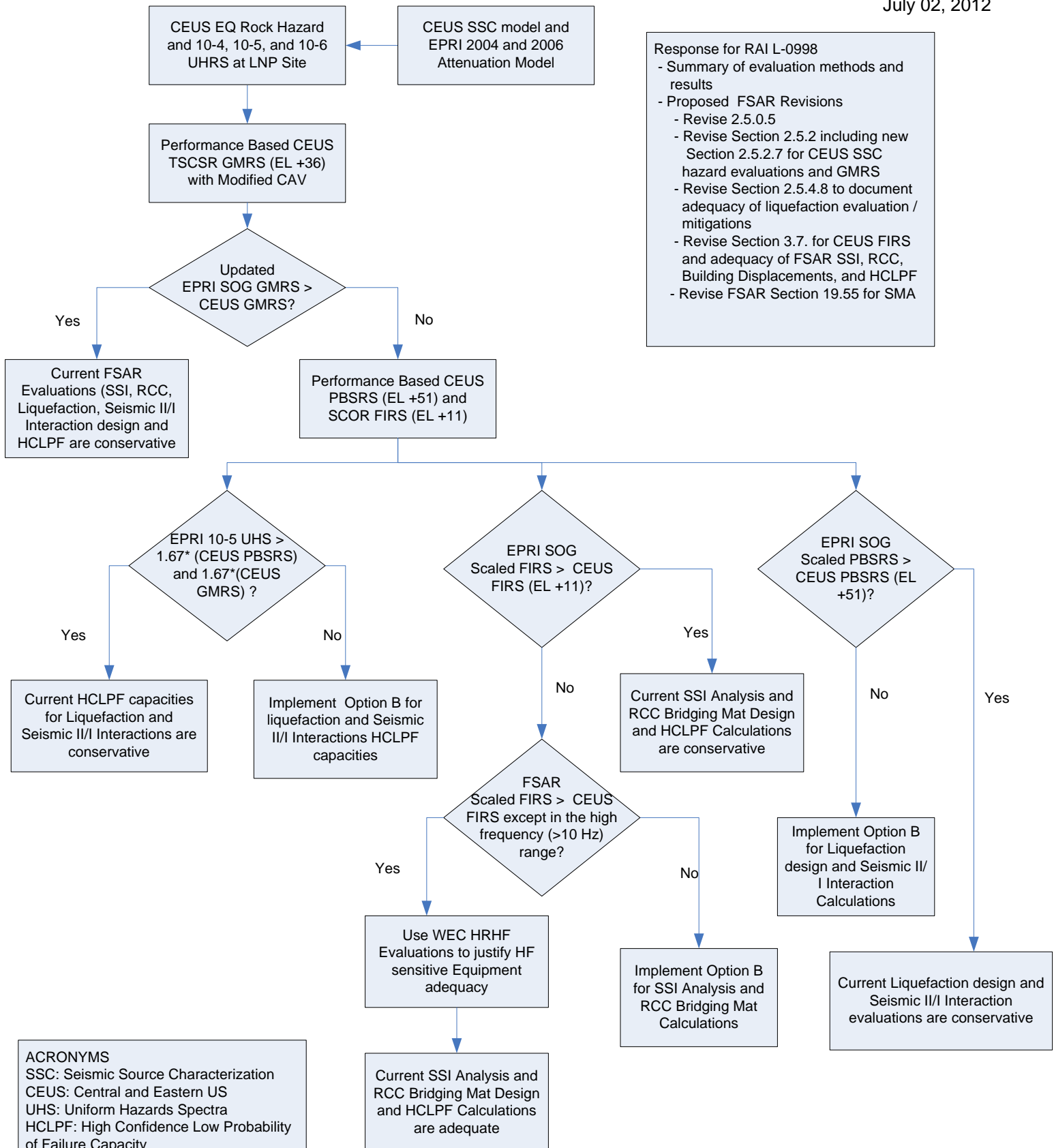


OPTION A: EVALUATION OF CEUS SSC SEISMIC HAZARDS AT LNP SITE

July 02, 2012



Response for RAI L-0998

- Summary of evaluation methods and results
- Proposed FSAR Revisions
 - Revise 2.5.0.5
 - Revise Section 2.5.2 including new Section 2.5.2.7 for CEUS SSC hazard evaluations and GMRS
 - Revise Section 2.5.4.8 to document adequacy of liquefaction evaluation / mitigations
 - Revise Section 3.7. for CEUS FIRS and adequacy of FSAR SSI, RCC, Building Displacements, and HCLPF
 - Revise FSAR Section 19.55 for SMA

ACRONYMS

SSC: Seismic Source Characterization
 CEUS: Central and Eastern US
 UHS: Uniform Hazards Spectra
 HCLPF: High Confidence Low Probability of Failure Capacity
 SCOR: Soil Column Outcrop Response
 GMRS: Ground Motion Response Spectra
 FIRS: Foundation Interface RS
 SSI: Soil Structure Interaction Analysis
 RCC: Roller Compacted Concrete Mat